

Data Path : Z:\pestpcbsrv\HPCHEM1\ECD_L\Data\PL092718\
 Data File : PL040490.D
 Signal(s) : Signal #1: ECD1A.ch Signal #2: ECD2B.ch
 Acq On : 28 Sep 2018 04:30
 Operator : AJ\SJ
 Sample : J5097-01MSD
 Misc :
 ALS Vial : 63 Sample Multiplier: 1

Instrument :
 ECD_L
 ClientSampleId :
 TP-1MSD

Integration File signal 1: autoint1.e
 Integration File signal 2: autoint2.e
 Quant Time: Sep 28 06:03:44 2018
 Quant Method : Z:\pestpcbsrv\HPCHEM1\ECD_L\methods\PL092618.M
 Quant Title : GC Extractables
 QLast Update : Thu Sep 27 01:27:39 2018
 Response via : Initial Calibration
 Integrator: ChemStation

Volume Inj. : 2 µl
 Signal #1 Phase : ZB-MR1 Signal #2 Phase: ZB-MR2
 Signal #1 Info : 30M x 0.32mm x0.5 Signal #2 Info : 30M x 0.32mm x0.25µm

Compound	RT#1	RT#2	Resp#1	Resp#2	ng/ml	ng/ml

System Monitoring Compounds						
1) SA Tetrachlo...	3.211	3.807	150.4E6	61724734	20.547	19.547
28) SA Decachlor...	7.815	8.732	182.7E6	58998108	19.221	18.630
Target Compounds						
2) A alpha-BHC	3.633	4.179	692.6E6	268.8E6	59.195	56.694
3) MA gamma-BHC...	3.903	4.453	633.3E6	244.4E6	58.246	53.863
4) MA Heptachlor	4.177	4.951	668.3E6	239.9E6	56.795	56.467
5) MB Aldrin	4.409	5.247	621.1E6	228.1E6	58.784	54.052
6) B beta-BHC	4.157	4.616	236.7E6	108.9E6	56.074	54.511
7) B delta-BHC	4.343	4.824	657.6E6	252.9E6	58.917	54.787
8) B Heptachlo...	4.840	5.623	588.9E6	194.2E6	56.894	50.596
9) A Endosulfan I	5.164	5.971	553.0E6	182.3E6	54.866	48.997
10) B gamma-Chl...	5.058	5.854	614.0E6	204.0E6	56.540	51.623
11) B alpha-Chl...	5.114	5.926	589.3E6	198.9E6	56.248	50.693
12) B 4,4'-DDE	5.283	6.085	604.0E6	196.1E6	54.649	48.704
13) MA Dieldrin	5.399	6.223	603.9E6	189.9E6	55.133	49.704
14) MA Endrin	5.649	6.434	518.4E6	152.4E6	52.187	46.661
15) B Endosulfa...	5.923	6.638	542.5E6	161.2E6	54.451	46.110
16) A 4,4'-DDD	5.789	6.563	489.4E6	149.8E6	53.010	47.154
17) MA 4,4'-DDT	6.019	6.859	460.1E6	148.8E6	56.893	48.820
18) B Endrin al...	6.090	6.759	431.3E6	142.8E6	51.370	47.692
19) B Endosulfa...	6.300	6.981	502.2E6	155.8E6	52.469	48.434
20) A Methoxychlor	6.565	7.315	247.9E6	77638186	51.327	50.946
21) B Endrin ke...	6.775	7.440	586.4E6	165.7E6	54.051	53.905

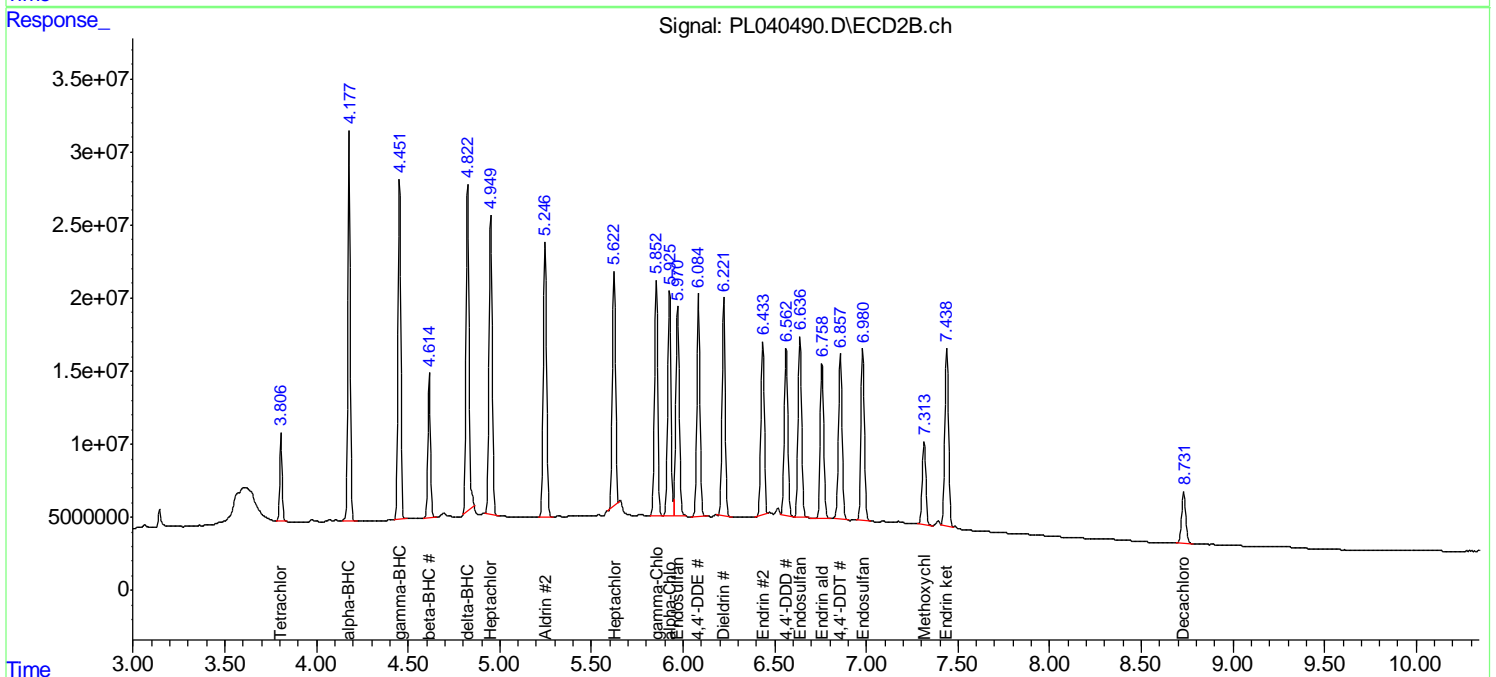
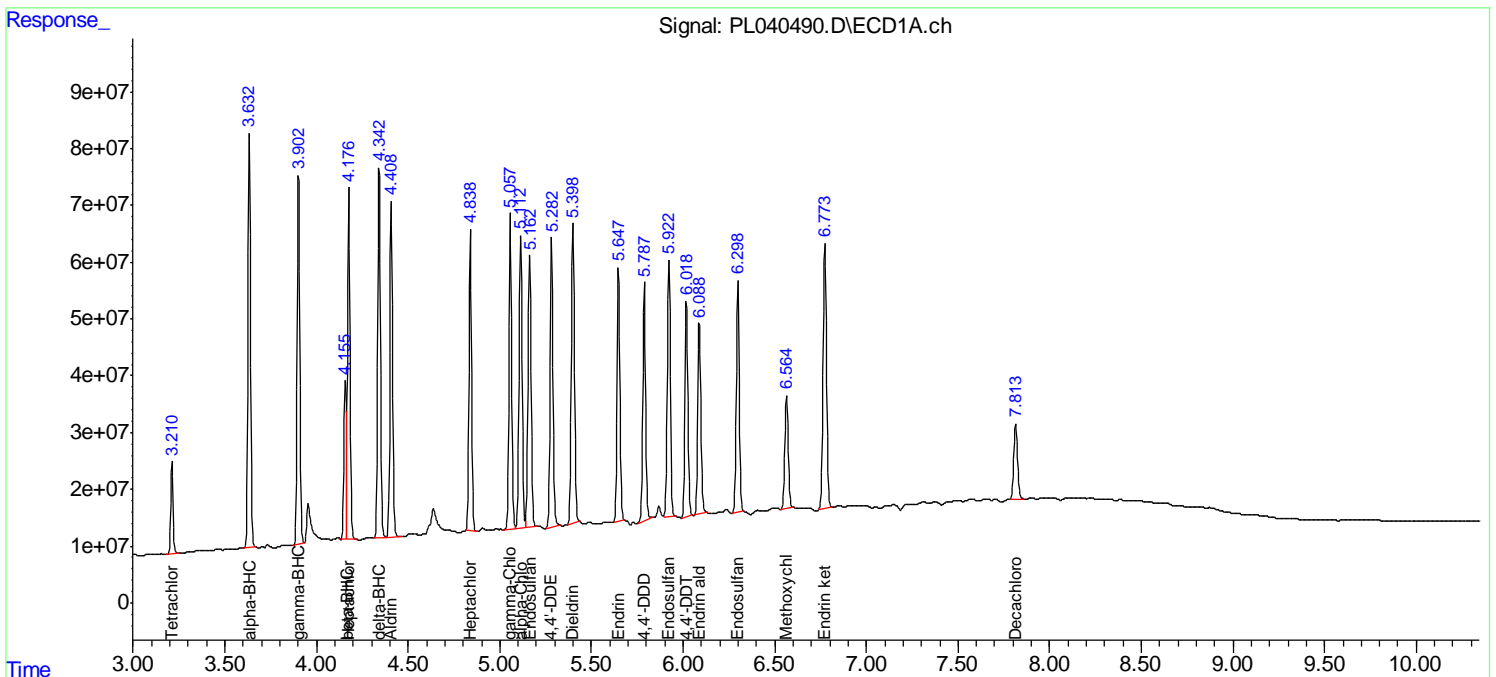
(f)=RT Delta > 1/2 Window (#)=Amounts differ by > 25% (m)=manual int.

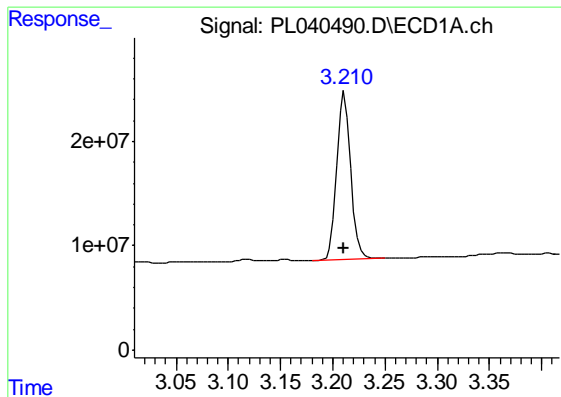
Data Path : Z:\pestpcbsrv\HPCHEM1\ECD_L\Data\PL092718\
 Data File : PL040490.D
 Signal(s) : Signal #1: ECD1A.ch Signal #2: ECD2B.ch
 Acq On : 28 Sep 2018 04:30
 Operator : AJ\SJ
 Sample : J5097-01MSD
 Misc :
 ALS Vial : 63 Sample Multiplier: 1

Instrument :
 ECD_L
 ClientSampled :
 TP-1MSD

Integration File signal 1: autoint1.e
 Integration File signal 2: autoint2.e
 Quant Time: Sep 28 06:03:44 2018
 Quant Method : Z:\pestpcbsrv\HPCHEM1\ECD_L\methods\PL092618.M
 Quant Title : GC Extractables
 QLast Update : Thu Sep 27 01:27:39 2018
 Response via : Initial Calibration
 Integrator: ChemStation

Volume Inj. : 2 µl
 Signal #1 Phase : ZB-MR1 Signal #2 Phase: ZB-MR2
 Signal #1 Info : 30M x 0.32mm x0.5 Signal #2 Info : 30M x 0.32mm x0.25µm

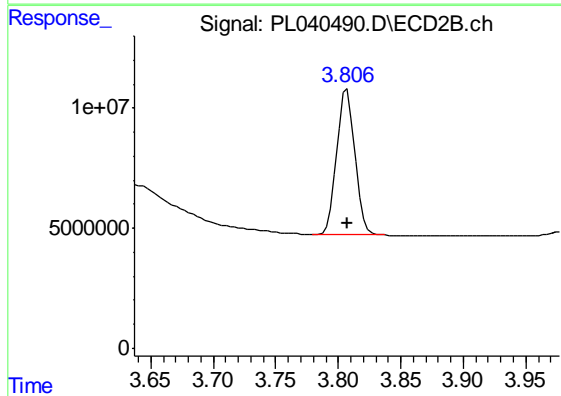




#1 Tetrachloro-m-xylene

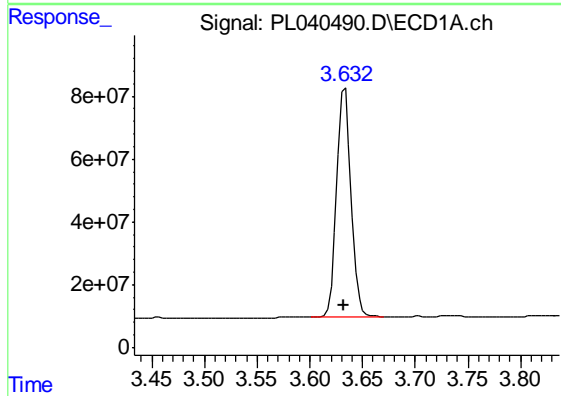
R.T.: 3.211 min
Delta R.T.: 0.000 min
Response: 150402703
Conc: 20.55 ng/ml

Instrument :
ECD_L
ClientSampleId :
TP-1MSD



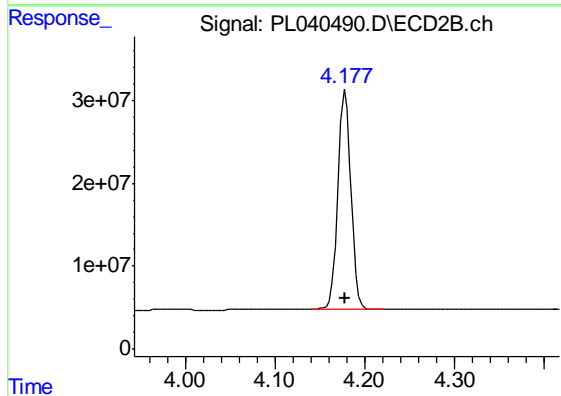
#1 Tetrachloro-m-xylene

R.T.: 3.807 min
Delta R.T.: 0.000 min
Response: 61724734
Conc: 19.55 ng/ml



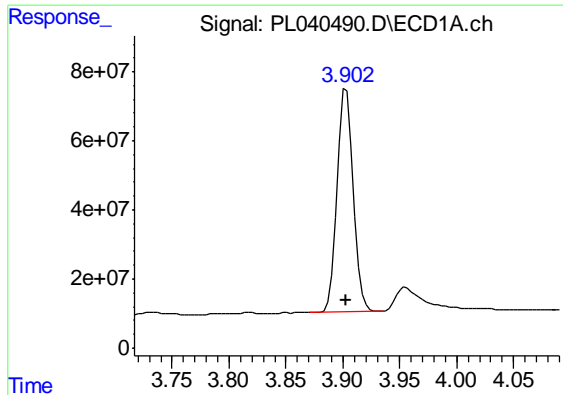
#2 alpha-BHC

R.T.: 3.633 min
Delta R.T.: 0.000 min
Response: 692612415
Conc: 59.20 ng/ml



#2 alpha-BHC

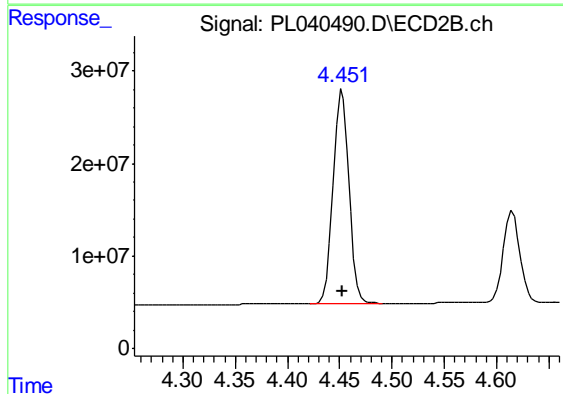
R.T.: 4.179 min
Delta R.T.: 0.000 min
Response: 268795962
Conc: 56.69 ng/ml



#3 gamma-BHC (Lindane)

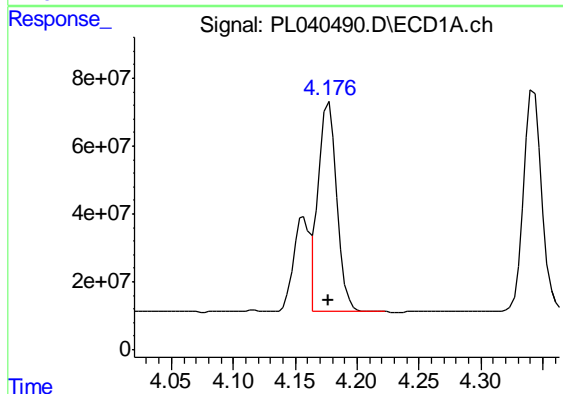
R.T.: 3.903 min
Delta R.T.: 0.000 min
Response: 633281668
Conc: 58.25 ng/ml

Instrument :
ECD_L
ClientSampleId :
TP-1MSD



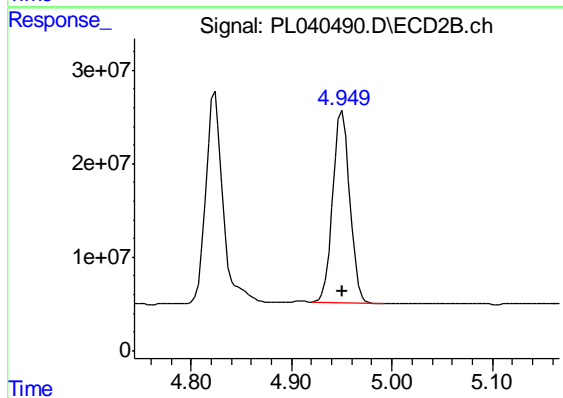
#3 gamma-BHC (Lindane)

R.T.: 4.453 min
Delta R.T.: 0.000 min
Response: 244443445
Conc: 53.86 ng/ml



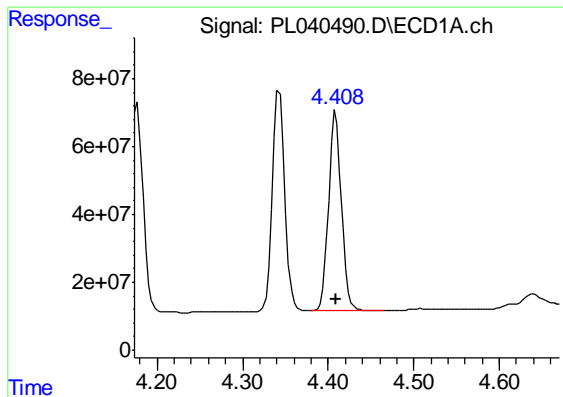
#4 Heptachlor

R.T.: 4.177 min
Delta R.T.: 0.000 min
Response: 668293634
Conc: 56.79 ng/ml



#4 Heptachlor

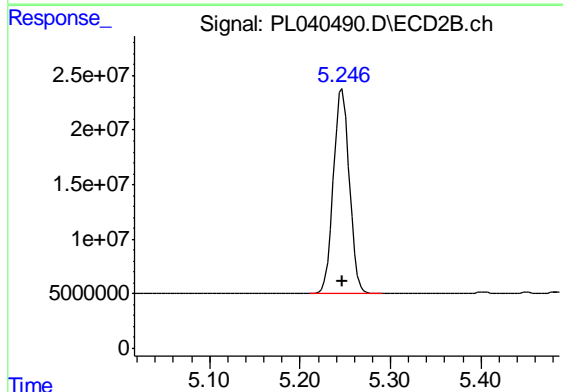
R.T.: 4.951 min
Delta R.T.: 0.000 min
Response: 239863828
Conc: 56.47 ng/ml



#5 Aldrin

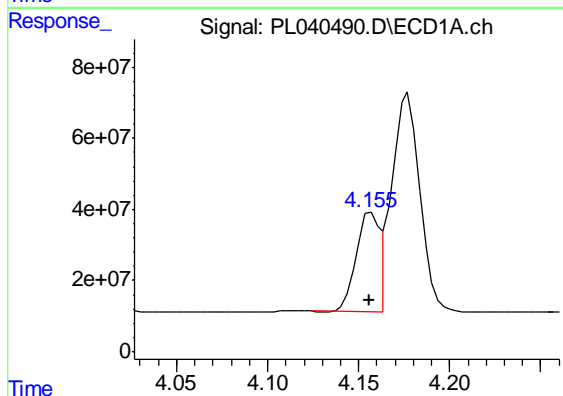
R.T.: 4.409 min
 Delta R.T.: 0.000 min
 Response: 621130613
 Conc: 58.78 ng/ml

Instrument :
 ECD_L
 ClientSampleId :
 TP-1MSD



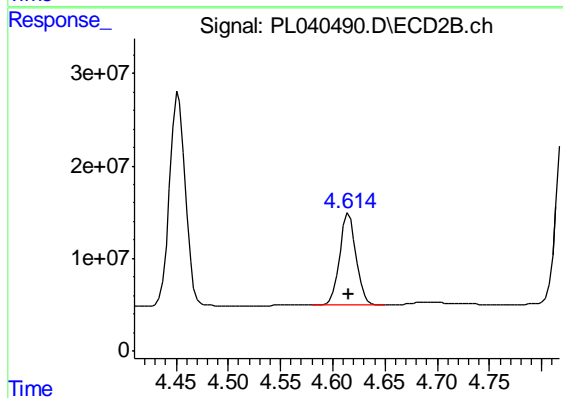
#5 Aldrin

R.T.: 5.247 min
 Delta R.T.: 0.000 min
 Response: 228113262
 Conc: 54.05 ng/ml



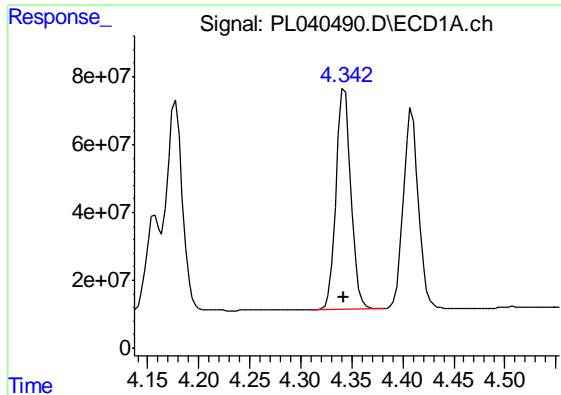
#6 beta-BHC

R.T.: 4.157 min
 Delta R.T.: 0.000 min
 Response: 236684454
 Conc: 56.07 ng/ml



#6 beta-BHC

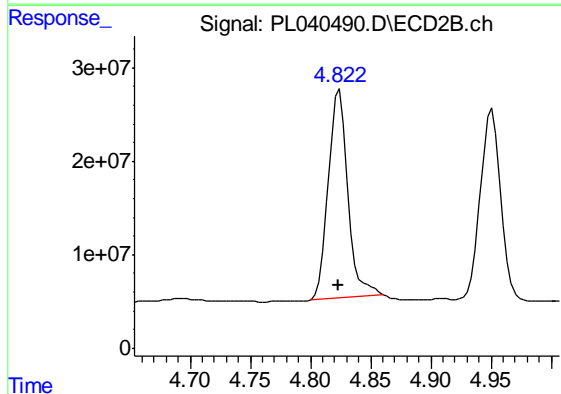
R.T.: 4.616 min
 Delta R.T.: 0.000 min
 Response: 108919788
 Conc: 54.51 ng/ml



#7 delta-BHC

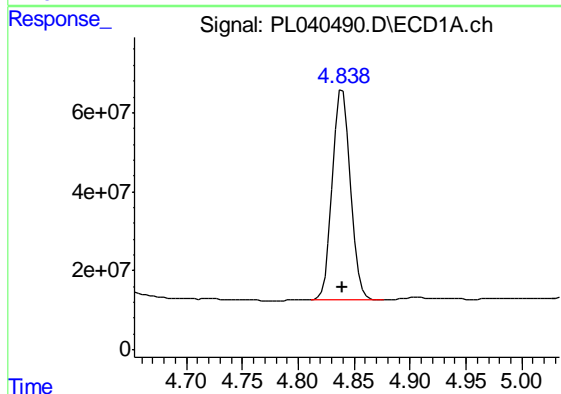
R.T.: 4.343 min
Delta R.T.: 0.000 min
Response: 657557128
Conc: 58.92 ng/ml

Instrument :
ECD_L
ClientSampleId :
TP-1MSD



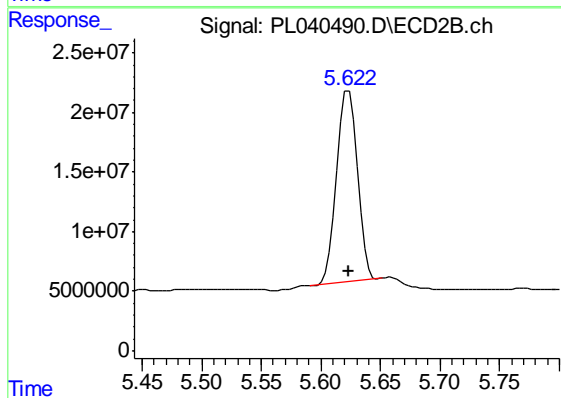
#7 delta-BHC

R.T.: 4.824 min
Delta R.T.: 0.000 min
Response: 252880419
Conc: 54.79 ng/ml



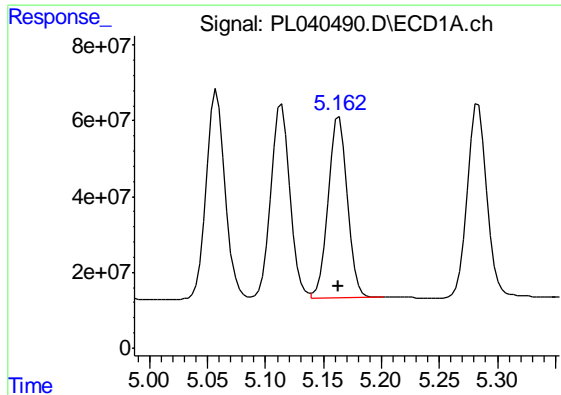
#8 Heptachlor epoxide

R.T.: 4.840 min
Delta R.T.: 0.000 min
Response: 588918381
Conc: 56.89 ng/ml



#8 Heptachlor epoxide

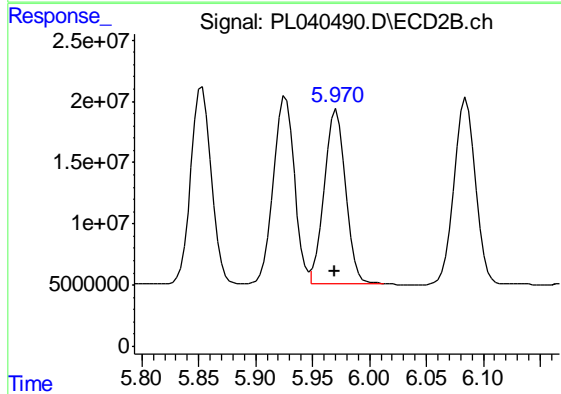
R.T.: 5.623 min
Delta R.T.: 0.000 min
Response: 194222705
Conc: 50.60 ng/ml



#9 Endosulfan I

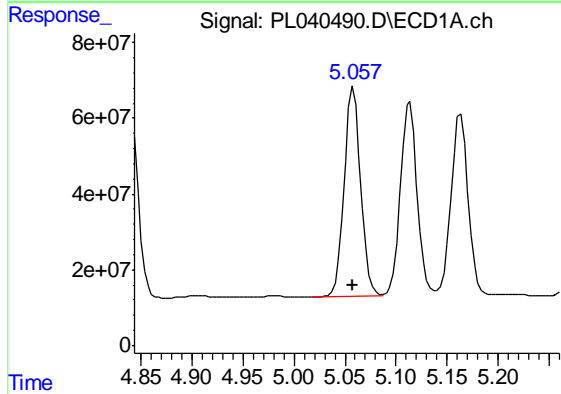
R.T.: 5.164 min
 Delta R.T.: 0.000 min
 Response: 553035909
 Conc: 54.87 ng/ml

Instrument :
 ECD_L
 ClientSampled :
 TP-1MSD



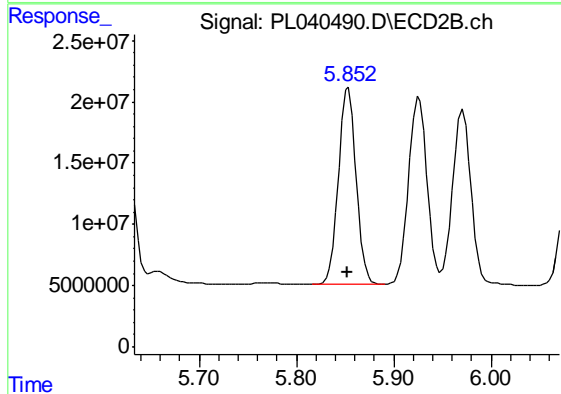
#9 Endosulfan I

R.T.: 5.971 min
 Delta R.T.: 0.001 min
 Response: 182298351
 Conc: 49.00 ng/ml



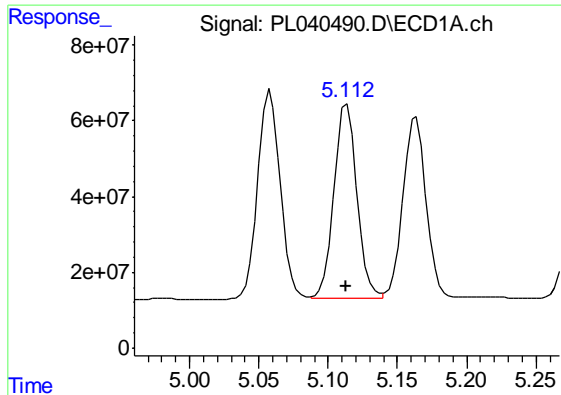
#10 gamma-Chlordane

R.T.: 5.058 min
 Delta R.T.: 0.000 min
 Response: 614015309
 Conc: 56.54 ng/ml



#10 gamma-Chlordane

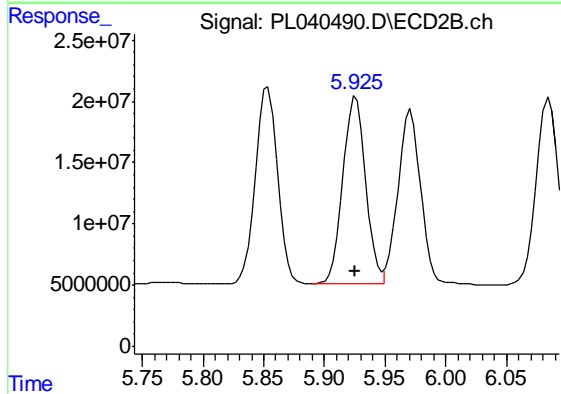
R.T.: 5.854 min
 Delta R.T.: 0.000 min
 Response: 203998076
 Conc: 51.62 ng/ml



#11 alpha-Chlordane

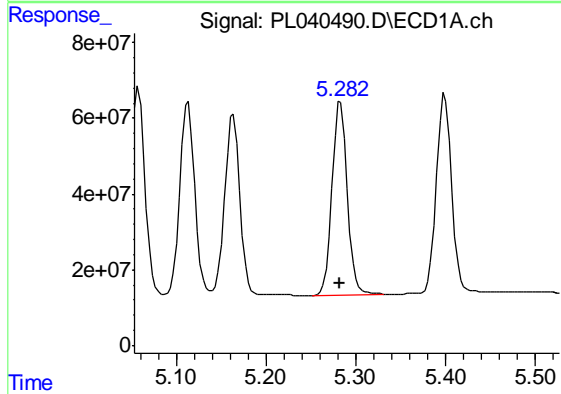
R.T.: 5.114 min
 Delta R.T.: 0.000 min
 Response: 589284456
 Conc: 56.25 ng/ml

Instrument :
 ECD_L
 ClientSampled :
 TP-1MSD



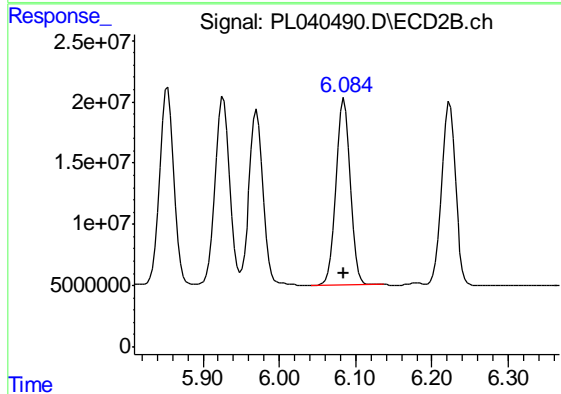
#11 alpha-Chlordane

R.T.: 5.926 min
 Delta R.T.: 0.000 min
 Response: 198939891
 Conc: 50.69 ng/ml



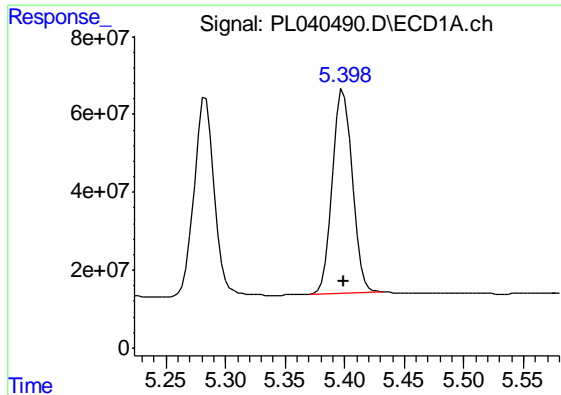
#12 4,4'-DDE

R.T.: 5.283 min
 Delta R.T.: 0.000 min
 Response: 604027231
 Conc: 54.65 ng/ml



#12 4,4'-DDE

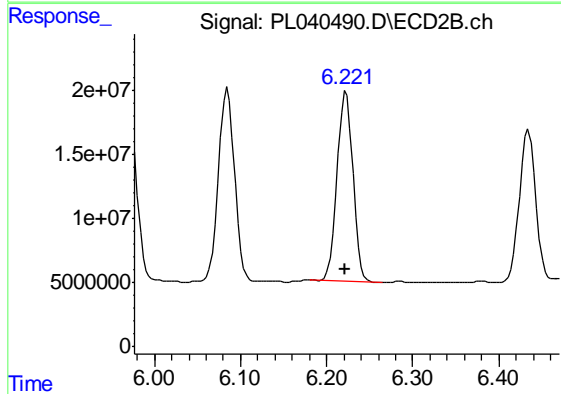
R.T.: 6.085 min
 Delta R.T.: 0.000 min
 Response: 196102744
 Conc: 48.70 ng/ml



#13 Dieldrin

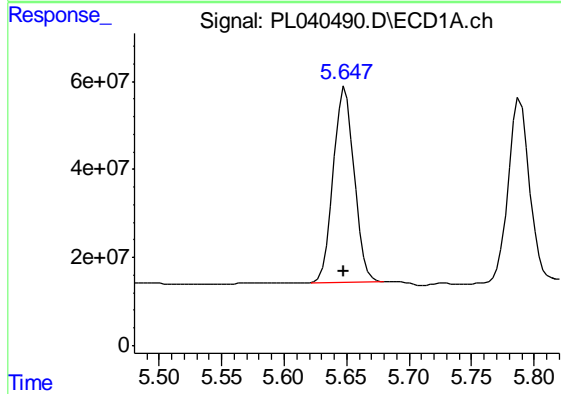
R.T.: 5.399 min
 Delta R.T.: 0.000 min
 Response: 603933348
 Conc: 55.13 ng/ml

Instrument :
 ECD_L
 ClientSampleId :
 TP-1MSD



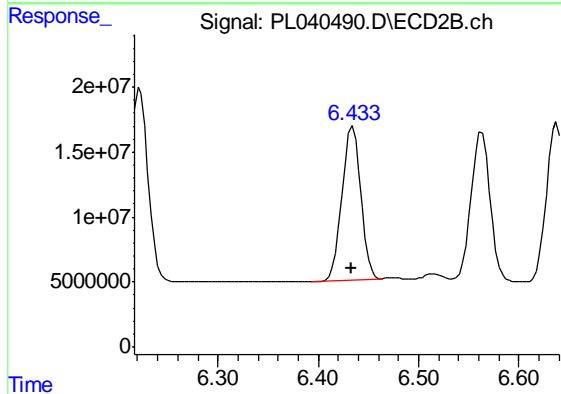
#13 Dieldrin

R.T.: 6.223 min
 Delta R.T.: 0.000 min
 Response: 189881158
 Conc: 49.70 ng/ml



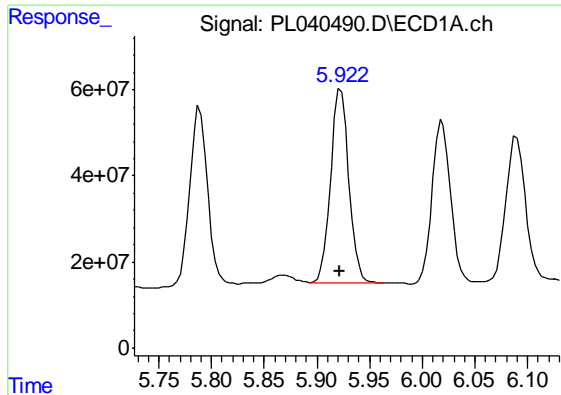
#14 Endrin

R.T.: 5.649 min
 Delta R.T.: 0.000 min
 Response: 518419429
 Conc: 52.19 ng/ml



#14 Endrin

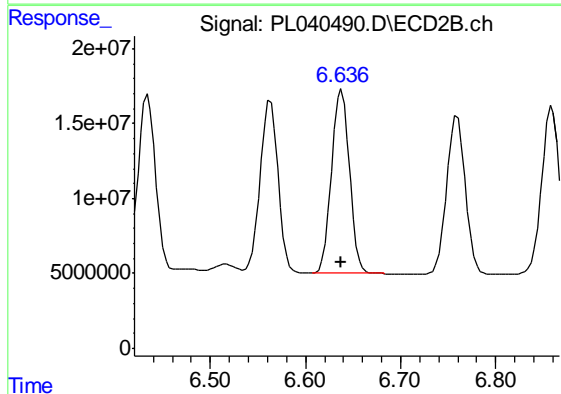
R.T.: 6.434 min
 Delta R.T.: 0.000 min
 Response: 152433822
 Conc: 46.66 ng/ml



#15 Endosulfan II

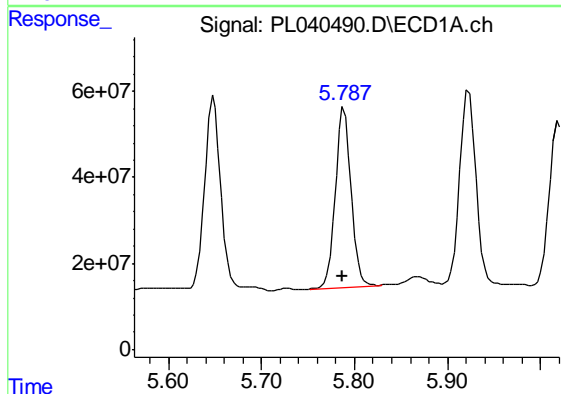
R.T.: 5.923 min
 Delta R.T.: 0.000 min
 Response: 542471702
 Conc: 54.45 ng/ml

Instrument :
 ECD_L
 ClientSampleId :
 TP-1MSD



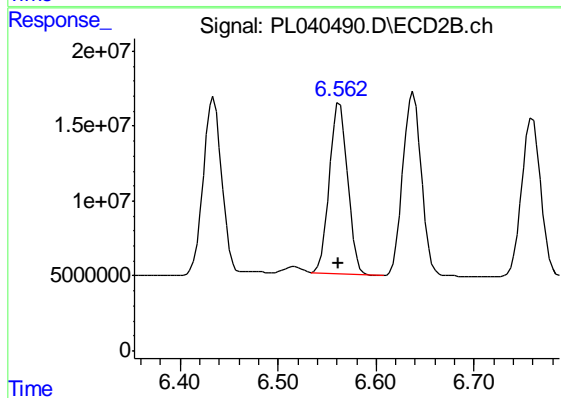
#15 Endosulfan II

R.T.: 6.638 min
 Delta R.T.: 0.000 min
 Response: 161186834
 Conc: 46.11 ng/ml



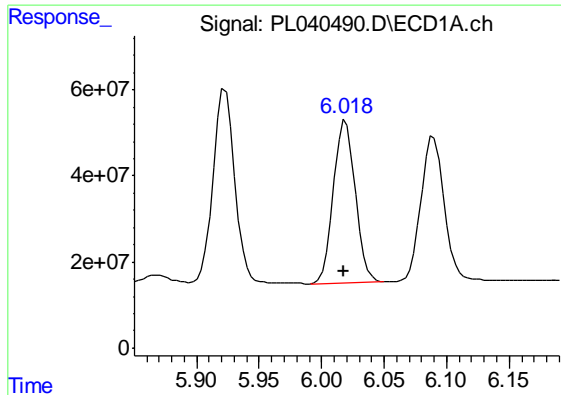
#16 4,4'-DDD

R.T.: 5.789 min
 Delta R.T.: 0.002 min
 Response: 489366149
 Conc: 53.01 ng/ml



#16 4,4'-DDD

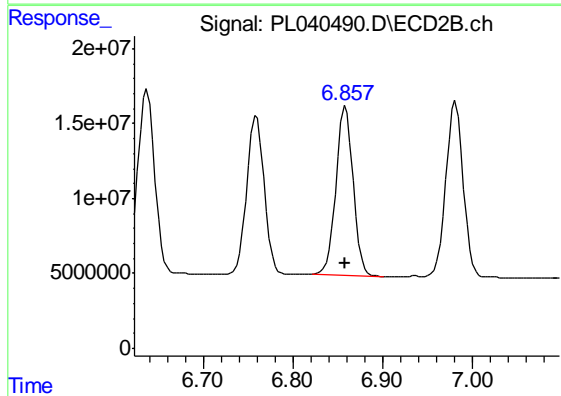
R.T.: 6.563 min
 Delta R.T.: 0.000 min
 Response: 149808667
 Conc: 47.15 ng/ml



#17 4,4'-DDT

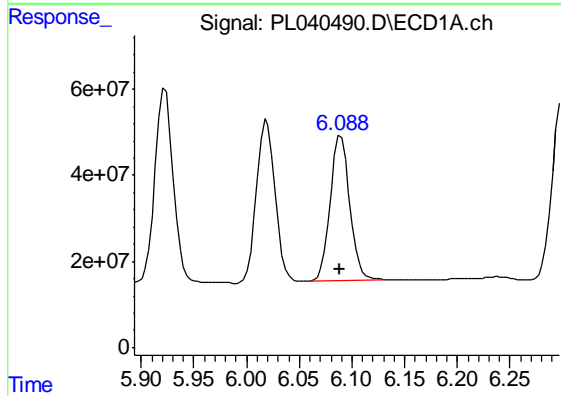
R.T.: 6.019 min
 Delta R.T.: 0.001 min
 Response: 460082892
 Conc: 56.89 ng/ml

Instrument :
 ECD_L
 ClientSampleId :
 TP-1MSD



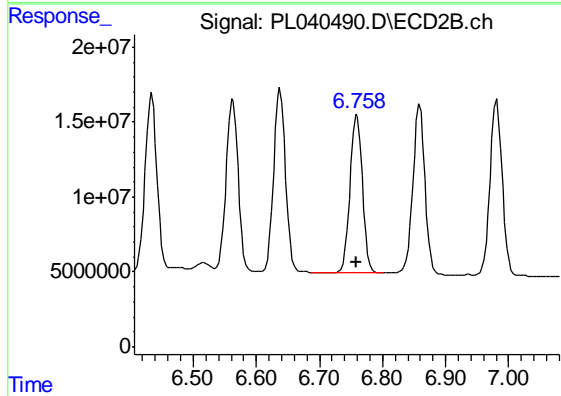
#17 4,4'-DDT

R.T.: 6.859 min
 Delta R.T.: 0.001 min
 Response: 148765680
 Conc: 48.82 ng/ml



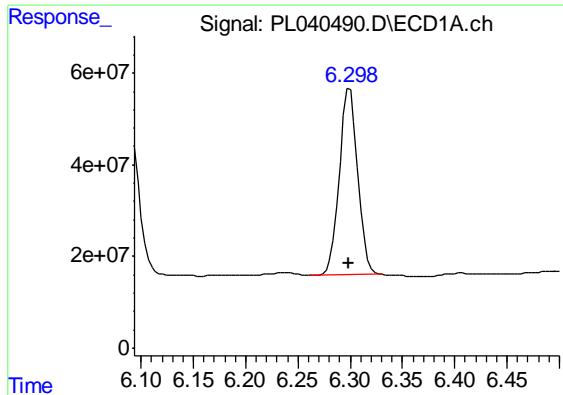
#18 Endrin aldehyde

R.T.: 6.090 min
 Delta R.T.: 0.001 min
 Response: 431348617
 Conc: 51.37 ng/ml



#18 Endrin aldehyde

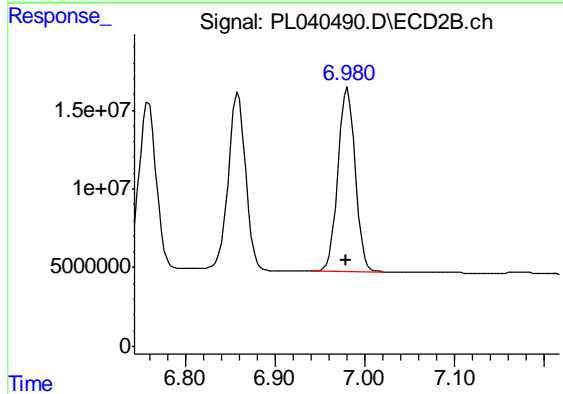
R.T.: 6.759 min
 Delta R.T.: 0.000 min
 Response: 142754163
 Conc: 47.69 ng/ml



#19 Endosulfan Sulfate

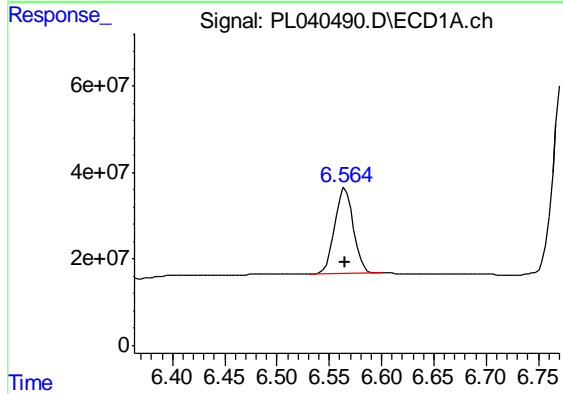
R.T.: 6.300 min
 Delta R.T.: 0.001 min
 Response: 502195345
 Conc: 52.47 ng/ml

Instrument :
 ECD_L
 ClientSampleId :
 TP-1MSD



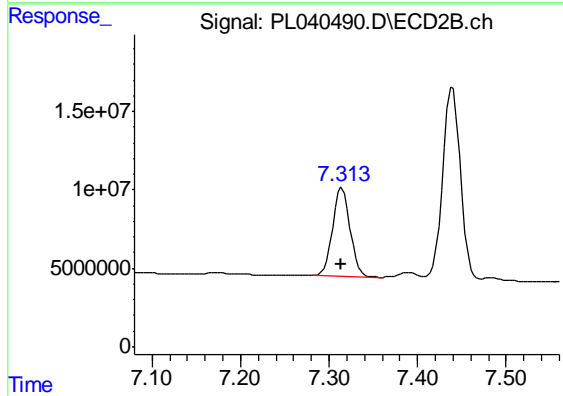
#19 Endosulfan Sulfate

R.T.: 6.981 min
 Delta R.T.: 0.001 min
 Response: 155785915
 Conc: 48.43 ng/ml



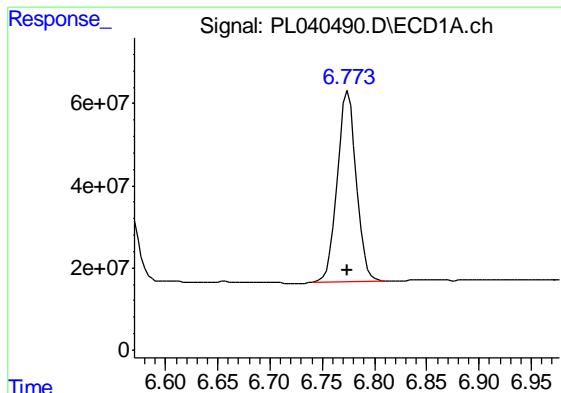
#20 Methoxychlor

R.T.: 6.565 min
 Delta R.T.: 0.000 min
 Response: 247923791
 Conc: 51.33 ng/ml



#20 Methoxychlor

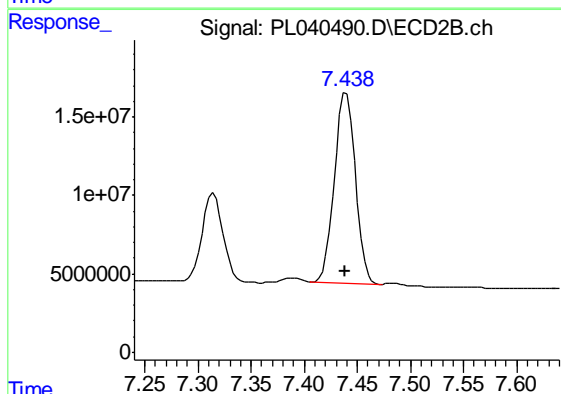
R.T.: 7.315 min
 Delta R.T.: 0.000 min
 Response: 77638186
 Conc: 50.95 ng/ml



#21 Endrin ketone

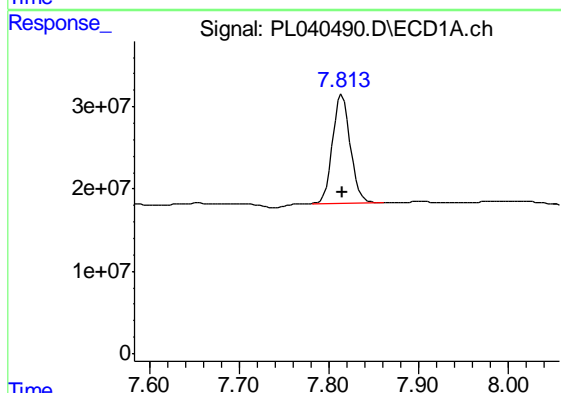
R.T.: 6.775 min
 Delta R.T.: 0.000 min
 Response: 586444694
 Conc: 54.05 ng/ml

Instrument :
 ECD_L
 ClientSampleId :
 TP-1MSD



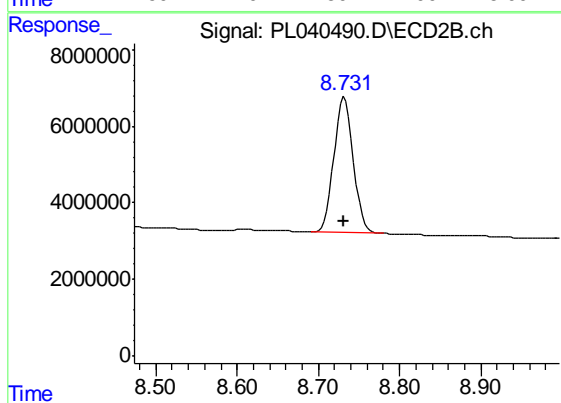
#21 Endrin ketone

R.T.: 7.440 min
 Delta R.T.: 0.001 min
 Response: 165711211
 Conc: 53.91 ng/ml



#28 Decachlorobiphenyl

R.T.: 7.815 min
 Delta R.T.: 0.000 min
 Response: 182707650
 Conc: 19.22 ng/ml



#28 Decachlorobiphenyl

R.T.: 8.732 min
 Delta R.T.: 0.000 min
 Response: 58998108
 Conc: 18.63 ng/ml