

Data Path : Z:\pestpcbsrv\HPCHEM1\ECD_L\Data\PL092722\
 Data File : PL077940.D
 Signal(s) : Signal #1: ECD1A.ch Signal #2: ECD2B.ch
 Acq On : 27 Sep 2022 15:19
 Operator : AR\AJ
 Sample : I.BLK
 Misc :
 ALS Vial : 2 Sample Multiplier: 1

Instrument :
 ECD_L
 ClientSampleId :
 I.BLK

Integration File signal 1: autoint1.e
 Integration File signal 2: autoint2.e
 Quant Time: Sep 27 23:49:00 2022
 Quant Method : Z:\pestpcbsrv\HPCHEM1\ECD_L\methods\PL091222.M
 Quant Title : GC Extractables
 QLast Update : Tue Sep 13 13:26:11 2022
 Response via : Initial Calibration
 Integrator: ChemStation

Volume Inj. : 1 µl
 Signal #1 Phase : ZB-MR2 Signal #2 Phase: ZB-MR1
 Signal #1 Info : 30M x 0.32mm x0.2 Signal #2 Info : 30M x 0.32mm x0.5µm

Compound	RT#1	RT#2	Resp#1	Resp#2	ng/ml	ng/ml

System Monitoring Compounds						
1) SA Tetrachlo...	3.415	2.624	33297502	61468695	20.772	20.705
28) SA Decachlor...	8.905	7.723	28933686	44821864	22.387	17.856

Target Compounds

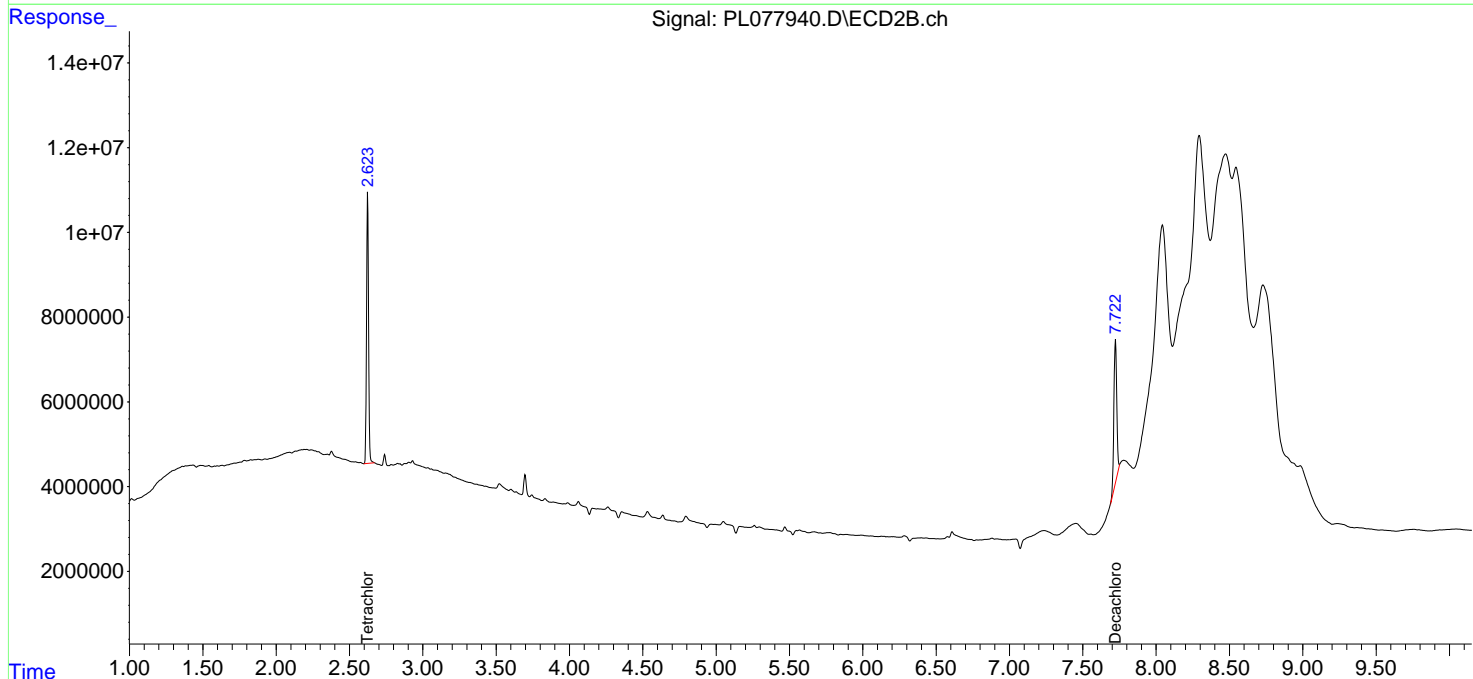
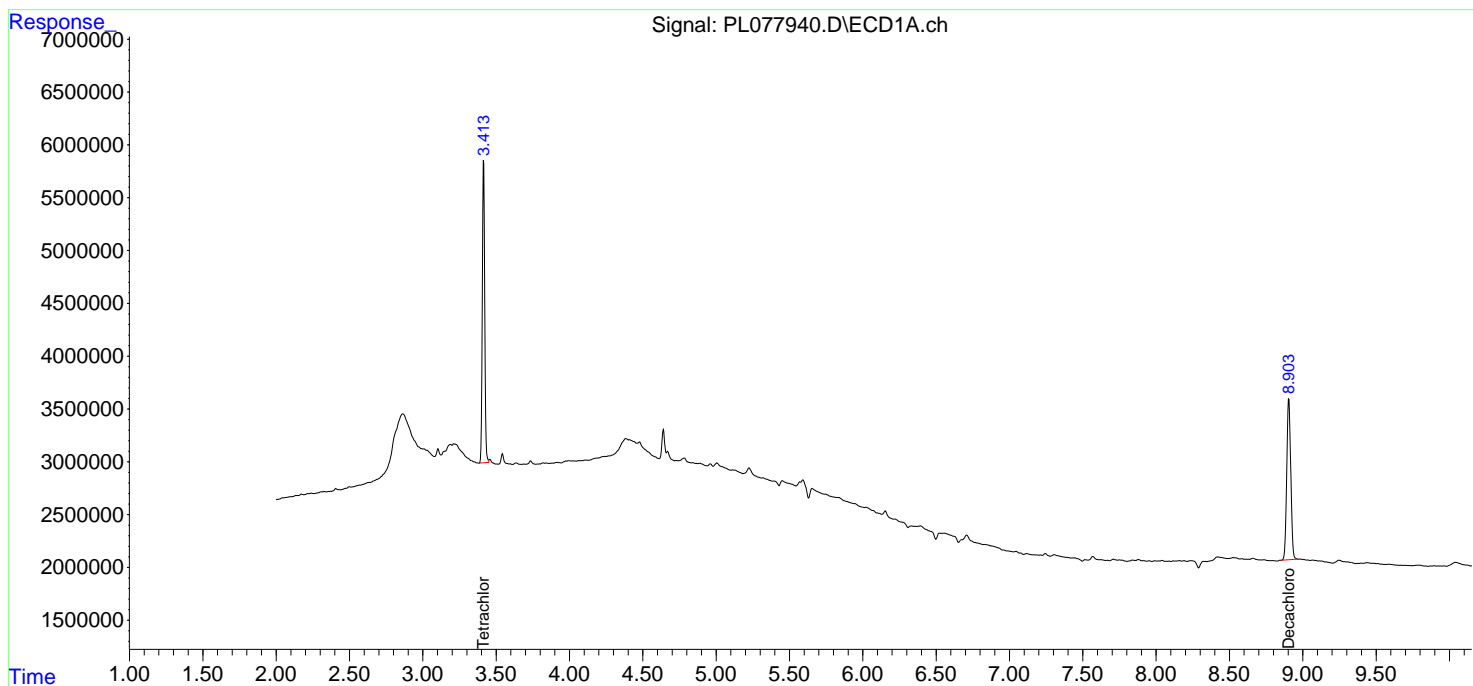
(f)=RT Delta > 1/2 Window (#)=Amounts differ by > 25% (m)=manual int.

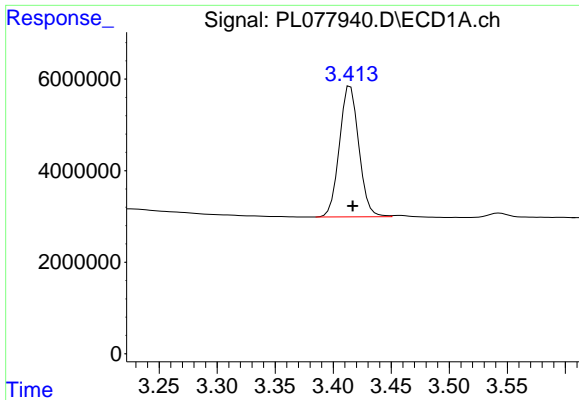
Data Path : Z:\pestpcbsrv\HPCHEM1\ECD_L\Data\PL092722\
 Data File : PL077940.D
 Signal(s) : Signal #1: ECD1A.ch Signal #2: ECD2B.ch
 Acq On : 27 Sep 2022 15:19
 Operator : AR\AJ
 Sample : I.BLK
 Misc :
 ALS Vial : 2 Sample Multiplier: 1

Instrument :
 ECD_L
 ClientSampleId :
 I.BLK

Integration File signal 1: autoint1.e
 Integration File signal 2: autoint2.e
 Quant Time: Sep 27 23:49:00 2022
 Quant Method : Z:\pestpcbsrv\HPCHEM1\ECD_L\methods\PL091222.M
 Quant Title : GC Extractables
 QLast Update : Tue Sep 13 13:26:11 2022
 Response via : Initial Calibration
 Integrator: ChemStation

Volume Inj. : 1 µl
 Signal #1 Phase : ZB-MR2 Signal #2 Phase: ZB-MR1
 Signal #1 Info : 30M x 0.32mm x0.2 Signal #2 Info : 30M x 0.32mm x0.5µm

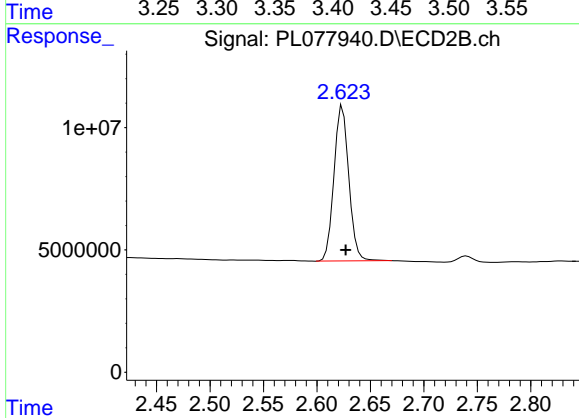




#1 Tetrachloro-m-xylene

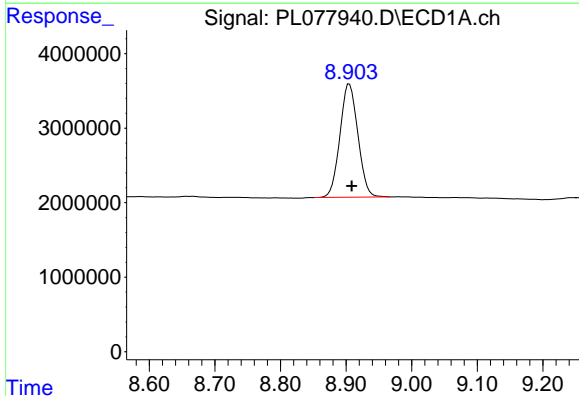
R.T.: 3.415 min
 Delta R.T.: -0.002 min
 Response: 33297502
 Conc: 20.77 ng/ml

Instrument :
 ECD_L
 ClientSampleId :
 I.BLK



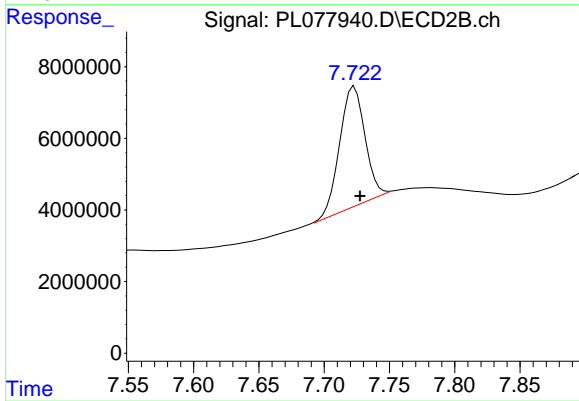
#1 Tetrachloro-m-xylene

R.T.: 2.624 min
 Delta R.T.: -0.003 min
 Response: 61468695
 Conc: 20.71 ng/ml



#28 Decachlorobiphenyl

R.T.: 8.905 min
 Delta R.T.: -0.004 min
 Response: 28933686
 Conc: 22.39 ng/ml



#28 Decachlorobiphenyl

R.T.: 7.723 min
 Delta R.T.: -0.004 min
 Response: 44821864
 Conc: 17.86 ng/ml