

Data Path : Z:\pestpcbsrv\HPCHEM1\ECD_L\Data\PL092722\
 Data File : PL077941.D
 Signal(s) : Signal #1: ECD1A.ch Signal #2: ECD2B.ch
 Acq On : 27 Sep 2022 15:33
 Operator : AR\AJ
 Sample : PSTDCCC050
 Misc :
 ALS Vial : 4 Sample Multiplier: 1

Instrument :
 ECD_L
 ClientSampleId :
 PSTDCCC050

Integration File signal 1: autoint1.e
 Integration File signal 2: autoint2.e
 Quant Time: Sep 27 23:49:22 2022
 Quant Method : Z:\pestpcbsrv\HPCHEM1\ECD_L\methods\PL091222.M
 Quant Title : GC Extractables
 QLast Update : Tue Sep 13 13:26:11 2022
 Response via : Initial Calibration
 Integrator: ChemStation

Volume Inj. : 1 µl
 Signal #1 Phase : ZB-MR2 Signal #2 Phase: ZB-MR1
 Signal #1 Info : 30M x 0.32mm x0.2 Signal #2 Info : 30M x 0.32mm x0.5µm

Compound	RT#1	RT#2	Resp#1	Resp#2	ng/ml	ng/ml

System Monitoring Compounds						
1) SA Tetrachlo...	3.415	2.624	79813187	144.0E6	49.790	48.507
28) SA Decachlor...	8.906	7.722	63318617	108.6E6	48.992	43.270
Target Compounds						
2) A alpha-BHC	3.880	3.116	120.3E6	225.0E6	50.683	49.621
3) MA gamma-BHC...	4.215	3.440	112.2E6	203.0E6	50.693	50.280
4) MA Heptachlor	4.791	3.772	112.5E6	193.5E6	50.794	48.865
5) MB Aldrin	5.132	4.046	101.2E6	187.1E6	50.940	49.301
6) B beta-BHC	4.428	3.740	49240150	79453211	50.665	47.725
7) B delta-BHC	4.672	3.963	103.8E6	200.1E6	50.565	49.320
8) B Heptachlo...	5.565	4.545	91909822	165.6E6	52.722	48.984
9) A Endosulfan I	5.951	4.910	82066364	154.3E6	50.919	48.917
10) B gamma-Chl...	5.820	4.794	89520001	167.8E6	51.128	49.245
11) B alpha-Chl...	5.897	4.856	87708816	162.5E6	50.777	49.081
12) B 4,4'-DDE	6.077	5.051	82689655	162.3E6	51.945	49.894
13) MA Dieldrin	6.228	5.173	82066191	165.1E6	50.845	49.800
14) MA Endrin	6.460	5.446	68613067	141.0E6	49.612	49.463
15) B Endosulfa...	6.689	5.742	67362168	131.0E6	48.765	49.695
16) A 4,4'-DDD	6.601	5.603	62779076	132.8E6	53.618	51.256
17) MA 4,4'-DDT	6.913	5.852	63605202	130.4E6	50.196	49.499
18) B Endrin al...	6.820	5.922	53563213	100.1E6	50.652	48.529
19) B Endosulfa...	7.053	6.145	64659145	129.5E6	50.491	48.163
20) A Methoxychlor	7.394	6.429	32756866	65433907	49.598	47.782
21) B Endrin ke...	7.542	6.643	68621221	145.4E6	49.661	48.004
22) Mirex	8.001	6.820	52253724	101.8E6	49.766	47.339

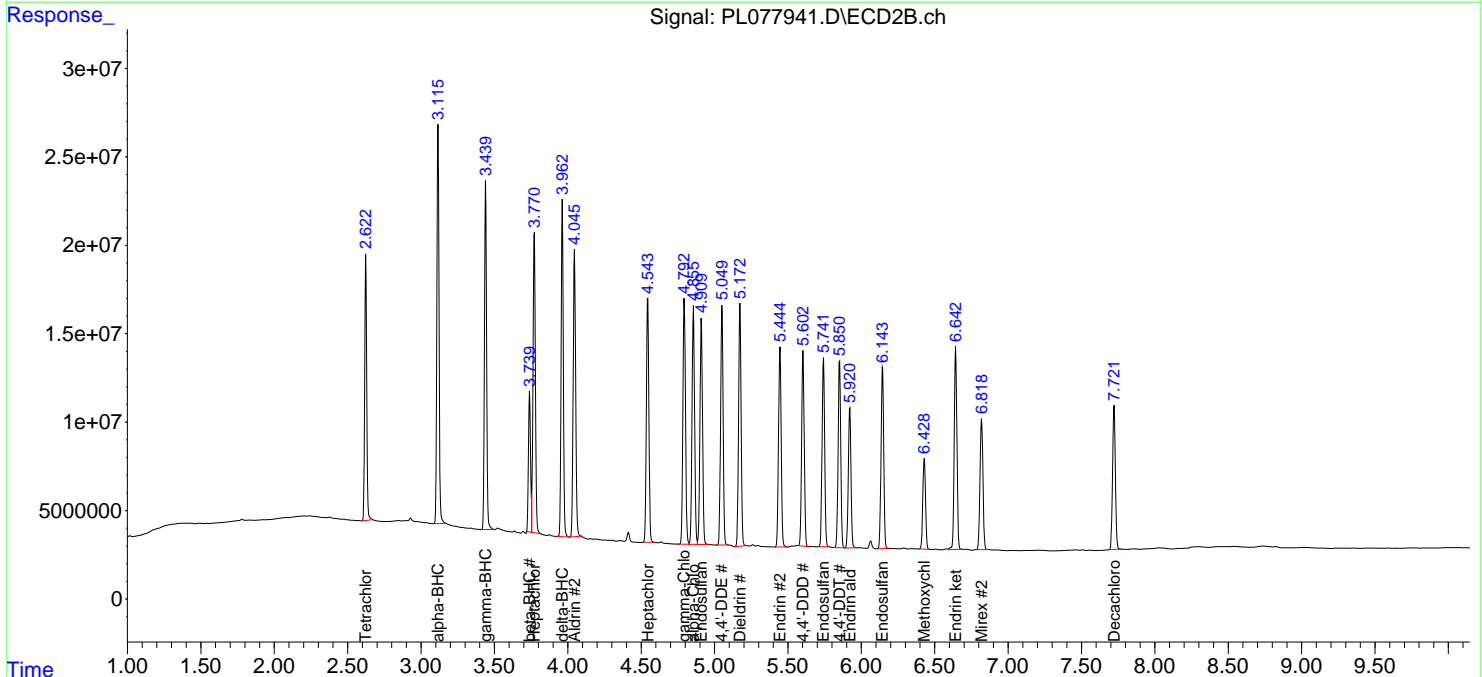
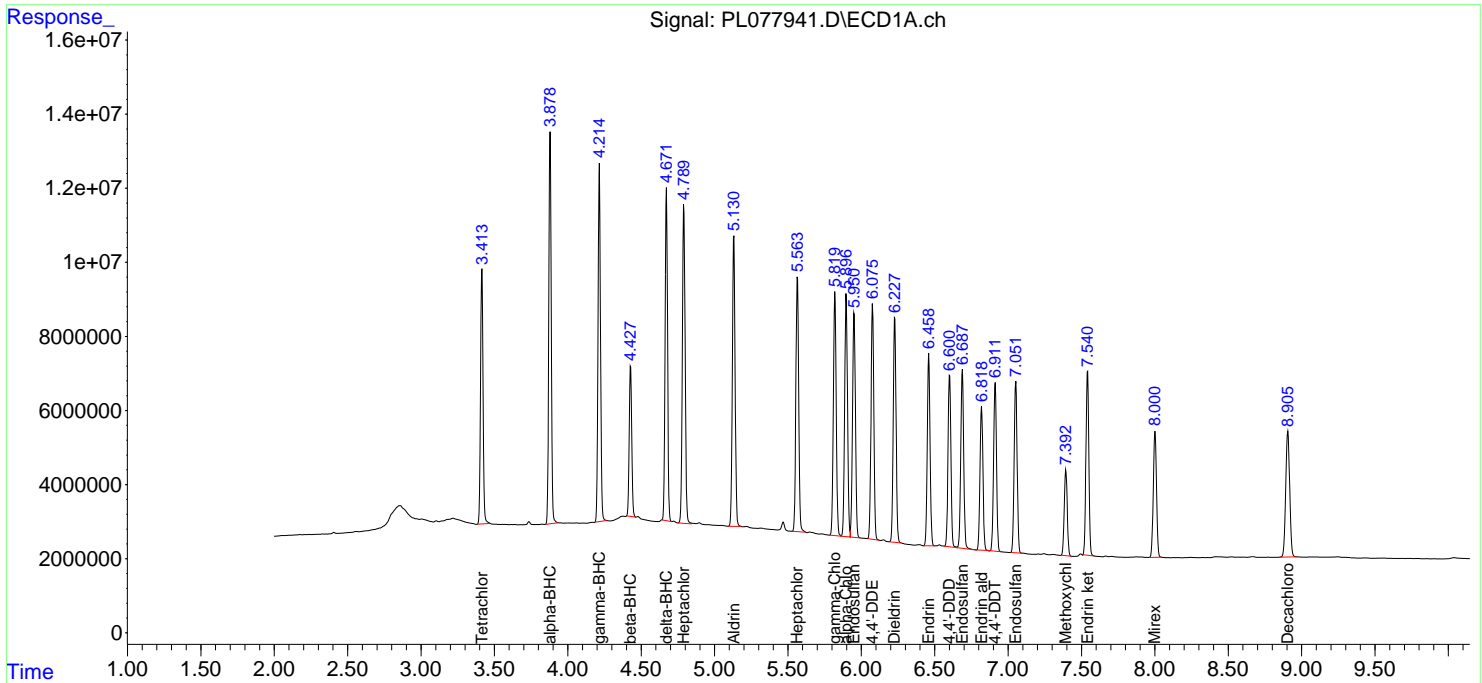
(f)=RT Delta > 1/2 Window (#)=Amounts differ by > 25% (m)=manual int.

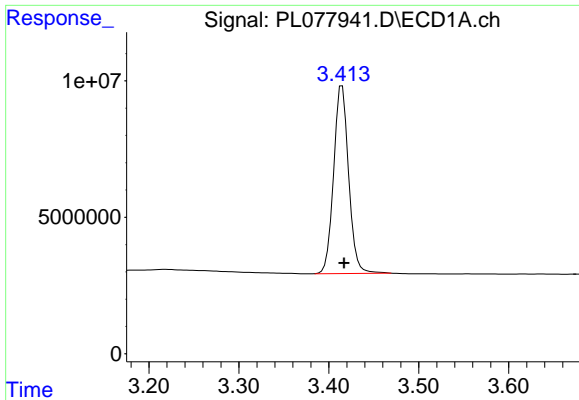
Data Path : Z:\pestpcbsrv\HPCHEM1\ECD_L\Data\PL092722\
 Data File : PL077941.D
 Signal(s) : Signal #1: ECD1A.ch Signal #2: ECD2B.ch
 Acq On : 27 Sep 2022 15:33
 Operator : AR\AJ
 Sample : PSTDCCC050
 Misc :
 ALS Vial : 4 Sample Multiplier: 1

Instrument :
 ECD_L
 ClientSampleId :
 PSTDCCC050

Integration File signal 1: autoint1.e
 Integration File signal 2: autoint2.e
 Quant Time: Sep 27 23:49:22 2022
 Quant Method : Z:\pestpcbsrv\HPCHEM1\ECD_L\methods\PL091222.M
 Quant Title : GC Extractables
 QLast Update : Tue Sep 13 13:26:11 2022
 Response via : Initial Calibration
 Integrator: ChemStation

Volume Inj. : 1 µl
 Signal #1 Phase : ZB-MR2 Signal #2 Phase: ZB-MR1
 Signal #1 Info : 30M x 0.32mm x0.2 Signal #2 Info : 30M x 0.32mm x0.5µm

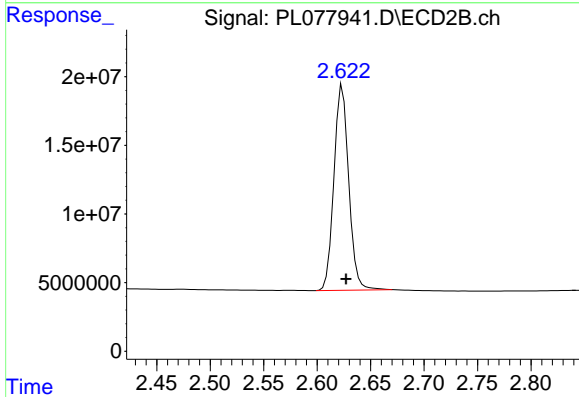




#1 Tetrachloro-m-xylene

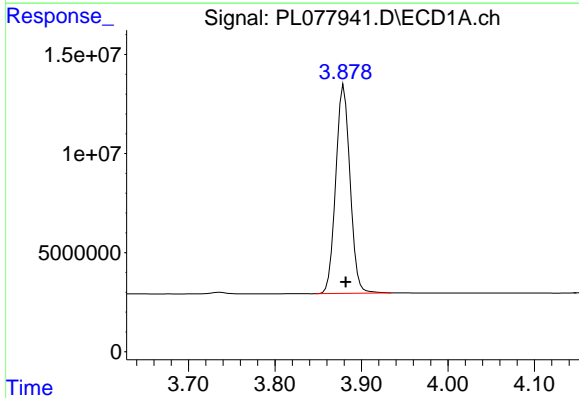
R.T.: 3.415 min
 Delta R.T.: -0.002 min
 Response: 79813187
 Conc: 49.79 ng/ml

Instrument :
 ECD_L
 ClientSampleId :
 PSTDCCC050



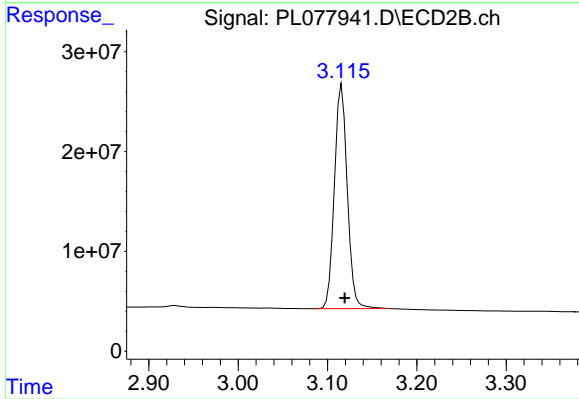
#1 Tetrachloro-m-xylene

R.T.: 2.624 min
 Delta R.T.: -0.003 min
 Response: 144005919
 Conc: 48.51 ng/ml



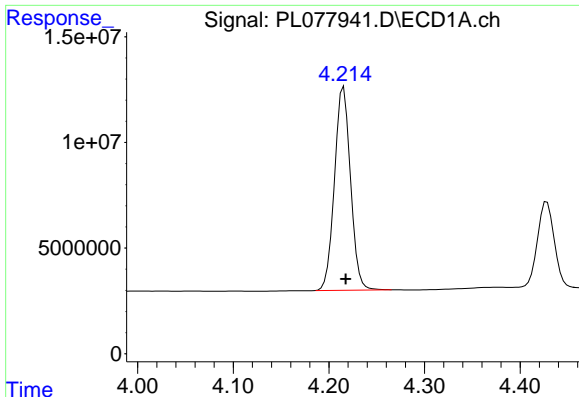
#2 alpha-BHC

R.T.: 3.880 min
 Delta R.T.: -0.002 min
 Response: 120274685
 Conc: 50.68 ng/ml



#2 alpha-BHC

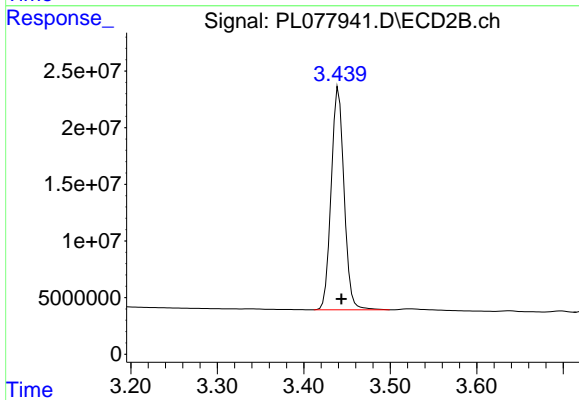
R.T.: 3.116 min
 Delta R.T.: -0.003 min
 Response: 225037880
 Conc: 49.62 ng/ml



#3 gamma-BHC (Lindane)

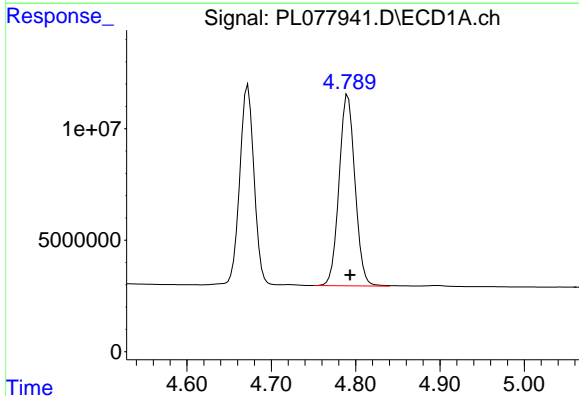
R.T.: 4.215 min
 Delta R.T.: -0.002 min
 Response: 112153508
 Conc: 50.69 ng/ml

Instrument :
 ECD_L
 ClientSampleId :
 PSTDCCC050



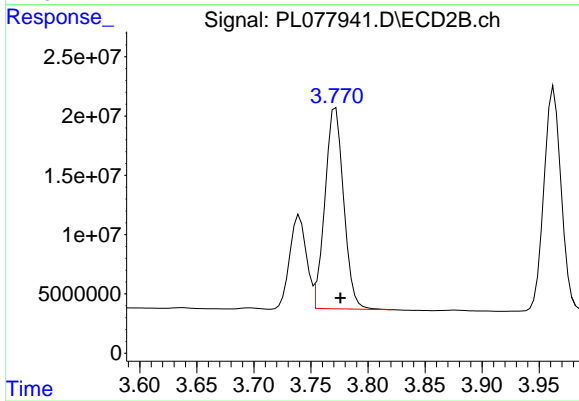
#3 gamma-BHC (Lindane)

R.T.: 3.440 min
 Delta R.T.: -0.003 min
 Response: 203039471
 Conc: 50.28 ng/ml



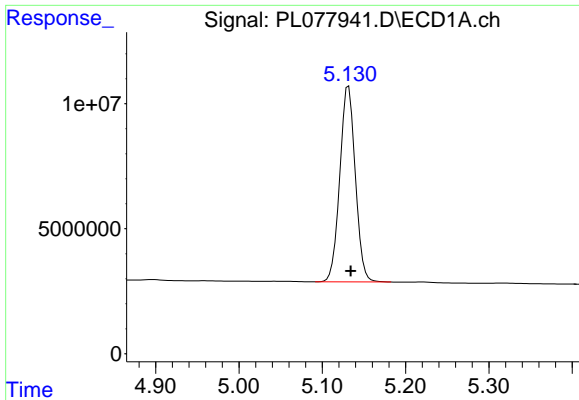
#4 Heptachlor

R.T.: 4.791 min
 Delta R.T.: -0.003 min
 Response: 112461484
 Conc: 50.79 ng/ml



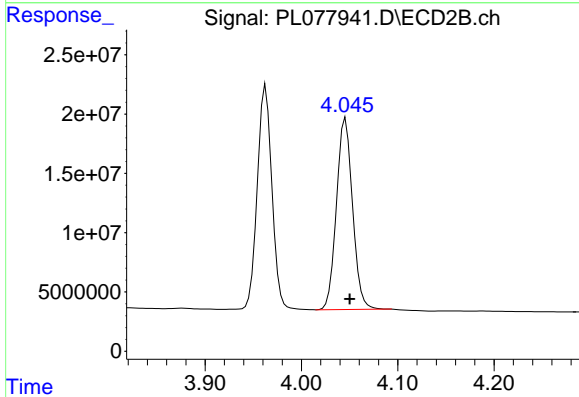
#4 Heptachlor

R.T.: 3.772 min
 Delta R.T.: -0.004 min
 Response: 193536199
 Conc: 48.87 ng/ml

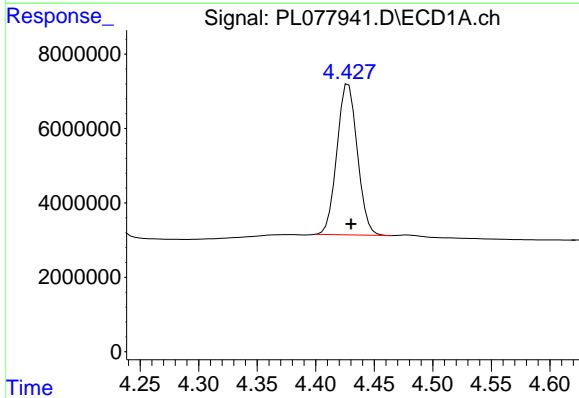


#5 Aldrin
 R.T.: 5.132 min
 Delta R.T.: -0.002 min
 Response: 101239270
 Conc: 50.94 ng/ml

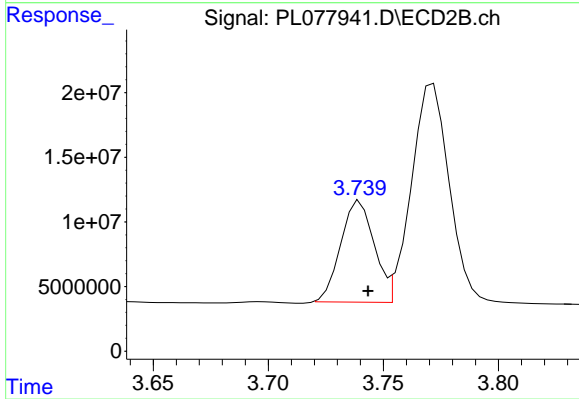
Instrument :
 ECD_L
 ClientSampleId :
 PSTDCCC050



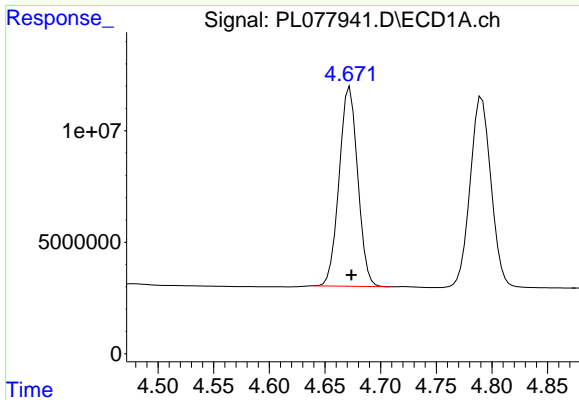
#5 Aldrin
 R.T.: 4.046 min
 Delta R.T.: -0.004 min
 Response: 187090012
 Conc: 49.30 ng/ml



#6 beta-BHC
 R.T.: 4.428 min
 Delta R.T.: -0.002 min
 Response: 49240150
 Conc: 50.66 ng/ml



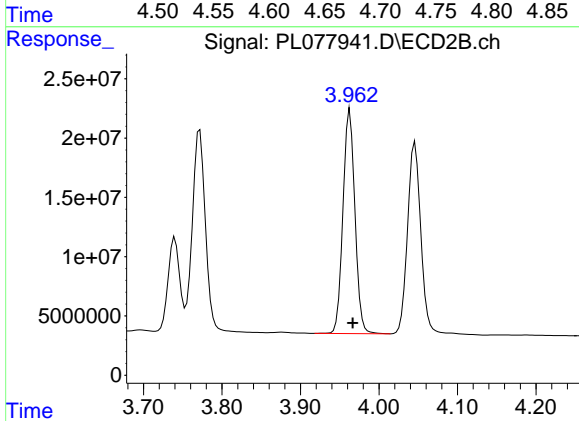
#6 beta-BHC
 R.T.: 3.740 min
 Delta R.T.: -0.003 min
 Response: 79453211
 Conc: 47.73 ng/ml



#7 delta-BHC

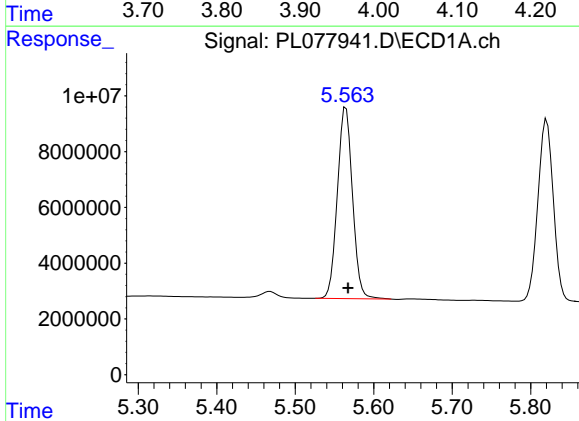
R.T.: 4.672 min
 Delta R.T.: -0.001 min
 Response: 103820679
 Conc: 50.57 ng/ml

Instrument :
 ECD_L
 ClientSampleId :
 PSTDCCC050



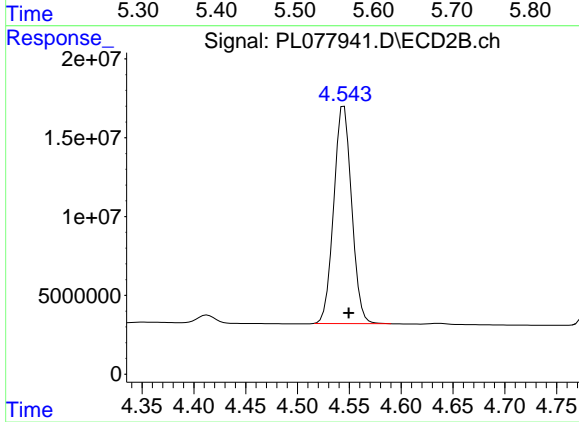
#7 delta-BHC

R.T.: 3.963 min
 Delta R.T.: -0.004 min
 Response: 200131352
 Conc: 49.32 ng/ml



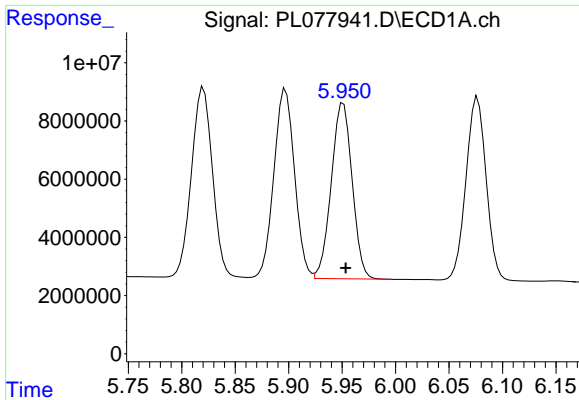
#8 Heptachlor epoxide

R.T.: 5.565 min
 Delta R.T.: -0.003 min
 Response: 91909822
 Conc: 52.72 ng/ml



#8 Heptachlor epoxide

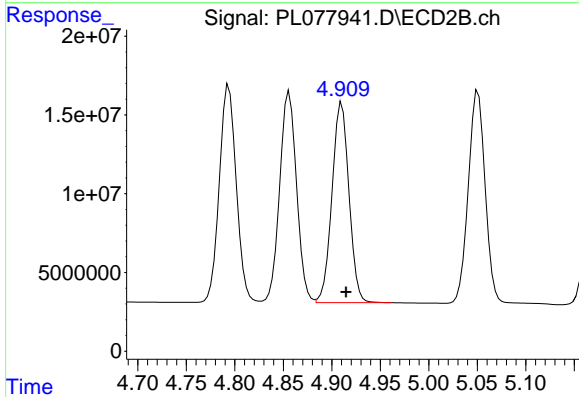
R.T.: 4.545 min
 Delta R.T.: -0.005 min
 Response: 165635663
 Conc: 48.98 ng/ml



#9 Endosulfan I

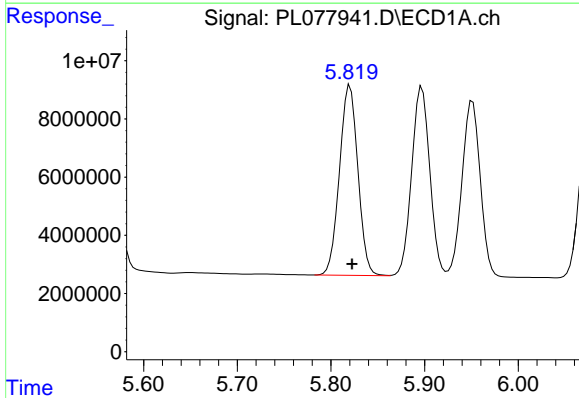
R.T.: 5.951 min
 Delta R.T.: -0.002 min
 Response: 82066364
 Conc: 50.92 ng/ml

Instrument :
 ECD_L
 ClientSampleId :
 PSTDCCC050



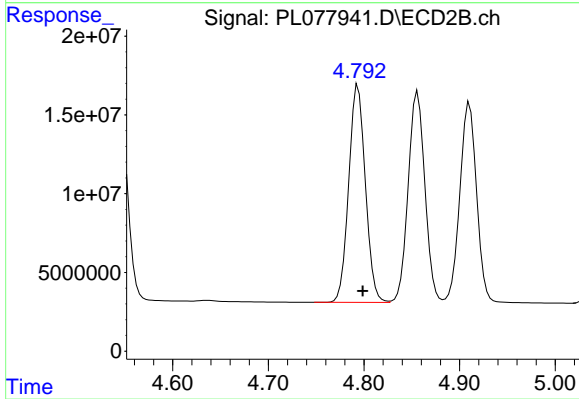
#9 Endosulfan I

R.T.: 4.910 min
 Delta R.T.: -0.004 min
 Response: 154345665
 Conc: 48.92 ng/ml



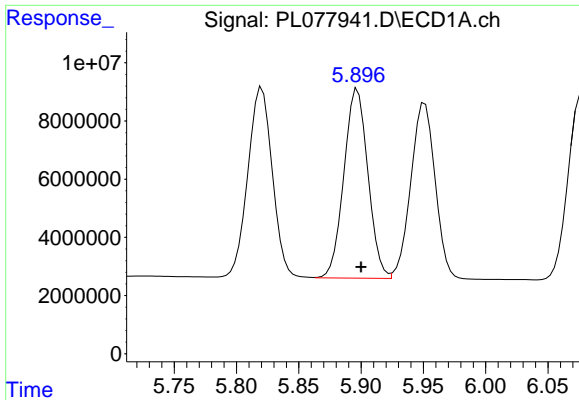
#10 gamma-Chlordane

R.T.: 5.820 min
 Delta R.T.: -0.002 min
 Response: 89520001
 Conc: 51.13 ng/ml



#10 gamma-Chlordane

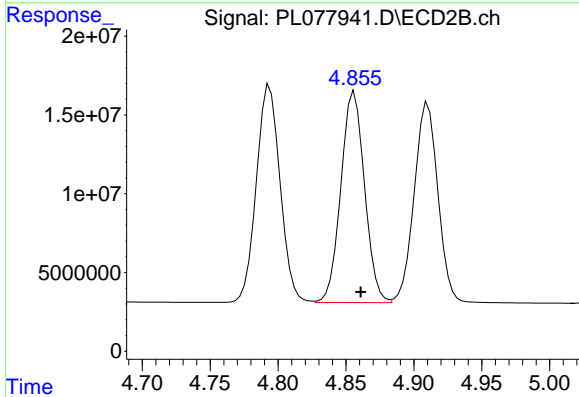
R.T.: 4.794 min
 Delta R.T.: -0.005 min
 Response: 167841881
 Conc: 49.24 ng/ml



#11 alpha-Chlordane

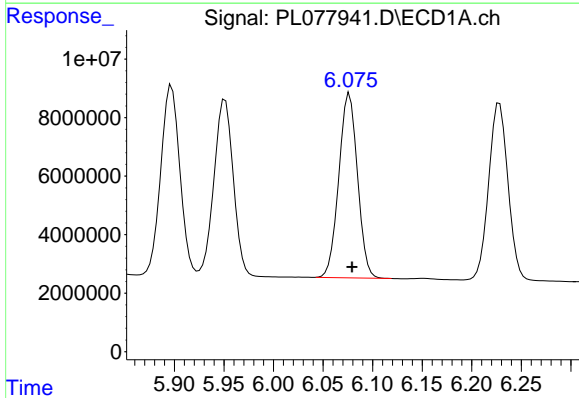
R.T.: 5.897 min
 Delta R.T.: -0.003 min
 Response: 87708816
 Conc: 50.78 ng/ml

Instrument :
 ECD_L
 ClientSampleId :
 PSTDCCC050



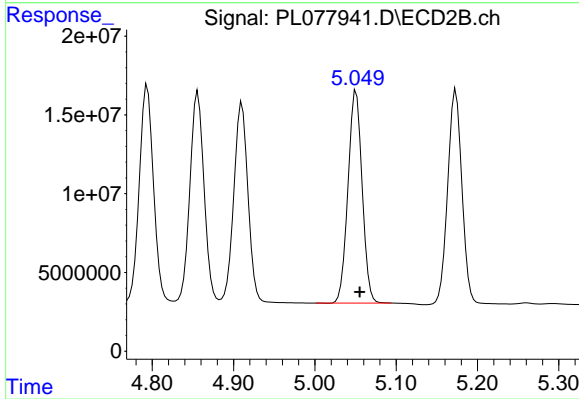
#11 alpha-Chlordane

R.T.: 4.856 min
 Delta R.T.: -0.005 min
 Response: 162539593
 Conc: 49.08 ng/ml



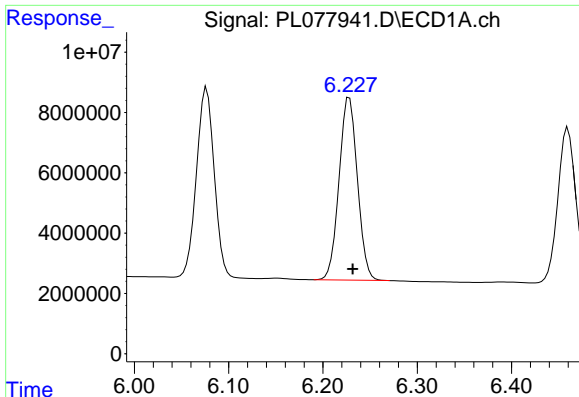
#12 4,4'-DDE

R.T.: 6.077 min
 Delta R.T.: -0.003 min
 Response: 82689655
 Conc: 51.95 ng/ml



#12 4,4'-DDE

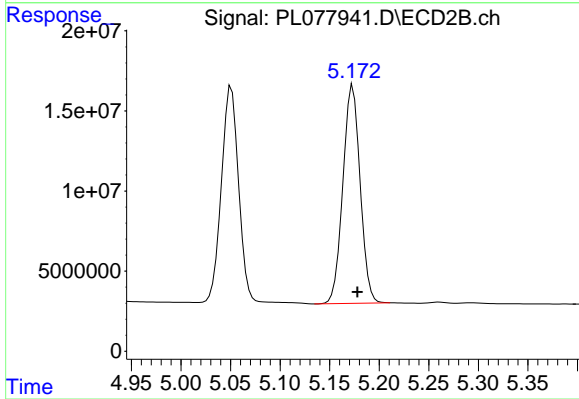
R.T.: 5.051 min
 Delta R.T.: -0.004 min
 Response: 162344280
 Conc: 49.89 ng/ml



#13 Dieldrin

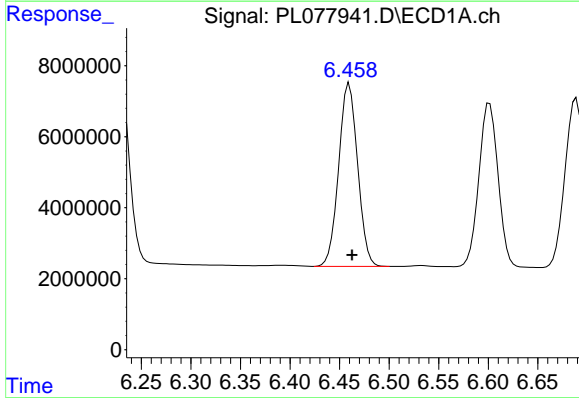
R.T.: 6.228 min
 Delta R.T.: -0.004 min
 Response: 82066191
 Conc: 50.85 ng/ml

Instrument :
 ECD_L
 ClientSampleId :
 PSTDCCC050



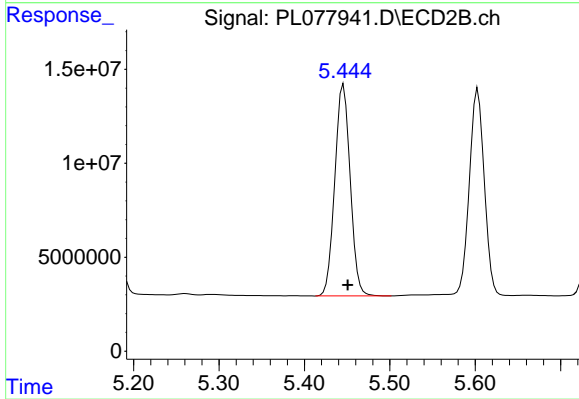
#13 Dieldrin

R.T.: 5.173 min
 Delta R.T.: -0.005 min
 Response: 165121367
 Conc: 49.80 ng/ml



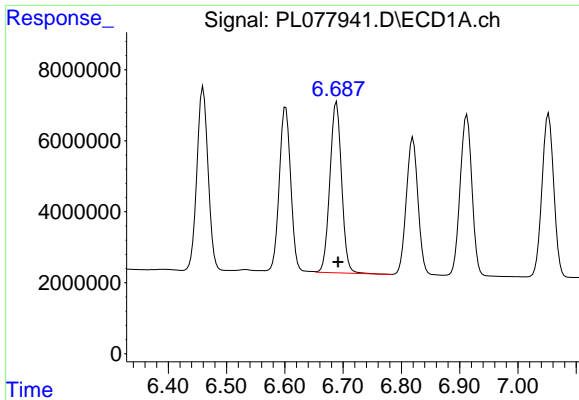
#14 Endrin

R.T.: 6.460 min
 Delta R.T.: -0.003 min
 Response: 68613067
 Conc: 49.61 ng/ml



#14 Endrin

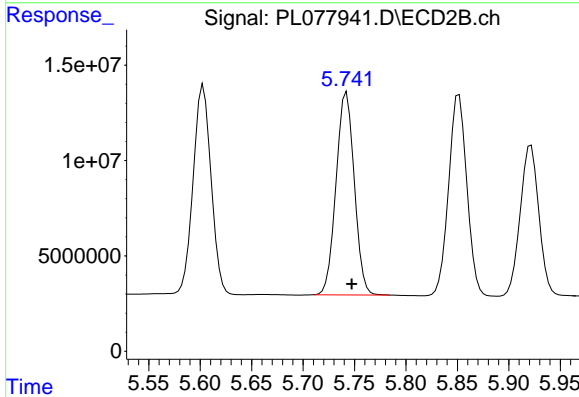
R.T.: 5.446 min
 Delta R.T.: -0.005 min
 Response: 141042948
 Conc: 49.46 ng/ml



#15 Endosulfan II

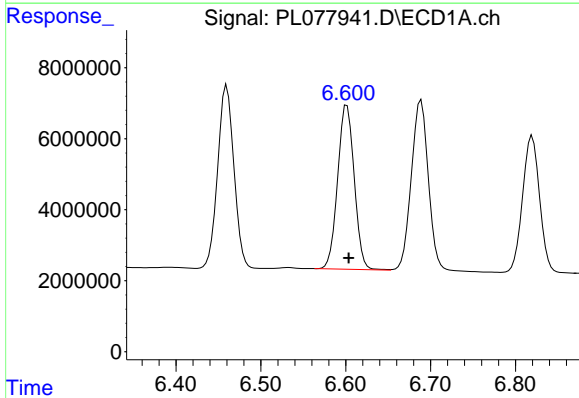
R.T.: 6.689 min
 Delta R.T.: -0.002 min
 Response: 67362168
 Conc: 48.76 ng/ml

Instrument :
 ECD_L
 ClientSampleId :
 PSTDCCC050



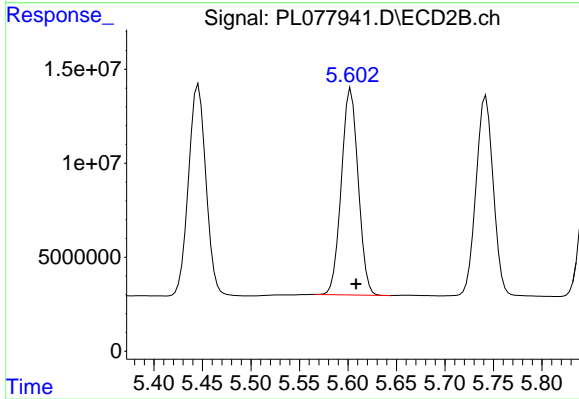
#15 Endosulfan II

R.T.: 5.742 min
 Delta R.T.: -0.005 min
 Response: 130955491
 Conc: 49.70 ng/ml



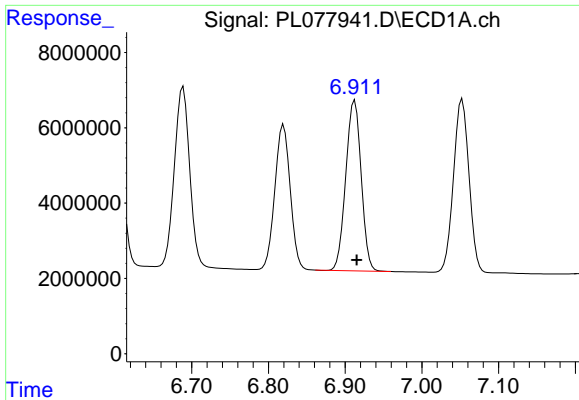
#16 4,4'-DDD

R.T.: 6.601 min
 Delta R.T.: -0.002 min
 Response: 62779076
 Conc: 53.62 ng/ml



#16 4,4'-DDD

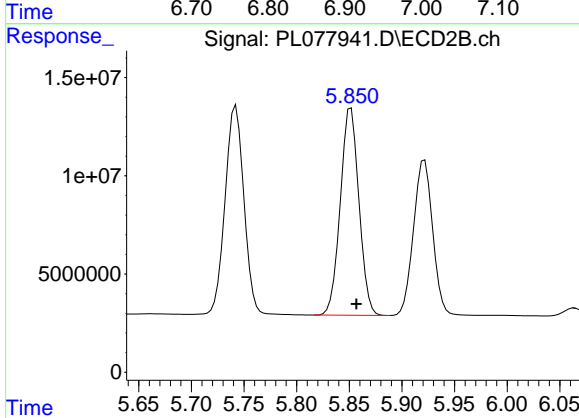
R.T.: 5.603 min
 Delta R.T.: -0.005 min
 Response: 132783544
 Conc: 51.26 ng/ml



#17 4,4'-DDT

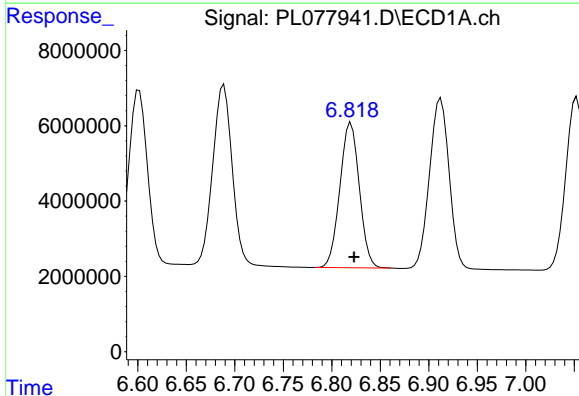
R.T.: 6.913 min
 Delta R.T.: -0.003 min
 Response: 63605202
 Conc: 50.20 ng/ml

Instrument :
 ECD_L
 ClientSampleId :
 PSTDCCC050



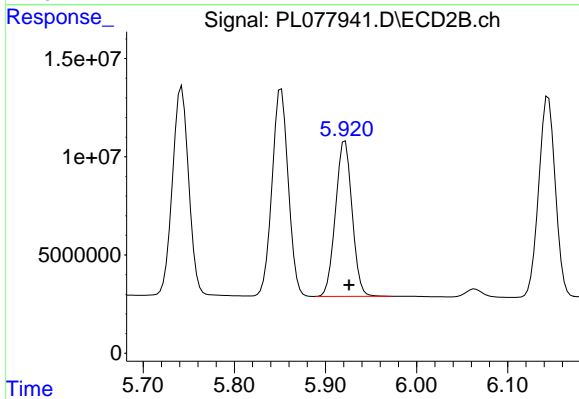
#17 4,4'-DDT

R.T.: 5.852 min
 Delta R.T.: -0.005 min
 Response: 130420060
 Conc: 49.50 ng/ml



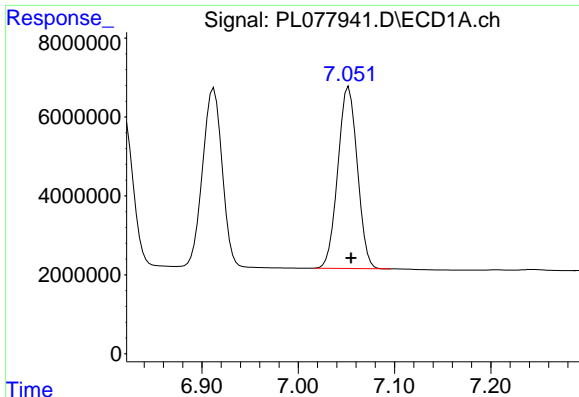
#18 Endrin aldehyde

R.T.: 6.820 min
 Delta R.T.: -0.003 min
 Response: 53563213
 Conc: 50.65 ng/ml



#18 Endrin aldehyde

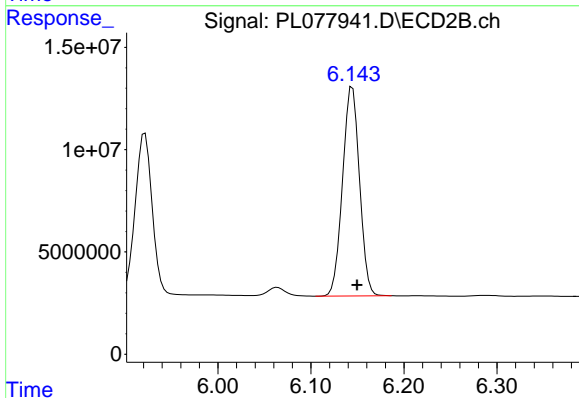
R.T.: 5.922 min
 Delta R.T.: -0.005 min
 Response: 100142803
 Conc: 48.53 ng/ml



#19 Endosulfan Sulfate

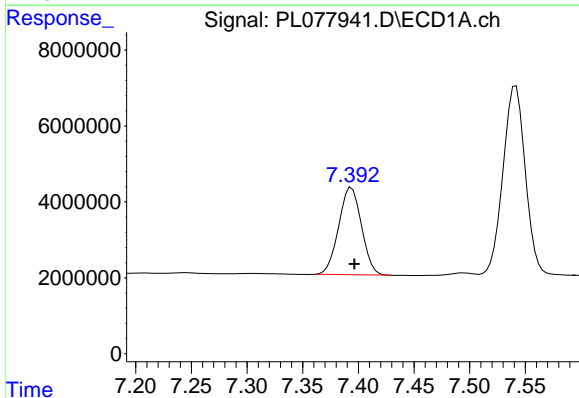
R.T.: 7.053 min
 Delta R.T.: -0.002 min
 Response: 64659145
 Conc: 50.49 ng/ml

Instrument :
 ECD_L
 ClientSampleId :
 PSTDCCC050



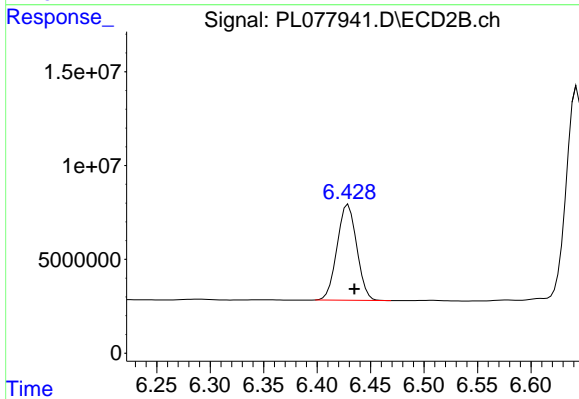
#19 Endosulfan Sulfate

R.T.: 6.145 min
 Delta R.T.: -0.005 min
 Response: 129517329
 Conc: 48.16 ng/ml



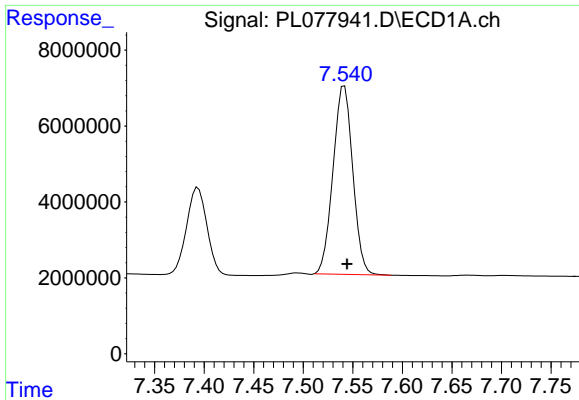
#20 Methoxychlor

R.T.: 7.394 min
 Delta R.T.: -0.003 min
 Response: 32756866
 Conc: 49.60 ng/ml



#20 Methoxychlor

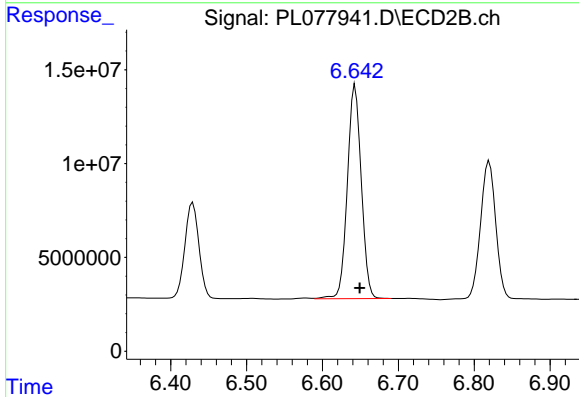
R.T.: 6.429 min
 Delta R.T.: -0.006 min
 Response: 65433907
 Conc: 47.78 ng/ml



#21 Endrin ketone

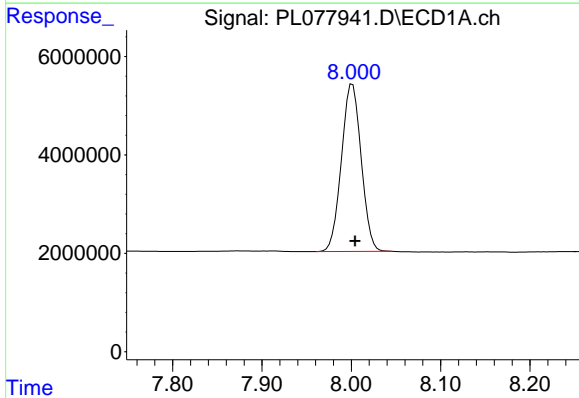
R.T.: 7.542 min
 Delta R.T.: -0.003 min
 Response: 68621221
 Conc: 49.66 ng/ml

Instrument :
 ECD_L
 ClientSampleId :
 PSTDCCC050



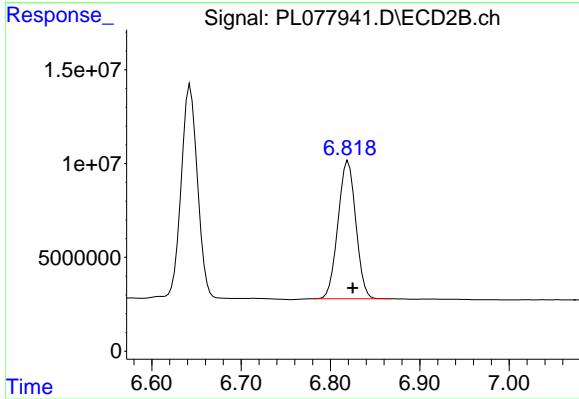
#21 Endrin ketone

R.T.: 6.643 min
 Delta R.T.: -0.006 min
 Response: 145371800
 Conc: 48.00 ng/ml



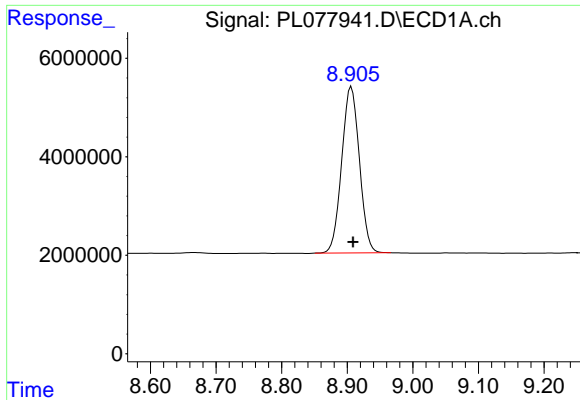
#22 Mirex

R.T.: 8.001 min
 Delta R.T.: -0.003 min
 Response: 52253724
 Conc: 49.77 ng/ml



#22 Mirex

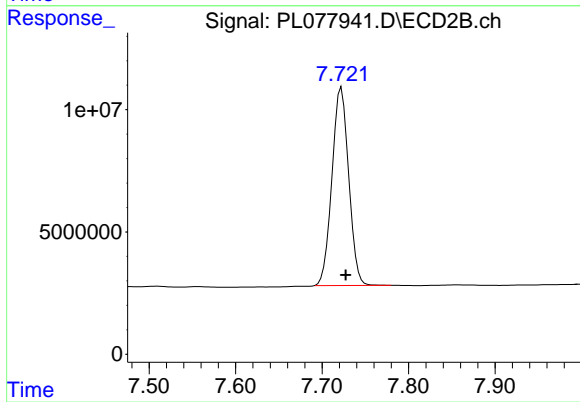
R.T.: 6.820 min
 Delta R.T.: -0.005 min
 Response: 101772996
 Conc: 47.34 ng/ml



#28 Decachlorobiphenyl

R.T.: 8.906 min
Delta R.T.: -0.002 min
Response: 63318617
Conc: 48.99 ng/ml

Instrument :
ECD_L
ClientSampleId :
PSTDCCC050



#28 Decachlorobiphenyl

R.T.: 7.722 min
Delta R.T.: -0.005 min
Response: 108617561
Conc: 43.27 ng/ml