

Data Path : Z:\pestpcbsrv\HPCHEM1\ECD_L\Data\PL092919\
 Data File : PL052813.D
 Signal(s) : Signal #1: ECD1A.ch Signal #2: ECD2B.ch
 Acq On : 27 Sep 2019 22:15
 Operator : SG\AJ
 Sample : RESCHK
 Misc :
 ALS Vial : 22 Sample Multiplier: 1

Instrument :
 ECD_L
 ClientSampleId :

Integration File signal 1: autoint1.e
 Integration File signal 2: autoint2.e
 Quant Time: Sep 28 06:28:43 2019
 Quant Method : Z:\pestpcbsrv\HPCHEM1\ECD_L\methods\PL092919.M
 Quant Title : GC Extractables
 QLast Update : Sat Sep 28 05:10:31 2019
 Response via : Initial Calibration
 Integrator: ChemStation

Volume Inj. : 1 µl
 Signal #1 Phase : ZB-MR2 Signal #2 Phase: ZB-MR1
 Signal #1 Info : 30M x 0.32mm x0.2 Signal #2 Info : 30M x 0.32mm x0.5µm

	Compound	RT#1	RT#2	Resp#1	Resp#2	ng/ml	ng/ml

System Monitoring Compounds							
1)	SA Tetrachlo...	3.549	4.048	179.8E6	49483533	18.076	18.428
28)	SA Decachlor...	8.345	9.124	193.4E6	56972215	19.306	19.420
Target Compounds							
7)	B delta-BHC	0.000	5.086f	0	2957109	N.D.	0.817 #
8)	B Heptachlo...	0.000	5.926	0	2310820	N.D.	0.689 #
9)	A Endosulfan I	5.631	6.281	107.6E6	30804033	8.870	9.855
10)	B gamma-Chl...	5.518	6.158	114.5E6	32057368	8.514	9.476
12)	B 4,4'-DDE	5.740	6.387	205.4E6	60972506	17.693	18.668
13)	MA Dieldrin	5.876	6.538	238.3E6	60939450	18.459	18.682
19)	B Endosulfa...	6.790	7.310	183.7E6	48875144	17.647	17.900
20)	A Methoxychlor	7.048	7.631	478.3E6	131.1E6	92.721	93.148
21)	B Endrin ke...	7.283	7.782	181.6E6	45559444	15.582	15.970
25)	Chlordane-3	5.518	6.158	114.5E6	32057368	98.811	73.609 #

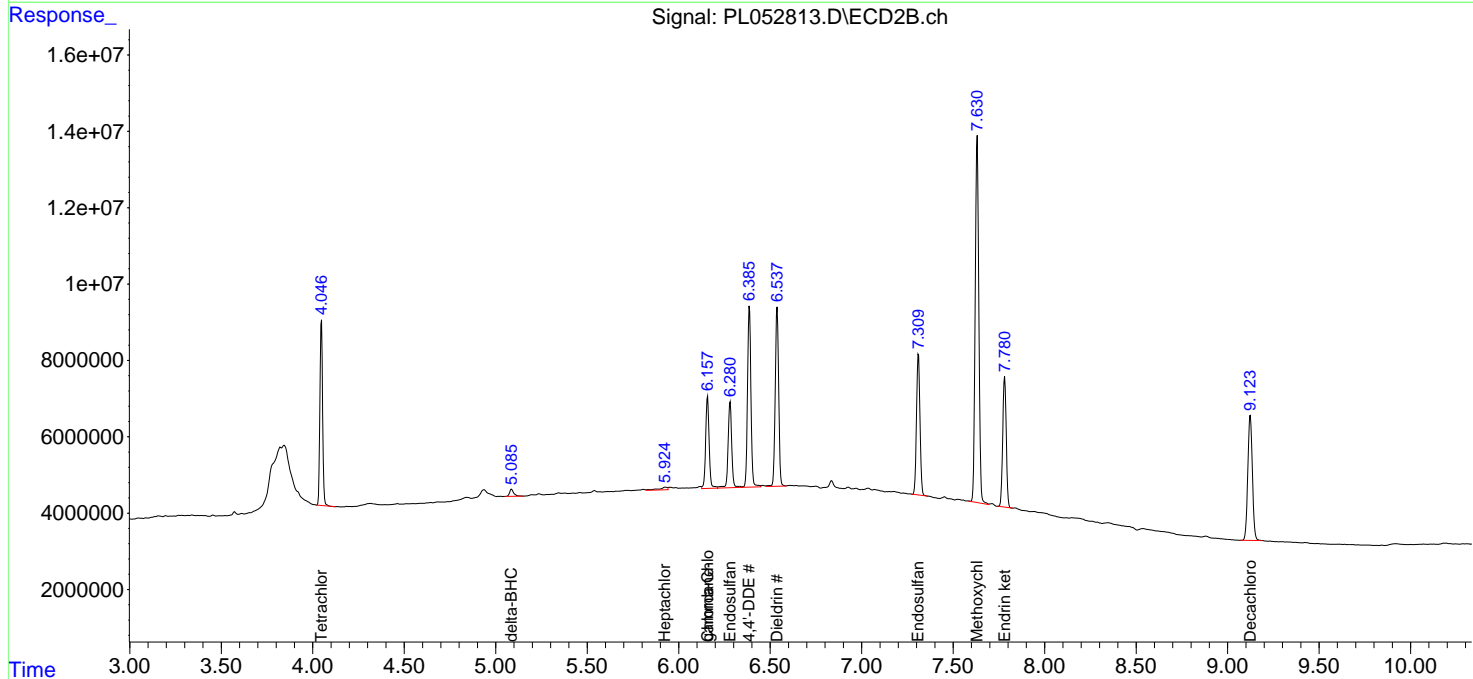
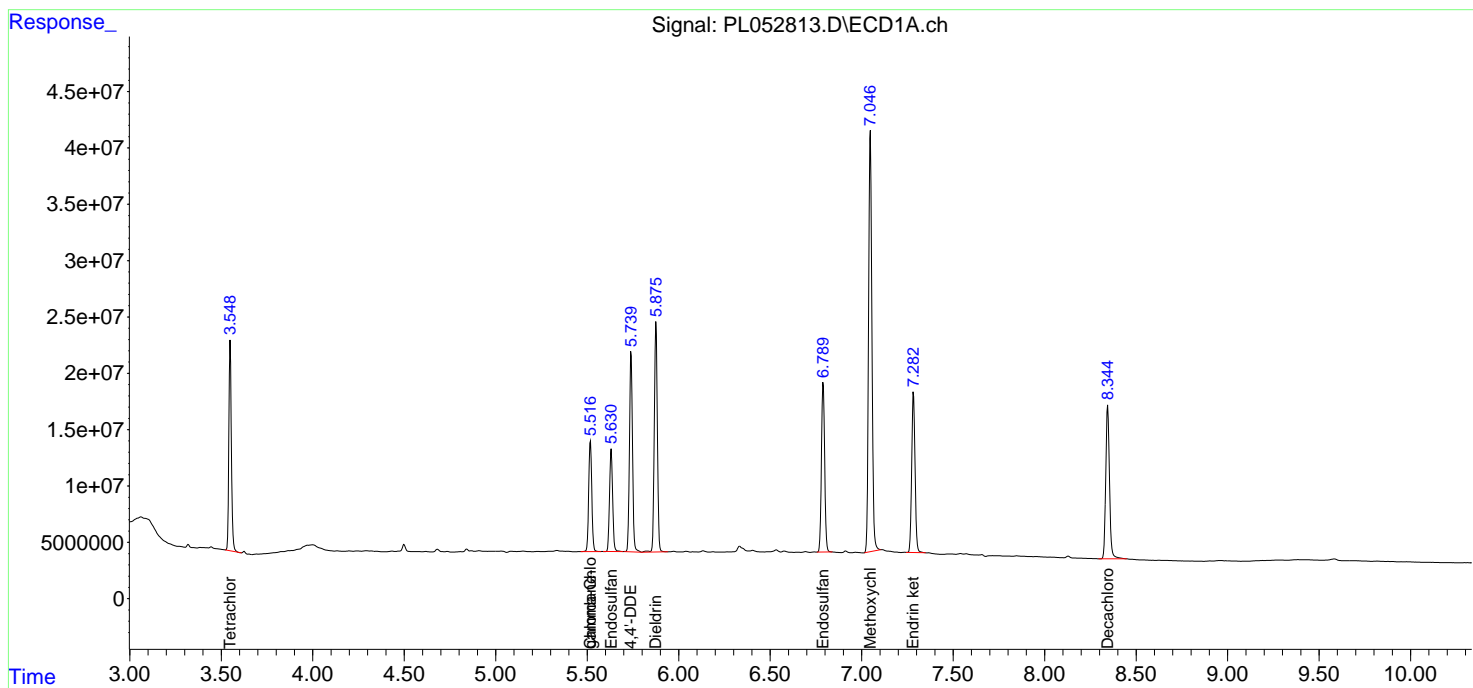
(f)=RT Delta > 1/2 Window (#)=Amounts differ by > 25% (m)=manual int.

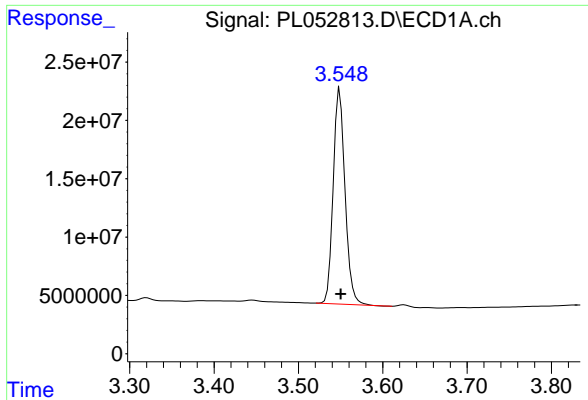
Data Path : Z:\pestpcbsrv\HPCHEM1\ECD_L\Data\PL092919\
 Data File : PL052813.D
 Signal(s) : Signal #1: ECD1A.ch Signal #2: ECD2B.ch
 Acq On : 27 Sep 2019 22:15
 Operator : SG\AJ
 Sample : RESCHK
 Misc :
 ALS Vial : 22 Sample Multiplier: 1

Instrument :
 ECD_L
 ClientSampled :

Integration File signal 1: autoint1.e
 Integration File signal 2: autoint2.e
 Quant Time: Sep 28 06:28:43 2019
 Quant Method : Z:\pestpcbsrv\HPCHEM1\ECD_L\methods\PL092919.M
 Quant Title : GC Extractables
 QLast Update : Sat Sep 28 05:10:31 2019
 Response via : Initial Calibration
 Integrator: ChemStation

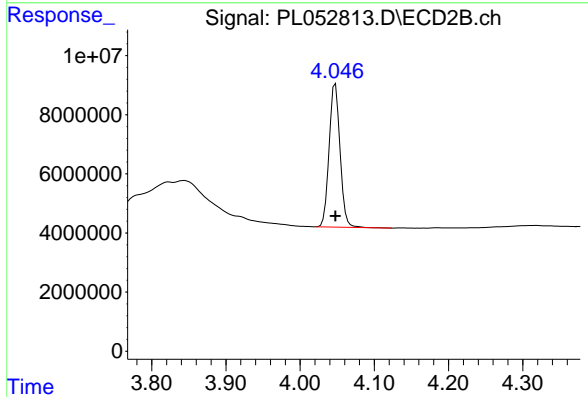
Volume Inj. : 1 µl
 Signal #1 Phase : ZB-MR2 Signal #2 Phase: ZB-MR1
 Signal #1 Info : 30M x 0.32mm x0.2 Signal #2 Info : 30M x 0.32mm x0.5µm



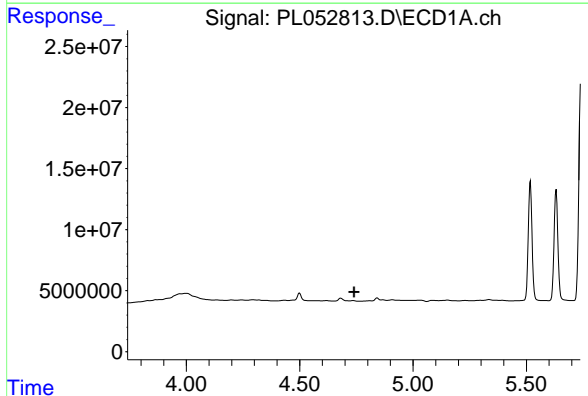


#1 Tetrachloro-m-xylene
 R.T.: 3.549 min
 Delta R.T.: 0.000 min
 Response: 179797215
 Conc: 18.08 ng/ml

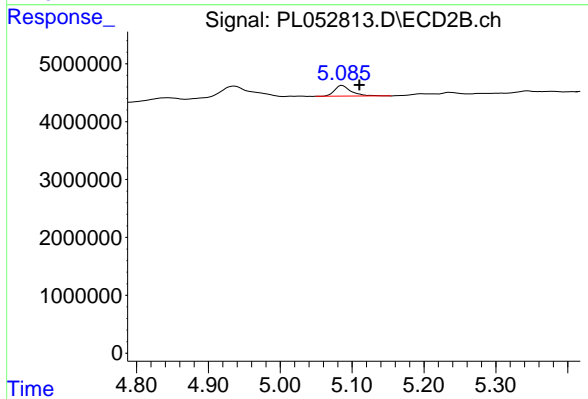
Instrument :
 ECD_L
 ClientSampleId :



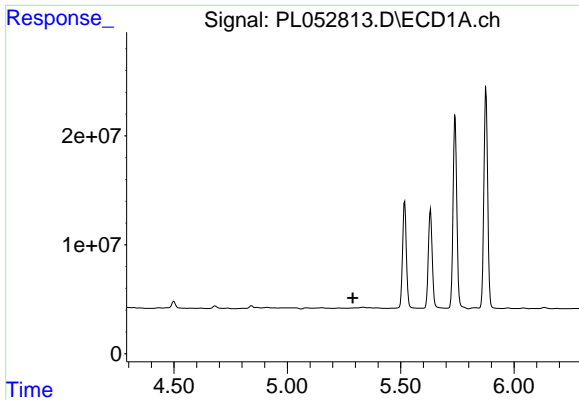
#1 Tetrachloro-m-xylene
 R.T.: 4.048 min
 Delta R.T.: 0.000 min
 Response: 49483533
 Conc: 18.43 ng/ml



#7 delta-BHC
 R.T.: 0.000 min
 Exp R.T. : 4.740 min
 Response: 0
 Conc: N.D.



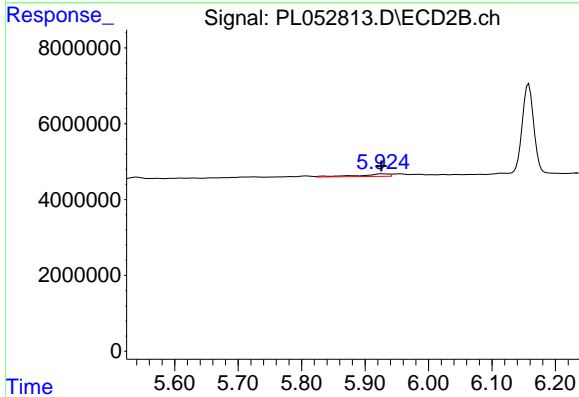
#7 delta-BHC
 R.T.: 5.086 min
 Delta R.T.: -0.024 min
 Response: 2957109
 Conc: 0.82 ng/ml



#8 Heptachlor epoxide

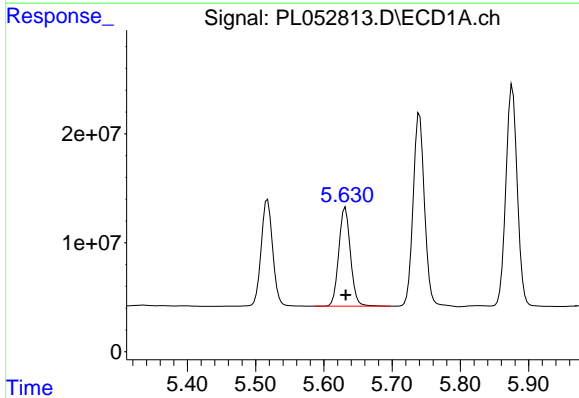
R.T.: 0.000 min
 Exp R.T.: 5.289 min
 Response: 0
 Conc: N.D.

Instrument :
 ECD_L
 ClientSampleId :



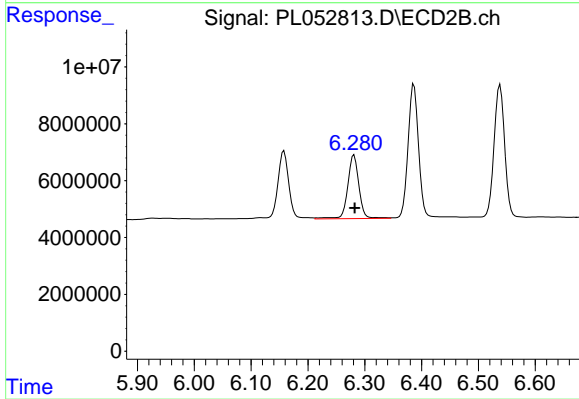
#8 Heptachlor epoxide

R.T.: 5.926 min
 Delta R.T.: 0.000 min
 Response: 2310820
 Conc: 0.69 ng/ml



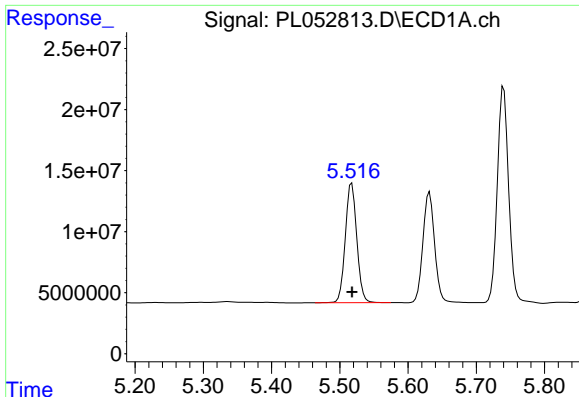
#9 Endosulfan I

R.T.: 5.631 min
 Delta R.T.: 0.000 min
 Response: 107647956
 Conc: 8.87 ng/ml



#9 Endosulfan I

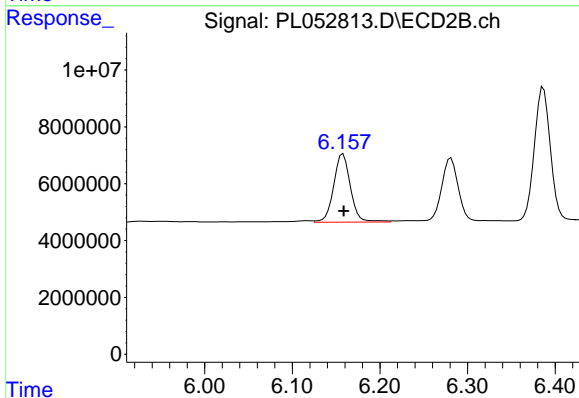
R.T.: 6.281 min
 Delta R.T.: 0.000 min
 Response: 30804033
 Conc: 9.86 ng/ml



#10 gamma-Chlordane

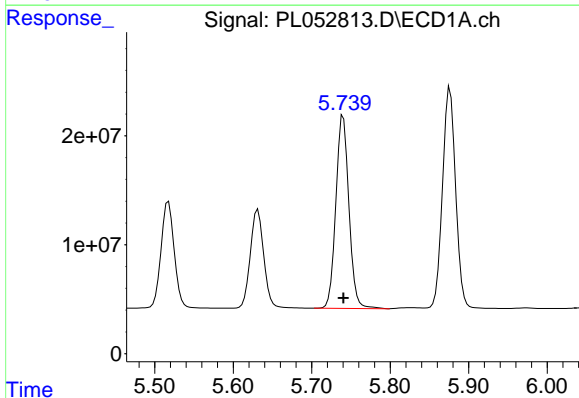
R.T.: 5.518 min
 Delta R.T.: 0.000 min
 Response: 114491908
 Conc: 8.51 ng/ml

Instrument :
 ECD_L
 ClientSampleId :



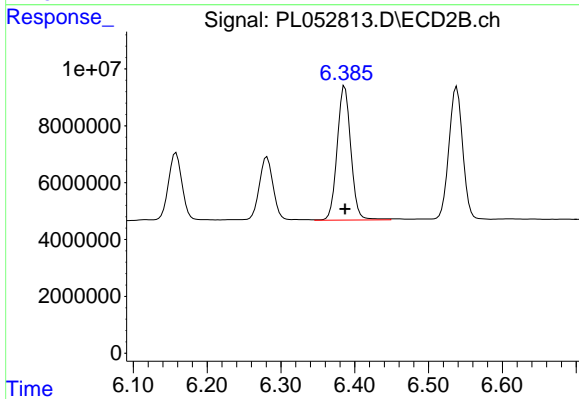
#10 gamma-Chlordane

R.T.: 6.158 min
 Delta R.T.: 0.000 min
 Response: 32057368
 Conc: 9.48 ng/ml



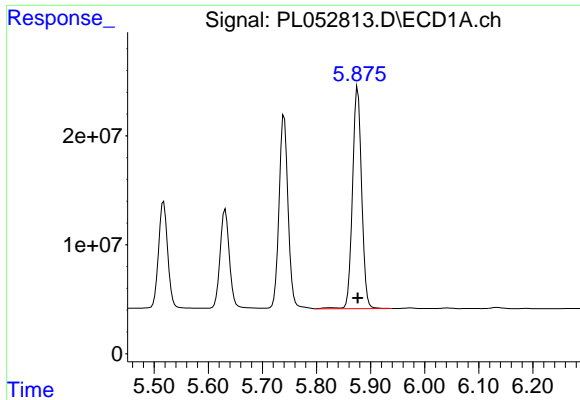
#12 4,4'-DDE

R.T.: 5.740 min
 Delta R.T.: 0.000 min
 Response: 205355753
 Conc: 17.69 ng/ml



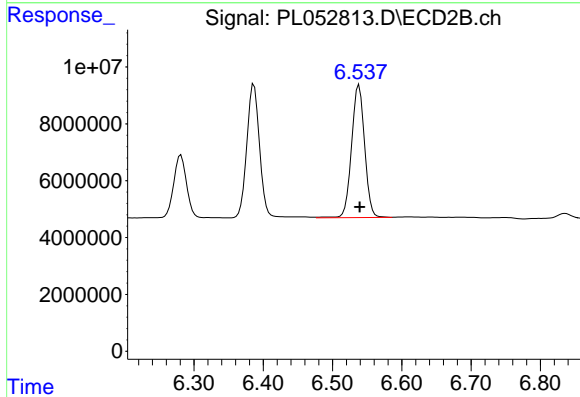
#12 4,4'-DDE

R.T.: 6.387 min
 Delta R.T.: 0.000 min
 Response: 60972506
 Conc: 18.67 ng/ml

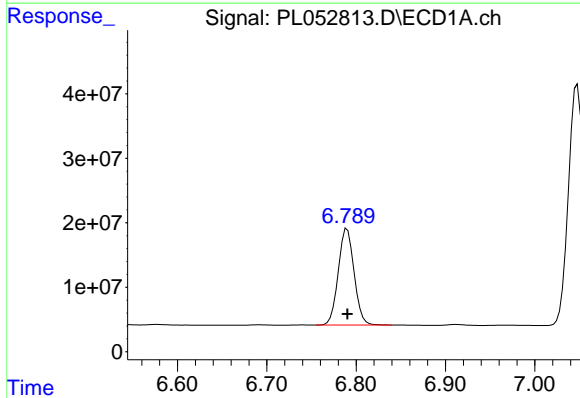


#13 Dieldrin
 R.T.: 5.876 min
 Delta R.T.: 0.000 min
 Response: 238275441
 Conc: 18.46 ng/ml

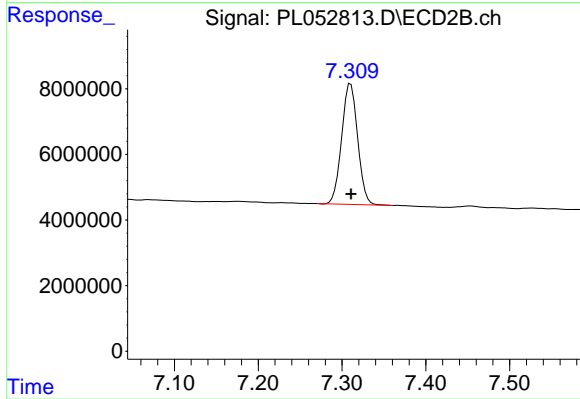
Instrument :
 ECD_L
 ClientSampled :



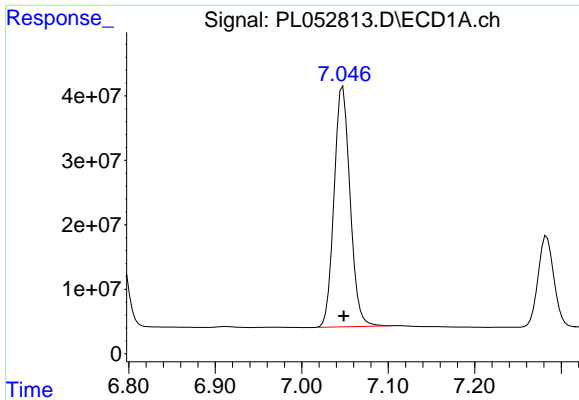
#13 Dieldrin
 R.T.: 6.538 min
 Delta R.T.: -0.001 min
 Response: 60939450
 Conc: 18.68 ng/ml



#19 Endosulfan Sulfate
 R.T.: 6.790 min
 Delta R.T.: 0.000 min
 Response: 183691650
 Conc: 17.65 ng/ml

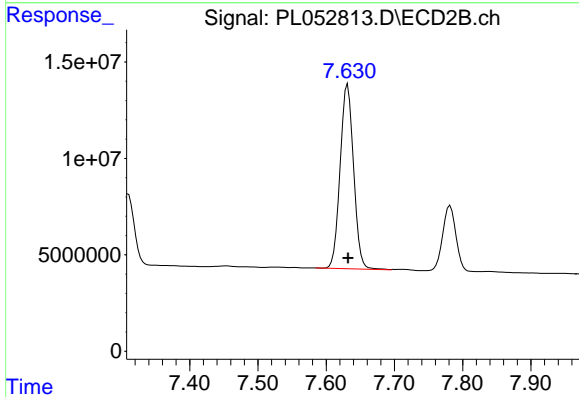


#19 Endosulfan Sulfate
 R.T.: 7.310 min
 Delta R.T.: 0.000 min
 Response: 48875144
 Conc: 17.90 ng/ml

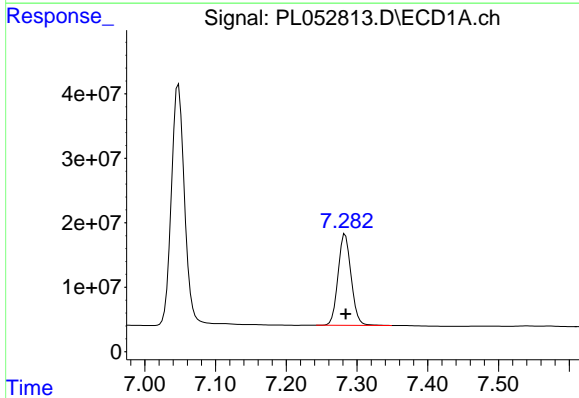


#20 Methoxychlor
 R.T.: 7.048 min
 Delta R.T.: 0.000 min
 Response: 478269920
 Conc: 92.72 ng/ml

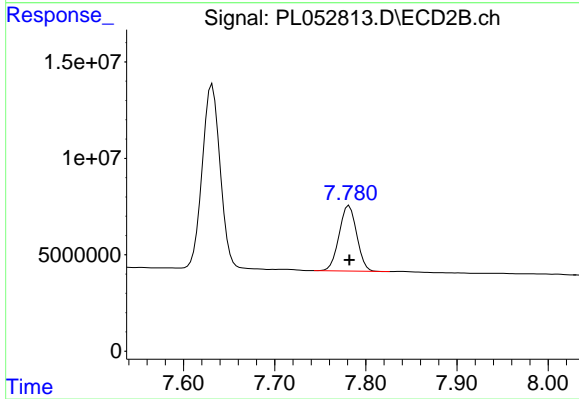
Instrument :
 ECD_L
 ClientSampled :



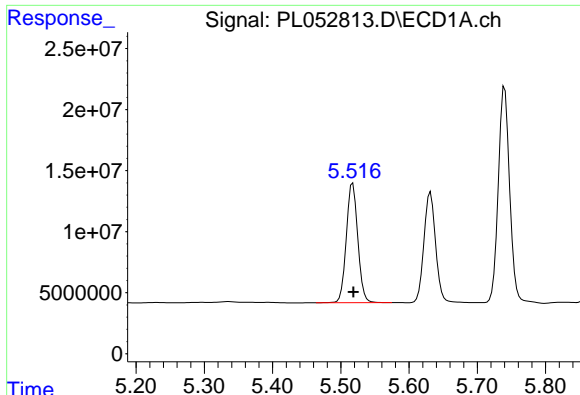
#20 Methoxychlor
 R.T.: 7.631 min
 Delta R.T.: 0.000 min
 Response: 131145525
 Conc: 93.15 ng/ml



#21 Endrin ketone
 R.T.: 7.283 min
 Delta R.T.: 0.000 min
 Response: 181603518
 Conc: 15.58 ng/ml

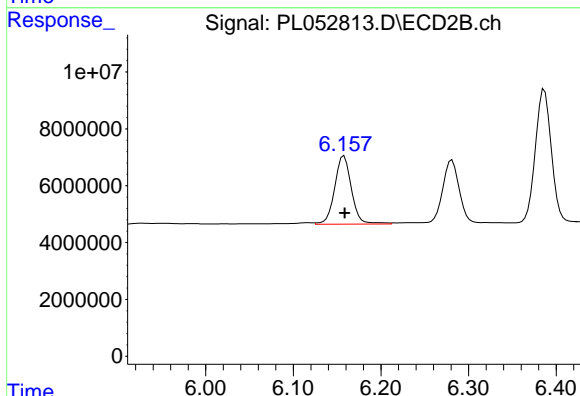


#21 Endrin ketone
 R.T.: 7.782 min
 Delta R.T.: 0.000 min
 Response: 45559444
 Conc: 15.97 ng/ml

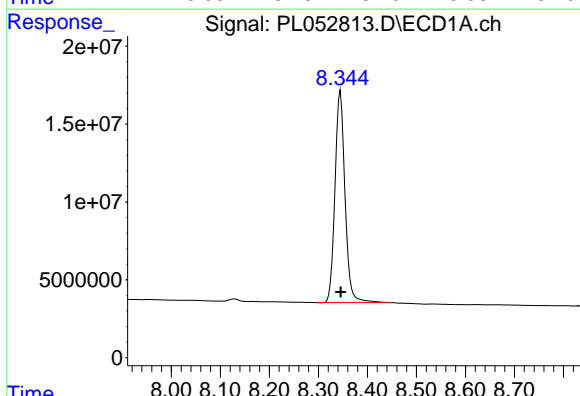


#25 Chlordane-3
 R.T.: 5.518 min
 Delta R.T.: 0.000 min
 Response: 114491908
 Conc: 98.81 ng/ml

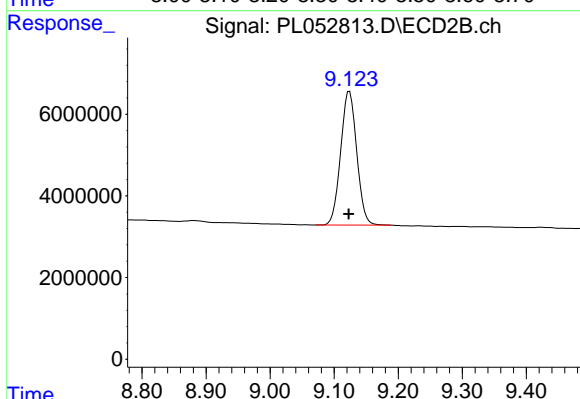
Instrument :
 ECD_L
 ClientSampleId :



#25 Chlordane-3
 R.T.: 6.158 min
 Delta R.T.: 0.000 min
 Response: 32057368
 Conc: 73.61 ng/ml



#28 Decachlorobiphenyl
 R.T.: 8.345 min
 Delta R.T.: 0.000 min
 Response: 193367066
 Conc: 19.31 ng/ml



#28 Decachlorobiphenyl
 R.T.: 9.124 min
 Delta R.T.: 0.001 min
 Response: 56972215
 Conc: 19.42 ng/ml