

Data Path : Z:\pestpcbsrv\HPCHEM1\ECD_L\Data\PL092919\
 Data File : PL052820.D
 Signal(s) : Signal #1: ECD1A.ch Signal #2: ECD2B.ch
 Acq On : 27 Sep 2019 23:53
 Operator : SG\AJ
 Sample : PCHLORICC750
 Misc :
 ALS Vial : 29 Sample Multiplier: 1

Instrument :
 ECD_L
 ClientSampleId :

Integration File signal 1: autoint1.e
 Integration File signal 2: autoint2.e
 Quant Time: Sep 28 04:48:13 2019
 Quant Method : Z:\pestpcbsrv\HPCHEM1\ECD_L\methods\PL092919.M
 Quant Title : GC Extractables
 QLast Update : Sat Sep 28 04:45:56 2019
 Response via : Initial Calibration
 Integrator: ChemStation

Volume Inj. : 1 µl
 Signal #1 Phase : ZB-MR2 Signal #2 Phase: ZB-MR1
 Signal #1 Info : 30M x 0.32mm x0.2 Signal #2 Info : 30M x 0.32mm x0.5µm

Compound	RT#1	RT#2	Resp#1	Resp#2	ng/ml	ng/ml

System Monitoring Compounds						
1) SA Tetrachlo...	3.549	4.048	898.1E6	189.7E6	74.238	73.451
28) SA Decachlor...	8.346	9.124	699.4E6	200.4E6	73.685	72.333
Target Compounds						
23) Chlordane-1	4.436	5.045	261.5E6	73667245	753.166	748.474
24) Chlordane-2	4.942	5.513	288.0E6	82110003	730.658	781.578
25) Chlordane-3	5.518	6.159	899.0E6	321.3E6	759.196	758.203
26) Chlordane-4	5.577	6.233	744.3E6	387.1E6	748.871	763.159
27) Chlordane-5	6.419	7.038	296.6E6	62127539	757.679	732.833

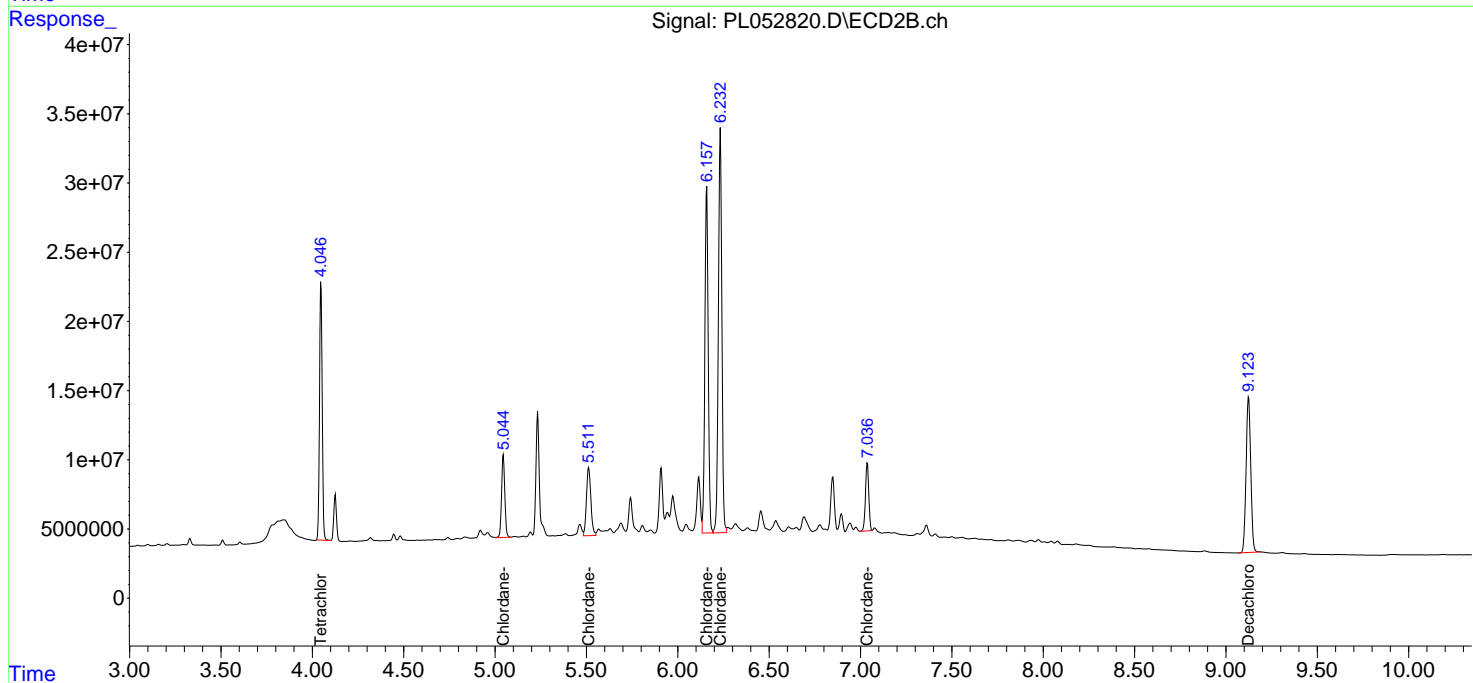
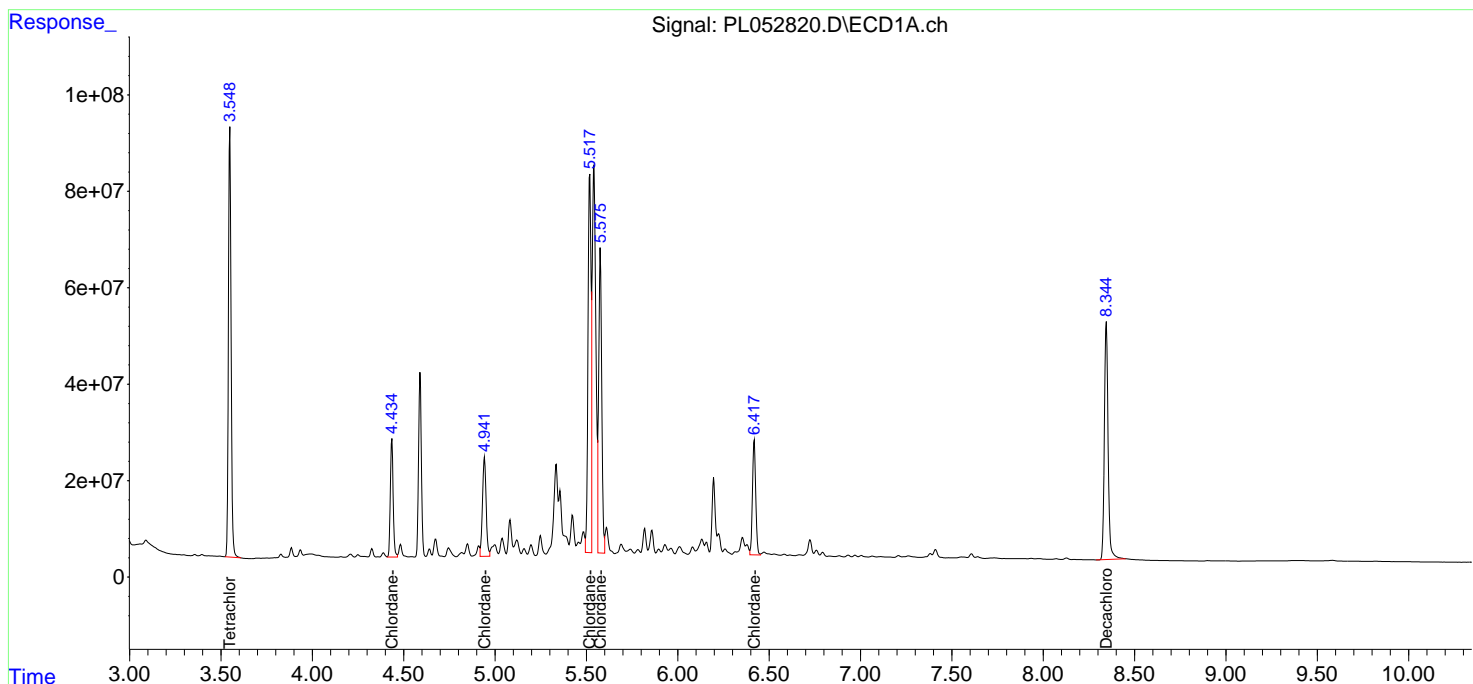
(f)=RT Delta > 1/2 Window (#)=Amounts differ by > 25% (m)=manual int.

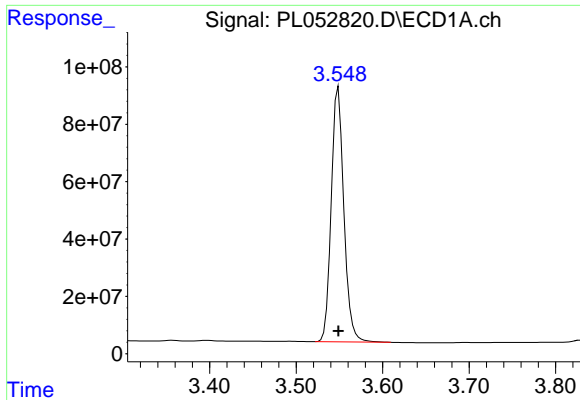
Data Path : Z:\pestpcbsrv\HPCHEM1\ECD_L\Data\PL092919\
 Data File : PL052820.D
 Signal(s) : Signal #1: ECD1A.ch Signal #2: ECD2B.ch
 Acq On : 27 Sep 2019 23:53
 Operator : SG\AJ
 Sample : PCHLORICC750
 Misc :
 ALS Vial : 29 Sample Multiplier: 1

Instrument :
 ECD_L
 ClientSampleId :

Integration File signal 1: autoint1.e
 Integration File signal 2: autoint2.e
 Quant Time: Sep 28 04:48:13 2019
 Quant Method : Z:\pestpcbsrv\HPCHEM1\ECD_L\methods\PL092919.M
 Quant Title : GC Extractables
 QLast Update : Sat Sep 28 04:45:56 2019
 Response via : Initial Calibration
 Integrator: ChemStation

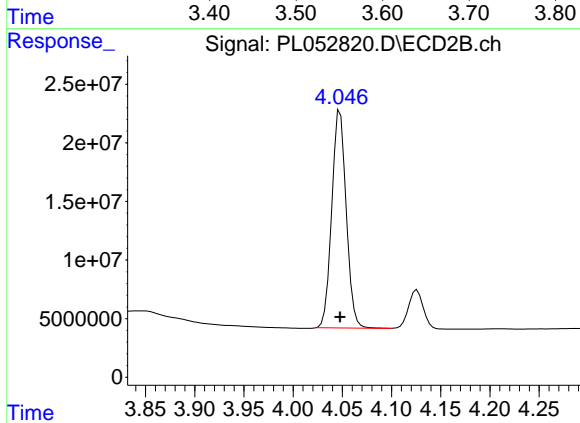
Volume Inj. : 1 µl
 Signal #1 Phase : ZB-MR2 Signal #2 Phase: ZB-MR1
 Signal #1 Info : 30M x 0.32mm x0.2 Signal #2 Info : 30M x 0.32mm x0.5µm



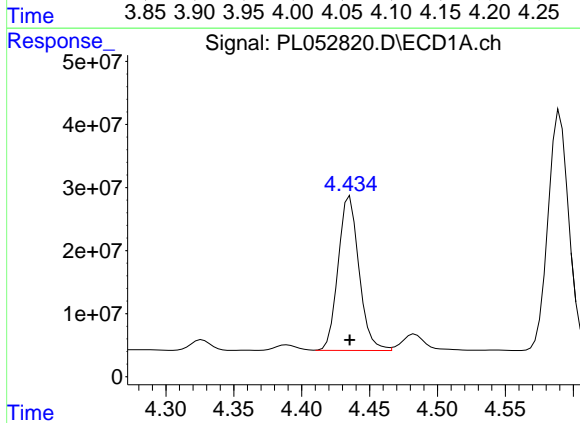


#1 Tetrachloro-m-xylene
 R.T.: 3.549 min
 Delta R.T.: 0.000 min
 Response: 898111700
 Conc: 74.24 ng/ml

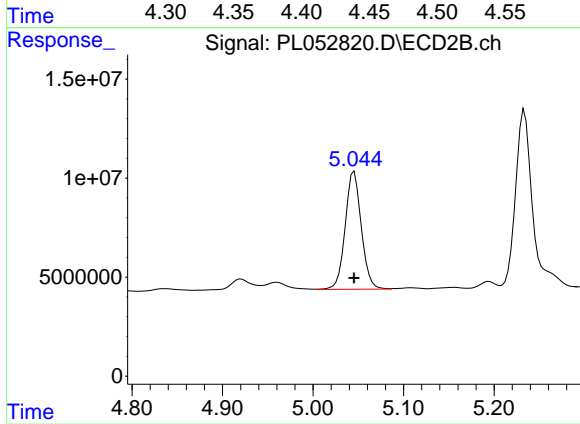
Instrument :
 ECD_L
 ClientSampleId :



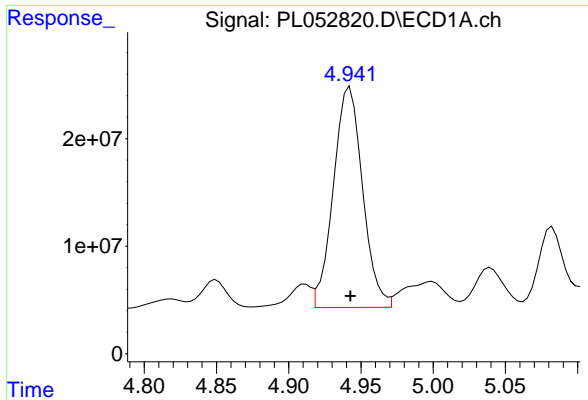
#1 Tetrachloro-m-xylene
 R.T.: 4.048 min
 Delta R.T.: 0.000 min
 Response: 189724310
 Conc: 73.45 ng/ml



#23 Chlordane-1
 R.T.: 4.436 min
 Delta R.T.: 0.000 min
 Response: 261456262
 Conc: 753.17 ng/ml

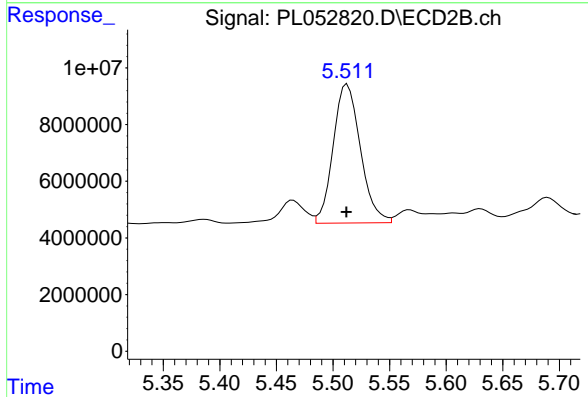


#23 Chlordane-1
 R.T.: 5.045 min
 Delta R.T.: 0.000 min
 Response: 73667245
 Conc: 748.47 ng/ml

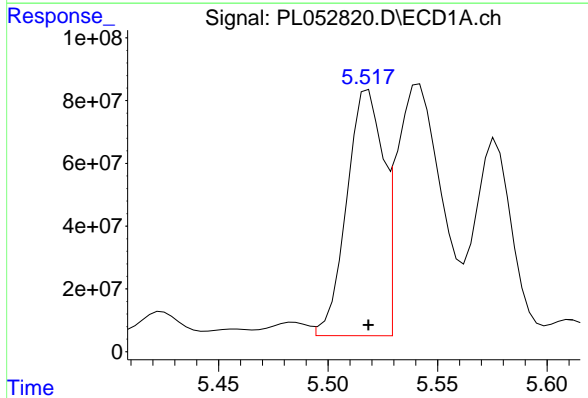


#24 Chlordane-2
 R.T.: 4.942 min
 Delta R.T.: 0.000 min
 Response: 288018620
 Conc: 730.66 ng/ml

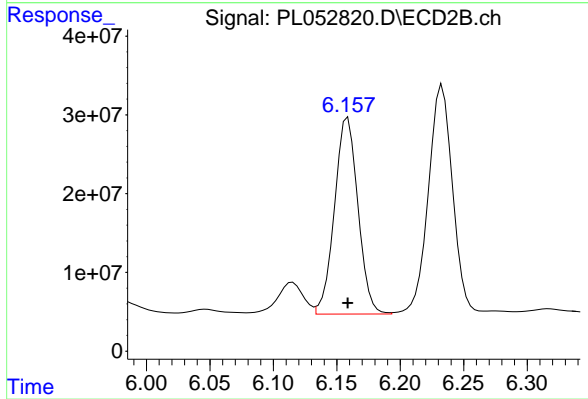
Instrument :
 ECD_L
 ClientSampleId :



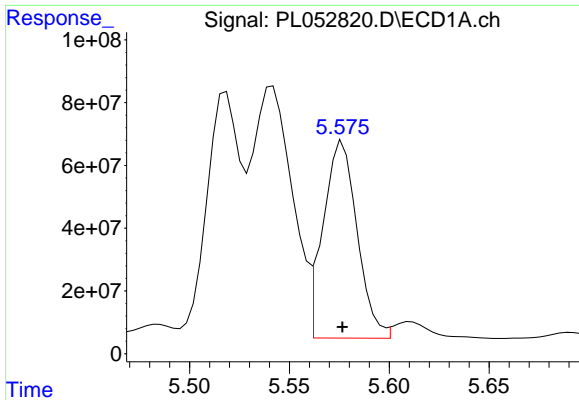
#24 Chlordane-2
 R.T.: 5.513 min
 Delta R.T.: 0.000 min
 Response: 82110003
 Conc: 781.58 ng/ml



#25 Chlordane-3
 R.T.: 5.518 min
 Delta R.T.: 0.000 min
 Response: 899037685
 Conc: 759.20 ng/ml

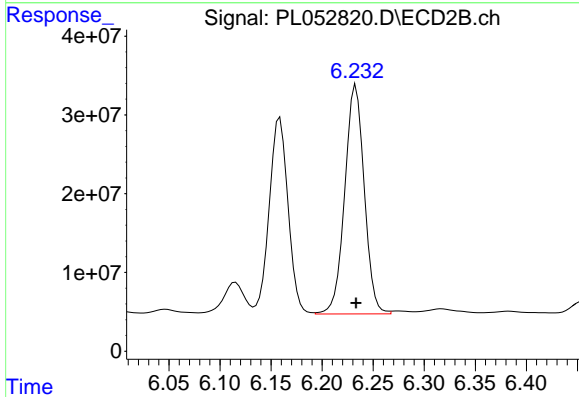


#25 Chlordane-3
 R.T.: 6.159 min
 Delta R.T.: 0.000 min
 Response: 321277976
 Conc: 758.20 ng/ml

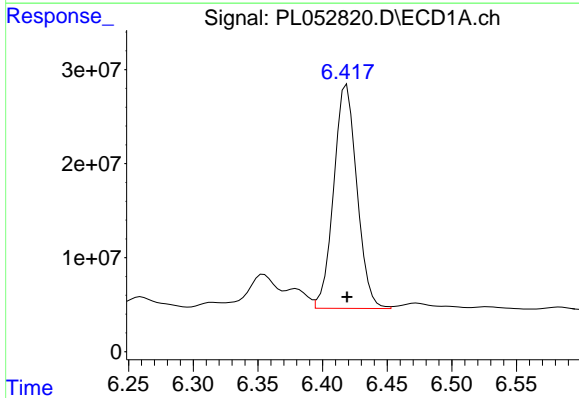


#26 Chlordane-4
 R.T.: 5.577 min
 Delta R.T.: 0.000 min
 Response: 744250692
 Conc: 748.87 ng/ml

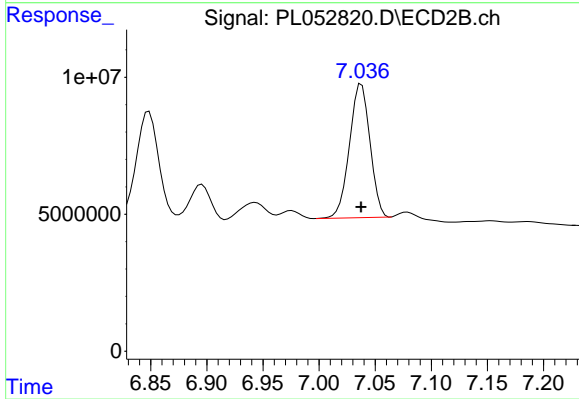
Instrument :
 ECD_L
 ClientSampled :



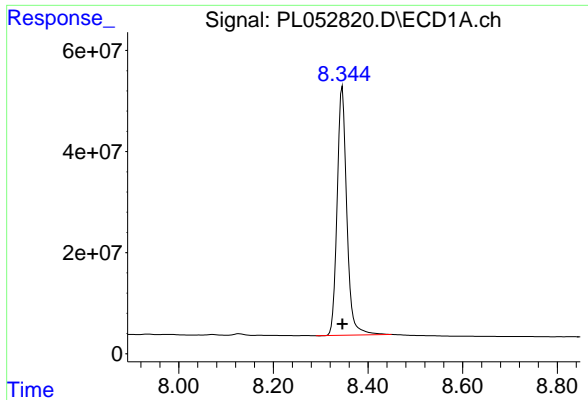
#26 Chlordane-4
 R.T.: 6.233 min
 Delta R.T.: 0.000 min
 Response: 387149687
 Conc: 763.16 ng/ml



#27 Chlordane-5
 R.T.: 6.419 min
 Delta R.T.: 0.000 min
 Response: 296554408
 Conc: 757.68 ng/ml



#27 Chlordane-5
 R.T.: 7.038 min
 Delta R.T.: 0.000 min
 Response: 62127539
 Conc: 732.83 ng/ml



#28 Decachlorobiphenyl

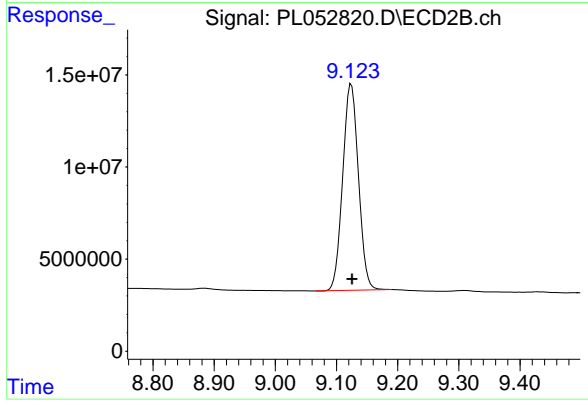
R.T.: 8.346 min

Delta R.T.: 0.000 min

Response: 699384225

Conc: 73.69 ng/ml

Instrument :
ECD_L
ClientSampled :



#28 Decachlorobiphenyl

R.T.: 9.124 min

Delta R.T.: -0.001 min

Response: 200355283

Conc: 72.33 ng/ml