

Data Path : Z:\pestpcbsrv\HPCHEM1\ECD_L\Data\PL100119\
 Data File : PL052961.D
 Signal(s) : Signal #1: ECD1A.ch Signal #2: ECD2B.ch
 Acq On : 01 Oct 2019 18:23
 Operator : SG\AJ
 Sample : K4946-08
 Misc :
 ALS Vial : 26 Sample Multiplier: 1

Instrument :
 ECD_L
 ClientSampleId :
 GP-4_(1-3)

Integration File signal 1: autoint1.e
 Integration File signal 2: autoint2.e
 Quant Time: Oct 02 03:48:07 2019
 Quant Method : Z:\pestpcbsrv\HPCHEM1\ECD_L\methods\PL092919.M
 Quant Title : GC Extractables
 QLast Update : Mon Sep 30 08:44:08 2019
 Response via : Initial Calibration
 Integrator: ChemStation

Volume Inj. : 1 µl
 Signal #1 Phase : ZB-MR2 Signal #2 Phase: ZB-MR1
 Signal #1 Info : 30M x 0.32mm x0.2 Signal #2 Info : 30M x 0.32mm x0.5µm

Compound	RT#1	RT#2	Resp#1	Resp#2	ng/ml	ng/ml

System Monitoring Compounds						
1) SA Tetrachlo...	3.549	4.047	175.3E6	47592957	17.624	17.724
28) SA Decachlor...	8.344	9.125	95244100	31014613	9.509	10.572
Target Compounds						
7) B delta-BHC	0.000	5.084f	0	1265495	N.D.	0.350 #
15) B Endosulfa...	0.000	6.975	0	6032854	N.D.	2.033 #
19) B Endosulfa...	0.000	7.309	0	2640163	N.D.	0.967 #
21) B Endrin ke...	0.000	7.773	0	2809287	N.D.	0.985 #
27) Chlordane-5	0.000	7.032	0	3899529	N.D.	44.208 #

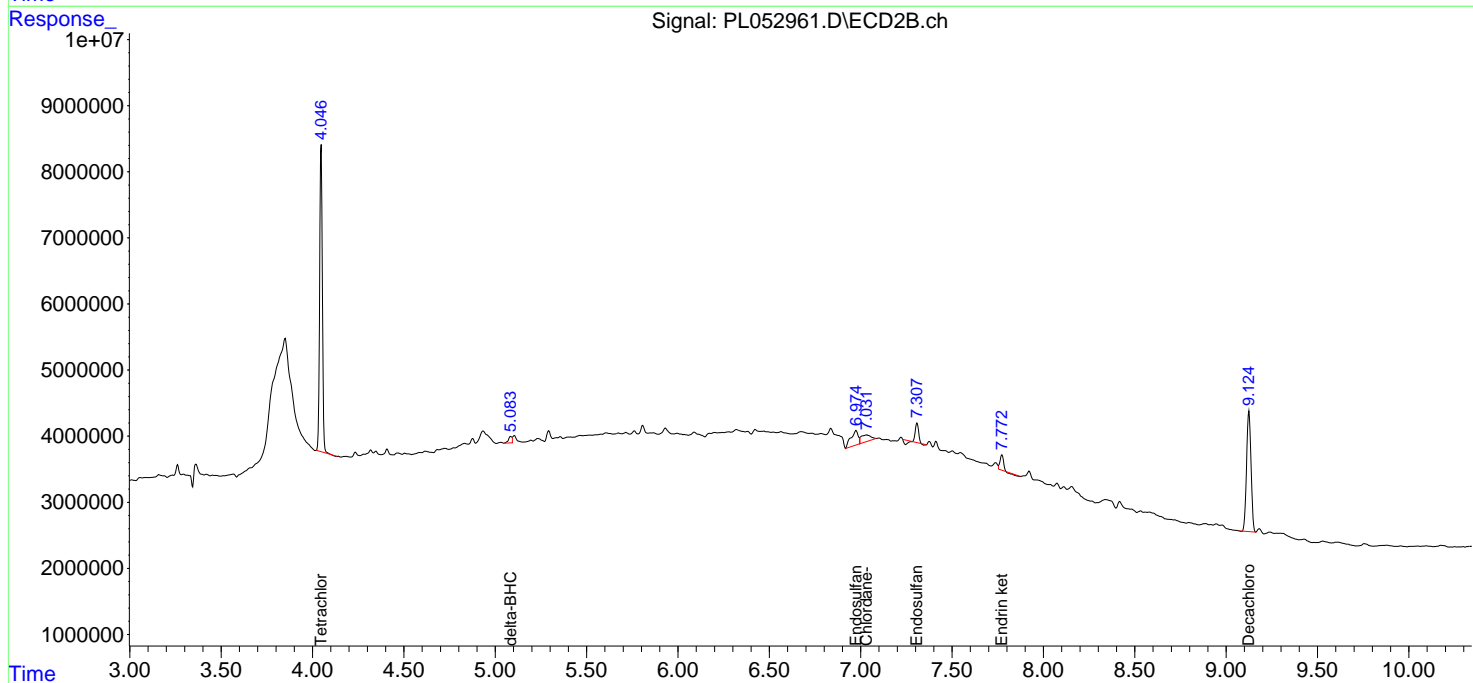
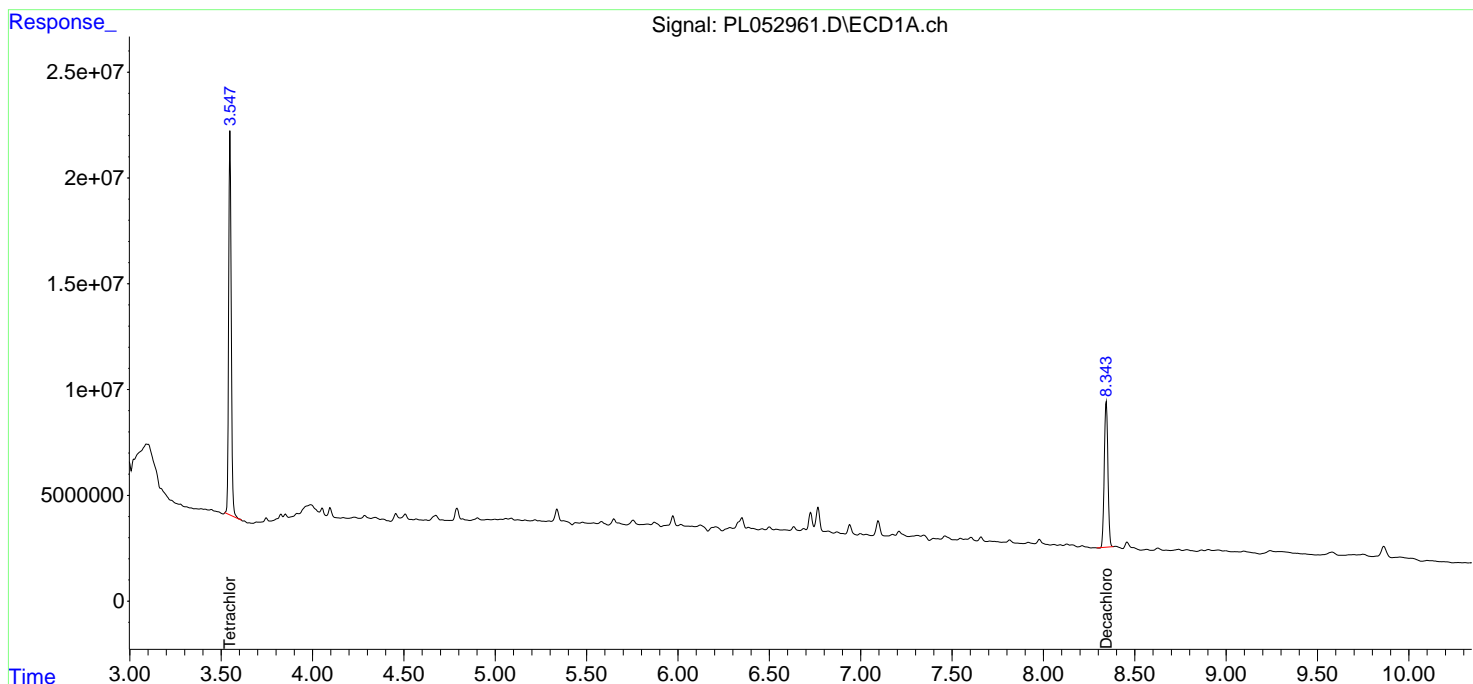
(f)=RT Delta > 1/2 Window (#)=Amounts differ by > 25% (m)=manual int.

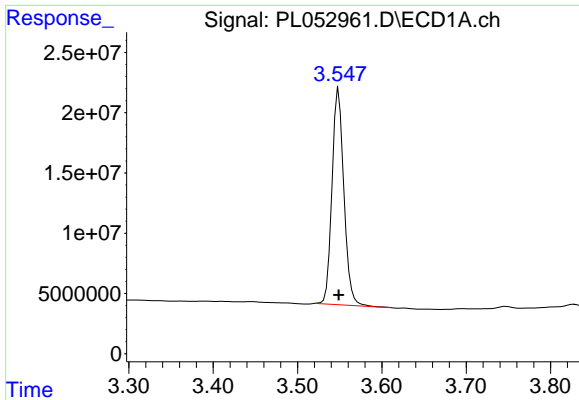
Data Path : Z:\pestpcbsrv\HPCHEM1\ECD_L\Data\PL100119\
 Data File : PL052961.D
 Signal(s) : Signal #1: ECD1A.ch Signal #2: ECD2B.ch
 Acq On : 01 Oct 2019 18:23
 Operator : SG\AJ
 Sample : K4946-08
 Misc :
 ALS Vial : 26 Sample Multiplier: 1

Instrument :
 ECD_L
 ClientSampled :
 GP-4_(1-3)

Integration File signal 1: autoint1.e
 Integration File signal 2: autoint2.e
 Quant Time: Oct 02 03:48:07 2019
 Quant Method : Z:\pestpcbsrv\HPCHEM1\ECD_L\methods\PL092919.M
 Quant Title : GC Extractables
 QLast Update : Mon Sep 30 08:44:08 2019
 Response via : Initial Calibration
 Integrator: ChemStation

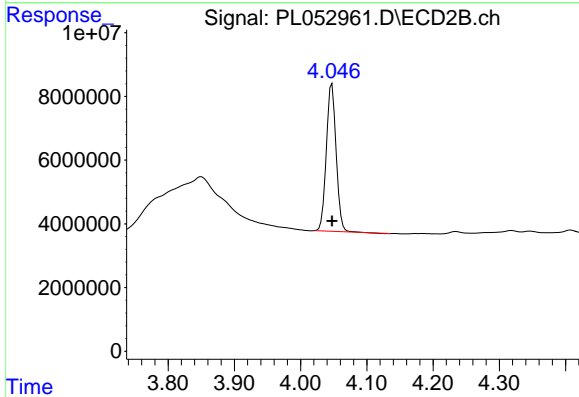
Volume Inj. : 1 µl
 Signal #1 Phase : ZB-MR2 Signal #2 Phase: ZB-MR1
 Signal #1 Info : 30M x 0.32mm x0.2 Signal #2 Info : 30M x 0.32mm x0.5µm



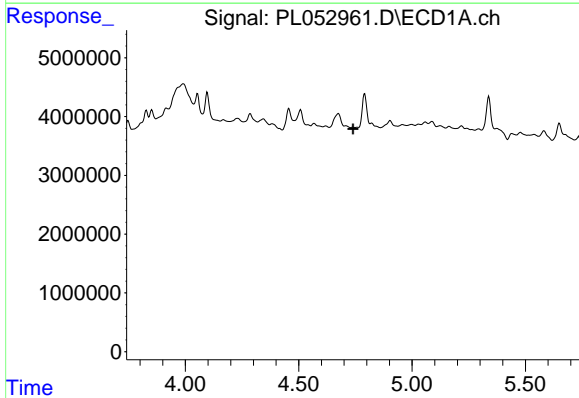


#1 Tetrachloro-m-xylene
 R.T.: 3.549 min
 Delta R.T.: 0.000 min
 Response: 175300408
 Conc: 17.62 ng/ml

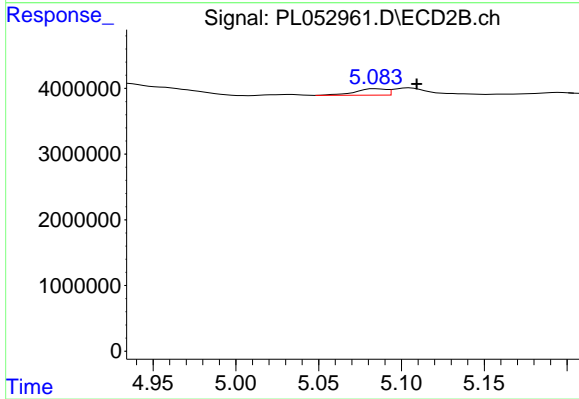
Instrument :
 ECD_L
 ClientSampleId :
 GP-4_(1-3)



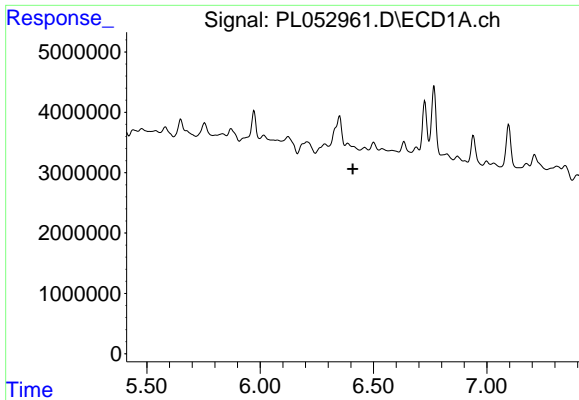
#1 Tetrachloro-m-xylene
 R.T.: 4.047 min
 Delta R.T.: 0.000 min
 Response: 47592957
 Conc: 17.72 ng/ml



#7 delta-BHC
 R.T.: 0.000 min
 Exp R.T. : 4.740 min
 Response: 0
 Conc: N.D.



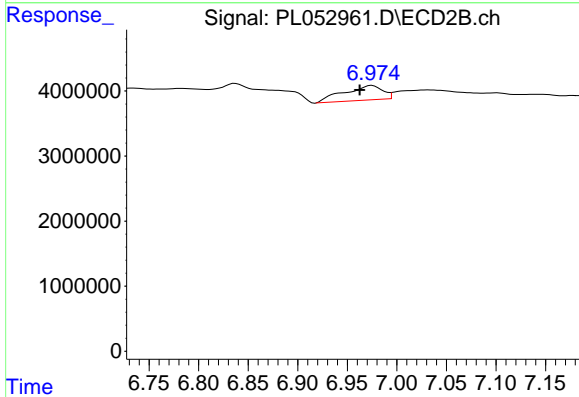
#7 delta-BHC
 R.T.: 5.084 min
 Delta R.T.: -0.025 min
 Response: 1265495
 Conc: 0.35 ng/ml



#15 Endosulfan II

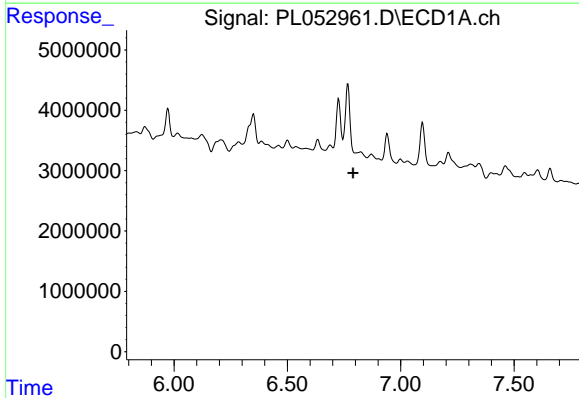
R.T.: 0.000 min
 Exp R.T. : 6.408 min
 Response: 0
 Conc: N.D.

Instrument :
 ECD_L
 ClientSampleId :
 GP-4_(1-3)



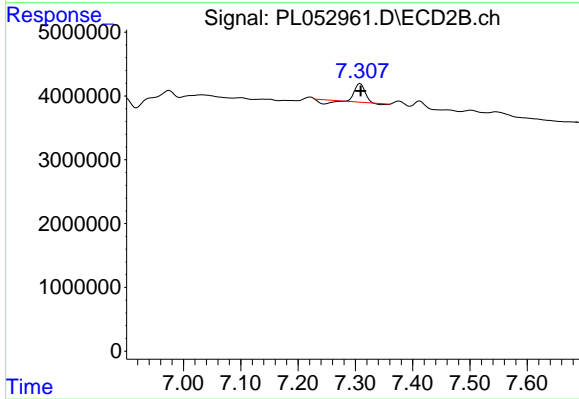
#15 Endosulfan II

R.T.: 6.975 min
 Delta R.T.: 0.012 min
 Response: 6032854
 Conc: 2.03 ng/ml



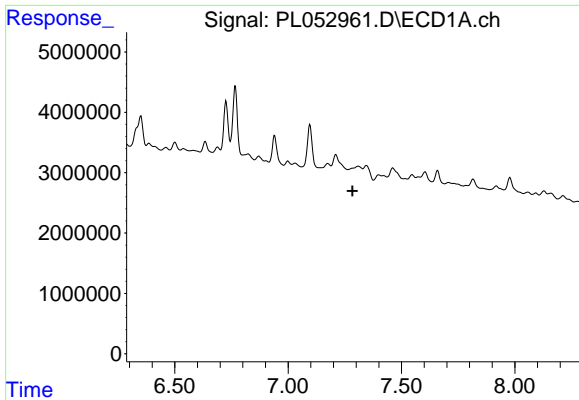
#19 Endosulfan Sulfate

R.T.: 0.000 min
 Exp R.T. : 6.790 min
 Response: 0
 Conc: N.D.



#19 Endosulfan Sulfate

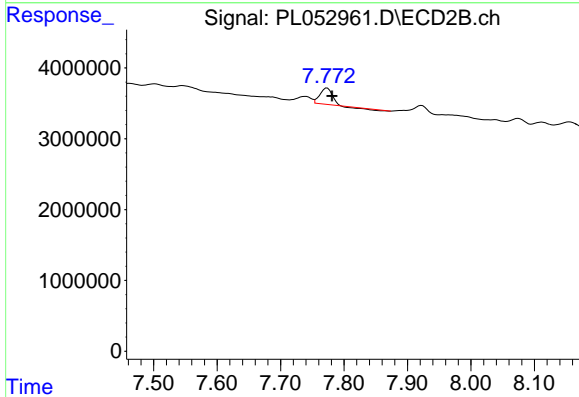
R.T.: 7.309 min
 Delta R.T.: -0.001 min
 Response: 2640163
 Conc: 0.97 ng/ml



#21 Endrin ketone

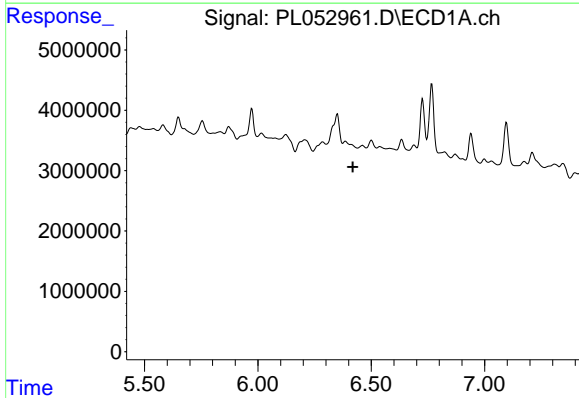
R.T.: 0.000 min
 Exp R.T. : 7.284 min
 Response: 0
 Conc: N.D.

Instrument :
 ECD_L
 ClientSampleId :
 GP-4_(1-3)



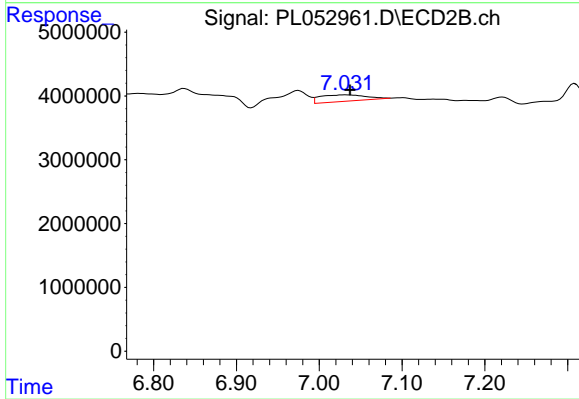
#21 Endrin ketone

R.T.: 7.773 min
 Delta R.T.: -0.008 min
 Response: 2809287
 Conc: 0.98 ng/ml



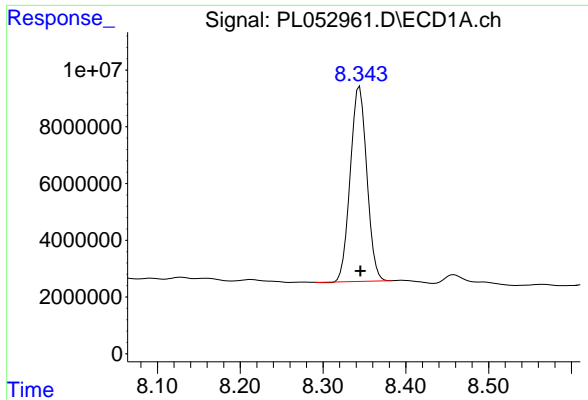
#27 Chlordane-5

R.T.: 0.000 min
 Exp R.T. : 6.418 min
 Response: 0
 Conc: N.D.



#27 Chlordane-5

R.T.: 7.032 min
 Delta R.T.: -0.005 min
 Response: 3899529
 Conc: 44.21 ng/ml



#28 Decachlorobiphenyl

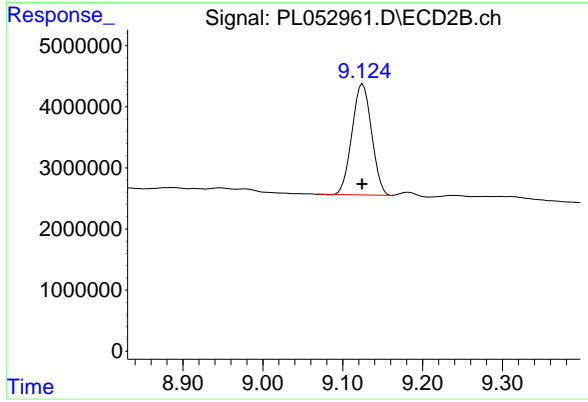
R.T.: 8.344 min

Delta R.T.: 0.000 min

Response: 95244100

Conc: 9.51 ng/ml

Instrument :
ECD_L
ClientSampleId :
GP-4_(1-3)



#28 Decachlorobiphenyl

R.T.: 9.125 min

Delta R.T.: 0.000 min

Response: 31014613

Conc: 10.57 ng/ml