

Data Path : Z:\pestpcbsrv\HPCHEM1\ECD_L\Data\PL100120\
 Data File : PL061904.D
 Signal(s) : Signal #1: ECD1A.ch Signal #2: ECD2B.ch
 Acq On : 01 Oct 2020 15:57
 Operator : DD\AJ
 Sample : PSTDCCC050
 Misc :
 ALS Vial : 4 Sample Multiplier: 1

Instrument :
 ECD_L
 ClientSampled :

Integration File signal 1: autoint1.e
 Integration File signal 2: autoint2.e
 Quant Time: Oct 01 16:10:32 2020
 Quant Method : Z:\pestpcbsrv\HPCHEM1\ECD_L\methods\PL092320.M
 Quant Title : GC Extractables
 QLast Update : Wed Sep 23 13:58:40 2020
 Response via : Initial Calibration
 Integrator: ChemStation

Volume Inj. : 1 µl
 Signal #1 Phase : ZB-MR2 Signal #2 Phase: ZB-MR1
 Signal #1 Info : 30M x 0.32mm x0.2 Signal #2 Info : 30M x 0.32mm x0.5µm

	Compound	RT#1	RT#2	Resp#1	Resp#2	ng/ml	ng/ml

System Monitoring Compounds							
1)	SA Tetrachlo...	3.457	4.006	79629308	122.2E6	46.677	44.775
28)	SA Decachlor...	8.209	9.093	73007137	101.2E6	44.879	45.977
Target Compounds							
2)	A alpha-BHC	3.893	4.396	115.6E6	183.2E6	47.425	45.856
3)	MA gamma-BHC...	4.177	4.682	104.3E6	168.8E6	47.676	45.595
4)	MA Heptachlor	4.478	5.192	96140458	160.6E6	47.112	46.372
5)	MB Aldrin	4.726	5.498	86249435	149.5E6	47.802	46.162
6)	B beta-BHC	4.428	4.853	43622831	68874498	47.763	45.613
7)	B delta-BHC	4.632	5.070	98075243	144.8E6	47.836	56.831
8)	Heptachlo...	5.168	5.886	82631166	136.9E6	47.330	55.251
9)	A Endosulfan I	5.506	6.244	76436008	124.7E6	47.170	45.125
10)	B gamma-Chl...	5.396	6.121	84205525	137.6E6	48.487	46.872
11)	B alpha-Chl...	5.453	6.194	82150469	135.4E6	47.293	45.080
12)	B 4,4'-DDE	5.618	6.351	74798581	122.4E6	47.592	44.843
13)	MA Dieldrin	5.749	6.501	79386721	127.4E6	47.201	44.910
14)	MA Endrin	6.006	6.720	71121700	104.7E6	44.697	42.929
15)	B Endosulfa...	6.279	6.930	73499253	109.2E6	45.459	42.248
16)	A 4,4'-DDD	6.134	6.843	65641581	100.4E6	49.577	45.171
17)	MA 4,4'-DDT	6.375	7.143	57956734	91702055	45.943	41.877
18)	B Endrin al...	6.447	7.054	62888296	94210391	44.722	44.014
19)	B Endosulfa...	6.660	7.278	70927305	103.2E6	45.847	44.078
20)	A Methoxychlor	6.921	7.603	35753193	51473833	44.221	40.853
21)	B Endrin ke...	7.150	7.750	81721289	107.8E6	47.818	45.912
22)	Mirex	7.339	8.205	62983756	79349951	44.927	45.035
24)	Chlordane-2	0.000	5.498f	0	149.5E6	N.D.	1453.198 #
25)	Chlordane-3	5.396	6.121	84205525	137.6E6	535.721	375.635 #
26)	Chlordane-4	5.453	6.194	82150469	135.4E6	629.643	301.615 #
27)	Chlordane-5	6.279	0.000	73499253	0	1347.958	N.D. #

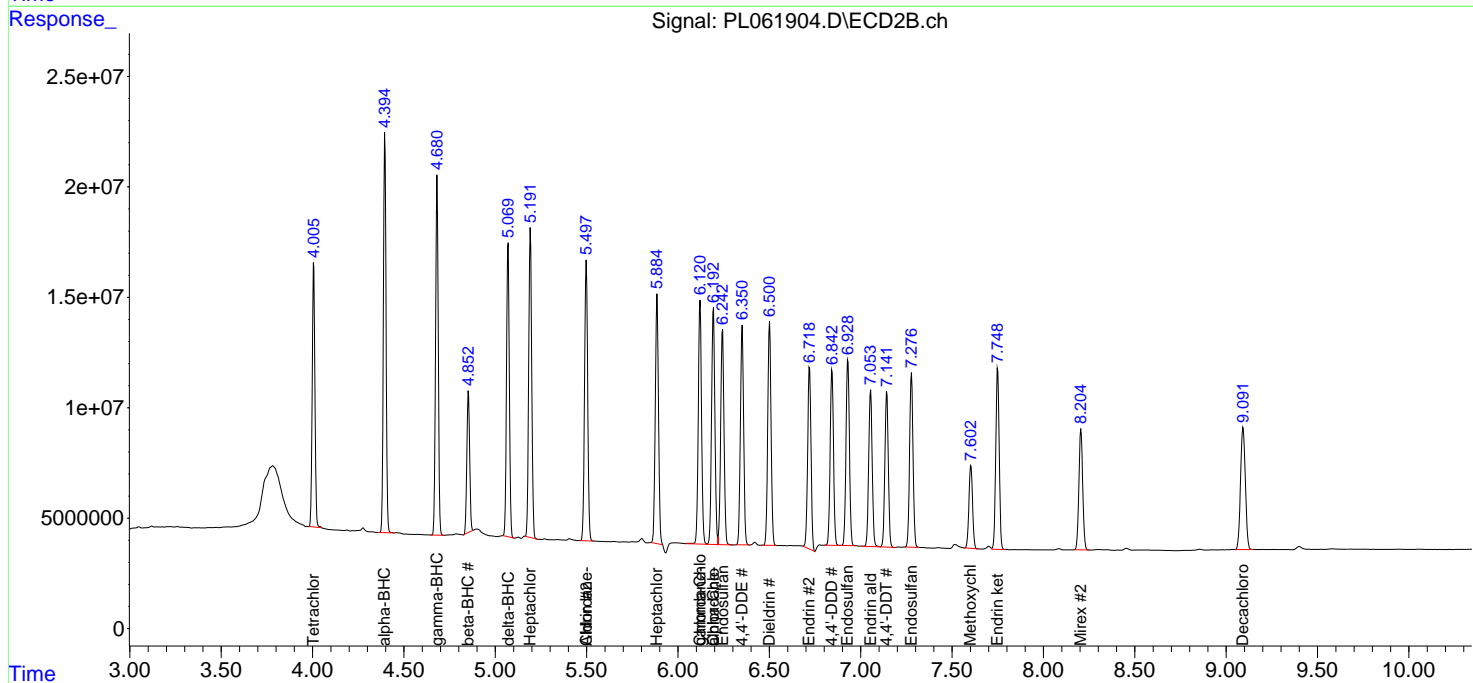
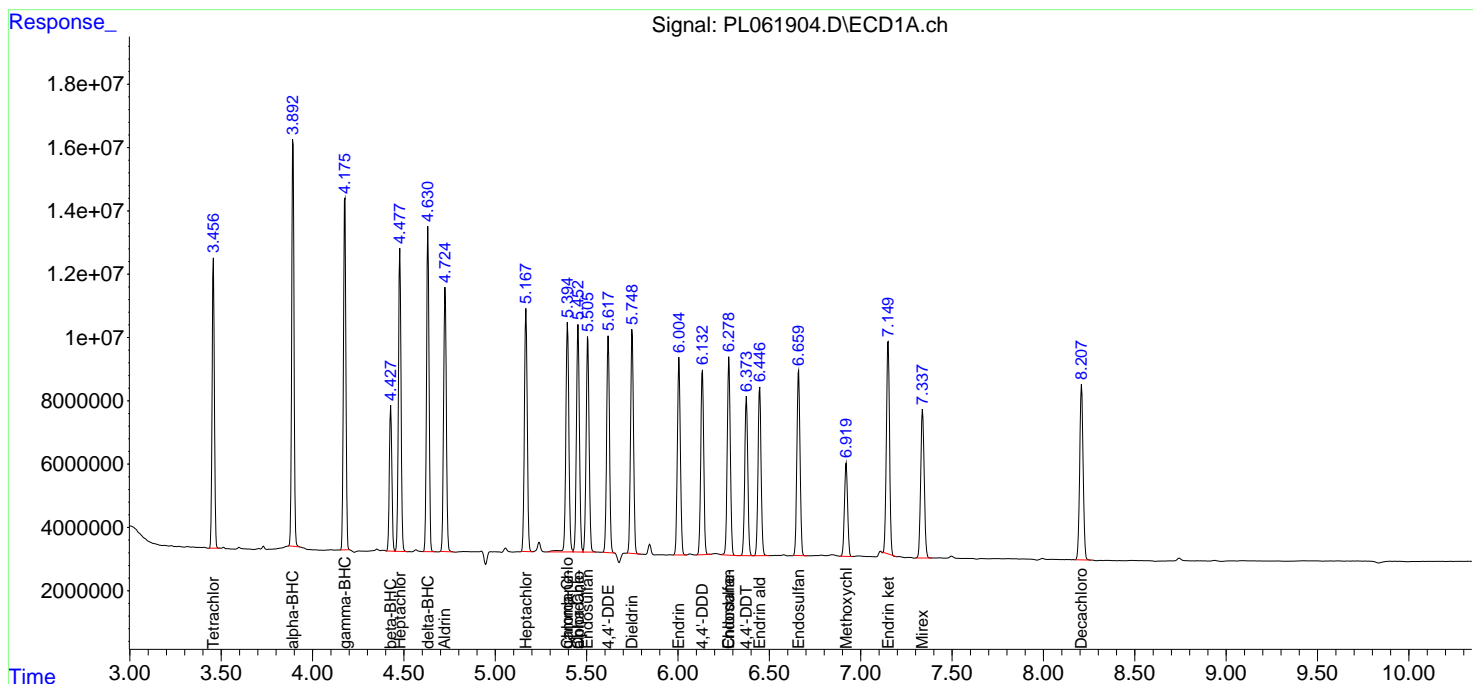
(f)=RT Delta > 1/2 Window (#)=Amounts differ by > 25% (m)=manual int.

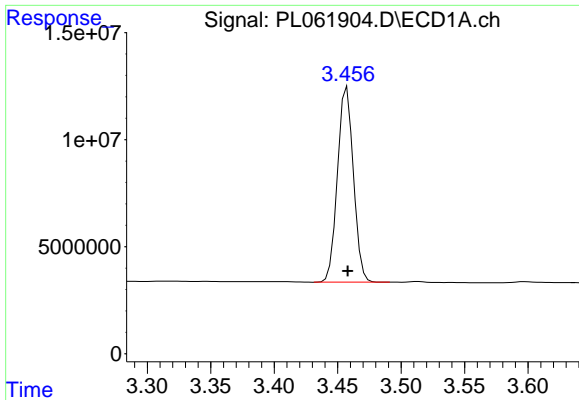
Data Path : Z:\pestpcbsrv\HPCHEM1\ECD_L\Data\PL100120\
 Data File : PL061904.D
 Signal(s) : Signal #1: ECD1A.ch Signal #2: ECD2B.ch
 Acq On : 01 Oct 2020 15:57
 Operator : DD\AJ
 Sample : PSTDCCC050
 Misc :
 ALS Vial : 4 Sample Multiplier: 1

Instrument :
 ECD_L
 ClientSampled :

Integration File signal 1: autoint1.e
 Integration File signal 2: autoint2.e
 Quant Time: Oct 01 16:10:32 2020
 Quant Method : Z:\pestpcbsrv\HPCHEM1\ECD_L\methods\PL092320.M
 Quant Title : GC Extractables
 QLast Update : Wed Sep 23 13:58:40 2020
 Response via : Initial Calibration
 Integrator: ChemStation

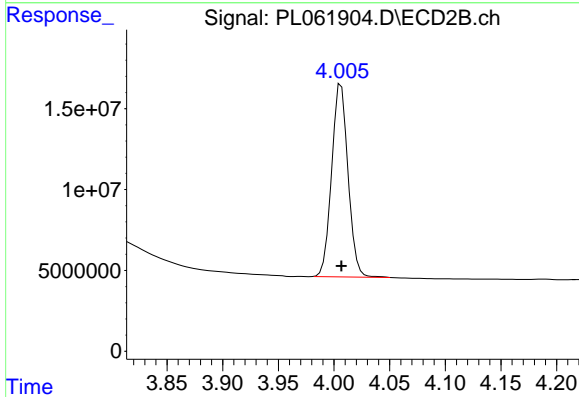
Volume Inj. : 1 µl
 Signal #1 Phase : ZB-MR2 Signal #2 Phase: ZB-MR1
 Signal #1 Info : 30M x 0.32mm x0.2 Signal #2 Info : 30M x 0.32mm x0.5µm



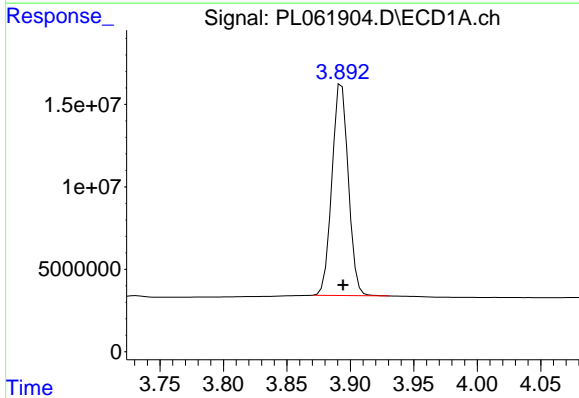


#1 Tetrachloro-m-xylene
 R.T.: 3.457 min
 Delta R.T.: 0.000 min
 Response: 79629308
 Conc: 46.68 ng/ml

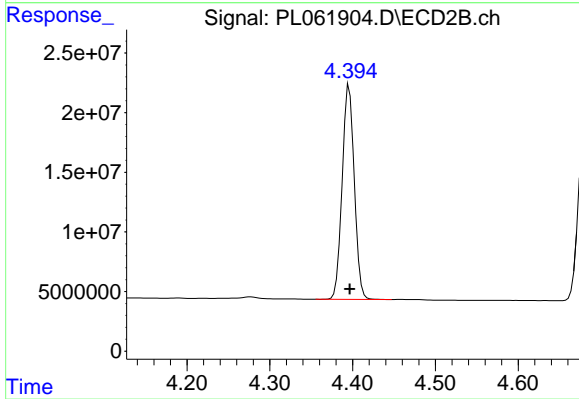
Instrument :
 ECD_L
 ClientSampled :



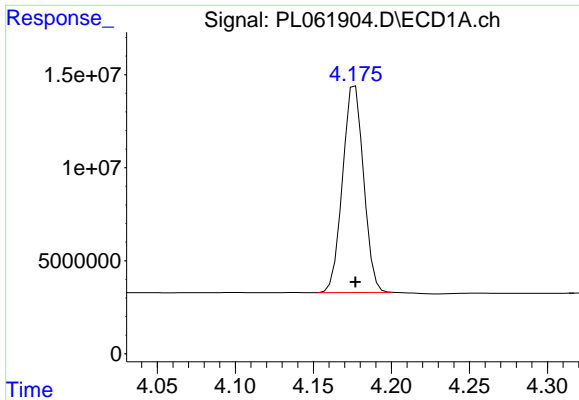
#1 Tetrachloro-m-xylene
 R.T.: 4.006 min
 Delta R.T.: 0.000 min
 Response: 122155692
 Conc: 44.77 ng/ml



#2 alpha-BHC
 R.T.: 3.893 min
 Delta R.T.: -0.001 min
 Response: 115595372
 Conc: 47.43 ng/ml

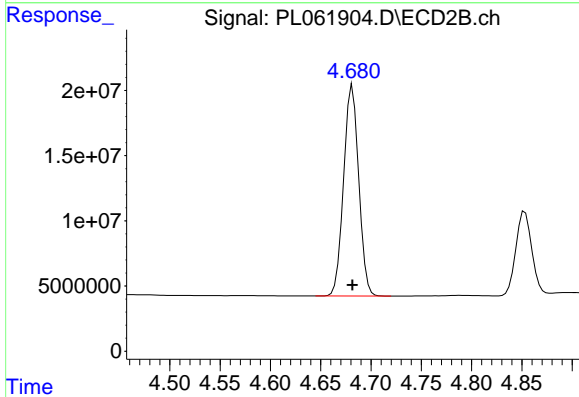


#2 alpha-BHC
 R.T.: 4.396 min
 Delta R.T.: 0.000 min
 Response: 183162332
 Conc: 45.86 ng/ml

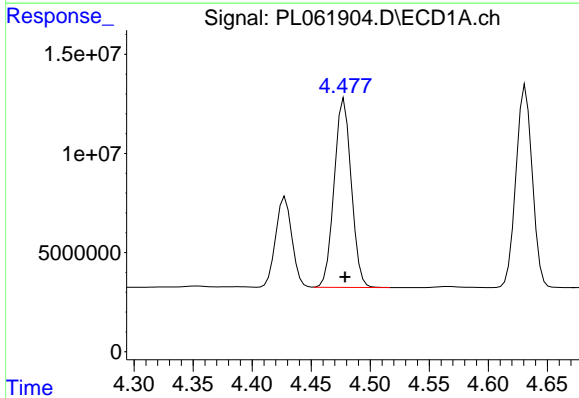


#3 gamma-BHC (Lindane)
 R.T.: 4.177 min
 Delta R.T.: 0.000 min
 Response: 104278370
 Conc: 47.68 ng/ml

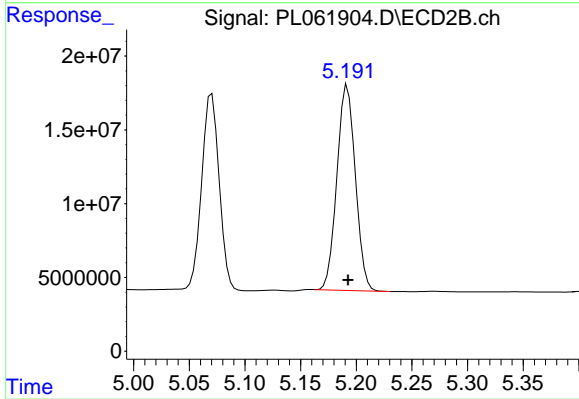
Instrument :
 ECD_L
 ClientSampleId :



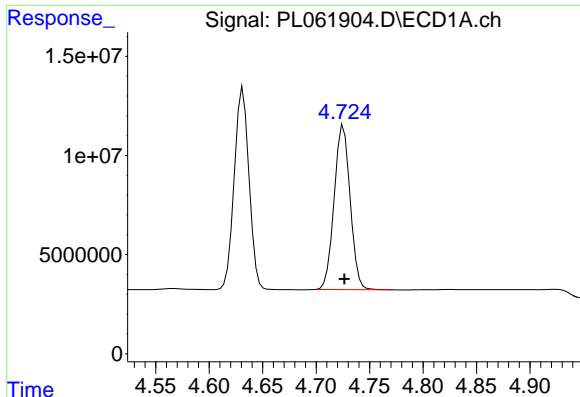
#3 gamma-BHC (Lindane)
 R.T.: 4.682 min
 Delta R.T.: 0.000 min
 Response: 168790027
 Conc: 45.60 ng/ml



#4 Heptachlor
 R.T.: 4.478 min
 Delta R.T.: 0.000 min
 Response: 96140458
 Conc: 47.11 ng/ml

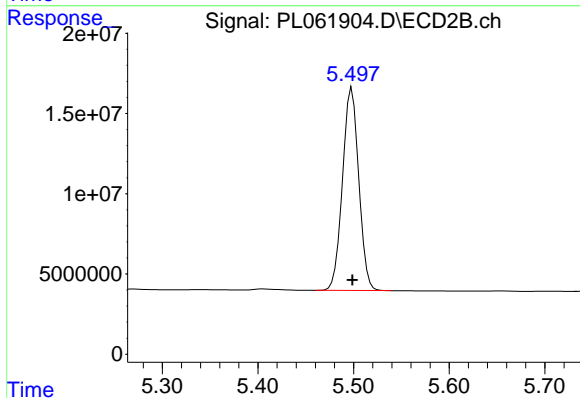


#4 Heptachlor
 R.T.: 5.192 min
 Delta R.T.: 0.000 min
 Response: 160579495
 Conc: 46.37 ng/ml

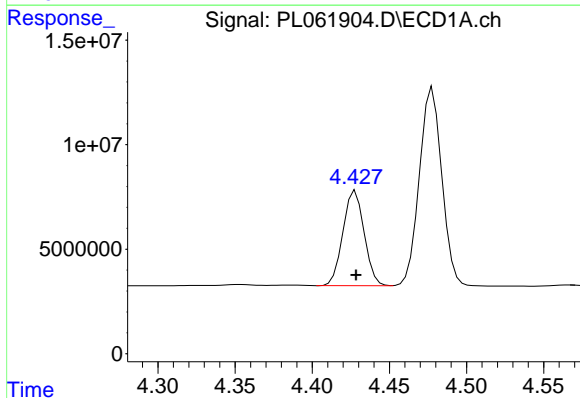


#5 Aldrin
 R.T.: 4.726 min
 Delta R.T.: 0.000 min
 Response: 86249435
 Conc: 47.80 ng/ml

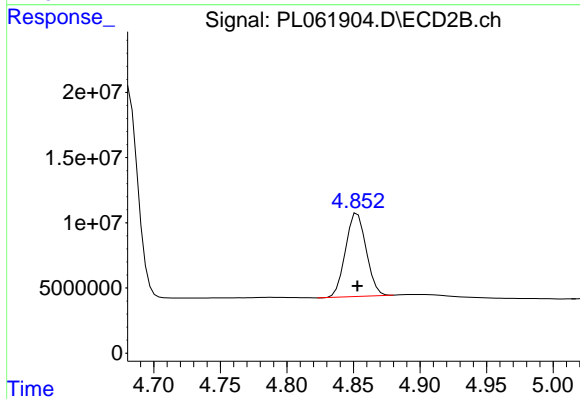
Instrument :
 ECD_L
 ClientSampled :



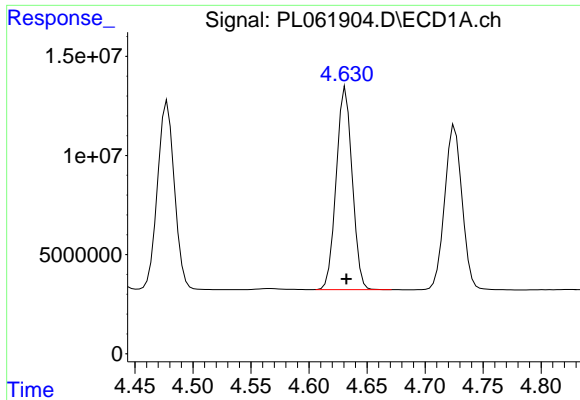
#5 Aldrin
 R.T.: 5.498 min
 Delta R.T.: 0.000 min
 Response: 149541091
 Conc: 46.16 ng/ml



#6 beta-BHC
 R.T.: 4.428 min
 Delta R.T.: 0.000 min
 Response: 43622831
 Conc: 47.76 ng/ml

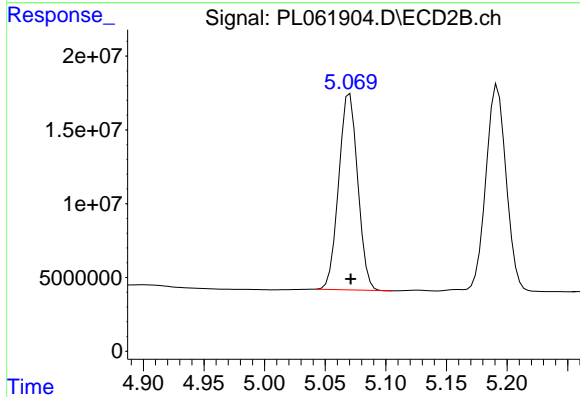


#6 beta-BHC
 R.T.: 4.853 min
 Delta R.T.: 0.000 min
 Response: 68874498
 Conc: 45.61 ng/ml

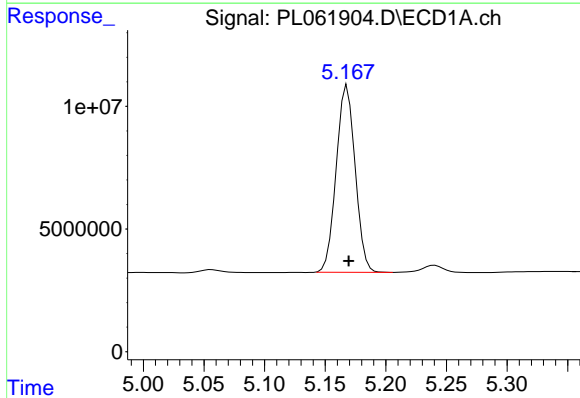


#7 delta-BHC
 R.T.: 4.632 min
 Delta R.T.: 0.000 min
 Response: 98075243
 Conc: 47.84 ng/ml

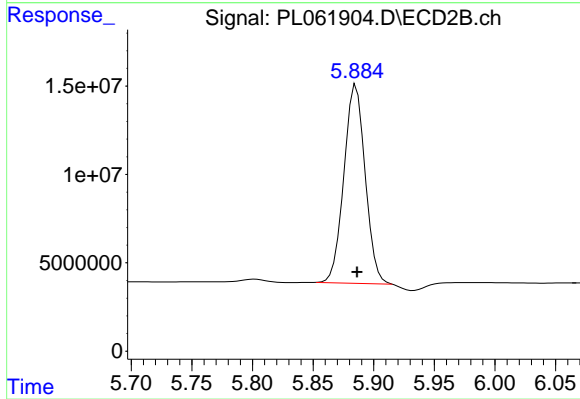
Instrument :
 ECD_L
 ClientSampled :



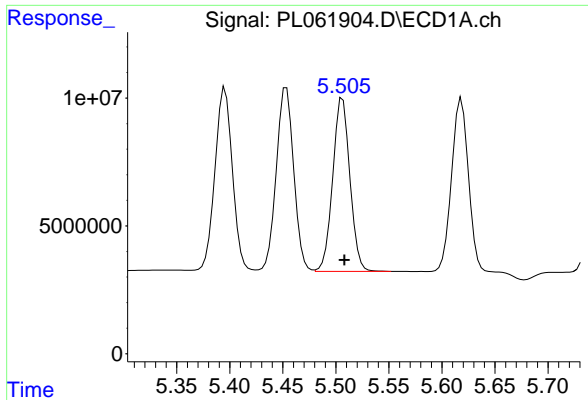
#7 delta-BHC
 R.T.: 5.070 min
 Delta R.T.: 0.000 min
 Response: 144811130
 Conc: 56.83 ng/ml



#8 Heptachlor epoxide
 R.T.: 5.168 min
 Delta R.T.: -0.001 min
 Response: 82631166
 Conc: 47.33 ng/ml



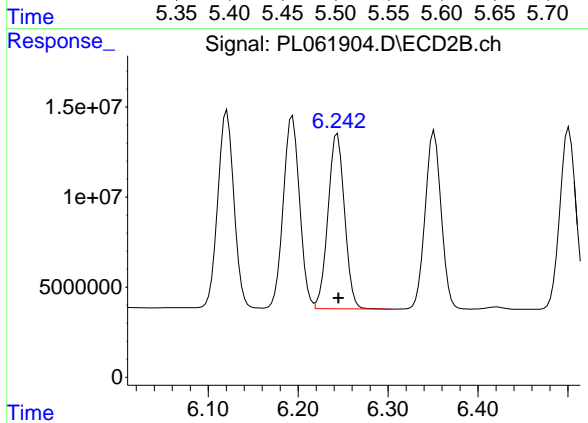
#8 Heptachlor epoxide
 R.T.: 5.886 min
 Delta R.T.: 0.000 min
 Response: 136933284
 Conc: 55.25 ng/ml



#9 Endosulfan I

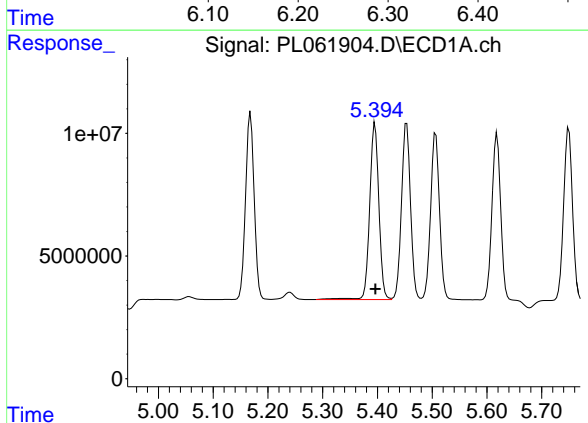
R.T.: 5.506 min
Delta R.T.: -0.002 min
Response: 76436008
Conc: 47.17 ng/ml

Instrument :
ECD_L
ClientSampled :



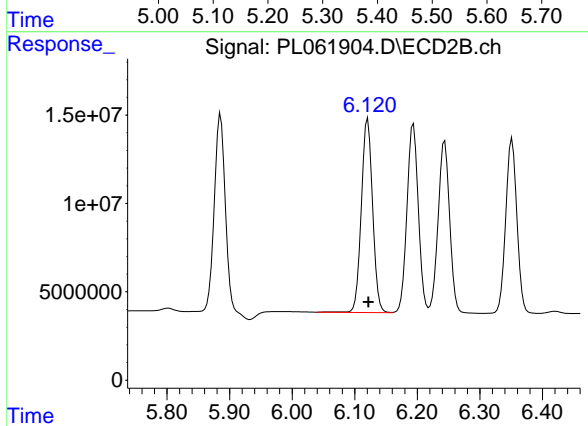
#9 Endosulfan I

R.T.: 6.244 min
Delta R.T.: 0.000 min
Response: 124658892
Conc: 45.13 ng/ml



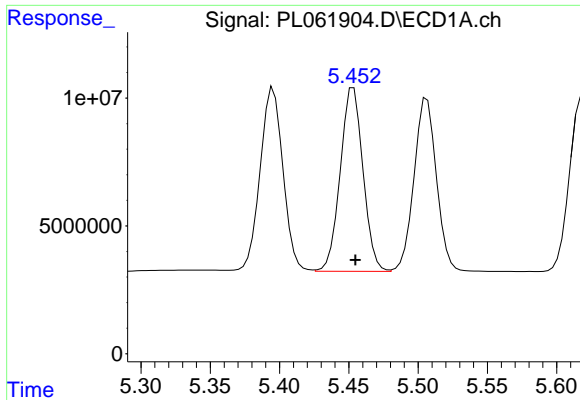
#10 gamma-Chlordane

R.T.: 5.396 min
Delta R.T.: 0.000 min
Response: 84205525
Conc: 48.49 ng/ml



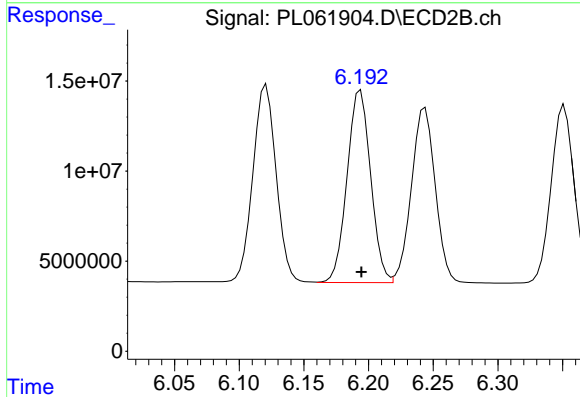
#10 gamma-Chlordane

R.T.: 6.121 min
Delta R.T.: 0.000 min
Response: 137646486
Conc: 46.87 ng/ml

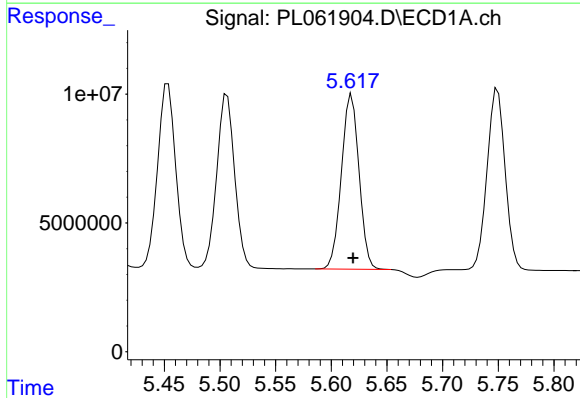


#11 alpha-Chlordane
 R.T.: 5.453 min
 Delta R.T.: -0.001 min
 Response: 82150469
 Conc: 47.29 ng/ml

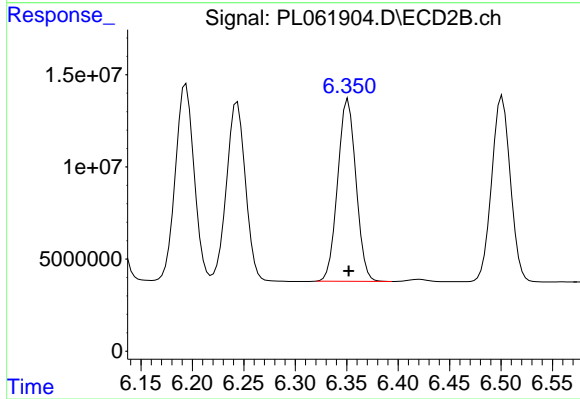
Instrument :
 ECD_L
 ClientSampled :



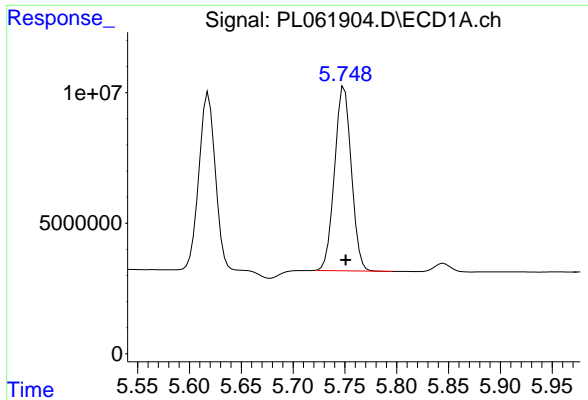
#11 alpha-Chlordane
 R.T.: 6.194 min
 Delta R.T.: 0.000 min
 Response: 135399796
 Conc: 45.08 ng/ml



#12 4,4'-DDE
 R.T.: 5.618 min
 Delta R.T.: -0.001 min
 Response: 74798581
 Conc: 47.59 ng/ml

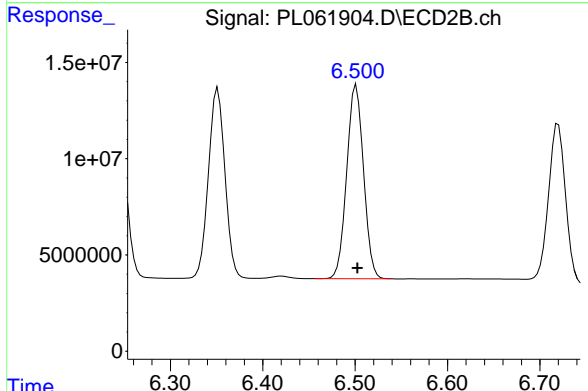


#12 4,4'-DDE
 R.T.: 6.351 min
 Delta R.T.: 0.000 min
 Response: 122412177
 Conc: 44.84 ng/ml

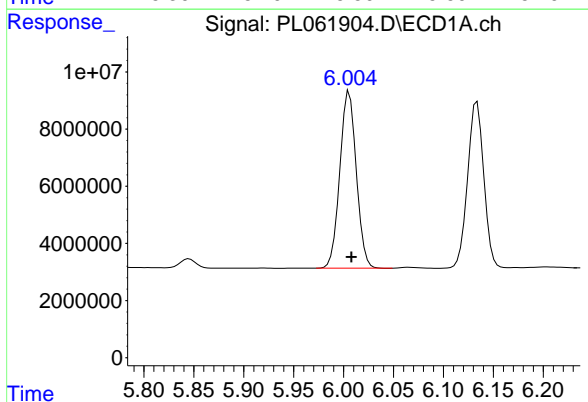


#13 Dieldrin
 R.T.: 5.749 min
 Delta R.T.: -0.001 min
 Response: 79386721
 Conc: 47.20 ng/ml

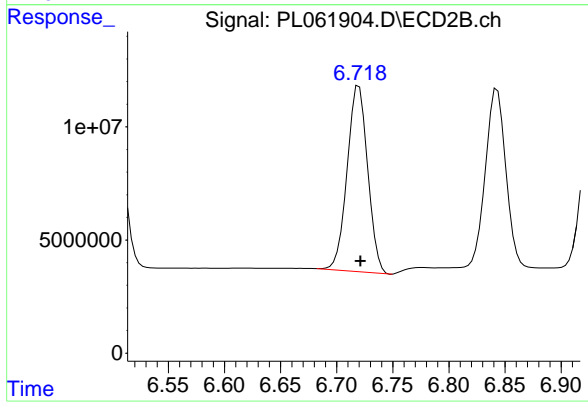
Instrument :
 ECD_L
 ClientSampled :



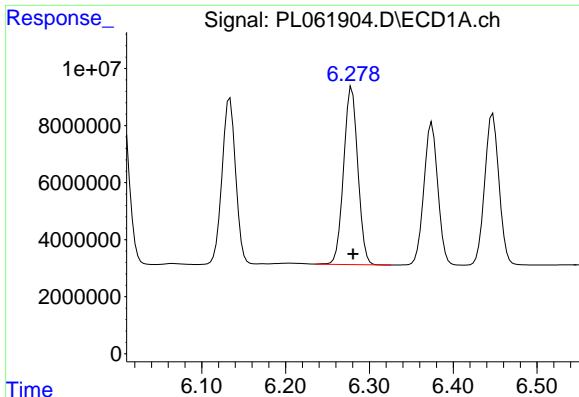
#13 Dieldrin
 R.T.: 6.501 min
 Delta R.T.: 0.000 min
 Response: 127405401
 Conc: 44.91 ng/ml



#14 Endrin
 R.T.: 6.006 min
 Delta R.T.: -0.002 min
 Response: 71121700
 Conc: 44.70 ng/ml



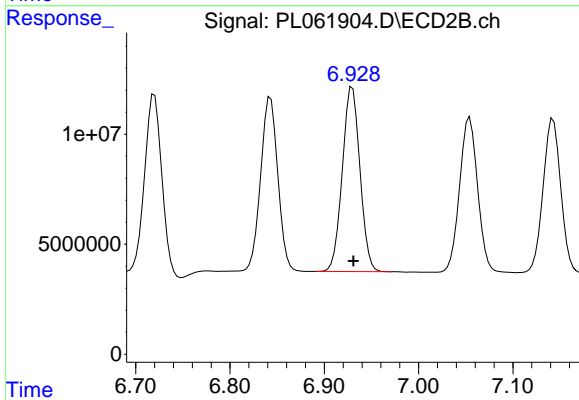
#14 Endrin
 R.T.: 6.720 min
 Delta R.T.: -0.001 min
 Response: 104730215
 Conc: 42.93 ng/ml



#15 Endosulfan II

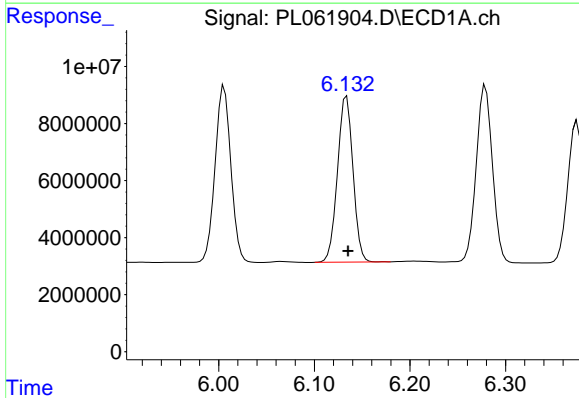
R.T.: 6.279 min
Delta R.T.: -0.002 min
Response: 73499253
Conc: 45.46 ng/ml

Instrument :
ECD_L
ClientSampleId :



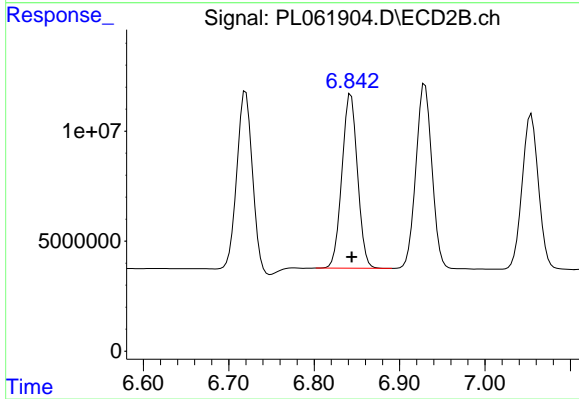
#15 Endosulfan II

R.T.: 6.930 min
Delta R.T.: 0.000 min
Response: 109197343
Conc: 42.25 ng/ml



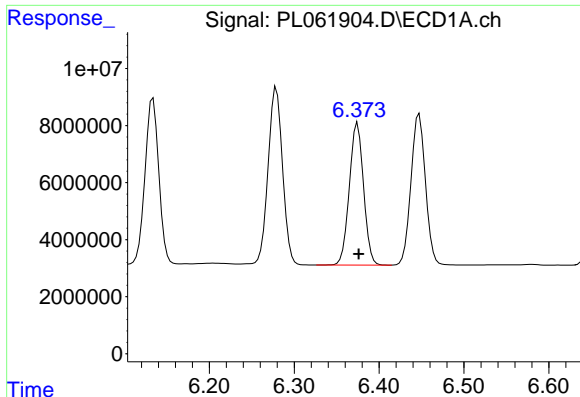
#16 4,4'-DDD

R.T.: 6.134 min
Delta R.T.: -0.002 min
Response: 65641581
Conc: 49.58 ng/ml



#16 4,4'-DDD

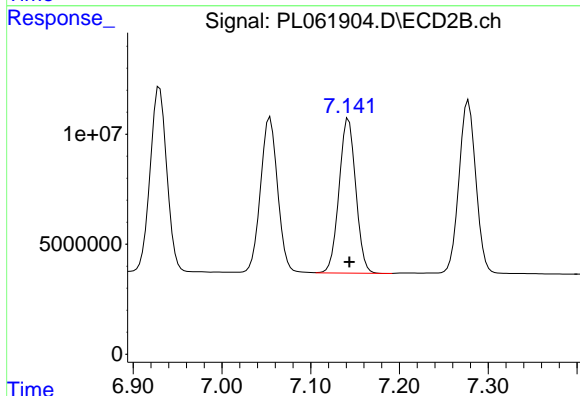
R.T.: 6.843 min
Delta R.T.: 0.000 min
Response: 100418870
Conc: 45.17 ng/ml



#17 4,4'-DDT

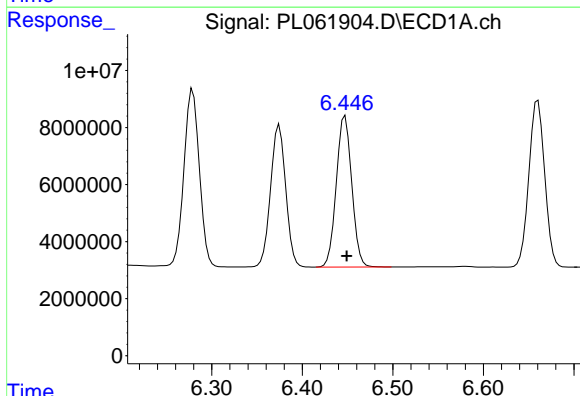
R.T.: 6.375 min
 Delta R.T.: -0.002 min
 Response: 57956734
 Conc: 45.94 ng/ml

Instrument :
 ECD_L
 ClientSampleId :



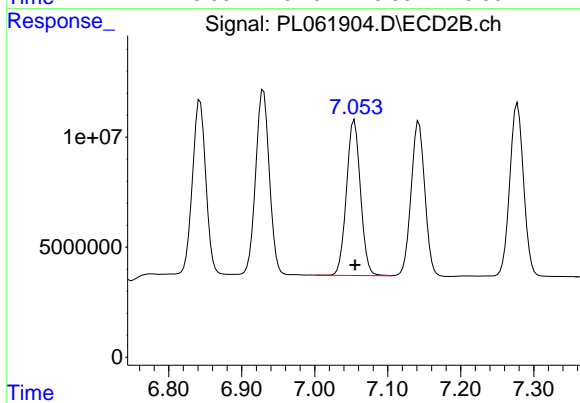
#17 4,4'-DDT

R.T.: 7.143 min
 Delta R.T.: -0.001 min
 Response: 91702055
 Conc: 41.88 ng/ml



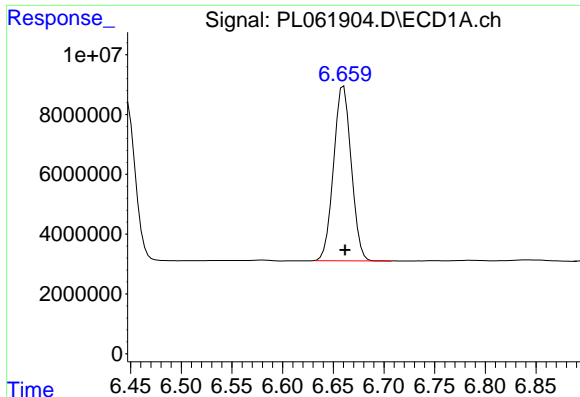
#18 Endrin aldehyde

R.T.: 6.447 min
 Delta R.T.: -0.002 min
 Response: 62888296
 Conc: 44.72 ng/ml



#18 Endrin aldehyde

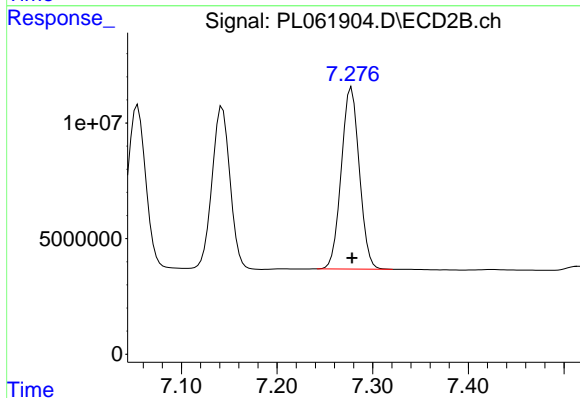
R.T.: 7.054 min
 Delta R.T.: 0.000 min
 Response: 94210391
 Conc: 44.01 ng/ml



#19 Endosulfan Sulfate

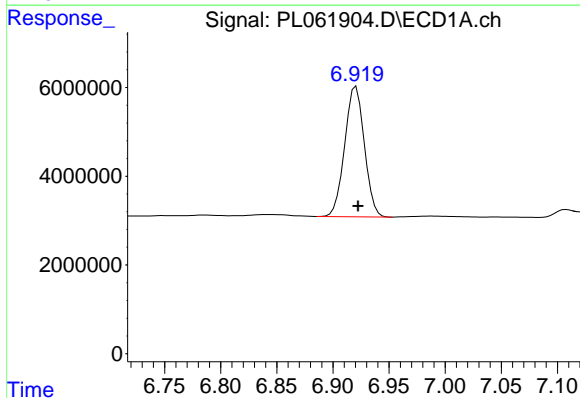
R.T.: 6.660 min
 Delta R.T.: -0.002 min
 Response: 70927305
 Conc: 45.85 ng/ml

Instrument :
 ECD_L
 ClientSampled :



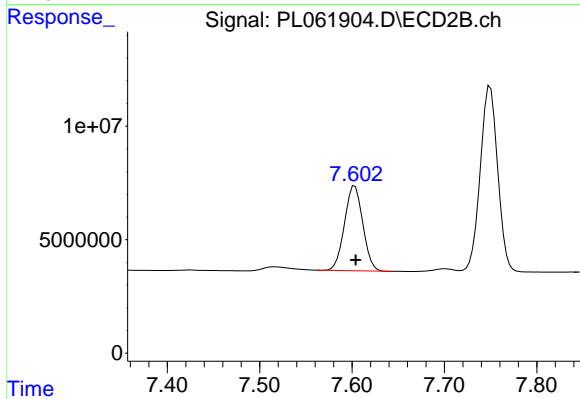
#19 Endosulfan Sulfate

R.T.: 7.278 min
 Delta R.T.: 0.000 min
 Response: 103213943
 Conc: 44.08 ng/ml



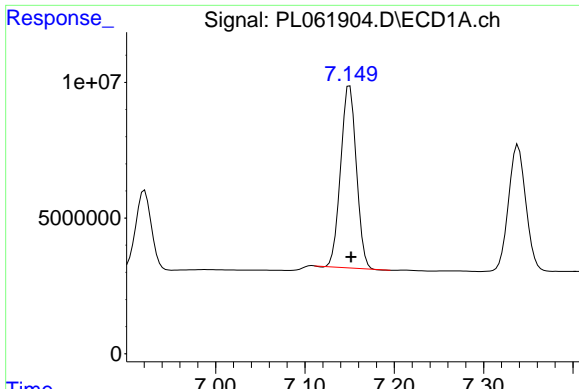
#20 Methoxychlor

R.T.: 6.921 min
 Delta R.T.: -0.002 min
 Response: 35753193
 Conc: 44.22 ng/ml



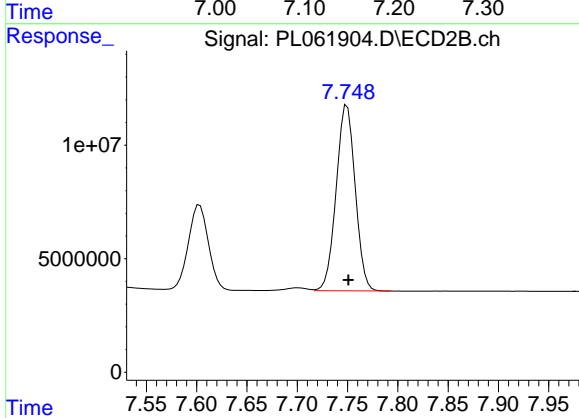
#20 Methoxychlor

R.T.: 7.603 min
 Delta R.T.: 0.000 min
 Response: 51473833
 Conc: 40.85 ng/ml

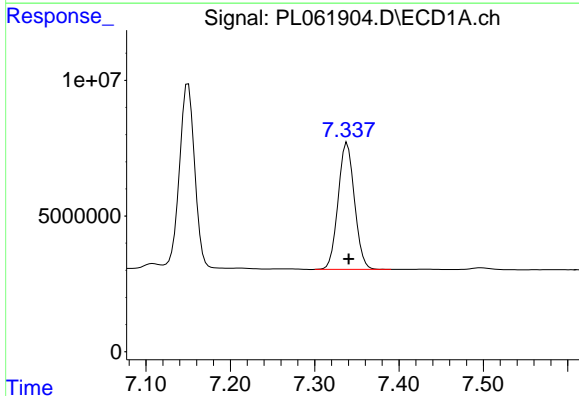


#21 Endrin ketone
 R.T.: 7.150 min
 Delta R.T.: -0.001 min
 Response: 81721289
 Conc: 47.82 ng/ml

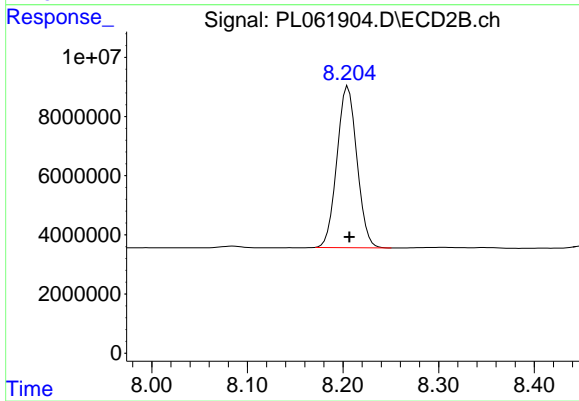
Instrument :
 ECD_L
 ClientSampled :



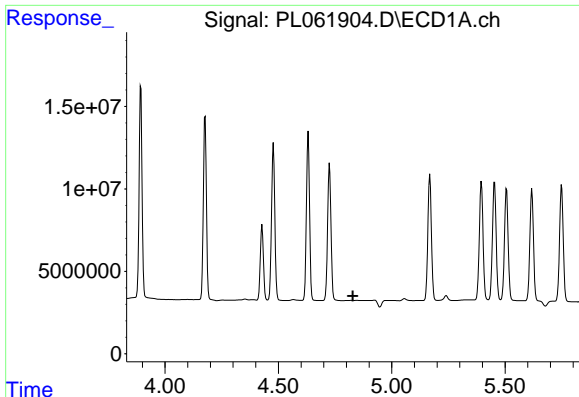
#21 Endrin ketone
 R.T.: 7.750 min
 Delta R.T.: -0.001 min
 Response: 107755811
 Conc: 45.91 ng/ml



#22 Mirex
 R.T.: 7.339 min
 Delta R.T.: -0.002 min
 Response: 62983756
 Conc: 44.93 ng/ml



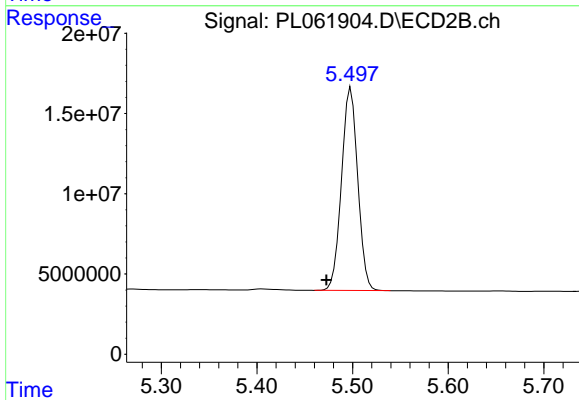
#22 Mirex
 R.T.: 8.205 min
 Delta R.T.: -0.001 min
 Response: 79349951
 Conc: 45.04 ng/ml



#24 Chlordane-2

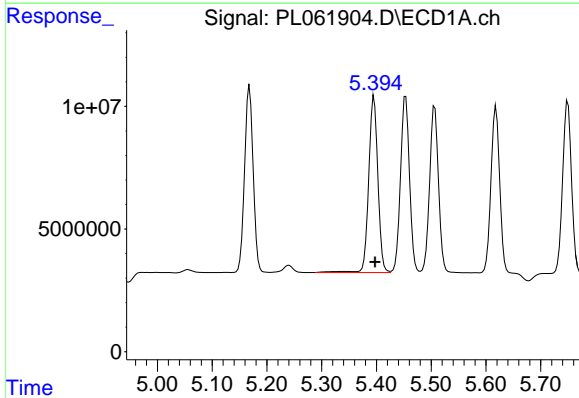
R.T.: 0.000 min
 Exp R.T.: 4.829 min
 Response: 0
 Conc: N.D.

Instrument :
 ECD_L
 ClientSampled :



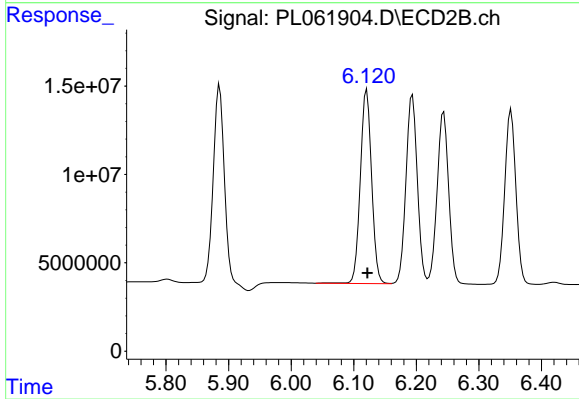
#24 Chlordane-2

R.T.: 5.498 min
 Delta R.T.: 0.026 min
 Response: 149541091
 Conc: 1453.20 ng/ml



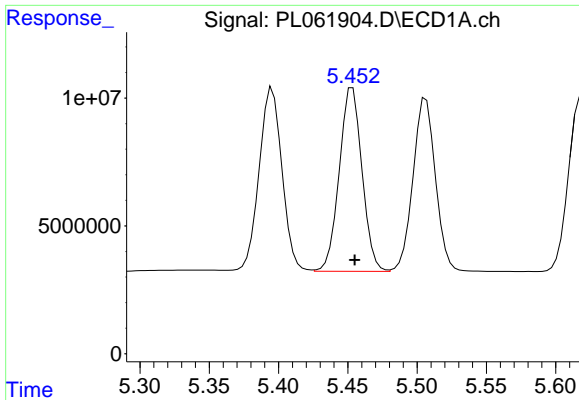
#25 Chlordane-3

R.T.: 5.396 min
 Delta R.T.: -0.002 min
 Response: 84205525
 Conc: 535.72 ng/ml



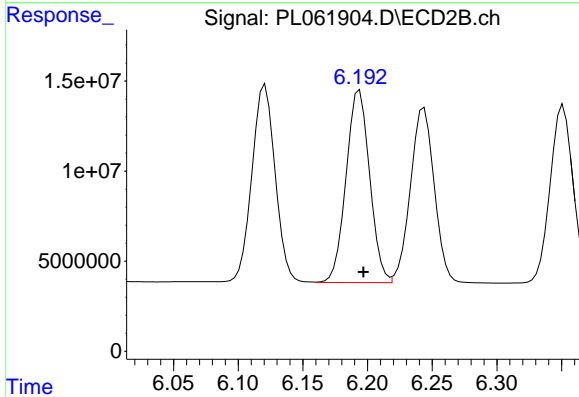
#25 Chlordane-3

R.T.: 6.121 min
 Delta R.T.: 0.000 min
 Response: 137646486
 Conc: 375.63 ng/ml

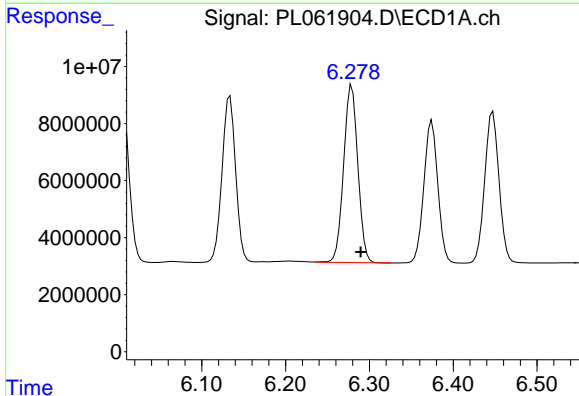


#26 Chlordane-4
 R.T.: 5.453 min
 Delta R.T.: -0.002 min
 Response: 82150469
 Conc: 629.64 ng/ml

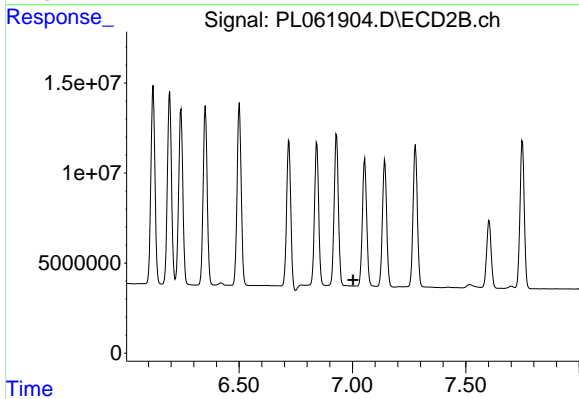
Instrument :
 ECD_L
 ClientSampled :



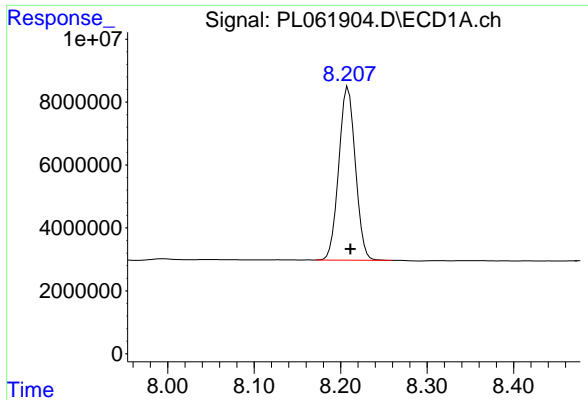
#26 Chlordane-4
 R.T.: 6.194 min
 Delta R.T.: -0.003 min
 Response: 135399796
 Conc: 301.61 ng/ml



#27 Chlordane-5
 R.T.: 6.279 min
 Delta R.T.: -0.011 min
 Response: 73499253
 Conc: 1347.96 ng/ml



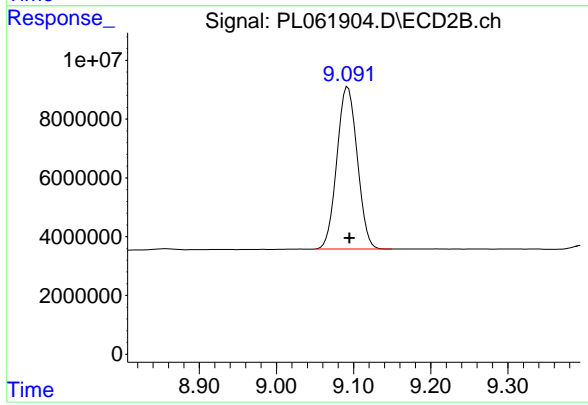
#27 Chlordane-5
 R.T.: 0.000 min
 Exp R.T. : 7.004 min
 Response: 0
 Conc: N.D.



#28 Decachlorobiphenyl

R.T.: 8.209 min
Delta R.T.: -0.003 min
Response: 73007137
Conc: 44.88 ng/ml

Instrument :
ECD_L
ClientSampleId :



#28 Decachlorobiphenyl

R.T.: 9.093 min
Delta R.T.: -0.002 min
Response: 101212298
Conc: 45.98 ng/ml