

Data Path : Z:\pestpcbsrv\HPCHEM1\ECD_L\Data\PL100120\
 Data File : PL061906.D
 Signal(s) : Signal #1: ECD1A.ch Signal #2: ECD2B.ch
 Acq On : 01 Oct 2020 16:26
 Operator : DD\AJ
 Sample : L4198-19
 Misc :
 ALS Vial : 21 Sample Multiplier: 1

Instrument :
 ECD_L
 ClientSampleId :

Integration File signal 1: autoint1.e
 Integration File signal 2: autoint2.e
 Quant Time: Oct 02 03:39:18 2020
 Quant Method : Z:\pestpcbsrv\HPCHEM1\ECD_L\methods\PL092320.M
 Quant Title : GC Extractables
 QLast Update : Wed Sep 23 13:58:40 2020
 Response via : Initial Calibration
 Integrator: ChemStation

Volume Inj. : 1 µl
 Signal #1 Phase : ZB-MR2 Signal #2 Phase: ZB-MR1
 Signal #1 Info : 30M x 0.32mm x0.2 Signal #2 Info : 30M x 0.32mm x0.5µm

Compound	RT#1	RT#2	Resp#1	Resp#2	ng/ml	ng/ml

System Monitoring Compounds						
1) SA Tetrachlo...	3.457	4.007	25294296	38507502	14.827	14.114
28) SA Decachlor...	8.209	9.094	23182459	31299248	14.251	14.218
Target Compounds						
10) B gamma-Chl...	0.000	6.124	0	2389283	N.D.	0.814 #
11) B alpha-Chl...	0.000	6.196	0	3204730	N.D.	1.067 #
12) B 4,4'-DDE	5.619	6.350	13278363	20209420	8.449	7.403
14) MA Endrin	0.000	6.748f	0	771903	N.D.	0.316 #
16) A 4,4'-DDD	0.000	6.845	0	3829010	N.D.	1.722 #
17) MA 4,4'-DDT	6.375	7.142	12034575	21695986	9.540	9.908
25) Chlordane-3	0.000	6.124	0	2389283	N.D.	6.520 #
26) Chlordane-4	0.000	6.196	0	3204730	N.D.	7.139 #

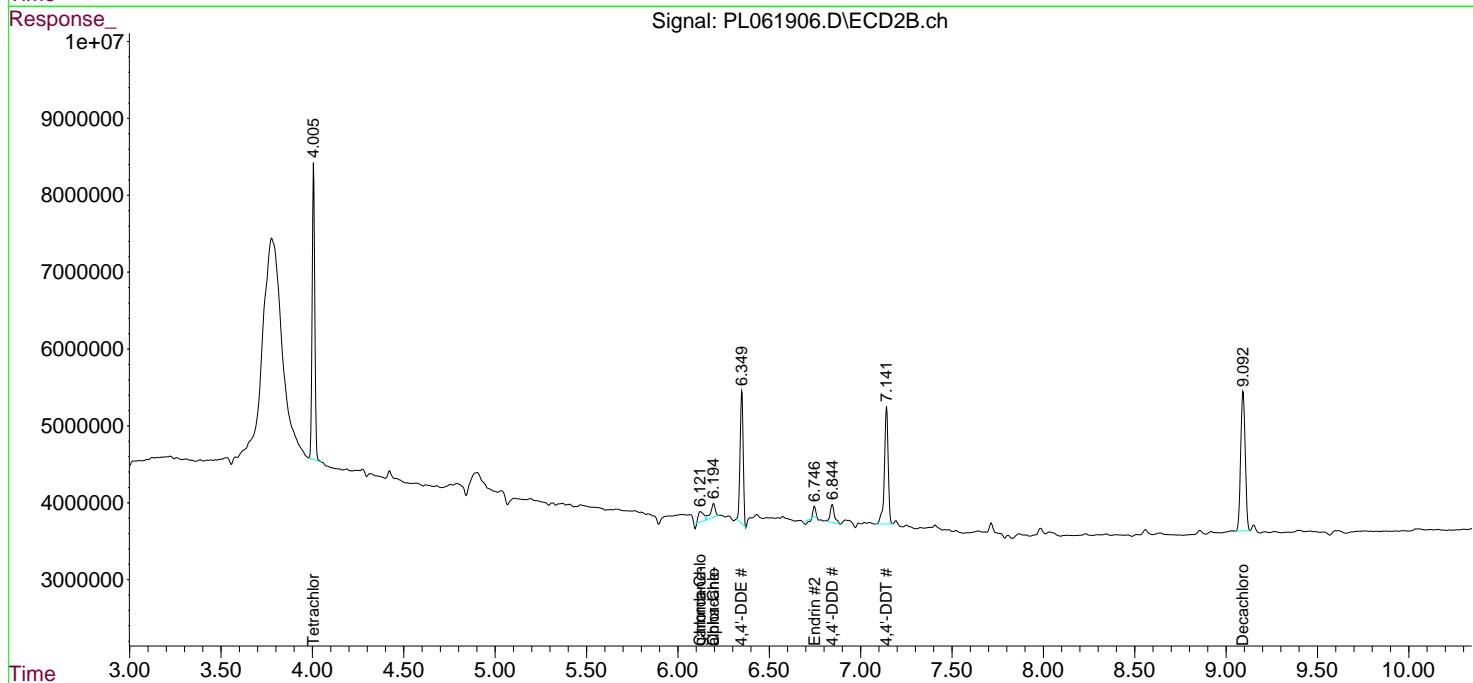
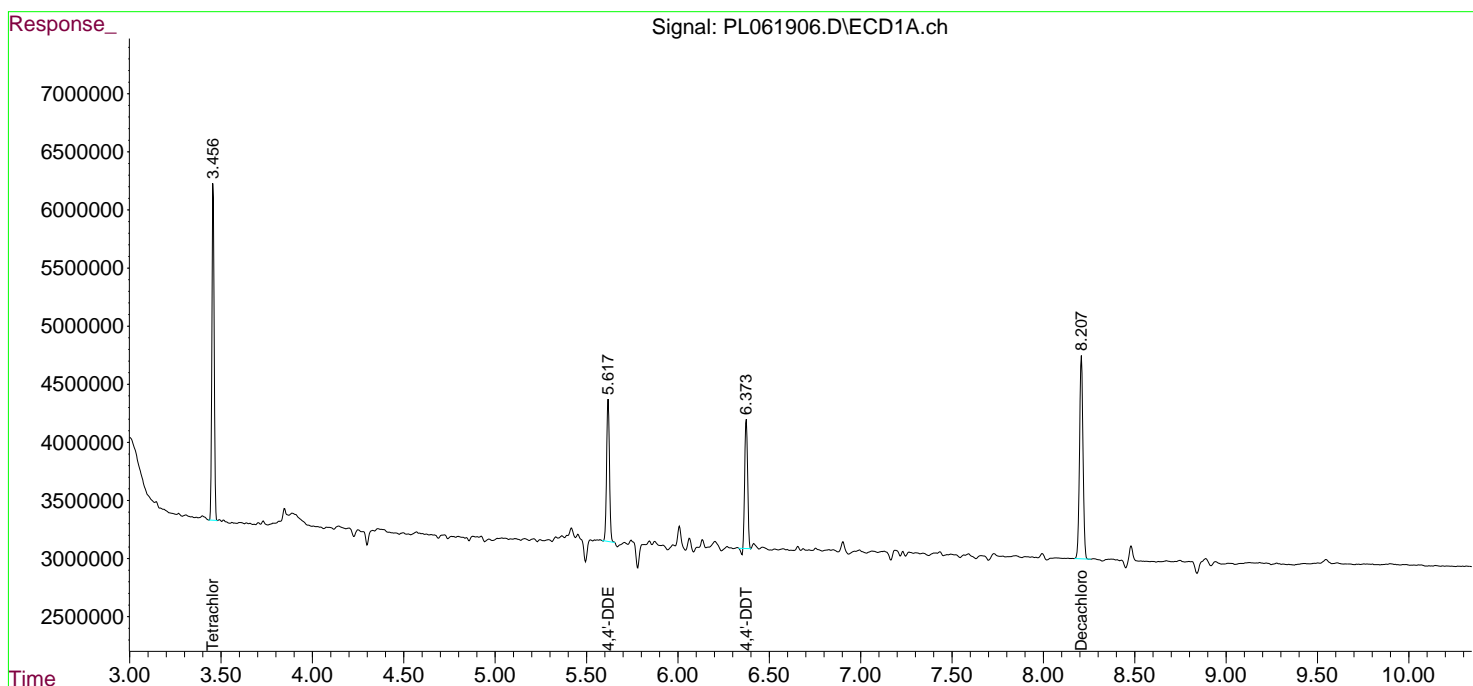
(f)=RT Delta > 1/2 Window (#)=Amounts differ by > 25% (m)=manual int.

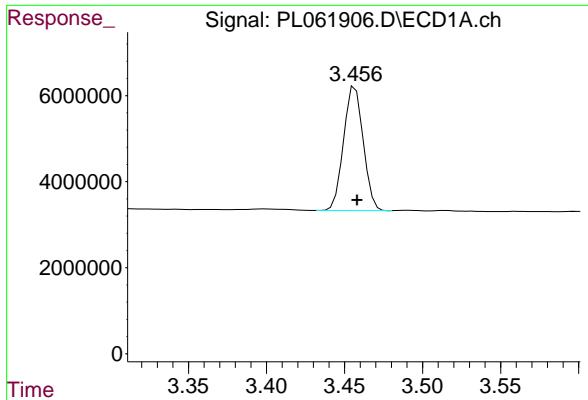
Data Path : Z:\pestpcbsrv\HPCHEM1\ECD_L\Data\PL100120\
 Data File : PL061906.D
 Signal(s) : Signal #1: ECD1A.ch Signal #2: ECD2B.ch
 Acq On : 01 Oct 2020 16:26
 Operator : DD\AJ
 Sample : L4198-19
 Misc :
 ALS Vial : 21 Sample Multiplier: 1

Instrument :
 ECD_L
 ClientSampled :

Integration File signal 1: autoint1.e
 Integration File signal 2: autoint2.e
 Quant Time: Oct 02 03:39:18 2020
 Quant Method : Z:\pestpcbsrv\HPCHEM1\ECD_L\methods\PL092320.M
 Quant Title : GC Extractables
 QLast Update : Wed Sep 23 13:58:40 2020
 Response via : Initial Calibration
 Integrator: ChemStation

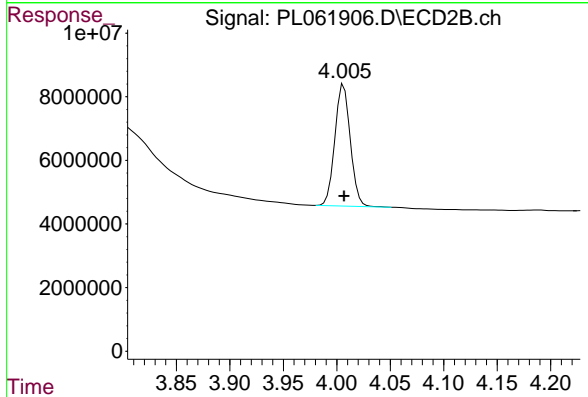
Volume Inj. : 1 µl
 Signal #1 Phase : ZB-MR2 Signal #2 Phase: ZB-MR1
 Signal #1 Info : 30M x 0.32mm x0.2 Signal #2 Info : 30M x 0.32mm x0.5µm



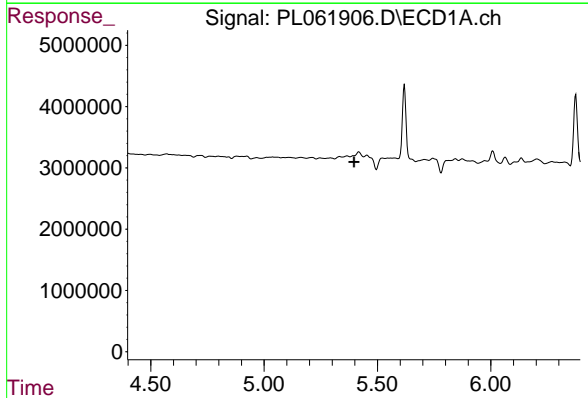


#1 Tetrachloro-m-xylene
 R.T.: 3.457 min
 Delta R.T.: -0.001 min
 Response: 25294296
 Conc: 14.83 ng/ml

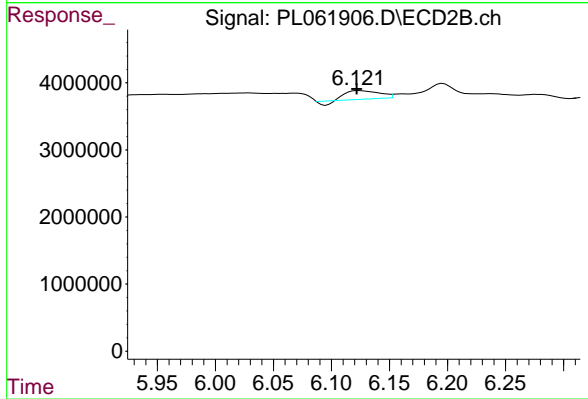
Instrument :
 ECD_L
 ClientSampleId :



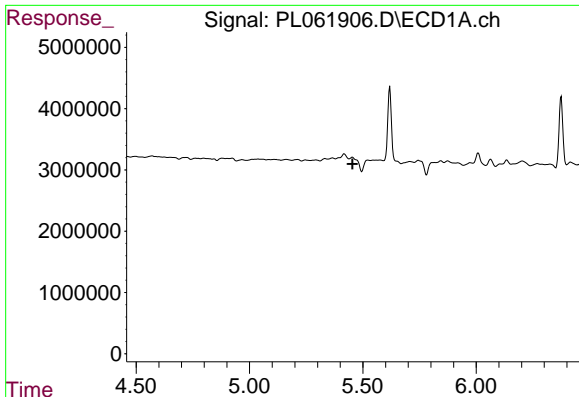
#1 Tetrachloro-m-xylene
 R.T.: 4.007 min
 Delta R.T.: 0.000 min
 Response: 38507502
 Conc: 14.11 ng/ml



#10 gamma-Chlordane
 R.T.: 0.000 min
 Exp R.T. : 5.397 min
 Response: 0
 Conc: N.D.



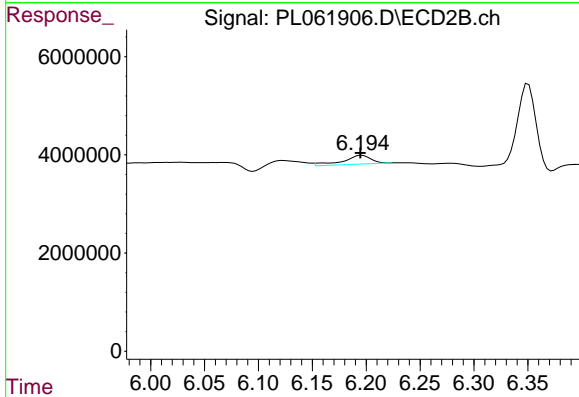
#10 gamma-Chlordane
 R.T.: 6.124 min
 Delta R.T.: 0.002 min
 Response: 2389283
 Conc: 0.81 ng/ml



#11 alpha-Chlordane

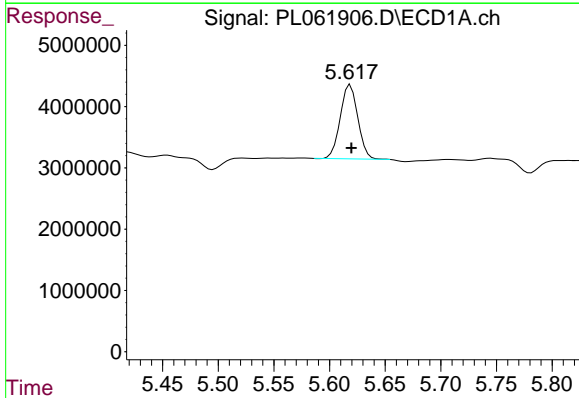
R.T.: 0.000 min
Exp R.T.: 5.455 min
Response: 0
Conc: N.D.

Instrument :
ECD_L
ClientSampled :



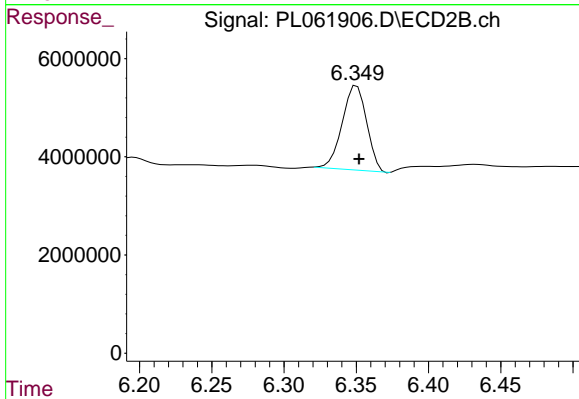
#11 alpha-Chlordane

R.T.: 6.196 min
Delta R.T.: 0.001 min
Response: 3204730
Conc: 1.07 ng/ml



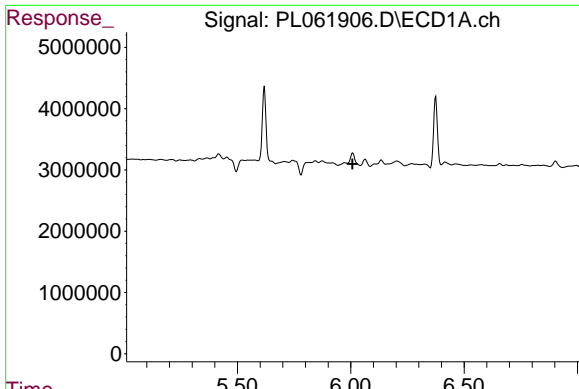
#12 4,4'-DDE

R.T.: 5.619 min
Delta R.T.: 0.000 min
Response: 13278363
Conc: 8.45 ng/ml



#12 4,4'-DDE

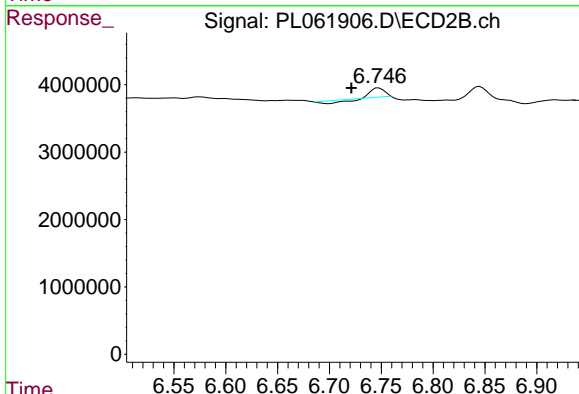
R.T.: 6.350 min
Delta R.T.: -0.002 min
Response: 20209420
Conc: 7.40 ng/ml



#14 Endrin

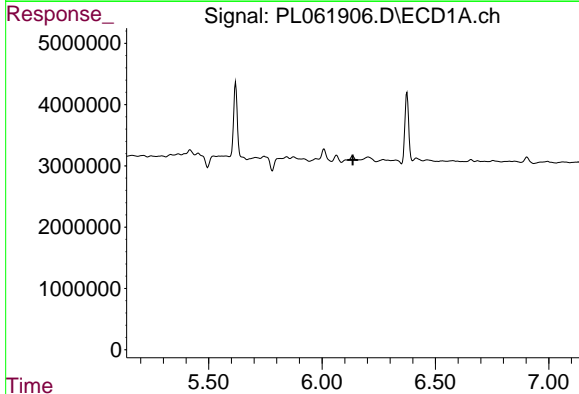
R.T.: 0.000 min
 Exp R.T.: 6.008 min
 Response: 0
 Conc: N.D.

Instrument :
 ECD_L
 ClientSampled :



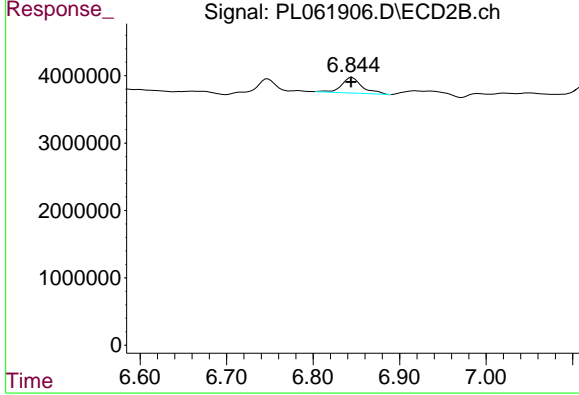
#14 Endrin

R.T.: 6.748 min
 Delta R.T.: 0.026 min
 Response: 771903
 Conc: 0.32 ng/ml



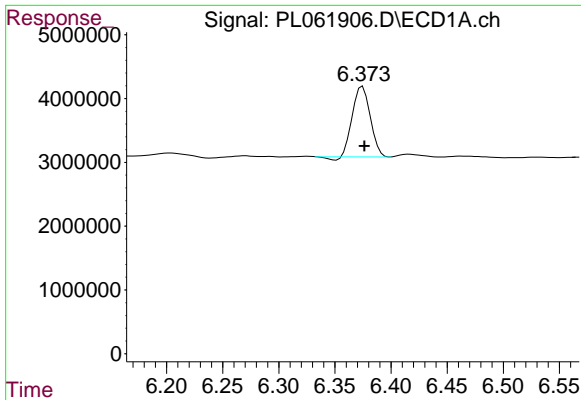
#16 4,4'-DDD

R.T.: 0.000 min
 Exp R.T.: 6.135 min
 Response: 0
 Conc: N.D.



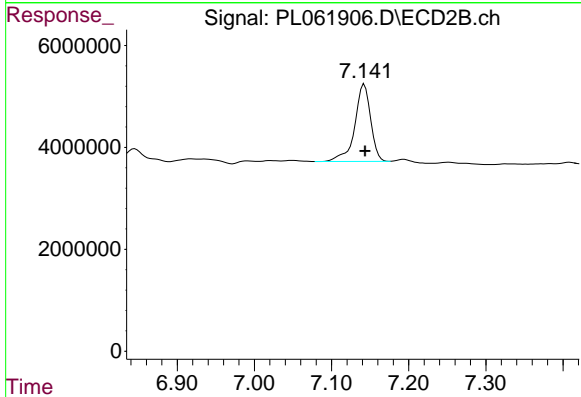
#16 4,4'-DDD

R.T.: 6.845 min
 Delta R.T.: 0.001 min
 Response: 3829010
 Conc: 1.72 ng/ml

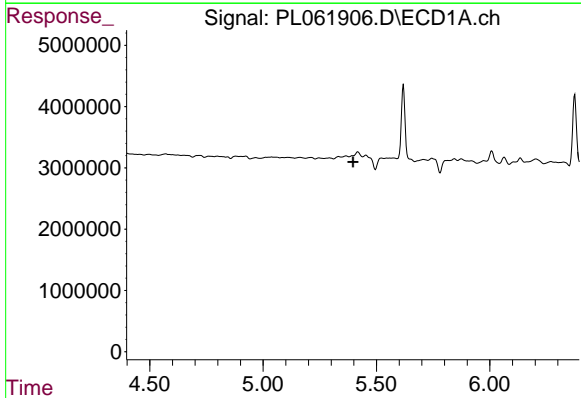


#17 4,4'-DDT
 R.T.: 6.375 min
 Delta R.T.: -0.002 min
 Response: 12034575
 Conc: 9.54 ng/ml

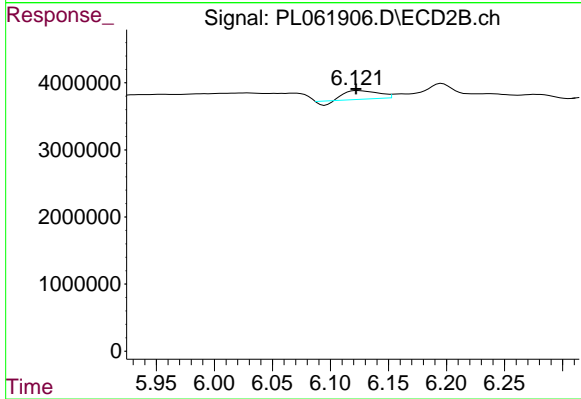
Instrument :
 ECD_L
 ClientSampled :



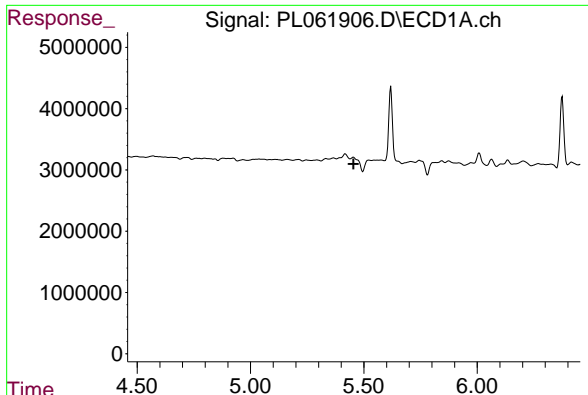
#17 4,4'-DDT
 R.T.: 7.142 min
 Delta R.T.: -0.001 min
 Response: 21695986
 Conc: 9.91 ng/ml



#25 Chlordane-3
 R.T.: 0.000 min
 Exp R.T. : 5.397 min
 Response: 0
 Conc: N.D.



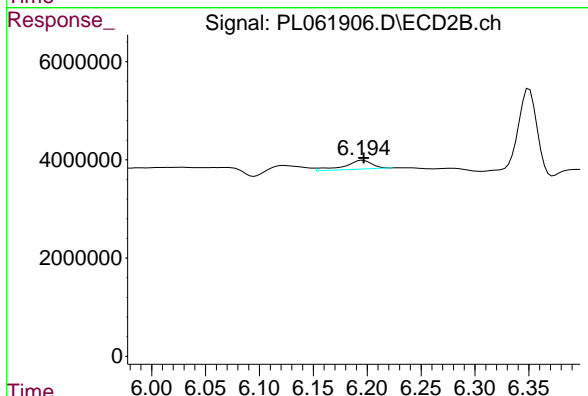
#25 Chlordane-3
 R.T.: 6.124 min
 Delta R.T.: 0.002 min
 Response: 2389283
 Conc: 6.52 ng/ml



#26 Chlordane-4

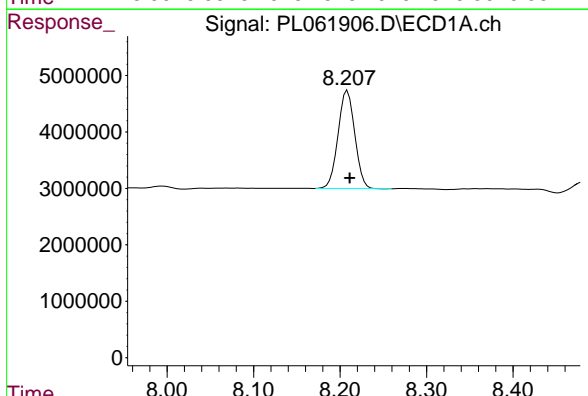
R.T.: 0.000 min
Exp R.T.: 5.455 min
Response: 0
Conc: N.D.

Instrument :
ECD_L
ClientSampled :



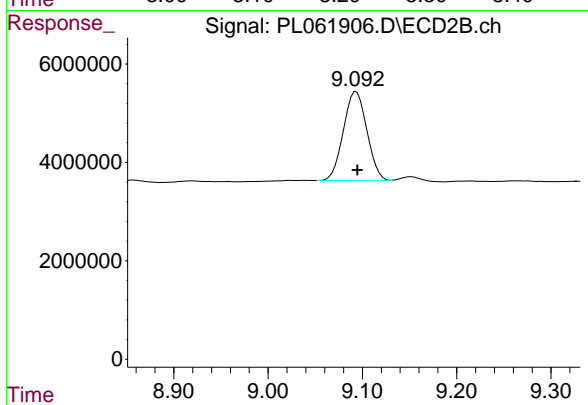
#26 Chlordane-4

R.T.: 6.196 min
Delta R.T.: 0.000 min
Response: 3204730
Conc: 7.14 ng/ml



#28 Decachlorobiphenyl

R.T.: 8.209 min
Delta R.T.: -0.003 min
Response: 23182459
Conc: 14.25 ng/ml



#28 Decachlorobiphenyl

R.T.: 9.094 min
Delta R.T.: -0.001 min
Response: 31299248
Conc: 14.22 ng/ml