

Data Path : Z:\pestpcbsrv\HPCHEM1\ECD\_L\Data\PL100125\  
 Data File : PL097469.D  
 Signal(s) : Signal #1: ECD1A.ch Signal #2: ECD2B.ch  
 Acq On : 01 Oct 2025 10:02  
 Operator : AR\AJ  
 Sample : PSTDCCC050  
 Misc :  
 ALS Vial : 4 Sample Multiplier: 1

Instrument :  
 ECD\_L  
 ClientSampleId :  
 PSTDCCC050

Integration File signal 1: autoint1.e  
 Integration File signal 2: autoint2.e  
 Quant Time: Oct 03 04:02:21 2025  
 Quant Method : Z:\pestpcbsrv\HPCHEM1\ECD\_L\methods\PL092025.M  
 Quant Title : GC Extractables  
 QLast Update : Fri Sep 19 05:40:25 2025  
 Response via : Initial Calibration  
 Integrator: ChemStation

Volume Inj. : 1 µl  
 Signal #1 Phase : ZB-MR1 Signal #2 Phase: ZB-MR2  
 Signal #1 Info : 30M x 0.32mm x0.5 Signal #2 Info : 30M x 0.32mm x0.25µm

	Compound	RT#1	RT#2	Resp#1	Resp#2	ng/ml	ng/ml
-----							
System Monitoring Compounds							
1)	SA Tetrachlo...	3.526	2.822	206.6E6	281.5E6	45.627	42.806
28)	SA Decachlor...	9.000	7.982	155.0E6	228.1E6	47.368	40.082
Target Compounds							
2)	A alpha-BHC	3.972	3.327	349.5E6	478.5E6	50.014	48.058
3)	MA gamma-BHC...	4.300	3.659	324.9E6	439.5E6	49.134	47.187
4)	MA Heptachlor	4.891	4.006	320.7E6	426.1E6	48.079	45.789
5)	MB Aldrin	5.230	4.288	313.4E6	412.8E6	49.482	47.559
6)	B beta-BHC	4.488	3.955	134.6E6	180.7E6	49.383	44.487
7)	B delta-BHC	0.000	4.187	0	426.7E6	N.D.	46.422 #
8)	B Heptachlo...	5.650	4.790	340.8E6	383.1E6	59.301	48.306
9)	A Endosulfan I	6.032	5.161	272.5E6	330.8E6	52.592	43.048
10)	B gamma-Chl...	5.904	5.042	384.2E6	392.6E6	67.950	44.956 #
11)	B alpha-Chl...	5.984	5.106	299.6E6	386.6E6	52.748	46.576
12)	B 4,4'-DDE	6.155	5.295	251.0E6	356.8E6	52.672	46.428
13)	MA Dieldrin	6.304	5.426	283.6E6	404.5E6	51.736	49.467
14)	MA Endrin	6.531	5.701	245.7E6	411.4E6	53.251	54.781
15)	B Endosulfa...	6.744	5.992	284.9E6	334.6E6	57.926	47.062
16)	A 4,4'-DDD	6.664	5.847	247.8E6	309.9E6	65.725	48.060 #
17)	MA 4,4'-DDT	6.978	6.100	216.1E6	289.9E6	51.124	41.893
18)	B Endrin al...	6.873	6.170	193.8E6	246.1E6	62.871	46.106 #
19)	B Endosulfa...	7.107	6.394	215.9E6	318.1E6	52.874	46.443
20)	A Methoxychlor	7.451	6.672	101.0E6	155.8E6	48.421	41.339
21)	B Endrin ke...	7.586	6.898	231.9E6	396.9E6	54.626	52.706
22)	Mirex	8.064	7.088	161.1E6	245.4E6	45.369	41.045
24)	Chlordane-2	5.230f	4.429	313.4E6	14351417	1411.950	48.862 #
25)	Chlordane-3	5.904	5.042	384.2E6	392.6E6	470.987	439.083
26)	Chlordane-4	5.984	5.106	299.6E6	386.6E6	299.534	507.663 #
27)	Chlordane-5	0.000	5.992	0	334.6E6	N.D.	1122.208 #

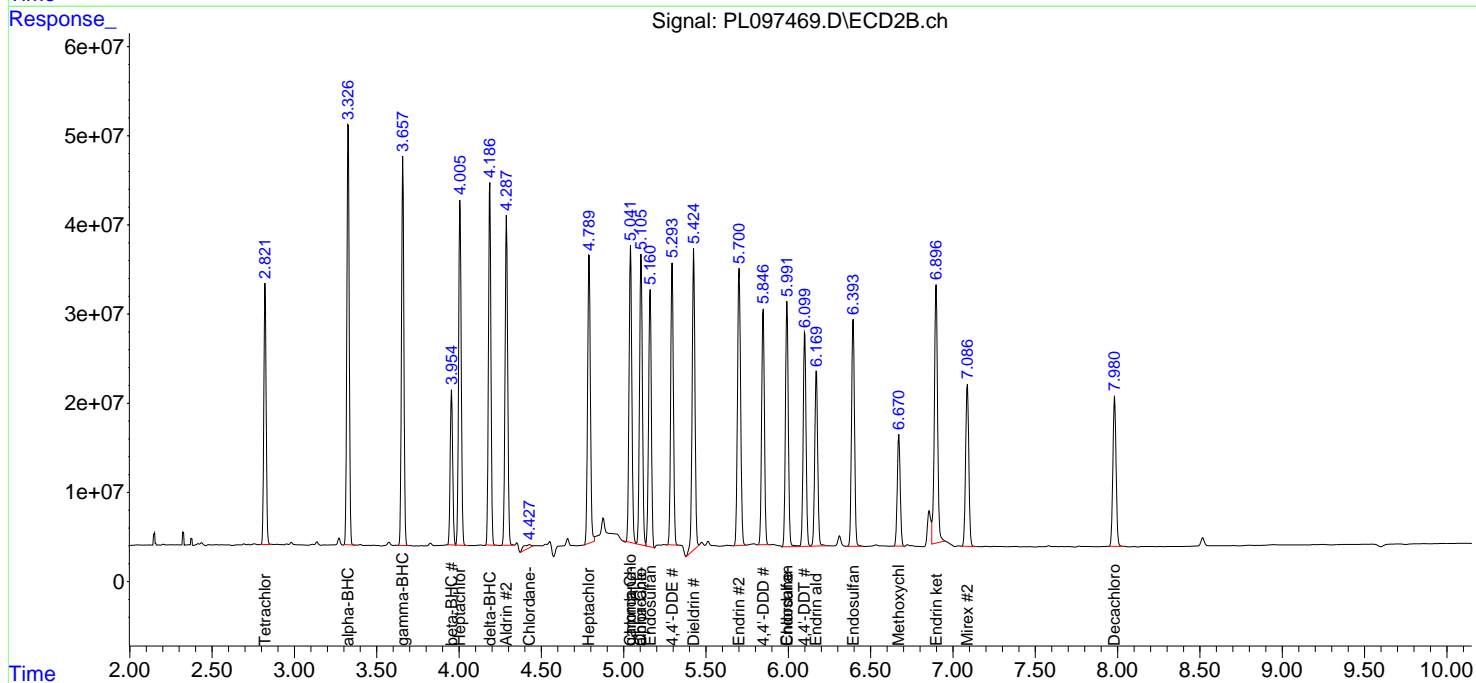
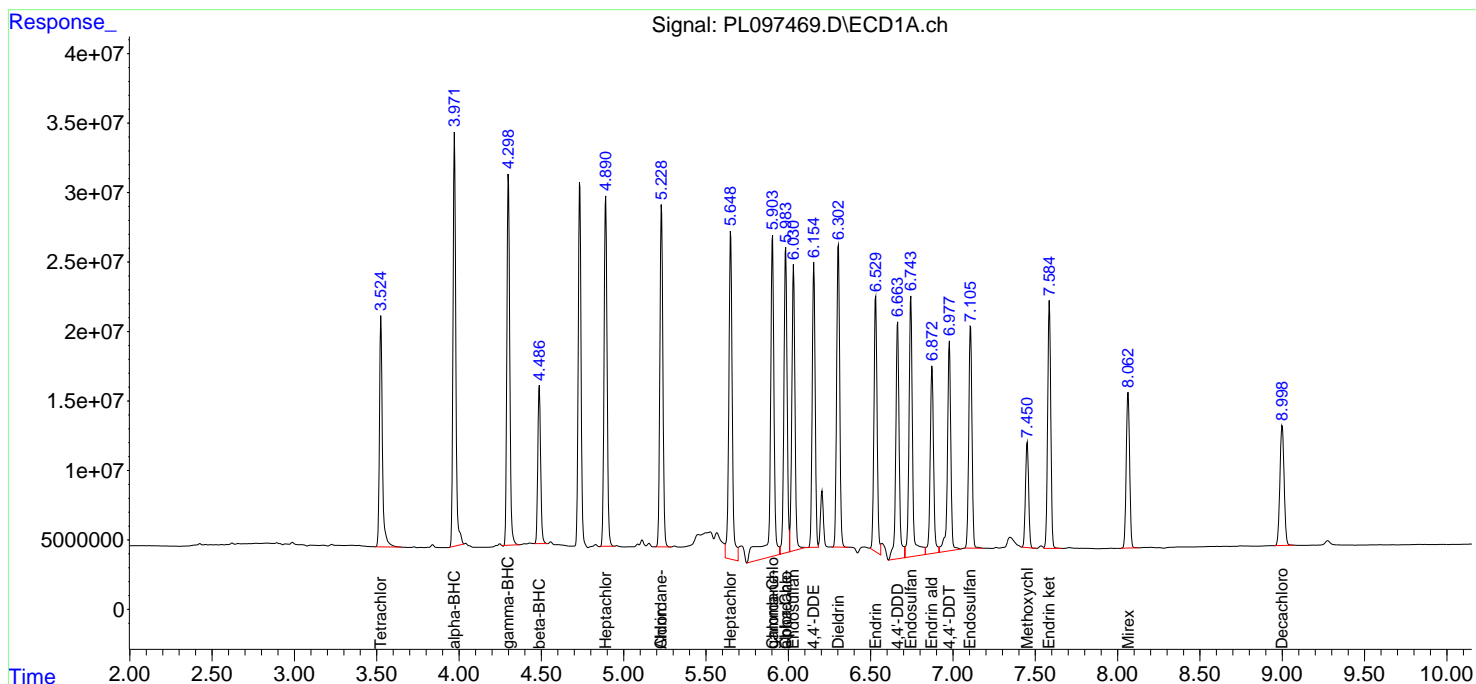
(f)=RT Delta > 1/2 Window (#)=Amounts differ by > 25% (m)=manual int.

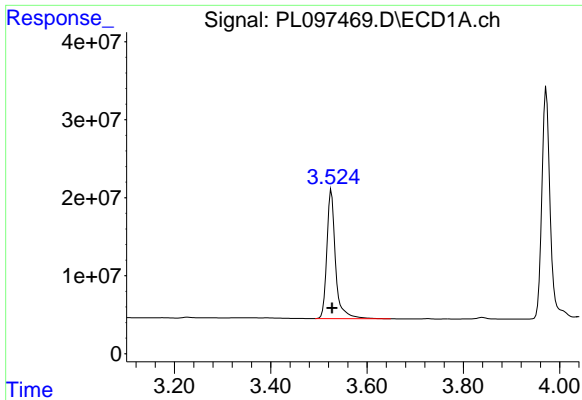
Data Path : Z:\pestpcbsrv\HPCHEM1\ECD\_L\Data\PL100125\  
 Data File : PL097469.D  
 Signal(s) : Signal #1: ECD1A.ch Signal #2: ECD2B.ch  
 Acq On : 01 Oct 2025 10:02  
 Operator : AR\AJ  
 Sample : PSTDCCC050  
 Misc :  
 ALS Vial : 4 Sample Multiplier: 1

Instrument :  
 ECD\_L  
 ClientSampleId :  
 PSTDCCC050

Integration File signal 1: autoint1.e  
 Integration File signal 2: autoint2.e  
 Quant Time: Oct 03 04:02:21 2025  
 Quant Method : Z:\pestpcbsrv\HPCHEM1\ECD\_L\methods\PL092025.M  
 Quant Title : GC Extractables  
 QLast Update : Fri Sep 19 05:40:25 2025  
 Response via : Initial Calibration  
 Integrator: ChemStation

Volume Inj. : 1 µl  
 Signal #1 Phase : ZB-MR1 Signal #2 Phase: ZB-MR2  
 Signal #1 Info : 30M x 0.32mm x0.5 Signal #2 Info : 30M x 0.32mm x0.25µm

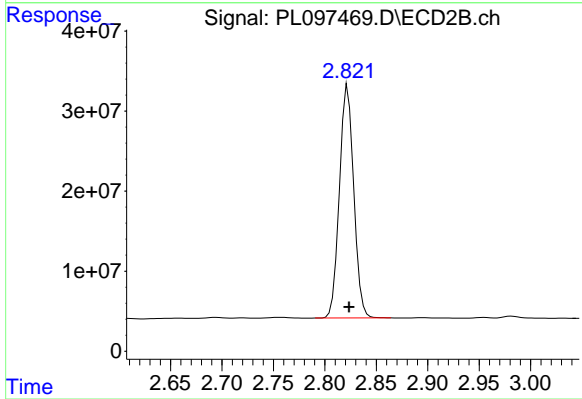




#1 Tetrachloro-m-xylene

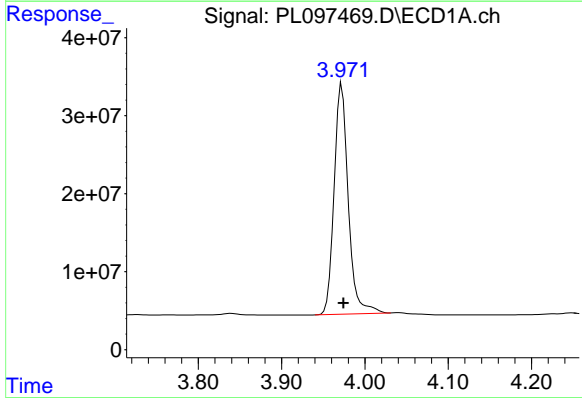
R.T.: 3.526 min  
 Delta R.T.: -0.001 min  
 Response: 206561389  
 Conc: 45.63 ng/ml

Instrument :  
 ECD\_L  
 ClientSampleId :  
 PSTDCCC050



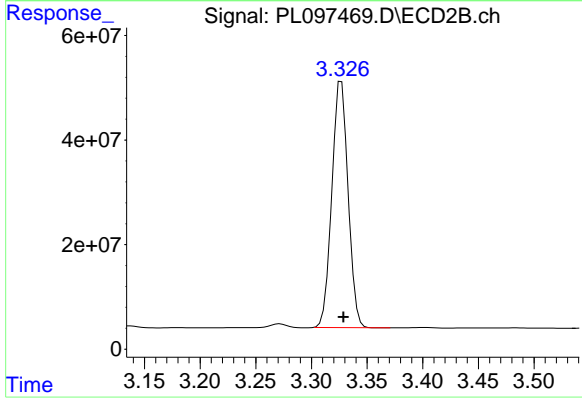
#1 Tetrachloro-m-xylene

R.T.: 2.822 min  
 Delta R.T.: -0.001 min  
 Response: 281476357  
 Conc: 42.81 ng/ml



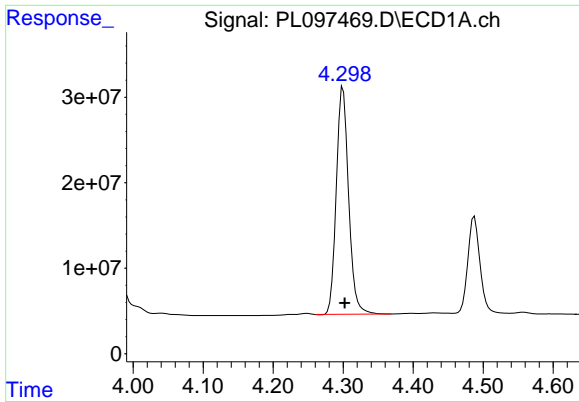
#2 alpha-BHC

R.T.: 3.972 min  
 Delta R.T.: -0.002 min  
 Response: 349471395  
 Conc: 50.01 ng/ml



#2 alpha-BHC

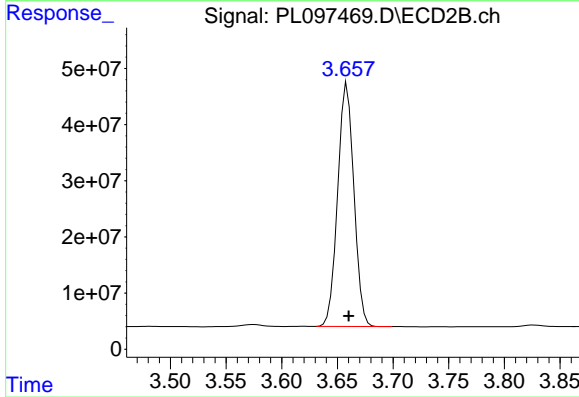
R.T.: 3.327 min  
 Delta R.T.: -0.002 min  
 Response: 478544754  
 Conc: 48.06 ng/ml



#3 gamma-BHC (Lindane)

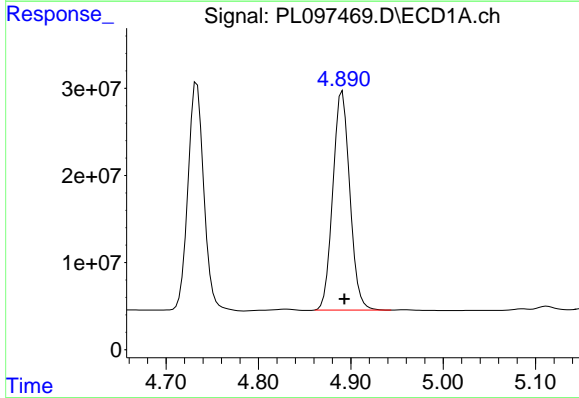
R.T.: 4.300 min  
 Delta R.T.: -0.002 min  
 Response: 324930734  
 Conc: 49.13 ng/ml

Instrument :  
 ECD\_L  
 ClientSampleId :  
 PSTDCCC050



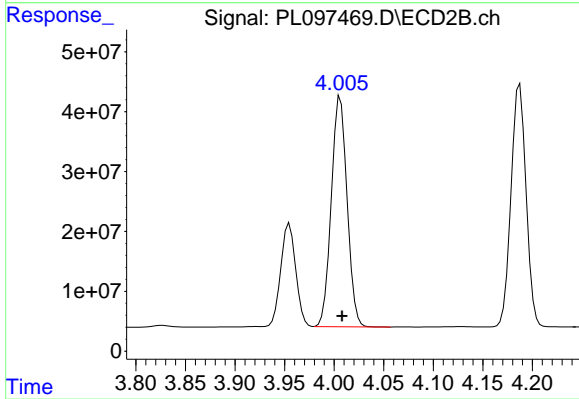
#3 gamma-BHC (Lindane)

R.T.: 3.659 min  
 Delta R.T.: -0.001 min  
 Response: 439529469  
 Conc: 47.19 ng/ml



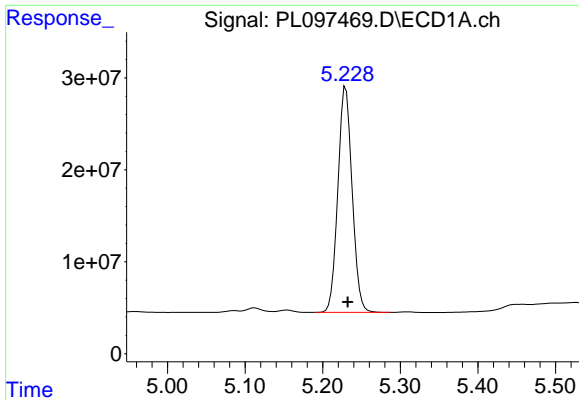
#4 Heptachlor

R.T.: 4.891 min  
 Delta R.T.: -0.002 min  
 Response: 320688541  
 Conc: 48.08 ng/ml



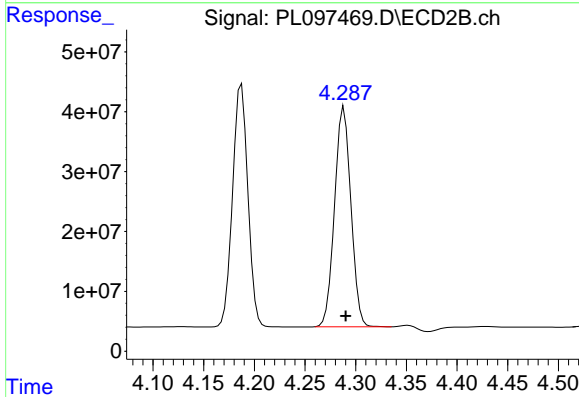
#4 Heptachlor

R.T.: 4.006 min  
 Delta R.T.: -0.002 min  
 Response: 426077437  
 Conc: 45.79 ng/ml

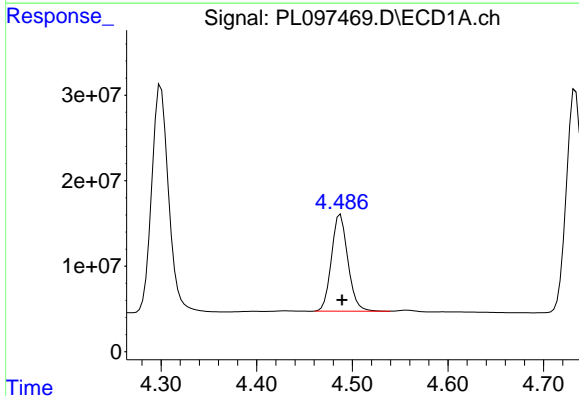


#5 Aldrin  
 R.T.: 5.230 min  
 Delta R.T.: -0.002 min  
 Response: 313415544  
 Conc: 49.48 ng/ml

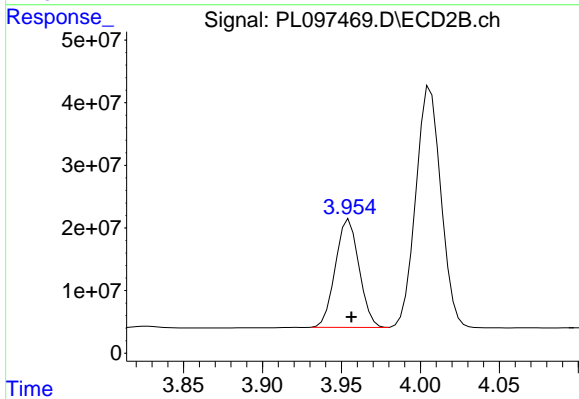
Instrument :  
 ECD\_L  
 ClientSampleId :  
 PSTDCCC050



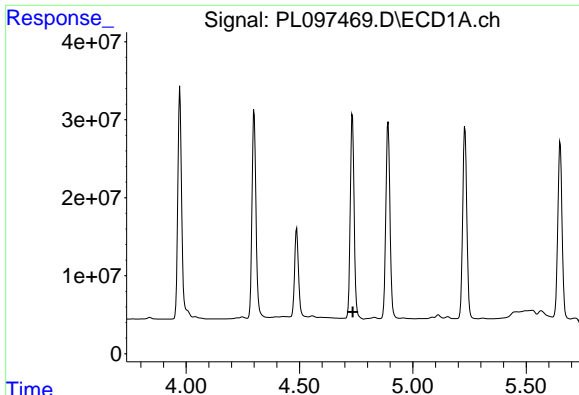
#5 Aldrin  
 R.T.: 4.288 min  
 Delta R.T.: -0.002 min  
 Response: 412775915  
 Conc: 47.56 ng/ml



#6 beta-BHC  
 R.T.: 4.488 min  
 Delta R.T.: -0.002 min  
 Response: 134626681  
 Conc: 49.38 ng/ml



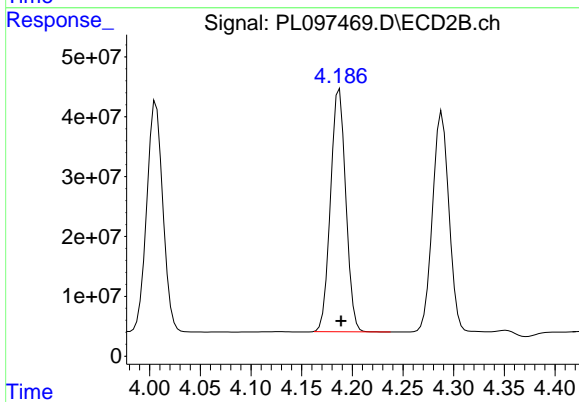
#6 beta-BHC  
 R.T.: 3.955 min  
 Delta R.T.: -0.001 min  
 Response: 180708049  
 Conc: 44.49 ng/ml



#7 delta-BHC

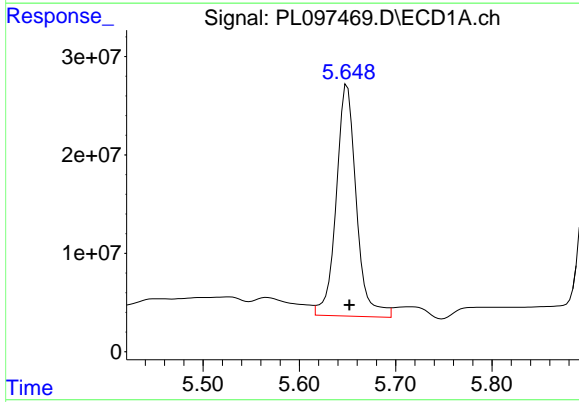
R.T.: 0.000 min  
 Exp R.T.: 4.735 min  
 Response: 0  
 Conc: N.D.

Instrument :  
 ECD\_L  
 ClientSampleId :  
 PSTDCCC050



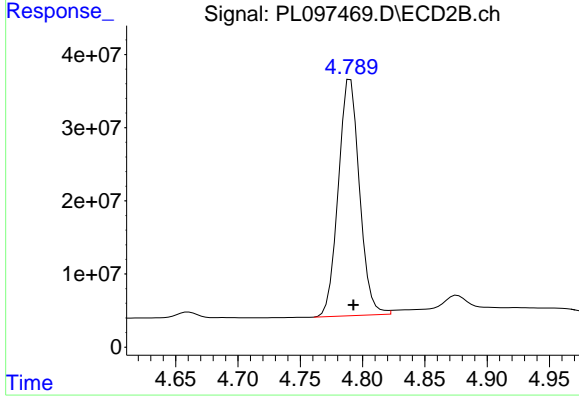
#7 delta-BHC

R.T.: 4.187 min  
 Delta R.T.: -0.002 min  
 Response: 426724106  
 Conc: 46.42 ng/ml



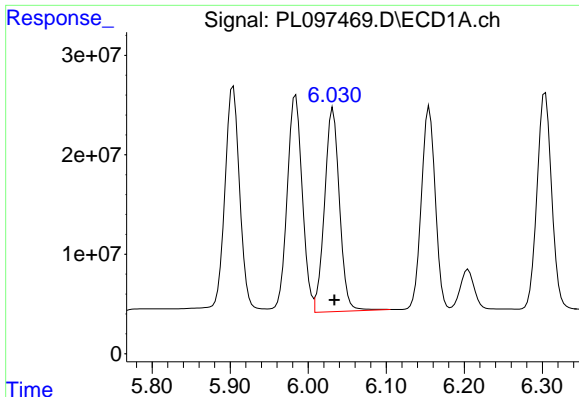
#8 Heptachlor epoxide

R.T.: 5.650 min  
 Delta R.T.: -0.002 min  
 Response: 340798289  
 Conc: 59.30 ng/ml



#8 Heptachlor epoxide

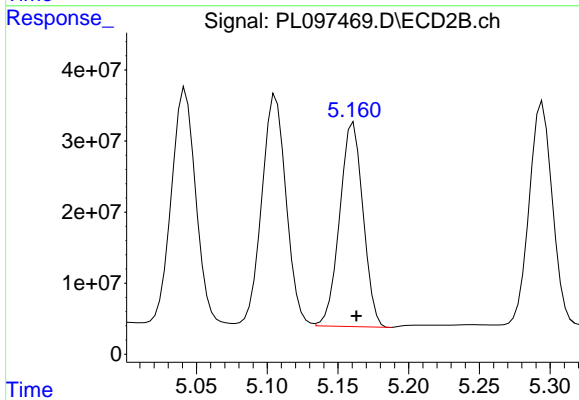
R.T.: 4.790 min  
 Delta R.T.: -0.002 min  
 Response: 383137259  
 Conc: 48.31 ng/ml



#9 Endosulfan I

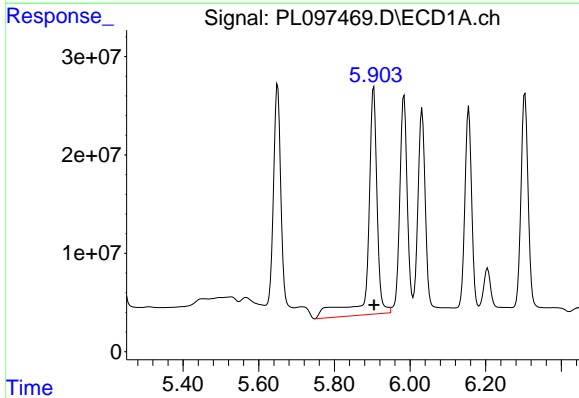
R.T.: 6.032 min  
 Delta R.T.: -0.002 min  
 Response: 272495837  
 Conc: 52.59 ng/ml

Instrument :  
 ECD\_L  
 ClientSampleId :  
 PSTDCCC050



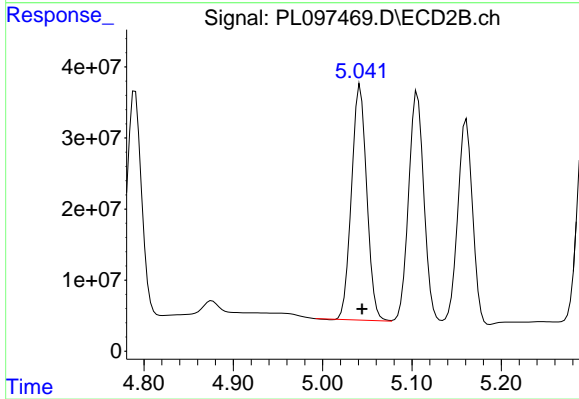
#9 Endosulfan I

R.T.: 5.161 min  
 Delta R.T.: -0.002 min  
 Response: 330763776  
 Conc: 43.05 ng/ml



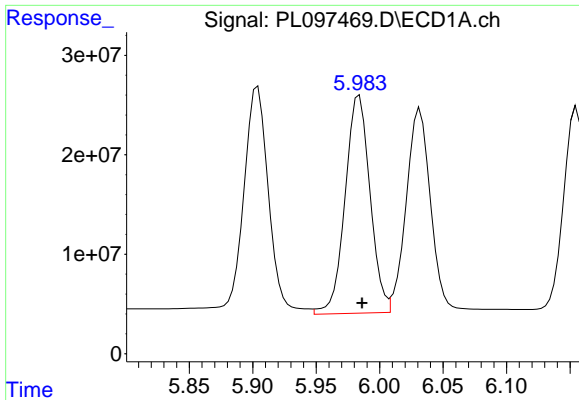
#10 gamma-Chlordane

R.T.: 5.904 min  
 Delta R.T.: -0.001 min  
 Response: 384155286  
 Conc: 67.95 ng/ml



#10 gamma-Chlordane

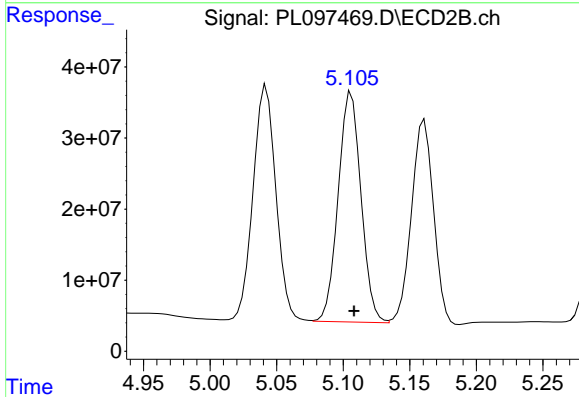
R.T.: 5.042 min  
 Delta R.T.: -0.002 min  
 Response: 392636078  
 Conc: 44.96 ng/ml



#11 alpha-Chlordane

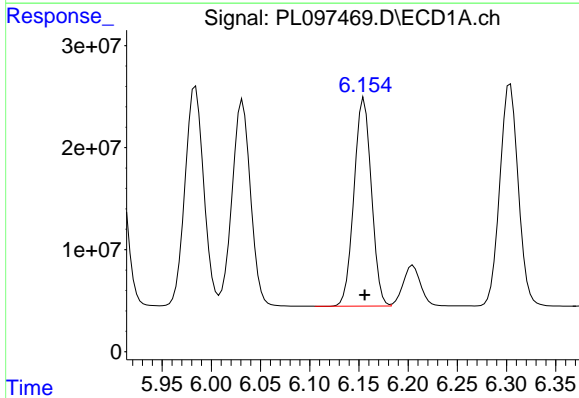
R.T.: 5.984 min  
 Delta R.T.: -0.002 min  
 Response: 299601248  
 Conc: 52.75 ng/ml

Instrument :  
 ECD\_L  
 ClientSampleId :  
 PSTDCCC050



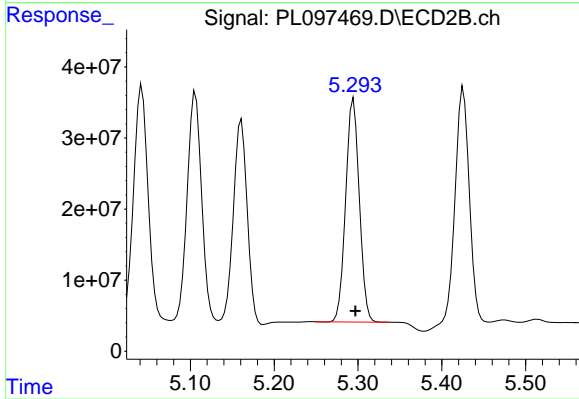
#11 alpha-Chlordane

R.T.: 5.106 min  
 Delta R.T.: -0.002 min  
 Response: 386607776  
 Conc: 46.58 ng/ml



#12 4,4'-DDE

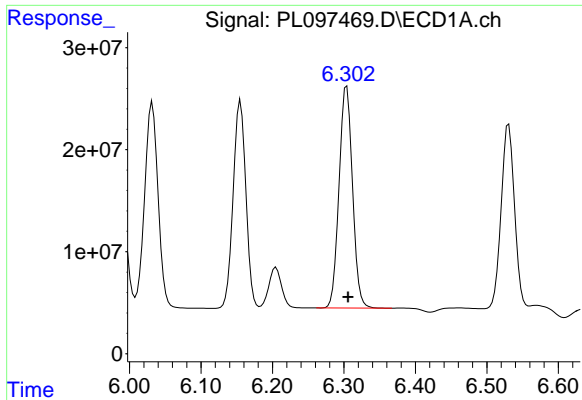
R.T.: 6.155 min  
 Delta R.T.: 0.000 min  
 Response: 250966181  
 Conc: 52.67 ng/ml



#12 4,4'-DDE

R.T.: 5.295 min  
 Delta R.T.: -0.002 min  
 Response: 356785519  
 Conc: 46.43 ng/ml

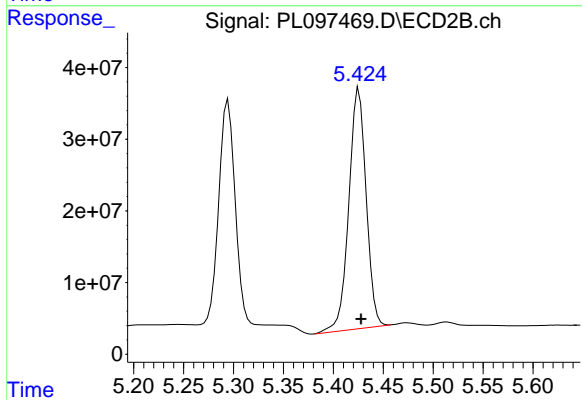




#13 Dieldrin

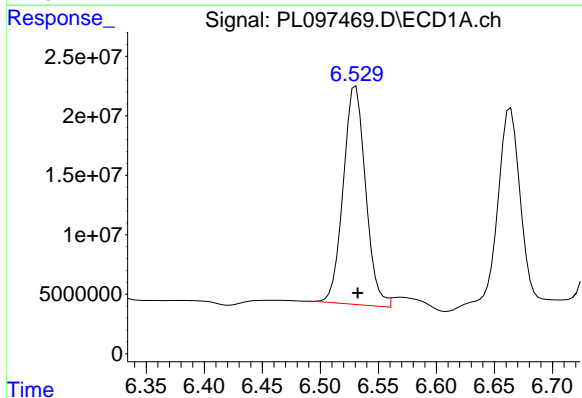
R.T.: 6.304 min  
 Delta R.T.: -0.002 min  
 Response: 283625395  
 Conc: 51.74 ng/ml

Instrument :  
 ECD\_L  
 ClientSampleId :  
 PSTDCCC050



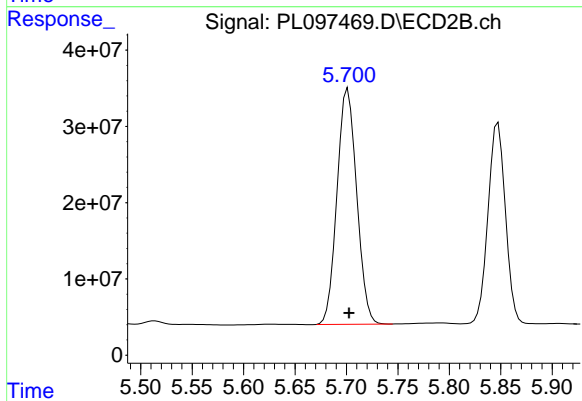
#13 Dieldrin

R.T.: 5.426 min  
 Delta R.T.: -0.002 min  
 Response: 404484290  
 Conc: 49.47 ng/ml



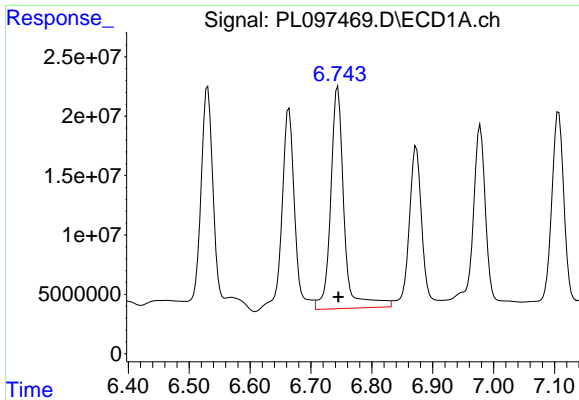
#14 Endrin

R.T.: 6.531 min  
 Delta R.T.: -0.002 min  
 Response: 245655095  
 Conc: 53.25 ng/ml



#14 Endrin

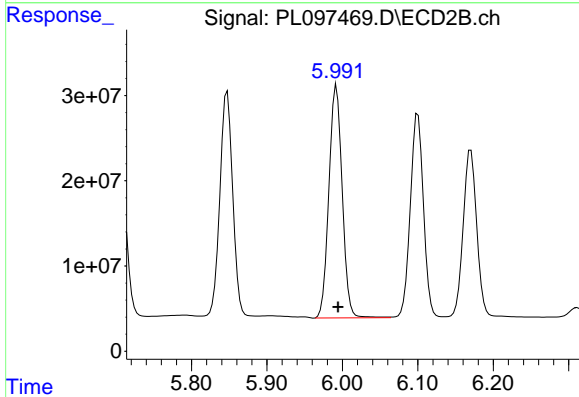
R.T.: 5.701 min  
 Delta R.T.: -0.001 min  
 Response: 411435228  
 Conc: 54.78 ng/ml



#15 Endosulfan II

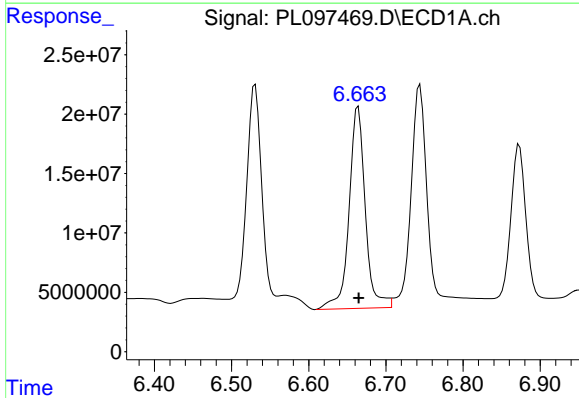
R.T.: 6.744 min  
 Delta R.T.: -0.001 min  
 Response: 284898566  
 Conc: 57.93 ng/ml

Instrument :  
 ECD\_L  
 ClientSampleId :  
 PSTDCCC050



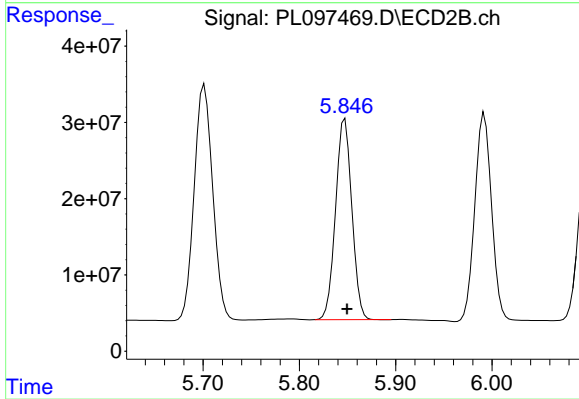
#15 Endosulfan II

R.T.: 5.992 min  
 Delta R.T.: -0.002 min  
 Response: 334578201  
 Conc: 47.06 ng/ml



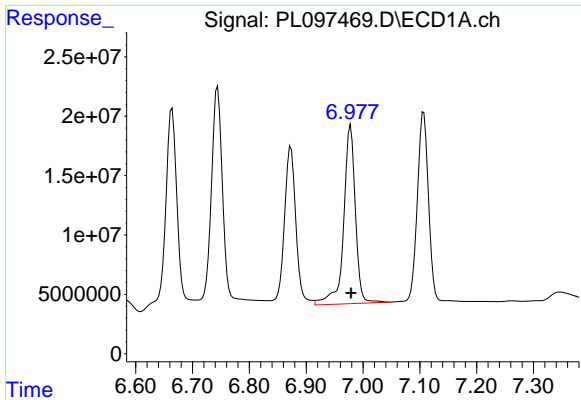
#16 4,4'-DDD

R.T.: 6.664 min  
 Delta R.T.: 0.000 min  
 Response: 247818326  
 Conc: 65.72 ng/ml



#16 4,4'-DDD

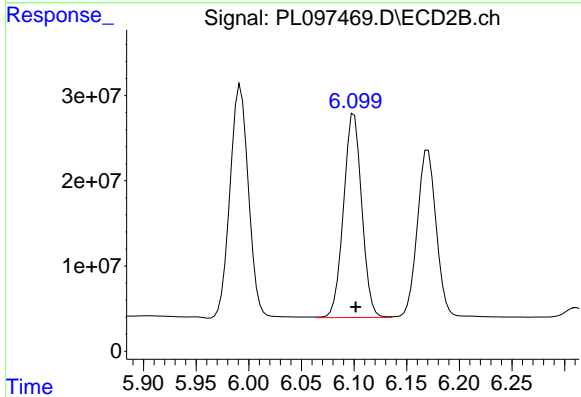
R.T.: 5.847 min  
 Delta R.T.: -0.002 min  
 Response: 309944235  
 Conc: 48.06 ng/ml



#17 4,4'-DDT

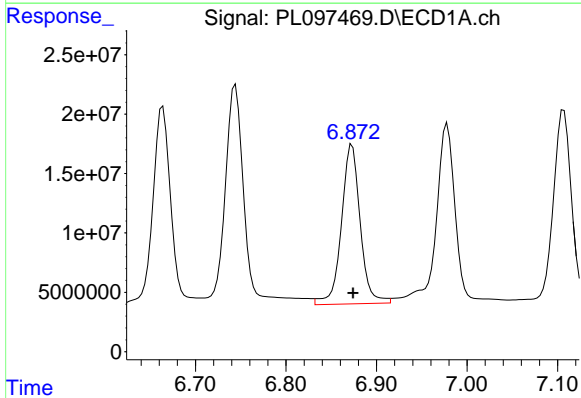
R.T.: 6.978 min  
 Delta R.T.: 0.000 min  
 Response: 216110095  
 Conc: 51.12 ng/ml

Instrument :  
 ECD\_L  
 ClientSampleId :  
 PSTDCCC050



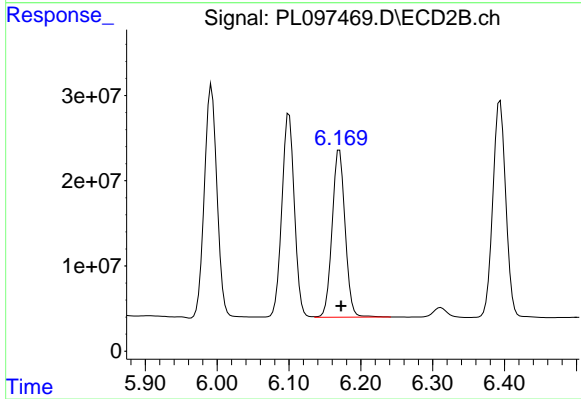
#17 4,4'-DDT

R.T.: 6.100 min  
 Delta R.T.: -0.001 min  
 Response: 289921207  
 Conc: 41.89 ng/ml



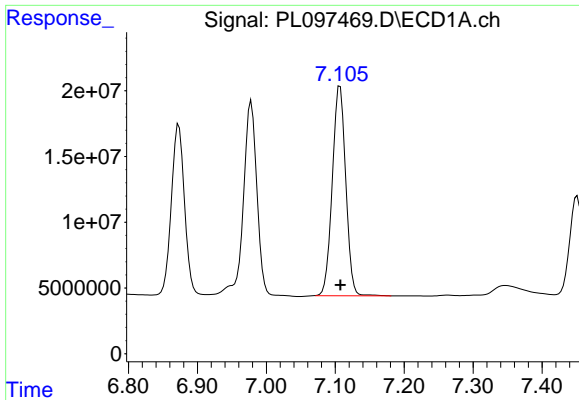
#18 Endrin aldehyde

R.T.: 6.873 min  
 Delta R.T.: -0.001 min  
 Response: 193819173  
 Conc: 62.87 ng/ml



#18 Endrin aldehyde

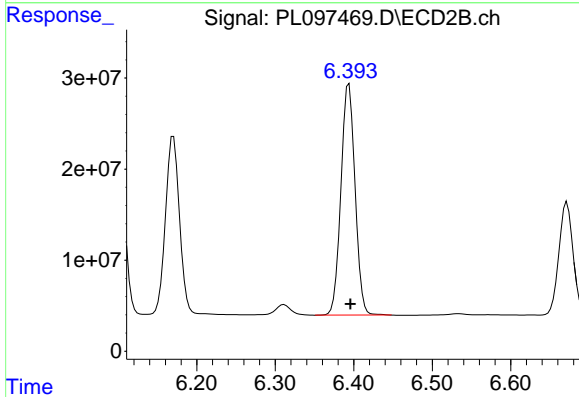
R.T.: 6.170 min  
 Delta R.T.: -0.002 min  
 Response: 246087791  
 Conc: 46.11 ng/ml



#19 Endosulfan Sulfate

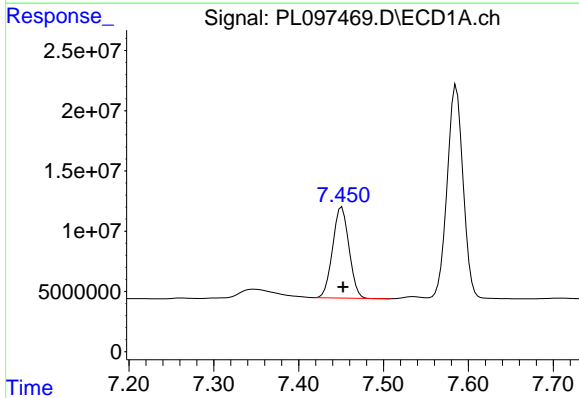
R.T.: 7.107 min  
 Delta R.T.: 0.000 min  
 Response: 215869353  
 Conc: 52.87 ng/ml

Instrument :  
 ECD\_L  
 ClientSampleId :  
 PSTDCCC050



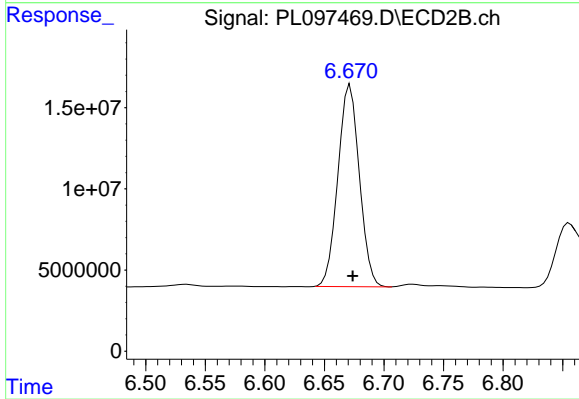
#19 Endosulfan Sulfate

R.T.: 6.394 min  
 Delta R.T.: -0.002 min  
 Response: 318121687  
 Conc: 46.44 ng/ml



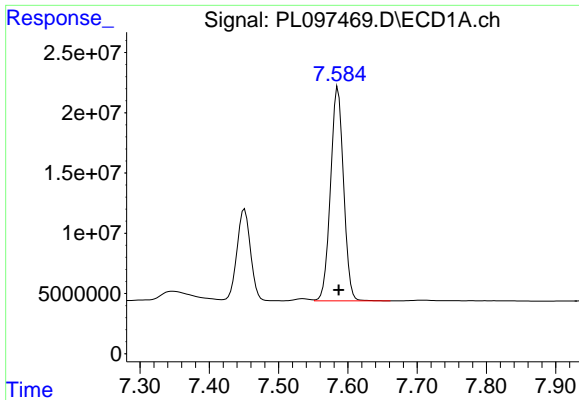
#20 Methoxychlor

R.T.: 7.451 min  
 Delta R.T.: -0.001 min  
 Response: 100976987  
 Conc: 48.42 ng/ml



#20 Methoxychlor

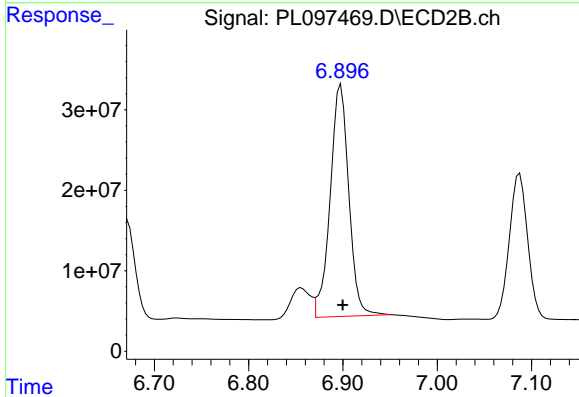
R.T.: 6.672 min  
 Delta R.T.: -0.002 min  
 Response: 155825717  
 Conc: 41.34 ng/ml



#21 Endrin ketone

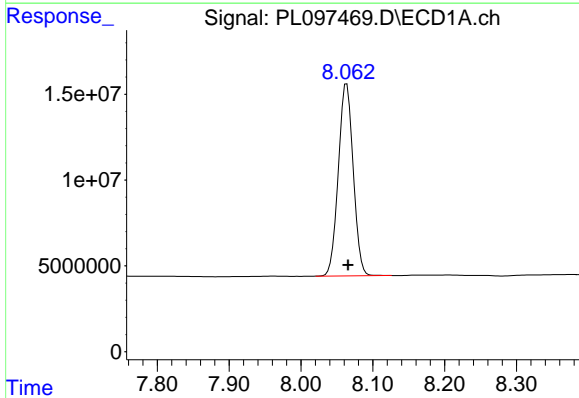
R.T.: 7.586 min  
 Delta R.T.: -0.001 min  
 Response: 231853158  
 Conc: 54.63 ng/ml

Instrument :  
 ECD\_L  
 ClientSampleId :  
 PSTDCCC050



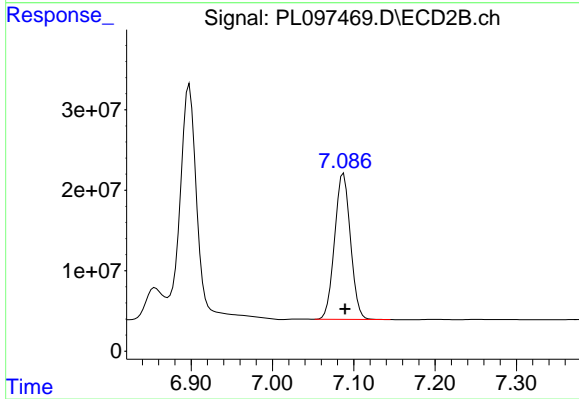
#21 Endrin ketone

R.T.: 6.898 min  
 Delta R.T.: -0.002 min  
 Response: 396891266  
 Conc: 52.71 ng/ml



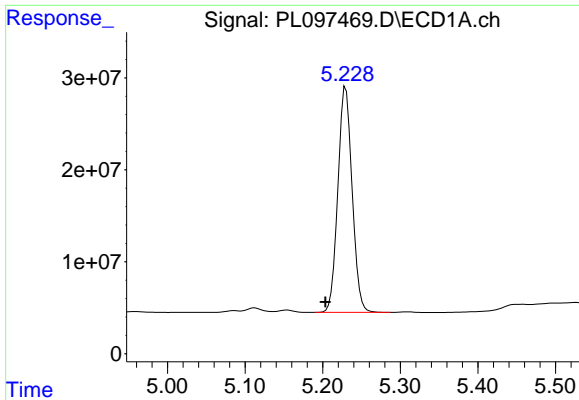
#22 Mirex

R.T.: 8.064 min  
 Delta R.T.: -0.002 min  
 Response: 161074197  
 Conc: 45.37 ng/ml



#22 Mirex

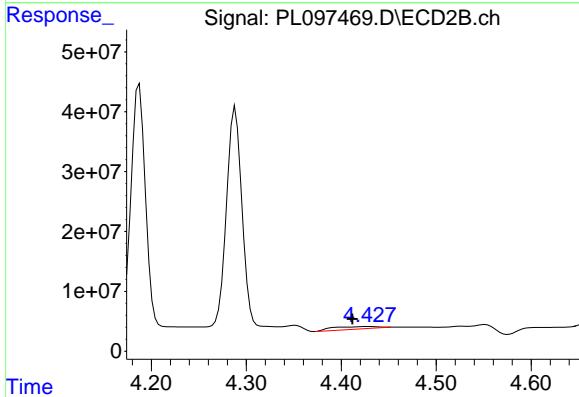
R.T.: 7.088 min  
 Delta R.T.: -0.002 min  
 Response: 245394626  
 Conc: 41.04 ng/ml



#24 Chlordane-2

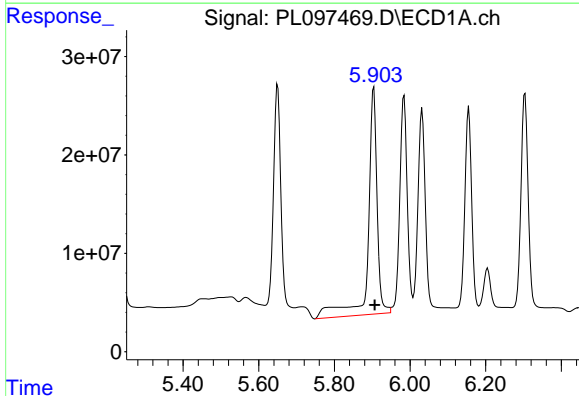
R.T.: 5.230 min  
 Delta R.T.: 0.026 min  
 Response: 313415544  
 Conc: 1411.95 ng/ml

Instrument :  
 ECD\_L  
 ClientSampleId :  
 PSTDCCC050



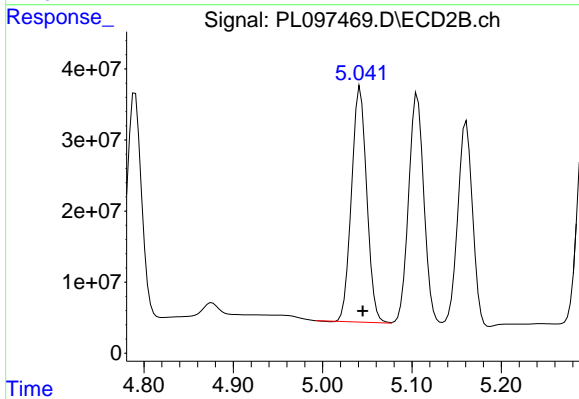
#24 Chlordane-2

R.T.: 4.429 min  
 Delta R.T.: 0.017 min  
 Response: 14351417  
 Conc: 48.86 ng/ml



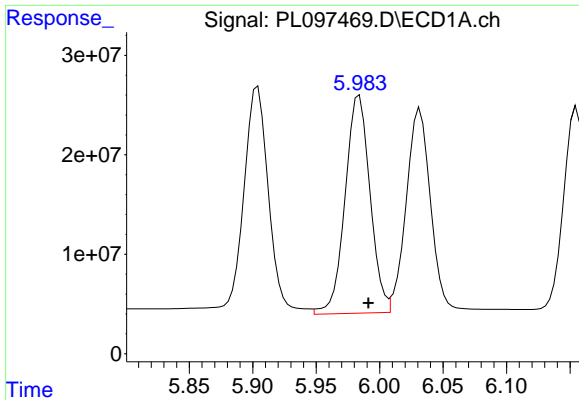
#25 Chlordane-3

R.T.: 5.904 min  
 Delta R.T.: -0.003 min  
 Response: 384155286  
 Conc: 470.99 ng/ml



#25 Chlordane-3

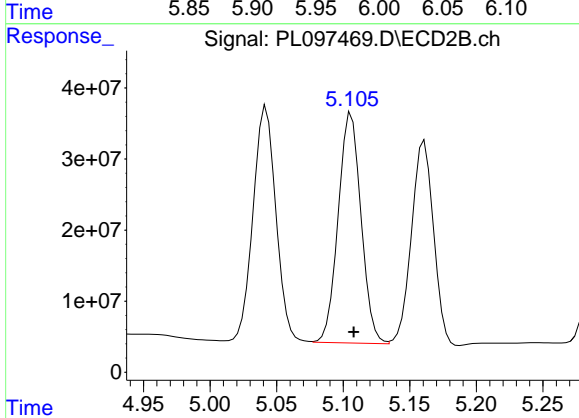
R.T.: 5.042 min  
 Delta R.T.: -0.003 min  
 Response: 392636078  
 Conc: 439.08 ng/ml



#26 Chlordane-4

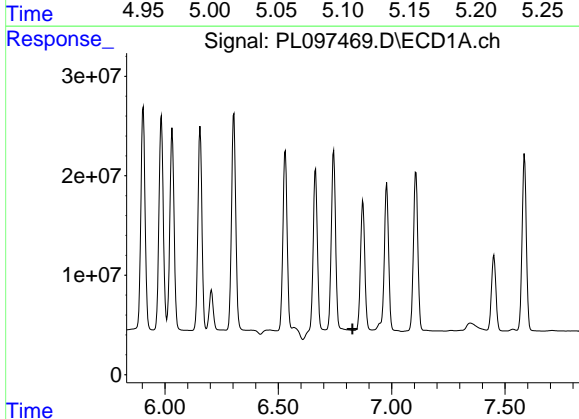
R.T.: 5.984 min  
 Delta R.T.: -0.007 min  
 Response: 299601248  
 Conc: 299.53 ng/ml

Instrument :  
 ECD\_L  
 ClientSampleId :  
 PSTDCCC050



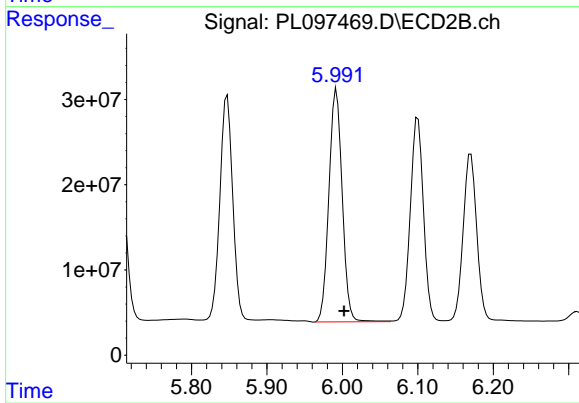
#26 Chlordane-4

R.T.: 5.106 min  
 Delta R.T.: -0.002 min  
 Response: 386607776  
 Conc: 507.66 ng/ml



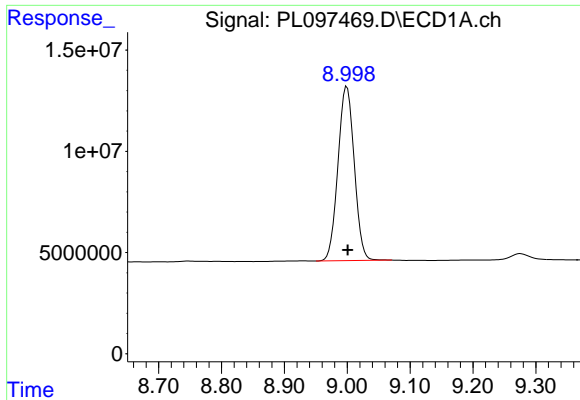
#27 Chlordane-5

R.T.: 0.000 min  
 Exp R.T. : 6.828 min  
 Response: 0  
 Conc: N.D.



#27 Chlordane-5

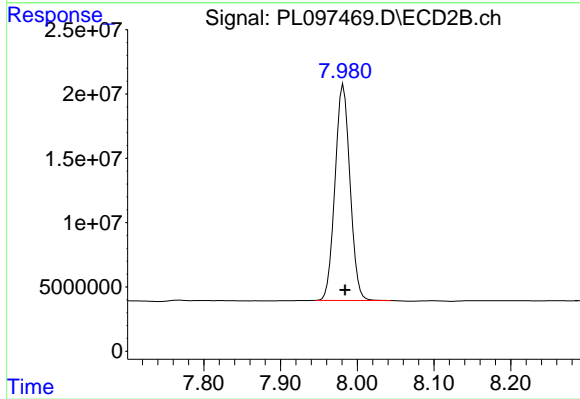
R.T.: 5.992 min  
 Delta R.T.: -0.010 min  
 Response: 334578201  
 Conc: 1122.21 ng/ml



#28 Decachlorobiphenyl

R.T.: 9.000 min  
Delta R.T.: -0.001 min  
Response: 154997608  
Conc: 47.37 ng/ml

Instrument :  
ECD\_L  
ClientSampleId :  
PSTDCCC050



#28 Decachlorobiphenyl

R.T.: 7.982 min  
Delta R.T.: -0.002 min  
Response: 228131287  
Conc: 40.08 ng/ml