

Data Path : Z:\pestpcbsrv\HPCHEM1\ECD\_L\Data\PL100219\  
 Data File : PL053021.D  
 Signal(s) : Signal #1: ECD1A.ch Signal #2: ECD2B.ch  
 Acq On : 02 Oct 2019 22:32  
 Operator : SG\AJ  
 Sample : K5095-03  
 Misc :  
 ALS Vial : 40 Sample Multiplier: 1

Instrument :  
 ECD\_L  
 ClientSampleId :

Integration File signal 1: autoint1.e  
 Integration File signal 2: autoint2.e  
 Quant Time: Oct 03 01:16:22 2019  
 Quant Method : Z:\pestpcbsrv\HPCHEM1\ECD\_L\methods\PL092919.M  
 Quant Title : GC Extractables  
 QLast Update : Mon Sep 30 08:44:08 2019  
 Response via : Initial Calibration  
 Integrator: ChemStation

Volume Inj. : 1 µl  
 Signal #1 Phase : ZB-MR2 Signal #2 Phase: ZB-MR1  
 Signal #1 Info : 30M x 0.32mm x0.2 Signal #2 Info : 30M x 0.32mm x0.5µm

Compound	RT#1	RT#2	Resp#1	Resp#2	ng/ml	ng/ml
-----						
System Monitoring Compounds						
1) SA Tetrachlo...	3.548	4.048	193.9E6	42793315	19.499	15.937
28) SA Decachlor...	8.342	9.125	131.5E6	42377408	13.132	14.445
Target Compounds						
2) A alpha-BHC	0.000	4.436	0	1915640	N.D.	0.499 #
3) MA gamma-BHC...	0.000	4.695f	0	5683717	N.D.	1.570 #
4) MA Heptachlor	0.000	5.238	0	4545788	N.D.	1.193 #
5) MB Aldrin	0.000	5.560f	0	5010403	N.D.	1.446 #
7) B delta-BHC	0.000	5.087f	0	12577484	N.D.	3.475 #
8) B Heptachlo...	0.000	5.920	0	11668727	N.D.	3.482 #
10) B gamma-Chl...	0.000	6.142f	0	7039917	N.D.	2.081 #
11) B alpha-Chl...	0.000	6.220	0	6210587	N.D.	1.845 #
12) B 4,4'-DDE	0.000	6.395	0	2412805	N.D.	0.739 #
16) A 4,4'-DDD	6.256	6.877	12929334	7067551	1.438	2.882 #
25) Chlordane-3	0.000	6.142f	0	7039917	N.D.	16.165 #
26) Chlordane-4	0.000	6.220	0	6210587	N.D.	11.696 #

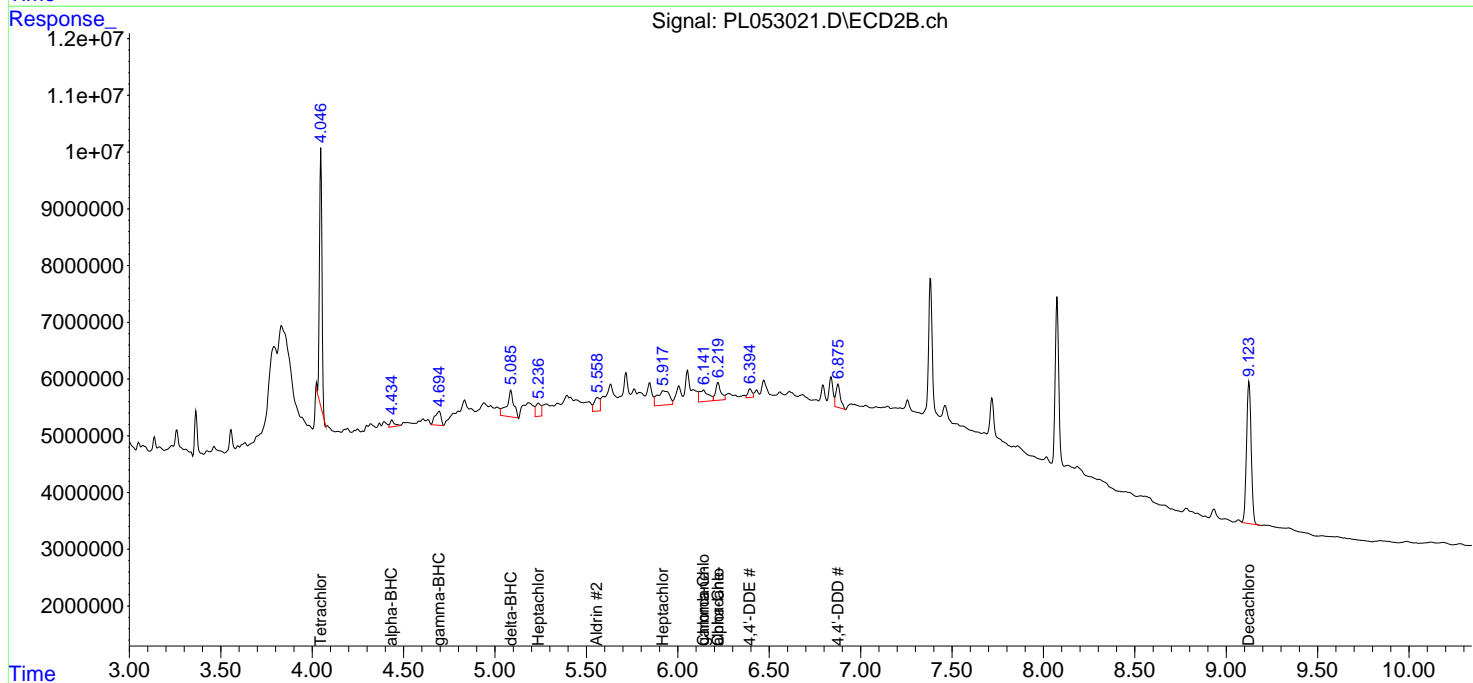
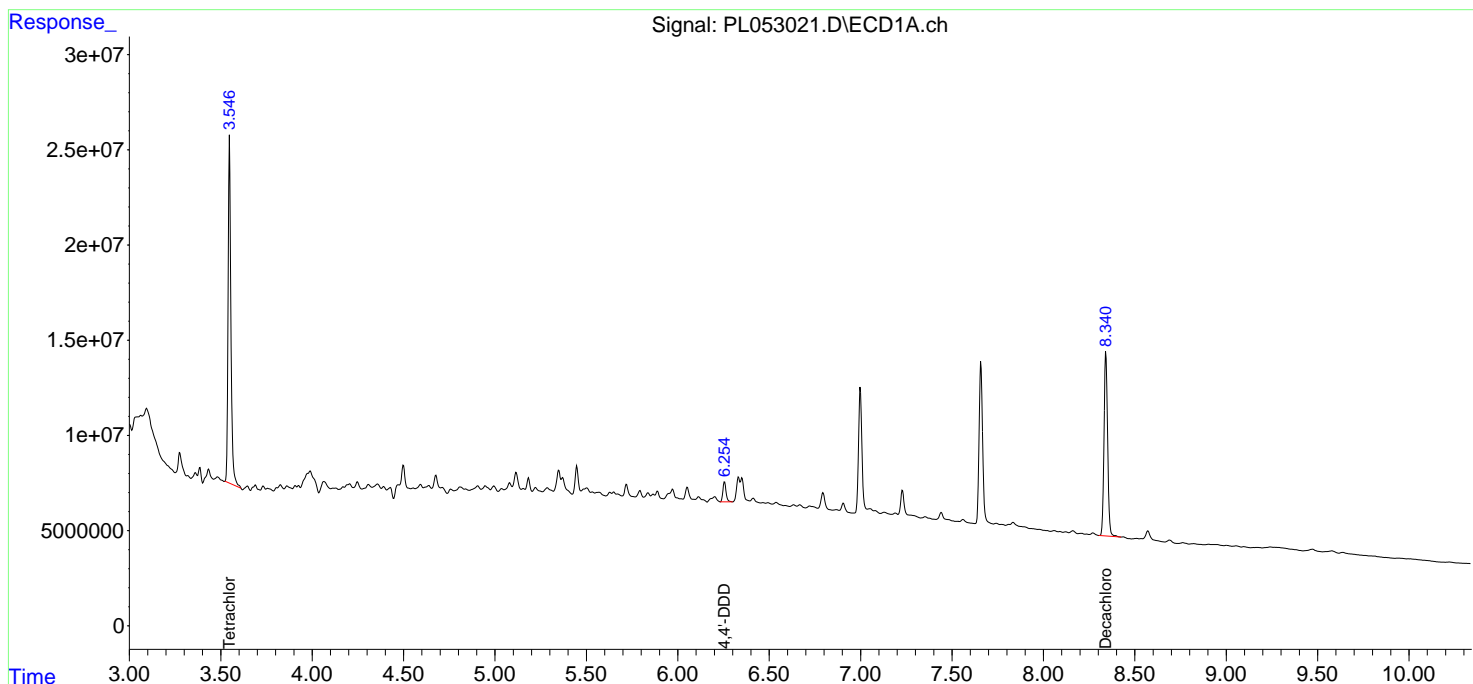
(f)=RT Delta > 1/2 Window (#)=Amounts differ by > 25% (m)=manual int.

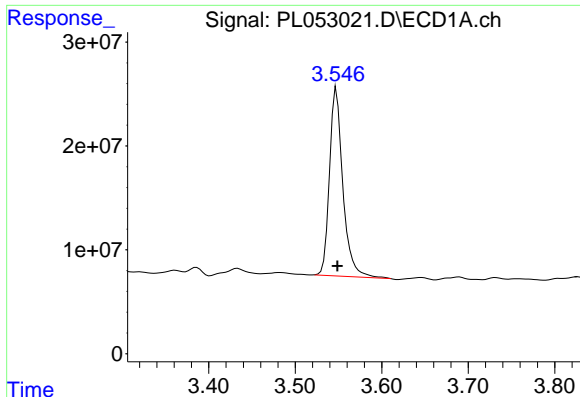
Data Path : Z:\pestpcbsrv\HPCHEM1\ECD\_L\Data\PL100219\  
 Data File : PL053021.D  
 Signal(s) : Signal #1: ECD1A.ch Signal #2: ECD2B.ch  
 Acq On : 02 Oct 2019 22:32  
 Operator : SG\AJ  
 Sample : K5095-03  
 Misc :  
 ALS Vial : 40 Sample Multiplier: 1

Instrument :  
 ECD\_L  
 ClientSampled :

Integration File signal 1: autoint1.e  
 Integration File signal 2: autoint2.e  
 Quant Time: Oct 03 01:16:22 2019  
 Quant Method : Z:\pestpcbsrv\HPCHEM1\ECD\_L\methods\PL092919.M  
 Quant Title : GC Extractables  
 QLast Update : Mon Sep 30 08:44:08 2019  
 Response via : Initial Calibration  
 Integrator: ChemStation

Volume Inj. : 1 µl  
 Signal #1 Phase : ZB-MR2 Signal #2 Phase: ZB-MR1  
 Signal #1 Info : 30M x 0.32mm x0.2 Signal #2 Info : 30M x 0.32mm x0.5µm

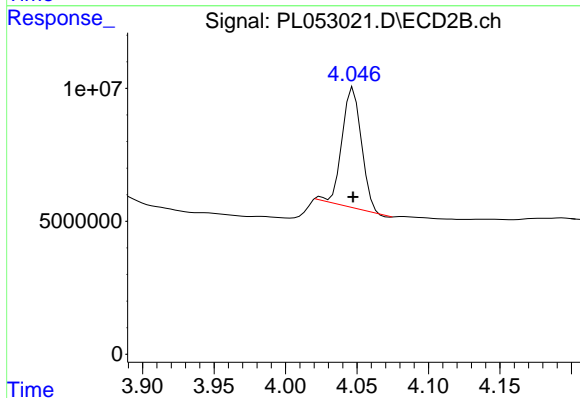




#1 Tetrachloro-m-xylene

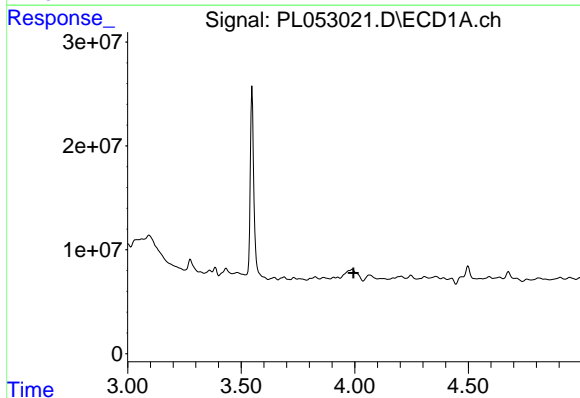
R.T.: 3.548 min  
 Delta R.T.: -0.001 min  
 Response: 193948498  
 Conc: 19.50 ng/ml

Instrument :  
 ECD\_L  
 ClientSampleId :



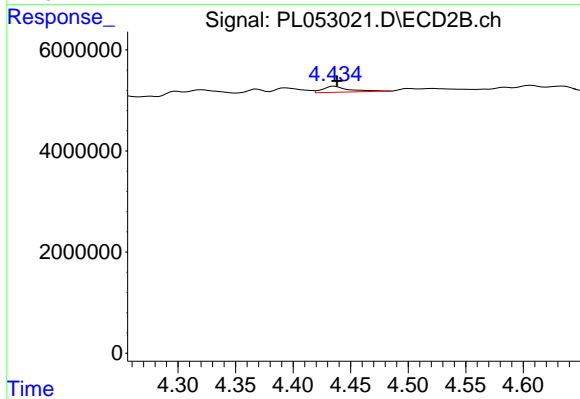
#1 Tetrachloro-m-xylene

R.T.: 4.048 min  
 Delta R.T.: 0.000 min  
 Response: 42793315  
 Conc: 15.94 ng/ml



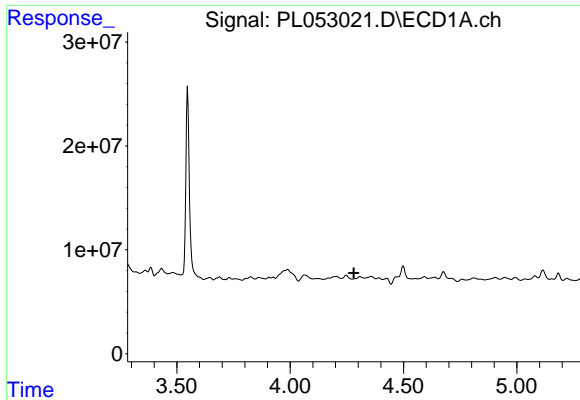
#2 alpha-BHC

R.T.: 0.000 min  
 Exp R.T. : 3.994 min  
 Response: 0  
 Conc: N.D.



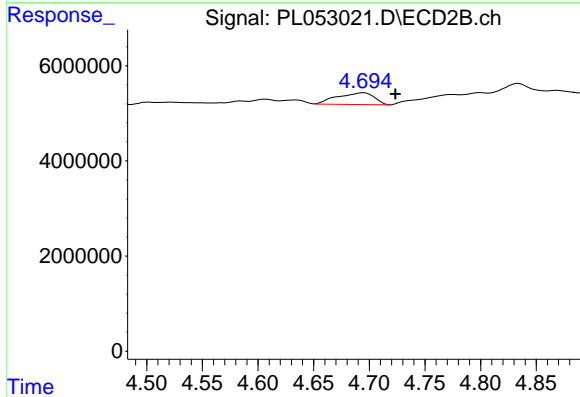
#2 alpha-BHC

R.T.: 4.436 min  
 Delta R.T.: -0.002 min  
 Response: 1915640  
 Conc: 0.50 ng/ml

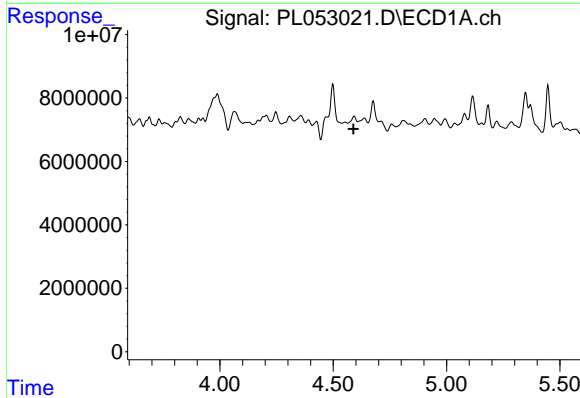


#3 gamma-BHC (Lindane)  
 R.T.: 0.000 min  
 Exp R.T.: 4.281 min  
 Response: 0  
 Conc: N.D.

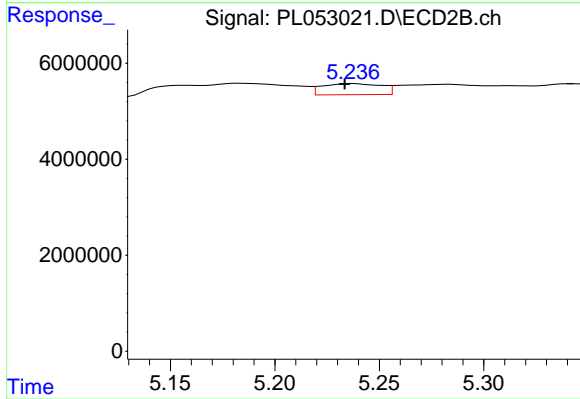
Instrument :  
 ECD\_L  
 ClientSampleId :



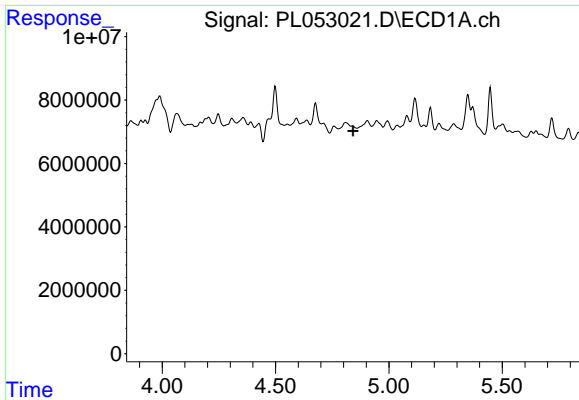
#3 gamma-BHC (Lindane)  
 R.T.: 4.695 min  
 Delta R.T.: -0.028 min  
 Response: 5683717  
 Conc: 1.57 ng/ml



#4 Heptachlor  
 R.T.: 0.000 min  
 Exp R.T.: 4.590 min  
 Response: 0  
 Conc: N.D.

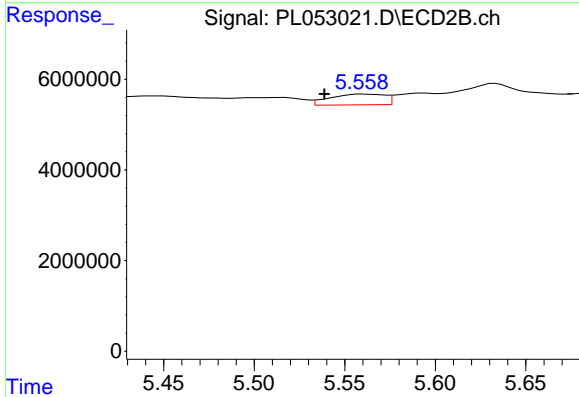


#4 Heptachlor  
 R.T.: 5.238 min  
 Delta R.T.: 0.004 min  
 Response: 4545788  
 Conc: 1.19 ng/ml

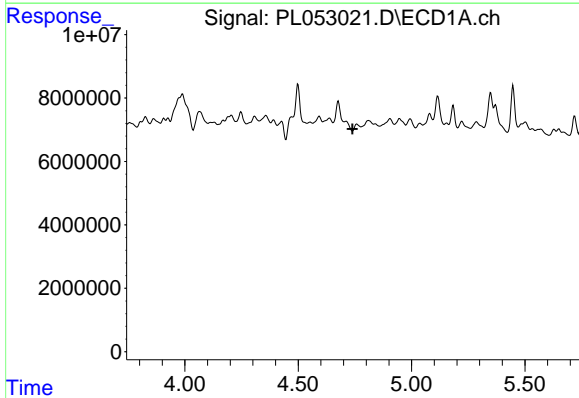


#5 Aldrin  
 R.T.: 0.000 min  
 Exp R.T.: 4.843 min  
 Response: 0  
 Conc: N.D.

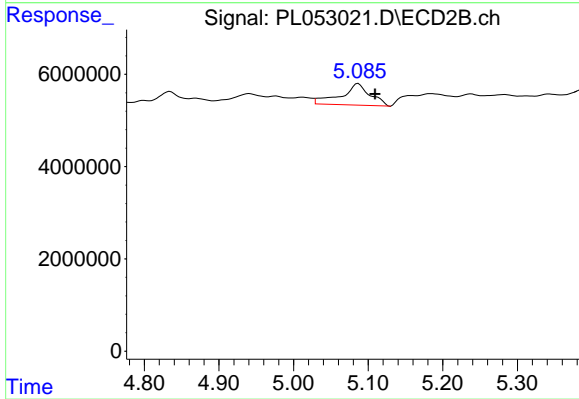
Instrument :  
 ECD\_L  
 ClientSampleId :



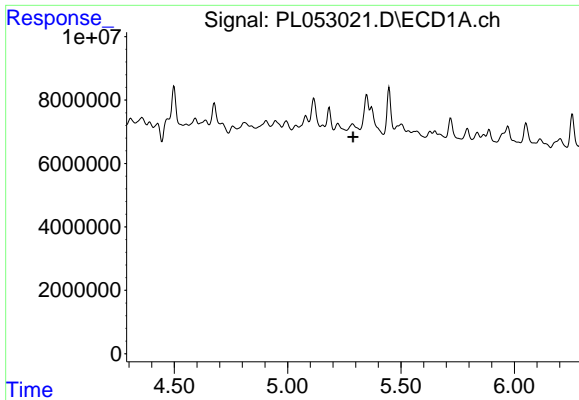
#5 Aldrin  
 R.T.: 5.560 min  
 Delta R.T.: 0.021 min  
 Response: 5010403  
 Conc: 1.45 ng/ml



#7 delta-BHC  
 R.T.: 0.000 min  
 Exp R.T.: 4.740 min  
 Response: 0  
 Conc: N.D.

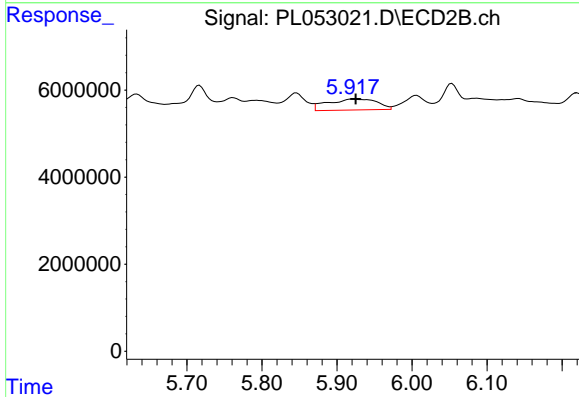


#7 delta-BHC  
 R.T.: 5.087 min  
 Delta R.T.: -0.023 min  
 Response: 12577484  
 Conc: 3.47 ng/ml

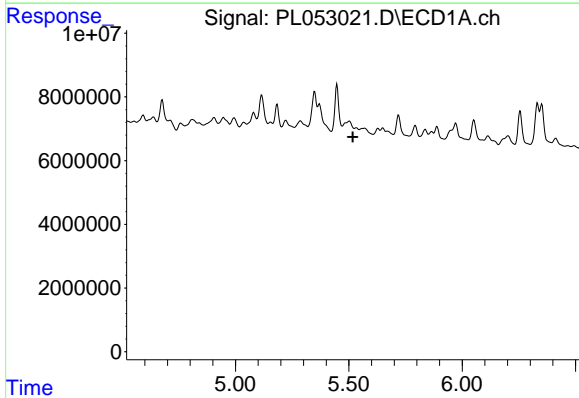


#8 Heptachlor epoxide  
 R.T.: 0.000 min  
 Exp R.T. : 5.289 min  
 Response: 0  
 Conc: N.D.

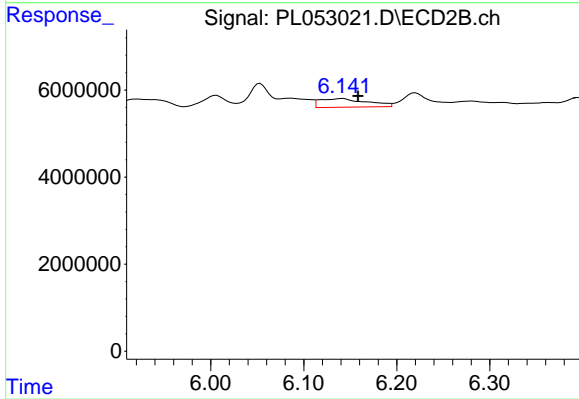
Instrument :  
 ECD\_L  
 ClientSampleId :



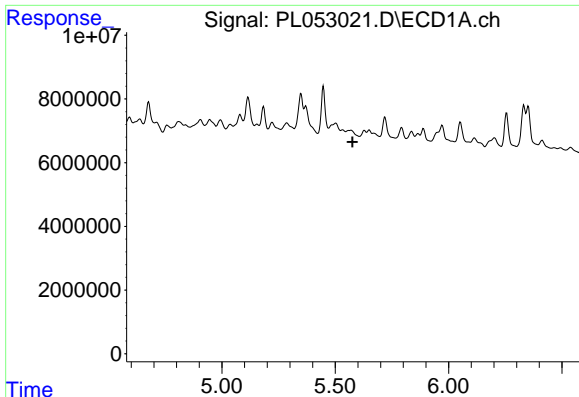
#8 Heptachlor epoxide  
 R.T.: 5.920 min  
 Delta R.T.: -0.005 min  
 Response: 11668727  
 Conc: 3.48 ng/ml



#10 gamma-Chlordane  
 R.T.: 0.000 min  
 Exp R.T. : 5.518 min  
 Response: 0  
 Conc: N.D.



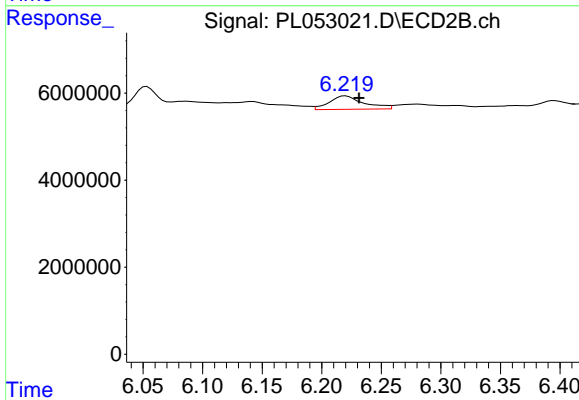
#10 gamma-Chlordane  
 R.T.: 6.142 min  
 Delta R.T.: -0.016 min  
 Response: 7039917  
 Conc: 2.08 ng/ml



#11 alpha-Chlordane

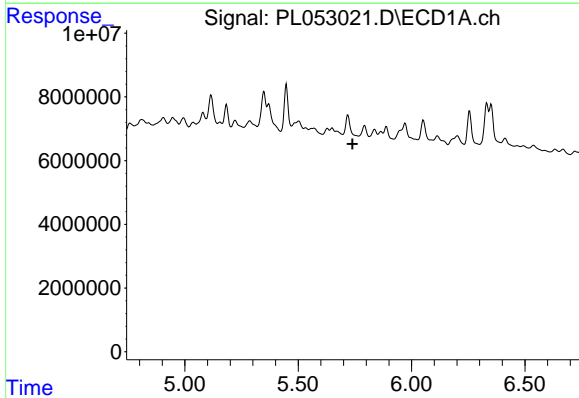
R.T.: 0.000 min  
Exp R.T.: 5.577 min  
Response: 0  
Conc: N.D.

Instrument :  
ECD\_L  
ClientSampleId :



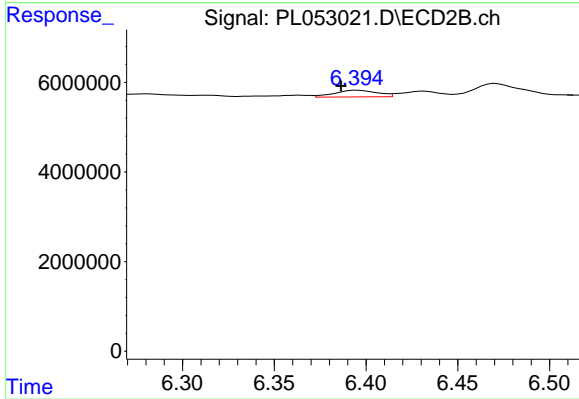
#11 alpha-Chlordane

R.T.: 6.220 min  
Delta R.T.: -0.011 min  
Response: 6210587  
Conc: 1.85 ng/ml



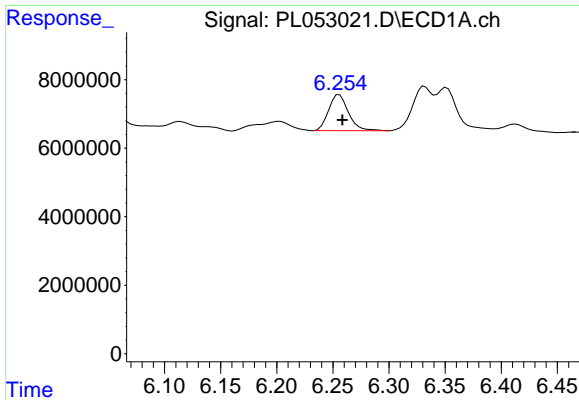
#12 4,4'-DDE

R.T.: 0.000 min  
Exp R.T.: 5.740 min  
Response: 0  
Conc: N.D.



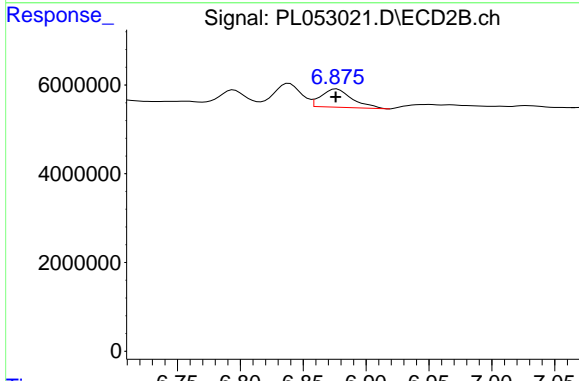
#12 4,4'-DDE

R.T.: 6.395 min  
Delta R.T.: 0.009 min  
Response: 2412805  
Conc: 0.74 ng/ml

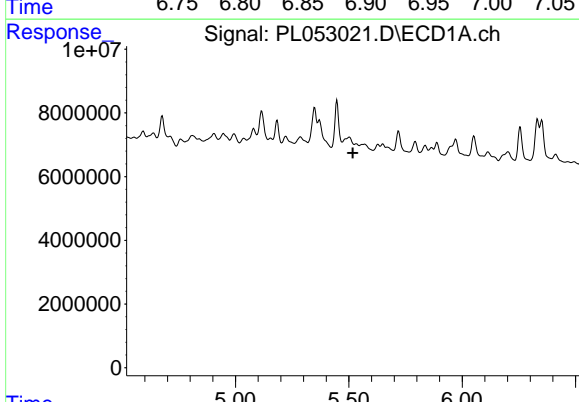


#16 4,4'-DDD  
 R.T.: 6.256 min  
 Delta R.T.: -0.003 min  
 Response: 12929334  
 Conc: 1.44 ng/ml

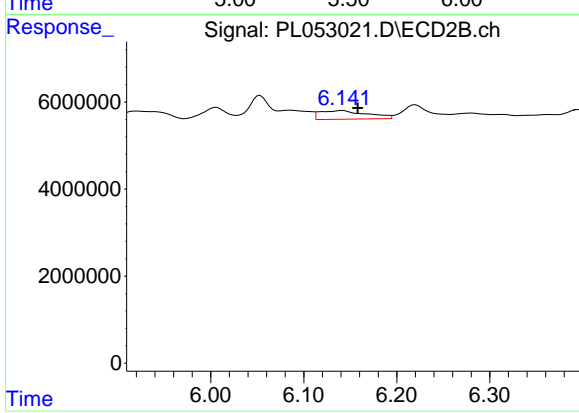
Instrument :  
 ECD\_L  
 ClientSampled :



#16 4,4'-DDD  
 R.T.: 6.877 min  
 Delta R.T.: 0.000 min  
 Response: 7067551  
 Conc: 2.88 ng/ml

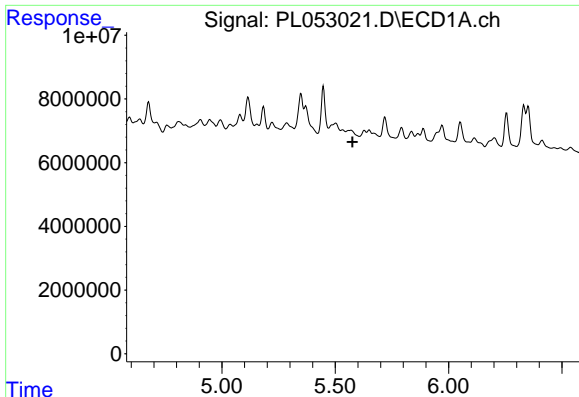


#25 Chlordane-3  
 R.T.: 0.000 min  
 Exp R.T. : 5.518 min  
 Response: 0  
 Conc: N.D.



#25 Chlordane-3  
 R.T.: 6.142 min  
 Delta R.T.: -0.016 min  
 Response: 7039917  
 Conc: 16.16 ng/ml

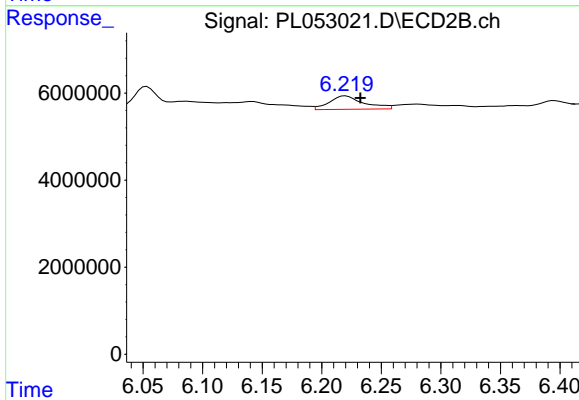




#26 Chlordane-4

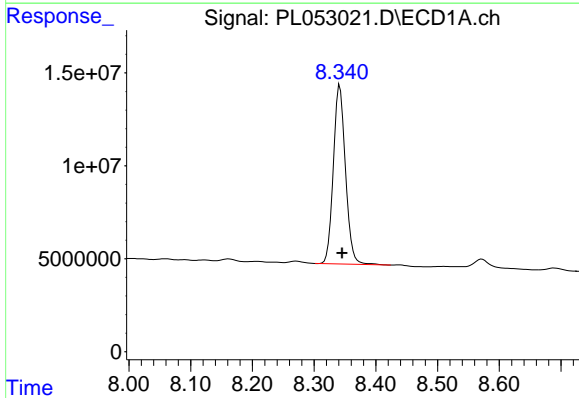
R.T.: 0.000 min  
Exp R.T.: 5.577 min  
Response: 0  
Conc: N.D.

Instrument :  
ECD\_L  
ClientSampleId :



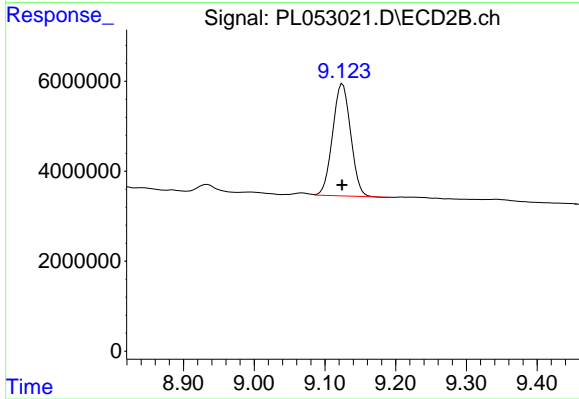
#26 Chlordane-4

R.T.: 6.220 min  
Delta R.T.: -0.012 min  
Response: 6210587  
Conc: 11.70 ng/ml



#28 Decachlorobiphenyl

R.T.: 8.342 min  
Delta R.T.: -0.003 min  
Response: 131531725  
Conc: 13.13 ng/ml



#28 Decachlorobiphenyl

R.T.: 9.125 min  
Delta R.T.: 0.000 min  
Response: 42377408  
Conc: 14.44 ng/ml