

Data Path : Z:\pestpcbsrv\HPCHEM1\ECD_L\Data\PL100220\
 Data File : PL061960.D
 Signal(s) : Signal #1: ECD1A.ch Signal #2: ECD2B.ch
 Acq On : 02 Oct 2020 19:20
 Operator : DD\AJ
 Sample : L3865-04
 Misc :
 ALS Vial : 35 Sample Multiplier: 1

Instrument :
 ECD_L
 ClientSampleId :

Integration File signal 1: autoint1.e
 Integration File signal 2: autoint2.e
 Quant Time: Oct 03 06:28:58 2020
 Quant Method : Z:\pestpcbsrv\HPCHEM1\ECD_L\methods\PL092320.M
 Quant Title : GC Extractables
 QLast Update : Wed Sep 23 13:58:40 2020
 Response via : Initial Calibration
 Integrator: ChemStation

Volume Inj. : 1 µl
 Signal #1 Phase : ZB-MR2 Signal #2 Phase: ZB-MR1
 Signal #1 Info : 30M x 0.32mm x0.2 Signal #2 Info : 30M x 0.32mm x0.5µm

Compound	RT#1	RT#2	Resp#1	Resp#2	ng/ml	ng/ml

System Monitoring Compounds						
1) SA Tetrachlo...	3.458	4.008	28058817	41970690	16.447	15.384
28) SA Decachlor...	8.209	9.094	33177511	47407432	20.395	21.535

Target Compounds

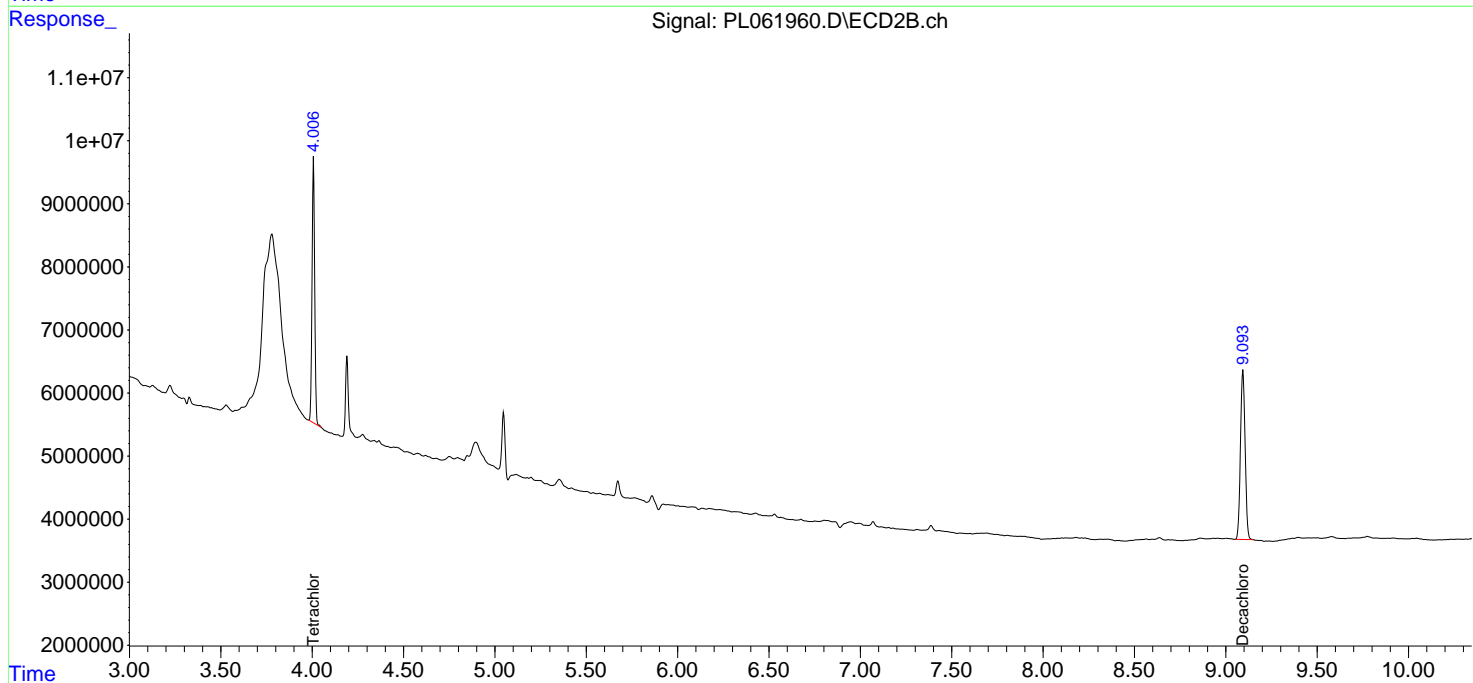
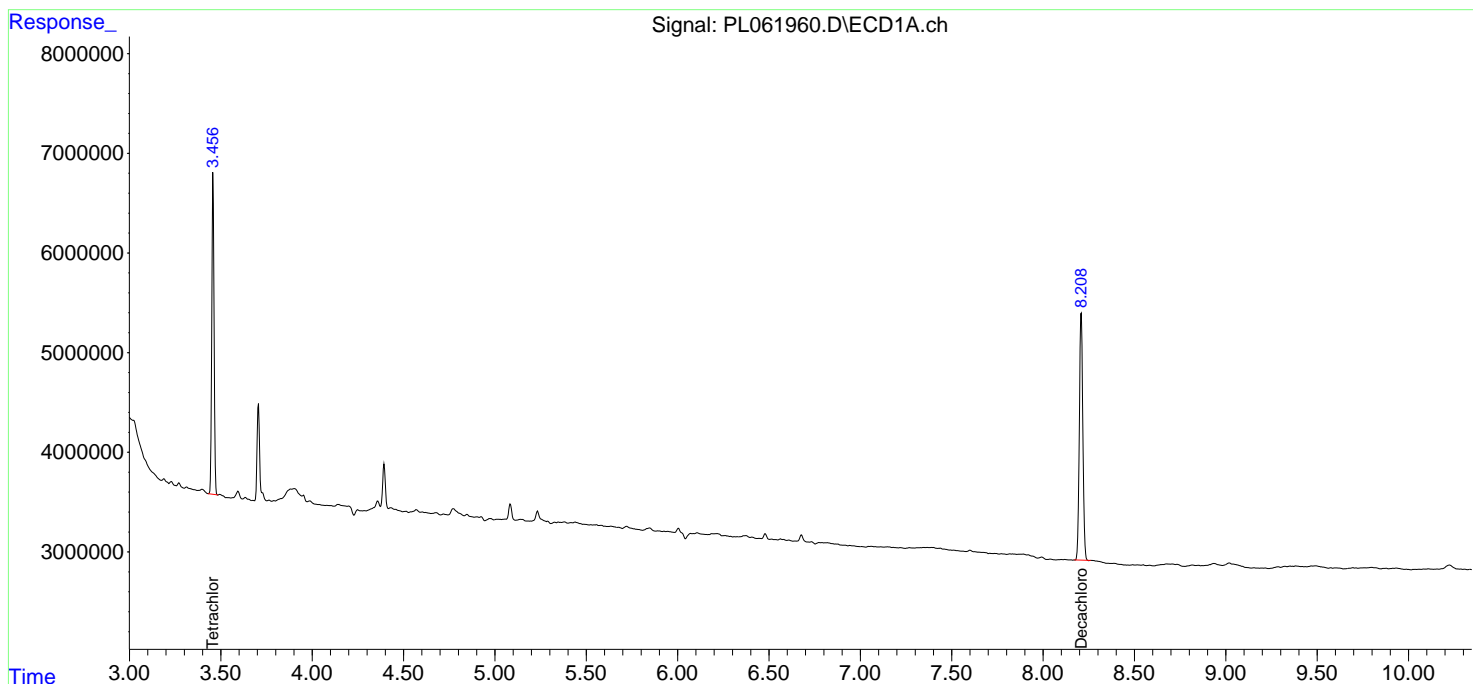
(f)=RT Delta > 1/2 Window (#)=Amounts differ by > 25% (m)=manual int.

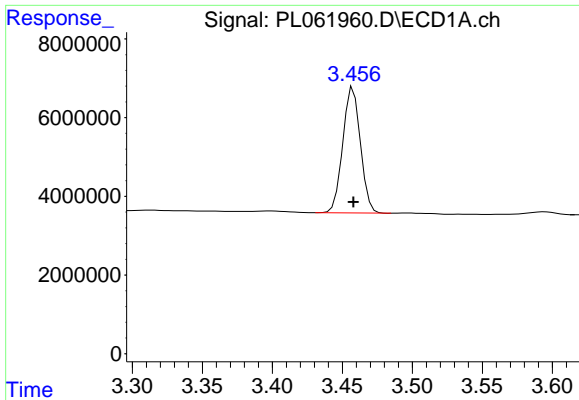
Data Path : Z:\pestpcbsrv\HPCHEM1\ECD_L\Data\PL100220\
 Data File : PL061960.D
 Signal(s) : Signal #1: ECD1A.ch Signal #2: ECD2B.ch
 Acq On : 02 Oct 2020 19:20
 Operator : DD\AJ
 Sample : L3865-04
 Misc :
 ALS Vial : 35 Sample Multiplier: 1

Instrument :
 ECD_L
 ClientSampled :

Integration File signal 1: autoint1.e
 Integration File signal 2: autoint2.e
 Quant Time: Oct 03 06:28:58 2020
 Quant Method : Z:\pestpcbsrv\HPCHEM1\ECD_L\methods\PL092320.M
 Quant Title : GC Extractables
 QLast Update : Wed Sep 23 13:58:40 2020
 Response via : Initial Calibration
 Integrator: ChemStation

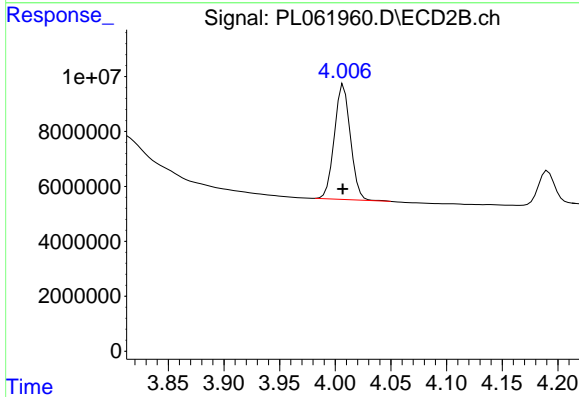
Volume Inj. : 1 µl
 Signal #1 Phase : ZB-MR2 Signal #2 Phase: ZB-MR1
 Signal #1 Info : 30M x 0.32mm x0.2 Signal #2 Info : 30M x 0.32mm x0.5µm



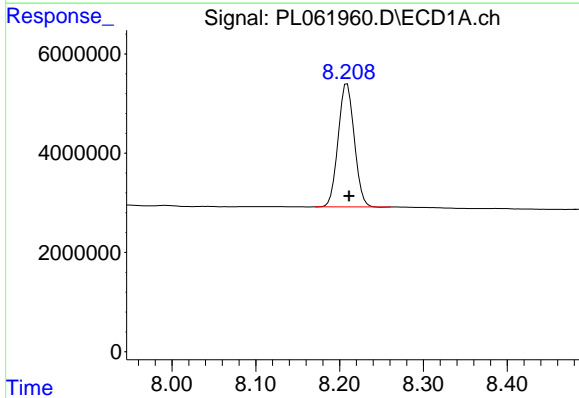


#1 Tetrachloro-m-xylene
 R.T.: 3.458 min
 Delta R.T.: 0.000 min
 Response: 28058817
 Conc: 16.45 ng/ml

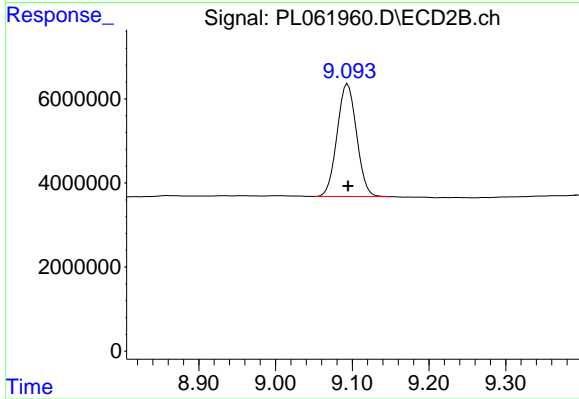
Instrument :
 ECD_L
 ClientSampleId :



#1 Tetrachloro-m-xylene
 R.T.: 4.008 min
 Delta R.T.: 0.000 min
 Response: 41970690
 Conc: 15.38 ng/ml



#28 Decachlorobiphenyl
 R.T.: 8.209 min
 Delta R.T.: -0.002 min
 Response: 33177511
 Conc: 20.39 ng/ml



#28 Decachlorobiphenyl
 R.T.: 9.094 min
 Delta R.T.: 0.000 min
 Response: 47407432
 Conc: 21.54 ng/ml