

Data Path : Z:\pestpcbsrv\HPCHEM1\ECD_L\Data\PL100324\
 Data File : PL092173.D
 Signal(s) : Signal #1: ECD1A.ch Signal #2: ECD2B.ch
 Acq On : 01 Oct 2024 16:24
 Operator : AR\AJ
 Sample : PB163810BS
 Misc :
 ALS Vial : 6 Sample Multiplier: 1

Instrument :
 ECD_L
ClientSampleId :
 PB163810BS

Manual Integrations
APPROVED
 Reviewed By :Abdul Mirza 10/02/2024
 Supervised By :Ankita Jodhani 10/02/2024

Integration File signal 1: autoint1.e
 Integration File signal 2: autoint2.e
 Quant Time: Oct 02 04:15:03 2024
 Quant Method : Z:\pestpcbsrv\HPCHEM1\ECD_L\methods\PL092324.M
 Quant Title : GC Extractables
 QLast Update : Mon Sep 23 16:44:57 2024
 Response via : Initial Calibration
 Integrator: ChemStation

Volume Inj. : 1 µl
 Signal #1 Phase : ZB-MR2 Signal #2 Phase: ZB-MR1
 Signal #1 Info : 30M x 0.32mm x0.2 Signal #2 Info : 30M x 0.32mm x0.5µm

Compound	RT#1	RT#2	Resp#1	Resp#2	ng/ml	ng/ml

System Monitoring Compounds						
1) SA Tetrachlo...	3.543	2.781	40082499	46181124	18.017	18.413
28) SA Decachlor...	9.060	7.921	31330440	48400527	19.125	19.345
Target Compounds						
2) A alpha-BHC	3.999	3.284	159.5E6	200.7E6	51.503	55.094
3) MA gamma-BHC...	4.332	3.614	153.7E6	189.3E6	49.615	53.622
4) MA Heptachlor	4.921	3.954	143.2E6	192.4E6	51.794	55.753
5) MB Aldrin	5.263	4.234	135.4E6	181.0E6	48.751	53.230
6) B beta-BHC	4.529	3.914	68611312	82050471	51.728	54.588
7) B delta-BHC	4.776	4.143	143.7E6	186.6E6	49.836	53.752
8) B Heptachlo...	5.689	4.737	125.9E6	172.7E6	49.456	57.137
9) A Endosulfan I	6.074	5.107	117.2E6	152.6E6	50.675	55.597
10) B gamma-Chl...	5.944	4.987	126.7E6	169.3E6	51.271	56.286
11) B alpha-Chl...	6.023	5.051	127.5E6	166.8E6	51.773	55.736
12) B 4,4'-DDE	6.197	5.240	111.7E6	158.2E6	51.605	56.918
13) MA Dieldrin	6.349	5.371	123.3E6	163.6E6	50.540	55.795
14) MA Endrin	6.578	5.647	104.4E6	144.1E6	50.647m	54.970
15) B Endosulfa...	6.798	5.941	110.0E6	140.6E6	49.987	56.203
16) A 4,4'-DDD	6.714	5.795	91666338	123.4E6	51.047	57.768
17) MA 4,4'-DDT	7.028	6.045	98427557	129.8E6	53.458	56.103
18) B Endrin al...	6.928	6.121	85745353	109.0E6	49.201	53.417
19) B Endosulfa...	7.163	6.343	100.5E6	133.8E6	50.674	55.480
20) A Methoxychlor	7.504	6.620	51156704	67886857	52.110	54.294
21) B Endrin ke...	7.648	6.849	112.1E6	154.5E6	51.017	55.814
22) Mirex	8.121	7.029	87001397	124.0E6	48.307	50.959

(f)=RT Delta > 1/2 Window (#)=Amounts differ by > 25% (m)=manual int.

Data Path : Z:\pestpcbsrv\HPCHEM1\ECD_L\Data\PL100324\
 Data File : PL092173.D
 Signal(s) : Signal #1: ECD1A.ch Signal #2: ECD2B.ch
 Acq On : 01 Oct 2024 16:24
 Operator : AR\AJ
 Sample : PB163810BS
 Misc :
 ALS Vial : 6 Sample Multiplier: 1

Instrument :

ECD_L

ClientSampleId :

PB163810BS

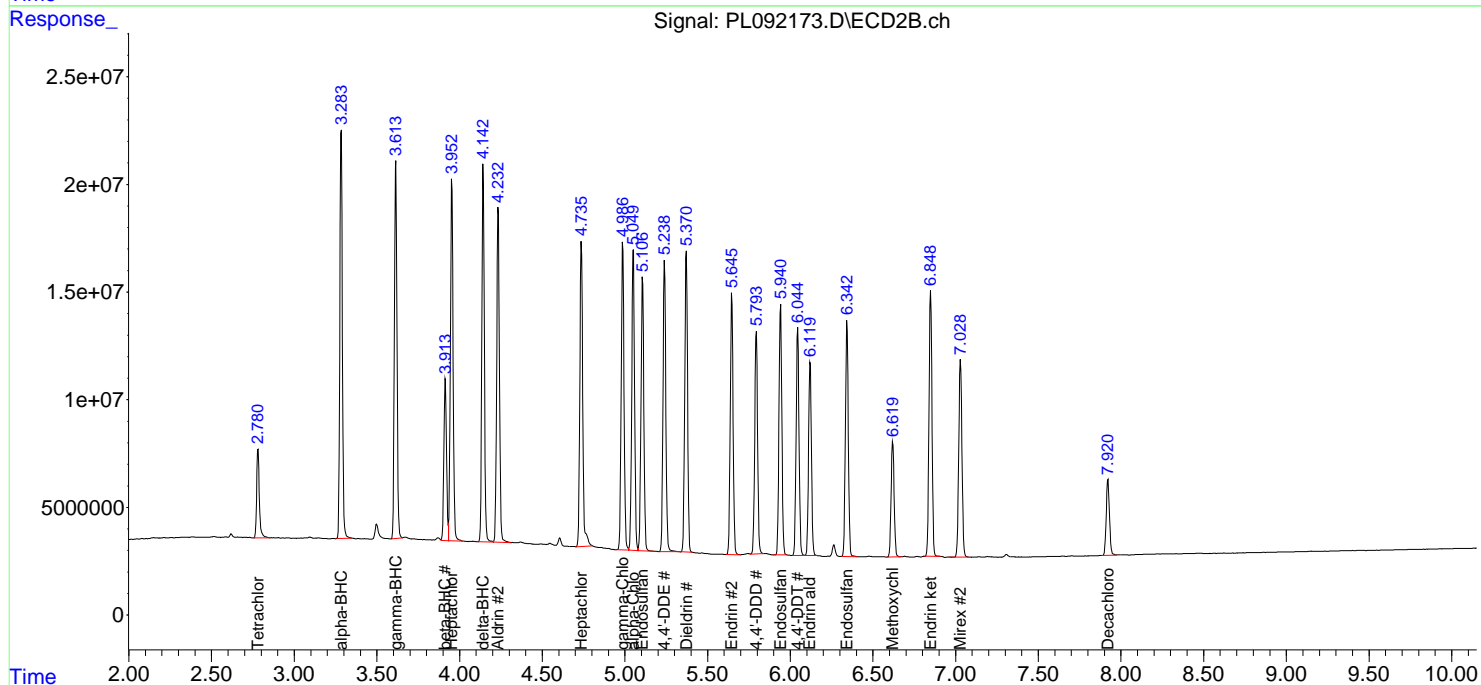
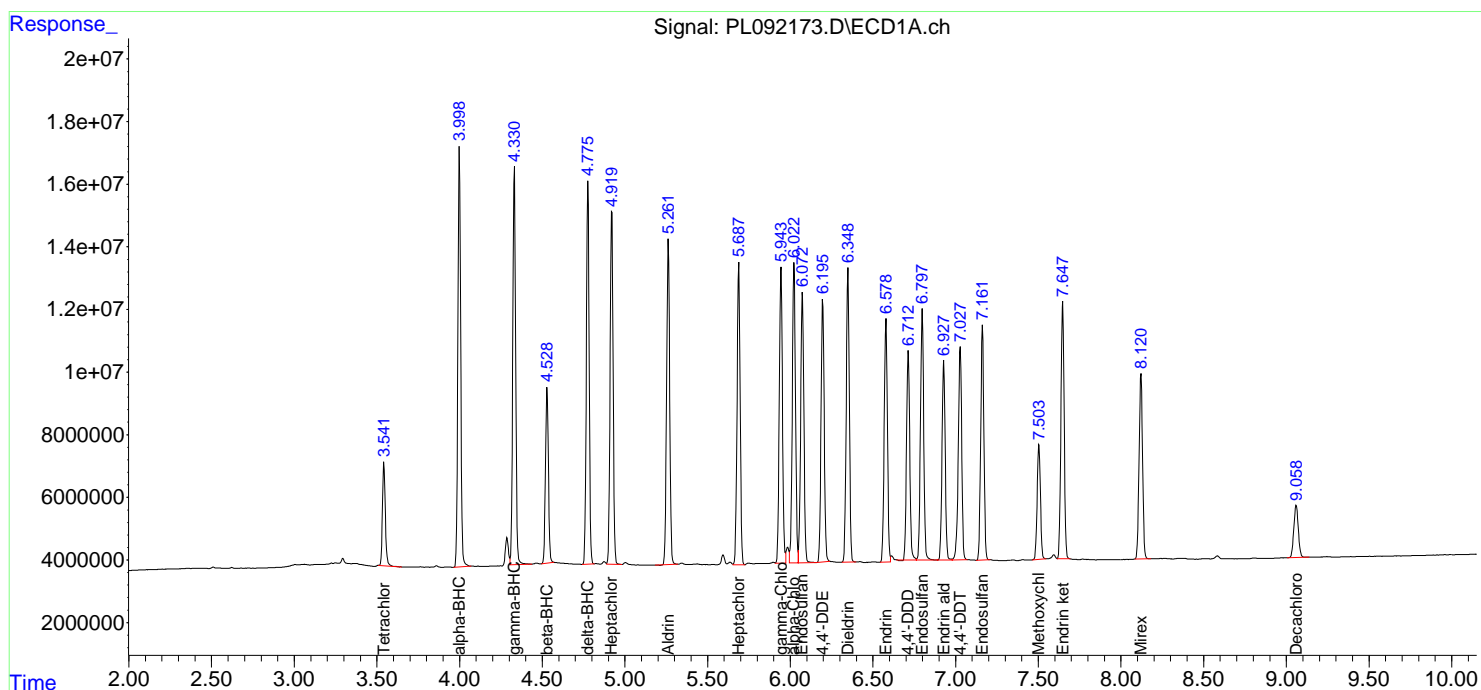
Manual Integrations

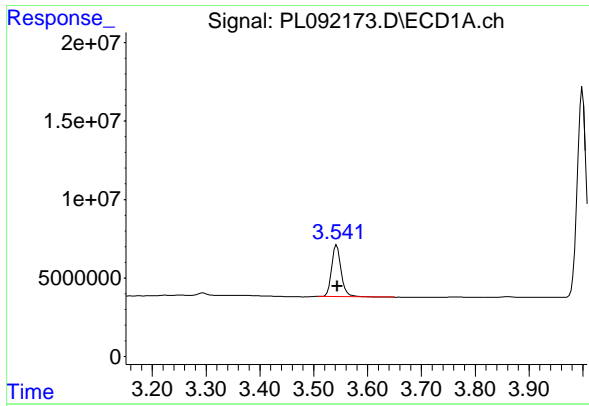
APPROVED

Reviewed By :Abdul Mirza 10/02/2024
 Supervised By :Ankita Jodhani 10/02/2024

Integration File signal 1: autoint1.e
 Integration File signal 2: autoint2.e
 Quant Time: Oct 02 04:15:03 2024
 Quant Method : Z:\pestpcbsrv\HPCHEM1\ECD_L\methods\PL092324.M
 Quant Title : GC Extractables
 QLast Update : Mon Sep 23 16:44:57 2024
 Response via : Initial Calibration
 Integrator: ChemStation

Volume Inj. : 1 µl
 Signal #1 Phase : ZB-MR2 Signal #2 Phase: ZB-MR1
 Signal #1 Info : 30M x 0.32mm x0.2 Signal #2 Info : 30M x 0.32mm x0.5µm





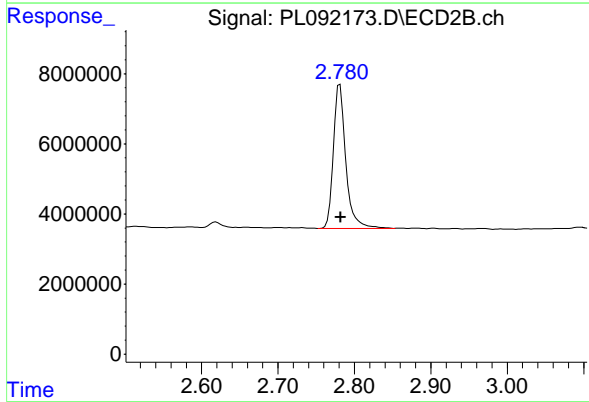
#1 Tetrachloro-m-xylene

R.T.: 3.543 min
 Delta R.T.: -0.001 min
 Response: 40082499
 Conc: 18.02 ng/ml

Instrument :
 ECD_L
 Client Sample Id :
 PB163810BS

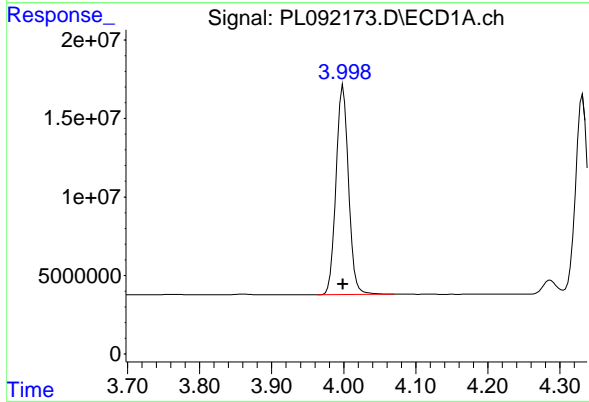
Manual Integrations
 APPROVED

Reviewed By :Abdul Mirza 10/02/2024
 Supervised By :Ankita Jodhani 10/02/2024



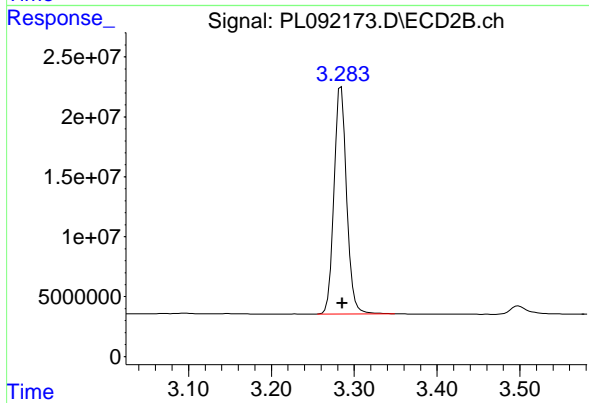
#1 Tetrachloro-m-xylene

R.T.: 2.781 min
 Delta R.T.: -0.001 min
 Response: 46181124
 Conc: 18.41 ng/ml



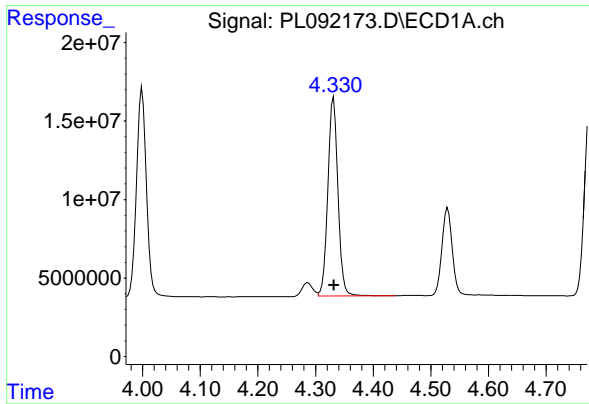
#2 alpha-BHC

R.T.: 3.999 min
 Delta R.T.: 0.000 min
 Response: 159479984
 Conc: 51.50 ng/ml



#2 alpha-BHC

R.T.: 3.284 min
 Delta R.T.: -0.001 min
 Response: 200724648
 Conc: 55.09 ng/ml



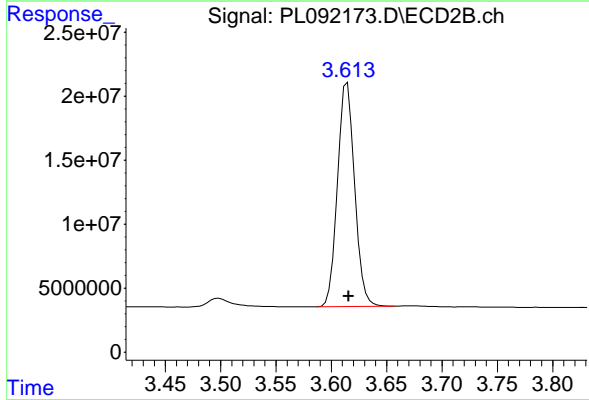
#3 gamma-BHC (Lindane)

R.T.: 4.332 min
 Delta R.T.: 0.000 min
 Response: 153747093
 Conc: 49.61 ng/ml

Instrument : ECD_L
 Client Sample Id : PB163810BS

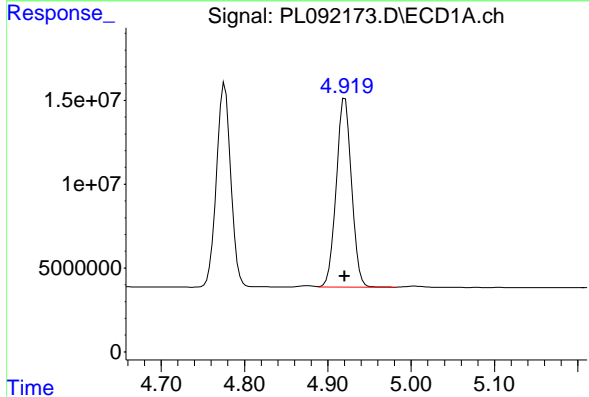
Manual Integrations
 APPROVED

Reviewed By :Abdul Mirza 10/02/2024
 Supervised By :Ankita Jodhani 10/02/2024



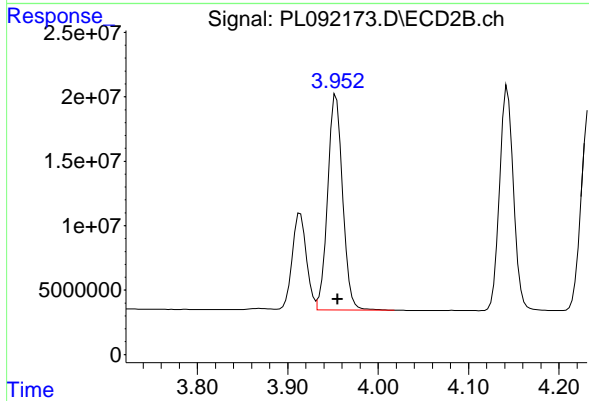
#3 gamma-BHC (Lindane)

R.T.: 3.614 min
 Delta R.T.: -0.001 min
 Response: 189338142
 Conc: 53.62 ng/ml



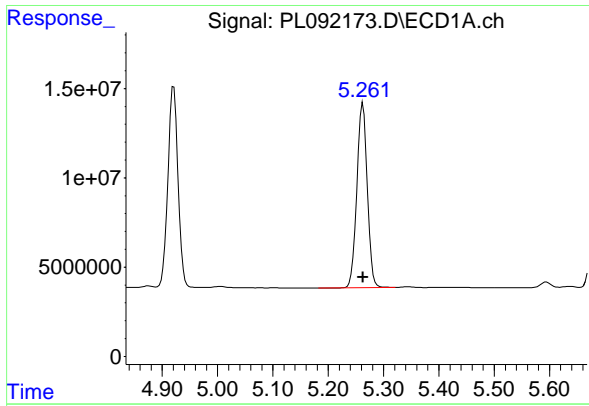
#4 Heptachlor

R.T.: 4.921 min
 Delta R.T.: 0.000 min
 Response: 143234976
 Conc: 51.79 ng/ml



#4 Heptachlor

R.T.: 3.954 min
 Delta R.T.: -0.001 min
 Response: 192382101
 Conc: 55.75 ng/ml



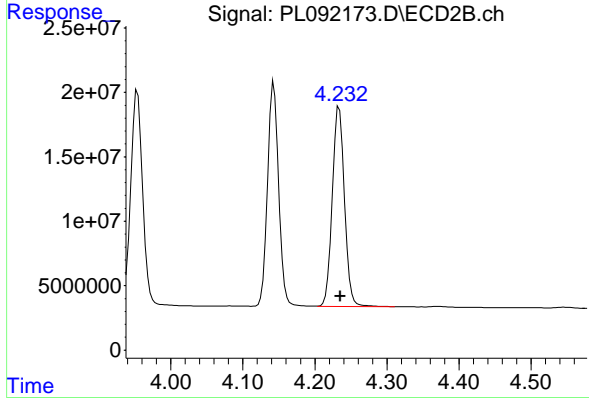
#5 Aldrin

R.T.: 5.263 min
 Delta R.T.: 0.000 min
 Response: 135409152
 Conc: 48.75 ng/ml

Instrument : ECD_L
 Client Sample Id : PB163810BS

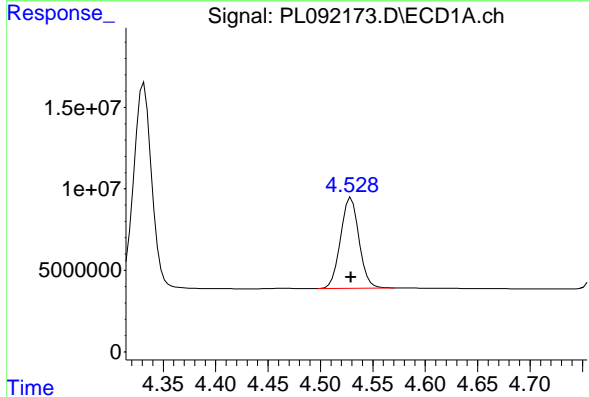
Manual Integrations
 APPROVED

Reviewed By :Abdul Mirza 10/02/2024
 Supervised By :Ankita Jodhani 10/02/2024



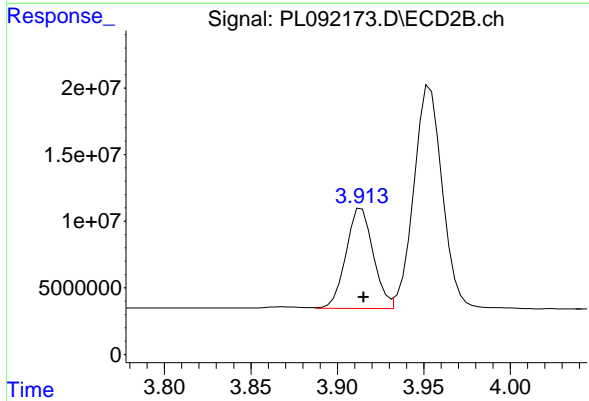
#5 Aldrin

R.T.: 4.234 min
 Delta R.T.: -0.002 min
 Response: 181040671
 Conc: 53.23 ng/ml



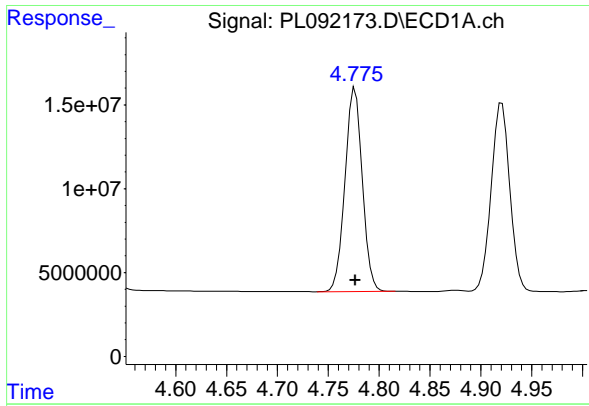
#6 beta-BHC

R.T.: 4.529 min
 Delta R.T.: 0.000 min
 Response: 68611312
 Conc: 51.73 ng/ml



#6 beta-BHC

R.T.: 3.914 min
 Delta R.T.: -0.001 min
 Response: 82050471
 Conc: 54.59 ng/ml



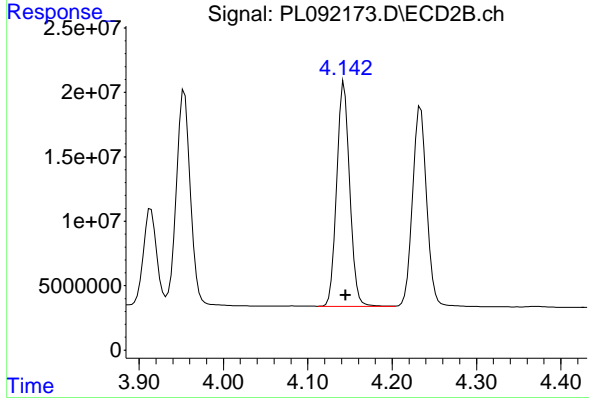
#7 delta-BHC

R.T.: 4.776 min
 Delta R.T.: 0.000 min
 Response: 143738138
 Conc: 49.84 ng/ml

Instrument : ECD_L
 Client Sample Id : PB163810BS

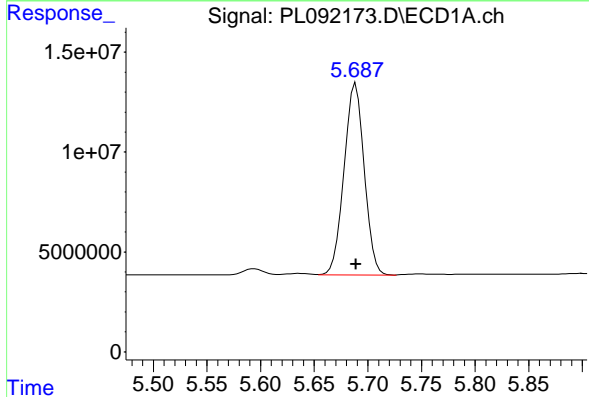
Manual Integrations
 APPROVED

Reviewed By :Abdul Mirza 10/02/2024
 Supervised By :Ankita Jodhani 10/02/2024



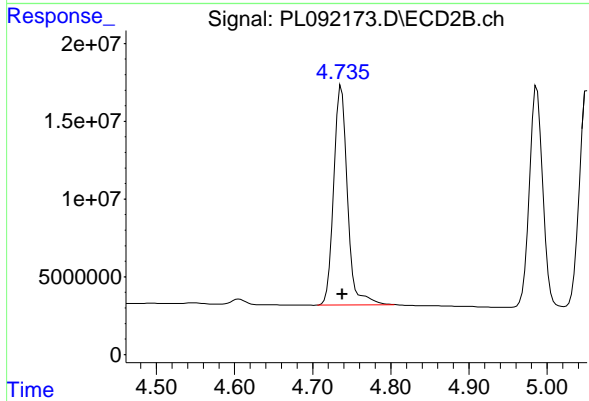
#7 delta-BHC

R.T.: 4.143 min
 Delta R.T.: -0.002 min
 Response: 186612022
 Conc: 53.75 ng/ml



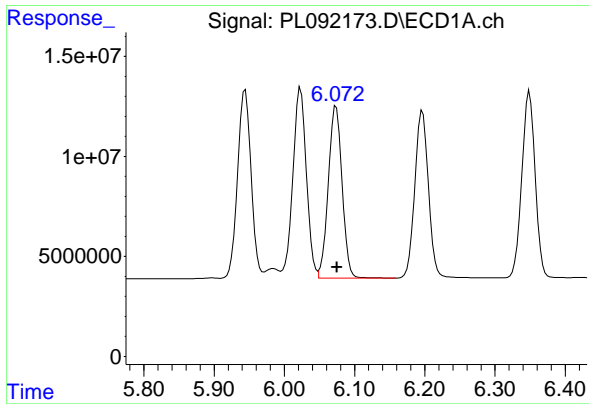
#8 Heptachlor epoxide

R.T.: 5.689 min
 Delta R.T.: 0.000 min
 Response: 125864227
 Conc: 49.46 ng/ml



#8 Heptachlor epoxide

R.T.: 4.737 min
 Delta R.T.: -0.002 min
 Response: 172718857
 Conc: 57.14 ng/ml



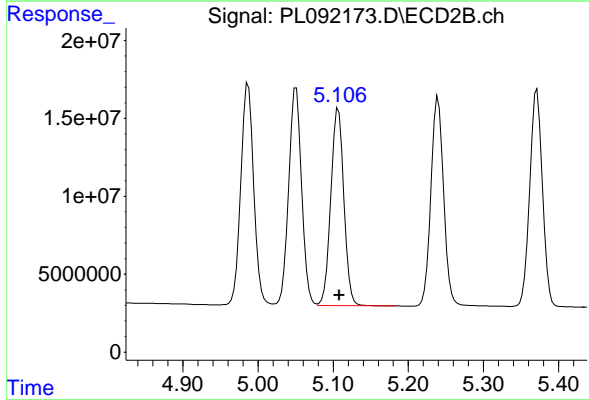
#9 Endosulfan I

R.T.: 6.074 min
 Delta R.T.: -0.001 min
 Response: 117232337
 Conc: 50.68 ng/ml

Instrument : ECD_L
 ClientSampleId : PB163810BS

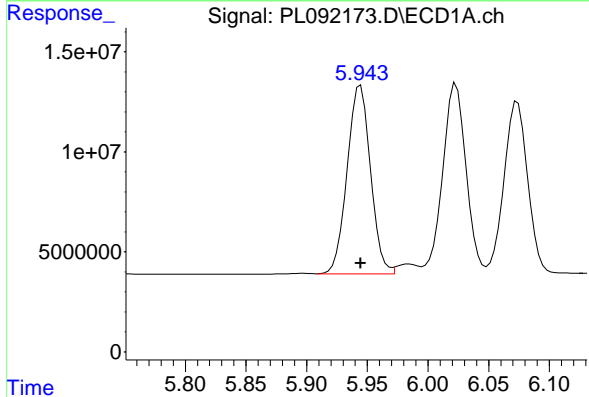
Manual Integrations
 APPROVED

Reviewed By :Abdul Mirza 10/02/2024
 Supervised By :Ankita Jodhani 10/02/2024



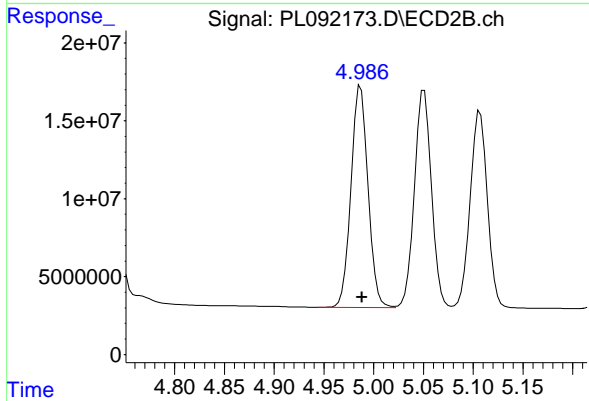
#9 Endosulfan I

R.T.: 5.107 min
 Delta R.T.: -0.001 min
 Response: 152593098
 Conc: 55.60 ng/ml



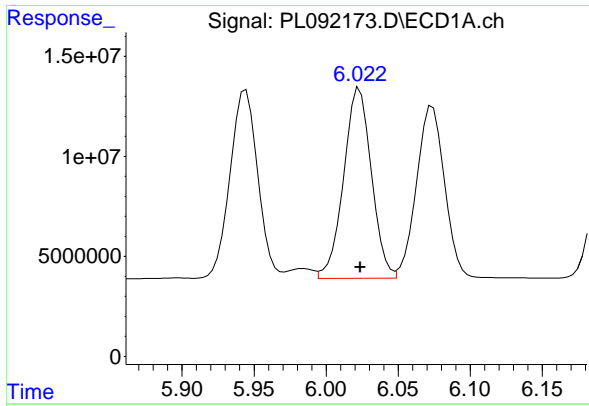
#10 gamma-Chlordane

R.T.: 5.944 min
 Delta R.T.: 0.000 min
 Response: 126700566
 Conc: 51.27 ng/ml



#10 gamma-Chlordane

R.T.: 4.987 min
 Delta R.T.: -0.001 min
 Response: 169342175
 Conc: 56.29 ng/ml



#11 alpha-Chlordane

R.T.: 6.023 min
 Delta R.T.: 0.000 min
 Response: 127534296
 Conc: 51.77 ng/ml

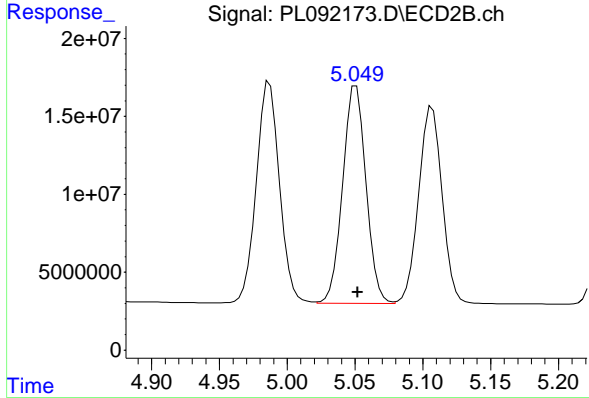
Instrument :

ECD_L

ClientSampleId :
 PB163810BS

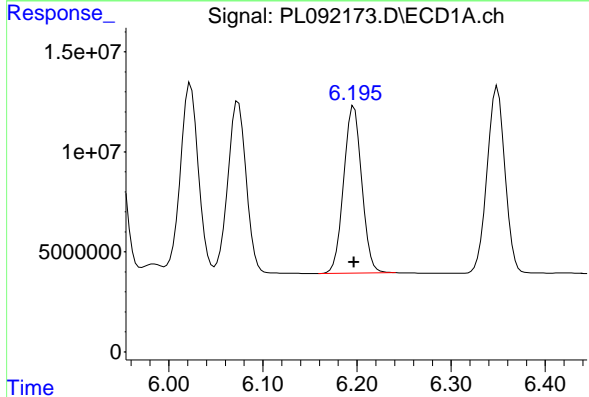
Manual Integrations
 APPROVED

Reviewed By :Abdul Mirza 10/02/2024
 Supervised By :Ankita Jodhani 10/02/2024



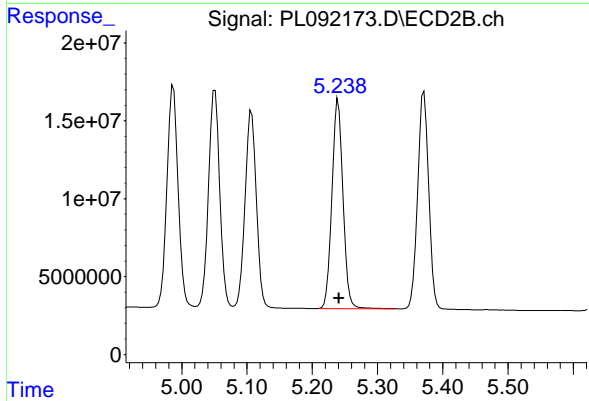
#11 alpha-Chlordane

R.T.: 5.051 min
 Delta R.T.: -0.001 min
 Response: 166846732
 Conc: 55.74 ng/ml



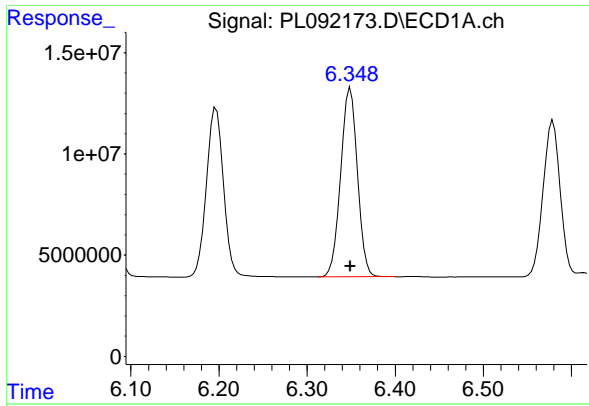
#12 4,4'-DDE

R.T.: 6.197 min
 Delta R.T.: 0.000 min
 Response: 111695814
 Conc: 51.61 ng/ml



#12 4,4'-DDE

R.T.: 5.240 min
 Delta R.T.: -0.001 min
 Response: 158165774
 Conc: 56.92 ng/ml



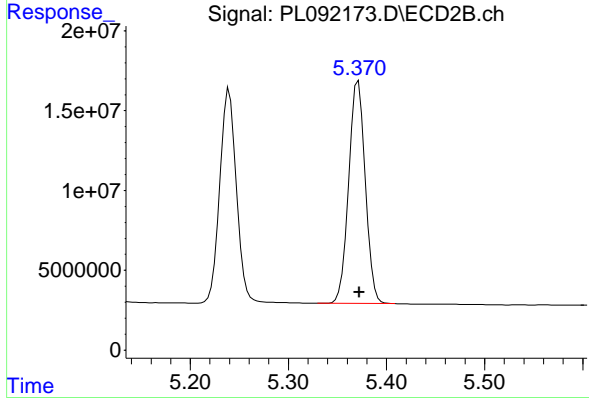
#13 Dieldrin

R.T.: 6.349 min
 Delta R.T.: 0.000 min
 Response: 123260647
 Conc: 50.54 ng/ml

Instrument : ECD_L
 Client Sample Id : PB163810BS

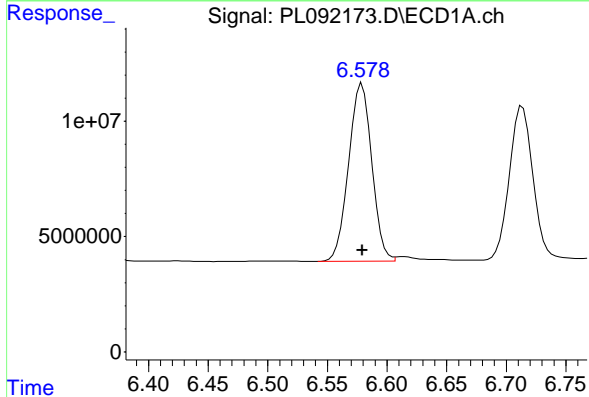
Manual Integrations
 APPROVED

Reviewed By :Abdul Mirza 10/02/2024
 Supervised By :Ankita Jodhani 10/02/2024



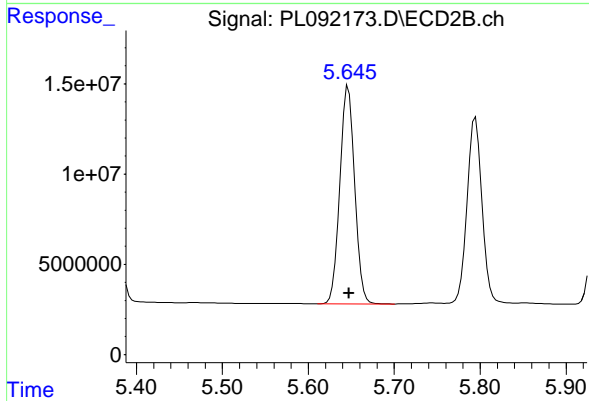
#13 Dieldrin

R.T.: 5.371 min
 Delta R.T.: -0.001 min
 Response: 163582412
 Conc: 55.80 ng/ml



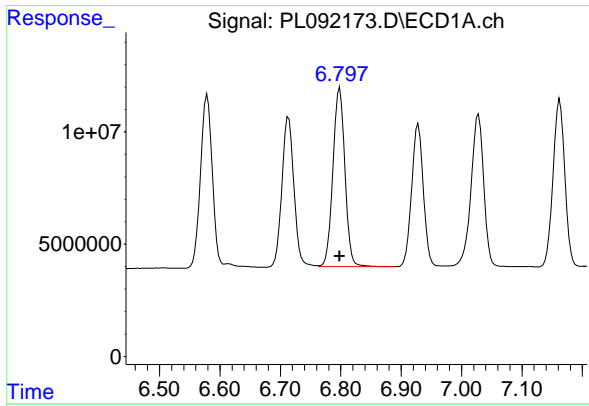
#14 Endrin

R.T.: 6.578 min
 Delta R.T.: -0.002 min
 Response: 104368768
 Conc: 50.65 ng/ml m



#14 Endrin

R.T.: 5.647 min
 Delta R.T.: 0.000 min
 Response: 144140393
 Conc: 54.97 ng/ml



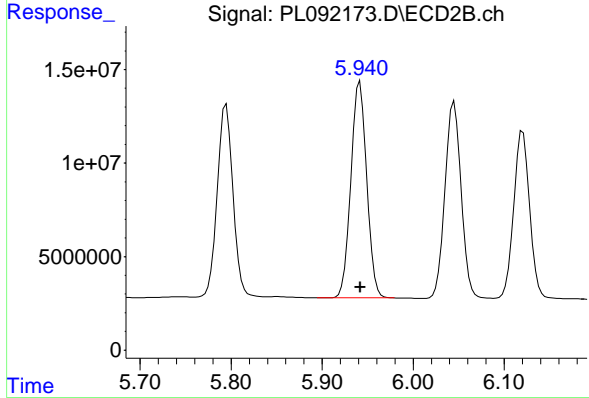
#15 Endosulfan II

R.T.: 6.798 min
 Delta R.T.: 0.000 min
 Response: 109958080
 Conc: 49.99 ng/ml

Instrument : ECD_L
 Client Sample Id : PB163810BS

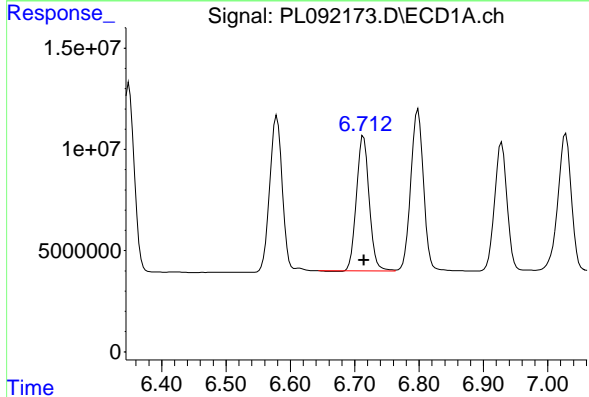
Manual Integrations
 APPROVED

Reviewed By :Abdul Mirza 10/02/2024
 Supervised By :Ankita Jodhani 10/02/2024



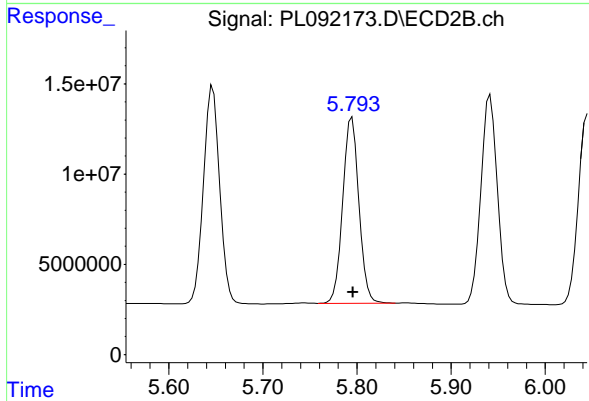
#15 Endosulfan II

R.T.: 5.941 min
 Delta R.T.: 0.000 min
 Response: 140644093
 Conc: 56.20 ng/ml



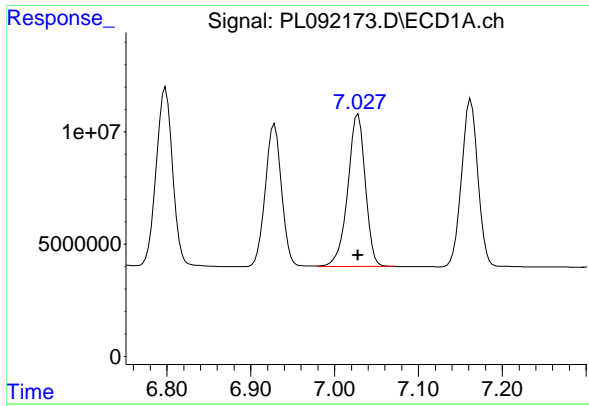
#16 4,4'-DDD

R.T.: 6.714 min
 Delta R.T.: 0.000 min
 Response: 91666338
 Conc: 51.05 ng/ml



#16 4,4'-DDD

R.T.: 5.795 min
 Delta R.T.: -0.001 min
 Response: 123404684
 Conc: 57.77 ng/ml



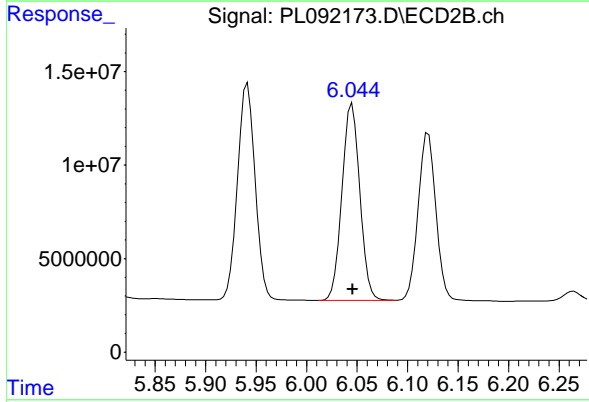
#17 4,4' -DDT

R.T.: 7.028 min
 Delta R.T.: 0.000 min
 Response: 98427557
 Conc: 53.46 ng/ml

Instrument :
 ECD_L
 Client Sample Id :
 PB163810BS

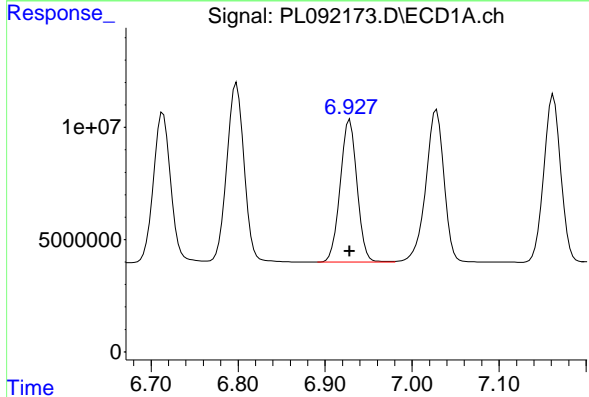
Manual Integrations
 APPROVED

Reviewed By :Abdul Mirza 10/02/2024
 Supervised By :Ankita Jodhani 10/02/2024



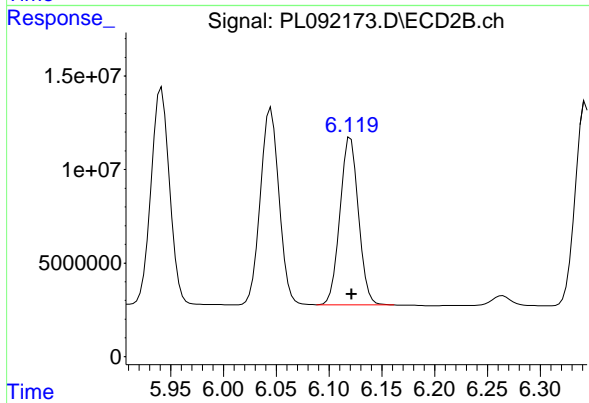
#17 4,4' -DDT

R.T.: 6.045 min
 Delta R.T.: 0.000 min
 Response: 129775146
 Conc: 56.10 ng/ml



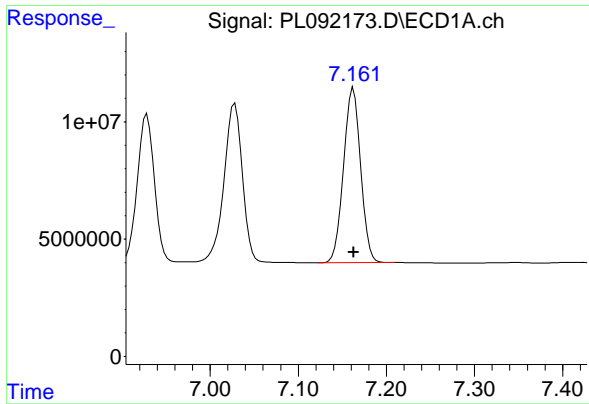
#18 Endrin aldehyde

R.T.: 6.928 min
 Delta R.T.: 0.000 min
 Response: 85745353
 Conc: 49.20 ng/ml



#18 Endrin aldehyde

R.T.: 6.121 min
 Delta R.T.: -0.001 min
 Response: 109008763
 Conc: 53.42 ng/ml



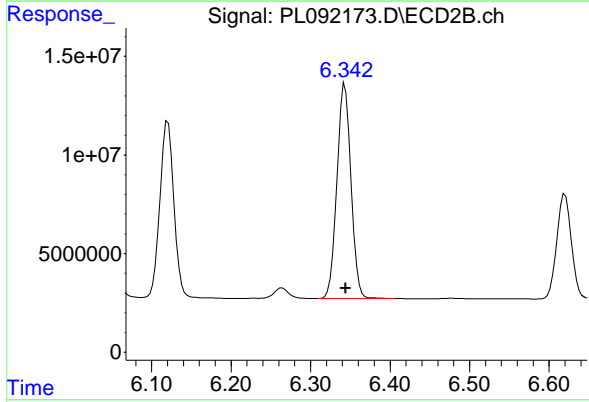
#19 Endosulfan Sulfate

R.T.: 7.163 min
 Delta R.T.: 0.000 min
 Response: 100450225
 Conc: 50.67 ng/ml

Instrument : ECD_L
 Client Sample Id : PB163810BS

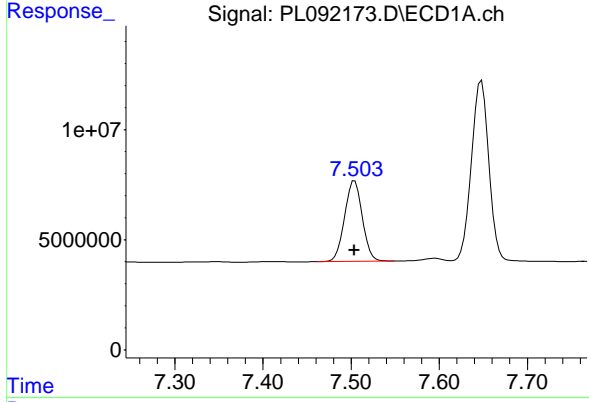
Manual Integrations
 APPROVED

Reviewed By :Abdul Mirza 10/02/2024
 Supervised By :Ankita Jodhani 10/02/2024



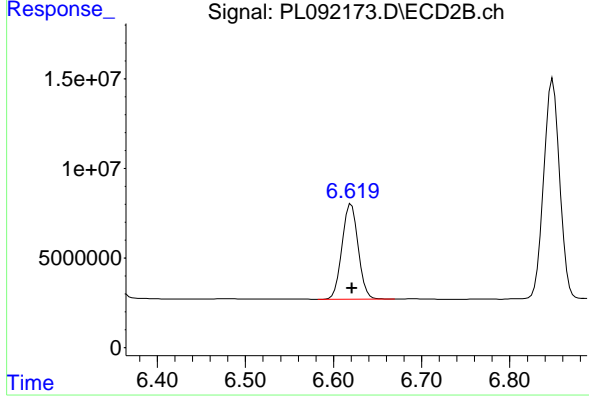
#19 Endosulfan Sulfate

R.T.: 6.343 min
 Delta R.T.: -0.001 min
 Response: 133847265
 Conc: 55.48 ng/ml



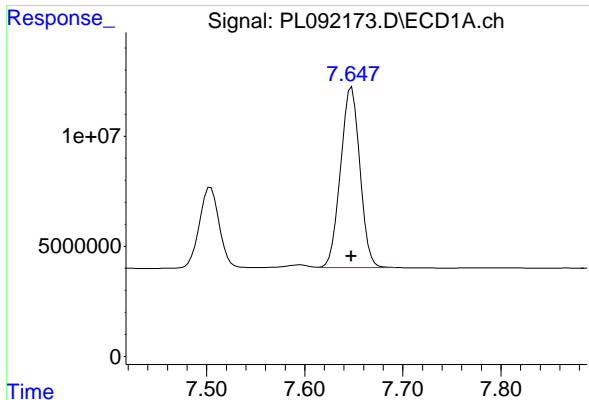
#20 Methoxychlor

R.T.: 7.504 min
 Delta R.T.: 0.000 min
 Response: 51156704
 Conc: 52.11 ng/ml



#20 Methoxychlor

R.T.: 6.620 min
 Delta R.T.: 0.000 min
 Response: 67886857
 Conc: 54.29 ng/ml



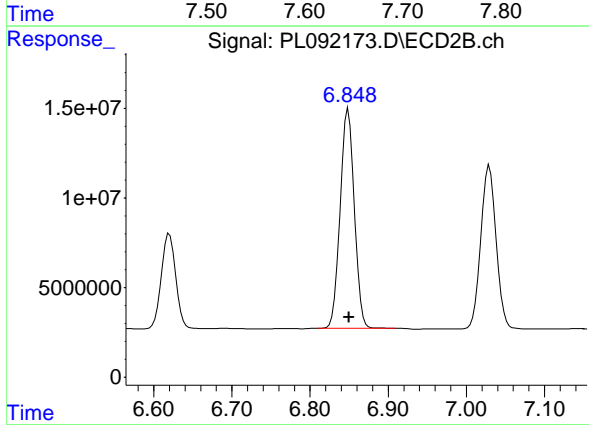
#21 Endrin ketone

R.T.: 7.648 min
 Delta R.T.: 0.000 min
 Response: 112114178
 Conc: 51.02 ng/ml

Instrument : ECD_L
 Client Sample Id : PB163810BS

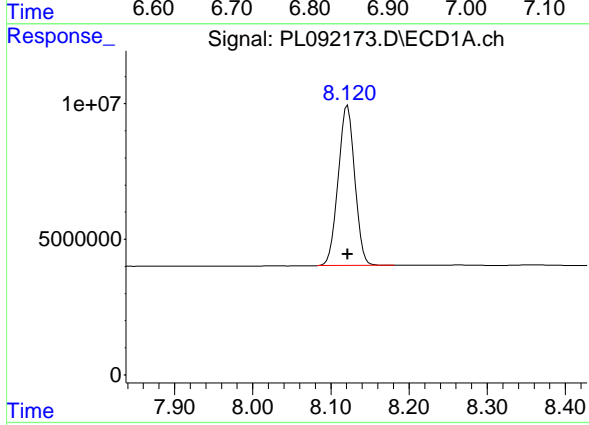
Manual Integrations
 APPROVED

Reviewed By :Abdul Mirza 10/02/2024
 Supervised By :Ankita Jodhani 10/02/2024



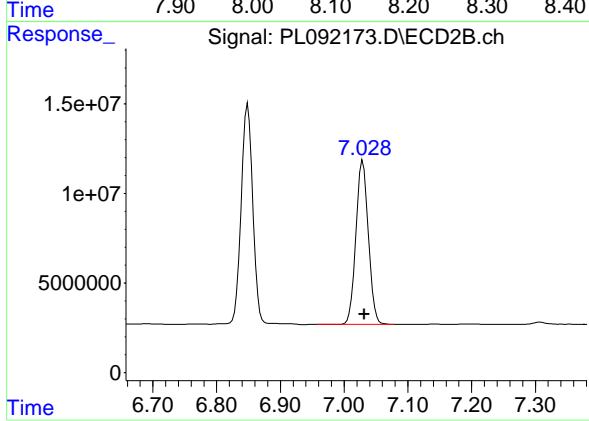
#21 Endrin ketone

R.T.: 6.849 min
 Delta R.T.: -0.001 min
 Response: 154545045
 Conc: 55.81 ng/ml



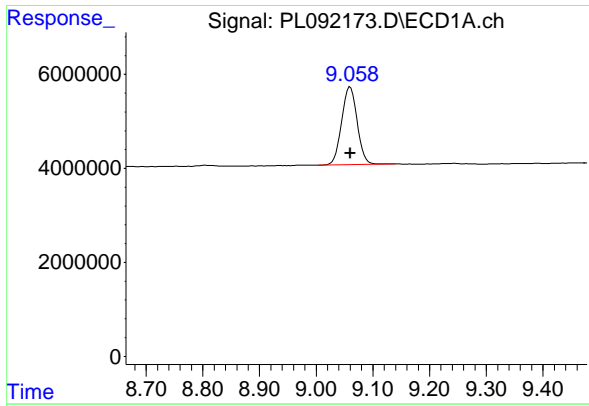
#22 Mirex

R.T.: 8.121 min
 Delta R.T.: 0.000 min
 Response: 87001397
 Conc: 48.31 ng/ml



#22 Mirex

R.T.: 7.029 min
 Delta R.T.: -0.002 min
 Response: 123966244
 Conc: 50.96 ng/ml



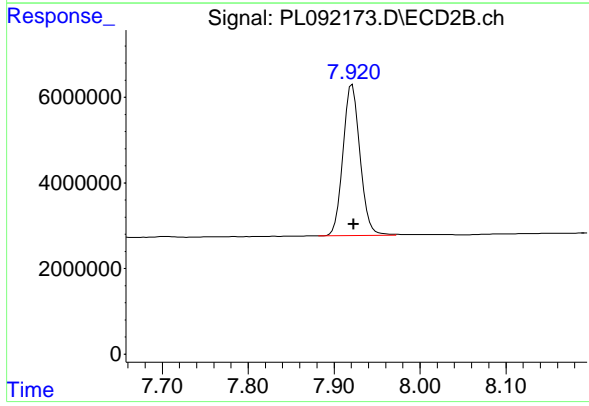
#28 Decachlorobiphenyl

R.T.: 9.060 min
 Delta R.T.: 0.000 min
 Response: 31330440
 Conc: 19.12 ng/ml

Instrument :
 ECD_L
 ClientSampleId :
 PB163810BS

Manual Integrations
 APPROVED

Reviewed By :Abdul Mirza 10/02/2024
 Supervised By :Ankita Jodhani 10/02/2024



#28 Decachlorobiphenyl

R.T.: 7.921 min
 Delta R.T.: -0.001 min
 Response: 48400527
 Conc: 19.35 ng/ml