

Data Path : Z:\pestpcbsrv\HPCHEM1\ECD\_L\Data\PL100324\  
 Data File : PL092175.D  
 Signal(s) : Signal #1: ECD1A.ch Signal #2: ECD2B.ch  
 Acq On : 01 Oct 2024 16:50  
 Operator : AR\AJ  
 Sample : P4234-01  
 Misc :  
 ALS Vial : 8 Sample Multiplier: 1

**Instrument :**  
 ECD\_L  
**ClientSampleId :**  
 EO-02-093024

**Manual Integrations**  
**APPROVED**  
 Reviewed By :Abdul Mirza 10/02/2024  
 Supervised By :Ankita Jodhani 10/02/2024

Integration File signal 1: autoint1.e  
 Integration File signal 2: autoint2.e  
 Quant Time: Oct 02 04:15:31 2024  
 Quant Method : Z:\pestpcbsrv\HPCHEM1\ECD\_L\methods\PL092324.M  
 Quant Title : GC Extractables  
 QLast Update : Mon Sep 23 16:44:57 2024  
 Response via : Initial Calibration  
 Integrator: ChemStation

Volume Inj. : 1 µl  
 Signal #1 Phase : ZB-MR2 Signal #2 Phase: ZB-MR1  
 Signal #1 Info : 30M x 0.32mm x0.2 Signal #2 Info : 30M x 0.32mm x0.5µm

Compound	RT#1	RT#2	Resp#1	Resp#2	ng/ml	ng/ml
-----						
System Monitoring Compounds						
1) SA Tetrachlo...	3.541	2.780	26928275	34824174	12.104m	13.885m
28) SA Decachlor...	9.057	7.920	17091657	25986970	10.433m	10.387m
Target Compounds						
16) A 4,4'-DDD	6.710	5.792	3216841	2241784	1.791m	1.049m#
17) MA 4,4'-DDT	7.025	6.040	2563264	3862867	1.392m	1.670m
-----						

(f)=RT Delta > 1/2 Window (#)=Amounts differ by > 25% (m)=manual int.

Data Path : Z:\pestpcbsrv\HPCHEM1\ECD\_L\Data\PL100324\  
 Data File : PL092175.D  
 Signal(s) : Signal #1: ECD1A.ch Signal #2: ECD2B.ch  
 Acq On : 01 Oct 2024 16:50  
 Operator : AR\AJ  
 Sample : P4234-01  
 Misc :  
 ALS Vial : 8 Sample Multiplier: 1

**Instrument :**

ECD\_L

**ClientSampleId :**

EO-02-093024

**Manual Integrations**

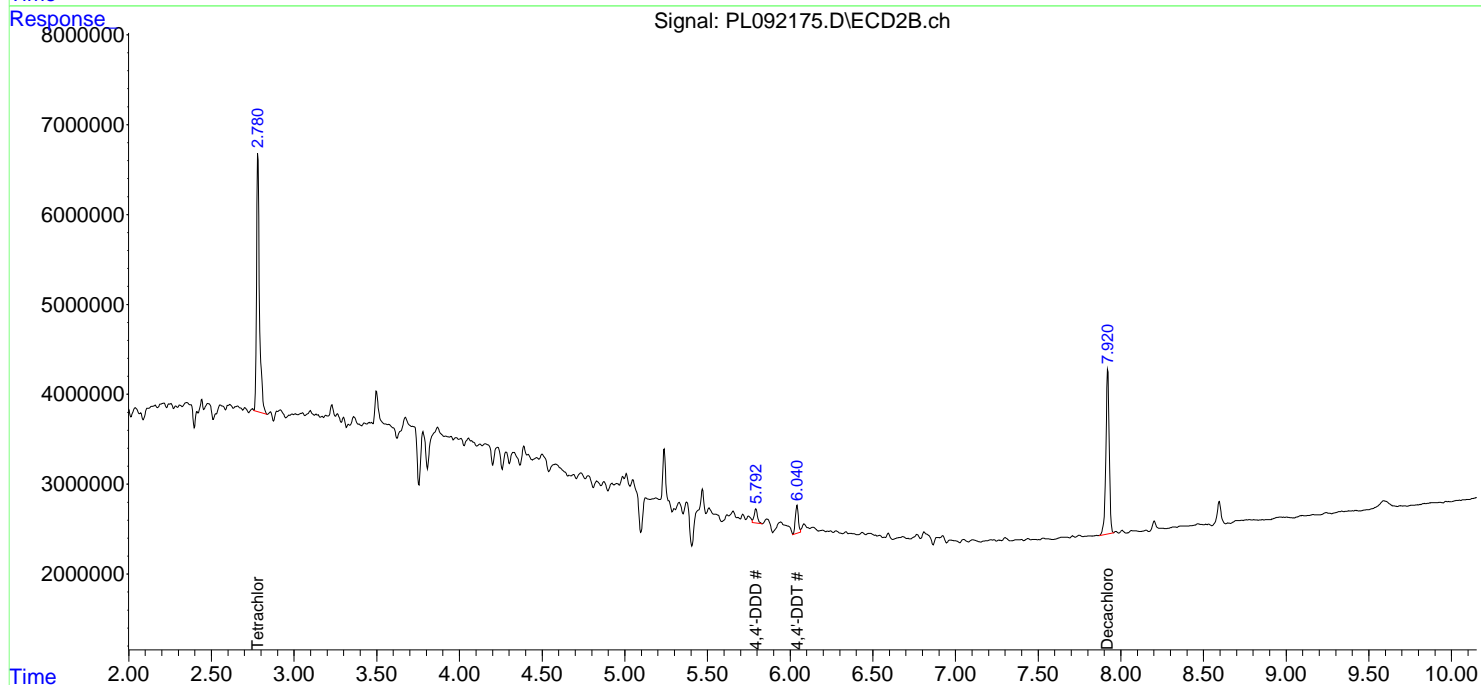
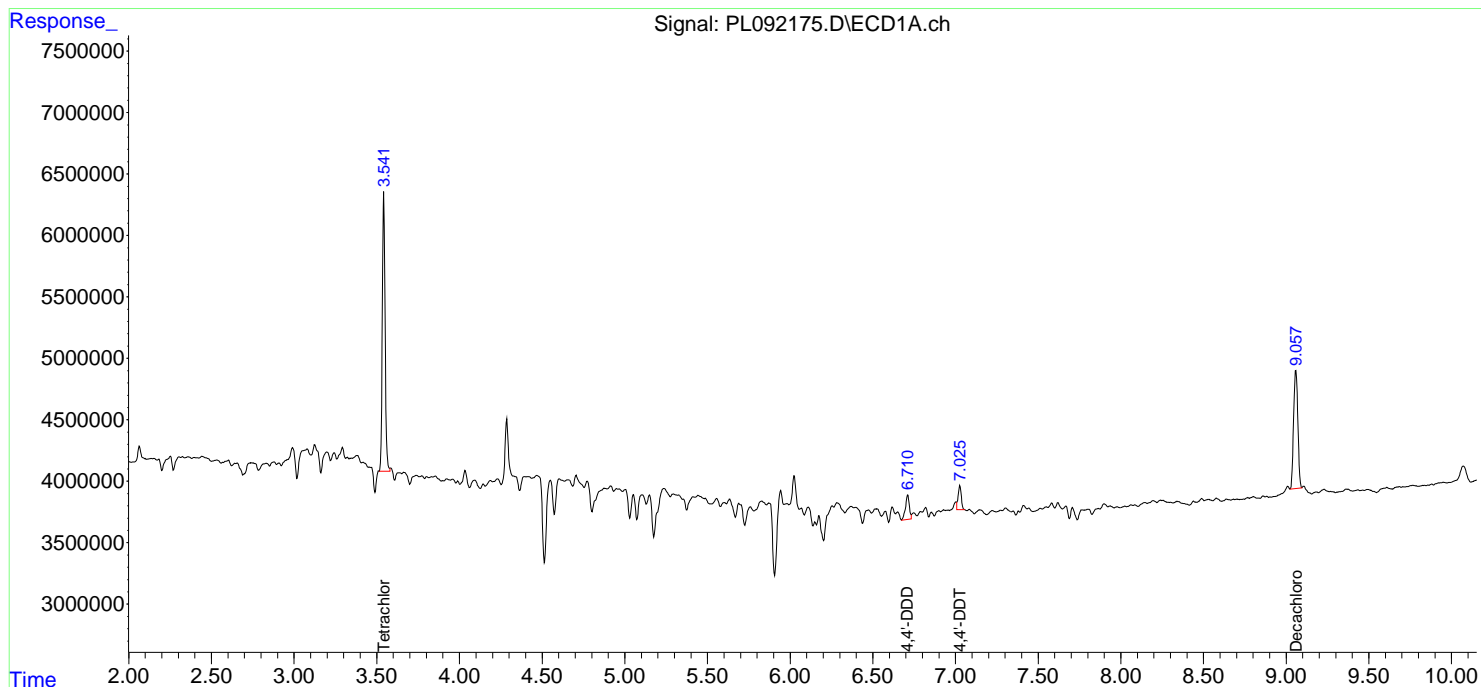
**APPROVED**

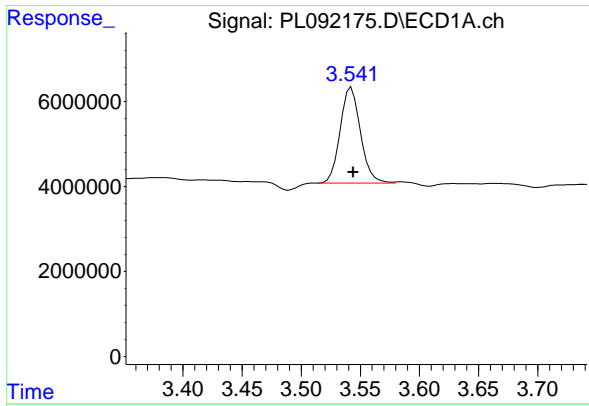
Reviewed By :Abdul Mirza 10/02/2024

Supervised By :Ankita Jodhani 10/02/2024

Integration File signal 1: autoint1.e  
 Integration File signal 2: autoint2.e  
 Quant Time: Oct 02 04:15:31 2024  
 Quant Method : Z:\pestpcbsrv\HPCHEM1\ECD\_L\methods\PL092324.M  
 Quant Title : GC Extractables  
 QLast Update : Mon Sep 23 16:44:57 2024  
 Response via : Initial Calibration  
 Integrator: ChemStation

Volume Inj. : 1 µl  
 Signal #1 Phase : ZB-MR2 Signal #2 Phase: ZB-MR1  
 Signal #1 Info : 30M x 0.32mm x0.2 Signal #2 Info : 30M x 0.32mm x0.5µm





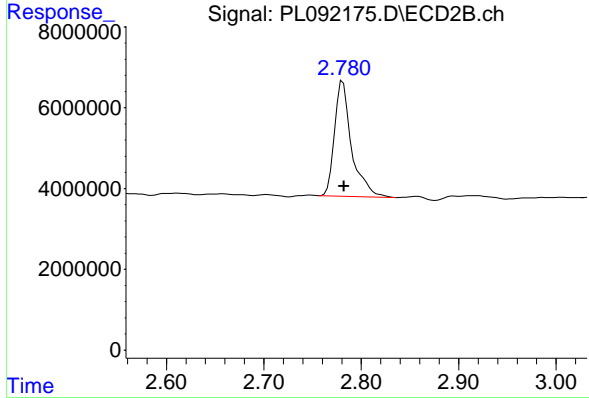
#1 Tetrachloro-m-xylene

R.T.: 3.541 min  
 Delta R.T.: -0.003 min  
 Response: 26928275  
 Conc: 12.10 ng/ml

Instrument : ECD\_L  
 Client Sample Id : EO-02-093024

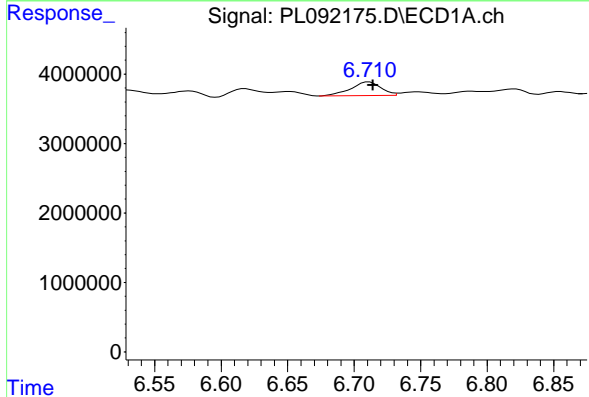
Manual Integrations  
 APPROVED

Reviewed By :Abdul Mirza 10/02/2024  
 Supervised By :Ankita Jodhani 10/02/2024



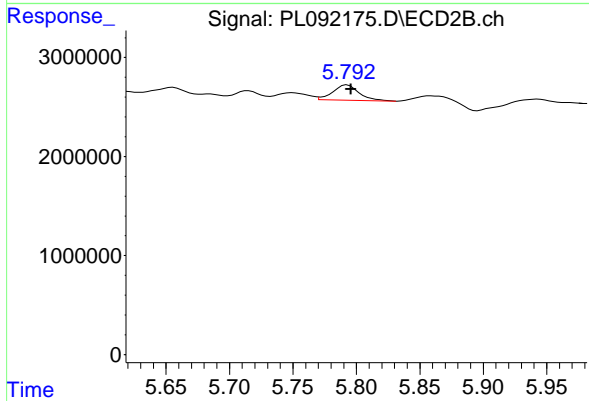
#1 Tetrachloro-m-xylene

R.T.: 2.780 min  
 Delta R.T.: -0.003 min  
 Response: 34824174  
 Conc: 13.88 ng/ml



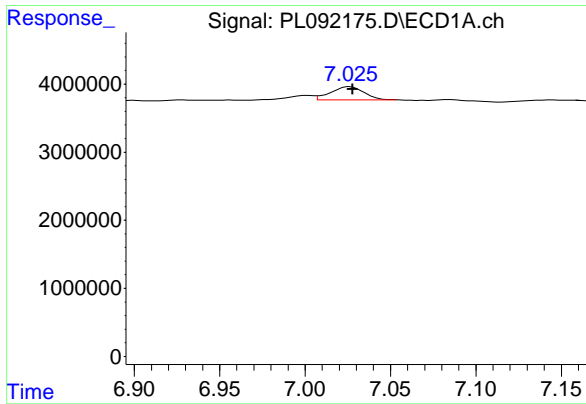
#16 4,4'-DDD

R.T.: 6.710 min  
 Delta R.T.: -0.004 min  
 Response: 3216841  
 Conc: 1.79 ng/ml



#16 4,4'-DDD

R.T.: 5.792 min  
 Delta R.T.: -0.004 min  
 Response: 2241784  
 Conc: 1.05 ng/ml



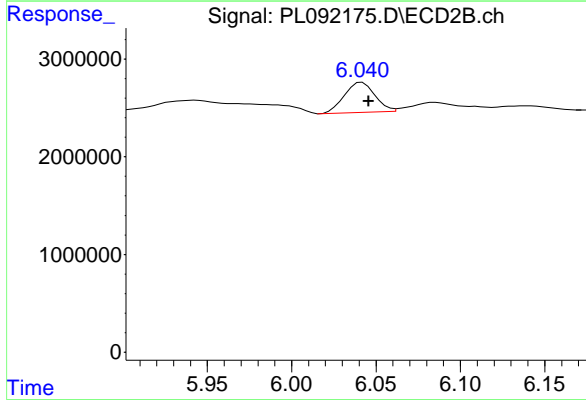
#17 4,4' -DDT

R.T.: 7.025 min  
 Delta R.T.: -0.003 min  
 Response: 2563264  
 Conc: 1.39 ng/ml m

Instrument : ECD\_L  
 Client SampleId : EO-02-093024

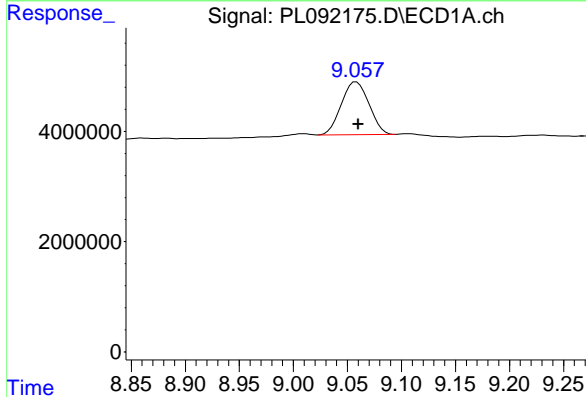
Manual Integrations  
 APPROVED

Reviewed By :Abdul Mirza 10/02/2024  
 Supervised By :Ankita Jodhani 10/02/2024



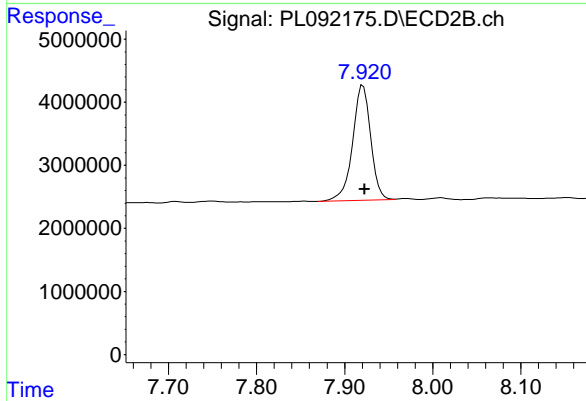
#17 4,4' -DDT

R.T.: 6.040 min  
 Delta R.T.: -0.005 min  
 Response: 3862867  
 Conc: 1.67 ng/ml m



#28 Decachlorobiphenyl

R.T.: 9.057 min  
 Delta R.T.: -0.003 min  
 Response: 17091657  
 Conc: 10.43 ng/ml m



#28 Decachlorobiphenyl

R.T.: 7.920 min  
 Delta R.T.: -0.003 min  
 Response: 25986970  
 Conc: 10.39 ng/ml m