

Data Path : Z:\pestpcbsrv\HPCHEM1\ECD_L\Data\PL100623\
 Data File : PL085761.D
 Signal(s) : Signal #1: ECD1A.ch Signal #2: ECD2B.ch
 Acq On : 06 Oct 2023 15:45
 Operator : AR\AJ
 Sample : PB156052BS
 Misc :
 ALS Vial : 16 Sample Multiplier: 1

Instrument :
 ECD_L
 ClientSampleId :

Integration File signal 1: autoint1.e
 Integration File signal 2: autoint2.e
 Quant Time: Oct 06 16:07:05 2023
 Quant Method : Z:\pestpcbsrv\HPCHEM1\ECD_L\methods\PL100323.M
 Quant Title : GC Extractables
 QLast Update : Wed Oct 04 05:29:39 2023
 Response via : Initial Calibration
 Integrator: ChemStation

Volume Inj. : 1 µl
 Signal #1 Phase : ZB-MR2 Signal #2 Phase: ZB-MR1
 Signal #1 Info : 30M x 0.32mm x0.2 Signal #2 Info : 30M x 0.32mm x0.5µm

Compound	RT#1	RT#2	Resp#1	Resp#2	ng/ml	ng/ml

System Monitoring Compounds						
1) SA Tetrachlo...	3.358	2.623	52081381	17017029	17.511	18.217
28) SA Decachlor...	8.859	7.774	45106415	18335194	20.710	19.865
Target Compounds						
2) A alpha-BHC	3.812	3.122	218.5E6	65924284	50.909	52.399
3) MA gamma-BHC...	4.144	3.449	199.6E6	62685647	48.289	50.826
4) MA Heptachlor	4.730	3.786	206.7E6	62486233	53.455	53.726
5) MB Aldrin	5.071	4.062	187.7E6	56780929	48.430	50.776
6) B beta-BHC	4.346	3.751	85057818	27948640	51.437	53.687
7) B delta-BHC	4.589	3.976	199.6E6	59852410	52.046	52.092
8) B Heptachlo...	5.500	4.567	171.4E6	53429443	49.674	53.195
9) A Endosulfan I	5.884	4.935	161.6E6	50039001	49.972	46.646
10) B gamma-Chl...	5.757	4.819	174.9E6	54236477	51.118	54.763
11) B alpha-Chl...	5.837	4.882	171.0E6	53951968	50.032	49.464
12) B 4,4'-DDE	6.020	5.082	147.2E6	47355073	52.648	57.670
13) MA Dieldrin	6.161	5.200	154.4E6	50563151	46.976	52.115
14) MA Endrin	6.389	5.474	136.0E6	47644831	47.714	52.997
15) B Endosulfa...	6.611	5.771	126.5E6	45420650	45.919	47.764
16) A 4,4'-DDD	6.539	5.637	113.6E6	41037179	56.375	58.958
17) MA 4,4'-DDT	6.853	5.888	125.0E6	44746764	53.015	56.587
18) B Endrin al...	6.743	5.953	100.2E6	37426856	49.455	50.190
19) B Endosulfa...	6.979	6.177	127.3E6	47267291	50.726	52.396
20) A Methoxychlor	7.339	6.472	67378314	26416971	48.244	50.215
21) B Endrin ke...	7.460	6.679	133.6E6	55966169	46.394	48.691
22) Mirex	7.933	6.856	107.8E6	45816206	48.689	48.577
23) Chlordane-1	0.000	3.624	0	69489	N.D.	2.132 #
24) Chlordane-2	5.071f	4.187	187.7E6	172368	1443.607	4.429 #
25) Chlordane-3	5.757	4.819	174.9E6	54236477	342.800	536.741 #
26) Chlordane-4	5.837	4.882	171.0E6	53951968	269.514	465.970 #
27) Chlordane-5	0.000	5.556	0	16529	N.D.	0.593 #

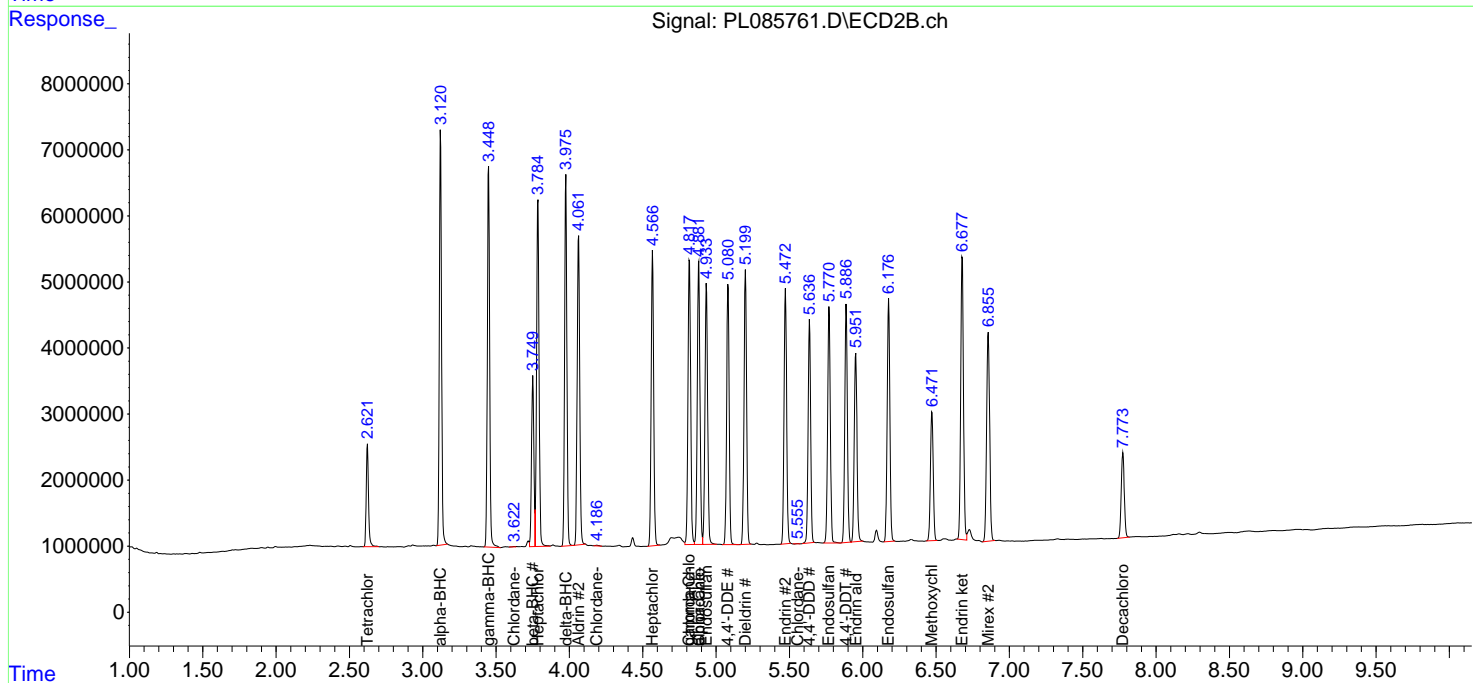
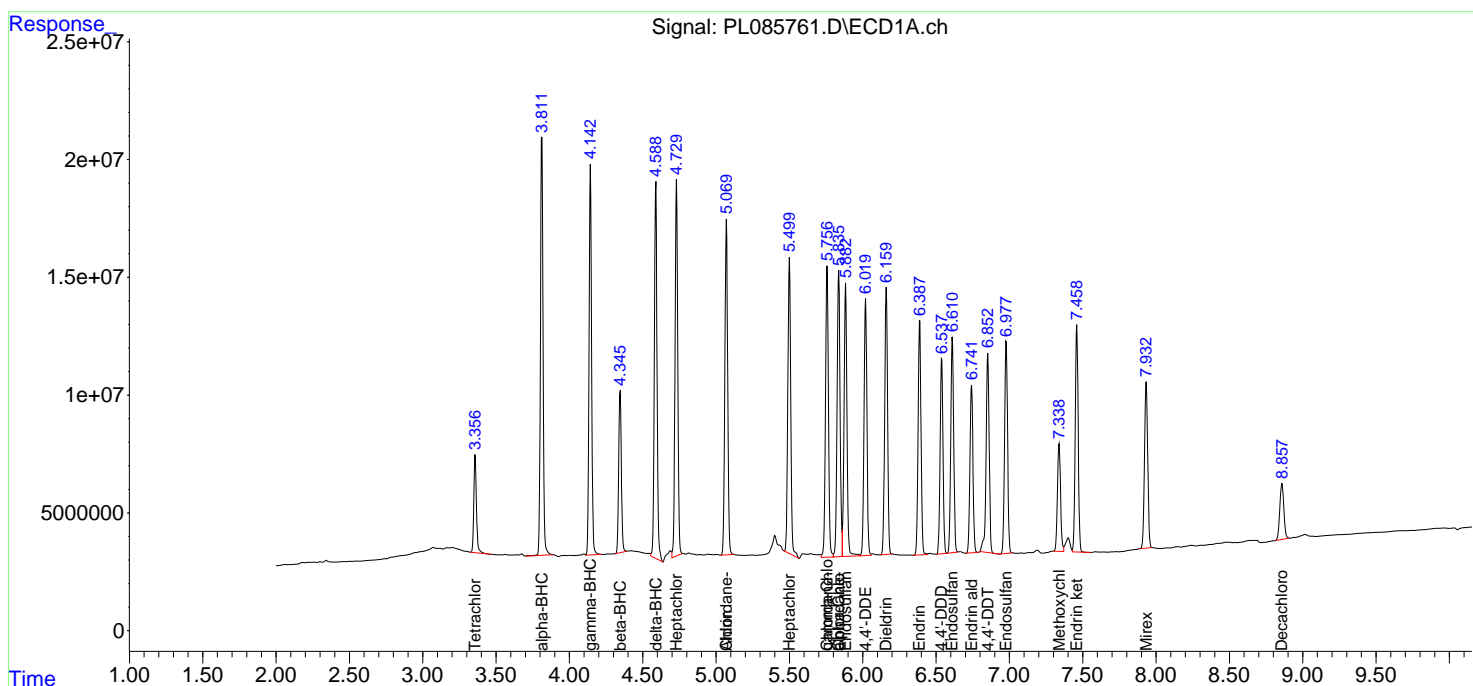
(f)=RT Delta > 1/2 Window (#)=Amounts differ by > 25% (m)=manual int.

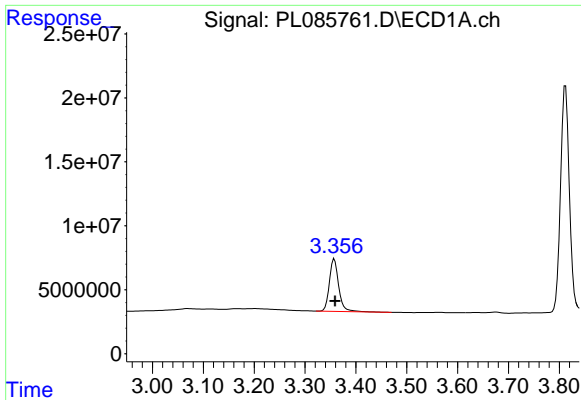
Data Path : Z:\pestpcbsrv\HPCHEM1\ECD_L\Data\PL100623\
 Data File : PL085761.D
 Signal(s) : Signal #1: ECD1A.ch Signal #2: ECD2B.ch
 Acq On : 06 Oct 2023 15:45
 Operator : AR\AJ
 Sample : PB156052BS
 Misc :
 ALS Vial : 16 Sample Multiplier: 1

Instrument :
 ECD_L
 ClientSampleId :

Integration File signal 1: autoint1.e
 Integration File signal 2: autoint2.e
 Quant Time: Oct 06 16:07:05 2023
 Quant Method : Z:\pestpcbsrv\HPCHEM1\ECD_L\methods\PL100323.M
 Quant Title : GC Extractables
 QLast Update : Wed Oct 04 05:29:39 2023
 Response via : Initial Calibration
 Integrator: ChemStation

Volume Inj. : 1 µl
 Signal #1 Phase : ZB-MR2 Signal #2 Phase: ZB-MR1
 Signal #1 Info : 30M x 0.32mm x0.2 Signal #2 Info : 30M x 0.32mm x0.5µm

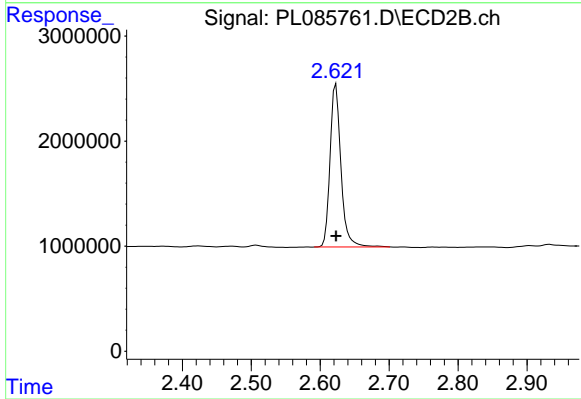




#1 Tetrachloro-m-xylene

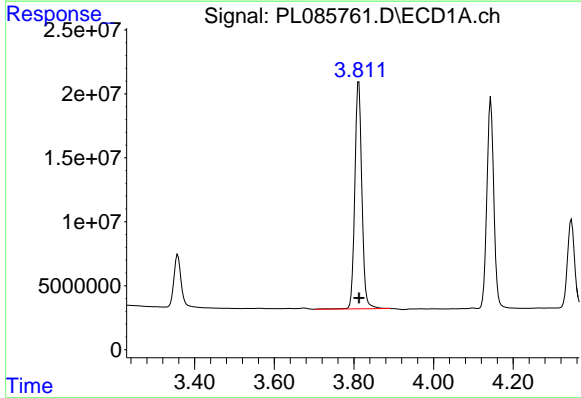
R.T.: 3.358 min
 Delta R.T.: -0.001 min
 Response: 52081381
 Conc: 17.51 ng/ml

Instrument :
 ECD_L
 ClientSampleId :



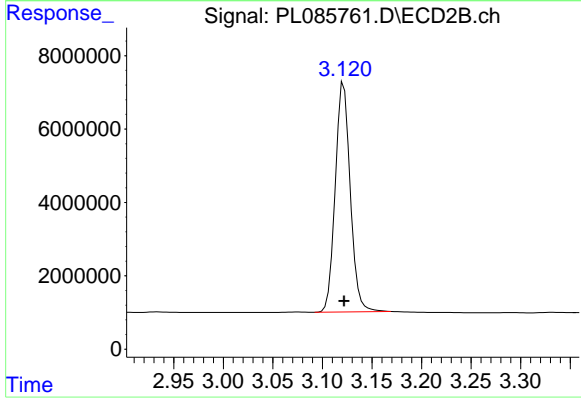
#1 Tetrachloro-m-xylene

R.T.: 2.623 min
 Delta R.T.: 0.000 min
 Response: 17017029
 Conc: 18.22 ng/ml



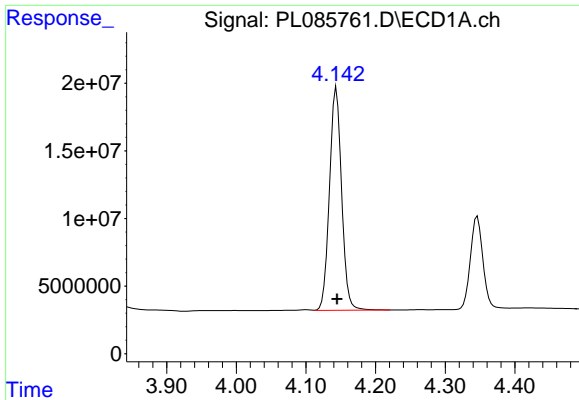
#2 alpha-BHC

R.T.: 3.812 min
 Delta R.T.: 0.000 min
 Response: 218496054
 Conc: 50.91 ng/ml



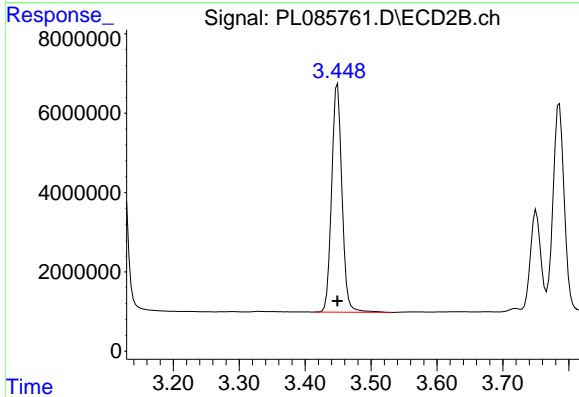
#2 alpha-BHC

R.T.: 3.122 min
 Delta R.T.: 0.000 min
 Response: 65924284
 Conc: 52.40 ng/ml

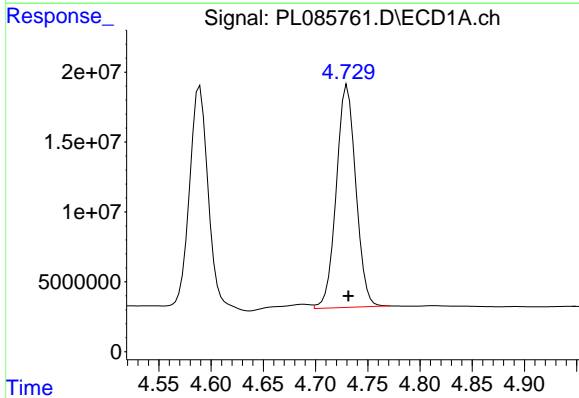


#3 gamma-BHC (Lindane)
 R.T.: 4.144 min
 Delta R.T.: -0.001 min
 Response: 199594837
 Conc: 48.29 ng/ml

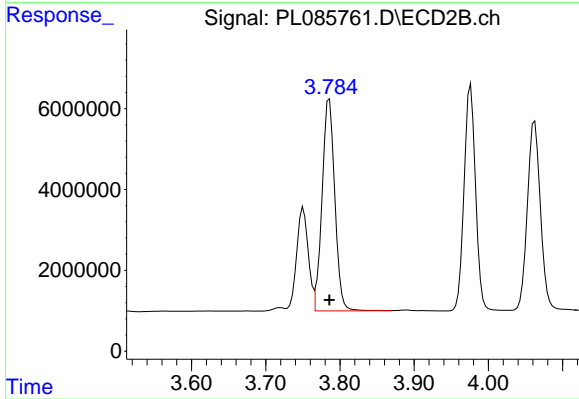
Instrument :
 ECD_L
 ClientSampleId :



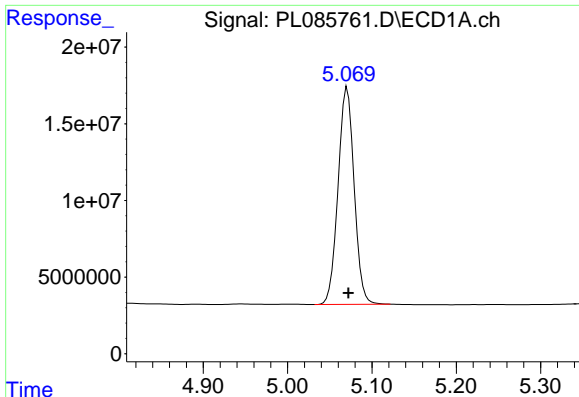
#3 gamma-BHC (Lindane)
 R.T.: 3.449 min
 Delta R.T.: 0.000 min
 Response: 62685647
 Conc: 50.83 ng/ml



#4 Heptachlor
 R.T.: 4.730 min
 Delta R.T.: -0.001 min
 Response: 206743745
 Conc: 53.46 ng/ml



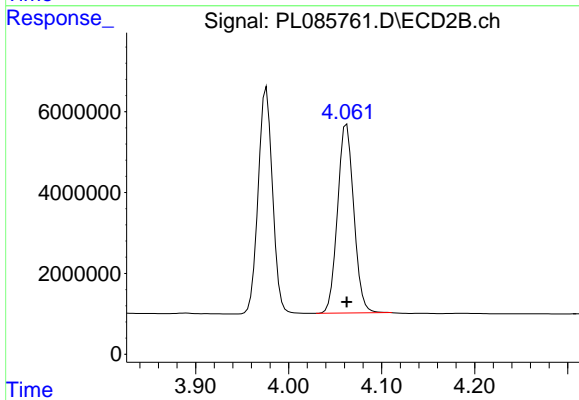
#4 Heptachlor
 R.T.: 3.786 min
 Delta R.T.: 0.000 min
 Response: 62486233
 Conc: 53.73 ng/ml



#5 Aldrin

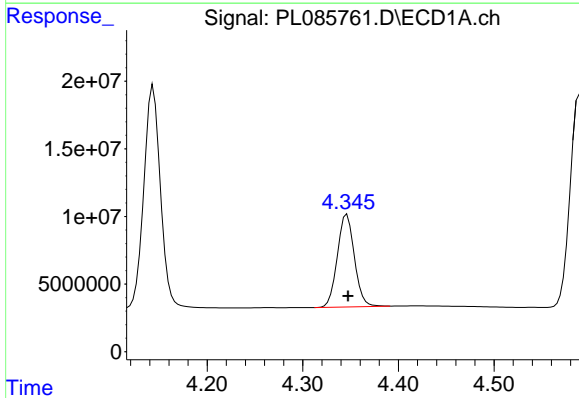
R.T.: 5.071 min
 Delta R.T.: -0.001 min
 Response: 187732253
 Conc: 48.43 ng/ml

Instrument :
 ECD_L
 ClientSampleId :



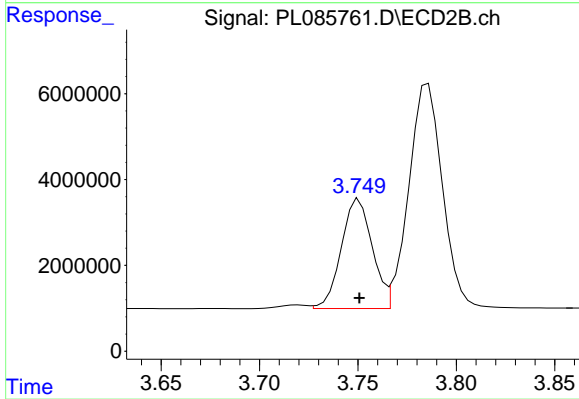
#5 Aldrin

R.T.: 4.062 min
 Delta R.T.: 0.000 min
 Response: 56780929
 Conc: 50.78 ng/ml



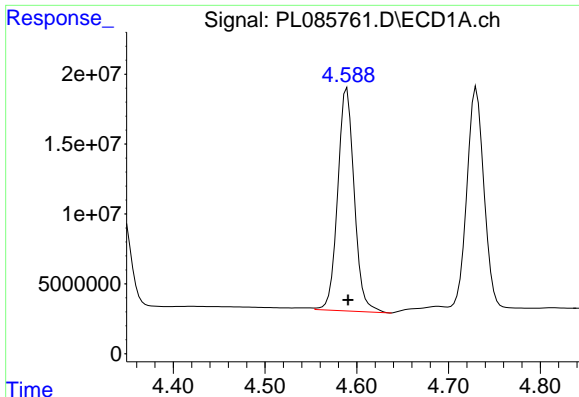
#6 beta-BHC

R.T.: 4.346 min
 Delta R.T.: 0.000 min
 Response: 85057818
 Conc: 51.44 ng/ml



#6 beta-BHC

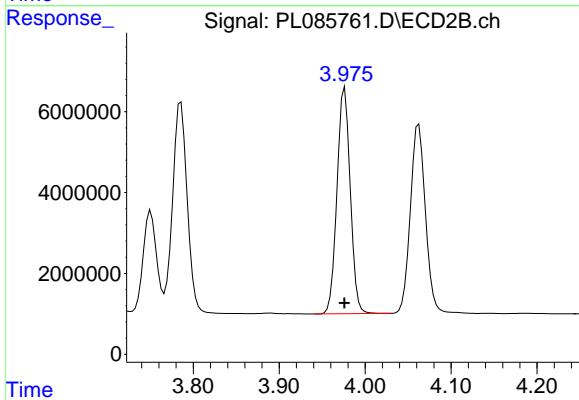
R.T.: 3.751 min
 Delta R.T.: 0.000 min
 Response: 27948640
 Conc: 53.69 ng/ml



#7 delta-BHC

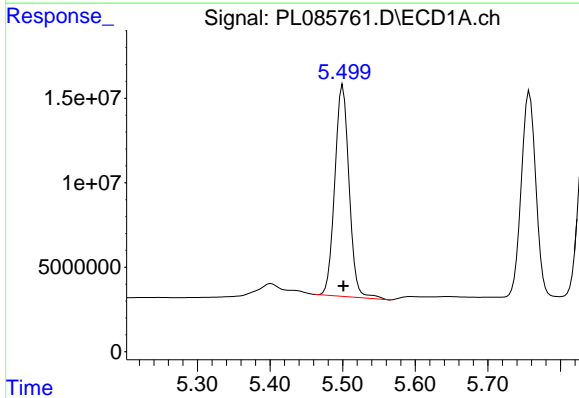
R.T.: 4.589 min
 Delta R.T.: 0.000 min
 Response: 199566359
 Conc: 52.05 ng/ml

Instrument :
 ECD_L
 ClientSampleId :



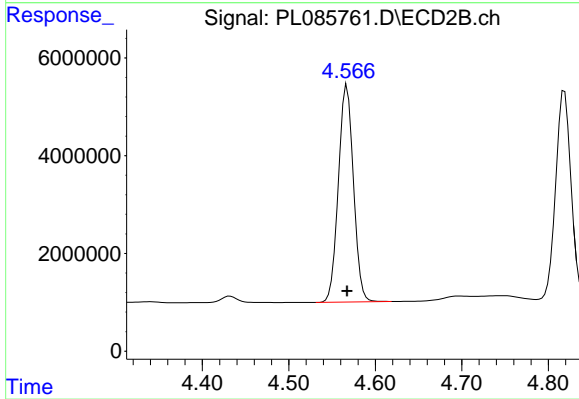
#7 delta-BHC

R.T.: 3.976 min
 Delta R.T.: 0.000 min
 Response: 59852410
 Conc: 52.09 ng/ml



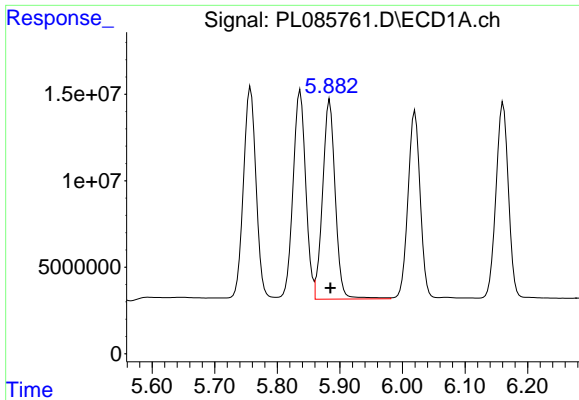
#8 Heptachlor epoxide

R.T.: 5.500 min
 Delta R.T.: 0.000 min
 Response: 171367161
 Conc: 49.67 ng/ml



#8 Heptachlor epoxide

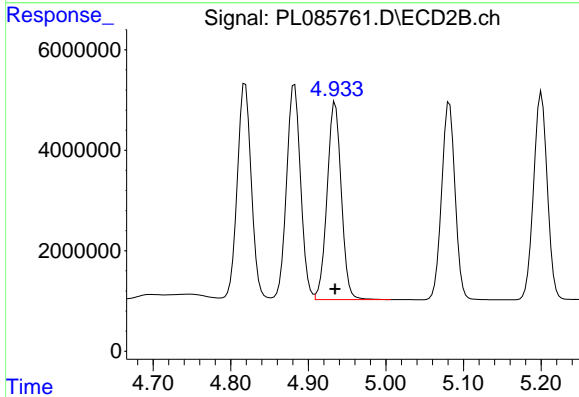
R.T.: 4.567 min
 Delta R.T.: 0.000 min
 Response: 53429443
 Conc: 53.20 ng/ml



#9 Endosulfan I

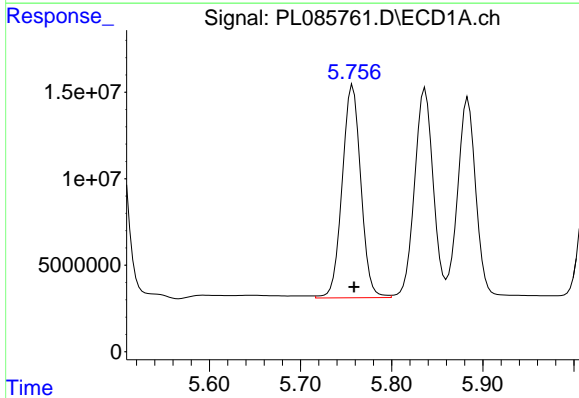
R.T.: 5.884 min
 Delta R.T.: -0.001 min
 Response: 161611774
 Conc: 49.97 ng/ml

Instrument :
 ECD_L
 ClientSampleId :



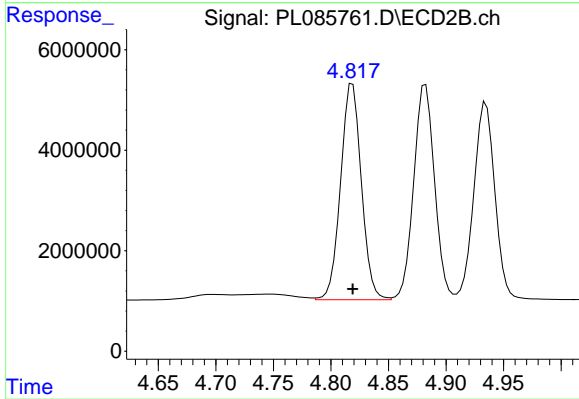
#9 Endosulfan I

R.T.: 4.935 min
 Delta R.T.: 0.000 min
 Response: 50039001
 Conc: 46.65 ng/ml



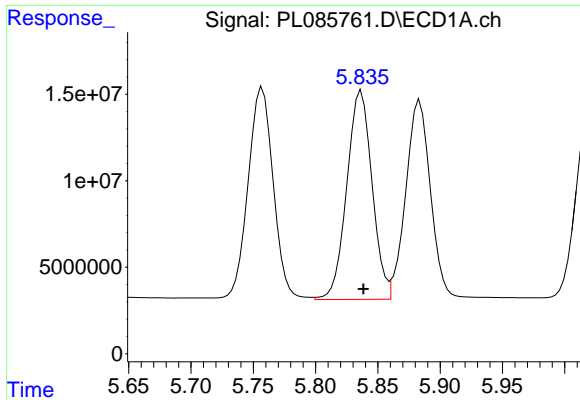
#10 gamma-Chlordane

R.T.: 5.757 min
 Delta R.T.: -0.002 min
 Response: 174897043
 Conc: 51.12 ng/ml



#10 gamma-Chlordane

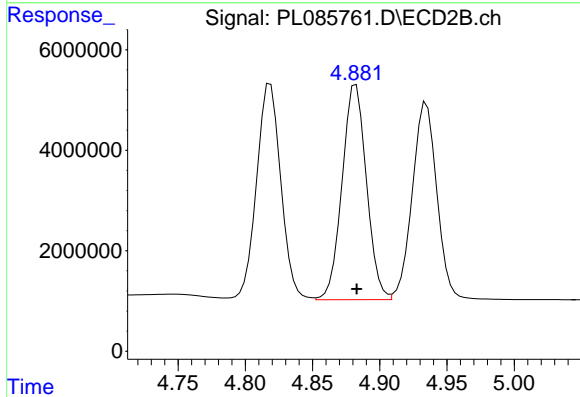
R.T.: 4.819 min
 Delta R.T.: 0.000 min
 Response: 54236477
 Conc: 54.76 ng/ml



#11 alpha-Chlordane

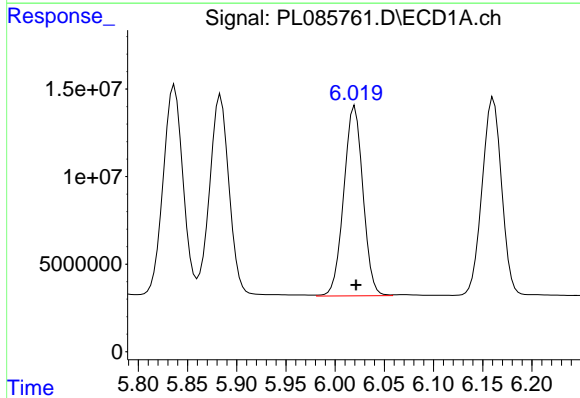
R.T.: 5.837 min
 Delta R.T.: -0.002 min
 Response: 170990949
 Conc: 50.03 ng/ml

Instrument :
 ECD_L
 ClientSampleId :



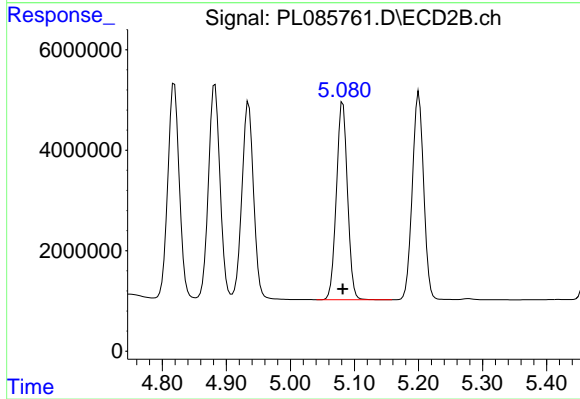
#11 alpha-Chlordane

R.T.: 4.882 min
 Delta R.T.: 0.000 min
 Response: 53951968
 Conc: 49.46 ng/ml



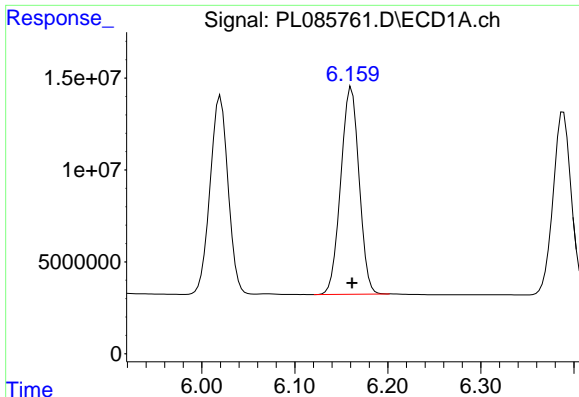
#12 4,4'-DDE

R.T.: 6.020 min
 Delta R.T.: -0.001 min
 Response: 147231408
 Conc: 52.65 ng/ml



#12 4,4'-DDE

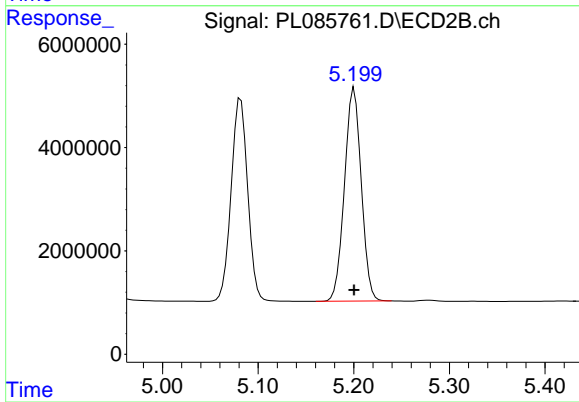
R.T.: 5.082 min
 Delta R.T.: 0.000 min
 Response: 47355073
 Conc: 57.67 ng/ml



#13 Dieldrin

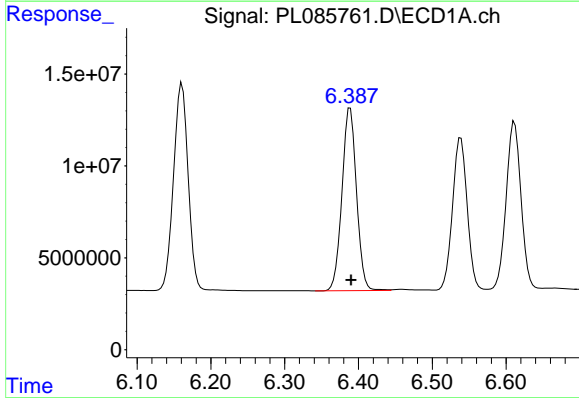
R.T.: 6.161 min
 Delta R.T.: 0.000 min
 Response: 154362027
 Conc: 46.98 ng/ml

Instrument :
 ECD_L
 ClientSampleId :



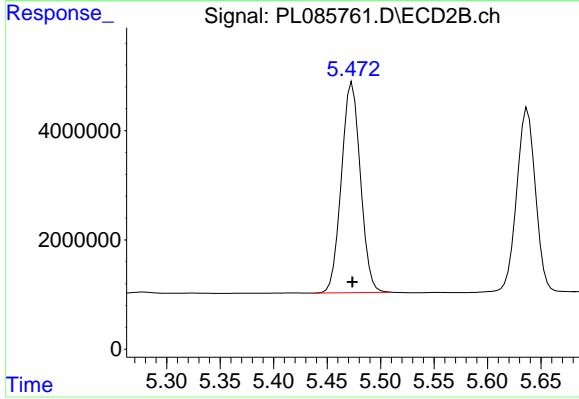
#13 Dieldrin

R.T.: 5.200 min
 Delta R.T.: 0.000 min
 Response: 50563151
 Conc: 52.11 ng/ml



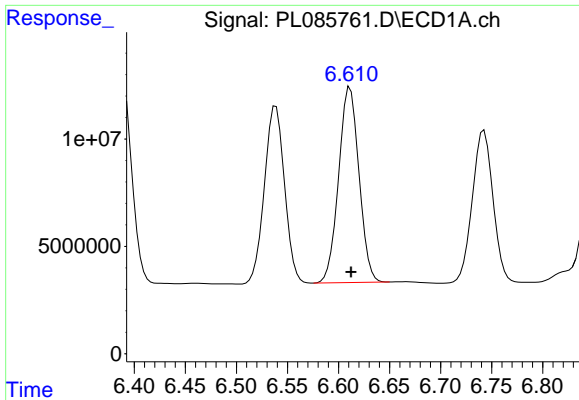
#14 Endrin

R.T.: 6.389 min
 Delta R.T.: -0.001 min
 Response: 135972982
 Conc: 47.71 ng/ml



#14 Endrin

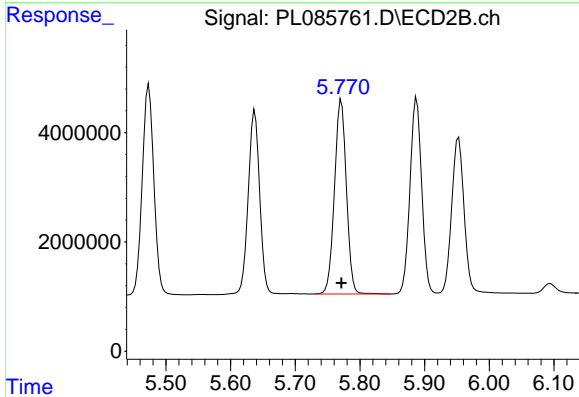
R.T.: 5.474 min
 Delta R.T.: 0.000 min
 Response: 47644831
 Conc: 53.00 ng/ml



#15 Endosulfan II

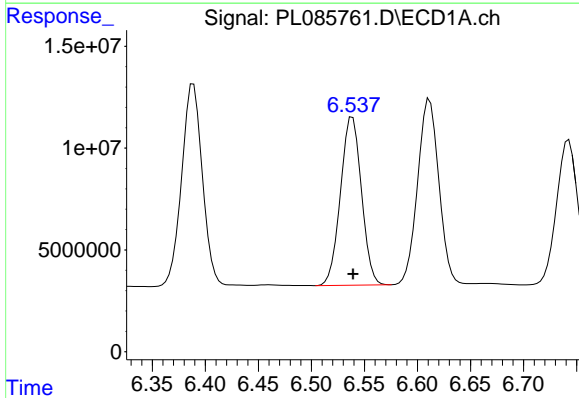
R.T.: 6.611 min
Delta R.T.: -0.001 min
Response: 126529693
Conc: 45.92 ng/ml

Instrument :
ECD_L
ClientSampleId :



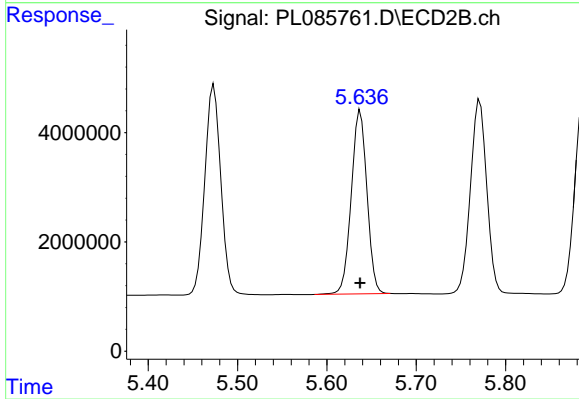
#15 Endosulfan II

R.T.: 5.771 min
Delta R.T.: 0.000 min
Response: 45420650
Conc: 47.76 ng/ml



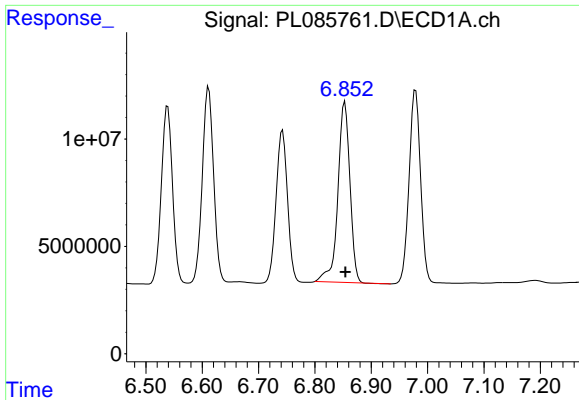
#16 4,4'-DDD

R.T.: 6.539 min
Delta R.T.: 0.000 min
Response: 113576939
Conc: 56.38 ng/ml



#16 4,4'-DDD

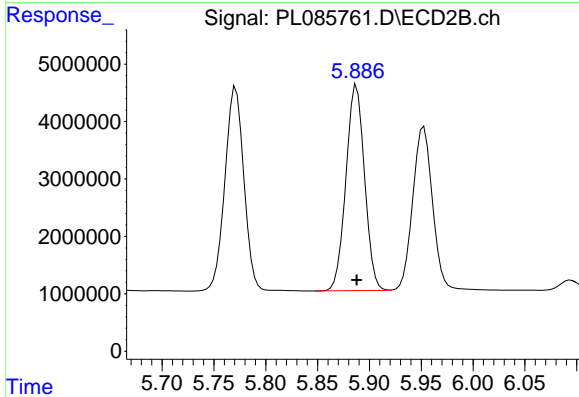
R.T.: 5.637 min
Delta R.T.: 0.000 min
Response: 41037179
Conc: 58.96 ng/ml



#17 4,4'-DDT

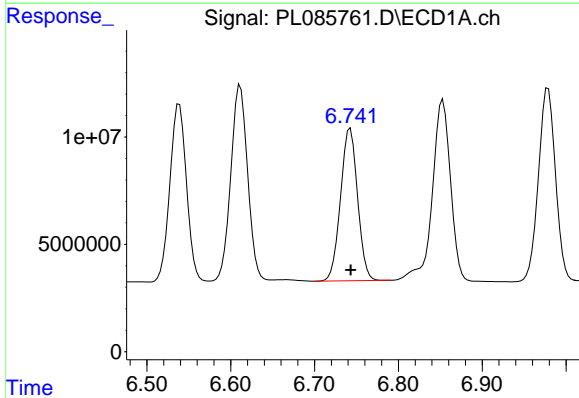
R.T.: 6.853 min
 Delta R.T.: 0.000 min
 Response: 124962117
 Conc: 53.02 ng/ml

Instrument :
 ECD_L
 ClientSampleId :



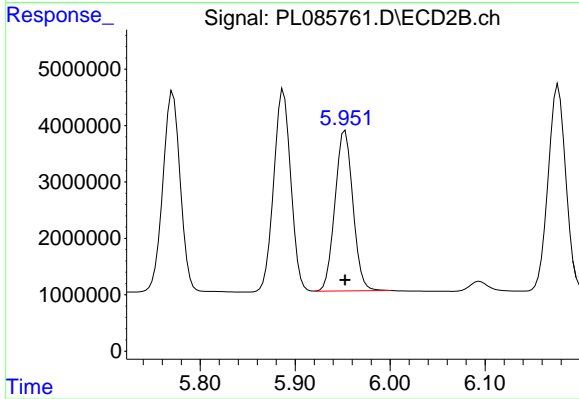
#17 4,4'-DDT

R.T.: 5.888 min
 Delta R.T.: 0.000 min
 Response: 44746764
 Conc: 56.59 ng/ml



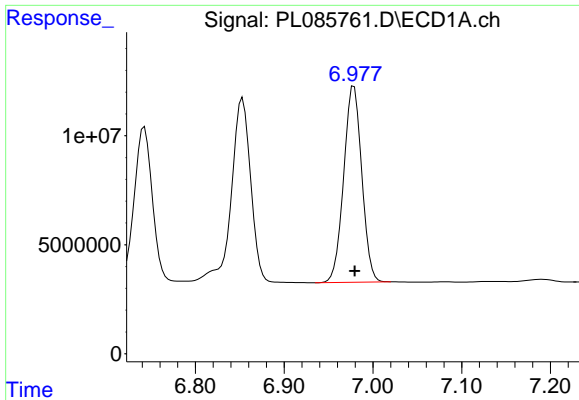
#18 Endrin aldehyde

R.T.: 6.743 min
 Delta R.T.: 0.000 min
 Response: 100234555
 Conc: 49.46 ng/ml



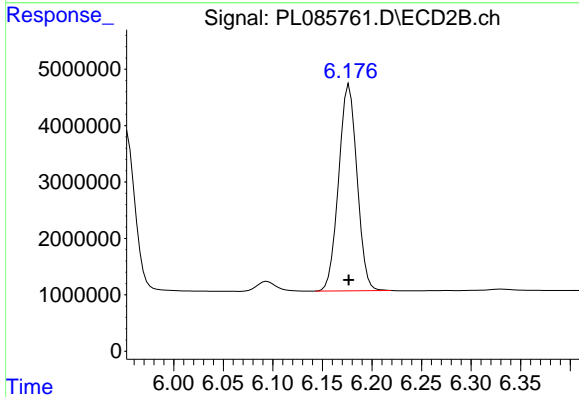
#18 Endrin aldehyde

R.T.: 5.953 min
 Delta R.T.: 0.000 min
 Response: 37426856
 Conc: 50.19 ng/ml

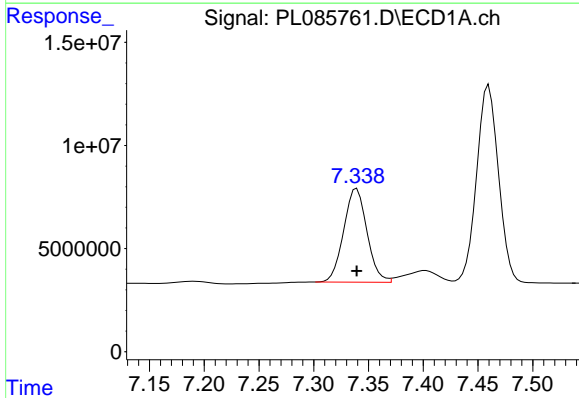


#19 Endosulfan Sulfate
 R.T.: 6.979 min
 Delta R.T.: 0.000 min
 Response: 127308508
 Conc: 50.73 ng/ml

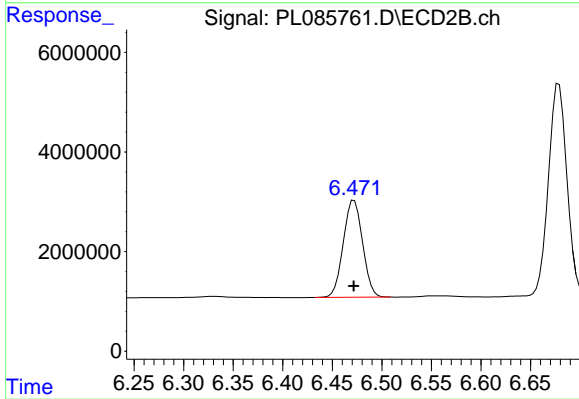
Instrument :
 ECD_L
 ClientSampleId :



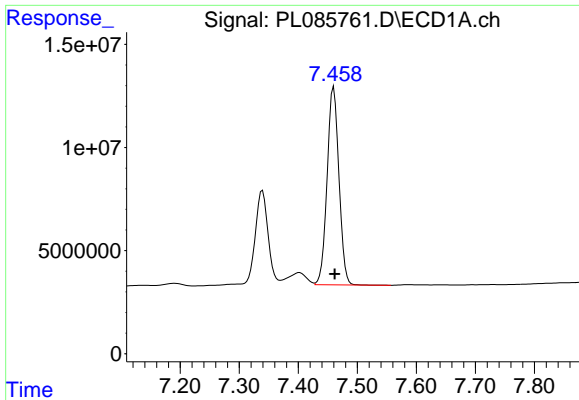
#19 Endosulfan Sulfate
 R.T.: 6.177 min
 Delta R.T.: 0.000 min
 Response: 47267291
 Conc: 52.40 ng/ml



#20 Methoxychlor
 R.T.: 7.339 min
 Delta R.T.: 0.000 min
 Response: 67378314
 Conc: 48.24 ng/ml



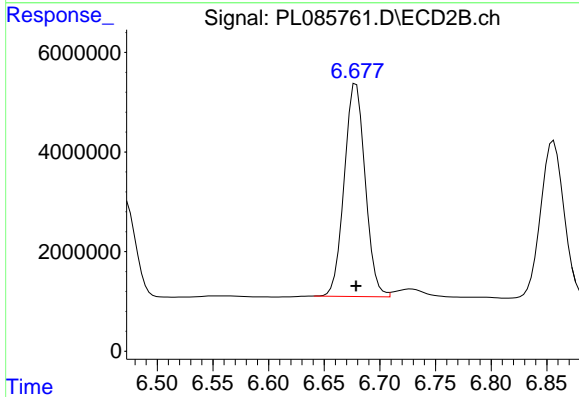
#20 Methoxychlor
 R.T.: 6.472 min
 Delta R.T.: 0.000 min
 Response: 26416971
 Conc: 50.22 ng/ml



#21 Endrin ketone

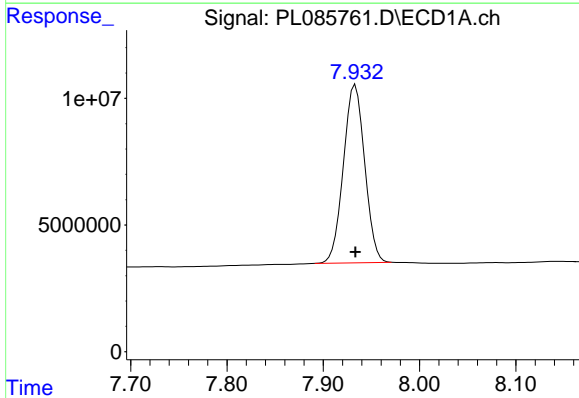
R.T.: 7.460 min
 Delta R.T.: -0.002 min
 Response: 133626807
 Conc: 46.39 ng/ml

Instrument :
 ECD_L
 ClientSampleId :



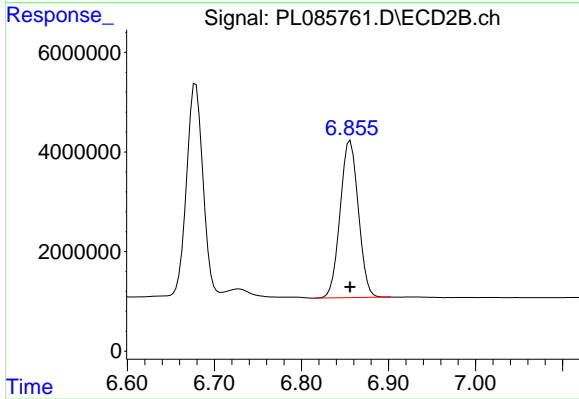
#21 Endrin ketone

R.T.: 6.679 min
 Delta R.T.: 0.000 min
 Response: 55966169
 Conc: 48.69 ng/ml



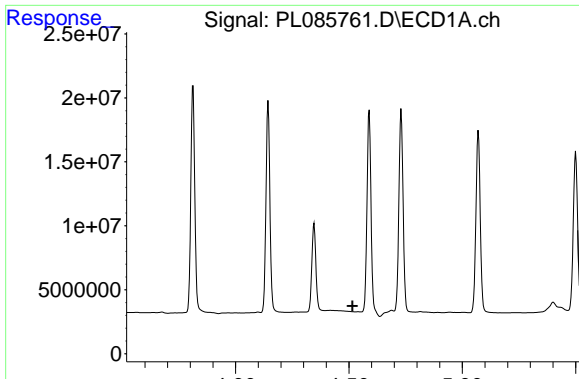
#22 Mirex

R.T.: 7.933 min
 Delta R.T.: 0.000 min
 Response: 107797611
 Conc: 48.69 ng/ml



#22 Mirex

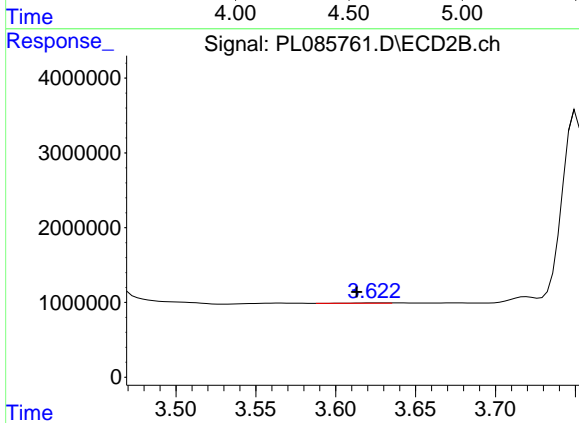
R.T.: 6.856 min
 Delta R.T.: 0.000 min
 Response: 45816206
 Conc: 48.58 ng/ml



#23 Chlordane-1

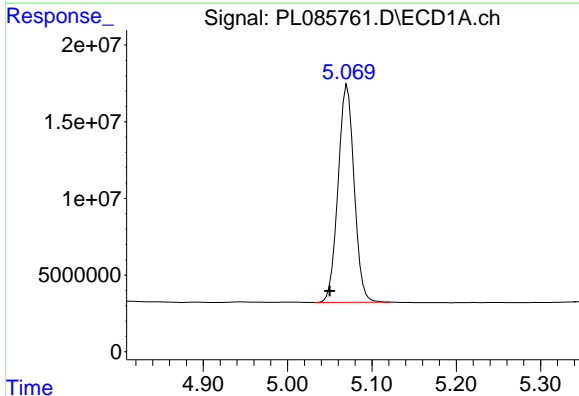
R.T.: 0.000 min
 Exp R.T.: 4.516 min
 Response: 0
 Conc: N.D.

Instrument :
 ECD_L
 ClientSampleId :



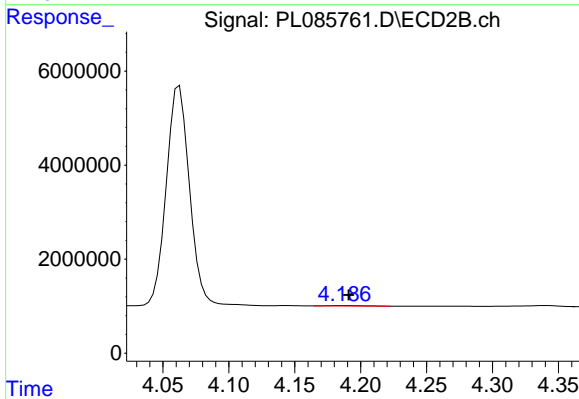
#23 Chlordane-1

R.T.: 3.624 min
 Delta R.T.: 0.011 min
 Response: 69489
 Conc: 2.13 ng/ml



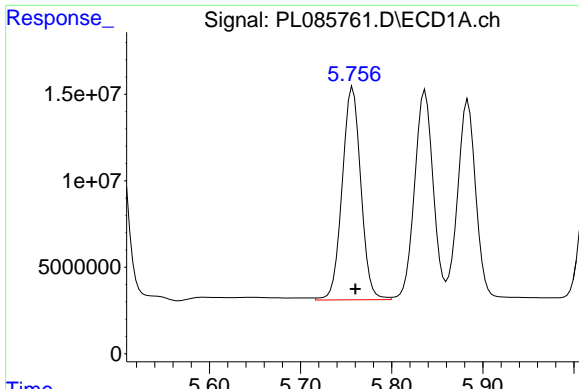
#24 Chlordane-2

R.T.: 5.071 min
 Delta R.T.: 0.021 min
 Response: 187732253
 Conc: 1443.61 ng/ml



#24 Chlordane-2

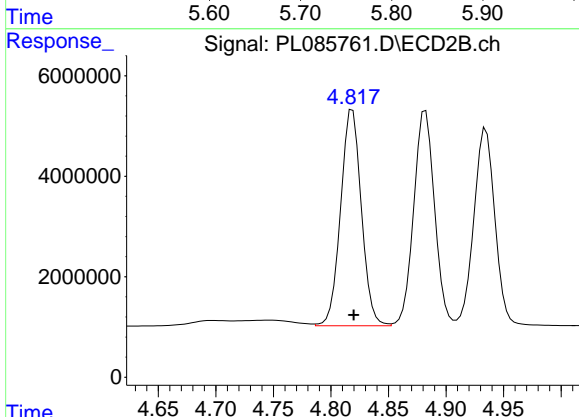
R.T.: 4.187 min
 Delta R.T.: -0.004 min
 Response: 172368
 Conc: 4.43 ng/ml



#25 Chlordane-3

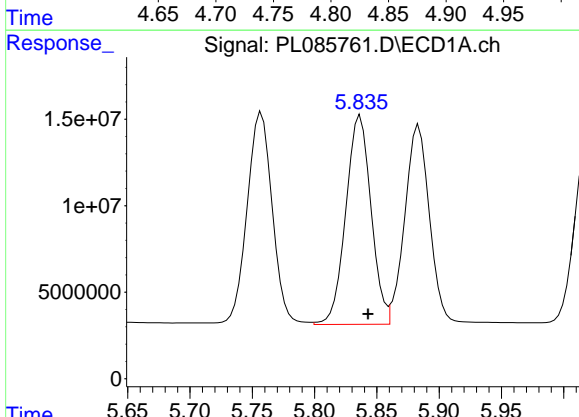
R.T.: 5.757 min
 Delta R.T.: -0.003 min
 Response: 174897043
 Conc: 342.80 ng/ml

Instrument :
 ECD_L
 ClientSampleId :



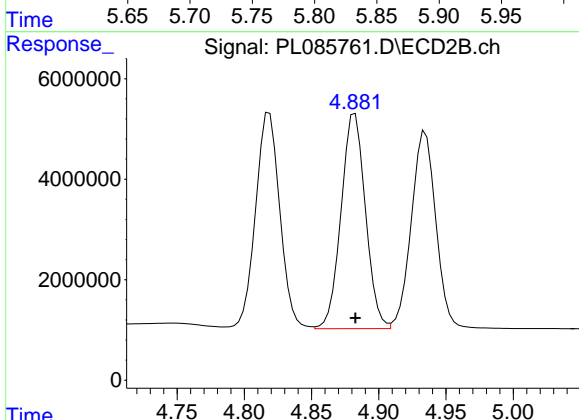
#25 Chlordane-3

R.T.: 4.819 min
 Delta R.T.: -0.001 min
 Response: 54236477
 Conc: 536.74 ng/ml



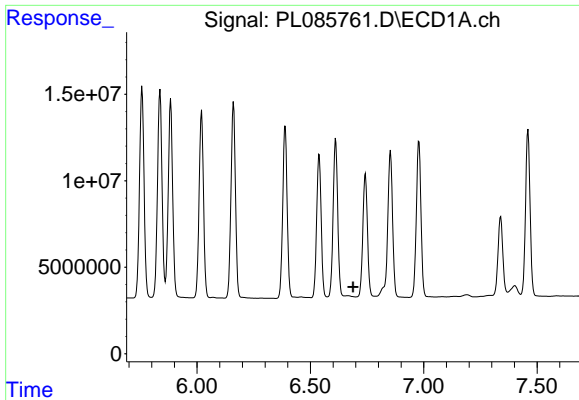
#26 Chlordane-4

R.T.: 5.837 min
 Delta R.T.: -0.006 min
 Response: 170990949
 Conc: 269.51 ng/ml



#26 Chlordane-4

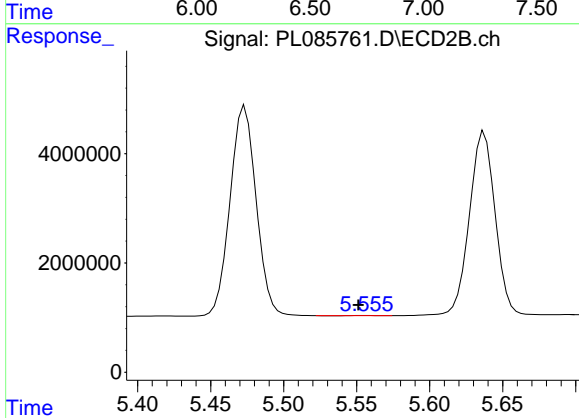
R.T.: 4.882 min
 Delta R.T.: 0.000 min
 Response: 53951968
 Conc: 465.97 ng/ml



#27 Chlordane-5

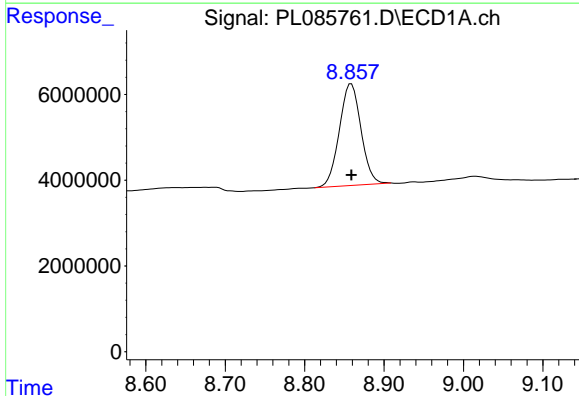
R.T.: 0.000 min
 Exp R.T.: 6.689 min
 Response: 0
 Conc: N.D.

Instrument :
 ECD_L
 ClientSampleId :



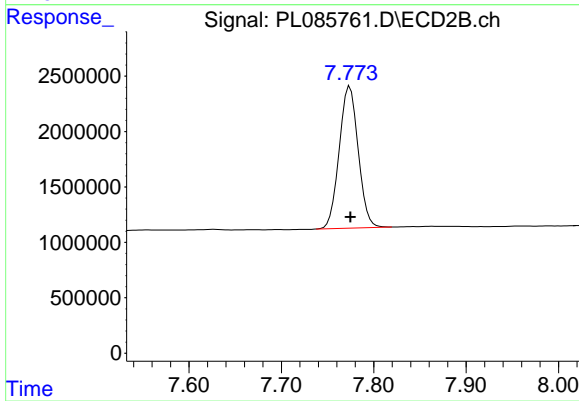
#27 Chlordane-5

R.T.: 5.556 min
 Delta R.T.: 0.005 min
 Response: 16529
 Conc: 0.59 ng/ml



#28 Decachlorobiphenyl

R.T.: 8.859 min
 Delta R.T.: 0.000 min
 Response: 45106415
 Conc: 20.71 ng/ml



#28 Decachlorobiphenyl

R.T.: 7.774 min
 Delta R.T.: 0.000 min
 Response: 18335194
 Conc: 19.87 ng/ml