

Data Path : Z:\pestpcbsrv\HPCHEM1\ECD_L\Data\PL100721\
 Data File : PL070177.D
 Signal(s) : Signal #1: ECD1A.ch Signal #2: ECD2B.ch
 Acq On : 07 Oct 2021 09:00
 Operator : AR\AJ
 Sample : HEXANE
 Misc :
 ALS Vial : 1 Sample Multiplier: 1

Instrument :
 ECD_L
 ClientSampled :

Integration File signal 1: autoint1.e
 Integration File signal 2: autoint2.e
 Quant Time: Oct 08 02:57:14 2021
 Quant Method : Z:\pestpcbsrv\HPCHEM1\ECD_L\methods\PL092821.M
 Quant Title : GC Extractables
 QLast Update : Wed Sep 29 09:19:28 2021
 Response via : Initial Calibration
 Integrator: ChemStation

Volume Inj. : 1 µl
 Signal #1 Phase : ZB-MR2 Signal #2 Phase: ZB-MR1
 Signal #1 Info : 30M x 0.32mm x0.2 Signal #2 Info : 30M x 0.32mm x0.5µm

Compound	RT#1	RT#2	Resp#1	Resp#2	ng/ml	ng/ml

System Monitoring Compounds						
28) SA Decachlor...	10.402	11.485	148091	40911	0.214	0.034 #
Target Compounds						
2) A alpha-BHC	5.312f	6.120f	101176	610502	0.137	0.312 #
3) MA gamma-BHC...	5.780f	0.000	176937	0	0.253	N.D. #
4) MA Heptachlor	6.143f	0.000	1745900	0	2.292	N.D. #
5) MB Aldrin	0.000	7.574	0	107831	N.D.	0.063 #
6) B beta-BHC	6.143	0.000	1745900	0	5.200	N.D. #
7) B delta-BHC	0.000	7.084f	0	817210	N.D.	0.422 #
8) B Heptachlo...	0.000	8.036	0	4903608	N.D.	3.164 #
9) A Endosulfan I	7.503f	8.451	51390	7428	0.077	0.005 #
10) B gamma-Chl...	0.000	8.303	0	500980	N.D.	0.313 #
11) B alpha-Chl...	0.000	8.400f	0	253087	N.D.	0.160 #
12) B 4,4'-DDE	7.635	8.550f	130861	592751	0.206	0.383 #
13) MA Dieldrin	7.770	8.726	540174	671319	0.786	0.440 #
14) MA Endrin	8.071f	8.951f	4259912	3851385	6.741	3.066 #
15) B Endosulfa...	8.366	9.217f	28266	370633	0.045	0.310 #
17) MA 4,4'-DDT	8.463f	9.429	78538	2046863	0.128	1.566 #
18) B Endrin al...	0.000	9.343	0	1200588	N.D.	1.245 #
19) B Endosulfa...	8.786	9.570	40953	50623	0.062	0.041 #
21) B Endrin ke...	0.000	10.090f	0	231183	N.D.	0.173 #
24) Chlordane-2	6.676f	7.574f	6097	107831	0.241	2.001 #
25) Chlordane-3	0.000	8.303	0	500980	N.D.	2.366 #
26) Chlordane-4	0.000	8.400	0	253087	N.D.	0.996 #
27) Chlordane-5	8.366	9.285	28266	318670	1.421	7.339 #

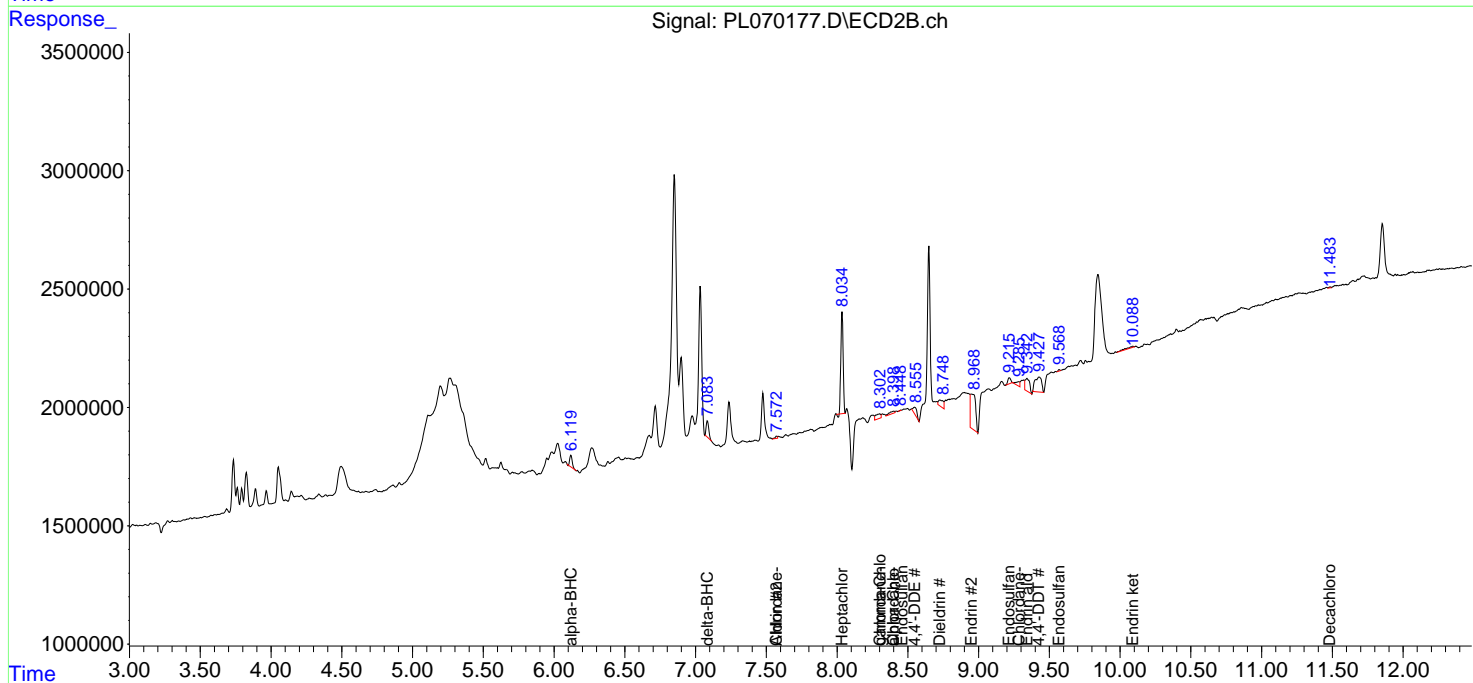
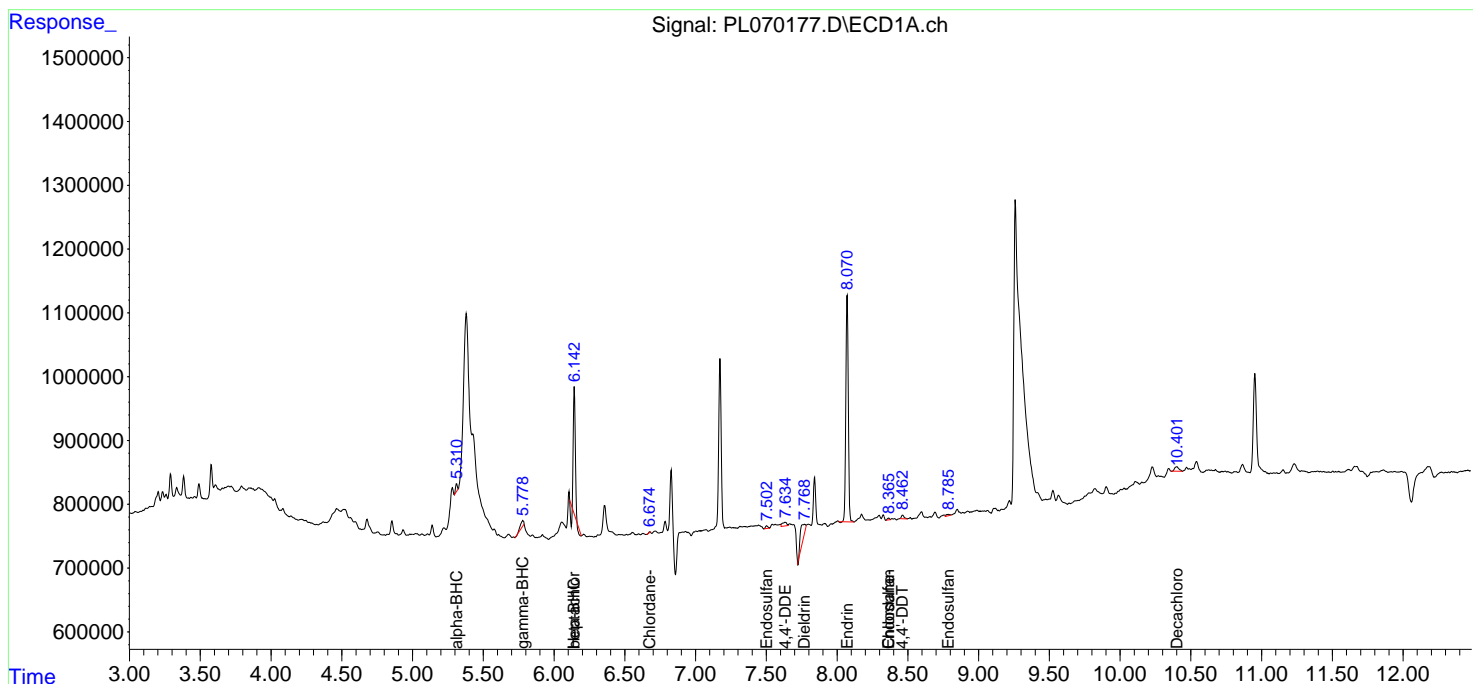
(f)=RT Delta > 1/2 Window (#)=Amounts differ by > 25% (m)=manual int.

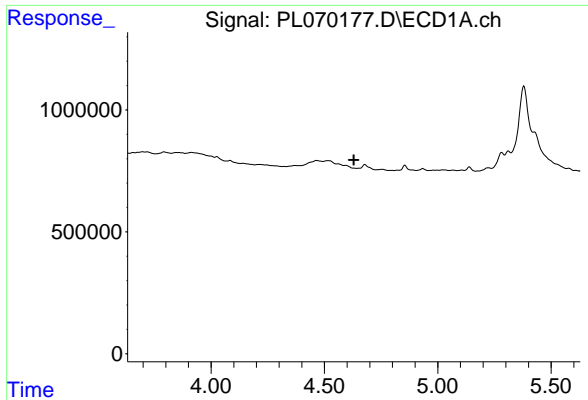
Data Path : Z:\pestpcbsrv\HPCHEM1\ECD_L\Data\PL100721\
 Data File : PL070177.D
 Signal(s) : Signal #1: ECD1A.ch Signal #2: ECD2B.ch
 Acq On : 07 Oct 2021 09:00
 Operator : AR\AJ
 Sample : HEXANE
 Misc :
 ALS Vial : 1 Sample Multiplier: 1

Instrument :
 ECD_L
 ClientSampled :

Integration File signal 1: autoint1.e
 Integration File signal 2: autoint2.e
 Quant Time: Oct 08 02:57:14 2021
 Quant Method : Z:\pestpcbsrv\HPCHEM1\ECD_L\methods\PL092821.M
 Quant Title : GC Extractables
 QLast Update : Wed Sep 29 09:19:28 2021
 Response via : Initial Calibration
 Integrator: ChemStation

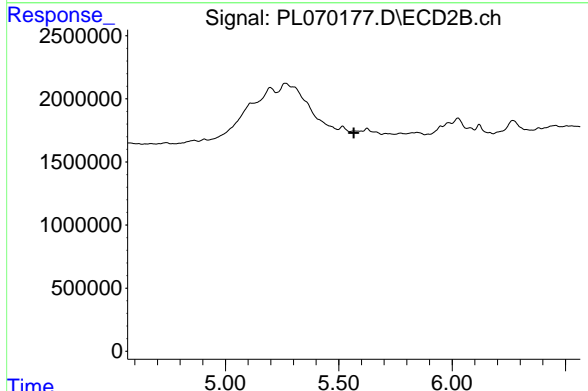
Volume Inj. : 1 µl
 Signal #1 Phase : ZB-MR2 Signal #2 Phase: ZB-MR1
 Signal #1 Info : 30M x 0.32mm x0.2 Signal #2 Info : 30M x 0.32mm x0.5µm



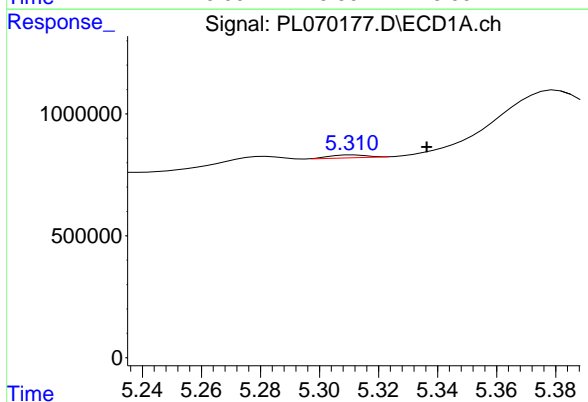


#1 Tetrachloro-m-xylene
 R.T.: 0.000 min
 Exp R.T.: 4.629 min
 Response: 0
 Conc: N.D.

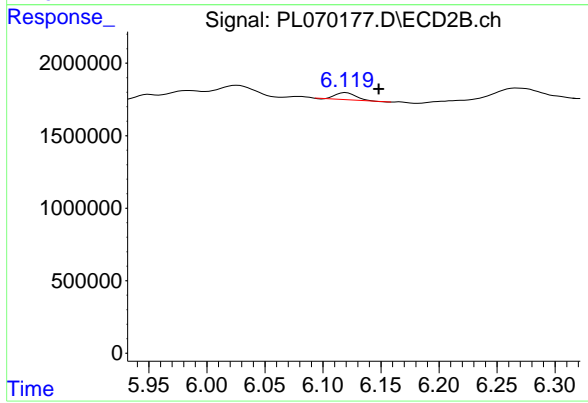
Instrument :
 ECD_L
 ClientSampleId :



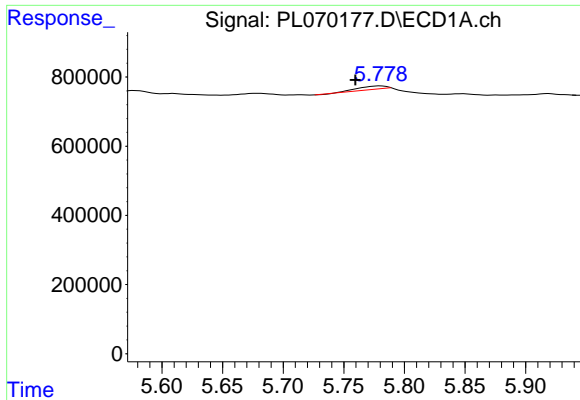
#1 Tetrachloro-m-xylene
 R.T.: 5.565 min
 Delta R.T.: -0.001 min
 Response: -91837
 Conc: N.D.



#2 alpha-BHC
 R.T.: 5.312 min
 Delta R.T.: -0.025 min
 Response: 101176
 Conc: 0.14 ng/ml

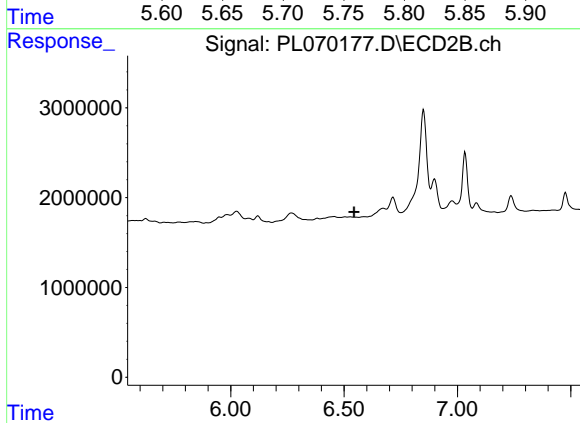


#2 alpha-BHC
 R.T.: 6.120 min
 Delta R.T.: -0.028 min
 Response: 610502
 Conc: 0.31 ng/ml

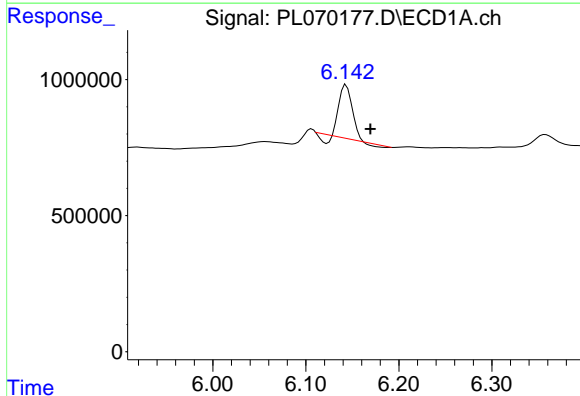


#3 gamma-BHC (Lindane)
 R.T.: 5.780 min
 Delta R.T.: 0.020 min
 Response: 176937
 Conc: 0.25 ng/ml

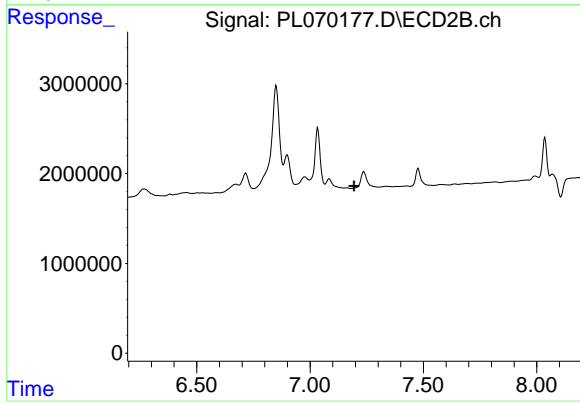
Instrument :
 ECD_L
 ClientSampleId :



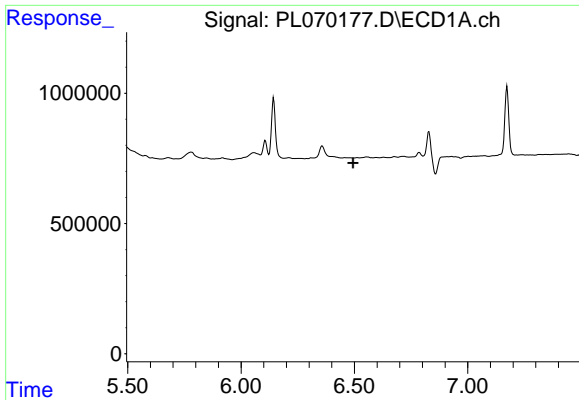
#3 gamma-BHC (Lindane)
 R.T.: 0.000 min
 Exp R.T. : 6.545 min
 Response: 0
 Conc: N.D.



#4 Heptachlor
 R.T.: 6.143 min
 Delta R.T.: -0.026 min
 Response: 1745900
 Conc: 2.29 ng/ml

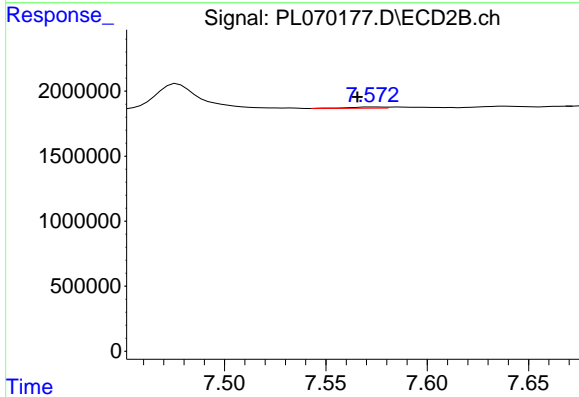


#4 Heptachlor
 R.T.: 0.000 min
 Exp R.T. : 7.194 min
 Response: 0
 Conc: N.D.

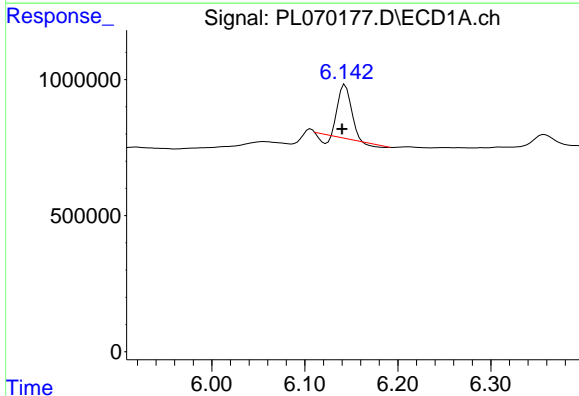


#5 Aldrin
 R.T.: 0.000 min
 Exp R.T.: 6.495 min
 Response: 0
 Conc: N.D.

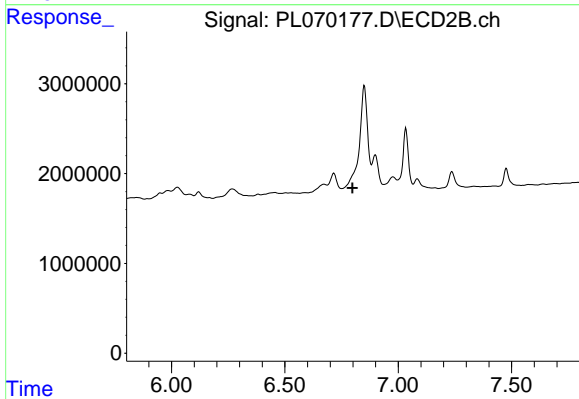
Instrument :
 ECD_L
 ClientSampleId :



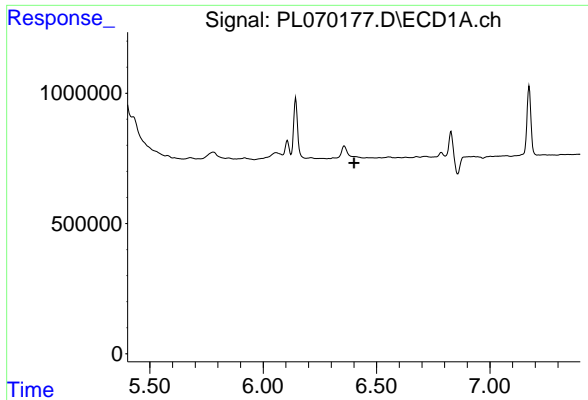
#5 Aldrin
 R.T.: 7.574 min
 Delta R.T.: 0.008 min
 Response: 107831
 Conc: 0.06 ng/ml



#6 beta-BHC
 R.T.: 6.143 min
 Delta R.T.: 0.003 min
 Response: 1745900
 Conc: 5.20 ng/ml



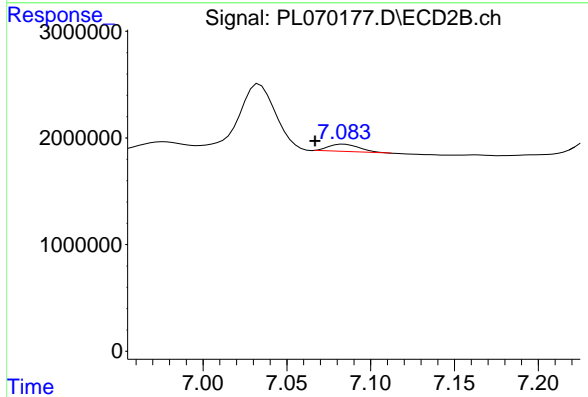
#6 beta-BHC
 R.T.: 0.000 min
 Exp R.T.: 6.799 min
 Response: 0
 Conc: N.D.



#7 delta-BHC

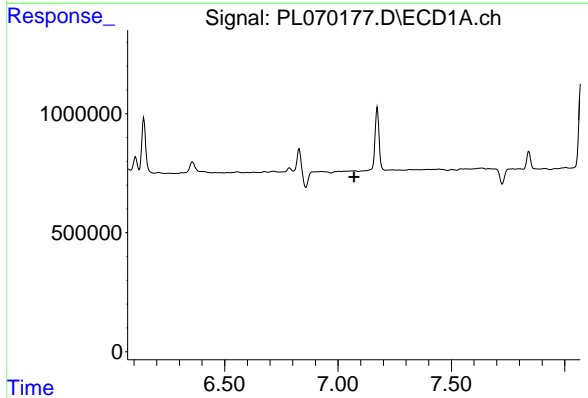
R.T.: 0.000 min
 Exp R.T. : 6.401 min
 Response: 0
 Conc: N.D.

Instrument :
 ECD_L
 ClientSampled :



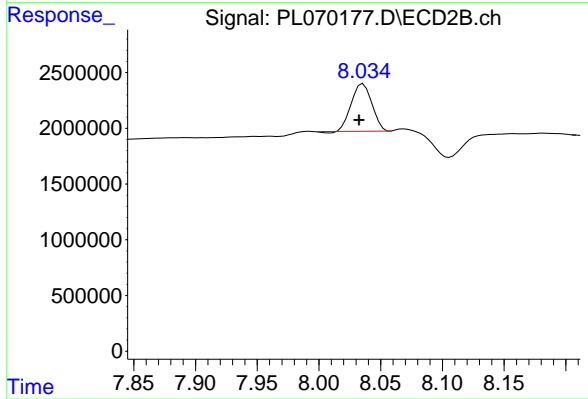
#7 delta-BHC

R.T.: 7.084 min
 Delta R.T.: 0.017 min
 Response: 817210
 Conc: 0.42 ng/ml



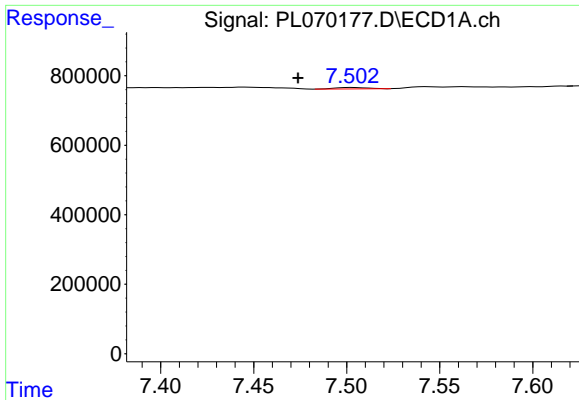
#8 Heptachlor epoxide

R.T.: 0.000 min
 Exp R.T. : 7.071 min
 Response: 0
 Conc: N.D.



#8 Heptachlor epoxide

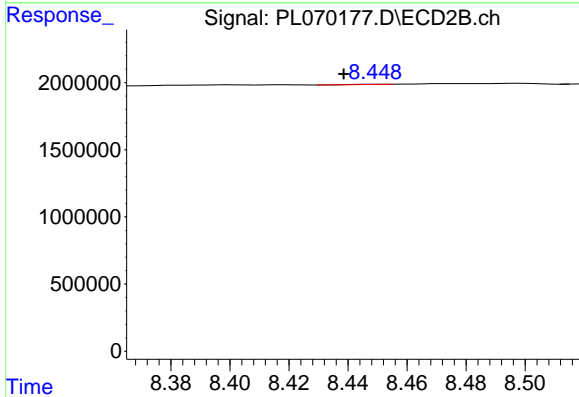
R.T.: 8.036 min
 Delta R.T.: 0.003 min
 Response: 4903608
 Conc: 3.16 ng/ml



#9 Endosulfan I

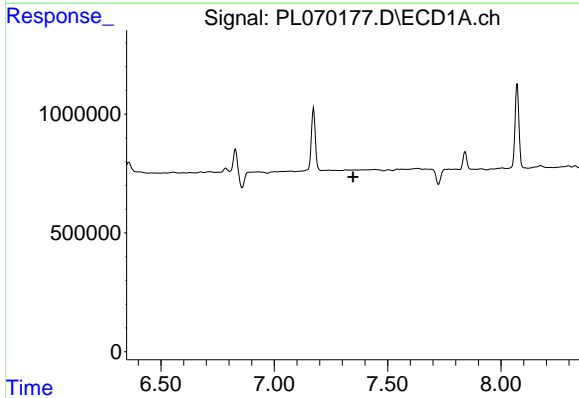
R.T.: 7.503 min
 Delta R.T.: 0.029 min
 Response: 51390
 Conc: 0.08 ng/ml

Instrument :
 ECD_L
 ClientSampleId :



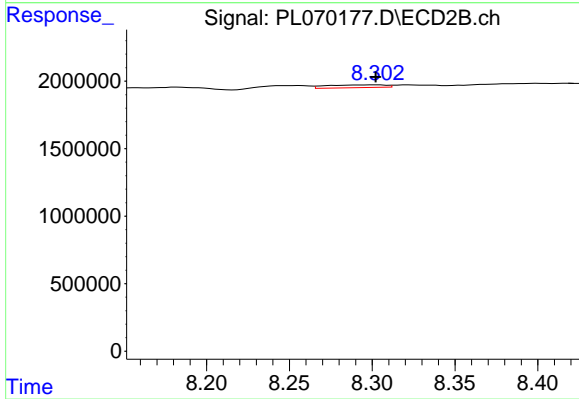
#9 Endosulfan I

R.T.: 8.451 min
 Delta R.T.: 0.013 min
 Response: 7428
 Conc: 0.01 ng/ml



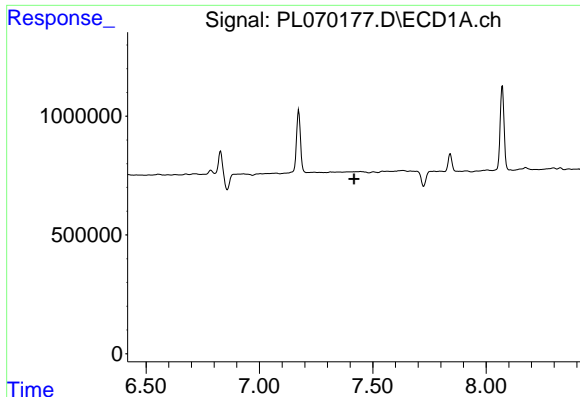
#10 gamma-Chlordane

R.T.: 0.000 min
 Exp R.T. : 7.348 min
 Response: 0
 Conc: N.D.



#10 gamma-Chlordane

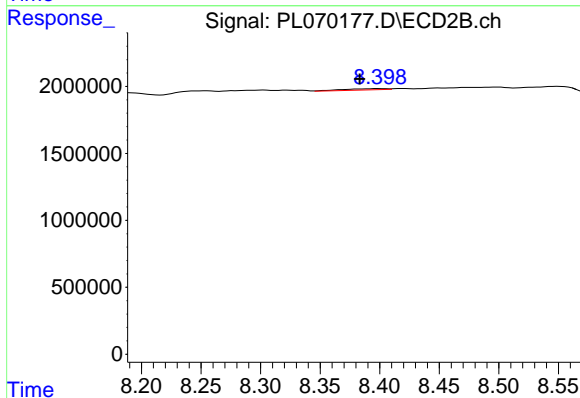
R.T.: 8.303 min
 Delta R.T.: 0.000 min
 Response: 500980
 Conc: 0.31 ng/ml



#11 alpha-Chlordane

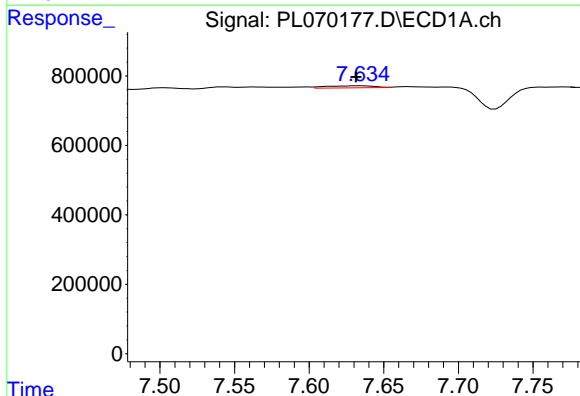
R.T.: 0.000 min
Exp R.T.: 7.418 min
Response: 0
Conc: N.D.

Instrument :
ECD_L
ClientSampled :



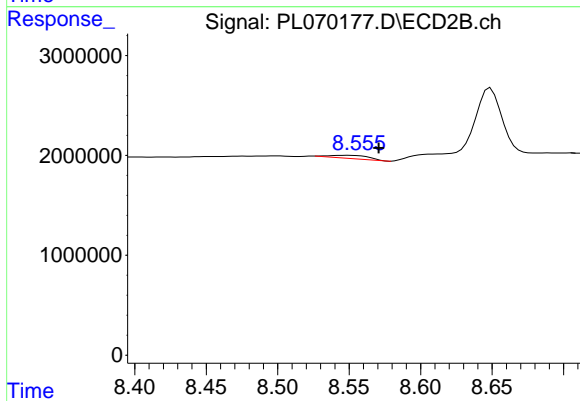
#11 alpha-Chlordane

R.T.: 8.400 min
Delta R.T.: 0.016 min
Response: 253087
Conc: 0.16 ng/ml



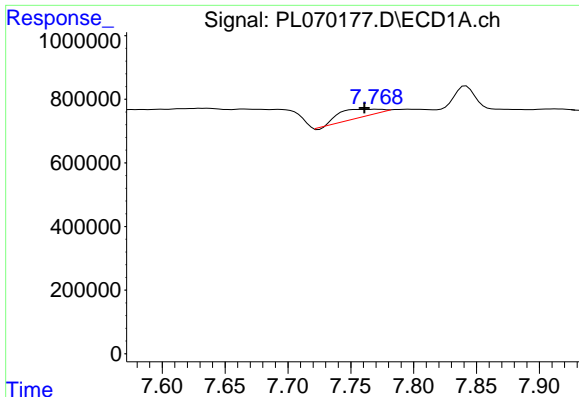
#12 4,4'-DDE

R.T.: 7.635 min
Delta R.T.: 0.003 min
Response: 130861
Conc: 0.21 ng/ml



#12 4,4'-DDE

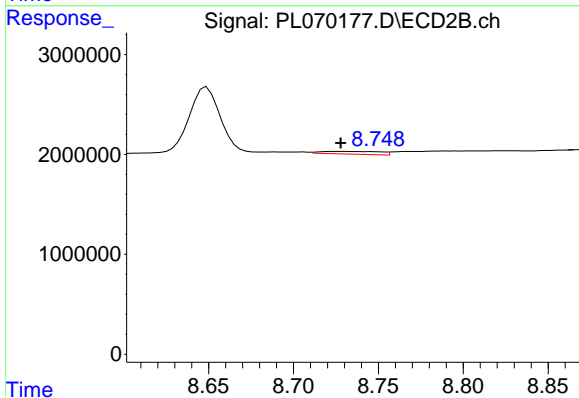
R.T.: 8.550 min
Delta R.T.: -0.021 min
Response: 592751
Conc: 0.38 ng/ml



#13 Dieldrin

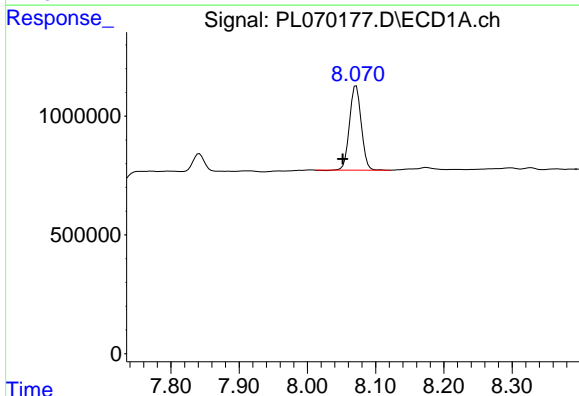
R.T.: 7.770 min
 Delta R.T.: 0.010 min
 Response: 540174
 Conc: 0.79 ng/ml

Instrument :
 ECD_L
 ClientSampled :



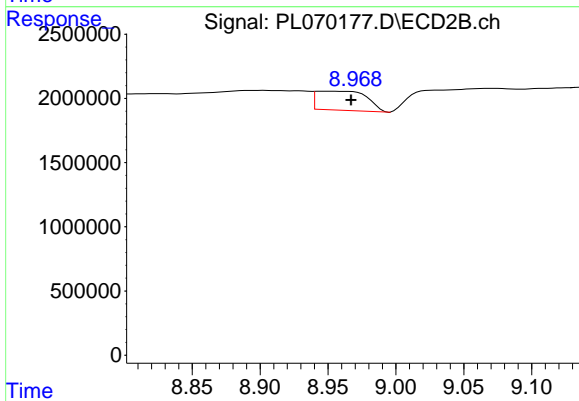
#13 Dieldrin

R.T.: 8.726 min
 Delta R.T.: -0.002 min
 Response: 671319
 Conc: 0.44 ng/ml



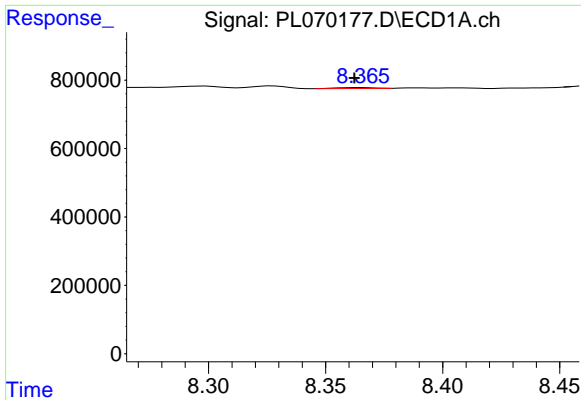
#14 Endrin

R.T.: 8.071 min
 Delta R.T.: 0.020 min
 Response: 4259912
 Conc: 6.74 ng/ml



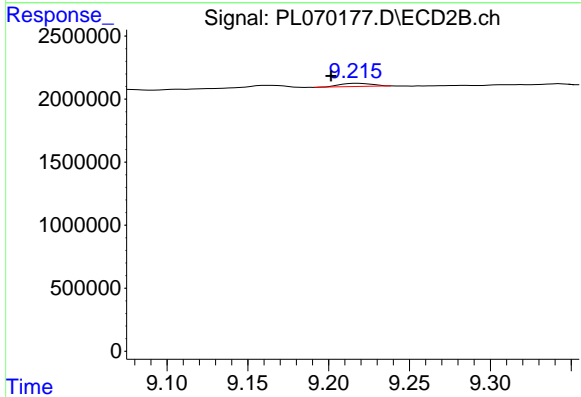
#14 Endrin

R.T.: 8.951 min
 Delta R.T.: -0.016 min
 Response: 3851385
 Conc: 3.07 ng/ml

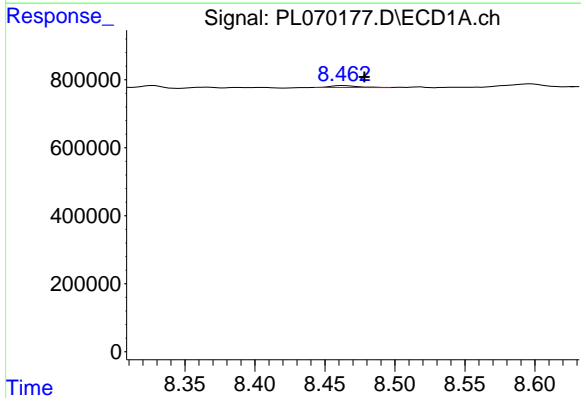


#15 Endosulfan II
 R.T.: 8.366 min
 Delta R.T.: 0.004 min
 Response: 28266
 Conc: 0.04 ng/ml

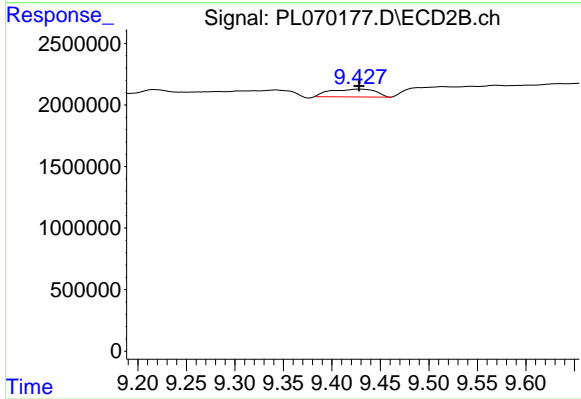
Instrument :
 ECD_L
 ClientSampleId :



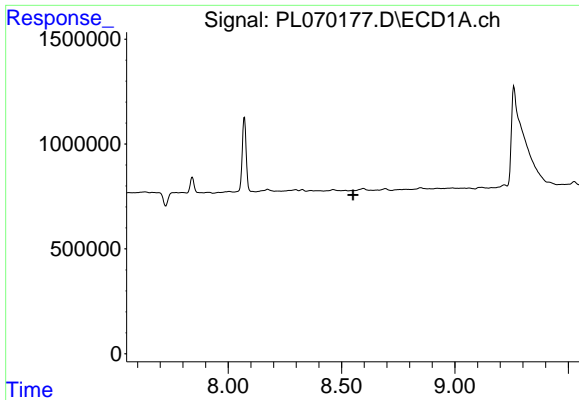
#15 Endosulfan II
 R.T.: 9.217 min
 Delta R.T.: 0.016 min
 Response: 370633
 Conc: 0.31 ng/ml



#17 4,4'-DDT
 R.T.: 8.463 min
 Delta R.T.: -0.015 min
 Response: 78538
 Conc: 0.13 ng/ml

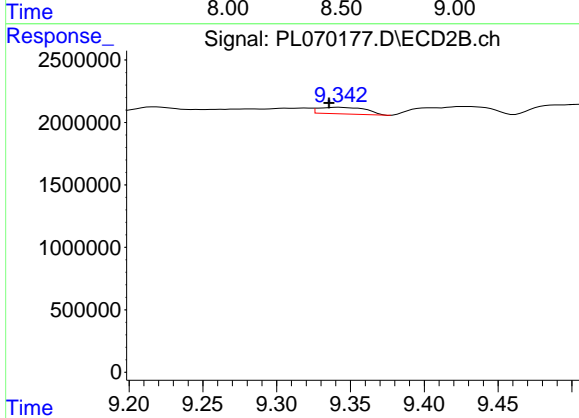


#17 4,4'-DDT
 R.T.: 9.429 min
 Delta R.T.: 0.000 min
 Response: 2046863
 Conc: 1.57 ng/ml

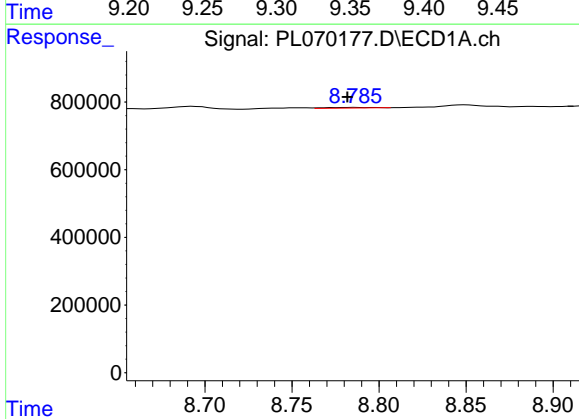


#18 Endrin aldehyde
 R.T.: 0.000 min
 Exp R.T.: 8.551 min
 Response: 0
 Conc: N.D.

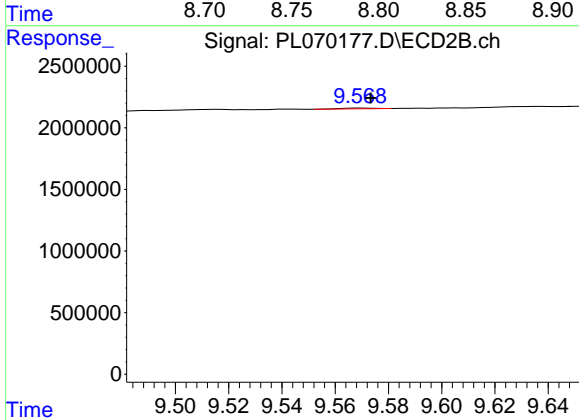
Instrument :
 ECD_L
 ClientSampleId :



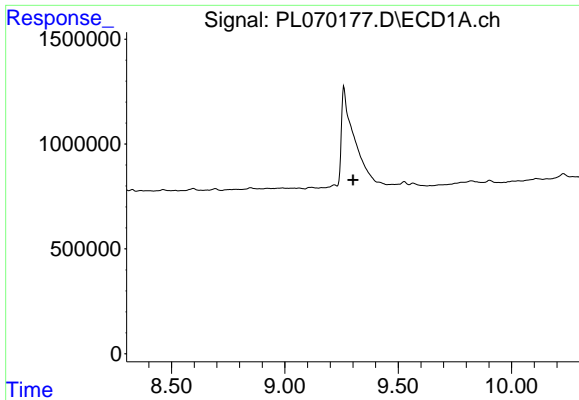
#18 Endrin aldehyde
 R.T.: 9.343 min
 Delta R.T.: 0.007 min
 Response: 1200588
 Conc: 1.24 ng/ml



#19 Endosulfan Sulfate
 R.T.: 8.786 min
 Delta R.T.: 0.005 min
 Response: 40953
 Conc: 0.06 ng/ml



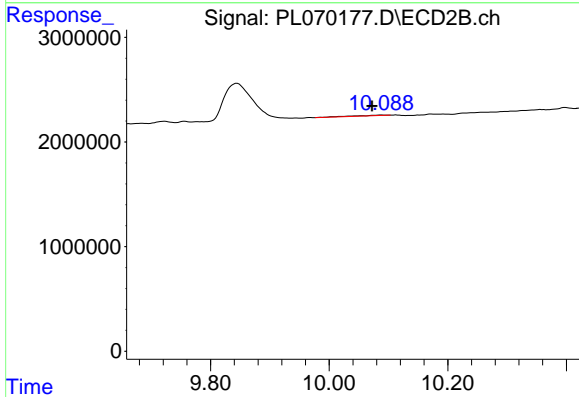
#19 Endosulfan Sulfate
 R.T.: 9.570 min
 Delta R.T.: -0.003 min
 Response: 50623
 Conc: 0.04 ng/ml



#21 Endrin ketone

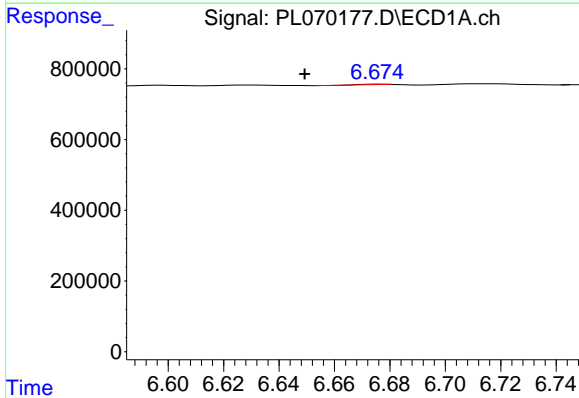
R.T.: 0.000 min
 Exp R.T.: 9.301 min
 Response: 0
 Conc: N.D.

Instrument :
 ECD_L
 ClientSampled :



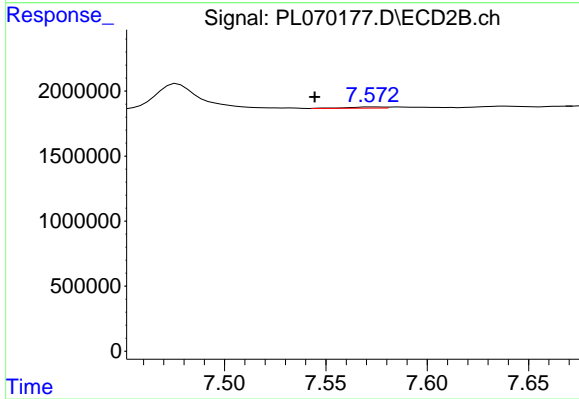
#21 Endrin ketone

R.T.: 10.090 min
 Delta R.T.: 0.018 min
 Response: 231183
 Conc: 0.17 ng/ml



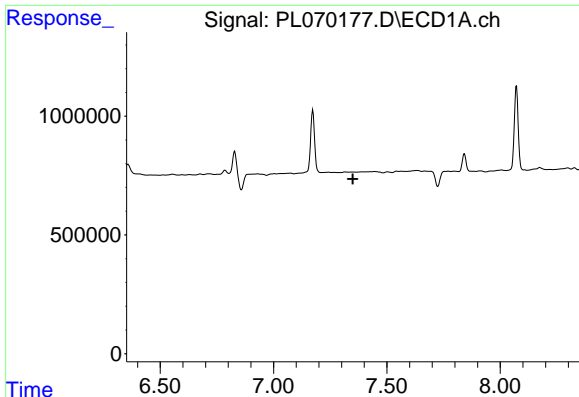
#24 Chlordane-2

R.T.: 6.676 min
 Delta R.T.: 0.027 min
 Response: 6097
 Conc: 0.24 ng/ml



#24 Chlordane-2

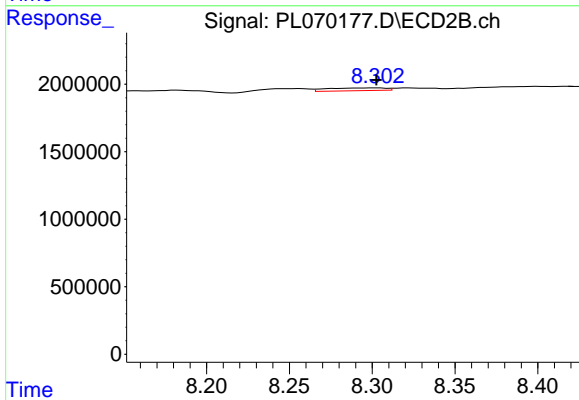
R.T.: 7.574 min
 Delta R.T.: 0.029 min
 Response: 107831
 Conc: 2.00 ng/ml



#25 Chlordane-3

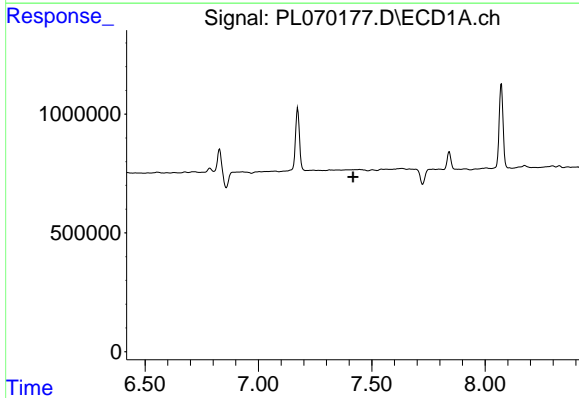
R.T.: 0.000 min
 Exp R.T. : 7.349 min
 Response: 0
 Conc: N.D.

Instrument :
 ECD_L
 ClientSampled :



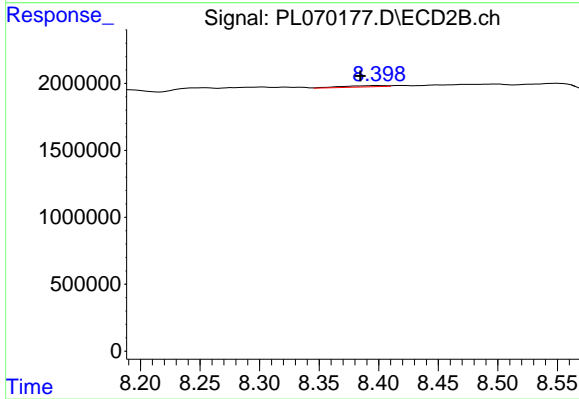
#25 Chlordane-3

R.T.: 8.303 min
 Delta R.T.: 0.000 min
 Response: 500980
 Conc: 2.37 ng/ml



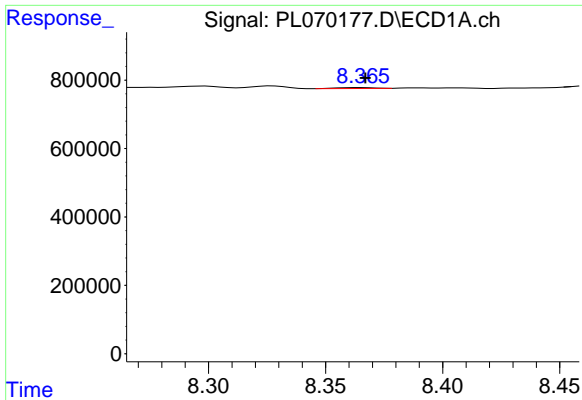
#26 Chlordane-4

R.T.: 0.000 min
 Exp R.T. : 7.418 min
 Response: 0
 Conc: N.D.



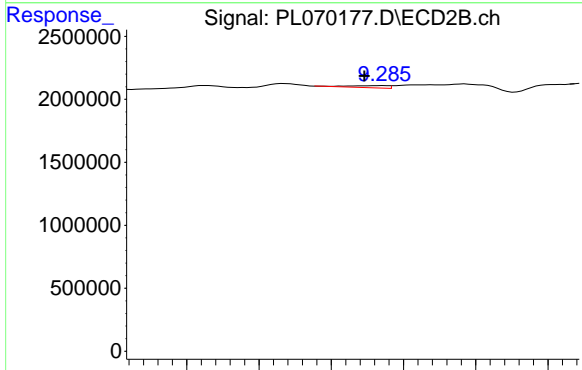
#26 Chlordane-4

R.T.: 8.400 min
 Delta R.T.: 0.015 min
 Response: 253087
 Conc: 1.00 ng/ml

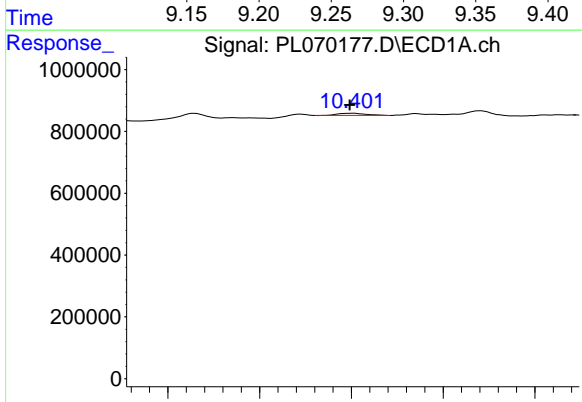


#27 Chlordane-5
 R.T.: 8.366 min
 Delta R.T.: 0.000 min
 Response: 28266
 Conc: 1.42 ng/ml

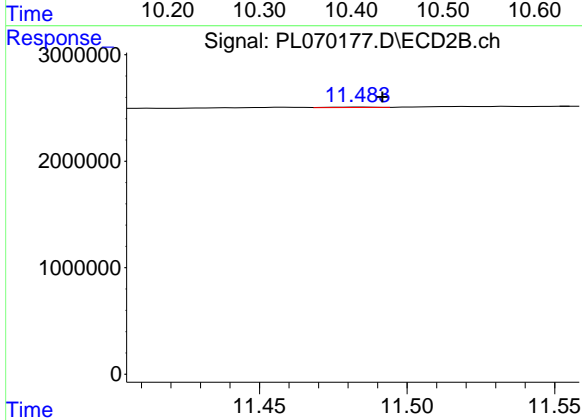
Instrument :
 ECD_L
 ClientSampled :



#27 Chlordane-5
 R.T.: 9.285 min
 Delta R.T.: 0.012 min
 Response: 318670
 Conc: 7.34 ng/ml



#28 Decachlorobiphenyl
 R.T.: 10.402 min
 Delta R.T.: 0.004 min
 Response: 148091
 Conc: 0.21 ng/ml



#28 Decachlorobiphenyl
 R.T.: 11.485 min
 Delta R.T.: -0.007 min
 Response: 40911
 Conc: 0.03 ng/ml