

Data Path : Z:\pestpcbsrv\HPCHEM1\ECD\_L\Data\PL100722\  
 Data File : PL078187.D  
 Signal(s) : Signal #1: ECD1A.ch Signal #2: ECD2B.ch  
 Acq On : 06 Oct 2022 15:56  
 Operator : AR\AJ  
 Sample : INDA353  
 Misc :  
 ALS Vial : 11 Sample Multiplier: 1

Instrument :  
 ECD\_L  
 ClientSampleId :

Integration File signal 1: autoint1.e  
 Integration File signal 2: autoint2.e  
 Quant Time: Oct 07 00:36:35 2022  
 Quant Method : Z:\pestpcbsrv\HPCHEM1\ECD\_L\methods\PL100522CLP.M  
 Quant Title : GC Extractables  
 QLast Update : Wed Oct 05 01:39:00 2022  
 Response via : Initial Calibration  
 Integrator: ChemStation

Volume Inj. : 1 µl  
 Signal #1 Phase : ZB-MR2 Signal #2 Phase: ZB-MR1  
 Signal #1 Info : 30M x 0.32mm x0.2 Signal #2 Info : 30M x 0.32mm x 0.50µm

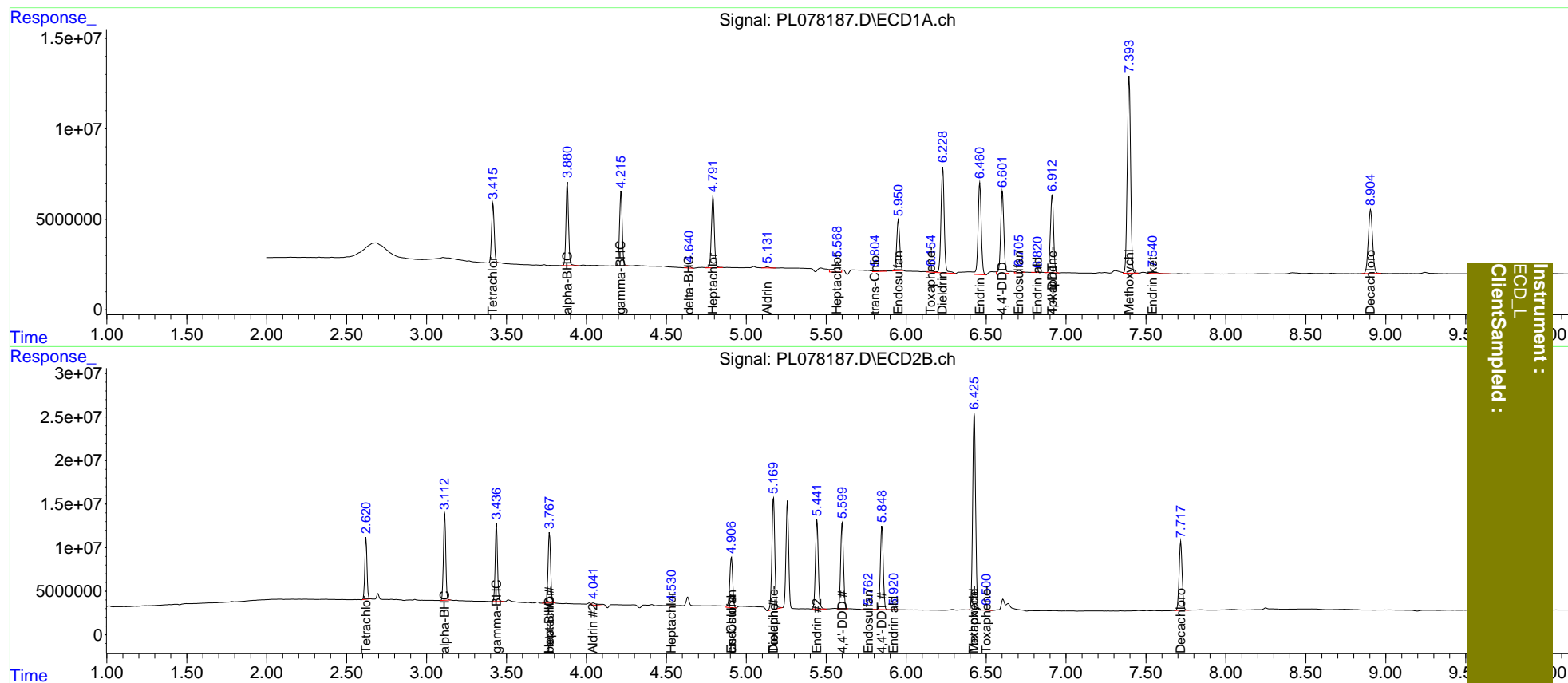
Compound	RT#1	RT#2	Resp#1	Resp#2	ng/ml	ng/ml
-----						
System Monitoring Compounds						
1) SA Tetrachlo...	3.416	2.622	37031586	66538717	20.994	19.777
27) SA Decachlor...	8.906	7.718	65342284	106.8E6	43.109	39.429
Target Compounds						
2) A alpha-BHC	3.881	3.114	52093141	99564027	20.723	19.837
3) MA gamma-BHC...	4.217	3.437	48634993	91888481	20.157	20.070
4) MA Heptachlor	4.792	3.769	50731769	89704253	21.036	19.528
5) MB Aldrin	5.132	4.043	1152080	8802461	0.528	1.973 #
6) B beta-BHC	0.000	3.769f	0	89704253	N.D.	45.183
7) B delta-BHC	4.641f	0.000	1568909	0	0.642	N.D. #
8) B Heptachlo...	5.570	4.532	11905297	1911871	5.627	0.485 #
9) A Endosulfan I	5.951	4.907	36523522	73898312	20.559	20.439
10) B trans-Chl...	5.805	0.000	2114394	0	1.083	N.D. #
11) B cis-Chlor...	5.903	4.907f	112505	73898312	<MDL	19.161 #
13) MA Dieldrin	6.229	5.170	82674987	162.5E6	44.450	41.776
14) MA Endrin	6.461	5.442	69818255	128.6E6	43.297	39.876
15) B Endosulfa...	6.707	5.764	2601505	1126183	1.613	0.356 #
16) A 4,4'-DDD	6.602	5.600	62833457	120.6E6	46.306	39.934
17) MA 4,4'-DDT	6.914	5.849	58631840	118.6E6	40.285	39.272
18) B Endrin al...	6.821	5.921	347106	1223984	0.258	0.473 #
20) A Methoxychlor	7.395	6.426	155.6E6	284.9E6	207.413	191.429
22) Toxaphene-1	6.156f	5.170	2043103	162.5E6	145.994	10046.044 #
23) Toxaphene-2	6.914	6.426	58631840	284.9E6	1433.758	4236.615 #
24) Toxaphene-3	0.000	6.502	0	1216681	N.D.	13.361

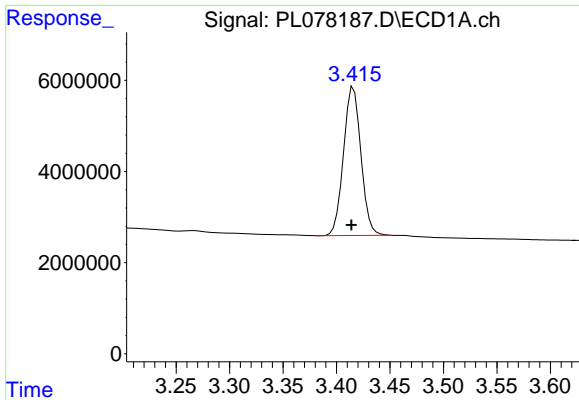
(f)=RT Delta > 1/2 Window (#)=Amounts differ by > 25% (m)=manual int.

Data Path : Z:\pestpcbsrv\HPCHEM1\ECD\_L\Data\PL100722\  
 Data File : PL078187.D  
 Signal(s) : Signal #1: ECD1A.ch Signal #2: ECD2B.ch  
 Acq On : 06 Oct 2022 15:56  
 Operator : AR\AJ  
 Sample : INDA353  
 Misc :  
 ALS Vial : 11 Sample Multiplier: 1

Integration File signal 1: autoint1.e  
 Integration File signal 2: autoint2.e  
 Quant Time: Oct 07 00:36:35 2022  
 Quant Method : Z:\pestpcbsrv\HPCHEM1\ECD\_L\methods\PL100522CLP.M  
 Quant Title : GC Extractables  
 QLast Update : Wed Oct 05 01:39:00 2022  
 Response via : Initial Calibration  
 Integrator: ChemStation

Volume Inj. : 1 µl  
 Signal #1 Phase : ZB-MR2 Signal #2 Phase: ZB-MR1  
 Signal #1 Info : 30M x 0.32mm x0.2 Signal #2 Info : 30M x 0.32mm x 0.50µm

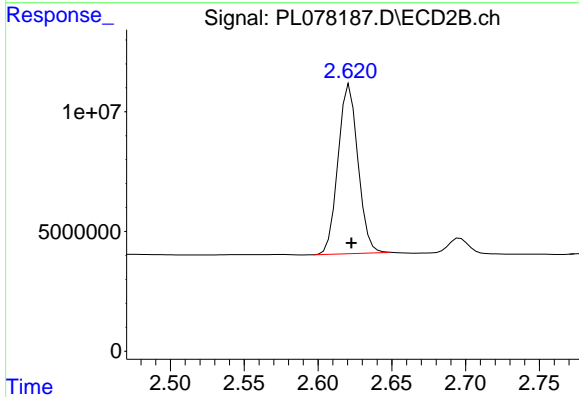




#1 Tetrachloro-m-xylene

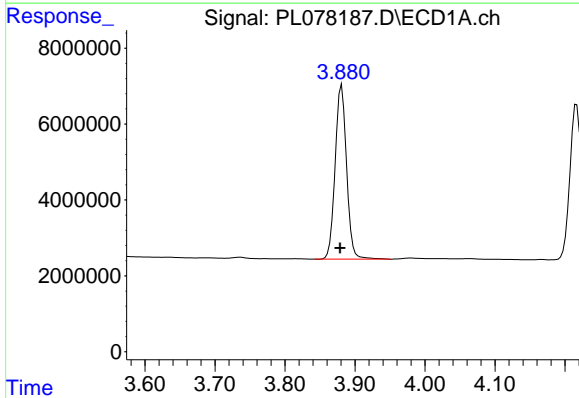
R.T.: 3.416 min  
 Delta R.T.: 0.002 min  
 Response: 37031586  
 Conc: 20.99 ng/ml

Instrument :  
 ECD\_L  
 ClientSampleId :



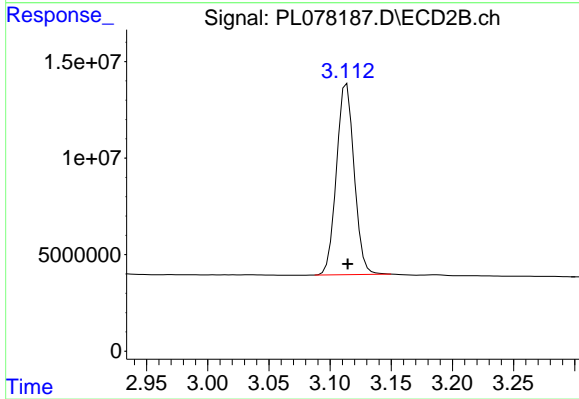
#1 Tetrachloro-m-xylene

R.T.: 2.622 min  
 Delta R.T.: 0.000 min  
 Response: 66538717  
 Conc: 19.78 ng/ml



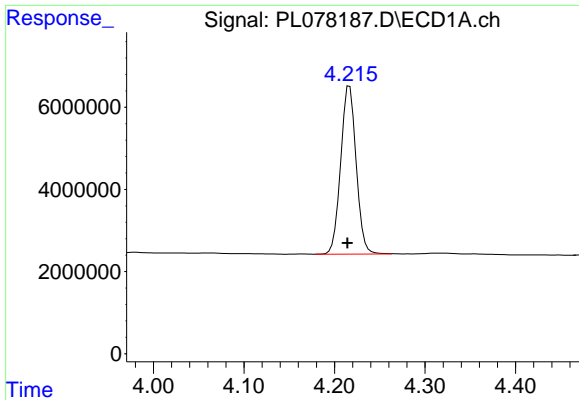
#2 alpha-BHC

R.T.: 3.881 min  
 Delta R.T.: 0.003 min  
 Response: 52093141  
 Conc: 20.72 ng/ml



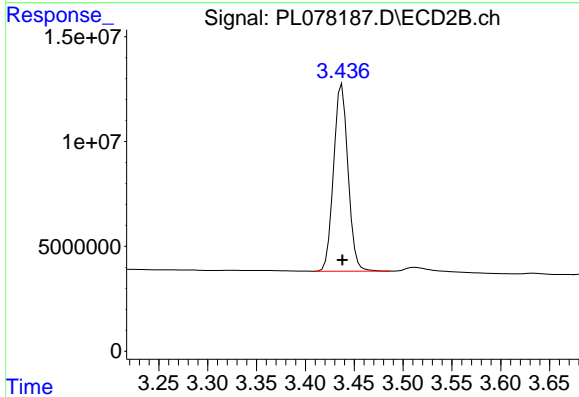
#2 alpha-BHC

R.T.: 3.114 min  
 Delta R.T.: 0.000 min  
 Response: 99564027  
 Conc: 19.84 ng/ml

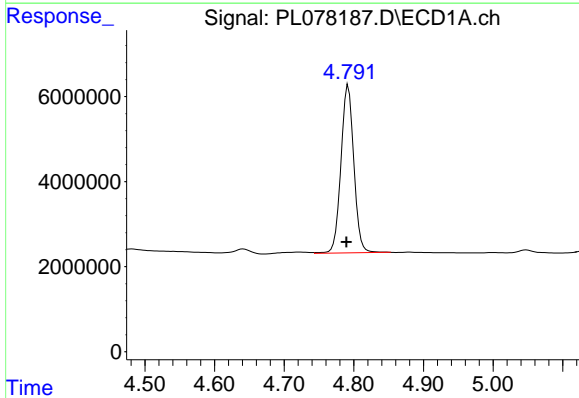


#3 gamma-BHC (Lindane)  
 R.T.: 4.217 min  
 Delta R.T.: 0.002 min  
 Response: 48634993  
 Conc: 20.16 ng/ml

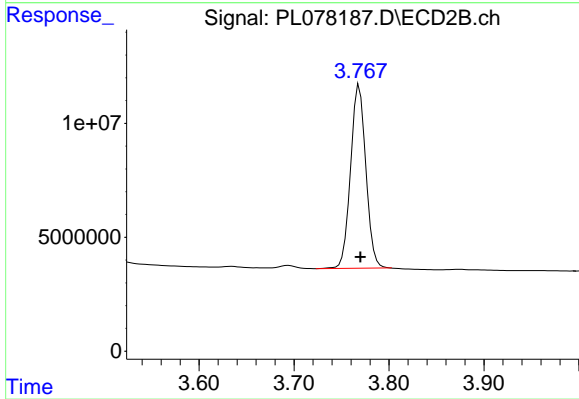
Instrument :  
 ECD\_L  
 ClientSampleId :



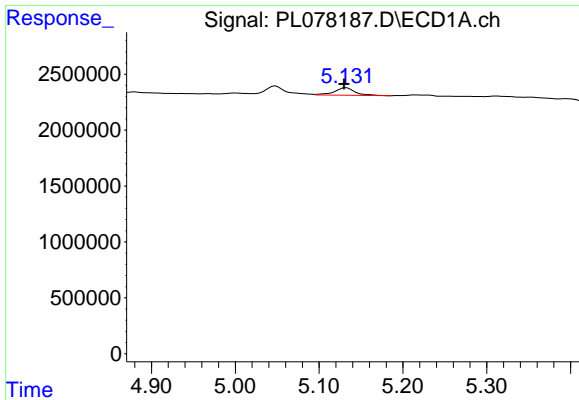
#3 gamma-BHC (Lindane)  
 R.T.: 3.437 min  
 Delta R.T.: 0.000 min  
 Response: 91888481  
 Conc: 20.07 ng/ml



#4 Heptachlor  
 R.T.: 4.792 min  
 Delta R.T.: 0.003 min  
 Response: 50731769  
 Conc: 21.04 ng/ml

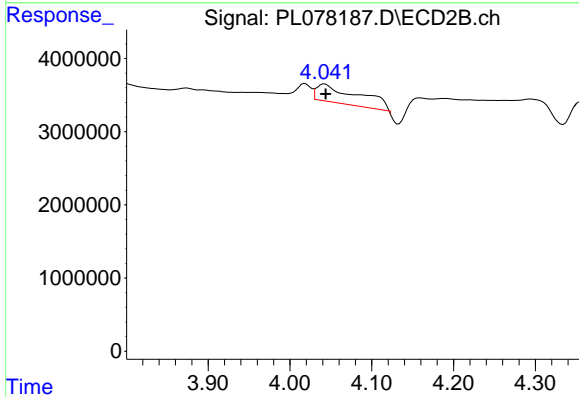


#4 Heptachlor  
 R.T.: 3.769 min  
 Delta R.T.: 0.000 min  
 Response: 89704253  
 Conc: 19.53 ng/ml

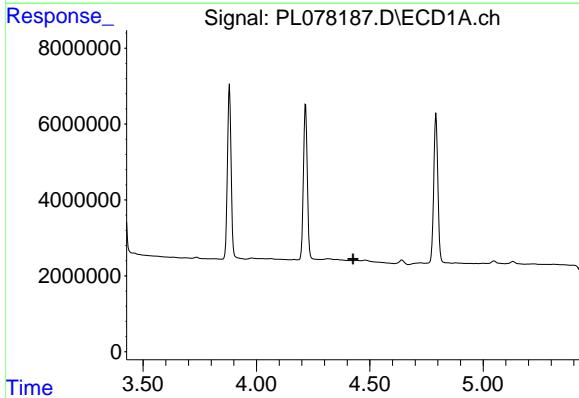


#5 Aldrin  
 R.T.: 5.132 min  
 Delta R.T.: 0.003 min  
 Response: 1152080  
 Conc: 0.53 ng/ml

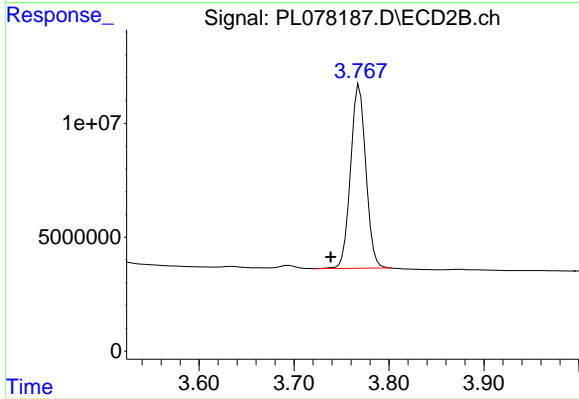
Instrument :  
 ECD\_L  
 ClientSampleId :



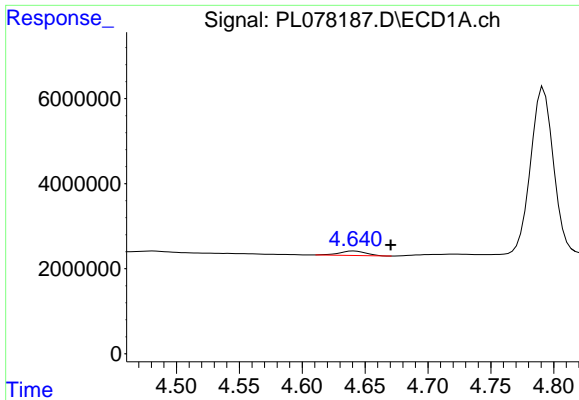
#5 Aldrin  
 R.T.: 4.043 min  
 Delta R.T.: -0.001 min  
 Response: 8802461  
 Conc: 1.97 ng/ml



#6 beta-BHC  
 R.T.: 0.000 min  
 Exp R.T. : 4.427 min  
 Response: 0  
 Conc: N.D.



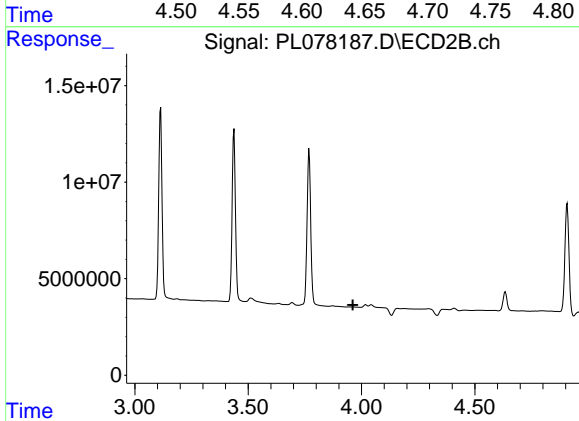
#6 beta-BHC  
 R.T.: 3.769 min  
 Delta R.T.: 0.030 min  
 Response: 89704253  
 Conc: 45.18 ng/ml



#7 delta-BHC

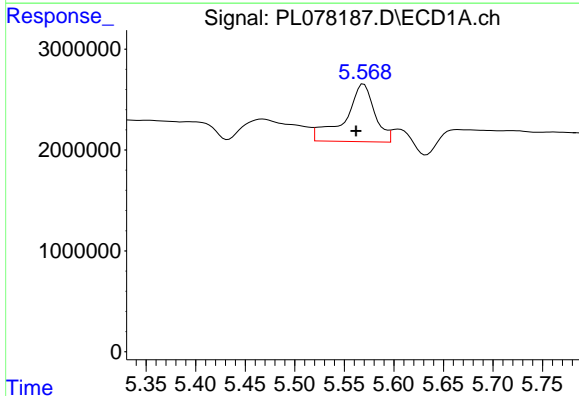
R.T.: 4.641 min  
 Delta R.T.: -0.029 min  
 Response: 1568909  
 Conc: 0.64 ng/ml

Instrument :  
 ECD\_L  
 ClientSampleId :



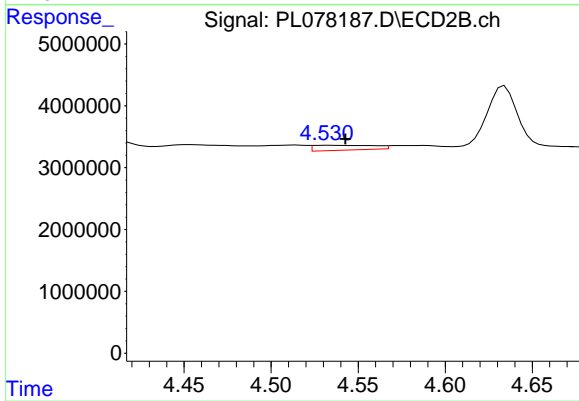
#7 delta-BHC

R.T.: 0.000 min  
 Exp R.T. : 3.961 min  
 Response: 0  
 Conc: N.D.



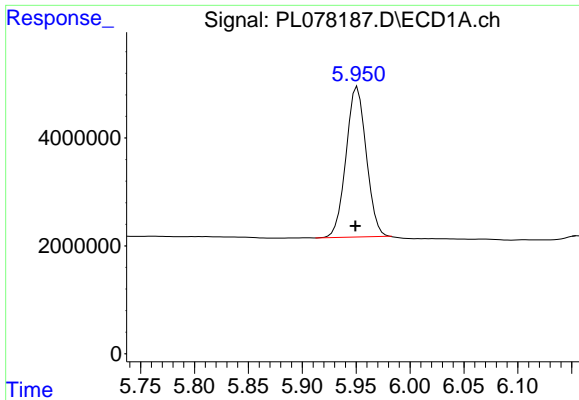
#8 Heptachlor epoxide

R.T.: 5.570 min  
 Delta R.T.: 0.008 min  
 Response: 11905297  
 Conc: 5.63 ng/ml



#8 Heptachlor epoxide

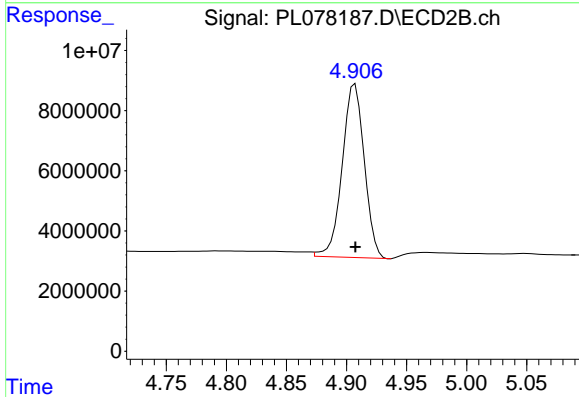
R.T.: 4.532 min  
 Delta R.T.: -0.010 min  
 Response: 1911871  
 Conc: 0.48 ng/ml



#9 Endosulfan I

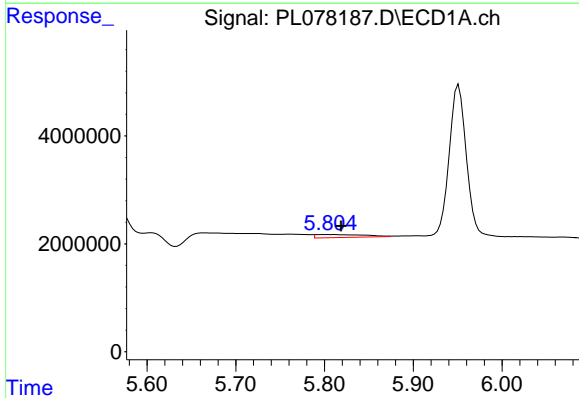
R.T.: 5.951 min  
 Delta R.T.: 0.002 min  
 Response: 36523522  
 Conc: 20.56 ng/ml

Instrument :  
 ECD\_L  
 ClientSampleId :



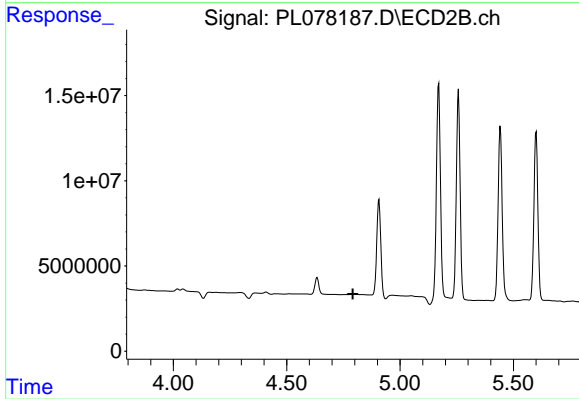
#9 Endosulfan I

R.T.: 4.907 min  
 Delta R.T.: 0.000 min  
 Response: 73898312  
 Conc: 20.44 ng/ml



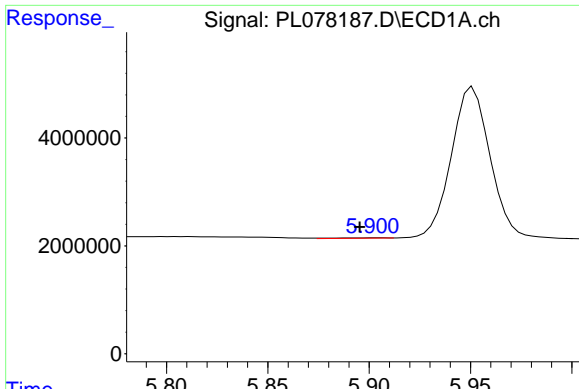
#10 trans-Chlordane

R.T.: 5.805 min  
 Delta R.T.: -0.014 min  
 Response: 2114394  
 Conc: 1.08 ng/ml



#10 trans-Chlordane

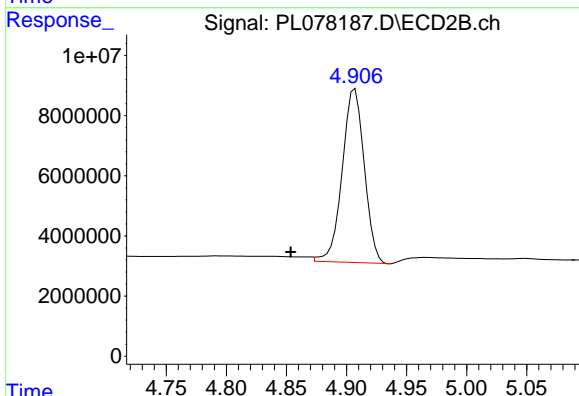
R.T.: 0.000 min  
 Exp R.T. : 4.792 min  
 Response: 0  
 Conc: N.D.



#11 cis-Chlordane

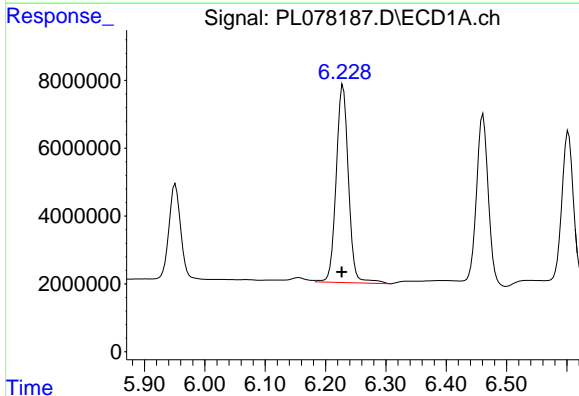
R.T.: 5.903 min  
 Delta R.T.: 0.008 min  
 Response: 112505  
 Conc: N.D.

Instrument :  
 ECD\_L  
 ClientSampleId :



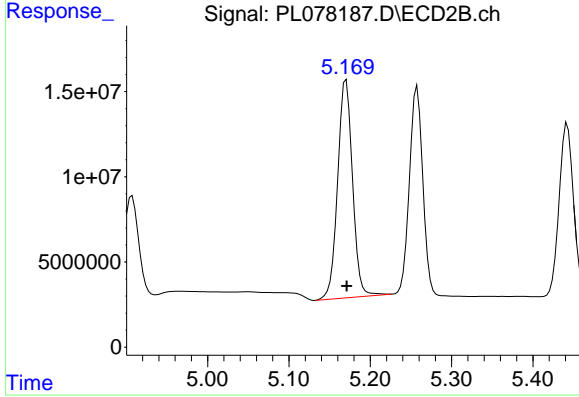
#11 cis-Chlordane

R.T.: 4.907 min  
 Delta R.T.: 0.053 min  
 Response: 73898312  
 Conc: 19.16 ng/ml



#13 Dieldrin

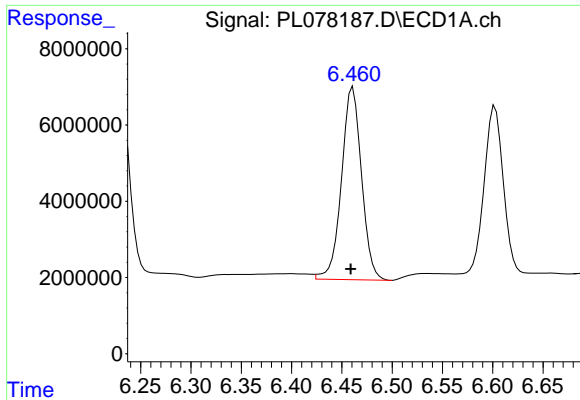
R.T.: 6.229 min  
 Delta R.T.: 0.002 min  
 Response: 82674987  
 Conc: 44.45 ng/ml



#13 Dieldrin

R.T.: 5.170 min  
 Delta R.T.: 0.000 min  
 Response: 162476349  
 Conc: 41.78 ng/ml

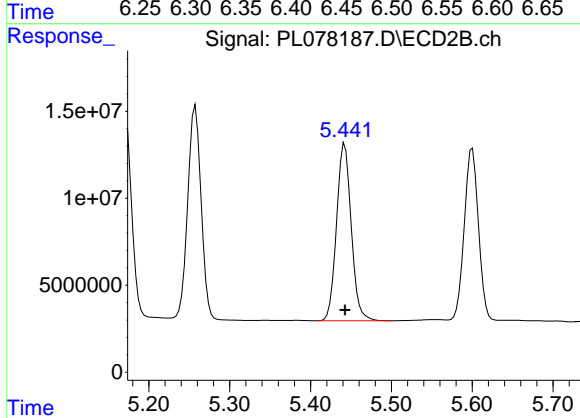




#14 Endrin

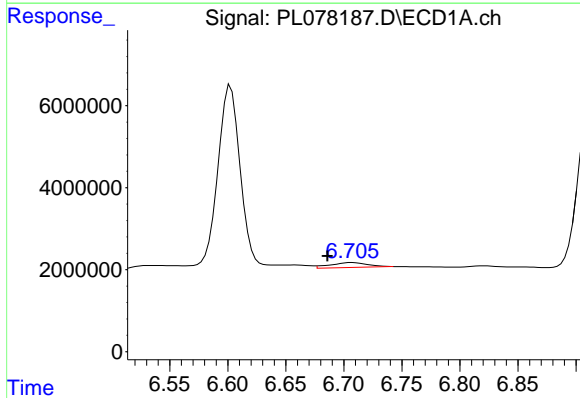
R.T.: 6.461 min  
 Delta R.T.: 0.002 min  
 Response: 69818255  
 Conc: 43.30 ng/ml

Instrument :  
 ECD\_L  
 ClientSampleId :



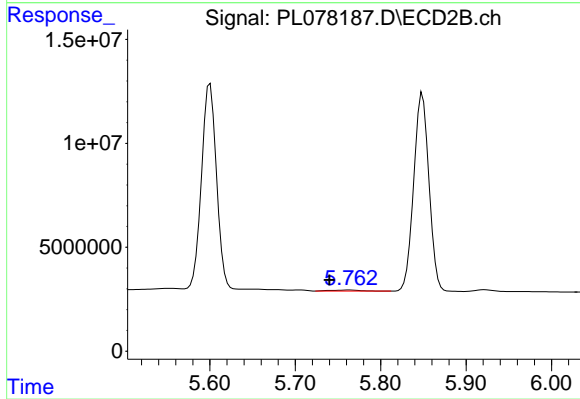
#14 Endrin

R.T.: 5.442 min  
 Delta R.T.: 0.000 min  
 Response: 128595722  
 Conc: 39.88 ng/ml



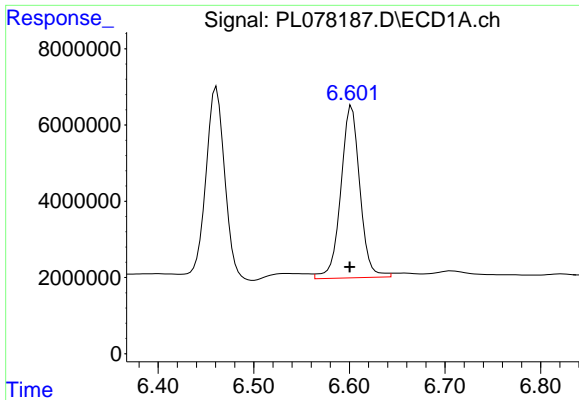
#15 Endosulfan II

R.T.: 6.707 min  
 Delta R.T.: 0.021 min  
 Response: 2601505  
 Conc: 1.61 ng/ml



#15 Endosulfan II

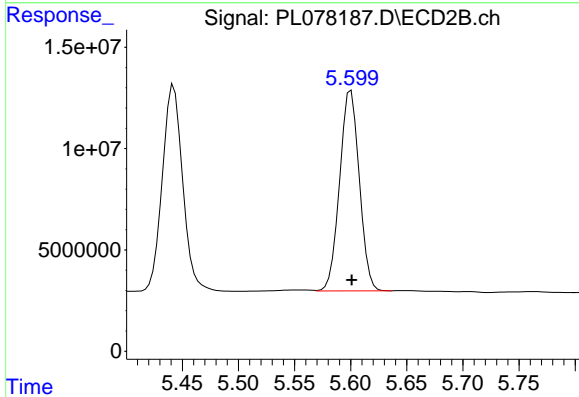
R.T.: 5.764 min  
 Delta R.T.: 0.024 min  
 Response: 1126183  
 Conc: 0.36 ng/ml



#16 4,4'-DDD

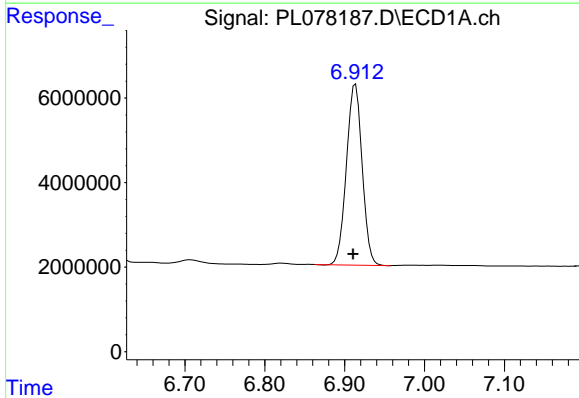
R.T.: 6.602 min  
 Delta R.T.: 0.002 min  
 Response: 62833457  
 Conc: 46.31 ng/ml

Instrument :  
 ECD\_L  
 ClientSampleId :



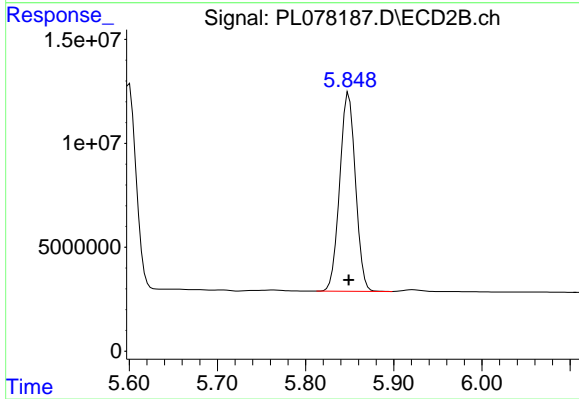
#16 4,4'-DDD

R.T.: 5.600 min  
 Delta R.T.: 0.000 min  
 Response: 120597325  
 Conc: 39.93 ng/ml



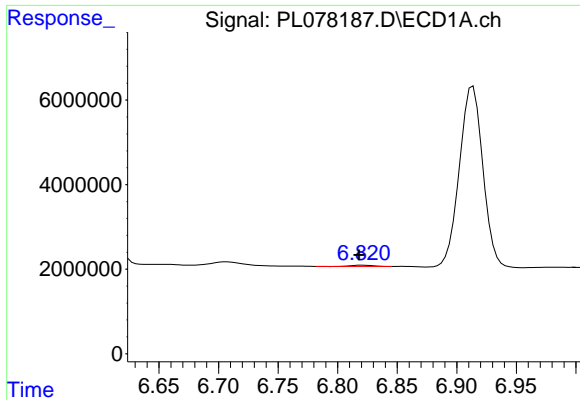
#17 4,4'-DDT

R.T.: 6.914 min  
 Delta R.T.: 0.003 min  
 Response: 58631840  
 Conc: 40.29 ng/ml



#17 4,4'-DDT

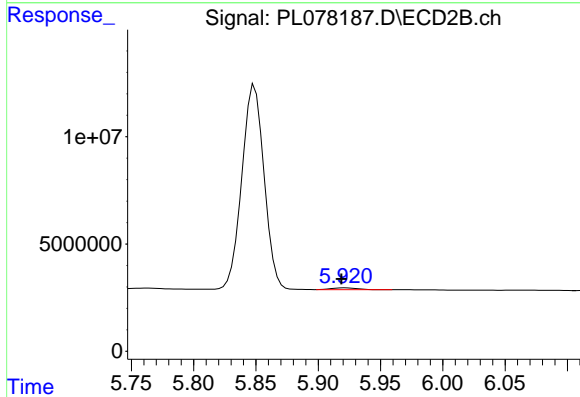
R.T.: 5.849 min  
 Delta R.T.: 0.000 min  
 Response: 118648107  
 Conc: 39.27 ng/ml



#18 Endrin aldehyde

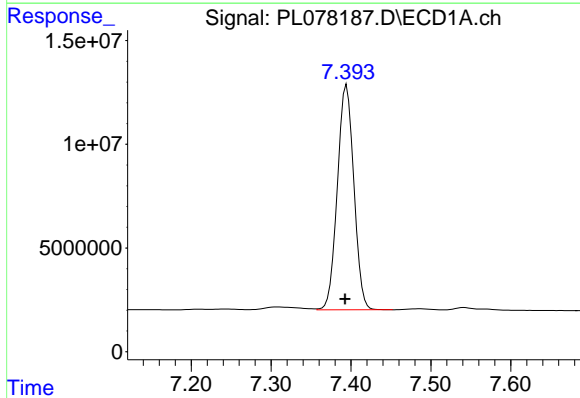
R.T.: 6.821 min  
 Delta R.T.: 0.003 min  
 Response: 347106  
 Conc: 0.26 ng/ml

Instrument :  
 ECD\_L  
 ClientSampleId :



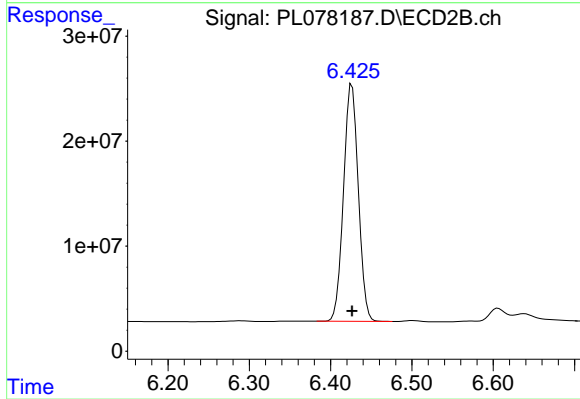
#18 Endrin aldehyde

R.T.: 5.921 min  
 Delta R.T.: 0.003 min  
 Response: 1223984  
 Conc: 0.47 ng/ml



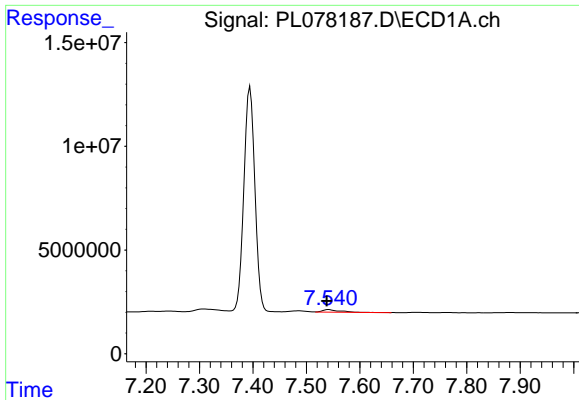
#20 Methoxychlor

R.T.: 7.395 min  
 Delta R.T.: 0.002 min  
 Response: 155556454  
 Conc: 207.41 ng/ml



#20 Methoxychlor

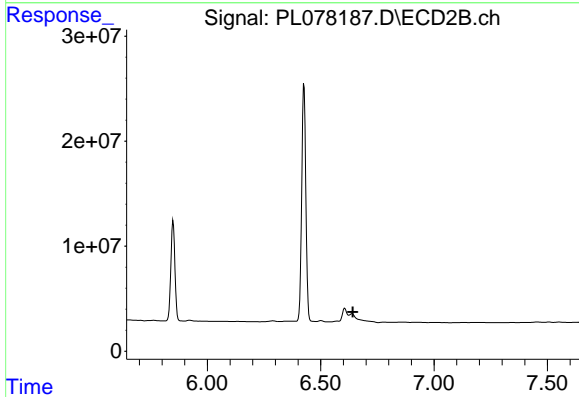
R.T.: 6.426 min  
 Delta R.T.: 0.000 min  
 Response: 284897891  
 Conc: 191.43 ng/ml



#21 Endrin ketone

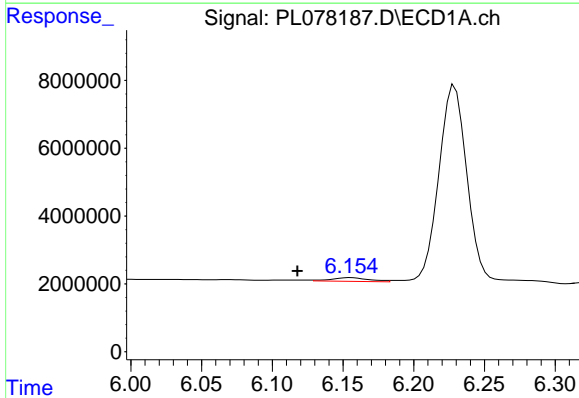
R.T.: 7.541 min  
 Delta R.T.: 0.003 min  
 Response: 2671845  
 Conc: 1.66 ng/ml

Instrument :  
 ECD\_L  
 ClientSampleId :



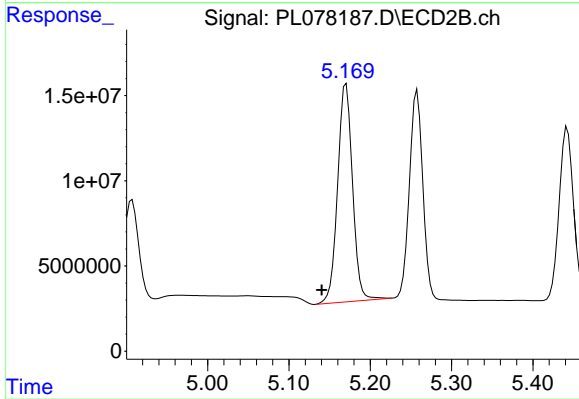
#21 Endrin ketone

R.T.: 6.638 min  
 Delta R.T.: -0.003 min  
 Response: -10867949  
 Conc: N.D.



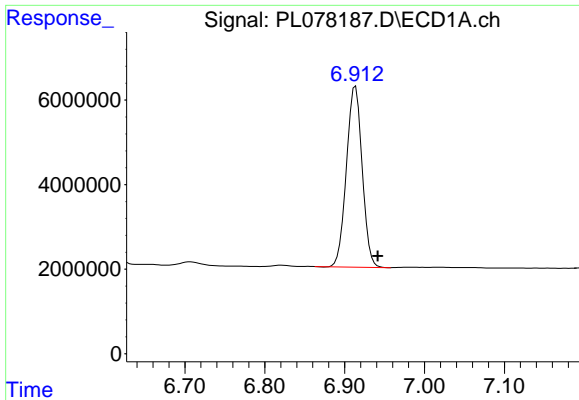
#22 Toxaphene-1

R.T.: 6.156 min  
 Delta R.T.: 0.038 min  
 Response: 2043103  
 Conc: 145.99 ng/ml



#22 Toxaphene-1

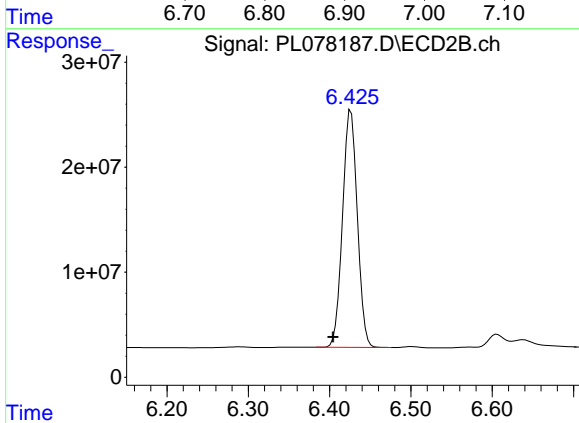
R.T.: 5.170 min  
 Delta R.T.: 0.030 min  
 Response: 162476349  
 Conc: 10046.04 ng/ml



#23 Toxaphene-2

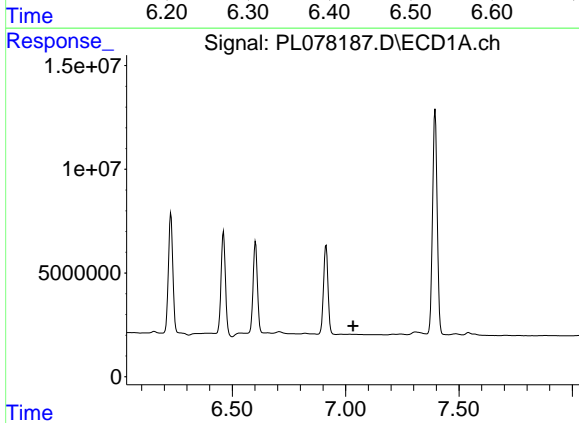
R.T.: 6.914 min  
 Delta R.T.: -0.028 min  
 Response: 58631840  
 Conc: 1433.76 ng/ml

Instrument :  
 ECD\_L  
 ClientSampleId :



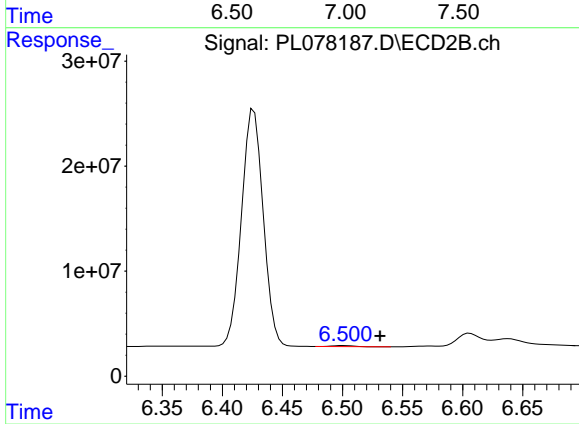
#23 Toxaphene-2

R.T.: 6.426 min  
 Delta R.T.: 0.022 min  
 Response: 284897891  
 Conc: 4236.61 ng/ml



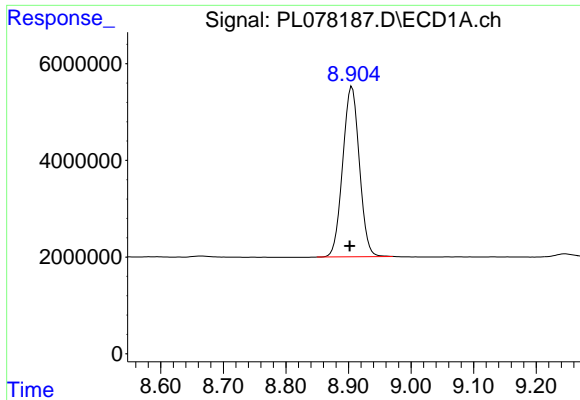
#24 Toxaphene-3

R.T.: 0.000 min  
 Exp R.T. : 7.033 min  
 Response: 0  
 Conc: N.D.



#24 Toxaphene-3

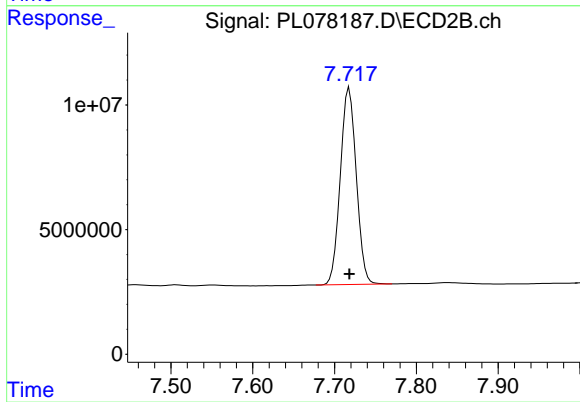
R.T.: 6.502 min  
 Delta R.T.: -0.030 min  
 Response: 1216681  
 Conc: 13.36 ng/ml



#27 Decachlorobiphenyl

R.T.: 8.906 min  
Delta R.T.: 0.003 min  
Response: 65342284  
Conc: 43.11 ng/ml

Instrument :  
ECD\_L  
ClientSampleId :



#27 Decachlorobiphenyl

R.T.: 7.718 min  
Delta R.T.: 0.000 min  
Response: 106764770  
Conc: 39.43 ng/ml