

Data Path : Z:\pestpcbsrv\HPCHEM1\ECD_L\Data\PL100722\
 Data File : PL078184.D
 Signal(s) : Signal #1: ECD1A.ch Signal #2: ECD2B.ch
 Acq On : 06 Oct 2022 13:50
 Operator : AR\AJ
 Sample : N4519-04
 Misc : TOX MDL 100PPB
 ALS Vial : 9 Sample Multiplier: 1

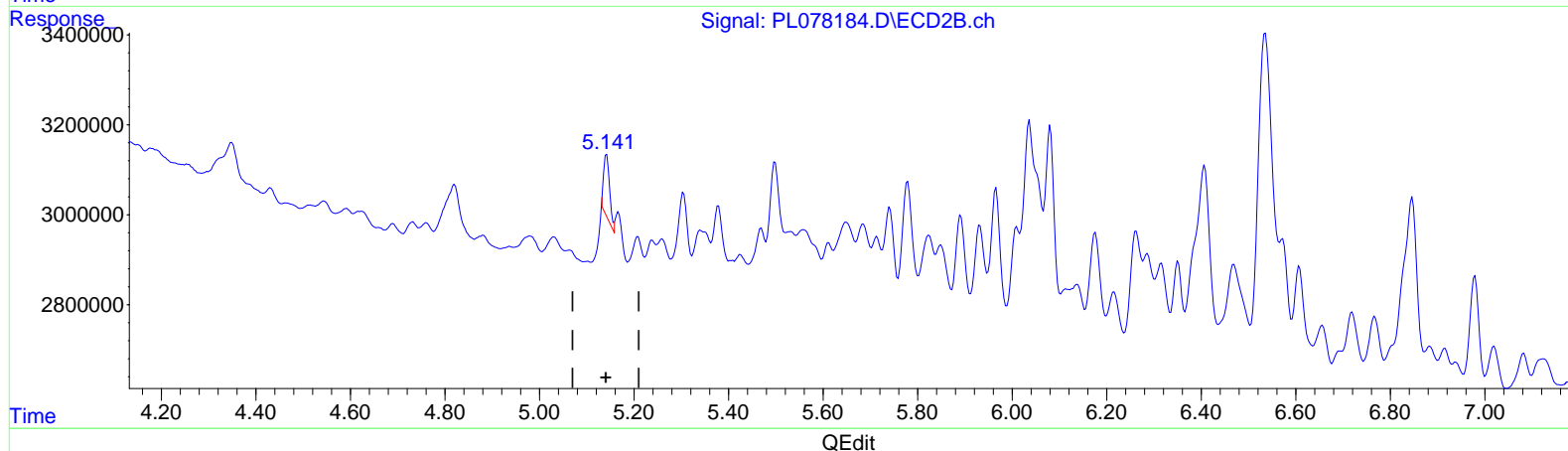
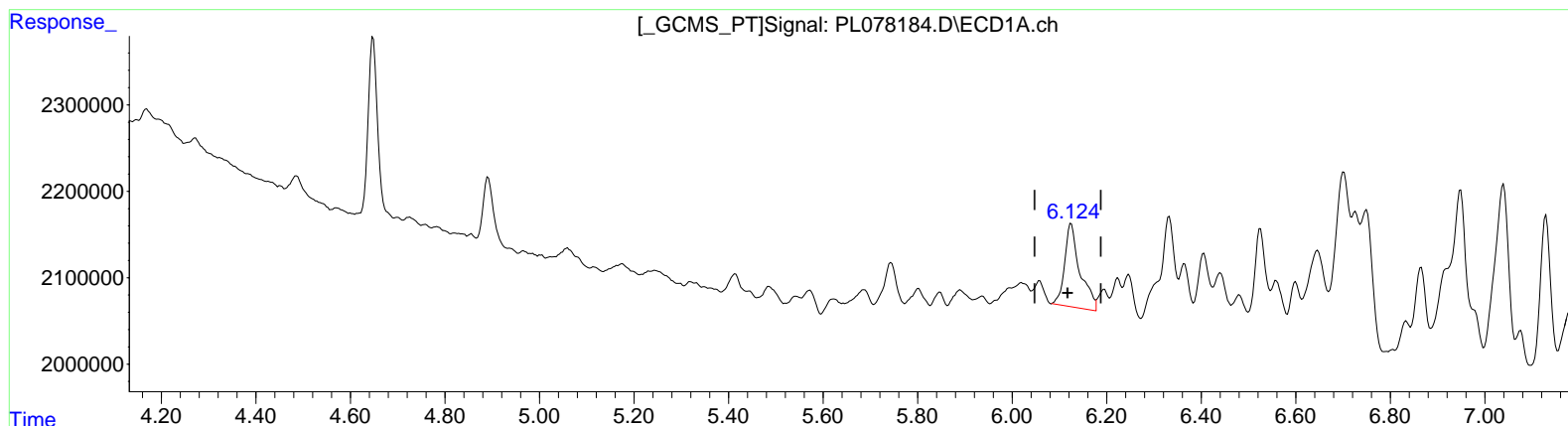
Instrument :
 ECD_L
ClientSampleId :
 MDL-SOIL-QT4-2022-08

Manual IntegrationsAPPROVED

Reviewed By :Abdul Mirza 10/07/2022
 Supervised By :Ankita Jodhani 10/07/2022

Integration File signal 1: autoint1.e
 Integration File signal 2: autoint2.e
 Quant Time: Oct 07 00:34:29 2022
 Quant Method : Z:\pestpcbsrv\HPCHEM1\ECD_L\methods\PL100522CLP.M
 Quant Title : GC Extractables
 QLast Update : Wed Oct 05 01:39:00 2022
 Response via : Initial Calibration
 Integrator: ChemStation

Volume Inj. : 1 µl
 Signal #1 Phase : ZB-MR2 Signal #2 Phase: ZB-MR1
 Signal #1 Info : 30M x 0.32mm x0.2 Signal #2 Info : 30M x 0.32mm x 0.50µm



(22) Toxaphene-1
 6.125min 155.020 ng/ml
 response 2169409

(22) Toxaphene-1 #2
 5.142min 75.755 ng/ml
 response 1225202

Data Path : Z:\pestpcbsrv\HPCHEM1\ECD_L\Data\PL100722\
 Data File : PL078184.D
 Signal(s) : Signal #1: ECD1A.ch Signal #2: ECD2B.ch
 Acq On : 06 Oct 2022 13:50
 Operator : AR\AJ
 Sample : N4519-04
 Misc : TOX MDL 100PPB
 ALS Vial : 9 Sample Multiplier: 1

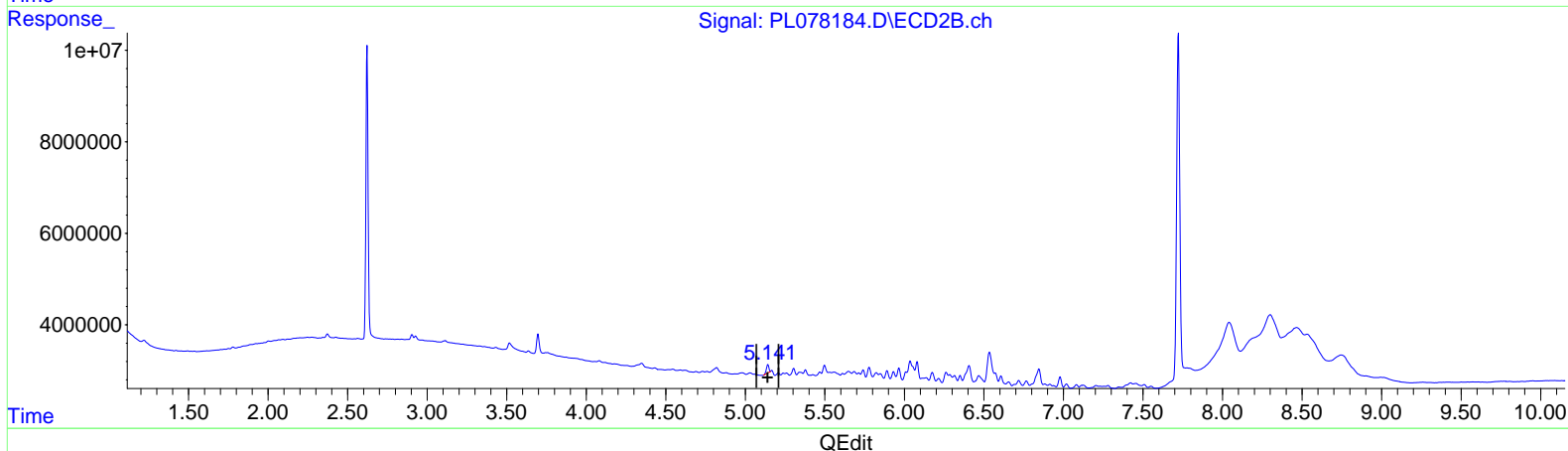
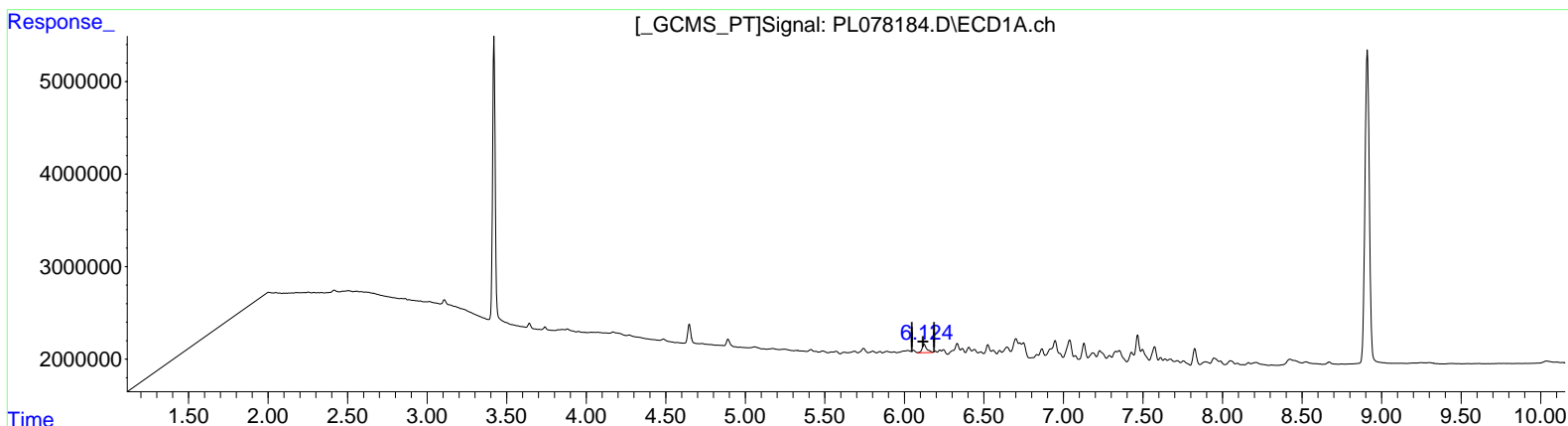
Instrument :
 ECD_L
 ClientSampleId :
 MDL-SOIL-QT4-2022-08

Manual Integrations APPROVED

Reviewed By : Abdul Mirza 10/07/2022
 Supervised By : Ankita Jodhani 10/07/2022

Integration File signal 1: autoint1.e
 Integration File signal 2: autoint2.e
 Quant Time: Oct 07 00:34:29 2022
 Quant Method : Z:\pestpcbsrv\HPCHEM1\ECD_L\methods\PL100522CLP.M
 Quant Title : GC Extractables
 QLast Update : Wed Oct 05 01:39:00 2022
 Response via : Initial Calibration
 Integrator: ChemStation

Volume Inj. : 1 µl
 Signal #1 Phase : ZB-MR2 Signal #2 Phase: ZB-MR1
 Signal #1 Info : 30M x 0.32mm x 0.2 Signal #2 Info : 30M x 0.32mm x 0.50µm



(22) Toxaphene-1
 6.124min 133.594 ng/ml m
 response 1869577

(22) Toxaphene-1 #2
 5.141min 124.223 ng/ml m
 response 2009073