

Data Path : Z:\pestpcbsrv\HPCHEM1\ECD_L\Data\PL100818\
 Data File : PL040803.D
 Signal(s) : Signal #1: ECD1A.ch Signal #2: ECD2B.ch
 Acq On : 09 Oct 2018 00:53
 Operator : AJ\SJ
 Sample : PSTDCCC050
 Misc :
 ALS Vial : 4 Sample Multiplier: 1

Instrument :
 ECD_L
 ClientSampleId :

Integration File signal 1: autoint1.e
 Integration File signal 2: autoint2.e
 Quant Time: Oct 09 02:17:39 2018
 Quant Method : Z:\pestpcbsrv\HPCHEM1\ECD_L\methods\PL0100518.M
 Quant Title : GC Extractables
 QLast Update : Sat Oct 06 04:55:11 2018
 Response via : Initial Calibration
 Integrator: ChemStation

Volume Inj. : 2 µl
 Signal #1 Phase : ZB-MR2 Signal #2 Phase: ZB-MR2
 Signal #1 Info : 30M x 0.32mm x0.5 Signal #2 Info : 30M x 0.32mm x0.25µm

	Compound	RT#1	RT#2	Resp#1	Resp#2	ng/ml	ng/ml

System Monitoring Compounds							
1)	SA Tetrachlo...	3.207	3.804	456.9E6	179.3E6	50.927	54.636
28)	SA Decachlor...	7.806	8.724	402.4E6	126.9E6	37.213	45.067
Target Compounds							
2)	A alpha-BHC	3.629	4.175	737.9E6	268.3E6	51.737	55.452
3)	MA gamma-BHC...	3.898	4.449	680.3E6	242.3E6	52.162	54.691
4)	MA Heptachlor	4.171	4.947	727.9E6	227.7E6	50.775	53.518
5)	MB Aldrin	4.403	5.243	653.4E6	211.7E6	52.762	53.907
6)	B beta-BHC	4.152	4.613	248.2E6	103.6E6	52.872	54.271
7)	B delta-BHC	4.338	4.821	683.1E6	236.3E6	52.274	57.700
8)	B Heptachlo...	4.833	5.619	607.3E6	190.5E6	50.445	56.284
9)	A Endosulfan I	5.156	5.966	570.7E6	173.8E6	48.644	51.424
10)	B gamma-Chl...	5.051	5.849	632.9E6	198.6E6	49.083	56.686
11)	B alpha-Chl...	5.106	5.921	605.9E6	188.4E6	48.746	52.504
12)	B 4,4'-DDE	5.276	6.080	620.7E6	181.0E6	48.599	50.379
13)	MA Dieldrin	5.392	6.218	615.4E6	180.0E6	48.179	50.377
14)	MA Endrin	5.641	6.429	554.3E6	155.8E6	45.978	48.665
15)	B Endosulfa...	5.915	6.633	541.1E6	150.4E6	47.084	43.213
16)	A 4,4'-DDD	5.781	6.558	510.3E6	141.1E6	53.114	51.231
17)	MA 4,4'-DDT	6.011	6.853	432.4E6	128.6E6	42.111	42.124
18)	B Endrin al...	6.081	6.755	417.8E6	126.2E6	43.408	47.133
19)	B Endosulfa...	6.291	6.976	462.2E6	137.2E6	42.540	47.024
20)	A Methoxychlor	6.557	7.310	224.9E6	68713565	40.253	43.150
21)	B Endrin ke...	6.766	7.433	479.2E6	141.8E6	39.678	46.444
23)	Chlordane-1	3.964	4.821	12874334	236.3E6	30.542	1634.382 #
24)	Chlordane-2	0.000	5.243	0	211.7E6	N.D.	1397.824 #
25)	Chlordane-3	5.051	5.849	632.9E6	198.6E6	444.079	405.995
26)	Chlordane-4	5.106	5.921	605.9E6	188.4E6	439.644	320.733 #
27)	Chlordane-5	5.915	6.755	541.1E6	126.2E6	1191.022	1109.195

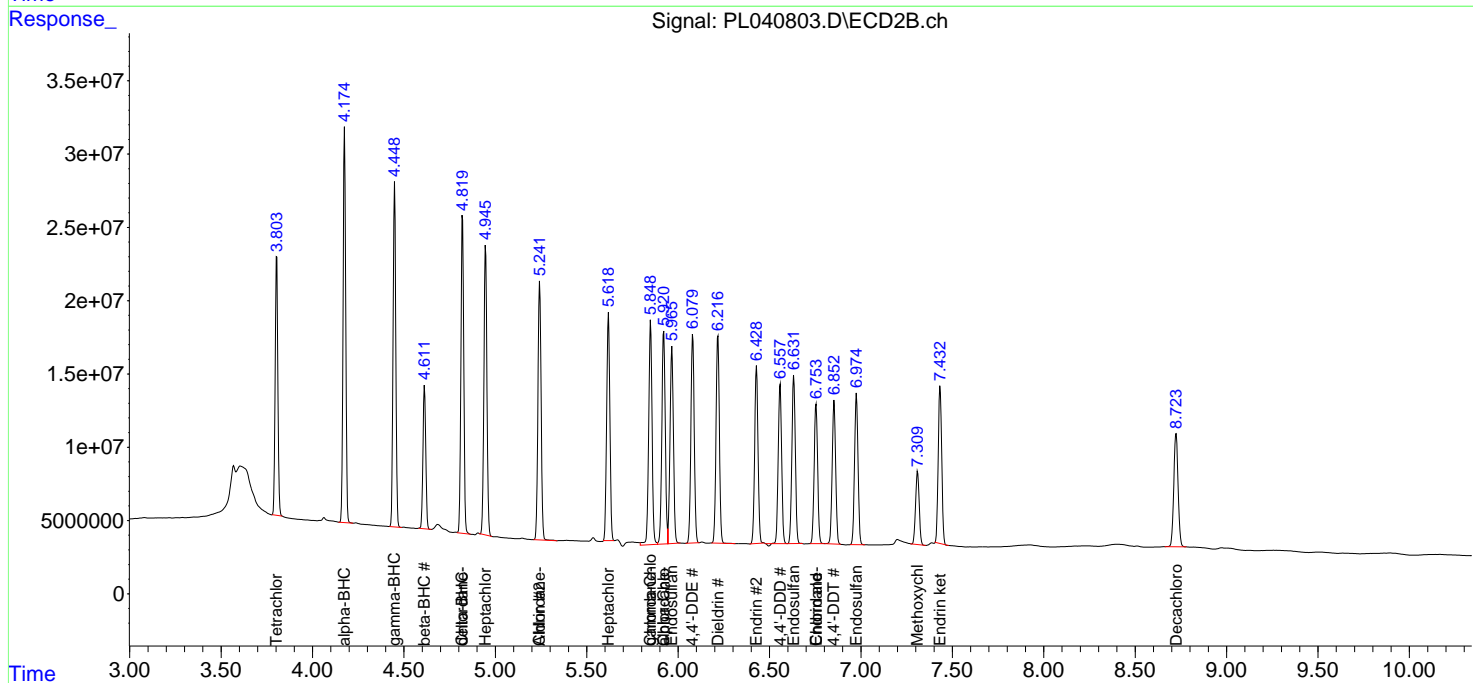
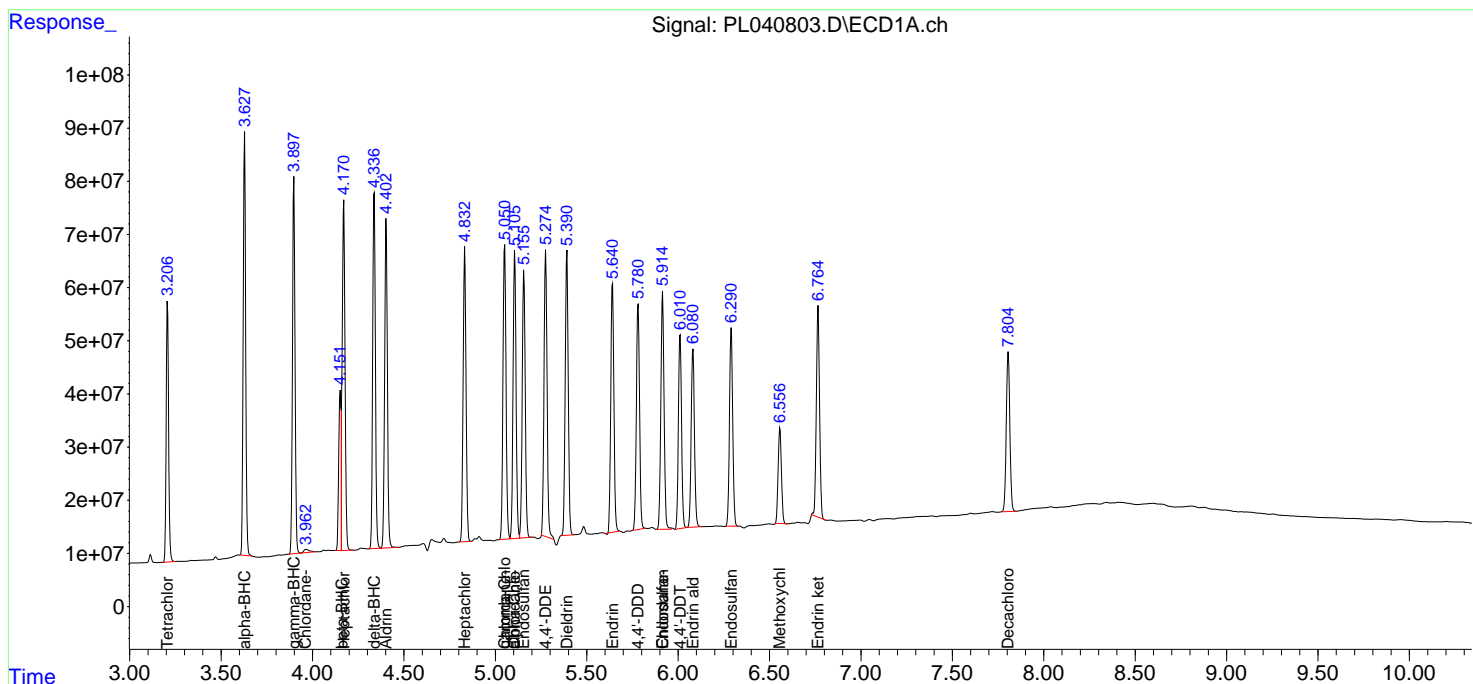
(f)=RT Delta > 1/2 Window (#)=Amounts differ by > 25% (m)=manual int.

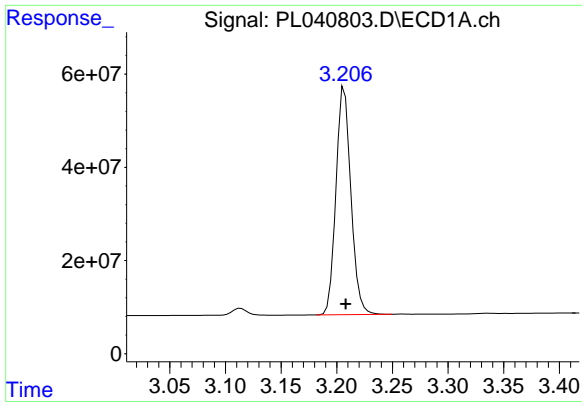
Data Path : Z:\pestpcbsrv\HPCHEM1\ECD_L\Data\PL100818\
 Data File : PL040803.D
 Signal(s) : Signal #1: ECD1A.ch Signal #2: ECD2B.ch
 Acq On : 09 Oct 2018 00:53
 Operator : AJ\SJ
 Sample : PSTDCCC050
 Misc :
 ALS Vial : 4 Sample Multiplier: 1

Instrument :
 ECD_L
 ClientSampled :

Integration File signal 1: autoint1.e
 Integration File signal 2: autoint2.e
 Quant Time: Oct 09 02:17:39 2018
 Quant Method : Z:\pestpcbsrv\HPCHEM1\ECD_L\methods\PL0100518.M
 Quant Title : GC Extractables
 QLast Update : Sat Oct 06 04:55:11 2018
 Response via : Initial Calibration
 Integrator: ChemStation

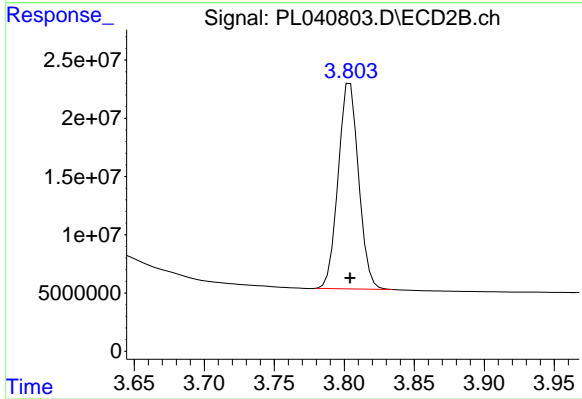
Volume Inj. : 2 µl
 Signal #1 Phase : ZB-MR1 Signal #2 Phase: ZB-MR2
 Signal #1 Info : 30M x 0.32mm x0.5 Signal #2 Info : 30M x 0.32mm x0.25µm



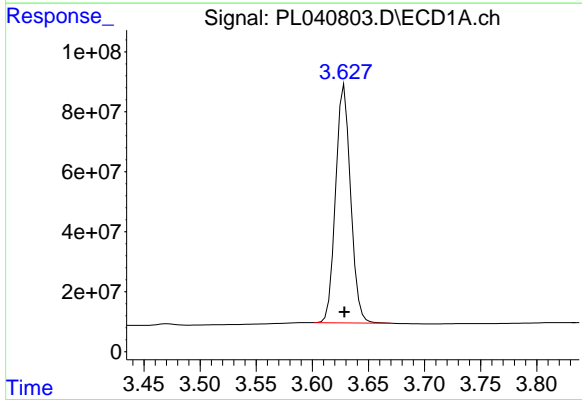


#1 Tetrachloro-m-xylene
 R.T.: 3.207 min
 Delta R.T.: 0.000 min
 Response: 456895297
 Conc: 50.93 ng/ml

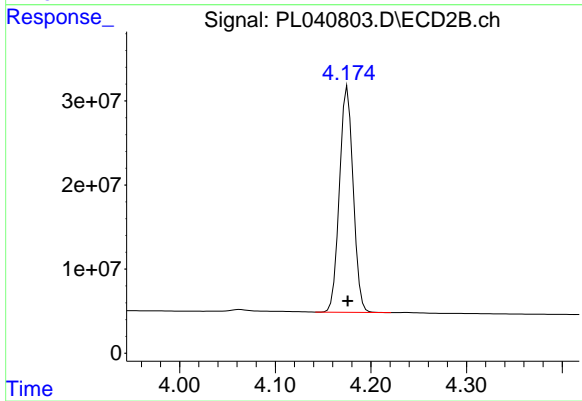
Instrument :
 ECD_L
 ClientSampleId :



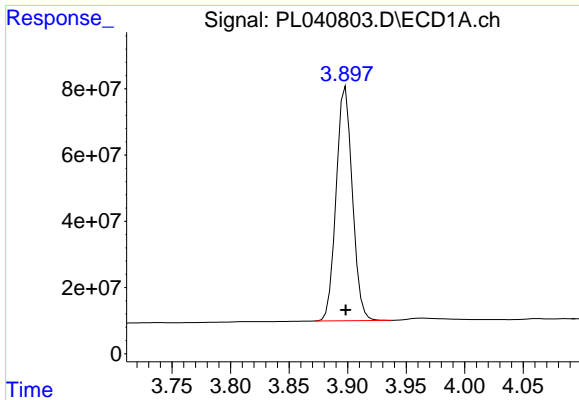
#1 Tetrachloro-m-xylene
 R.T.: 3.804 min
 Delta R.T.: 0.000 min
 Response: 179345926
 Conc: 54.64 ng/ml



#2 alpha-BHC
 R.T.: 3.629 min
 Delta R.T.: 0.000 min
 Response: 737946881
 Conc: 51.74 ng/ml

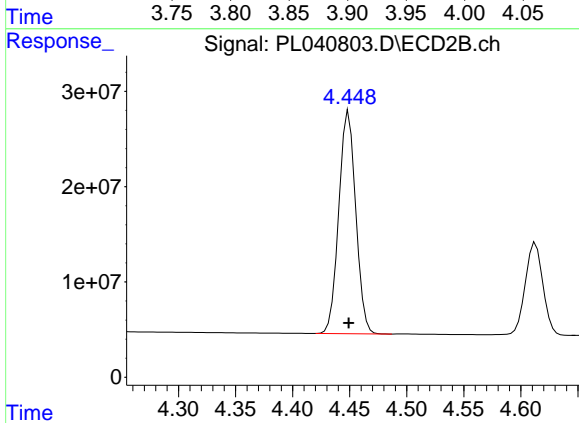


#2 alpha-BHC
 R.T.: 4.175 min
 Delta R.T.: 0.000 min
 Response: 268332398
 Conc: 55.45 ng/ml

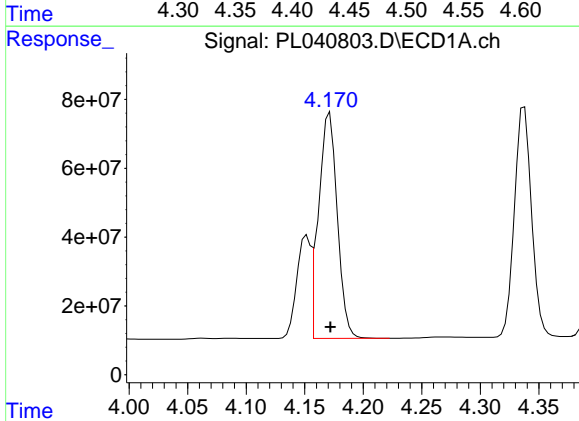


#3 gamma-BHC (Lindane)
 R.T.: 3.898 min
 Delta R.T.: 0.000 min
 Response: 680264969
 Conc: 52.16 ng/ml

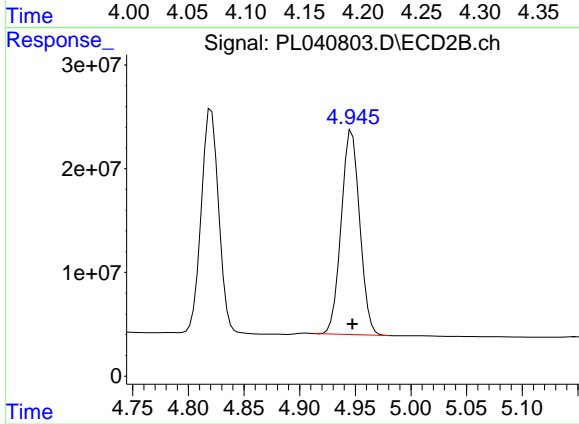
Instrument :
 ECD_L
 ClientSampled :



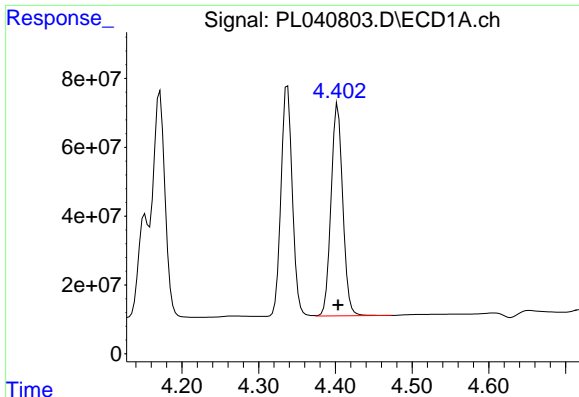
#3 gamma-BHC (Lindane)
 R.T.: 4.449 min
 Delta R.T.: 0.000 min
 Response: 242311286
 Conc: 54.69 ng/ml



#4 Heptachlor
 R.T.: 4.171 min
 Delta R.T.: 0.000 min
 Response: 727909828
 Conc: 50.77 ng/ml

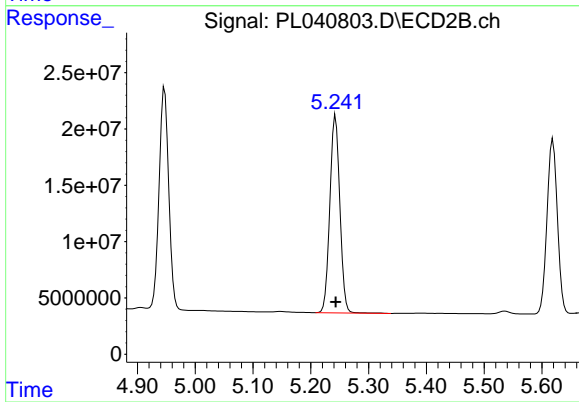


#4 Heptachlor
 R.T.: 4.947 min
 Delta R.T.: 0.000 min
 Response: 227677206
 Conc: 53.52 ng/ml

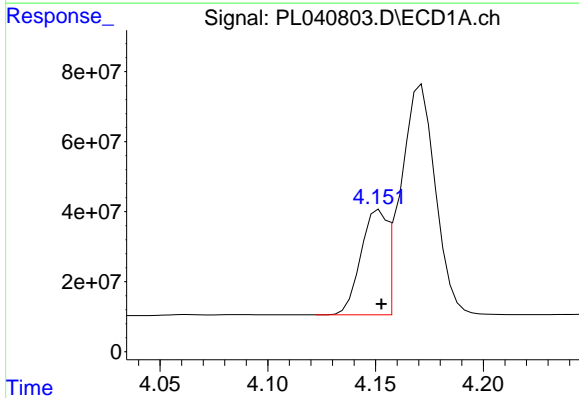


#5 Aldrin
 R.T.: 4.403 min
 Delta R.T.: 0.000 min
 Response: 653366630
 Conc: 52.76 ng/ml

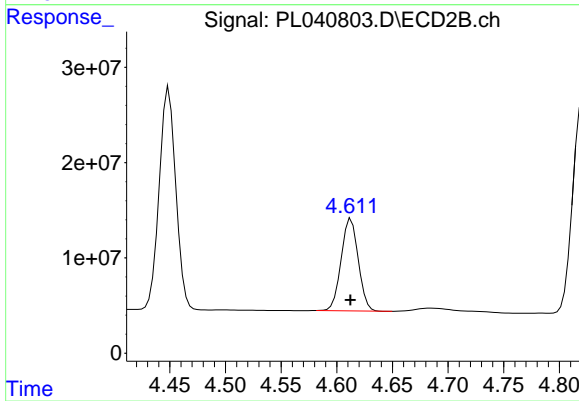
Instrument :
 ECD_L
 ClientSampled :



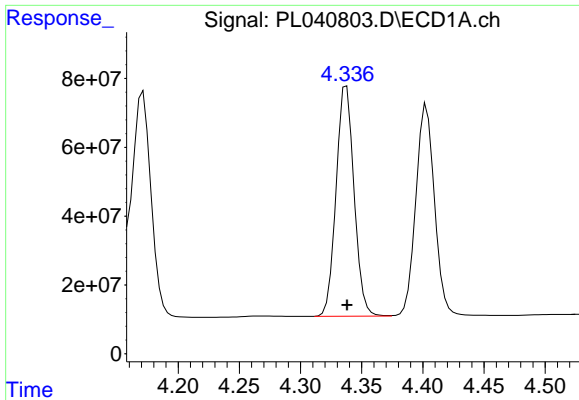
#5 Aldrin
 R.T.: 5.243 min
 Delta R.T.: 0.000 min
 Response: 211670622
 Conc: 53.91 ng/ml



#6 beta-BHC
 R.T.: 4.152 min
 Delta R.T.: 0.000 min
 Response: 248190977
 Conc: 52.87 ng/ml

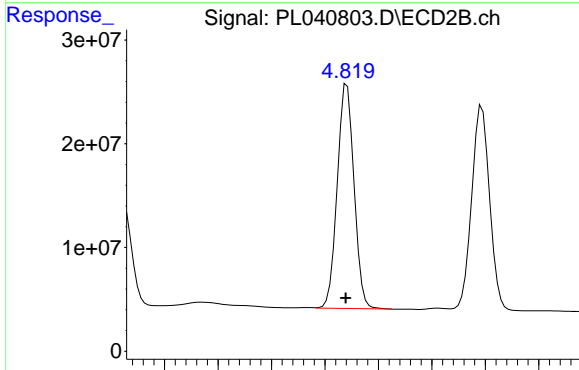


#6 beta-BHC
 R.T.: 4.613 min
 Delta R.T.: 0.000 min
 Response: 103563902
 Conc: 54.27 ng/ml

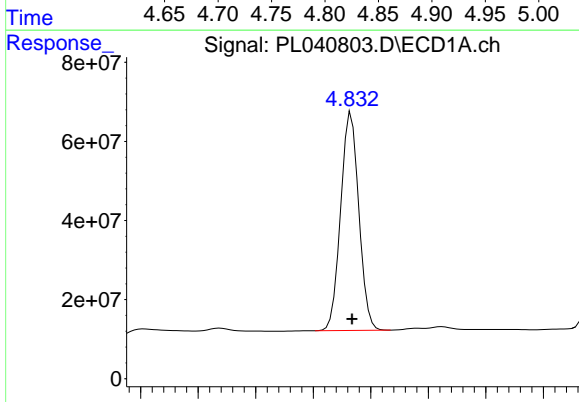


#7 delta-BHC
 R.T.: 4.338 min
 Delta R.T.: 0.000 min
 Response: 683134976
 Conc: 52.27 ng/ml

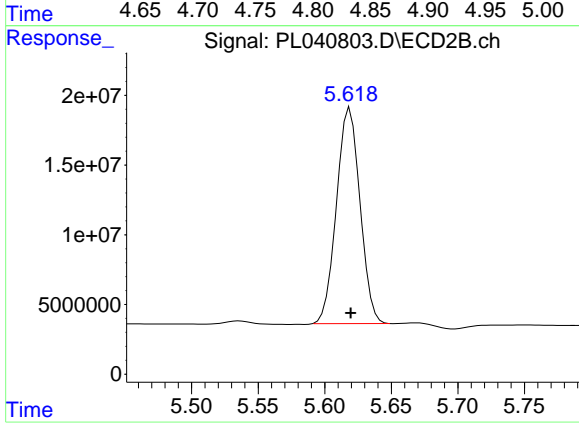
Instrument :
 ECD_L
 ClientSampleId :



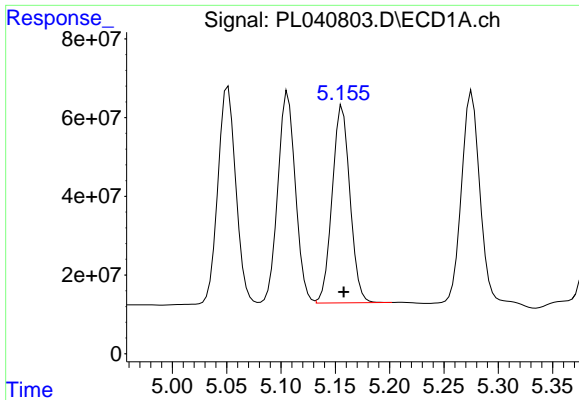
#7 delta-BHC
 R.T.: 4.821 min
 Delta R.T.: 0.001 min
 Response: 236329633
 Conc: 57.70 ng/ml



#8 Heptachlor epoxide
 R.T.: 4.833 min
 Delta R.T.: 0.000 min
 Response: 607307558
 Conc: 50.45 ng/ml

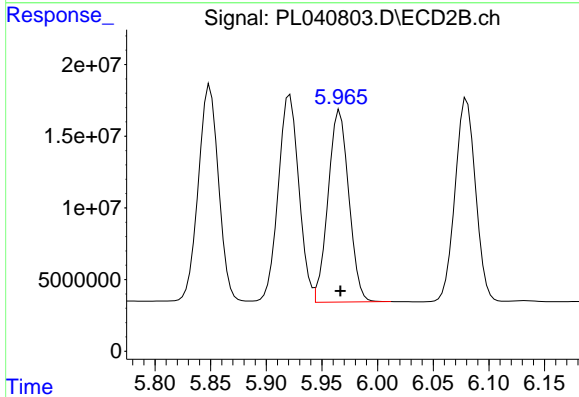


#8 Heptachlor epoxide
 R.T.: 5.619 min
 Delta R.T.: 0.000 min
 Response: 190501773
 Conc: 56.28 ng/ml

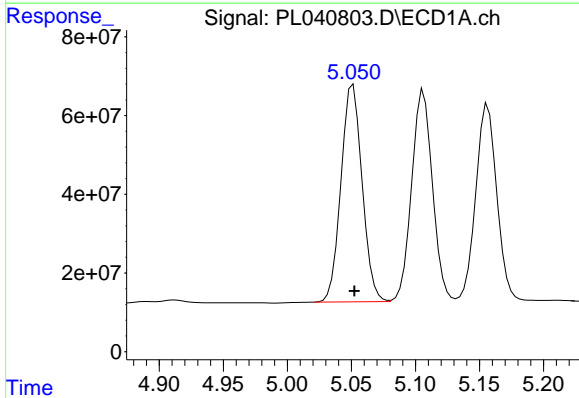


#9 Endosulfan I
 R.T.: 5.156 min
 Delta R.T.: -0.001 min
 Response: 570667254
 Conc: 48.64 ng/ml

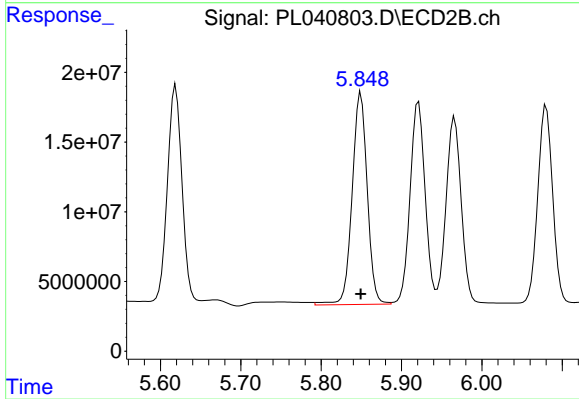
Instrument :
 ECD_L
 ClientSampled :



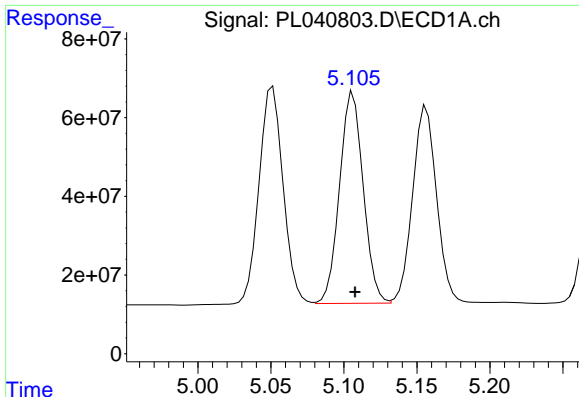
#9 Endosulfan I
 R.T.: 5.966 min
 Delta R.T.: 0.000 min
 Response: 173772958
 Conc: 51.42 ng/ml



#10 gamma-Chlordane
 R.T.: 5.051 min
 Delta R.T.: -0.001 min
 Response: 632905225
 Conc: 49.08 ng/ml



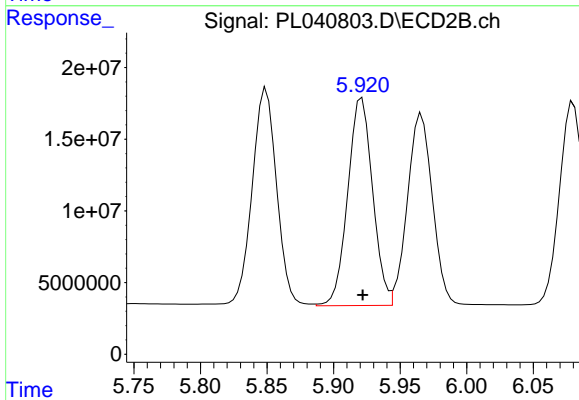
#10 gamma-Chlordane
 R.T.: 5.849 min
 Delta R.T.: 0.000 min
 Response: 198574252
 Conc: 56.69 ng/ml



#11 alpha-Chlordane

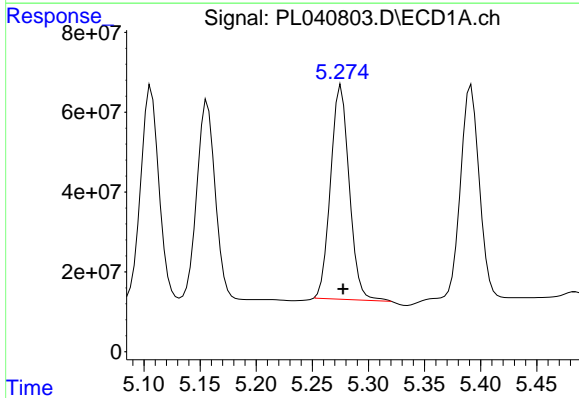
R.T.: 5.106 min
 Delta R.T.: -0.001 min
 Response: 605901271
 Conc: 48.75 ng/ml

Instrument :
 ECD_L
 ClientSampled :



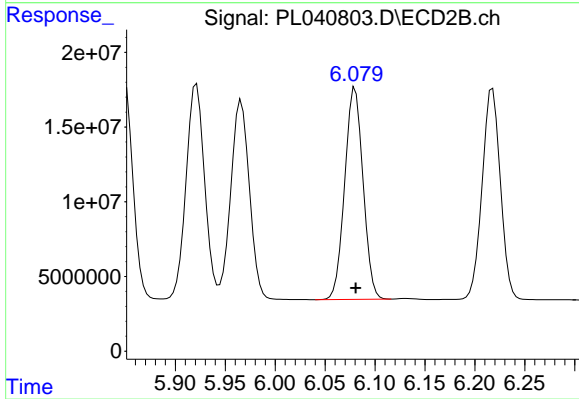
#11 alpha-Chlordane

R.T.: 5.921 min
 Delta R.T.: 0.000 min
 Response: 188427872
 Conc: 52.50 ng/ml



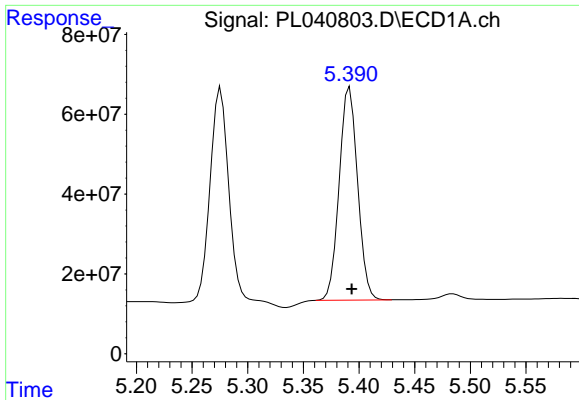
#12 4,4'-DDE

R.T.: 5.276 min
 Delta R.T.: -0.002 min
 Response: 620682936
 Conc: 48.60 ng/ml



#12 4,4'-DDE

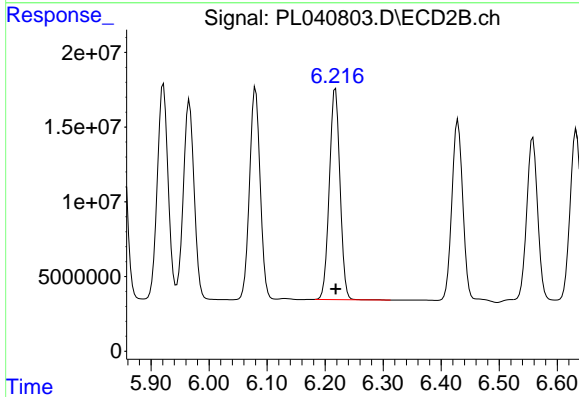
R.T.: 6.080 min
 Delta R.T.: 0.000 min
 Response: 181045250
 Conc: 50.38 ng/ml



#13 Dieldrin

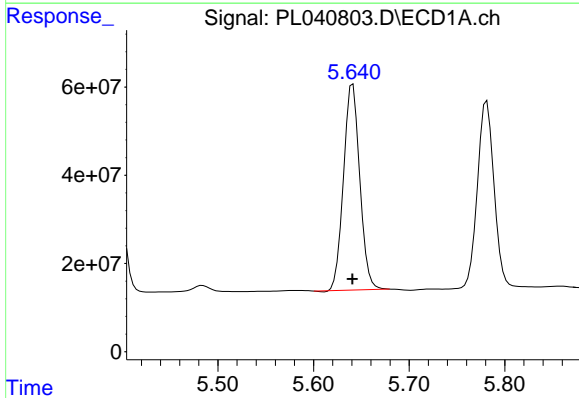
R.T.: 5.392 min
 Delta R.T.: -0.002 min
 Response: 615439415
 Conc: 48.18 ng/ml

Instrument :
 ECD_L
 ClientSampled :



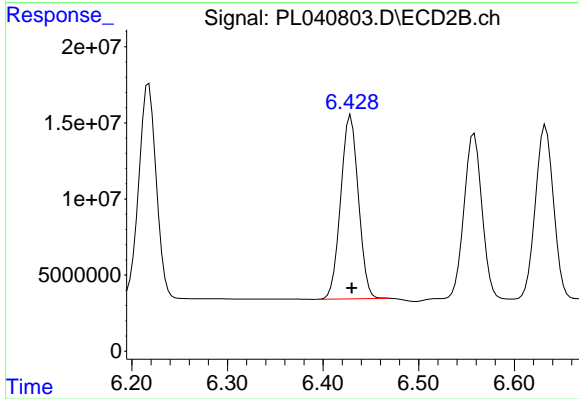
#13 Dieldrin

R.T.: 6.218 min
 Delta R.T.: 0.000 min
 Response: 179981488
 Conc: 50.38 ng/ml



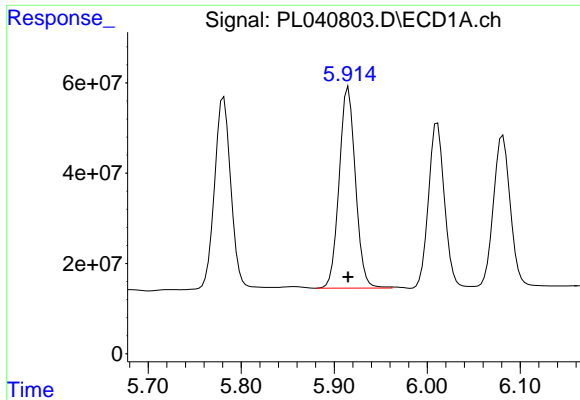
#14 Endrin

R.T.: 5.641 min
 Delta R.T.: 0.000 min
 Response: 554330977
 Conc: 45.98 ng/ml



#14 Endrin

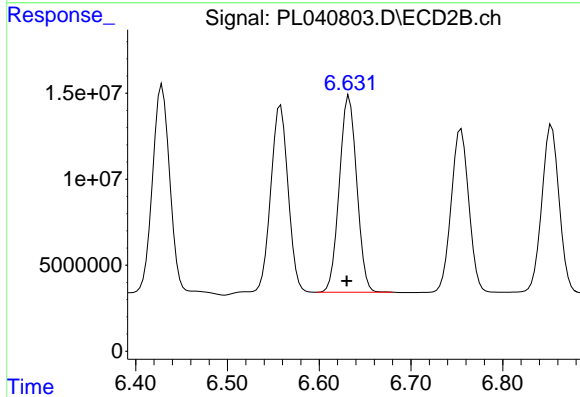
R.T.: 6.429 min
 Delta R.T.: -0.001 min
 Response: 155757396
 Conc: 48.66 ng/ml



#15 Endosulfan II

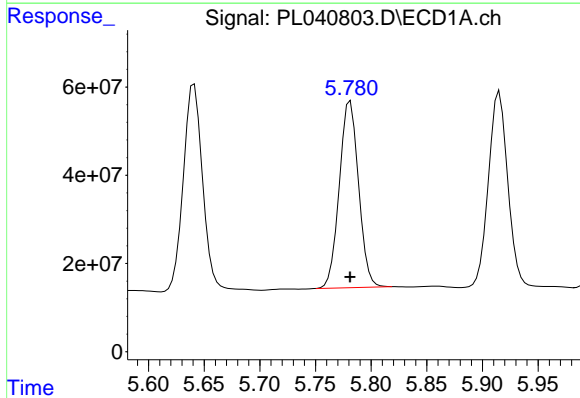
R.T.: 5.915 min
 Delta R.T.: 0.000 min
 Response: 541144366
 Conc: 47.08 ng/ml

Instrument :
 ECD_L
 ClientSampled :



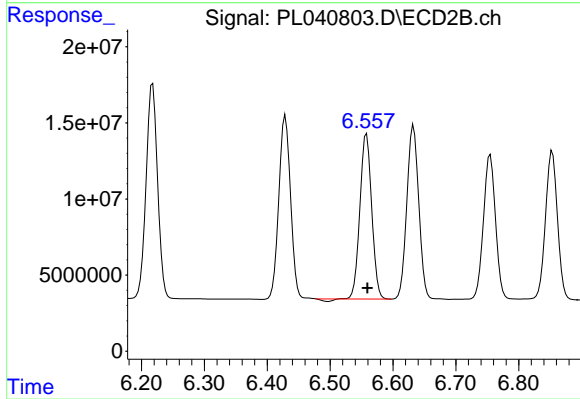
#15 Endosulfan II

R.T.: 6.633 min
 Delta R.T.: 0.003 min
 Response: 150389659
 Conc: 43.21 ng/ml



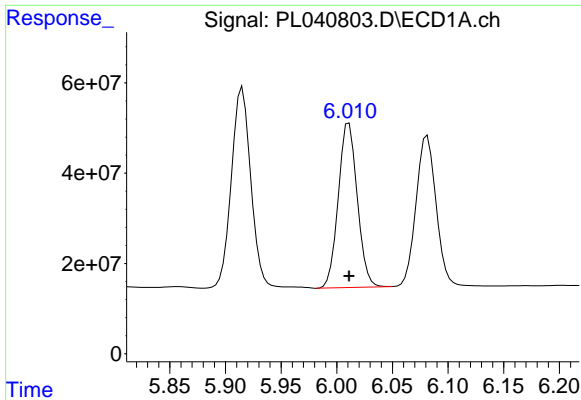
#16 4,4'-DDD

R.T.: 5.781 min
 Delta R.T.: 0.000 min
 Response: 510333062
 Conc: 53.11 ng/ml



#16 4,4'-DDD

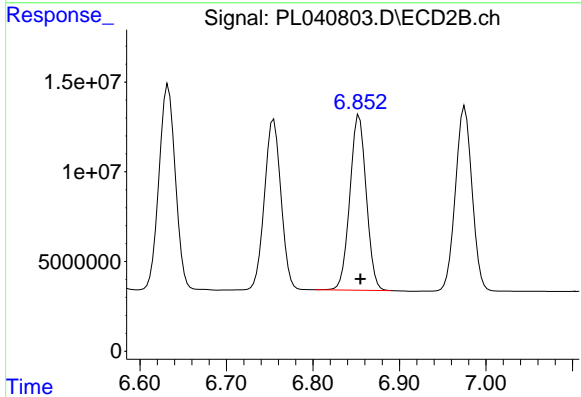
R.T.: 6.558 min
 Delta R.T.: -0.001 min
 Response: 141070872
 Conc: 51.23 ng/ml



#17 4,4'-DDT

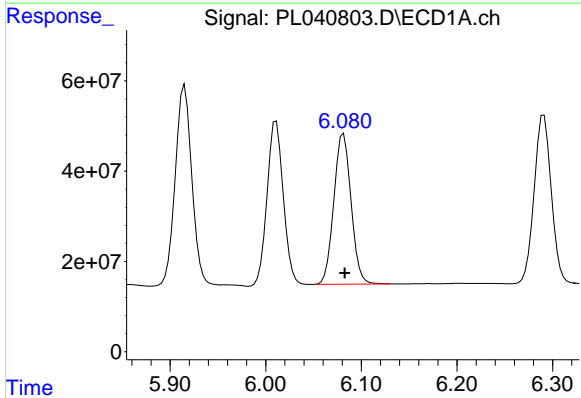
R.T.: 6.011 min
Delta R.T.: 0.000 min
Response: 432391293
Conc: 42.11 ng/ml

Instrument :
ECD_L
ClientSampled :



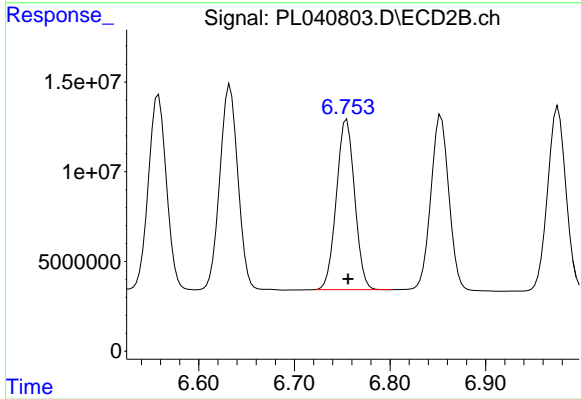
#17 4,4'-DDT

R.T.: 6.853 min
Delta R.T.: -0.001 min
Response: 128566330
Conc: 42.12 ng/ml



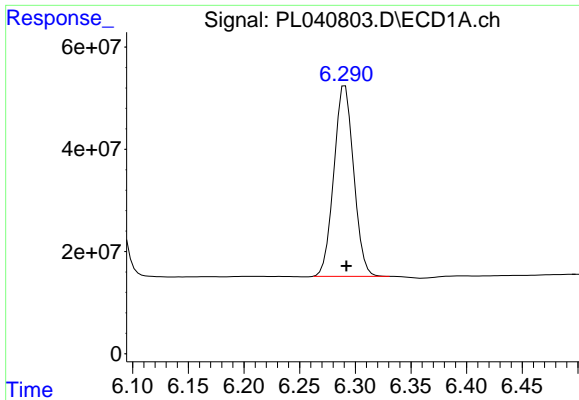
#18 Endrin aldehyde

R.T.: 6.081 min
Delta R.T.: -0.001 min
Response: 417799805
Conc: 43.41 ng/ml



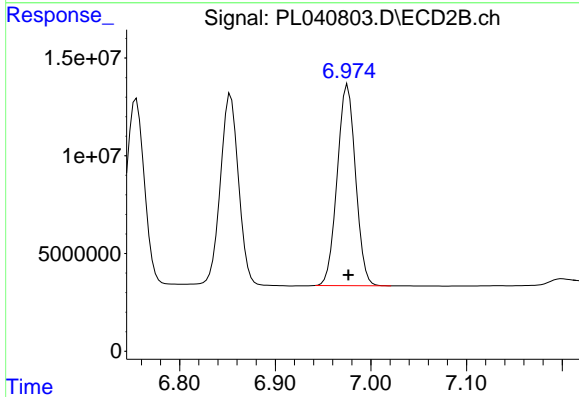
#18 Endrin aldehyde

R.T.: 6.755 min
Delta R.T.: -0.001 min
Response: 126155210
Conc: 47.13 ng/ml

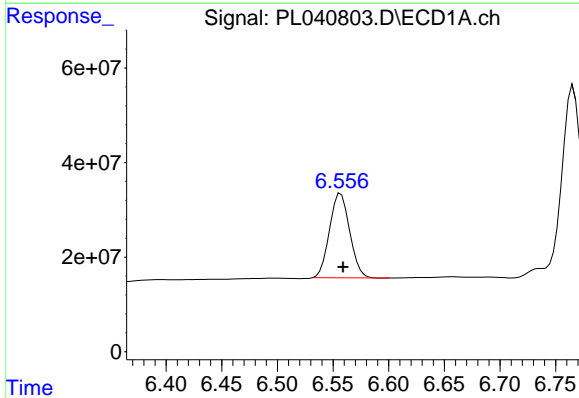


#19 Endosulfan Sulfate
R.T.: 6.291 min
Delta R.T.: -0.001 min
Response: 462228386
Conc: 42.54 ng/ml

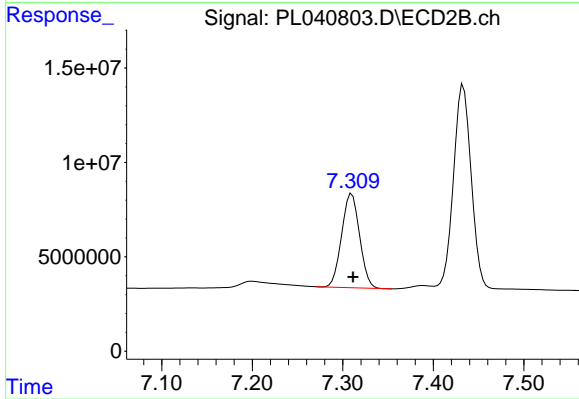
Instrument :
ECD_L
ClientSampleId :



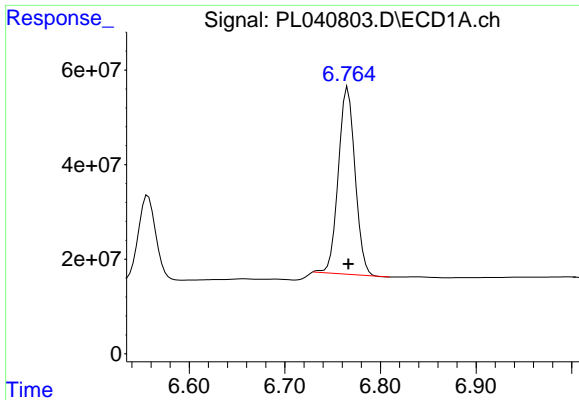
#19 Endosulfan Sulfate
R.T.: 6.976 min
Delta R.T.: 0.000 min
Response: 137220772
Conc: 47.02 ng/ml



#20 Methoxychlor
R.T.: 6.557 min
Delta R.T.: -0.002 min
Response: 224857008
Conc: 40.25 ng/ml



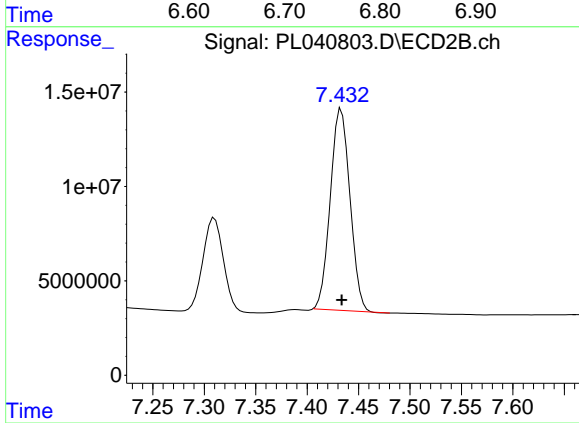
#20 Methoxychlor
R.T.: 7.310 min
Delta R.T.: -0.002 min
Response: 68713565
Conc: 43.15 ng/ml



#21 Endrin ketone

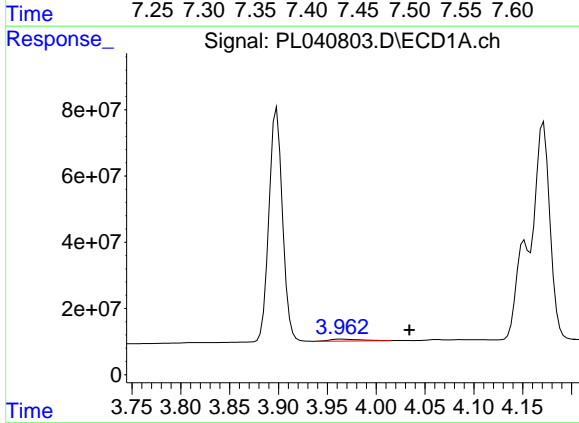
R.T.: 6.766 min
Delta R.T.: 0.000 min
Response: 479233579
Conc: 39.68 ng/ml

Instrument :
ECD_L
ClientSampleId :



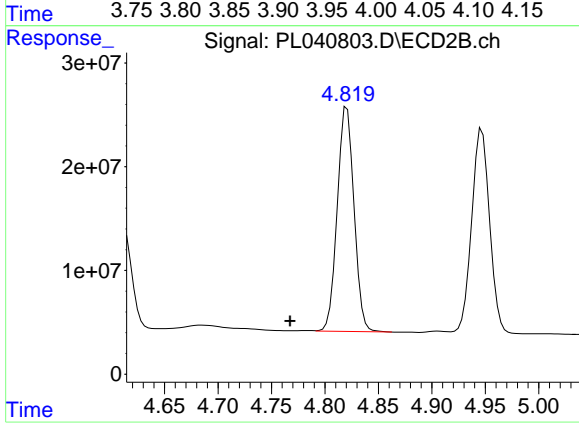
#21 Endrin ketone

R.T.: 7.433 min
Delta R.T.: 0.000 min
Response: 141789357
Conc: 46.44 ng/ml



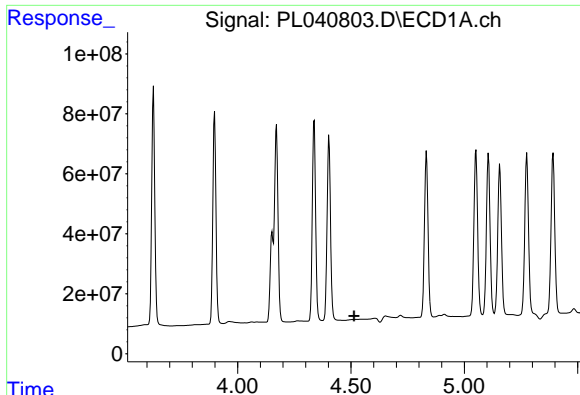
#23 Chlordane-1

R.T.: 3.964 min
Delta R.T.: -0.070 min
Response: 12874334
Conc: 30.54 ng/ml



#23 Chlordane-1

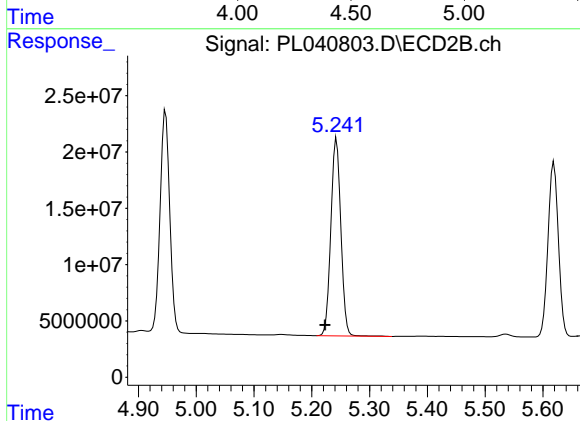
R.T.: 4.821 min
Delta R.T.: 0.053 min
Response: 236329633
Conc: 1634.38 ng/ml



#24 Chlordane-2

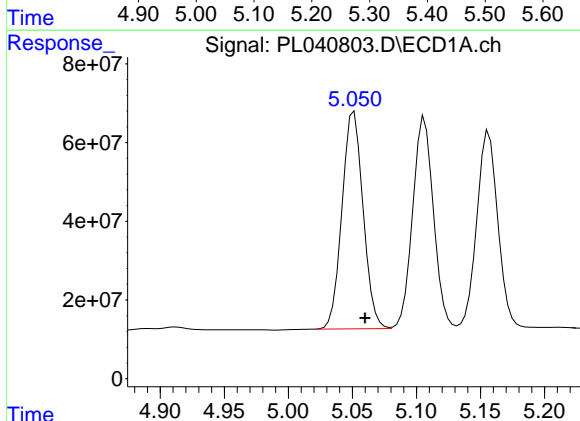
R.T.: 0.000 min
 Exp R.T.: 4.514 min
 Response: 0
 Conc: N.D.

Instrument :
 ECD_L
 ClientSampled :



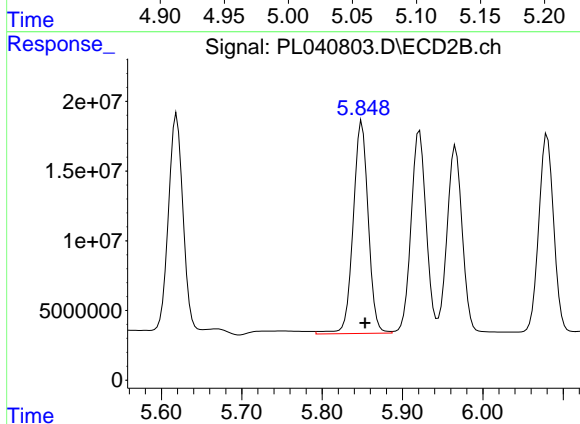
#24 Chlordane-2

R.T.: 5.243 min
 Delta R.T.: 0.020 min
 Response: 211670622
 Conc: 1397.82 ng/ml



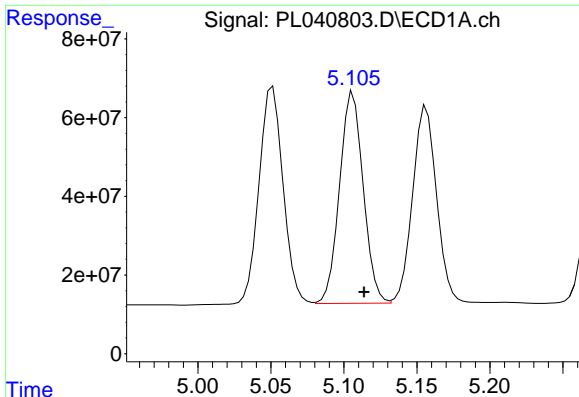
#25 Chlordane-3

R.T.: 5.051 min
 Delta R.T.: -0.009 min
 Response: 632905225
 Conc: 444.08 ng/ml



#25 Chlordane-3

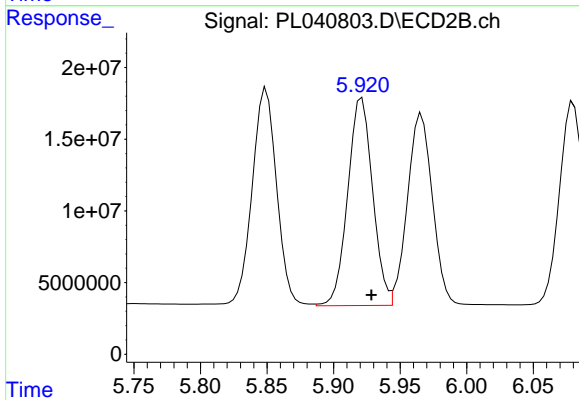
R.T.: 5.849 min
 Delta R.T.: -0.004 min
 Response: 198574252
 Conc: 405.99 ng/ml



#26 Chlordane-4

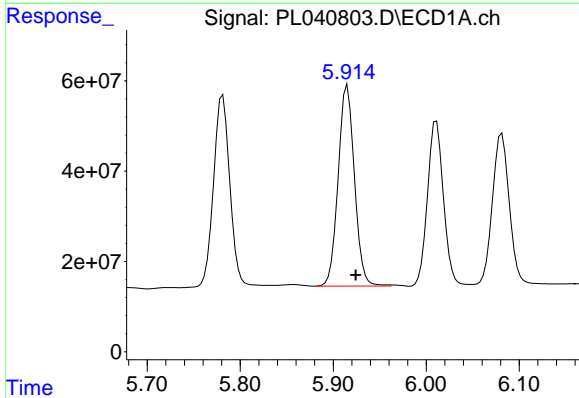
R.T.: 5.106 min
 Delta R.T.: -0.008 min
 Response: 605901271
 Conc: 439.64 ng/ml

Instrument :
 ECD_L
 ClientSampled :



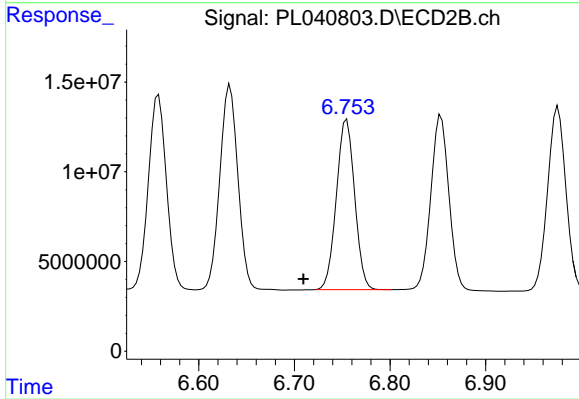
#26 Chlordane-4

R.T.: 5.921 min
 Delta R.T.: -0.007 min
 Response: 188427872
 Conc: 320.73 ng/ml



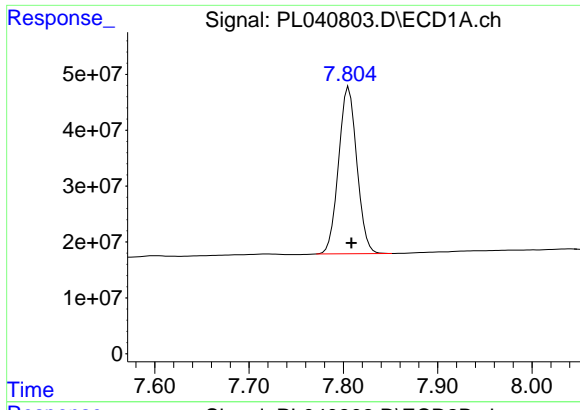
#27 Chlordane-5

R.T.: 5.915 min
 Delta R.T.: -0.009 min
 Response: 541144366
 Conc: 1191.02 ng/ml



#27 Chlordane-5

R.T.: 6.755 min
 Delta R.T.: 0.045 min
 Response: 126155210
 Conc: 1109.19 ng/ml



#28 Decachlorobiphenyl

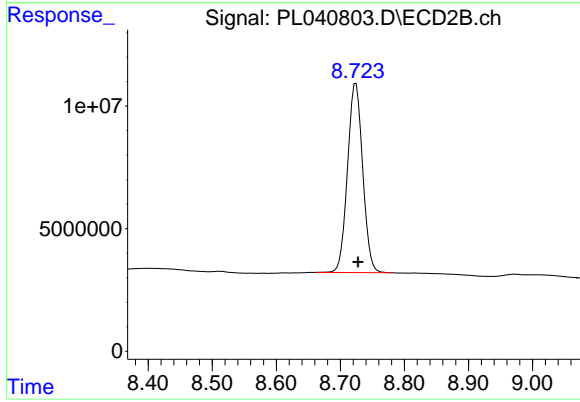
R.T.: 7.806 min

Delta R.T.: -0.003 min

Response: 402422897

Conc: 37.21 ng/ml

Instrument :
ECD_L
ClientSampleId :



#28 Decachlorobiphenyl

R.T.: 8.724 min

Delta R.T.: -0.003 min

Response: 126903689

Conc: 45.07 ng/ml