

Data Path : Z:\pestpcbsrv\HPCHEM1\ECD_L\Data\PL100819\
 Data File : PL053141.D
 Signal(s) : Signal #1: ECD1A.ch Signal #2: ECD2B.ch
 Acq On : 08 Oct 2019 11:50
 Operator : SG\AJ
 Sample : K5213-05
 Misc :
 ALS Vial : 7 Sample Multiplier: 1

Instrument :
 ECD_L
 ClientSampled :
 S-3(0-5)

Integration File signal 1: autoint1.e
 Integration File signal 2: autoint2.e
 Quant Time: Oct 09 00:39:11 2019
 Quant Method : Z:\pestpcbsrv\HPCHEM1\ECD_L\methods\PL092919.M
 Quant Title : GC Extractables
 QLast Update : Mon Sep 30 08:44:08 2019
 Response via : Initial Calibration
 Integrator: ChemStation

Volume Inj. : 1 µl
 Signal #1 Phase : ZB-MR2 Signal #2 Phase: ZB-MR1
 Signal #1 Info : 30M x 0.32mm x0.2 Signal #2 Info : 30M x 0.32mm x0.5µm

Compound	RT#1	RT#2	Resp#1	Resp#2	ng/ml	ng/ml
System Monitoring Compounds						
1) SA Tetrachlo...	3.552	4.048	63969248	18923824	6.431	7.047
2) SA Decachlor...	8.343	9.129	121.9E6	45757771	12.167	15.597 #
Target Compounds						
2) A alpha-BHC	0.000	4.468f	0	11831208	N.D.	3.081 #
5) MB Aldrin	4.844	5.525	39572504	31863411	2.877	9.194 #
7) B delta-BHC	0.000	5.109	0	2659303	N.D.	0.735 #
8) B Heptachlo...	0.000	5.917	0	59140471	N.D.	17.646 #
9) A Endosulfan I	5.650f	6.264f	31103133	4900670	2.563	1.568 #
10) B gamma-Chl...	5.535f	6.176f	138.1E6	40333428	10.269	11.922
11) B alpha-Chl...	5.560f	6.232	69803206	2560348	5.292	0.761 #
12) B 4,4'-DDE	0.000	6.391	0	51147028	N.D.	15.660 #
13) MA Dieldrin	5.867	6.532	412.9E6	25062094	31.986	7.683 #
14) MA Endrin	6.128	6.750	48795158	76137483	4.284	27.418 #
15) B Endosulfa...	6.392f	0.000	118.0E6	0	10.299	N.D. #
16) A 4,4'-DDD	0.000	6.886	0	75235764	N.D.	30.676 #
17) MA 4,4'-DDT	6.497	7.151f	458.4E6	110.6E6	44.883	42.493
18) B Endrin al...	6.593f	7.100	24610647	8347092	2.621	3.403 #
19) B Endosulfa...	6.788	7.283f	16347222	6931399	1.570	2.539 #
20) A Methoxychlor	7.032f	7.624	40097919	2112808	7.774	1.501 #
21) B Endrin ke...	7.308f	0.000	23499745	0	2.016	N.D. #
22) Mirex	0.000	8.265f	0	30287465	N.D.	13.466 #
23) Chlordane-1	0.000	5.048	0	6941580	N.D.	68.437 #
24) Chlordane-2	0.000	5.525	0	31863411	N.D.	284.692 #
25) Chlordane-3	5.535f	6.176f	138.1E6	40333428	119.181	92.612
26) Chlordane-4	5.560f	6.232	69803206	2560348	73.137	4.822 #
27) Chlordane-5	6.392f	7.059f	118.0E6	6753566	299.217	76.563 #

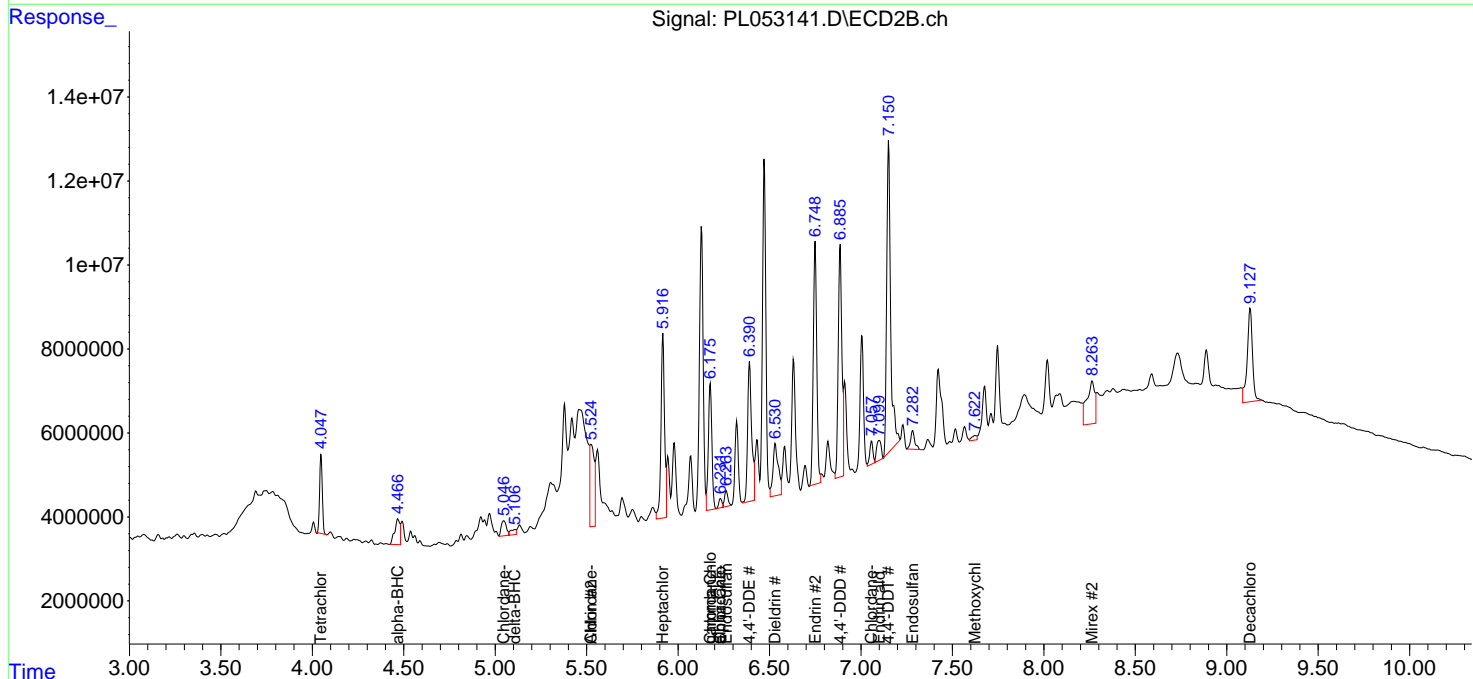
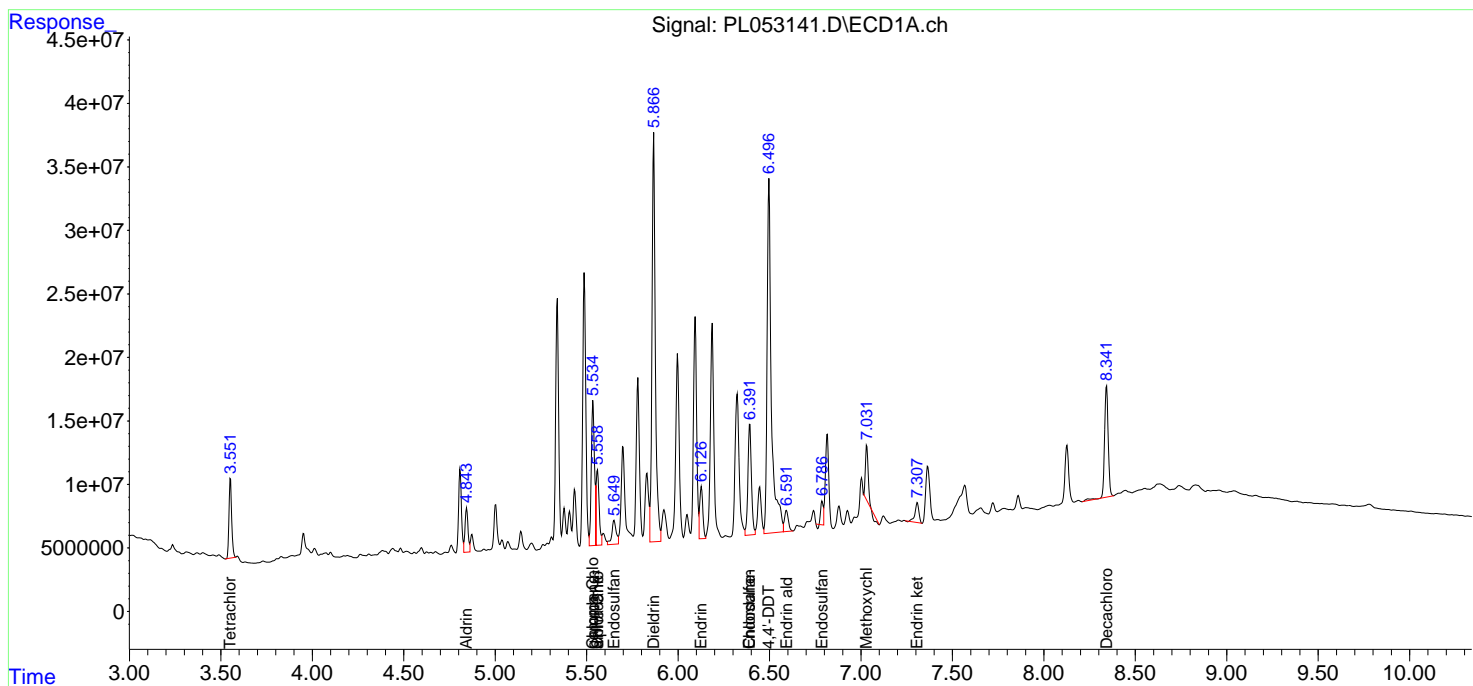
(f)=RT Delta > 1/2 Window (#)=Amounts differ by > 25% (m)=manual int.

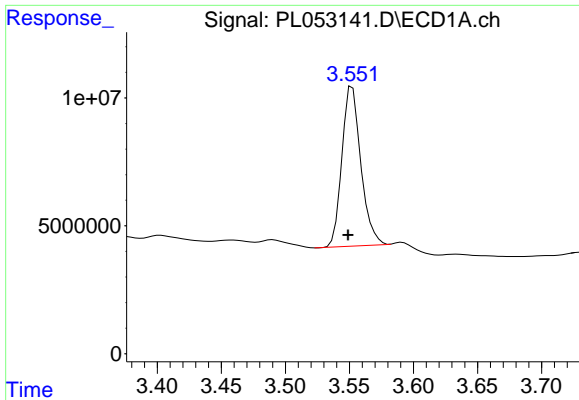
Data Path : Z:\pestpcbsrv\HPCHEM1\ECD_L\Data\PL100819\
 Data File : PL053141.D
 Signal(s) : Signal #1: ECD1A.ch Signal #2: ECD2B.ch
 Acq On : 08 Oct 2019 11:50
 Operator : SG\AJ
 Sample : K5213-05
 Misc :
 ALS Vial : 7 Sample Multiplier: 1

Instrument :
 ECD_L
 Client Sampled :
 S-3(0-5)

Integration File signal 1: autoint1.e
 Integration File signal 2: autoint2.e
 Quant Time: Oct 09 00:39:11 2019
 Quant Method : Z:\pestpcbsrv\HPCHEM1\ECD_L\methods\PL092919.M
 Quant Title : GC Extractables
 QLast Update : Mon Sep 30 08:44:08 2019
 Response via : Initial Calibration
 Integrator: ChemStation

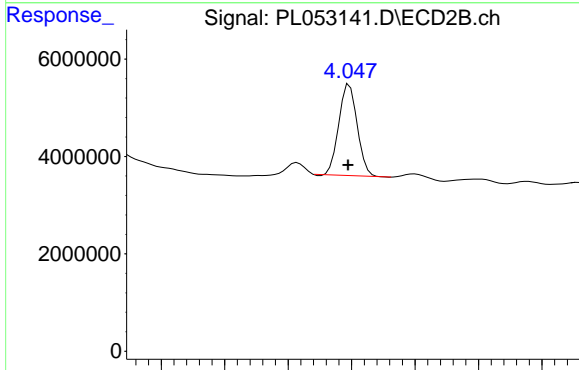
Volume Inj. : 1 µl
 Signal #1 Phase : ZB-MR2 Signal #2 Phase: ZB-MR1
 Signal #1 Info : 30M x 0.32mm x0.2 Signal #2 Info : 30M x 0.32mm x0.5µm



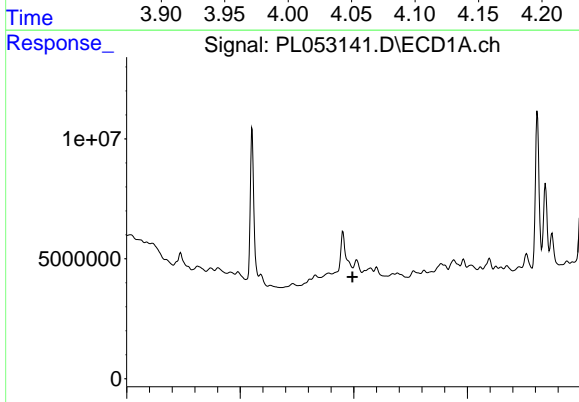


#1 Tetrachloro-m-xylene
 R.T.: 3.552 min
 Delta R.T.: 0.003 min
 Response: 63969248
 Conc: 6.43 ng/ml

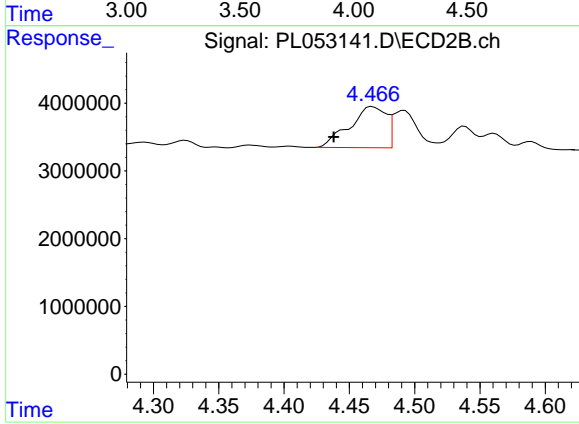
Instrument :
 ECD_L
 ClientSampleId :
 S-3(0-5)



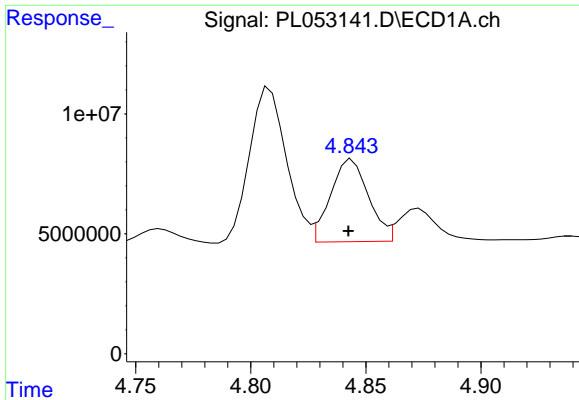
#1 Tetrachloro-m-xylene
 R.T.: 4.048 min
 Delta R.T.: 0.001 min
 Response: 18923824
 Conc: 7.05 ng/ml



#2 alpha-BHC
 R.T.: 0.000 min
 Exp R.T. : 3.994 min
 Response: 0
 Conc: N.D.

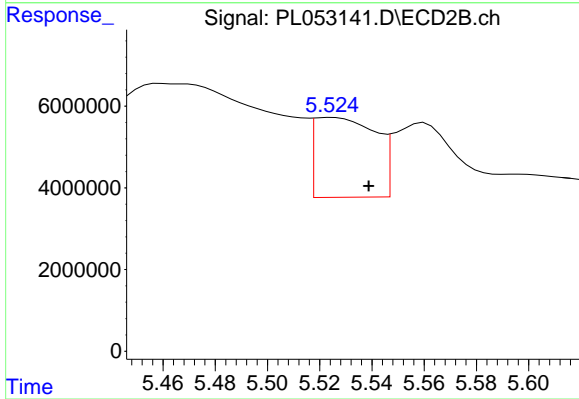


#2 alpha-BHC
 R.T.: 4.468 min
 Delta R.T.: 0.029 min
 Response: 11831208
 Conc: 3.08 ng/ml

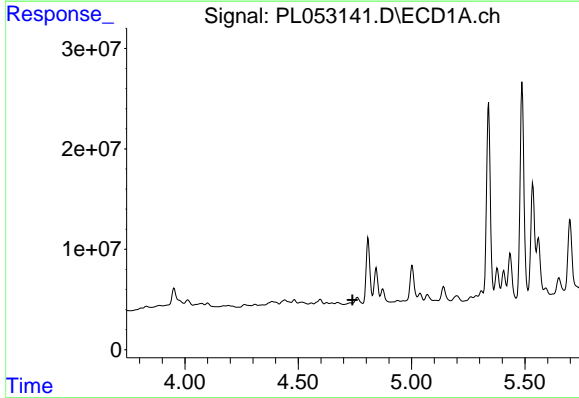


#5 Aldrin
 R.T.: 4.844 min
 Delta R.T.: 0.002 min
 Response: 39572504
 Conc: 2.88 ng/ml

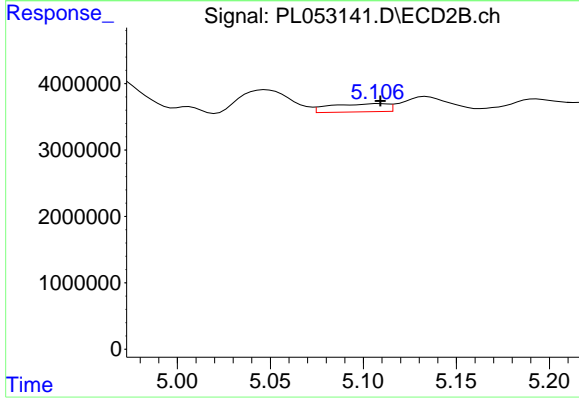
Instrument :
 ECD_L
 ClientSampled :
 S-3(0-5)



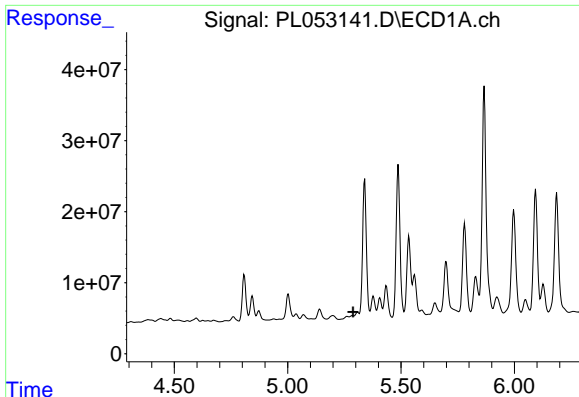
#5 Aldrin
 R.T.: 5.525 min
 Delta R.T.: -0.014 min
 Response: 31863411
 Conc: 9.19 ng/ml



#7 delta-BHC
 R.T.: 0.000 min
 Exp R.T. : 4.740 min
 Response: 0
 Conc: N.D.



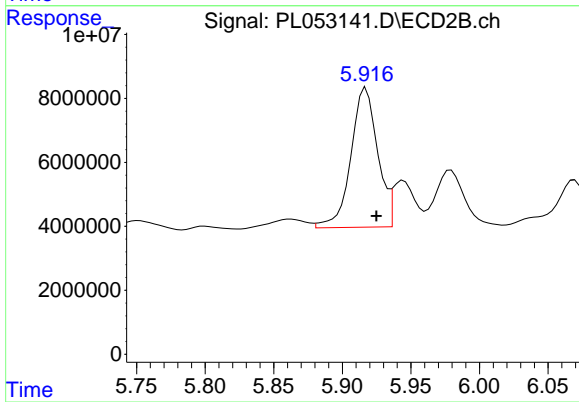
#7 delta-BHC
 R.T.: 5.109 min
 Delta R.T.: 0.000 min
 Response: 2659303
 Conc: 0.73 ng/ml



#8 Heptachlor epoxide

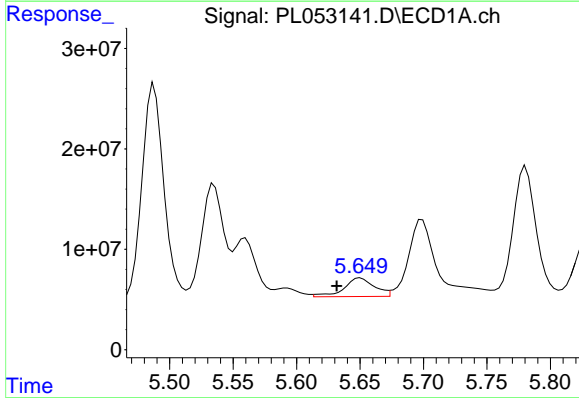
R.T.: 0.000 min
 Exp R.T.: 5.289 min
 Response: 0
 Conc: N.D.

Instrument :
 ECD_L
 ClientSampleId :
 S-3(0-5)



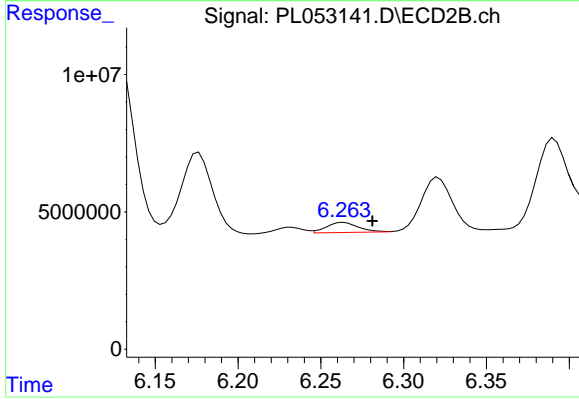
#8 Heptachlor epoxide

R.T.: 5.917 min
 Delta R.T.: -0.008 min
 Response: 59140471
 Conc: 17.65 ng/ml



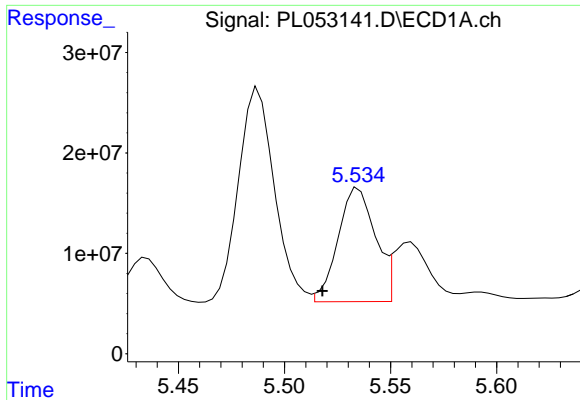
#9 Endosulfan I

R.T.: 5.650 min
 Delta R.T.: 0.019 min
 Response: 31103133
 Conc: 2.56 ng/ml



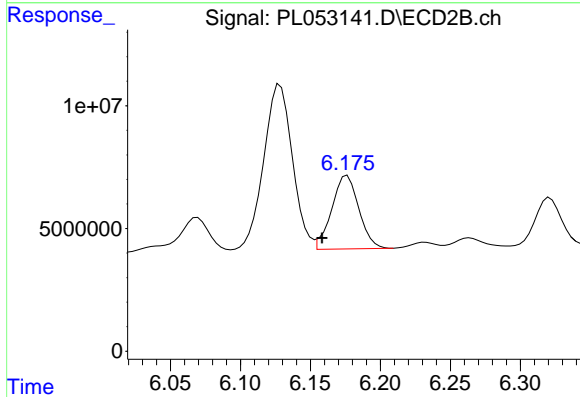
#9 Endosulfan I

R.T.: 6.264 min
 Delta R.T.: -0.017 min
 Response: 4900670
 Conc: 1.57 ng/ml

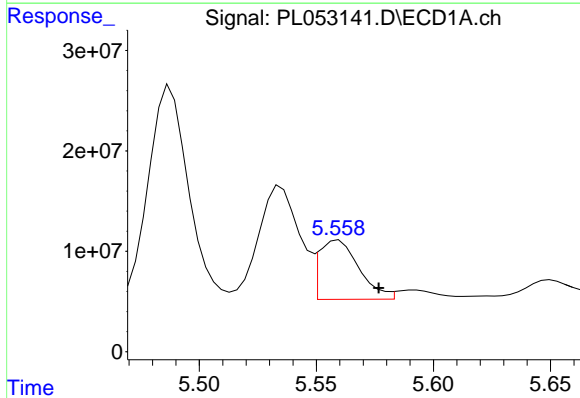


#10 gamma-Chlordane
 R.T.: 5.535 min
 Delta R.T.: 0.017 min
 Response: 138094833
 Conc: 10.27 ng/ml

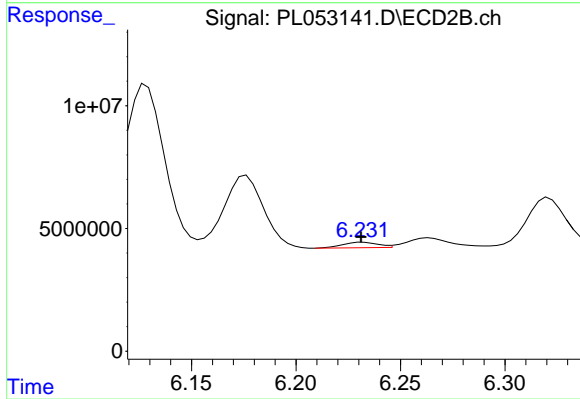
Instrument :
 ECD_L
 ClientSampleId :
 S-3(0-5)



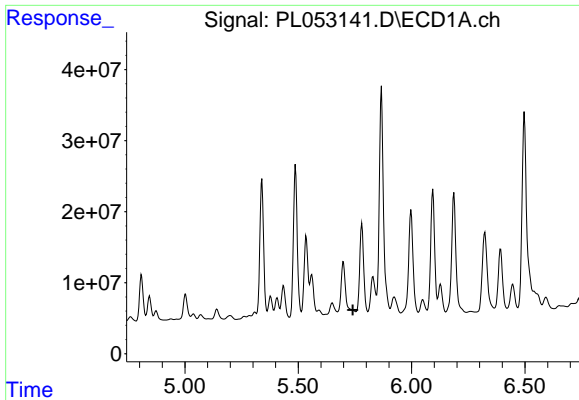
#10 gamma-Chlordane
 R.T.: 6.176 min
 Delta R.T.: 0.018 min
 Response: 40333428
 Conc: 11.92 ng/ml



#11 alpha-Chlordane
 R.T.: 5.560 min
 Delta R.T.: -0.017 min
 Response: 69803206
 Conc: 5.29 ng/ml



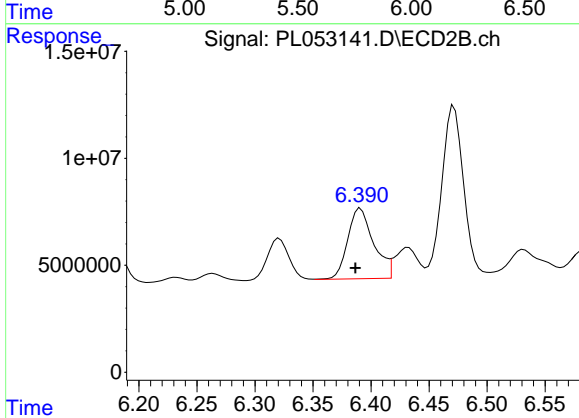
#11 alpha-Chlordane
 R.T.: 6.232 min
 Delta R.T.: 0.000 min
 Response: 2560348
 Conc: 0.76 ng/ml



#12 4,4'-DDE

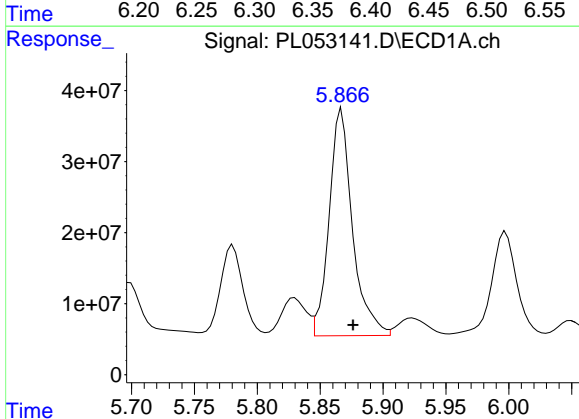
R.T.: 0.000 min
 Exp R.T.: 5.740 min
 Response: 0
 Conc: N.D.

Instrument :
 ECD_L
 ClientSampled :
 S-3(0-5)



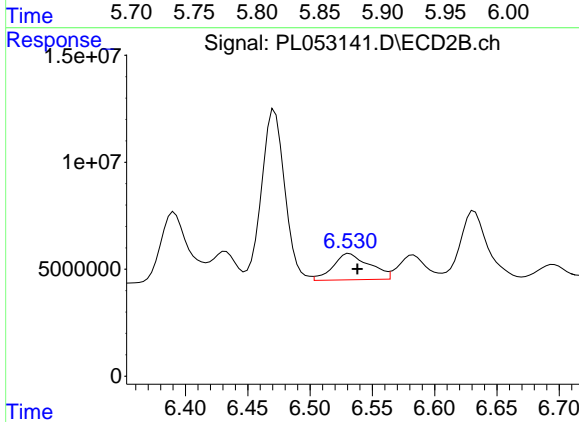
#12 4,4'-DDE

R.T.: 6.391 min
 Delta R.T.: 0.005 min
 Response: 51147028
 Conc: 15.66 ng/ml



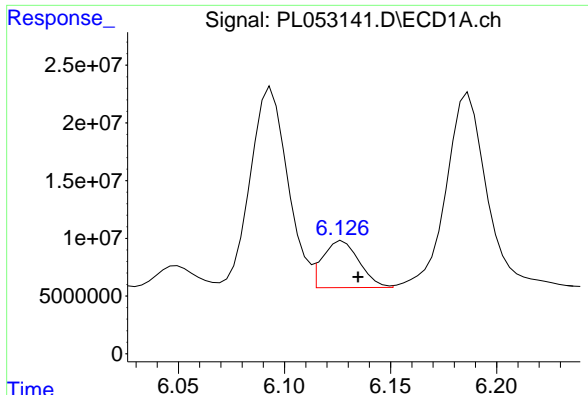
#13 Dieldrin

R.T.: 5.867 min
 Delta R.T.: -0.009 min
 Response: 412874921
 Conc: 31.99 ng/ml



#13 Dieldrin

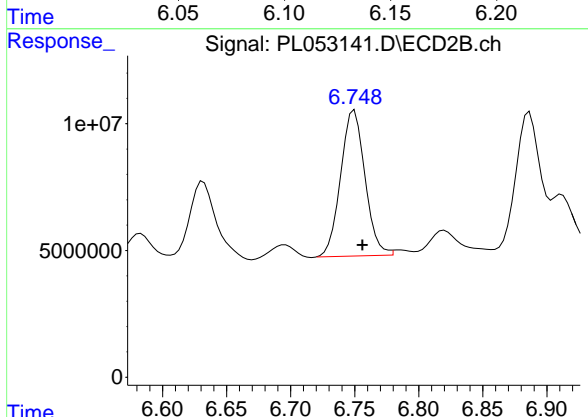
R.T.: 6.532 min
 Delta R.T.: -0.006 min
 Response: 25062094
 Conc: 7.68 ng/ml



#14 Endrin

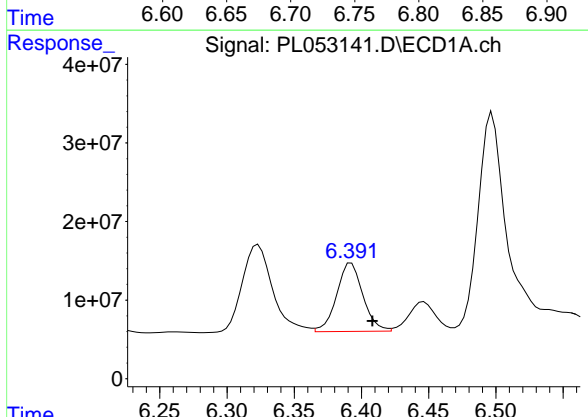
R.T.: 6.128 min
 Delta R.T.: -0.007 min
 Response: 48795158
 Conc: 4.28 ng/ml

Instrument :
 ECD_L
 ClientSampled :
 S-3(0-5)



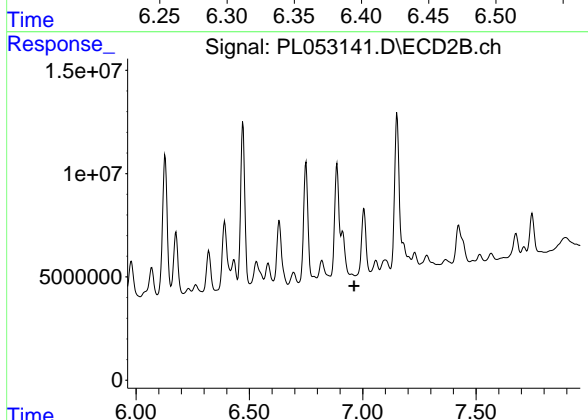
#14 Endrin

R.T.: 6.750 min
 Delta R.T.: -0.006 min
 Response: 76137483
 Conc: 27.42 ng/ml



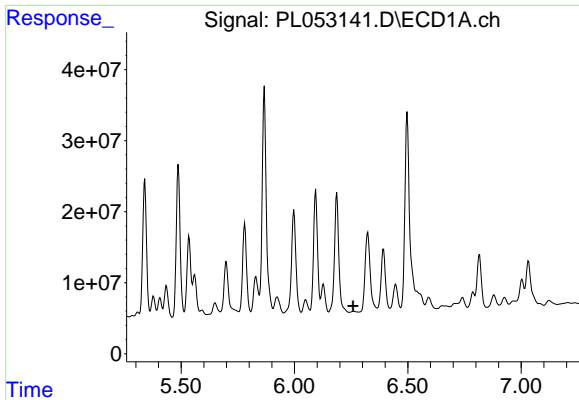
#15 Endosulfan II

R.T.: 6.392 min
 Delta R.T.: -0.016 min
 Response: 118021497
 Conc: 10.30 ng/ml



#15 Endosulfan II

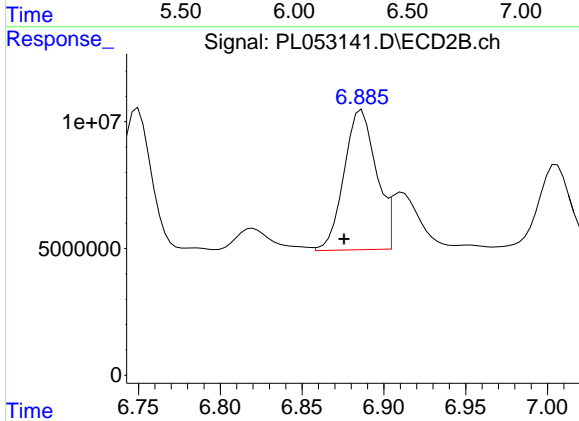
R.T.: 0.000 min
 Exp R.T. : 6.963 min
 Response: 0
 Conc: N.D.



#16 4,4'-DDD

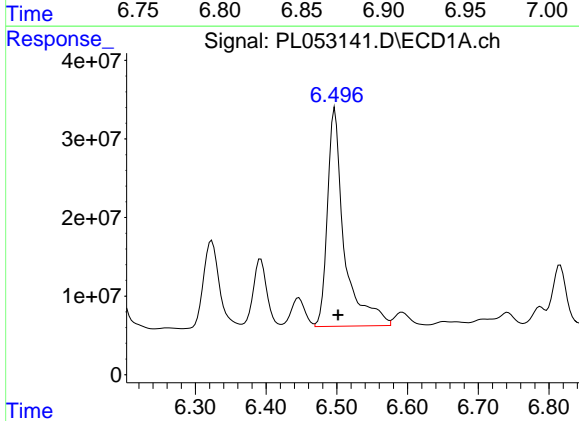
R.T.: 0.000 min
 Exp R.T.: 6.258 min
 Response: 0
 Conc: N.D.

Instrument :
 ECD_L
 ClientSampleId :
 S-3(0-5)



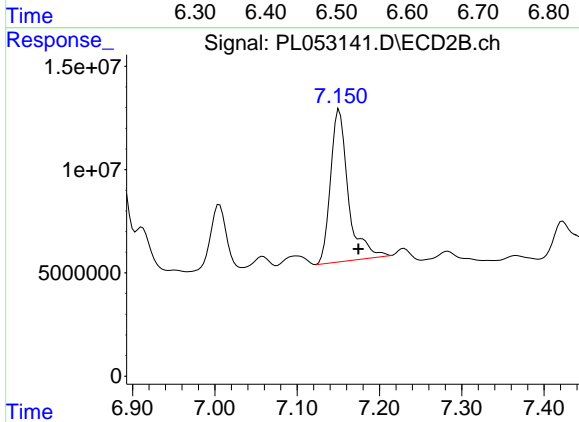
#16 4,4'-DDD

R.T.: 6.886 min
 Delta R.T.: 0.011 min
 Response: 75235764
 Conc: 30.68 ng/ml



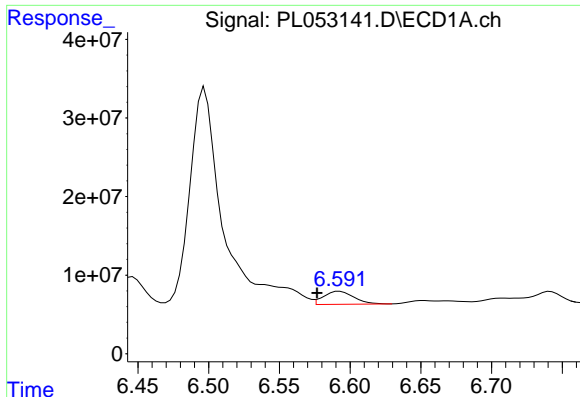
#17 4,4'-DDT

R.T.: 6.497 min
 Delta R.T.: -0.004 min
 Response: 458365892
 Conc: 44.88 ng/ml



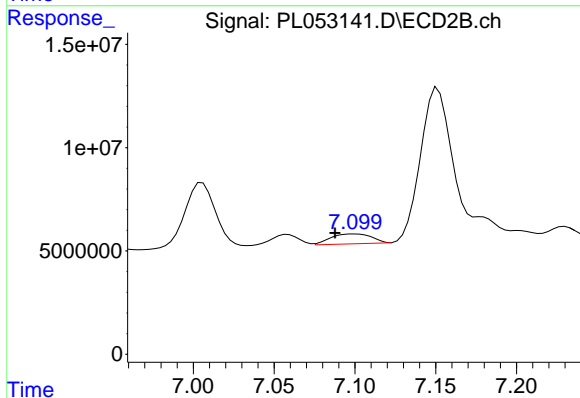
#17 4,4'-DDT

R.T.: 7.151 min
 Delta R.T.: -0.023 min
 Response: 110589517
 Conc: 42.49 ng/ml

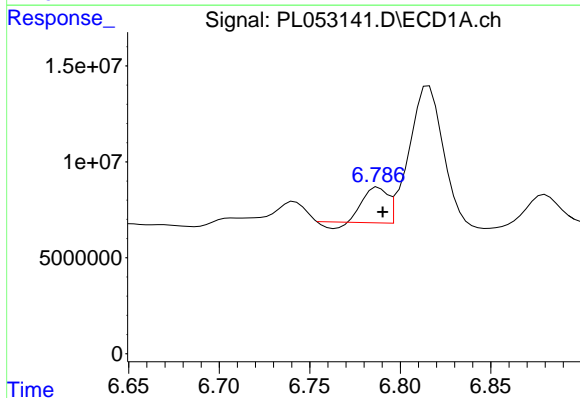


#18 Endrin aldehyde
 R.T.: 6.593 min
 Delta R.T.: 0.016 min
 Response: 24610647
 Conc: 2.62 ng/ml

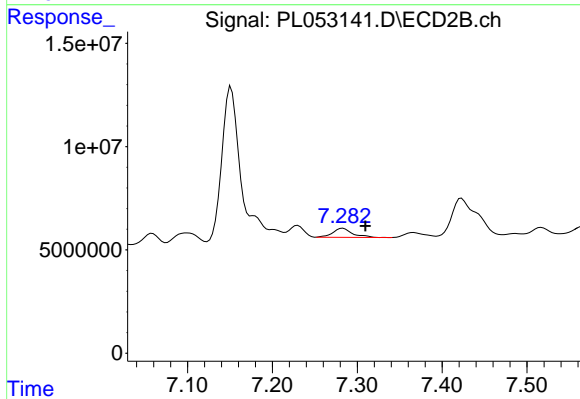
Instrument :
 ECD_L
 ClientSampled :
 S-3(0-5)



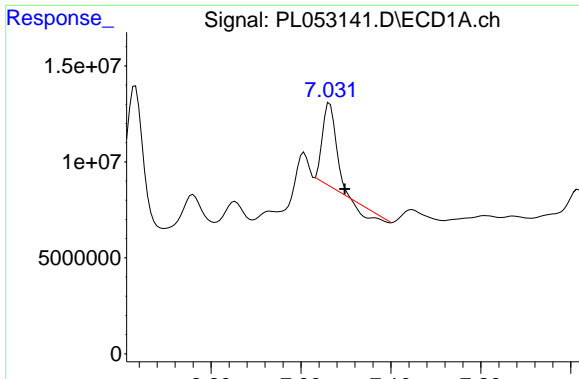
#18 Endrin aldehyde
 R.T.: 7.100 min
 Delta R.T.: 0.012 min
 Response: 8347092
 Conc: 3.40 ng/ml



#19 Endosulfan Sulfate
 R.T.: 6.788 min
 Delta R.T.: -0.003 min
 Response: 16347222
 Conc: 1.57 ng/ml



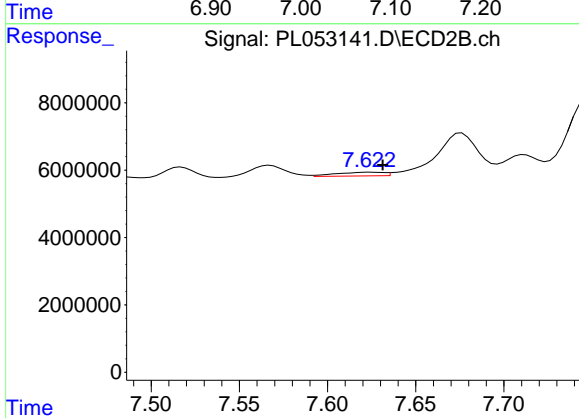
#19 Endosulfan Sulfate
 R.T.: 7.283 min
 Delta R.T.: -0.027 min
 Response: 6931399
 Conc: 2.54 ng/ml



#20 Methoxychlor

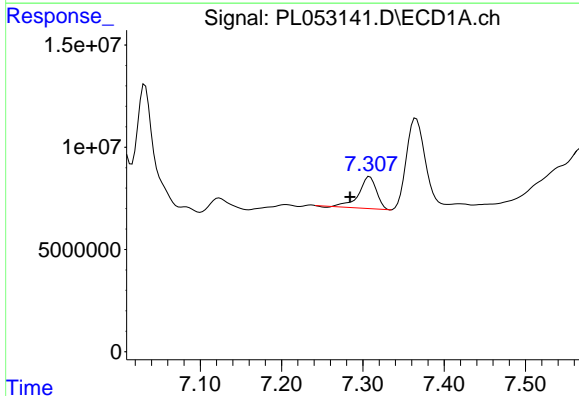
R.T.: 7.032 min
 Delta R.T.: -0.017 min
 Response: 40097919
 Conc: 7.77 ng/ml

Instrument :
 ECD_L
 ClientSampleId :
 S-3(0-5)



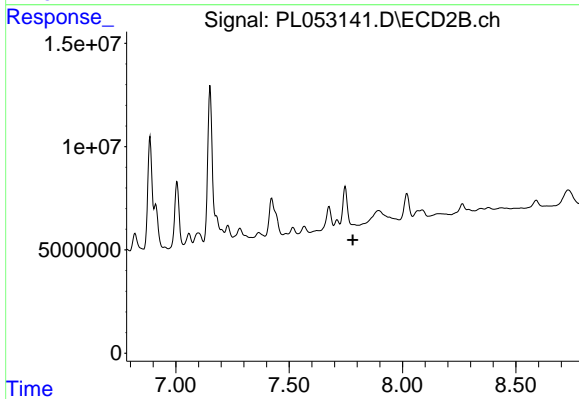
#20 Methoxychlor

R.T.: 7.624 min
 Delta R.T.: -0.008 min
 Response: 2112808
 Conc: 1.50 ng/ml



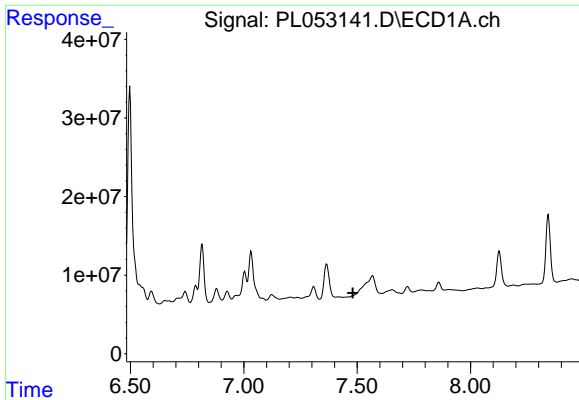
#21 Endrin ketone

R.T.: 7.308 min
 Delta R.T.: 0.024 min
 Response: 23499745
 Conc: 2.02 ng/ml



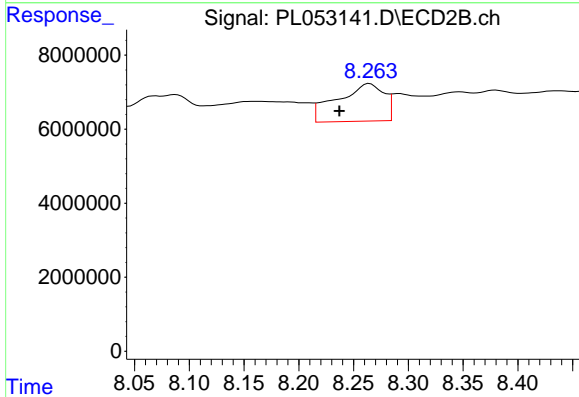
#21 Endrin ketone

R.T.: 0.000 min
 Exp R.T.: 7.781 min
 Response: 0
 Conc: N.D.

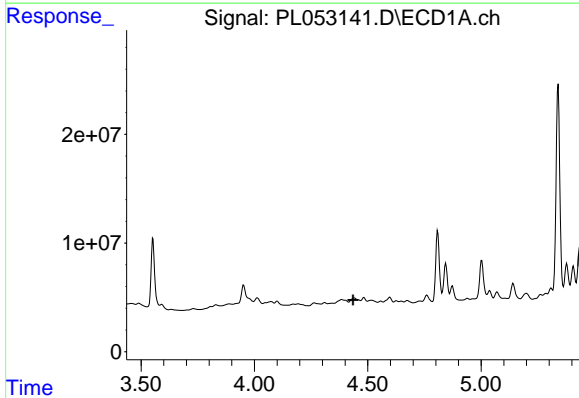


#22 Mirex
 R.T.: 0.000 min
 Exp R.T. : 7.481 min
 Response: 0
 Conc: N.D.

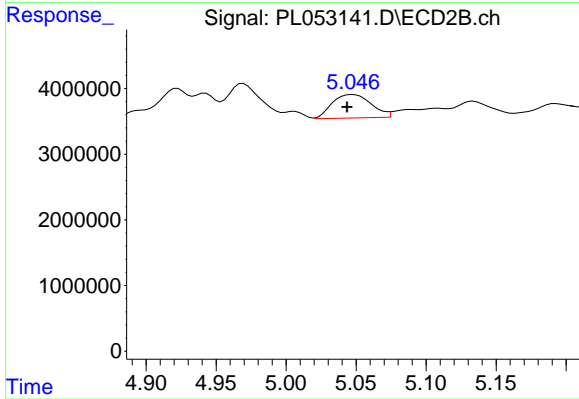
Instrument :
 ECD_L
 ClientSampleId :
 S-3(0-5)



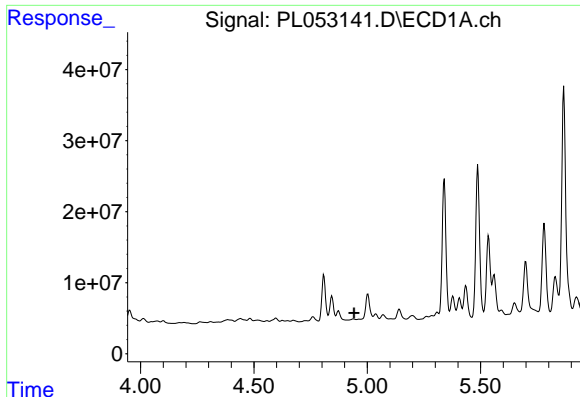
#22 Mirex
 R.T.: 8.265 min
 Delta R.T.: 0.028 min
 Response: 30287465
 Conc: 13.47 ng/ml



#23 Chlordane-1
 R.T.: 0.000 min
 Exp R.T. : 4.435 min
 Response: 0
 Conc: N.D.



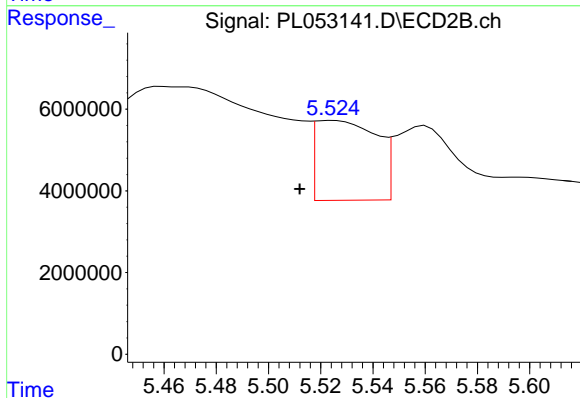
#23 Chlordane-1
 R.T.: 5.048 min
 Delta R.T.: 0.004 min
 Response: 6941580
 Conc: 68.44 ng/ml



#24 Chlordane-2

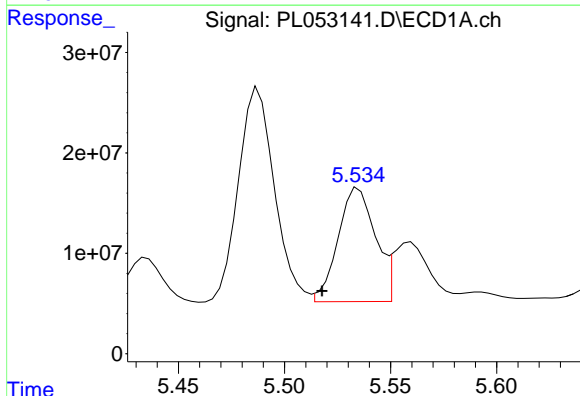
R.T.: 0.000 min
Exp R.T.: 4.942 min
Response: 0
Conc: N.D.

Instrument :
ECD_L
ClientSampleId :
S-3(0-5)



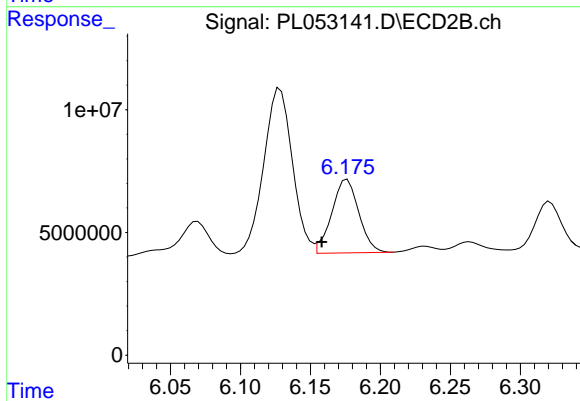
#24 Chlordane-2

R.T.: 5.525 min
Delta R.T.: 0.013 min
Response: 31863411
Conc: 284.69 ng/ml



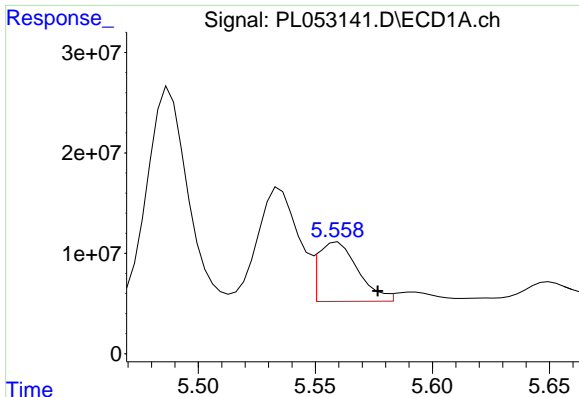
#25 Chlordane-3

R.T.: 5.535 min
Delta R.T.: 0.017 min
Response: 138094833
Conc: 119.18 ng/ml



#25 Chlordane-3

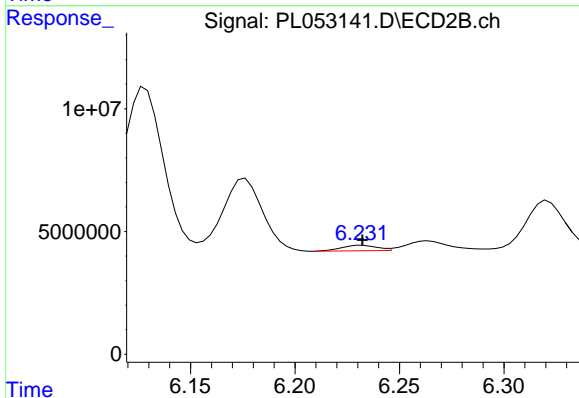
R.T.: 6.176 min
Delta R.T.: 0.018 min
Response: 40333428
Conc: 92.61 ng/ml



#26 Chlordane-4

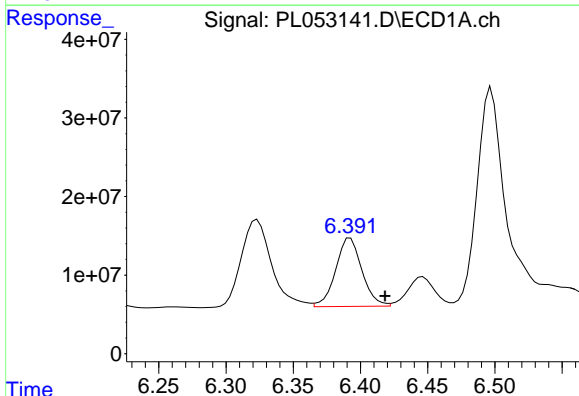
R.T.: 5.560 min
 Delta R.T.: -0.017 min
 Response: 69803206
 Conc: 73.14 ng/ml

Instrument :
 ECD_L
 ClientSampled :
 S-3(0-5)



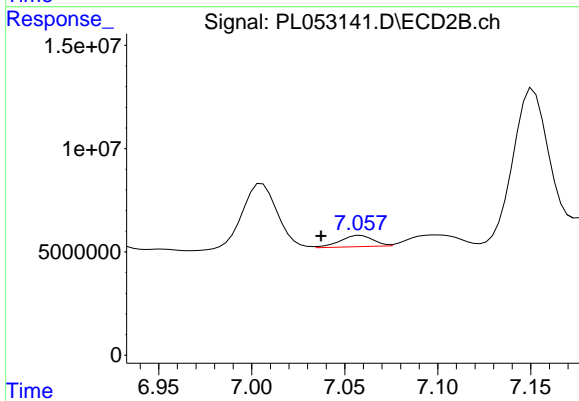
#26 Chlordane-4

R.T.: 6.232 min
 Delta R.T.: 0.000 min
 Response: 2560348
 Conc: 4.82 ng/ml



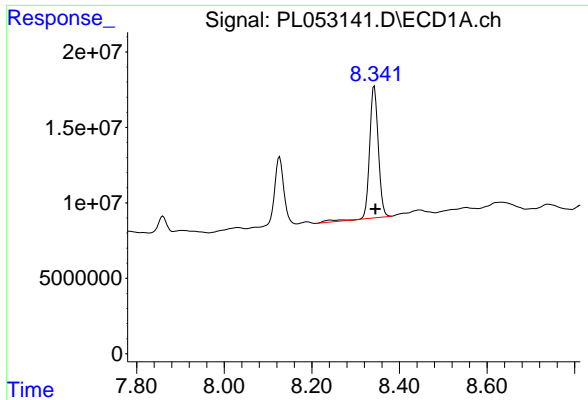
#27 Chlordane-5

R.T.: 6.392 min
 Delta R.T.: -0.026 min
 Response: 118021497
 Conc: 299.22 ng/ml



#27 Chlordane-5

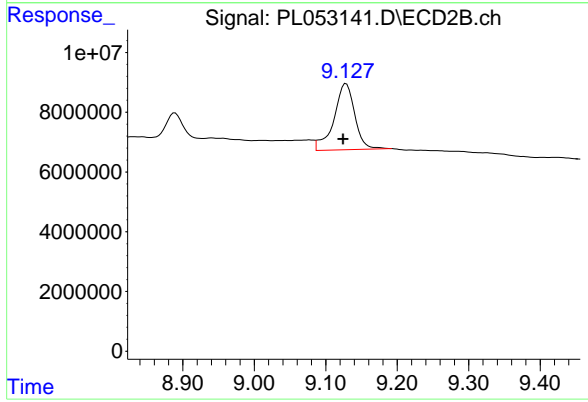
R.T.: 7.059 min
 Delta R.T.: 0.021 min
 Response: 6753566
 Conc: 76.56 ng/ml



#28 Decachlorobiphenyl

R.T.: 8.343 min
Delta R.T.: -0.002 min
Response: 121868921
Conc: 12.17 ng/ml

Instrument :
ECD_L
ClientSampleId :
S-3(0-5)



#28 Decachlorobiphenyl

R.T.: 9.129 min
Delta R.T.: 0.004 min
Response: 45757771
Conc: 15.60 ng/ml