

Data Path : Z:\pestpcbsrv\HPCHEM1\ECD_L\Data\PL100819\
 Data File : PL053142.D
 Signal(s) : Signal #1: ECD1A.ch Signal #2: ECD2B.ch
 Acq On : 08 Oct 2019 12:23
 Operator : SG\AJ
 Sample : K5213-0MS
 Misc :
 ALS Vial : 8 Sample Multiplier: 1

Instrument :
 ECD_L
 ClientSampleId :

Integration File signal 1: autoint1.e
 Integration File signal 2: autoint2.e
 Quant Time: Oct 09 00:39:25 2019
 Quant Method : Z:\pestpcbsrv\HPCHEM1\ECD_L\methods\PL092919.M
 Quant Title : GC Extractables
 QLast Update : Mon Sep 30 08:44:08 2019
 Response via : Initial Calibration
 Integrator: ChemStation

Volume Inj. : 1 µl
 Signal #1 Phase : ZB-MR2 Signal #2 Phase: ZB-MR1
 Signal #1 Info : 30M x 0.32mm x0.2 Signal #2 Info : 30M x 0.32mm x0.5µm

	Compound	RT#1	RT#2	Resp#1	Resp#2	ng/ml	ng/ml

System Monitoring Compounds							
1)	SA Tetrachlo...	3.549	4.048	161.5E6	46215261	16.239	17.211
28)	SA Decachlor...	8.341	9.128	124.7E6	41288682	12.455	14.074
Target Compounds							
2)	A alpha-BHC	3.994	4.439	438.3E6	102.5E6	27.477	26.684
3)	MA gamma-BHC...	4.280	4.724	397.3E6	98786709	27.277	27.280
4)	MA Heptachlor	4.589	5.234	417.5E6	102.6E6	27.944	26.920
5)	MB Aldrin	4.841	5.540	428.4E6	115.7E6	31.144	33.390
6)	B beta-BHC	4.531	4.894	173.5E6	48955306	27.950	31.146
7)	B delta-BHC	4.740	5.111	412.2E6	75720994	28.767	20.918 #
8)	B Heptachlo...	5.286	5.924	468.6E6	129.2E6	35.960	38.550
9)	A Endosulfan I	5.629	6.282	331.8E6	91425321	27.342	29.249
10)	B gamma-Chl...	5.515	6.160	431.7E6	96116992	32.099	28.411
11)	B alpha-Chl...	5.574	6.233	373.3E6	86560798	28.302	25.717
12)	B 4,4'-DDE	5.739	6.392	651.4E6	190.4E6	56.121	58.287
13)	MA Dieldrin	5.874	6.538	593.8E6	141.1E6	46.003	43.271
14)	MA Endrin	6.131	6.756	376.8E6	59519485	33.080	21.434 #
15)	B Endosulfa...	6.405	6.965	403.6E6	88745915	35.216	29.911
16)	A 4,4'-DDD	6.255	6.881	253.4E6	409.5E6	28.195	166.968 #
17)	MA 4,4'-DDT	6.493	7.178	1167.1E6	32450623	114.287	12.469 #
18)	B Endrin al...	6.596f	7.092	990.9E6	81368028	105.517	33.175 #
19)	B Endosulfa...	6.786	7.313	437.7E6	50416110	42.054	18.465 #
20)	A Methoxychlor	7.030f	7.633	227.7E6	37643711	44.149	26.737 #
21)	B Endrin ke...	7.282	7.784	292.3E6	96709899	25.083	33.899 #
22)	Mirex	7.476	8.239	253.4E6	159.8E6	26.834	71.027 #
24)	Chlordane-2	0.000	5.540f	0	115.7E6	N.D.	1033.920 #
25)	Chlordane-3	5.515	6.160	431.7E6	96116992	372.547	220.700 #
26)	Chlordane-4	5.574	6.233	373.3E6	86560798	391.119	163.016 #
27)	Chlordane-5	6.405	7.027	403.6E6	25448325	1023.127	288.499 #

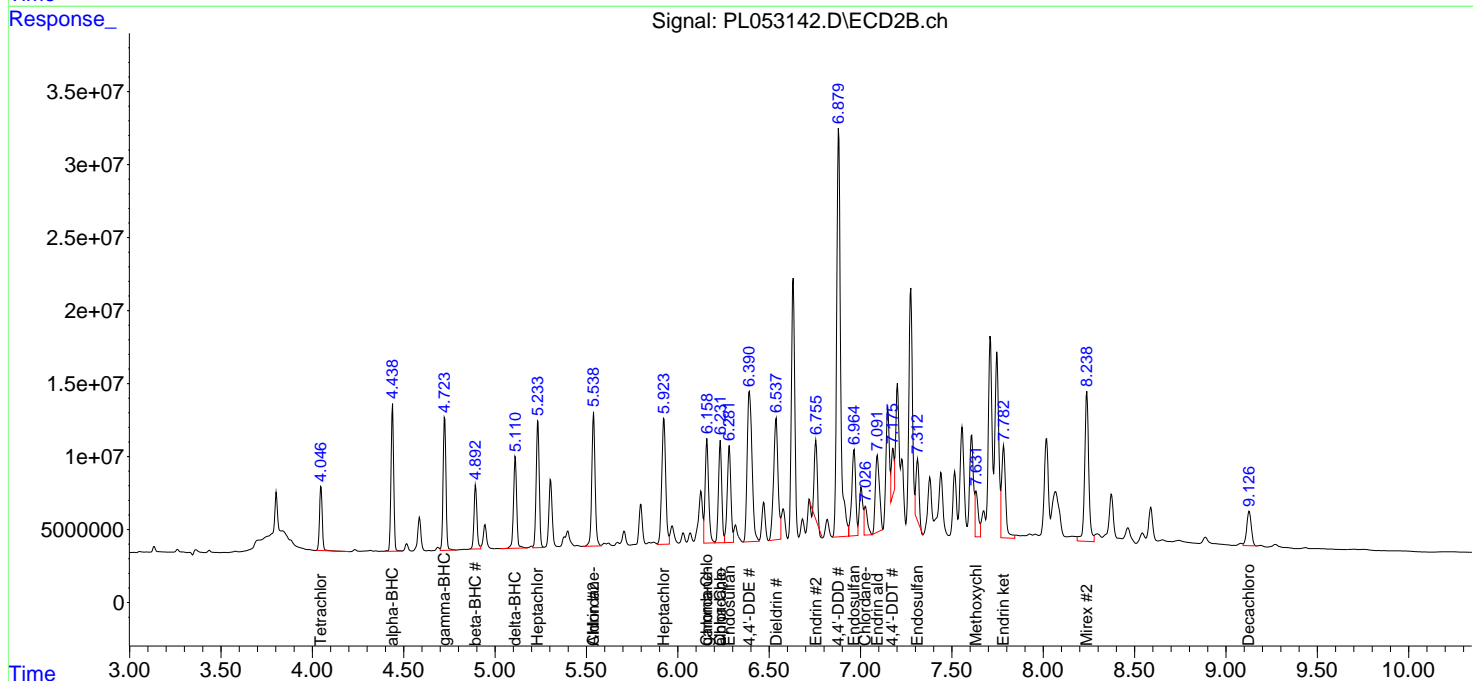
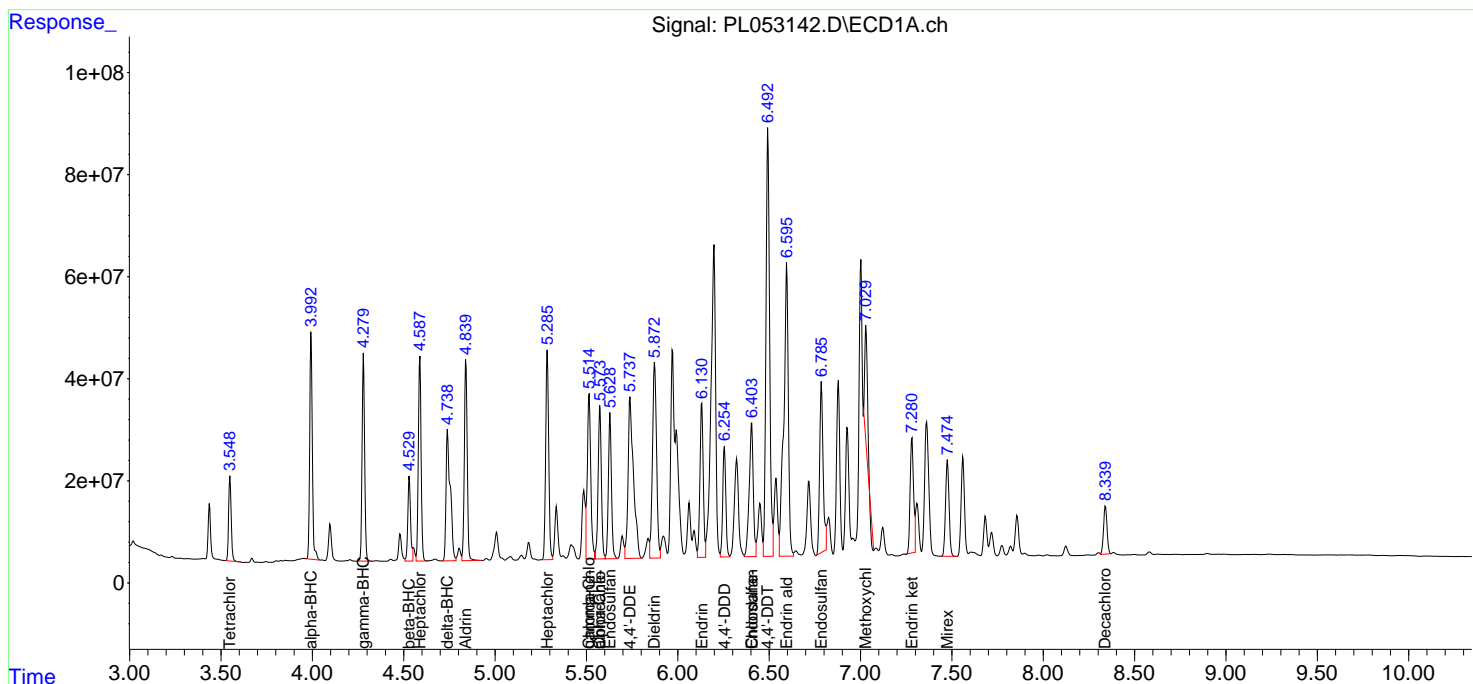
(f)=RT Delta > 1/2 Window (#)=Amounts differ by > 25% (m)=manual int.

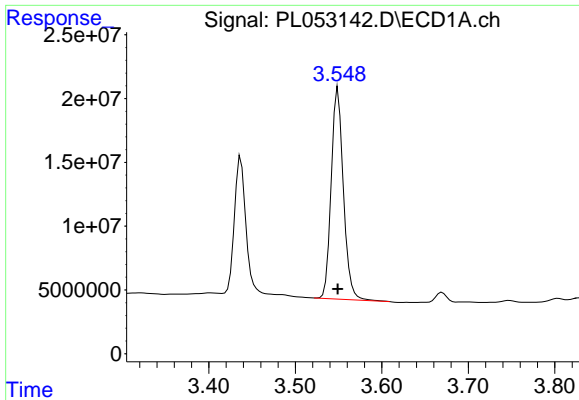
Data Path : Z:\pestpcbsrv\HPCHEM1\ECD_L\Data\PL100819\
 Data File : PL053142.D
 Signal(s) : Signal #1: ECD1A.ch Signal #2: ECD2B.ch
 Acq On : 08 Oct 2019 12:23
 Operator : SG\AJ
 Sample : K5213-0MS
 Misc :
 ALS Vial : 8 Sample Multiplier: 1

Instrument :
 ECD_L
 ClientSampled :

Integration File signal 1: autoint1.e
 Integration File signal 2: autoint2.e
 Quant Time: Oct 09 00:39:25 2019
 Quant Method : Z:\pestpcbsrv\HPCHEM1\ECD_L\methods\PL092919.M
 Quant Title : GC Extractables
 QLast Update : Mon Sep 30 08:44:08 2019
 Response via : Initial Calibration
 Integrator: ChemStation

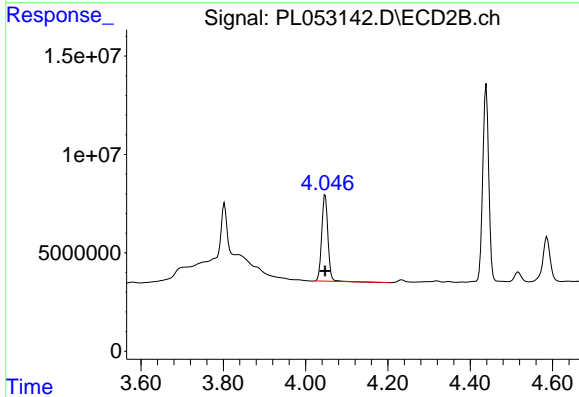
Volume Inj. : 1 µl
 Signal #1 Phase : ZB-MR2 Signal #2 Phase: ZB-MR1
 Signal #1 Info : 30M x 0.32mm x0.2 Signal #2 Info : 30M x 0.32mm x0.5µm



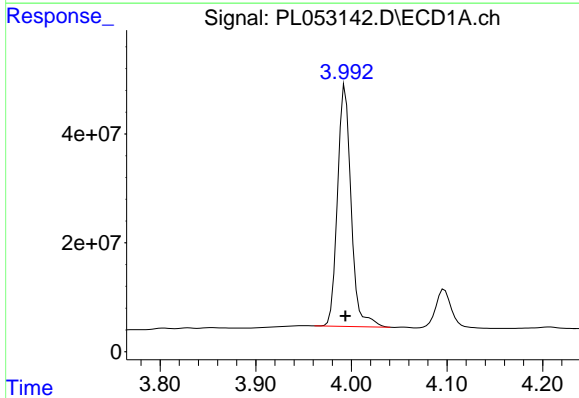


#1 Tetrachloro-m-xylene
 R.T.: 3.549 min
 Delta R.T.: 0.000 min
 Response: 161523077
 Conc: 16.24 ng/ml

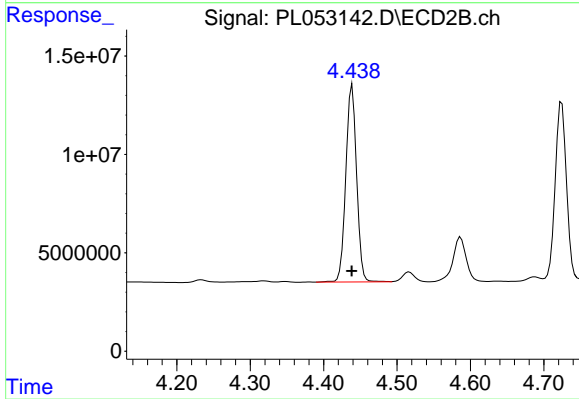
Instrument :
 ECD_L
 ClientSampleId :



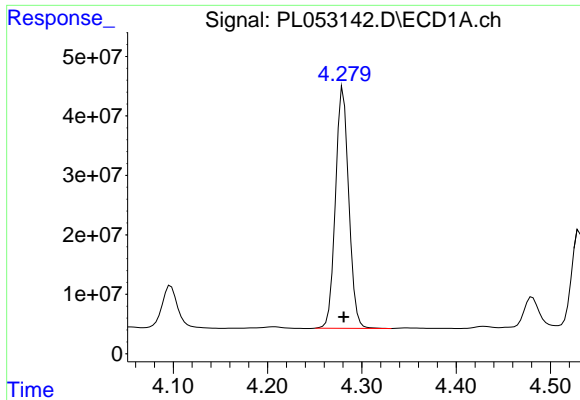
#1 Tetrachloro-m-xylene
 R.T.: 4.048 min
 Delta R.T.: 0.000 min
 Response: 46215261
 Conc: 17.21 ng/ml



#2 alpha-BHC
 R.T.: 3.994 min
 Delta R.T.: 0.000 min
 Response: 438269459
 Conc: 27.48 ng/ml

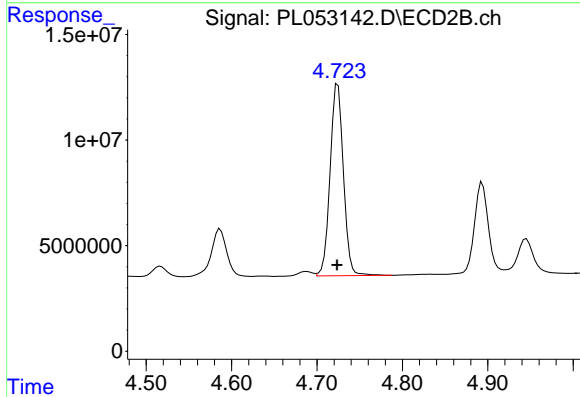


#2 alpha-BHC
 R.T.: 4.439 min
 Delta R.T.: 0.000 min
 Response: 102466752
 Conc: 26.68 ng/ml

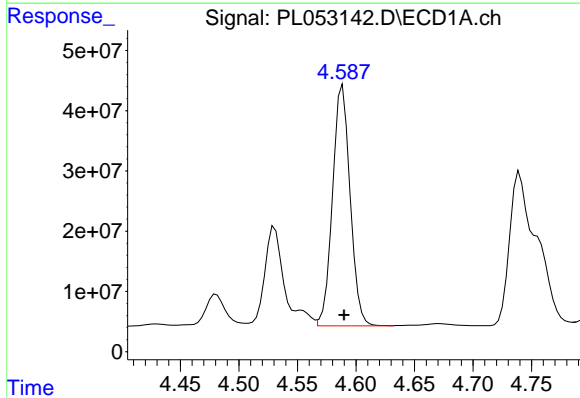


#3 gamma-BHC (Lindane)
 R.T.: 4.280 min
 Delta R.T.: 0.000 min
 Response: 397275839
 Conc: 27.28 ng/ml

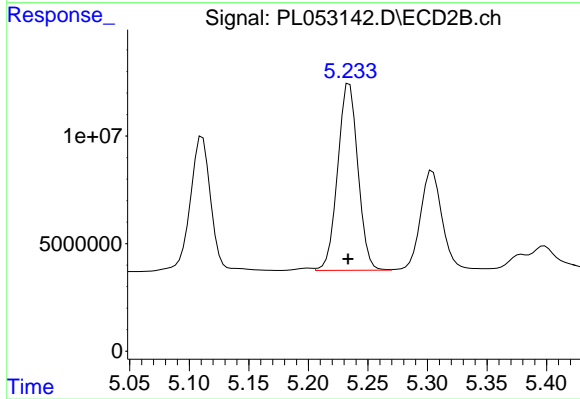
Instrument :
 ECD_L
 ClientSampled :



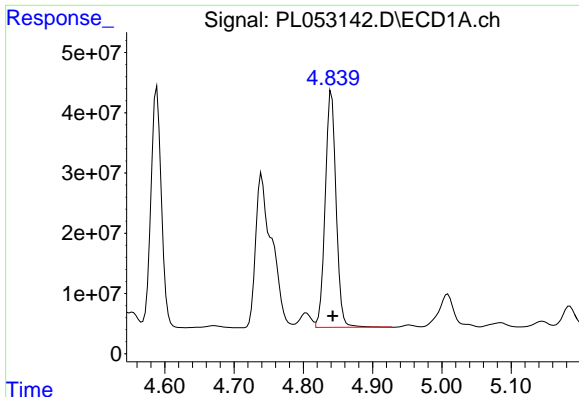
#3 gamma-BHC (Lindane)
 R.T.: 4.724 min
 Delta R.T.: 0.001 min
 Response: 98786709
 Conc: 27.28 ng/ml



#4 Heptachlor
 R.T.: 4.589 min
 Delta R.T.: -0.001 min
 Response: 417540164
 Conc: 27.94 ng/ml



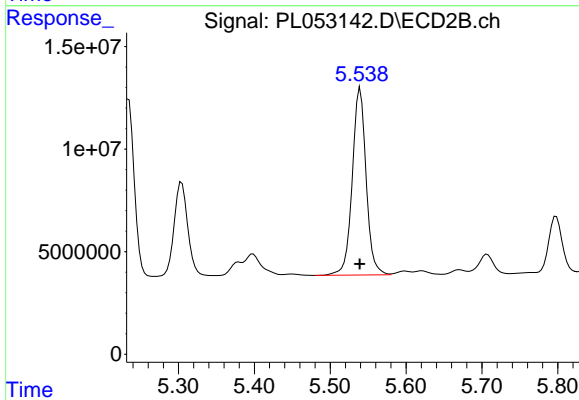
#4 Heptachlor
 R.T.: 5.234 min
 Delta R.T.: 0.001 min
 Response: 102583085
 Conc: 26.92 ng/ml



#5 Aldrin

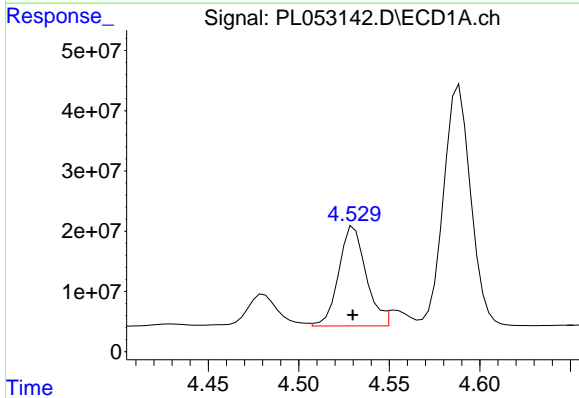
R.T.: 4.841 min
 Delta R.T.: -0.002 min
 Response: 428392001
 Conc: 31.14 ng/ml

Instrument :
 ECD_L
 ClientSampled :



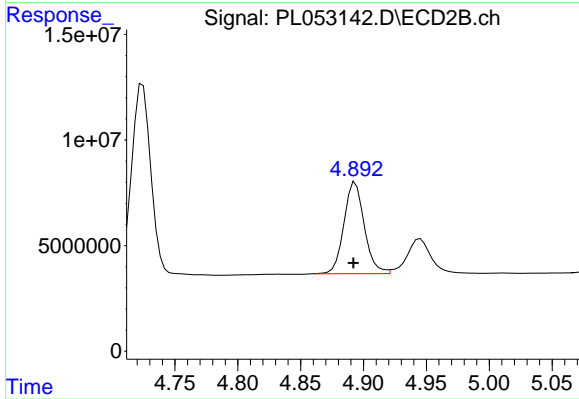
#5 Aldrin

R.T.: 5.540 min
 Delta R.T.: 0.000 min
 Response: 115718725
 Conc: 33.39 ng/ml



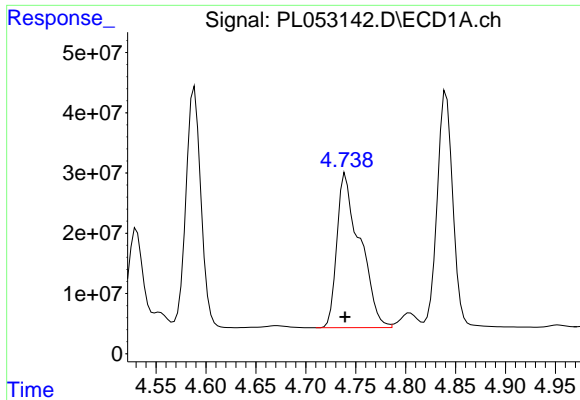
#6 beta-BHC

R.T.: 4.531 min
 Delta R.T.: 0.000 min
 Response: 173528387
 Conc: 27.95 ng/ml



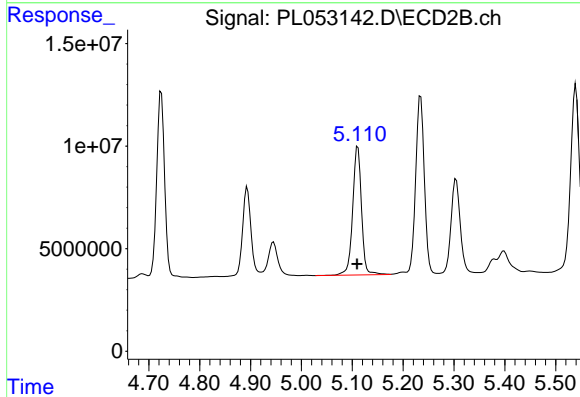
#6 beta-BHC

R.T.: 4.894 min
 Delta R.T.: 0.002 min
 Response: 48955306
 Conc: 31.15 ng/ml

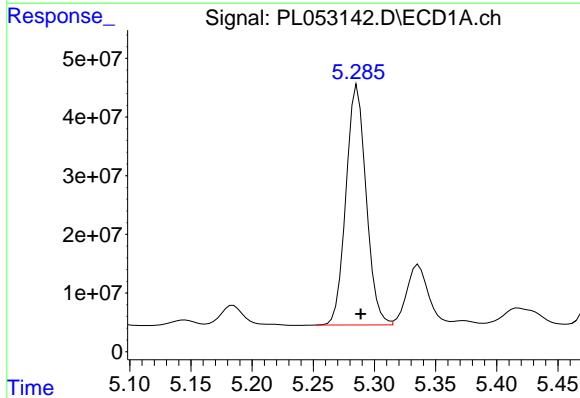


#7 delta-BHC
 R.T.: 4.740 min
 Delta R.T.: 0.000 min
 Response: 412208092
 Conc: 28.77 ng/ml

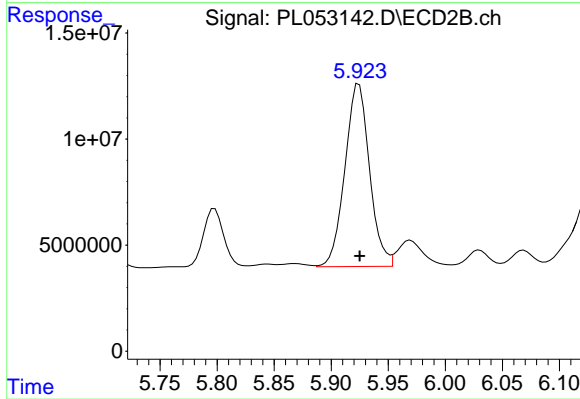
Instrument :
 ECD_L
 ClientSampled :



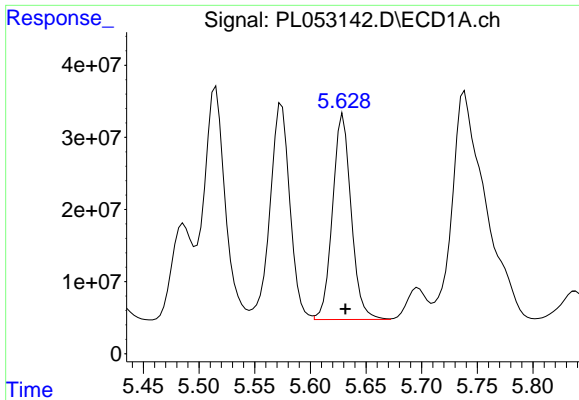
#7 delta-BHC
 R.T.: 5.111 min
 Delta R.T.: 0.002 min
 Response: 75720994
 Conc: 20.92 ng/ml



#8 Heptachlor epoxide
 R.T.: 5.286 min
 Delta R.T.: -0.003 min
 Response: 468593866
 Conc: 35.96 ng/ml

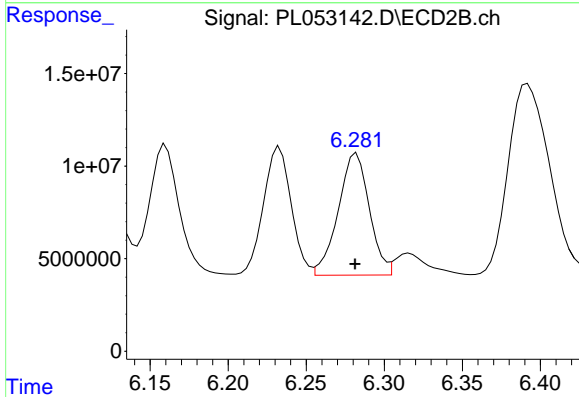


#8 Heptachlor epoxide
 R.T.: 5.924 min
 Delta R.T.: 0.000 min
 Response: 129199611
 Conc: 38.55 ng/ml

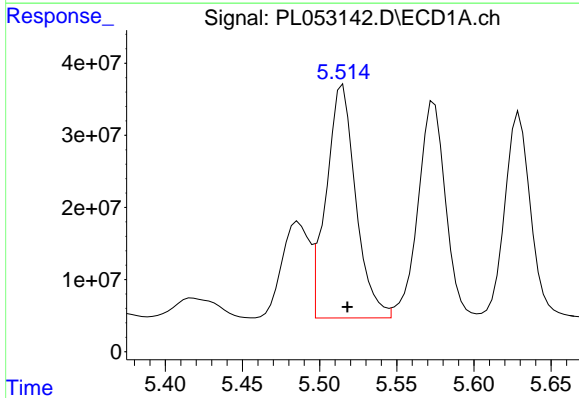


#9 Endosulfan I
 R.T.: 5.629 min
 Delta R.T.: -0.002 min
 Response: 331819928
 Conc: 27.34 ng/ml

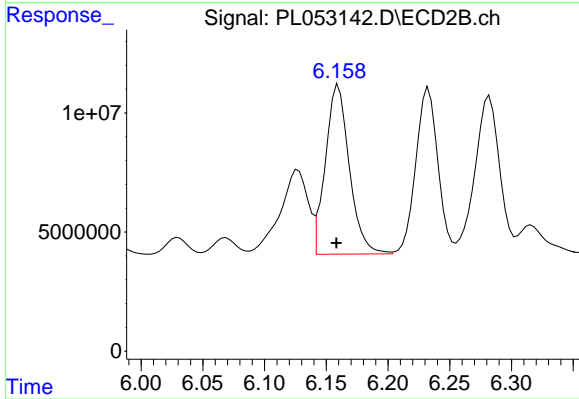
Instrument :
 ECD_L
 ClientSampleId :



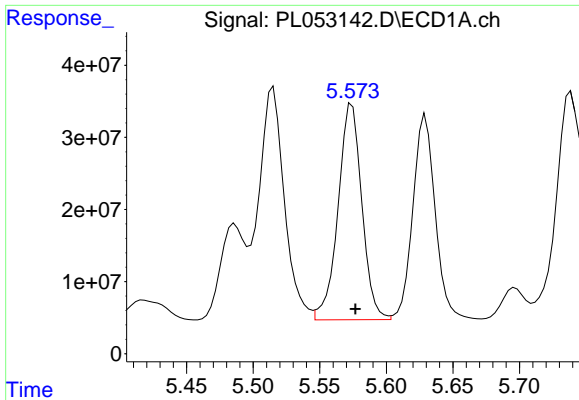
#9 Endosulfan I
 R.T.: 6.282 min
 Delta R.T.: 0.000 min
 Response: 91425321
 Conc: 29.25 ng/ml



#10 gamma-Chlordane
 R.T.: 5.515 min
 Delta R.T.: -0.003 min
 Response: 431669462
 Conc: 32.10 ng/ml

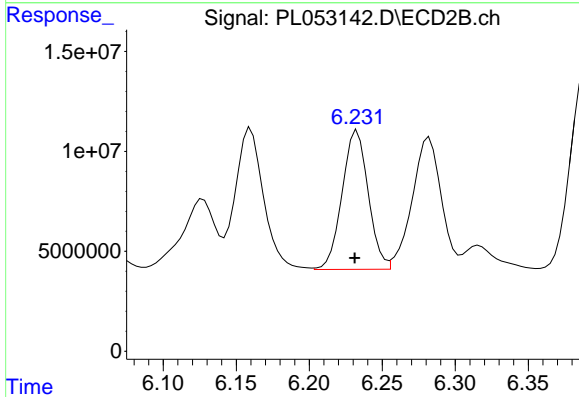


#10 gamma-Chlordane
 R.T.: 6.160 min
 Delta R.T.: 0.002 min
 Response: 96116992
 Conc: 28.41 ng/ml

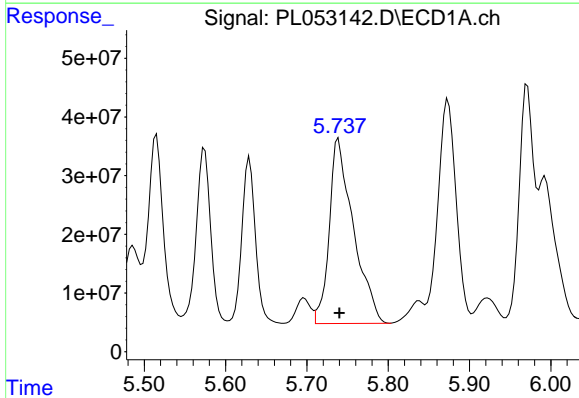


#11 alpha-Chlordane
 R.T.: 5.574 min
 Delta R.T.: -0.002 min
 Response: 373288188
 Conc: 28.30 ng/ml

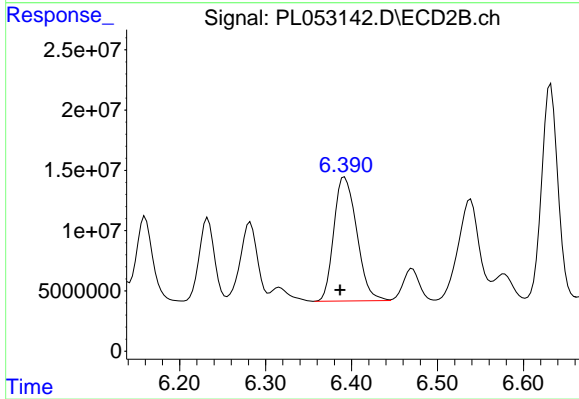
Instrument :
 ECD_L
 ClientSampled :



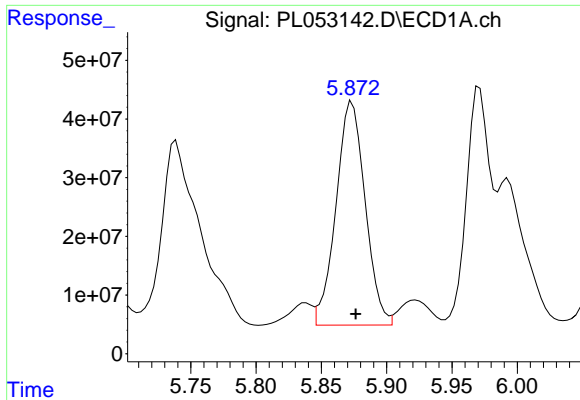
#11 alpha-Chlordane
 R.T.: 6.233 min
 Delta R.T.: 0.002 min
 Response: 86560798
 Conc: 25.72 ng/ml



#12 4,4'-DDE
 R.T.: 5.739 min
 Delta R.T.: -0.001 min
 Response: 651357889
 Conc: 56.12 ng/ml



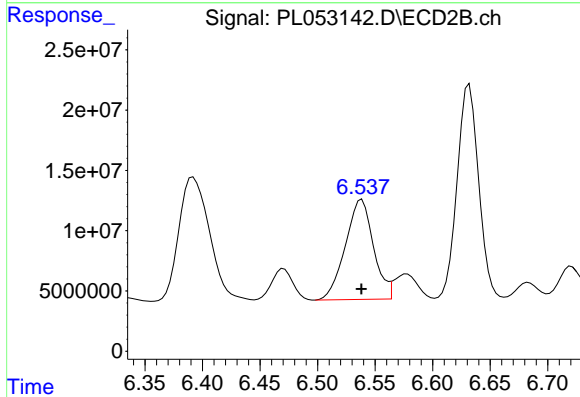
#12 4,4'-DDE
 R.T.: 6.392 min
 Delta R.T.: 0.006 min
 Response: 190372362
 Conc: 58.29 ng/ml



#13 Dieldrin

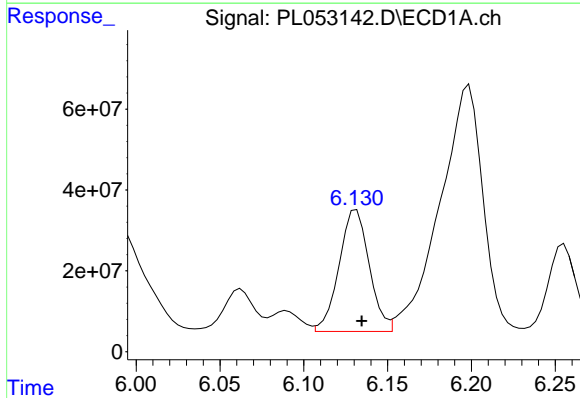
R.T.: 5.874 min
Delta R.T.: -0.003 min
Response: 593810650
Conc: 46.00 ng/ml

Instrument :
ECD_L
ClientSampled :



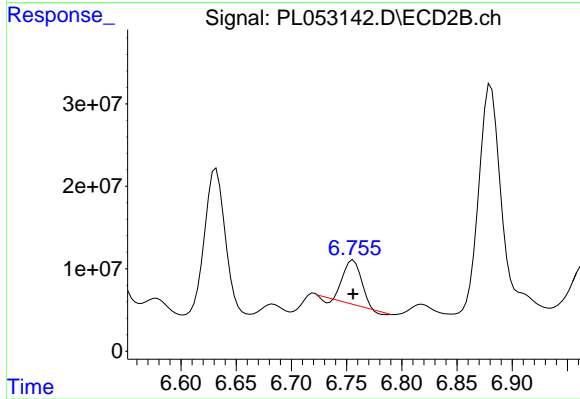
#13 Dieldrin

R.T.: 6.538 min
Delta R.T.: 0.000 min
Response: 141149564
Conc: 43.27 ng/ml



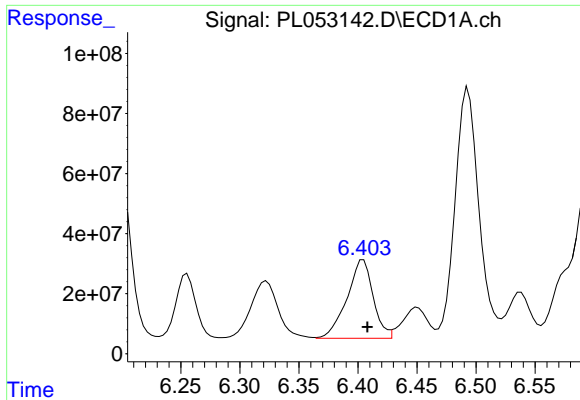
#14 Endrin

R.T.: 6.131 min
Delta R.T.: -0.003 min
Response: 376803916
Conc: 33.08 ng/ml



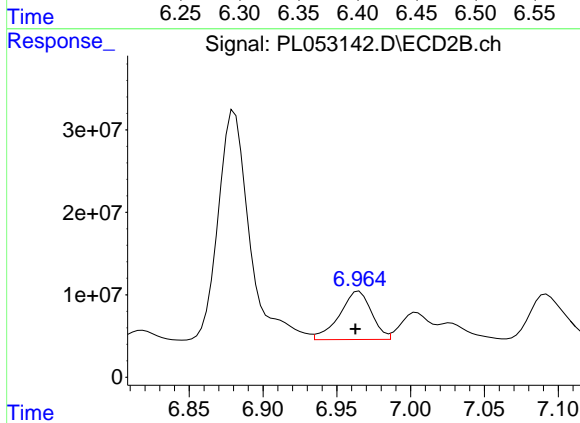
#14 Endrin

R.T.: 6.756 min
Delta R.T.: 0.000 min
Response: 59519485
Conc: 21.43 ng/ml

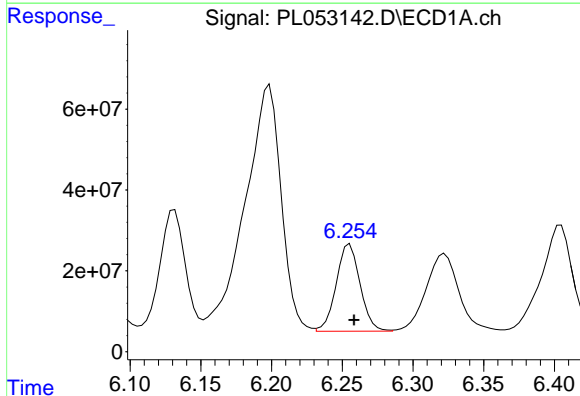


#15 Endosulfan II
 R.T.: 6.405 min
 Delta R.T.: -0.004 min
 Response: 403556507
 Conc: 35.22 ng/ml

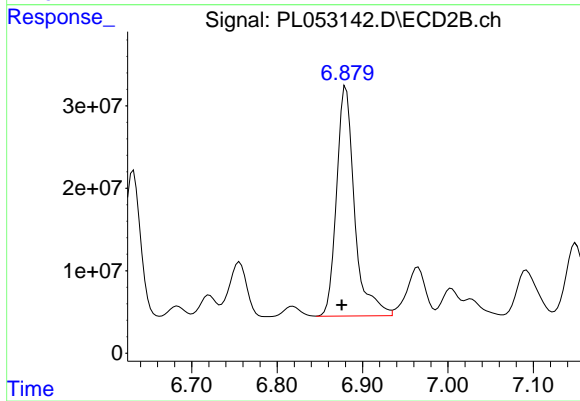
Instrument :
 ECD_L
 ClientSampled :



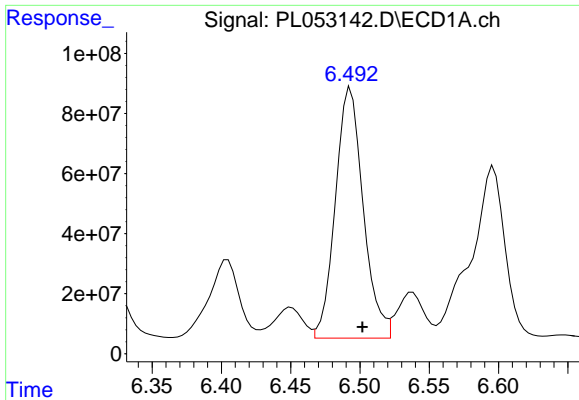
#15 Endosulfan II
 R.T.: 6.965 min
 Delta R.T.: 0.003 min
 Response: 88745915
 Conc: 29.91 ng/ml



#16 4,4'-DDD
 R.T.: 6.255 min
 Delta R.T.: -0.003 min
 Response: 253423448
 Conc: 28.19 ng/ml



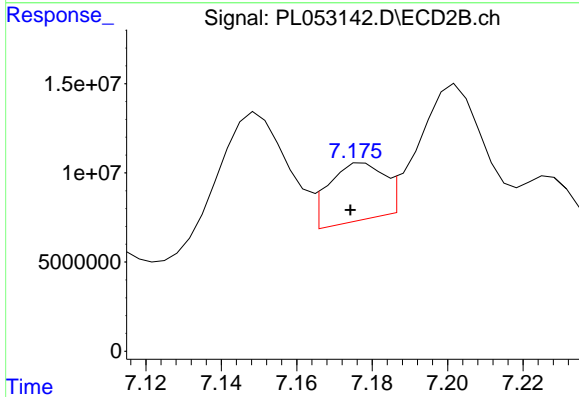
#16 4,4'-DDD
 R.T.: 6.881 min
 Delta R.T.: 0.005 min
 Response: 409499141
 Conc: 166.97 ng/ml



#17 4,4'-DDT

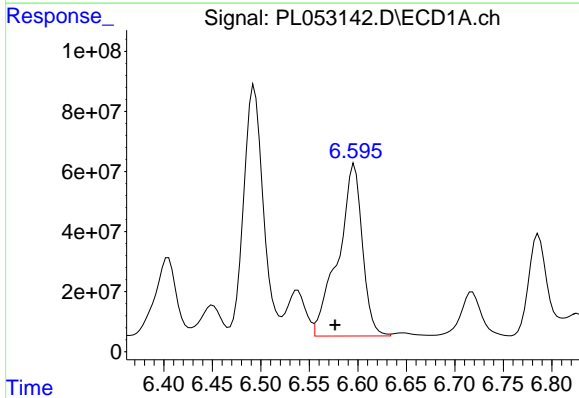
R.T.: 6.493 min
 Delta R.T.: -0.008 min
 Response: 1167149844
 Conc: 114.29 ng/ml

Instrument :
 ECD_L
 ClientSampleId :



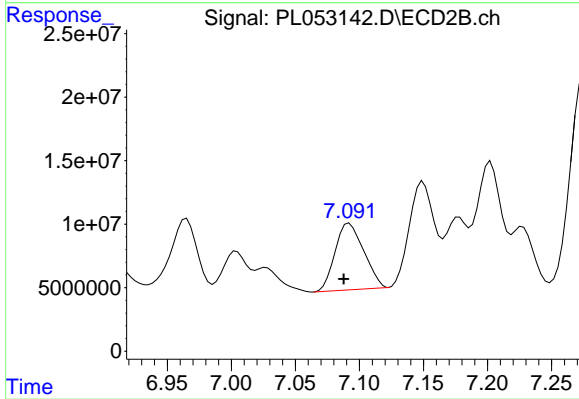
#17 4,4'-DDT

R.T.: 7.178 min
 Delta R.T.: 0.004 min
 Response: 32450623
 Conc: 12.47 ng/ml



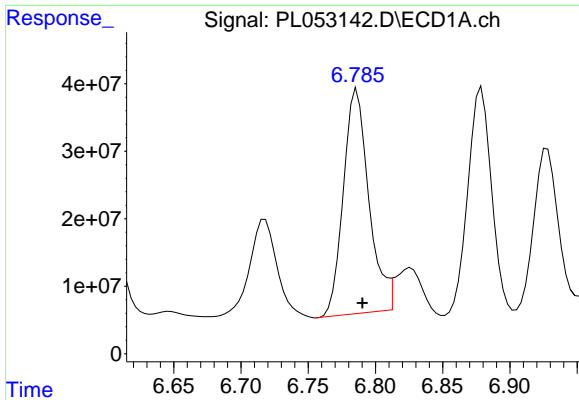
#18 Endrin aldehyde

R.T.: 6.596 min
 Delta R.T.: 0.020 min
 Response: 990888306
 Conc: 105.52 ng/ml



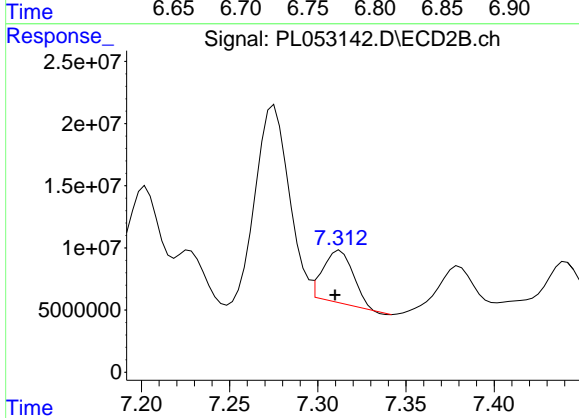
#18 Endrin aldehyde

R.T.: 7.092 min
 Delta R.T.: 0.004 min
 Response: 81368028
 Conc: 33.18 ng/ml

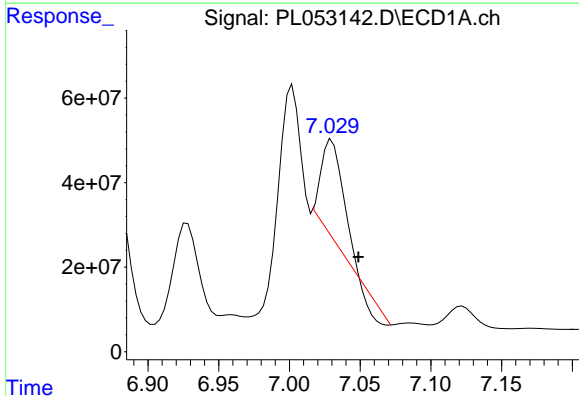


#19 Endosulfan Sulfate
 R.T.: 6.786 min
 Delta R.T.: -0.004 min
 Response: 437743232
 Conc: 42.05 ng/ml

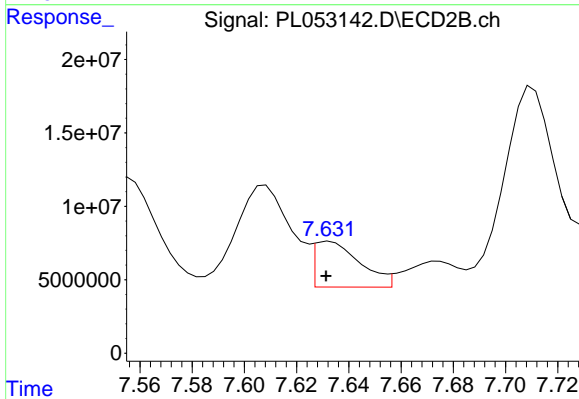
Instrument :
 ECD_L
 ClientSampled :



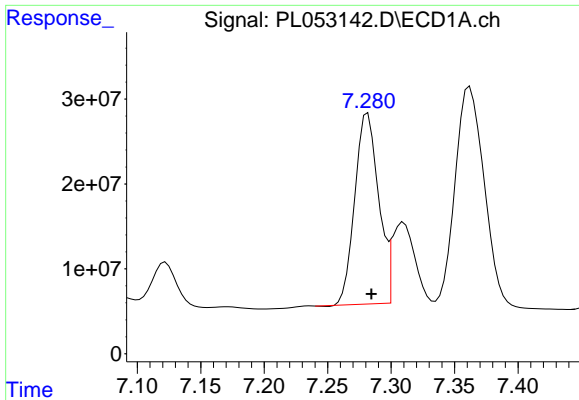
#19 Endosulfan Sulfate
 R.T.: 7.313 min
 Delta R.T.: 0.003 min
 Response: 50416110
 Conc: 18.46 ng/ml



#20 Methoxychlor
 R.T.: 7.030 min
 Delta R.T.: -0.019 min
 Response: 227726060
 Conc: 44.15 ng/ml

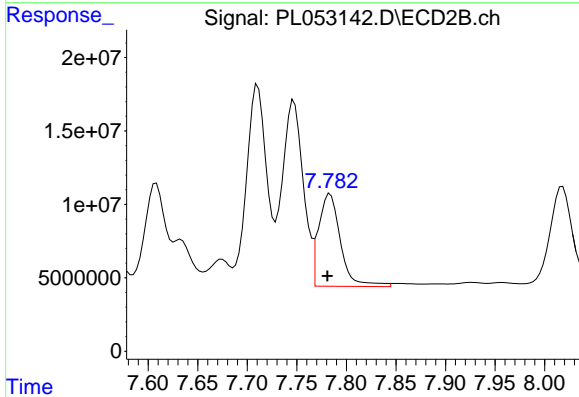


#20 Methoxychlor
 R.T.: 7.633 min
 Delta R.T.: 0.001 min
 Response: 37643711
 Conc: 26.74 ng/ml

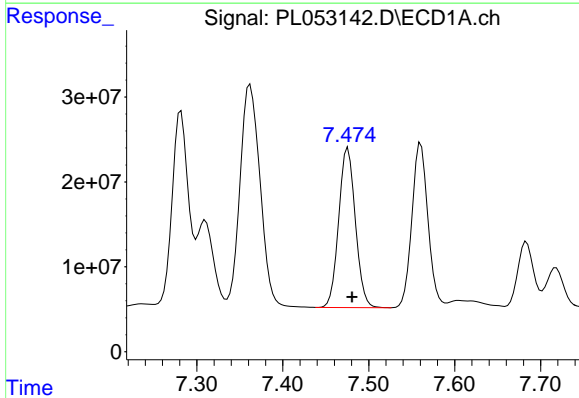


#21 Endrin ketone
R.T.: 7.282 min
Delta R.T.: -0.003 min
Response: 292341030
Conc: 25.08 ng/ml

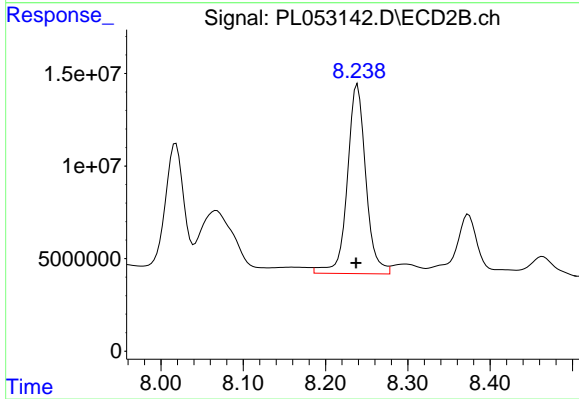
Instrument :
ECD_L
ClientSampleId :



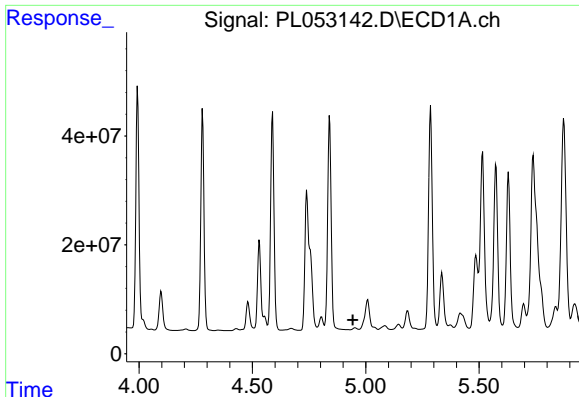
#21 Endrin ketone
R.T.: 7.784 min
Delta R.T.: 0.003 min
Response: 96709899
Conc: 33.90 ng/ml



#22 Mirex
R.T.: 7.476 min
Delta R.T.: -0.005 min
Response: 253409650
Conc: 26.83 ng/ml



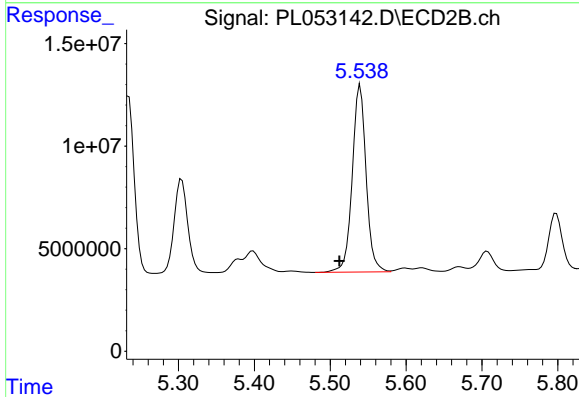
#22 Mirex
R.T.: 8.239 min
Delta R.T.: 0.002 min
Response: 159757912
Conc: 71.03 ng/ml



#24 Chlordane-2

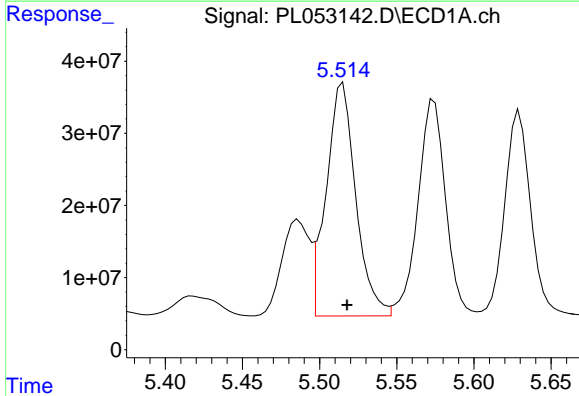
R.T.: 0.000 min
 Exp R.T.: 4.942 min
 Response: 0
 Conc: N.D.

Instrument :
 ECD_L
 ClientSampled :



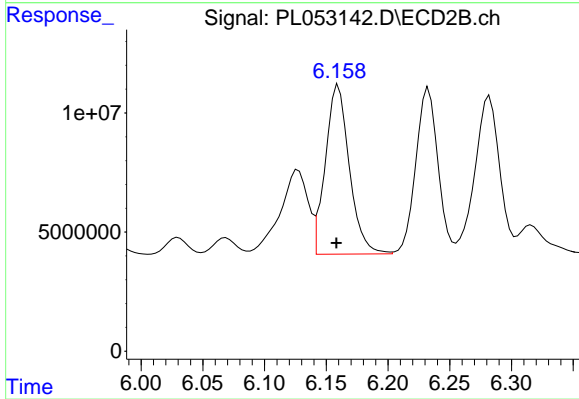
#24 Chlordane-2

R.T.: 5.540 min
 Delta R.T.: 0.028 min
 Response: 115718725
 Conc: 1033.92 ng/ml



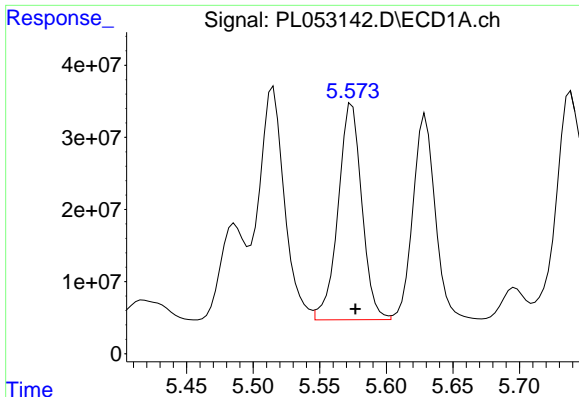
#25 Chlordane-3

R.T.: 5.515 min
 Delta R.T.: -0.003 min
 Response: 431669462
 Conc: 372.55 ng/ml



#25 Chlordane-3

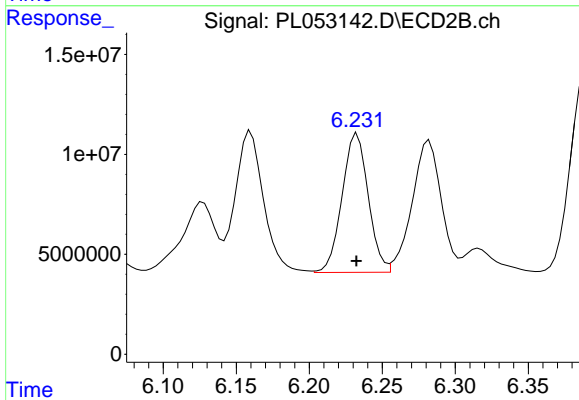
R.T.: 6.160 min
 Delta R.T.: 0.002 min
 Response: 96116992
 Conc: 220.70 ng/ml



#26 Chlordane-4

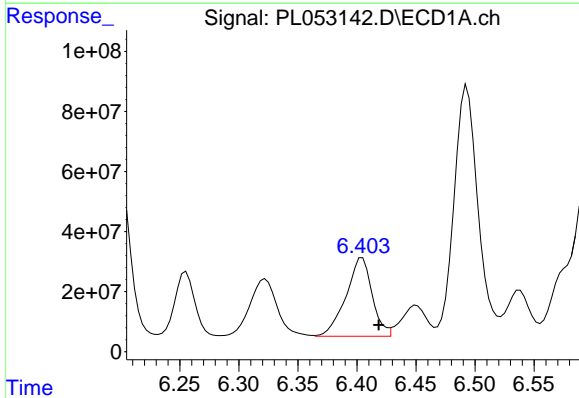
R.T.: 5.574 min
 Delta R.T.: -0.002 min
 Response: 373288188
 Conc: 391.12 ng/ml

Instrument :
 ECD_L
 ClientSampled :



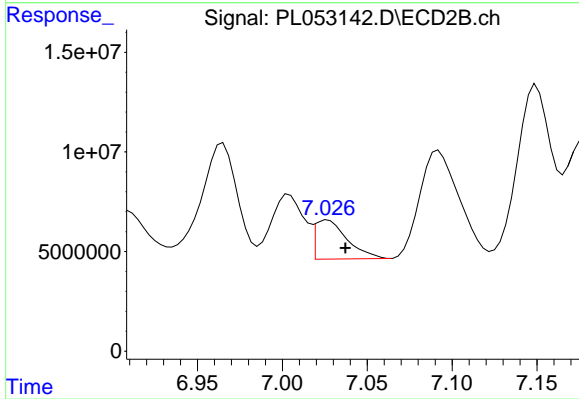
#26 Chlordane-4

R.T.: 6.233 min
 Delta R.T.: 0.000 min
 Response: 86560798
 Conc: 163.02 ng/ml



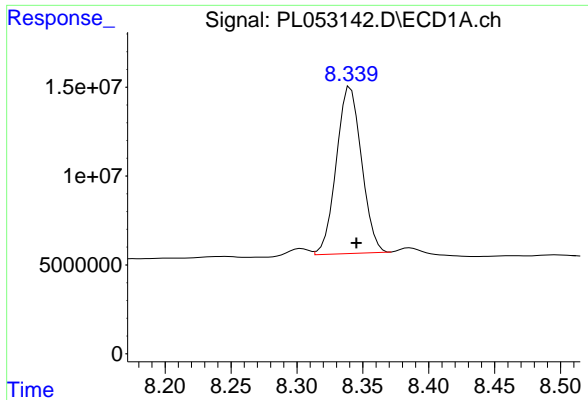
#27 Chlordane-5

R.T.: 6.405 min
 Delta R.T.: -0.014 min
 Response: 403556507
 Conc: 1023.13 ng/ml



#27 Chlordane-5

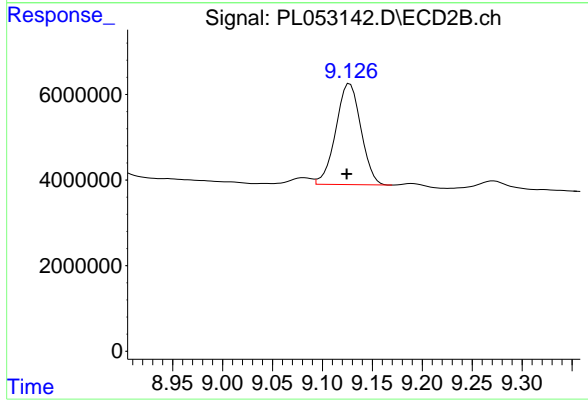
R.T.: 7.027 min
 Delta R.T.: -0.010 min
 Response: 25448325
 Conc: 288.50 ng/ml



#28 Decachlorobiphenyl

R.T.: 8.341 min
Delta R.T.: -0.005 min
Response: 124746156
Conc: 12.45 ng/ml

Instrument :
ECD_L
ClientSampleId :



#28 Decachlorobiphenyl

R.T.: 9.128 min
Delta R.T.: 0.003 min
Response: 41288682
Conc: 14.07 ng/ml