

Data Path : Z:\pestpcbsrv\HPCHEM1\ECD\_L\Data\PL100821\  
 Data File : PL070186.D  
 Signal(s) : Signal #1: ECD1A.ch Signal #2: ECD2B.ch  
 Acq On : 08 Oct 2021 09:34  
 Operator : AR\AJ  
 Sample : PEM  
 Misc :  
 ALS Vial : 3 Sample Multiplier: 1

Instrument :  
 ECD\_L  
 ClientSampled :  
 PEM

Manual Integrations  
 APPROVED

mohammad  
 10/12/2021 8:49:29 AM

Integration File signal 1: autoint1.e  
 Integration File signal 2: autoint2.e  
 Quant Time: Oct 09 00:06:14 2021  
 Quant Method : Z:\pestpcbsrv\HPCHEM1\ECD\_L\methods\PL092821.M  
 Quant Title : GC Extractables  
 QLast Update : Wed Sep 29 09:19:28 2021  
 Response via : Initial Calibration  
 Integrator: ChemStation

Volume Inj. : 1 µl  
 Signal #1 Phase : ZB-MR2 Signal #2 Phase: ZB-MR1  
 Signal #1 Info : 30M x 0.32mm x0.2 Signal #2 Info : 30M x 0.32mm x0.5µm

Compound	RT#1	RT#2	Resp#1	Resp#2	ng/ml	ng/ml
-----						
System Monitoring Compounds						
1) SA Tetrachlo...	4.636	5.568	9622715	27883539	19.231	21.082
28) SA Decachlor...	10.400	11.495	15163033	26320216	21.913	21.749
Target Compounds						
2) A alpha-BHC	5.342	6.150	5860553	18794958	7.917	9.609
3) MA gamma-BHC...	5.765	6.546	5810853	18019956	8.322	9.835
6) B beta-BHC	6.146	6.801	4197951	15580066	12.504	18.119 #
12) B 4,4'-DDE	7.636	8.570	144391	243874	0.227	0.157m#
14) MA Endrin	8.055	8.969	29302795	69453019	46.370	55.291
16) A 4,4'-DDD	8.220	9.110	184884	260350	0.330	0.220m#
17) MA 4,4'-DDT	8.482	9.429	60434146	142.9E6	98.795	109.327
20) A Methoxychlor	9.076	9.915	86489662	176.1E6	231.627	272.067
21) B Endrin ke...	9.302	10.076	431606	1000554	0.565	0.748 #

(f)=RT Delta > 1/2 Window (#)=Amounts differ by > 25% (m)=manual int.

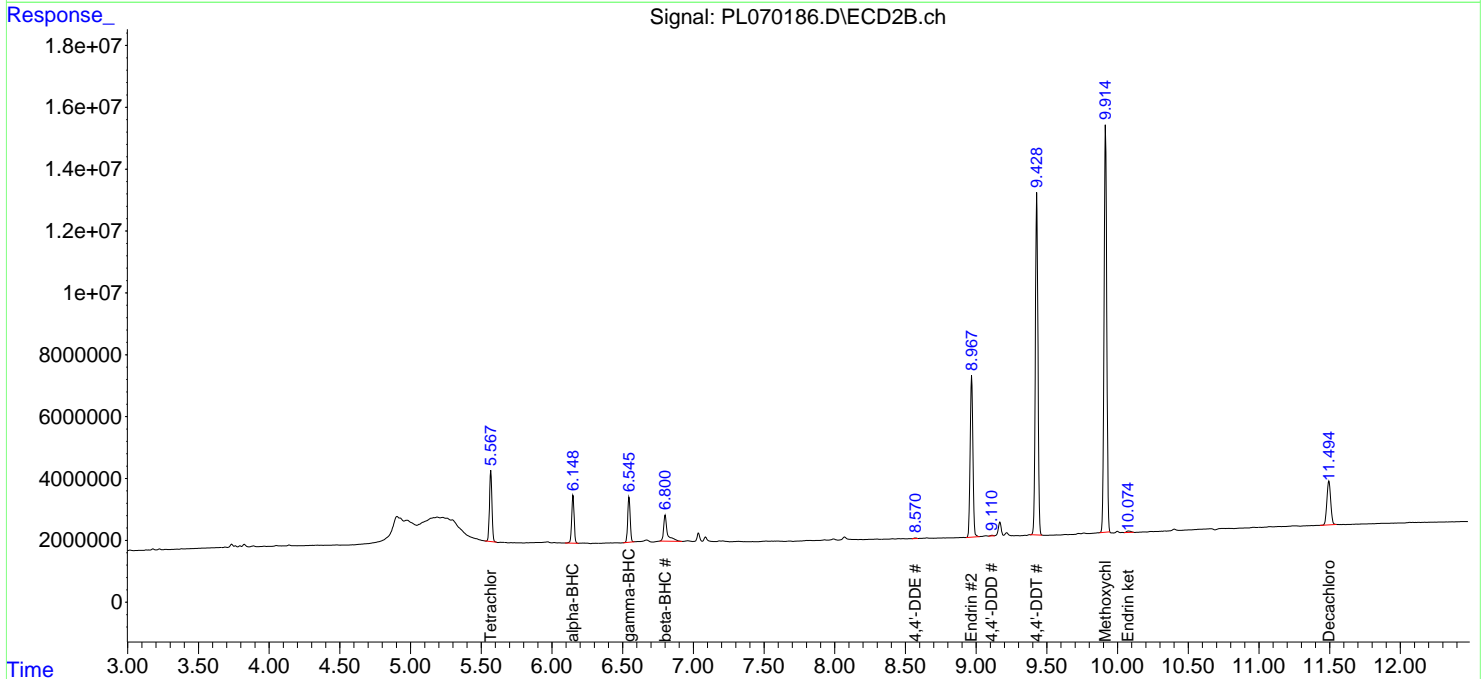
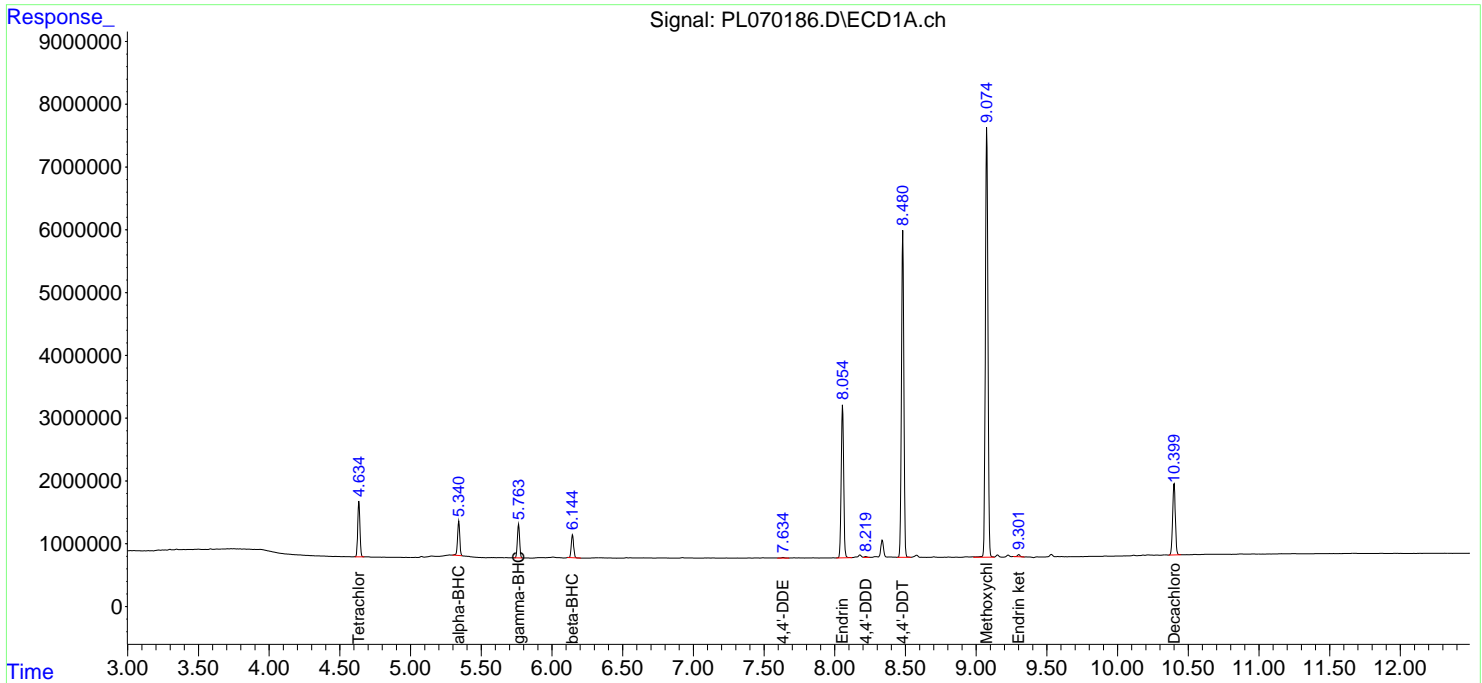
Data Path : Z:\pestpcbsrv\HPCHEM1\ECD\_L\Data\PL100821\  
 Data File : PL070186.D  
 Signal(s) : Signal #1: ECD1A.ch Signal #2: ECD2B.ch  
 Acq On : 08 Oct 2021 09:34  
 Operator : AR\AJ  
 Sample : PEM  
 Misc :  
 ALS Vial : 3 Sample Multiplier: 1

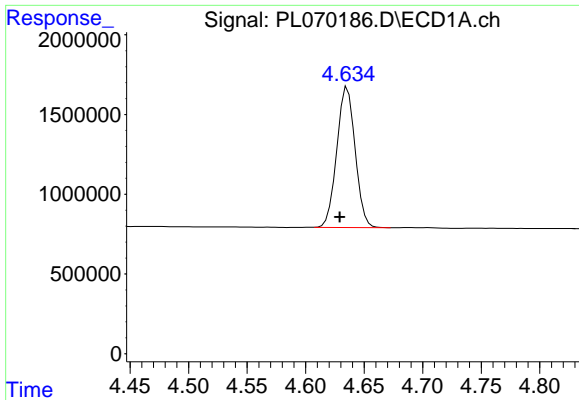
Instrument :  
 ECD\_L  
 Client Sampled :  
 PEM

Manual Integrations  
**APPROVED**  
 mohammad  
 10/12/2021 8:49:29 AM

Integration File signal 1: autoint1.e  
 Integration File signal 2: autoint2.e  
 Quant Time: Oct 09 00:06:14 2021  
 Quant Method : Z:\pestpcbsrv\HPCHEM1\ECD\_L\methods\PL092821.M  
 Quant Title : GC Extractables  
 QLast Update : Wed Sep 29 09:19:28 2021  
 Response via : Initial Calibration  
 Integrator: ChemStation

Volume Inj. : 1 µl  
 Signal #1 Phase : ZB-MR2 Signal #2 Phase: ZB-MR1  
 Signal #1 Info : 30M x 0.32mm x0.2 Signal #2 Info : 30M x 0.32mm x0.5µm

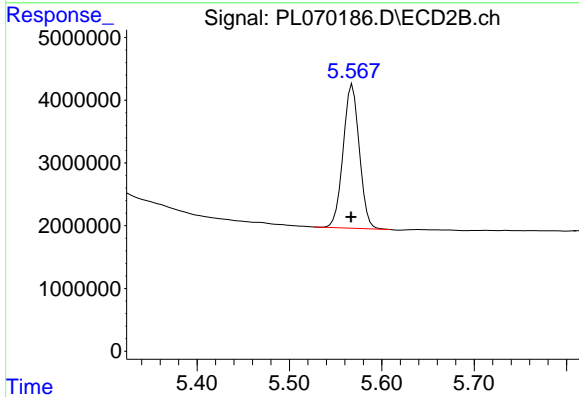




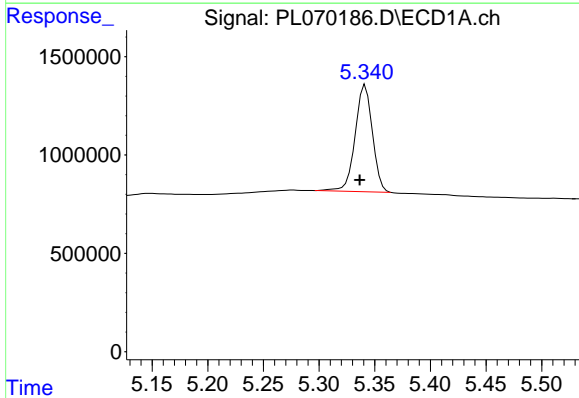
#1 Tetrachloro-m-xylene  
 R.T.: 4.636 min  
 Delta R.T.: 0.007 min  
 Response: 9622715  
 Conc: 19.23 ng/ml

Instrument :  
 ECD\_L  
 ClientSampled :  
 PEM

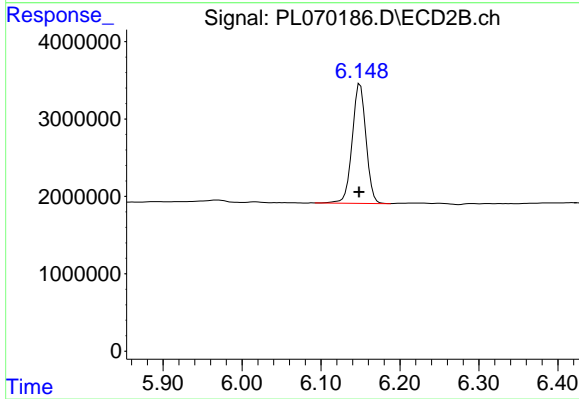
Manual Integrations  
 APPROVED  
 mohammad  
 10/12/2021 8:49:29 AM



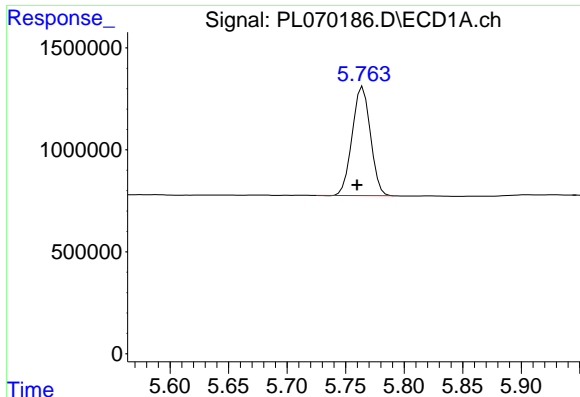
#1 Tetrachloro-m-xylene  
 R.T.: 5.568 min  
 Delta R.T.: 0.002 min  
 Response: 27883539  
 Conc: 21.08 ng/ml



#2 alpha-BHC  
 R.T.: 5.342 min  
 Delta R.T.: 0.005 min  
 Response: 5860553  
 Conc: 7.92 ng/ml



#2 alpha-BHC  
 R.T.: 6.150 min  
 Delta R.T.: 0.002 min  
 Response: 18794958  
 Conc: 9.61 ng/ml

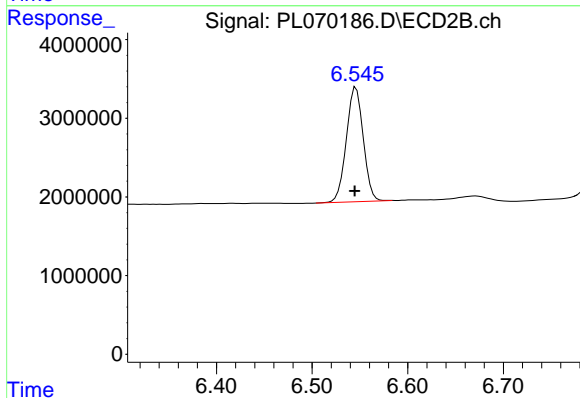


#3 gamma-BHC (Lindane)  
 R.T.: 5.765 min  
 Delta R.T.: 0.005 min  
 Response: 5810853  
 Conc: 8.32 ng/ml

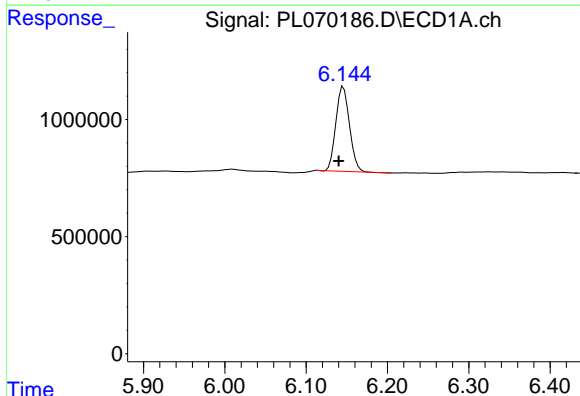
Instrument :  
 ECD\_L  
 ClientSampleId :  
 PEM

Manual Integrations  
 APPROVED

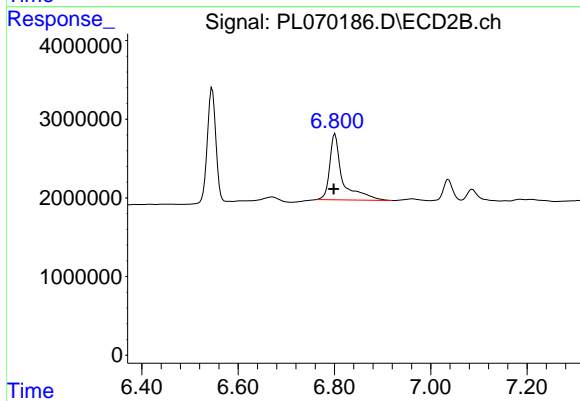
mohammad  
 10/12/2021 8:49:29 AM



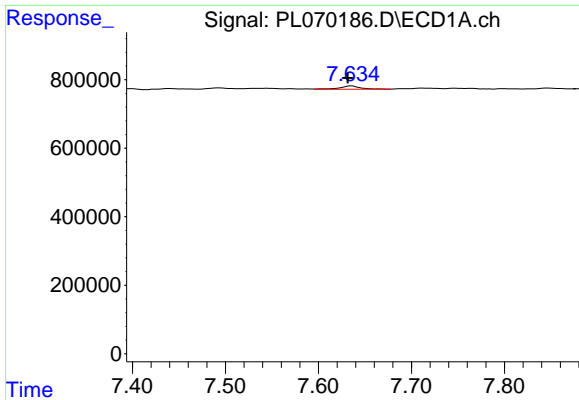
#3 gamma-BHC (Lindane)  
 R.T.: 6.546 min  
 Delta R.T.: 0.001 min  
 Response: 18019956  
 Conc: 9.84 ng/ml



#6 beta-BHC  
 R.T.: 6.146 min  
 Delta R.T.: 0.006 min  
 Response: 4197951  
 Conc: 12.50 ng/ml



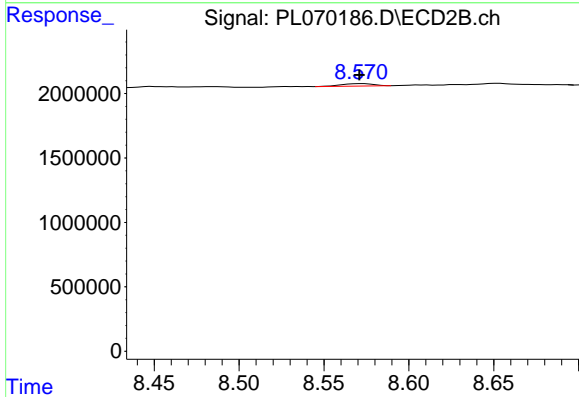
#6 beta-BHC  
 R.T.: 6.801 min  
 Delta R.T.: 0.003 min  
 Response: 15580066  
 Conc: 18.12 ng/ml



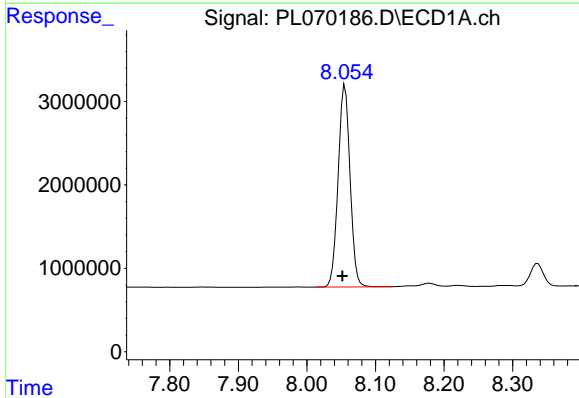
#12 4,4'-DDE  
 R.T.: 7.636 min  
 Delta R.T.: 0.004 min  
 Response: 144391  
 Conc: 0.23 ng/ml

**Instrument :**  
 ECD\_L  
**ClientSampled :**  
 PEM

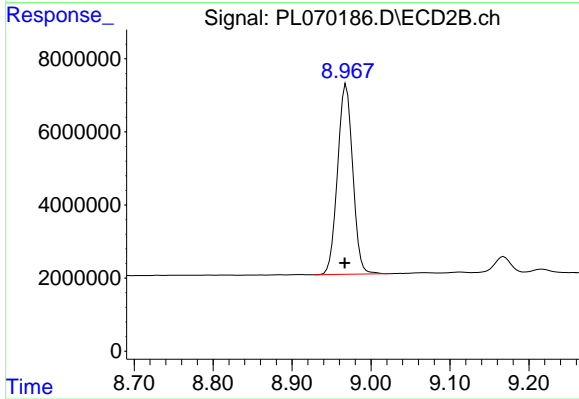
**Manual Integrations**  
**APPROVED**  
 mohammad  
 10/12/2021 8:49:29 AM



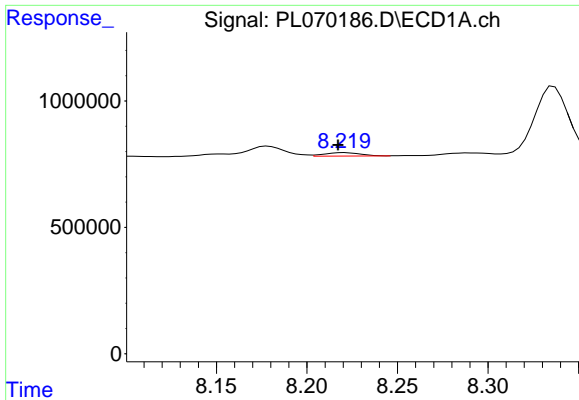
#12 4,4'-DDE  
 R.T.: 8.570 min  
 Delta R.T.: 0.000 min  
 Response: 243874  
 Conc: 0.16 ng/ml m



#14 Endrin  
 R.T.: 8.055 min  
 Delta R.T.: 0.004 min  
 Response: 29302795  
 Conc: 46.37 ng/ml



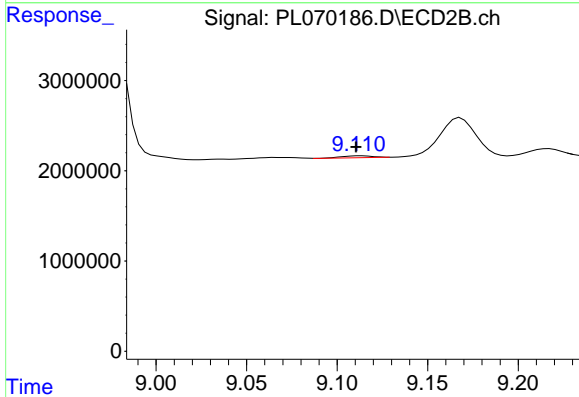
#14 Endrin  
 R.T.: 8.969 min  
 Delta R.T.: 0.002 min  
 Response: 69453019  
 Conc: 55.29 ng/ml



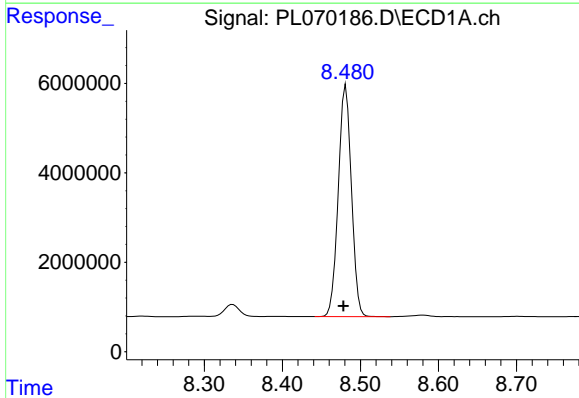
#16 4,4'-DDD  
 R.T.: 8.220 min  
 Delta R.T.: 0.003 min  
 Response: 184884  
 Conc: 0.33 ng/ml

Instrument :  
 ECD\_L  
 ClientSampled :  
 PEM

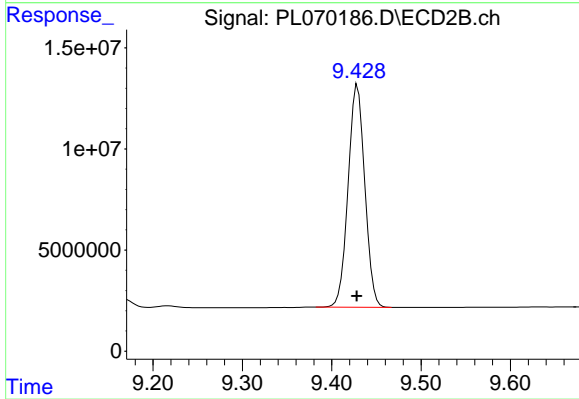
Manual Integrations  
 APPROVED  
 mohammad  
 10/12/2021 8:49:29 AM



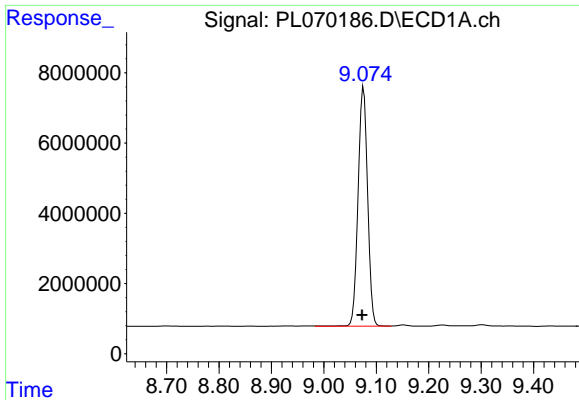
#16 4,4'-DDD  
 R.T.: 9.110 min  
 Delta R.T.: 0.000 min  
 Response: 260350  
 Conc: 0.22 ng/ml m



#17 4,4'-DDT  
 R.T.: 8.482 min  
 Delta R.T.: 0.003 min  
 Response: 60434146  
 Conc: 98.80 ng/ml



#17 4,4'-DDT  
 R.T.: 9.429 min  
 Delta R.T.: 0.000 min  
 Response: 142872145  
 Conc: 109.33 ng/ml

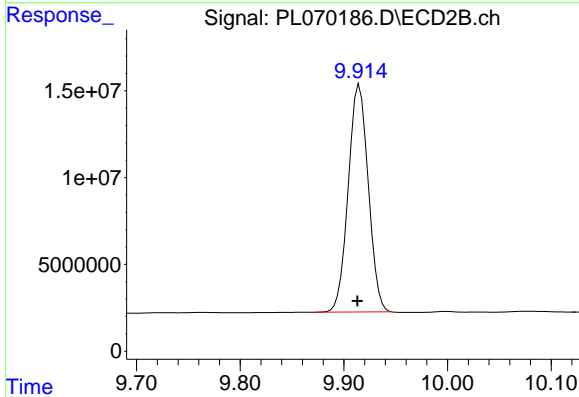


#20 Methoxychlor

R.T.: 9.076 min  
 Delta R.T.: 0.003 min  
 Response: 86489662  
 Conc: 231.63 ng/ml

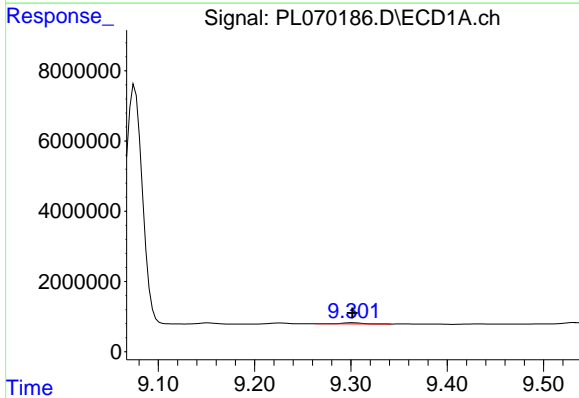
Instrument :  
 ECD\_L  
 ClientSampled :  
 PEM

Manual Integrations  
 APPROVED  
 mohammad  
 10/12/2021 8:49:29 AM



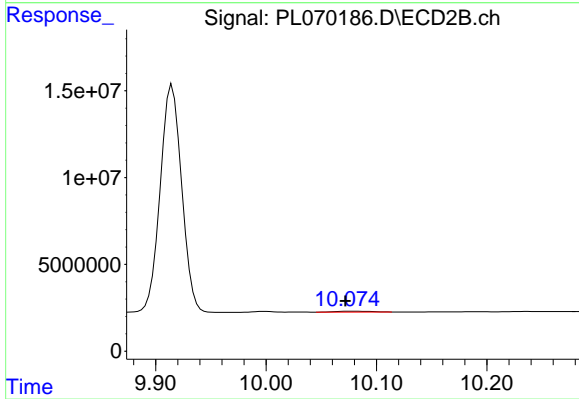
#20 Methoxychlor

R.T.: 9.915 min  
 Delta R.T.: 0.002 min  
 Response: 176064793  
 Conc: 272.07 ng/ml



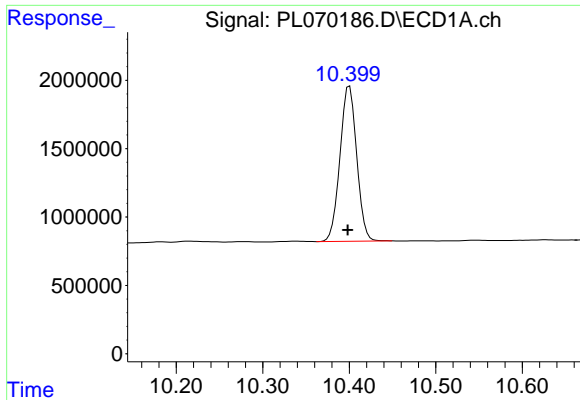
#21 Endrin ketone

R.T.: 9.302 min  
 Delta R.T.: 0.000 min  
 Response: 431606  
 Conc: 0.56 ng/ml



#21 Endrin ketone

R.T.: 10.076 min  
 Delta R.T.: 0.004 min  
 Response: 1000554  
 Conc: 0.75 ng/ml



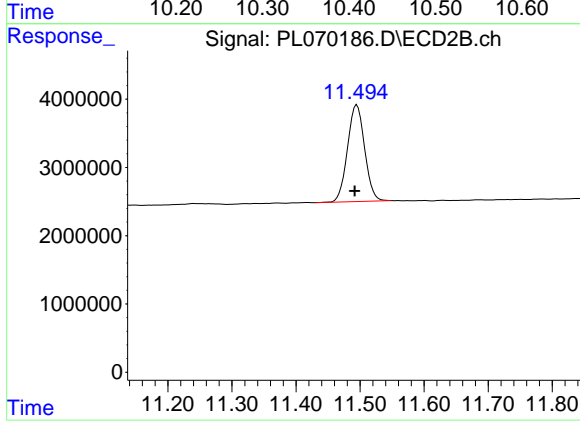
#28 Decachlorobiphenyl

R.T.: 10.400 min  
Delta R.T.: 0.002 min  
Response: 15163033  
Conc: 21.91 ng/ml

Instrument :  
ECD\_L  
ClientSampled :  
PEM

Manual Integrations  
APPROVED

mohammad  
10/12/2021 8:49:29 AM



#28 Decachlorobiphenyl

R.T.: 11.495 min  
Delta R.T.: 0.003 min  
Response: 26320216  
Conc: 21.75 ng/ml