

Data Path : Z:\pestpcbsrv\HPCHEM1\ECD_L\Data\PL100821\
 Data File : PL070192.D
 Signal(s) : Signal #1: ECD1A.ch Signal #2: ECD2B.ch
 Acq On : 08 Oct 2021 13:04
 Operator : AR\AJ
 Sample : M4087-10MS
 Misc :
 ALS Vial : 10 Sample Multiplier: 1

Instrument :
 ECD_L
ClientSampleId :
 WC-20211005-ROCKMS

Manual Integrations
APPROVED
 mohammad
 10/12/2021 8:49:31 AM

Integration File signal 1: autoint1.e
 Integration File signal 2: autoint2.e
 Quant Time: Oct 09 01:10:44 2021
 Quant Method : Z:\pestpcbsrv\HPCHEM1\ECD_L\methods\PL092821.M
 Quant Title : GC Extractables
 QLast Update : Wed Sep 29 09:19:28 2021
 Response via : Initial Calibration
 Integrator: ChemStation

Volume Inj. : 1 µl
 Signal #1 Phase : ZB-MR2 Signal #2 Phase: ZB-MR1
 Signal #1 Info : 30M x 0.32mm x0.2 Signal #2 Info : 30M x 0.32mm x0.5µm

Compound	RT#1	RT#2	Resp#1	Resp#2	ng/ml	ng/ml

System Monitoring Compounds						
1) SA Tetrachlo...	4.628	5.566	9408568	26960422	18.803	20.384
2) SA Decachlor...	10.396	11.489	14170176	25315517	20.478	20.919
Target Compounds						
2) A alpha-BHC	5.335	6.147	40756353	122.8E6	55.060	62.788
3) MA gamma-BHC...	5.759	6.543	38612550	112.5E6	55.299	61.405
4) MA Heptachlor	6.168	7.193	40217892	116.4E6	52.795	62.399
5) MB Aldrin	6.493	7.564	37928048	105.8E6	52.546	61.404
6) B beta-BHC	6.138	6.798	18740139	49623165	55.818m	57.711
7) B delta-BHC	6.400	7.066	36316965	110.5E6	52.532	57.077
8) B Heptachlo...	7.070	8.031	37304312	96854514	53.198	62.493
9) A Endosulfan I	7.473	8.437	35469682	91032442	53.075	61.874
10) B gamma-Chl...	7.347	8.301	38181335	98426673	52.721	61.537
11) B alpha-Chl...	7.417	8.381	38321390	96732133	52.616	61.333
12) B 4,4'-DDE	7.630	8.569	35034909	97438000	55.046	62.910
13) MA Dieldrin	7.759	8.726	36617212	93770003	53.294	61.428
14) MA Endrin	8.050	8.966	34494276	79475113	54.586	63.270
15) B Endosulfa...	8.361	9.200	33665993	78123140	53.069	65.378
16) A 4,4'-DDD	8.216	9.109	31043261	74842383	55.351	63.359
17) MA 4,4'-DDT	8.476	9.426	33657726	83106998	55.022	63.594
18) B Endrin al...	8.549	9.334	27309279	61003574	55.119	63.247
19) B Endosulfa...	8.780	9.572	34701355	74040734	52.598	60.503
20) A Methoxychlor	9.071	9.912	20673345	40570222	55.365	62.692
21) B Endrin ke...	9.300	10.071	41039213	81296712	53.707	60.776
22) Mirex	9.485	10.537	32582707	56105767	49.398	56.953

(f)=RT Delta > 1/2 Window (#)=Amounts differ by > 25% (m)=manual int.

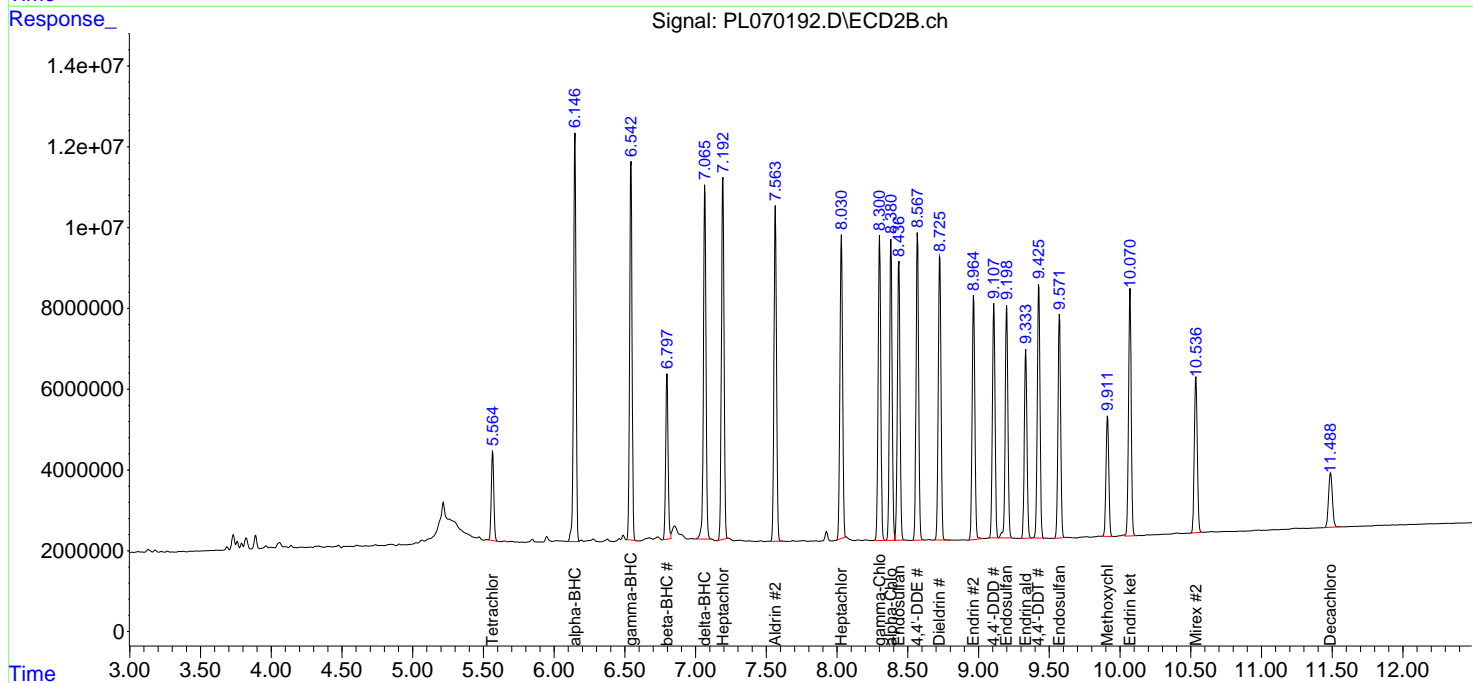
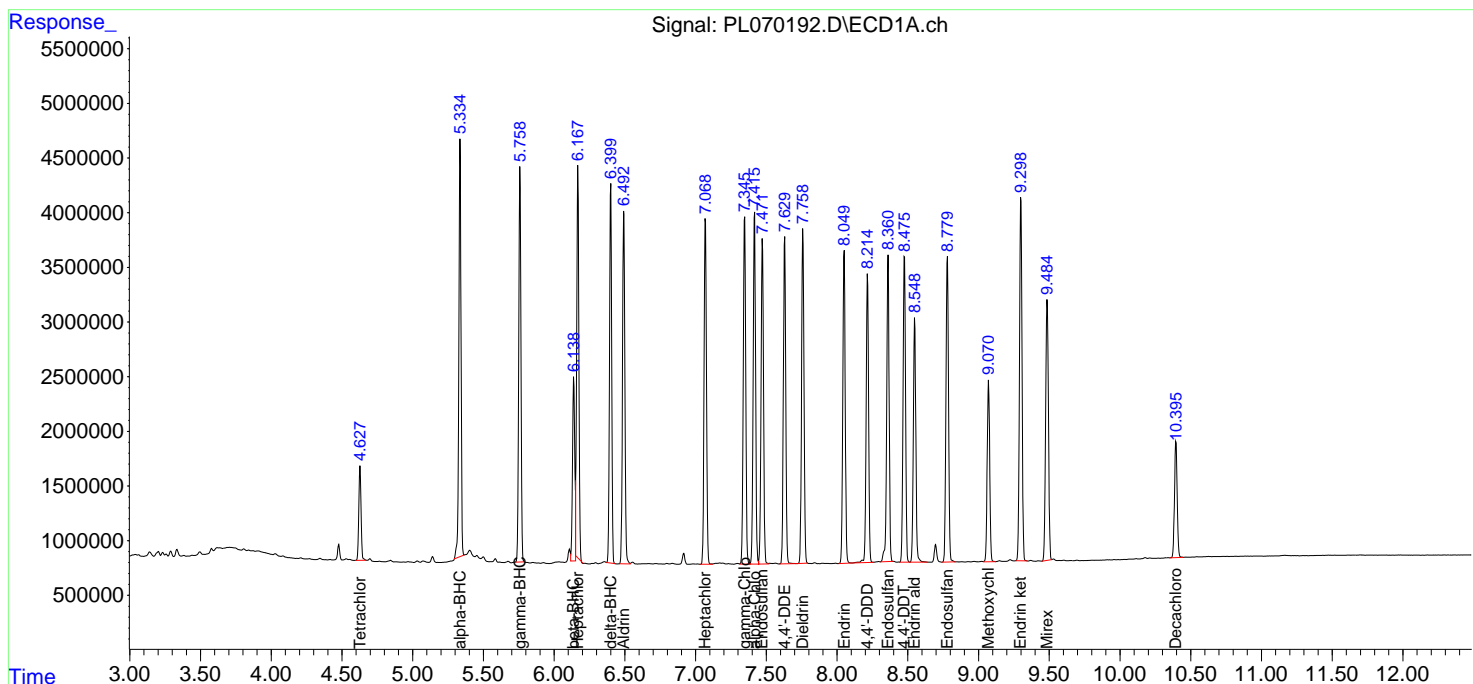
Data Path : Z:\pestpcbsrv\HPCHEM1\ECD_L\Data\PL100821\
 Data File : PL070192.D
 Signal(s) : Signal #1: ECD1A.ch Signal #2: ECD2B.ch
 Acq On : 08 Oct 2021 13:04
 Operator : AR\AJ
 Sample : M4087-10MS
 Misc :
 ALS Vial : 10 Sample Multiplier: 1

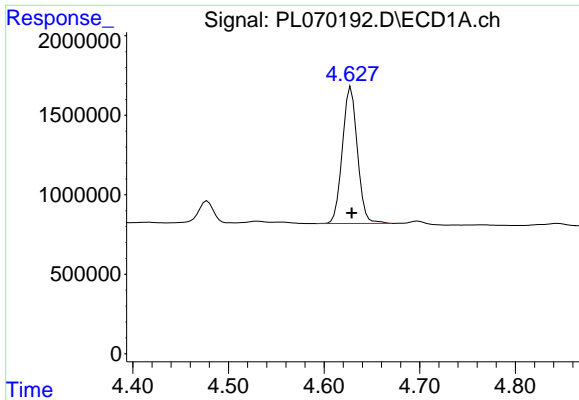
Instrument :
 ECD_L
 Client Sampled :
 WC-20211005-ROCKMS

Manual Integrations
APPROVED
 mohammad
 10/12/2021 8:49:31 AM

Integration File signal 1: autoint1.e
 Integration File signal 2: autoint2.e
 Quant Time: Oct 09 01:10:44 2021
 Quant Method : Z:\pestpcbsrv\HPCHEM1\ECD_L\methods\PL092821.M
 Quant Title : GC Extractables
 QLast Update : Wed Sep 29 09:19:28 2021
 Response via : Initial Calibration
 Integrator: ChemStation

Volume Inj. : 1 µl
 Signal #1 Phase : ZB-MR2 Signal #2 Phase: ZB-MR1
 Signal #1 Info : 30M x 0.32mm x0.2 Signal #2 Info : 30M x 0.32mm x0.5µm

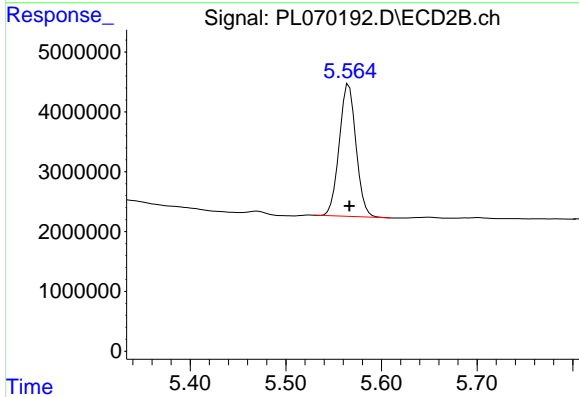




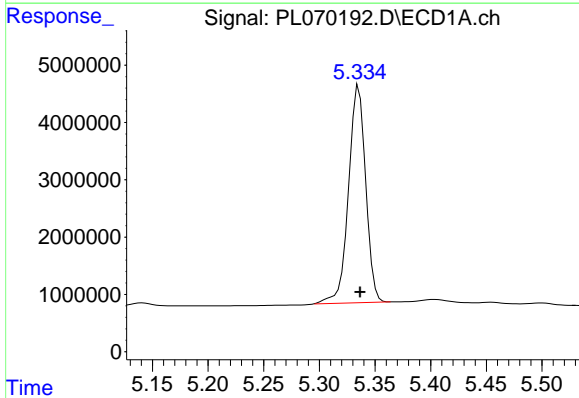
#1 Tetrachloro-m-xylene
 R.T.: 4.628 min
 Delta R.T.: 0.000 min
 Response: 9408568
 Conc: 18.80 ng/ml

Instrument :
 ECD_L
 ClientSampleId :
 WC-20211005-ROCKMS

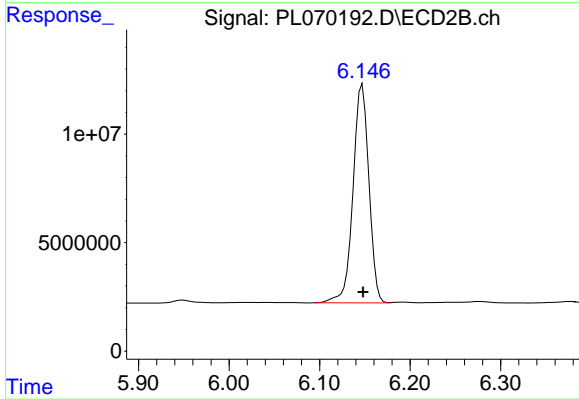
Manual Integrations
 APPROVED
 mohammad
 10/12/2021 8:49:31 AM



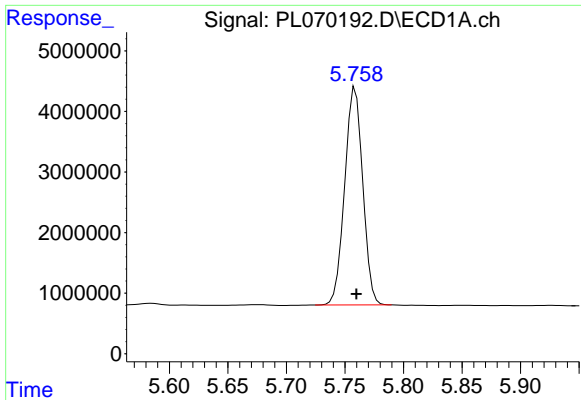
#1 Tetrachloro-m-xylene
 R.T.: 5.566 min
 Delta R.T.: 0.000 min
 Response: 26960422
 Conc: 20.38 ng/ml



#2 alpha-BHC
 R.T.: 5.335 min
 Delta R.T.: 0.000 min
 Response: 40756353
 Conc: 55.06 ng/ml



#2 alpha-BHC
 R.T.: 6.147 min
 Delta R.T.: 0.000 min
 Response: 122810381
 Conc: 62.79 ng/ml

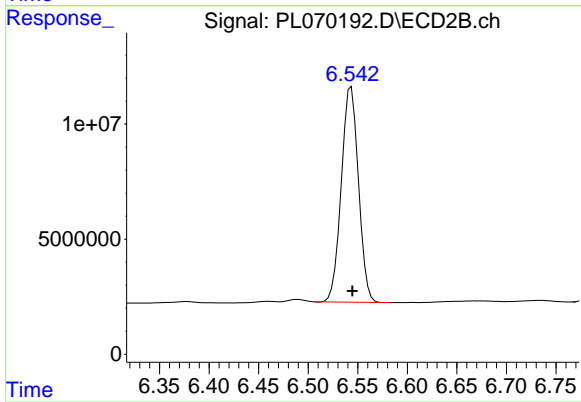


#3 gamma-BHC (Lindane)
 R.T.: 5.759 min
 Delta R.T.: 0.000 min
 Response: 38612550
 Conc: 55.30 ng/ml

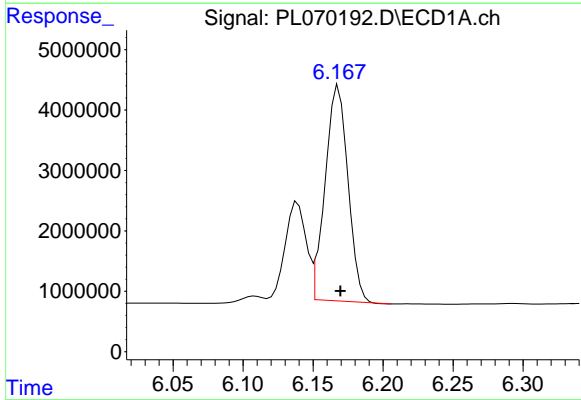
Instrument :
 ECD_L
 ClientSampleId :
 WC-20211005-ROCKMS

Manual Integrations
 APPROVED

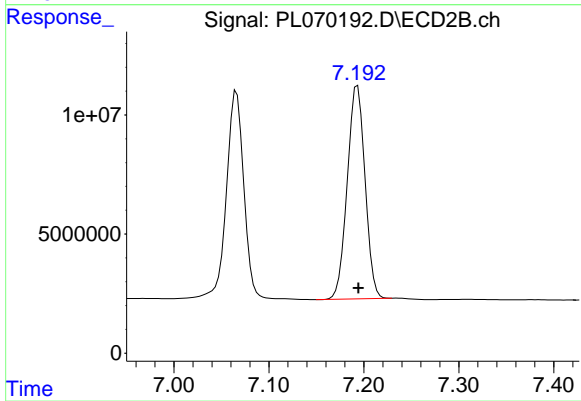
mohammad
 10/12/2021 8:49:31 AM



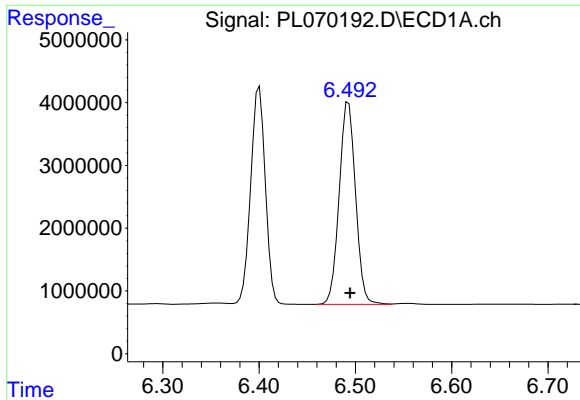
#3 gamma-BHC (Lindane)
 R.T.: 6.543 min
 Delta R.T.: -0.001 min
 Response: 112503017
 Conc: 61.41 ng/ml



#4 Heptachlor
 R.T.: 6.168 min
 Delta R.T.: -0.001 min
 Response: 40217892
 Conc: 52.80 ng/ml



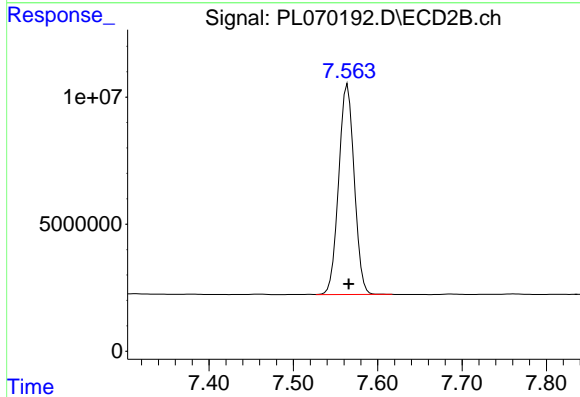
#4 Heptachlor
 R.T.: 7.193 min
 Delta R.T.: 0.000 min
 Response: 116371694
 Conc: 62.40 ng/ml



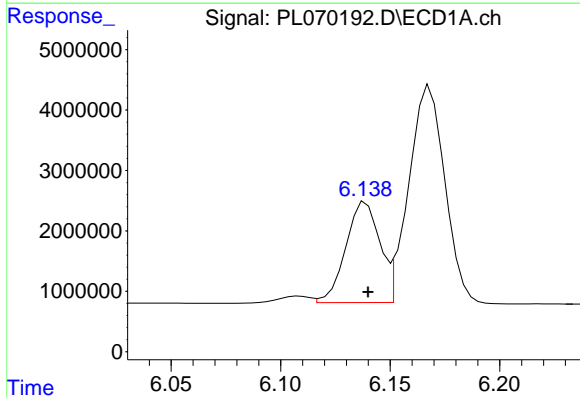
#5 Aldrin
 R.T.: 6.493 min
 Delta R.T.: -0.002 min
 Response: 37928048
 Conc: 52.55 ng/ml

Instrument :
 ECD_L
ClientSampled :
 WC-20211005-ROCKMS

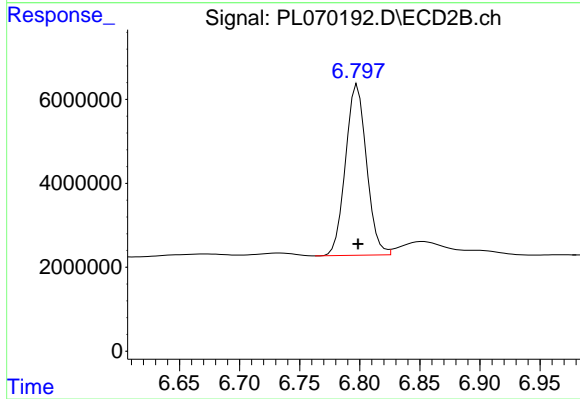
Manual Integrations
APPROVED
 mohammad
 10/12/2021 8:49:31 AM



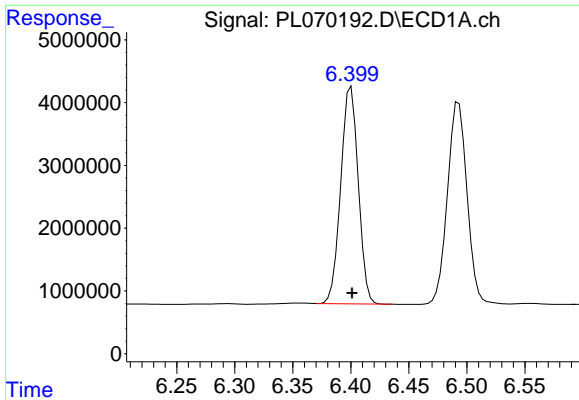
#5 Aldrin
 R.T.: 7.564 min
 Delta R.T.: -0.001 min
 Response: 105802256
 Conc: 61.40 ng/ml



#6 beta-BHC
 R.T.: 6.138 min
 Delta R.T.: -0.002 min
 Response: 18740139
 Conc: 55.82 ng/ml m



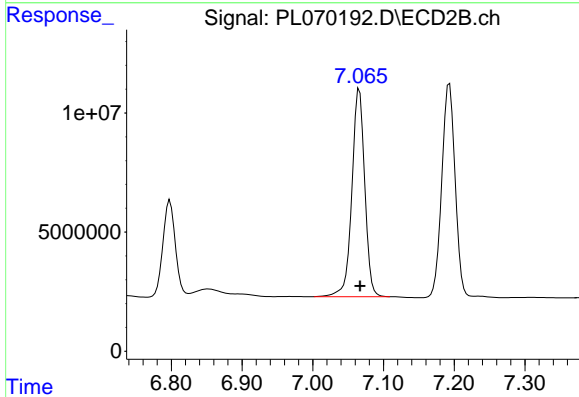
#6 beta-BHC
 R.T.: 6.798 min
 Delta R.T.: 0.000 min
 Response: 49623165
 Conc: 57.71 ng/ml



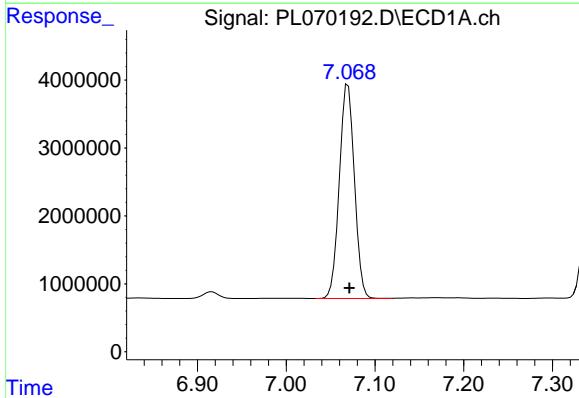
#7 delta-BHC
 R.T.: 6.400 min
 Delta R.T.: 0.000 min
 Response: 36316965
 Conc: 52.53 ng/ml

Instrument :
 ECD_L
ClientSampled :
 WC-20211005-ROCKMS

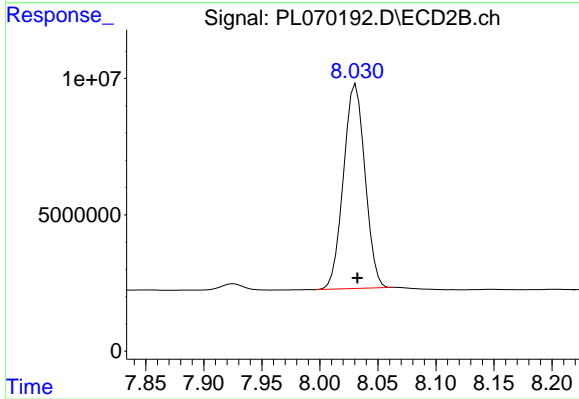
Manual Integrations
APPROVED
 mohammad
 10/12/2021 8:49:31 AM



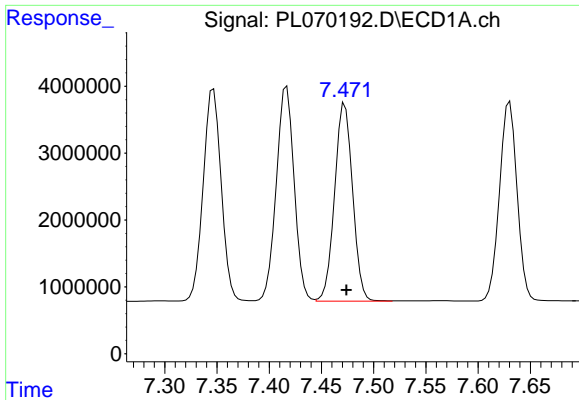
#7 delta-BHC
 R.T.: 7.066 min
 Delta R.T.: 0.000 min
 Response: 110478008
 Conc: 57.08 ng/ml



#8 Heptachlor epoxide
 R.T.: 7.070 min
 Delta R.T.: -0.002 min
 Response: 37304312
 Conc: 53.20 ng/ml



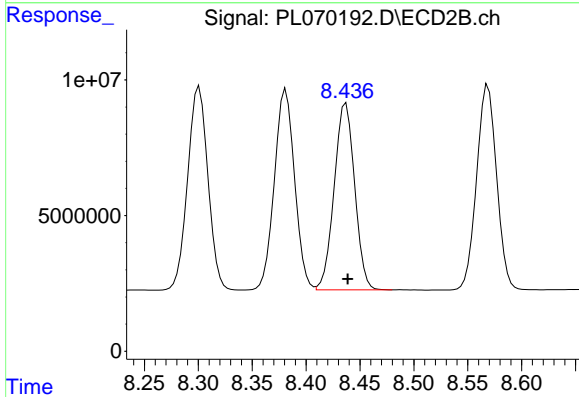
#8 Heptachlor epoxide
 R.T.: 8.031 min
 Delta R.T.: -0.001 min
 Response: 96854514
 Conc: 62.49 ng/ml



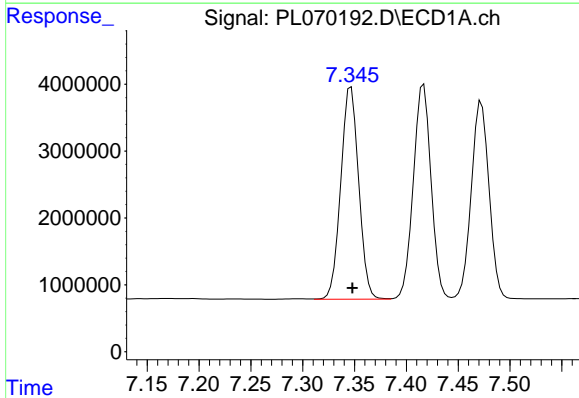
#9 Endosulfan I
 R.T.: 7.473 min
 Delta R.T.: -0.001 min
 Response: 35469682
 Conc: 53.08 ng/ml

Instrument :
 ECD_L
ClientSampled :
 WC-20211005-ROCKMS

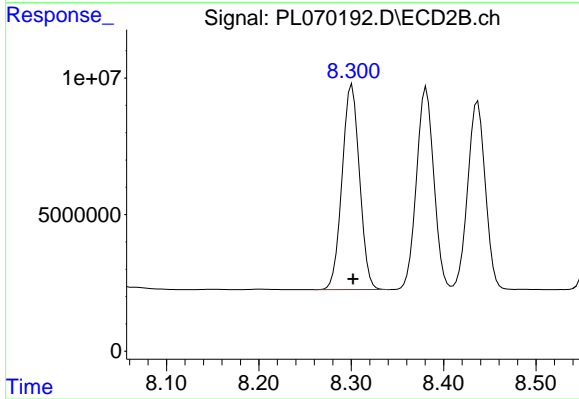
Manual Integrations
APPROVED
 mohammad
 10/12/2021 8:49:31 AM



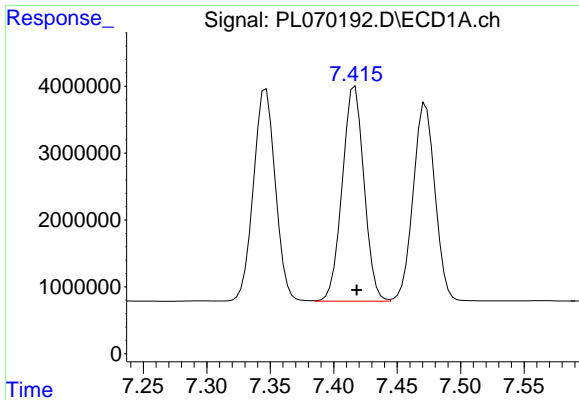
#9 Endosulfan I
 R.T.: 8.437 min
 Delta R.T.: -0.002 min
 Response: 91032442
 Conc: 61.87 ng/ml



#10 gamma-Chlordane
 R.T.: 7.347 min
 Delta R.T.: -0.002 min
 Response: 38181335
 Conc: 52.72 ng/ml



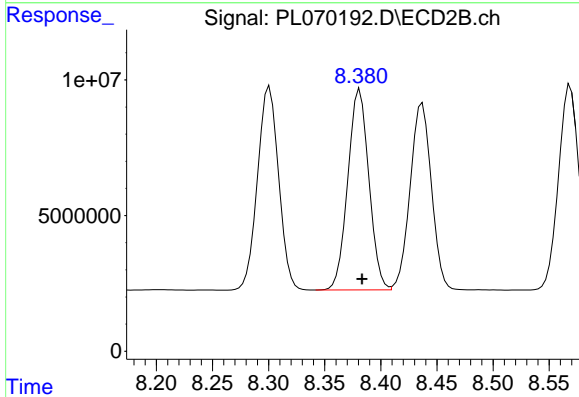
#10 gamma-Chlordane
 R.T.: 8.301 min
 Delta R.T.: -0.001 min
 Response: 98426673
 Conc: 61.54 ng/ml



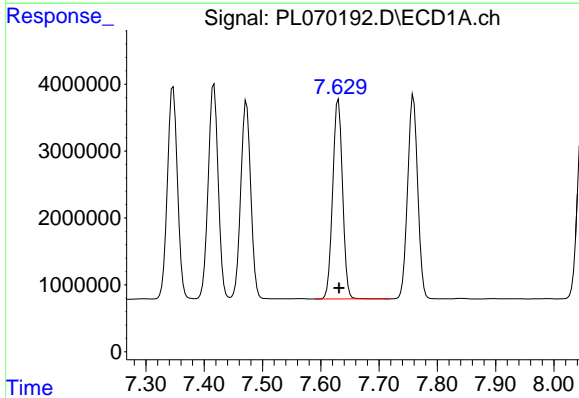
#11 alpha-Chlordane
 R.T.: 7.417 min
 Delta R.T.: -0.002 min
 Response: 38321390
 Conc: 52.62 ng/ml

Instrument :
 ECD_L
 ClientSampleId :
 WC-20211005-ROCKMS

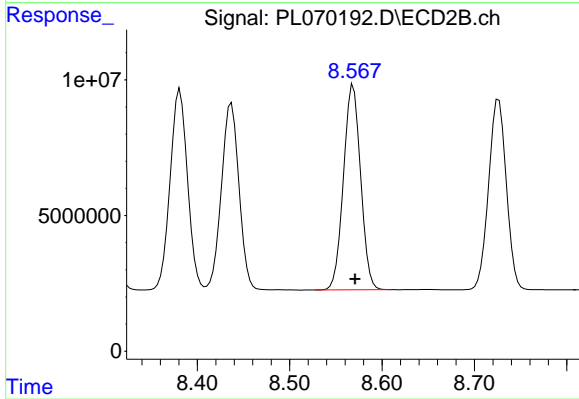
Manual Integrations
 APPROVED
 mohammad
 10/12/2021 8:49:31 AM



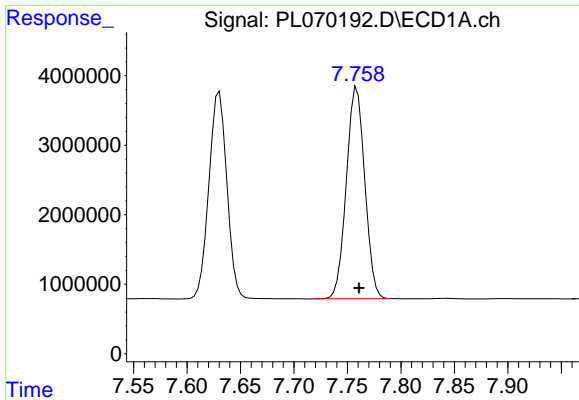
#11 alpha-Chlordane
 R.T.: 8.381 min
 Delta R.T.: -0.002 min
 Response: 96732133
 Conc: 61.33 ng/ml



#12 4,4'-DDE
 R.T.: 7.630 min
 Delta R.T.: -0.001 min
 Response: 35034909
 Conc: 55.05 ng/ml



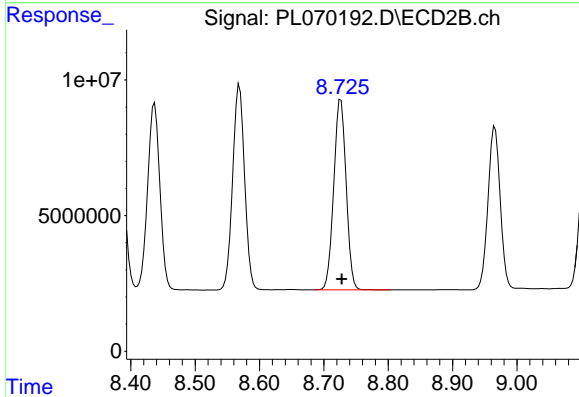
#12 4,4'-DDE
 R.T.: 8.569 min
 Delta R.T.: -0.002 min
 Response: 97438000
 Conc: 62.91 ng/ml



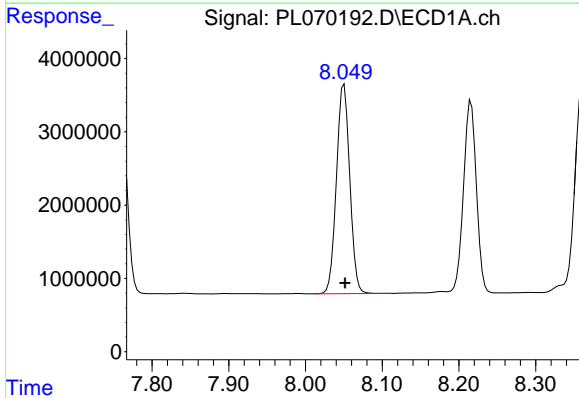
#13 Dieldrin
 R.T.: 7.759 min
 Delta R.T.: -0.002 min
 Response: 36617212
 Conc: 53.29 ng/ml

Instrument :
 ECD_L
 ClientSampleId :
 WC-20211005-ROCKMS

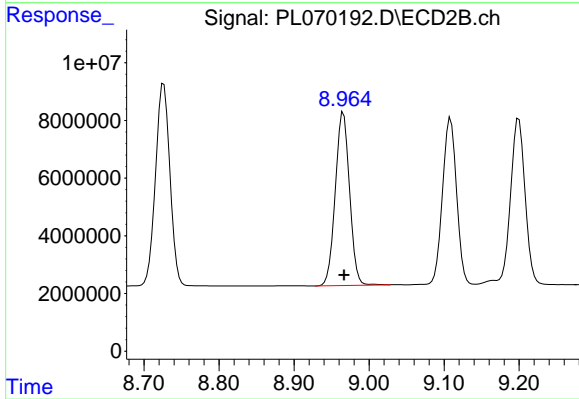
Manual Integrations
APPROVED
 mohammad
 10/12/2021 8:49:31 AM



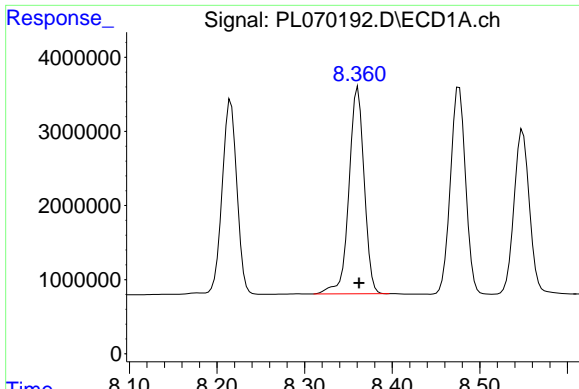
#13 Dieldrin
 R.T.: 8.726 min
 Delta R.T.: -0.001 min
 Response: 93770003
 Conc: 61.43 ng/ml



#14 Endrin
 R.T.: 8.050 min
 Delta R.T.: -0.001 min
 Response: 34494276
 Conc: 54.59 ng/ml



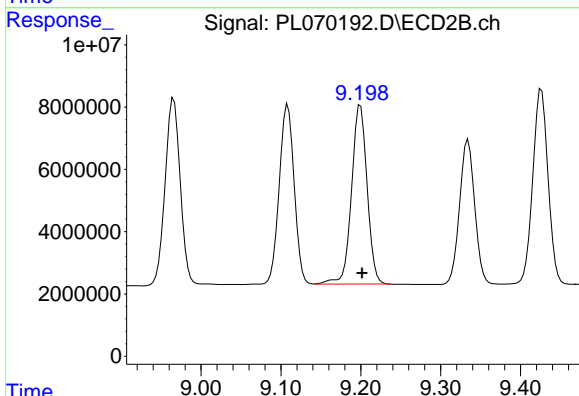
#14 Endrin
 R.T.: 8.966 min
 Delta R.T.: -0.001 min
 Response: 79475113
 Conc: 63.27 ng/ml



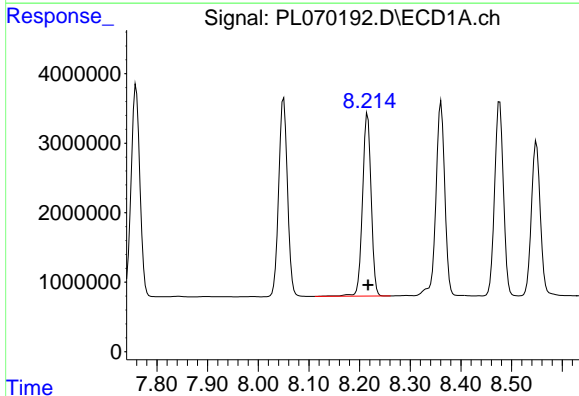
#15 Endosulfan II
 R.T.: 8.361 min
 Delta R.T.: -0.001 min
 Response: 33665993
 Conc: 53.07 ng/ml

Instrument :
 ECD_L
ClientSampled :
 WC-20211005-ROCKMS

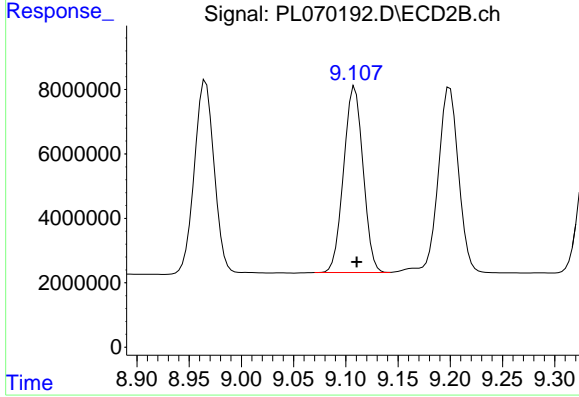
Manual Integrations
APPROVED
 mohammad
 10/12/2021 8:49:31 AM



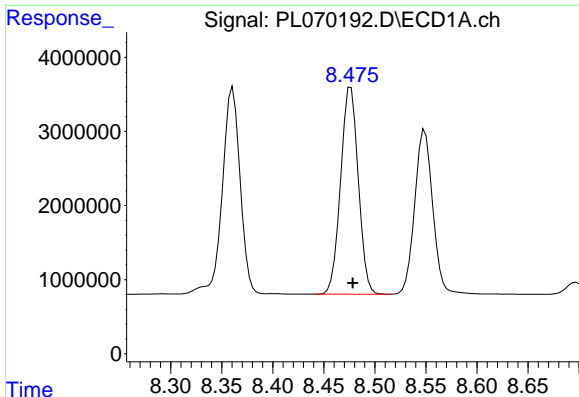
#15 Endosulfan II
 R.T.: 9.200 min
 Delta R.T.: -0.002 min
 Response: 78123140
 Conc: 65.38 ng/ml



#16 4,4'-DDD
 R.T.: 8.216 min
 Delta R.T.: -0.001 min
 Response: 31043261
 Conc: 55.35 ng/ml



#16 4,4'-DDD
 R.T.: 9.109 min
 Delta R.T.: -0.002 min
 Response: 74842383
 Conc: 63.36 ng/ml



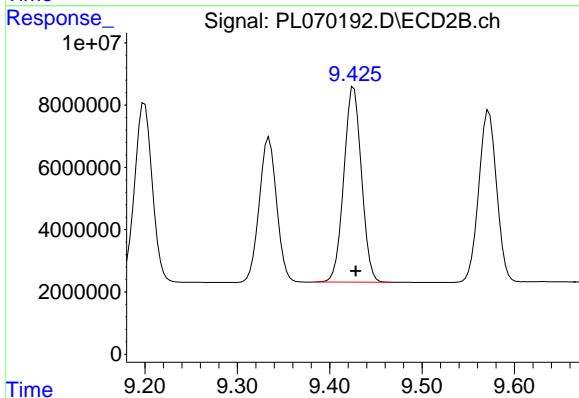
#17 4,4'-DDT

R.T.: 8.476 min
 Delta R.T.: -0.002 min
 Response: 33657726
 Conc: 55.02 ng/ml

Instrument :
 ECD_L
 ClientSampleId :
 WC-20211005-ROCKMS

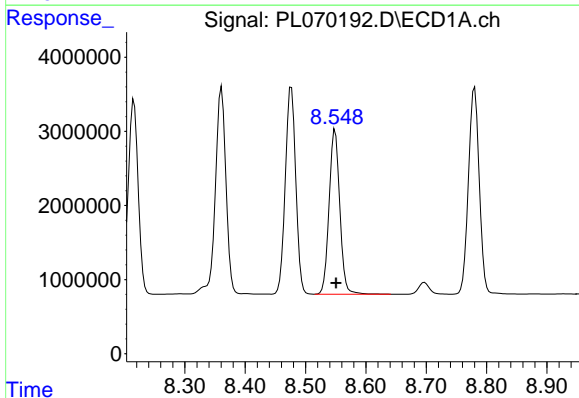
Manual Integrations
 APPROVED

mohammad
 10/12/2021 8:49:31 AM



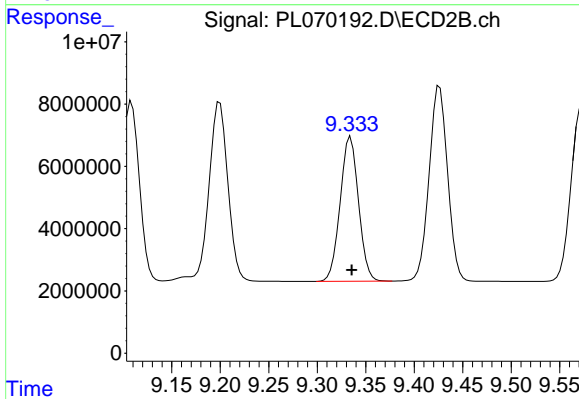
#17 4,4'-DDT

R.T.: 9.426 min
 Delta R.T.: -0.002 min
 Response: 83106998
 Conc: 63.59 ng/ml



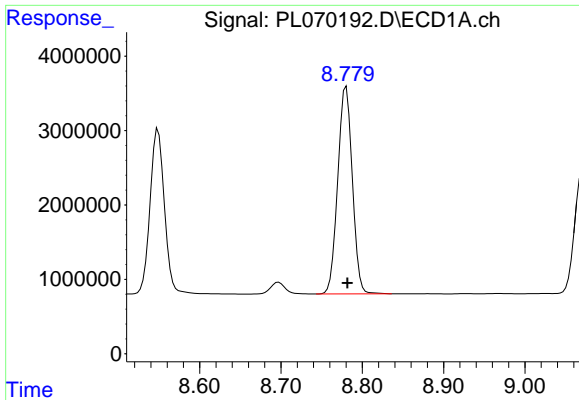
#18 Endrin aldehyde

R.T.: 8.549 min
 Delta R.T.: -0.002 min
 Response: 27309279
 Conc: 55.12 ng/ml



#18 Endrin aldehyde

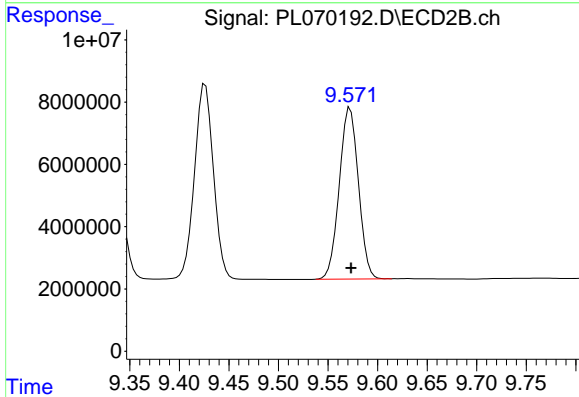
R.T.: 9.334 min
 Delta R.T.: -0.001 min
 Response: 61003574
 Conc: 63.25 ng/ml



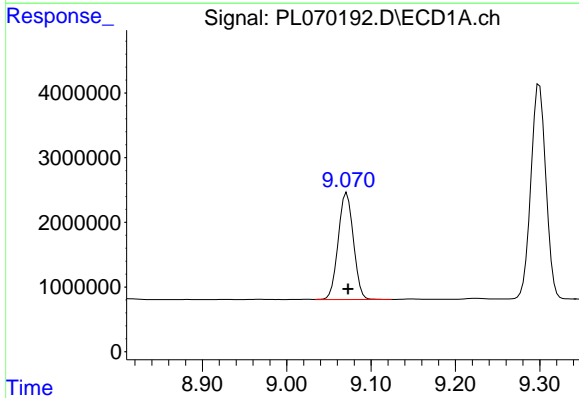
#19 Endosulfan Sulfate
 R.T.: 8.780 min
 Delta R.T.: -0.002 min
 Response: 34701355
 Conc: 52.60 ng/ml

Instrument :
 ECD_L
ClientSampleId :
 WC-20211005-ROCKMS

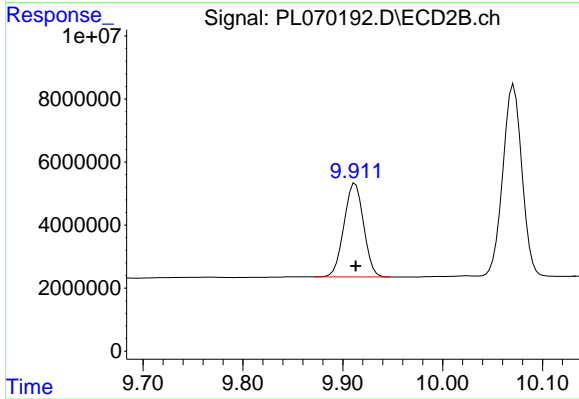
Manual Integrations
APPROVED
 mohammad
 10/12/2021 8:49:31 AM



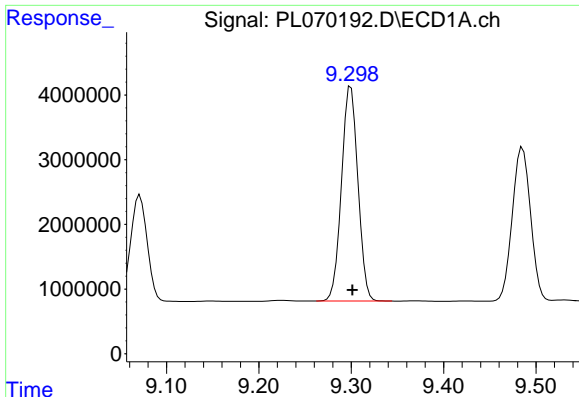
#19 Endosulfan Sulfate
 R.T.: 9.572 min
 Delta R.T.: -0.001 min
 Response: 74040734
 Conc: 60.50 ng/ml



#20 Methoxychlor
 R.T.: 9.071 min
 Delta R.T.: -0.002 min
 Response: 20673345
 Conc: 55.37 ng/ml



#20 Methoxychlor
 R.T.: 9.912 min
 Delta R.T.: 0.000 min
 Response: 40570222
 Conc: 62.69 ng/ml



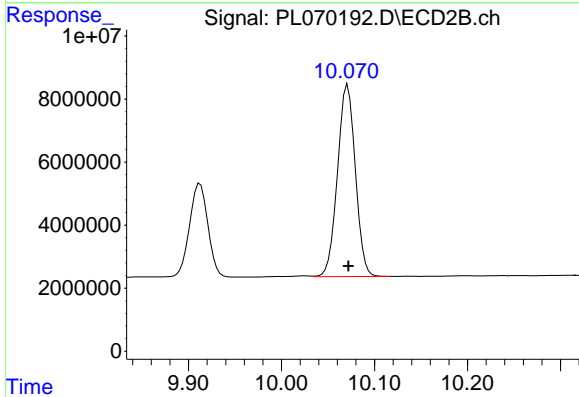
#21 Endrin ketone

R.T.: 9.300 min
 Delta R.T.: -0.002 min
 Response: 41039213
 Conc: 53.71 ng/ml

Instrument :
 ECD_L
 ClientSampleId :
 WC-20211005-ROCKMS

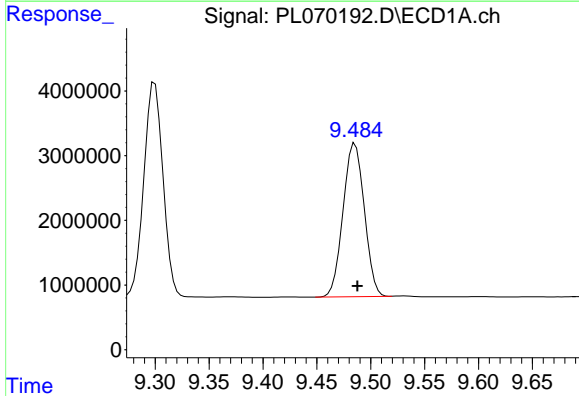
Manual Integrations
 APPROVED

mohammad
 10/12/2021 8:49:31 AM



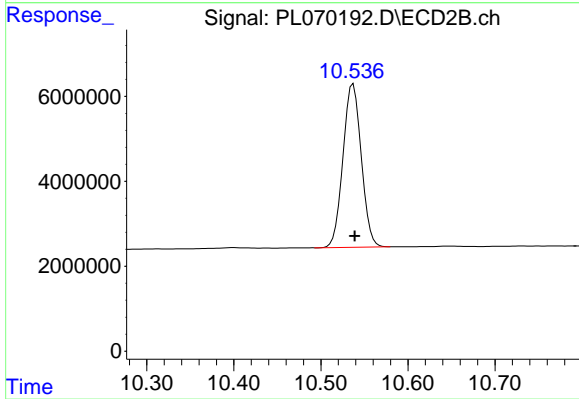
#21 Endrin ketone

R.T.: 10.071 min
 Delta R.T.: 0.000 min
 Response: 81296712
 Conc: 60.78 ng/ml



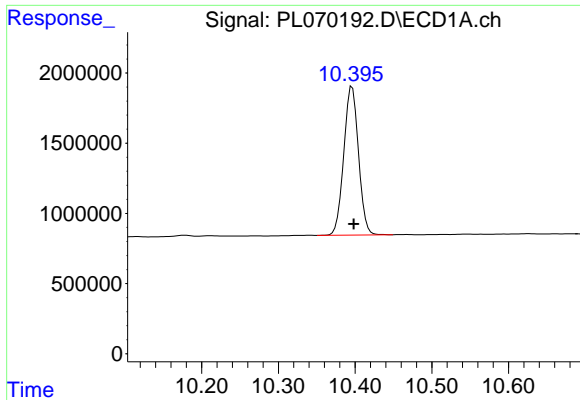
#22 Mirex

R.T.: 9.485 min
 Delta R.T.: -0.002 min
 Response: 32582707
 Conc: 49.40 ng/ml



#22 Mirex

R.T.: 10.537 min
 Delta R.T.: -0.002 min
 Response: 56105767
 Conc: 56.95 ng/ml



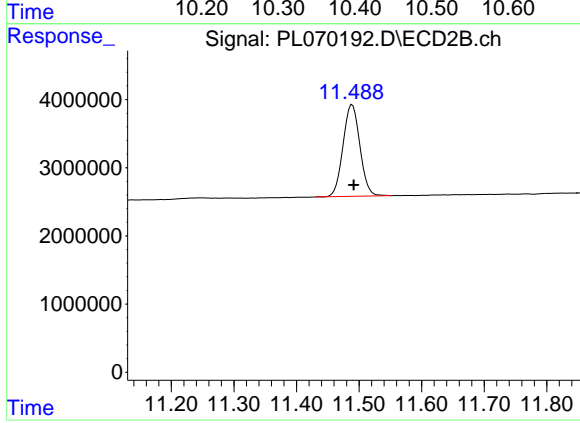
#28 Decachlorobiphenyl

R.T.: 10.396 min
Delta R.T.: -0.002 min
Response: 14170176
Conc: 20.48 ng/ml

Instrument :
ECD_L
ClientSampleId :
WC-20211005-ROCKMS

Manual Integrations
APPROVED

mohammad
10/12/2021 8:49:31 AM



#28 Decachlorobiphenyl

R.T.: 11.489 min
Delta R.T.: -0.003 min
Response: 25315517
Conc: 20.92 ng/ml