

Data Path : Z:\pestpcbsrv\HPCHEM1\ECD_L\Data\PL100821\
 Data File : PL070196.D
 Signal(s) : Signal #1: ECD1A.ch Signal #2: ECD2B.ch
 Acq On : 08 Oct 2021 14:11
 Operator : AR\AJ
 Sample : M4111-08
 Misc :
 ALS Vial : 14 Sample Multiplier: 1

Instrument :
 ECD_L
 ClientSampleId :
 GROWS-3

Integration File signal 1: autoint1.e
 Integration File signal 2: autoint2.e
 Quant Time: Oct 09 00:08:18 2021
 Quant Method : Z:\pestpcbsrv\HPCHEM1\ECD_L\methods\PL092821.M
 Quant Title : GC Extractables
 QLast Update : Wed Sep 29 09:19:28 2021
 Response via : Initial Calibration
 Integrator: ChemStation

Volume Inj. : 1 µl
 Signal #1 Phase : ZB-MR2 Signal #2 Phase: ZB-MR1
 Signal #1 Info : 30M x 0.32mm x0.2 Signal #2 Info : 30M x 0.32mm x0.5µm

Compound	RT#1	RT#2	Resp#1	Resp#2	ng/ml	ng/ml

System Monitoring Compounds						
1) SA Tetrachlo...	4.628	5.566	9881747	28237788	19.748	21.350
28) SA Decachlor...	10.394	11.489	14173344	25833062	20.482	21.347

Target Compounds

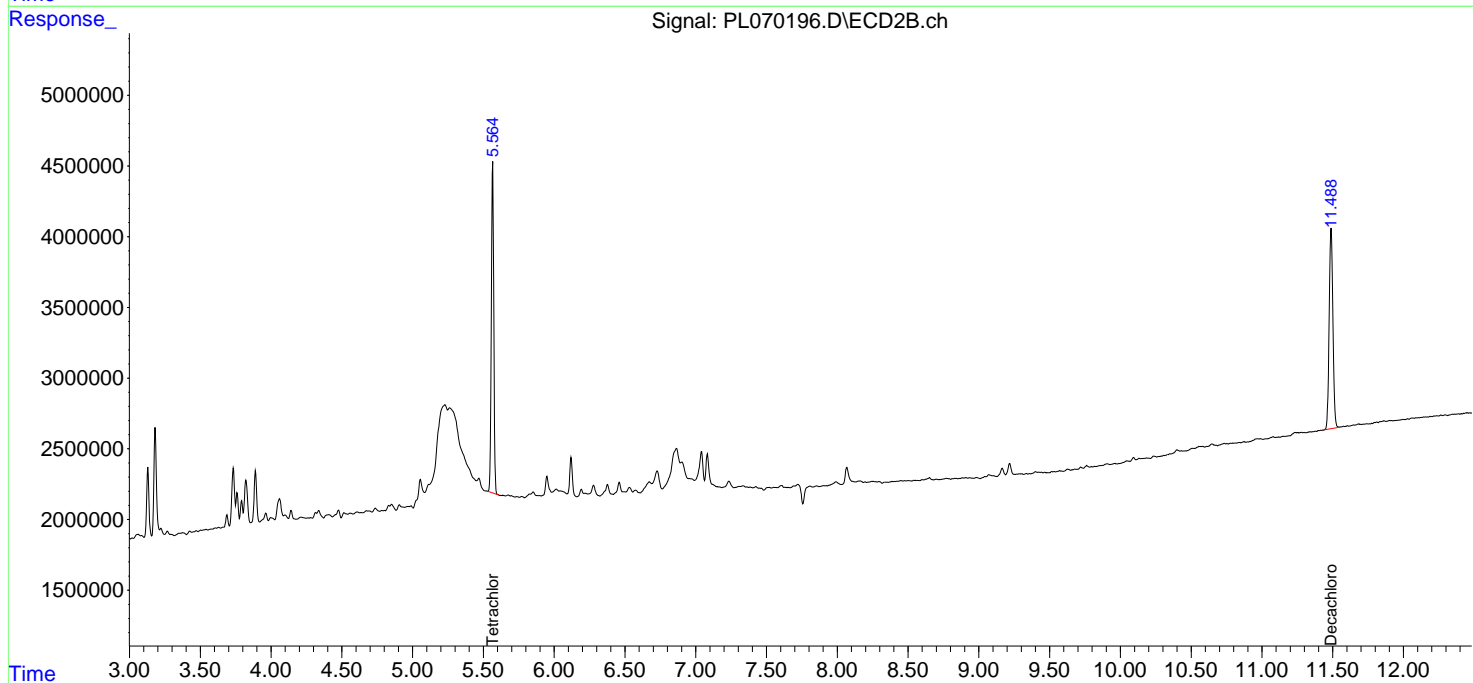
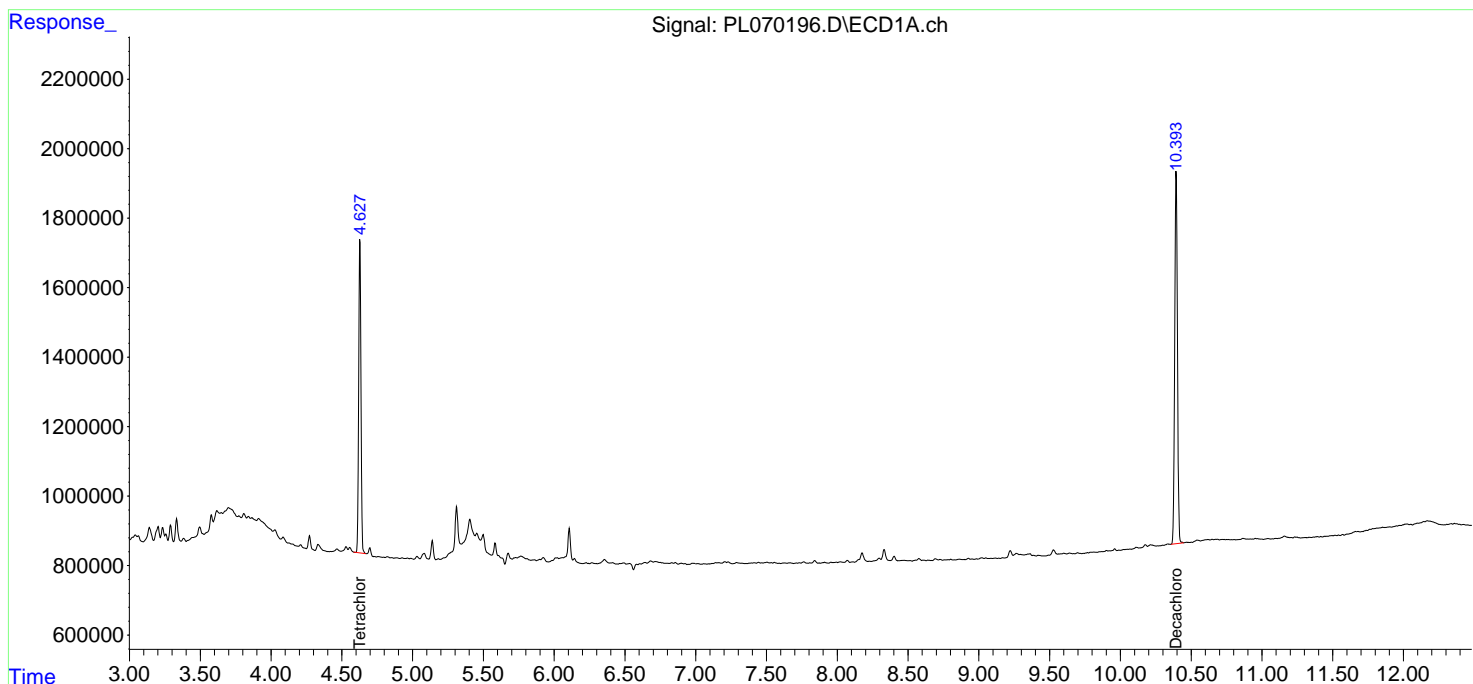
(f)=RT Delta > 1/2 Window (#)=Amounts differ by > 25% (m)=manual int.

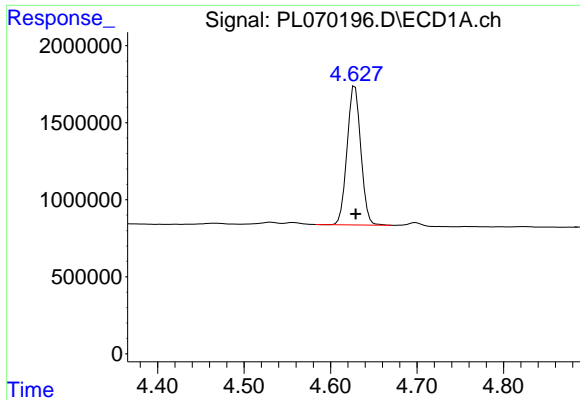
Data Path : Z:\pestpcbsrv\HPCHEM1\ECD_L\Data\PL100821\
 Data File : PL070196.D
 Signal(s) : Signal #1: ECD1A.ch Signal #2: ECD2B.ch
 Acq On : 08 Oct 2021 14:11
 Operator : AR\AJ
 Sample : M4111-08
 Misc :
 ALS Vial : 14 Sample Multiplier: 1

Instrument :
 ECD_L
 ClientSampleId :
 GROWS-3

Integration File signal 1: autoint1.e
 Integration File signal 2: autoint2.e
 Quant Time: Oct 09 00:08:18 2021
 Quant Method : Z:\pestpcbsrv\HPCHEM1\ECD_L\methods\PL092821.M
 Quant Title : GC Extractables
 QLast Update : Wed Sep 29 09:19:28 2021
 Response via : Initial Calibration
 Integrator: ChemStation

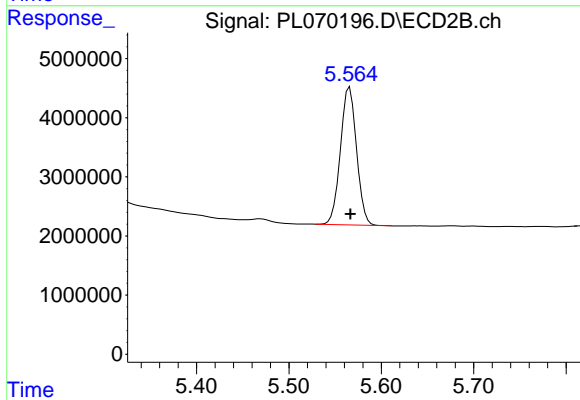
Volume Inj. : 1 µl
 Signal #1 Phase : ZB-MR2 Signal #2 Phase: ZB-MR1
 Signal #1 Info : 30M x 0.32mm x0.2 Signal #2 Info : 30M x 0.32mm x0.5µm



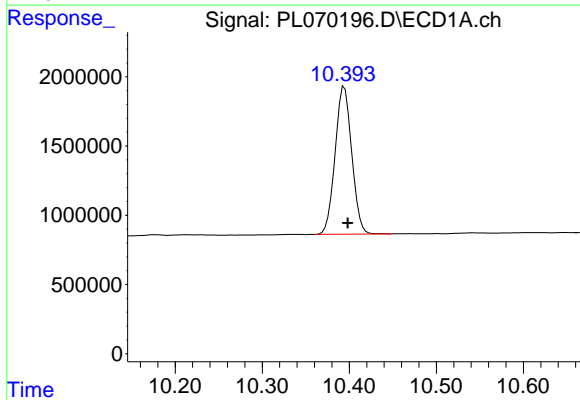


#1 Tetrachloro-m-xylene
 R.T.: 4.628 min
 Delta R.T.: 0.000 min
 Response: 9881747
 Conc: 19.75 ng/ml

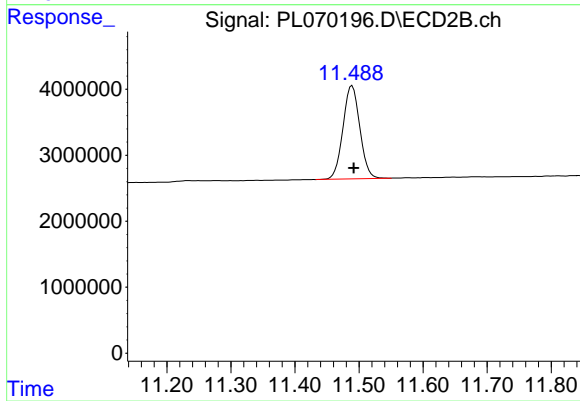
Instrument :
 ECD_L
 ClientSampleId :
 GROWS-3



#1 Tetrachloro-m-xylene
 R.T.: 5.566 min
 Delta R.T.: 0.000 min
 Response: 28237788
 Conc: 21.35 ng/ml



#28 Decachlorobiphenyl
 R.T.: 10.394 min
 Delta R.T.: -0.004 min
 Response: 14173344
 Conc: 20.48 ng/ml



#28 Decachlorobiphenyl
 R.T.: 11.489 min
 Delta R.T.: -0.002 min
 Response: 25833062
 Conc: 21.35 ng/ml