

Data Path : Z:\pestpcbsrv\HPCHEM1\ECD_L\Data\PL100821\
 Data File : PL070198.D
 Signal(s) : Signal #1: ECD1A.ch Signal #2: ECD2B.ch
 Acq On : 08 Oct 2021 14:44
 Operator : AR\AJ
 Sample : PB139736BS
 Misc :
 ALS Vial : 16 Sample Multiplier: 1

Instrument :
 ECD_L
 ClientSampleId :
 PB139736BS

Integration File signal 1: autoint1.e
 Integration File signal 2: autoint2.e
 Quant Time: Oct 09 00:08:40 2021
 Quant Method : Z:\pestpcbsrv\HPCHEM1\ECD_L\methods\PL092821.M
 Quant Title : GC Extractables
 QLast Update : Wed Sep 29 09:19:28 2021
 Response via : Initial Calibration
 Integrator: ChemStation

Volume Inj. : 1 µl
 Signal #1 Phase : ZB-MR2 Signal #2 Phase: ZB-MR1
 Signal #1 Info : 30M x 0.32mm x0.2 Signal #2 Info : 30M x 0.32mm x0.5µm

Compound	RT#1	RT#2	Resp#1	Resp#2	ng/ml	ng/ml

System Monitoring Compounds						
1) SA Tetrachlo...	4.628	5.566	9585240	28579442	19.156	21.608
28) SA Decachlor...	10.395	11.489	14508249	26168706	20.966	21.624
Target Compounds						
2) A alpha-BHC	5.335	6.147	33545169	105.0E6	45.318	53.675
3) MA gamma-BHC...	5.758	6.544	32685695	97637186	46.811	53.291
4) MA Heptachlor	6.168	7.193	35187134	101.4E6	46.191	54.363
5) MB Aldrin	6.493	7.564	31929708	91130738	44.236	52.889
6) B beta-BHC	6.139	6.798	16567425	45452288	49.347	52.860
7) B delta-BHC	6.400	7.066	30681938	92734967	44.381	47.910
8) B Heptachlo...	7.069	8.031	31645401	84732820	45.128	54.672
9) A Endosulfan I	7.472	8.437	30362120	79323874	45.432	53.916
10) B gamma-Chl...	7.346	8.301	32714320	86424896	45.172	54.034
11) B alpha-Chl...	7.416	8.381	32706735	84228760	44.907	53.406
12) B 4,4'-DDE	7.629	8.569	30048238	84959228	47.211	54.853
13) MA Dieldrin	7.758	8.727	31831319	82759802	46.329	54.215
14) MA Endrin	8.049	8.966	30192390	70414181	47.778	56.056
15) B Endosulfa...	8.360	9.200	30427409	71151239	47.964	59.544
16) A 4,4'-DDD	8.215	9.109	25925181	64230610	46.225	54.376
17) MA 4,4'-DDT	8.476	9.426	28994277	68975564	47.399	52.781
18) B Endrin al...	8.548	9.334	26517981	59580497	53.522	61.771
19) B Endosulfa...	8.779	9.572	31171768	67188661	47.248	54.903
20) A Methoxychlor	9.070	9.912	18186797	35076478	48.706	54.202
21) B Endrin ke...	9.298	10.071	36262267	73056756	47.456	54.616
22) Mirex	9.485	10.537	30206435	52520101	45.796	53.313

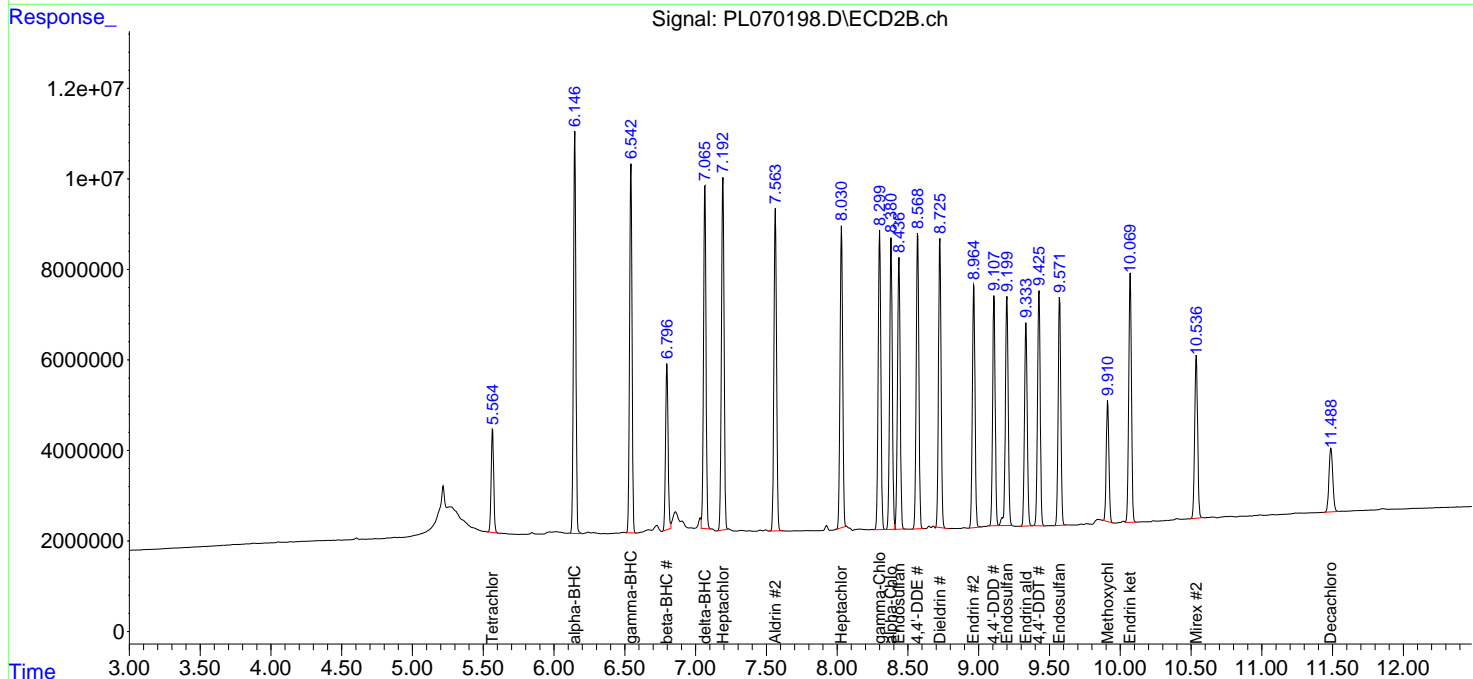
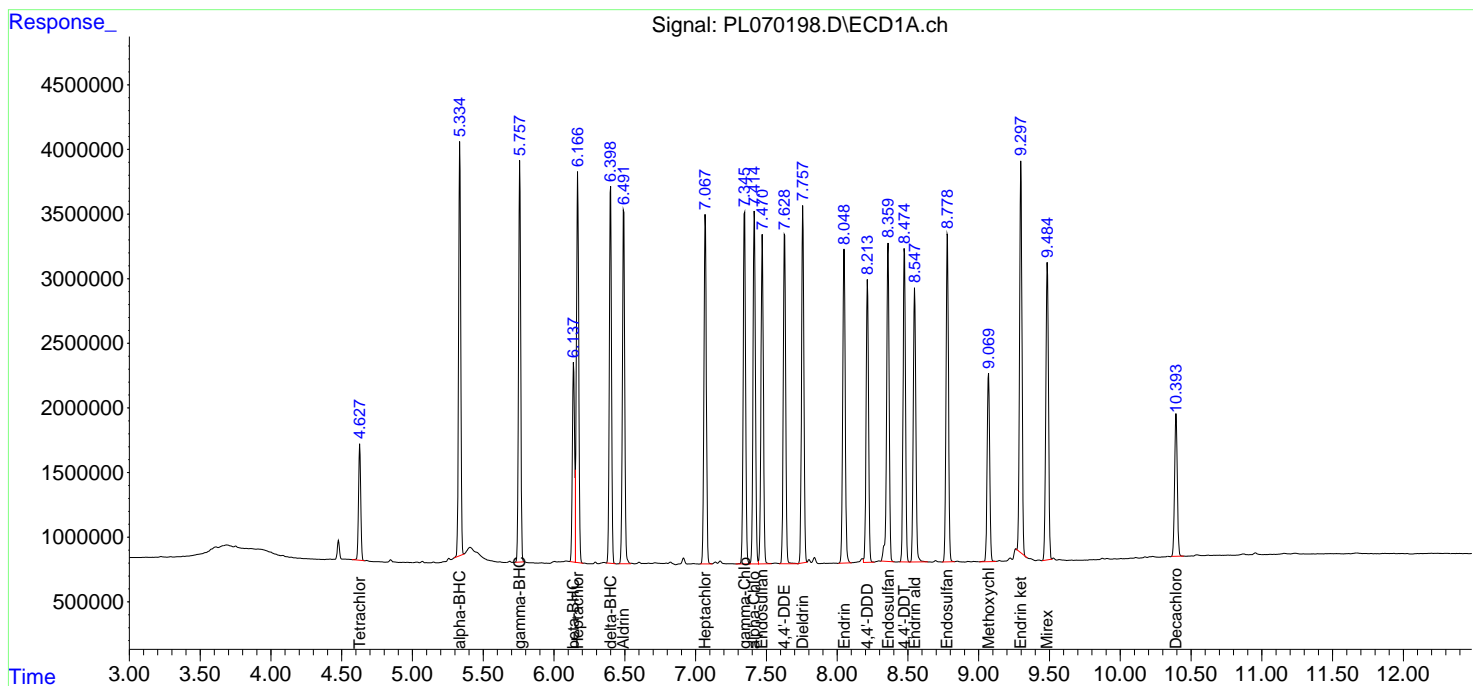
(f)=RT Delta > 1/2 Window (#)=Amounts differ by > 25% (m)=manual int.

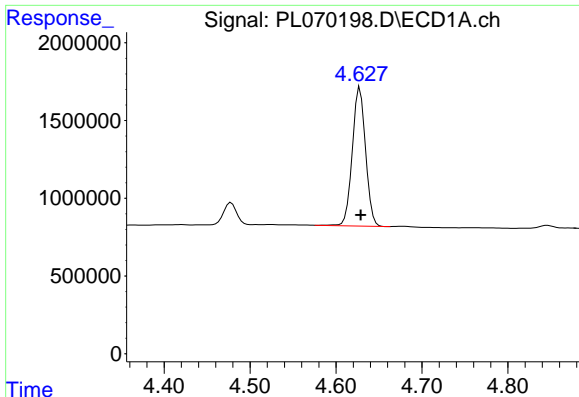
Data Path : Z:\pestpcbsrv\HPCHEM1\ECD_L\Data\PL100821\
 Data File : PL070198.D
 Signal(s) : Signal #1: ECD1A.ch Signal #2: ECD2B.ch
 Acq On : 08 Oct 2021 14:44
 Operator : AR\AJ
 Sample : PB139736BS
 Misc :
 ALS Vial : 16 Sample Multiplier: 1

Instrument :
 ECD_L
 Client Sampled :
 PB139736BS

Integration File signal 1: autoint1.e
 Integration File signal 2: autoint2.e
 Quant Time: Oct 09 00:08:40 2021
 Quant Method : Z:\pestpcbsrv\HPCHEM1\ECD_L\methods\PL092821.M
 Quant Title : GC Extractables
 QLast Update : Wed Sep 29 09:19:28 2021
 Response via : Initial Calibration
 Integrator: ChemStation

Volume Inj. : 1 µl
 Signal #1 Phase : ZB-MR2 Signal #2 Phase: ZB-MR1
 Signal #1 Info : 30M x 0.32mm x0.2 Signal #2 Info : 30M x 0.32mm x0.5µm

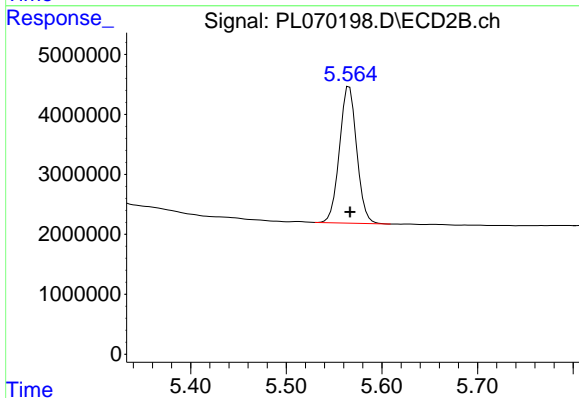




#1 Tetrachloro-m-xylene

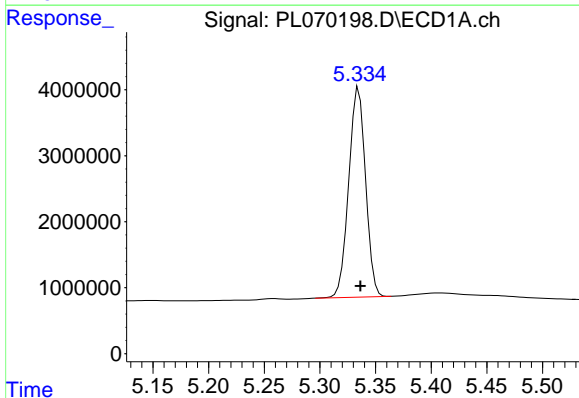
R.T.: 4.628 min
 Delta R.T.: -0.001 min
 Response: 9585240
 Conc: 19.16 ng/ml

Instrument :
 ECD_L
 ClientSampleId :
 PB139736BS



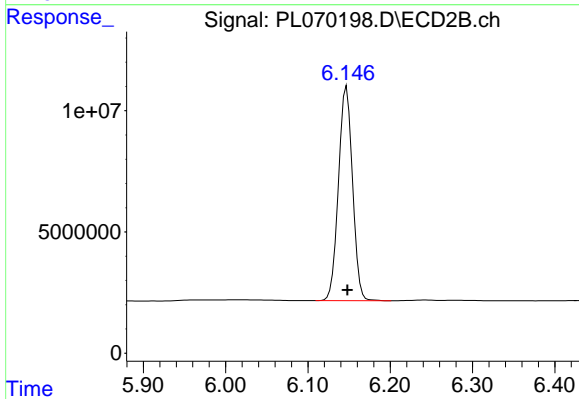
#1 Tetrachloro-m-xylene

R.T.: 5.566 min
 Delta R.T.: 0.000 min
 Response: 28579442
 Conc: 21.61 ng/ml



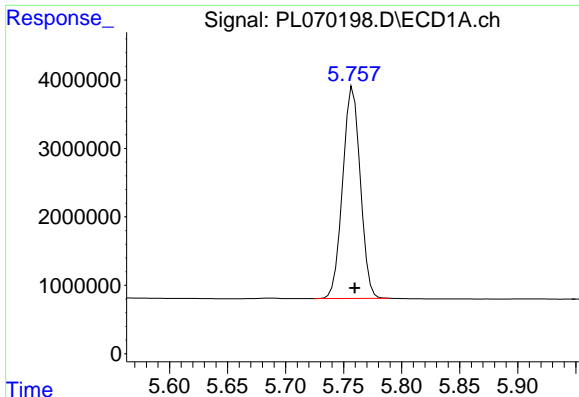
#2 alpha-BHC

R.T.: 5.335 min
 Delta R.T.: -0.001 min
 Response: 33545169
 Conc: 45.32 ng/ml



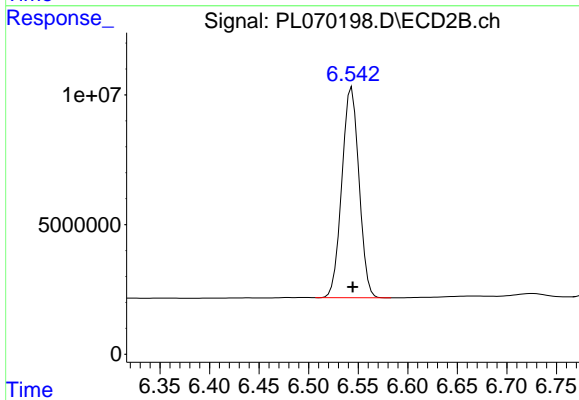
#2 alpha-BHC

R.T.: 6.147 min
 Delta R.T.: -0.001 min
 Response: 104985963
 Conc: 53.68 ng/ml

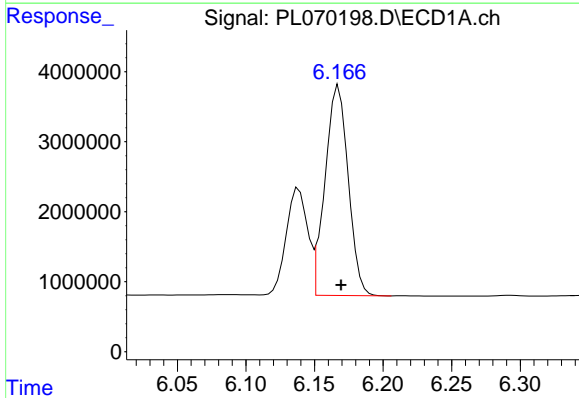


#3 gamma-BHC (Lindane)
 R.T.: 5.758 min
 Delta R.T.: -0.002 min
 Response: 32685695
 Conc: 46.81 ng/ml

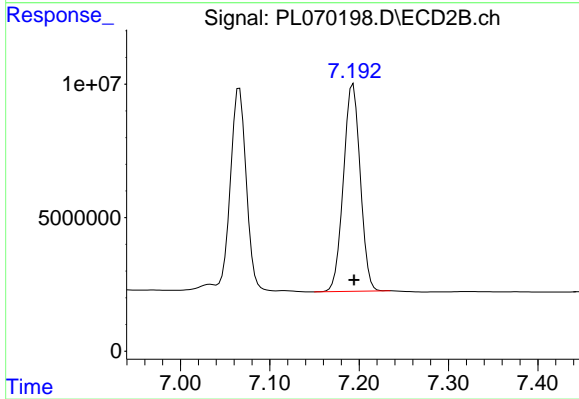
Instrument :
 ECD_L
 ClientSampleId :
 PB139736BS



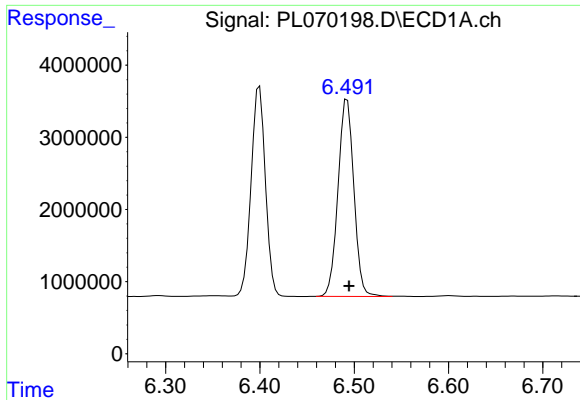
#3 gamma-BHC (Lindane)
 R.T.: 6.544 min
 Delta R.T.: -0.001 min
 Response: 97637186
 Conc: 53.29 ng/ml



#4 Heptachlor
 R.T.: 6.168 min
 Delta R.T.: -0.002 min
 Response: 35187134
 Conc: 46.19 ng/ml

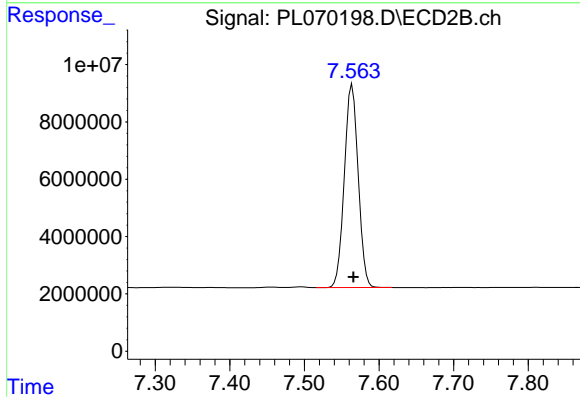


#4 Heptachlor
 R.T.: 7.193 min
 Delta R.T.: 0.000 min
 Response: 101384630
 Conc: 54.36 ng/ml

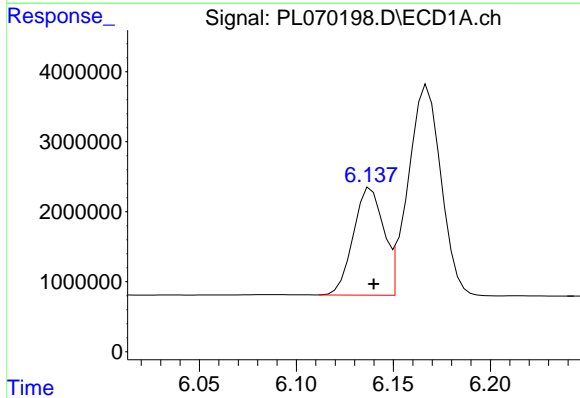


#5 Aldrin
 R.T.: 6.493 min
 Delta R.T.: -0.002 min
 Response: 31929708
 Conc: 44.24 ng/ml

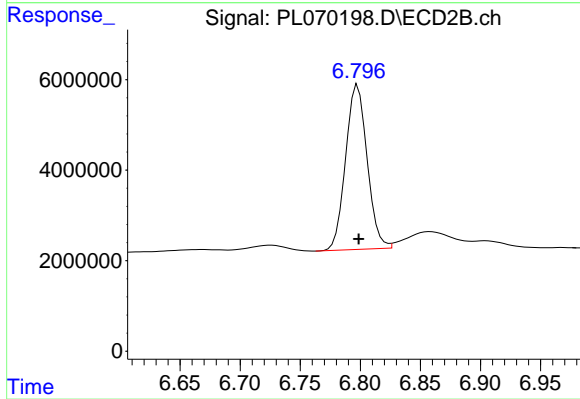
Instrument :
 ECD_L
 ClientSampleId :
 PB139736BS



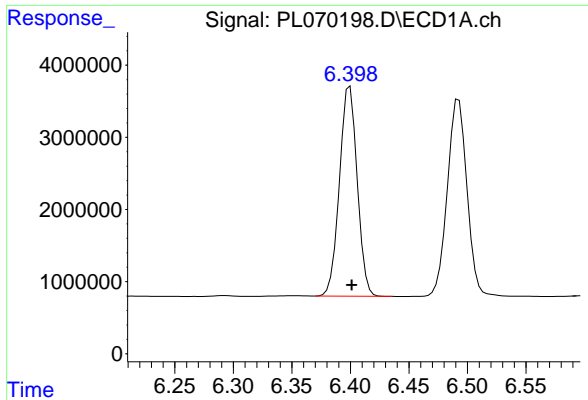
#5 Aldrin
 R.T.: 7.564 min
 Delta R.T.: -0.002 min
 Response: 91130738
 Conc: 52.89 ng/ml



#6 beta-BHC
 R.T.: 6.139 min
 Delta R.T.: -0.001 min
 Response: 16567425
 Conc: 49.35 ng/ml

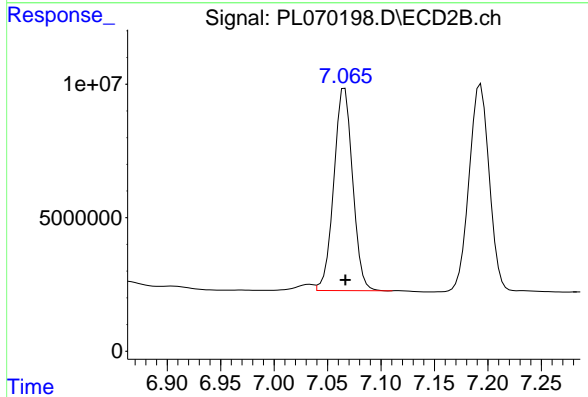


#6 beta-BHC
 R.T.: 6.798 min
 Delta R.T.: 0.000 min
 Response: 45452288
 Conc: 52.86 ng/ml

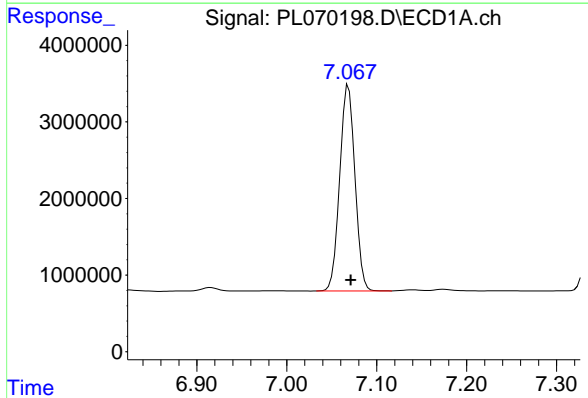


#7 delta-BHC
 R.T.: 6.400 min
 Delta R.T.: -0.002 min
 Response: 30681938
 Conc: 44.38 ng/ml

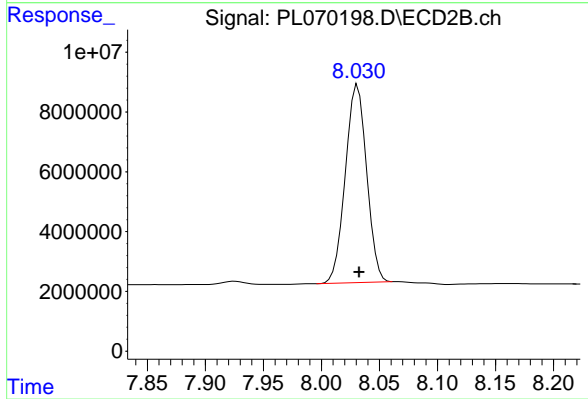
Instrument :
 ECD_L
 ClientSampleId :
 PB139736BS



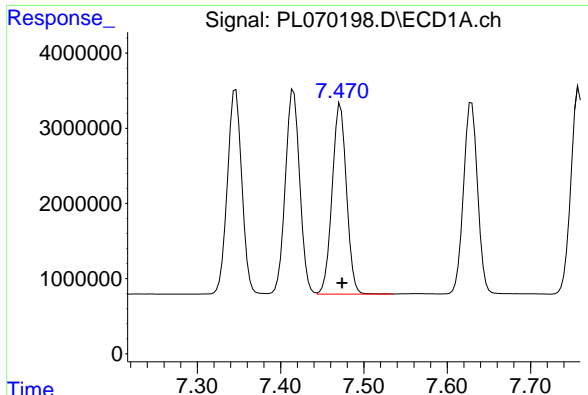
#7 delta-BHC
 R.T.: 7.066 min
 Delta R.T.: 0.000 min
 Response: 92734967
 Conc: 47.91 ng/ml



#8 Heptachlor epoxide
 R.T.: 7.069 min
 Delta R.T.: -0.002 min
 Response: 31645401
 Conc: 45.13 ng/ml

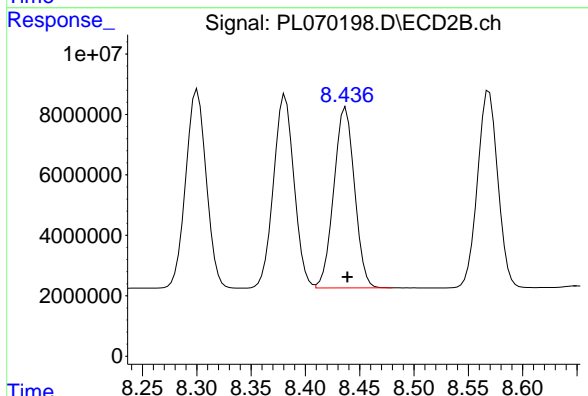


#8 Heptachlor epoxide
 R.T.: 8.031 min
 Delta R.T.: -0.001 min
 Response: 84732820
 Conc: 54.67 ng/ml

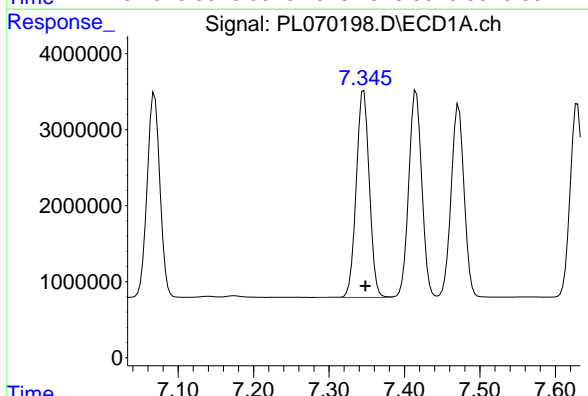


#9 Endosulfan I
 R.T.: 7.472 min
 Delta R.T.: -0.002 min
 Response: 30362120
 Conc: 45.43 ng/ml

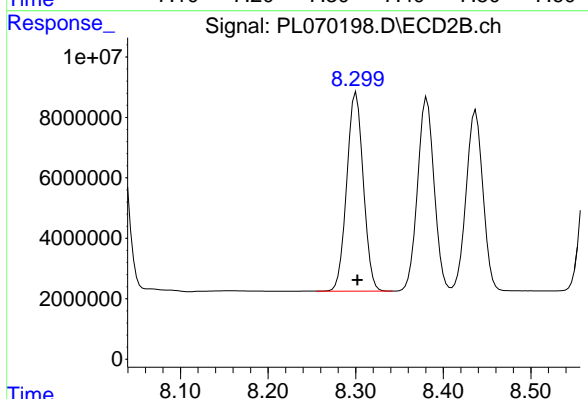
Instrument :
 ECD_L
 ClientSampleId :
 PB139736BS



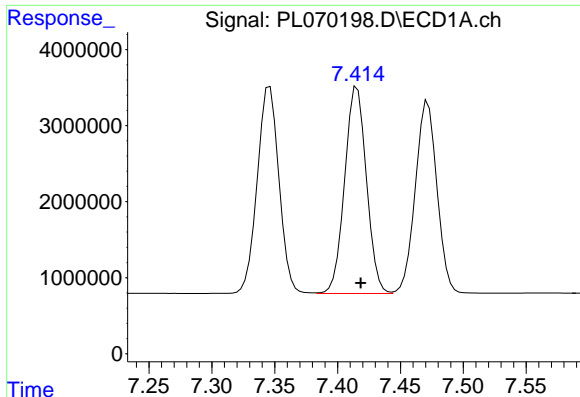
#9 Endosulfan I
 R.T.: 8.437 min
 Delta R.T.: -0.001 min
 Response: 79323874
 Conc: 53.92 ng/ml



#10 gamma-Chlordane
 R.T.: 7.346 min
 Delta R.T.: -0.002 min
 Response: 32714320
 Conc: 45.17 ng/ml



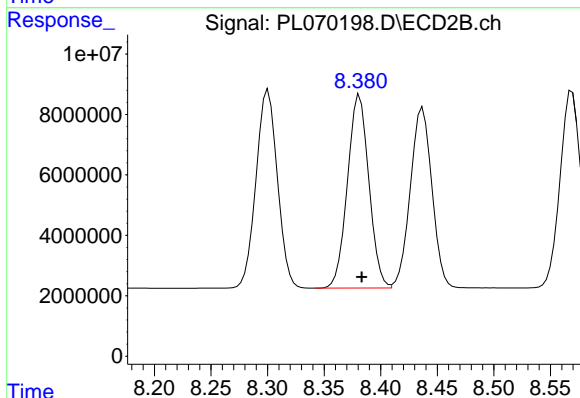
#10 gamma-Chlordane
 R.T.: 8.301 min
 Delta R.T.: -0.002 min
 Response: 86424896
 Conc: 54.03 ng/ml



#11 alpha-Chlordane

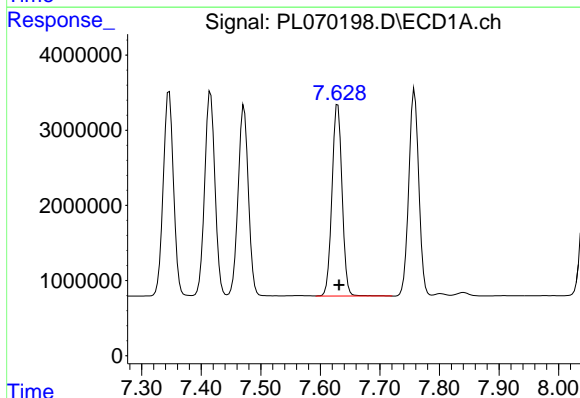
R.T.: 7.416 min
 Delta R.T.: -0.003 min
 Response: 32706735
 Conc: 44.91 ng/ml

Instrument :
 ECD_L
 ClientSampled :
 PB139736BS



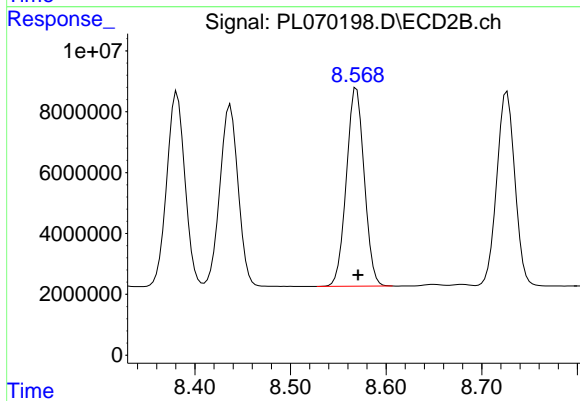
#11 alpha-Chlordane

R.T.: 8.381 min
 Delta R.T.: -0.002 min
 Response: 84228760
 Conc: 53.41 ng/ml



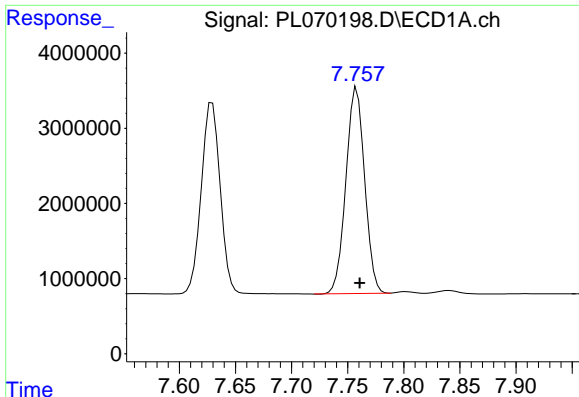
#12 4,4'-DDE

R.T.: 7.629 min
 Delta R.T.: -0.002 min
 Response: 30048238
 Conc: 47.21 ng/ml



#12 4,4'-DDE

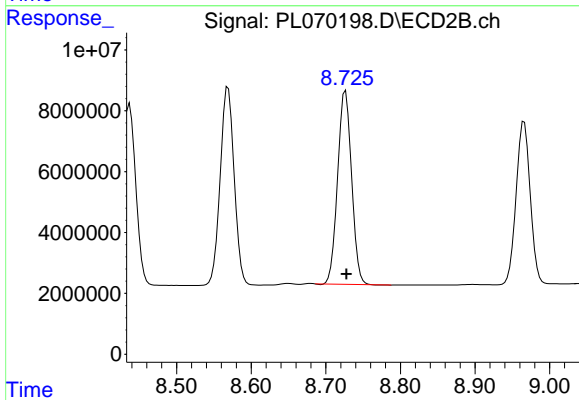
R.T.: 8.569 min
 Delta R.T.: -0.002 min
 Response: 84959228
 Conc: 54.85 ng/ml



#13 Dieldrin

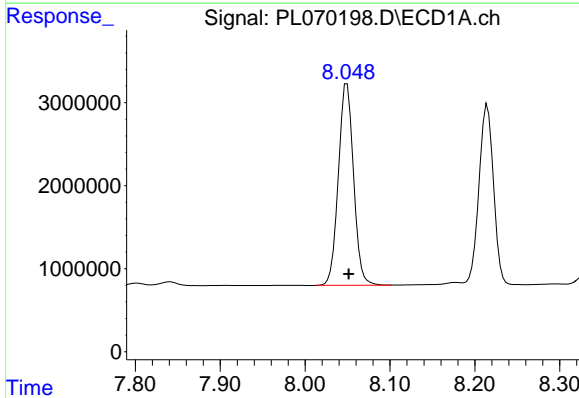
R.T.: 7.758 min
 Delta R.T.: -0.003 min
 Response: 31831319
 Conc: 46.33 ng/ml

Instrument :
 ECD_L
 ClientSampleId :
 PB139736BS



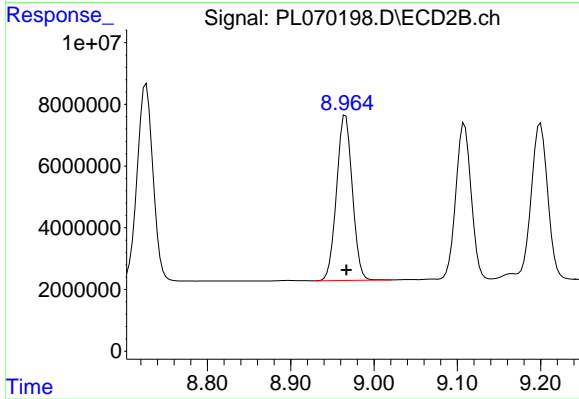
#13 Dieldrin

R.T.: 8.727 min
 Delta R.T.: -0.001 min
 Response: 82759802
 Conc: 54.21 ng/ml



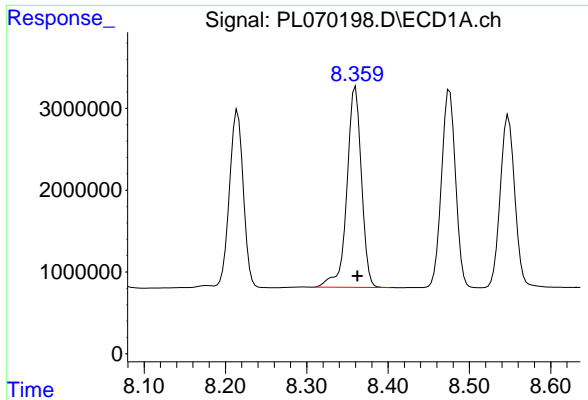
#14 Endrin

R.T.: 8.049 min
 Delta R.T.: -0.002 min
 Response: 30192390
 Conc: 47.78 ng/ml



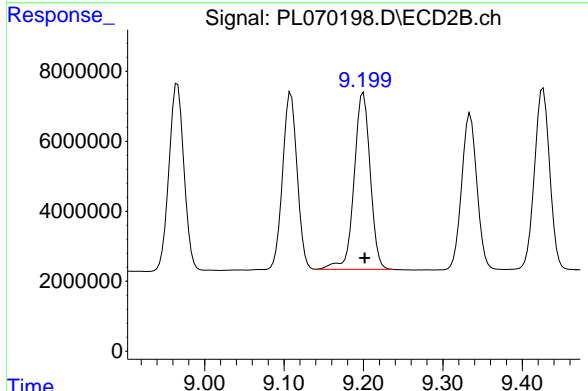
#14 Endrin

R.T.: 8.966 min
 Delta R.T.: -0.001 min
 Response: 70414181
 Conc: 56.06 ng/ml

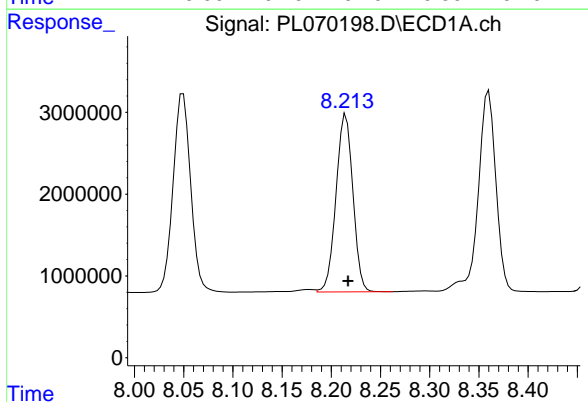


#15 Endosulfan II
 R.T.: 8.360 min
 Delta R.T.: -0.002 min
 Response: 30427409
 Conc: 47.96 ng/ml

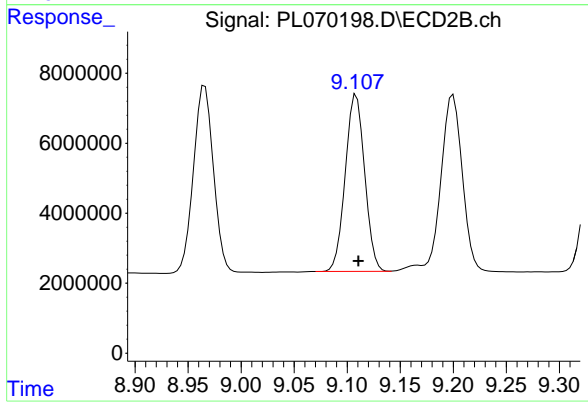
Instrument :
 ECD_L
 ClientSampleId :
 PB139736BS



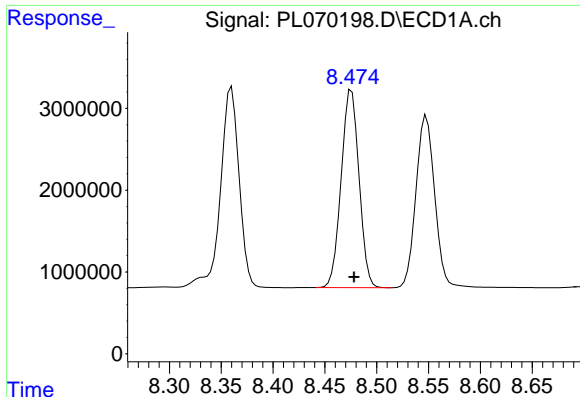
#15 Endosulfan II
 R.T.: 9.200 min
 Delta R.T.: -0.002 min
 Response: 71151239
 Conc: 59.54 ng/ml



#16 4,4'-DDD
 R.T.: 8.215 min
 Delta R.T.: -0.002 min
 Response: 25925181
 Conc: 46.22 ng/ml



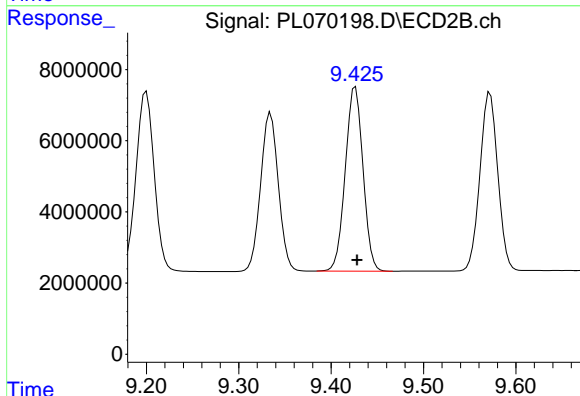
#16 4,4'-DDD
 R.T.: 9.109 min
 Delta R.T.: -0.002 min
 Response: 64230610
 Conc: 54.38 ng/ml



#17 4,4'-DDT

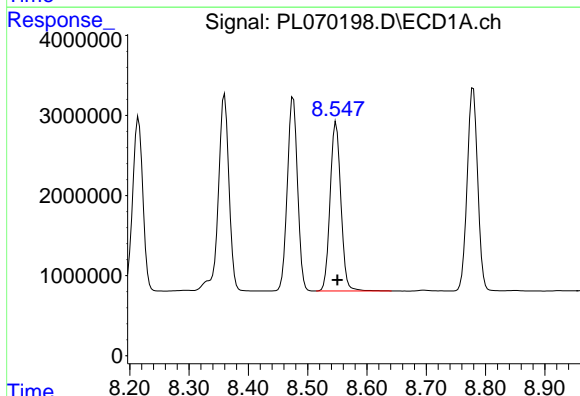
R.T.: 8.476 min
 Delta R.T.: -0.003 min
 Response: 28994277
 Conc: 47.40 ng/ml

Instrument :
 ECD_L
 ClientSampled :
 PB139736BS



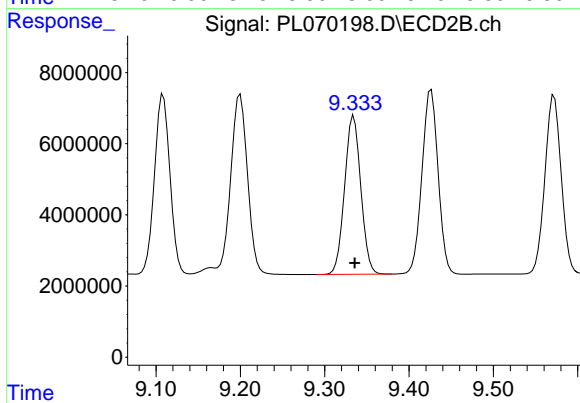
#17 4,4'-DDT

R.T.: 9.426 min
 Delta R.T.: -0.002 min
 Response: 68975564
 Conc: 52.78 ng/ml



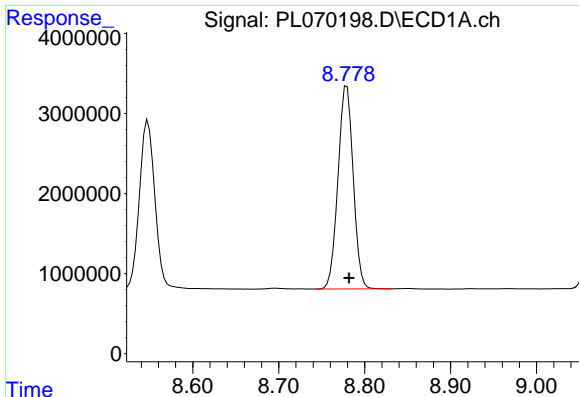
#18 Endrin aldehyde

R.T.: 8.548 min
 Delta R.T.: -0.003 min
 Response: 26517981
 Conc: 53.52 ng/ml



#18 Endrin aldehyde

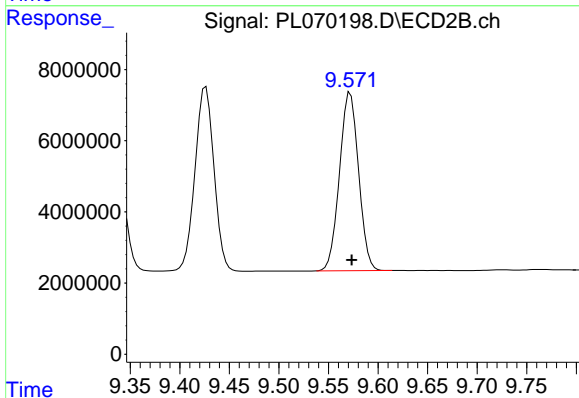
R.T.: 9.334 min
 Delta R.T.: -0.001 min
 Response: 59580497
 Conc: 61.77 ng/ml



#19 Endosulfan Sulfate

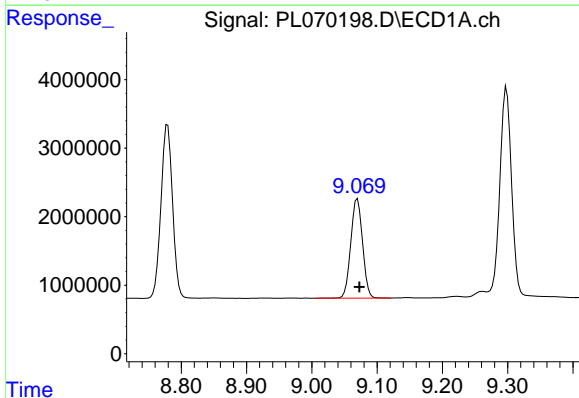
R.T.: 8.779 min
 Delta R.T.: -0.003 min
 Response: 31171768
 Conc: 47.25 ng/ml

Instrument :
 ECD_L
 ClientSampleId :
 PB139736BS



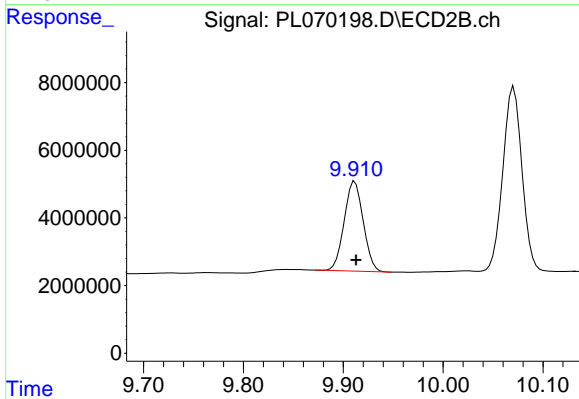
#19 Endosulfan Sulfate

R.T.: 9.572 min
 Delta R.T.: -0.001 min
 Response: 67188661
 Conc: 54.90 ng/ml



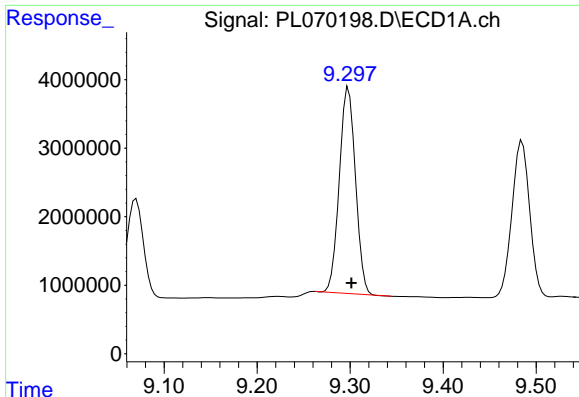
#20 Methoxychlor

R.T.: 9.070 min
 Delta R.T.: -0.003 min
 Response: 18186797
 Conc: 48.71 ng/ml



#20 Methoxychlor

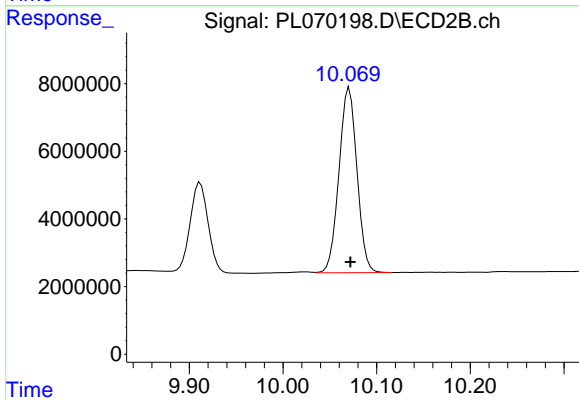
R.T.: 9.912 min
 Delta R.T.: -0.001 min
 Response: 35076478
 Conc: 54.20 ng/ml



#21 Endrin ketone

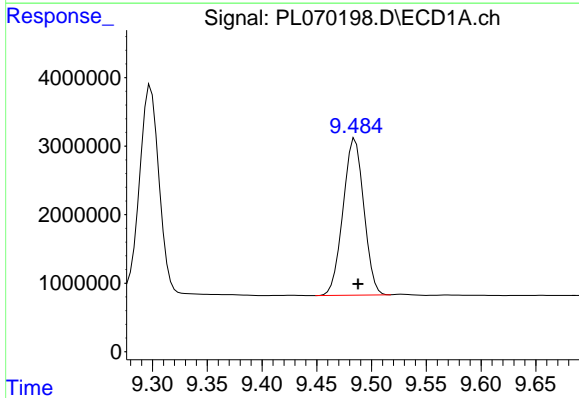
R.T.: 9.298 min
 Delta R.T.: -0.003 min
 Response: 36262267
 Conc: 47.46 ng/ml

Instrument :
 ECD_L
 ClientSampleId :
 PB139736BS



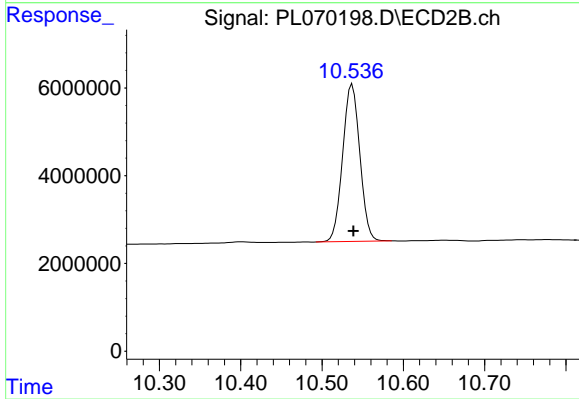
#21 Endrin ketone

R.T.: 10.071 min
 Delta R.T.: -0.001 min
 Response: 73056756
 Conc: 54.62 ng/ml



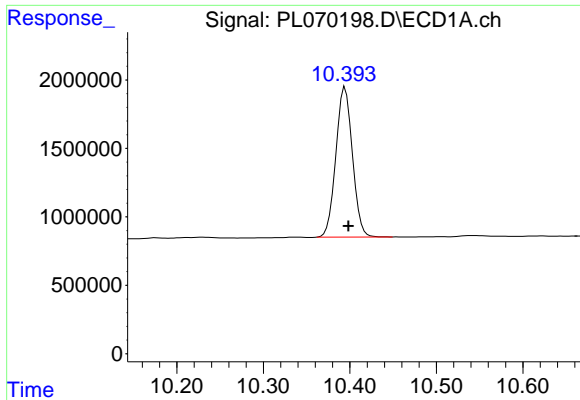
#22 Mirex

R.T.: 9.485 min
 Delta R.T.: -0.003 min
 Response: 30206435
 Conc: 45.80 ng/ml



#22 Mirex

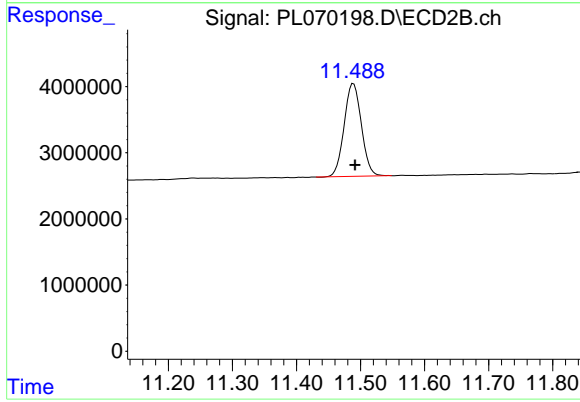
R.T.: 10.537 min
 Delta R.T.: -0.002 min
 Response: 52520101
 Conc: 53.31 ng/ml



#28 Decachlorobiphenyl

R.T.: 10.395 min
Delta R.T.: -0.004 min
Response: 14508249
Conc: 20.97 ng/ml

Instrument :
ECD_L
ClientSampleId :
PB139736BS



#28 Decachlorobiphenyl

R.T.: 11.489 min
Delta R.T.: -0.003 min
Response: 26168706
Conc: 21.62 ng/ml