

Data Path : Z:\pestpcbsrv\HPCHEM1\ECD_L\Data\PL100919\
 Data File : PL053175.D
 Signal(s) : Signal #1: ECD1A.ch Signal #2: ECD2B.ch
 Acq On : 09 Oct 2019 09:59
 Operator : SG\AJ
 Sample : K5152-01
 Misc :
 ALS Vial : 5 Sample Multiplier: 1

Instrument :
 ECD_L
 ClientSampled :

Integration File signal 1: autoint1.e
 Integration File signal 2: autoint2.e
 Quant Time: Oct 10 00:42:08 2019
 Quant Method : Z:\pestpcbsrv\HPCHEM1\ECD_L\methods\PL092919.M
 Quant Title : GC Extractables
 QLast Update : Mon Sep 30 08:44:08 2019
 Response via : Initial Calibration
 Integrator: ChemStation

Volume Inj. : 1 µl
 Signal #1 Phase : ZB-MR2 Signal #2 Phase: ZB-MR1
 Signal #1 Info : 30M x 0.32mm x0.2 Signal #2 Info : 30M x 0.32mm x0.5µm

Compound	RT#1	RT#2	Resp#1	Resp#2	ng/ml	ng/ml

System Monitoring Compounds						
1) SA Tetrachlo...	3.549	4.047	114.2E6	24873703	11.480	9.263
2) SA Decachlor...	8.340	9.126	110.2E6	32038750	11.007	10.921
Target Compounds						
2) A alpha-BHC	0.000	4.460f	0	4133803	N.D.	1.076 #
3) MA gamma-BHC...	0.000	4.734	0	4836949	N.D.	1.336 #
4) MA Heptachlor	0.000	5.222	0	16729085	N.D.	4.390 #
5) MB Aldrin	0.000	5.536	0	17750560	N.D.	5.122 #
6) B beta-BHC	4.536	4.917f	35343123	415258	5.693	0.264 #
7) B delta-BHC	0.000	5.108	0	6547667	N.D.	1.809 #
8) B Heptachlo...	0.000	5.933	0	14678684	N.D.	4.380 #
9) A Endosulfan I	0.000	6.280	0	16042953	N.D.	5.133 #
10) B gamma-Chl...	0.000	6.161	0	12097492	N.D.	3.576 #
11) B alpha-Chl...	0.000	6.233	0	33475956	N.D.	9.945 #
12) B 4,4'-DDE	5.736	6.383	36181962	10603973	3.117	3.247
13) MA Dieldrin	0.000	6.553	0	9280875	N.D.	2.845 #
14) MA Endrin	0.000	6.781f	0	9530370	N.D.	3.432 #
15) B Endosulfa...	0.000	6.974	0	5682956	N.D.	1.915 #
16) A 4,4'-DDD	0.000	6.876	0	3111547	N.D.	1.269 #
17) MA 4,4'-DDT	0.000	7.176	0	7118045	N.D.	2.735 #
23) Chlordane-1	0.000	5.056	0	11047243	N.D.	108.915 #
24) Chlordane-2	0.000	5.536f	0	17750560	N.D.	158.597 #
25) Chlordane-3	0.000	6.161	0	12097492	N.D.	27.778 #
26) Chlordane-4	0.000	6.233	0	33475956	N.D.	63.044 #
27) Chlordane-5	0.000	7.024	0	1024830	N.D.	11.618 #

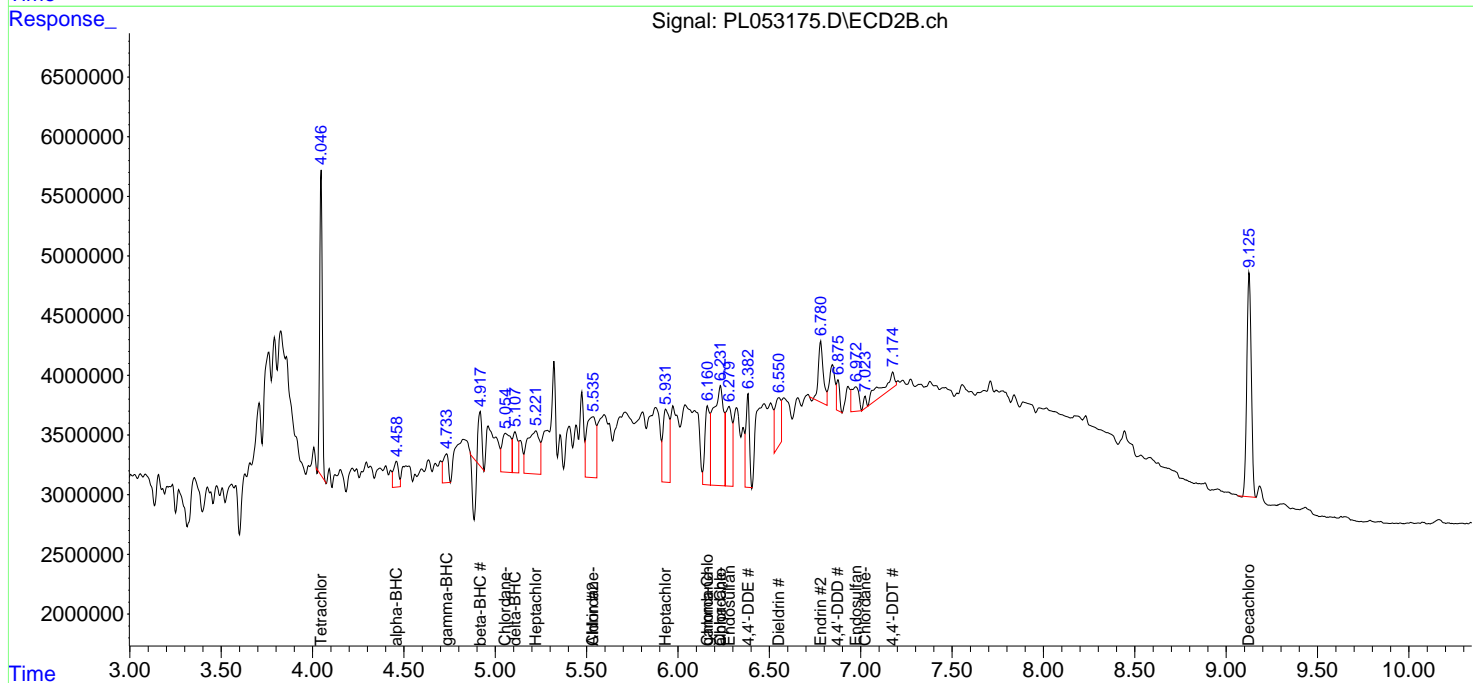
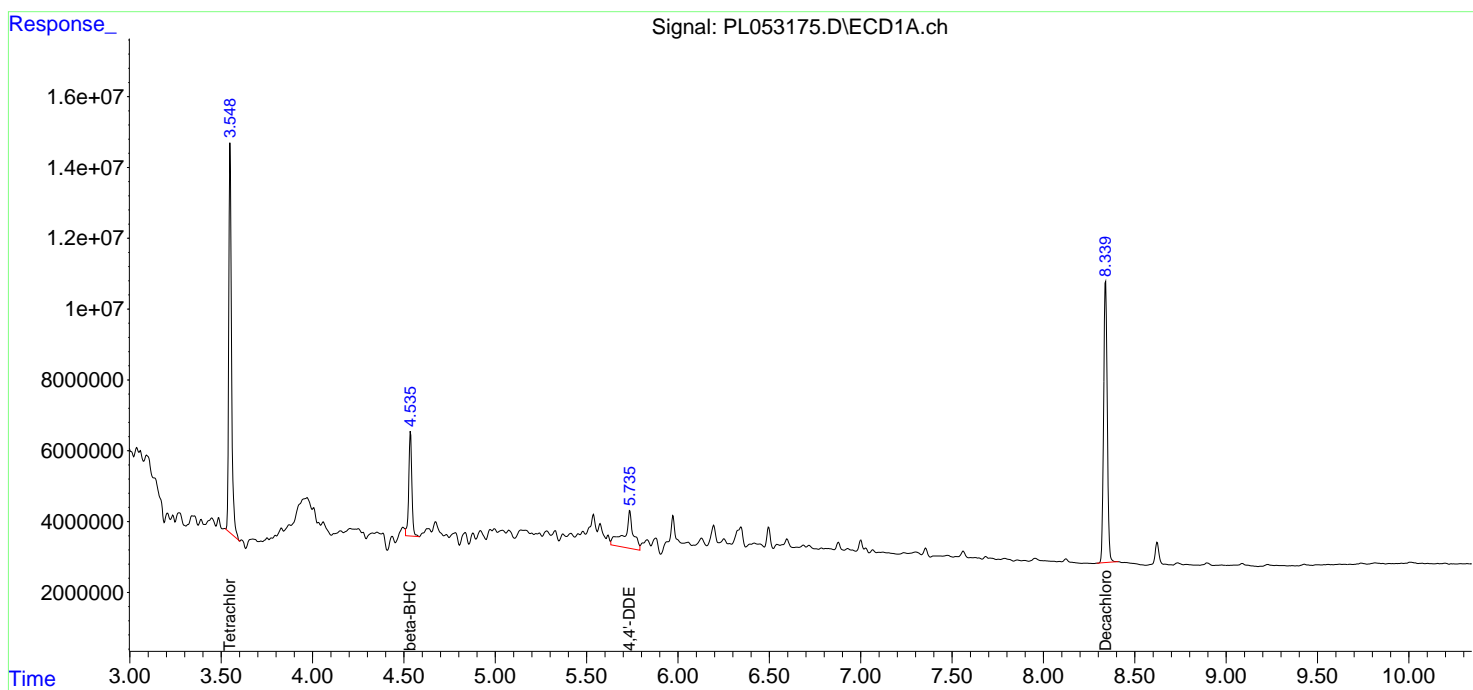
(f)=RT Delta > 1/2 Window (#)=Amounts differ by > 25% (m)=manual int.

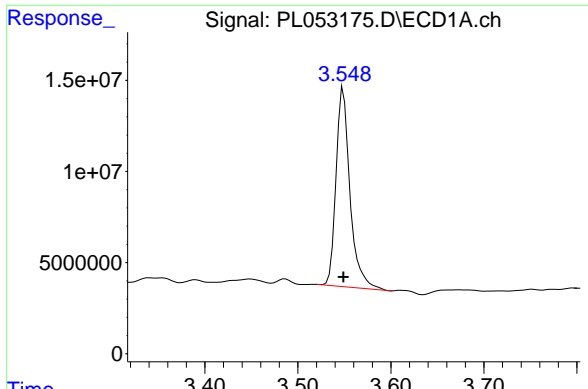
Data Path : Z:\pestpcbsrv\HPCHEM1\ECD_L\Data\PL100919\
 Data File : PL053175.D
 Signal(s) : Signal #1: ECD1A.ch Signal #2: ECD2B.ch
 Acq On : 09 Oct 2019 09:59
 Operator : SG\AJ
 Sample : K5152-01
 Misc :
 ALS Vial : 5 Sample Multiplier: 1

Instrument :
 ECD_L
 ClientSampled :

Integration File signal 1: autoint1.e
 Integration File signal 2: autoint2.e
 Quant Time: Oct 10 00:42:08 2019
 Quant Method : Z:\pestpcbsrv\HPCHEM1\ECD_L\methods\PL092919.M
 Quant Title : GC Extractables
 QLast Update : Mon Sep 30 08:44:08 2019
 Response via : Initial Calibration
 Integrator: ChemStation

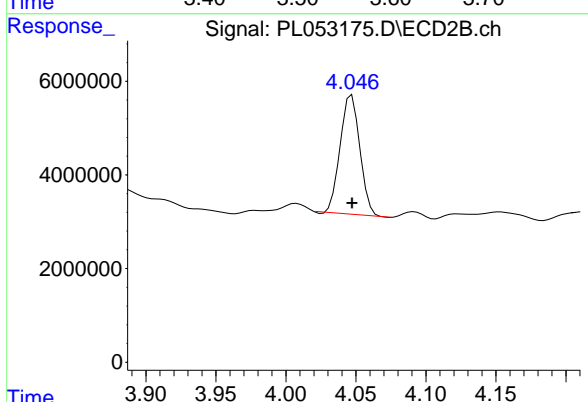
Volume Inj. : 1 µl
 Signal #1 Phase : ZB-MR2 Signal #2 Phase: ZB-MR1
 Signal #1 Info : 30M x 0.32mm x0.2 Signal #2 Info : 30M x 0.32mm x0.5µm



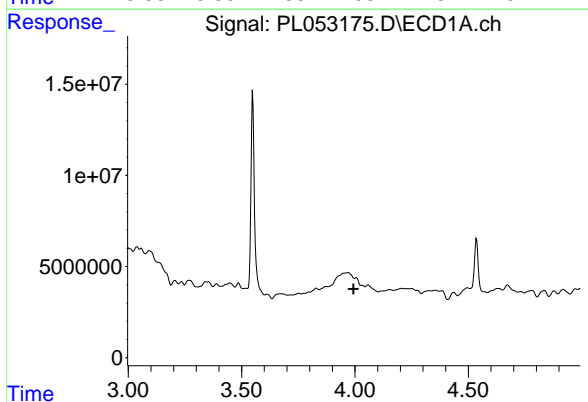


#1 Tetrachloro-m-xylene
 R.T.: 3.549 min
 Delta R.T.: 0.000 min
 Response: 114185958
 Conc: 11.48 ng/ml

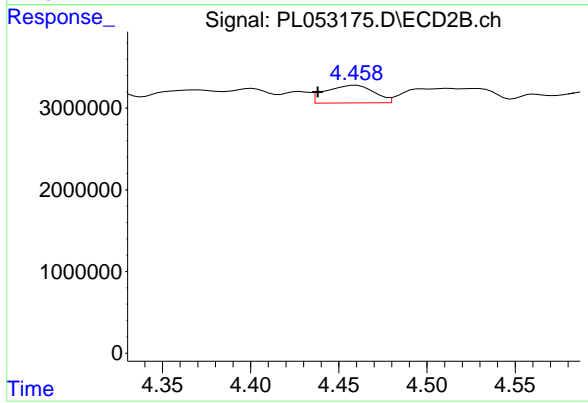
Instrument :
 ECD_L
 ClientSampleId :



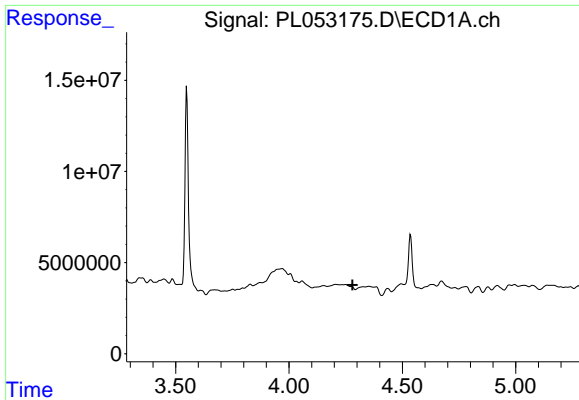
#1 Tetrachloro-m-xylene
 R.T.: 4.047 min
 Delta R.T.: 0.000 min
 Response: 24873703
 Conc: 9.26 ng/ml



#2 alpha-BHC
 R.T.: 0.000 min
 Exp R.T. : 3.994 min
 Response: 0
 Conc: N.D.

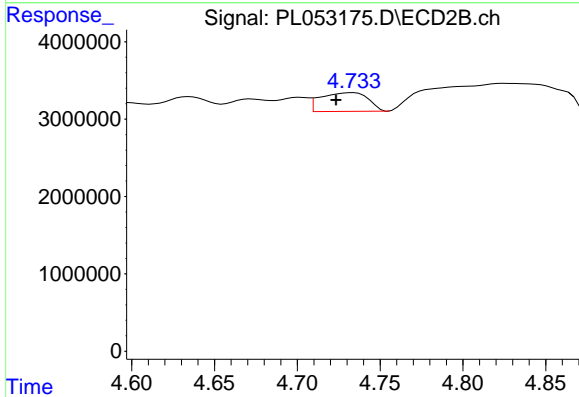


#2 alpha-BHC
 R.T.: 4.460 min
 Delta R.T.: 0.022 min
 Response: 4133803
 Conc: 1.08 ng/ml

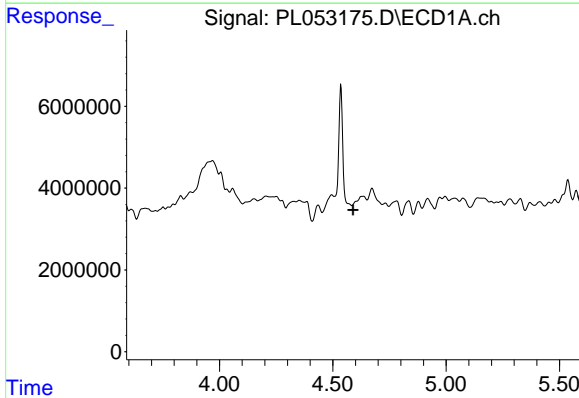


#3 gamma-BHC (Lindane)
 R.T.: 0.000 min
 Exp R.T. : 4.281 min
 Response: 0
 Conc: N.D.

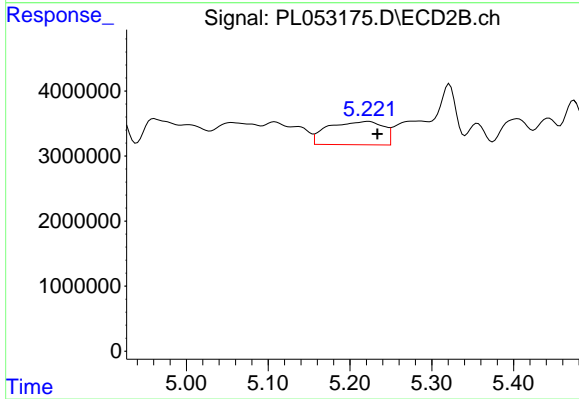
Instrument :
 ECD_L
 ClientSampled :



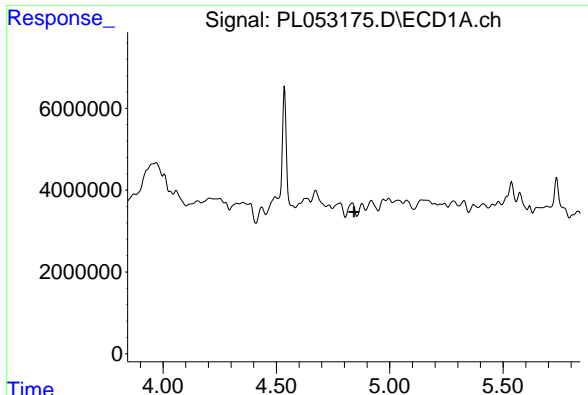
#3 gamma-BHC (Lindane)
 R.T.: 4.734 min
 Delta R.T.: 0.010 min
 Response: 4836949
 Conc: 1.34 ng/ml



#4 Heptachlor
 R.T.: 0.000 min
 Exp R.T. : 4.590 min
 Response: 0
 Conc: N.D.

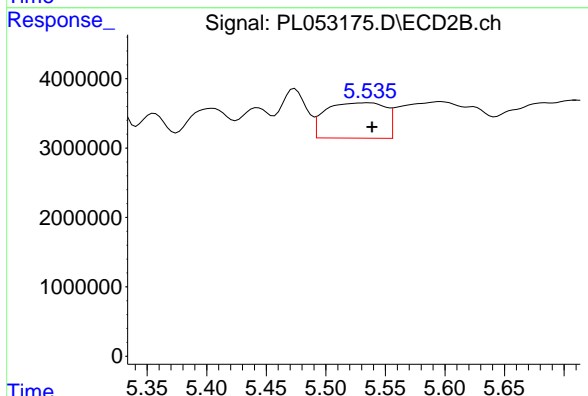


#4 Heptachlor
 R.T.: 5.222 min
 Delta R.T.: -0.011 min
 Response: 16729085
 Conc: 4.39 ng/ml

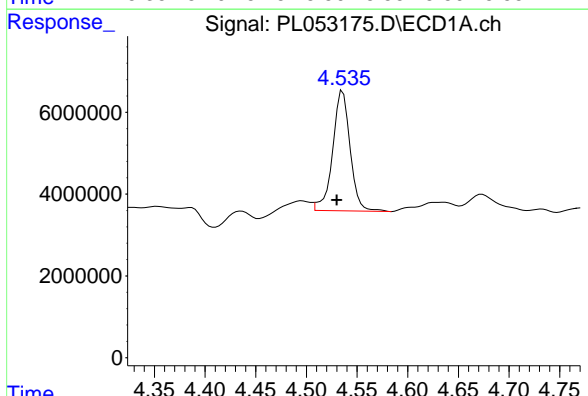


#5 Aldrin
 R.T.: 0.000 min
 Exp R.T.: 4.843 min
 Response: 0
 Conc: N.D.

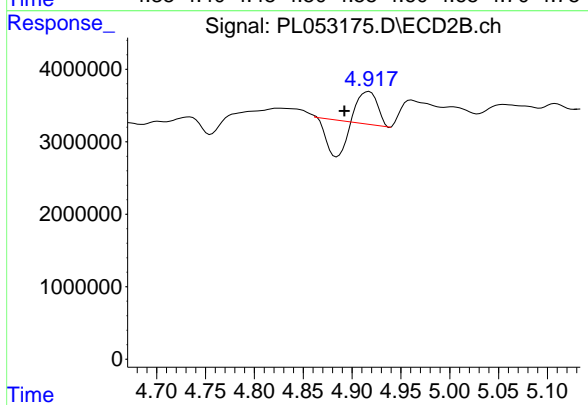
Instrument :
 ECD_L
 ClientSampled :



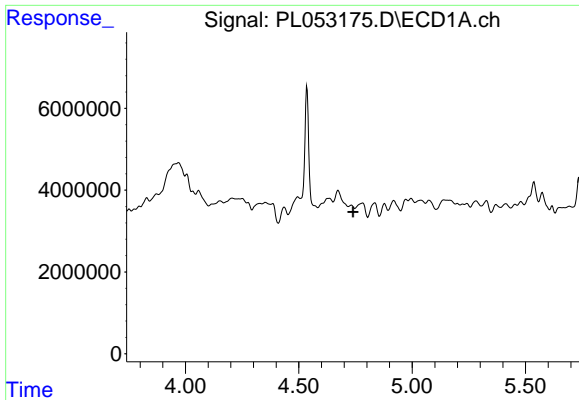
#5 Aldrin
 R.T.: 5.536 min
 Delta R.T.: -0.003 min
 Response: 17750560
 Conc: 5.12 ng/ml



#6 beta-BHC
 R.T.: 4.536 min
 Delta R.T.: 0.006 min
 Response: 35343123
 Conc: 5.69 ng/ml



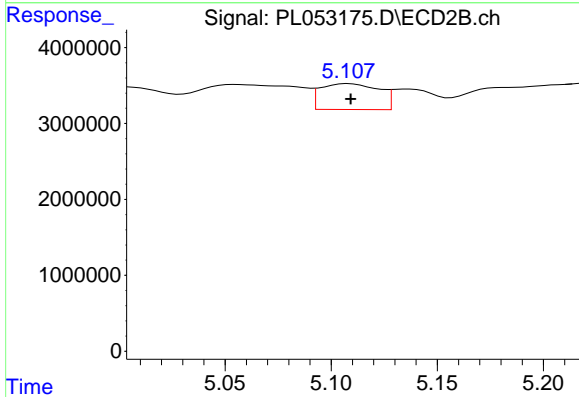
#6 beta-BHC
 R.T.: 4.917 min
 Delta R.T.: 0.025 min
 Response: 415258
 Conc: 0.26 ng/ml



#7 delta-BHC

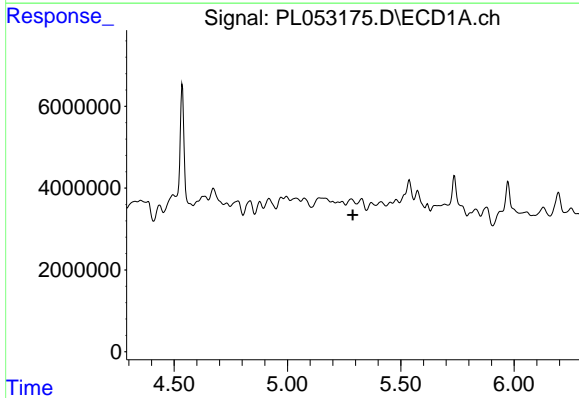
R.T.: 0.000 min
 Exp R.T. : 4.740 min
 Response: 0
 Conc: N.D.

Instrument :
 ECD_L
 ClientSampled :



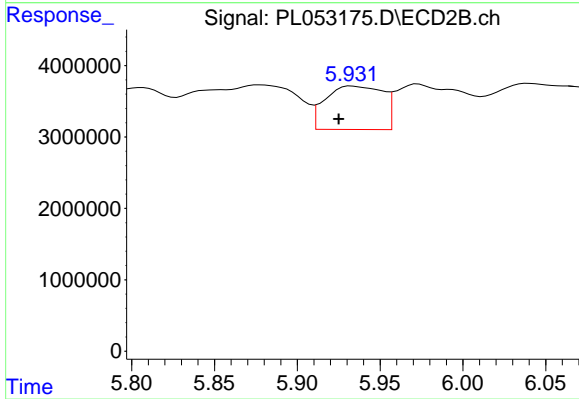
#7 delta-BHC

R.T.: 5.108 min
 Delta R.T.: 0.000 min
 Response: 6547667
 Conc: 1.81 ng/ml



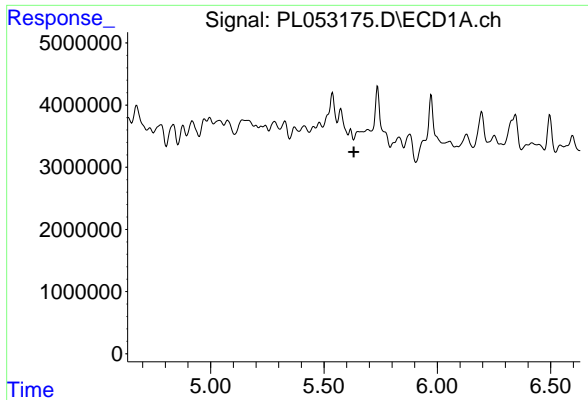
#8 Heptachlor epoxide

R.T.: 0.000 min
 Exp R.T. : 5.289 min
 Response: 0
 Conc: N.D.



#8 Heptachlor epoxide

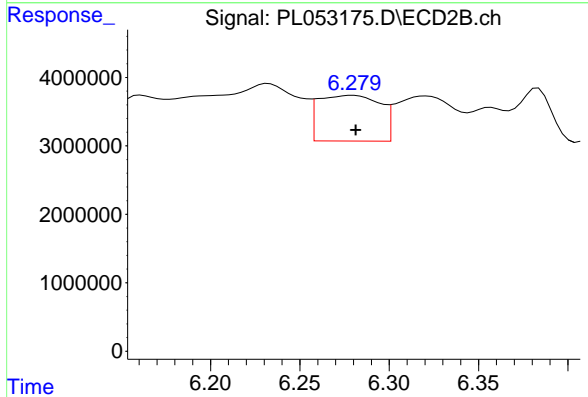
R.T.: 5.933 min
 Delta R.T.: 0.008 min
 Response: 14678684
 Conc: 4.38 ng/ml



#9 Endosulfan I

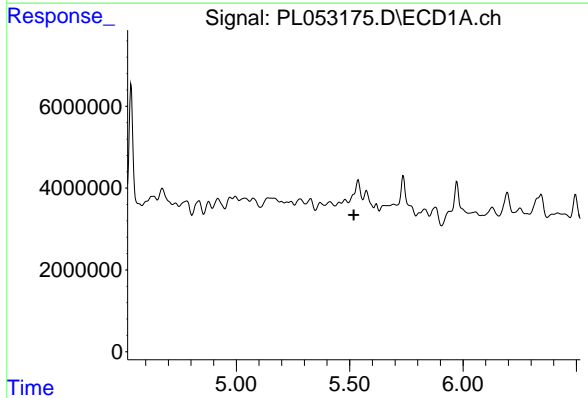
R.T.: 0.000 min
 Exp R.T. : 5.632 min
 Response: 0
 Conc: N.D.

Instrument :
 ECD_L
 ClientSampled :



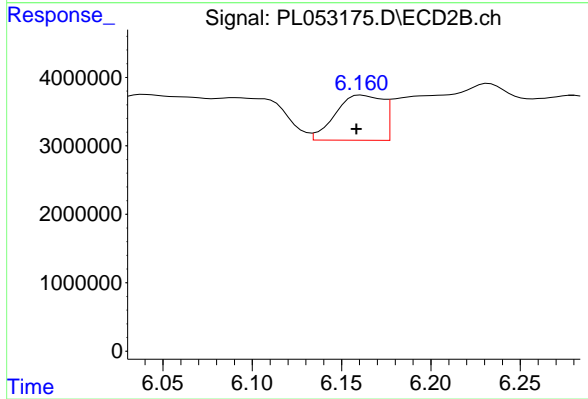
#9 Endosulfan I

R.T.: 6.280 min
 Delta R.T.: -0.001 min
 Response: 16042953
 Conc: 5.13 ng/ml



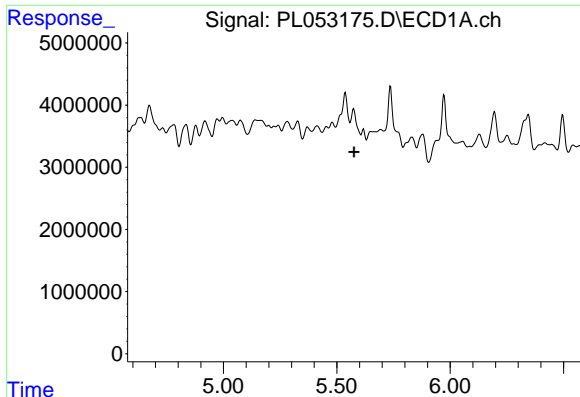
#10 gamma-Chlordane

R.T.: 0.000 min
 Exp R.T. : 5.518 min
 Response: 0
 Conc: N.D.



#10 gamma-Chlordane

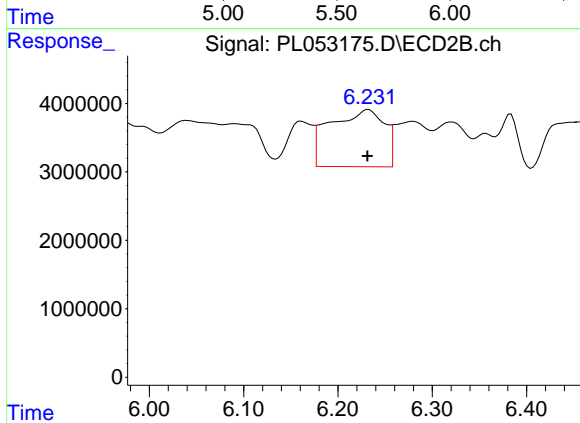
R.T.: 6.161 min
 Delta R.T.: 0.003 min
 Response: 12097492
 Conc: 3.58 ng/ml



#11 alpha-Chlordane

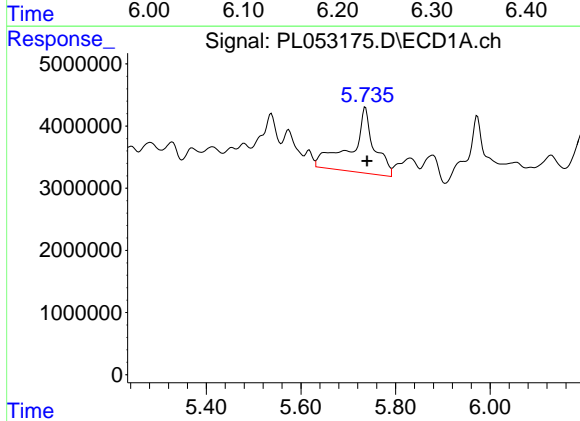
R.T.: 0.000 min
 Exp R.T.: 5.577 min
 Response: 0
 Conc: N.D.

Instrument :
 ECD_L
 ClientSampled :



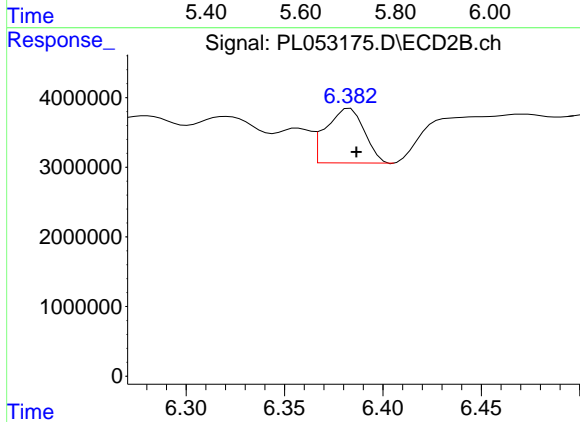
#11 alpha-Chlordane

R.T.: 6.233 min
 Delta R.T.: 0.001 min
 Response: 33475956
 Conc: 9.95 ng/ml



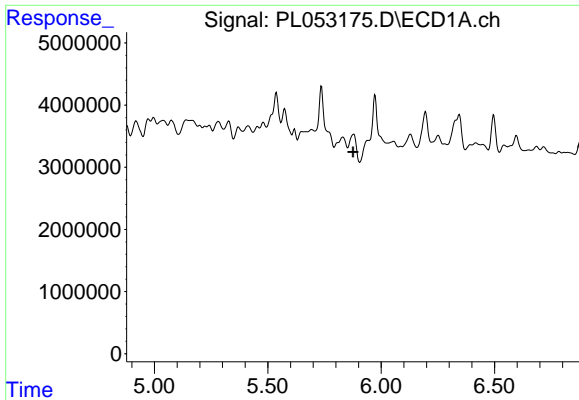
#12 4,4'-DDE

R.T.: 5.736 min
 Delta R.T.: -0.004 min
 Response: 36181962
 Conc: 3.12 ng/ml



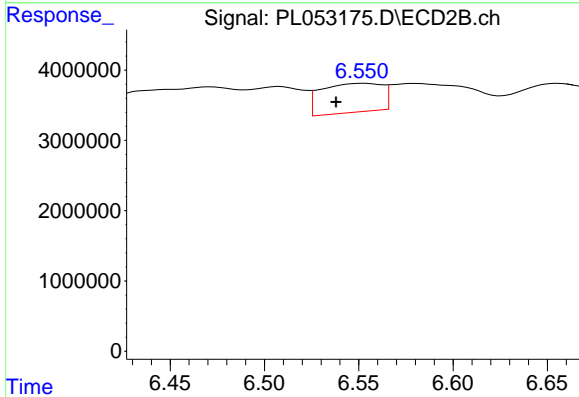
#12 4,4'-DDE

R.T.: 6.383 min
 Delta R.T.: -0.003 min
 Response: 10603973
 Conc: 3.25 ng/ml

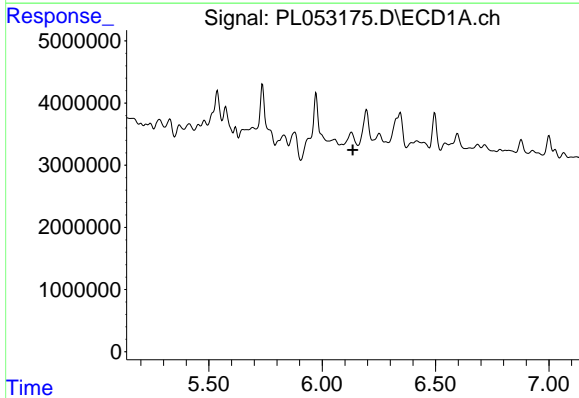


#13 Dieldrin
 R.T.: 0.000 min
 Exp R.T. : 5.876 min
 Response: 0
 Conc: N.D.

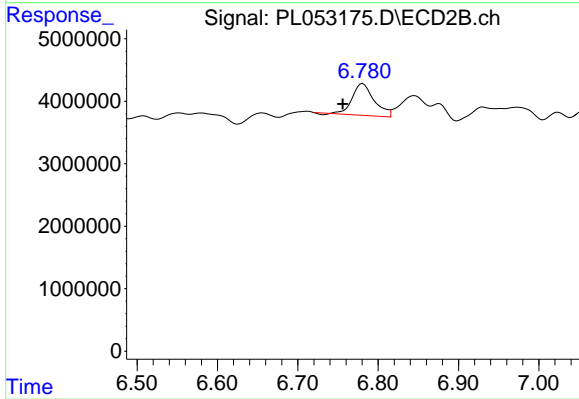
Instrument :
 ECD_L
 ClientSampled :



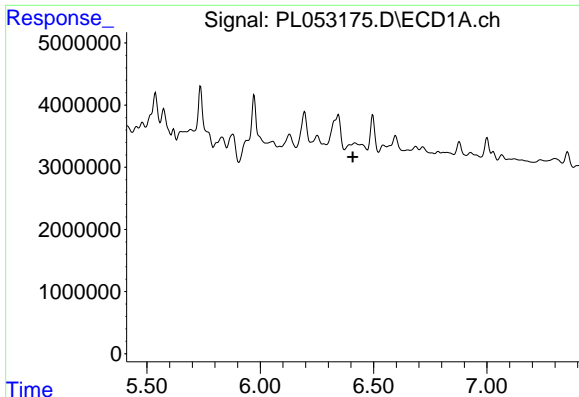
#13 Dieldrin
 R.T.: 6.553 min
 Delta R.T.: 0.015 min
 Response: 9280875
 Conc: 2.85 ng/ml



#14 Endrin
 R.T.: 0.000 min
 Exp R.T. : 6.135 min
 Response: 0
 Conc: N.D.



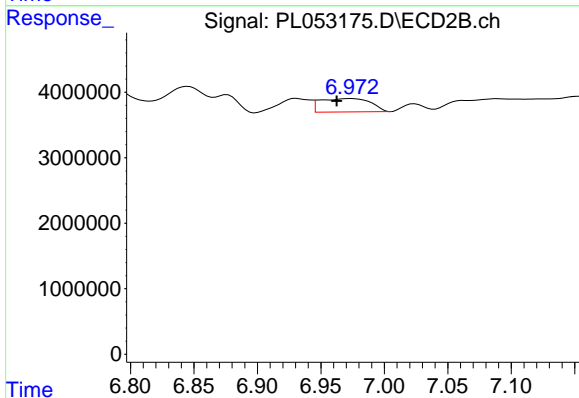
#14 Endrin
 R.T.: 6.781 min
 Delta R.T.: 0.025 min
 Response: 9530370
 Conc: 3.43 ng/ml



#15 Endosulfan II

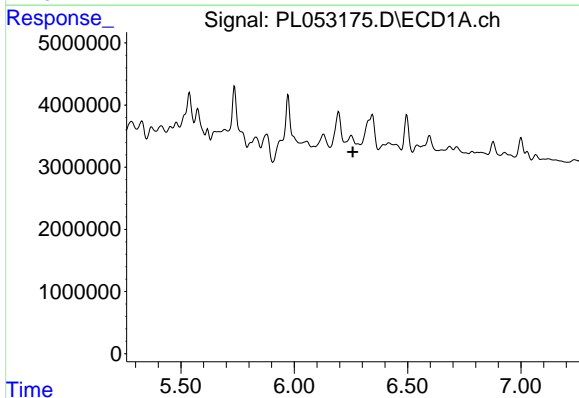
R.T.: 0.000 min
 Exp R.T. : 6.408 min
 Response: 0
 Conc: N.D.

Instrument :
 ECD_L
 ClientSampled :



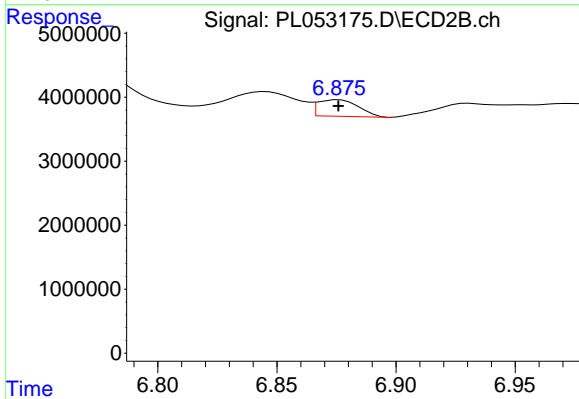
#15 Endosulfan II

R.T.: 6.974 min
 Delta R.T.: 0.011 min
 Response: 5682956
 Conc: 1.92 ng/ml



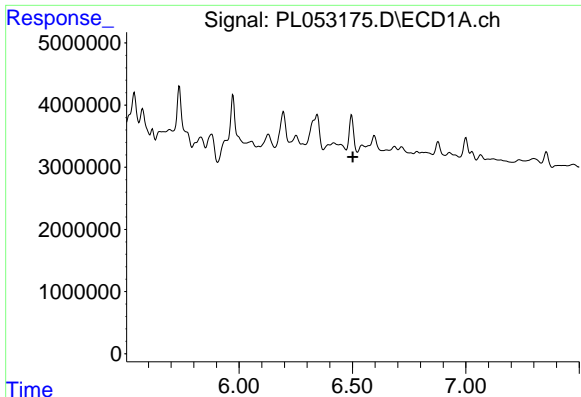
#16 4,4'-DDD

R.T.: 0.000 min
 Exp R.T. : 6.258 min
 Response: 0
 Conc: N.D.



#16 4,4'-DDD

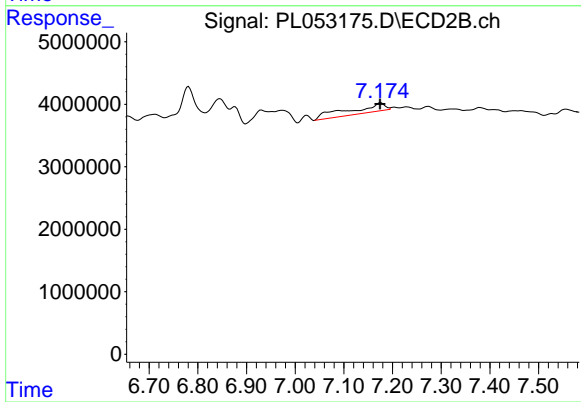
R.T.: 6.876 min
 Delta R.T.: 0.000 min
 Response: 3111547
 Conc: 1.27 ng/ml



#17 4,4'-DDT

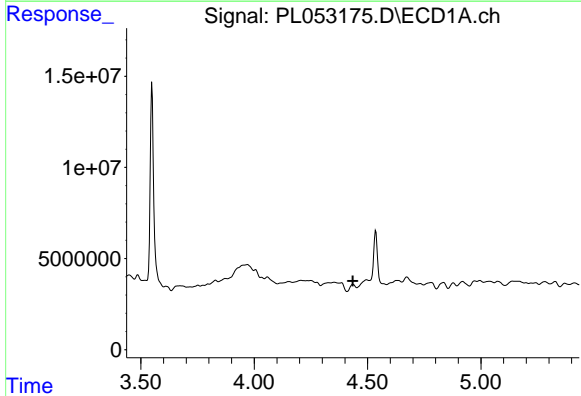
R.T.: 0.000 min
 Exp R.T. : 6.502 min
 Response: 0
 Conc: N.D.

Instrument :
 ECD_L
 ClientSampled :



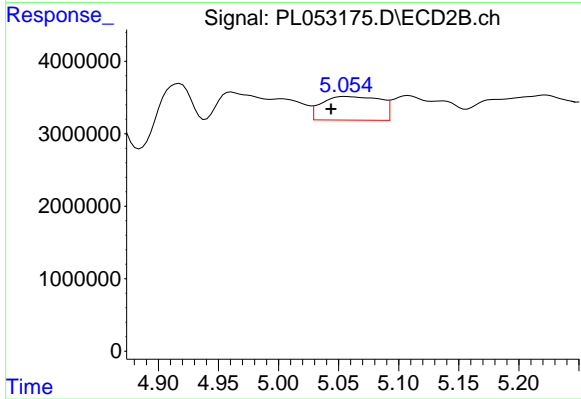
#17 4,4'-DDT

R.T.: 7.176 min
 Delta R.T.: 0.001 min
 Response: 7118045
 Conc: 2.74 ng/ml



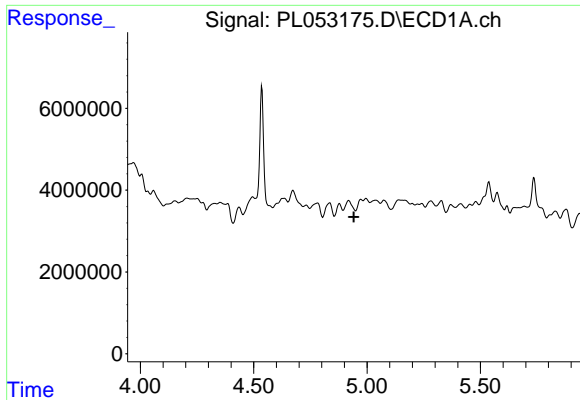
#23 Chlordane-1

R.T.: 0.000 min
 Exp R.T. : 4.435 min
 Response: 0
 Conc: N.D.



#23 Chlordane-1

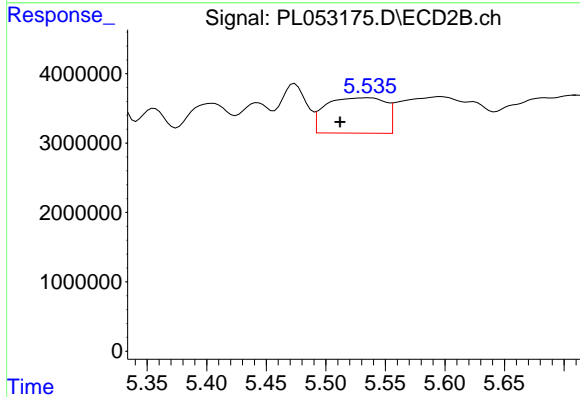
R.T.: 5.056 min
 Delta R.T.: 0.012 min
 Response: 11047243
 Conc: 108.92 ng/ml



#24 Chlordane-2

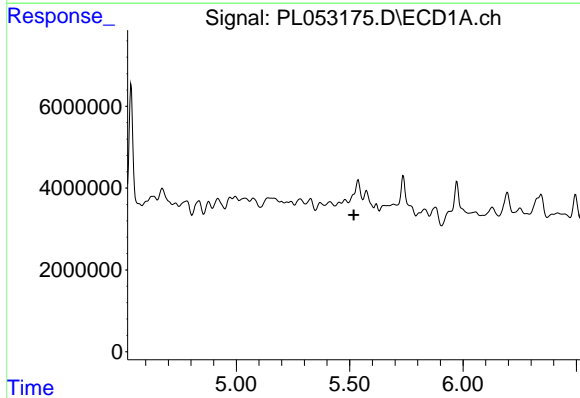
R.T.: 0.000 min
 Exp R.T. : 4.942 min
 Response: 0
 Conc: N.D.

Instrument :
 ECD_L
 ClientSampleId :



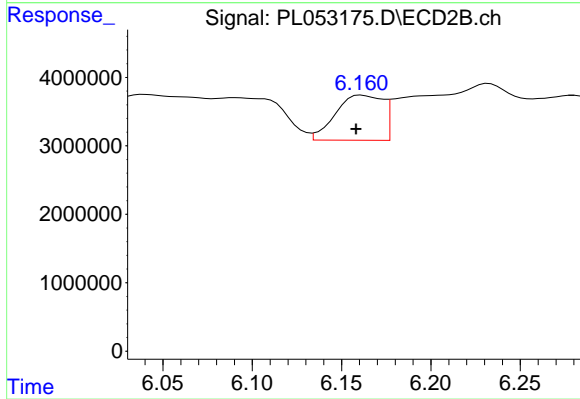
#24 Chlordane-2

R.T.: 5.536 min
 Delta R.T.: 0.024 min
 Response: 17750560
 Conc: 158.60 ng/ml



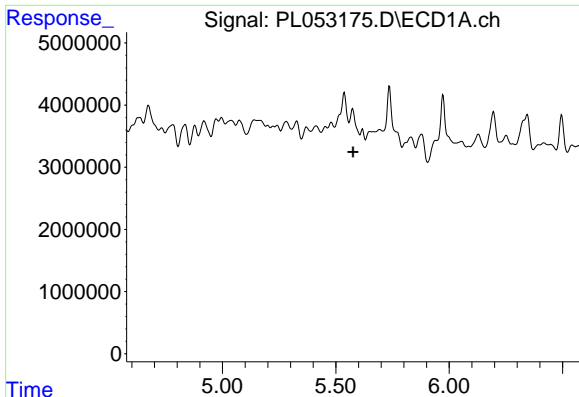
#25 Chlordane-3

R.T.: 0.000 min
 Exp R.T. : 5.518 min
 Response: 0
 Conc: N.D.



#25 Chlordane-3

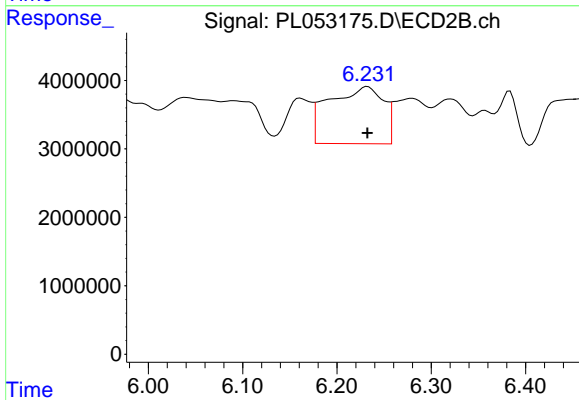
R.T.: 6.161 min
 Delta R.T.: 0.003 min
 Response: 12097492
 Conc: 27.78 ng/ml



#26 Chlordane-4

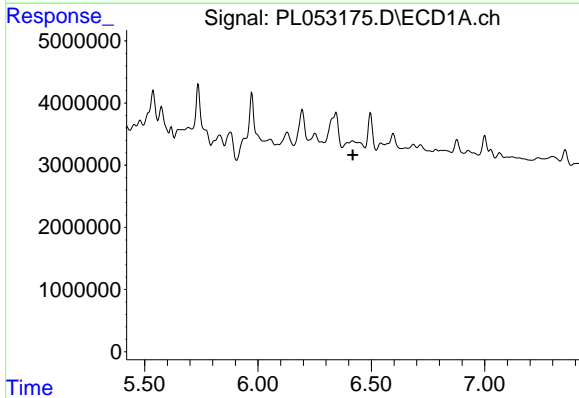
R.T.: 0.000 min
 Exp R.T. : 5.577 min
 Response: 0
 Conc: N.D.

Instrument :
 ECD_L
 ClientSampled :



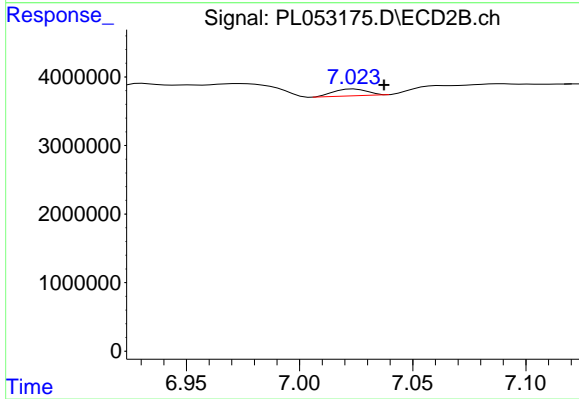
#26 Chlordane-4

R.T.: 6.233 min
 Delta R.T.: 0.000 min
 Response: 33475956
 Conc: 63.04 ng/ml



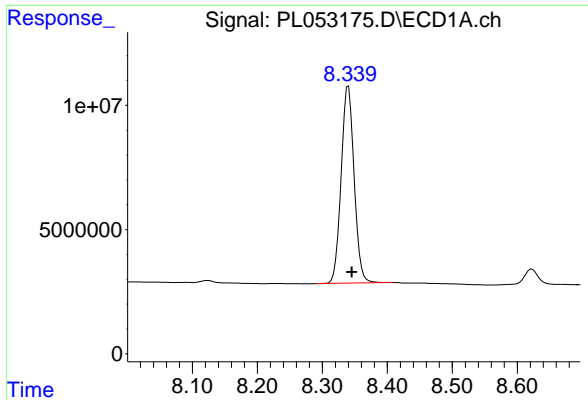
#27 Chlordane-5

R.T.: 0.000 min
 Exp R.T. : 6.418 min
 Response: 0
 Conc: N.D.



#27 Chlordane-5

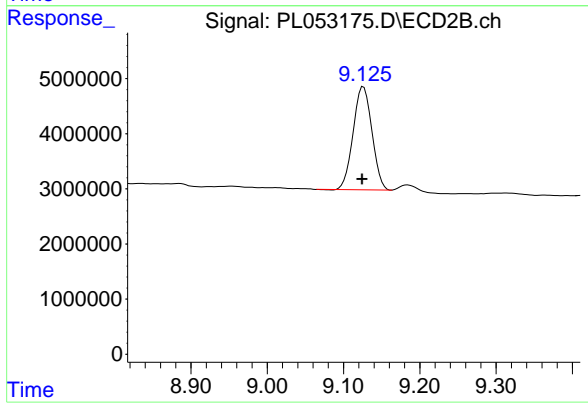
R.T.: 7.024 min
 Delta R.T.: -0.013 min
 Response: 1024830
 Conc: 11.62 ng/ml



#28 Decachlorobiphenyl

R.T.: 8.340 min
Delta R.T.: -0.005 min
Response: 110247968
Conc: 11.01 ng/ml

Instrument :
ECD_L
ClientSampleId :



#28 Decachlorobiphenyl

R.T.: 9.126 min
Delta R.T.: 0.002 min
Response: 32038750
Conc: 10.92 ng/ml