

Data Path : Z:\pestpcbsrv\HPCHEM1\ECD_L\Data\PL100920\
 Data File : PL062131.D
 Signal(s) : Signal #1: ECD1A.ch Signal #2: ECD2B.ch
 Acq On : 09 Oct 2020 20:36
 Operator : DD\AJ
 Sample : TOXAPH501
 Misc :
 ALS Vial : 8 Sample Multiplier: 1

Instrument :
 ECD_L
 ClientSampleId :
 TOXAPH501

Integration File signal 1: autoint1.e
 Integration File signal 2: autoint2.e
 Quant Time: Oct 10 01:46:47 2020
 Quant Method : Z:\pestpcbsrv\HPCHEM1\ECD_L\methods\PL100920CLP.M
 Quant Title : GC Extractables
 QLast Update : Sat Oct 10 01:45:31 2020
 Response via : Initial Calibration
 Integrator: ChemStation

Volume Inj. : 1 µl
 Signal #1 Phase : ZB-MR2 Signal #2 Phase: ZB-MR1
 Signal #1 Info : 30M x 0.32mm x0.2 Signal #2 Info : 30M x 0.32mm x 0.50µm

Compound	RT#1	RT#2	Resp#1	Resp#2	ng/ml	ng/ml

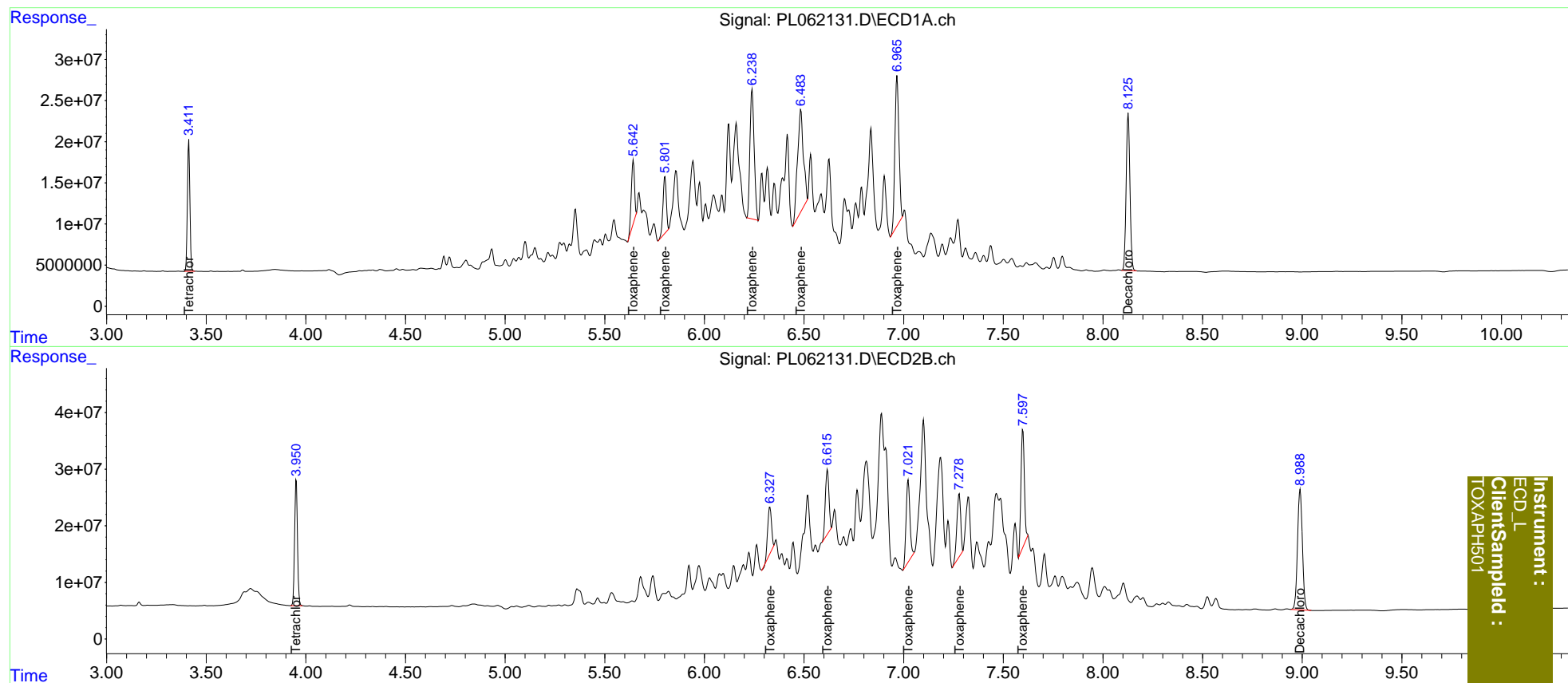
System Monitoring Compounds						
1) SA Tetrachlo...	3.413	3.952	136.9E6	224.6E6	76.544	78.408
27) SA Decachlor...	8.127	8.990	252.6E6	360.4E6	146.305	143.257
Target Compounds						
22) Toxaphene-1	5.643	6.329	84698858	107.3E6	8028.828	7743.912
23) Toxaphene-2	5.802	6.617	79658455	143.9E6	8562.043	7867.283
24) Toxaphene-3	6.239	7.023	232.5E6	188.8E6	8193.659	8043.196
25) Toxaphene-4	6.484	7.279	250.8E6	147.8E6	8399.855	7906.997
26) Toxaphene-5	6.967	7.598	256.7E6	251.7E6	8237.831	7614.669

(f)=RT Delta > 1/2 Window (#)=Amounts differ by > 25% (m)=manual int.

Data Path : Z:\pestpcbsrv\HPCHEM1\ECD_L\Data\PL100920\
 Data File : PL062131.D
 Signal(s) : Signal #1: ECD1A.ch Signal #2: ECD2B.ch
 Acq On : 09 Oct 2020 20:36
 Operator : DD\AJ
 Sample : TOXAPH501
 Misc :
 ALS Vial : 8 Sample Multiplier: 1

Integration File signal 1: autoint1.e
 Integration File signal 2: autoint2.e
 Quant Time: Oct 10 01:46:47 2020
 Quant Method : Z:\pestpcbsrv\HPCHEM1\ECD_L\methods\PL100920CLP.M
 Quant Title : GC Extractables
 QLast Update : Sat Oct 10 01:45:31 2020
 Response via : Initial Calibration
 Integrator: ChemStation

Volume Inj. : 1 µl
 Signal #1 Phase : ZB-MR2 Signal #2 Phase: ZB-MR1
 Signal #1 Info : 30M x 0.32mm x0.2 Signal #2 Info : 30M x 0.32mm x 0.50µm



Instrument :
 ECD_L
 ClientSampleId :
 TOXAPH501