

Data Path : Z:\pestpcbsrv\HPCHEM1\ECD_L\Data\PL101023\
 Data File : PL085814.D
 Signal(s) : Signal #1: ECD1A.ch Signal #2: ECD2B.ch
 Acq On : 10 Oct 2023 15:19
 Operator : AR\AJ
 Sample : 04699-01
 Misc : TOX LOD 50PPB SOIL
 ALS Vial : 9 Sample Multiplier: 1

Instrument :
 ECD_L
 ClientSampleId :

Integration File signal 1: autoint1.e
 Integration File signal 2: autoint2.e
 Quant Time: Oct 10 20:40:50 2023
 Quant Method : Z:\pestpcbsrv\HPCHEM1\ECD_L\methods\PL100323.M
 Quant Title : GC Extractables
 QLast Update : Wed Oct 04 05:29:39 2023
 Response via : Initial Calibration
 Integrator: ChemStation

Volume Inj. : 1 µl
 Signal #1 Phase : ZB-MR1 Signal #2 Phase: ZB-MR1
 Signal #1 Info : 30M x 0.32mm x0.2 Signal #2 Info : 30M x 0.32mm x0.5µm

Compound	RT#1	RT#2	Resp#1	Resp#2	ng/ml	ng/ml

System Monitoring Compounds						
1) SA Tetrachlo...	3.366	2.622	51075888	15582802	17.173	16.682
28) SA Decachlor...	8.872	7.779	42751915	19318937	19.629	20.931
Target Compounds						
2) A alpha-BHC	3.811	0.000	295604	0	0.069	N.D. #
4) MA Heptachlor	4.746	3.790	2082769	31782	0.539	0.027 #
5) MB Aldrin	0.000	4.084f	0	483263	N.D.	0.432 #
6) B beta-BHC	0.000	3.758	0	335404	N.D.	0.644 #
7) B delta-BHC	4.603	3.972	6840421	37567	1.784	0.033 #
8) B Heptachlo...	0.000	4.581	0	294471	N.D.	0.293 #
9) A Endosulfan I	0.000	4.951f	0	119181	N.D.	0.111 #
10) B gamma-Chl...	5.783f	4.843f	636432	175779	0.186	0.177
11) B alpha-Chl...	5.830	4.891	973063	307086	0.285	0.282
13) MA Dieldrin	0.000	5.197	0	76121	N.D.	0.078 #
15) B Endosulfa...	6.625	5.757	783660	446687	0.284	0.470 #
16) A 4,4'-DDD	6.531	0.000	2106693	0	1.046	N.D. #
17) MA 4,4'-DDT	0.000	5.880	0	758304	N.D.	0.959 #
18) B Endrin al...	6.771f	5.964	271063	611426	0.134	0.820 #
19) B Endosulfa...	6.978	6.171	3341209	77883	1.331	0.086 #
20) A Methoxychlor	0.000	6.446f	0	278805	N.D.	0.530 #
21) B Endrin ke...	7.441f	6.691	2536576	1779733	0.881	1.548 #
23) Chlordane-1	0.000	3.627	0	142940	N.D.	4.385 #
25) Chlordane-3	5.783f	4.843f	636432	175779	1.247	1.740 #
26) Chlordane-4	5.830	4.891	973063	307086	1.534	2.652 #
27) Chlordane-5	0.000	5.530f	0	71541	N.D.	2.567 #

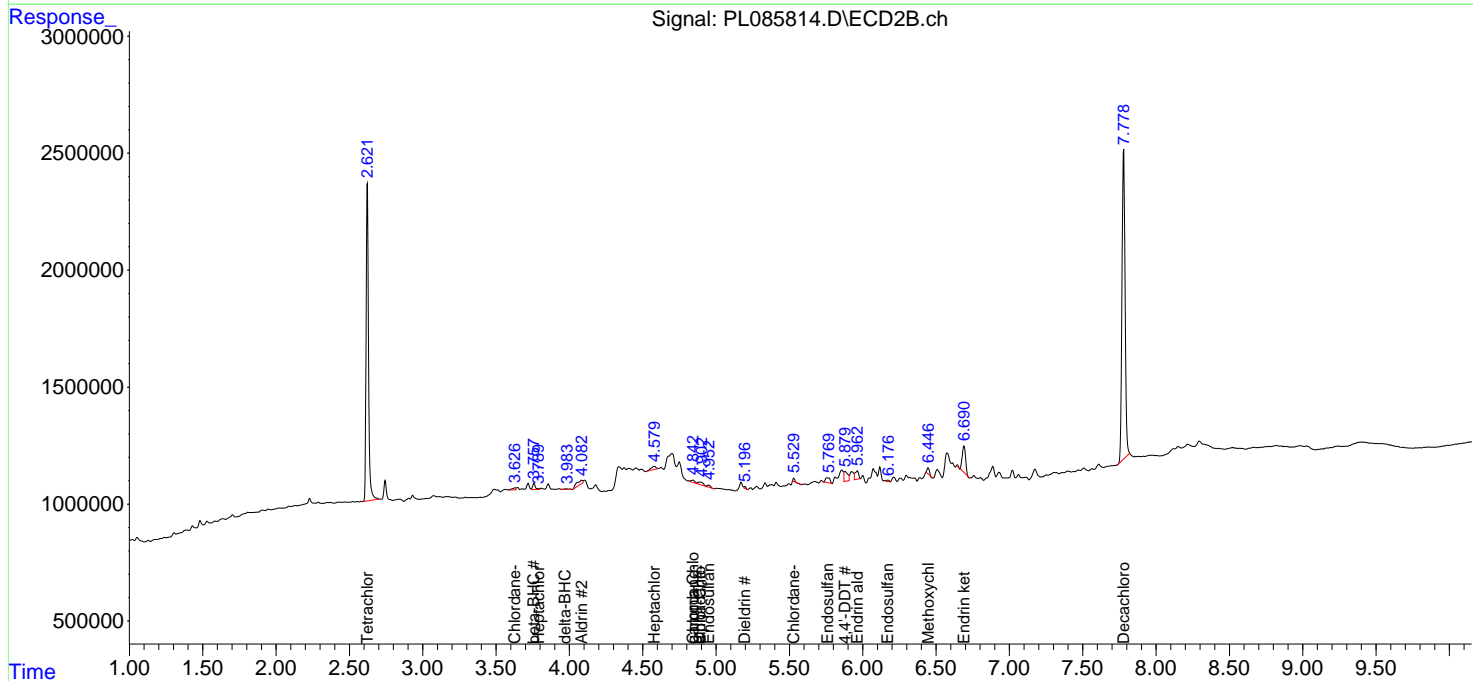
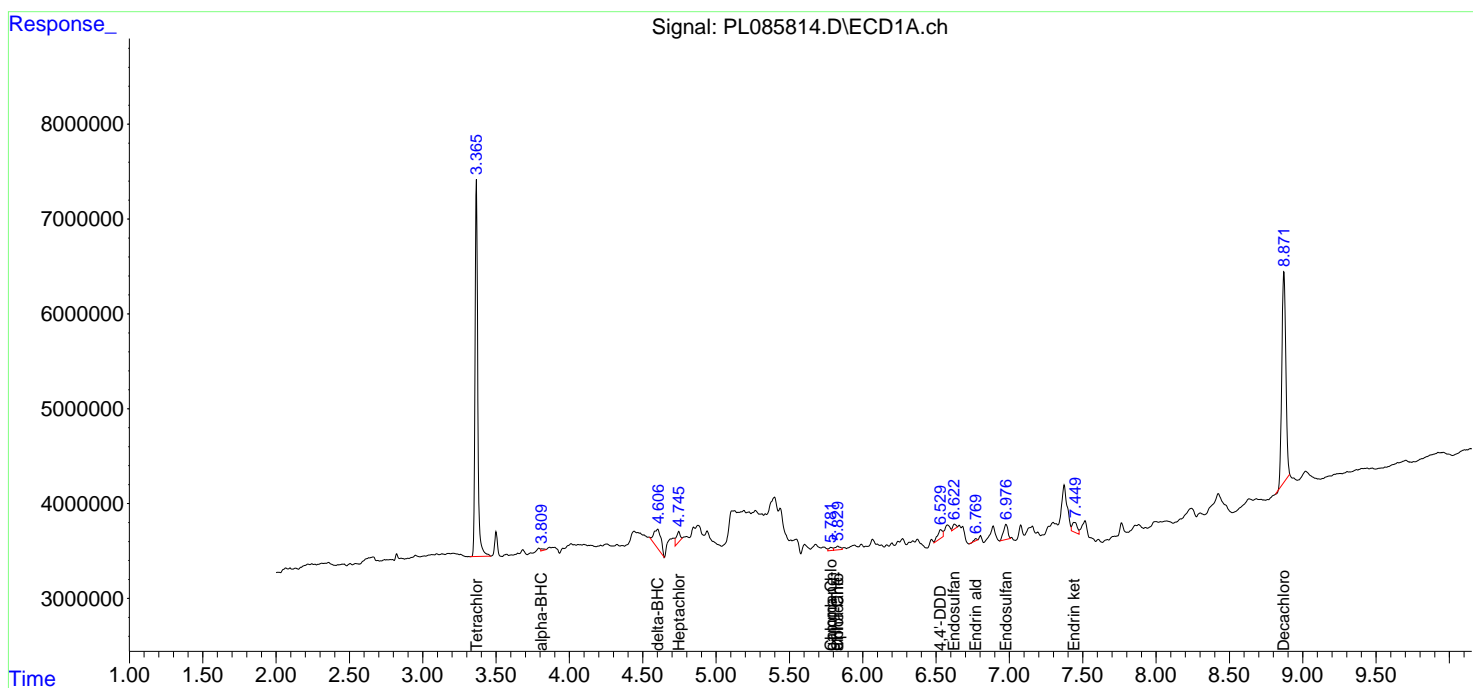
(f)=RT Delta > 1/2 Window (#)=Amounts differ by > 25% (m)=manual int.

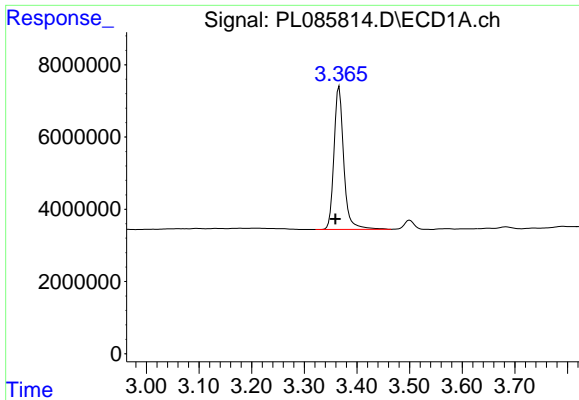
Data Path : Z:\pestpcbsrv\HPCHEM1\ECD_L\Data\PL101023\
 Data File : PL085814.D
 Signal(s) : Signal #1: ECD1A.ch Signal #2: ECD2B.ch
 Acq On : 10 Oct 2023 15:19
 Operator : AR\AJ
 Sample : 04699-01
 Misc : TOX LOD 50PPB SOIL
 ALS Vial : 9 Sample Multiplier: 1

Instrument :
 ECD_L
 ClientSampleId :

Integration File signal 1: autoint1.e
 Integration File signal 2: autoint2.e
 Quant Time: Oct 10 20:40:50 2023
 Quant Method : Z:\pestpcbsrv\HPCHEM1\ECD_L\methods\PL100323.M
 Quant Title : GC Extractables
 QLast Update : Wed Oct 04 05:29:39 2023
 Response via : Initial Calibration
 Integrator: ChemStation

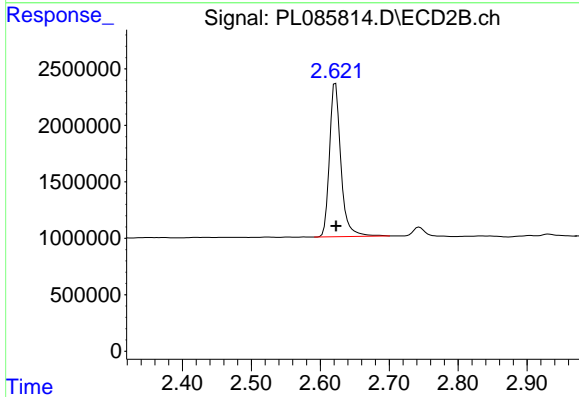
Volume Inj. : 1 µl
 Signal #1 Phase : ZB-MR2 Signal #2 Phase: ZB-MR1
 Signal #1 Info : 30M x 0.32mm x0.2 Signal #2 Info : 30M x 0.32mm x0.5µm



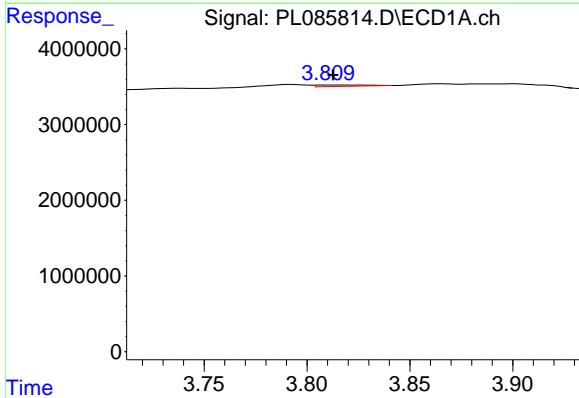


#1 Tetrachloro-m-xylene
 R.T.: 3.366 min
 Delta R.T.: 0.007 min
 Response: 51075888
 Conc: 17.17 ng/ml

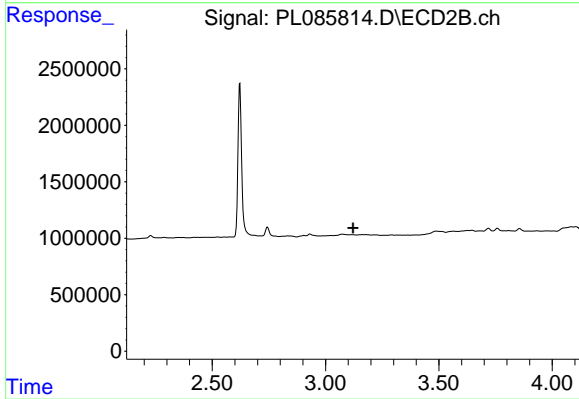
Instrument :
 ECD_L
 ClientSampleId :



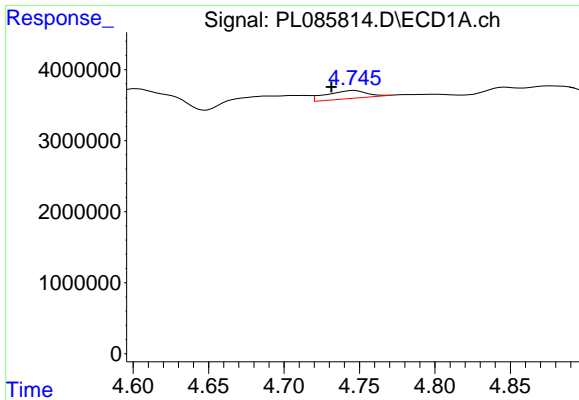
#1 Tetrachloro-m-xylene
 R.T.: 2.622 min
 Delta R.T.: 0.000 min
 Response: 15582802
 Conc: 16.68 ng/ml



#2 alpha-BHC
 R.T.: 3.811 min
 Delta R.T.: -0.001 min
 Response: 295604
 Conc: 0.07 ng/ml



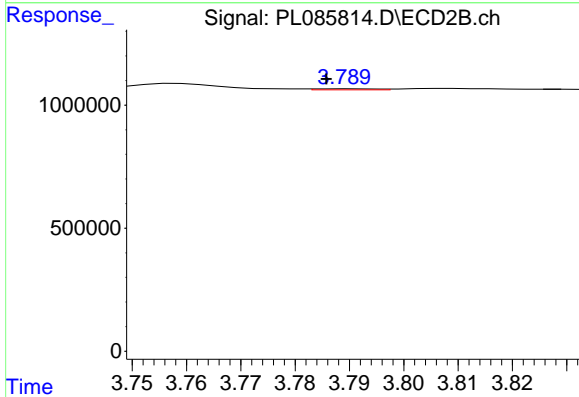
#2 alpha-BHC
 R.T.: 0.000 min
 Exp R.T. : 3.122 min
 Response: 0
 Conc: N.D.



#4 Heptachlor

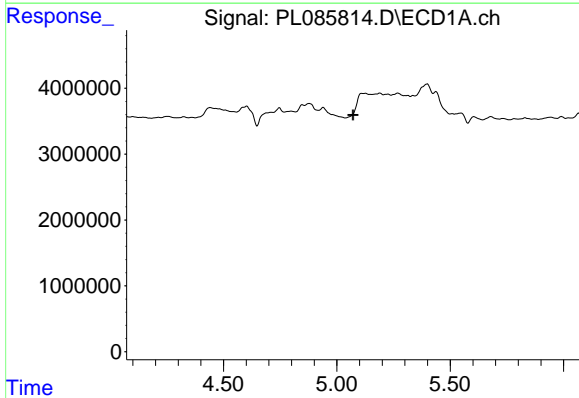
R.T.: 4.746 min
 Delta R.T.: 0.015 min
 Response: 2082769
 Conc: 0.54 ng/ml

Instrument :
 ECD_L
 ClientSampleId :



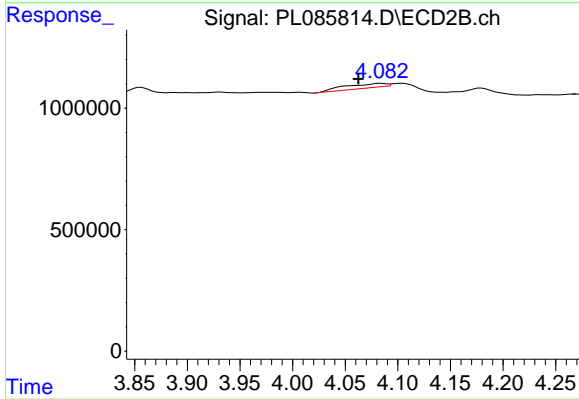
#4 Heptachlor

R.T.: 3.790 min
 Delta R.T.: 0.004 min
 Response: 31782
 Conc: 0.03 ng/ml



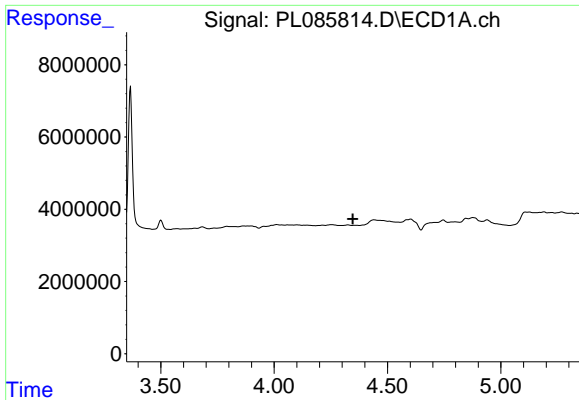
#5 Aldrin

R.T.: 0.000 min
 Exp R.T. : 5.072 min
 Response: 0
 Conc: N.D.



#5 Aldrin

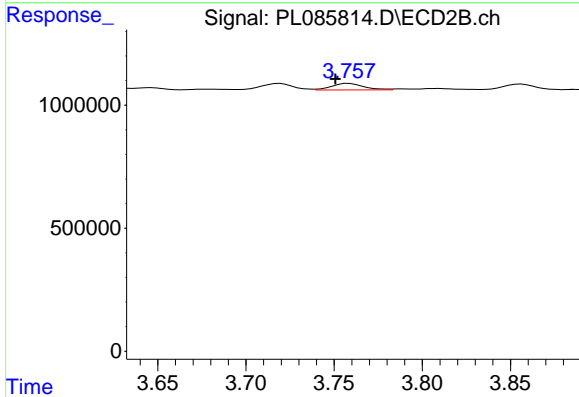
R.T.: 4.084 min
 Delta R.T.: 0.021 min
 Response: 483263
 Conc: 0.43 ng/ml



#6 beta-BHC

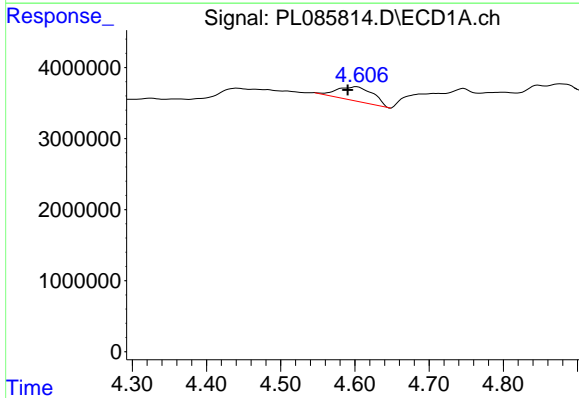
R.T.: 0.000 min
 Exp R.T.: 4.347 min
 Response: 0
 Conc: N.D.

Instrument :
 ECD_L
 ClientSampleId :



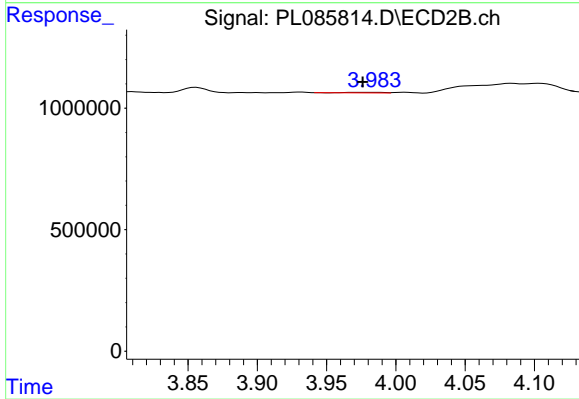
#6 beta-BHC

R.T.: 3.758 min
 Delta R.T.: 0.008 min
 Response: 335404
 Conc: 0.64 ng/ml



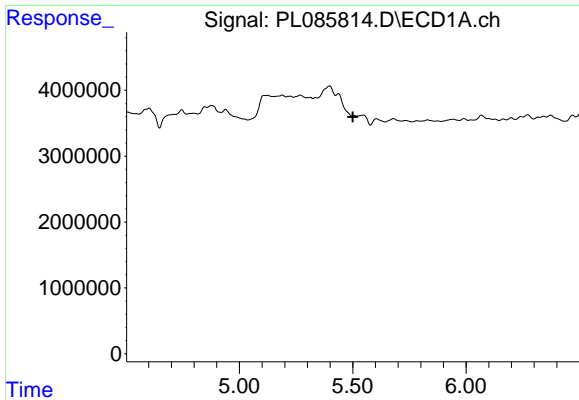
#7 delta-BHC

R.T.: 4.603 min
 Delta R.T.: 0.012 min
 Response: 6840421
 Conc: 1.78 ng/ml



#7 delta-BHC

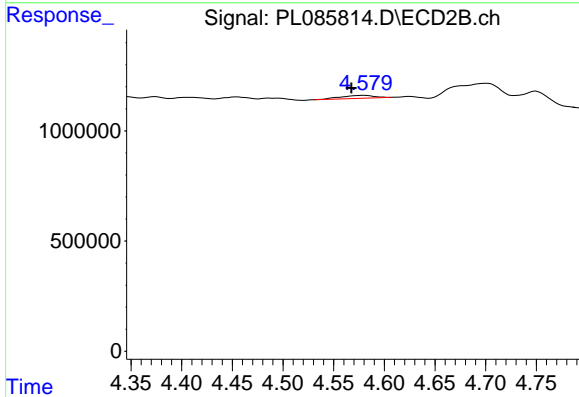
R.T.: 3.972 min
 Delta R.T.: -0.004 min
 Response: 37567
 Conc: 0.03 ng/ml



#8 Heptachlor epoxide

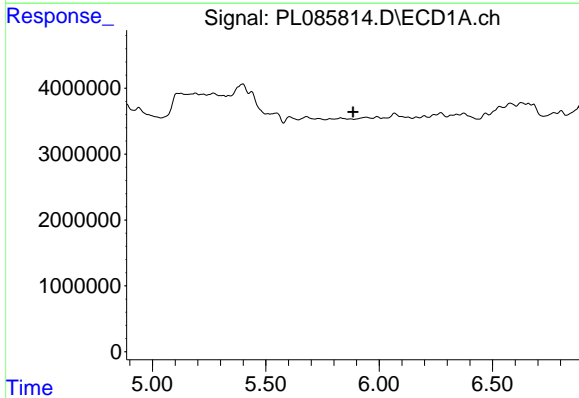
R.T.: 0.000 min
 Exp R.T.: 5.501 min
 Response: 0
 Conc: N.D.

Instrument :
 ECD_L
 ClientSampleId :



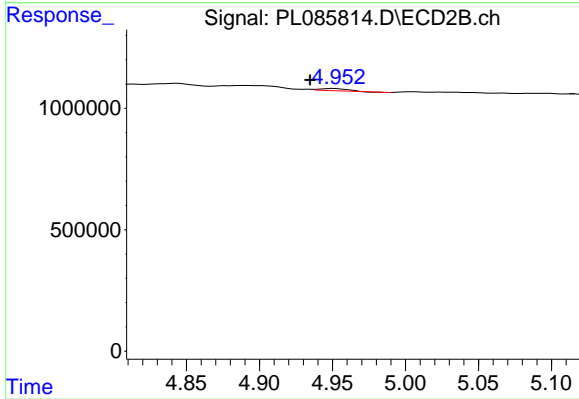
#8 Heptachlor epoxide

R.T.: 4.581 min
 Delta R.T.: 0.013 min
 Response: 294471
 Conc: 0.29 ng/ml



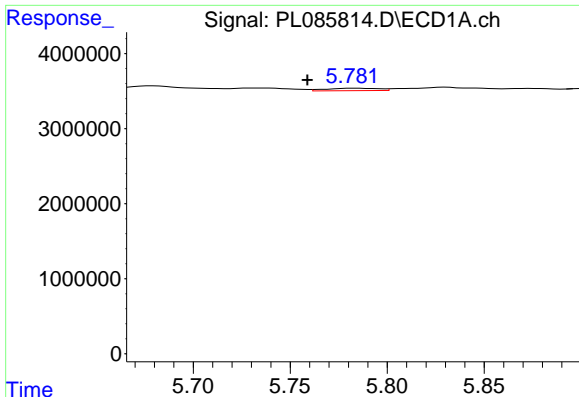
#9 Endosulfan I

R.T.: 0.000 min
 Exp R.T.: 5.885 min
 Response: 0
 Conc: N.D.



#9 Endosulfan I

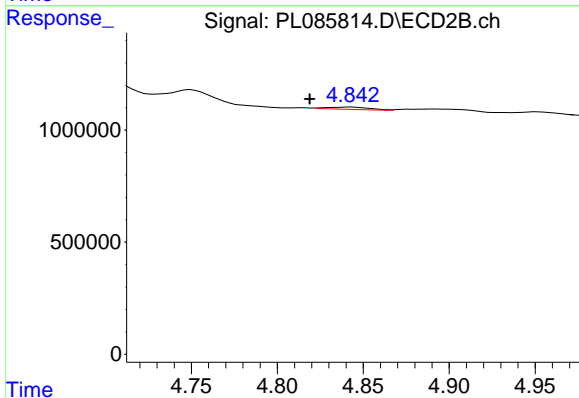
R.T.: 4.951 min
 Delta R.T.: 0.017 min
 Response: 119181
 Conc: 0.11 ng/ml



#10 gamma-Chlordane

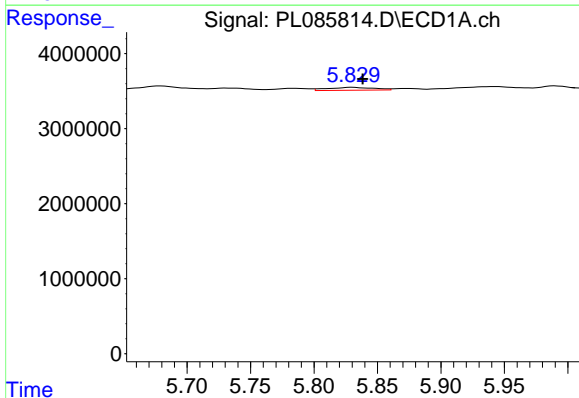
R.T.: 5.783 min
 Delta R.T.: 0.024 min
 Response: 636432
 Conc: 0.19 ng/ml

Instrument :
 ECD_L
 ClientSampleId :



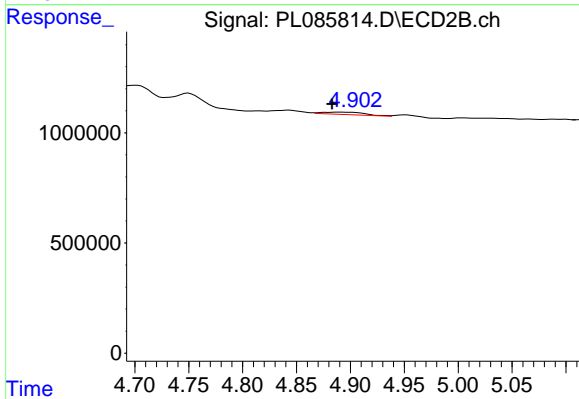
#10 gamma-Chlordane

R.T.: 4.843 min
 Delta R.T.: 0.024 min
 Response: 175779
 Conc: 0.18 ng/ml



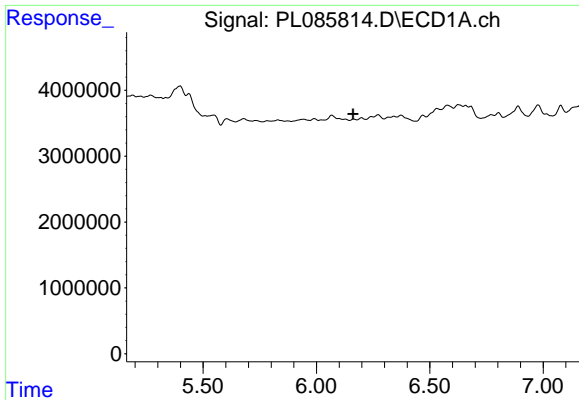
#11 alpha-Chlordane

R.T.: 5.830 min
 Delta R.T.: -0.008 min
 Response: 973063
 Conc: 0.28 ng/ml



#11 alpha-Chlordane

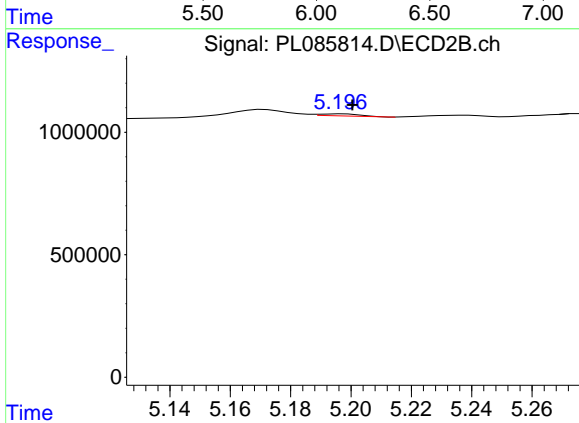
R.T.: 4.891 min
 Delta R.T.: 0.008 min
 Response: 307086
 Conc: 0.28 ng/ml



#13 Dieldrin

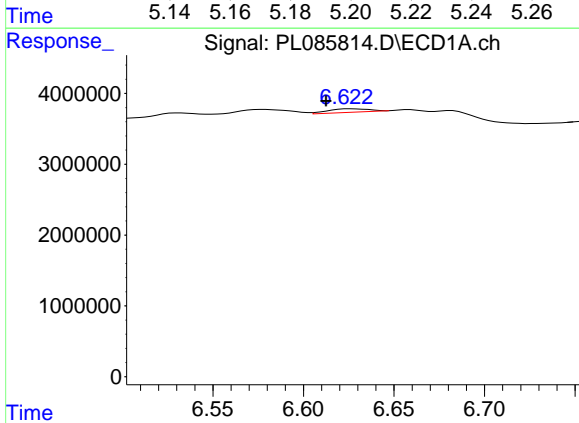
R.T.: 0.000 min
 Exp R.T.: 6.162 min
 Response: 0
 Conc: N.D.

Instrument :
 ECD_L
 ClientSampleId :



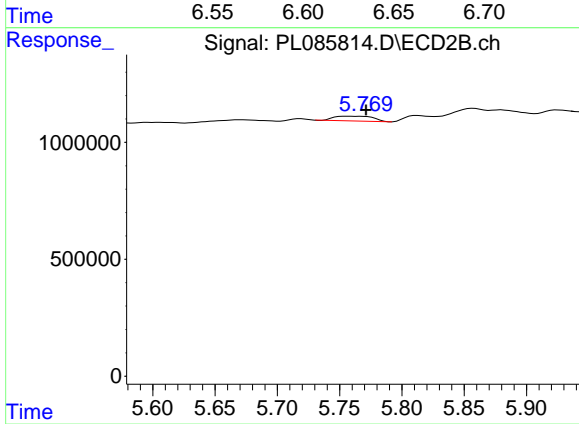
#13 Dieldrin

R.T.: 5.197 min
 Delta R.T.: -0.003 min
 Response: 76121
 Conc: 0.08 ng/ml



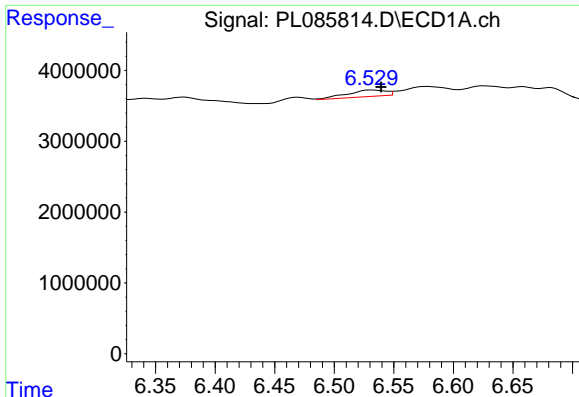
#15 Endosulfan II

R.T.: 6.625 min
 Delta R.T.: 0.013 min
 Response: 783660
 Conc: 0.28 ng/ml



#15 Endosulfan II

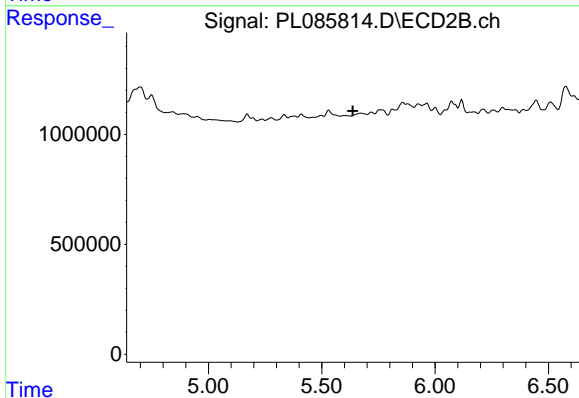
R.T.: 5.757 min
 Delta R.T.: -0.014 min
 Response: 446687
 Conc: 0.47 ng/ml



#16 4,4'-DDD

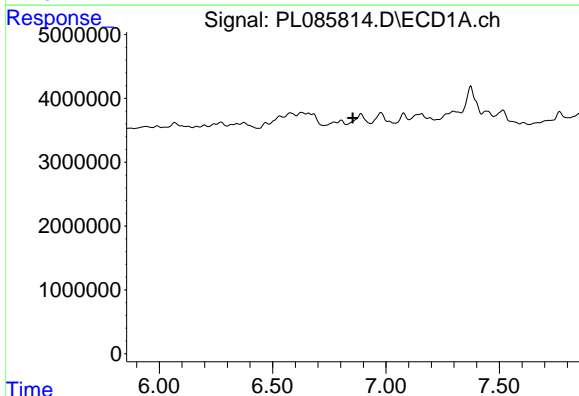
R.T.: 6.531 min
 Delta R.T.: -0.008 min
 Response: 2106693
 Conc: 1.05 ng/ml

Instrument :
 ECD_L
 ClientSampleId :



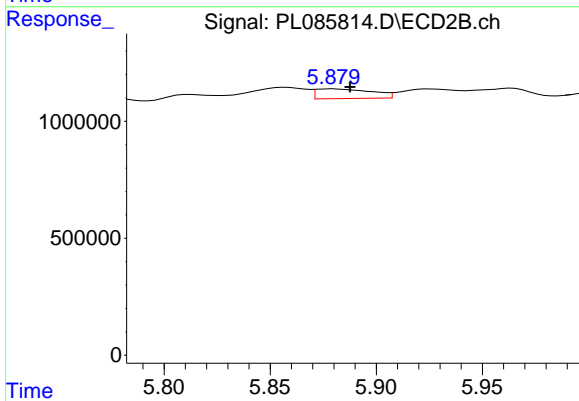
#16 4,4'-DDD

R.T.: 0.000 min
 Exp R.T. : 5.637 min
 Response: 0
 Conc: N.D.



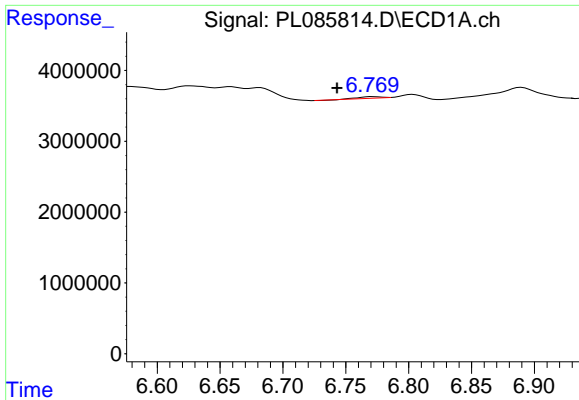
#17 4,4'-DDT

R.T.: 0.000 min
 Exp R.T. : 6.854 min
 Response: 0
 Conc: N.D.



#17 4,4'-DDT

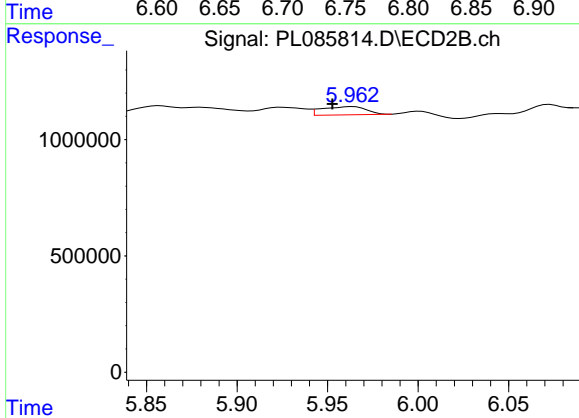
R.T.: 5.880 min
 Delta R.T.: -0.008 min
 Response: 758304
 Conc: 0.96 ng/ml



#18 Endrin aldehyde

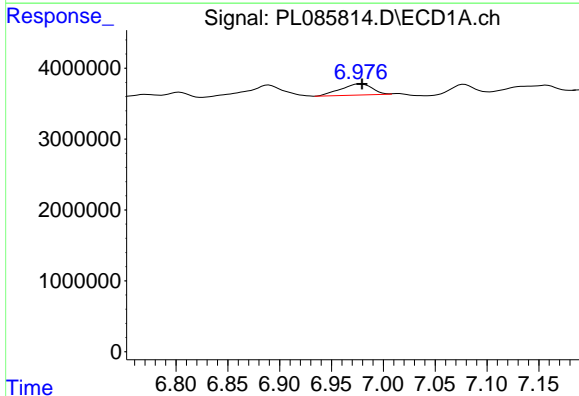
R.T.: 6.771 min
 Delta R.T.: 0.028 min
 Response: 271063
 Conc: 0.13 ng/ml

Instrument :
 ECD_L
 ClientSampleId :



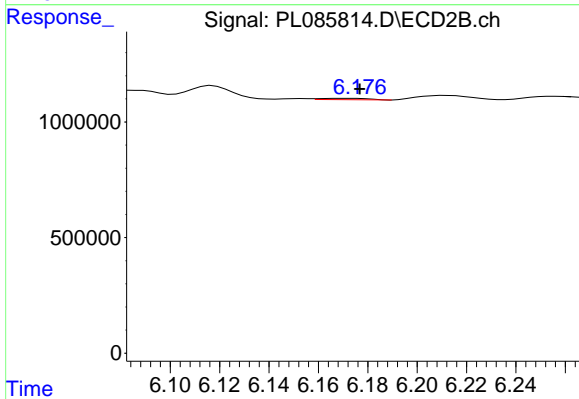
#18 Endrin aldehyde

R.T.: 5.964 min
 Delta R.T.: 0.011 min
 Response: 611426
 Conc: 0.82 ng/ml



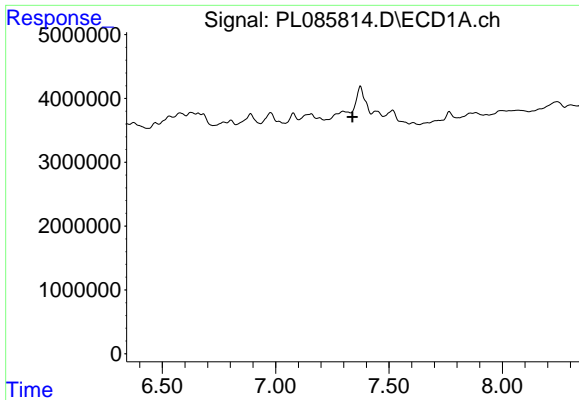
#19 Endosulfan Sulfate

R.T.: 6.978 min
 Delta R.T.: -0.002 min
 Response: 3341209
 Conc: 1.33 ng/ml



#19 Endosulfan Sulfate

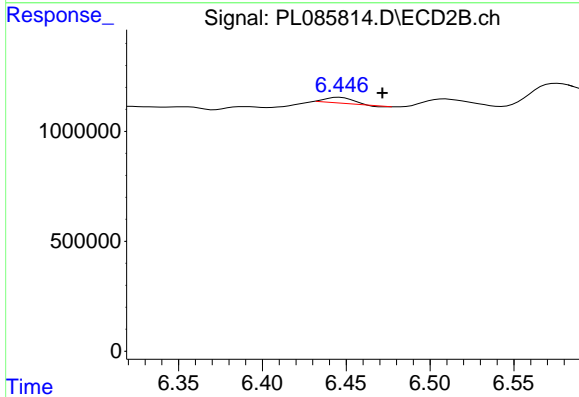
R.T.: 6.171 min
 Delta R.T.: -0.006 min
 Response: 77883
 Conc: 0.09 ng/ml



#20 Methoxychlor

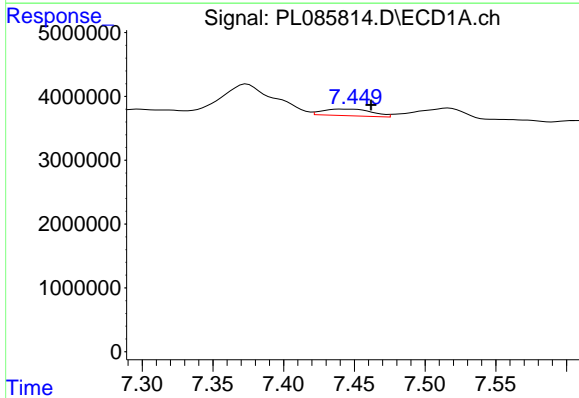
R.T.: 0.000 min
 Exp R.T.: 7.339 min
 Response: 0
 Conc: N.D.

Instrument :
 ECD_L
 ClientSampleId :



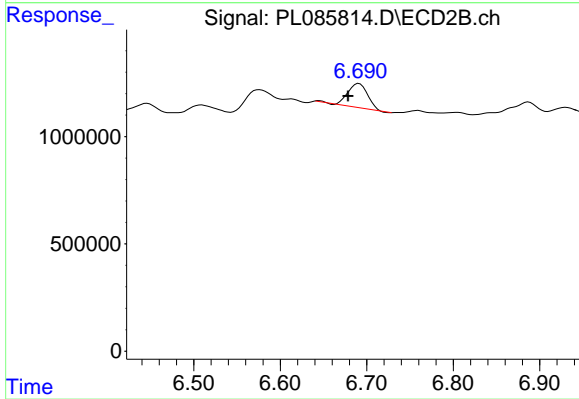
#20 Methoxychlor

R.T.: 6.446 min
 Delta R.T.: -0.026 min
 Response: 278805
 Conc: 0.53 ng/ml



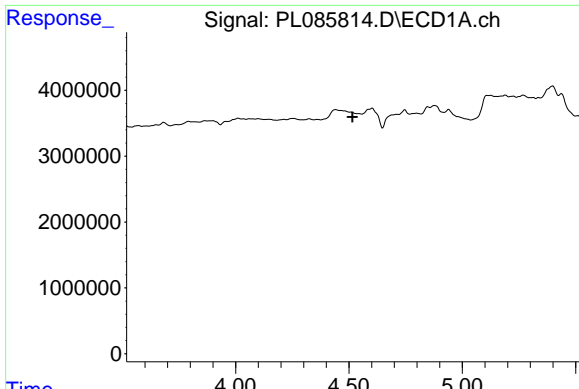
#21 Endrin ketone

R.T.: 7.441 min
 Delta R.T.: -0.021 min
 Response: 2536576
 Conc: 0.88 ng/ml



#21 Endrin ketone

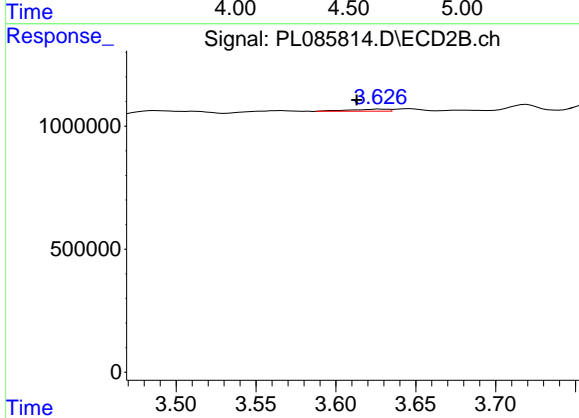
R.T.: 6.691 min
 Delta R.T.: 0.013 min
 Response: 1779733
 Conc: 1.55 ng/ml



#23 Chlordane-1

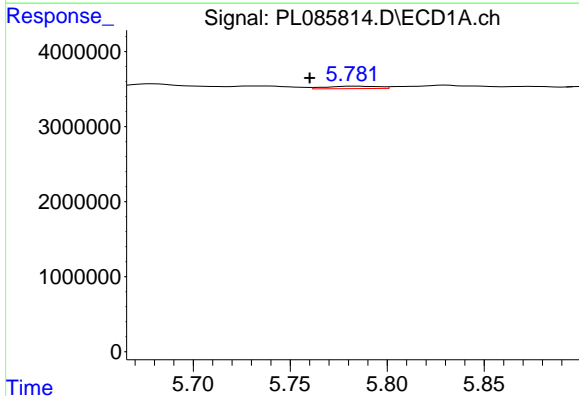
R.T.: 0.000 min
 Exp R.T.: 4.516 min
 Response: 0
 Conc: N.D.

Instrument :
 ECD_L
 ClientSampleId :



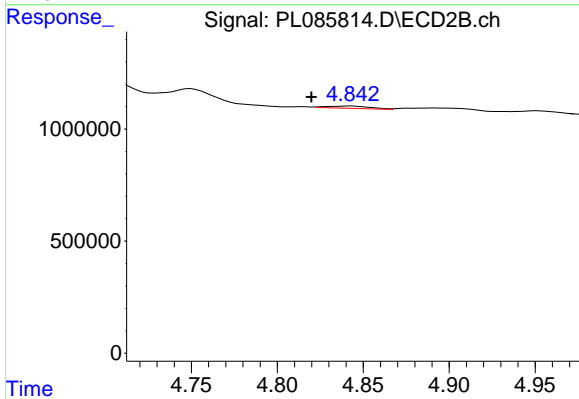
#23 Chlordane-1

R.T.: 3.627 min
 Delta R.T.: 0.014 min
 Response: 142940
 Conc: 4.38 ng/ml



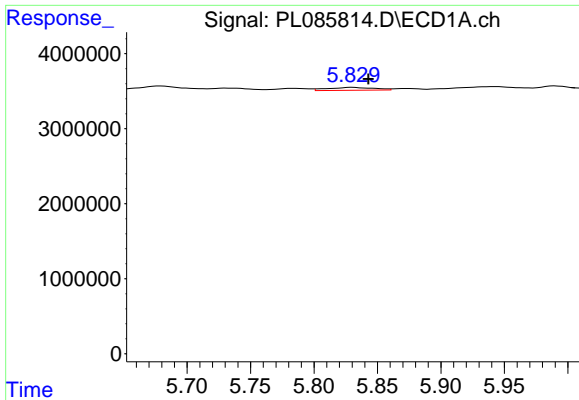
#25 Chlordane-3

R.T.: 5.783 min
 Delta R.T.: 0.023 min
 Response: 636432
 Conc: 1.25 ng/ml



#25 Chlordane-3

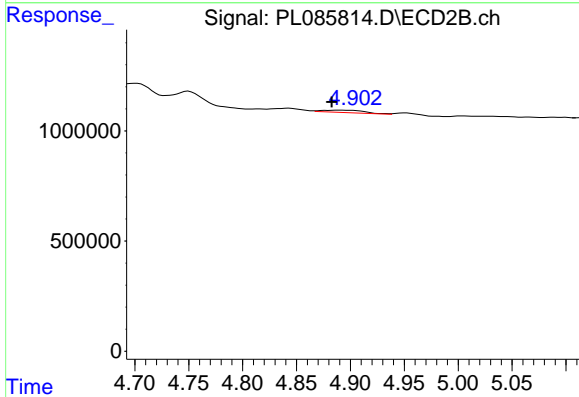
R.T.: 4.843 min
 Delta R.T.: 0.023 min
 Response: 175779
 Conc: 1.74 ng/ml



#26 Chlordane-4

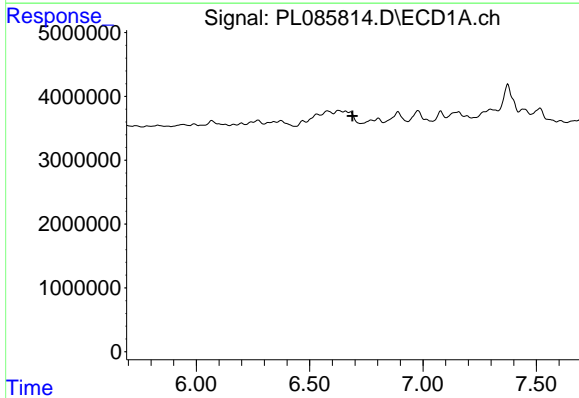
R.T.: 5.830 min
 Delta R.T.: -0.013 min
 Response: 973063
 Conc: 1.53 ng/ml

Instrument :
 ECD_L
 ClientSampleId :



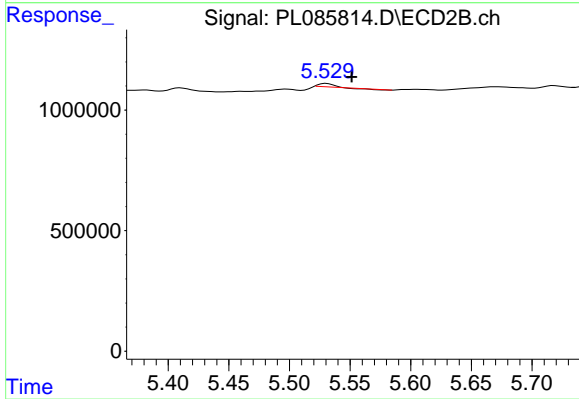
#26 Chlordane-4

R.T.: 4.891 min
 Delta R.T.: 0.008 min
 Response: 307086
 Conc: 2.65 ng/ml



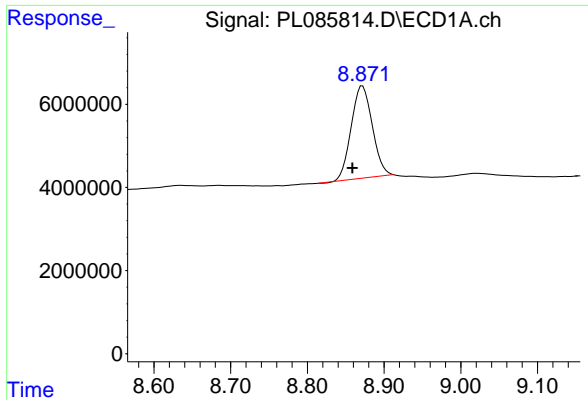
#27 Chlordane-5

R.T.: 0.000 min
 Exp R.T. : 6.689 min
 Response: 0
 Conc: N.D.



#27 Chlordane-5

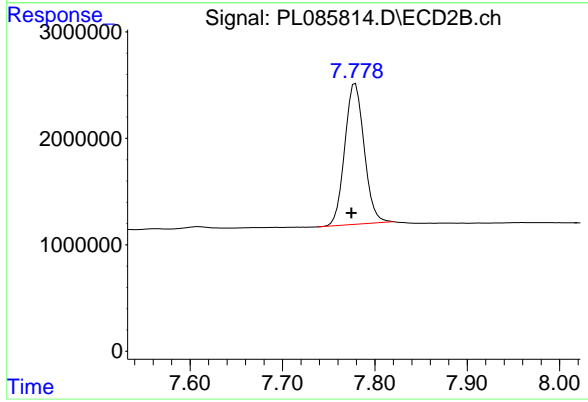
R.T.: 5.530 min
 Delta R.T.: -0.021 min
 Response: 71541
 Conc: 2.57 ng/ml



#28 Decachlorobiphenyl

R.T.: 8.872 min
Delta R.T.: 0.013 min
Response: 42751915
Conc: 19.63 ng/ml

Instrument :
ECD_L
ClientSampleId :



#28 Decachlorobiphenyl

R.T.: 7.779 min
Delta R.T.: 0.004 min
Response: 19318937
Conc: 20.93 ng/ml