

Data Path : Z:\pestpcbsrv\HPCHEM1\ECD_L\Data\PL101118\
 Data File : PL040891.D
 Signal(s) : Signal #1: ECD1A.ch Signal #2: ECD2B.ch
 Acq On : 10 Oct 2018 22:21
 Operator : AJ\SJ
 Sample : PTOXICC050
 Misc :
 ALS Vial : 19 Sample Multiplier: 1

Instrument :
 ECD_L
 ClientSampleId :
 PTOXICC050

Integration File signal 1: autoint1.e
 Integration File signal 2: autoint2.e
 Quant Time: Oct 11 03:22:26 2018
 Quant Method : Z:\pestpcbsrv\HPCHEM1\ECD_L\methods\LTX101118.M
 Quant Title : GC Extractables
 QLast Update : Thu Oct 11 03:21:29 2018
 Response via : Initial Calibration
 Integrator: ChemStation

Volume Inj. : 2 µl
 Signal #1 Phase : Rtx-CLPesticide 1 Signal #2 Phase: Rtx-CLPesticide 1
 Signal #1 Info : 30M x 0.32mm x0.3 Signal #2 Info : 30M x 0.32mm x 0.25µm

Compound	RT#1	RT#2	Resp#1	Resp#2	ng/ml	ng/ml

System Monitoring Compounds						
1) SA Tetrachlo...	3.480	4.104	28280745	14389731	4.891	4.986
7) SA Decachlor...	8.233	9.233	32154709	15085874	5.926	5.776
Target Compounds						
2) Toxaphene-1	5.738	6.450	2489511	354061	53.979	50.056
3) Toxaphene-2	6.340	6.808	5867099	915291	52.148	58.415
4) Toxaphene-3	6.726	7.291	1638257	4207922	39.897	57.381 #
5) Toxaphene-4	6.939	7.378	3583127	2490149	46.760	55.736
6) Toxaphene-5	7.072	7.519	7208939	1154454	57.744	54.941

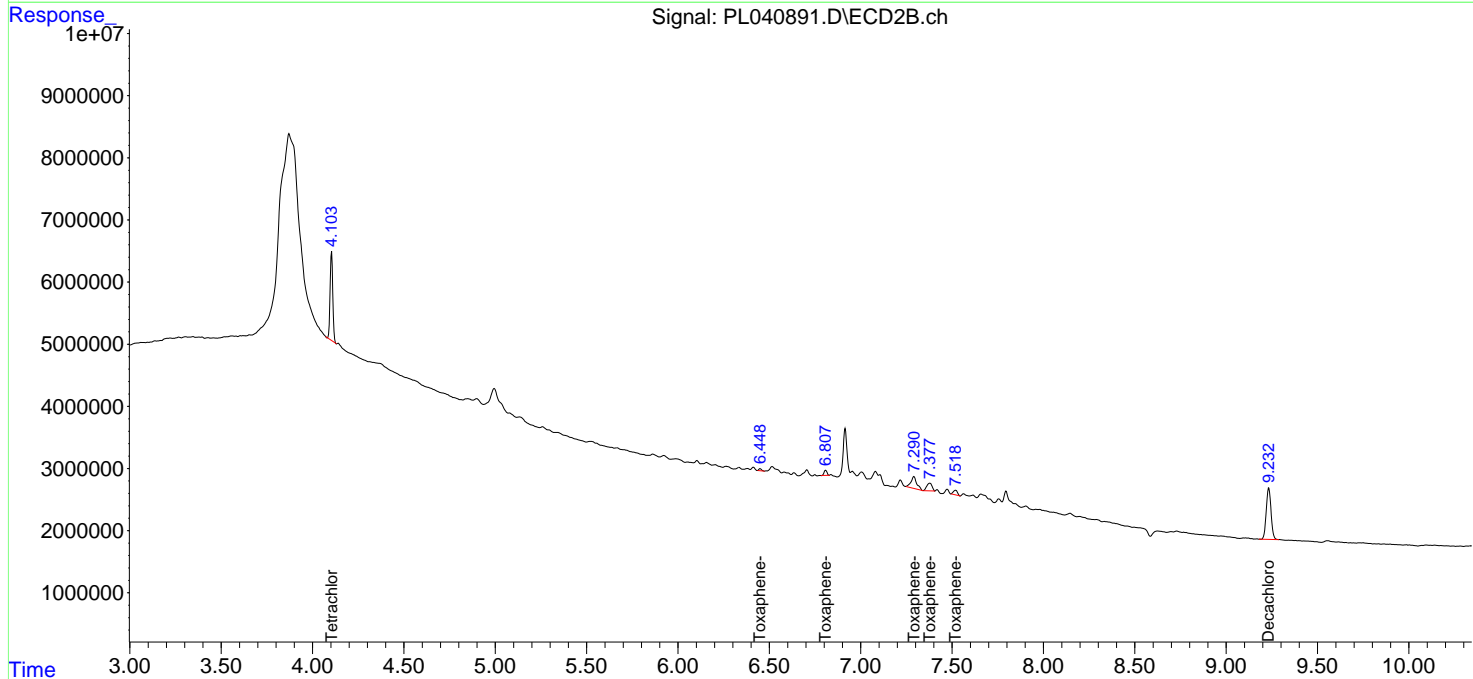
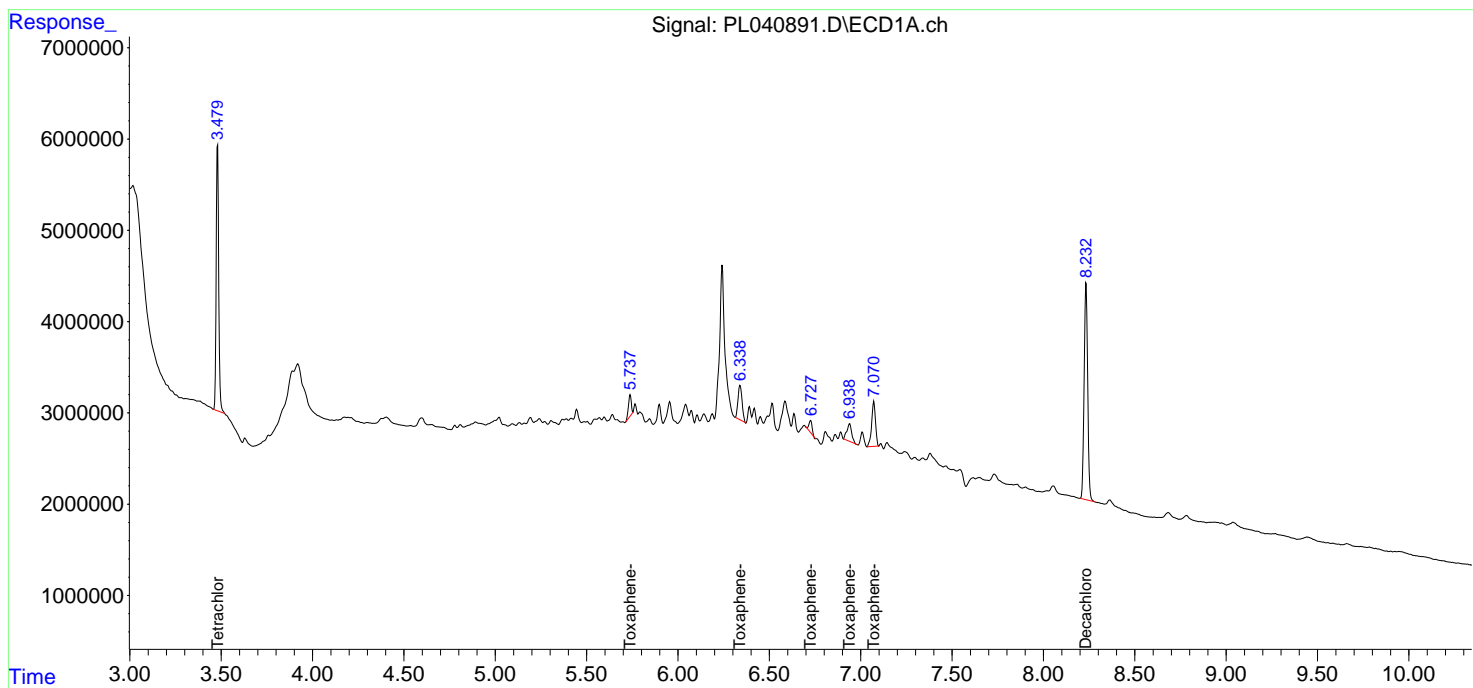
(f)=RT Delta > 1/2 Window (#)=Amounts differ by > 25% (m)=manual int.

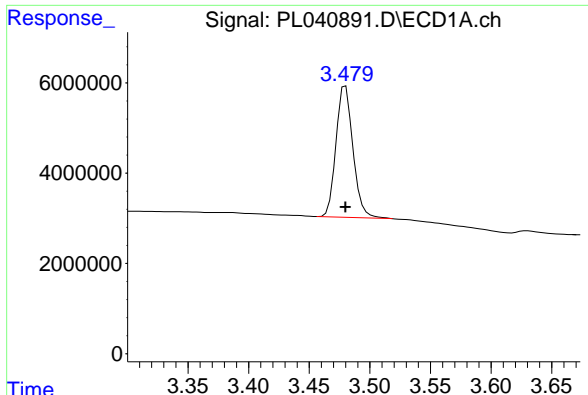
Data Path : Z:\pestpcbsrv\HPCHEM1\ECD_L\Data\PL101118\
 Data File : PL040891.D
 Signal(s) : Signal #1: ECD1A.ch Signal #2: ECD2B.ch
 Acq On : 10 Oct 2018 22:21
 Operator : AJ\SJ
 Sample : PTOXICC050
 Misc :
 ALS Vial : 19 Sample Multiplier: 1

Instrument :
 ECD_L
 ClientSampleID :
 PTOXICC050

Integration File signal 1: autoint1.e
 Integration File signal 2: autoint2.e
 Quant Time: Oct 11 03:22:26 2018
 Quant Method : Z:\pestpcbsrv\HPCHEM1\ECD_L\methods\LTX101118.M
 Quant Title : GC Extractables
 QLast Update : Thu Oct 11 03:21:29 2018
 Response via : Initial Calibration
 Integrator: ChemStation

Volume Inj. : 2 µl
 Signal #1 Phase : Rtx-CLPesticide 1 Signal #2 Phase: Rtx-CLPesticide 1
 Signal #1 Info : 30M x 0.32mm x 0.3 Signal #2 Info : 30M x 0.32mm x 0.25µm

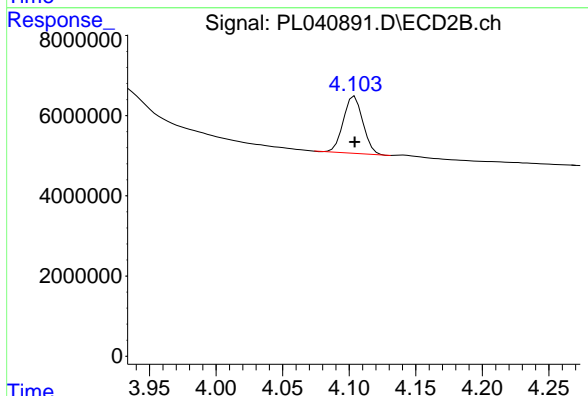




#1 Tetrachloro-m-xylene

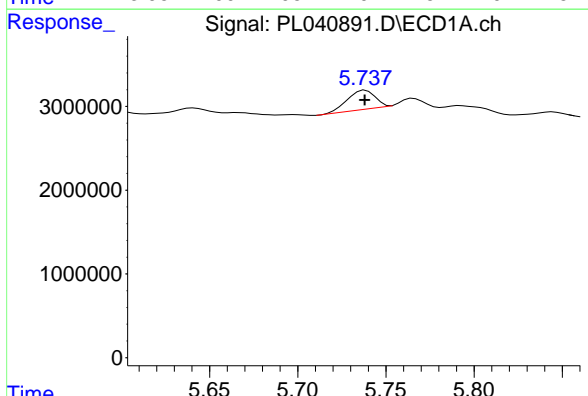
R.T.: 3.480 min
 Delta R.T.: 0.000 min
 Response: 28280745
 Conc: 4.89 ng/ml

Instrument :
 ECD_L
 ClientSampleId :
 PTOXIC050



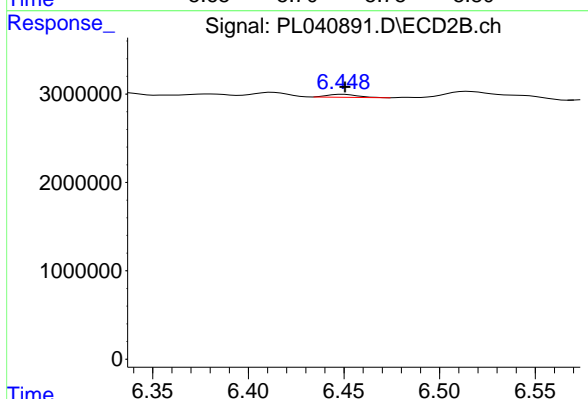
#1 Tetrachloro-m-xylene

R.T.: 4.104 min
 Delta R.T.: 0.000 min
 Response: 14389731
 Conc: 4.99 ng/ml



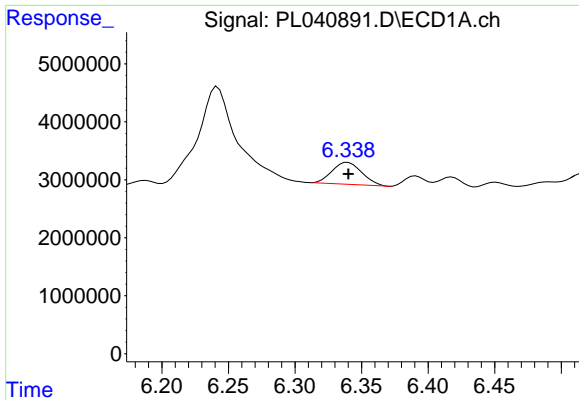
#2 Toxaphene-1

R.T.: 5.738 min
 Delta R.T.: 0.000 min
 Response: 2489511
 Conc: 53.98 ng/ml



#2 Toxaphene-1

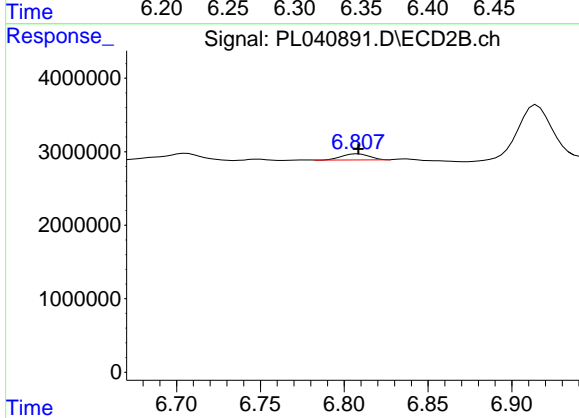
R.T.: 6.450 min
 Delta R.T.: 0.000 min
 Response: 354061
 Conc: 50.06 ng/ml



#3 Toxaphene-2

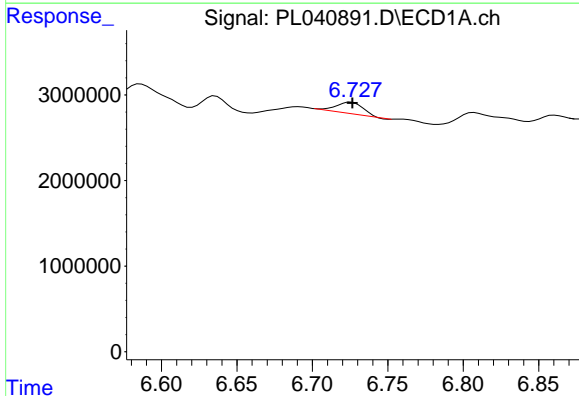
R.T.: 6.340 min
 Delta R.T.: 0.000 min
 Response: 5867099
 Conc: 52.15 ng/ml

Instrument :
 ECD_L
 ClientSampleId :
 PTOXICC050



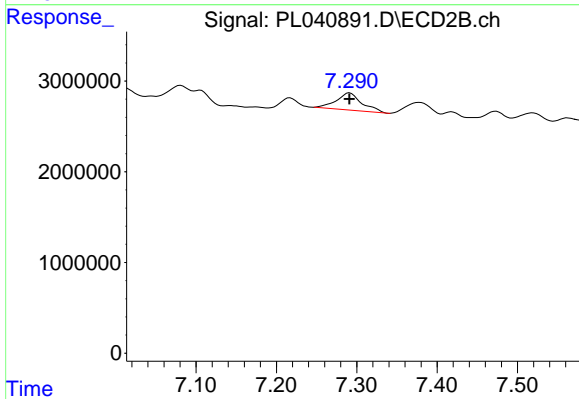
#3 Toxaphene-2

R.T.: 6.808 min
 Delta R.T.: 0.000 min
 Response: 915291
 Conc: 58.42 ng/ml



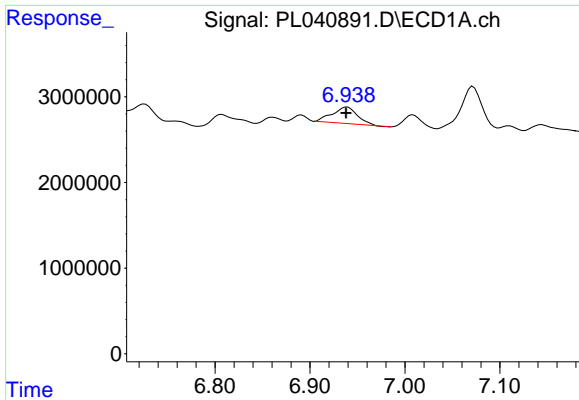
#4 Toxaphene-3

R.T.: 6.726 min
 Delta R.T.: 0.000 min
 Response: 1638257
 Conc: 39.90 ng/ml



#4 Toxaphene-3

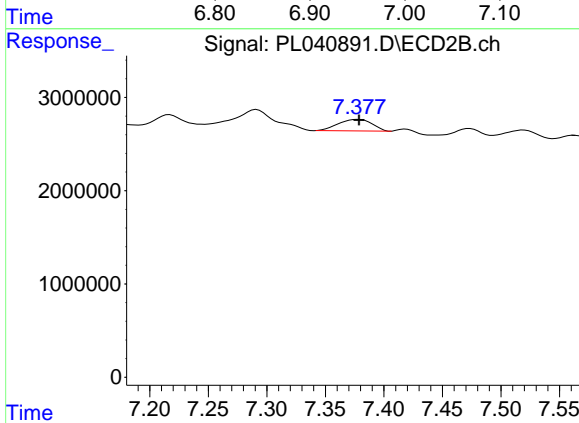
R.T.: 7.291 min
 Delta R.T.: 0.000 min
 Response: 4207922
 Conc: 57.38 ng/ml



#5 Toxaphene-4

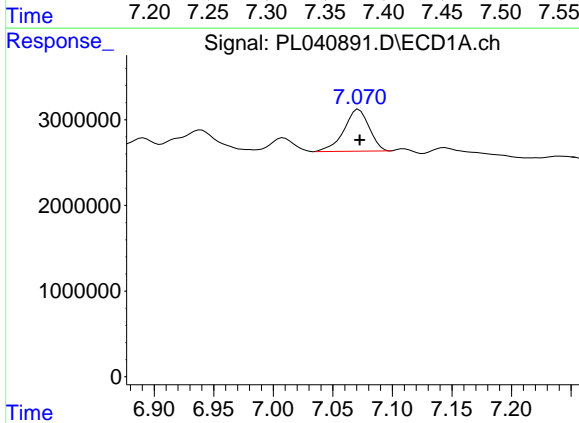
R.T.: 6.939 min
 Delta R.T.: 0.001 min
 Response: 3583127
 Conc: 46.76 ng/ml

Instrument :
 ECD_L
 ClientSampleId :
 PTOXIC050



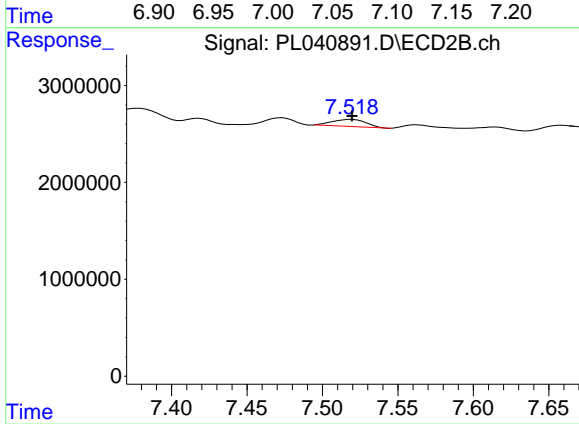
#5 Toxaphene-4

R.T.: 7.378 min
 Delta R.T.: 0.000 min
 Response: 2490149
 Conc: 55.74 ng/ml



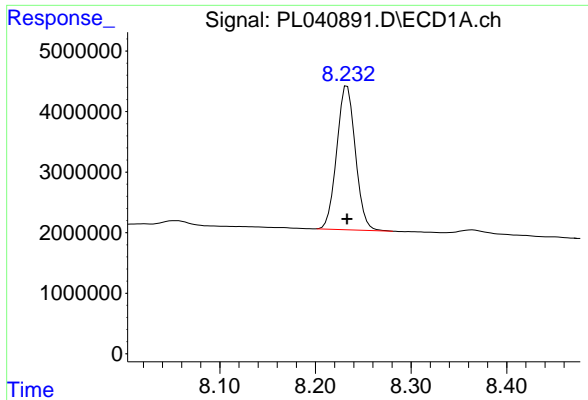
#6 Toxaphene-5

R.T.: 7.072 min
 Delta R.T.: 0.000 min
 Response: 7208939
 Conc: 57.74 ng/ml



#6 Toxaphene-5

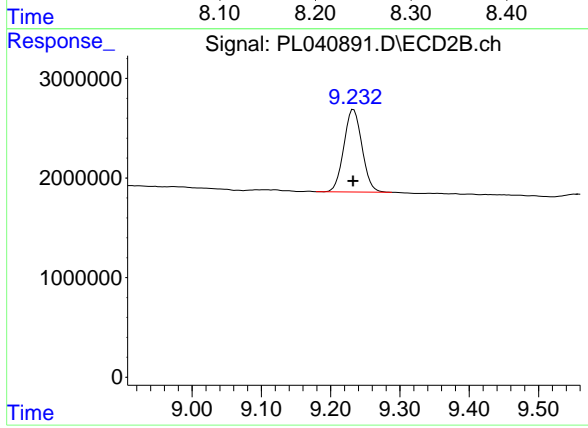
R.T.: 7.519 min
 Delta R.T.: 0.000 min
 Response: 1154454
 Conc: 54.94 ng/ml



#7 Decachlorobiphenyl

R.T.: 8.233 min
Delta R.T.: 0.000 min
Response: 32154709
Conc: 5.93 ng/ml

Instrument :
ECD_L
ClientSampleId :
PTOXICC050



#7 Decachlorobiphenyl

R.T.: 9.233 min
Delta R.T.: 0.000 min
Response: 15085874
Conc: 5.78 ng/ml