

Data Path : Z:\pestpcbsrv\HPCHEM1\ECD\_L\Data\PL101120\  
 Data File : PL062195.D  
 Signal(s) : Signal #1: ECD1A.ch Signal #2: ECD2B.ch  
 Acq On : 11 Oct 2020 20:49  
 Operator : DD\AJ  
 Sample : MDL-TOX-12  
 Misc :  
 ALS Vial : 50 Sample Multiplier: 1

Instrument :  
 ECD\_L  
 ClientSampleId :

Integration File signal 1: autoint1.e  
 Integration File signal 2: autoint2.e  
 Quant Time: Oct 12 08:27:11 2020  
 Quant Method : Z:\pestpcbsrv\HPCHEM1\ECD\_L\methods\PL100920CLP.M  
 Quant Title : GC Extractables  
 QLast Update : Sat Oct 10 05:27:24 2020  
 Response via : Initial Calibration  
 Integrator: ChemStation

Volume Inj. : 1 µl  
 Signal #1 Phase : ZB-MR2 Signal #2 Phase: ZB-MR1  
 Signal #1 Info : 30M x 0.32mm x0.2 Signal #2 Info : 30M x 0.32mm x 0.50µm

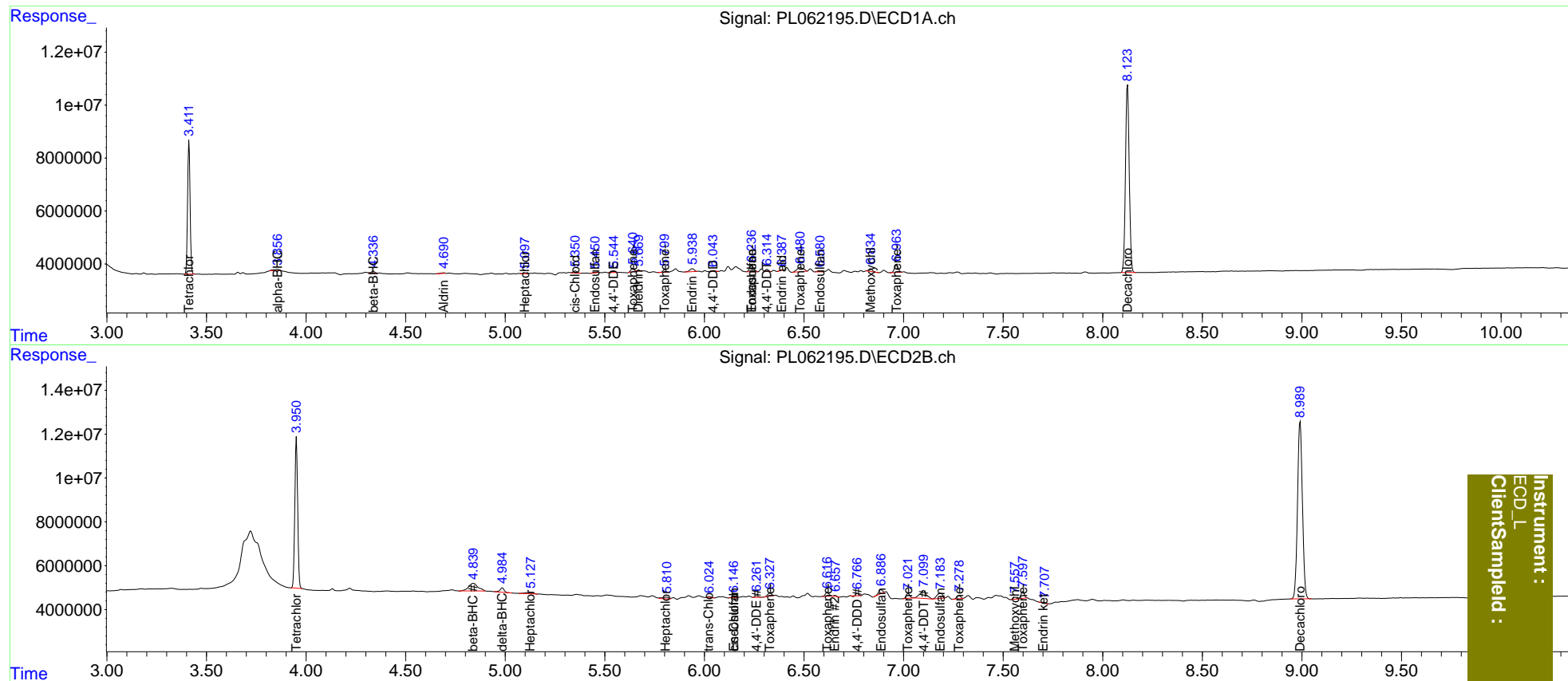
Compound	RT#1	RT#2	Resp#1	Resp#2	ng/ml	ng/ml
-----						
System Monitoring Compounds						
1) SA Tetrachlo...	3.412	3.952	43607457	68038161	24.456	23.873
27) SA Decachlor...	8.124	8.991	92913894	138.0E6	48.877	49.648
Target Compounds						
2) A alpha-BHC	3.857	4.362	1057239	1636	0.433	<MDL #
3) MA gamma-BHC...	4.142	4.626	47288	54086	<MDL	<MDL #
4) MA Heptachlor	0.000	5.126	0	1750498	N.D.	0.469
5) MB Aldrin	4.692f	5.460f	314601	1481	0.172	<MDL #
6) B beta-BHC	4.338f	4.840f	945445	11318932	0.992	6.300 #
7) B delta-BHC	0.000	4.985	0	2784521	N.D.	1.038
8) B Heptachlo...	5.099	5.808	494058	1738861	0.283	0.609 #
9) A Endosulfan I	5.453	6.148	326948	834104	0.202	0.282 #
10) B trans-Chl...	5.321	6.024	68651	473043	<MDL	0.155 #
11) B cis-Chlor...	5.351f	6.148	1055130	834104	0.606	0.270 #
12) B 4,4'-DDE	5.545	6.263	428205	885405	0.261	0.298
13) MA Dieldrin	5.670	6.415	332847	114156	0.187	<MDL #
14) MA Endrin	5.940	6.656	1745844	506049	1.094	0.208 #
15) B Endosulfa...	6.237	6.887	3383379	2315381	2.145	0.880 #
16) A 4,4'-DDD	6.044	6.767	283120	826706	0.203	0.353 #
17) MA 4,4'-DDT	6.315	7.101	673914	8132953	0.509	3.573 #
18) B Endrin al...	6.390	6.961	155244	176192	0.114	<MDL #
19) B Endosulfa...	6.581	7.185	441302	4674134	0.264	1.752 #
20) A Methoxychlor	6.834	7.560	1345797	1049130	1.644	0.789 #
21) B Endrin ke...	7.095	7.702	-65329	423161	N.D.	0.163
22) Toxaphene-1	5.641	6.329	1473222	1833117	138.882	134.341
23) Toxaphene-2	5.800	6.617	1116000	2279330	125.330	124.610
24) Toxaphene-3	6.237	7.023	3383379	2821846	118.627	119.360
25) Toxaphene-4	6.482	7.280	3602206	1942519	120.201	106.232
26) Toxaphene-5	6.964	7.599	3606532	3756761	116.287	118.298
-----						

(f)=RT Delta > 1/2 Window (#)=Amounts differ by > 25% (m)=manual int.

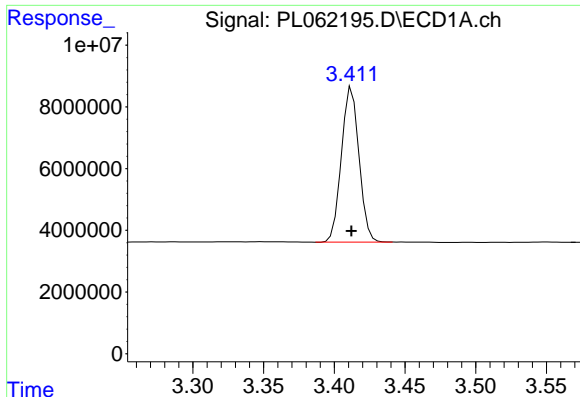
Data Path : Z:\pestpcbsrv\HPCHEM1\ECD\_L\Data\PL101120\  
 Data File : PL062195.D  
 Signal(s) : Signal #1: ECD1A.ch Signal #2: ECD2B.ch  
 Acq On : 11 Oct 2020 20:49  
 Operator : DD\AJ  
 Sample : MDL-TOX-12  
 Misc :  
 ALS Vial : 50 Sample Multiplier: 1

Integration File signal 1: autoint1.e  
 Integration File signal 2: autoint2.e  
 Quant Time: Oct 12 08:27:11 2020  
 Quant Method : Z:\pestpcbsrv\HPCHEM1\ECD\_L\methods\PL100920CLP.M  
 Quant Title : GC Extractables  
 QLast Update : Sat Oct 10 05:27:24 2020  
 Response via : Initial Calibration  
 Integrator: ChemStation

Volume Inj. : 1 µl  
 Signal #1 Phase : ZB-MR2 Signal #2 Phase: ZB-MR1  
 Signal #1 Info : 30M x 0.32mm x0.2 Signal #2 Info : 30M x 0.32mm x 0.50µm



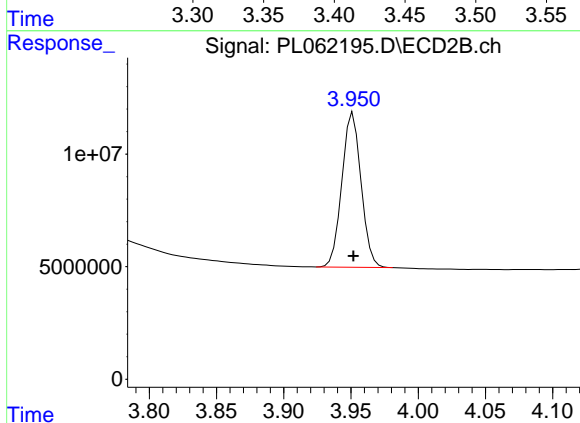
Instrument :  
 ECD\_L  
 ClientSampleId :



#1 Tetrachloro-m-xylene

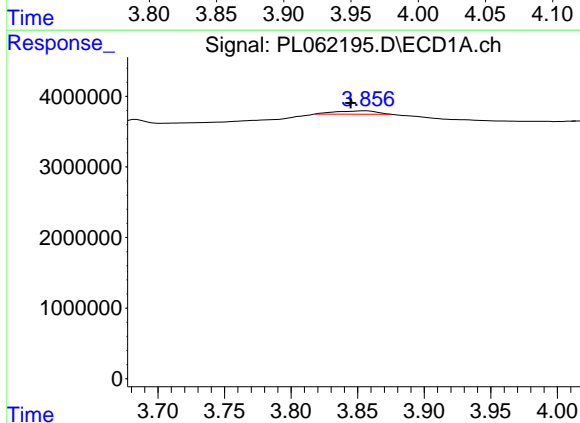
R.T.: 3.412 min  
 Delta R.T.: 0.000 min  
 Response: 43607457  
 Conc: 24.46 ng/ml

Instrument :  
 ECD\_L  
 ClientSampleId :



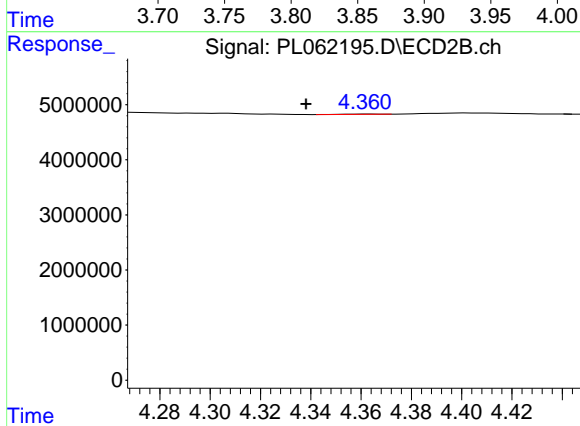
#1 Tetrachloro-m-xylene

R.T.: 3.952 min  
 Delta R.T.: 0.000 min  
 Response: 68038161  
 Conc: 23.87 ng/ml



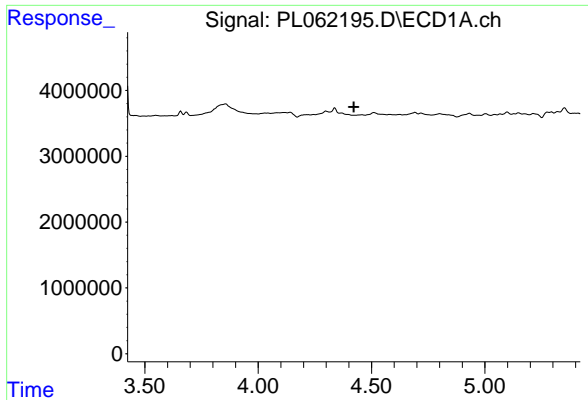
#2 alpha-BHC

R.T.: 3.857 min  
 Delta R.T.: 0.012 min  
 Response: 1057239  
 Conc: 0.43 ng/ml



#2 alpha-BHC

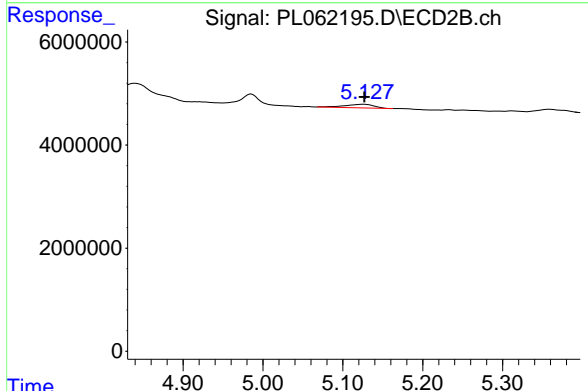
R.T.: 4.362 min  
 Delta R.T.: 0.024 min  
 Response: 1636  
 Conc: N.D.



#4 Heptachlor

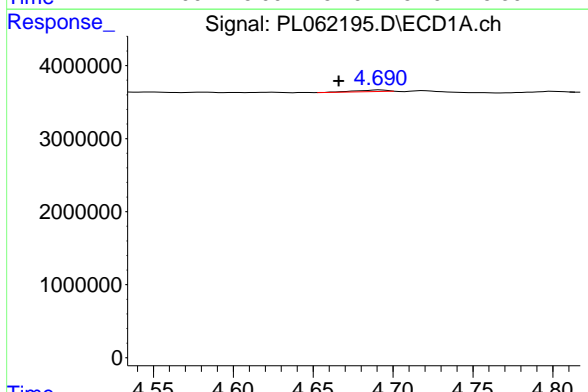
R.T.: 0.000 min  
 Exp R.T.: 4.421 min  
 Response: 0  
 Conc: N.D.

Instrument :  
 ECD\_L  
 ClientSampleId :



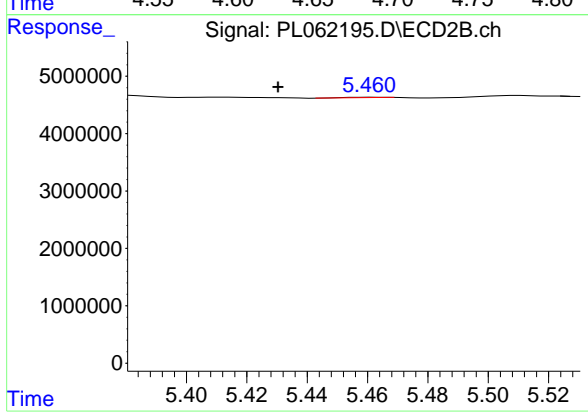
#4 Heptachlor

R.T.: 5.126 min  
 Delta R.T.: 0.000 min  
 Response: 1750498  
 Conc: 0.47 ng/ml



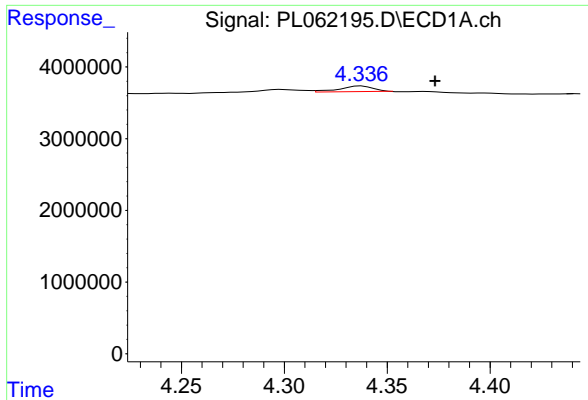
#5 Aldrin

R.T.: 4.692 min  
 Delta R.T.: 0.026 min  
 Response: 314601  
 Conc: 0.17 ng/ml



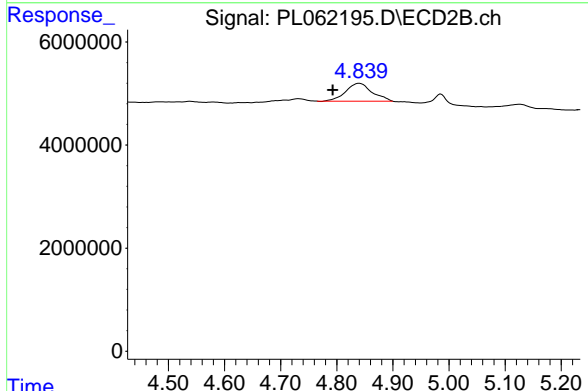
#5 Aldrin

R.T.: 5.460 min  
 Delta R.T.: 0.030 min  
 Response: 1481  
 Conc: N.D.

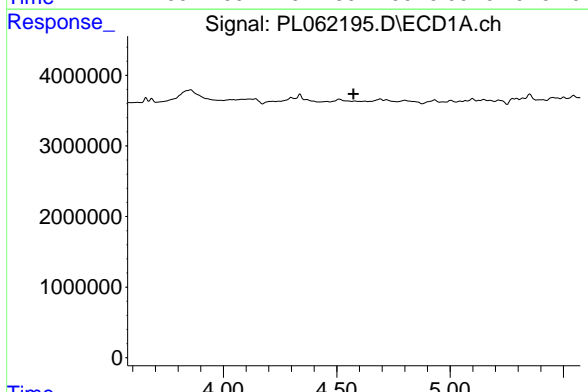


#6 beta-BHC  
 R.T.: 4.338 min  
 Delta R.T.: -0.036 min  
 Response: 945445  
 Conc: 0.99 ng/ml

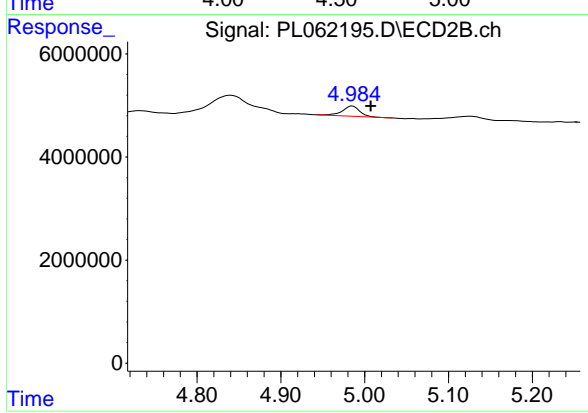
Instrument :  
 ECD\_L  
 ClientSampleId :



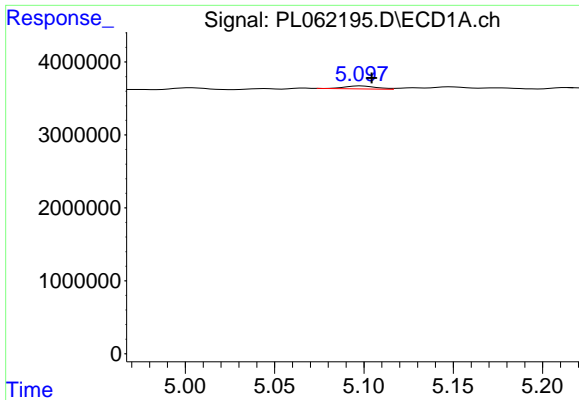
#6 beta-BHC  
 R.T.: 4.840 min  
 Delta R.T.: 0.048 min  
 Response: 11318932  
 Conc: 6.30 ng/ml



#7 delta-BHC  
 R.T.: 0.000 min  
 Exp R.T. : 4.574 min  
 Response: 0  
 Conc: N.D.

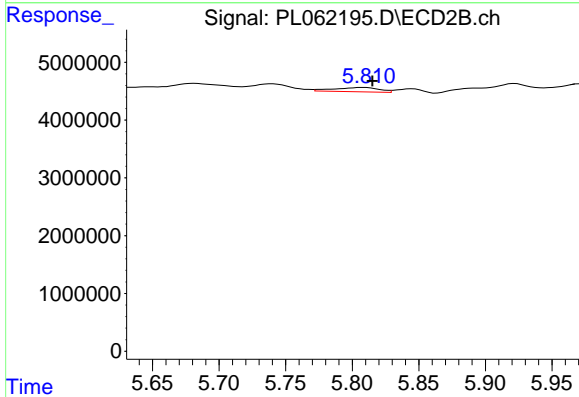


#7 delta-BHC  
 R.T.: 4.985 min  
 Delta R.T.: -0.022 min  
 Response: 2784521  
 Conc: 1.04 ng/ml

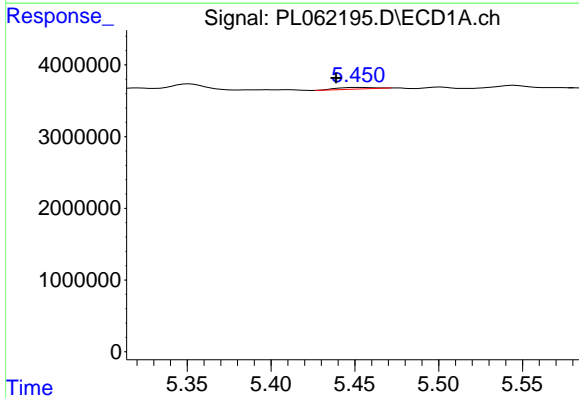


#8 Heptachlor epoxide  
 R.T.: 5.099 min  
 Delta R.T.: -0.006 min  
 Response: 494058  
 Conc: 0.28 ng/ml

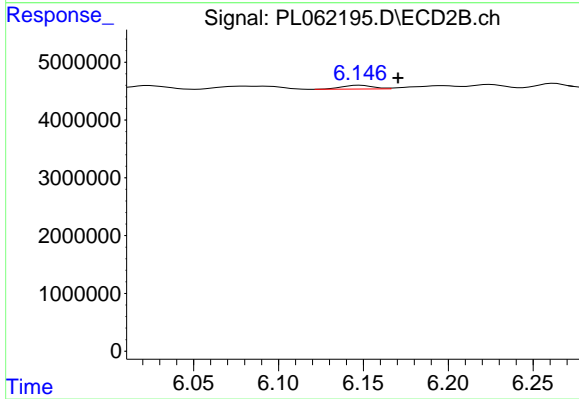
Instrument :  
 ECD\_L  
 ClientSampleId :



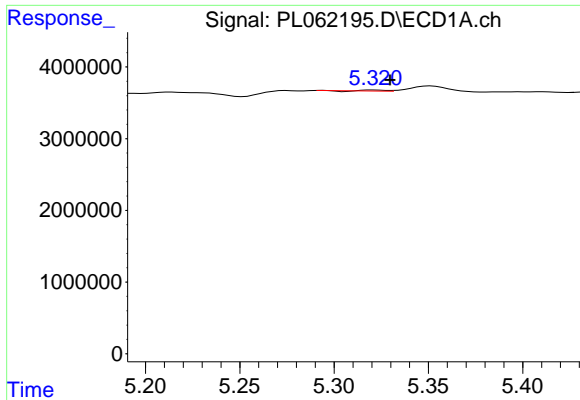
#8 Heptachlor epoxide  
 R.T.: 5.808 min  
 Delta R.T.: -0.007 min  
 Response: 1738861  
 Conc: 0.61 ng/ml



#9 Endosulfan I  
 R.T.: 5.453 min  
 Delta R.T.: 0.014 min  
 Response: 326948  
 Conc: 0.20 ng/ml

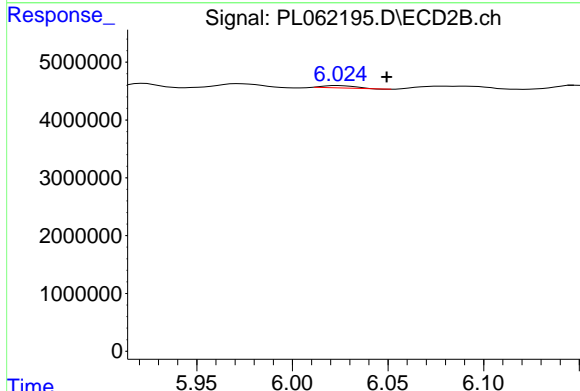


#9 Endosulfan I  
 R.T.: 6.148 min  
 Delta R.T.: -0.022 min  
 Response: 834104  
 Conc: 0.28 ng/ml

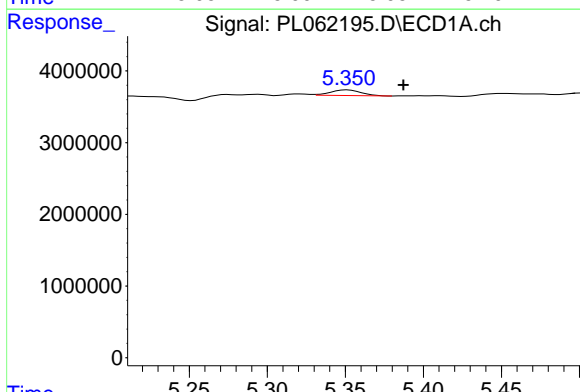


#10 trans-Chlordane  
 R.T.: 5.321 min  
 Delta R.T.: -0.009 min  
 Response: 68651  
 Conc: N.D.

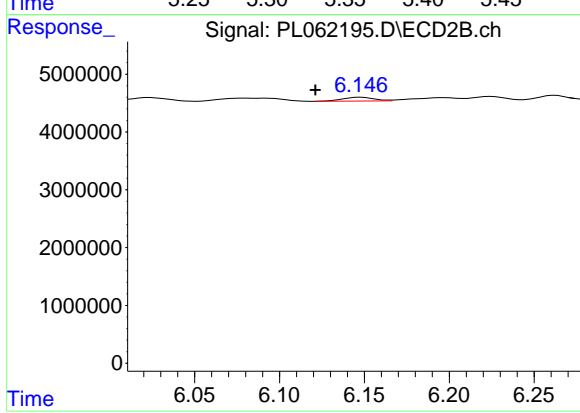
Instrument :  
 ECD\_L  
 ClientSampleId :



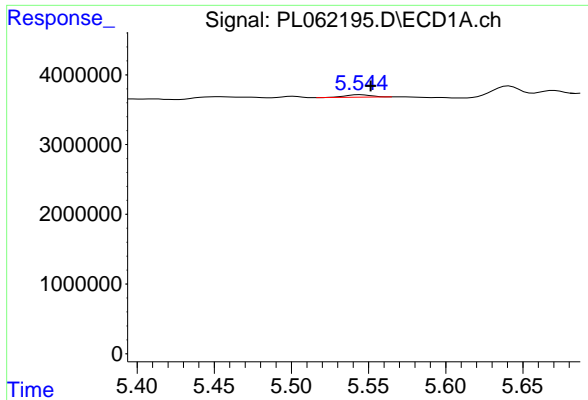
#10 trans-Chlordane  
 R.T.: 6.024 min  
 Delta R.T.: -0.026 min  
 Response: 473043  
 Conc: 0.15 ng/ml



#11 cis-Chlordane  
 R.T.: 5.351 min  
 Delta R.T.: -0.036 min  
 Response: 1055130  
 Conc: 0.61 ng/ml

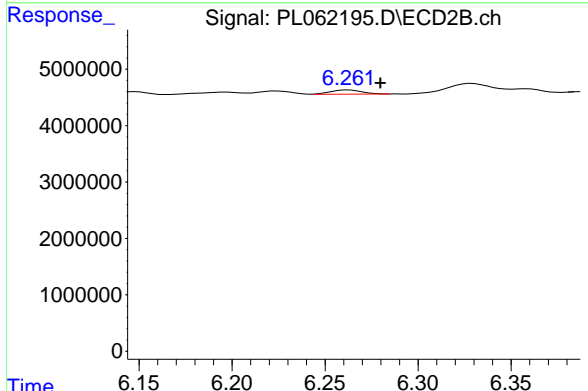


#11 cis-Chlordane  
 R.T.: 6.148 min  
 Delta R.T.: 0.027 min  
 Response: 834104  
 Conc: 0.27 ng/ml

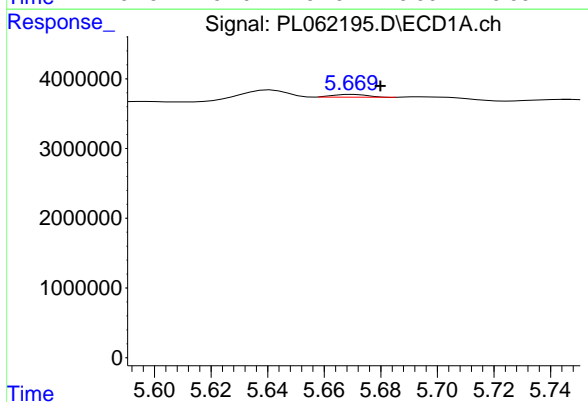


#12 4,4'-DDE  
 R.T.: 5.545 min  
 Delta R.T.: -0.007 min  
 Response: 428205  
 Conc: 0.26 ng/ml

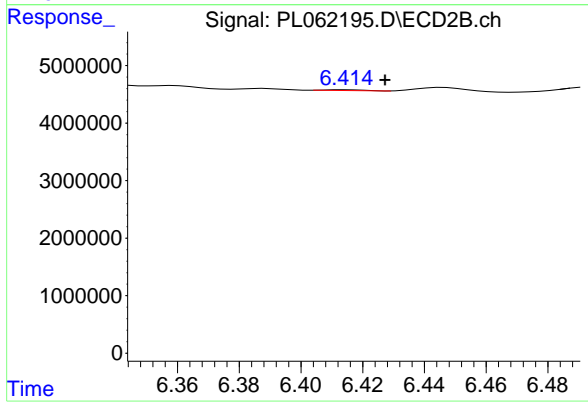
Instrument :  
 ECD\_L  
 ClientSampleId :



#12 4,4'-DDE  
 R.T.: 6.263 min  
 Delta R.T.: -0.017 min  
 Response: 885405  
 Conc: 0.30 ng/ml

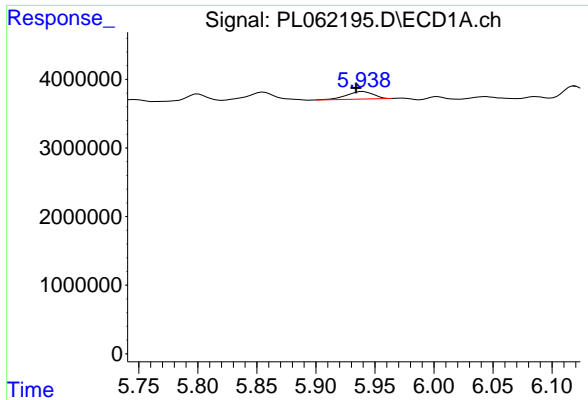


#13 Dieldrin  
 R.T.: 5.670 min  
 Delta R.T.: -0.010 min  
 Response: 332847  
 Conc: 0.19 ng/ml



#13 Dieldrin  
 R.T.: 6.415 min  
 Delta R.T.: -0.013 min  
 Response: 114156  
 Conc: N.D.

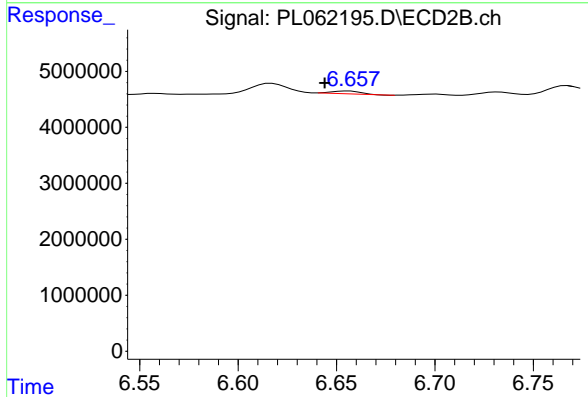




#14 Endrin

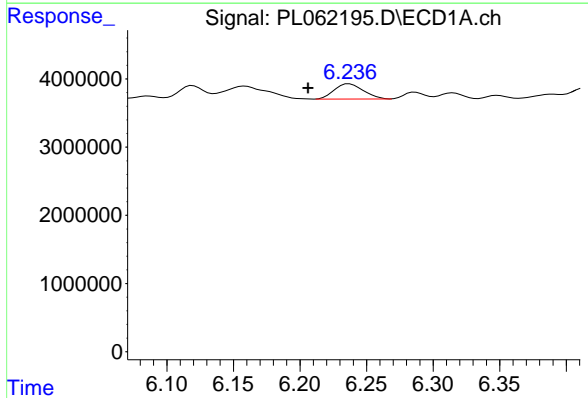
R.T.: 5.940 min  
 Delta R.T.: 0.006 min  
 Response: 1745844  
 Conc: 1.09 ng/ml

Instrument :  
 ECD\_L  
 ClientSampled :



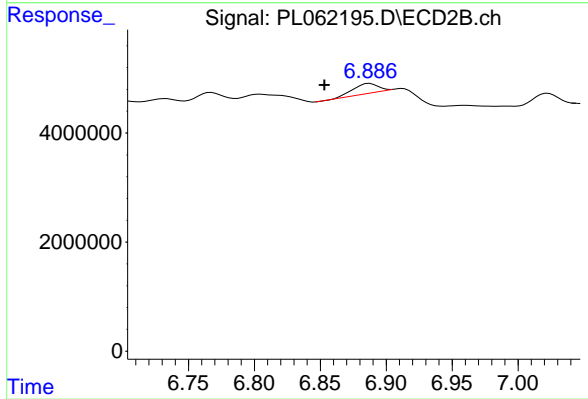
#14 Endrin

R.T.: 6.656 min  
 Delta R.T.: 0.012 min  
 Response: 506049  
 Conc: 0.21 ng/ml



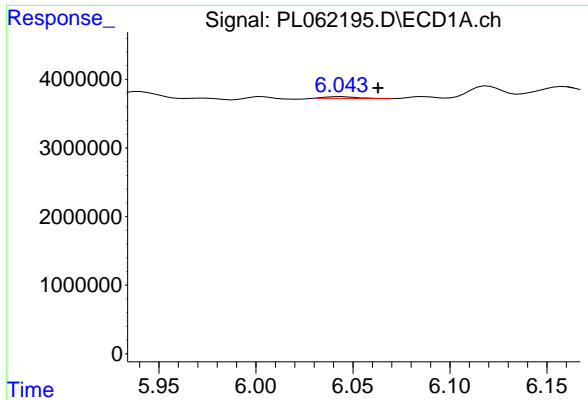
#15 Endosulfan II

R.T.: 6.237 min  
 Delta R.T.: 0.031 min  
 Response: 3383379  
 Conc: 2.15 ng/ml



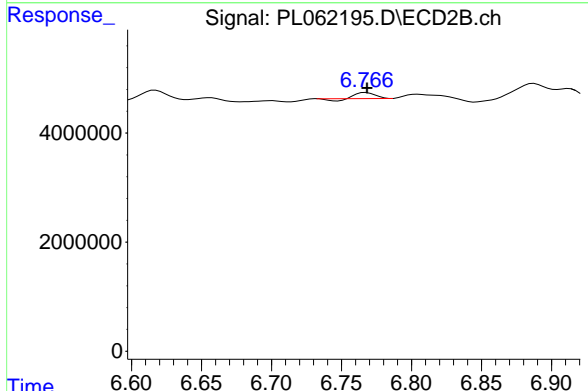
#15 Endosulfan II

R.T.: 6.887 min  
 Delta R.T.: 0.034 min  
 Response: 2315381  
 Conc: 0.88 ng/ml

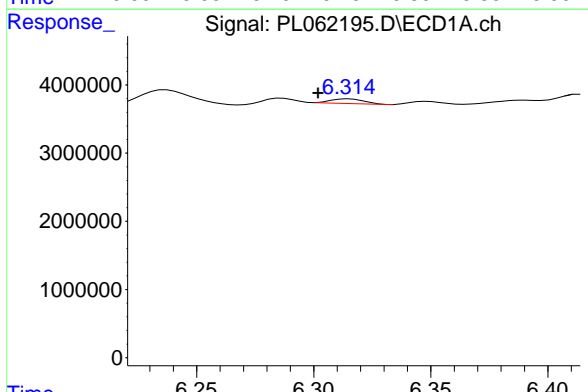


#16 4,4'-DDD  
 R.T.: 6.044 min  
 Delta R.T.: -0.019 min  
 Response: 283120  
 Conc: 0.20 ng/ml

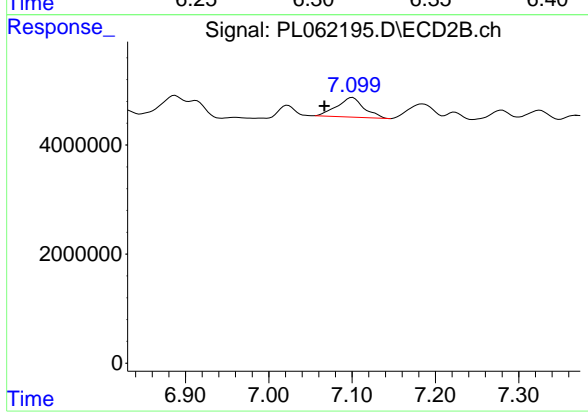
Instrument :  
 ECD\_L  
 ClientSampleId :



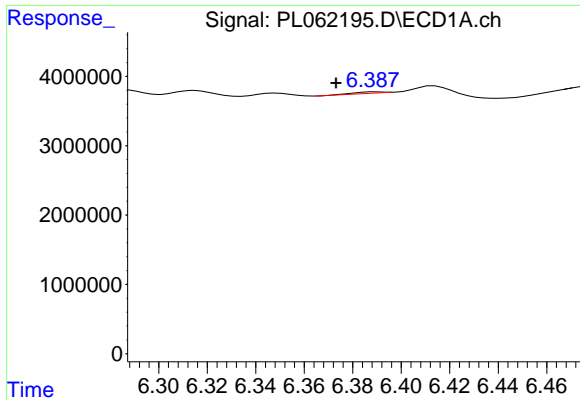
#16 4,4'-DDD  
 R.T.: 6.767 min  
 Delta R.T.: 0.000 min  
 Response: 826706  
 Conc: 0.35 ng/ml



#17 4,4'-DDT  
 R.T.: 6.315 min  
 Delta R.T.: 0.013 min  
 Response: 673914  
 Conc: 0.51 ng/ml



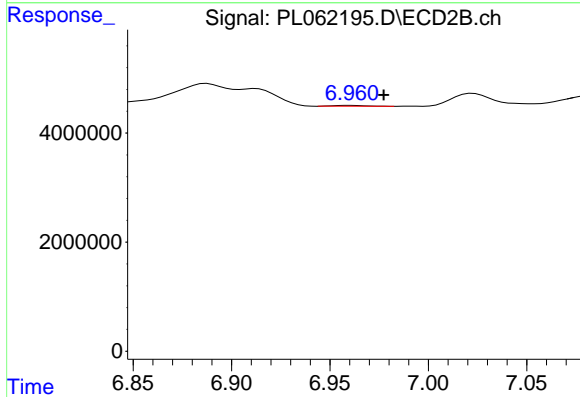
#17 4,4'-DDT  
 R.T.: 7.101 min  
 Delta R.T.: 0.034 min  
 Response: 8132953  
 Conc: 3.57 ng/ml



#18 Endrin aldehyde

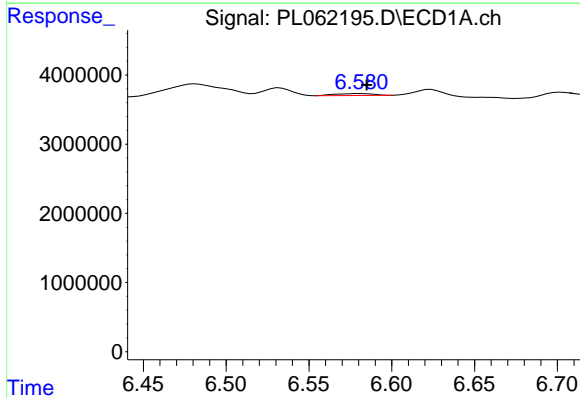
R.T.: 6.390 min  
 Delta R.T.: 0.017 min  
 Response: 155244  
 Conc: 0.11 ng/ml

Instrument :  
 ECD\_L  
 ClientSampleId :



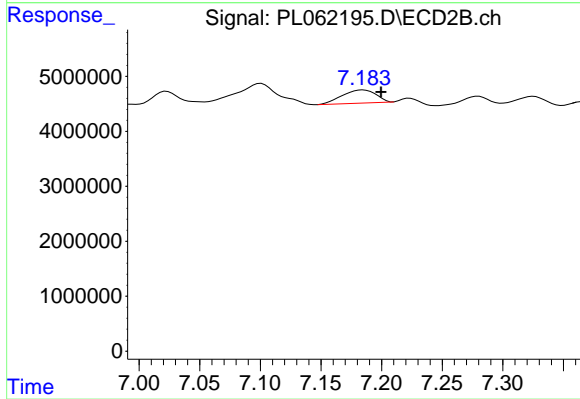
#18 Endrin aldehyde

R.T.: 6.961 min  
 Delta R.T.: -0.017 min  
 Response: 176192  
 Conc: N.D.



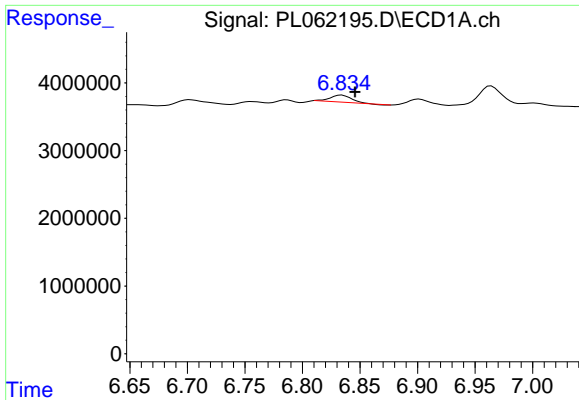
#19 Endosulfan Sulfate

R.T.: 6.581 min  
 Delta R.T.: -0.003 min  
 Response: 441302  
 Conc: 0.26 ng/ml



#19 Endosulfan Sulfate

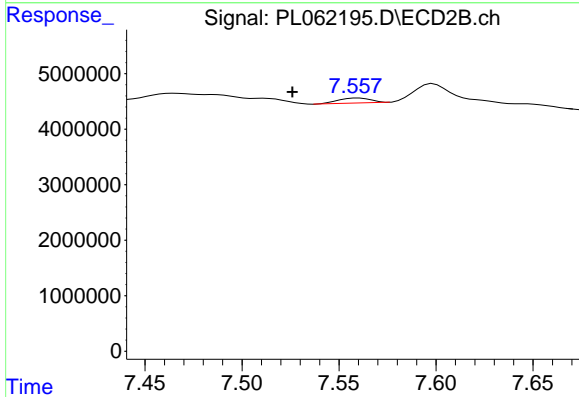
R.T.: 7.185 min  
 Delta R.T.: -0.015 min  
 Response: 4674134  
 Conc: 1.75 ng/ml



#20 Methoxychlor

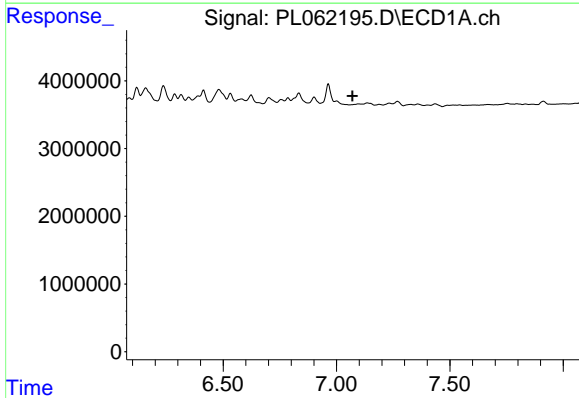
R.T.: 6.834 min  
 Delta R.T.: -0.011 min  
 Response: 1345797  
 Conc: 1.64 ng/ml

Instrument :  
 ECD\_L  
 ClientSampleId :



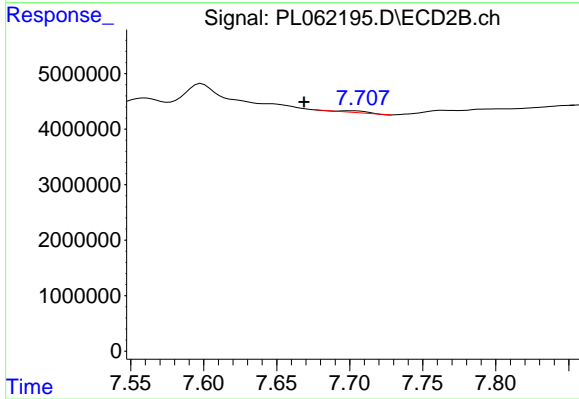
#20 Methoxychlor

R.T.: 7.560 min  
 Delta R.T.: 0.034 min  
 Response: 1049130  
 Conc: 0.79 ng/ml



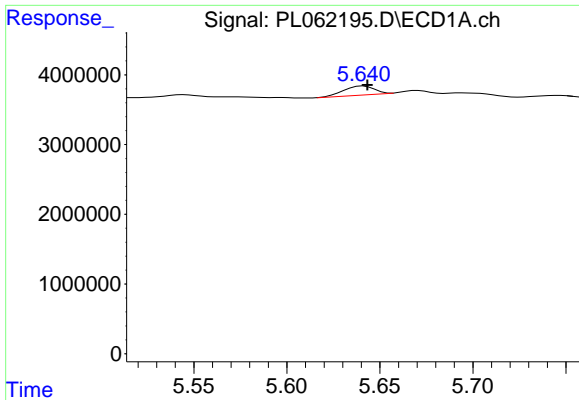
#21 Endrin ketone

R.T.: 7.095 min  
 Delta R.T.: 0.024 min  
 Response: -65329  
 Conc: N.D.



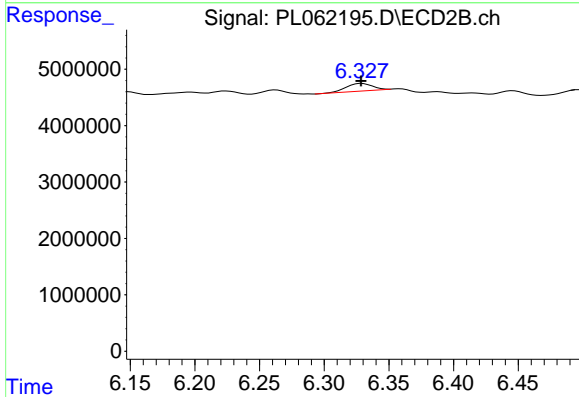
#21 Endrin ketone

R.T.: 7.702 min  
 Delta R.T.: 0.033 min  
 Response: 423161  
 Conc: 0.16 ng/ml

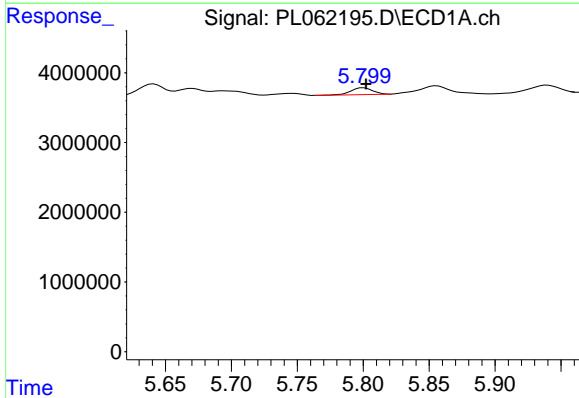


#22 Toxaphene-1  
 R.T.: 5.641 min  
 Delta R.T.: -0.002 min  
 Response: 1473222  
 Conc: 138.88 ng/ml

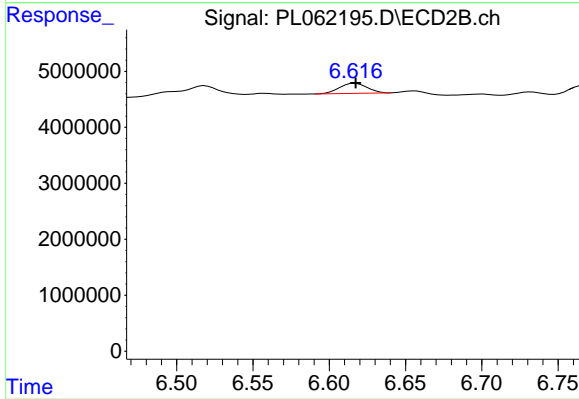
Instrument :  
 ECD\_L  
 ClientSampleId :



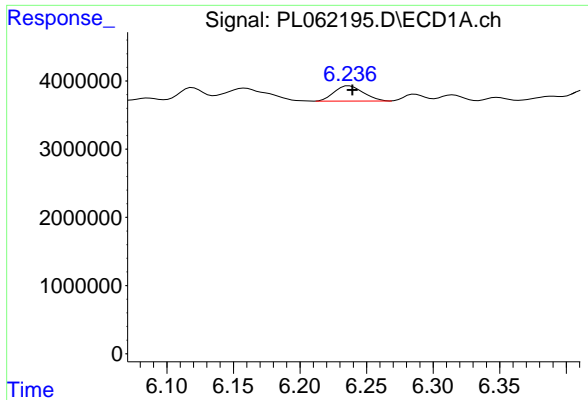
#22 Toxaphene-1  
 R.T.: 6.329 min  
 Delta R.T.: 0.000 min  
 Response: 1833117  
 Conc: 134.34 ng/ml



#23 Toxaphene-2  
 R.T.: 5.800 min  
 Delta R.T.: -0.002 min  
 Response: 1116000  
 Conc: 125.33 ng/ml



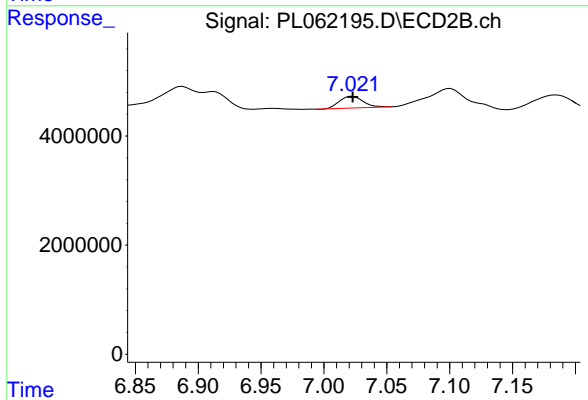
#23 Toxaphene-2  
 R.T.: 6.617 min  
 Delta R.T.: 0.000 min  
 Response: 2279330  
 Conc: 124.61 ng/ml



#24 Toxaphene-3

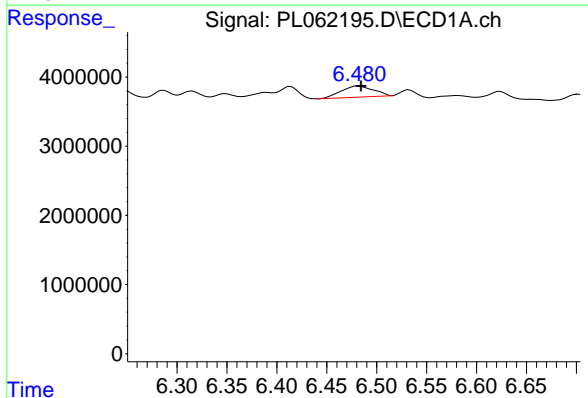
R.T.: 6.237 min  
 Delta R.T.: -0.002 min  
 Response: 3383379  
 Conc: 118.63 ng/ml

Instrument :  
 ECD\_L  
 ClientSampleId :



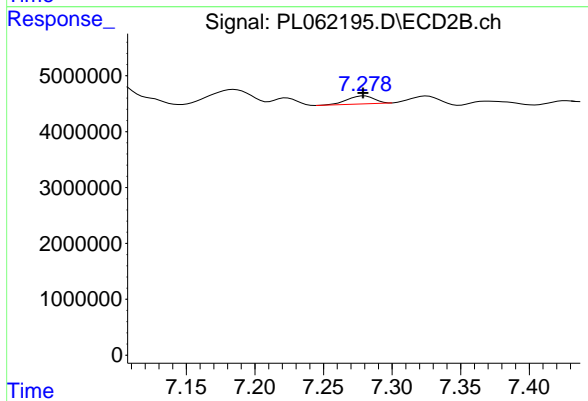
#24 Toxaphene-3

R.T.: 7.023 min  
 Delta R.T.: 0.000 min  
 Response: 2821846  
 Conc: 119.36 ng/ml



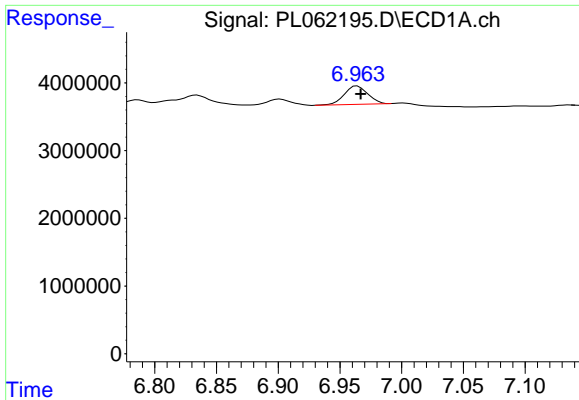
#25 Toxaphene-4

R.T.: 6.482 min  
 Delta R.T.: -0.003 min  
 Response: 3602206  
 Conc: 120.20 ng/ml



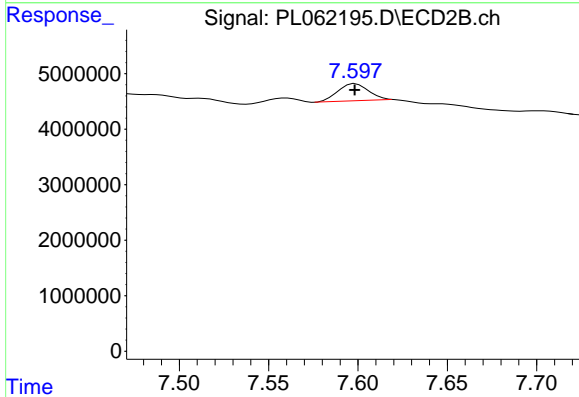
#25 Toxaphene-4

R.T.: 7.280 min  
 Delta R.T.: 0.000 min  
 Response: 1942519  
 Conc: 106.23 ng/ml

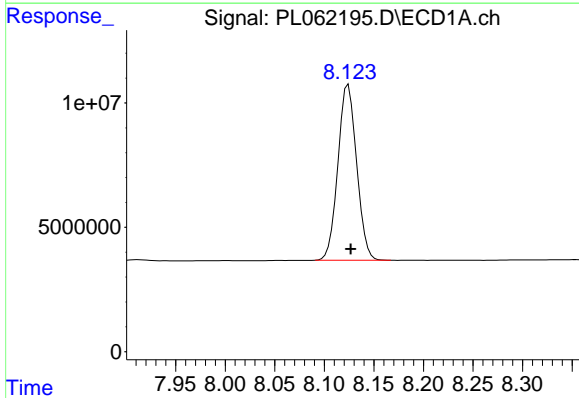


#26 Toxaphene-5  
 R.T.: 6.964 min  
 Delta R.T.: -0.003 min  
 Response: 3606532  
 Conc: 116.29 ng/ml

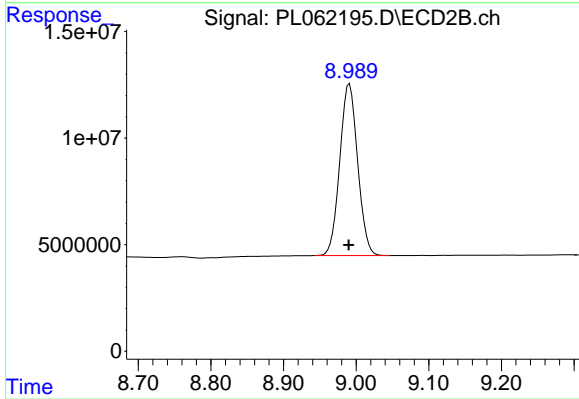
Instrument :  
 ECD\_L  
 ClientSampleId :



#26 Toxaphene-5  
 R.T.: 7.599 min  
 Delta R.T.: 0.000 min  
 Response: 3756761  
 Conc: 118.30 ng/ml



#27 Decachlorobiphenyl  
 R.T.: 8.124 min  
 Delta R.T.: -0.002 min  
 Response: 92913894  
 Conc: 48.88 ng/ml



#27 Decachlorobiphenyl  
 R.T.: 8.991 min  
 Delta R.T.: 0.000 min  
 Response: 137978097  
 Conc: 49.65 ng/ml