

Data Path : Z:\pestpcbsrv\HPCHEM1\ECD_L\Data\PL101123\
 Data File : PL085837.D
 Signal(s) : Signal #1: ECD1A.ch Signal #2: ECD2B.ch
 Acq On : 11 Oct 2023 08:38
 Operator : AR\AJ
 Sample : PEM
 Misc :
 ALS Vial : 3 Sample Multiplier: 1

Instrument :
 ECD_L
 ClientSampleId :

Integration File signal 1: autoint1.e
 Integration File signal 2: autoint2.e
 Quant Time: Oct 11 21:43:34 2023
 Quant Method : Z:\pestpcbsrv\HPCHEM1\ECD_L\methods\PL100323.M
 Quant Title : GC Extractables
 QLast Update : Wed Oct 04 05:29:39 2023
 Response via : Initial Calibration
 Integrator: ChemStation

Volume Inj. : 1 µl
 Signal #1 Phase : ZB-MR2 Signal #2 Phase: ZB-MR1
 Signal #1 Info : 30M x 0.32mm x0.2 Signal #2 Info : 30M x 0.32mm x0.5µm

Compound	RT#1	RT#2	Resp#1	Resp#2	ng/ml	ng/ml
System Monitoring Compounds						
1) SA Tetrachlo...	3.357	2.623	64082180	18440182	21.546	19.741
28) SA Decachlor...	8.859	7.775	54670742	23224837	25.101	25.163
Target Compounds						
2) A alpha-BHC	3.811	3.121	44519647	11634986	10.373	9.248
3) MA gamma-BHC...	4.143	3.448	42738541	11587197	10.340	9.395
4) MA Heptachlor	4.726	3.798	235230	61569	0.061	0.053
5) MB Aldrin	0.000	4.080f	0	87913	N.D.	0.079 #
6) B beta-BHC	4.346	3.750	20584623	6391114	12.448	12.277
8) B Heptachlo...	0.000	4.558	0	5706	N.D.	0.006 #
9) A Endosulfan I	5.871	4.947	7564909	338980	2.339	0.316 #
10) B gamma-Chl...	5.766	0.000	1460459	0	0.427	N.D. #
11) B alpha-Chl...	5.822f	0.000	2968830	0	0.869	N.D. #
12) B 4,4'-DDE	6.017	5.087	2658864	81151	0.951	0.099 #
14) MA Endrin	6.390	5.473	144.3E6	50841743	50.636	56.553
15) B Endosulfa...	6.611	5.755f	2662416	355627	0.966	0.374 #
16) A 4,4'-DDD	6.541	5.639	1059373	334559	0.526	0.481
17) MA 4,4'-DDT	6.855	5.887	280.5E6	106.3E6	119.022	134.463
18) B Endrin al...	6.744	5.953	3610728	2789530	1.782	3.741 #
19) B Endosulfa...	0.000	6.181	0	43881	N.D.	0.049 #
20) A Methoxychlor	7.340	6.472	379.8E6	146.0E6	271.972	277.553
21) B Endrin ke...	7.461	6.678	6259780	2806589	2.173	2.442
22) Mirex	0.000	6.840f	0	101505	N.D.	0.108 #
24) Chlordane-2	5.015f	4.177	1222754	116784	9.403	3.001 #
25) Chlordane-3	5.766	0.000	1460459	0	2.863	N.D. #
26) Chlordane-4	5.822f	0.000	2968830	0	4.679	N.D. #

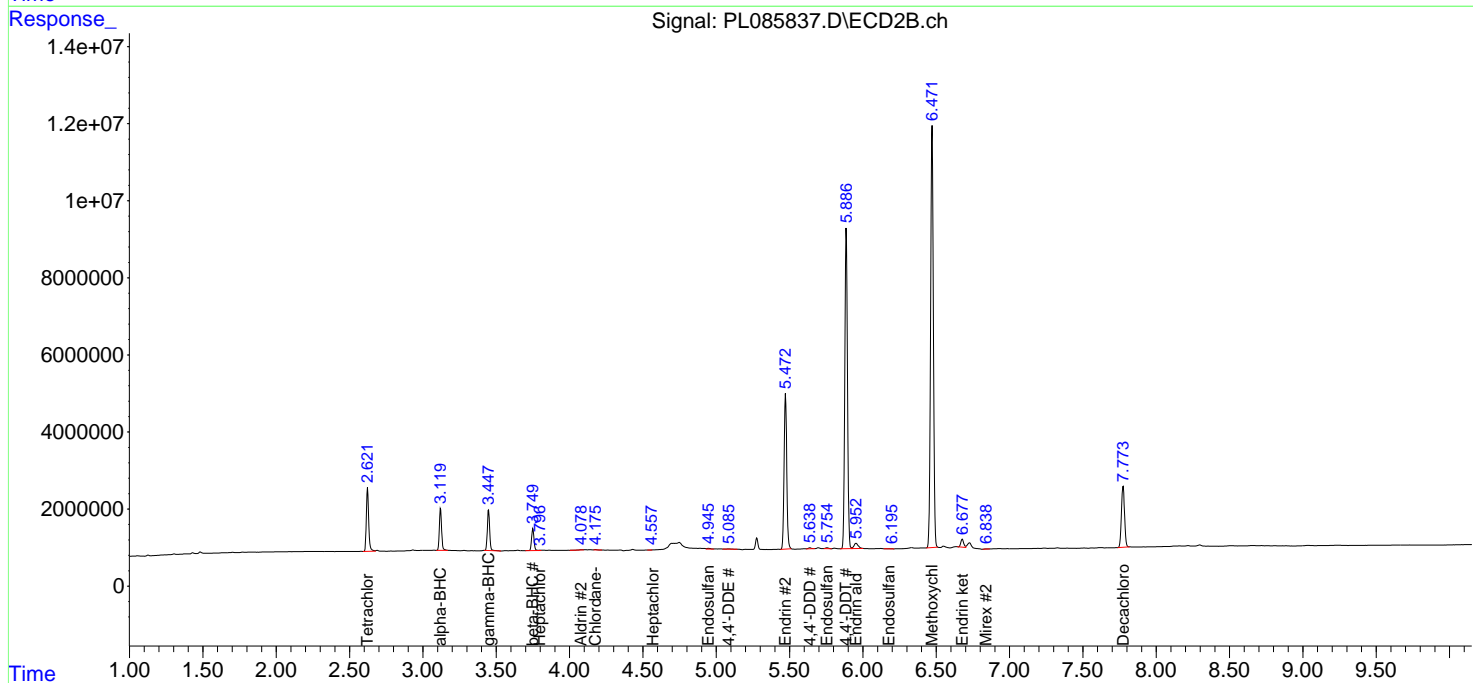
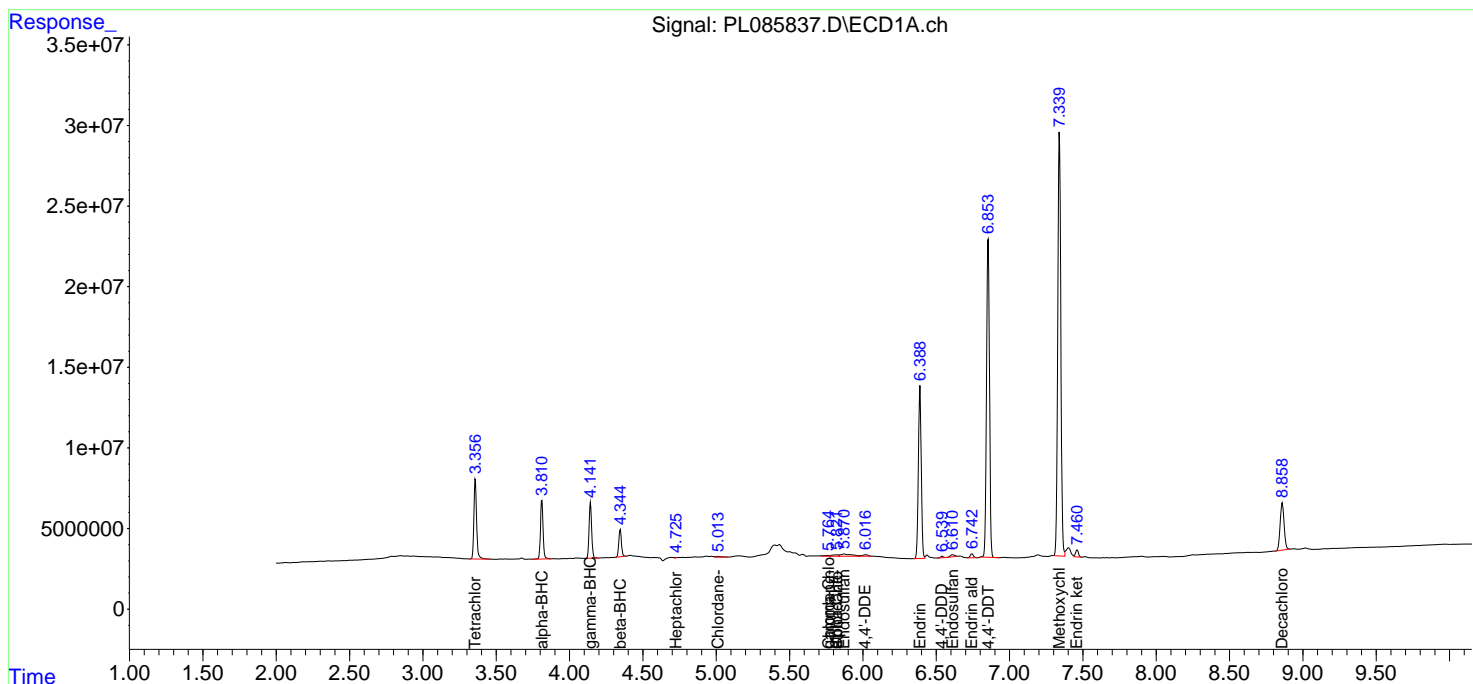
(f)=RT Delta > 1/2 Window (#)=Amounts differ by > 25% (m)=manual int.

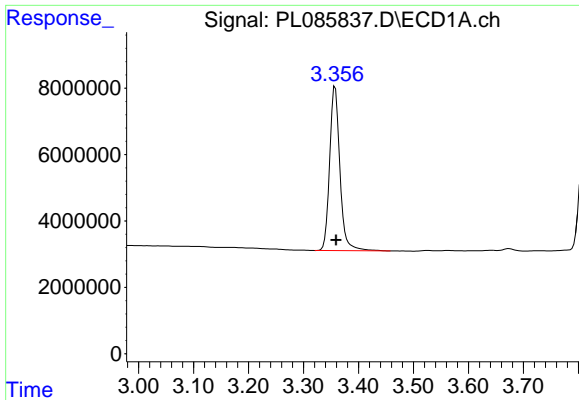
Data Path : Z:\pestpcbsrv\HPCHEM1\ECD_L\Data\PL101123\
 Data File : PL085837.D
 Signal(s) : Signal #1: ECD1A.ch Signal #2: ECD2B.ch
 Acq On : 11 Oct 2023 08:38
 Operator : AR\AJ
 Sample : PEM
 Misc :
 ALS Vial : 3 Sample Multiplier: 1

Instrument :
 ECD_L
 ClientSampleId :

Integration File signal 1: autoint1.e
 Integration File signal 2: autoint2.e
 Quant Time: Oct 11 21:43:34 2023
 Quant Method : Z:\pestpcbsrv\HPCHEM1\ECD_L\methods\PL100323.M
 Quant Title : GC Extractables
 QLast Update : Wed Oct 04 05:29:39 2023
 Response via : Initial Calibration
 Integrator: ChemStation

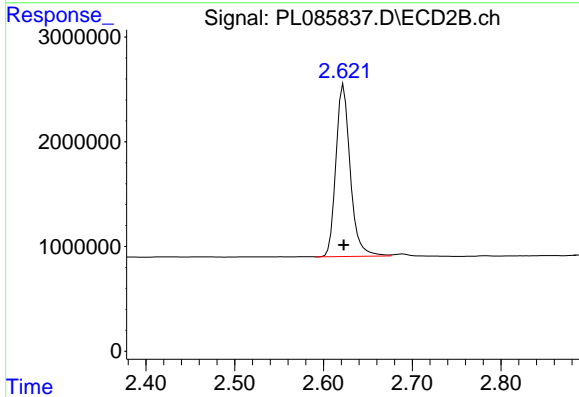
Volume Inj. : 1 µl
 Signal #1 Phase : ZB-MR2 Signal #2 Phase: ZB-MR1
 Signal #1 Info : 30M x 0.32mm x0.2 Signal #2 Info : 30M x 0.32mm x0.5µm



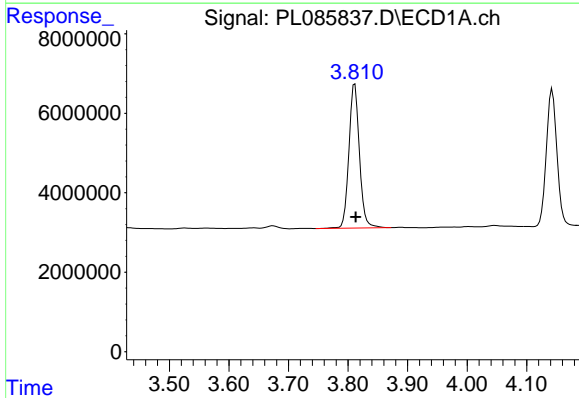


#1 Tetrachloro-m-xylene
 R.T.: 3.357 min
 Delta R.T.: -0.002 min
 Response: 64082180
 Conc: 21.55 ng/ml

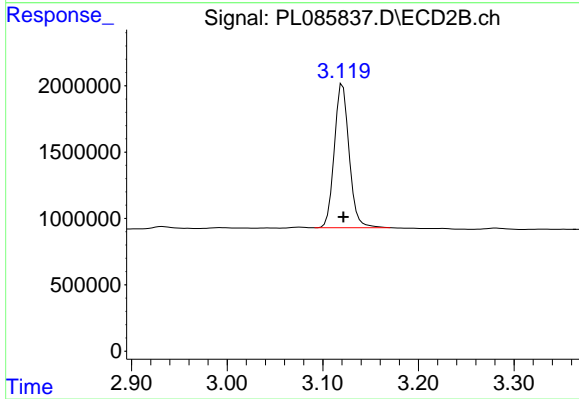
Instrument :
 ECD_L
 ClientSampleId :



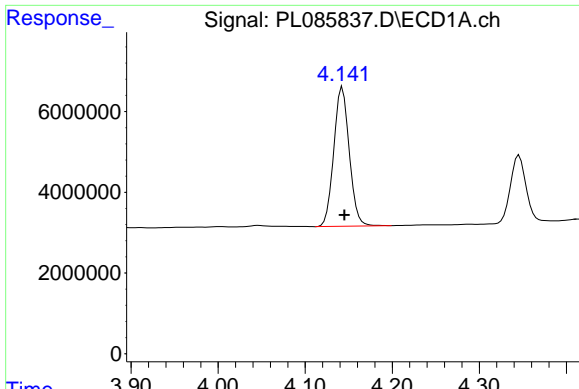
#1 Tetrachloro-m-xylene
 R.T.: 2.623 min
 Delta R.T.: 0.000 min
 Response: 18440182
 Conc: 19.74 ng/ml



#2 alpha-BHC
 R.T.: 3.811 min
 Delta R.T.: -0.001 min
 Response: 44519647
 Conc: 10.37 ng/ml

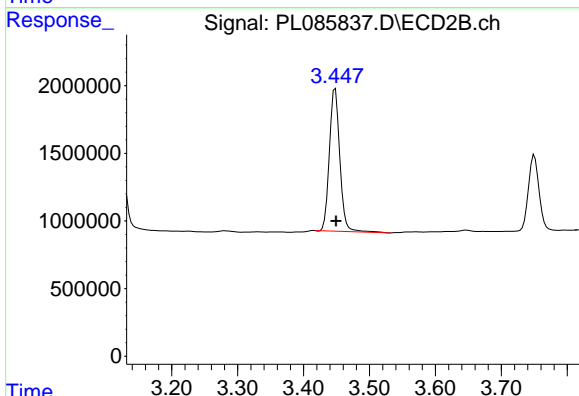


#2 alpha-BHC
 R.T.: 3.121 min
 Delta R.T.: 0.000 min
 Response: 11634986
 Conc: 9.25 ng/ml

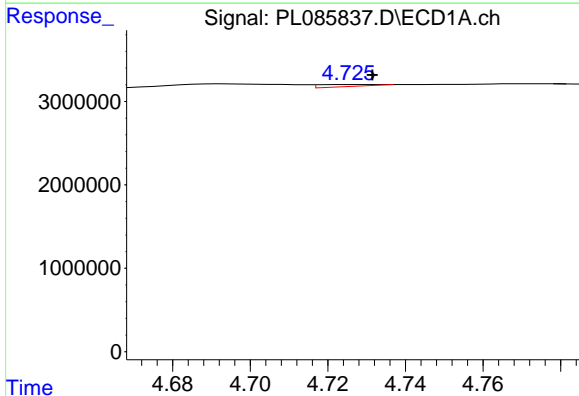


#3 gamma-BHC (Lindane)
 R.T.: 4.143 min
 Delta R.T.: -0.002 min
 Response: 42738541
 Conc: 10.34 ng/ml

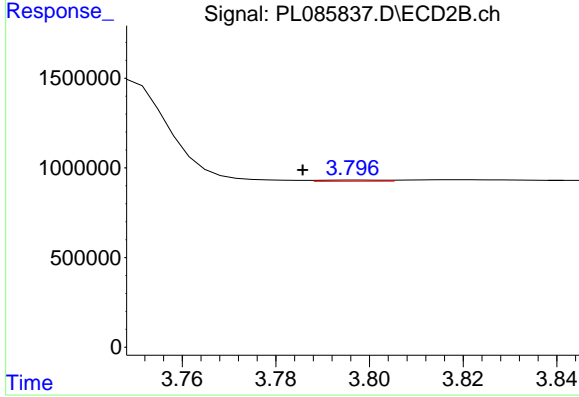
Instrument :
 ECD_L
 ClientSampleId :



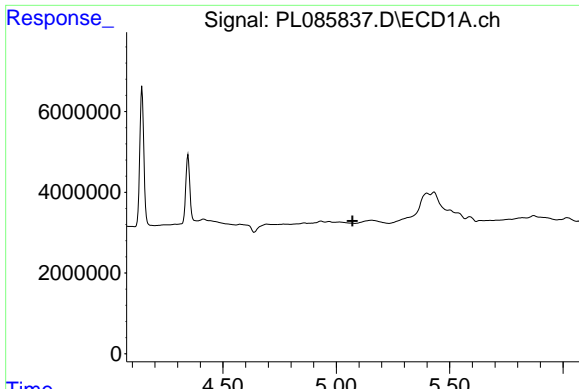
#3 gamma-BHC (Lindane)
 R.T.: 3.448 min
 Delta R.T.: -0.001 min
 Response: 11587197
 Conc: 9.39 ng/ml



#4 Heptachlor
 R.T.: 4.726 min
 Delta R.T.: -0.006 min
 Response: 235230
 Conc: 0.06 ng/ml

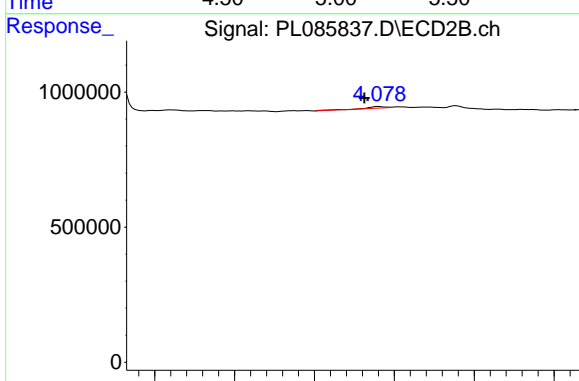


#4 Heptachlor
 R.T.: 3.798 min
 Delta R.T.: 0.012 min
 Response: 61569
 Conc: 0.05 ng/ml

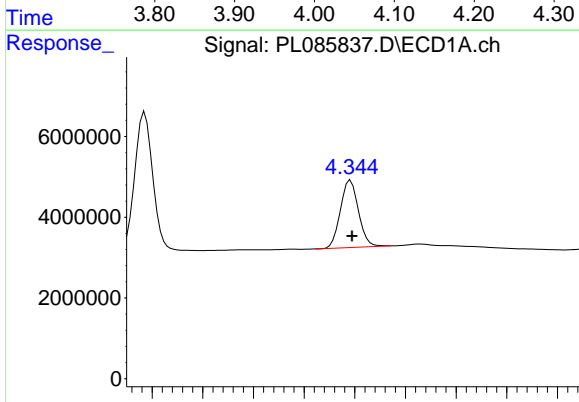


#5 Aldrin
 R.T.: 0.000 min
 Exp R.T.: 5.072 min
 Response: 0
 Conc: N.D.

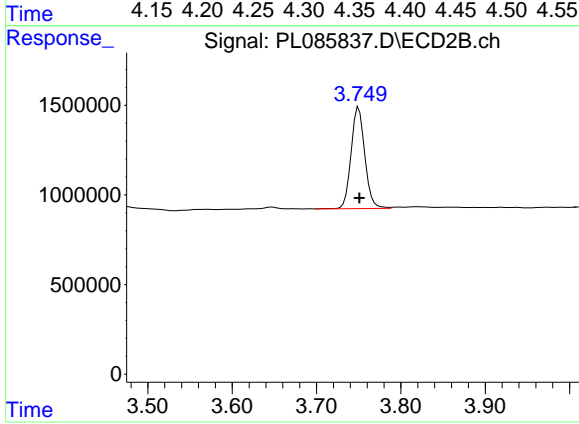
Instrument :
 ECD_L
 ClientSampleId :



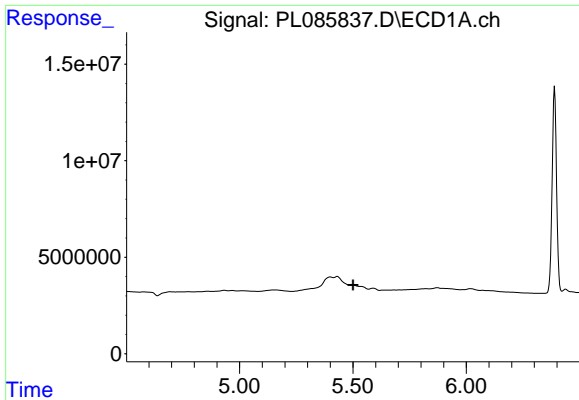
#5 Aldrin
 R.T.: 4.080 min
 Delta R.T.: 0.018 min
 Response: 87913
 Conc: 0.08 ng/ml



#6 beta-BHC
 R.T.: 4.346 min
 Delta R.T.: -0.001 min
 Response: 20584623
 Conc: 12.45 ng/ml



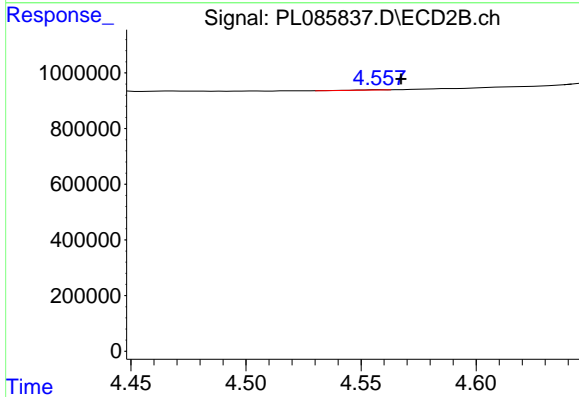
#6 beta-BHC
 R.T.: 3.750 min
 Delta R.T.: 0.000 min
 Response: 6391114
 Conc: 12.28 ng/ml



#8 Heptachlor epoxide

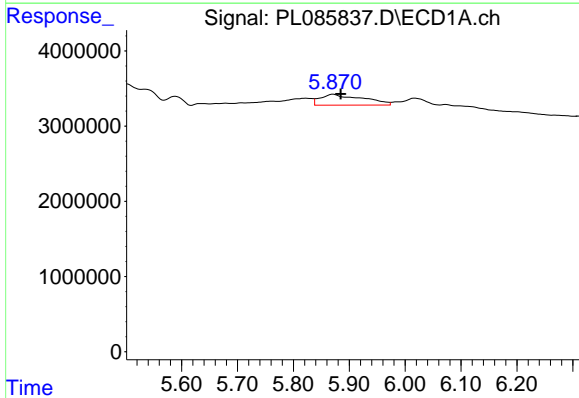
R.T.: 0.000 min
 Exp R.T.: 5.501 min
 Response: 0
 Conc: N.D.

Instrument :
 ECD_L
 ClientSampleId :



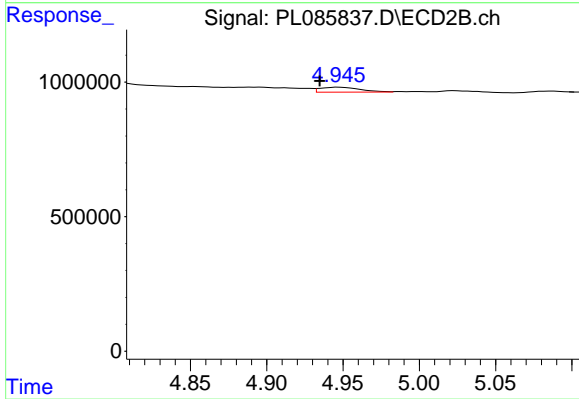
#8 Heptachlor epoxide

R.T.: 4.558 min
 Delta R.T.: -0.009 min
 Response: 5706
 Conc: 0.01 ng/ml



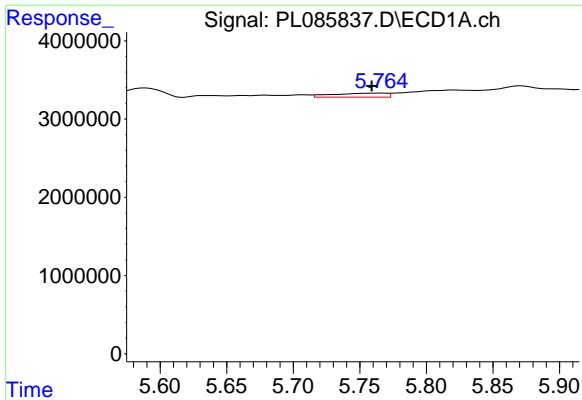
#9 Endosulfan I

R.T.: 5.871 min
 Delta R.T.: -0.014 min
 Response: 7564909
 Conc: 2.34 ng/ml



#9 Endosulfan I

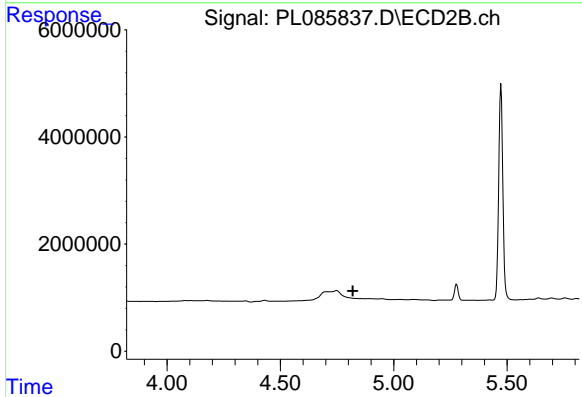
R.T.: 4.947 min
 Delta R.T.: 0.013 min
 Response: 338980
 Conc: 0.32 ng/ml



#10 gamma-Chlordane

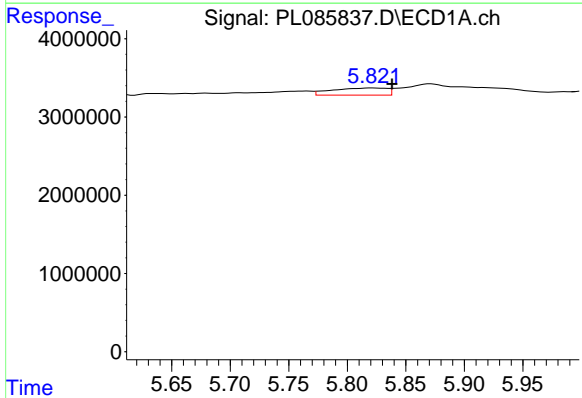
R.T.: 5.766 min
 Delta R.T.: 0.007 min
 Response: 1460459
 Conc: 0.43 ng/ml

Instrument :
 ECD_L
 ClientSampleId :



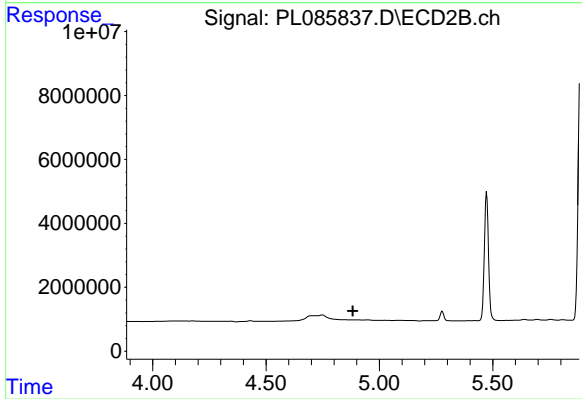
#10 gamma-Chlordane

R.T.: 0.000 min
 Exp R.T. : 4.819 min
 Response: 0
 Conc: N.D.



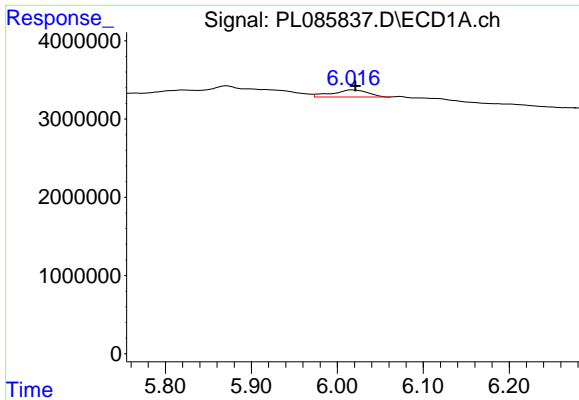
#11 alpha-Chlordane

R.T.: 5.822 min
 Delta R.T.: -0.016 min
 Response: 2968830
 Conc: 0.87 ng/ml



#11 alpha-Chlordane

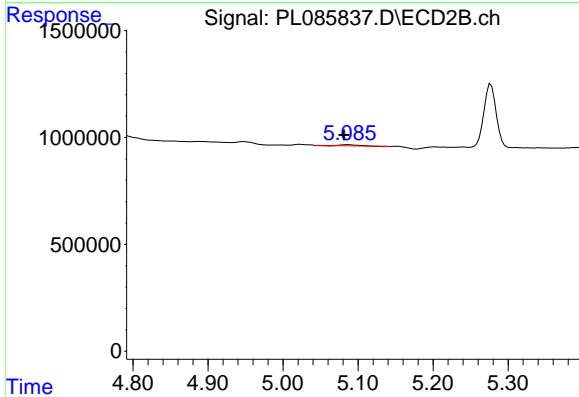
R.T.: 0.000 min
 Exp R.T. : 4.883 min
 Response: 0
 Conc: N.D.



#12 4,4'-DDE

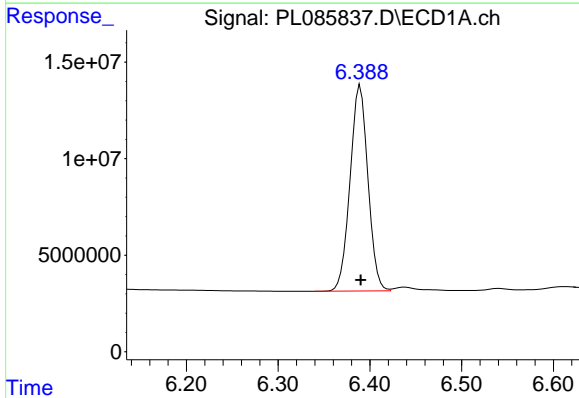
R.T.: 6.017 min
 Delta R.T.: -0.004 min
 Response: 2658864
 Conc: 0.95 ng/ml

Instrument :
 ECD_L
 ClientSampleId :



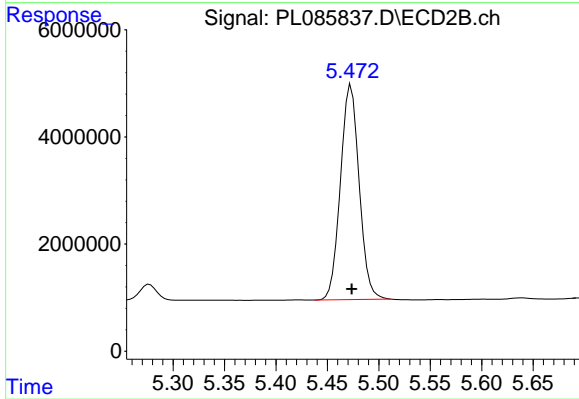
#12 4,4'-DDE

R.T.: 5.087 min
 Delta R.T.: 0.005 min
 Response: 81151
 Conc: 0.10 ng/ml



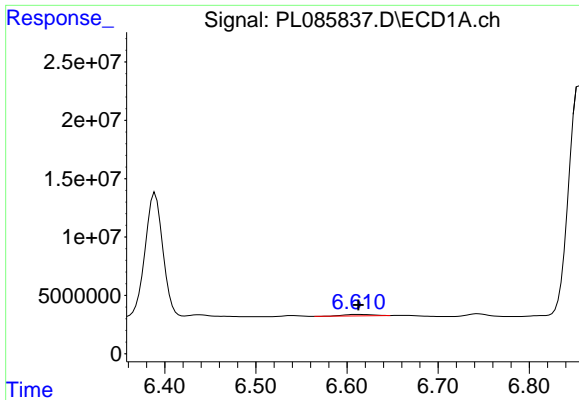
#14 Endrin

R.T.: 6.390 min
 Delta R.T.: 0.000 min
 Response: 144301088
 Conc: 50.64 ng/ml



#14 Endrin

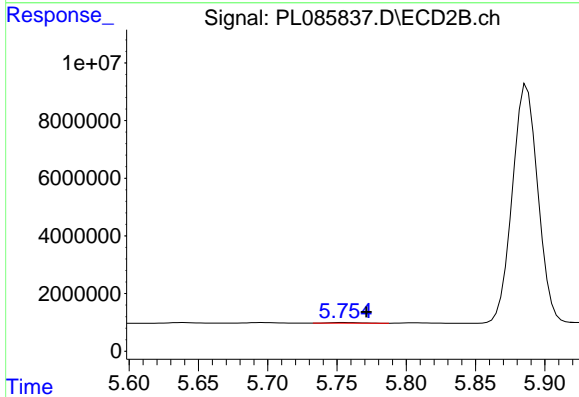
R.T.: 5.473 min
 Delta R.T.: 0.000 min
 Response: 50841743
 Conc: 56.55 ng/ml



#15 Endosulfan II

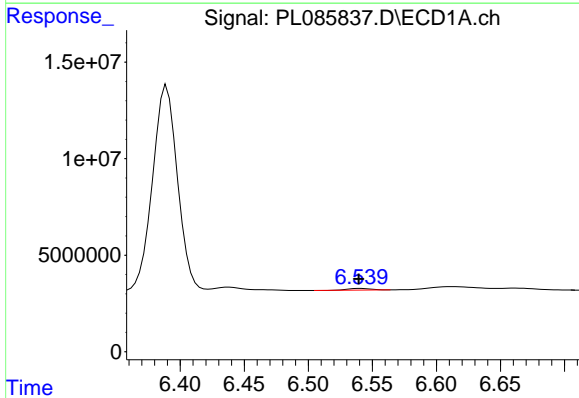
R.T.: 6.611 min
 Delta R.T.: -0.001 min
 Response: 2662416
 Conc: 0.97 ng/ml

Instrument :
 ECD_L
 ClientSampleId :



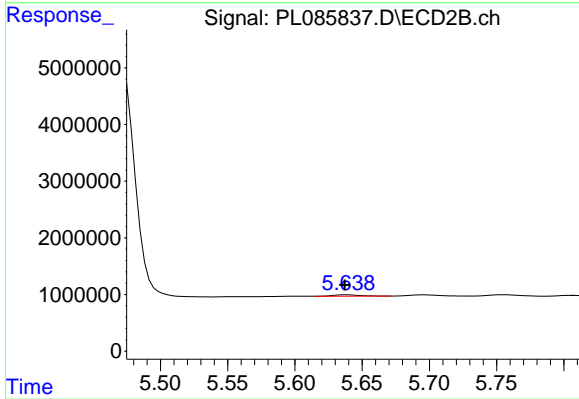
#15 Endosulfan II

R.T.: 5.755 min
 Delta R.T.: -0.016 min
 Response: 355627
 Conc: 0.37 ng/ml



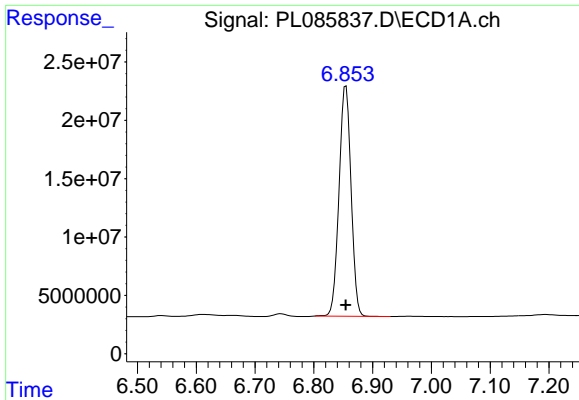
#16 4,4'-DDD

R.T.: 6.541 min
 Delta R.T.: 0.001 min
 Response: 1059373
 Conc: 0.53 ng/ml



#16 4,4'-DDD

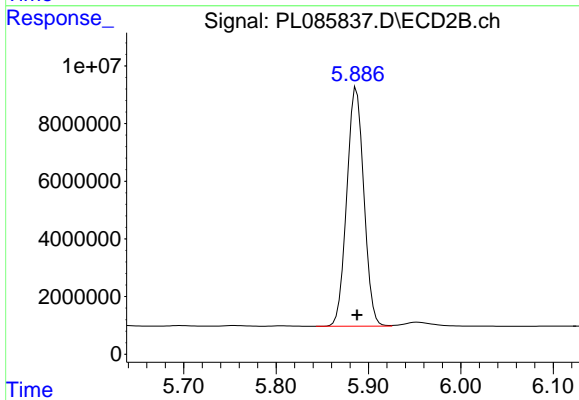
R.T.: 5.639 min
 Delta R.T.: 0.002 min
 Response: 334559
 Conc: 0.48 ng/ml



#17 4,4'-DDT

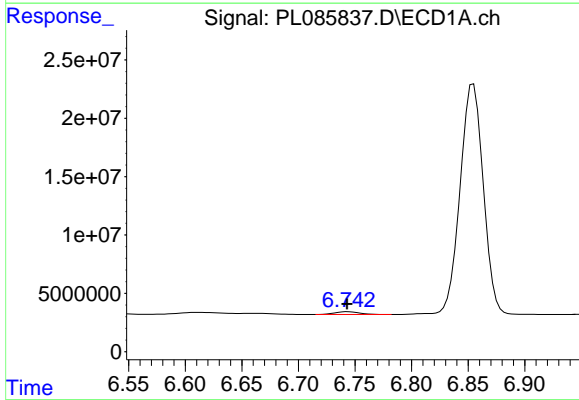
R.T.: 6.855 min
 Delta R.T.: 0.000 min
 Response: 280546500
 Conc: 119.02 ng/ml

Instrument :
 ECD_L
 ClientSampleId :



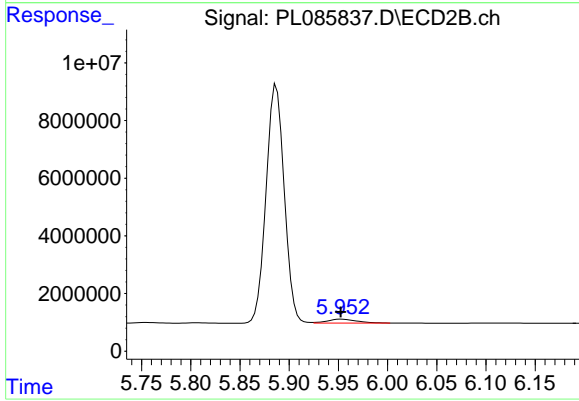
#17 4,4'-DDT

R.T.: 5.887 min
 Delta R.T.: 0.000 min
 Response: 106327199
 Conc: 134.46 ng/ml



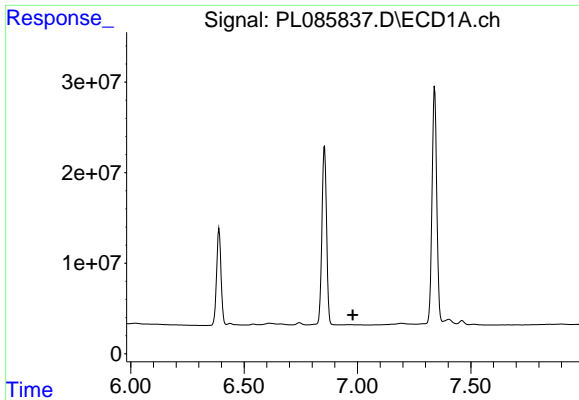
#18 Endrin aldehyde

R.T.: 6.744 min
 Delta R.T.: 0.000 min
 Response: 3610728
 Conc: 1.78 ng/ml



#18 Endrin aldehyde

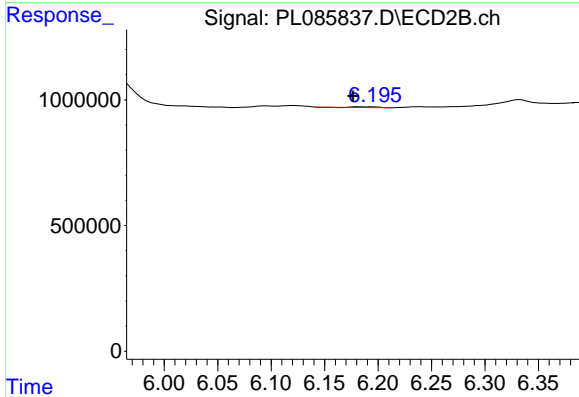
R.T.: 5.953 min
 Delta R.T.: 0.000 min
 Response: 2789530
 Conc: 3.74 ng/ml



#19 Endosulfan Sulfate

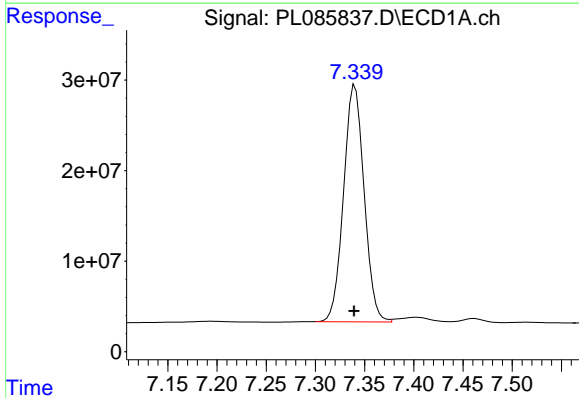
R.T.: 0.000 min
 Exp R.T.: 6.979 min
 Response: 0
 Conc: N.D.

Instrument :
 ECD_L
 ClientSampleId :



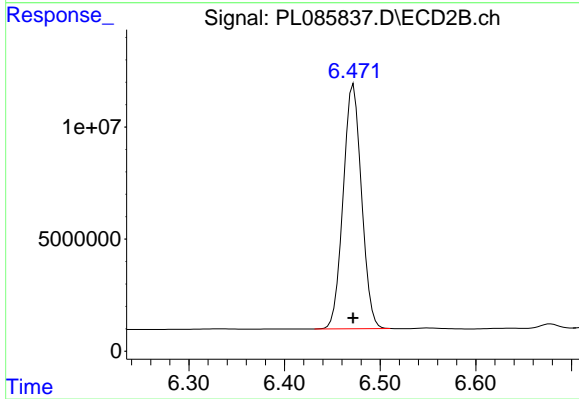
#19 Endosulfan Sulfate

R.T.: 6.181 min
 Delta R.T.: 0.004 min
 Response: 43881
 Conc: 0.05 ng/ml



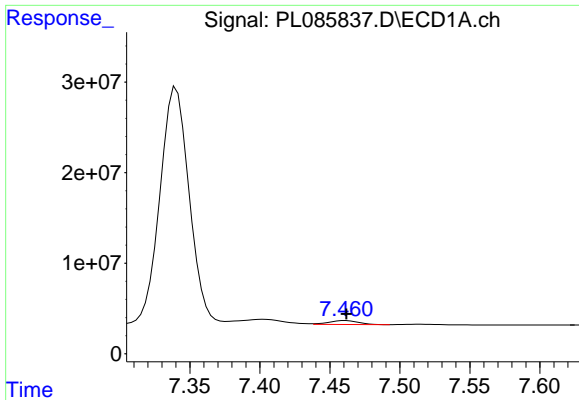
#20 Methoxychlor

R.T.: 7.340 min
 Delta R.T.: 0.001 min
 Response: 379841945
 Conc: 271.97 ng/ml



#20 Methoxychlor

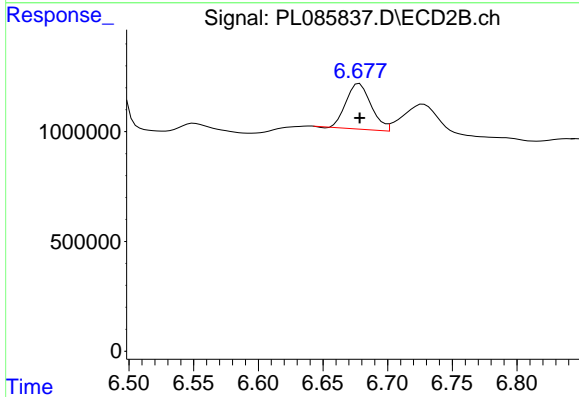
R.T.: 6.472 min
 Delta R.T.: 0.000 min
 Response: 146014104
 Conc: 277.55 ng/ml



#21 Endrin ketone

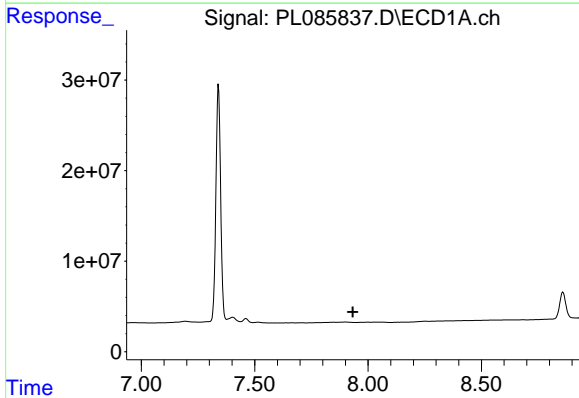
R.T.: 7.461 min
 Delta R.T.: 0.000 min
 Response: 6259780
 Conc: 2.17 ng/ml

Instrument :
 ECD_L
 ClientSampleId :



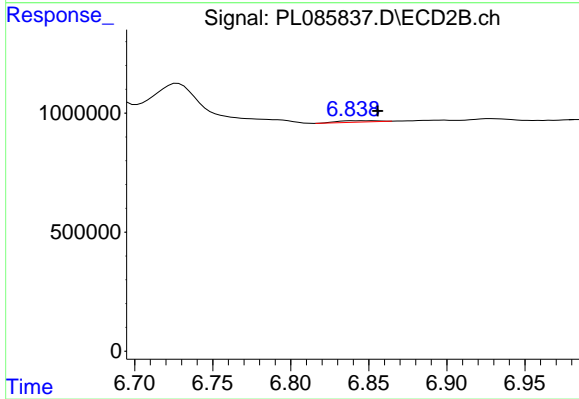
#21 Endrin ketone

R.T.: 6.678 min
 Delta R.T.: 0.000 min
 Response: 2806589
 Conc: 2.44 ng/ml



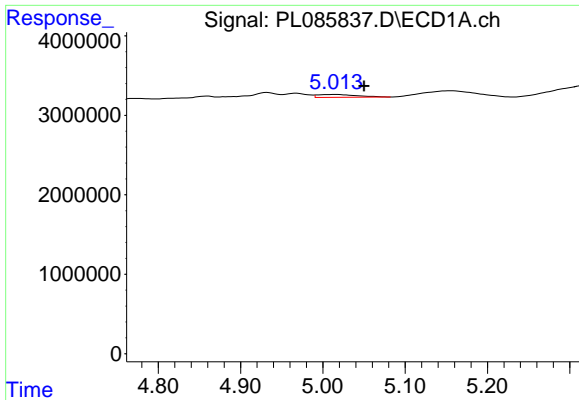
#22 Mirex

R.T.: 0.000 min
 Exp R.T. : 7.933 min
 Response: 0
 Conc: N.D.



#22 Mirex

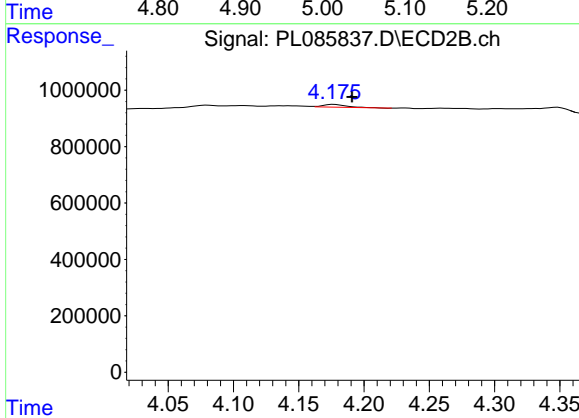
R.T.: 6.840 min
 Delta R.T.: -0.016 min
 Response: 101505
 Conc: 0.11 ng/ml



#24 Chlordane-2

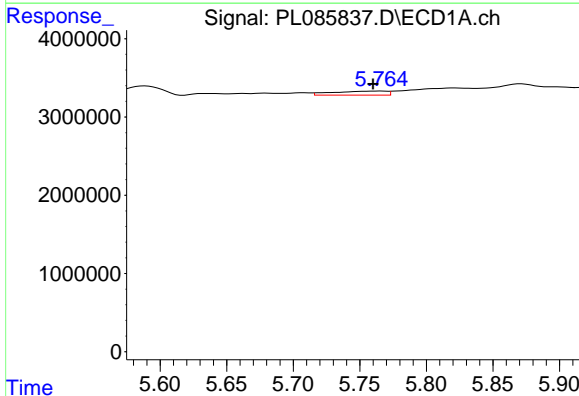
R.T.: 5.015 min
 Delta R.T.: -0.035 min
 Response: 1222754
 Conc: 9.40 ng/ml

Instrument :
 ECD_L
 ClientSampleId :



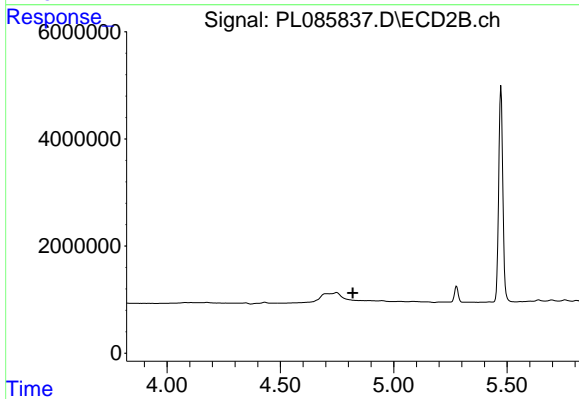
#24 Chlordane-2

R.T.: 4.177 min
 Delta R.T.: -0.014 min
 Response: 116784
 Conc: 3.00 ng/ml



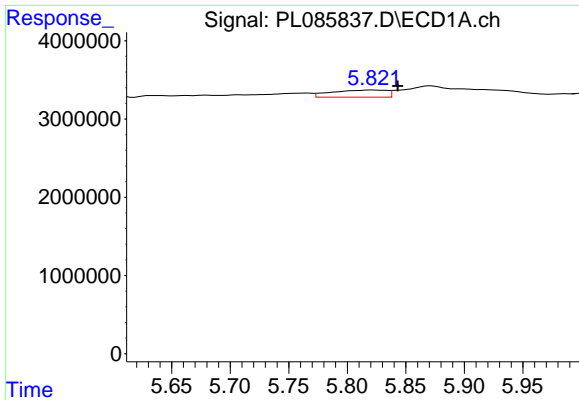
#25 Chlordane-3

R.T.: 5.766 min
 Delta R.T.: 0.006 min
 Response: 1460459
 Conc: 2.86 ng/ml



#25 Chlordane-3

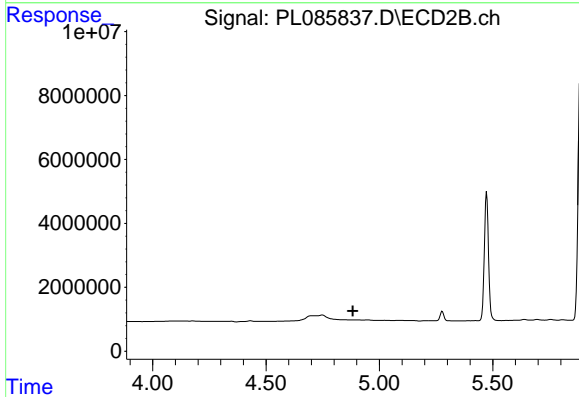
R.T.: 0.000 min
 Exp R.T. : 4.820 min
 Response: 0
 Conc: N.D.



#26 Chlordane-4

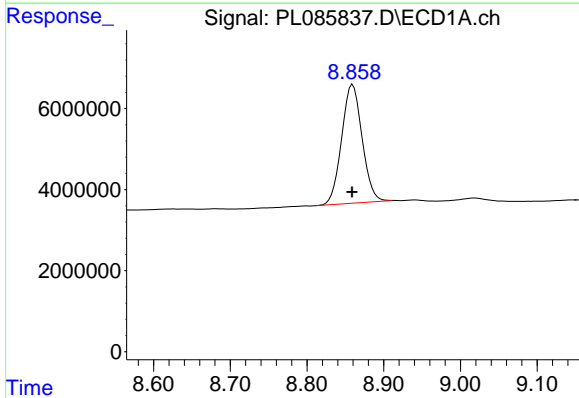
R.T.: 5.822 min
 Delta R.T.: -0.021 min
 Response: 2968830
 Conc: 4.68 ng/ml

Instrument :
 ECD_L
 ClientSampleId :



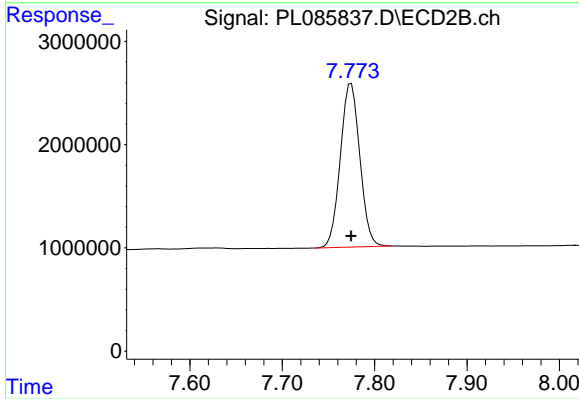
#26 Chlordane-4

R.T.: 0.000 min
 Exp R.T. : 4.883 min
 Response: 0
 Conc: N.D.



#28 Decachlorobiphenyl

R.T.: 8.859 min
 Delta R.T.: 0.000 min
 Response: 54670742
 Conc: 25.10 ng/ml



#28 Decachlorobiphenyl

R.T.: 7.775 min
 Delta R.T.: 0.000 min
 Response: 23224837
 Conc: 25.16 ng/ml