

Data Path : Z:\pestpcbsrv\HPCHEM1\ECD_L\Data\PL101220\
 Data File : PL062211.D
 Signal(s) : Signal #1: ECD1A.ch Signal #2: ECD2B.ch
 Acq On : 12 Oct 2020 11:09
 Operator : DD\AJ
 Sample : L1955-14
 Misc :
 ALS Vial : 12 Sample Multiplier: 1

Instrument :
 ECD_L
 ClientSampleId :

Integration File signal 1: autoint1.e
 Integration File signal 2: autoint2.e
 Quant Time: Oct 12 12:16:25 2020
 Quant Method : Z:\pestpcbsrv\HPCHEM1\ECD_L\methods\PL100920CLP.M
 Quant Title : GC Extractables
 QLast Update : Sat Oct 10 05:27:24 2020
 Response via : Initial Calibration
 Integrator: ChemStation

Volume Inj. : 1 µl
 Signal #1 Phase : ZB-MR2 Signal #2 Phase: ZB-MR1
 Signal #1 Info : 30M x 0.32mm x0.2 Signal #2 Info : 30M x 0.32mm x 0.50µm

Compound	RT#1	RT#2	Resp#1	Resp#2	ng/ml	ng/ml

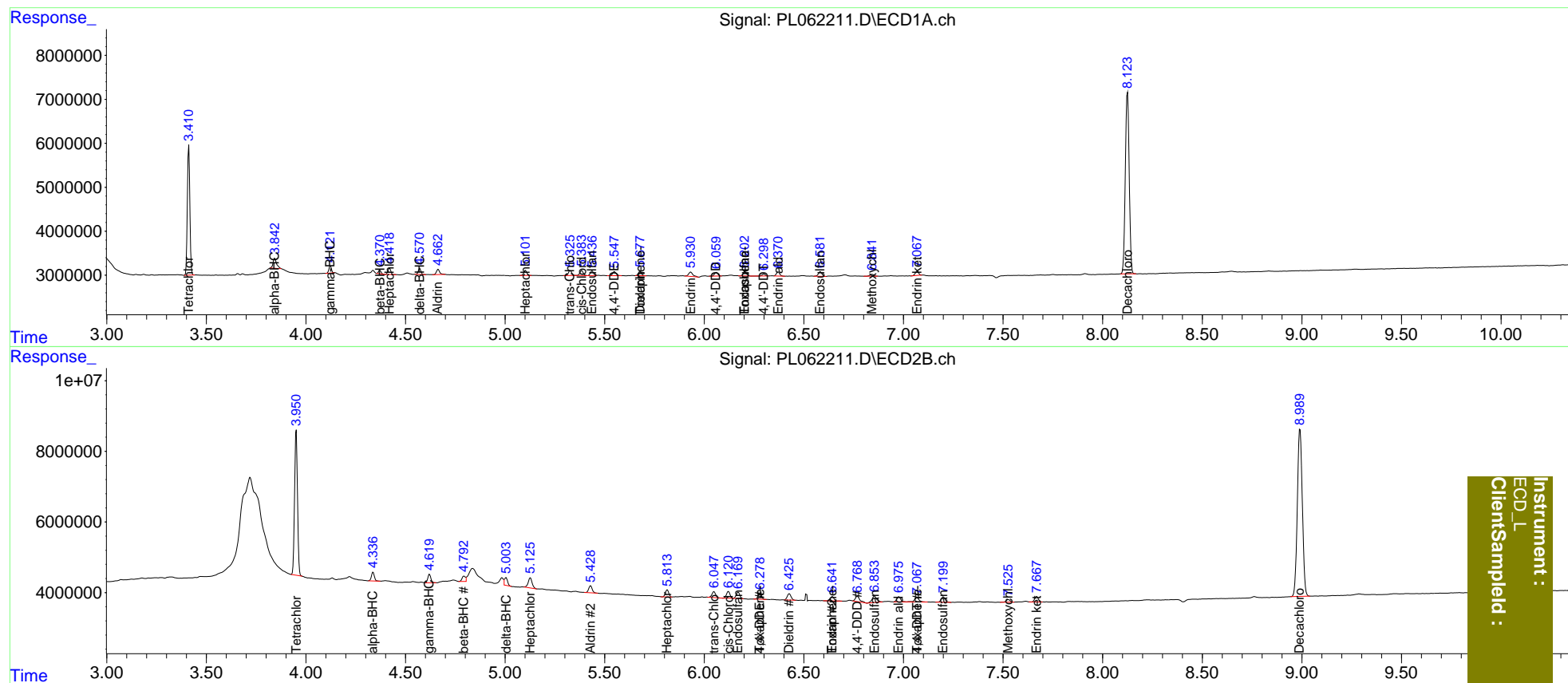
System Monitoring Compounds						
1) SA Tetrachlo...	3.412	3.951	25686971	41367273	14.406	14.515
27) SA Decachlor...	8.125	8.991	56135215	82957036	29.530	29.850
Target Compounds						
2) A alpha-BHC	3.843	4.337	2791064	2548822	1.143	0.637 #
3) MA gamma-BHC...	4.122	4.620	1420682	2547398	0.628	0.683
4) MA Heptachlor	4.420	5.127	1409763	3872690	0.700	1.037 #
5) MB Aldrin	4.664	5.429	1370278	2396556	0.749	0.710
6) B beta-BHC	4.371	4.793	701322	1798604	0.736	1.001 #
7) B delta-BHC	4.571	5.005	1302344	2388773	0.617	0.890 #
8) B Heptachlo...	5.102	5.814	1252544	2275164	0.718	0.797
9) A Endosulfan I	5.437	6.170	1160598	2182487	0.717	0.737
10) B trans-Chl...	5.327	6.048	1255594	2150529	0.723	0.704
11) B cis-Chlor...	5.385	6.121	1298666	2392891	0.746	0.774
12) B 4,4'-DDE	5.549	6.279	1145631	2070398	0.698	0.697
13) MA Dieldrin	5.678	6.427	1137010	2384066	0.637	0.777
14) MA Endrin	5.932	6.643	1490804	1505737	0.934	0.618 #
15) B Endosulfa...	6.203	6.854	1192412	2980570	0.756	1.132 #
16) A 4,4'-DDD	6.060	6.768	1013434	2366124	0.726	1.010 #
17) MA 4,4'-DDT	6.299	7.068	499696	1948434	0.378	0.856 #
18) B Endrin al...	6.371	6.977	1073952	1989824	0.791	0.890
19) B Endosulfa...	6.582	7.200	1354186	2142929	0.811	0.803
20) A Methoxychlor	6.843	7.526	541311	1041157	0.661	0.783
21) B Endrin ke...	7.069	7.669	1104274	1942999	0.651	0.747
22) Toxaphene-1	5.678	6.279	1137010	2070398	107.187	151.730 #
23) Toxaphene-2	0.000	6.643	0	1505737	N.D.	82.318
24) Toxaphene-3	6.203	7.068	1192412	1948434	41.808	82.416 #

(f)=RT Delta > 1/2 Window (#)=Amounts differ by > 25% (m)=manual int.

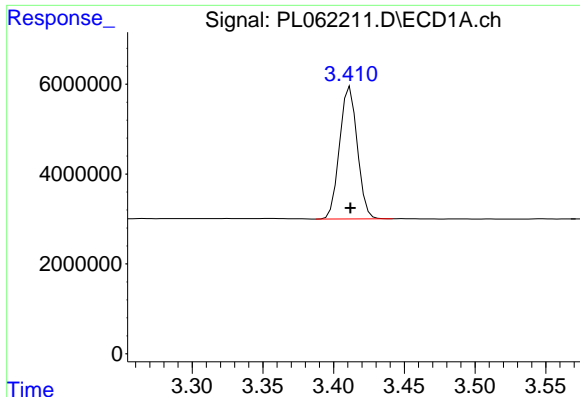
Data Path : Z:\pestpcbsrv\HPCHEM1\ECD_L\Data\PL101220\
 Data File : PL062211.D
 Signal(s) : Signal #1: ECD1A.ch Signal #2: ECD2B.ch
 Acq On : 12 Oct 2020 11:09
 Operator : DD\AJ
 Sample : L1955-14
 Misc :
 ALS Vial : 12 Sample Multiplier: 1

Integration File signal 1: autoint1.e
 Integration File signal 2: autoint2.e
 Quant Time: Oct 12 12:16:25 2020
 Quant Method : Z:\pestpcbsrv\HPCHEM1\ECD_L\methods\PL100920CLP.M
 Quant Title : GC Extractables
 QLast Update : Sat Oct 10 05:27:24 2020
 Response via : Initial Calibration
 Integrator: ChemStation

Volume Inj. : 1 µl
 Signal #1 Phase : ZB-MR2 Signal #2 Phase: ZB-MR1
 Signal #1 Info : 30M x 0.32mm x0.2 Signal #2 Info : 30M x 0.32mm x 0.50µm

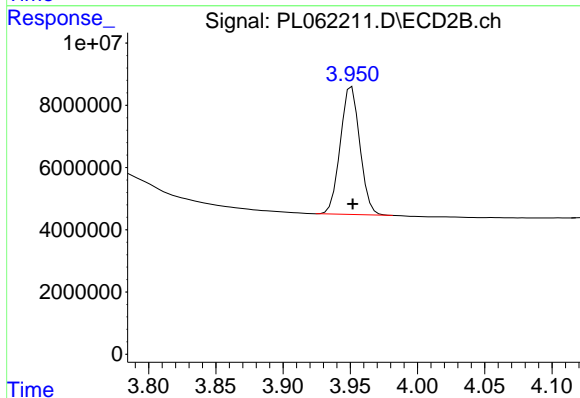


Instrument :
 ECD_L
 ClientSampleId :

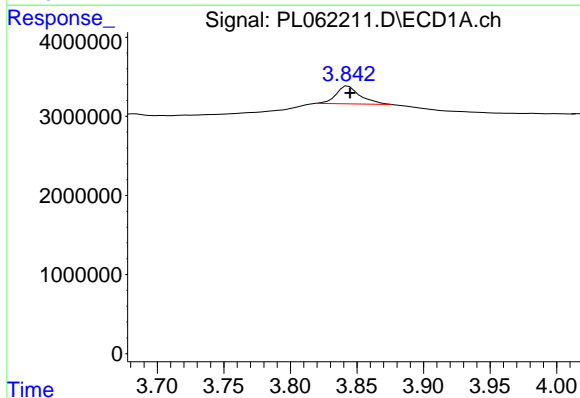


#1 Tetrachloro-m-xylene
 R.T.: 3.412 min
 Delta R.T.: 0.000 min
 Response: 25686971
 Conc: 14.41 ng/ml

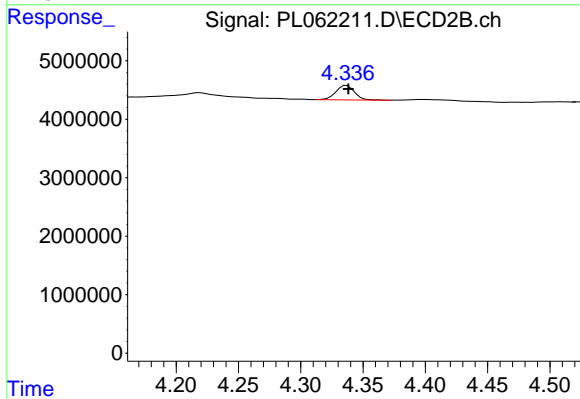
Instrument :
 ECD_L
 ClientSampleId :



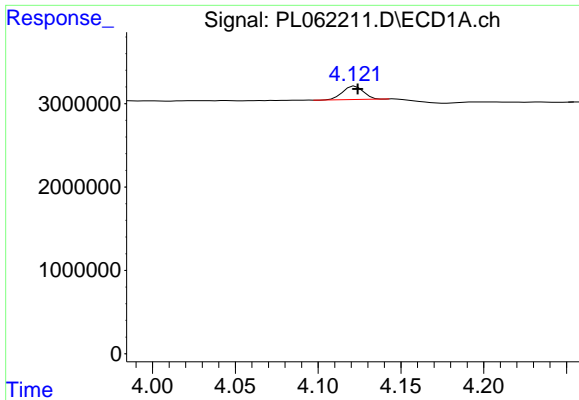
#1 Tetrachloro-m-xylene
 R.T.: 3.951 min
 Delta R.T.: 0.000 min
 Response: 41367273
 Conc: 14.51 ng/ml



#2 alpha-BHC
 R.T.: 3.843 min
 Delta R.T.: -0.001 min
 Response: 2791064
 Conc: 1.14 ng/ml

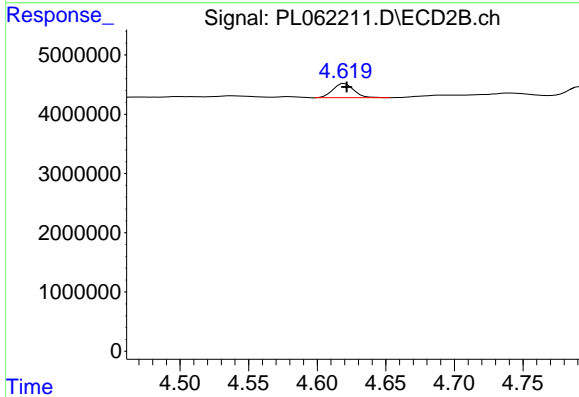


#2 alpha-BHC
 R.T.: 4.337 min
 Delta R.T.: -0.001 min
 Response: 2548822
 Conc: 0.64 ng/ml

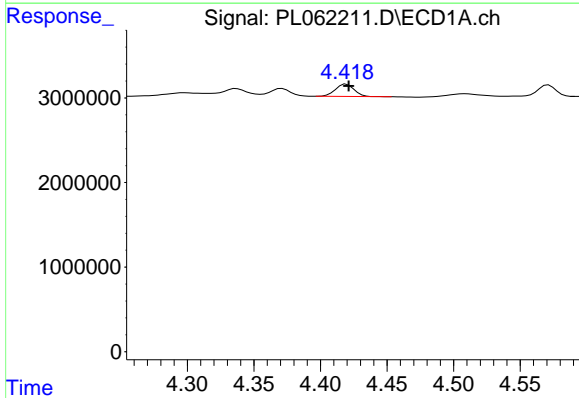


#3 gamma-BHC (Lindane)
 R.T.: 4.122 min
 Delta R.T.: -0.002 min
 Response: 1420682
 Conc: 0.63 ng/ml

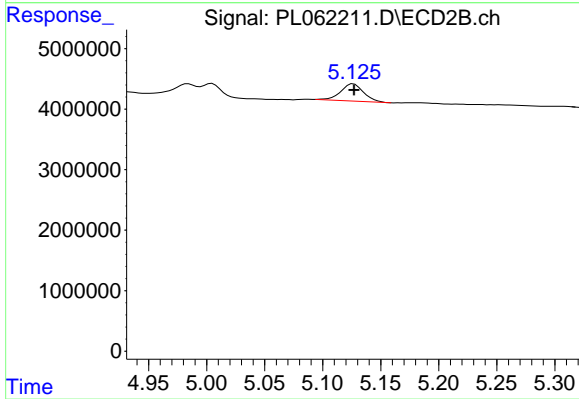
Instrument :
 ECD_L
 ClientSampleId :



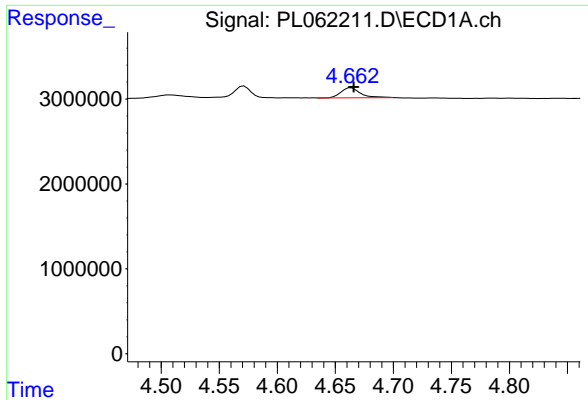
#3 gamma-BHC (Lindane)
 R.T.: 4.620 min
 Delta R.T.: -0.001 min
 Response: 2547398
 Conc: 0.68 ng/ml



#4 Heptachlor
 R.T.: 4.420 min
 Delta R.T.: -0.002 min
 Response: 1409763
 Conc: 0.70 ng/ml

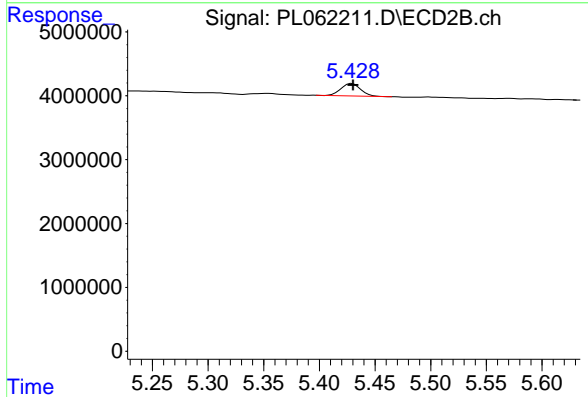


#4 Heptachlor
 R.T.: 5.127 min
 Delta R.T.: 0.000 min
 Response: 3872690
 Conc: 1.04 ng/ml

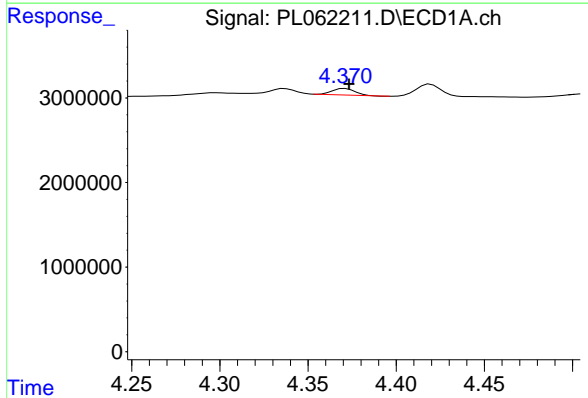


#5 Aldrin
 R.T.: 4.664 min
 Delta R.T.: -0.002 min
 Response: 1370278
 Conc: 0.75 ng/ml

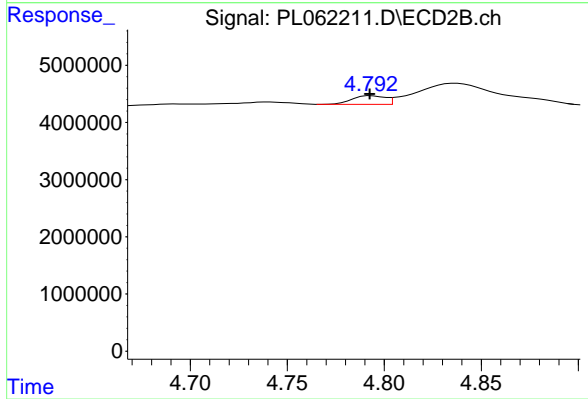
Instrument :
 ECD_L
 ClientSampleId :



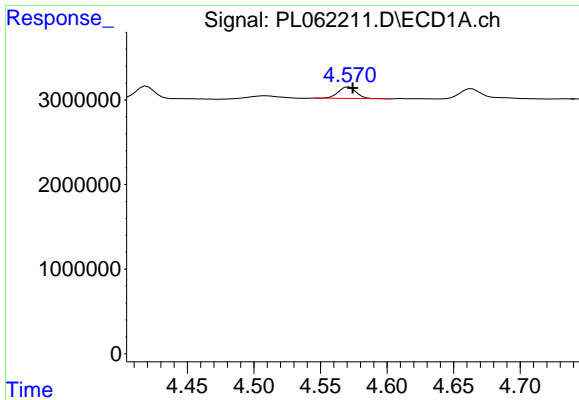
#5 Aldrin
 R.T.: 5.429 min
 Delta R.T.: -0.001 min
 Response: 2396556
 Conc: 0.71 ng/ml



#6 beta-BHC
 R.T.: 4.371 min
 Delta R.T.: -0.002 min
 Response: 701322
 Conc: 0.74 ng/ml

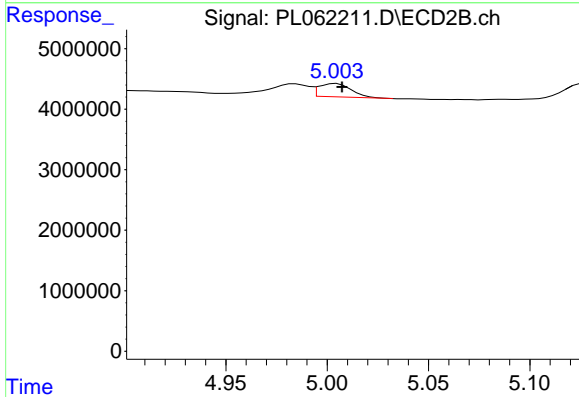


#6 beta-BHC
 R.T.: 4.793 min
 Delta R.T.: 0.000 min
 Response: 1798604
 Conc: 1.00 ng/ml

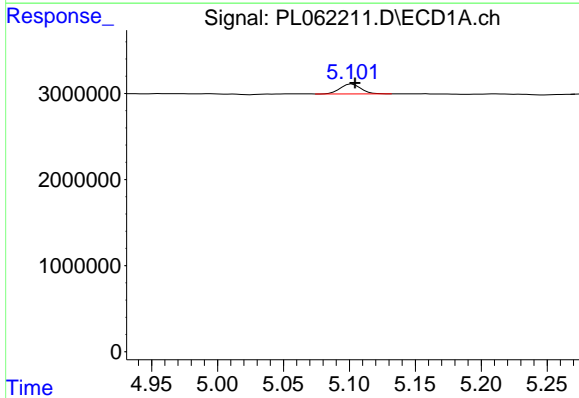


#7 delta-BHC
 R.T.: 4.571 min
 Delta R.T.: -0.003 min
 Response: 1302344
 Conc: 0.62 ng/ml

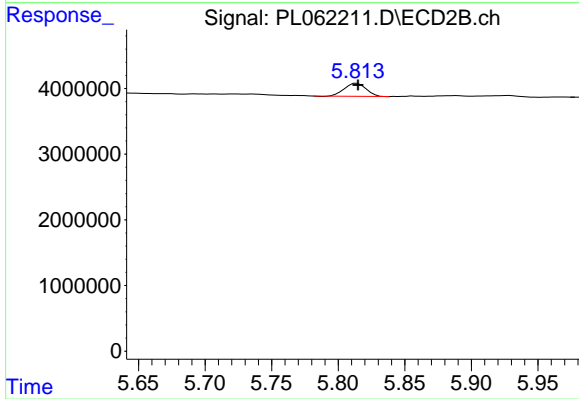
Instrument :
 ECD_L
 ClientSampled :



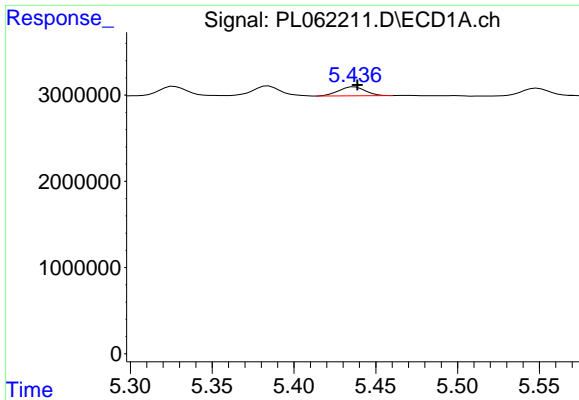
#7 delta-BHC
 R.T.: 5.005 min
 Delta R.T.: -0.003 min
 Response: 2388773
 Conc: 0.89 ng/ml



#8 Heptachlor epoxide
 R.T.: 5.102 min
 Delta R.T.: -0.002 min
 Response: 1252544
 Conc: 0.72 ng/ml

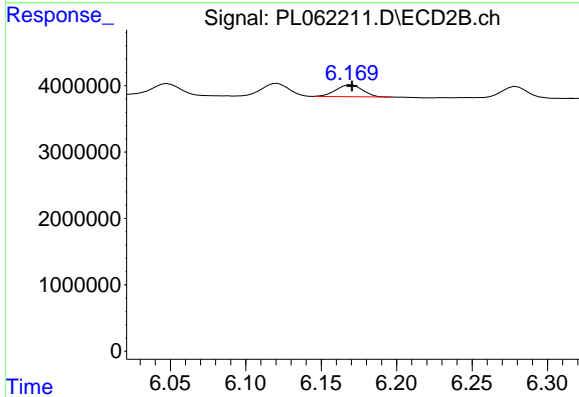


#8 Heptachlor epoxide
 R.T.: 5.814 min
 Delta R.T.: 0.000 min
 Response: 2275164
 Conc: 0.80 ng/ml

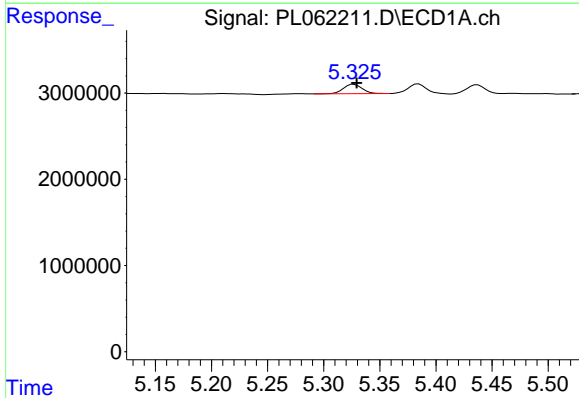


#9 Endosulfan I
 R.T.: 5.437 min
 Delta R.T.: -0.002 min
 Response: 1160598
 Conc: 0.72 ng/ml

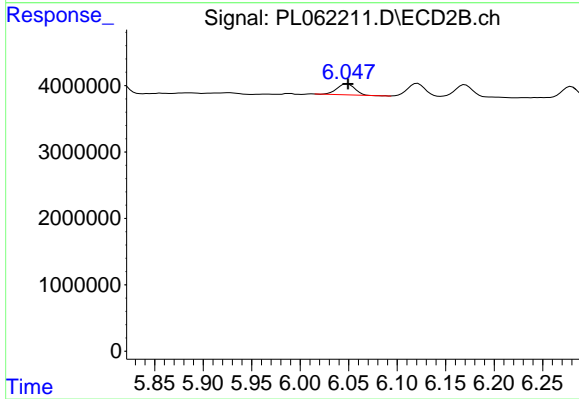
Instrument :
 ECD_L
 ClientSampleId :



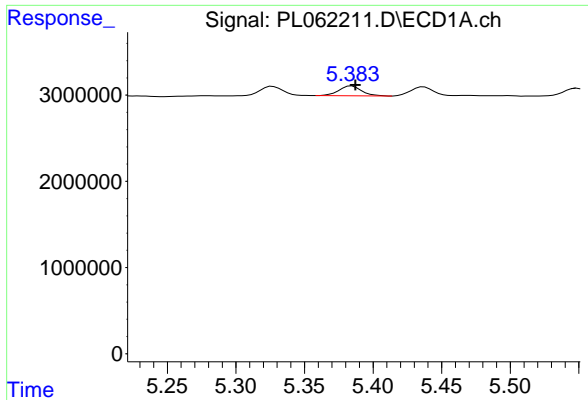
#9 Endosulfan I
 R.T.: 6.170 min
 Delta R.T.: 0.000 min
 Response: 2182487
 Conc: 0.74 ng/ml



#10 trans-Chlordane
 R.T.: 5.327 min
 Delta R.T.: -0.003 min
 Response: 1255594
 Conc: 0.72 ng/ml

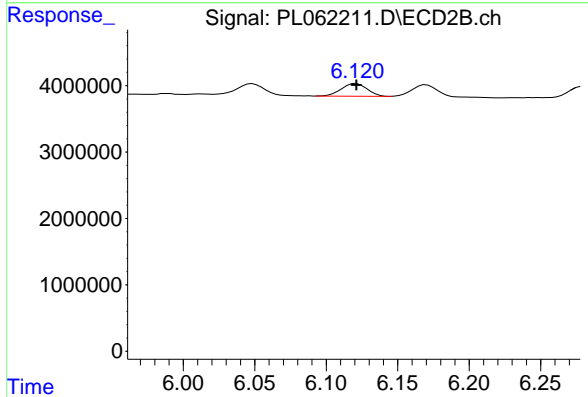


#10 trans-Chlordane
 R.T.: 6.048 min
 Delta R.T.: 0.000 min
 Response: 2150529
 Conc: 0.70 ng/ml

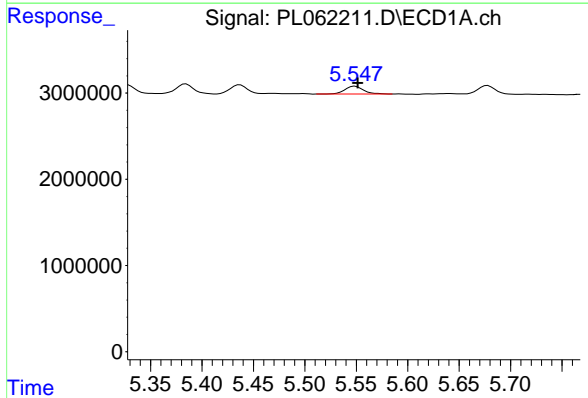


#11 cis-Chlordane
 R.T.: 5.385 min
 Delta R.T.: -0.003 min
 Response: 1298666
 Conc: 0.75 ng/ml

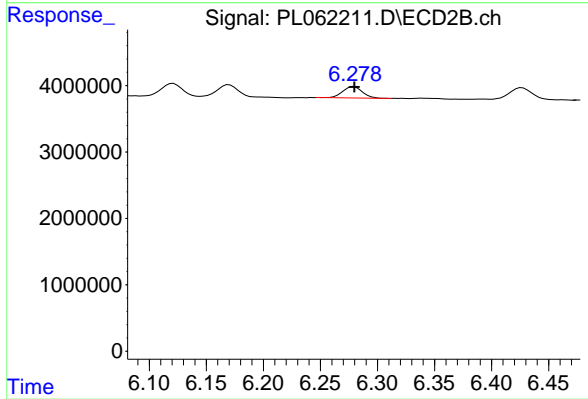
Instrument :
 ECD_L
 ClientSampleId :



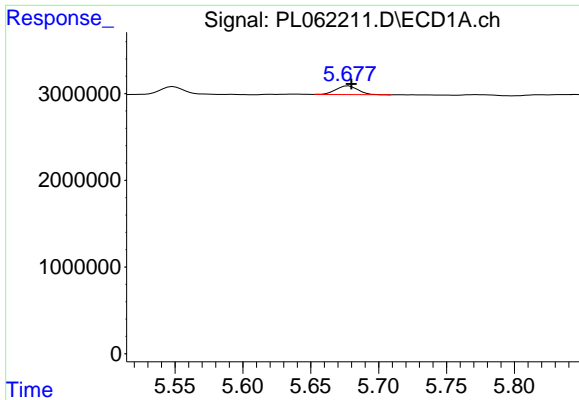
#11 cis-Chlordane
 R.T.: 6.121 min
 Delta R.T.: 0.000 min
 Response: 2392891
 Conc: 0.77 ng/ml



#12 4,4'-DDE
 R.T.: 5.549 min
 Delta R.T.: -0.003 min
 Response: 1145631
 Conc: 0.70 ng/ml



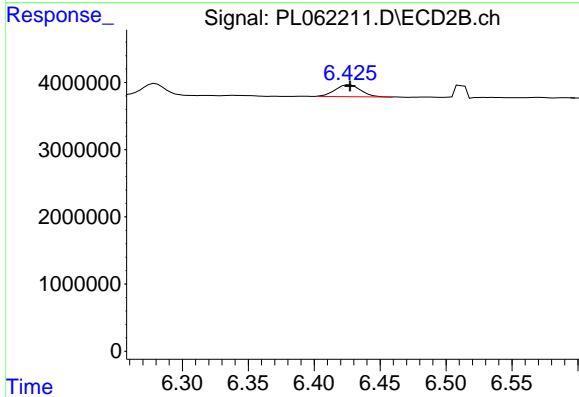
#12 4,4'-DDE
 R.T.: 6.279 min
 Delta R.T.: 0.000 min
 Response: 2070398
 Conc: 0.70 ng/ml



#13 Dieldrin

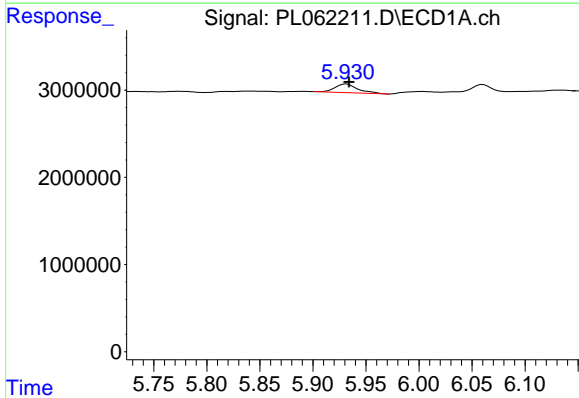
R.T.: 5.678 min
 Delta R.T.: -0.002 min
 Response: 1137010
 Conc: 0.64 ng/ml

Instrument :
 ECD_L
 ClientSampleId :



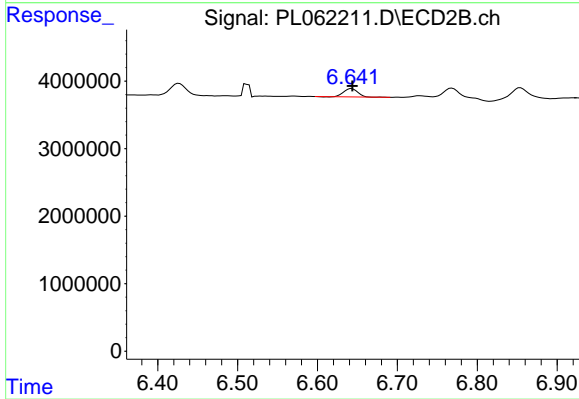
#13 Dieldrin

R.T.: 6.427 min
 Delta R.T.: 0.000 min
 Response: 2384066
 Conc: 0.78 ng/ml



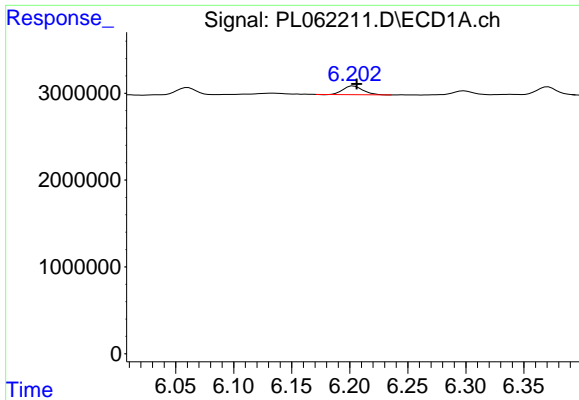
#14 Endrin

R.T.: 5.932 min
 Delta R.T.: -0.002 min
 Response: 1490804
 Conc: 0.93 ng/ml



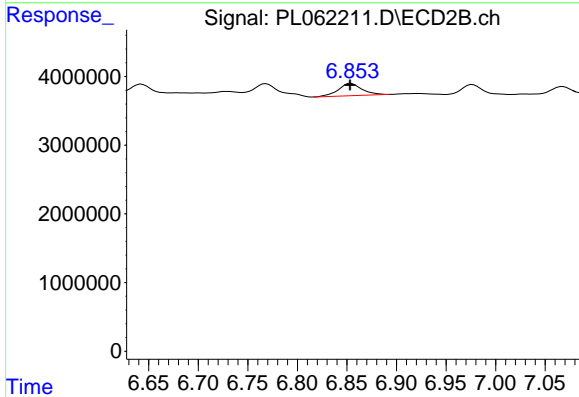
#14 Endrin

R.T.: 6.643 min
 Delta R.T.: -0.001 min
 Response: 1505737
 Conc: 0.62 ng/ml

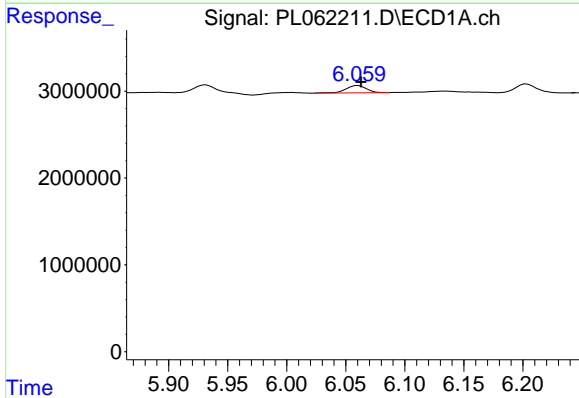


#15 Endosulfan II
 R.T.: 6.203 min
 Delta R.T.: -0.003 min
 Response: 1192412
 Conc: 0.76 ng/ml

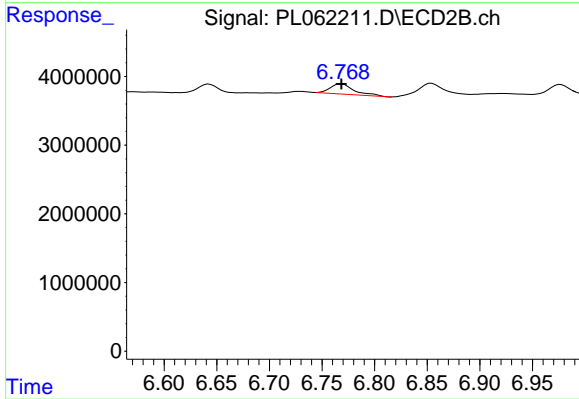
Instrument :
 ECD_L
 ClientSampleId :



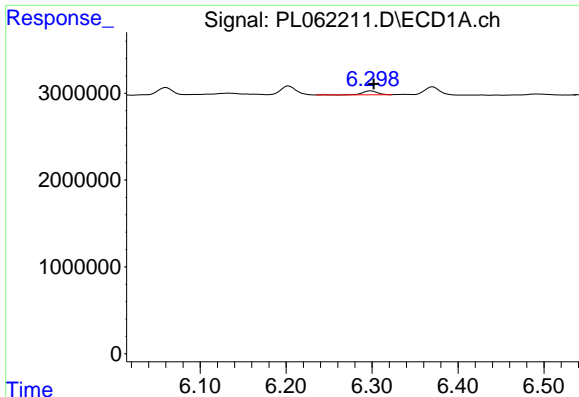
#15 Endosulfan II
 R.T.: 6.854 min
 Delta R.T.: 0.000 min
 Response: 2980570
 Conc: 1.13 ng/ml



#16 4,4'-DDD
 R.T.: 6.060 min
 Delta R.T.: -0.002 min
 Response: 1013434
 Conc: 0.73 ng/ml



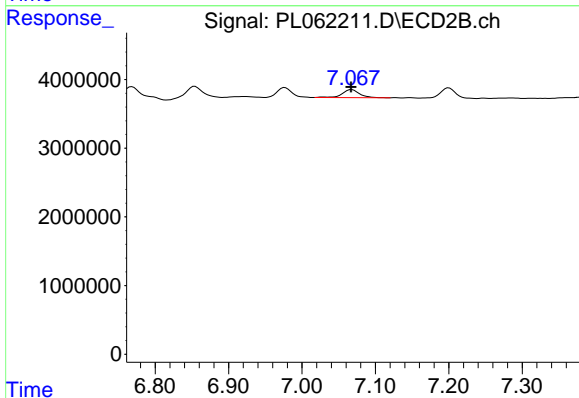
#16 4,4'-DDD
 R.T.: 6.768 min
 Delta R.T.: 0.000 min
 Response: 2366124
 Conc: 1.01 ng/ml



#17 4,4'-DDT

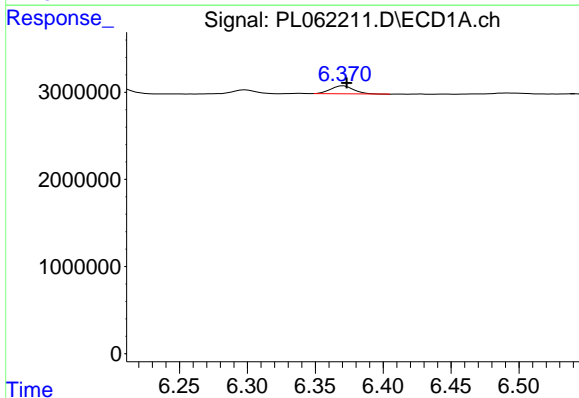
R.T.: 6.299 min
 Delta R.T.: -0.003 min
 Response: 499696
 Conc: 0.38 ng/ml

Instrument :
 ECD_L
 ClientSampled :



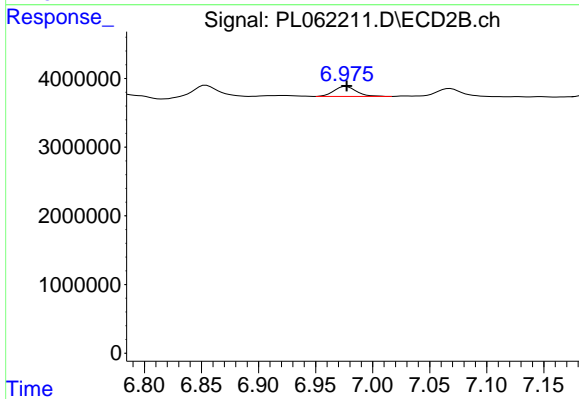
#17 4,4'-DDT

R.T.: 7.068 min
 Delta R.T.: 0.001 min
 Response: 1948434
 Conc: 0.86 ng/ml



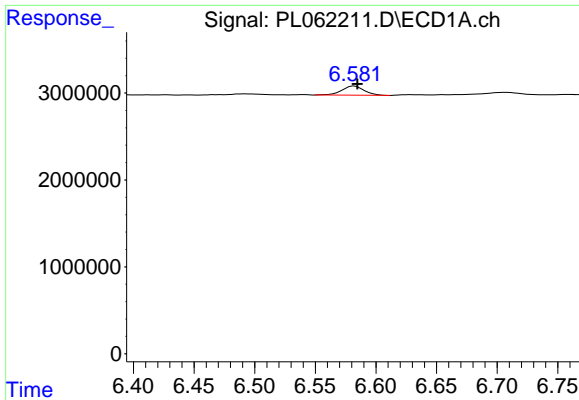
#18 Endrin aldehyde

R.T.: 6.371 min
 Delta R.T.: -0.002 min
 Response: 1073952
 Conc: 0.79 ng/ml



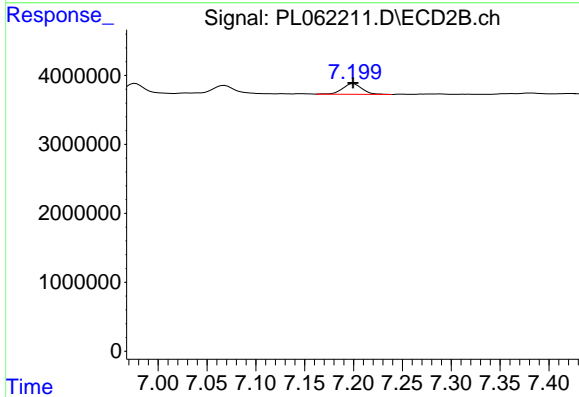
#18 Endrin aldehyde

R.T.: 6.977 min
 Delta R.T.: 0.000 min
 Response: 1989824
 Conc: 0.89 ng/ml

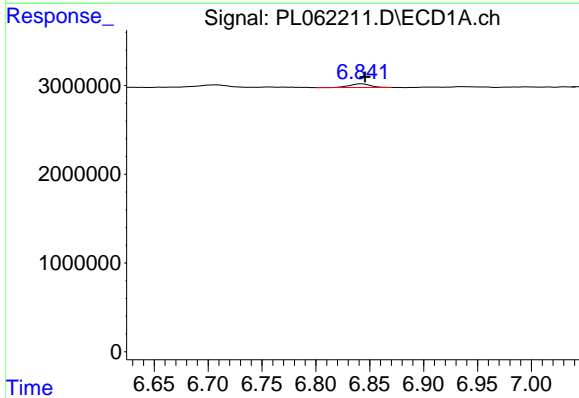


#19 Endosulfan Sulfate
 R.T.: 6.582 min
 Delta R.T.: -0.002 min
 Response: 1354186
 Conc: 0.81 ng/ml

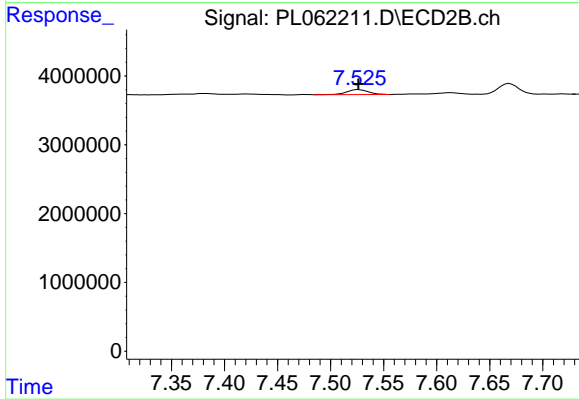
Instrument :
 ECD_L
 ClientSampleId :



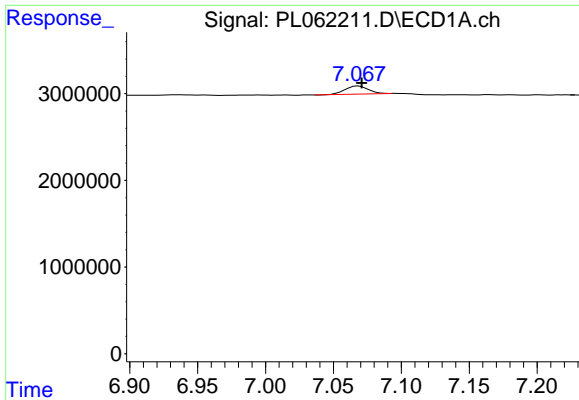
#19 Endosulfan Sulfate
 R.T.: 7.200 min
 Delta R.T.: 0.000 min
 Response: 2142929
 Conc: 0.80 ng/ml



#20 Methoxychlor
 R.T.: 6.843 min
 Delta R.T.: -0.003 min
 Response: 541311
 Conc: 0.66 ng/ml

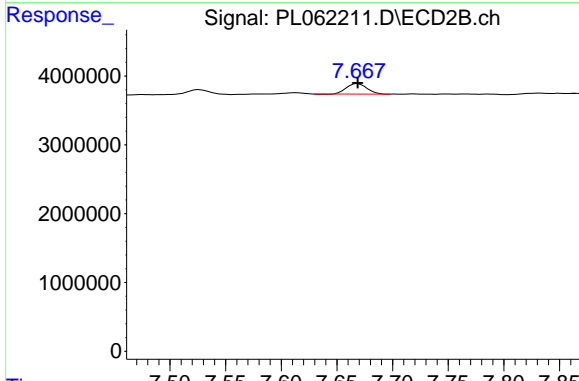


#20 Methoxychlor
 R.T.: 7.526 min
 Delta R.T.: 0.000 min
 Response: 1041157
 Conc: 0.78 ng/ml

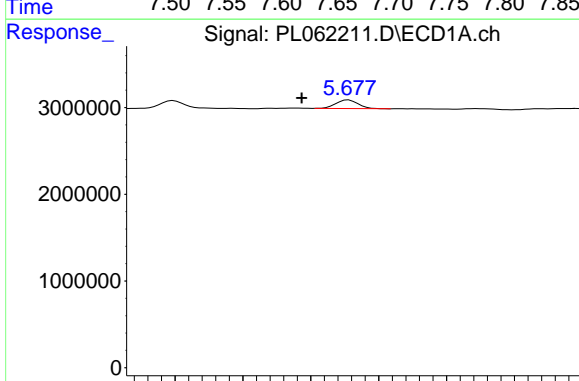


#21 Endrin ketone
 R.T.: 7.069 min
 Delta R.T.: -0.002 min
 Response: 1104274
 Conc: 0.65 ng/ml

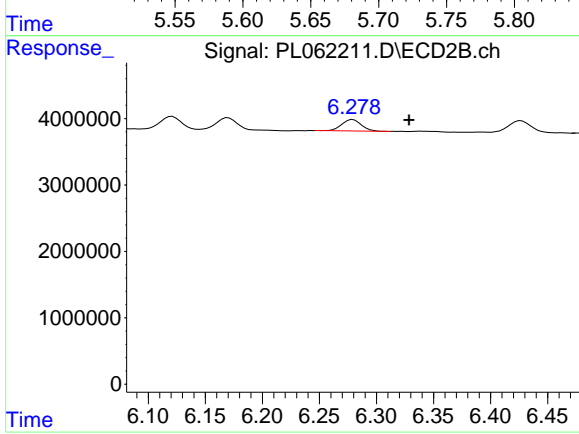
Instrument :
 ECD_L
 ClientSampled :



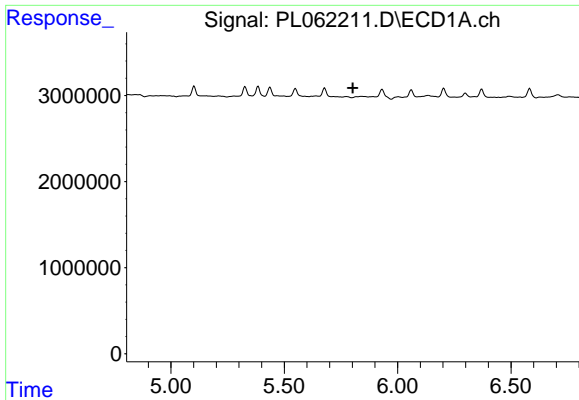
#21 Endrin ketone
 R.T.: 7.669 min
 Delta R.T.: 0.000 min
 Response: 1942999
 Conc: 0.75 ng/ml



#22 Toxaphene-1
 R.T.: 5.678 min
 Delta R.T.: 0.035 min
 Response: 1137010
 Conc: 107.19 ng/ml



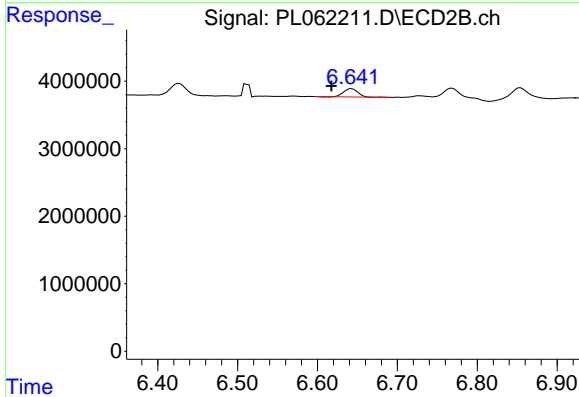
#22 Toxaphene-1
 R.T.: 6.279 min
 Delta R.T.: -0.049 min
 Response: 2070398
 Conc: 151.73 ng/ml



#23 Toxaphene-2

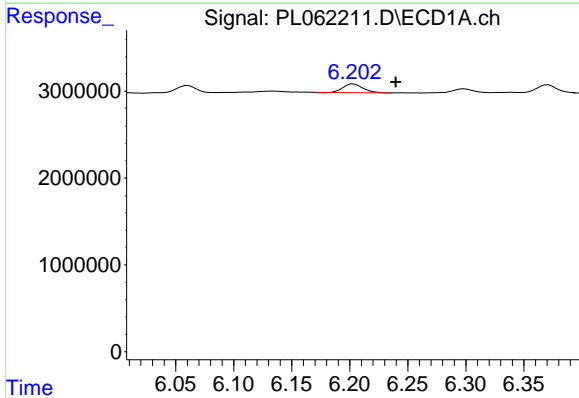
R.T.: 0.000 min
 Exp R.T.: 5.802 min
 Response: 0
 Conc: N.D.

Instrument :
 ECD_L
 ClientSampleId :



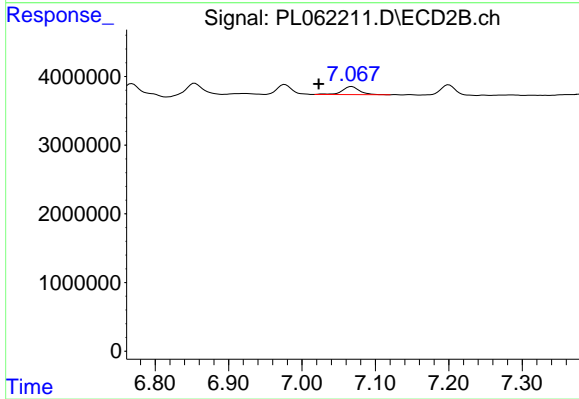
#23 Toxaphene-2

R.T.: 6.643 min
 Delta R.T.: 0.025 min
 Response: 1505737
 Conc: 82.32 ng/ml



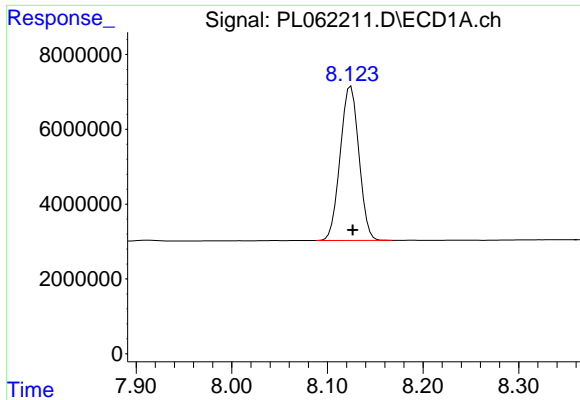
#24 Toxaphene-3

R.T.: 6.203 min
 Delta R.T.: -0.036 min
 Response: 1192412
 Conc: 41.81 ng/ml



#24 Toxaphene-3

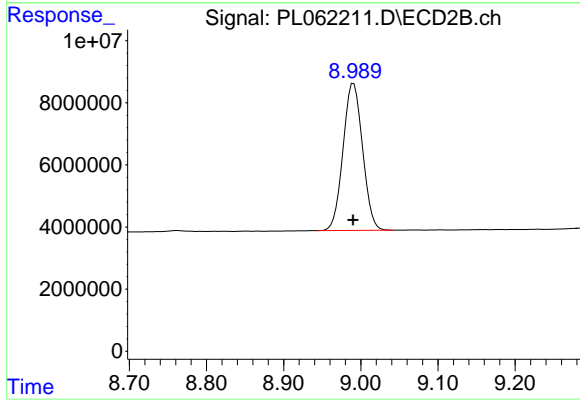
R.T.: 7.068 min
 Delta R.T.: 0.045 min
 Response: 1948434
 Conc: 82.42 ng/ml



#27 Decachlorobiphenyl

R.T.: 8.125 min
Delta R.T.: -0.002 min
Response: 56135215
Conc: 29.53 ng/ml

Instrument :
ECD_L
ClientSampleId :



#27 Decachlorobiphenyl

R.T.: 8.991 min
Delta R.T.: 0.000 min
Response: 82957036
Conc: 29.85 ng/ml