

Data Path : Z:\pestpcbsrv\HPCHEM1\ECD_L\Data\PL101220\
 Data File : PL062220.D
 Signal(s) : Signal #1: ECD1A.ch Signal #2: ECD2B.ch
 Acq On : 12 Oct 2020 13:17
 Operator : DD\AJ
 Sample : PIBLK57
 Misc :
 ALS Vial : 2 Sample Multiplier: 1

Instrument :
 ECD_L
 ClientSampleId :
 PIBLK57

Integration File signal 1: autoint1.e
 Integration File signal 2: autoint2.e
 Quant Time: Oct 12 13:42:56 2020
 Quant Method : Z:\pestpcbsrv\HPCHEM1\ECD_L\methods\PL100920CLP.M
 Quant Title : GC Extractables
 QLast Update : Sat Oct 10 05:27:24 2020
 Response via : Initial Calibration
 Integrator: ChemStation

Volume Inj. : 1 µl
 Signal #1 Phase : ZB-MR2 Signal #2 Phase: ZB-MR1
 Signal #1 Info : 30M x 0.32mm x0.2 Signal #2 Info : 30M x 0.32mm x 0.50µm

Compound	RT#1	RT#2	Resp#1	Resp#2	ng/ml	ng/ml

System Monitoring Compounds						
1) SA Tetrachlo...	3.412	3.951	37774277	60370595	21.184	21.183
27) SA Decachlor...	8.124	8.991	72224800	108.5E6	37.994	39.051

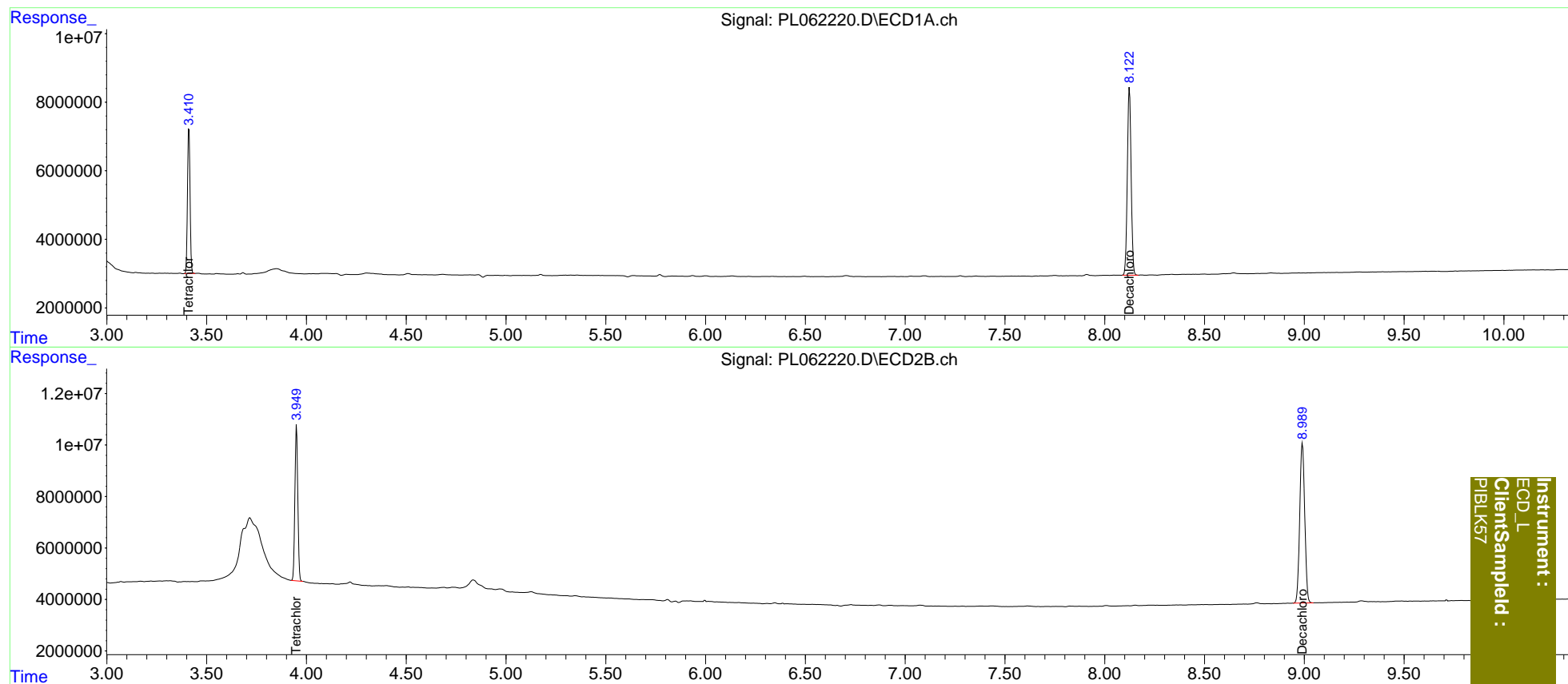
Target Compounds

(f)=RT Delta > 1/2 Window (#)=Amounts differ by > 25% (m)=manual int.

Data Path : Z:\pestpcbsrv\HPCHEM1\ECD_L\Data\PL101220\
Data File : PL062220.D
Signal(s) : Signal #1: ECD1A.ch Signal #2: ECD2B.ch
Acq On : 12 Oct 2020 13:17
Operator : DD\AJ
Sample : PIBLK57
Misc :
ALS Vial : 2 Sample Multiplier: 1

Integration File signal 1: autoint1.e
Integration File signal 2: autoint2.e
Quant Time: Oct 12 13:42:56 2020
Quant Method : Z:\pestpcbsrv\HPCHEM1\ECD_L\methods\PL100920CLP.M
Quant Title : GC Extractables
QLast Update : Sat Oct 10 05:27:24 2020
Response via : Initial Calibration
Integrator: ChemStation

Volume Inj. : 1 µl
Signal #1 Phase : ZB-MR2 Signal #2 Phase: ZB-MR1
Signal #1 Info : 30M x 0.32mm x 0.2 Signal #2 Info : 30M x 0.32mm x 0.50µm



Instrument :
ECD_L
ClientSampleId :
PIBLK57