

Data Path : Z:\pestpcbsrv\HPCHEM1\ECD\_L\Data\PL101220\  
 Data File : PL062225.D  
 Signal(s) : Signal #1: ECD1A.ch Signal #2: ECD2B.ch  
 Acq On : 12 Oct 2020 16:30  
 Operator : DD\AJ  
 Sample : PB131853BL  
 Misc :  
 ALS Vial : 25 Sample Multiplier: 1

Instrument :  
 ECD\_L  
 ClientSampleId :  
 PBLK53

Integration File signal 1: autoint1.e  
 Integration File signal 2: autoint2.e  
 Quant Time: Oct 12 17:31:26 2020  
 Quant Method : Z:\pestpcbsrv\HPCHEM1\ECD\_L\methods\PL100920CLP.M  
 Quant Title : GC Extractables  
 QLast Update : Sat Oct 10 05:27:24 2020  
 Response via : Initial Calibration  
 Integrator: ChemStation

Volume Inj. : 1 µl  
 Signal #1 Phase : ZB-MR2 Signal #2 Phase: ZB-MR1  
 Signal #1 Info : 30M x 0.32mm x0.2 Signal #2 Info : 30M x 0.32mm x 0.50µm

Compound	RT#1	RT#2	Resp#1	Resp#2	ng/ml	ng/ml
-----						
System Monitoring Compounds						
1) SA Tetrachlo...	3.412	3.950	35765661	56044577	20.058	19.665
27) SA Decachlor...	8.125	8.992	67926719	101.2E6	35.733	36.432

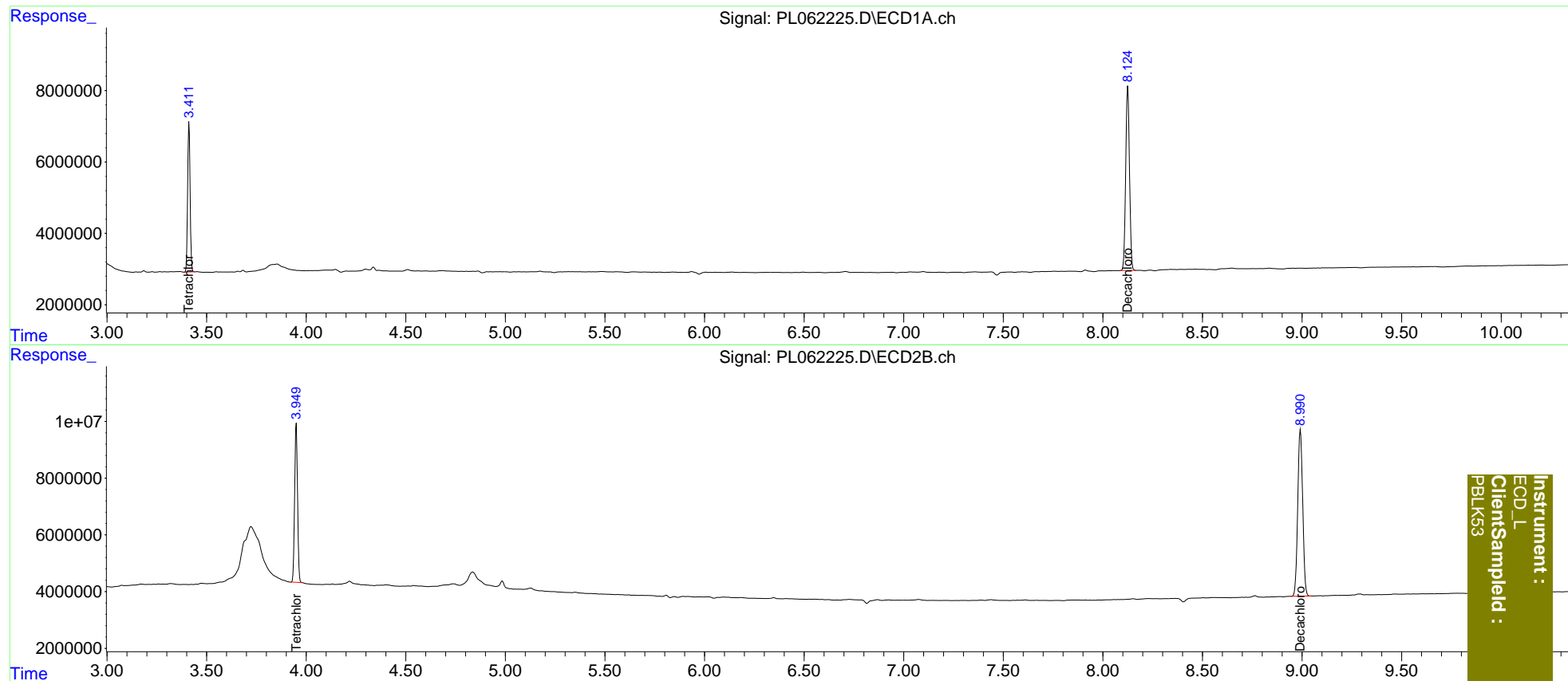
Target Compounds

(f)=RT Delta > 1/2 Window (#)=Amounts differ by > 25% (m)=manual int.

Data Path : Z:\pestpcbsrv\HPCHEM1\ECD\_L\Data\PL101220\  
 Data File : PL062225.D  
 Signal(s) : Signal #1: ECD1A.ch Signal #2: ECD2B.ch  
 Acq On : 12 Oct 2020 16:30  
 Operator : DD\AJ  
 Sample : PB131853BL  
 Misc :  
 ALS Vial : 25 Sample Multiplier: 1

Integration File signal 1: autoint1.e  
 Integration File signal 2: autoint2.e  
 Quant Time: Oct 12 17:31:26 2020  
 Quant Method : Z:\pestpcbsrv\HPCHEM1\ECD\_L\methods\PL100920CLP.M  
 Quant Title : GC Extractables  
 QLast Update : Sat Oct 10 05:27:24 2020  
 Response via : Initial Calibration  
 Integrator: ChemStation

Volume Inj. : 1 µl  
 Signal #1 Phase : ZB-MR2 Signal #2 Phase: ZB-MR1  
 Signal #1 Info : 30M x 0.32mm x0.2 Signal #2 Info : 30M x 0.32mm x 0.50µm



Instrument :  
 ECD\_L  
 ClientSampleId :  
 PBLK53