

Data Path : Z:\pestpcbsrv\HPCHEM1\ECD_L\Data\PL101320\
 Data File : PL062238.D
 Signal(s) : Signal #1: ECD1A.ch Signal #2: ECD2B.ch
 Acq On : 12 Oct 2020 20:08
 Operator : DD\AJ
 Sample : PCHLORICC750
 Misc :
 ALS Vial : 11 Sample Multiplier: 1

Instrument :
 ECD_L
 ClientSampleId :
 PCHLORICC750

Integration File signal 1: autoint1.e
 Integration File signal 2: autoint2.e
 Quant Time: Oct 13 04:20:33 2020
 Quant Method : Z:\pestpcbsrv\HPCHEM1\ECD_L\methods\PL101320.M
 Quant Title : GC Extractables
 QLast Update : Tue Oct 13 04:19:56 2020
 Response via : Initial Calibration
 Integrator: ChemStation

Volume Inj. : 1 µl
 Signal #1 Phase : ZB-MR2 Signal #2 Phase: ZB-MR1
 Signal #1 Info : 30M x 0.32mm x0.2 Signal #2 Info : 30M x 0.32mm x0.5µm

	Compound	RT#1	RT#2	Resp#1	Resp#2	ng/ml	ng/ml

System Monitoring Compounds							
1)	SA Tetrachlo...	3.411	3.952	149.7E6	208.7E6	75.581	74.499
28)	SA Decachlor...	8.124	8.993	131.2E6	196.5E6	72.781	72.633
Target Compounds							
23)	Chlordane-1	4.270	4.939	38982299	76416500	741.215	747.398
24)	Chlordane-2	4.766	5.406	44343754	77956283	734.896	733.859
25)	Chlordane-3	5.329	6.050	121.4E6	315.9E6	745.318	751.760
26)	Chlordane-4	5.385	6.125	101.6E6	380.8E6	746.576	752.002
27)	Chlordane-5	6.213	6.926	41712422	61923220	764.502	747.888

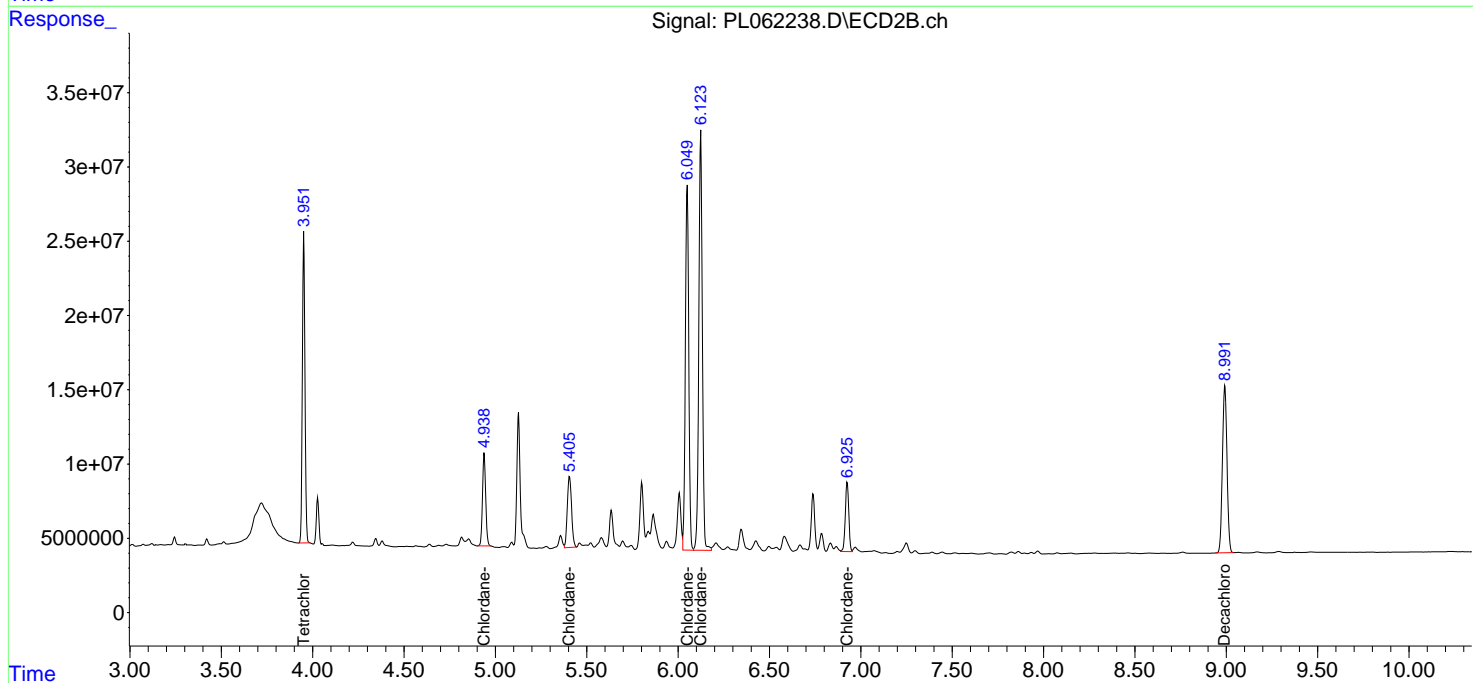
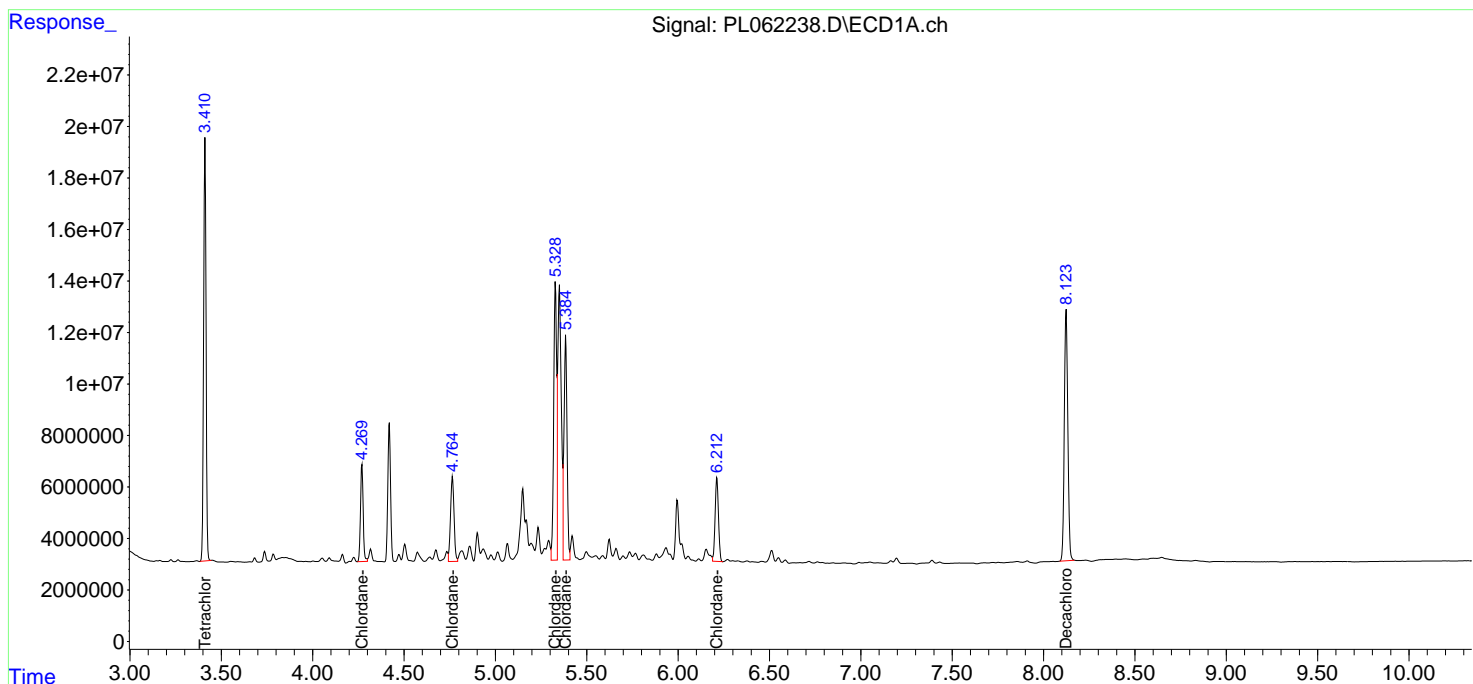
(f)=RT Delta > 1/2 Window (#)=Amounts differ by > 25% (m)=manual int.

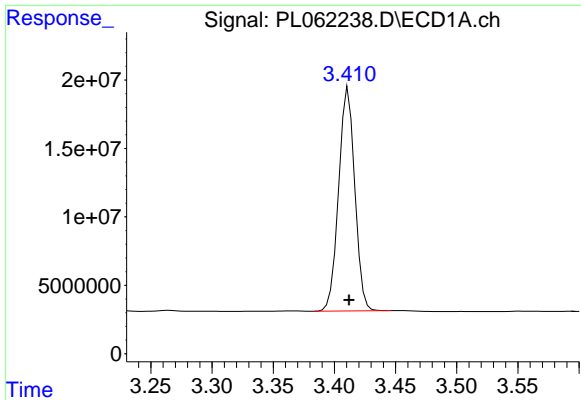
Data Path : Z:\pestpcbsrv\HPCHEM1\ECD_L\Data\PL101320\
 Data File : PL062238.D
 Signal(s) : Signal #1: ECD1A.ch Signal #2: ECD2B.ch
 Acq On : 12 Oct 2020 20:08
 Operator : DD\AJ
 Sample : PCHLORICC750
 Misc :
 ALS Vial : 11 Sample Multiplier: 1

Instrument :
 ECD_L
 ClientSampleId :
 PCHLORICC750

Integration File signal 1: autoint1.e
 Integration File signal 2: autoint2.e
 Quant Time: Oct 13 04:20:33 2020
 Quant Method : Z:\pestpcbsrv\HPCHEM1\ECD_L\methods\PL101320.M
 Quant Title : GC Extractables
 QLast Update : Tue Oct 13 04:19:56 2020
 Response via : Initial Calibration
 Integrator: ChemStation

Volume Inj. : 1 µl
 Signal #1 Phase : ZB-MR2 Signal #2 Phase: ZB-MR1
 Signal #1 Info : 30M x 0.32mm x0.2 Signal #2 Info : 30M x 0.32mm x0.5µm

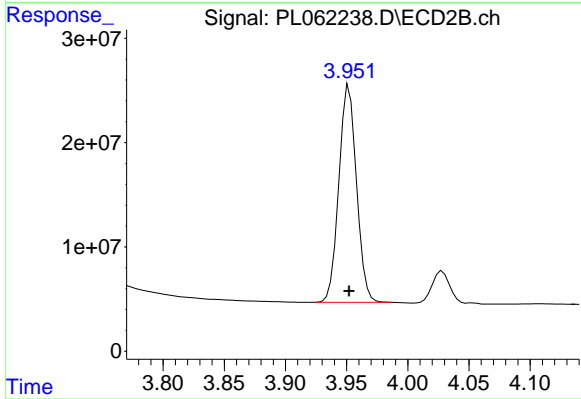




#1 Tetrachloro-m-xylene

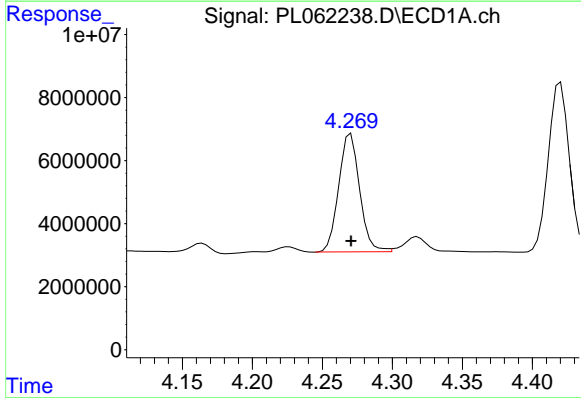
R.T.: 3.411 min
 Delta R.T.: 0.000 min
 Response: 149730142
 Conc: 75.58 ng/ml

Instrument :
 ECD_L
 ClientSampled :
 PCHLORICC750



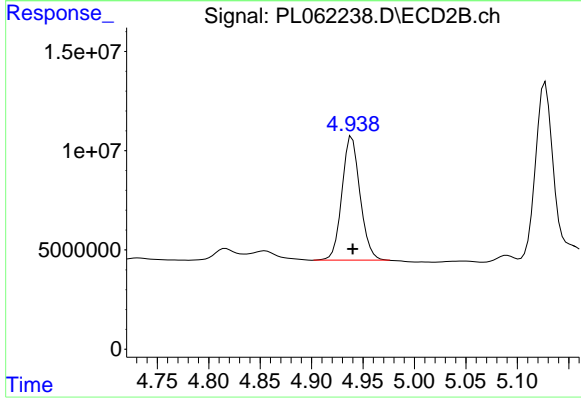
#1 Tetrachloro-m-xylene

R.T.: 3.952 min
 Delta R.T.: 0.000 min
 Response: 208691997
 Conc: 74.50 ng/ml



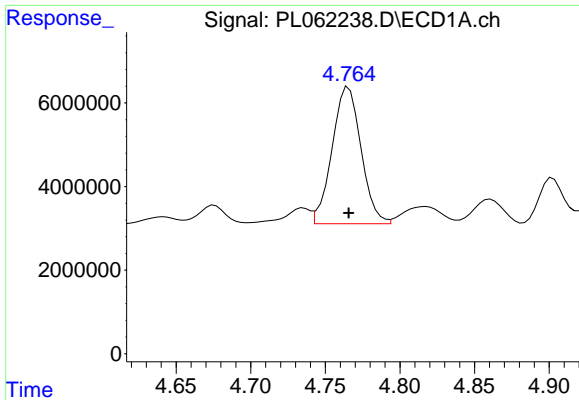
#23 Chlordane-1

R.T.: 4.270 min
 Delta R.T.: 0.000 min
 Response: 38982299
 Conc: 741.21 ng/ml



#23 Chlordane-1

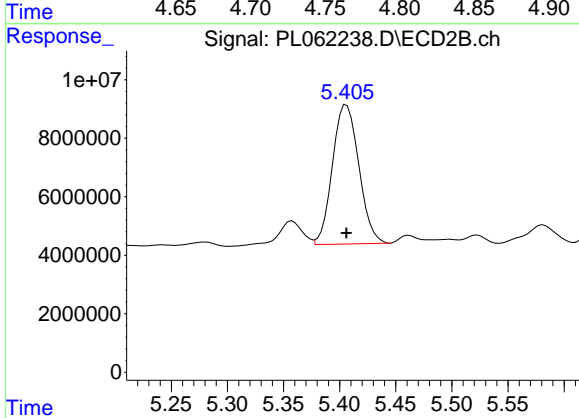
R.T.: 4.939 min
 Delta R.T.: 0.000 min
 Response: 76416500
 Conc: 747.40 ng/ml



#24 Chlordane-2

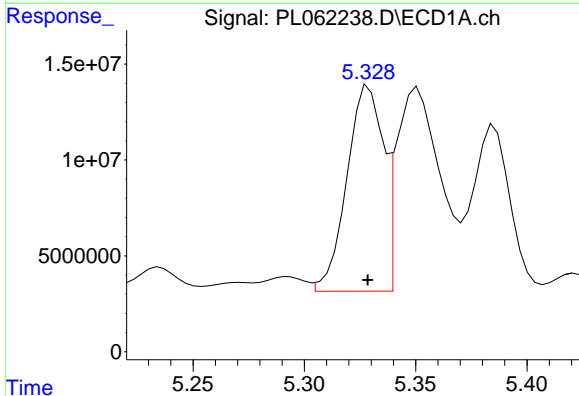
R.T.: 4.766 min
 Delta R.T.: 0.000 min
 Response: 44343754
 Conc: 734.90 ng/ml

Instrument :
 ECD_L
 ClientSampleId :
 PCHLORICC750



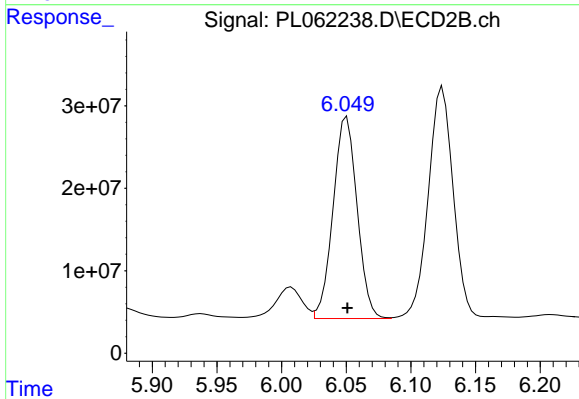
#24 Chlordane-2

R.T.: 5.406 min
 Delta R.T.: 0.000 min
 Response: 77956283
 Conc: 733.86 ng/ml



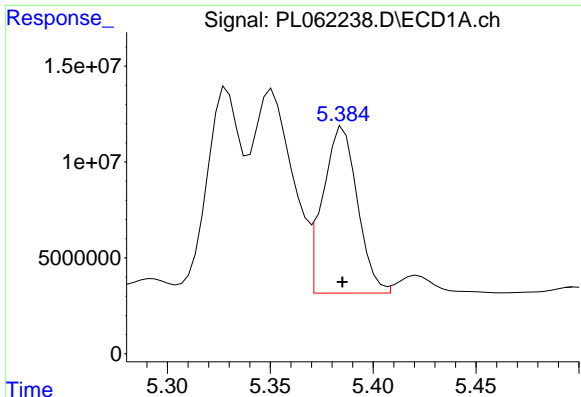
#25 Chlordane-3

R.T.: 5.329 min
 Delta R.T.: 0.000 min
 Response: 121391396
 Conc: 745.32 ng/ml



#25 Chlordane-3

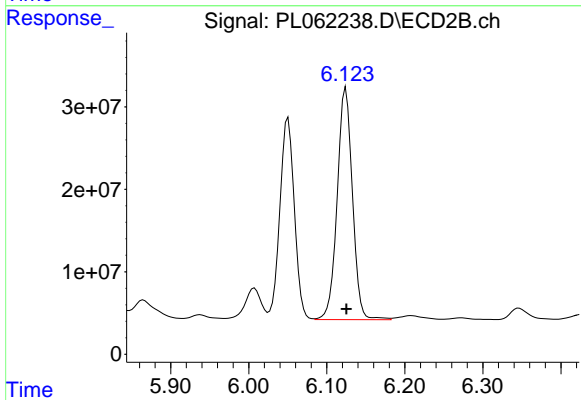
R.T.: 6.050 min
 Delta R.T.: 0.000 min
 Response: 315918704
 Conc: 751.76 ng/ml



#26 Chlordane-4

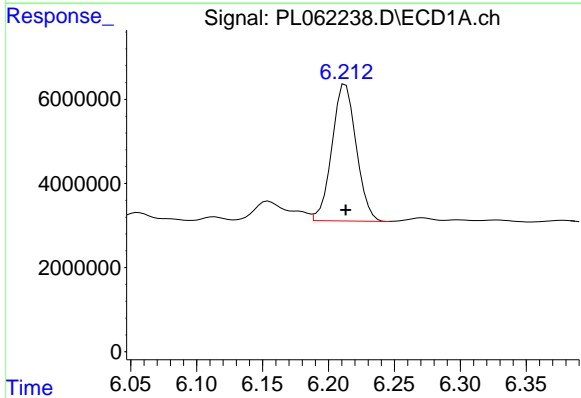
R.T.: 5.385 min
 Delta R.T.: 0.000 min
 Response: 101559961
 Conc: 746.58 ng/ml

Instrument :
 ECD_L
 ClientSampleId :
 PCHLORICC750



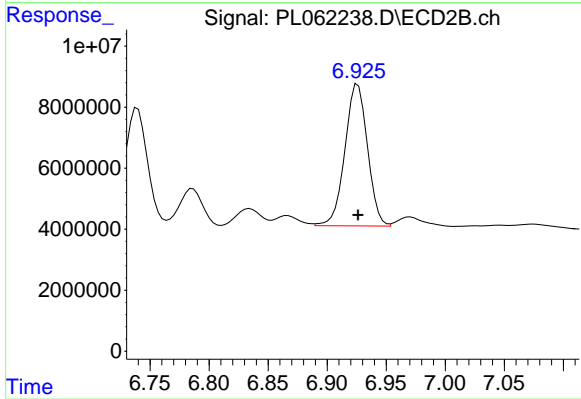
#26 Chlordane-4

R.T.: 6.125 min
 Delta R.T.: 0.000 min
 Response: 380831835
 Conc: 752.00 ng/ml



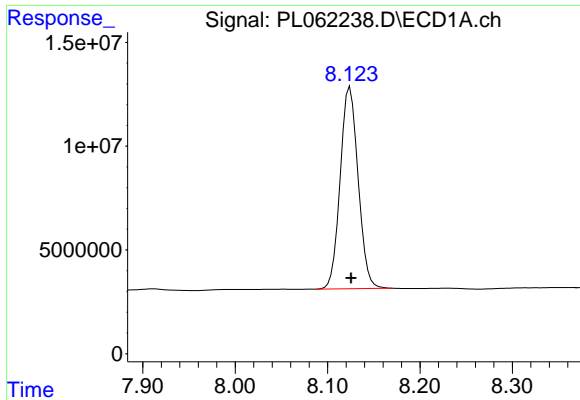
#27 Chlordane-5

R.T.: 6.213 min
 Delta R.T.: 0.000 min
 Response: 41712422
 Conc: 764.50 ng/ml



#27 Chlordane-5

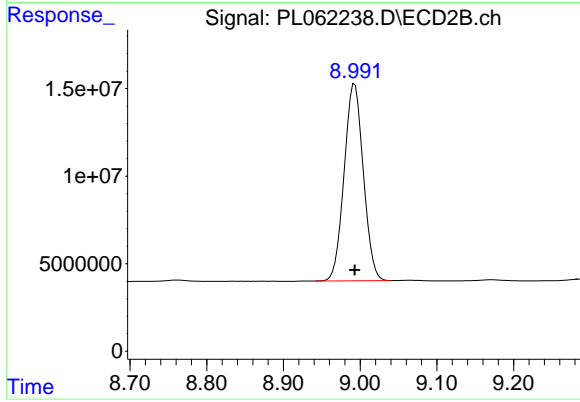
R.T.: 6.926 min
 Delta R.T.: 0.000 min
 Response: 61923220
 Conc: 747.89 ng/ml



#28 Decachlorobiphenyl

R.T.: 8.124 min
Delta R.T.: -0.001 min
Response: 131203814
Conc: 72.78 ng/ml

Instrument :
ECD_L
ClientSampleId :
PCHLORICC750



#28 Decachlorobiphenyl

R.T.: 8.993 min
Delta R.T.: 0.000 min
Response: 196456673
Conc: 72.63 ng/ml