

Data Path : Z:\pestpcbsrv\HPCHEM1\ECD_L\Data\PL101025\
 Data File : PL097596.D
 Signal(s) : Signal #1: ECD1A.ch Signal #2: ECD2B.ch
 Acq On : 10 Oct 2025 10:11
 Operator : AR\AJ
 Sample : I.BLK
 Misc :
 ALS Vial : 2 Sample Multiplier: 1

Instrument :
 ECD_L
 ClientSampleId :
 I.BLK

Integration File signal 1: autoint1.e
 Integration File signal 2: autoint2.e
 Quant Time: Oct 11 07:17:35 2025
 Quant Method : Z:\pestpcbsrv\HPCHEM1\ECD_L\methods\PL100725.M
 Quant Title : GC Extractables
 QLast Update : Tue Oct 07 16:47:00 2025
 Response via : Initial Calibration
 Integrator: ChemStation

Volume Inj. : 1 µl
 Signal #1 Phase : ZB-MR1 Signal #2 Phase: ZB-MR2
 Signal #1 Info : 30M x 0.32mm x0.5 Signal #2 Info : 30M x 0.32mm x0.25µm

Compound	RT#1	RT#2	Resp#1	Resp#2	ng/ml	ng/ml
System Monitoring Compounds						
1) SA Tetrachlo...	3.523	2.821	93609946	129.4E6	22.962	21.254
28) SA Decachlor...	8.994	7.977	72140120	102.3E6	24.260	19.705
Target Compounds						
14) MA Endrin	0.000	5.706	0	14031409	N.D.	1.896 #

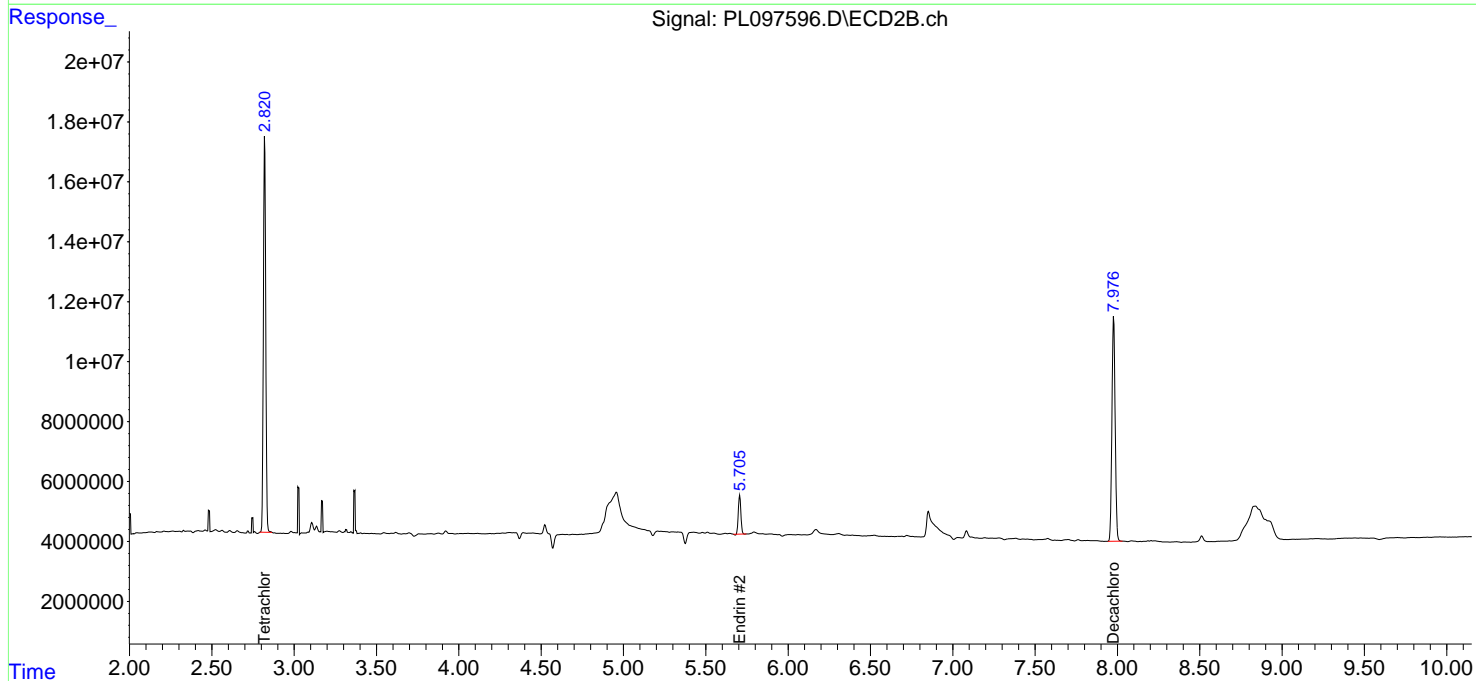
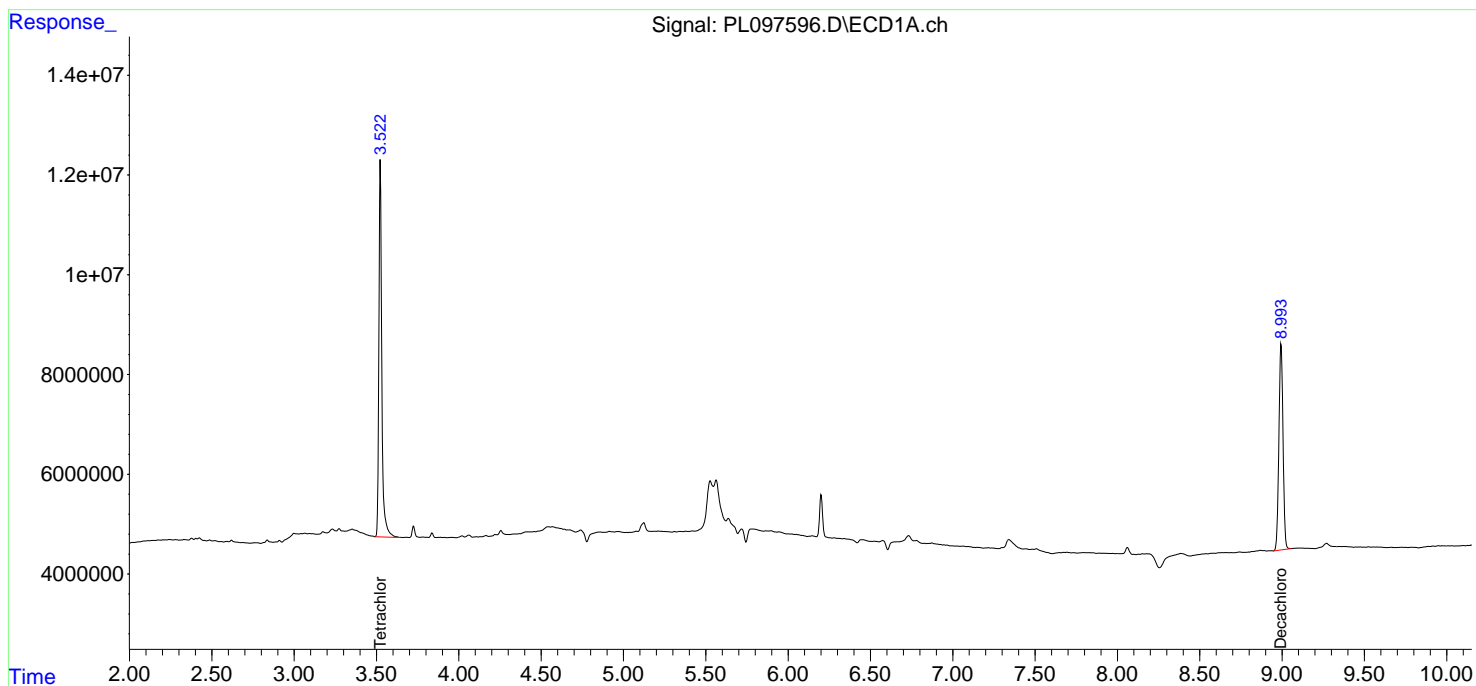
(f)=RT Delta > 1/2 Window (#)=Amounts differ by > 25% (m)=manual int.

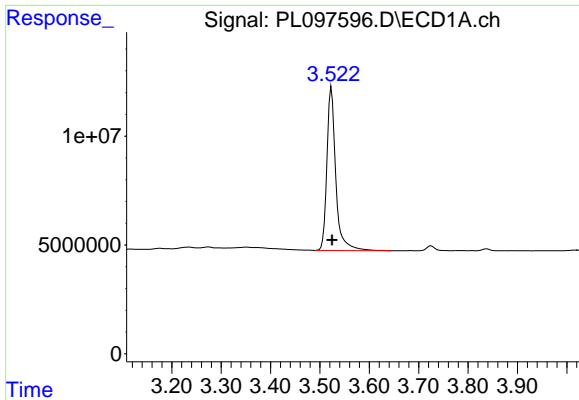
Data Path : Z:\pestpcbsrv\HPCHEM1\ECD_L\Data\PL101025\
 Data File : PL097596.D
 Signal(s) : Signal #1: ECD1A.ch Signal #2: ECD2B.ch
 Acq On : 10 Oct 2025 10:11
 Operator : AR\AJ
 Sample : I.BLK
 Misc :
 ALS Vial : 2 Sample Multiplier: 1

Instrument :
 ECD_L
 ClientSampleId :
 I.BLK

Integration File signal 1: autoint1.e
 Integration File signal 2: autoint2.e
 Quant Time: Oct 11 07:17:35 2025
 Quant Method : Z:\pestpcbsrv\HPCHEM1\ECD_L\methods\PL100725.M
 Quant Title : GC Extractables
 QLast Update : Tue Oct 07 16:47:00 2025
 Response via : Initial Calibration
 Integrator: ChemStation

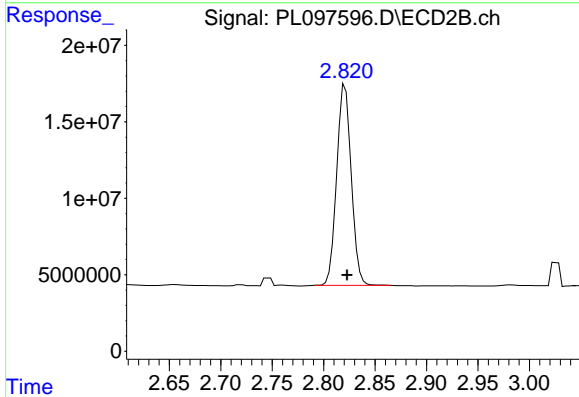
Volume Inj. : 1 µl
 Signal #1 Phase : ZB-MR1 Signal #2 Phase: ZB-MR2
 Signal #1 Info : 30M x 0.32mm x0.5 Signal #2 Info : 30M x 0.32mm x0.25µm



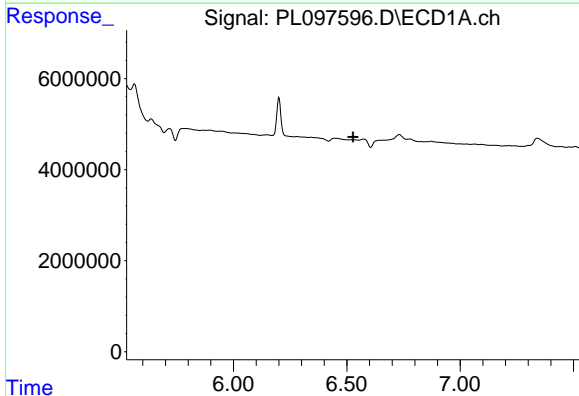


#1 Tetrachloro-m-xylene
 R.T.: 3.523 min
 Delta R.T.: -0.002 min
 Response: 93609946
 Conc: 22.96 ng/ml

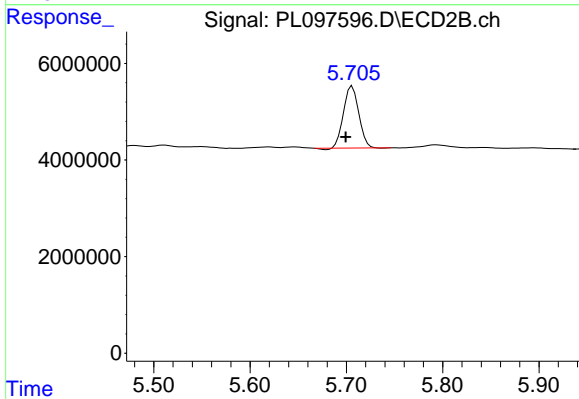
Instrument :
 ECD_L
 ClientSampleId :
 I.BLK



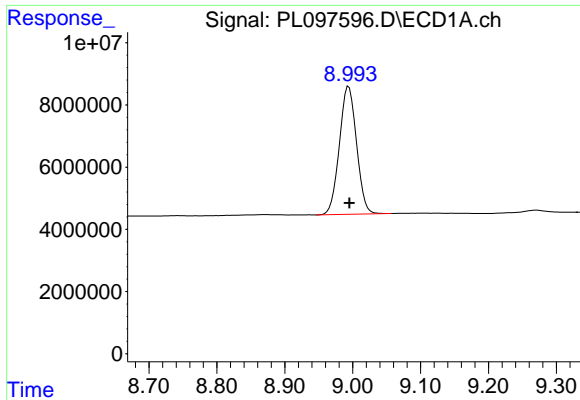
#1 Tetrachloro-m-xylene
 R.T.: 2.821 min
 Delta R.T.: -0.002 min
 Response: 129361711
 Conc: 21.25 ng/ml



#14 Endrin
 R.T.: 0.000 min
 Exp R.T. : 6.528 min
 Response: 0
 Conc: N.D.



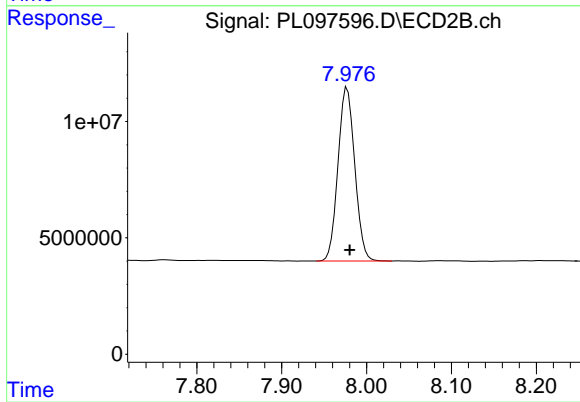
#14 Endrin
 R.T.: 5.706 min
 Delta R.T.: 0.007 min
 Response: 14031409
 Conc: 1.90 ng/ml



#28 Decachlorobiphenyl

R.T.: 8.994 min
Delta R.T.: -0.001 min
Response: 72140120
Conc: 24.26 ng/ml

Instrument :
ECD_L
ClientSampleId :
I.BLK



#28 Decachlorobiphenyl

R.T.: 7.977 min
Delta R.T.: -0.003 min
Response: 102252819
Conc: 19.71 ng/ml