

Data Path : Z:\pestpcbsrv\HPCHEM1\ECD_L\Data\PL101025\
 Data File : PL097599.D
 Signal(s) : Signal #1: ECD1A.ch Signal #2: ECD2B.ch
 Acq On : 10 Oct 2025 13:44
 Operator : AR\AJ
 Sample : PB170054BL
 Misc :
 ALS Vial : 5 Sample Multiplier: 1

Instrument :
 ECD_L
 ClientSampleId :
 PB170054BL

Integration File signal 1: autoint1.e
 Integration File signal 2: autoint2.e
 Quant Time: Oct 11 07:18:21 2025
 Quant Method : Z:\pestpcbsrv\HPCHEM1\ECD_L\methods\PL100725.M
 Quant Title : GC Extractables
 QLast Update : Tue Oct 07 16:47:00 2025
 Response via : Initial Calibration
 Integrator: ChemStation

Volume Inj. : 1 µl
 Signal #1 Phase : ZB-MR1 Signal #2 Phase: ZB-MR2
 Signal #1 Info : 30M x 0.32mm x0.5 Signal #2 Info : 30M x 0.32mm x0.25µm

Compound	RT#1	RT#2	Resp#1	Resp#2	ng/ml	ng/ml

System Monitoring Compounds						
1) SA Tetrachlo...	3.525	2.819	75771760	103.0E6	18.586	16.926
28) SA Decachlor...	8.998	7.979	61337373	88329053	20.627	17.022
Target Compounds						
4) MA Heptachlor	4.875	0.000	16212940	0	2.513	N.D. #
7) B delta-BHC	0.000	4.184	0	12806160	N.D.	1.418 #
14) MA Endrin	0.000	5.706	0	4750455	N.D.	0.642 #

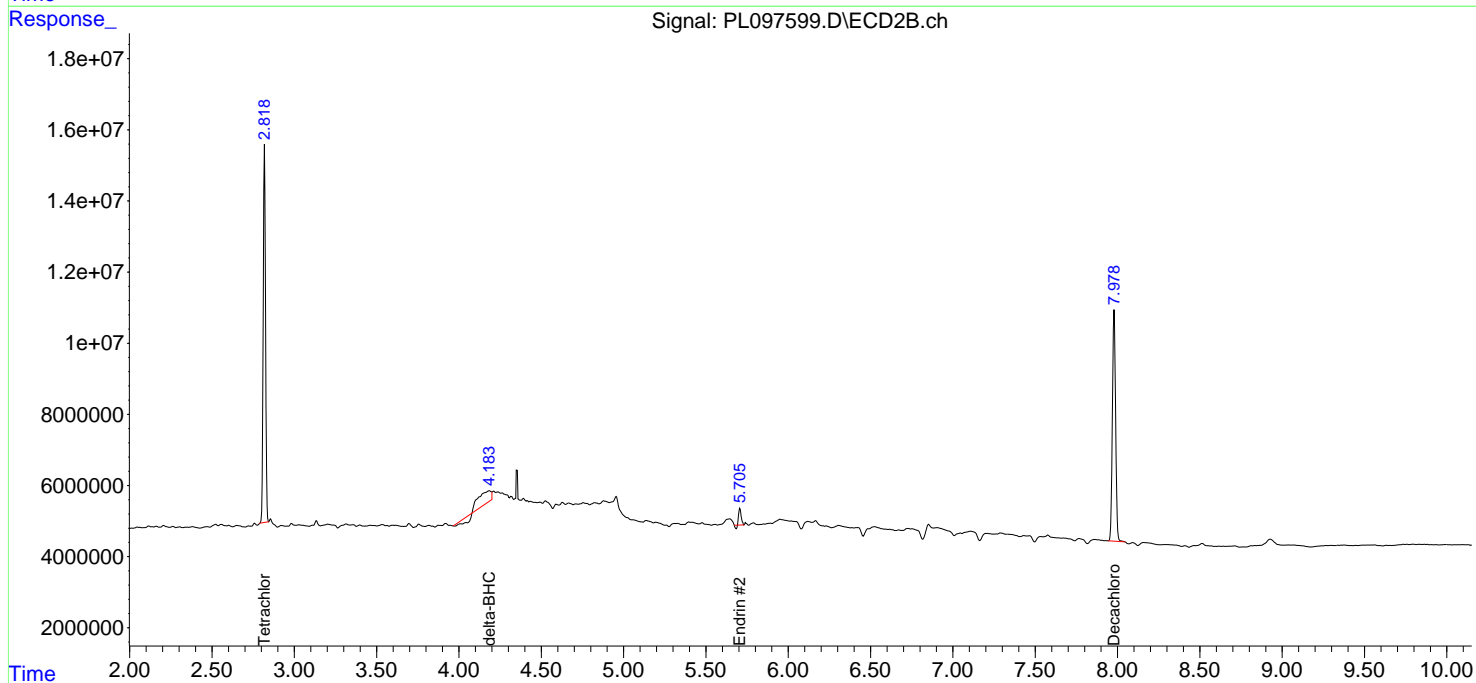
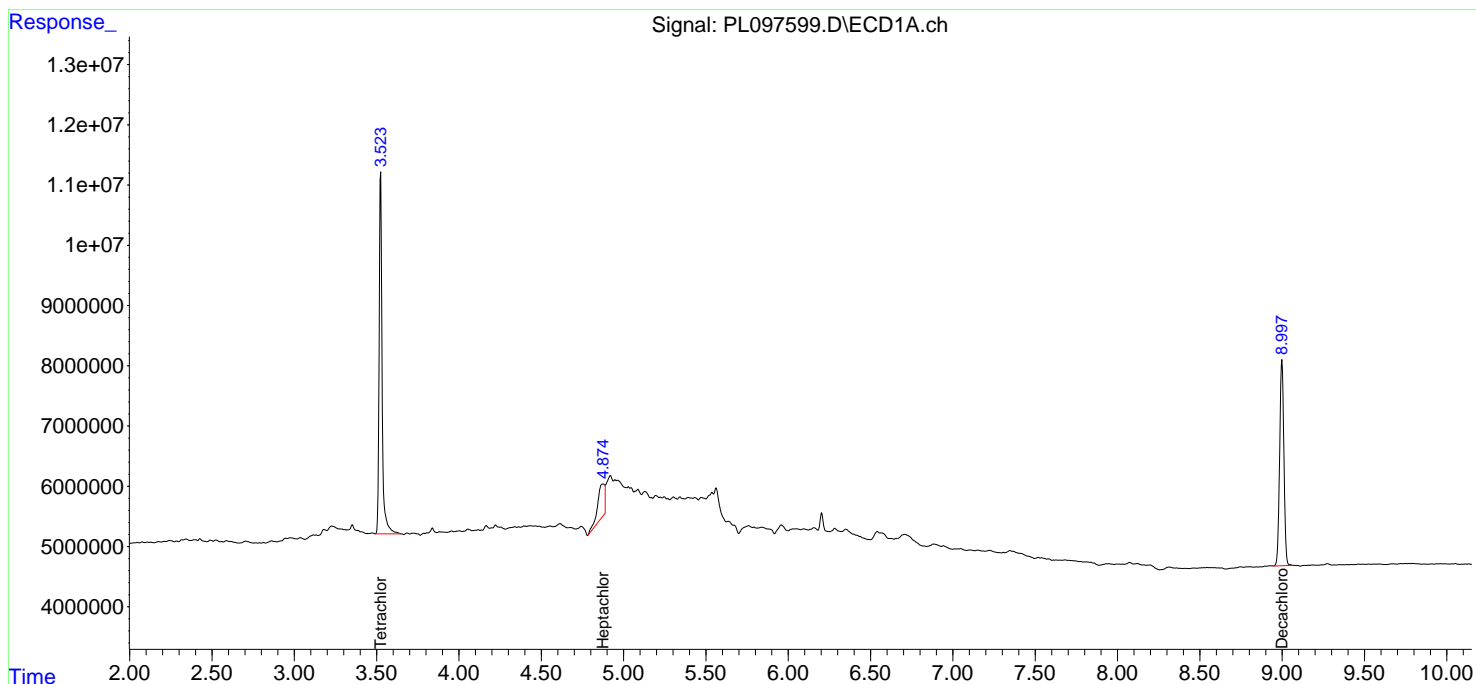
(f)=RT Delta > 1/2 Window (#)=Amounts differ by > 25% (m)=manual int.

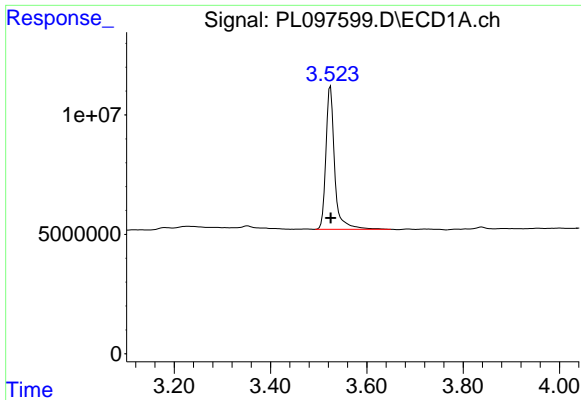
Data Path : Z:\pestpcbsrv\HPCHEM1\ECD_L\Data\PL101025\
 Data File : PL097599.D
 Signal(s) : Signal #1: ECD1A.ch Signal #2: ECD2B.ch
 Acq On : 10 Oct 2025 13:44
 Operator : AR\AJ
 Sample : PB170054BL
 Misc :
 ALS Vial : 5 Sample Multiplier: 1

Instrument :
 ECD_L
 ClientSampleId :
 PB170054BL

Integration File signal 1: autoint1.e
 Integration File signal 2: autoint2.e
 Quant Time: Oct 11 07:18:21 2025
 Quant Method : Z:\pestpcbsrv\HPCHEM1\ECD_L\methods\PL100725.M
 Quant Title : GC Extractables
 QLast Update : Tue Oct 07 16:47:00 2025
 Response via : Initial Calibration
 Integrator: ChemStation

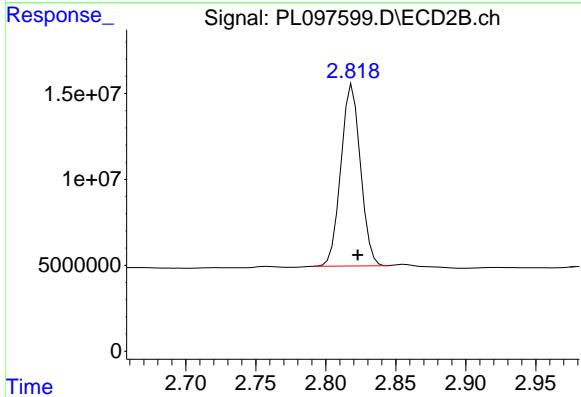
Volume Inj. : 1 µl
 Signal #1 Phase : ZB-MR1 Signal #2 Phase: ZB-MR2
 Signal #1 Info : 30M x 0.32mm x0.5 Signal #2 Info : 30M x 0.32mm x0.25µm



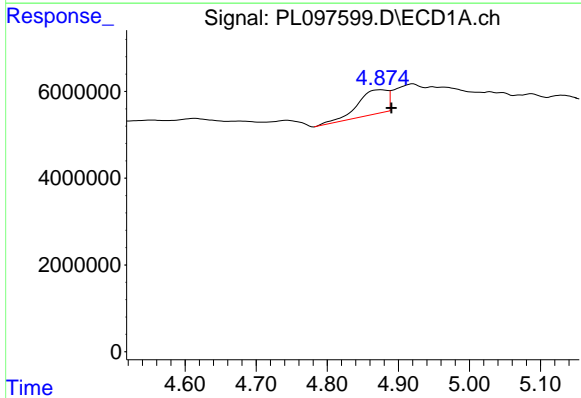


#1 Tetrachloro-m-xylene
 R.T.: 3.525 min
 Delta R.T.: 0.000 min
 Response: 75771760
 Conc: 18.59 ng/ml

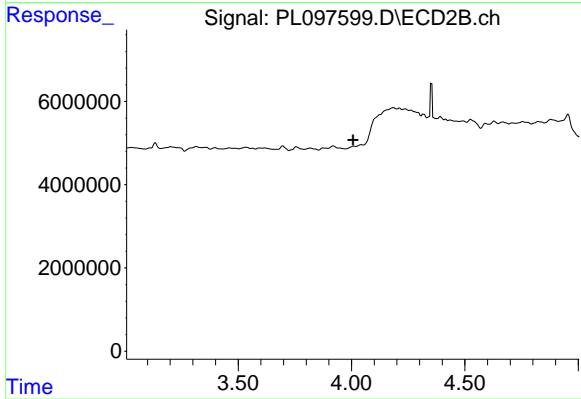
Instrument :
 ECD_L
 ClientSampleId :
 PB170054BL



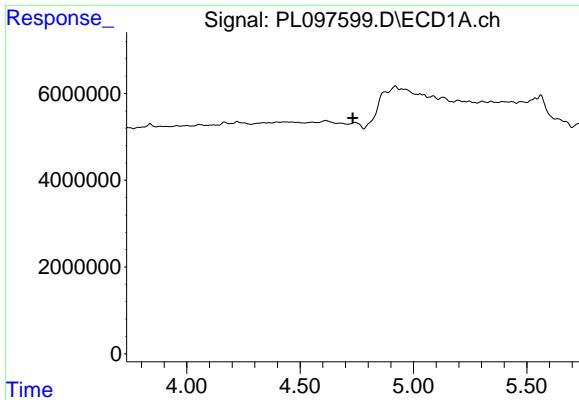
#1 Tetrachloro-m-xylene
 R.T.: 2.819 min
 Delta R.T.: -0.004 min
 Response: 103018719
 Conc: 16.93 ng/ml



#4 Heptachlor
 R.T.: 4.875 min
 Delta R.T.: -0.015 min
 Response: 16212940
 Conc: 2.51 ng/ml



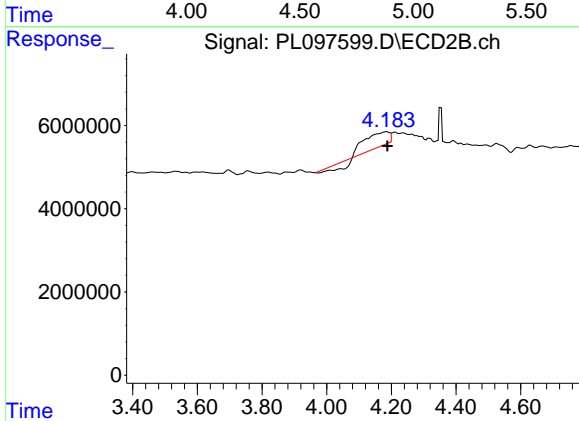
#4 Heptachlor
 R.T.: 0.000 min
 Exp R.T.: 4.007 min
 Response: 0
 Conc: N.D.



#7 delta-BHC

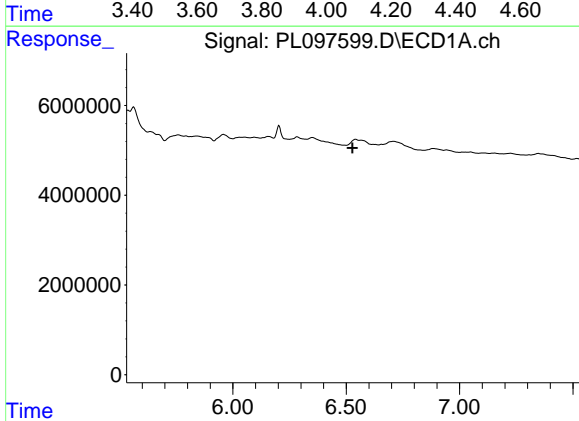
R.T.: 0.000 min
 Exp R.T.: 4.732 min
 Response: 0
 Conc: N.D.

Instrument :
 ECD_L
 ClientSampleId :
 PB170054BL



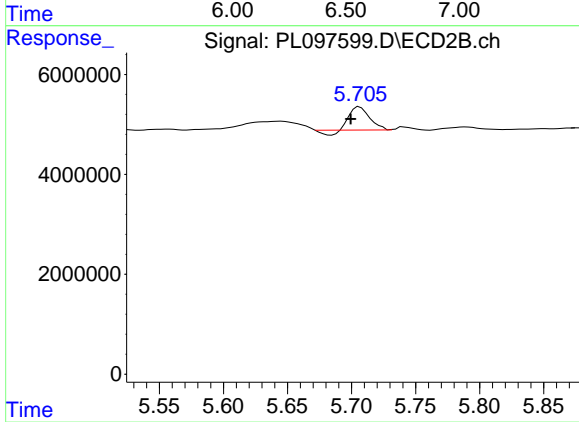
#7 delta-BHC

R.T.: 4.184 min
 Delta R.T.: -0.003 min
 Response: 12806160
 Conc: 1.42 ng/ml



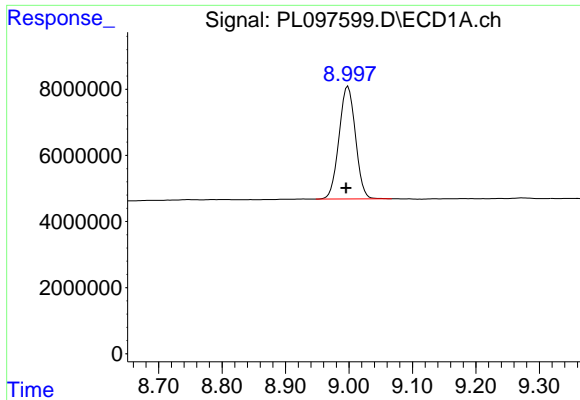
#14 Endrin

R.T.: 0.000 min
 Exp R.T.: 6.528 min
 Response: 0
 Conc: N.D.



#14 Endrin

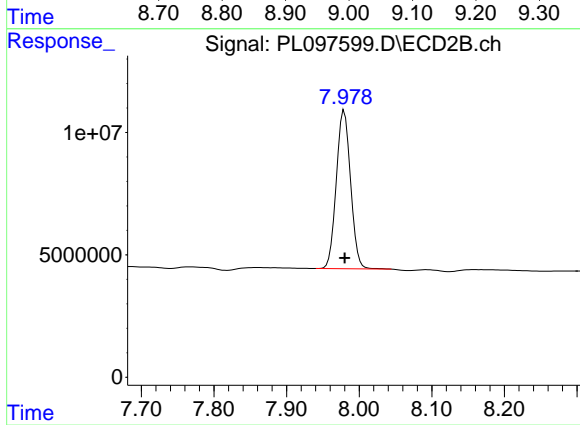
R.T.: 5.706 min
 Delta R.T.: 0.007 min
 Response: 4750455
 Conc: 0.64 ng/ml



#28 Decachlorobiphenyl

R.T.: 8.998 min
Delta R.T.: 0.003 min
Response: 61337373
Conc: 20.63 ng/ml

Instrument :
ECD_L
ClientSampleId :
PB170054BL



#28 Decachlorobiphenyl

R.T.: 7.979 min
Delta R.T.: 0.000 min
Response: 88329053
Conc: 17.02 ng/ml