

Data Path : Z:\pestpcbsrv\HPCHEM1\ECD_L\Data\PL101325\
 Data File : PL097616.D
 Signal(s) : Signal #1: ECD1A.ch Signal #2: ECD2B.ch
 Acq On : 13 Oct 2025 13:39
 Operator : AR\AJ
 Sample : PB170065BS
 Misc :
 ALS Vial : 6 Sample Multiplier: 1

Instrument :
 ECD_L
 ClientSampleId :
 PB170065BS

Integration File signal 1: autoint1.e
 Integration File signal 2: autoint2.e
 Quant Time: Oct 14 02:23:26 2025
 Quant Method : Z:\pestpcbsrv\HPCHEM1\ECD_L\methods\PL100725.M
 Quant Title : GC Extractables
 QLast Update : Tue Oct 07 16:47:00 2025
 Response via : Initial Calibration
 Integrator: ChemStation

Volume Inj. : 1 µl
 Signal #1 Phase : ZB-MR2 Signal #2 Phase: ZB-MR2
 Signal #1 Info : 30M x 0.32mm x0.5 Signal #2 Info : 30M x 0.32mm x0.25µm

Compound	RT#1	RT#2	Resp#1	Resp#2	ng/ml	ng/ml
System Monitoring Compounds						
1) SA Tetrachlo...	3.525	2.820	68370260	100.8E6	16.771	16.562
28) SA Decachlor...	9.002	7.982	98242323	148.4E6	33.038	28.594
Target Compounds						
2) A alpha-BHC	3.971	3.324	381.3E6	540.8E6	56.526	54.805
3) MA gamma-BHC...	4.299	3.656	356.6E6	496.2E6	56.095	54.008
4) MA Heptachlor	4.890	4.004	351.1E6	468.7E6	54.421	50.991
5) MB Aldrin	5.229	4.286	335.8E6	476.4E6	55.845	54.931
6) B beta-BHC	4.487	3.952	146.3E6	206.7E6	56.580	51.967
7) B delta-BHC	4.733	4.185	340.9E6	494.9E6	56.137	54.787
8) B Heptachlo...	5.650	4.788	302.8E6	417.5E6	52.002	52.859
9) A Endosulfan I	6.032	5.159	280.3E6	388.3E6	56.380	52.660
10) B gamma-Chl...	5.904	5.040	305.4E6	440.9E6	56.267	50.716
11) B alpha-Chl...	5.984	5.104	302.7E6	429.0E6	55.786	51.519
12) B 4,4'-DDE	6.155	5.293	269.1E6	406.8E6	57.789	53.586
13) MA Dieldrin	6.304	5.424	297.4E6	425.8E6	56.541	51.503
14) MA Endrin	6.531	5.698	228.7E6	345.9E6	51.121	46.736
15) B Endosulfa...	6.745	5.991	252.8E6	378.2E6	51.669	54.773
16) A 4,4'-DDD	6.665	5.846	237.7E6	342.7E6	62.991	53.727
17) MA 4,4'-DDT	6.979	6.099	198.8E6	307.0E6	49.035	46.073
18) B Endrin al...	6.873	6.169	186.5E6	275.6E6	56.918	47.858
19) B Endosulfa...	7.107	6.393	220.5E6	341.7E6	54.993	51.322
20) A Methoxychlor	7.451	6.671	95880380	156.6E6	45.898	42.961
21) B Endrin ke...	7.586	6.897	246.6E6	395.3E6	57.601	50.033
22) Mirex	8.064	7.087	161.1E6	263.6E6	51.852	49.282
24) Chlordane-2	5.229f	0.000	335.8E6	0	1487.584	N.D. #
25) Chlordane-3	5.904	5.040	305.4E6	440.9E6	373.472	481.257 #
26) Chlordane-4	5.984	5.104	302.7E6	429.0E6	295.126	555.724 #
27) Chlordane-5	0.000	5.991	0	378.2E6	N.D.	1277.206 #

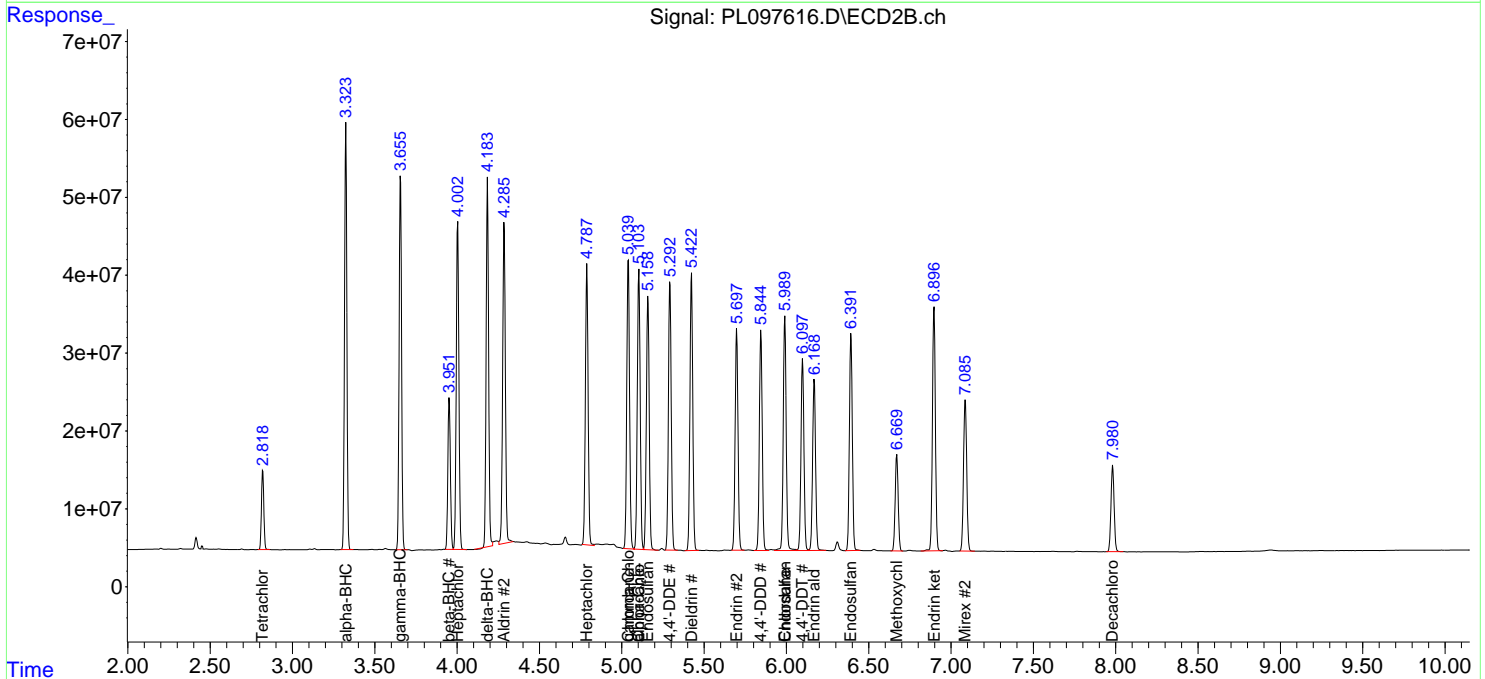
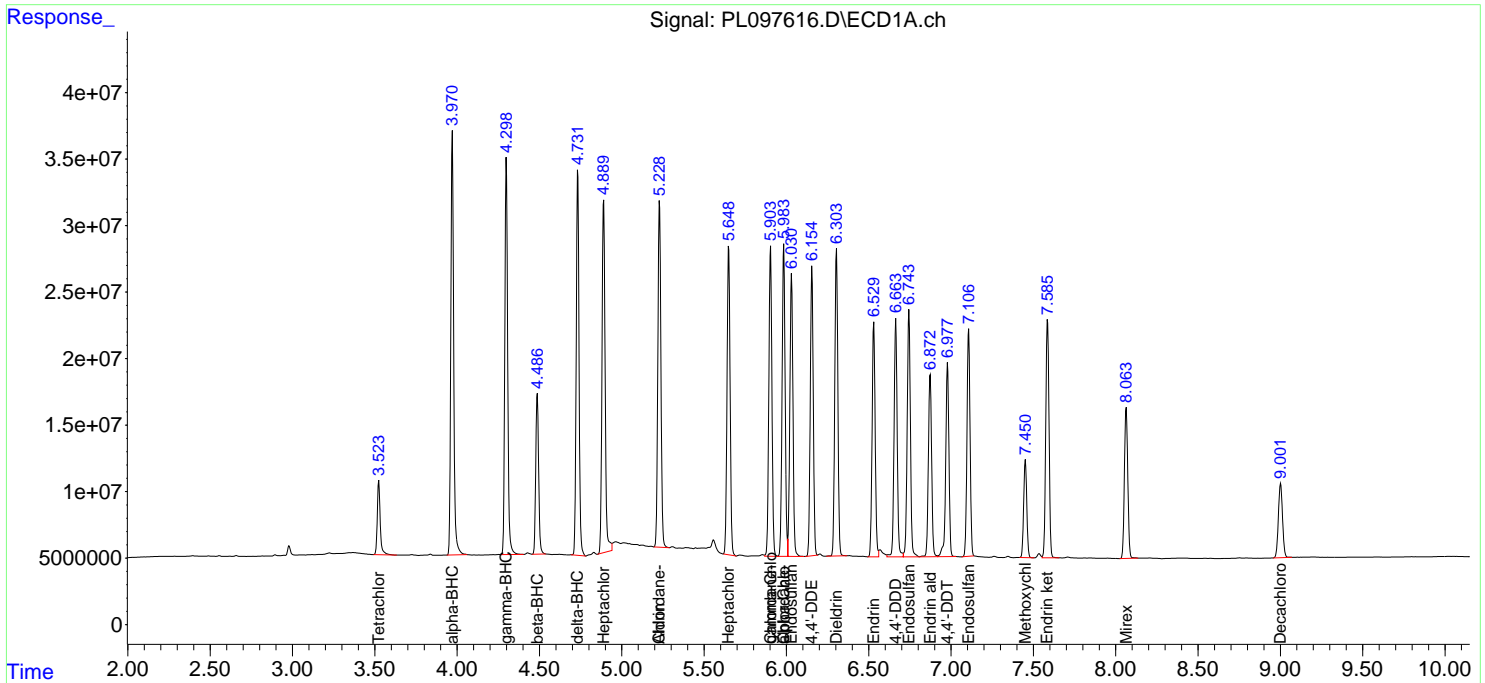
(f)=RT Delta > 1/2 Window (#)=Amounts differ by > 25% (m)=manual int.

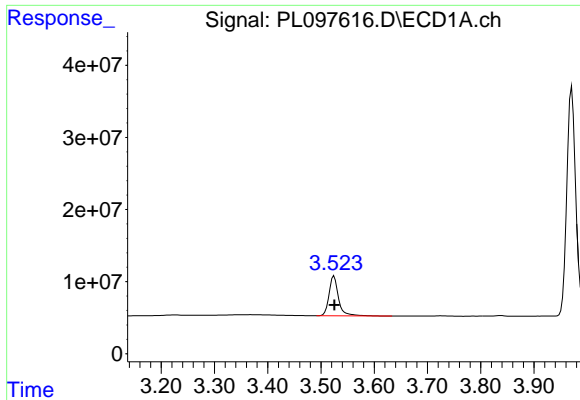
Data Path : Z:\pestpcbsrv\HPCHEM1\ECD_L\Data\PL101325\
 Data File : PL097616.D
 Signal(s) : Signal #1: ECD1A.ch Signal #2: ECD2B.ch
 Acq On : 13 Oct 2025 13:39
 Operator : AR\AJ
 Sample : PB170065BS
 Misc :
 ALS Vial : 6 Sample Multiplier: 1

Instrument :
 ECD_L
 ClientSampleId :
 PB170065BS

Integration File signal 1: autoint1.e
 Integration File signal 2: autoint2.e
 Quant Time: Oct 14 02:23:26 2025
 Quant Method : Z:\pestpcbsrv\HPCHEM1\ECD_L\methods\PL100725.M
 Quant Title : GC Extractables
 QLast Update : Tue Oct 07 16:47:00 2025
 Response via : Initial Calibration
 Integrator: ChemStation

Volume Inj. : 1 µl
 Signal #1 Phase : ZB-MR1 Signal #2 Phase: ZB-MR2
 Signal #1 Info : 30M x 0.32mm x0.5 Signal #2 Info : 30M x 0.32mm x0.25µm

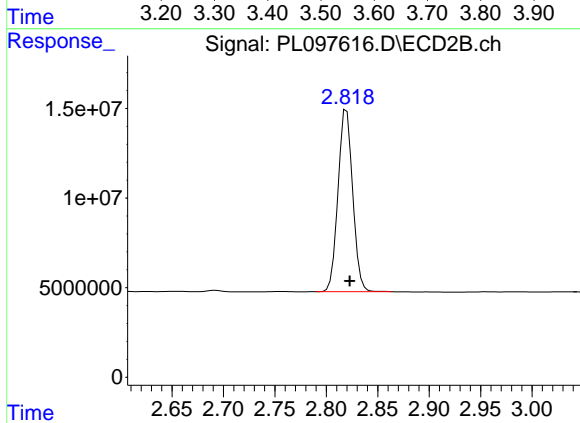




#1 Tetrachloro-m-xylene

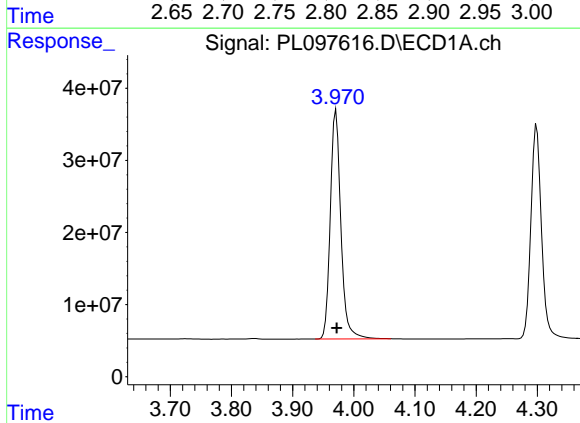
R.T.: 3.525 min
 Delta R.T.: 0.000 min
 Response: 68370260
 Conc: 16.77 ng/ml

Instrument :
 ECD_L
 ClientSampleId :
 PB170065BS



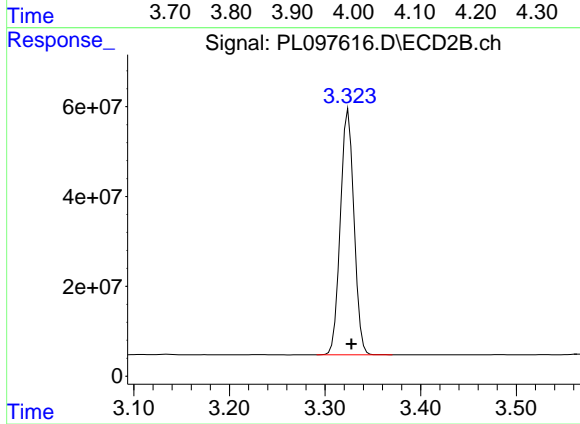
#1 Tetrachloro-m-xylene

R.T.: 2.820 min
 Delta R.T.: -0.003 min
 Response: 100800432
 Conc: 16.56 ng/ml



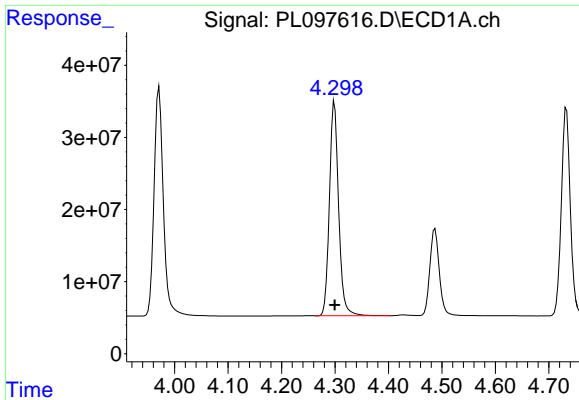
#2 alpha-BHC

R.T.: 3.971 min
 Delta R.T.: 0.000 min
 Response: 381308656
 Conc: 56.53 ng/ml



#2 alpha-BHC

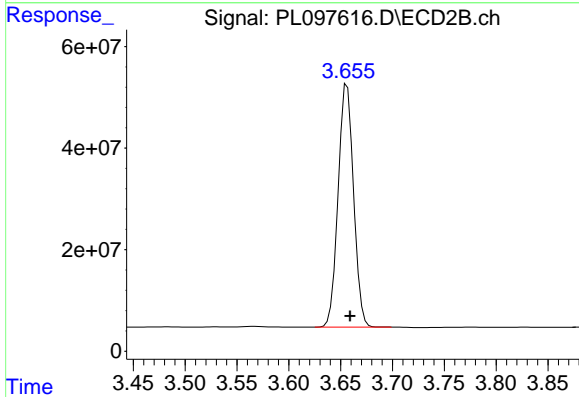
R.T.: 3.324 min
 Delta R.T.: -0.003 min
 Response: 540756281
 Conc: 54.80 ng/ml



#3 gamma-BHC (Lindane)

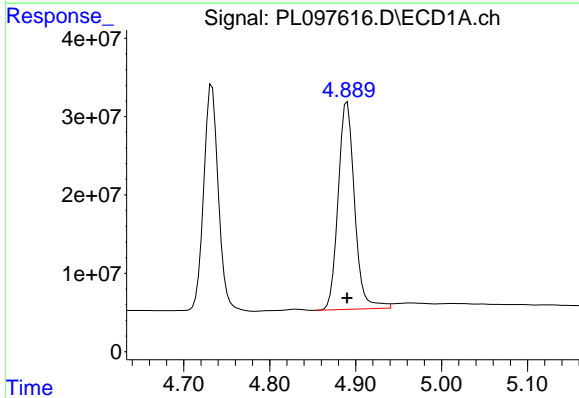
R.T.: 4.299 min
 Delta R.T.: 0.000 min
 Response: 356558304
 Conc: 56.10 ng/ml

Instrument :
 ECD_L
 ClientSampleId :
 PB170065BS



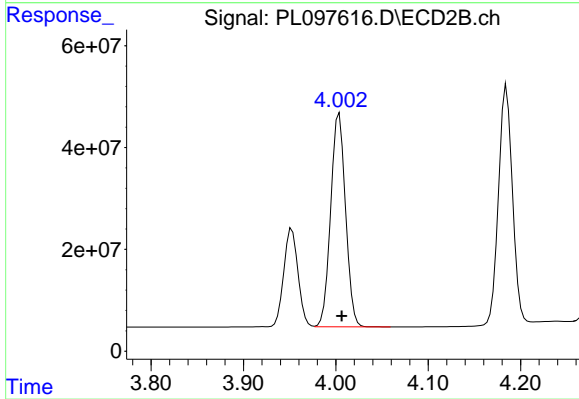
#3 gamma-BHC (Lindane)

R.T.: 3.656 min
 Delta R.T.: -0.003 min
 Response: 496183322
 Conc: 54.01 ng/ml



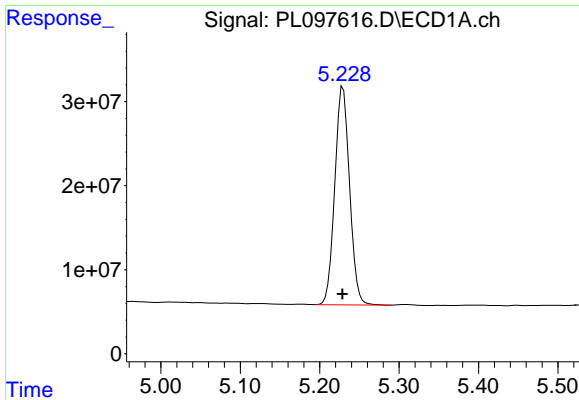
#4 Heptachlor

R.T.: 4.890 min
 Delta R.T.: 0.000 min
 Response: 351051331
 Conc: 54.42 ng/ml



#4 Heptachlor

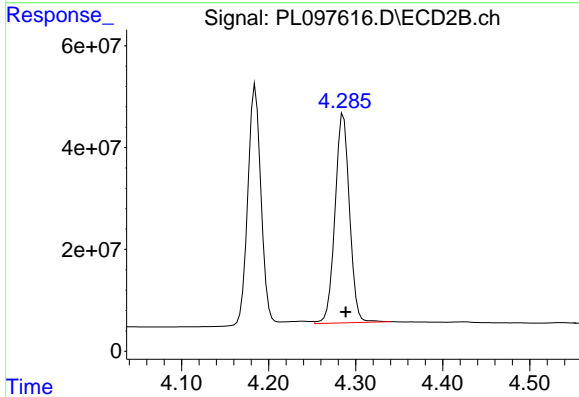
R.T.: 4.004 min
 Delta R.T.: -0.003 min
 Response: 468717473
 Conc: 50.99 ng/ml



#5 Aldrin

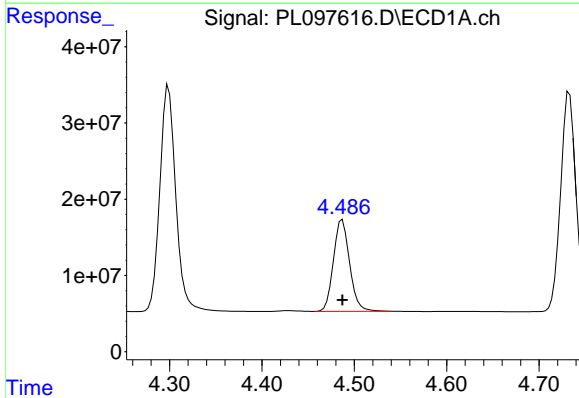
R.T.: 5.229 min
 Delta R.T.: 0.000 min
 Response: 335779165
 Conc: 55.85 ng/ml

Instrument :
 ECD_L
 ClientSampleId :
 PB170065BS



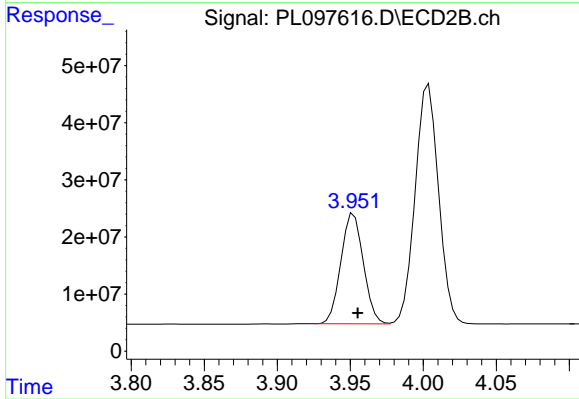
#5 Aldrin

R.T.: 4.286 min
 Delta R.T.: -0.003 min
 Response: 476356044
 Conc: 54.93 ng/ml



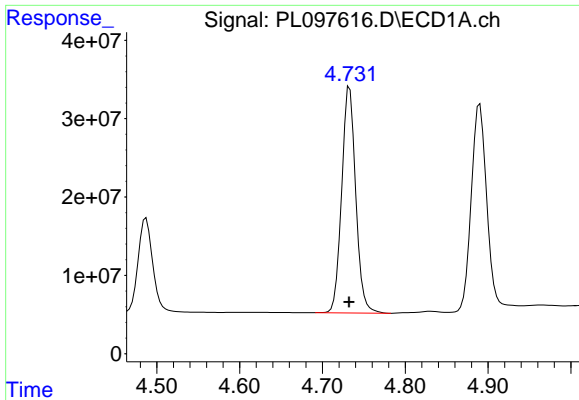
#6 beta-BHC

R.T.: 4.487 min
 Delta R.T.: 0.000 min
 Response: 146284997
 Conc: 56.58 ng/ml



#6 beta-BHC

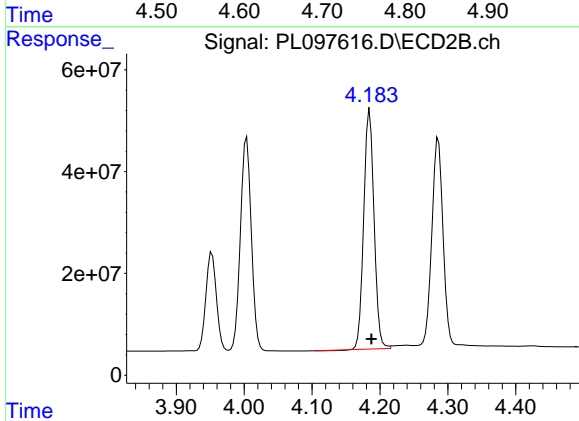
R.T.: 3.952 min
 Delta R.T.: -0.003 min
 Response: 206731346
 Conc: 51.97 ng/ml



#7 delta-BHC

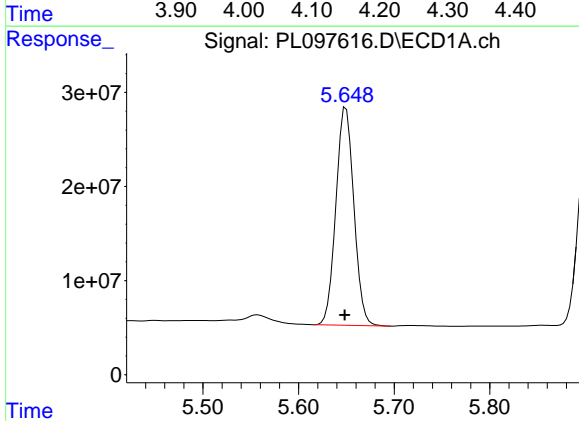
R.T.: 4.733 min
Delta R.T.: 0.000 min
Response: 340898568
Conc: 56.14 ng/ml

Instrument :
ECD_L
ClientSampleId :
PB170065BS



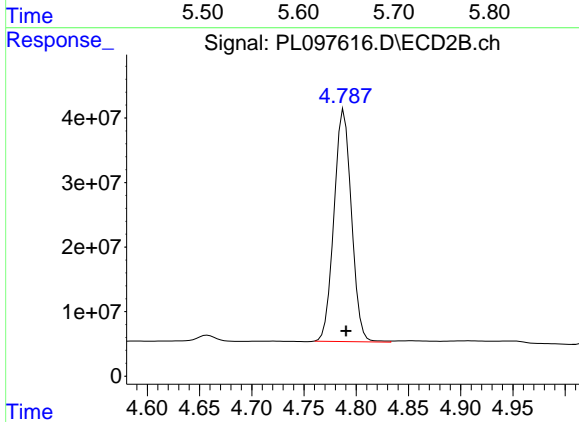
#7 delta-BHC

R.T.: 4.185 min
Delta R.T.: -0.003 min
Response: 494940997
Conc: 54.79 ng/ml



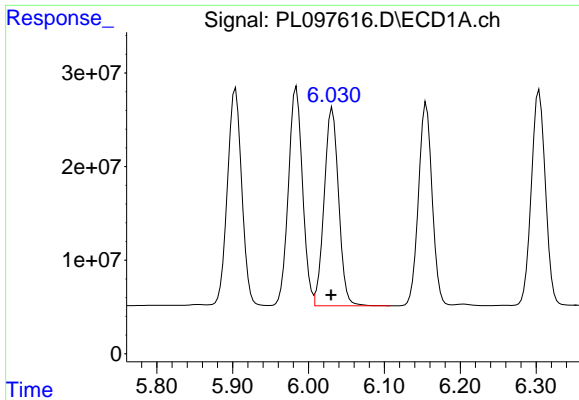
#8 Heptachlor epoxide

R.T.: 5.650 min
Delta R.T.: 0.001 min
Response: 302767406
Conc: 52.00 ng/ml



#8 Heptachlor epoxide

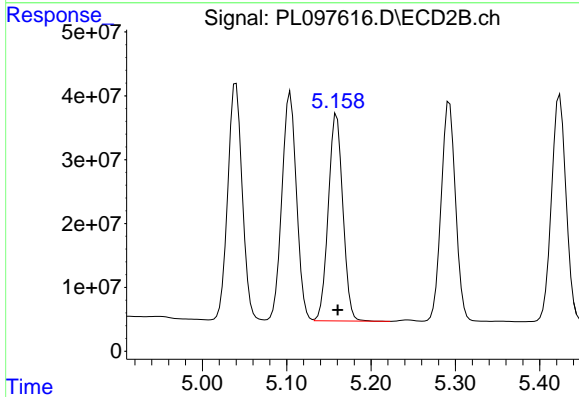
R.T.: 4.788 min
Delta R.T.: -0.002 min
Response: 417479126
Conc: 52.86 ng/ml



#9 Endosulfan I

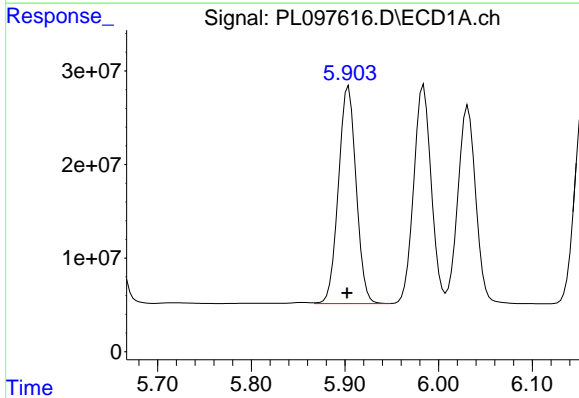
R.T.: 6.032 min
 Delta R.T.: 0.002 min
 Response: 280290277
 Conc: 56.38 ng/ml

Instrument :
 ECD_L
 ClientSampleId :
 PB170065BS



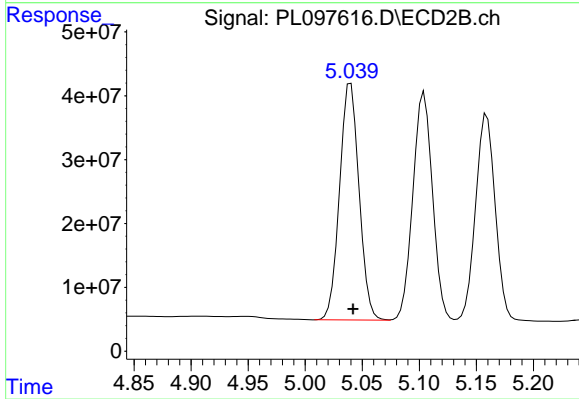
#9 Endosulfan I

R.T.: 5.159 min
 Delta R.T.: -0.001 min
 Response: 388330309
 Conc: 52.66 ng/ml



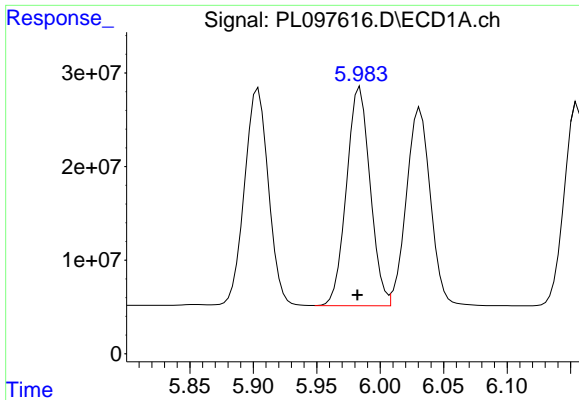
#10 gamma-Chlordane

R.T.: 5.904 min
 Delta R.T.: 0.002 min
 Response: 305384641
 Conc: 56.27 ng/ml



#10 gamma-Chlordane

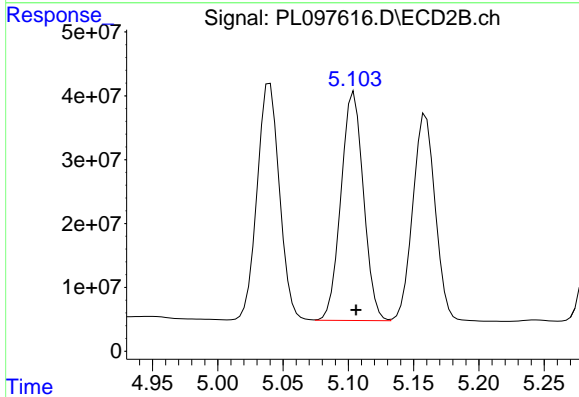
R.T.: 5.040 min
 Delta R.T.: -0.002 min
 Response: 440879705
 Conc: 50.72 ng/ml



#11 alpha-Chlordane

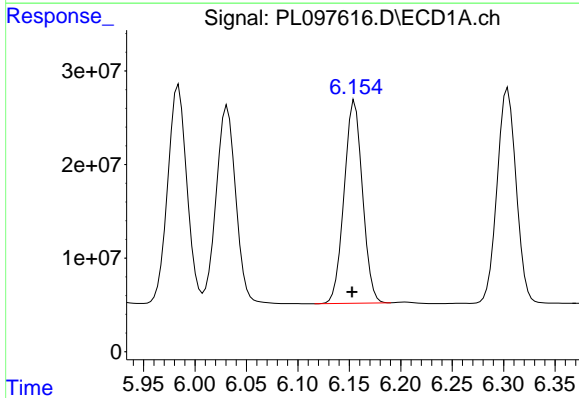
R.T.: 5.984 min
 Delta R.T.: 0.002 min
 Response: 302719805
 Conc: 55.79 ng/ml

Instrument :
 ECD_L
 ClientSampleId :
 PB170065BS



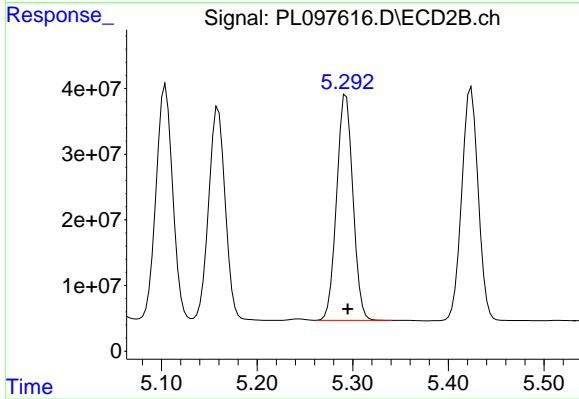
#11 alpha-Chlordane

R.T.: 5.104 min
 Delta R.T.: -0.002 min
 Response: 429009198
 Conc: 51.52 ng/ml



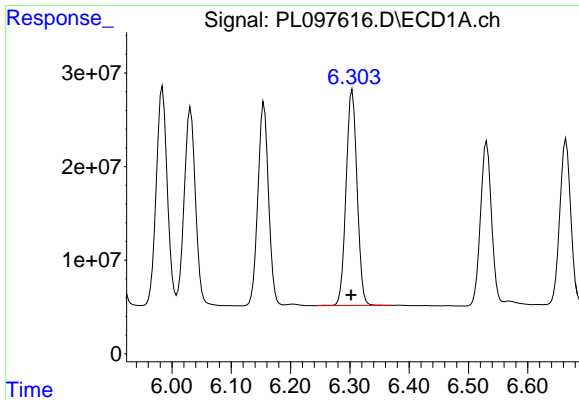
#12 4,4'-DDE

R.T.: 6.155 min
 Delta R.T.: 0.003 min
 Response: 269133770
 Conc: 57.79 ng/ml



#12 4,4'-DDE

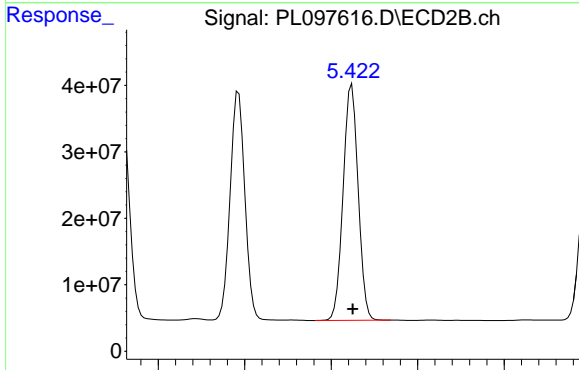
R.T.: 5.293 min
 Delta R.T.: -0.002 min
 Response: 406846749
 Conc: 53.59 ng/ml



#13 Dieldrin

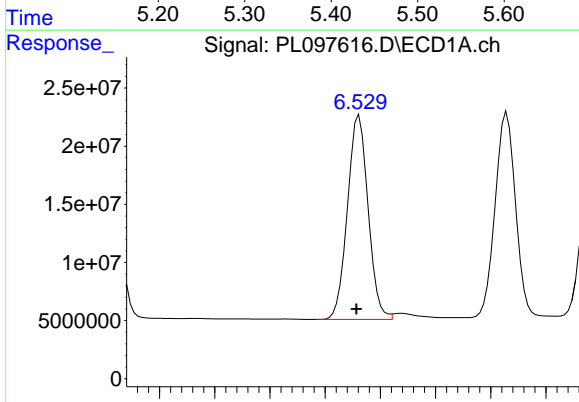
R.T.: 6.304 min
 Delta R.T.: 0.002 min
 Response: 297430760
 Conc: 56.54 ng/ml

Instrument :
 ECD_L
 ClientSampleId :
 PB170065BS



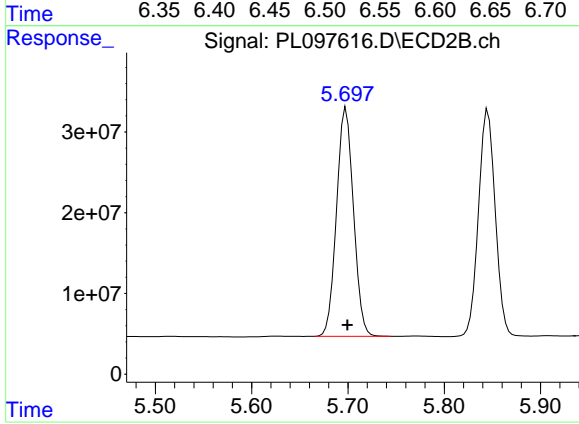
#13 Dieldrin

R.T.: 5.424 min
 Delta R.T.: -0.001 min
 Response: 425844027
 Conc: 51.50 ng/ml



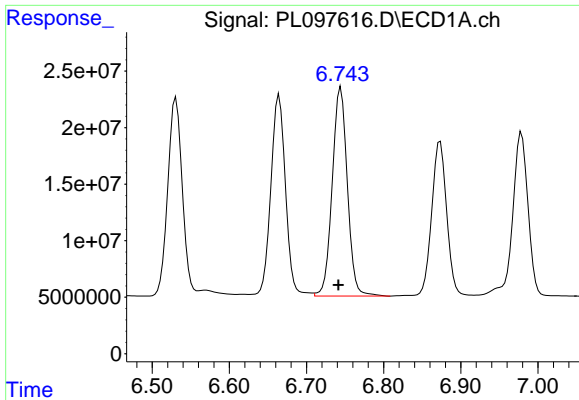
#14 Endrin

R.T.: 6.531 min
 Delta R.T.: 0.002 min
 Response: 228732478
 Conc: 51.12 ng/ml



#14 Endrin

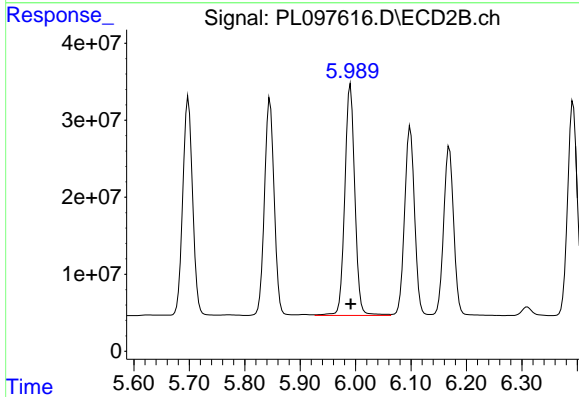
R.T.: 5.698 min
 Delta R.T.: -0.001 min
 Response: 345914935
 Conc: 46.74 ng/ml



#15 Endosulfan II

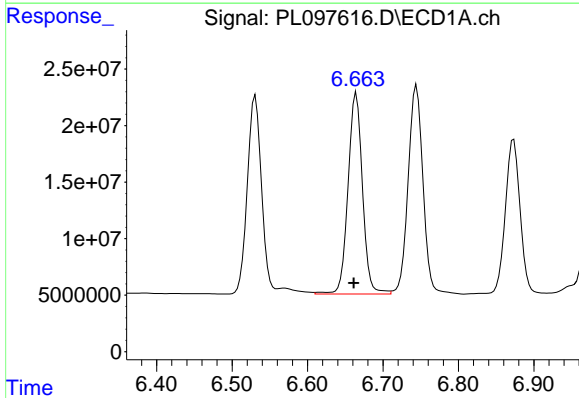
R.T.: 6.745 min
 Delta R.T.: 0.003 min
 Response: 252769210
 Conc: 51.67 ng/ml

Instrument :
 ECD_L
 ClientSampleId :
 PB170065BS



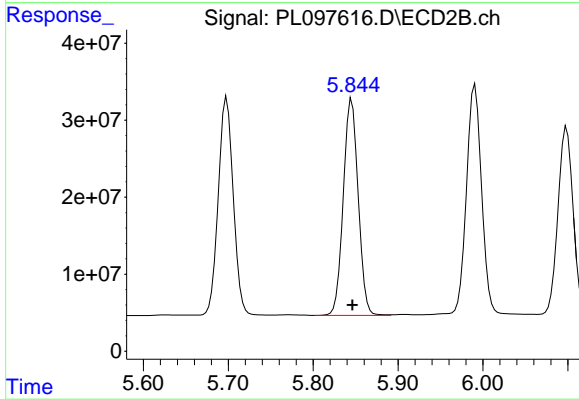
#15 Endosulfan II

R.T.: 5.991 min
 Delta R.T.: 0.000 min
 Response: 378204610
 Conc: 54.77 ng/ml



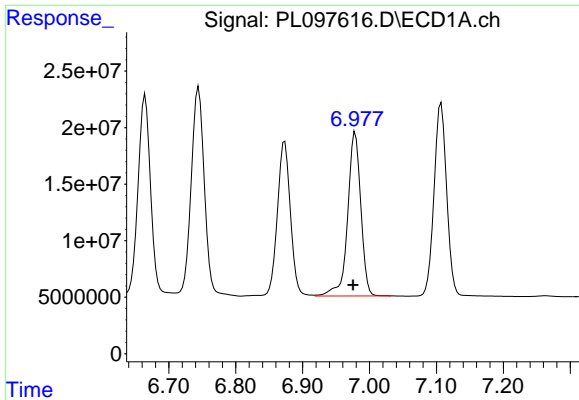
#16 4,4'-DDD

R.T.: 6.665 min
 Delta R.T.: 0.003 min
 Response: 237697287
 Conc: 62.99 ng/ml



#16 4,4'-DDD

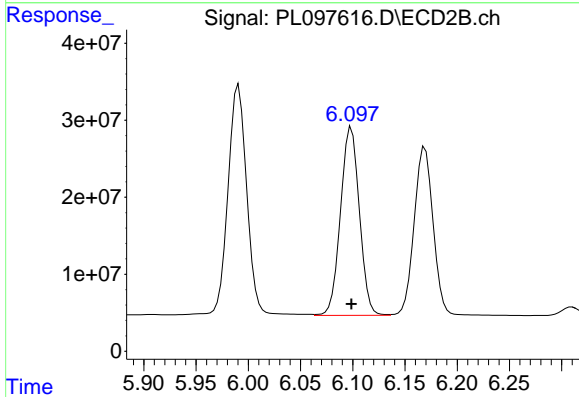
R.T.: 5.846 min
 Delta R.T.: 0.000 min
 Response: 342715903
 Conc: 53.73 ng/ml



#17 4,4'-DDT

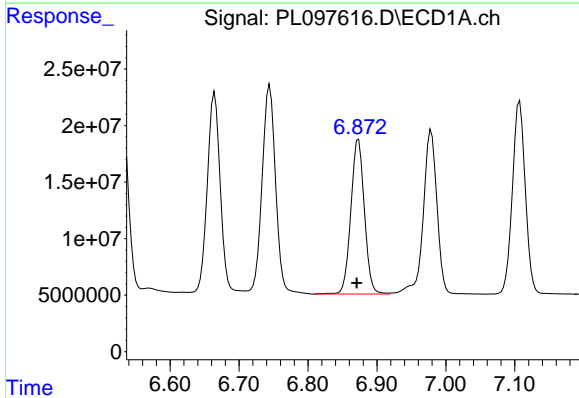
R.T.: 6.979 min
 Delta R.T.: 0.004 min
 Response: 198821767
 Conc: 49.03 ng/ml

Instrument :
 ECD_L
 ClientSampleId :
 PB170065BS



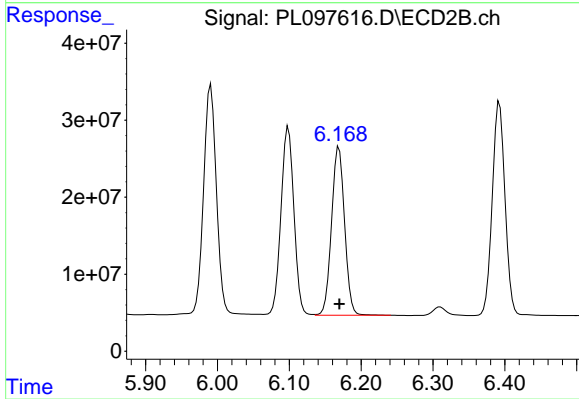
#17 4,4'-DDT

R.T.: 6.099 min
 Delta R.T.: 0.000 min
 Response: 307003642
 Conc: 46.07 ng/ml



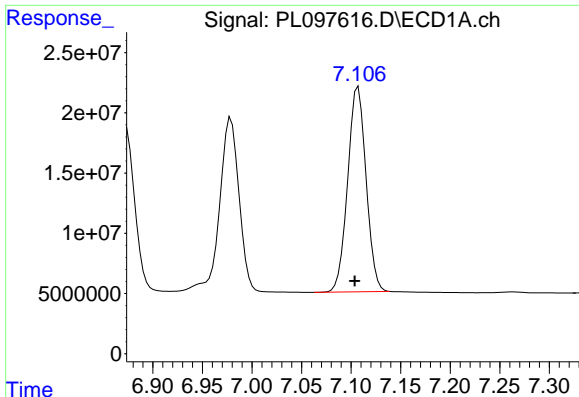
#18 Endrin aldehyde

R.T.: 6.873 min
 Delta R.T.: 0.003 min
 Response: 186503485
 Conc: 56.92 ng/ml



#18 Endrin aldehyde

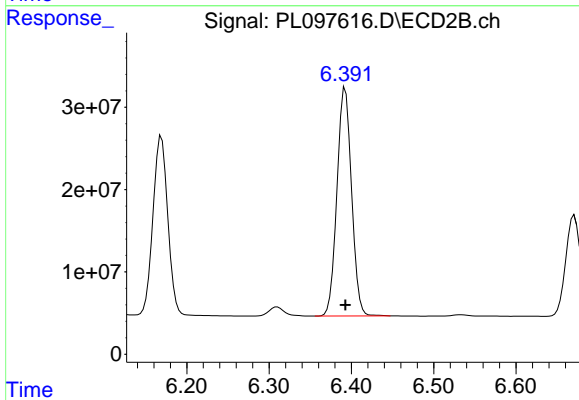
R.T.: 6.169 min
 Delta R.T.: 0.000 min
 Response: 275589149
 Conc: 47.86 ng/ml



#19 Endosulfan Sulfate

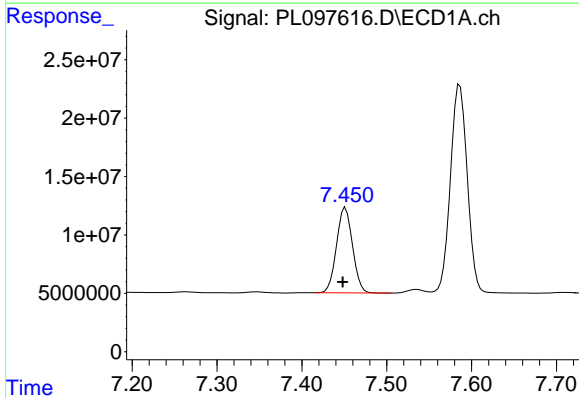
R.T.: 7.107 min
 Delta R.T.: 0.003 min
 Response: 220516774
 Conc: 54.99 ng/ml

Instrument :
 ECD_L
 ClientSampleId :
 PB170065BS



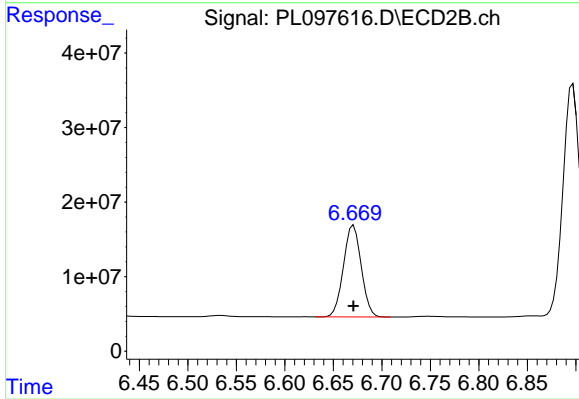
#19 Endosulfan Sulfate

R.T.: 6.393 min
 Delta R.T.: 0.000 min
 Response: 341696533
 Conc: 51.32 ng/ml



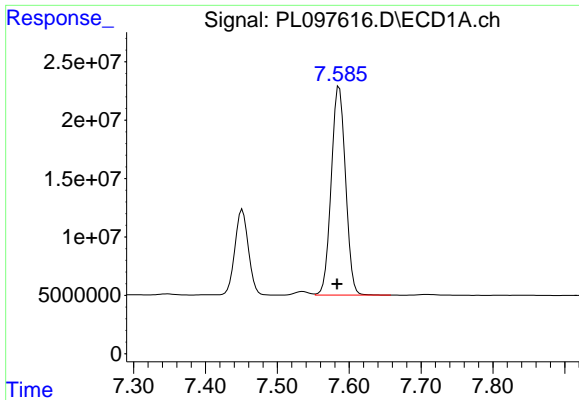
#20 Methoxychlor

R.T.: 7.451 min
 Delta R.T.: 0.003 min
 Response: 95880380
 Conc: 45.90 ng/ml



#20 Methoxychlor

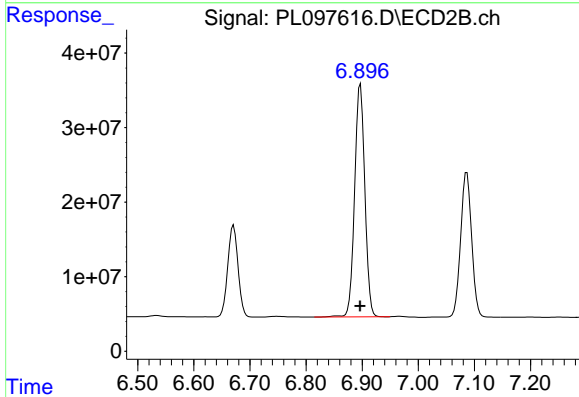
R.T.: 6.671 min
 Delta R.T.: 0.000 min
 Response: 156602798
 Conc: 42.96 ng/ml



#21 Endrin ketone

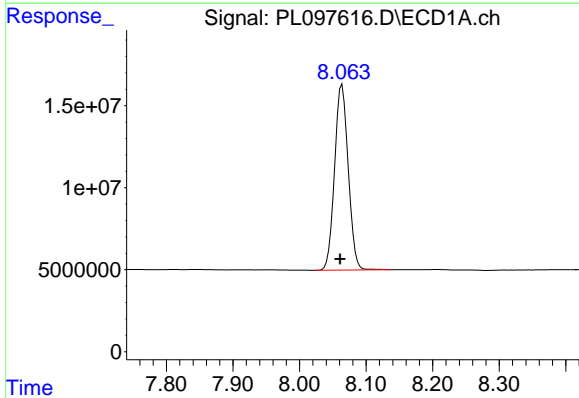
R.T.: 7.586 min
 Delta R.T.: 0.003 min
 Response: 246631979
 Conc: 57.60 ng/ml

Instrument :
 ECD_L
 ClientSampleId :
 PB170065BS



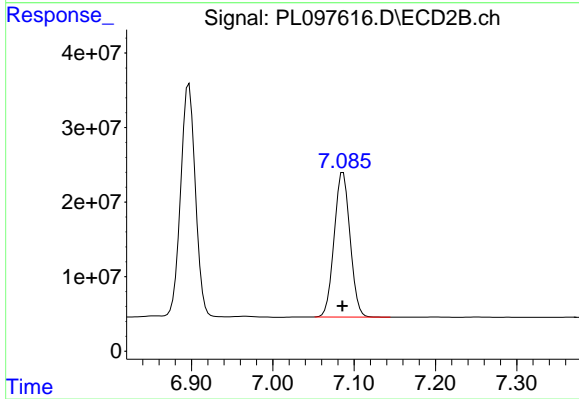
#21 Endrin ketone

R.T.: 6.897 min
 Delta R.T.: 0.000 min
 Response: 395250858
 Conc: 50.03 ng/ml



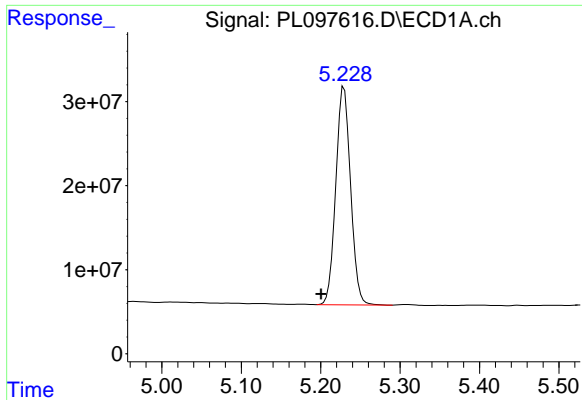
#22 Mirex

R.T.: 8.064 min
 Delta R.T.: 0.003 min
 Response: 161128445
 Conc: 51.85 ng/ml



#22 Mirex

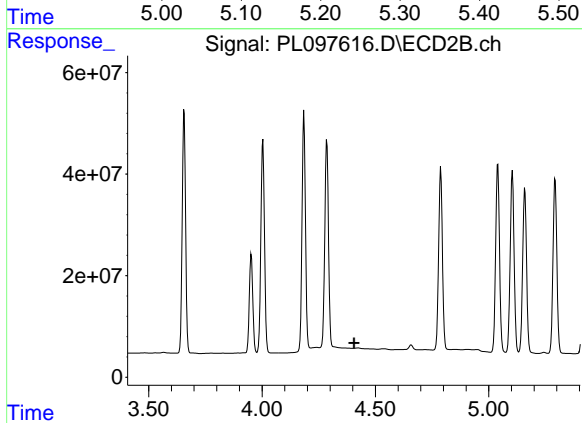
R.T.: 7.087 min
 Delta R.T.: 0.000 min
 Response: 263649785
 Conc: 49.28 ng/ml



#24 Chlordane-2

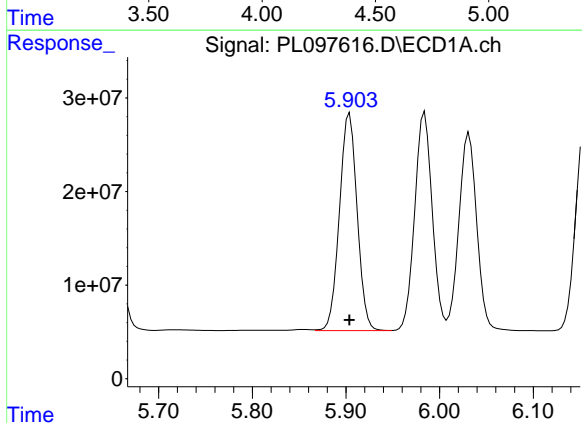
R.T.: 5.229 min
 Delta R.T.: 0.029 min
 Response: 335779165
 Conc: 1487.58 ng/m

Instrument :
 ECD_L
 ClientSampleId :
 PB170065BS



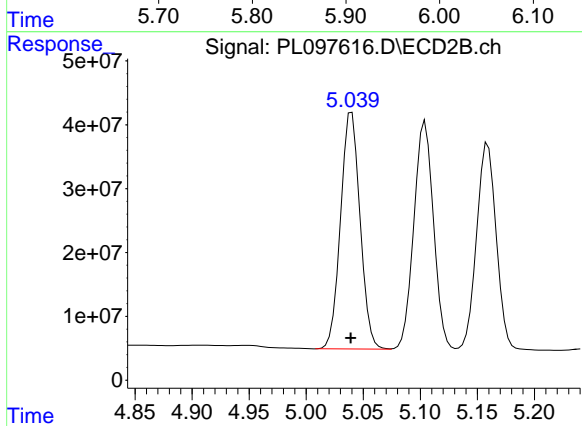
#24 Chlordane-2

R.T.: 0.000 min
 Exp R.T. : 4.406 min
 Response: 0
 Conc: N.D.



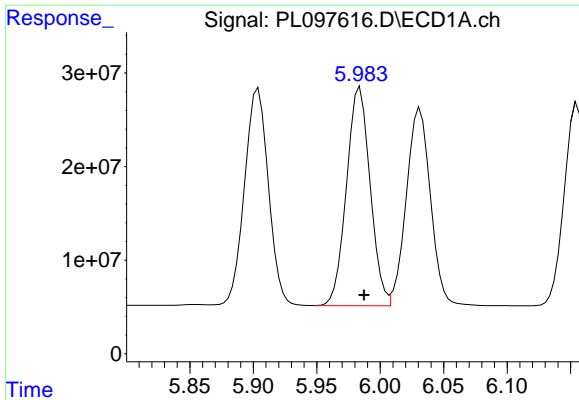
#25 Chlordane-3

R.T.: 5.904 min
 Delta R.T.: 0.000 min
 Response: 305384641
 Conc: 373.47 ng/ml



#25 Chlordane-3

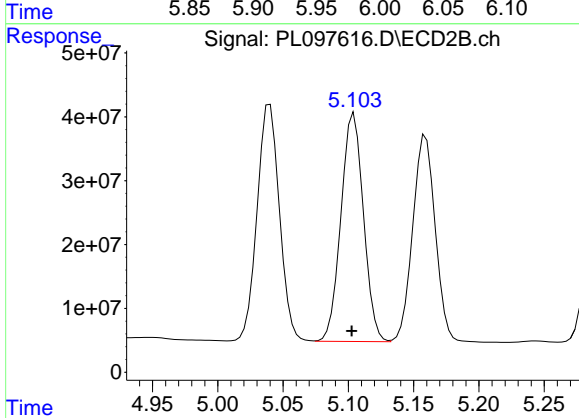
R.T.: 5.040 min
 Delta R.T.: 0.000 min
 Response: 440879705
 Conc: 481.26 ng/ml



#26 Chlordane-4

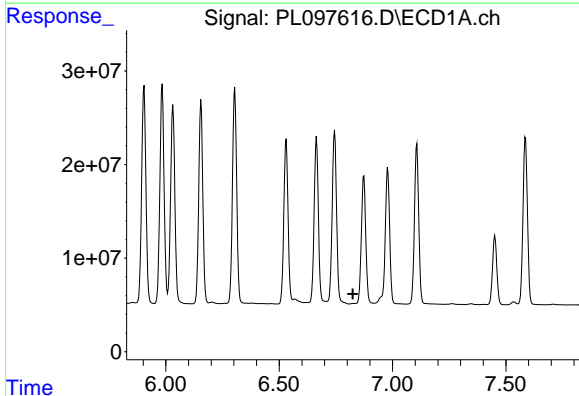
R.T.: 5.984 min
 Delta R.T.: -0.003 min
 Response: 302719805
 Conc: 295.13 ng/ml

Instrument :
 ECD_L
 ClientSampleId :
 PB170065BS



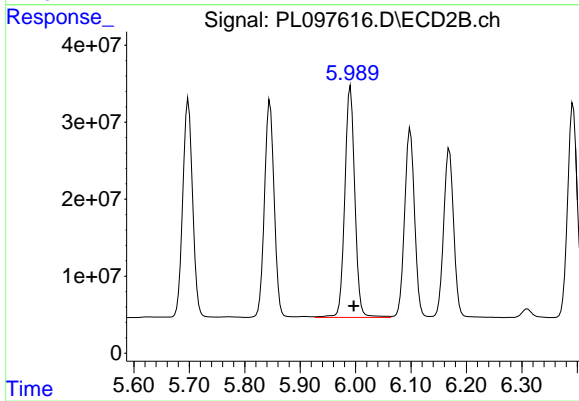
#26 Chlordane-4

R.T.: 5.104 min
 Delta R.T.: 0.002 min
 Response: 429009198
 Conc: 555.72 ng/ml



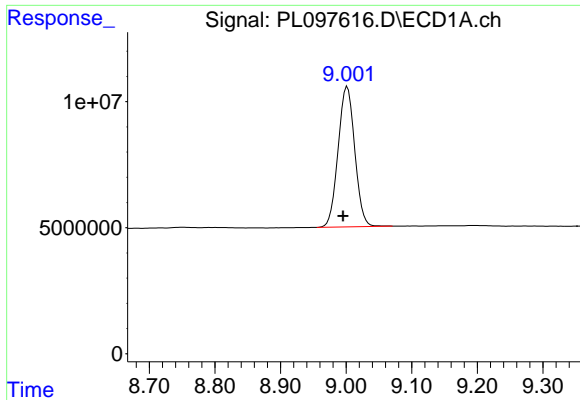
#27 Chlordane-5

R.T.: 0.000 min
 Exp R.T. : 6.825 min
 Response: 0
 Conc: N.D.



#27 Chlordane-5

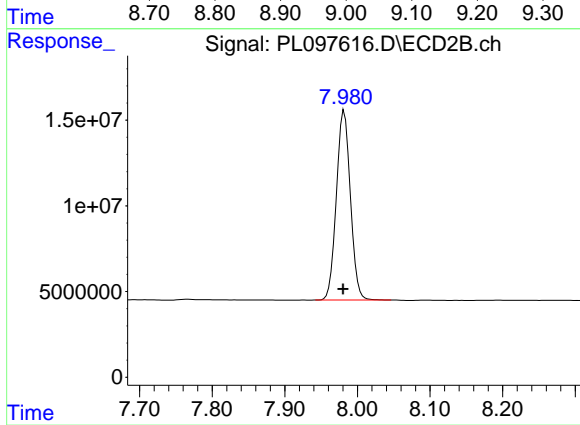
R.T.: 5.991 min
 Delta R.T.: -0.006 min
 Response: 378204610
 Conc: 1277.21 ng/ml



#28 Decachlorobiphenyl

R.T.: 9.002 min
Delta R.T.: 0.007 min
Response: 98242323
Conc: 33.04 ng/ml

Instrument :
ECD_L
ClientSampleId :
PB170065BS



#28 Decachlorobiphenyl

R.T.: 7.982 min
Delta R.T.: 0.002 min
Response: 148375516
Conc: 28.59 ng/ml