

Data Path : Z:\pestpcbsrv\HPCHEM1\ECD_L\Data\PL101325\
 Data File : PL097619.D
 Signal(s) : Signal #1: ECD1A.ch Signal #2: ECD2B.ch
 Acq On : 13 Oct 2025 14:20
 Operator : AR\AJ
 Sample : Q3326-01MS
 Misc :
 ALS Vial : 9 Sample Multiplier: 1

Instrument :
 ECD_L
 ClientSampleId :
 TP-1MS

Integration File signal 1: autoint1.e
 Integration File signal 2: autoint2.e
 Quant Time: Oct 14 02:23:45 2025
 Quant Method : Z:\pestpcbsrv\HPCHEM1\ECD_L\methods\PL100725.M
 Quant Title : GC Extractables
 QLast Update : Tue Oct 07 16:47:00 2025
 Response via : Initial Calibration
 Integrator: ChemStation

Volume Inj. : 1 µl
 Signal #1 Phase : ZB-MR2 Signal #2 Phase: ZB-MR2
 Signal #1 Info : 30M x 0.32mm x0.5 Signal #2 Info : 30M x 0.32mm x0.25µm

	Compound	RT#1	RT#2	Resp#1	Resp#2	ng/ml	ng/ml

System Monitoring Compounds							
1)	SA Tetrachlo...	3.526	2.823	99690882	97971616	24.454	16.097 #
28)	SA Decachlor...	8.997	7.982	48618037	72990493	16.350	14.066
Target Compounds							
2)	A alpha-BHC	3.972	3.328	337.9E6	485.2E6	50.085	49.173
3)	MA gamma-BHC...	4.300	3.660	316.6E6	446.8E6	49.808	48.627
4)	MA Heptachlor	4.890	4.007	307.8E6	422.0E6	47.710	45.905
5)	MB Aldrin	5.229	4.289	296.5E6	419.9E6	49.319	48.417
6)	B beta-BHC	4.488	3.956	131.6E6	186.0E6	50.893	46.743
7)	B delta-BHC	4.734	4.188	310.5E6	437.5E6	51.137	48.432
8)	Heptachlo...	5.649	4.791	276.9E6	374.2E6	47.559	47.384
9)	A Endosulfan I	6.030	5.161	245.1E6	349.7E6	49.308	47.421
10)	B gamma-Chl...	5.903	5.042	267.6E6	402.9E6	49.307	46.341
11)	B alpha-Chl...	5.983	5.106	267.4E6	388.4E6	49.271	46.645
12)	B 4,4'-DDE	6.153	5.295	237.6E6	356.5E6	51.027	46.955
13)	MA Dieldrin	6.303	5.425	264.2E6	381.6E6	50.224	46.153
14)	MA Endrin	6.529	5.700	202.5E6	320.2E6	45.258	43.268
15)	B Endosulfa...	6.742	5.992	219.8E6	325.5E6	44.926	47.146
16)	A 4,4'-DDD	6.662	5.847	200.6E6	301.4E6	53.152	47.242
17)	MA 4,4'-DDT	6.976	6.100	182.2E6	270.1E6	44.947	40.535
18)	B Endrin al...	6.871	6.170	162.0E6	239.7E6	49.441	41.624
19)	B Endosulfa...	7.105	6.393	194.3E6	294.7E6	48.447	44.263
20)	A Methoxychlor	7.449	6.671	89344464	142.6E6	42.769	39.120
21)	B Endrin ke...	7.584	6.898	212.7E6	331.4E6	49.678	41.948
22)	Mirex	8.062	7.087	139.5E6	221.0E6	44.896	41.312
24)	Chlordane-2	5.229f	0.000	296.5E6	0	1313.737	N.D. #
25)	Chlordane-3	5.903	5.042	267.6E6	402.9E6	327.273	439.745 #
26)	Chlordane-4	5.983	5.106	267.4E6	388.4E6	260.661	503.147 #
27)	Chlordane-5	0.000	5.992	0	325.5E6	N.D.	1099.365 #

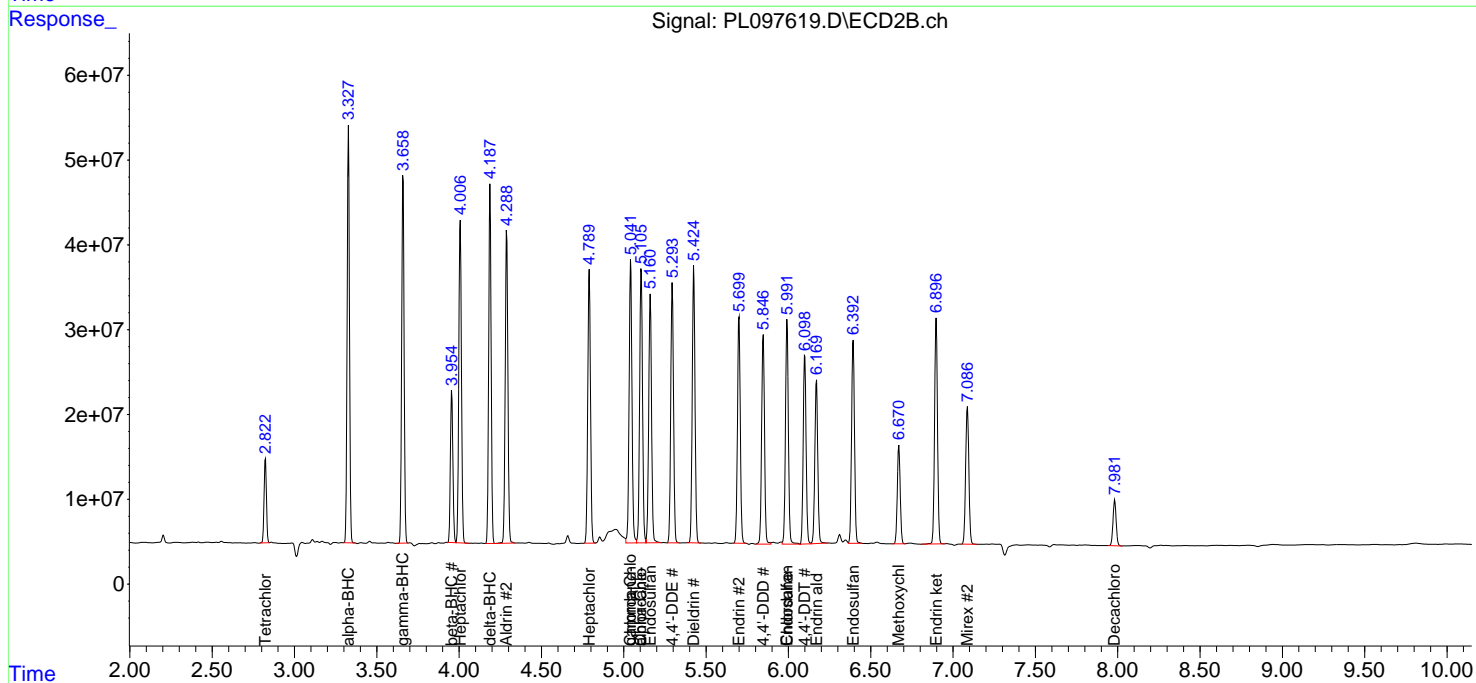
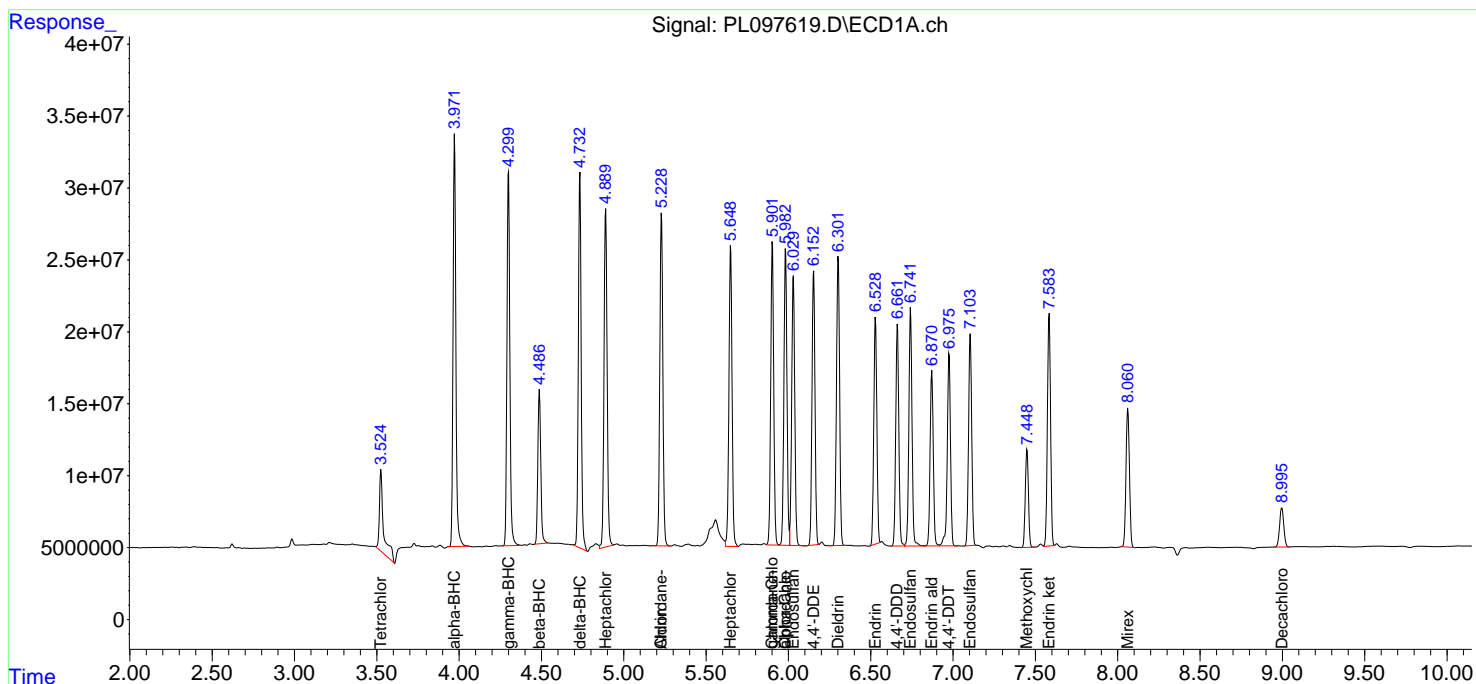
(f)=RT Delta > 1/2 Window (#)=Amounts differ by > 25% (m)=manual int.

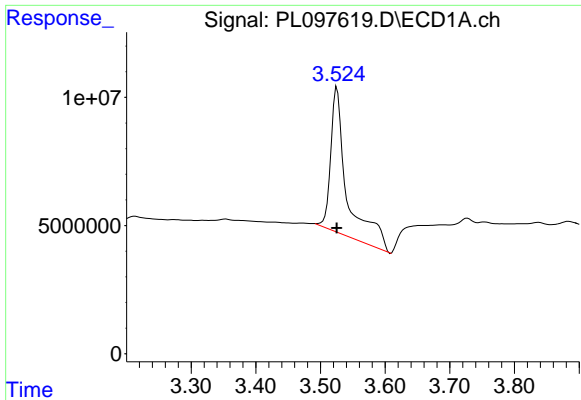
Data Path : Z:\pestpcbsrv\HPCHEM1\ECD_L\Data\PL101325\
 Data File : PL097619.D
 Signal(s) : Signal #1: ECD1A.ch Signal #2: ECD2B.ch
 Acq On : 13 Oct 2025 14:20
 Operator : AR\AJ
 Sample : Q3326-01MS
 Misc :
 ALS Vial : 9 Sample Multiplier: 1

Instrument :
 ECD_L
 ClientSampleId :
 TP-1MS

Integration File signal 1: autoint1.e
 Integration File signal 2: autoint2.e
 Quant Time: Oct 14 02:23:45 2025
 Quant Method : Z:\pestpcbsrv\HPCHEM1\ECD_L\methods\PL100725.M
 Quant Title : GC Extractables
 QLast Update : Tue Oct 07 16:47:00 2025
 Response via : Initial Calibration
 Integrator: ChemStation

Volume Inj. : 1 µl
 Signal #1 Phase : ZB-MR1 Signal #2 Phase: ZB-MR2
 Signal #1 Info : 30M x 0.32mm x0.5 Signal #2 Info : 30M x 0.32mm x0.25µm

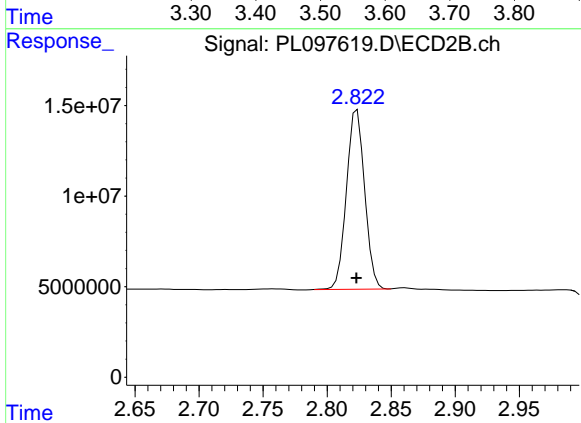




#1 Tetrachloro-m-xylene

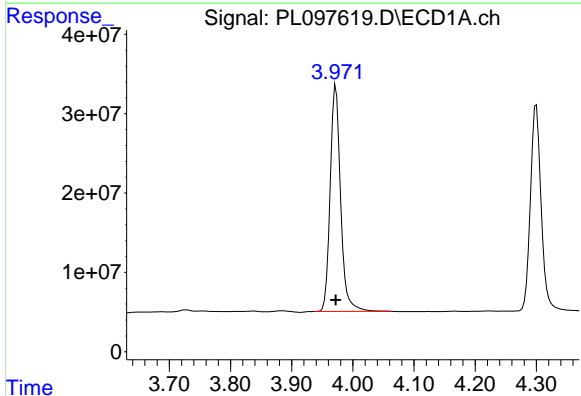
R.T.: 3.526 min
 Delta R.T.: 0.000 min
 Response: 99690882
 Conc: 24.45 ng/ml

Instrument :
 ECD_L
 ClientSampleId :
 TP-1MS



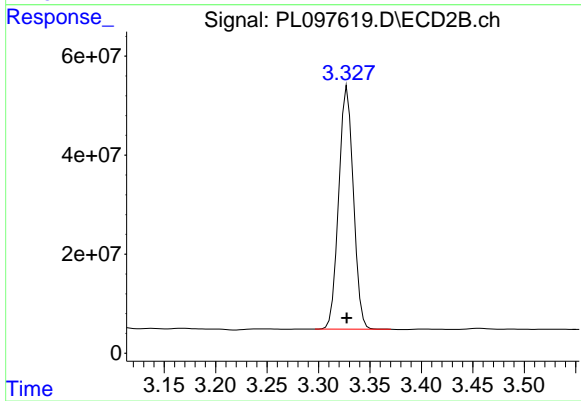
#1 Tetrachloro-m-xylene

R.T.: 2.823 min
 Delta R.T.: 0.000 min
 Response: 97971616
 Conc: 16.10 ng/ml



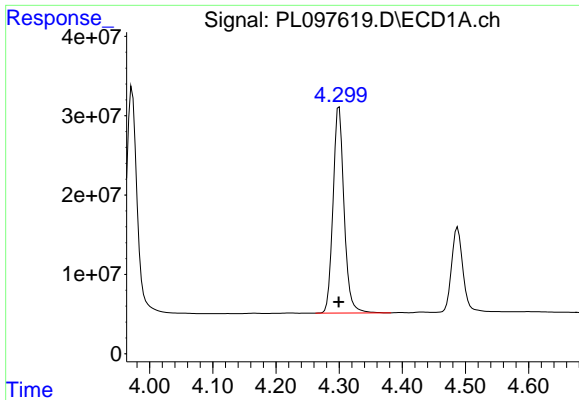
#2 alpha-BHC

R.T.: 3.972 min
 Delta R.T.: 0.000 min
 Response: 337858355
 Conc: 50.09 ng/ml



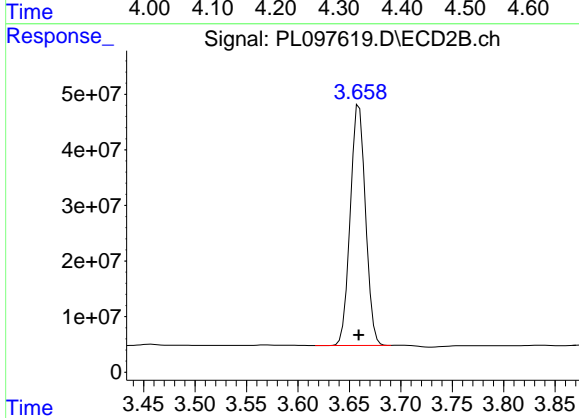
#2 alpha-BHC

R.T.: 3.328 min
 Delta R.T.: 0.000 min
 Response: 485184520
 Conc: 49.17 ng/ml

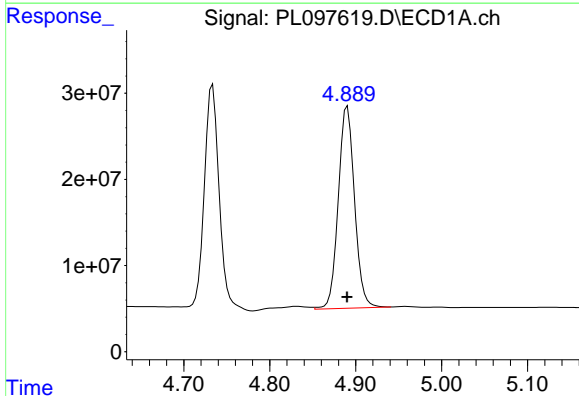


#3 gamma-BHC (Lindane)
 R.T.: 4.300 min
 Delta R.T.: 0.000 min
 Response: 316595702
 Conc: 49.81 ng/ml

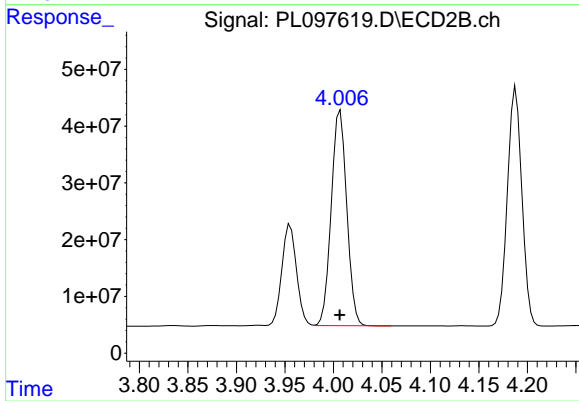
Instrument :
 ECD_L
 ClientSampleId :
 TP-1MS



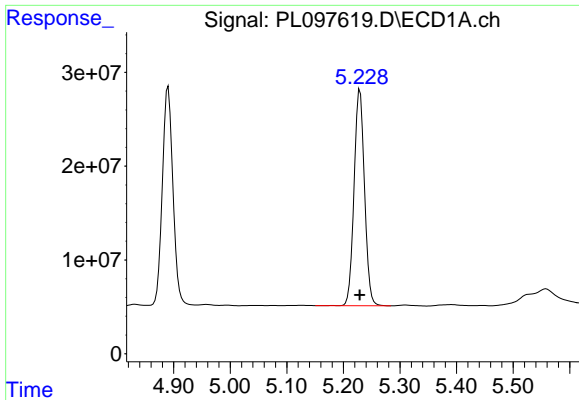
#3 gamma-BHC (Lindane)
 R.T.: 3.660 min
 Delta R.T.: 0.000 min
 Response: 446752561
 Conc: 48.63 ng/ml



#4 Heptachlor
 R.T.: 4.890 min
 Delta R.T.: 0.000 min
 Response: 307764545
 Conc: 47.71 ng/ml



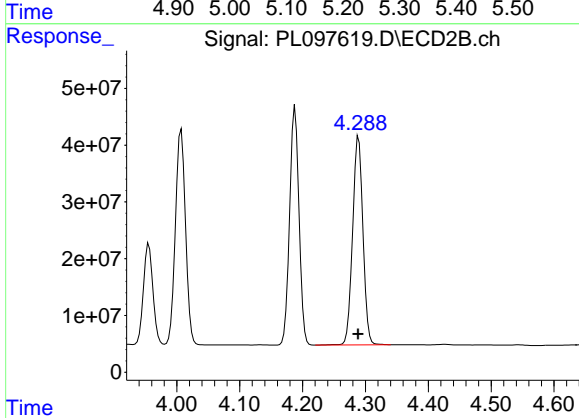
#4 Heptachlor
 R.T.: 4.007 min
 Delta R.T.: 0.000 min
 Response: 421973419
 Conc: 45.91 ng/ml



#5 Aldrin

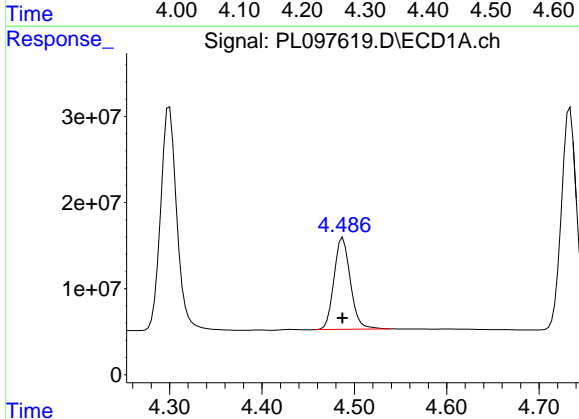
R.T.: 5.229 min
 Delta R.T.: 0.000 min
 Response: 296538303
 Conc: 49.32 ng/ml

Instrument :
 ECD_L
 ClientSampleId :
 TP-1MS



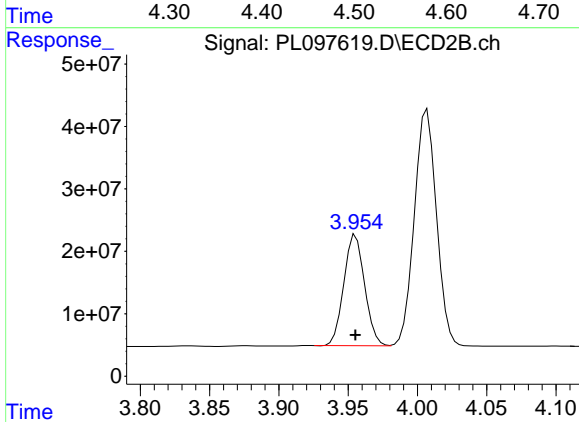
#5 Aldrin

R.T.: 4.289 min
 Delta R.T.: 0.000 min
 Response: 419862512
 Conc: 48.42 ng/ml



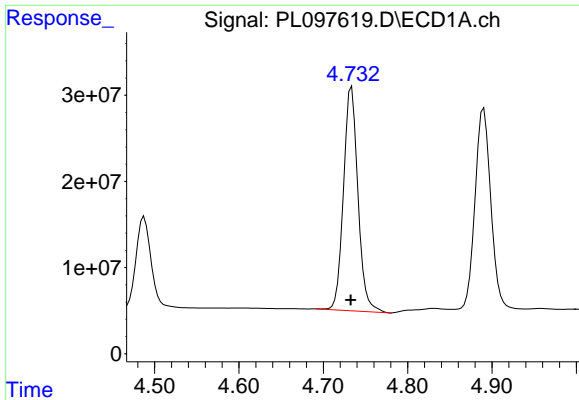
#6 beta-BHC

R.T.: 4.488 min
 Delta R.T.: 0.000 min
 Response: 131583193
 Conc: 50.89 ng/ml



#6 beta-BHC

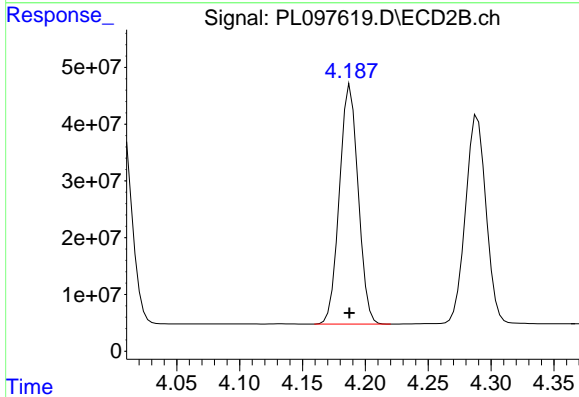
R.T.: 3.956 min
 Delta R.T.: 0.000 min
 Response: 185951644
 Conc: 46.74 ng/ml



#7 delta-BHC

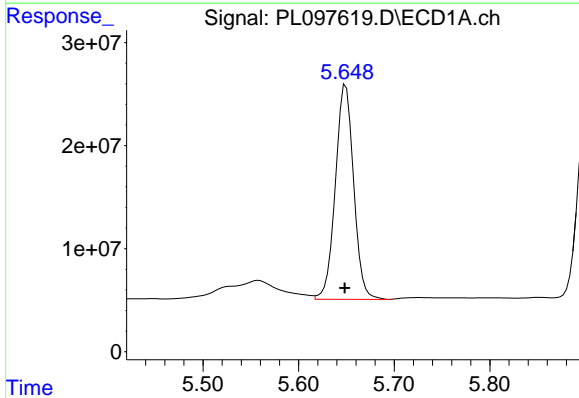
R.T.: 4.734 min
 Delta R.T.: 0.001 min
 Response: 310534663
 Conc: 51.14 ng/ml

Instrument :
 ECD_L
 ClientSampleId :
 TP-1MS



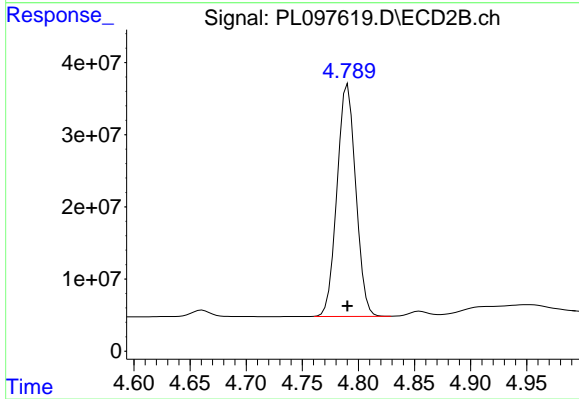
#7 delta-BHC

R.T.: 4.188 min
 Delta R.T.: 0.000 min
 Response: 437535633
 Conc: 48.43 ng/ml



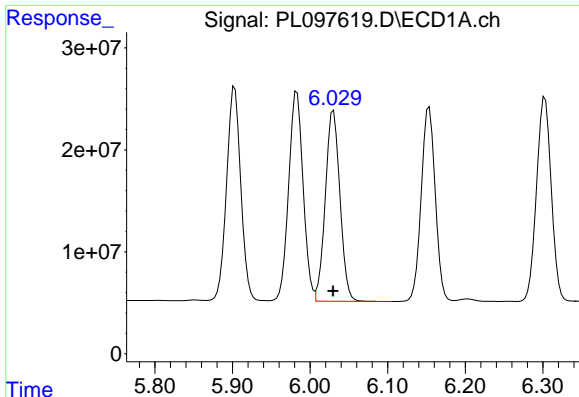
#8 Heptachlor epoxide

R.T.: 5.649 min
 Delta R.T.: 0.000 min
 Response: 276901249
 Conc: 47.56 ng/ml



#8 Heptachlor epoxide

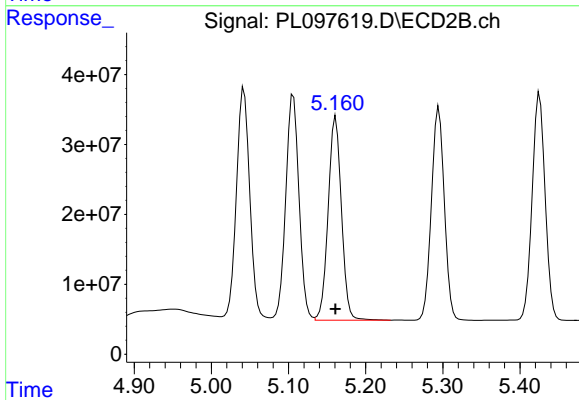
R.T.: 4.791 min
 Delta R.T.: 0.000 min
 Response: 374239823
 Conc: 47.38 ng/ml



#9 Endosulfan I

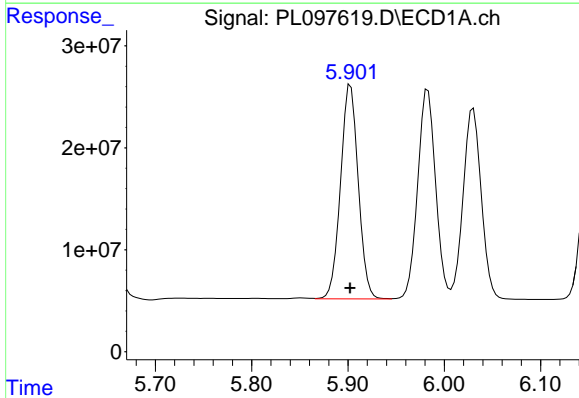
R.T.: 6.030 min
 Delta R.T.: 0.000 min
 Response: 245131495
 Conc: 49.31 ng/ml

Instrument :
 ECD_L
 ClientSampleId :
 TP-1MS



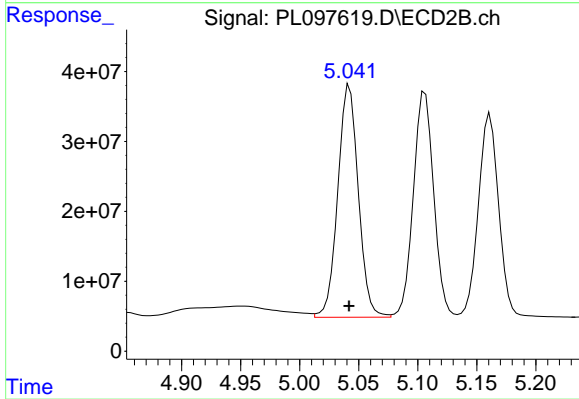
#9 Endosulfan I

R.T.: 5.161 min
 Delta R.T.: 0.000 min
 Response: 349697126
 Conc: 47.42 ng/ml



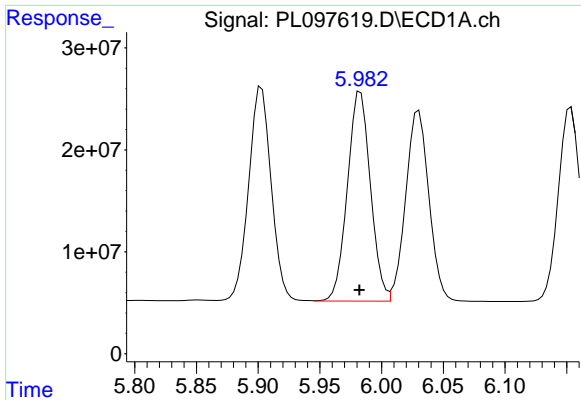
#10 gamma-Chlordane

R.T.: 5.903 min
 Delta R.T.: 0.000 min
 Response: 267608710
 Conc: 49.31 ng/ml



#10 gamma-Chlordane

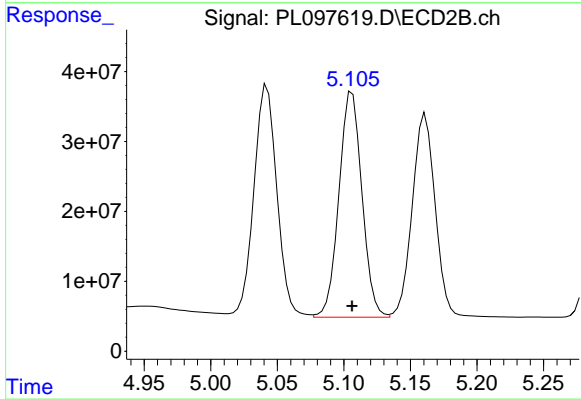
R.T.: 5.042 min
 Delta R.T.: 0.000 min
 Response: 402850891
 Conc: 46.34 ng/ml



#11 alpha-Chlordane

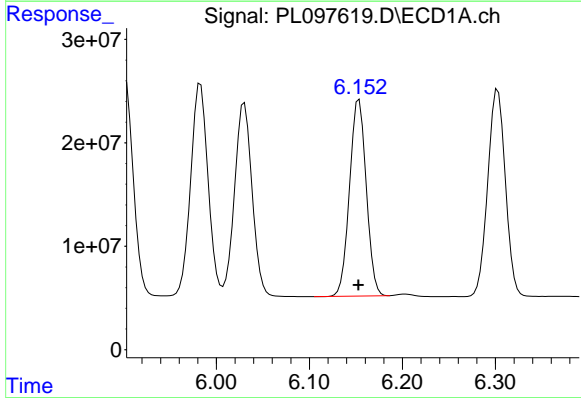
R.T.: 5.983 min
 Delta R.T.: 0.001 min
 Response: 267368352
 Conc: 49.27 ng/ml

Instrument :
 ECD_L
 ClientSampleId :
 TP-1MS



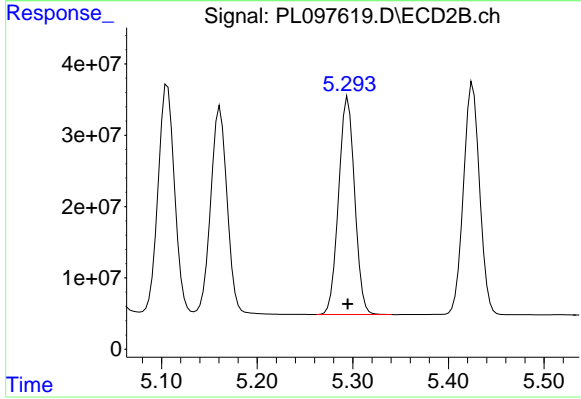
#11 alpha-Chlordane

R.T.: 5.106 min
 Delta R.T.: 0.000 min
 Response: 388420740
 Conc: 46.64 ng/ml



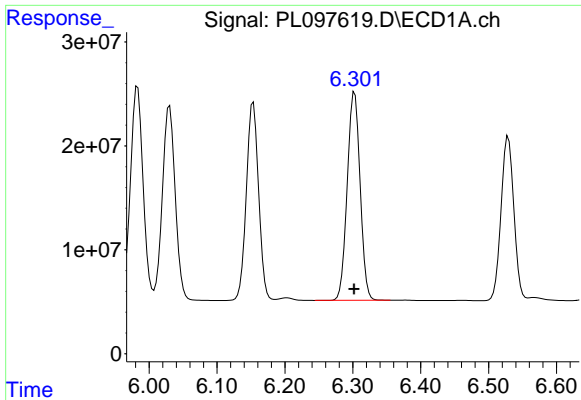
#12 4,4'-DDE

R.T.: 6.153 min
 Delta R.T.: 0.000 min
 Response: 237643883
 Conc: 51.03 ng/ml



#12 4,4'-DDE

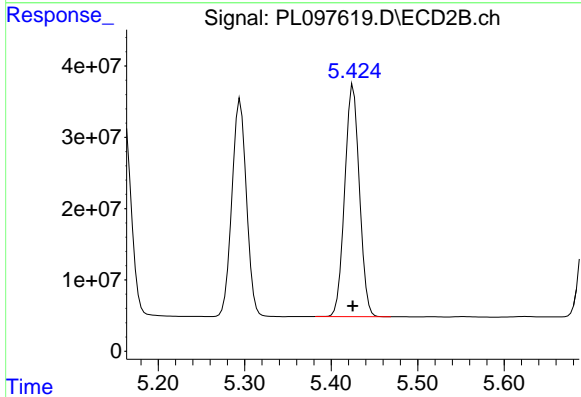
R.T.: 5.295 min
 Delta R.T.: 0.000 min
 Response: 356506508
 Conc: 46.96 ng/ml



#13 Dieldrin

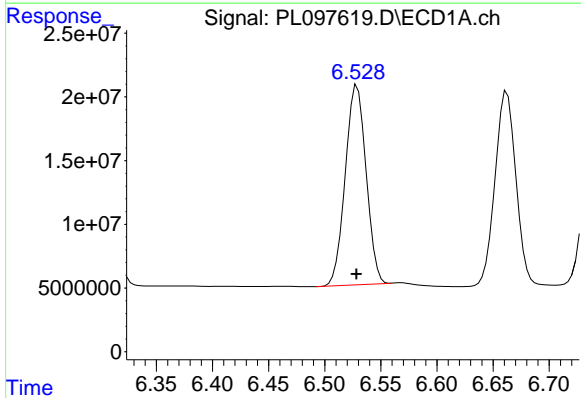
R.T.: 6.303 min
 Delta R.T.: 0.000 min
 Response: 264201586
 Conc: 50.22 ng/ml

Instrument :
 ECD_L
 ClientSampleId :
 TP-1MS



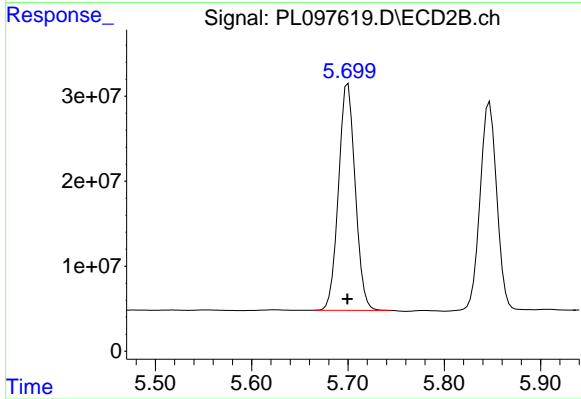
#13 Dieldrin

R.T.: 5.425 min
 Delta R.T.: 0.000 min
 Response: 381607714
 Conc: 46.15 ng/ml



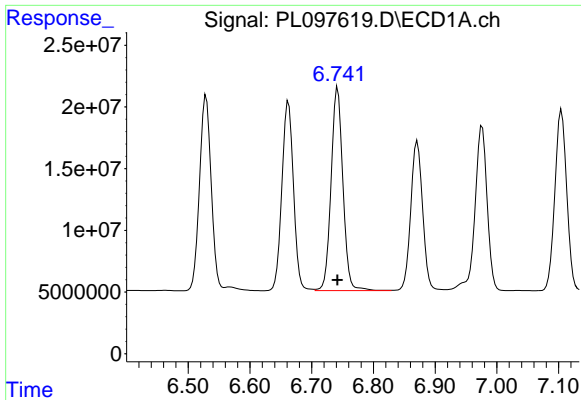
#14 Endrin

R.T.: 6.529 min
 Delta R.T.: 0.000 min
 Response: 202498350
 Conc: 45.26 ng/ml



#14 Endrin

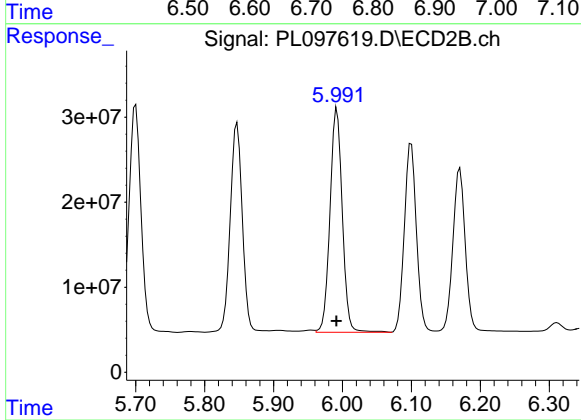
R.T.: 5.700 min
 Delta R.T.: 0.000 min
 Response: 320249675
 Conc: 43.27 ng/ml



#15 Endosulfan II

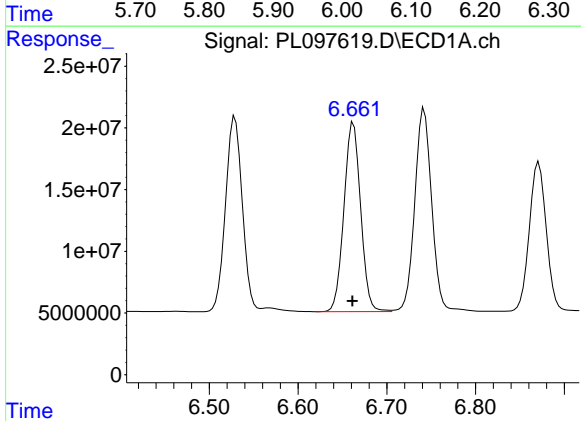
R.T.: 6.742 min
 Delta R.T.: 0.000 min
 Response: 219780924
 Conc: 44.93 ng/ml

Instrument :
 ECD_L
 ClientSampleId :
 TP-1MS



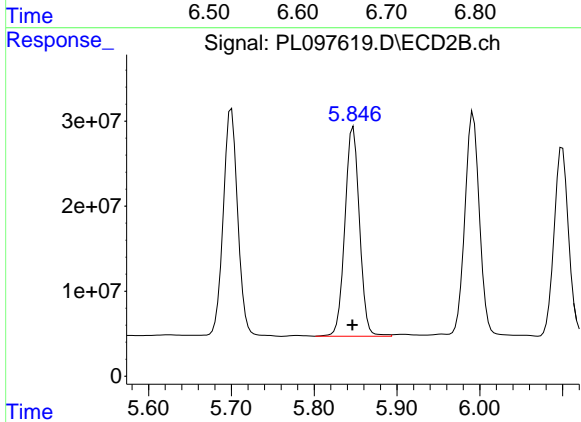
#15 Endosulfan II

R.T.: 5.992 min
 Delta R.T.: 0.000 min
 Response: 325542606
 Conc: 47.15 ng/ml



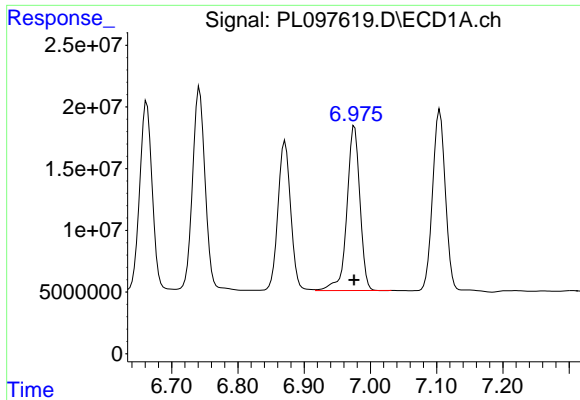
#16 4,4'-DDD

R.T.: 6.662 min
 Delta R.T.: 0.001 min
 Response: 200569729
 Conc: 53.15 ng/ml



#16 4,4'-DDD

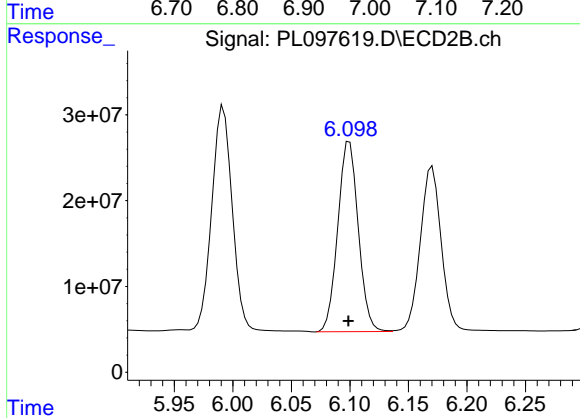
R.T.: 5.847 min
 Delta R.T.: 0.000 min
 Response: 301352587
 Conc: 47.24 ng/ml



#17 4,4'-DDT

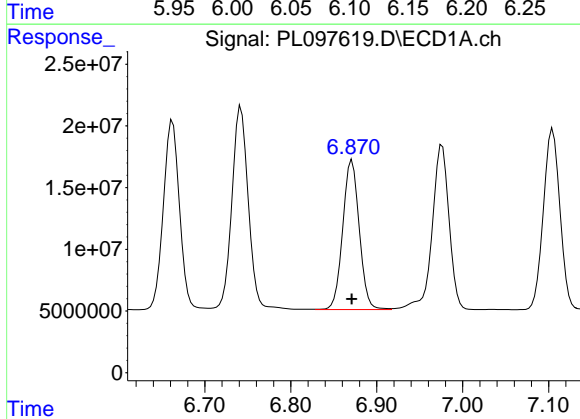
R.T.: 6.976 min
 Delta R.T.: 0.000 min
 Response: 182245563
 Conc: 44.95 ng/ml

Instrument :
 ECD_L
 ClientSampleId :
 TP-1MS



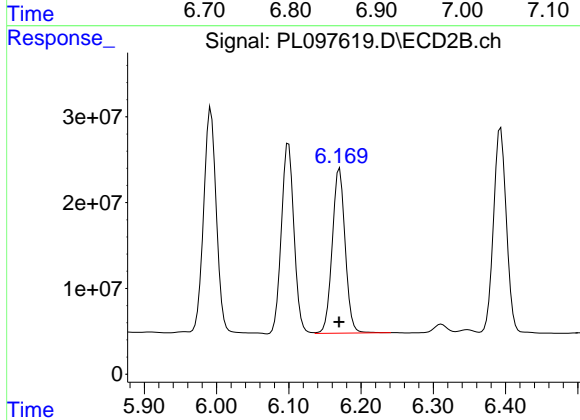
#17 4,4'-DDT

R.T.: 6.100 min
 Delta R.T.: 0.000 min
 Response: 270100133
 Conc: 40.53 ng/ml



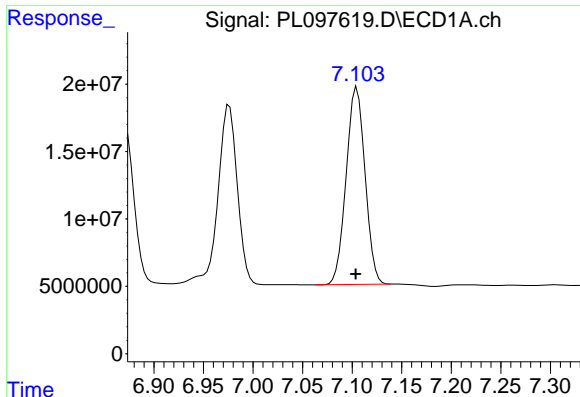
#18 Endrin aldehyde

R.T.: 6.871 min
 Delta R.T.: 0.000 min
 Response: 162005307
 Conc: 49.44 ng/ml



#18 Endrin aldehyde

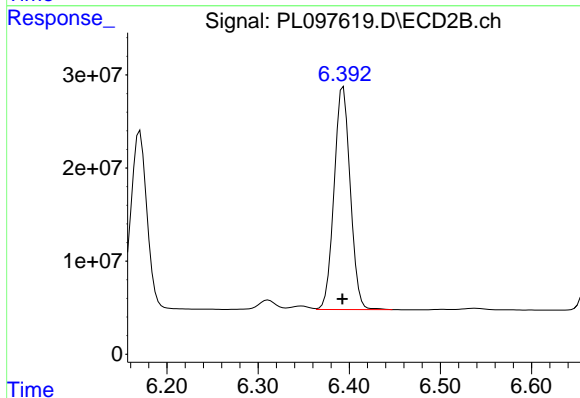
R.T.: 6.170 min
 Delta R.T.: 0.000 min
 Response: 239690068
 Conc: 41.62 ng/ml



#19 Endosulfan Sulfate

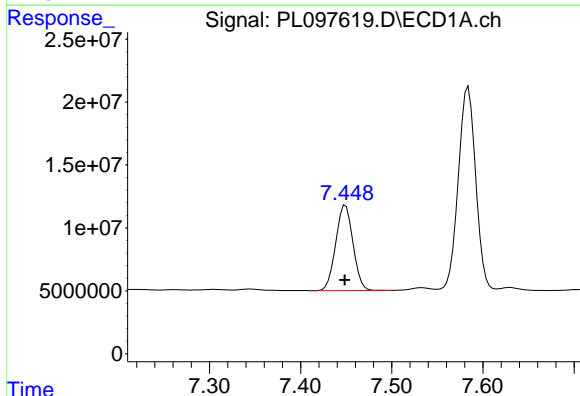
R.T.: 7.105 min
 Delta R.T.: 0.001 min
 Response: 194266473
 Conc: 48.45 ng/ml

Instrument :
 ECD_L
 ClientSampleId :
 TP-1MS



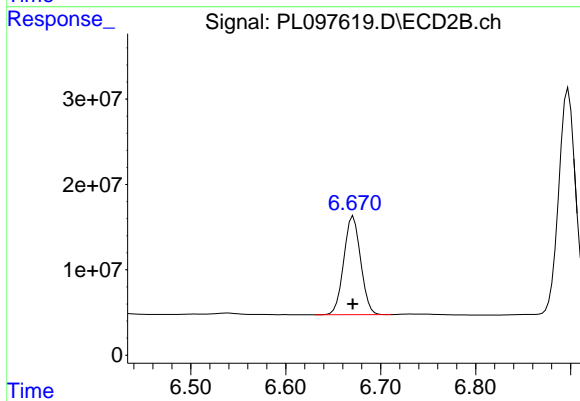
#19 Endosulfan Sulfate

R.T.: 6.393 min
 Delta R.T.: 0.000 min
 Response: 294694345
 Conc: 44.26 ng/ml



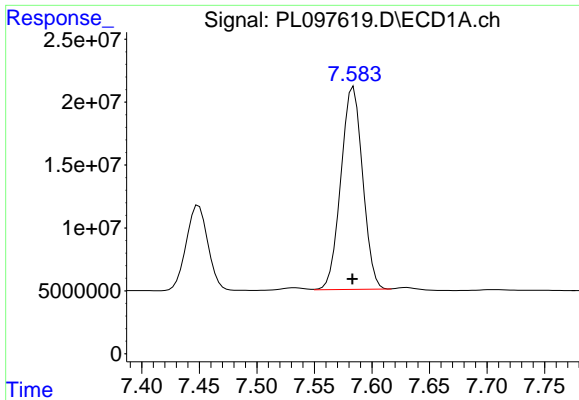
#20 Methoxychlor

R.T.: 7.449 min
 Delta R.T.: 0.001 min
 Response: 89344464
 Conc: 42.77 ng/ml



#20 Methoxychlor

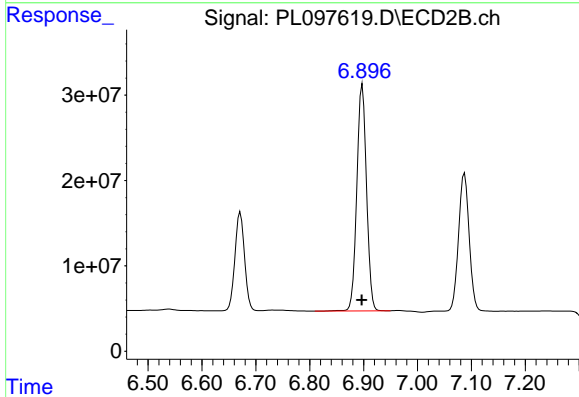
R.T.: 6.671 min
 Delta R.T.: 0.000 min
 Response: 142599167
 Conc: 39.12 ng/ml



#21 Endrin ketone

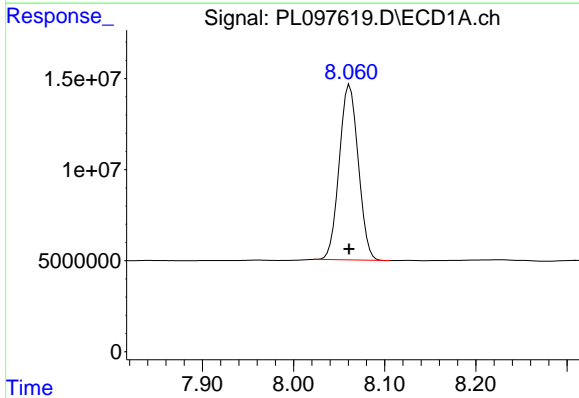
R.T.: 7.584 min
 Delta R.T.: 0.000 min
 Response: 212708266
 Conc: 49.68 ng/ml

Instrument :
 ECD_L
 ClientSampleId :
 TP-1MS



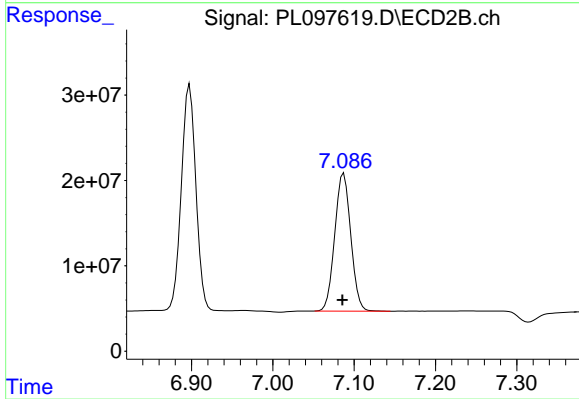
#21 Endrin ketone

R.T.: 6.898 min
 Delta R.T.: 0.001 min
 Response: 331386749
 Conc: 41.95 ng/ml



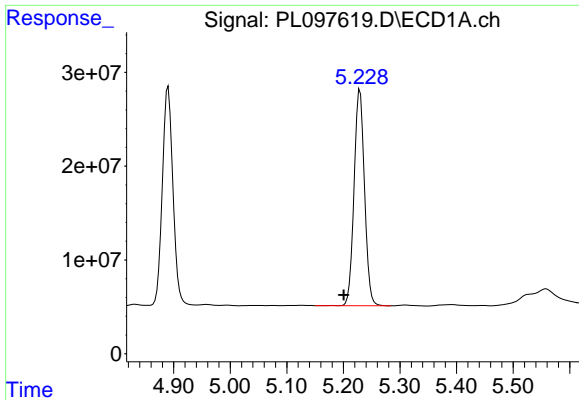
#22 Mirex

R.T.: 8.062 min
 Delta R.T.: 0.000 min
 Response: 139511738
 Conc: 44.90 ng/ml



#22 Mirex

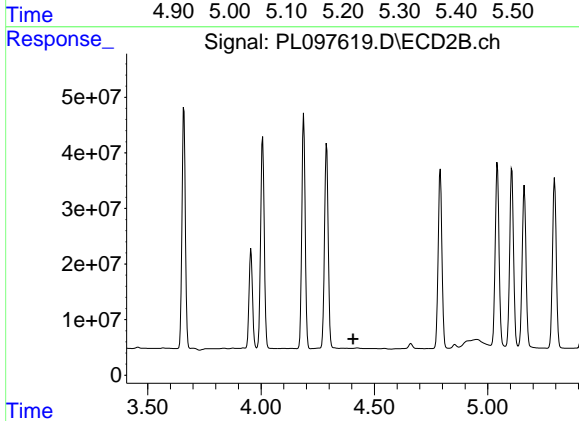
R.T.: 7.087 min
 Delta R.T.: 0.002 min
 Response: 221014279
 Conc: 41.31 ng/ml



#24 Chlordane-2

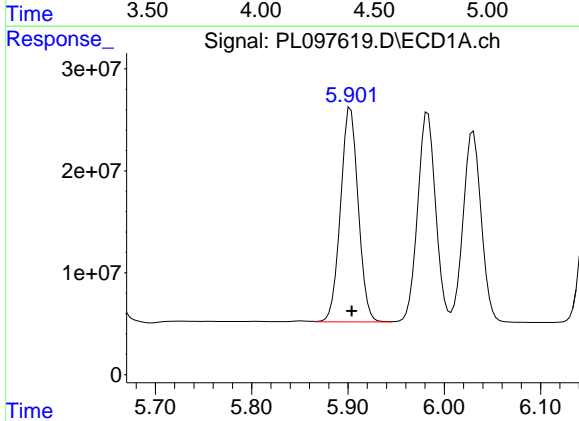
R.T.: 5.229 min
 Delta R.T.: 0.029 min
 Response: 296538303
 Conc: 1313.74 ng/m

Instrument :
 ECD_L
 ClientSampleId :
 TP-1MS



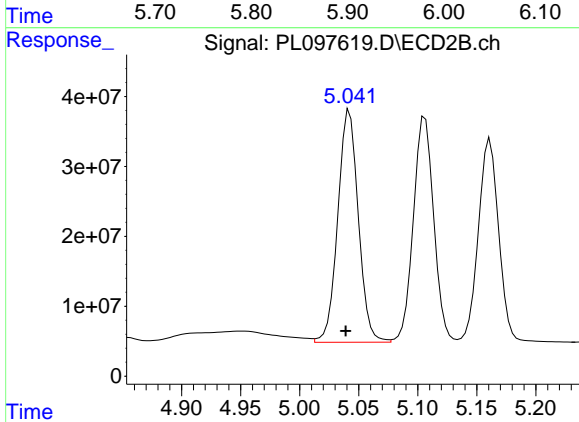
#24 Chlordane-2

R.T.: 0.000 min
 Exp R.T. : 4.406 min
 Response: 0
 Conc: N.D.



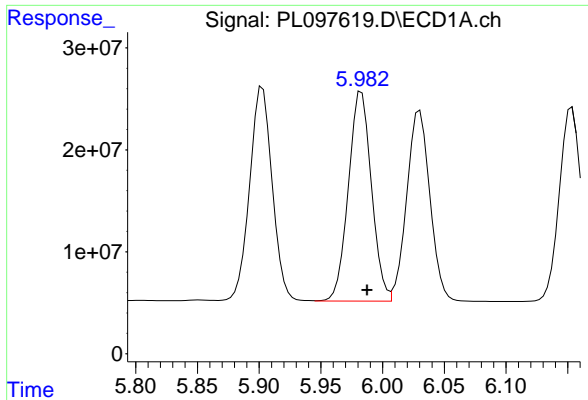
#25 Chlordane-3

R.T.: 5.903 min
 Delta R.T.: 0.000 min
 Response: 267608710
 Conc: 327.27 ng/ml



#25 Chlordane-3

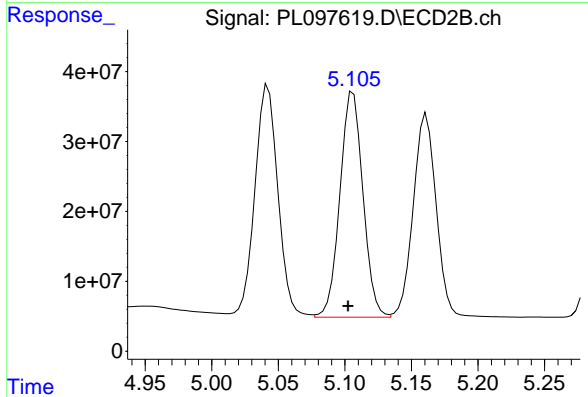
R.T.: 5.042 min
 Delta R.T.: 0.003 min
 Response: 402850891
 Conc: 439.75 ng/ml



#26 Chlordane-4

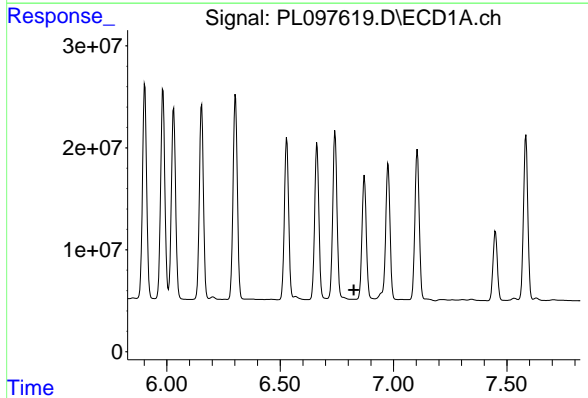
R.T.: 5.983 min
 Delta R.T.: -0.004 min
 Response: 267368352
 Conc: 260.66 ng/ml

Instrument :
 ECD_L
 ClientSampleId :
 TP-1MS



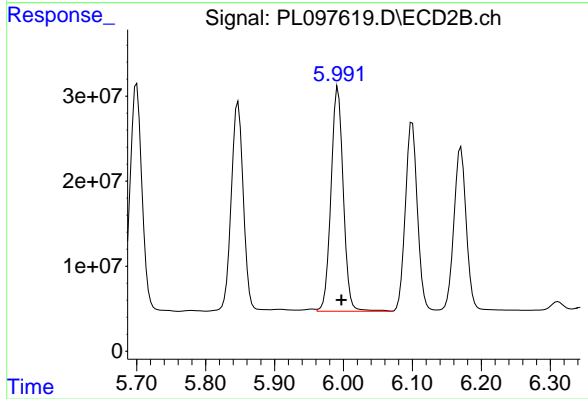
#26 Chlordane-4

R.T.: 5.106 min
 Delta R.T.: 0.004 min
 Response: 388420740
 Conc: 503.15 ng/ml



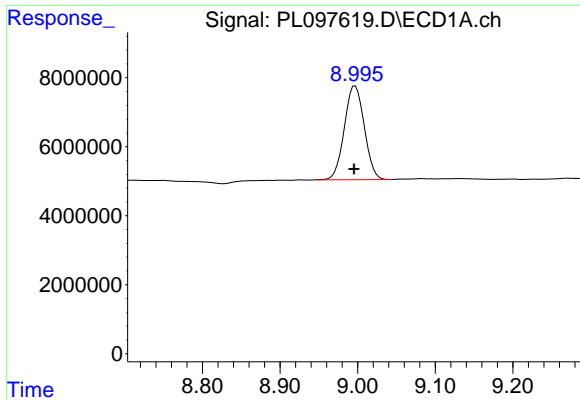
#27 Chlordane-5

R.T.: 0.000 min
 Exp R.T. : 6.825 min
 Response: 0
 Conc: N.D.



#27 Chlordane-5

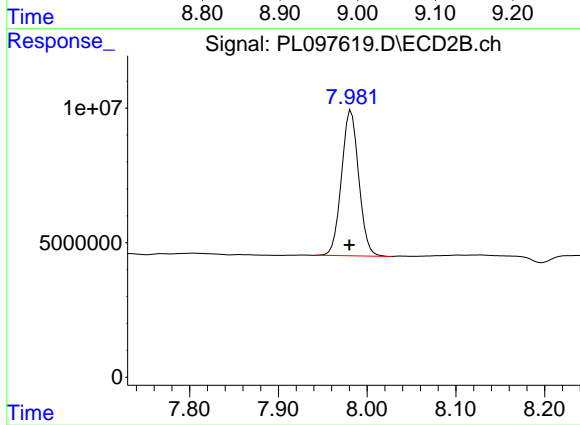
R.T.: 5.992 min
 Delta R.T.: -0.005 min
 Response: 325542606
 Conc: 1099.37 ng/ml



#28 Decachlorobiphenyl

R.T.: 8.997 min
Delta R.T.: 0.001 min
Response: 48618037
Conc: 16.35 ng/ml

Instrument :
ECD_L
ClientSampleId :
TP-1MS



#28 Decachlorobiphenyl

R.T.: 7.982 min
Delta R.T.: 0.002 min
Response: 72990493
Conc: 14.07 ng/ml