

Data Path : Z:\pestpcbsrv\HPCHEM1\ECD_L\Data\PL101325\
 Data File : PL097621.D
 Signal(s) : Signal #1: ECD1A.ch Signal #2: ECD2B.ch
 Acq On : 13 Oct 2025 14:47
 Operator : AR\AJ
 Sample : Q3326-0S
 Misc :
 ALS Vial : 11 Sample Multiplier: 1

Instrument :
 ECD_L
 ClientSampleId :
 TP-2

Integration File signal 1: autoint1.e
 Integration File signal 2: autoint2.e
 Quant Time: Oct 14 02:24:03 2025
 Quant Method : Z:\pestpcbsrv\HPCHEM1\ECD_L\methods\PL100725.M
 Quant Title : GC Extractables
 QLast Update : Tue Oct 07 16:47:00 2025
 Response via : Initial Calibration
 Integrator: ChemStation

Volume Inj. : 1 µl
 Signal #1 Phase : ZB-MR1 Signal #2 Phase: ZB-MR2
 Signal #1 Info : 30M x 0.32mm x0.5 Signal #2 Info : 30M x 0.32mm x0.25µm

	Compound	RT#1	RT#2	Resp#1	Resp#2	ng/ml	ng/ml

System Monitoring Compounds							
1)	SA Tetrachlo...	3.525	2.824	107.0E6	105.2E6	26.239	17.278 #
28)	SA Decachlor...	8.998	7.981	40267863	74392501	13.542	14.336
Target Compounds							
9)	A Endosulfan I	6.056f	5.182f	11932745	31126186	2.400	4.221 #
10)	B gamma-Chl...	5.875f	0.000	2034582	0	0.375	N.D. #
13)	MA Dieldrin	0.000	5.428	0	19879936	N.D.	2.404 #
14)	MA Endrin	0.000	5.708	0	6842847	N.D.	0.925 #
15)	B Endosulfa...	0.000	5.996	0	26273560	N.D.	3.805 #
16)	A 4,4'-DDD	6.648	0.000	5890689	0	1.561	N.D. #
18)	B Endrin al...	0.000	6.183	0	20035539	N.D.	3.479 #
20)	A Methoxychlor	0.000	6.699f	0	25100265	N.D.	6.886 #
25)	Chlordane-3	5.875f	0.000	2034582	0	2.488	N.D. #
27)	Chlordane-5	0.000	5.996	0	26273560	N.D.	88.726 #

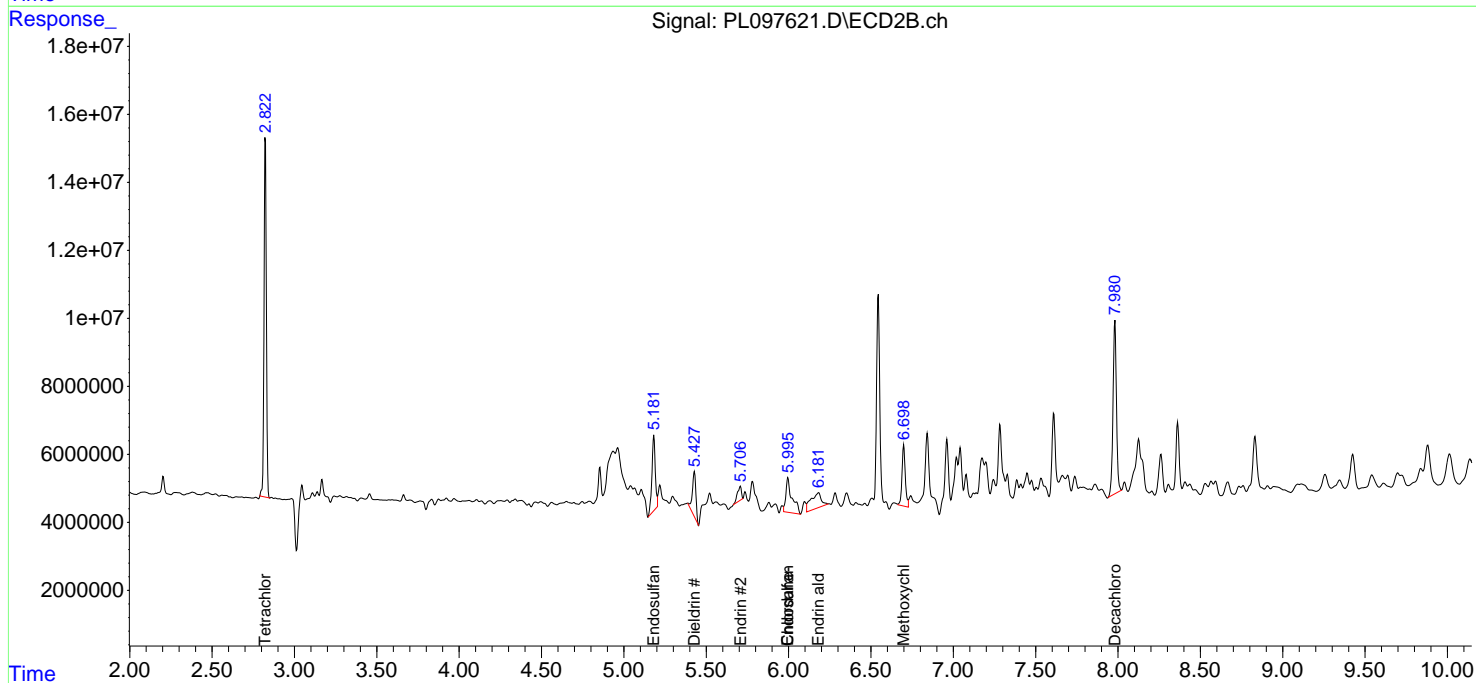
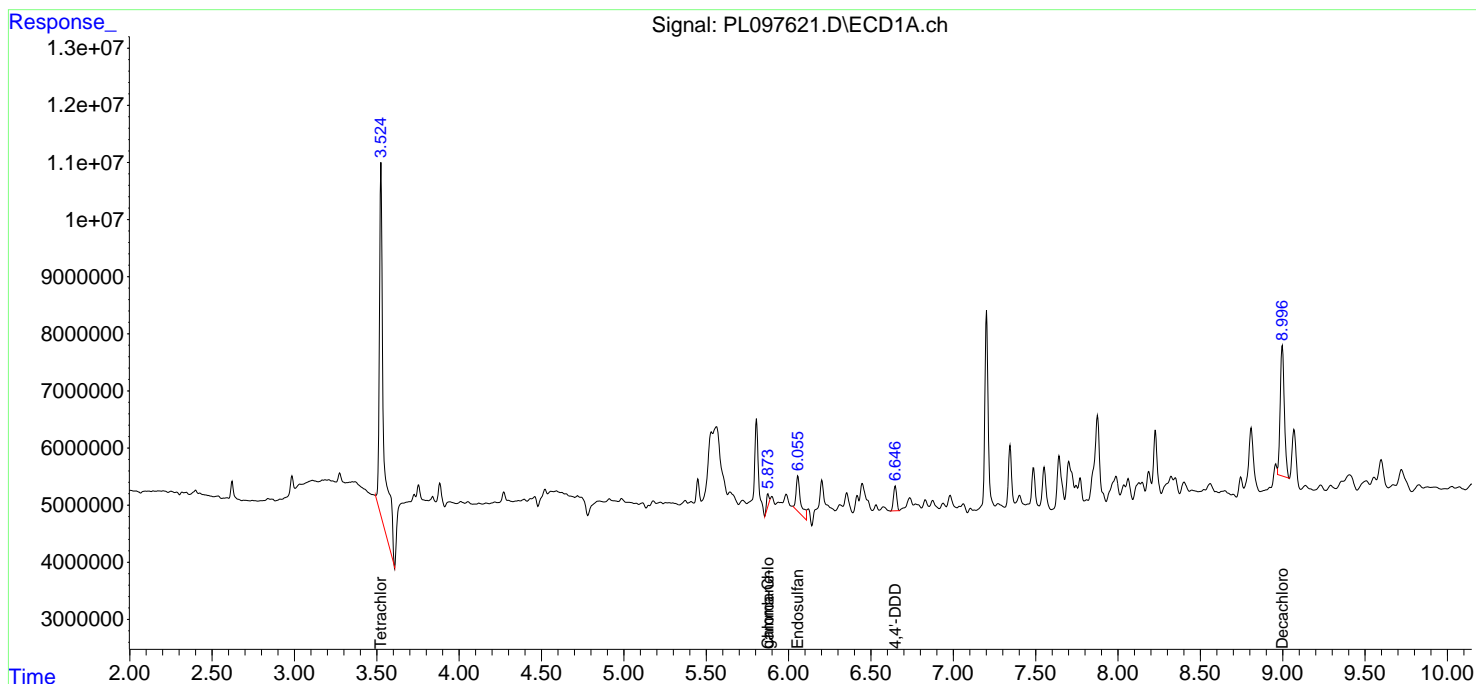
(f)=RT Delta > 1/2 Window (#)=Amounts differ by > 25% (m)=manual int.

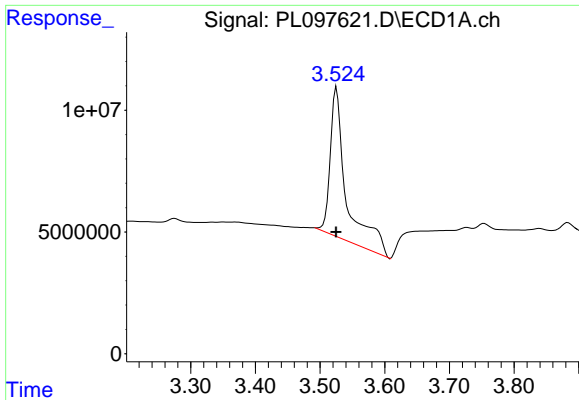
Data Path : Z:\pestpcbsrv\HPCHEM1\ECD_L\Data\PL101325\
 Data File : PL097621.D
 Signal(s) : Signal #1: ECD1A.ch Signal #2: ECD2B.ch
 Acq On : 13 Oct 2025 14:47
 Operator : AR\AJ
 Sample : Q3326-0S
 Misc :
 ALS Vial : 11 Sample Multiplier: 1

Instrument :
 ECD_L
 ClientSampleId :
 TP-2

Integration File signal 1: autoint1.e
 Integration File signal 2: autoint2.e
 Quant Time: Oct 14 02:24:03 2025
 Quant Method : Z:\pestpcbsrv\HPCHEM1\ECD_L\methods\PL100725.M
 Quant Title : GC Extractables
 QLast Update : Tue Oct 07 16:47:00 2025
 Response via : Initial Calibration
 Integrator: ChemStation

Volume Inj. : 1 µl
 Signal #1 Phase : ZB-MR1 Signal #2 Phase: ZB-MR2
 Signal #1 Info : 30M x 0.32mm x0.5 Signal #2 Info : 30M x 0.32mm x0.25µm

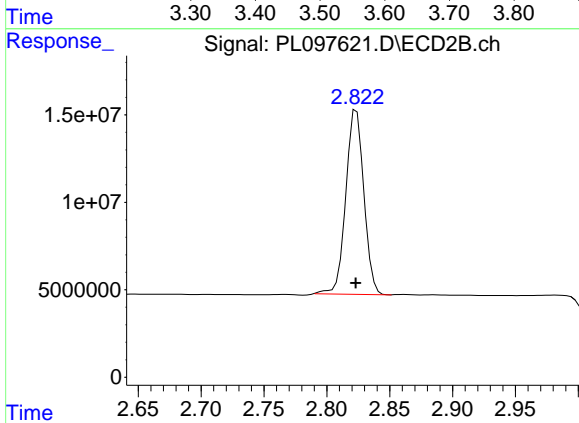




#1 Tetrachloro-m-xylene

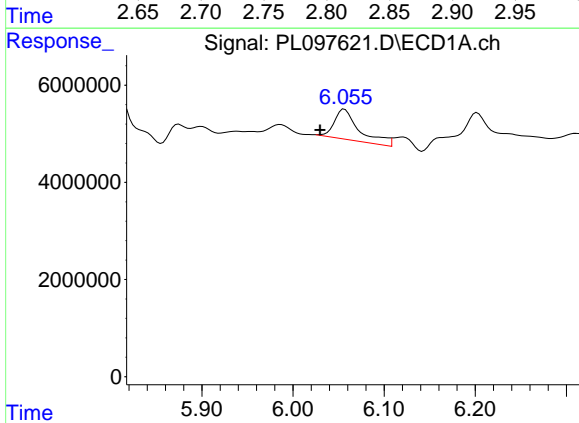
R.T.: 3.525 min
 Delta R.T.: 0.000 min
 Response: 106968738
 Conc: 26.24 ng/ml

Instrument :
 ECD_L
 ClientSampleId :
 TP-2



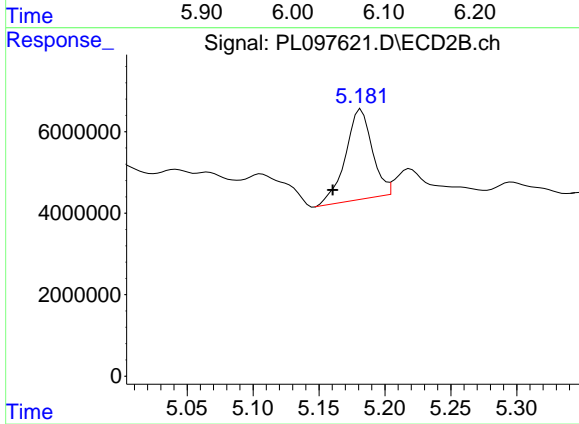
#1 Tetrachloro-m-xylene

R.T.: 2.824 min
 Delta R.T.: 0.000 min
 Response: 105162556
 Conc: 17.28 ng/ml



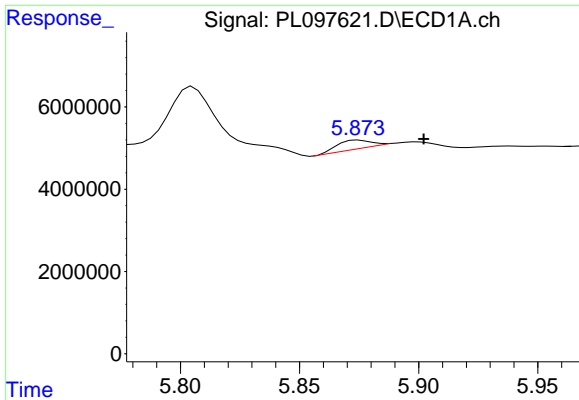
#9 Endosulfan I

R.T.: 6.056 min
 Delta R.T.: 0.027 min
 Response: 11932745
 Conc: 2.40 ng/ml



#9 Endosulfan I

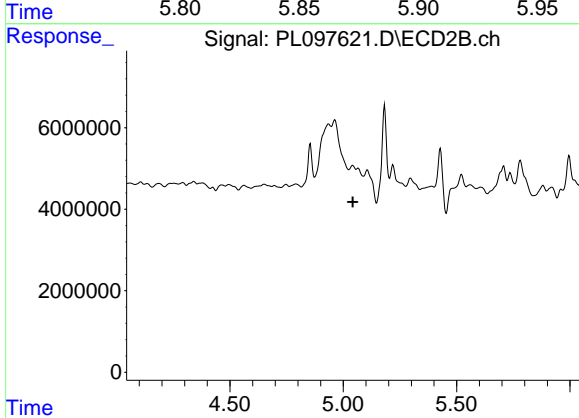
R.T.: 5.182 min
 Delta R.T.: 0.021 min
 Response: 31126186
 Conc: 4.22 ng/ml



#10 gamma-Chlordane

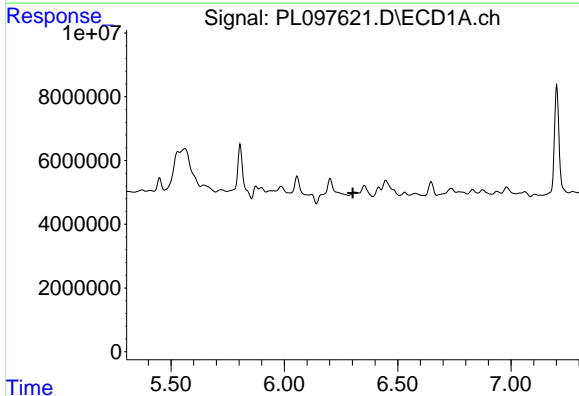
R.T.: 5.875 min
 Delta R.T.: -0.027 min
 Response: 2034582
 Conc: 0.37 ng/ml

Instrument :
 ECD_L
 ClientSampleId :
 TP-2



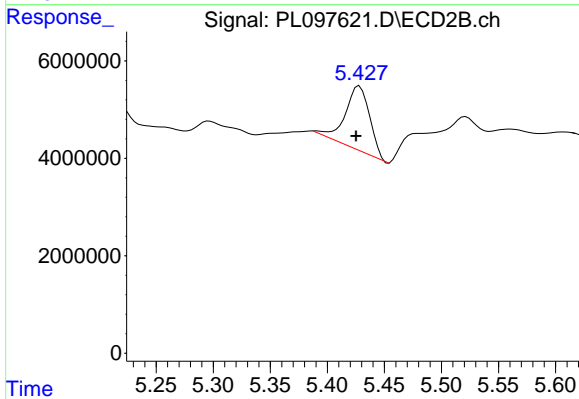
#10 gamma-Chlordane

R.T.: 0.000 min
 Exp R.T. : 5.042 min
 Response: 0
 Conc: N.D.



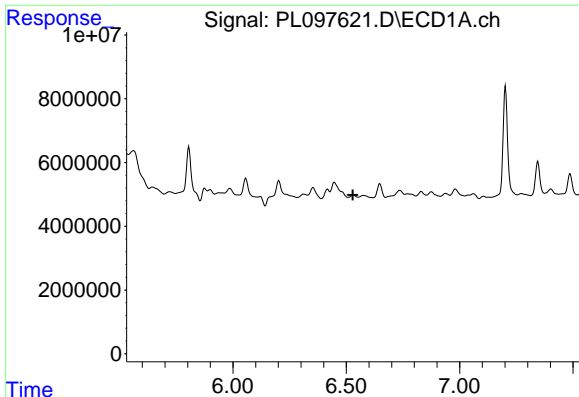
#13 Dieldrin

R.T.: 0.000 min
 Exp R.T. : 6.302 min
 Response: 0
 Conc: N.D.



#13 Dieldrin

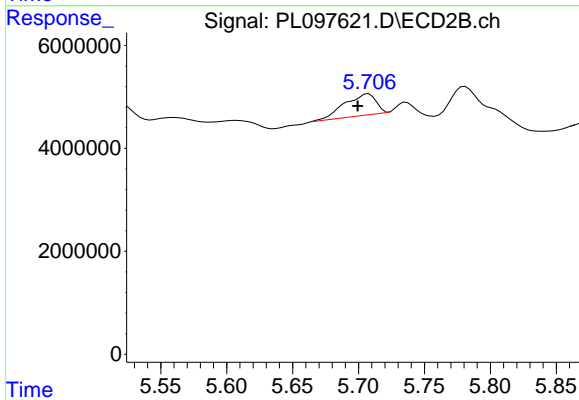
R.T.: 5.428 min
 Delta R.T.: 0.003 min
 Response: 19879936
 Conc: 2.40 ng/ml



#14 Endrin

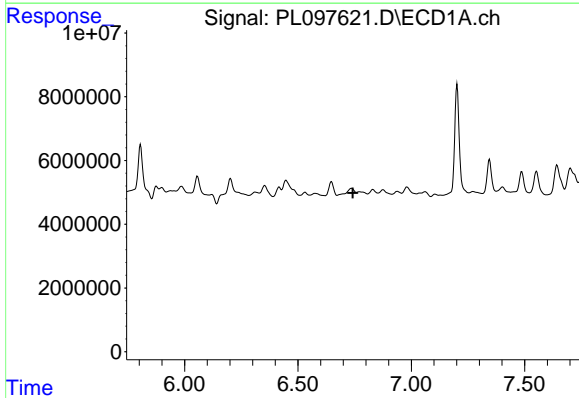
R.T.: 0.000 min
 Exp R.T.: 6.528 min
 Response: 0
 Conc: N.D.

Instrument : ECD_L
 ClientSampleId : TP-2



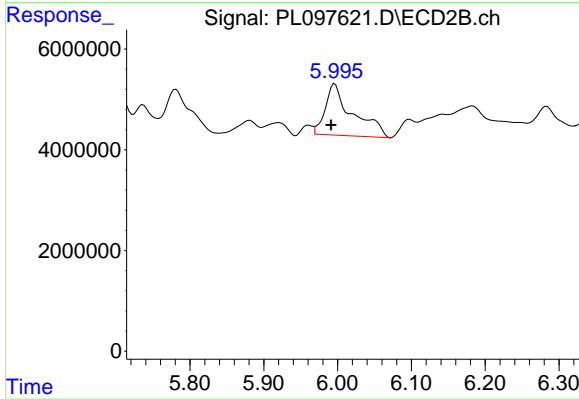
#14 Endrin

R.T.: 5.708 min
 Delta R.T.: 0.008 min
 Response: 6842847
 Conc: 0.92 ng/ml



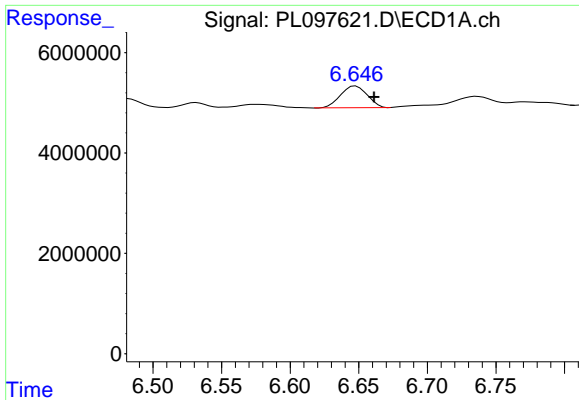
#15 Endosulfan II

R.T.: 0.000 min
 Exp R.T.: 6.741 min
 Response: 0
 Conc: N.D.



#15 Endosulfan II

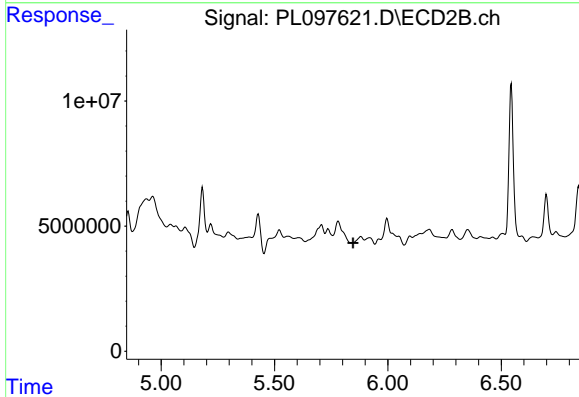
R.T.: 5.996 min
 Delta R.T.: 0.005 min
 Response: 26273560
 Conc: 3.81 ng/ml



#16 4,4'-DDD

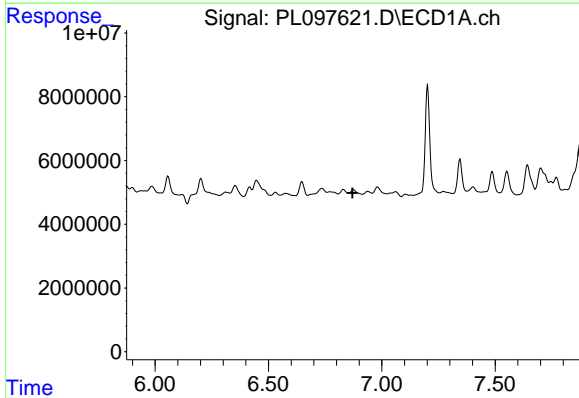
R.T.: 6.648 min
 Delta R.T.: -0.013 min
 Response: 5890689
 Conc: 1.56 ng/ml

Instrument :
 ECD_L
 ClientSampleId :
 TP-2



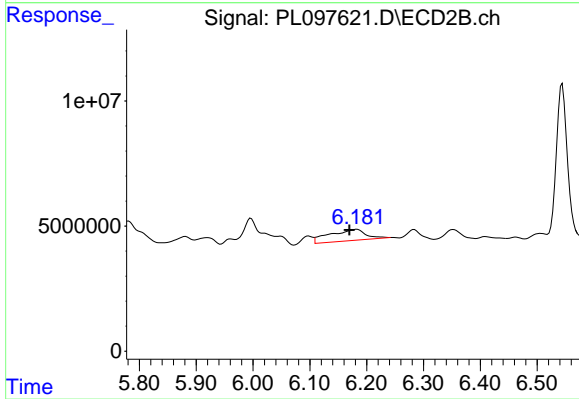
#16 4,4'-DDD

R.T.: 0.000 min
 Exp R.T. : 5.846 min
 Response: 0
 Conc: N.D.



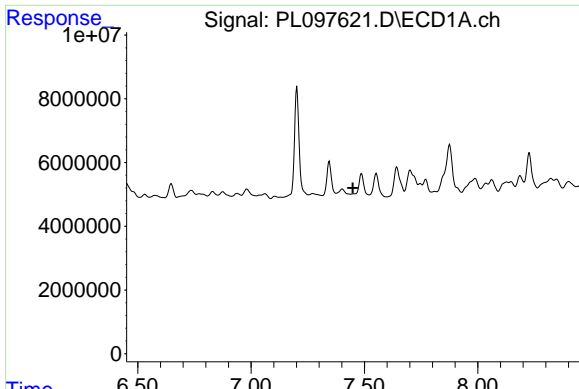
#18 Endrin aldehyde

R.T.: 0.000 min
 Exp R.T. : 6.871 min
 Response: 0
 Conc: N.D.



#18 Endrin aldehyde

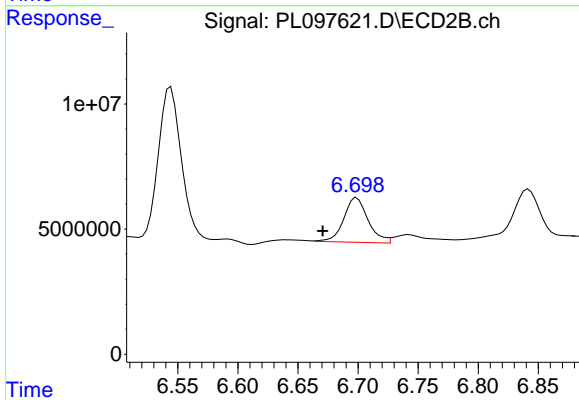
R.T.: 6.183 min
 Delta R.T.: 0.013 min
 Response: 20035539
 Conc: 3.48 ng/ml



#20 Methoxychlor

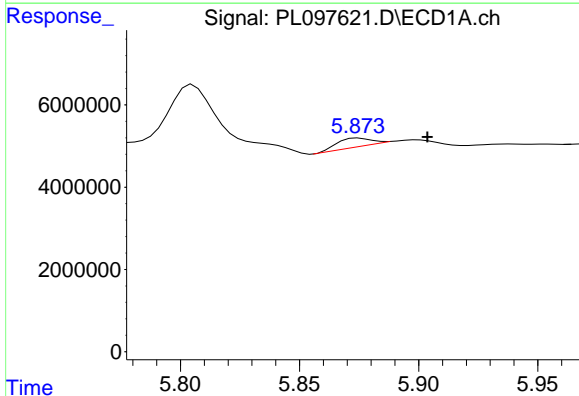
R.T.: 0.000 min
Exp R.T.: 7.448 min
Response: 0
Conc: N.D.

Instrument :
ECD_L
ClientSampleId :
TP-2



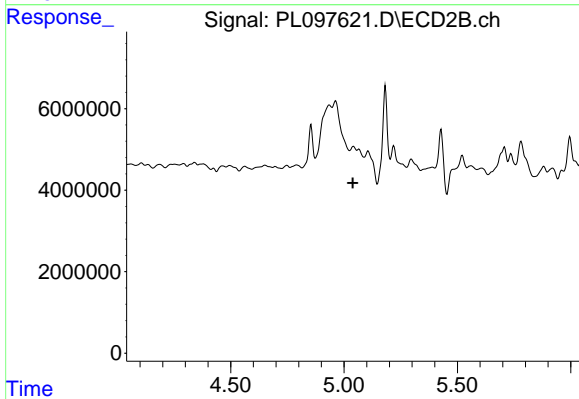
#20 Methoxychlor

R.T.: 6.699 min
Delta R.T.: 0.028 min
Response: 25100265
Conc: 6.89 ng/ml



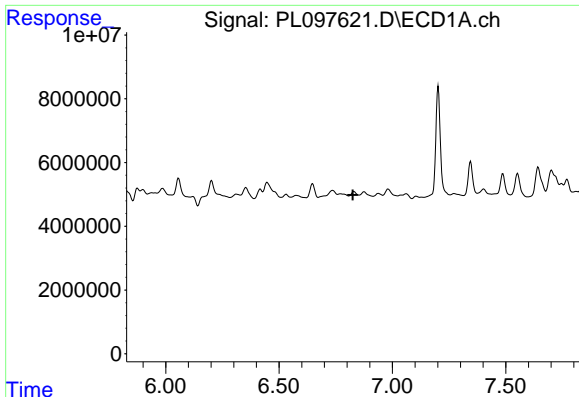
#25 Chlordane-3

R.T.: 5.875 min
Delta R.T.: -0.029 min
Response: 2034582
Conc: 2.49 ng/ml



#25 Chlordane-3

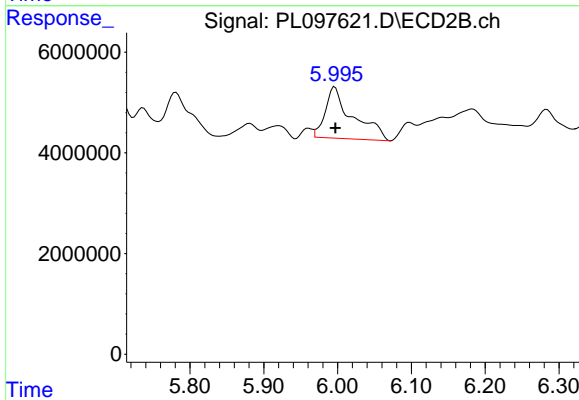
R.T.: 0.000 min
Exp R.T.: 5.039 min
Response: 0
Conc: N.D.



#27 Chlordane-5

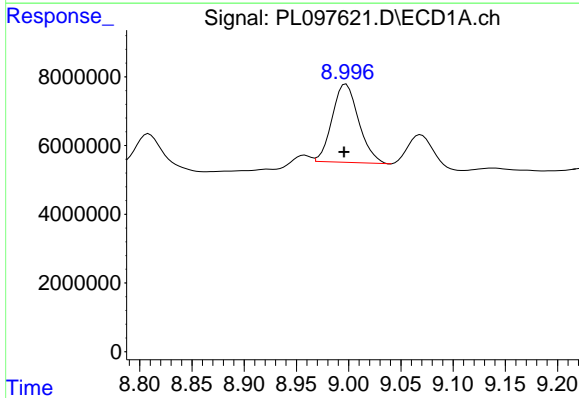
R.T.: 0.000 min
 Exp R.T.: 6.825 min
 Response: 0
 Conc: N.D.

Instrument :
 ECD_L
 ClientSampleId :
 TP-2



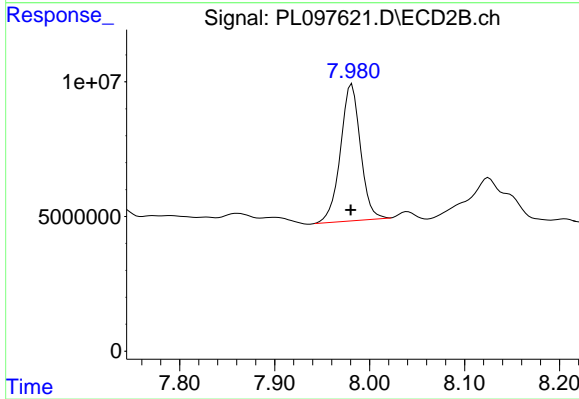
#27 Chlordane-5

R.T.: 5.996 min
 Delta R.T.: 0.000 min
 Response: 26273560
 Conc: 88.73 ng/ml



#28 Decachlorobiphenyl

R.T.: 8.998 min
 Delta R.T.: 0.002 min
 Response: 40267863
 Conc: 13.54 ng/ml



#28 Decachlorobiphenyl

R.T.: 7.981 min
 Delta R.T.: 0.001 min
 Response: 74392501
 Conc: 14.34 ng/ml