

Data Path : Z:\pestpcbsrv\HPCHEM1\ECD\_L\Data\PL101325\  
 Data File : PL097628.D  
 Signal(s) : Signal #1: ECD1A.ch Signal #2: ECD2B.ch  
 Acq On : 13 Oct 2025 16:26  
 Operator : AR\AJ  
 Sample : PB170065BS  
 Misc :  
 ALS Vial : 6 Sample Multiplier: 1

Instrument :  
 ECD\_L  
 ClientSampleId :  
 PB170065BS

Integration File signal 1: autoint1.e  
 Integration File signal 2: autoint2.e  
 Quant Time: Oct 14 02:24:53 2025  
 Quant Method : Z:\pestpcbsrv\HPCHEM1\ECD\_L\methods\PL100725.M  
 Quant Title : GC Extractables  
 QLast Update : Tue Oct 07 16:47:00 2025  
 Response via : Initial Calibration  
 Integrator: ChemStation

Volume Inj. : 1 µl  
 Signal #1 Phase : ZB-MR2 Signal #2 Phase: ZB-MR2  
 Signal #1 Info : 30M x 0.32mm x0.5 Signal #2 Info : 30M x 0.32mm x0.25µm

	Compound	RT#1	RT#2	Resp#1	Resp#2	ng/ml	ng/ml
-----							
System Monitoring Compounds							
1)	SA Tetrachlo...	3.525	2.823	55545664	81751412	13.625	13.432
28)	SA Decachlor...	8.997	7.981	76257269	111.1E6	25.644	21.407
Target Compounds							
2)	A alpha-BHC	3.972	3.328	294.4E6	427.6E6	43.649	43.338
3)	MA gamma-BHC...	4.300	3.659	272.7E6	388.7E6	42.902	42.313
4)	MA Heptachlor	4.890	4.007	241.6E6	340.7E6	37.460	37.062
5)	MB Aldrin	5.229	4.289	251.7E6	360.7E6	41.867	41.595
6)	B beta-BHC	4.487	3.956	113.2E6	161.8E6	43.774	40.680
7)	B delta-BHC	4.733	4.188	261.1E6	377.9E6	42.991	41.833
8)	Heptachlo...	5.649	4.791	241.1E6	319.3E6	41.403	40.429
9)	A Endosulfan I	6.030	5.161	208.1E6	291.0E6	41.862	39.456
10)	B gamma-Chl...	5.902	5.042	243.5E6	344.3E6	44.856	39.609
11)	B alpha-Chl...	5.982	5.106	226.2E6	327.9E6	41.693	39.374
12)	B 4,4'-DDE	6.153	5.295	198.1E6	301.8E6	42.532	39.753
13)	MA Dieldrin	6.302	5.426	217.1E6	328.0E6	41.273	39.665
14)	MA Endrin	6.529	5.701	172.1E6	313.6E6	38.472	42.367
15)	B Endosulfa...	6.742	5.992	191.6E6	262.5E6	39.161	38.014
16)	A 4,4'-DDD	6.662	5.847	176.3E6	251.4E6	46.721	39.407
17)	MA 4,4'-DDT	6.976	6.100	143.1E6	209.2E6	35.298	31.398
18)	B Endrin al...	6.871	6.170	141.8E6	198.4E6	43.261	34.448
19)	B Endosulfa...	7.105	6.394	164.3E6	247.5E6	40.972	37.168
20)	A Methoxychlor	7.450	6.672	68167271	108.4E6	32.632	29.747
21)	B Endrin ke...	7.584	6.898	181.9E6	275.7E6	42.475	34.901
22)	Mirex	8.062	7.087	121.5E6	186.8E6	39.100	34.922
24)	Chlordane-2	5.229f	0.000	251.7E6	0	1115.240	N.D. #
25)	Chlordane-3	5.902	5.042	243.5E6	344.3E6	297.732	375.858 #
26)	Chlordane-4	5.982	5.106	226.2E6	327.9E6	220.571	424.725 #
27)	Chlordane-5	0.000	5.992	0	262.5E6	N.D.	886.431 #

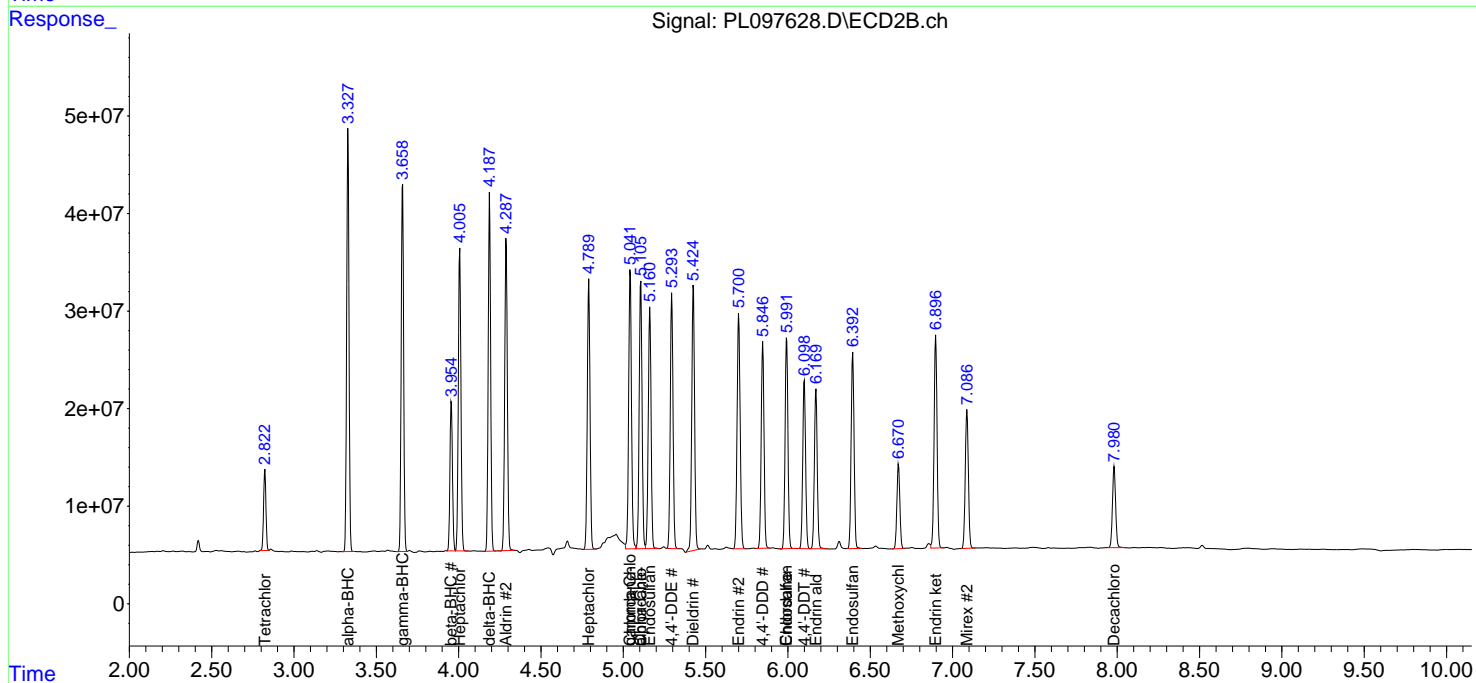
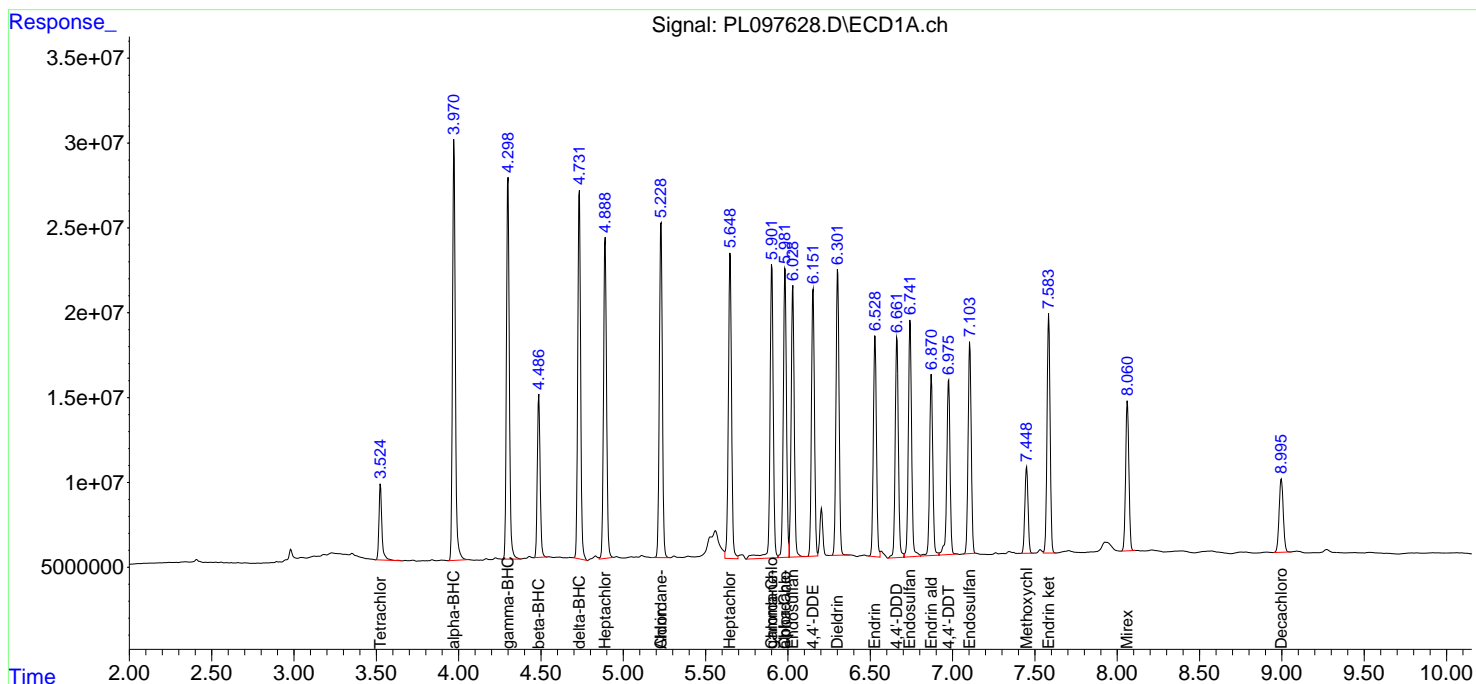
(f)=RT Delta > 1/2 Window (#)=Amounts differ by > 25% (m)=manual int.

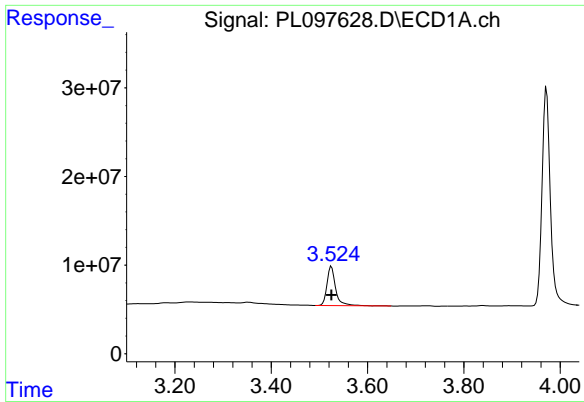
Data Path : Z:\pestpcbsrv\HPCHEM1\ECD\_L\Data\PL101325\  
 Data File : PL097628.D  
 Signal(s) : Signal #1: ECD1A.ch Signal #2: ECD2B.ch  
 Acq On : 13 Oct 2025 16:26  
 Operator : AR\AJ  
 Sample : PB170065BS  
 Misc :  
 ALS Vial : 6 Sample Multiplier: 1

Instrument :  
 ECD\_L  
 ClientSampleId :  
 PB170065BS

Integration File signal 1: autoint1.e  
 Integration File signal 2: autoint2.e  
 Quant Time: Oct 14 02:24:53 2025  
 Quant Method : Z:\pestpcbsrv\HPCHEM1\ECD\_L\methods\PL100725.M  
 Quant Title : GC Extractables  
 QLast Update : Tue Oct 07 16:47:00 2025  
 Response via : Initial Calibration  
 Integrator: ChemStation

Volume Inj. : 1 µl  
 Signal #1 Phase : ZB-MR1 Signal #2 Phase: ZB-MR2  
 Signal #1 Info : 30M x 0.32mm x0.5 Signal #2 Info : 30M x 0.32mm x0.25µm

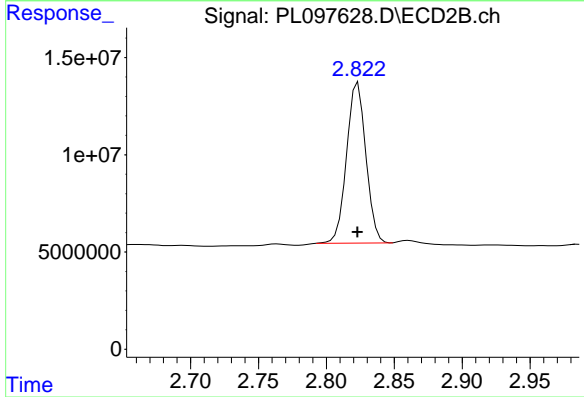




#1 Tetrachloro-m-xylene

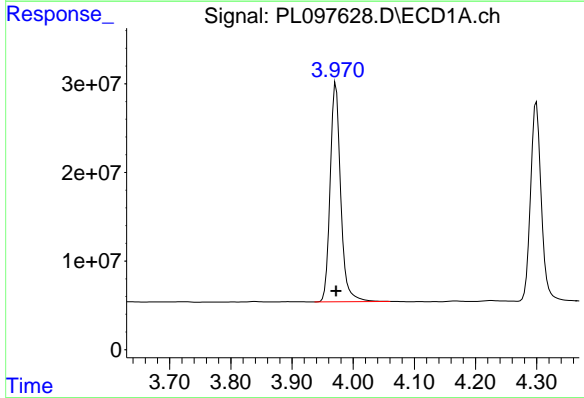
R.T.: 3.525 min  
 Delta R.T.: 0.000 min  
 Response: 55545664  
 Conc: 13.63 ng/ml

Instrument :  
 ECD\_L  
 ClientSampleId :  
 PB170065BS



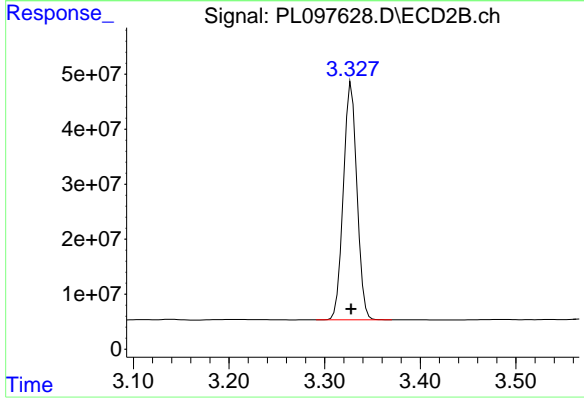
#1 Tetrachloro-m-xylene

R.T.: 2.823 min  
 Delta R.T.: 0.000 min  
 Response: 81751412  
 Conc: 13.43 ng/ml



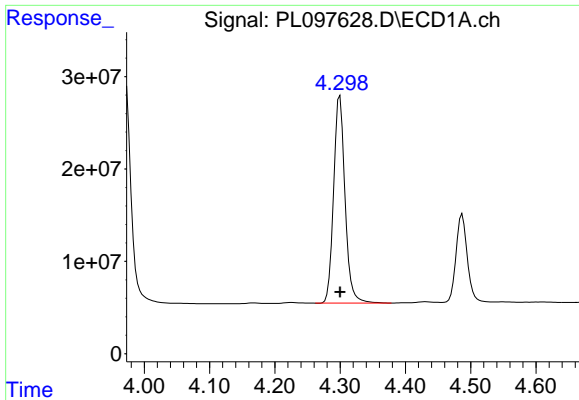
#2 alpha-BHC

R.T.: 3.972 min  
 Delta R.T.: 0.000 min  
 Response: 294442572  
 Conc: 43.65 ng/ml



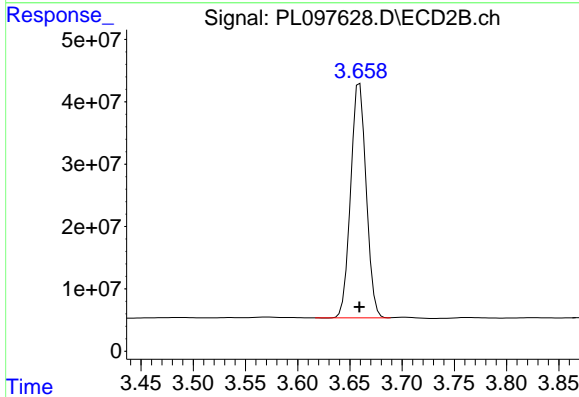
#2 alpha-BHC

R.T.: 3.328 min  
 Delta R.T.: 0.000 min  
 Response: 427615485  
 Conc: 43.34 ng/ml

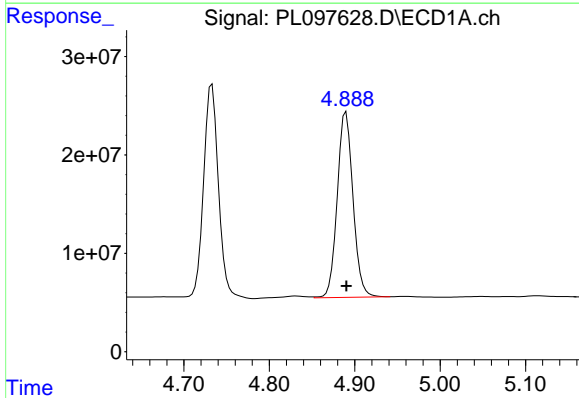


#3 gamma-BHC (Lindane)  
 R.T.: 4.300 min  
 Delta R.T.: 0.000 min  
 Response: 272699894  
 Conc: 42.90 ng/ml

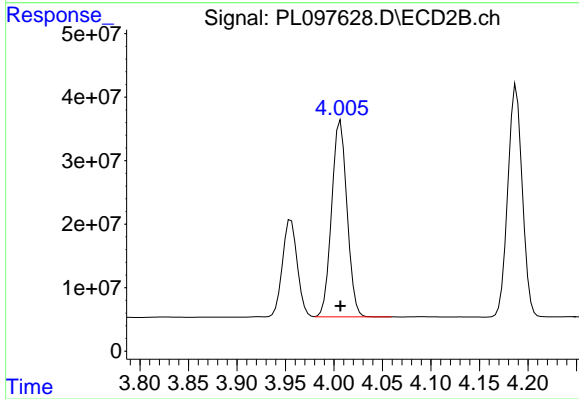
Instrument :  
 ECD\_L  
 ClientSampleId :  
 PB170065BS



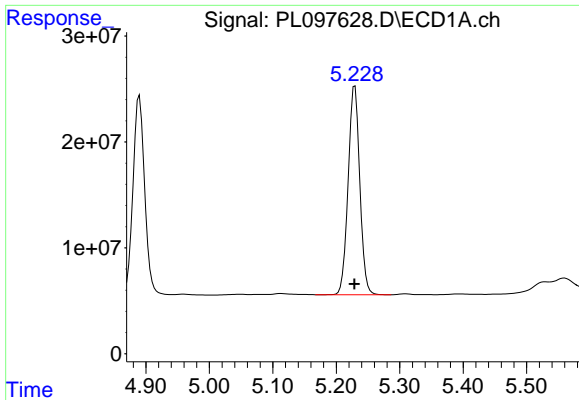
#3 gamma-BHC (Lindane)  
 R.T.: 3.659 min  
 Delta R.T.: 0.000 min  
 Response: 388743753  
 Conc: 42.31 ng/ml



#4 Heptachlor  
 R.T.: 4.890 min  
 Delta R.T.: 0.000 min  
 Response: 241645581  
 Conc: 37.46 ng/ml

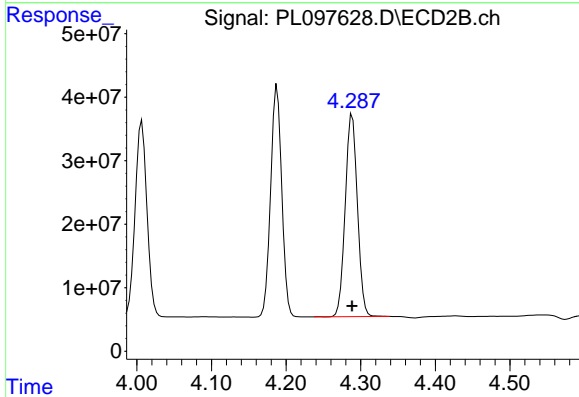


#4 Heptachlor  
 R.T.: 4.007 min  
 Delta R.T.: 0.000 min  
 Response: 340683041  
 Conc: 37.06 ng/ml

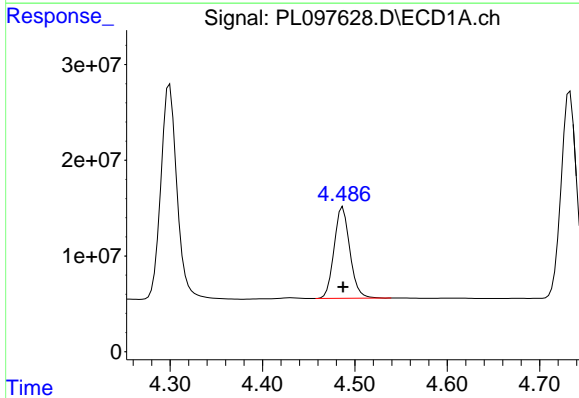


#5 Aldrin  
 R.T.: 5.229 min  
 Delta R.T.: 0.000 min  
 Response: 251733262  
 Conc: 41.87 ng/ml

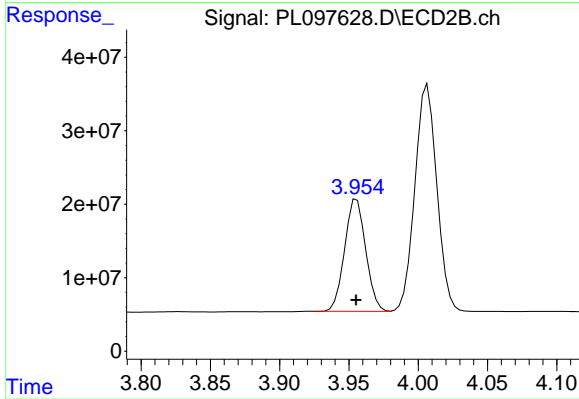
Instrument :  
 ECD\_L  
 ClientSampleId :  
 PB170065BS



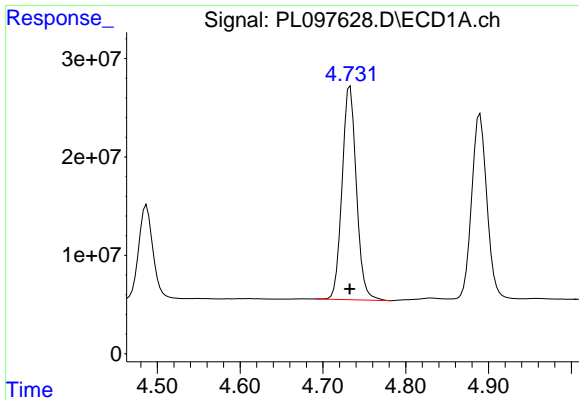
#5 Aldrin  
 R.T.: 4.289 min  
 Delta R.T.: 0.000 min  
 Response: 360703839  
 Conc: 41.59 ng/ml



#6 beta-BHC  
 R.T.: 4.487 min  
 Delta R.T.: 0.000 min  
 Response: 113176003  
 Conc: 43.77 ng/ml

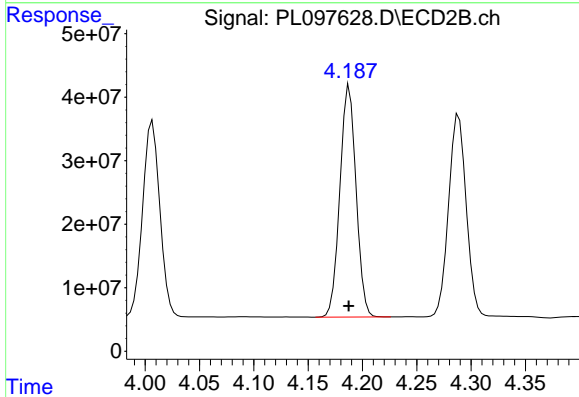


#6 beta-BHC  
 R.T.: 3.956 min  
 Delta R.T.: 0.000 min  
 Response: 161829447  
 Conc: 40.68 ng/ml

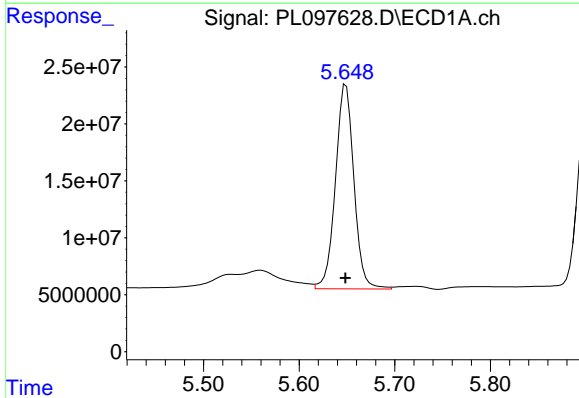


#7 delta-BHC  
 R.T.: 4.733 min  
 Delta R.T.: 0.000 min  
 Response: 261067020  
 Conc: 42.99 ng/ml

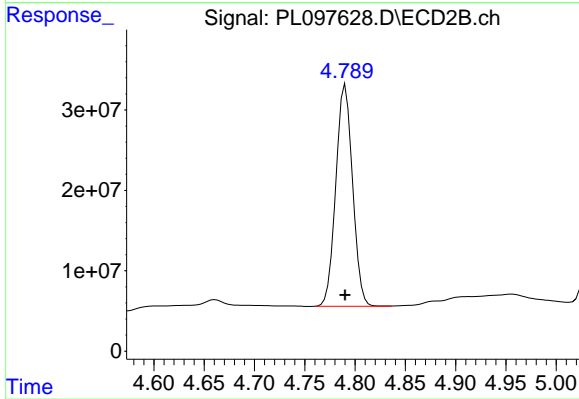
Instrument :  
 ECD\_L  
 ClientSampleId :  
 PB170065BS



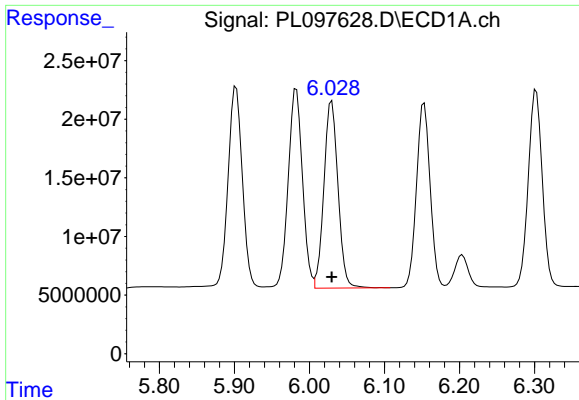
#7 delta-BHC  
 R.T.: 4.188 min  
 Delta R.T.: 0.000 min  
 Response: 377918086  
 Conc: 41.83 ng/ml



#8 Heptachlor epoxide  
 R.T.: 5.649 min  
 Delta R.T.: 0.000 min  
 Response: 241058247  
 Conc: 41.40 ng/ml



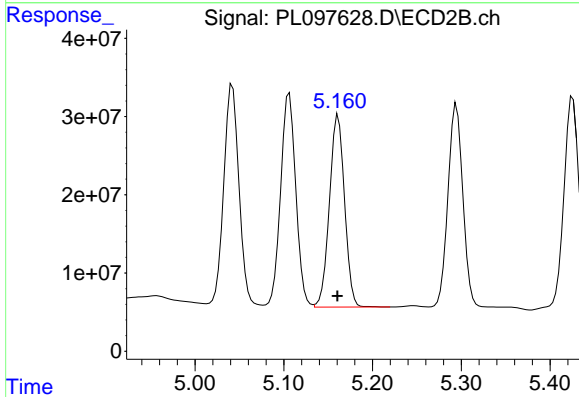
#8 Heptachlor epoxide  
 R.T.: 4.791 min  
 Delta R.T.: 0.000 min  
 Response: 319304788  
 Conc: 40.43 ng/ml



#9 Endosulfan I

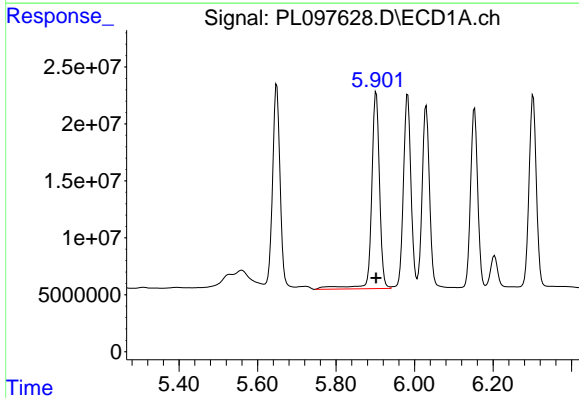
R.T.: 6.030 min  
 Delta R.T.: 0.000 min  
 Response: 208111444  
 Conc: 41.86 ng/ml

Instrument :  
 ECD\_L  
 ClientSampleId :  
 PB170065BS



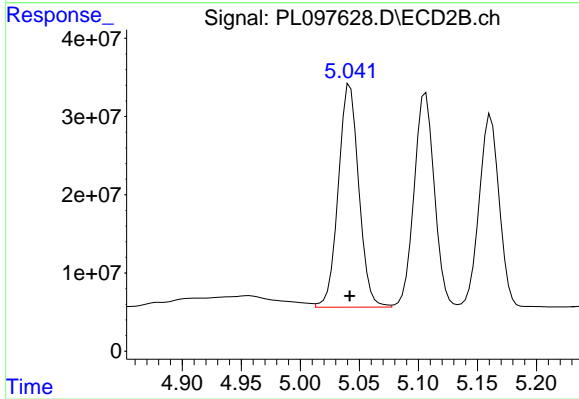
#9 Endosulfan I

R.T.: 5.161 min  
 Delta R.T.: 0.000 min  
 Response: 290965186  
 Conc: 39.46 ng/ml



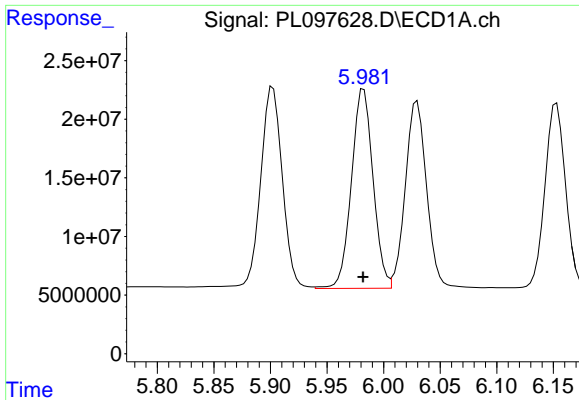
#10 gamma-Chlordane

R.T.: 5.902 min  
 Delta R.T.: 0.000 min  
 Response: 243452679  
 Conc: 44.86 ng/ml



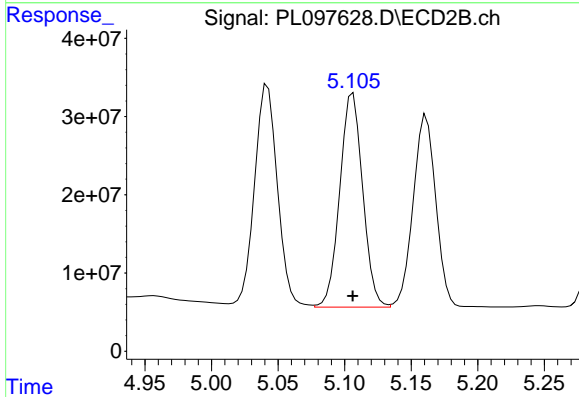
#10 gamma-Chlordane

R.T.: 5.042 min  
 Delta R.T.: 0.000 min  
 Response: 344324049  
 Conc: 39.61 ng/ml

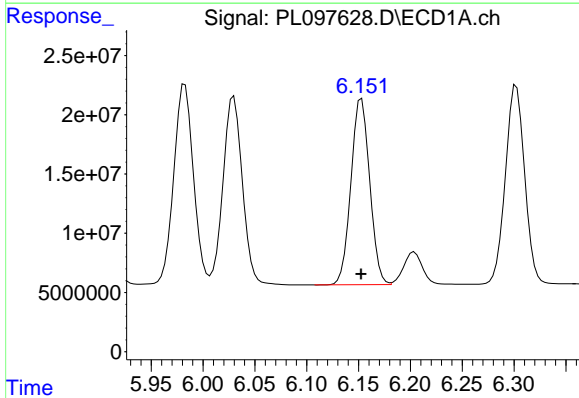


#11 alpha-Chlordane  
 R.T.: 5.982 min  
 Delta R.T.: 0.000 min  
 Response: 226246081  
 Conc: 41.69 ng/ml

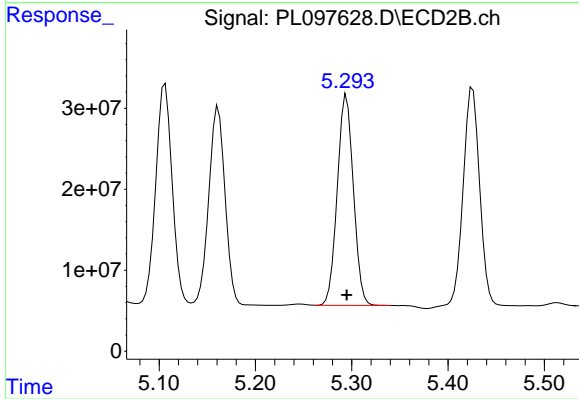
Instrument :  
 ECD\_L  
 ClientSampleId :  
 PB170065BS



#11 alpha-Chlordane  
 R.T.: 5.106 min  
 Delta R.T.: 0.000 min  
 Response: 327880414  
 Conc: 39.37 ng/ml

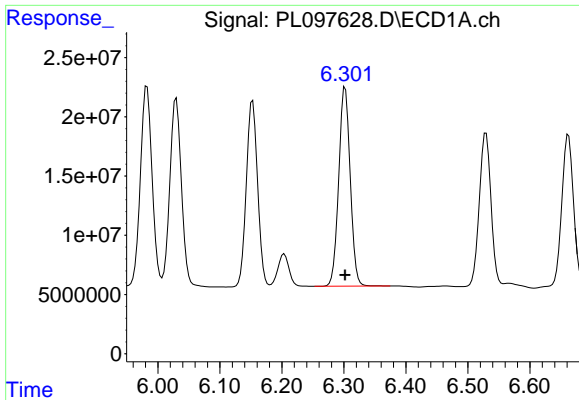


#12 4,4'-DDE  
 R.T.: 6.153 min  
 Delta R.T.: 0.000 min  
 Response: 198079487  
 Conc: 42.53 ng/ml



#12 4,4'-DDE  
 R.T.: 5.295 min  
 Delta R.T.: 0.000 min  
 Response: 301818788  
 Conc: 39.75 ng/ml

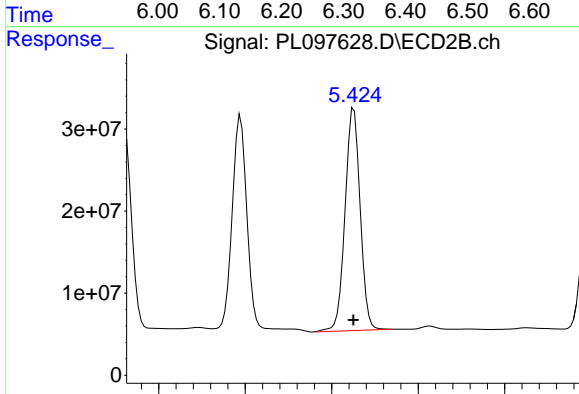




#13 Dieldrin

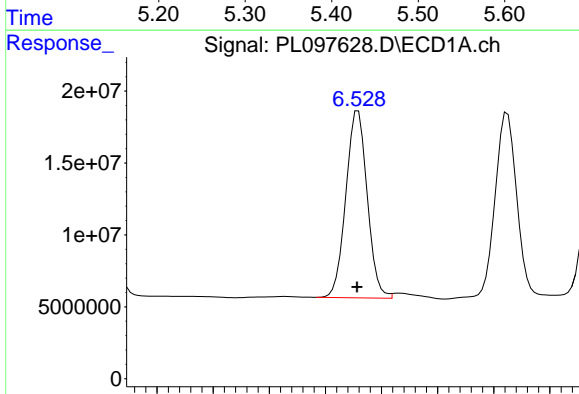
R.T.: 6.302 min  
 Delta R.T.: 0.000 min  
 Response: 217117175  
 Conc: 41.27 ng/ml

Instrument :  
 ECD\_L  
 ClientSampleId :  
 PB170065BS



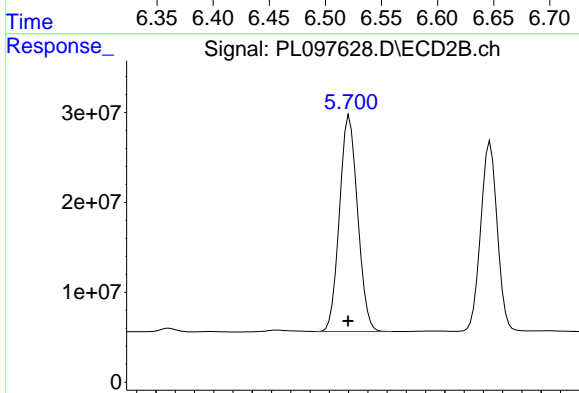
#13 Dieldrin

R.T.: 5.426 min  
 Delta R.T.: 0.000 min  
 Response: 327962775  
 Conc: 39.67 ng/ml



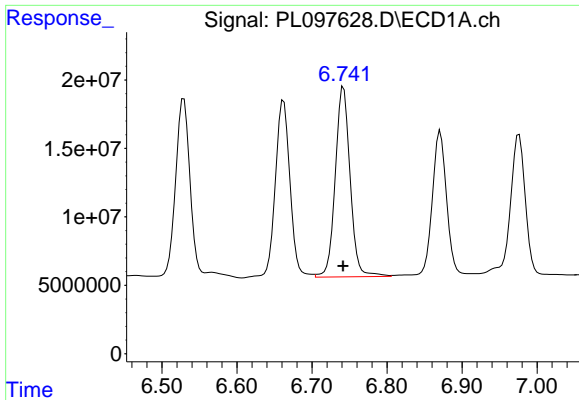
#14 Endrin

R.T.: 6.529 min  
 Delta R.T.: 0.000 min  
 Response: 172135217  
 Conc: 38.47 ng/ml



#14 Endrin

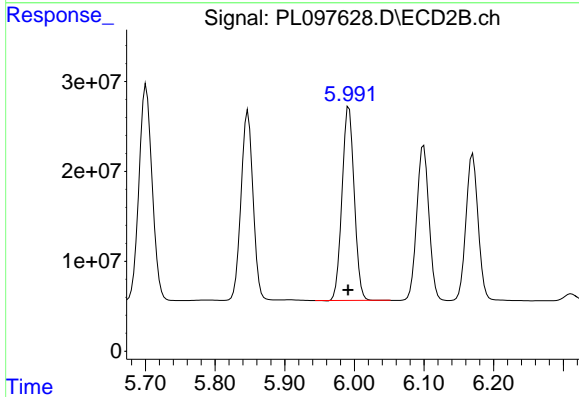
R.T.: 5.701 min  
 Delta R.T.: 0.002 min  
 Response: 313578767  
 Conc: 42.37 ng/ml



#15 Endosulfan II

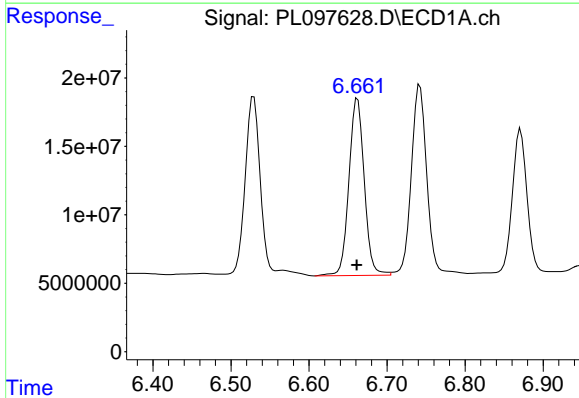
R.T.: 6.742 min  
 Delta R.T.: 0.000 min  
 Response: 191581492  
 Conc: 39.16 ng/ml

Instrument :  
 ECD\_L  
 ClientSampleId :  
 PB170065BS



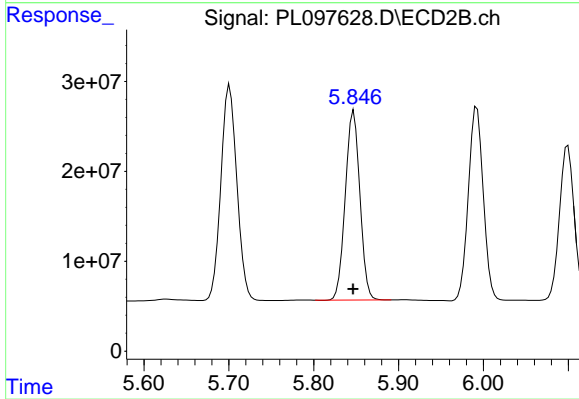
#15 Endosulfan II

R.T.: 5.992 min  
 Delta R.T.: 0.000 min  
 Response: 262488837  
 Conc: 38.01 ng/ml



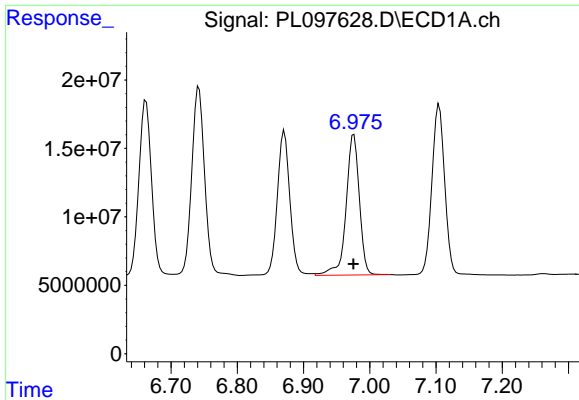
#16 4,4'-DDD

R.T.: 6.662 min  
 Delta R.T.: 0.001 min  
 Response: 176300608  
 Conc: 46.72 ng/ml



#16 4,4'-DDD

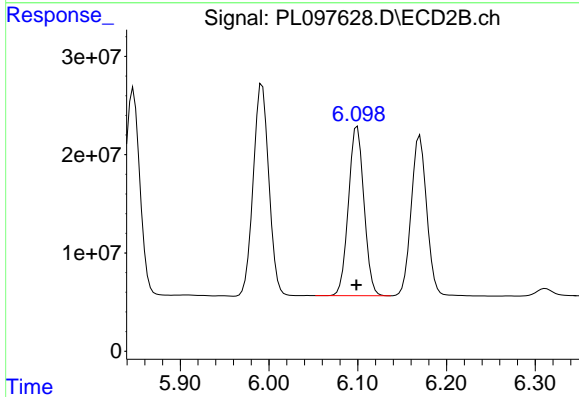
R.T.: 5.847 min  
 Delta R.T.: 0.000 min  
 Response: 251373849  
 Conc: 39.41 ng/ml



#17 4,4'-DDT

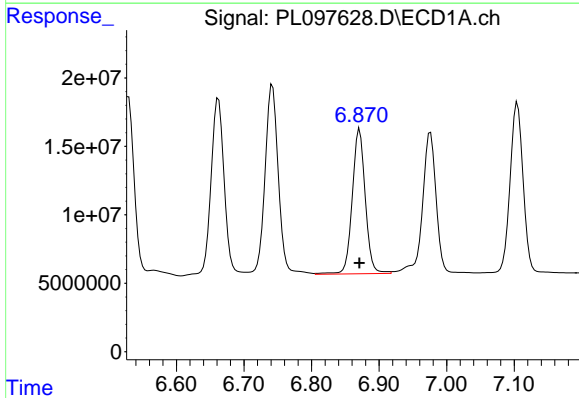
R.T.: 6.976 min  
 Delta R.T.: 0.000 min  
 Response: 143124808  
 Conc: 35.30 ng/ml

Instrument :  
 ECD\_L  
 ClientSampleId :  
 PB170065BS



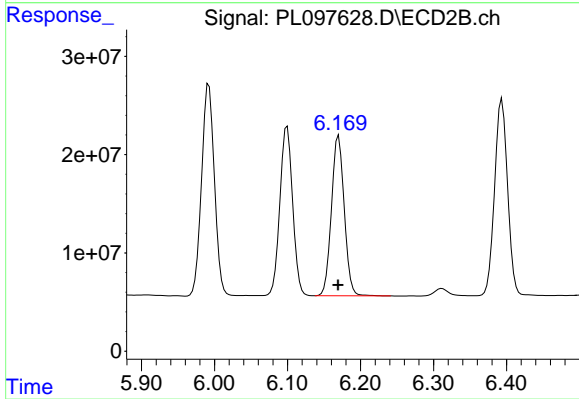
#17 4,4'-DDT

R.T.: 6.100 min  
 Delta R.T.: 0.000 min  
 Response: 209220528  
 Conc: 31.40 ng/ml



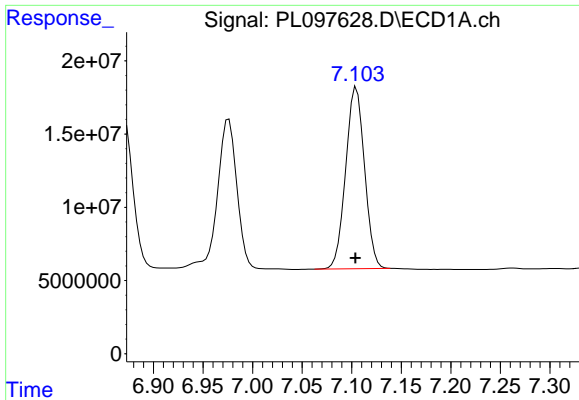
#18 Endrin aldehyde

R.T.: 6.871 min  
 Delta R.T.: 0.000 min  
 Response: 141754749  
 Conc: 43.26 ng/ml



#18 Endrin aldehyde

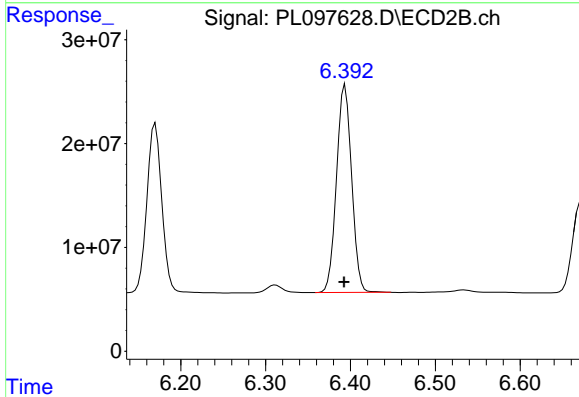
R.T.: 6.170 min  
 Delta R.T.: 0.000 min  
 Response: 198371110  
 Conc: 34.45 ng/ml



#19 Endosulfan Sulfate

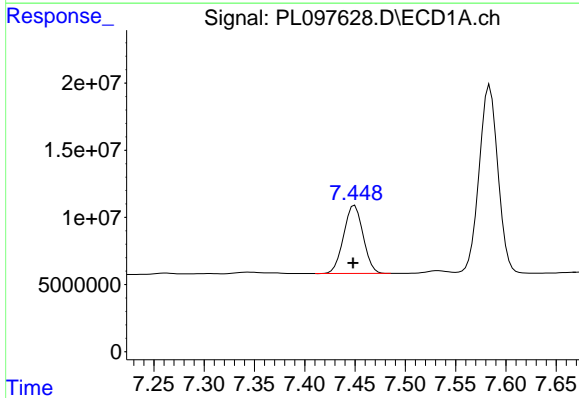
R.T.: 7.105 min  
 Delta R.T.: 0.000 min  
 Response: 164294302  
 Conc: 40.97 ng/ml

Instrument :  
 ECD\_L  
 ClientSampleId :  
 PB170065BS



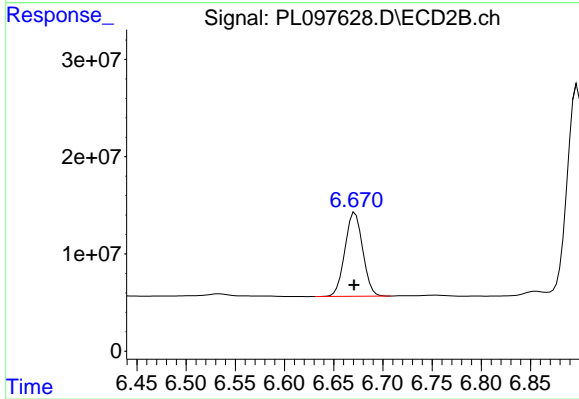
#19 Endosulfan Sulfate

R.T.: 6.394 min  
 Delta R.T.: 0.001 min  
 Response: 247455787  
 Conc: 37.17 ng/ml



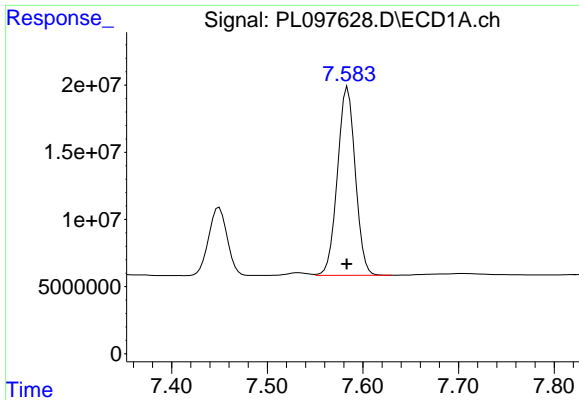
#20 Methoxychlor

R.T.: 7.450 min  
 Delta R.T.: 0.002 min  
 Response: 68167271  
 Conc: 32.63 ng/ml



#20 Methoxychlor

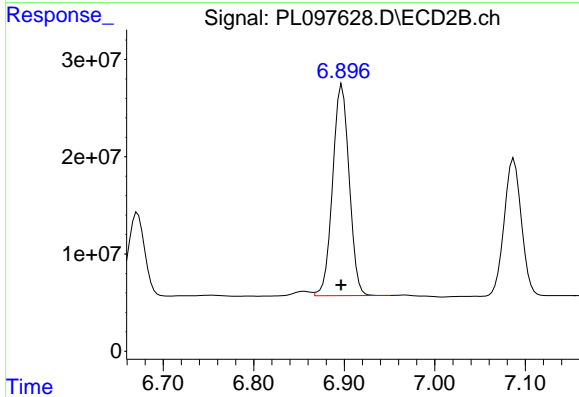
R.T.: 6.672 min  
 Delta R.T.: 0.001 min  
 Response: 108434482  
 Conc: 29.75 ng/ml



#21 Endrin ketone

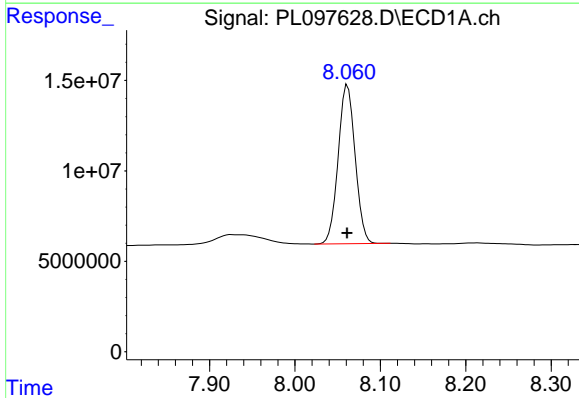
R.T.: 7.584 min  
 Delta R.T.: 0.001 min  
 Response: 181865070  
 Conc: 42.47 ng/ml

Instrument :  
 ECD\_L  
 ClientSampleId :  
 PB170065BS



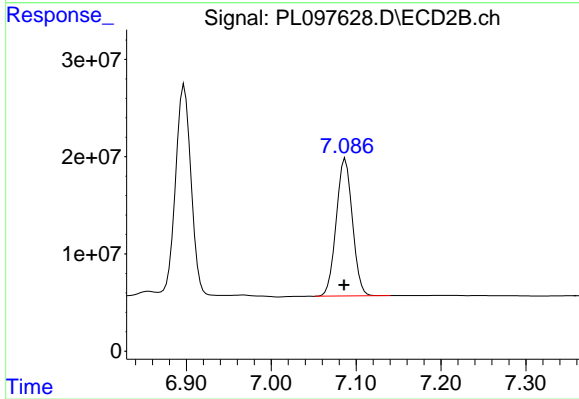
#21 Endrin ketone

R.T.: 6.898 min  
 Delta R.T.: 0.001 min  
 Response: 275712673  
 Conc: 34.90 ng/ml



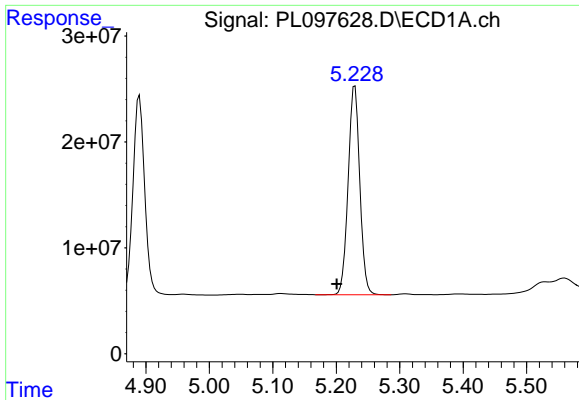
#22 Mirex

R.T.: 8.062 min  
 Delta R.T.: 0.000 min  
 Response: 121500500  
 Conc: 39.10 ng/ml



#22 Mirex

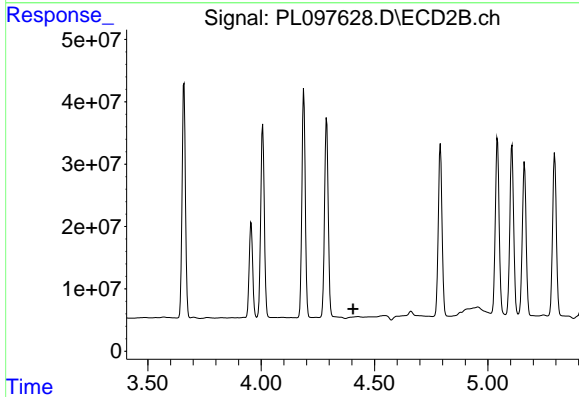
R.T.: 7.087 min  
 Delta R.T.: 0.002 min  
 Response: 186824713  
 Conc: 34.92 ng/ml



#24 Chlordane-2

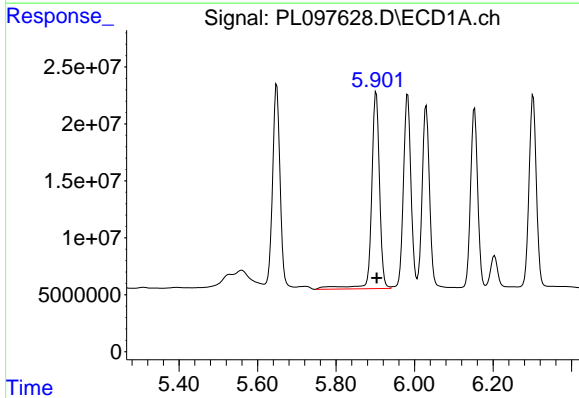
R.T.: 5.229 min  
 Delta R.T.: 0.029 min  
 Response: 251733262  
 Conc: 1115.24 ng/m

Instrument :  
 ECD\_L  
 ClientSampleId :  
 PB170065BS



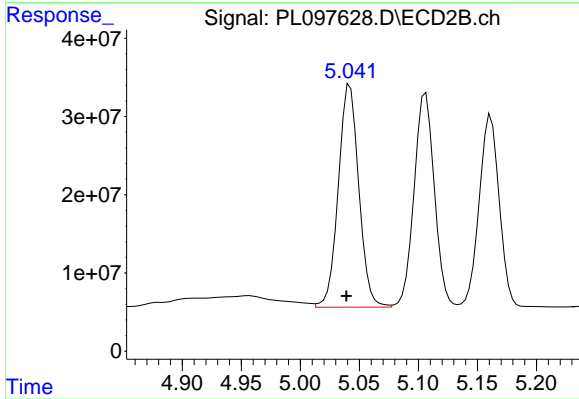
#24 Chlordane-2

R.T.: 0.000 min  
 Exp R.T. : 4.406 min  
 Response: 0  
 Conc: N.D.



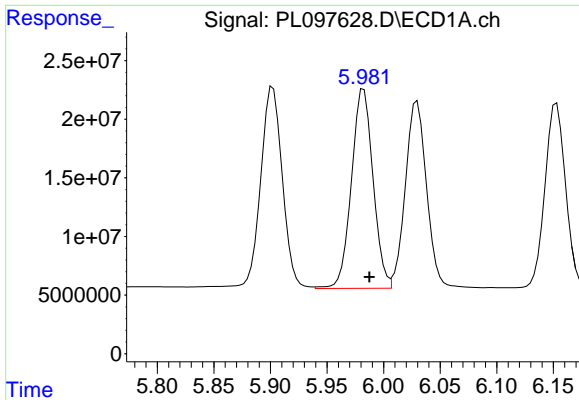
#25 Chlordane-3

R.T.: 5.902 min  
 Delta R.T.: -0.001 min  
 Response: 243452679  
 Conc: 297.73 ng/ml



#25 Chlordane-3

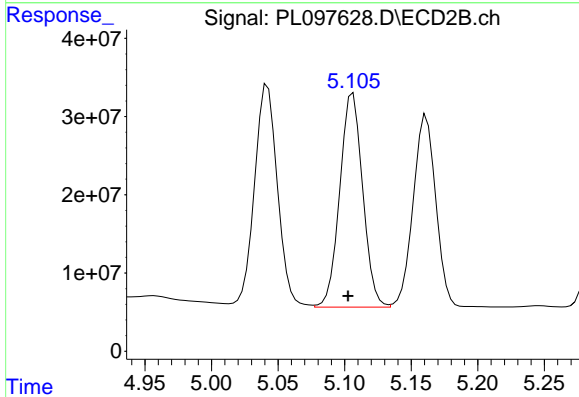
R.T.: 5.042 min  
 Delta R.T.: 0.003 min  
 Response: 344324049  
 Conc: 375.86 ng/ml



#26 Chlordane-4

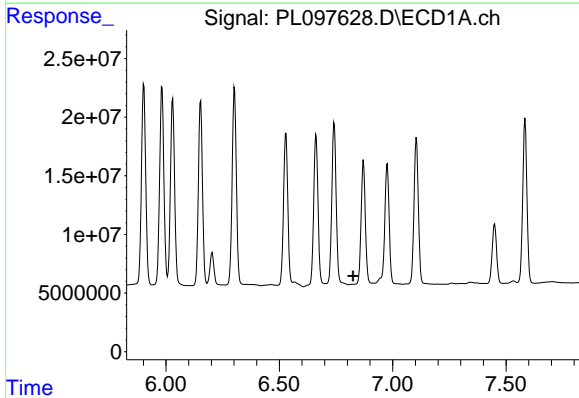
R.T.: 5.982 min  
 Delta R.T.: -0.005 min  
 Response: 226246081  
 Conc: 220.57 ng/ml

Instrument :  
 ECD\_L  
 ClientSampleId :  
 PB170065BS



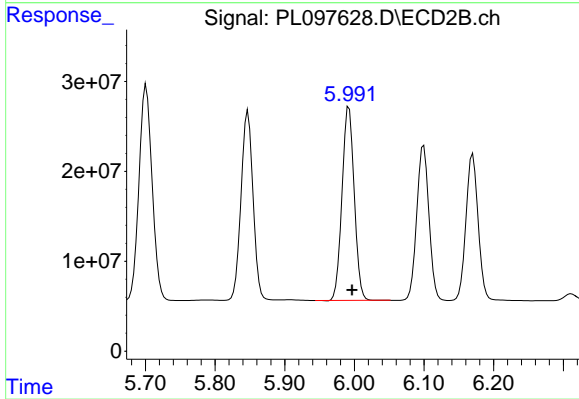
#26 Chlordane-4

R.T.: 5.106 min  
 Delta R.T.: 0.004 min  
 Response: 327880414  
 Conc: 424.73 ng/ml



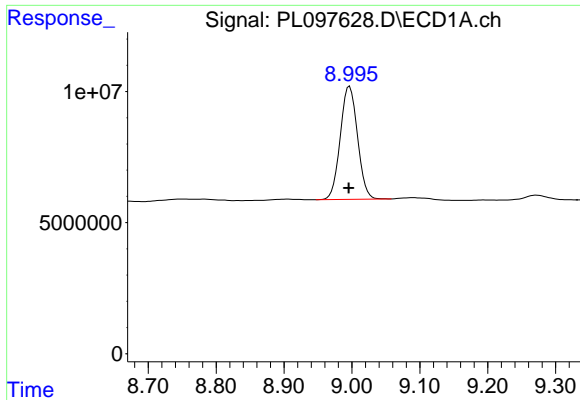
#27 Chlordane-5

R.T.: 0.000 min  
 Exp R.T. : 6.825 min  
 Response: 0  
 Conc: N.D.



#27 Chlordane-5

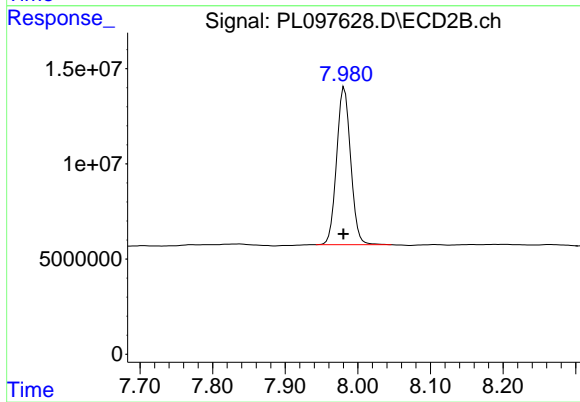
R.T.: 5.992 min  
 Delta R.T.: -0.005 min  
 Response: 262488837  
 Conc: 886.43 ng/ml



#28 Decachlorobiphenyl

R.T.: 8.997 min  
Delta R.T.: 0.001 min  
Response: 76257269  
Conc: 25.64 ng/ml

Instrument :  
ECD\_L  
ClientSampleId :  
PB170065BS



#28 Decachlorobiphenyl

R.T.: 7.981 min  
Delta R.T.: 0.001 min  
Response: 111083786  
Conc: 21.41 ng/ml