

Data Path : Z:\pestpcbsrv\HPCHEM1\ECD_L\Data\PL101325\
 Data File : PL097634.D
 Signal(s) : Signal #1: ECD1A.ch Signal #2: ECD2B.ch
 Acq On : 13 Oct 2025 18:01
 Operator : AR\AJ
 Sample : PSTDCCC050
 Misc :
 ALS Vial : 4 Sample Multiplier: 1

Instrument :
 ECD_L
 ClientSampleId :
 PSTDCCC050

Integration File signal 1: autoint1.e
 Integration File signal 2: autoint2.e
 Quant Time: Oct 14 03:15:21 2025
 Quant Method : Z:\pestpcbsrv\HPCHEM1\ECD_L\methods\PL100725.M
 Quant Title : GC Extractables
 QLast Update : Tue Oct 07 16:47:00 2025
 Response via : Initial Calibration
 Integrator: ChemStation

Volume Inj. : 1 µl
 Signal #1 Phase : ZB-MR2 Signal #2 Phase: ZB-MR2
 Signal #1 Info : 30M x 0.32mm x0.5 Signal #2 Info : 30M x 0.32mm x0.25µm

	Compound	RT#1	RT#2	Resp#1	Resp#2	ng/ml	ng/ml

System Monitoring Compounds							
1)	SA Tetrachlo...	3.525	2.823	215.2E6	307.5E6	52.789	50.526
28)	SA Decachlor...	8.997	7.981	150.6E6	229.0E6	50.641	44.134
Target Compounds							
2)	A alpha-BHC	3.971	3.327	359.8E6	508.8E6	53.341	51.561
3)	MA gamma-BHC...	4.299	3.659	333.9E6	463.0E6	52.531	50.399
4)	MA Heptachlor	4.890	4.006	278.2E6	387.6E6	43.131	42.168
5)	MB Aldrin	5.229	4.289	312.5E6	437.4E6	51.976	50.437
6)	B beta-BHC	4.487	3.955	136.9E6	194.4E6	52.950	48.876
7)	B delta-BHC	4.733	4.187	323.7E6	459.6E6	53.302	50.873
8)	Heptachlo...	5.648	4.790	289.0E6	389.5E6	49.631	49.322
9)	A Endosulfan I	6.030	5.161	257.5E6	364.8E6	51.800	49.465
10)	B gamma-Chl...	5.902	5.042	299.6E6	428.2E6	55.206	49.256
11)	B alpha-Chl...	5.982	5.106	281.3E6	405.9E6	51.846	48.741
12)	B 4,4'-DDE	6.153	5.295	249.0E6	372.2E6	53.457	49.017
13)	MA Dieldrin	6.302	5.425	279.4E6	405.6E6	53.111	49.058
14)	MA Endrin	6.528	5.700	212.2E6	309.8E6	47.419	41.856
15)	B Endosulfa...	6.742	5.992	228.5E6	337.7E6	46.712	48.901
16)	A 4,4'-DDD	6.662	5.847	223.2E6	340.3E6	59.153	53.355
17)	MA 4,4'-DDT	6.976	6.099	157.0E6	230.5E6	38.727	34.595
18)	B Endrin al...	6.871	6.170	166.9E6	247.1E6	50.922	42.904
19)	B Endosulfa...	7.105	6.394	203.8E6	321.8E6	50.818	48.328
20)	A Methoxychlor	7.449	6.671	72877457	122.7E6	34.886	33.656
21)	B Endrin ke...	7.584	6.897	228.4E6	365.9E6	53.343	46.314
22)	Mirex	8.062	7.087	148.9E6	243.9E6	47.906	45.584
24)	Chlordane-2	5.229f	0.000	312.5E6	0	1384.515	N.D. #
25)	Chlordane-3	5.902	5.042	299.6E6	428.2E6	366.429	467.410 #
26)	Chlordane-4	5.982	5.106	281.3E6	405.9E6	274.283	525.758 #
27)	Chlordane-5	0.000	5.992	0	337.7E6	N.D.	1140.283 #

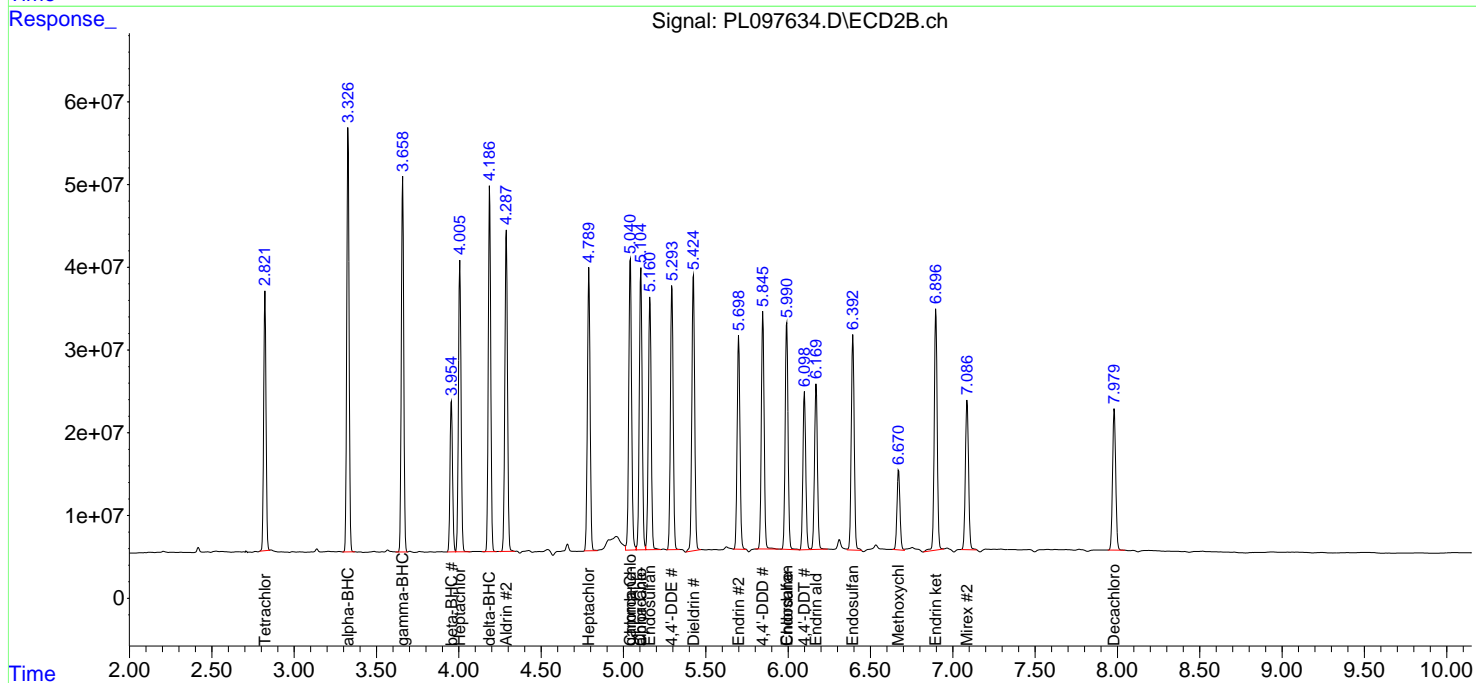
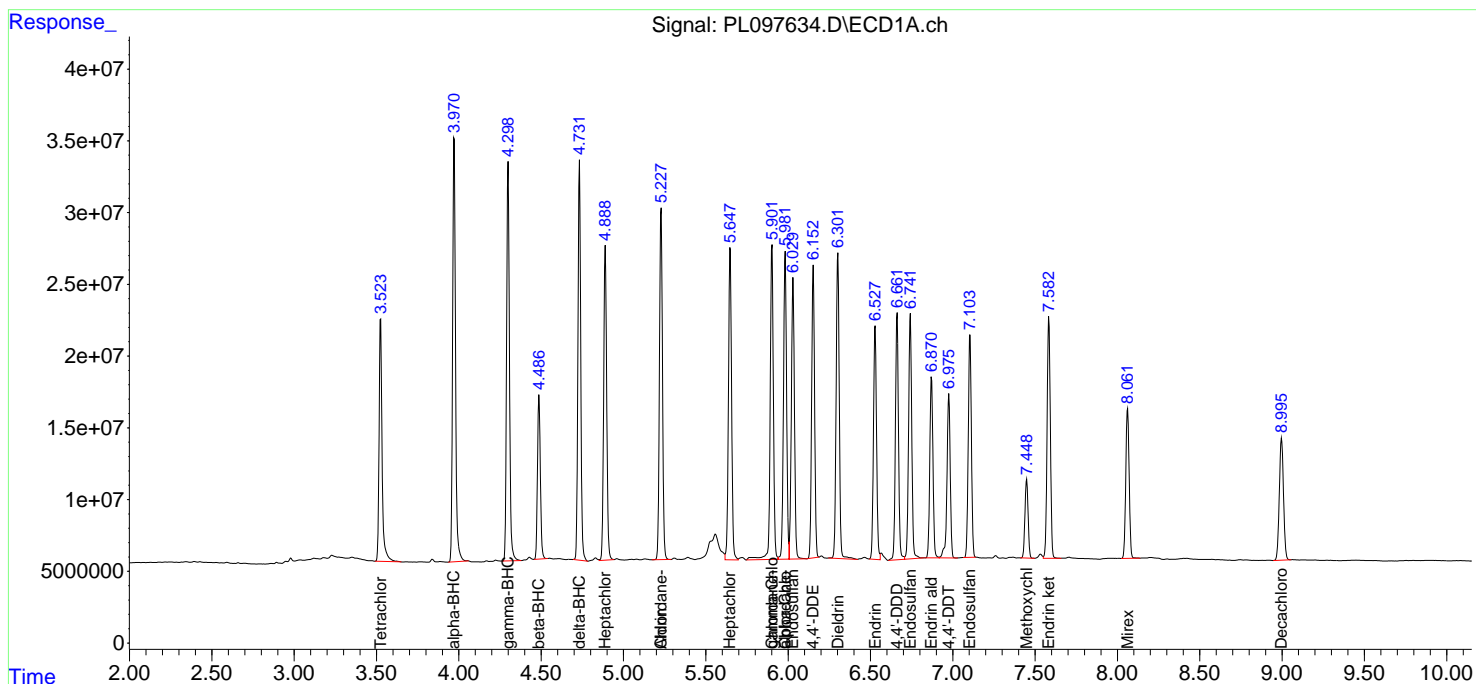
(f)=RT Delta > 1/2 Window (#)=Amounts differ by > 25% (m)=manual int.

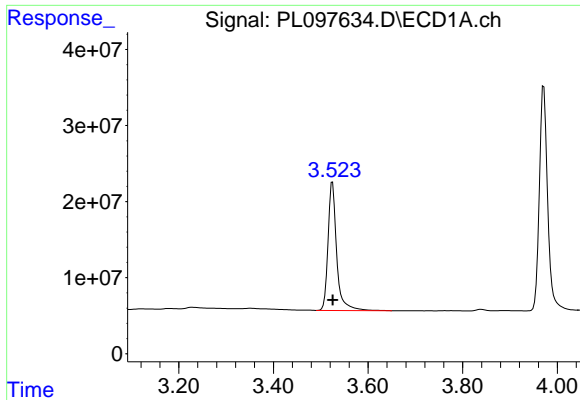
Data Path : Z:\pestpcbsrv\HPCHEM1\ECD_L\Data\PL101325\
 Data File : PL097634.D
 Signal(s) : Signal #1: ECD1A.ch Signal #2: ECD2B.ch
 Acq On : 13 Oct 2025 18:01
 Operator : AR\AJ
 Sample : PSTDCCC050
 Misc :
 ALS Vial : 4 Sample Multiplier: 1

Instrument :
 ECD_L
 ClientSampleId :
 PSTDCCC050

Integration File signal 1: autoint1.e
 Integration File signal 2: autoint2.e
 Quant Time: Oct 14 03:15:21 2025
 Quant Method : Z:\pestpcbsrv\HPCHEM1\ECD_L\methods\PL100725.M
 Quant Title : GC Extractables
 QLast Update : Tue Oct 07 16:47:00 2025
 Response via : Initial Calibration
 Integrator: ChemStation

Volume Inj. : 1 µl
 Signal #1 Phase : ZB-MR1 Signal #2 Phase: ZB-MR2
 Signal #1 Info : 30M x 0.32mm x0.5 Signal #2 Info : 30M x 0.32mm x0.25µm

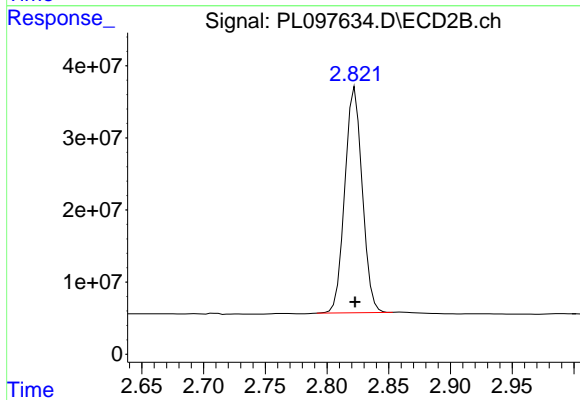




#1 Tetrachloro-m-xylene

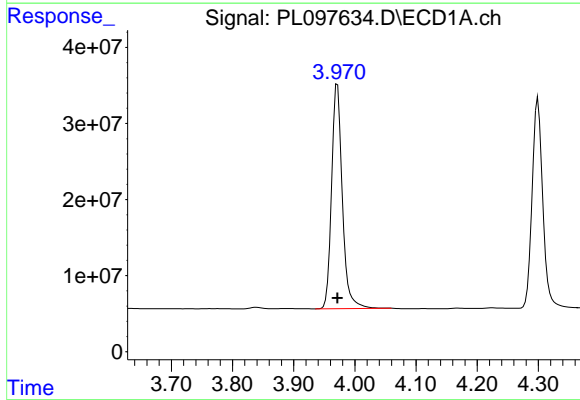
R.T.: 3.525 min
 Delta R.T.: 0.000 min
 Response: 215207555
 Conc: 52.79 ng/ml

Instrument :
 ECD_L
 ClientSampleId :
 PSTDCCC050



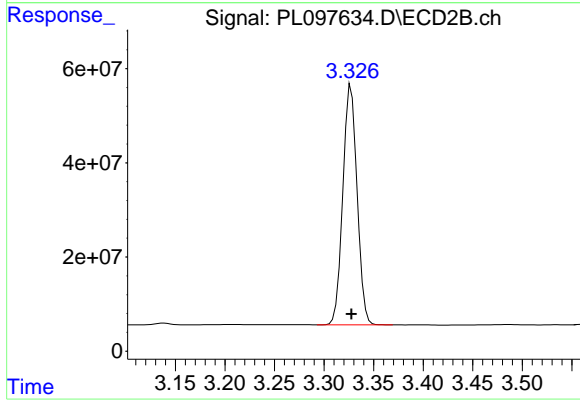
#1 Tetrachloro-m-xylene

R.T.: 2.823 min
 Delta R.T.: 0.000 min
 Response: 307519938
 Conc: 50.53 ng/ml



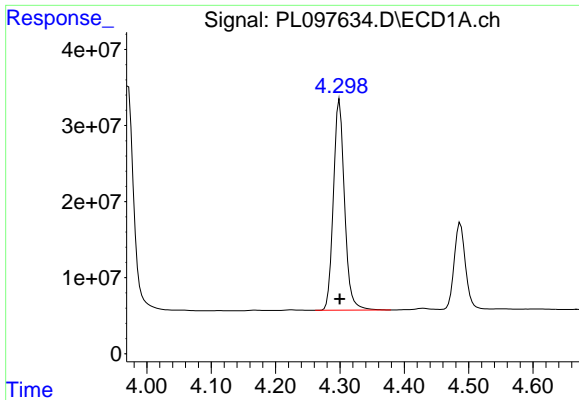
#2 alpha-BHC

R.T.: 3.971 min
 Delta R.T.: 0.000 min
 Response: 359818632
 Conc: 53.34 ng/ml



#2 alpha-BHC

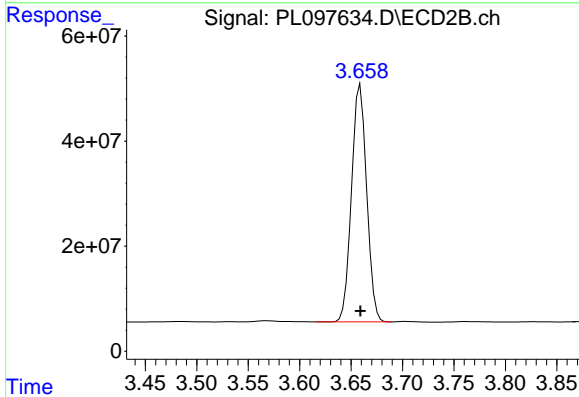
R.T.: 3.327 min
 Delta R.T.: 0.000 min
 Response: 508753119
 Conc: 51.56 ng/ml



#3 gamma-BHC (Lindane)

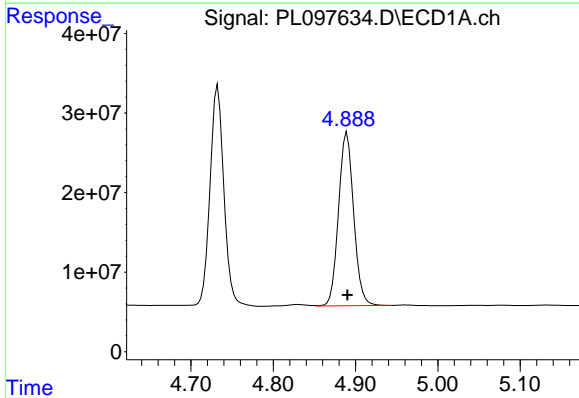
R.T.: 4.299 min
 Delta R.T.: 0.000 min
 Response: 333903629
 Conc: 52.53 ng/ml

Instrument :
 ECD_L
 ClientSampleId :
 PSTDCCC050



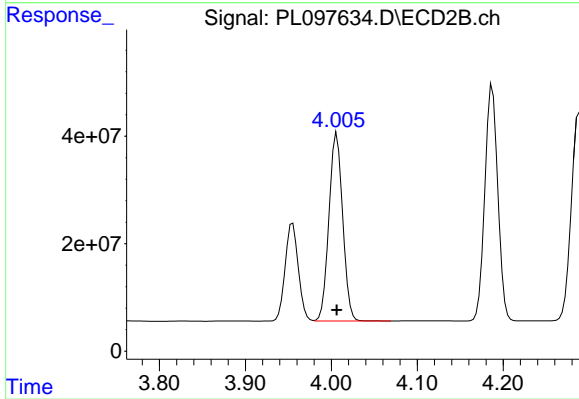
#3 gamma-BHC (Lindane)

R.T.: 3.659 min
 Delta R.T.: 0.000 min
 Response: 463026203
 Conc: 50.40 ng/ml



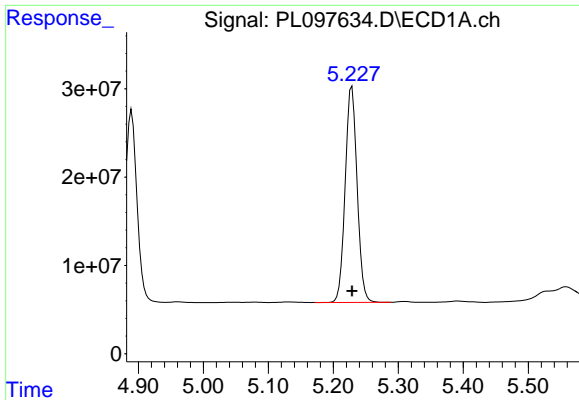
#4 Heptachlor

R.T.: 4.890 min
 Delta R.T.: 0.000 min
 Response: 278222801
 Conc: 43.13 ng/ml



#4 Heptachlor

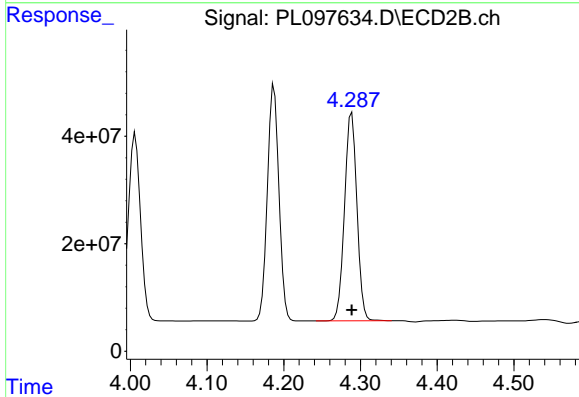
R.T.: 4.006 min
 Delta R.T.: 0.000 min
 Response: 387617466
 Conc: 42.17 ng/ml



#5 Aldrin

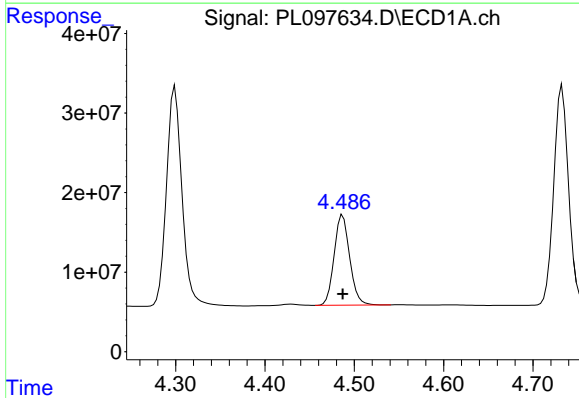
R.T.: 5.229 min
 Delta R.T.: 0.000 min
 Response: 312514278
 Conc: 51.98 ng/ml

Instrument :
 ECD_L
 ClientSampleId :
 PSTDCCC050



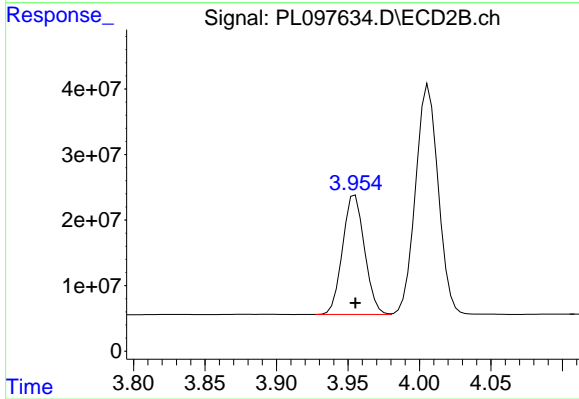
#5 Aldrin

R.T.: 4.289 min
 Delta R.T.: 0.000 min
 Response: 437380205
 Conc: 50.44 ng/ml



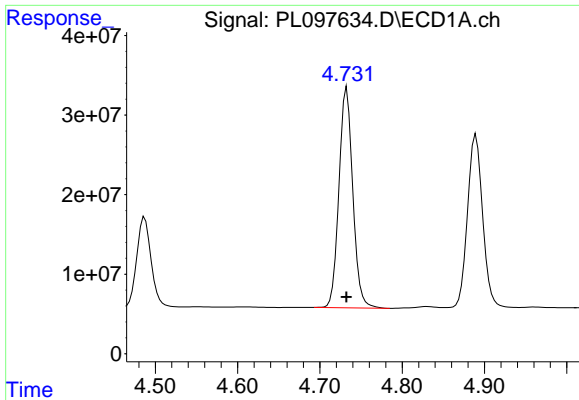
#6 beta-BHC

R.T.: 4.487 min
 Delta R.T.: 0.000 min
 Response: 136901573
 Conc: 52.95 ng/ml



#6 beta-BHC

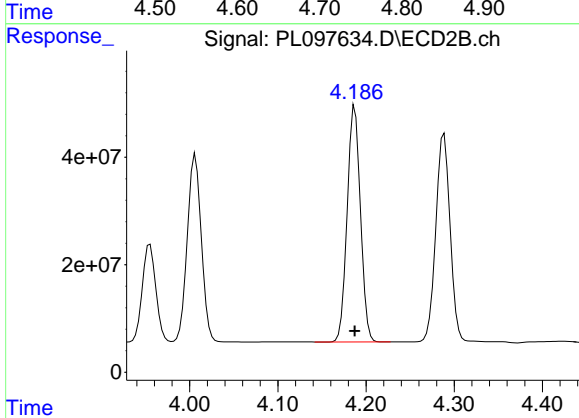
R.T.: 3.955 min
 Delta R.T.: 0.000 min
 Response: 194435406
 Conc: 48.88 ng/ml



#7 delta-BHC

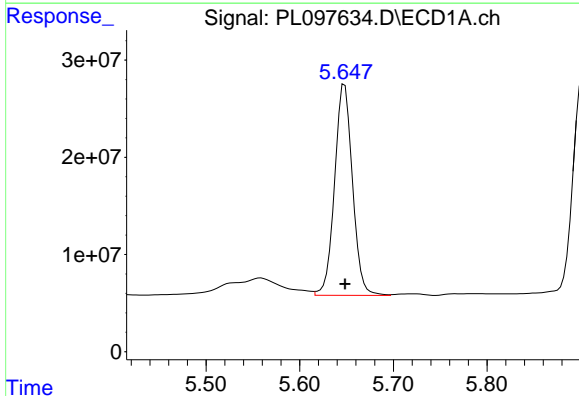
R.T.: 4.733 min
 Delta R.T.: 0.000 min
 Response: 323682430
 Conc: 53.30 ng/ml

Instrument :
 ECD_L
 ClientSampleId :
 PSTDCCC050



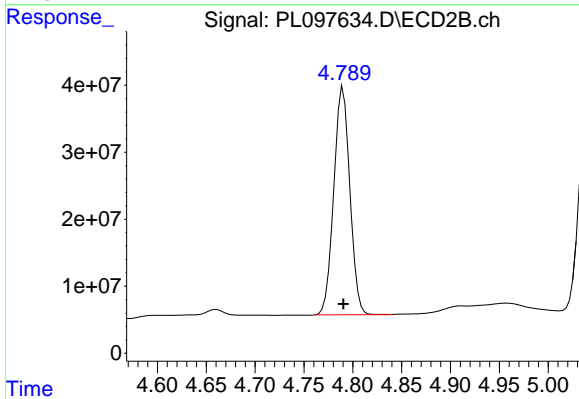
#7 delta-BHC

R.T.: 4.187 min
 Delta R.T.: 0.000 min
 Response: 459590026
 Conc: 50.87 ng/ml



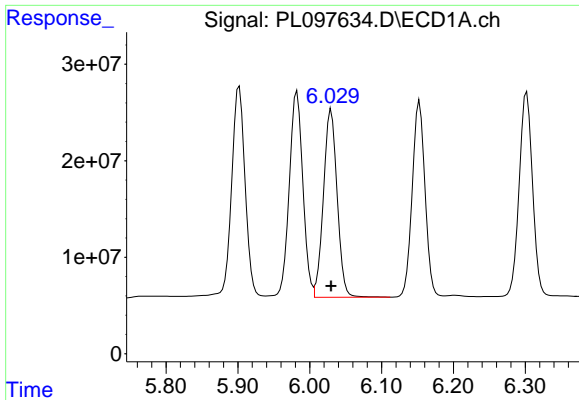
#8 Heptachlor epoxide

R.T.: 5.648 min
 Delta R.T.: 0.000 min
 Response: 288965308
 Conc: 49.63 ng/ml



#8 Heptachlor epoxide

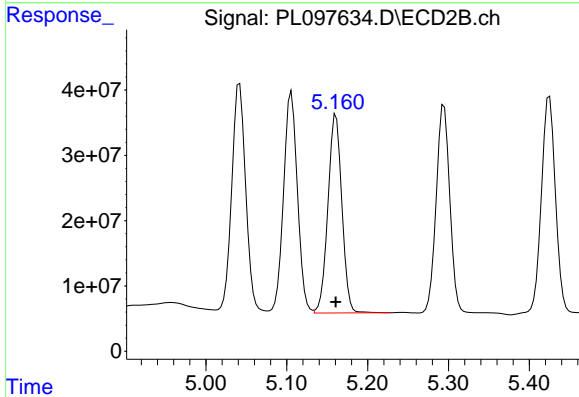
R.T.: 4.790 min
 Delta R.T.: 0.000 min
 Response: 389541538
 Conc: 49.32 ng/ml



#9 Endosulfan I

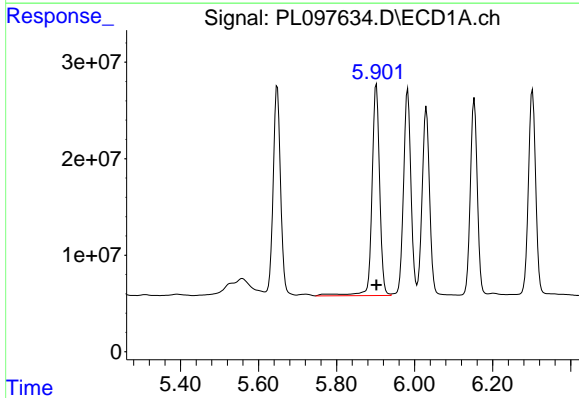
R.T.: 6.030 min
 Delta R.T.: 0.000 min
 Response: 257520410
 Conc: 51.80 ng/ml

Instrument :
 ECD_L
 ClientSampleId :
 PSTDCCC050



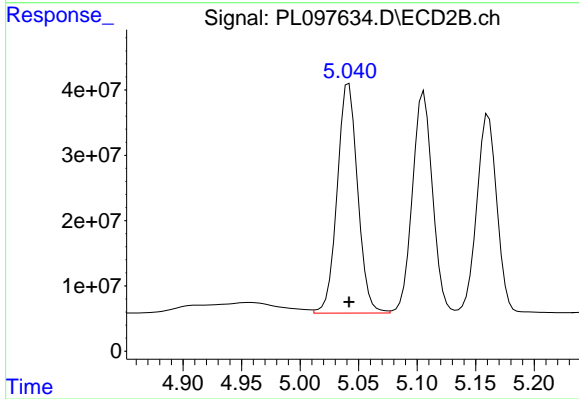
#9 Endosulfan I

R.T.: 5.161 min
 Delta R.T.: 0.000 min
 Response: 364771374
 Conc: 49.46 ng/ml



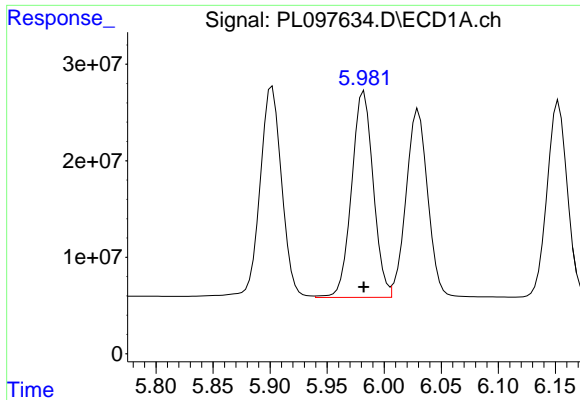
#10 gamma-Chlordane

R.T.: 5.902 min
 Delta R.T.: 0.000 min
 Response: 299626119
 Conc: 55.21 ng/ml



#10 gamma-Chlordane

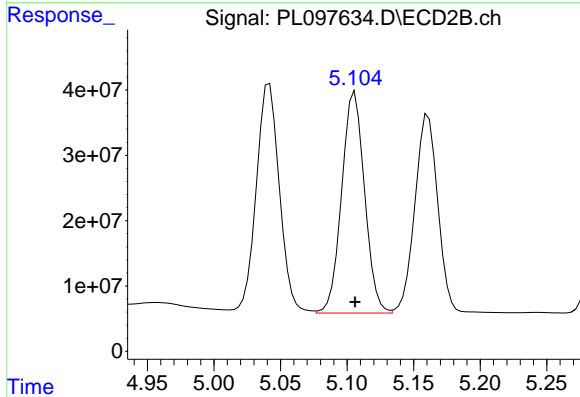
R.T.: 5.042 min
 Delta R.T.: 0.000 min
 Response: 428194868
 Conc: 49.26 ng/ml



#11 alpha-Chlordane

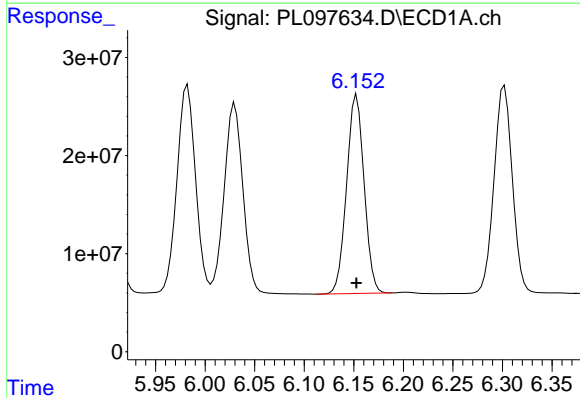
R.T.: 5.982 min
 Delta R.T.: 0.000 min
 Response: 281340565
 Conc: 51.85 ng/ml

Instrument :
 ECD_L
 ClientSampleId :
 PSTDCCC050



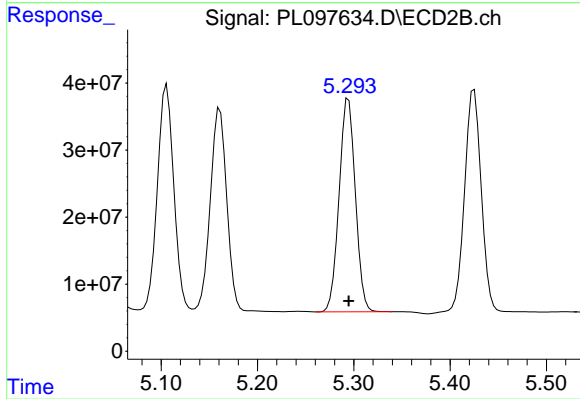
#11 alpha-Chlordane

R.T.: 5.106 min
 Delta R.T.: 0.000 min
 Response: 405875991
 Conc: 48.74 ng/ml



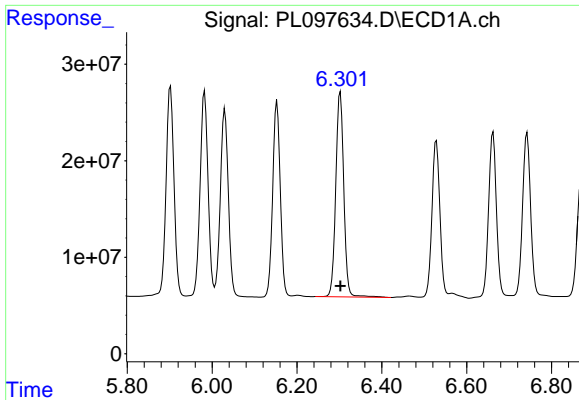
#12 4,4'-DDE

R.T.: 6.153 min
 Delta R.T.: 0.000 min
 Response: 248959854
 Conc: 53.46 ng/ml



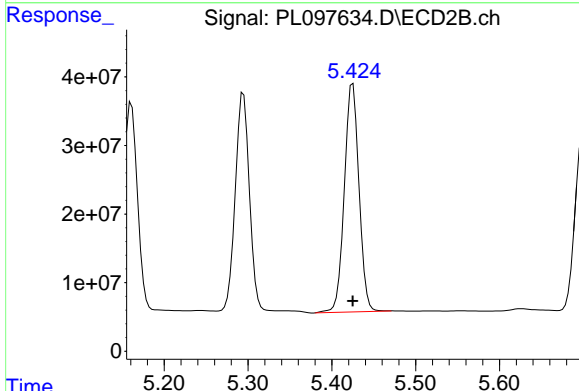
#12 4,4'-DDE

R.T.: 5.295 min
 Delta R.T.: 0.000 min
 Response: 372157803
 Conc: 49.02 ng/ml

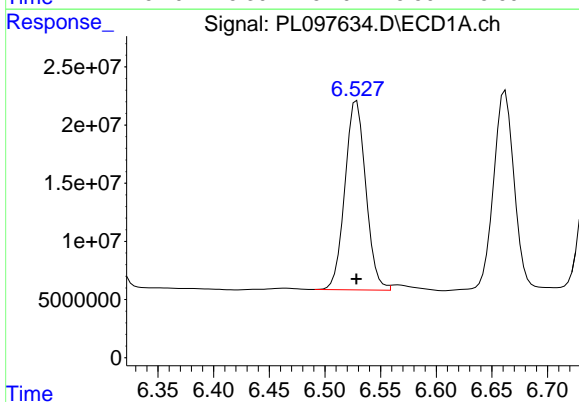


#13 Dieldrin
 R.T.: 6.302 min
 Delta R.T.: 0.000 min
 Response: 279390317
 Conc: 53.11 ng/ml

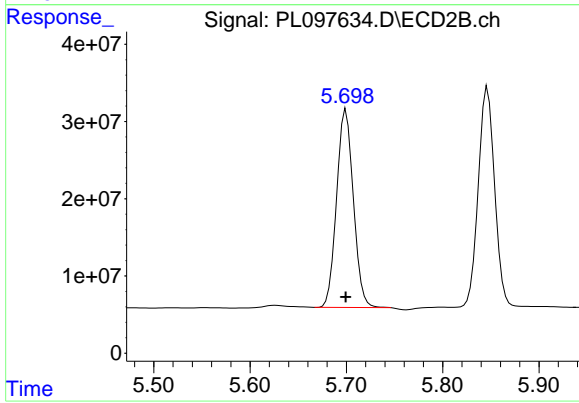
Instrument :
 ECD_L
 ClientSampleId :
 PSTDCCC050



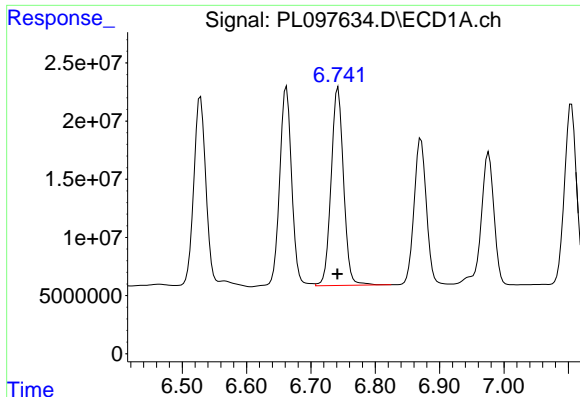
#13 Dieldrin
 R.T.: 5.425 min
 Delta R.T.: 0.000 min
 Response: 405627002
 Conc: 49.06 ng/ml



#14 Endrin
 R.T.: 6.528 min
 Delta R.T.: 0.000 min
 Response: 212167344
 Conc: 47.42 ng/ml



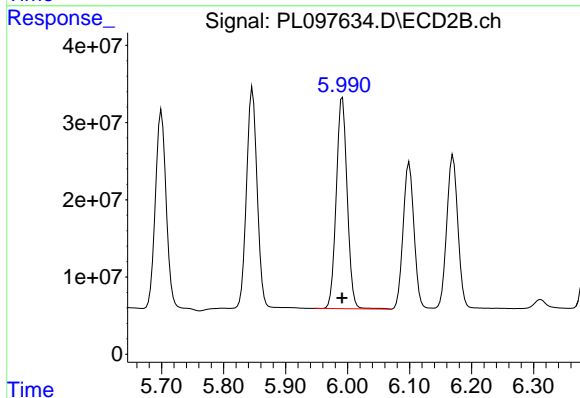
#14 Endrin
 R.T.: 5.700 min
 Delta R.T.: 0.000 min
 Response: 309797477
 Conc: 41.86 ng/ml



#15 Endosulfan II

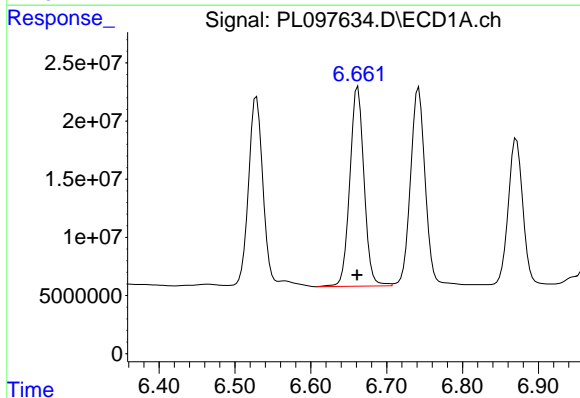
R.T.: 6.742 min
 Delta R.T.: 0.000 min
 Response: 228522735
 Conc: 46.71 ng/ml

Instrument :
 ECD_L
 ClientSampleId :
 PSTDCCC050



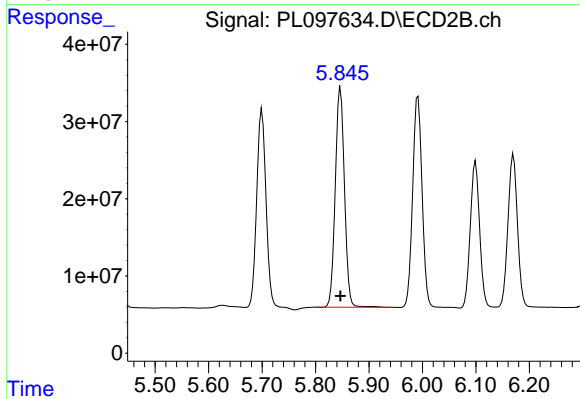
#15 Endosulfan II

R.T.: 5.992 min
 Delta R.T.: 0.000 min
 Response: 337659059
 Conc: 48.90 ng/ml



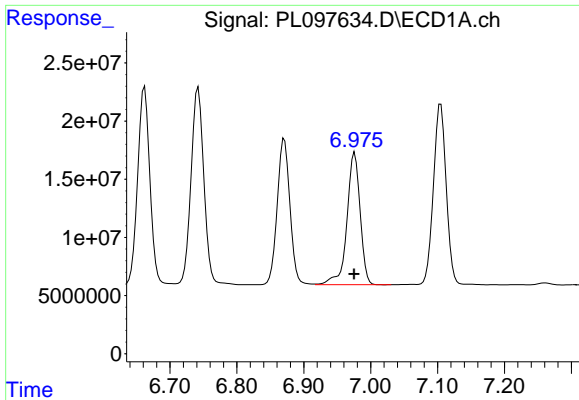
#16 4,4'-DDD

R.T.: 6.662 min
 Delta R.T.: 0.001 min
 Response: 223212522
 Conc: 59.15 ng/ml



#16 4,4'-DDD

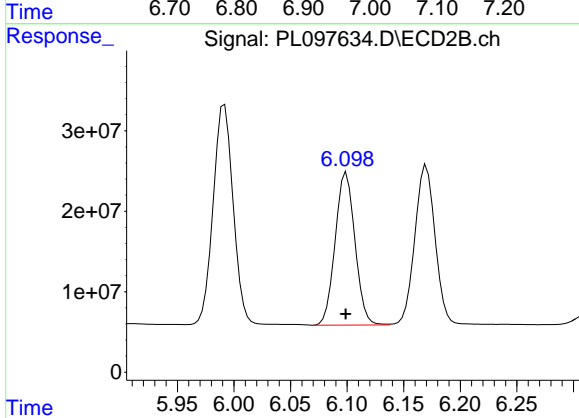
R.T.: 5.847 min
 Delta R.T.: 0.000 min
 Response: 340346470
 Conc: 53.36 ng/ml



#17 4,4'-DDT

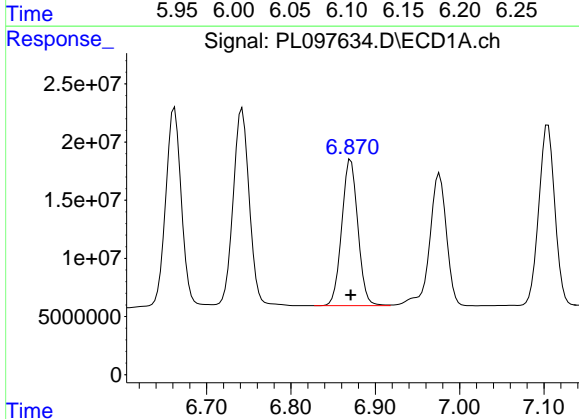
R.T.: 6.976 min
Delta R.T.: 0.000 min
Response: 157026796
Conc: 38.73 ng/ml

Instrument :
ECD_L
ClientSampleId :
PSTDCCC050



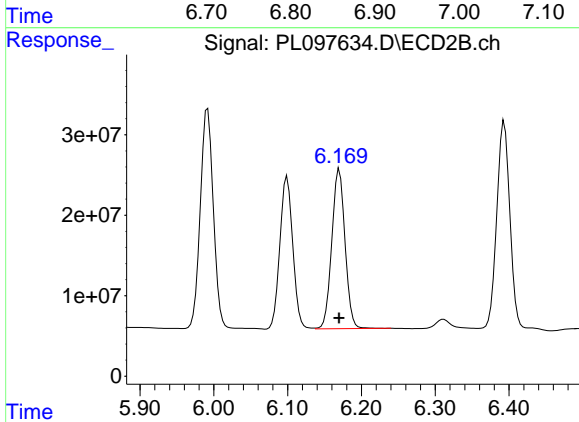
#17 4,4'-DDT

R.T.: 6.099 min
Delta R.T.: 0.000 min
Response: 230521415
Conc: 34.60 ng/ml



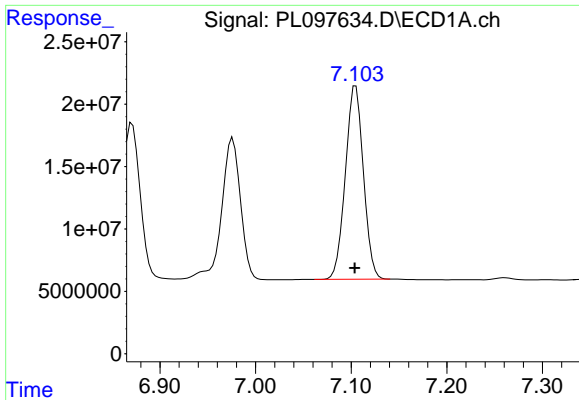
#18 Endrin aldehyde

R.T.: 6.871 min
Delta R.T.: 0.000 min
Response: 166856314
Conc: 50.92 ng/ml



#18 Endrin aldehyde

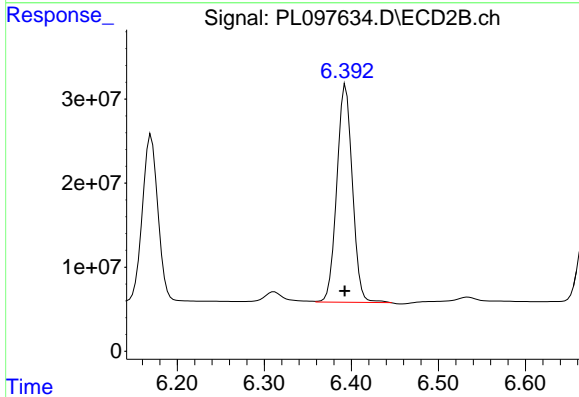
R.T.: 6.170 min
Delta R.T.: 0.000 min
Response: 247060671
Conc: 42.90 ng/ml



#19 Endosulfan Sulfate

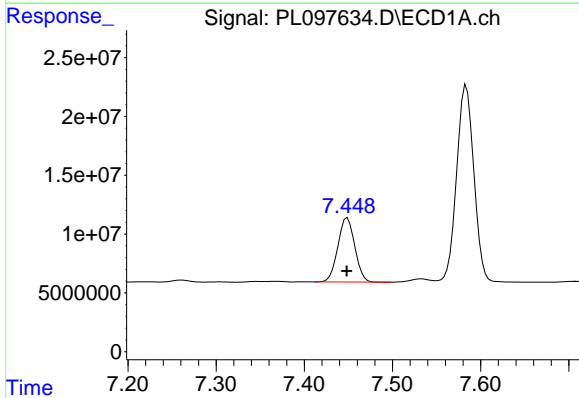
R.T.: 7.105 min
 Delta R.T.: 0.001 min
 Response: 203776656
 Conc: 50.82 ng/ml

Instrument :
 ECD_L
 ClientSampleId :
 PSTDCCC050



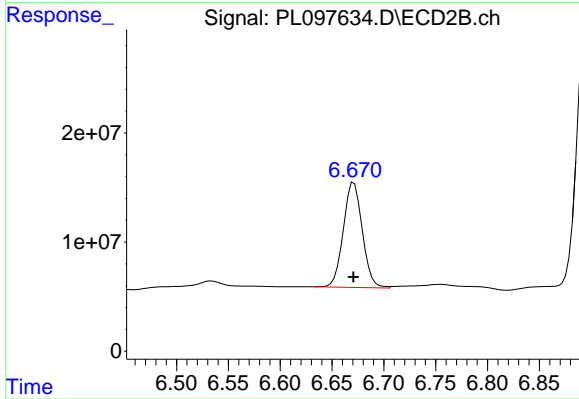
#19 Endosulfan Sulfate

R.T.: 6.394 min
 Delta R.T.: 0.000 min
 Response: 321762440
 Conc: 48.33 ng/ml



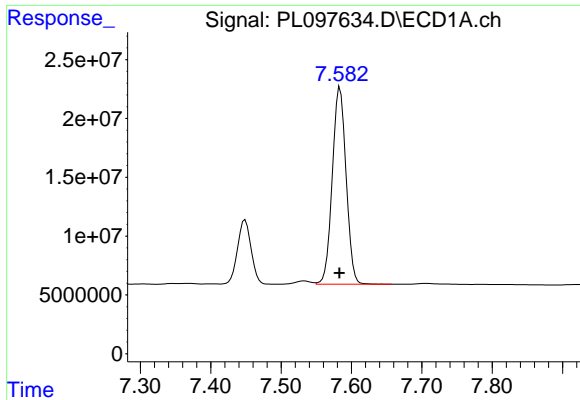
#20 Methoxychlor

R.T.: 7.449 min
 Delta R.T.: 0.000 min
 Response: 72877457
 Conc: 34.89 ng/ml



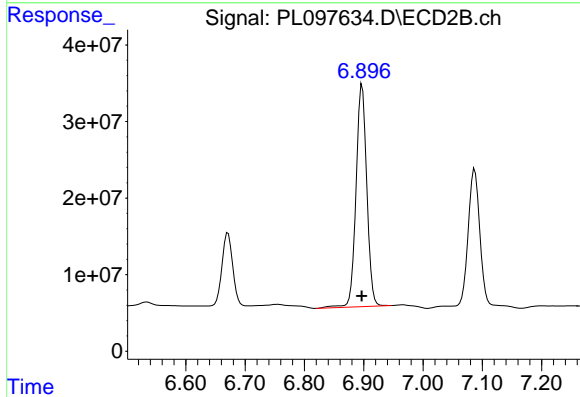
#20 Methoxychlor

R.T.: 6.671 min
 Delta R.T.: 0.000 min
 Response: 122685234
 Conc: 33.66 ng/ml

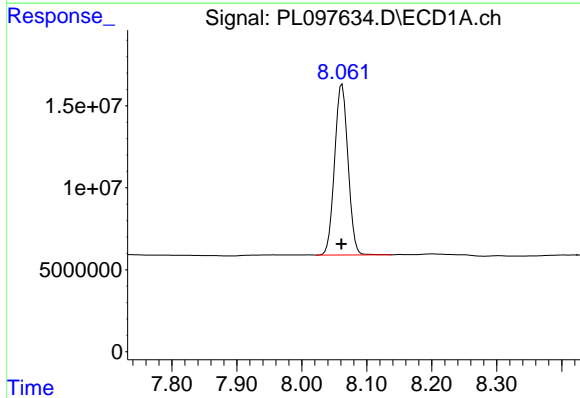


#21 Endrin ketone
 R.T.: 7.584 min
 Delta R.T.: 0.000 min
 Response: 228400953
 Conc: 53.34 ng/ml

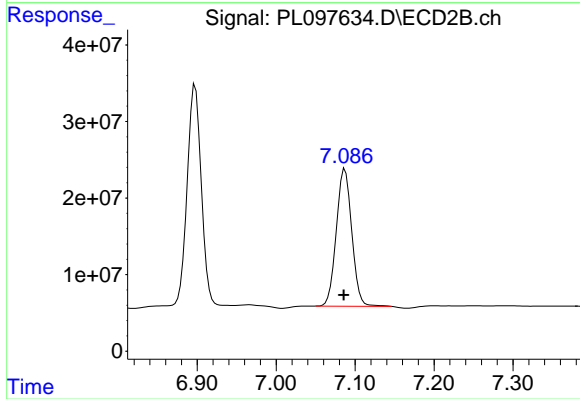
Instrument :
 ECD_L
 ClientSampleId :
 PSTDCCC050



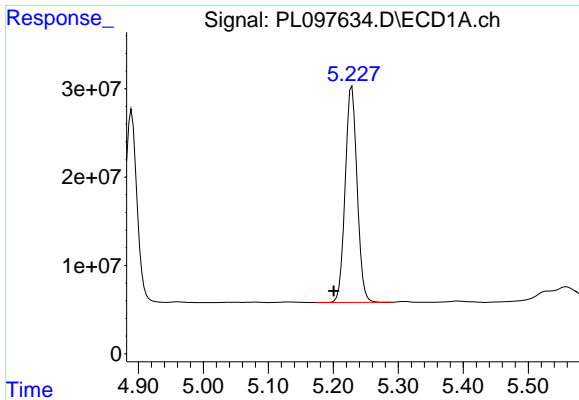
#21 Endrin ketone
 R.T.: 6.897 min
 Delta R.T.: 0.000 min
 Response: 365873185
 Conc: 46.31 ng/ml



#22 Mirex
 R.T.: 8.062 min
 Delta R.T.: 0.000 min
 Response: 148864503
 Conc: 47.91 ng/ml



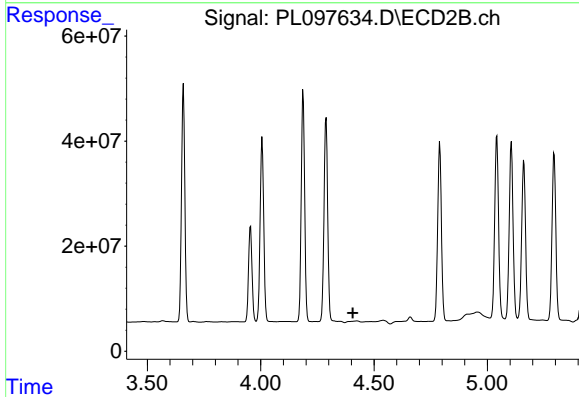
#22 Mirex
 R.T.: 7.087 min
 Delta R.T.: 0.001 min
 Response: 243869426
 Conc: 45.58 ng/ml



#24 Chlordane-2

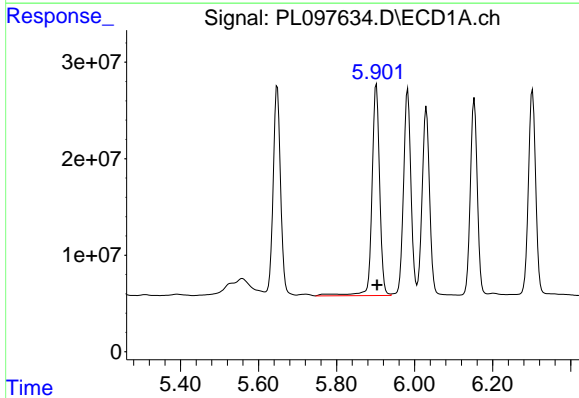
R.T.: 5.229 min
 Delta R.T.: 0.028 min
 Response: 312514278
 Conc: 1384.51 ng/m

Instrument :
 ECD_L
 ClientSampleId :
 PSTDCCC050



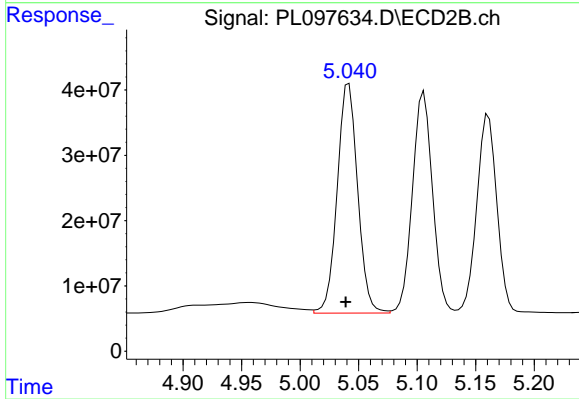
#24 Chlordane-2

R.T.: 0.000 min
 Exp R.T. : 4.406 min
 Response: 0
 Conc: N.D.



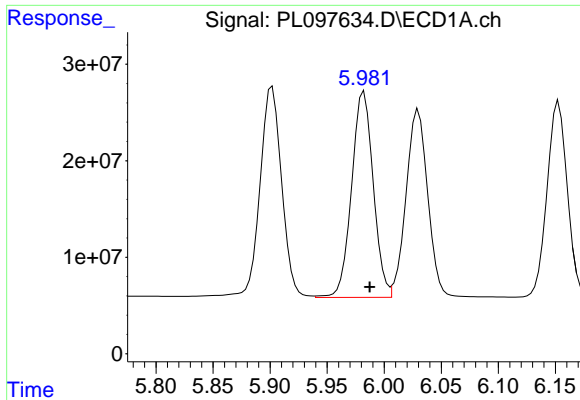
#25 Chlordane-3

R.T.: 5.902 min
 Delta R.T.: -0.002 min
 Response: 299626119
 Conc: 366.43 ng/ml



#25 Chlordane-3

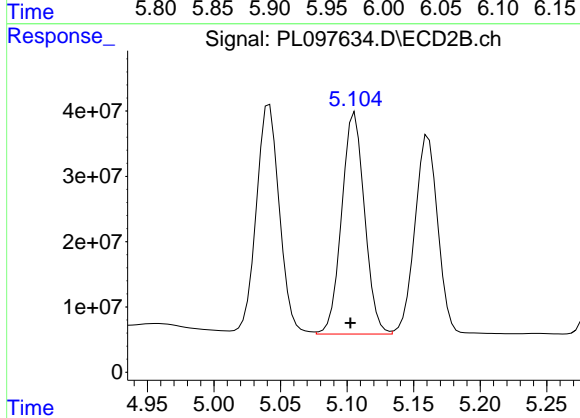
R.T.: 5.042 min
 Delta R.T.: 0.003 min
 Response: 428194868
 Conc: 467.41 ng/ml



#26 Chlordane-4

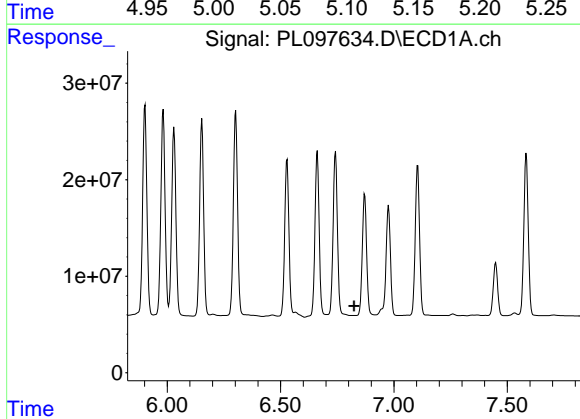
R.T.: 5.982 min
 Delta R.T.: -0.005 min
 Response: 281340565
 Conc: 274.28 ng/ml

Instrument :
 ECD_L
 ClientSampleId :
 PSTDCCC050



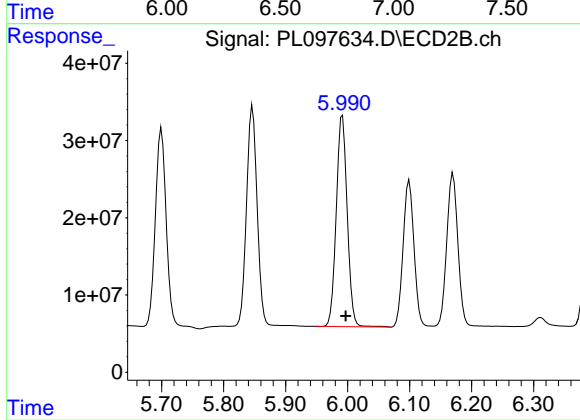
#26 Chlordane-4

R.T.: 5.106 min
 Delta R.T.: 0.003 min
 Response: 405875991
 Conc: 525.76 ng/ml



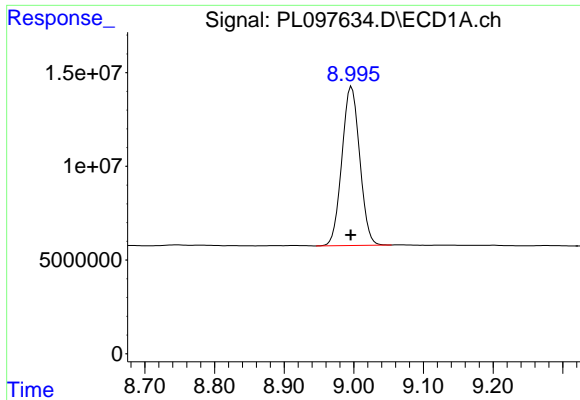
#27 Chlordane-5

R.T.: 0.000 min
 Exp R.T. : 6.825 min
 Response: 0
 Conc: N.D.



#27 Chlordane-5

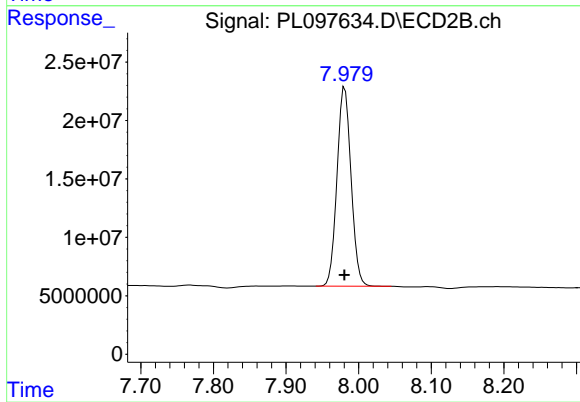
R.T.: 5.992 min
 Delta R.T.: -0.005 min
 Response: 337659059
 Conc: 1140.28 ng/ml



#28 Decachlorobiphenyl

R.T.: 8.997 min
Delta R.T.: 0.001 min
Response: 150588260
Conc: 50.64 ng/ml

Instrument :
ECD_L
ClientSampleId :
PSTDCCC050



#28 Decachlorobiphenyl

R.T.: 7.981 min
Delta R.T.: 0.000 min
Response: 229016470
Conc: 44.13 ng/ml