

Data Path : Z:\pestpcbsrv\HPCHEM1\ECD\_L\Data\PL101419\  
 Data File : PL053299.D  
 Signal(s) : Signal #1: ECD1A.ch Signal #2: ECD2B.ch  
 Acq On : 14 Oct 2019 12:18  
 Operator : SG\AJ  
 Sample : TOX-MDL-W-03  
 Misc :  
 ALS Vial : 8 Sample Multiplier: 1

Instrument :  
 ECD\_L  
 ClientSampleId :

Integration File signal 1: autoint1.e  
 Integration File signal 2: autoint2.e  
 Quant Time: Oct 14 12:37:07 2019  
 Quant Method : Z:\pestpcbsrv\HPCHEM1\ECD\_L\methods\PL092819CLP.M  
 Quant Title : GC Extractables  
 QLast Update : Sat Sep 28 05:45:16 2019  
 Response via : Initial Calibration  
 Integrator: ChemStation

Volume Inj. : 1 µl  
 Signal #1 Phase : ZB-MR2 Signal #2 Phase: ZB-MR1  
 Signal #1 Info : 30M x 0.32mm x0.2 Signal #2 Info : 30M x 0.32mm x 0.50µm

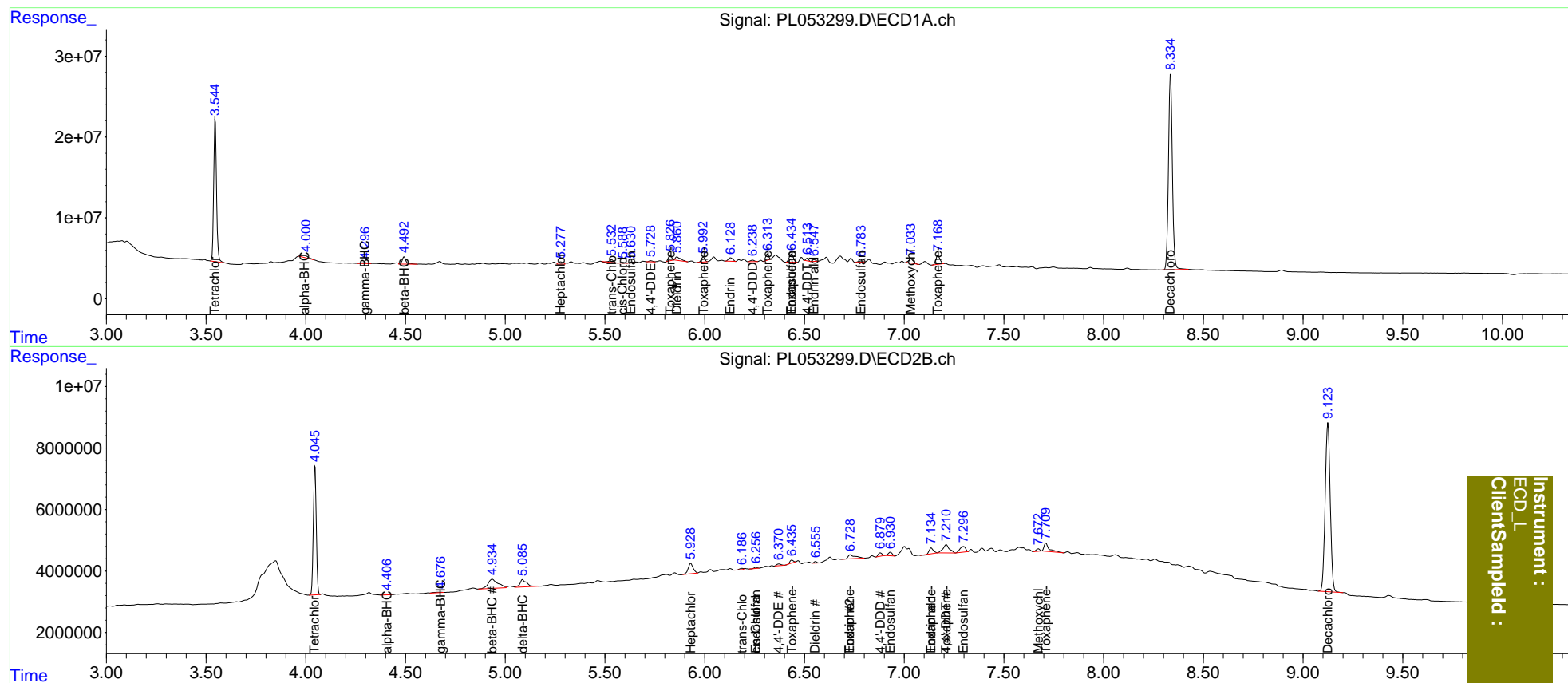
	Compound	RT#1	RT#2	Resp#1	Resp#2	ng/ml	ng/ml
-----							
System Monitoring Compounds							
1)	SA Tetrachlo...	3.546	4.046	174.7E6	42784171	18.767	17.037
2)	SA Decachlor...	8.336	9.125	330.9E6	95769384	36.506	35.855
Target Compounds							
2)	A alpha-BHC	3.993	4.407f	5702581	475504	0.404	0.141 #
3)	MA gamma-BHC...	4.297	4.677f	2560834	534761	0.198	0.165
5)	MB Aldrin	4.863	5.530	993204	44311	<MDL	<MDL #
6)	B beta-BHC	4.493f	4.935f	12873342	10371683	2.192	6.989 #
7)	B delta-BHC	4.761	5.087	1064292	5622653	<MDL	1.687 #
8)	B Heptachlo...	5.279	5.930	4936086	5926414	0.415	1.915 #
9)	A Endosulfan I	5.632	6.257	1642441	370459	0.149	0.129
10)	B trans-Chl...	5.533	6.187	4619286	478463	0.382	0.158 #
11)	B cis-Chlor...	5.589	6.257	1315130	370459	0.112	0.124
12)	B 4,4'-DDE	5.730	6.372	1519095	850018	0.140	0.282 #
13)	MA Dieldrin	5.861	6.556	8173244	502992	0.667	0.164 #
14)	MA Endrin	6.129	6.730	6466482	3391727	0.645	1.402 #
15)	B Endosulfa...	6.435	6.931	15265239	1659950	1.435	0.616 #
16)	A 4,4'-DDD	6.240	6.881	2491167	1349821	0.303	0.607 #
17)	MA 4,4'-DDT	6.514	7.211f	3077836	6029406	0.323	2.544 #
18)	B Endrin al...	6.549	7.136f	2405314	2644687	0.285	1.205 #
19)	B Endosulfa...	6.785	7.297	2269738	3562086	0.232	1.424 #
20)	A Methoxychlor	7.034	7.673f	8549058	969945	1.811	0.752 #
22)	Toxaphene-1	5.828	6.437	7643244	1038765	102.319	72.670 #
23)	Toxaphene-2	5.993	6.730	7648738	3391727	102.467	198.797 #
24)	Toxaphene-3	6.315	7.136	8295142	2644687	99.819	105.082
25)	Toxaphene-4	6.435	7.211	15265239	6029406	79.377	87.596
26)	Toxaphene-5	7.169	7.711	15913760	4914853	82.995	161.483 #

(f)=RT Delta > 1/2 Window (#)=Amounts differ by > 25% (m)=manual int.

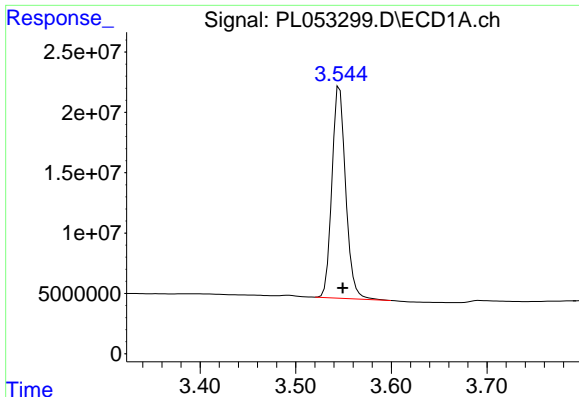
Data Path : Z:\pestpcbsrv\HPCHEM1\ECD\_L\Data\PL101419\  
 Data File : PL053299.D  
 Signal(s) : Signal #1: ECD1A.ch Signal #2: ECD2B.ch  
 Acq On : 14 Oct 2019 12:18  
 Operator : SG\AJ  
 Sample : TOX-MDL-W-03  
 Misc :  
 ALS Vial : 8 Sample Multiplier: 1

Integration File signal 1: autoint1.e  
 Integration File signal 2: autoint2.e  
 Quant Time: Oct 14 12:37:07 2019  
 Quant Method : Z:\pestpcbsrv\HPCHEM1\ECD\_L\methods\PL092819CLP.M  
 Quant Title : GC Extractables  
 QLast Update : Sat Sep 28 05:45:16 2019  
 Response via : Initial Calibration  
 Integrator: ChemStation

Volume Inj. : 1 µl  
 Signal #1 Phase : ZB-MR2 Signal #2 Phase: ZB-MR1  
 Signal #1 Info : 30M x 0.32mm x0.2 Signal #2 Info : 30M x 0.32mm x 0.50µm

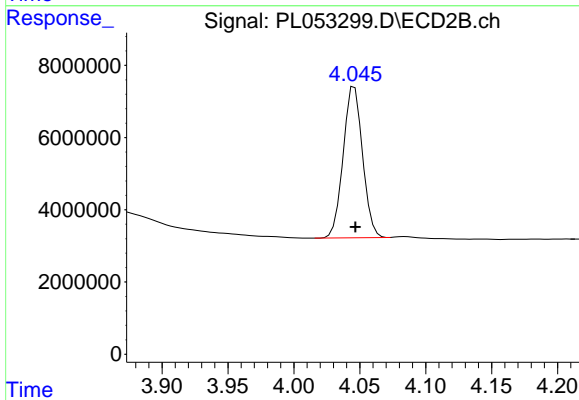


Instrument :  
 ECD\_L  
 ClientSampleId :

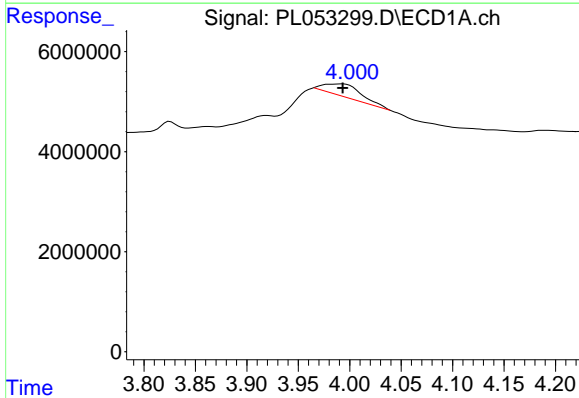


#1 Tetrachloro-m-xylene  
 R.T.: 3.546 min  
 Delta R.T.: -0.003 min  
 Response: 174659064  
 Conc: 18.77 ng/ml

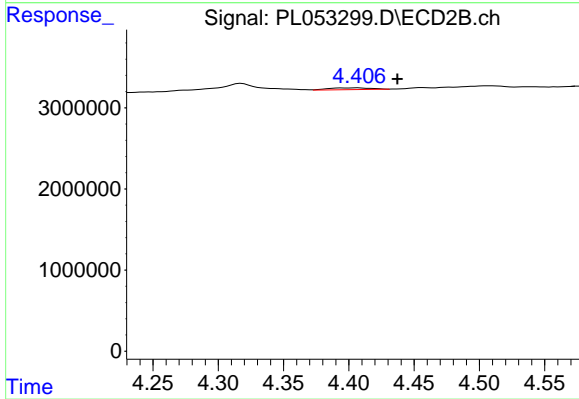
Instrument :  
 ECD\_L  
 ClientSampleId :



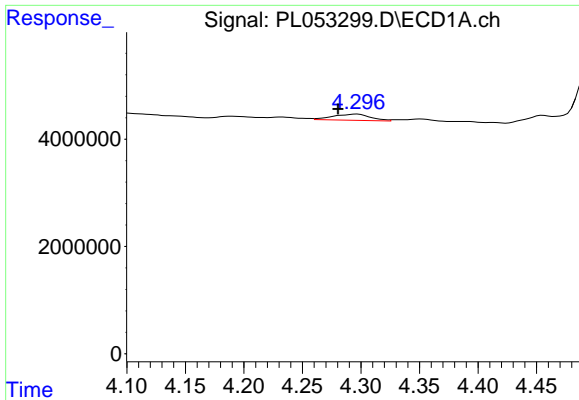
#1 Tetrachloro-m-xylene  
 R.T.: 4.046 min  
 Delta R.T.: 0.000 min  
 Response: 42784171  
 Conc: 17.04 ng/ml



#2 alpha-BHC  
 R.T.: 3.993 min  
 Delta R.T.: 0.000 min  
 Response: 5702581  
 Conc: 0.40 ng/ml

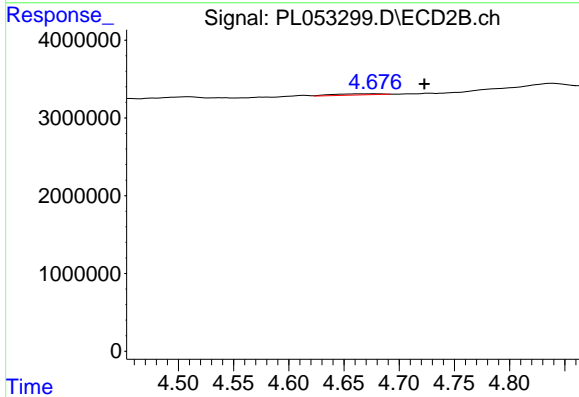


#2 alpha-BHC  
 R.T.: 4.407 min  
 Delta R.T.: -0.030 min  
 Response: 475504  
 Conc: 0.14 ng/ml

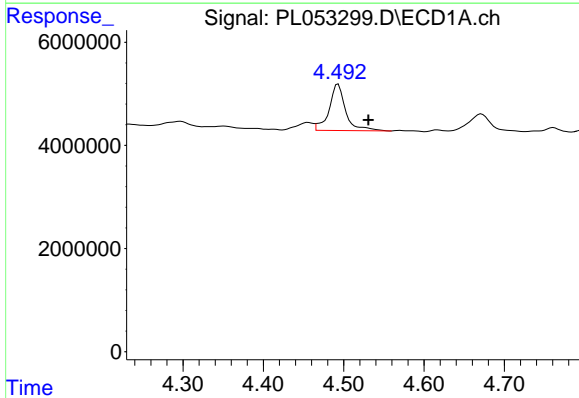


#3 gamma-BHC (Lindane)  
 R.T.: 4.297 min  
 Delta R.T.: 0.016 min  
 Response: 2560834  
 Conc: 0.20 ng/ml

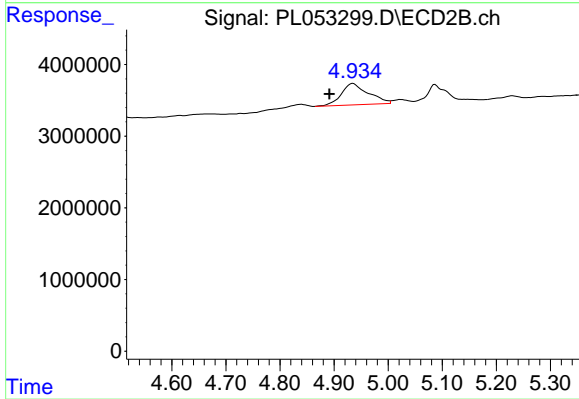
Instrument :  
 ECD\_L  
 ClientSampleId :



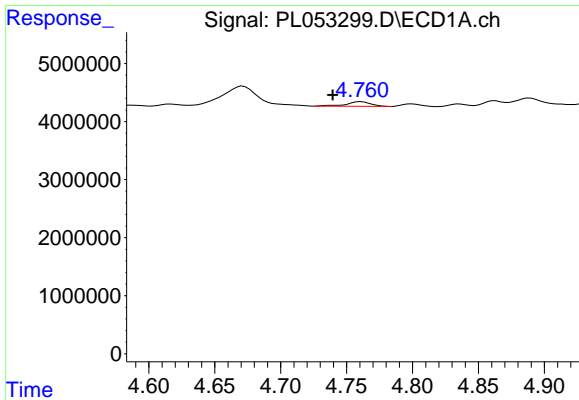
#3 gamma-BHC (Lindane)  
 R.T.: 4.677 min  
 Delta R.T.: -0.046 min  
 Response: 534761  
 Conc: 0.17 ng/ml



#6 beta-BHC  
 R.T.: 4.493 min  
 Delta R.T.: -0.038 min  
 Response: 12873342  
 Conc: 2.19 ng/ml



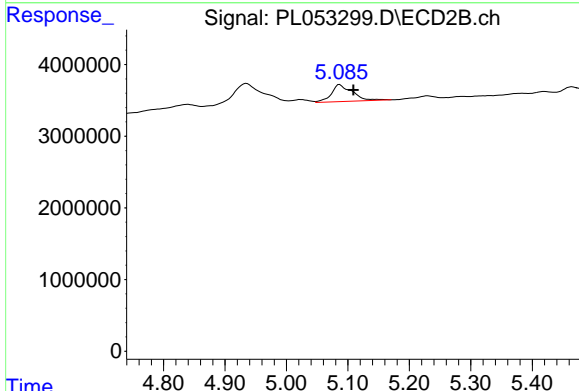
#6 beta-BHC  
 R.T.: 4.935 min  
 Delta R.T.: 0.044 min  
 Response: 10371683  
 Conc: 6.99 ng/ml



#7 delta-BHC

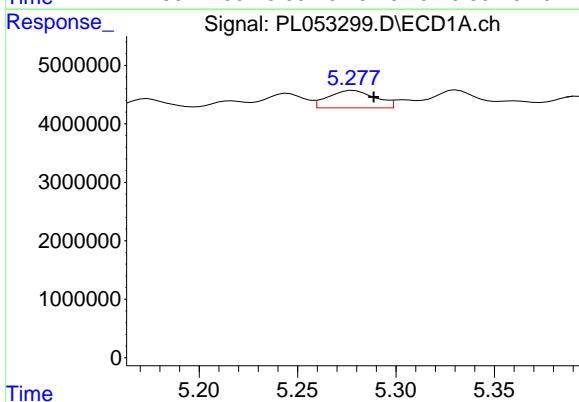
R.T.: 4.761 min  
 Delta R.T.: 0.022 min  
 Response: 1064292  
 Conc: N.D.

Instrument :  
 ECD\_L  
 ClientSampleId :



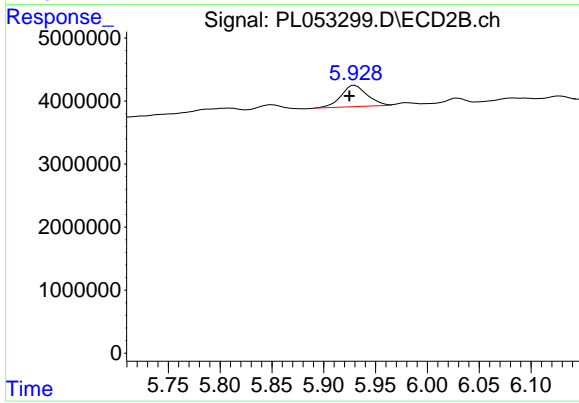
#7 delta-BHC

R.T.: 5.087 min  
 Delta R.T.: -0.023 min  
 Response: 5622653  
 Conc: 1.69 ng/ml



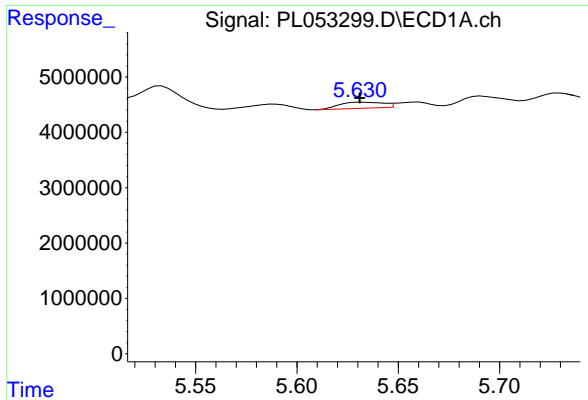
#8 Heptachlor epoxide

R.T.: 5.279 min  
 Delta R.T.: -0.010 min  
 Response: 4936086  
 Conc: 0.41 ng/ml



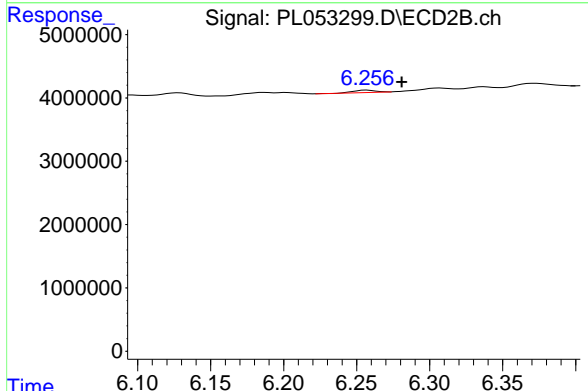
#8 Heptachlor epoxide

R.T.: 5.930 min  
 Delta R.T.: 0.005 min  
 Response: 5926414  
 Conc: 1.91 ng/ml

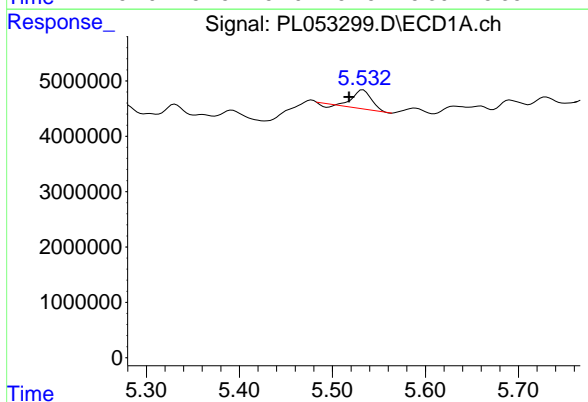


#9 Endosulfan I  
 R.T.: 5.632 min  
 Delta R.T.: 0.001 min  
 Response: 1642441  
 Conc: 0.15 ng/ml

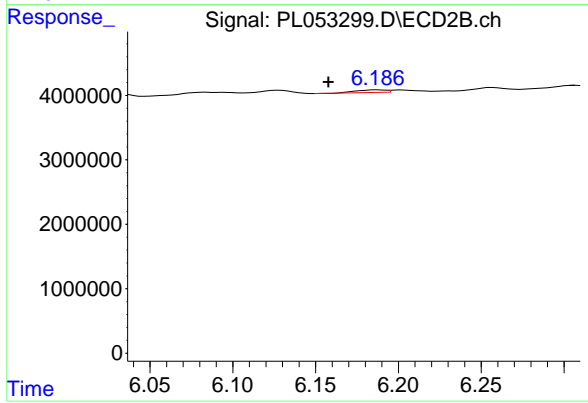
Instrument :  
 ECD\_L  
 ClientSampled :



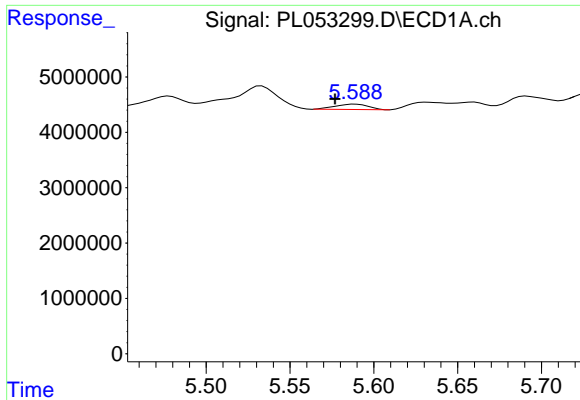
#9 Endosulfan I  
 R.T.: 6.257 min  
 Delta R.T.: -0.024 min  
 Response: 370459  
 Conc: 0.13 ng/ml



#10 trans-Chlordane  
 R.T.: 5.533 min  
 Delta R.T.: 0.015 min  
 Response: 4619286  
 Conc: 0.38 ng/ml

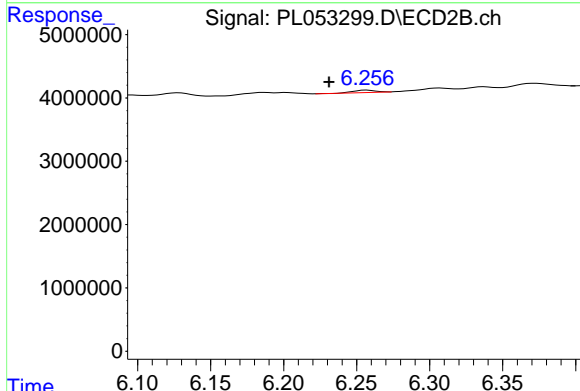


#10 trans-Chlordane  
 R.T.: 6.187 min  
 Delta R.T.: 0.029 min  
 Response: 478463  
 Conc: 0.16 ng/ml

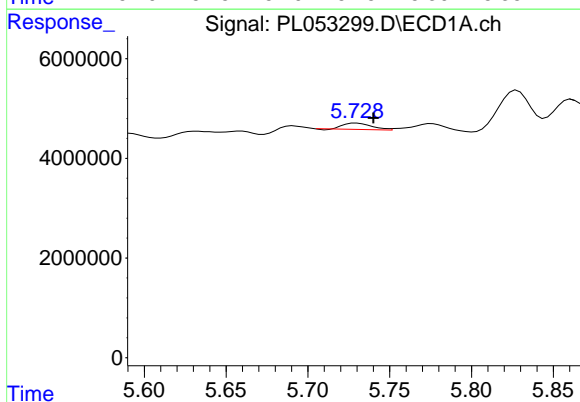


#11 cis-Chlordane  
 R.T.: 5.589 min  
 Delta R.T.: 0.012 min  
 Response: 1315130  
 Conc: 0.11 ng/ml

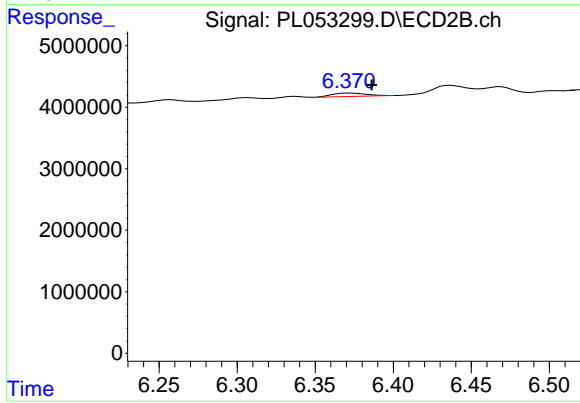
Instrument :  
 ECD\_L  
 ClientSampleId :



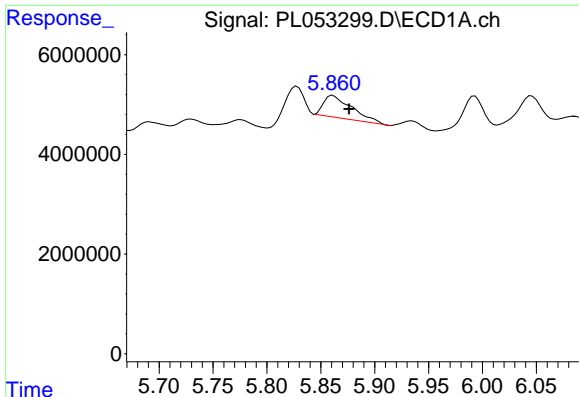
#11 cis-Chlordane  
 R.T.: 6.257 min  
 Delta R.T.: 0.026 min  
 Response: 370459  
 Conc: 0.12 ng/ml



#12 4,4'-DDE  
 R.T.: 5.730 min  
 Delta R.T.: -0.010 min  
 Response: 1519095  
 Conc: 0.14 ng/ml



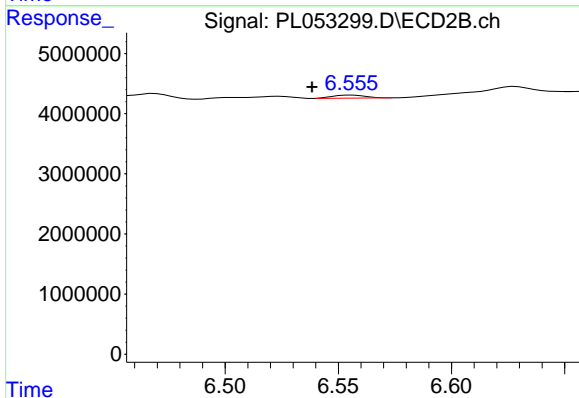
#12 4,4'-DDE  
 R.T.: 6.372 min  
 Delta R.T.: -0.014 min  
 Response: 850018  
 Conc: 0.28 ng/ml



#13 Dieldrin

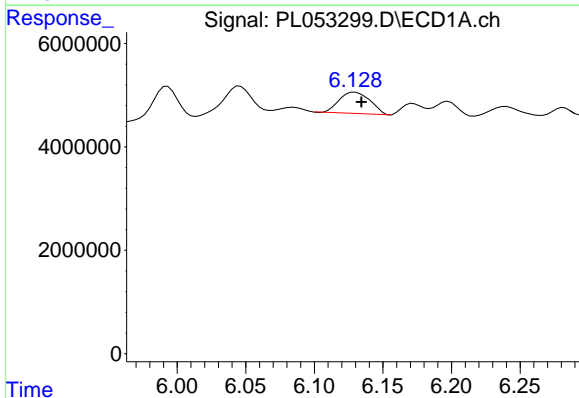
R.T.: 5.861 min  
 Delta R.T.: -0.015 min  
 Response: 8173244  
 Conc: 0.67 ng/ml

Instrument :  
 ECD\_L  
 ClientSampled :



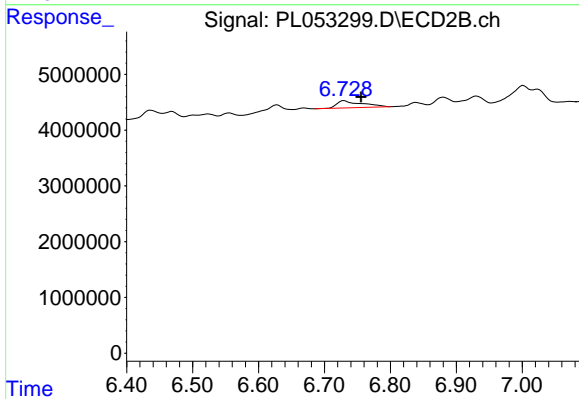
#13 Dieldrin

R.T.: 6.556 min  
 Delta R.T.: 0.018 min  
 Response: 502992  
 Conc: 0.16 ng/ml



#14 Endrin

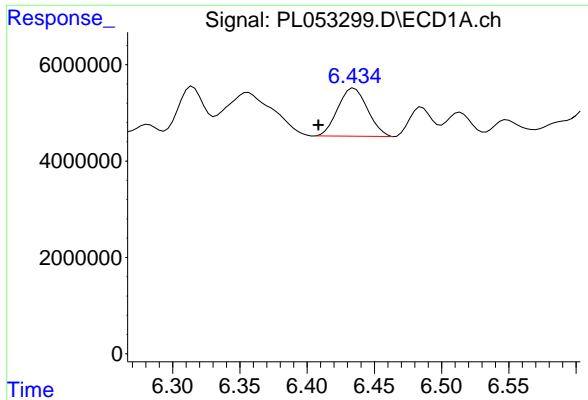
R.T.: 6.129 min  
 Delta R.T.: -0.005 min  
 Response: 6466482  
 Conc: 0.64 ng/ml



#14 Endrin

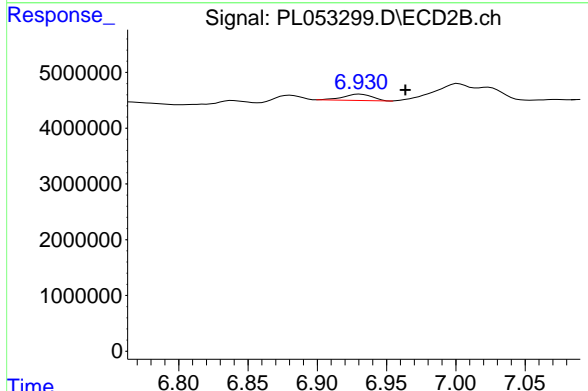
R.T.: 6.730 min  
 Delta R.T.: -0.026 min  
 Response: 3391727  
 Conc: 1.40 ng/ml



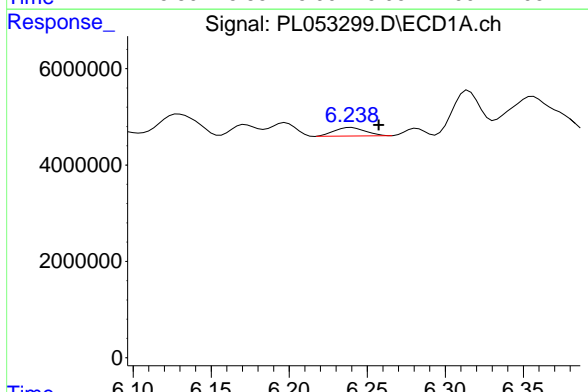


#15 Endosulfan II  
 R.T.: 6.435 min  
 Delta R.T.: 0.026 min  
 Response: 15265239  
 Conc: 1.44 ng/ml

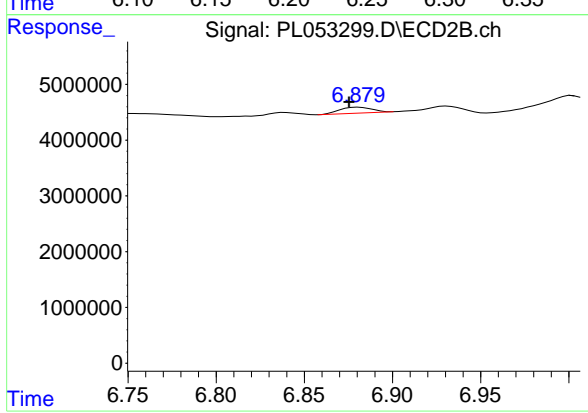
Instrument :  
 ECD\_L  
 ClientSampled :



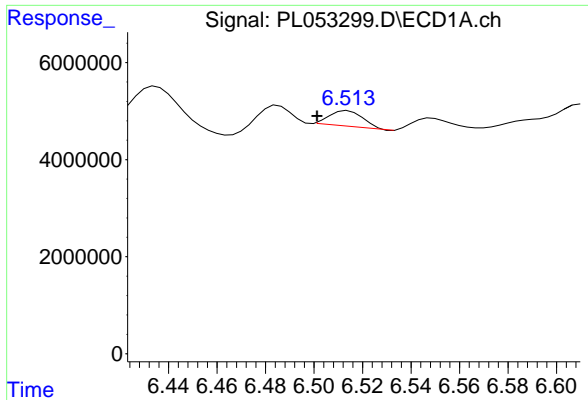
#15 Endosulfan II  
 R.T.: 6.931 min  
 Delta R.T.: -0.033 min  
 Response: 1659950  
 Conc: 0.62 ng/ml



#16 4,4'-DDD  
 R.T.: 6.240 min  
 Delta R.T.: -0.018 min  
 Response: 2491167  
 Conc: 0.30 ng/ml

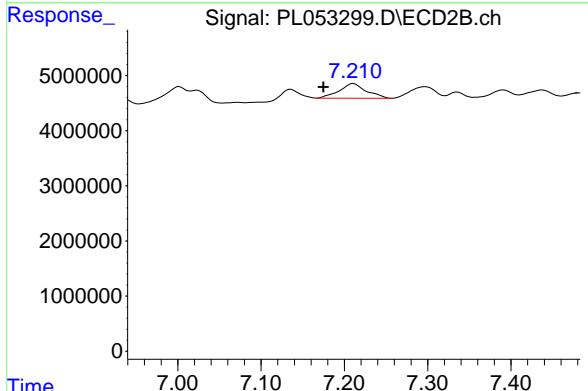


#16 4,4'-DDD  
 R.T.: 6.881 min  
 Delta R.T.: 0.005 min  
 Response: 1349821  
 Conc: 0.61 ng/ml

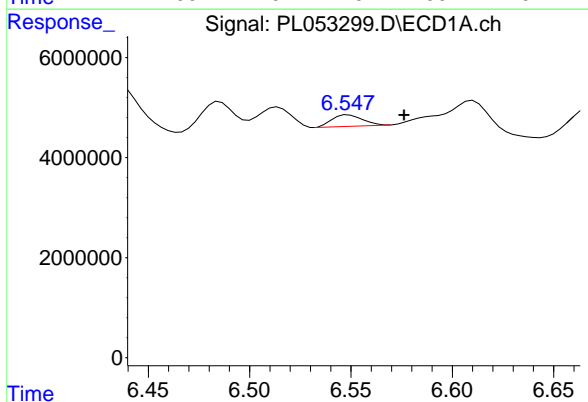


#17 4,4'-DDT  
 R.T.: 6.514 min  
 Delta R.T.: 0.013 min  
 Response: 3077836  
 Conc: 0.32 ng/ml

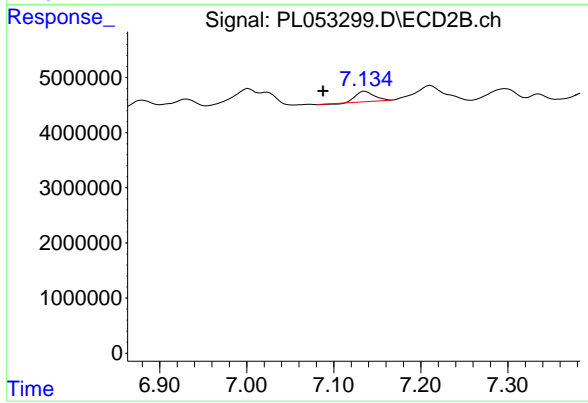
Instrument :  
 ECD\_L  
 ClientSampleId :



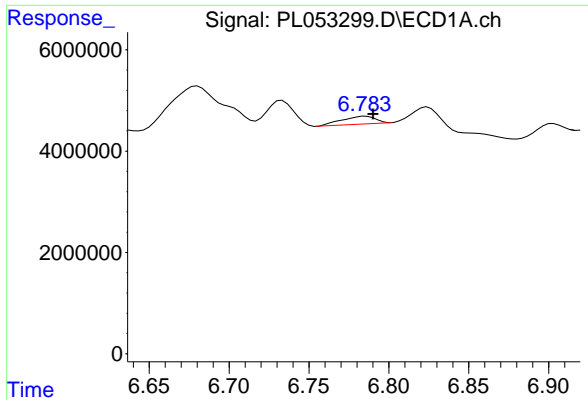
#17 4,4'-DDT  
 R.T.: 7.211 min  
 Delta R.T.: 0.036 min  
 Response: 6029406  
 Conc: 2.54 ng/ml



#18 Endrin aldehyde  
 R.T.: 6.549 min  
 Delta R.T.: -0.027 min  
 Response: 2405314  
 Conc: 0.29 ng/ml

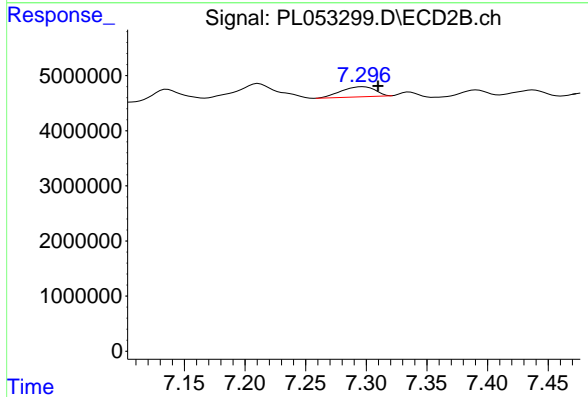


#18 Endrin aldehyde  
 R.T.: 7.136 min  
 Delta R.T.: 0.048 min  
 Response: 2644687  
 Conc: 1.21 ng/ml

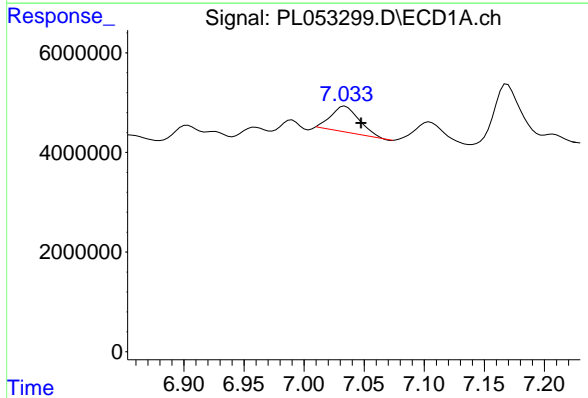


#19 Endosulfan Sulfate  
 R.T.: 6.785 min  
 Delta R.T.: -0.005 min  
 Response: 2269738  
 Conc: 0.23 ng/ml

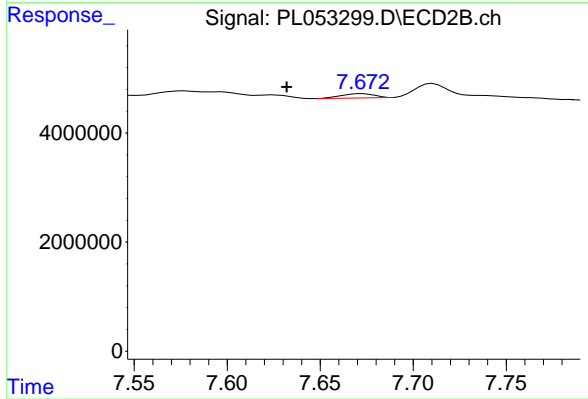
Instrument :  
 ECD\_L  
 ClientSampleId :



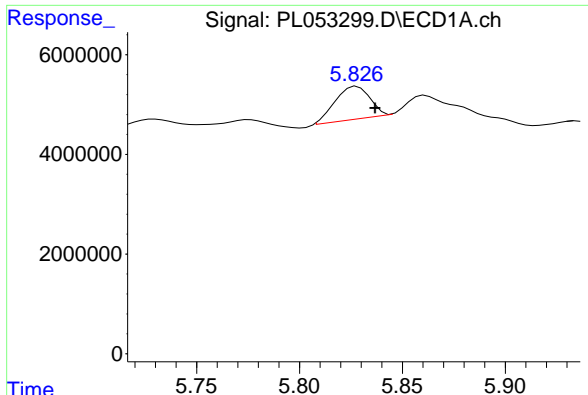
#19 Endosulfan Sulfate  
 R.T.: 7.297 min  
 Delta R.T.: -0.013 min  
 Response: 3562086  
 Conc: 1.42 ng/ml



#20 Methoxychlor  
 R.T.: 7.034 min  
 Delta R.T.: -0.013 min  
 Response: 8549058  
 Conc: 1.81 ng/ml

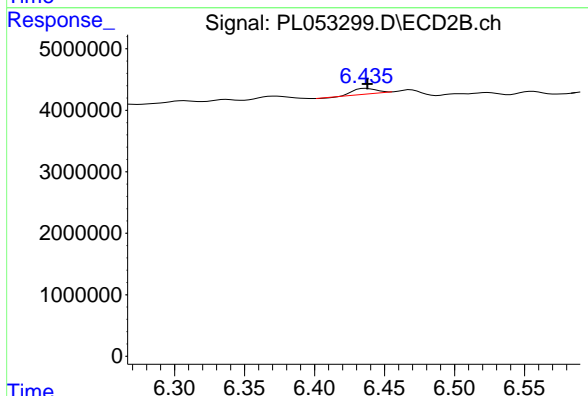


#20 Methoxychlor  
 R.T.: 7.673 min  
 Delta R.T.: 0.041 min  
 Response: 969945  
 Conc: 0.75 ng/ml

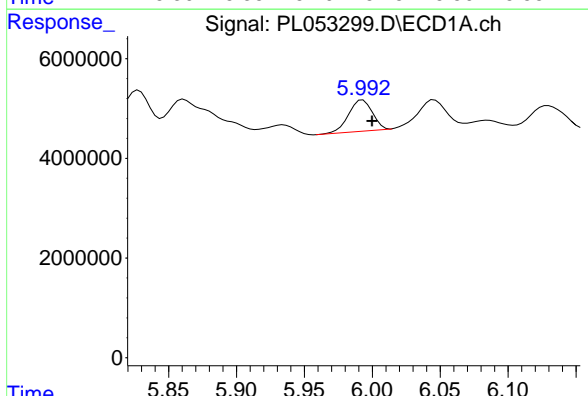


#22 Toxaphene-1  
 R.T.: 5.828 min  
 Delta R.T.: -0.009 min  
 Response: 7643244  
 Conc: 102.32 ng/ml

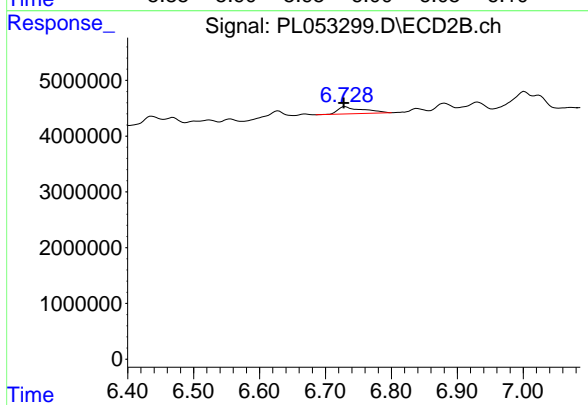
Instrument :  
 ECD\_L  
 ClientSampled :



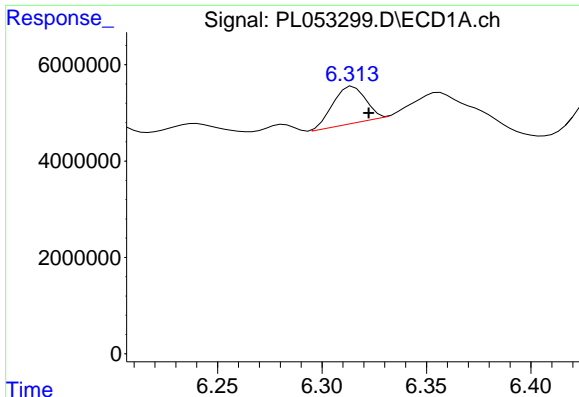
#22 Toxaphene-1  
 R.T.: 6.437 min  
 Delta R.T.: -0.001 min  
 Response: 1038765  
 Conc: 72.67 ng/ml



#23 Toxaphene-2  
 R.T.: 5.993 min  
 Delta R.T.: -0.007 min  
 Response: 7648738  
 Conc: 102.47 ng/ml



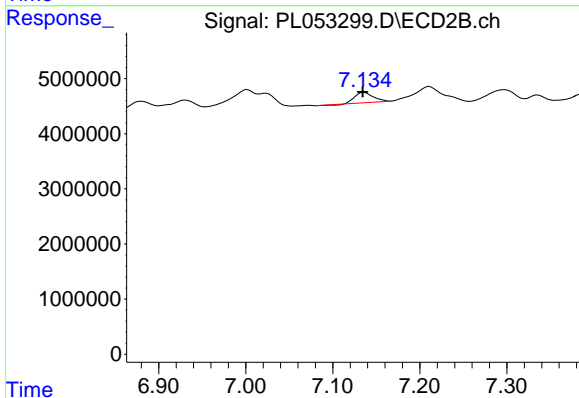
#23 Toxaphene-2  
 R.T.: 6.730 min  
 Delta R.T.: 0.002 min  
 Response: 3391727  
 Conc: 198.80 ng/ml



#24 Toxaphene-3

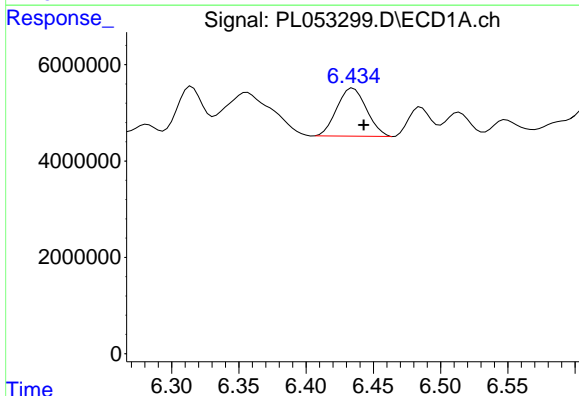
R.T.: 6.315 min  
 Delta R.T.: -0.008 min  
 Response: 8295142  
 Conc: 99.82 ng/ml

Instrument :  
 ECD\_L  
 ClientSampled :



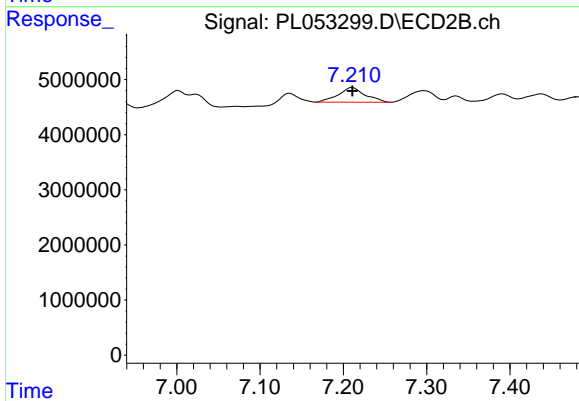
#24 Toxaphene-3

R.T.: 7.136 min  
 Delta R.T.: 0.001 min  
 Response: 2644687  
 Conc: 105.08 ng/ml



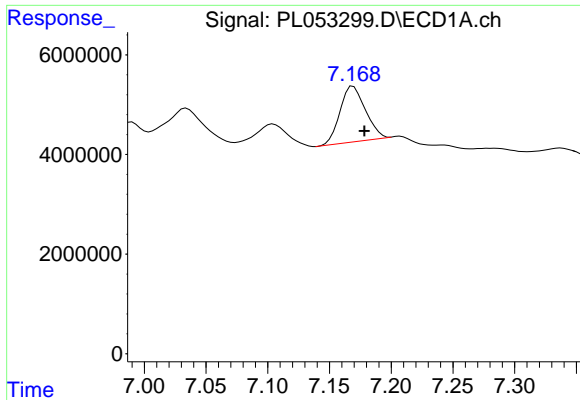
#25 Toxaphene-4

R.T.: 6.435 min  
 Delta R.T.: -0.008 min  
 Response: 15265239  
 Conc: 79.38 ng/ml



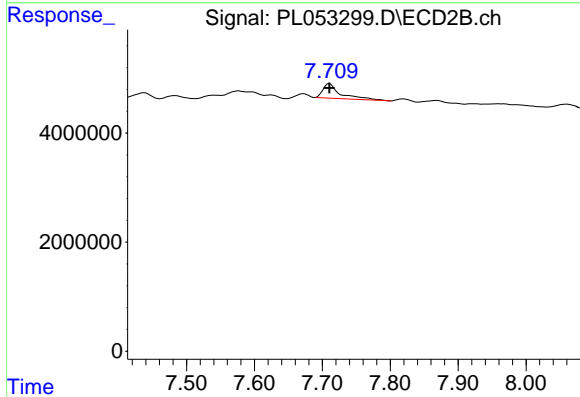
#25 Toxaphene-4

R.T.: 7.211 min  
 Delta R.T.: 0.000 min  
 Response: 6029406  
 Conc: 87.60 ng/ml

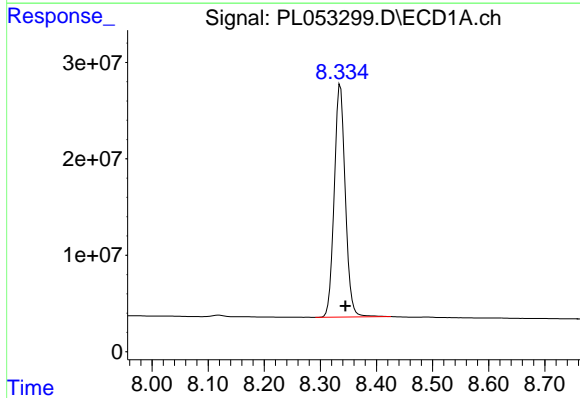


#26 Toxaphene-5  
 R.T.: 7.169 min  
 Delta R.T.: -0.009 min  
 Response: 15913760  
 Conc: 83.00 ng/ml

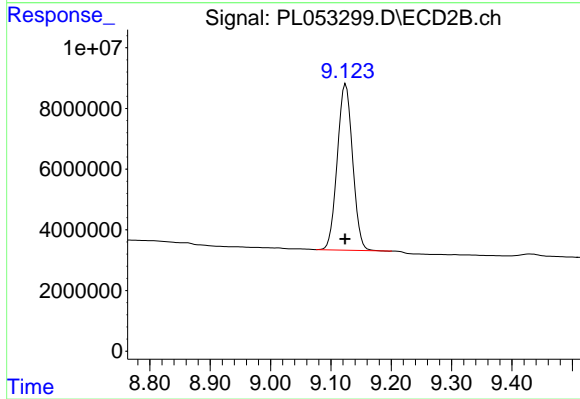
Instrument :  
 ECD\_L  
 ClientSampleId :



#26 Toxaphene-5  
 R.T.: 7.711 min  
 Delta R.T.: 0.000 min  
 Response: 4914853  
 Conc: 161.48 ng/ml



#27 Decachlorobiphenyl  
 R.T.: 8.336 min  
 Delta R.T.: -0.009 min  
 Response: 330946929  
 Conc: 36.51 ng/ml



#27 Decachlorobiphenyl  
 R.T.: 9.125 min  
 Delta R.T.: 0.001 min  
 Response: 95769384  
 Conc: 35.85 ng/ml