

Data Path : Z:\pestpcbsrv\HPCHEM1\ECD_L\Data\PL101420\
 Data File : PL062283.D
 Signal(s) : Signal #1: ECD1A.ch Signal #2: ECD2B.ch
 Acq On : 13 Oct 2020 19:26
 Operator : DD\AJ
 Sample : L4356-01
 Misc :
 ALS Vial : 30 Sample Multiplier: 1

Instrument :
 ECD_L
 ClientSampleId :

Integration File signal 1: autoint1.e
 Integration File signal 2: autoint2.e
 Quant Time: Oct 14 01:17:08 2020
 Quant Method : Z:\pestpcbsrv\HPCHEM1\ECD_L\methods\PL101320.M
 Quant Title : GC Extractables
 QLast Update : Tue Oct 13 05:04:40 2020
 Response via : Initial Calibration
 Integrator: ChemStation

Volume Inj. : 1 µl
 Signal #1 Phase : ZB-MR2 Signal #2 Phase: ZB-MR1
 Signal #1 Info : 30M x 0.32mm x0.2 Signal #2 Info : 30M x 0.32mm x0.5µm

Compound	RT#1	RT#2	Resp#1	Resp#2	ng/ml	ng/ml

System Monitoring Compounds						
1) SA Tetrachlo...	3.412	3.952	31286282	39162091	17.975	13.895
28) SA Decachlor...	8.125	8.995	28302620	41988849	15.472	15.298
Target Compounds						
2) A alpha-BHC	0.000	4.341	0	11630088	N.D.	2.773 #
9) A Endosulfan I	0.000	6.160	0	5880479	N.D.	1.952 #
11) B alpha-Chl...	5.375	0.000	9767808	0	5.396	N.D. #
17) MA 4,4'-DDT	0.000	7.072	0	5988436	N.D.	2.618 #
23) Chlordane-1	0.000	4.938	0	1048168	N.D.	10.584 #
26) Chlordane-4	5.375	0.000	9767808	0	73.411	N.D. #

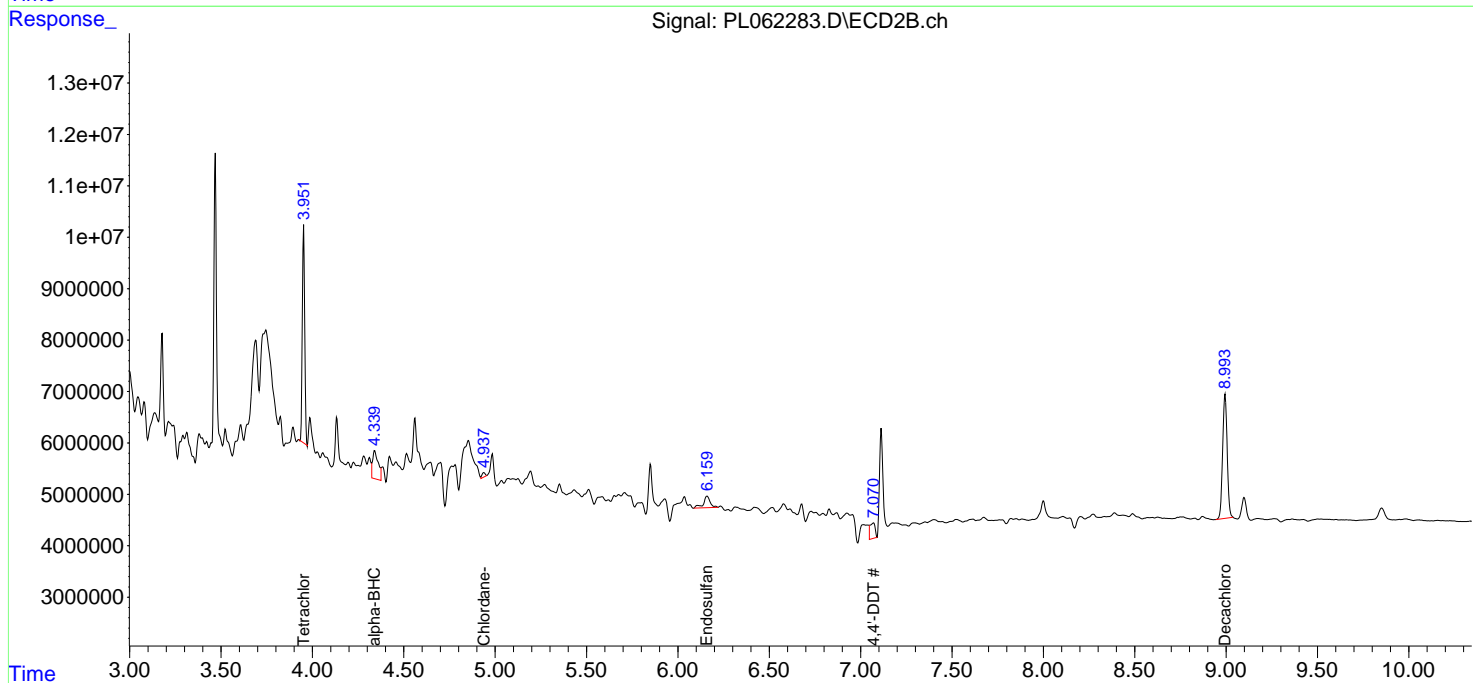
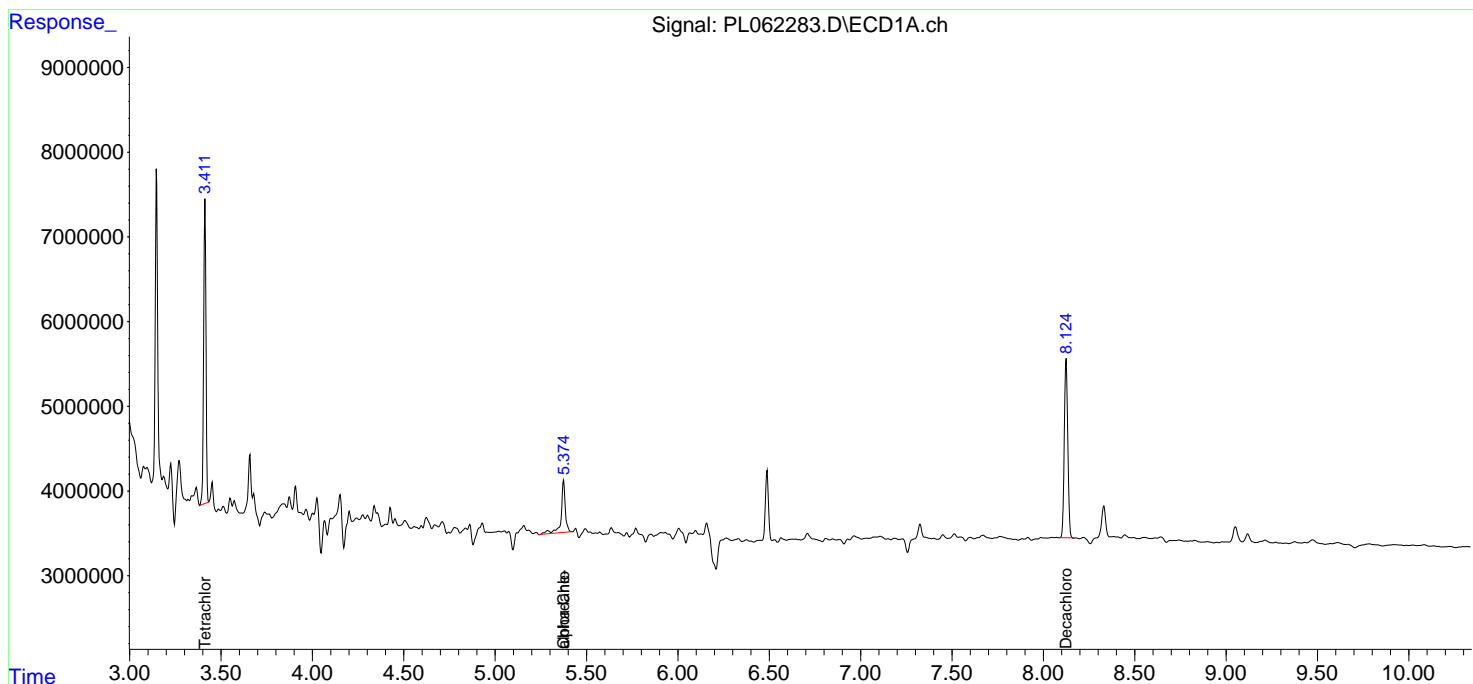
(f)=RT Delta > 1/2 Window (#)=Amounts differ by > 25% (m)=manual int.

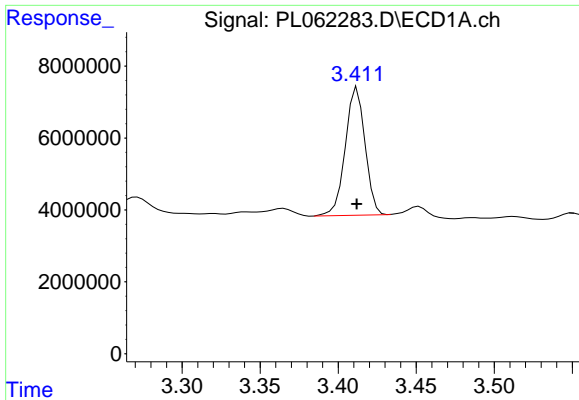
Data Path : Z:\pestpcbsrv\HPCHEM1\ECD_L\Data\PL101420\
 Data File : PL062283.D
 Signal(s) : Signal #1: ECD1A.ch Signal #2: ECD2B.ch
 Acq On : 13 Oct 2020 19:26
 Operator : DD\AJ
 Sample : L4356-01
 Misc :
 ALS Vial : 30 Sample Multiplier: 1

Instrument :
 ECD_L
 ClientSampled :

Integration File signal 1: autoint1.e
 Integration File signal 2: autoint2.e
 Quant Time: Oct 14 01:17:08 2020
 Quant Method : Z:\pestpcbsrv\HPCHEM1\ECD_L\methods\PL101320.M
 Quant Title : GC Extractables
 QLast Update : Tue Oct 13 05:04:40 2020
 Response via : Initial Calibration
 Integrator: ChemStation

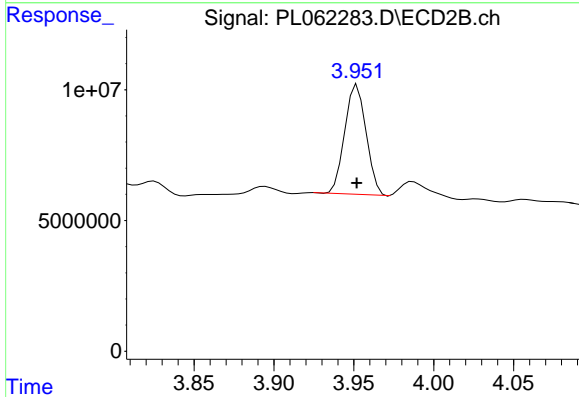
Volume Inj. : 1 µl
 Signal #1 Phase : ZB-MR2 Signal #2 Phase: ZB-MR1
 Signal #1 Info : 30M x 0.32mm x0.2 Signal #2 Info : 30M x 0.32mm x0.5µm



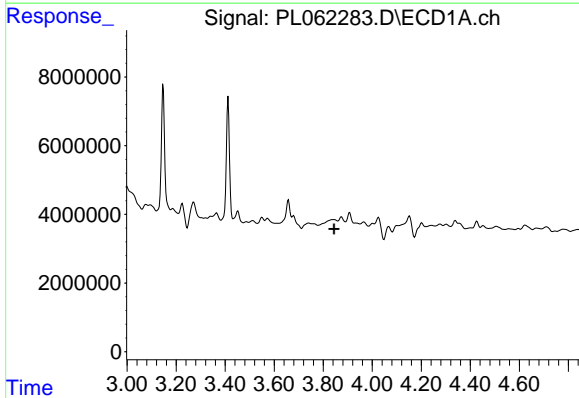


#1 Tetrachloro-m-xylene
 R.T.: 3.412 min
 Delta R.T.: 0.000 min
 Response: 31286282
 Conc: 17.97 ng/ml

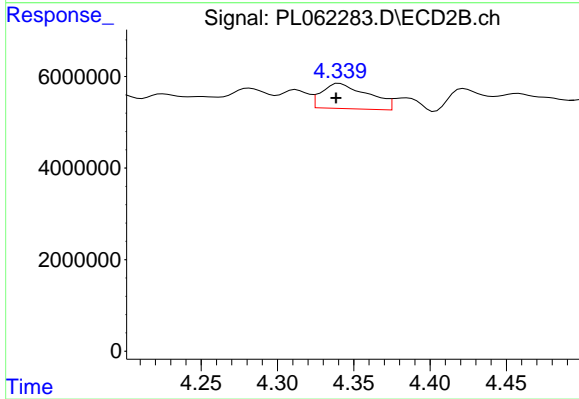
Instrument :
 ECD_L
 ClientSampleId :



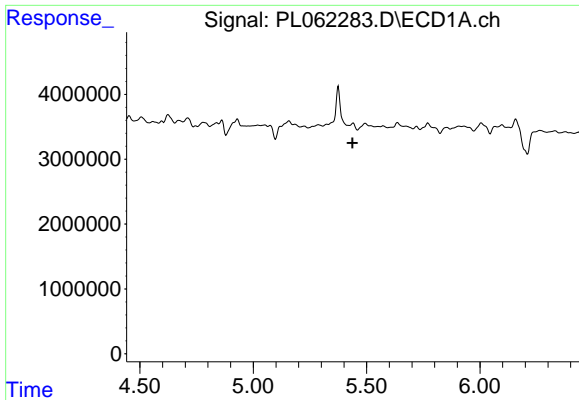
#1 Tetrachloro-m-xylene
 R.T.: 3.952 min
 Delta R.T.: 0.000 min
 Response: 39162091
 Conc: 13.90 ng/ml



#2 alpha-BHC
 R.T.: 0.000 min
 Exp R.T. : 3.845 min
 Response: 0
 Conc: N.D.



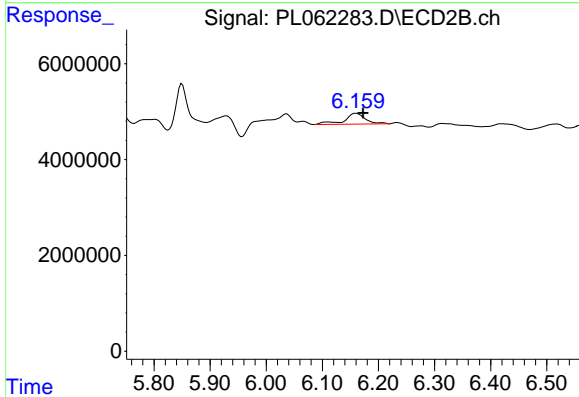
#2 alpha-BHC
 R.T.: 4.341 min
 Delta R.T.: 0.002 min
 Response: 11630088
 Conc: 2.77 ng/ml



#9 Endosulfan I

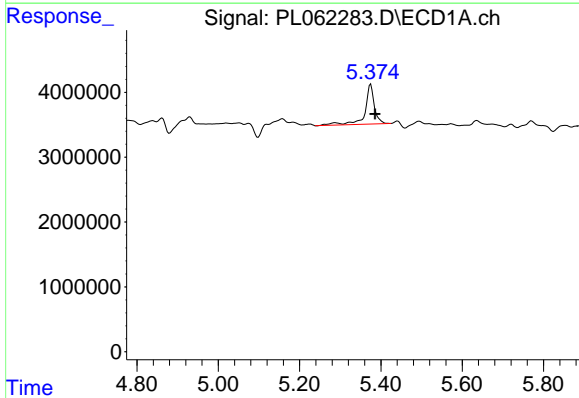
R.T.: 0.000 min
 Exp R.T.: 5.438 min
 Response: 0
 Conc: N.D.

Instrument :
 ECD_L
 ClientSampled :



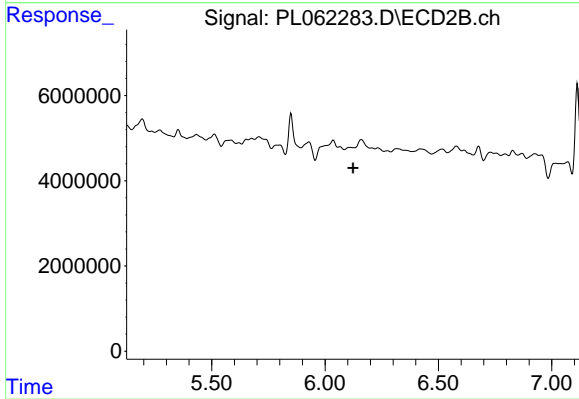
#9 Endosulfan I

R.T.: 6.160 min
 Delta R.T.: -0.013 min
 Response: 5880479
 Conc: 1.95 ng/ml



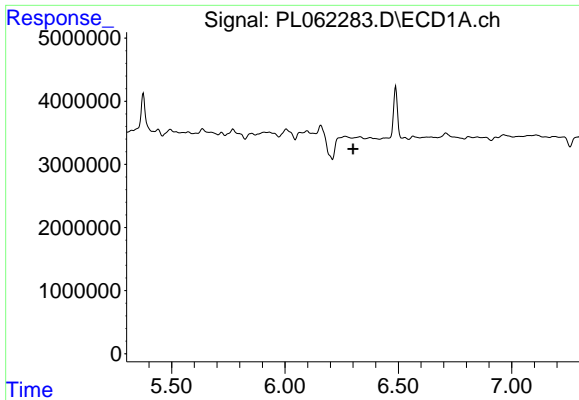
#11 alpha-Chlordane

R.T.: 5.375 min
 Delta R.T.: -0.011 min
 Response: 9767808
 Conc: 5.40 ng/ml



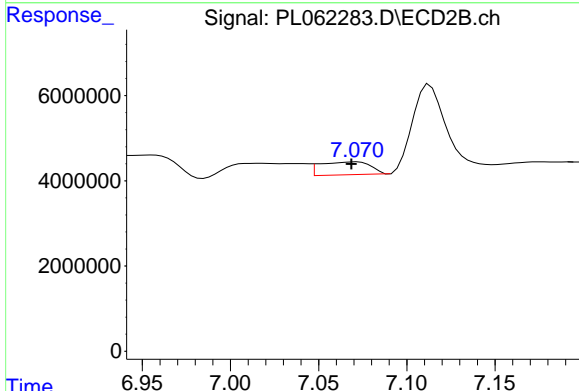
#11 alpha-Chlordane

R.T.: 0.000 min
 Exp R.T.: 6.123 min
 Response: 0
 Conc: N.D.

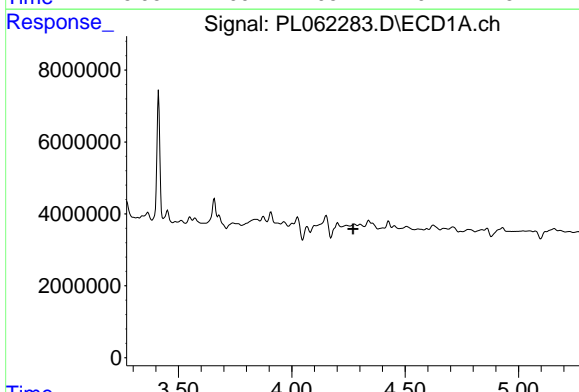


#17 4,4'-DDT
 R.T.: 0.000 min
 Exp R.T.: 6.300 min
 Response: 0
 Conc: N.D.

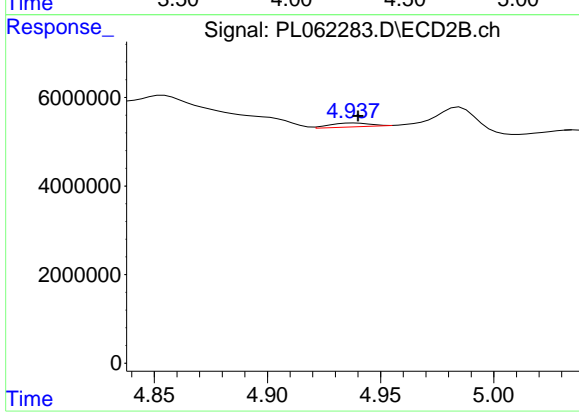
Instrument :
 ECD_L
 ClientSampled :



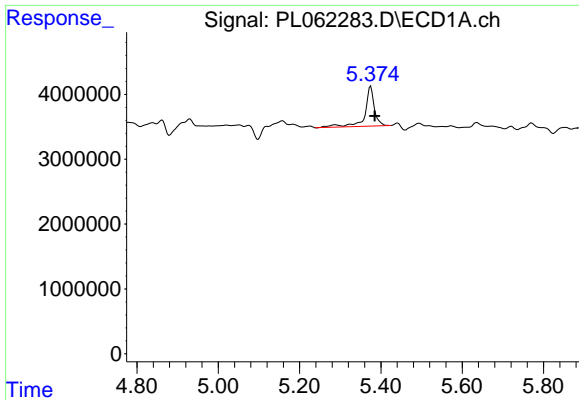
#17 4,4'-DDT
 R.T.: 7.072 min
 Delta R.T.: 0.003 min
 Response: 5988436
 Conc: 2.62 ng/ml



#23 Chlordane-1
 R.T.: 0.000 min
 Exp R.T.: 4.270 min
 Response: 0
 Conc: N.D.

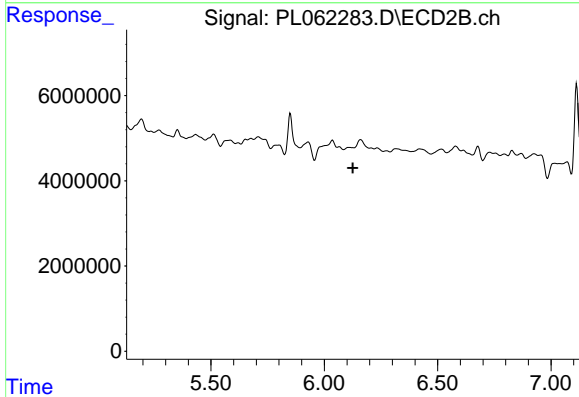


#23 Chlordane-1
 R.T.: 4.938 min
 Delta R.T.: -0.002 min
 Response: 1048168
 Conc: 10.58 ng/ml

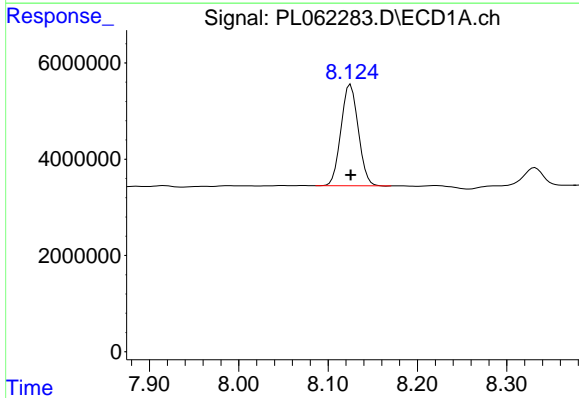


#26 Chlordane-4
 R.T.: 5.375 min
 Delta R.T.: -0.010 min
 Response: 9767808
 Conc: 73.41 ng/ml

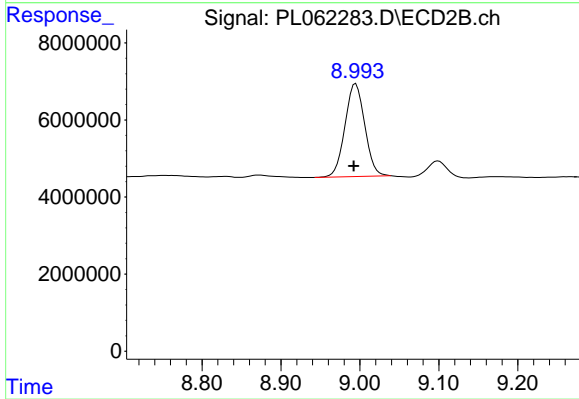
Instrument :
 ECD_L
 ClientSampled :



#26 Chlordane-4
 R.T.: 0.000 min
 Exp R.T. : 6.125 min
 Response: 0
 Conc: N.D.



#28 Decachlorobiphenyl
 R.T.: 8.125 min
 Delta R.T.: 0.000 min
 Response: 28302620
 Conc: 15.47 ng/ml



#28 Decachlorobiphenyl
 R.T.: 8.995 min
 Delta R.T.: 0.003 min
 Response: 41988849
 Conc: 15.30 ng/ml