

Data Path : Z:\pestpcbsrv\HPCHEM1\ECD_L\Data\PL101421\
 Data File : PL070303.D
 Signal(s) : Signal #1: ECD1A.ch Signal #2: ECD2B.ch
 Acq On : 13 Oct 2021 17:15
 Operator : AR\AJ
 Sample : M4078-01
 Misc :
 ALS Vial : 15 Sample Multiplier: 1

Instrument :
 ECD_L
 ClientSampleId :

Integration File signal 1: autoint1.e
 Integration File signal 2: autoint2.e
 Quant Time: Oct 14 05:34:50 2021
 Quant Method : Z:\pestpcbsrv\HPCHEM1\ECD_L\methods\PL092821.M
 Quant Title : GC Extractables
 QLast Update : Wed Sep 29 09:19:28 2021
 Response via : Initial Calibration
 Integrator: ChemStation

Volume Inj. : 1 µl
 Signal #1 Phase : ZB-MR2 Signal #2 Phase: ZB-MR1
 Signal #1 Info : 30M x 0.32mm x0.2 Signal #2 Info : 30M x 0.32mm x0.5µm

	Compound	RT#1	RT#2	Resp#1	Resp#2	ng/ml	ng/ml

System Monitoring Compounds							
1)	SA Tetrachlo...	4.626	5.564	7746285	16336490	15.481	12.352
28)	SA Decachlor...	10.394	11.488	8838786	16519581	12.773	13.651
Target Compounds							
2)	A alpha-BHC	0.000	6.150	0	385399	N.D.	0.197 #
3)	MA gamma-BHC...	5.770	6.542	24862	849047	0.036	0.463 #
5)	MB Aldrin	6.502	7.567	249944	2048167	0.346	1.189 #
6)	B beta-BHC	6.127	6.795	-43641	1926039	N.D.	2.240
7)	B delta-BHC	6.397	7.080	389745	503662	0.564	0.260 #
8)	B Heptachlo...	7.059	8.036	592840	-699049	0.845	N.D. #
9)	A Endosulfan I	0.000	8.429	0	1277038	N.D.	0.868 #
10)	B gamma-Chl...	7.329f	8.300	1839213	2120551	2.540	1.326 #
11)	B alpha-Chl...	7.411	8.381	1074861	3426277	1.476	2.172 #
12)	B 4,4'-DDE	7.627	8.554f	1013633	1891475	1.593	1.221
13)	MA Dieldrin	7.763	8.702f	773643	722542	1.126	0.473 #
14)	MA Endrin	8.066	8.993f	401221	6253271	0.635	4.978 #
15)	B Endosulfa...	8.357	9.214	282071	1844979	0.445	1.544 #
16)	A 4,4'-DDD	8.213	9.103	599244	377253	1.068	0.319 #
17)	MA 4,4'-DDT	8.470	9.425	1647324	1042364	2.693	0.798 #
18)	B Endrin al...	8.547	9.330	78004	1074390	0.157	1.114 #
19)	B Endosulfa...	8.796	9.584	1380639	22049	2.093	0.018 #
20)	A Methoxychlor	0.000	9.930f	0	615934	N.D.	0.952 #
21)	B Endrin ke...	9.328f	10.085	148900	2361590	0.195	1.765 #
22)	Mirex	9.489	10.537	212823	12330	0.323	0.013 #
23)	Chlordane-1	5.954	6.968f	631662	-566249	34.436	N.D. #
24)	Chlordane-2	6.668f	7.567f	45431	2048167	1.798	38.009 #
25)	Chlordane-3	7.329f	8.300	1839213	2120551	26.883	10.013 #
26)	Chlordane-4	7.411	8.381	1074861	3426277	14.708	13.481
27)	Chlordane-5	8.357	9.259	282071	472911	14.183	10.891

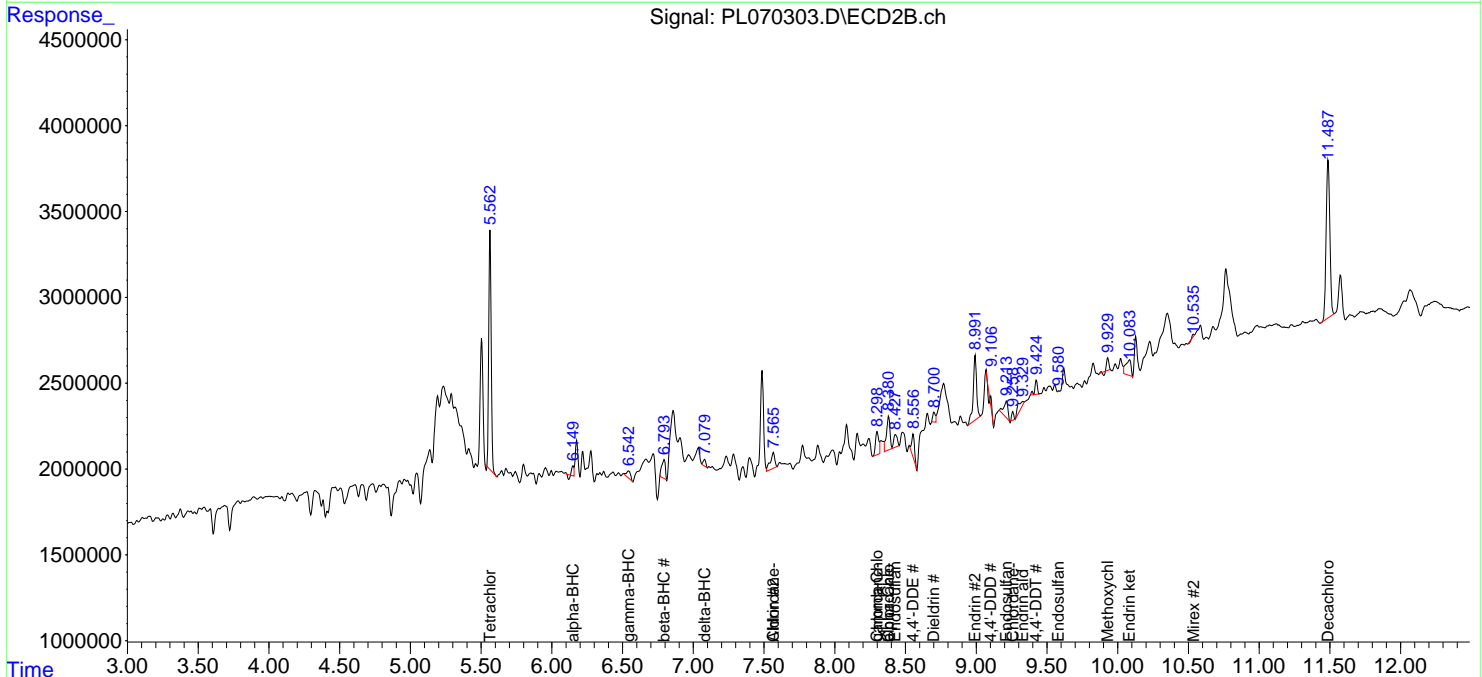
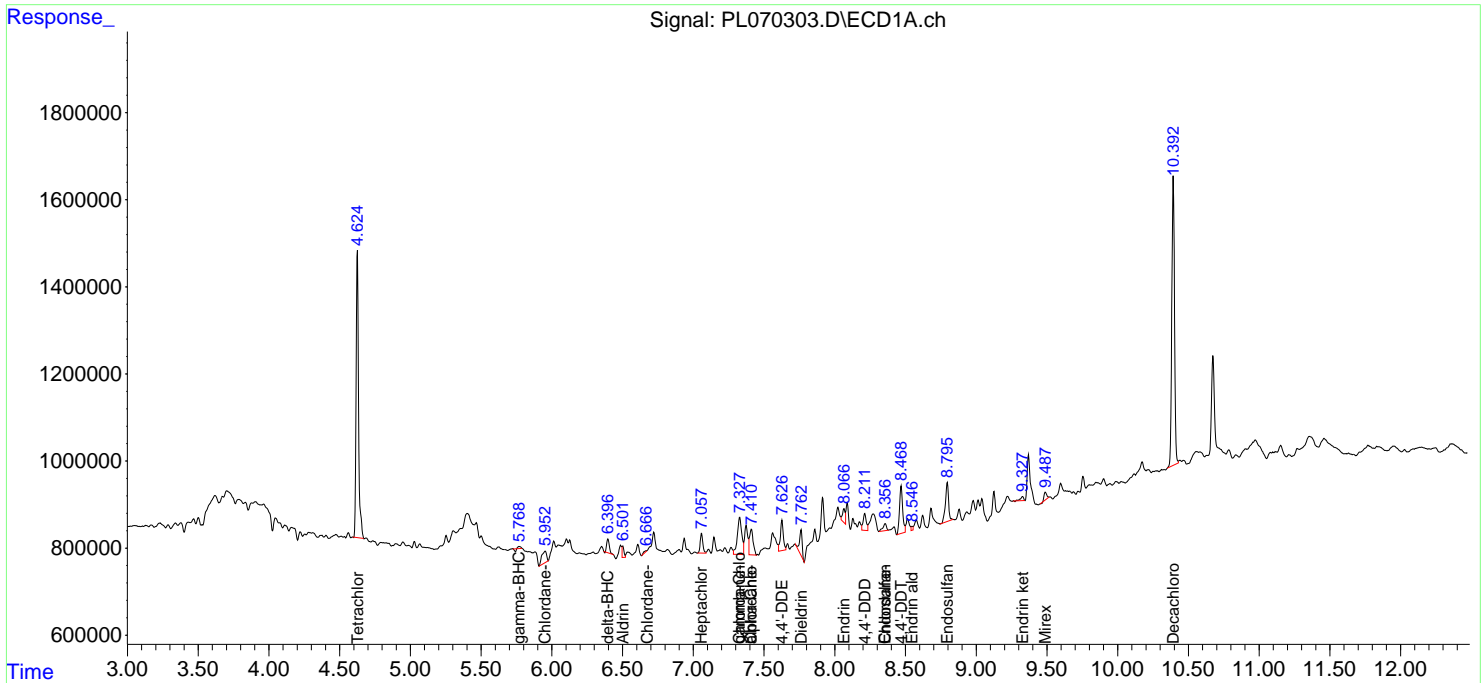
(f)=RT Delta > 1/2 Window (#)=Amounts differ by > 25% (m)=manual int.

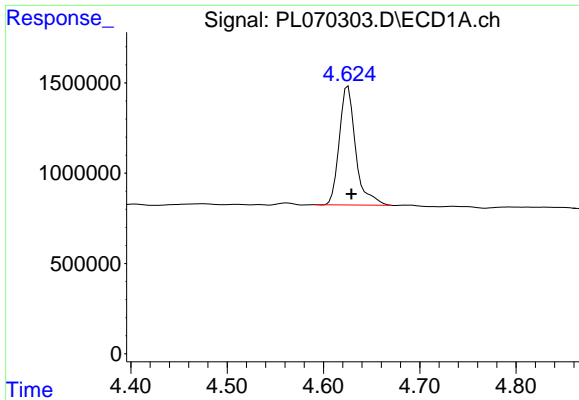
Data Path : Z:\pestpcbsrv\HPCHEM1\ECD_L\Data\PL101421\
 Data File : PL070303.D
 Signal(s) : Signal #1: ECD1A.ch Signal #2: ECD2B.ch
 Acq On : 13 Oct 2021 17:15
 Operator : AR\AJ
 Sample : M4078-01
 Misc :
 ALS Vial : 15 Sample Multiplier: 1

Instrument :
 ECD_L
 ClientSampled :

Integration File signal 1: autoint1.e
 Integration File signal 2: autoint2.e
 Quant Time: Oct 14 05:34:50 2021
 Quant Method : Z:\pestpcbsrv\HPCHEM1\ECD_L\methods\PL092821.M
 Quant Title : GC Extractables
 QLast Update : Wed Sep 29 09:19:28 2021
 Response via : Initial Calibration
 Integrator: ChemStation

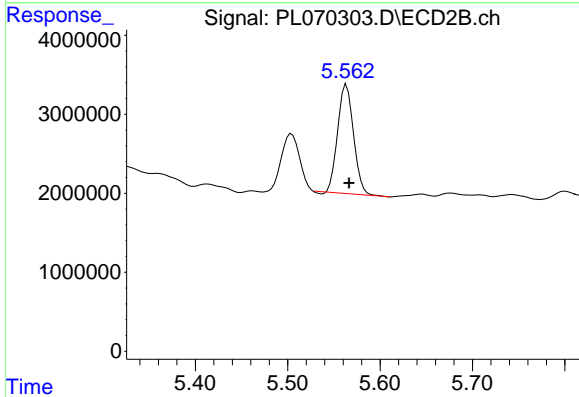
Volume Inj. : 1 µl
 Signal #1 Phase : ZB-MR2 Signal #2 Phase: ZB-MR1
 Signal #1 Info : 30M x 0.32mm x0.2 Signal #2 Info : 30M x 0.32mm x0.5µm



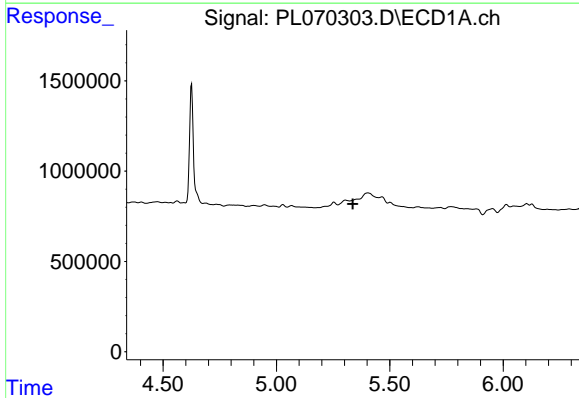


#1 Tetrachloro-m-xylene
 R.T.: 4.626 min
 Delta R.T.: -0.003 min
 Response: 7746285
 Conc: 15.48 ng/ml

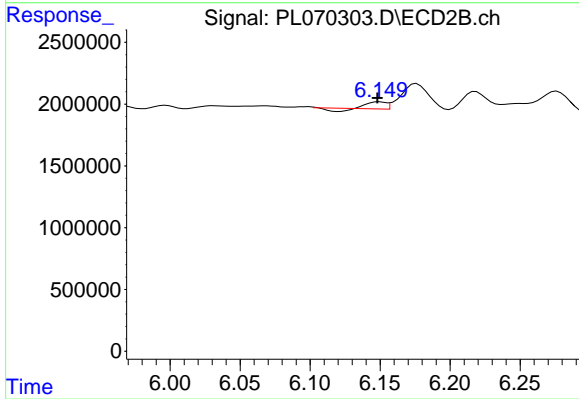
Instrument :
 ECD_L
 ClientSampleId :



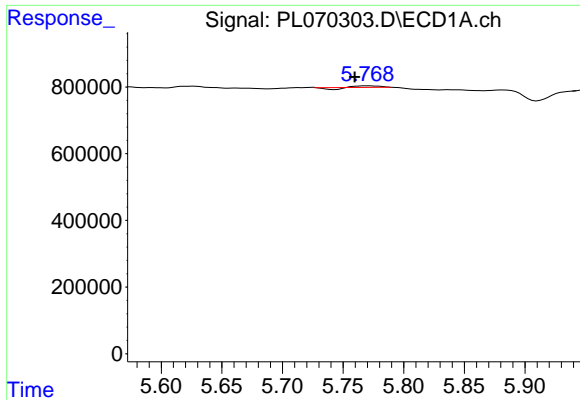
#1 Tetrachloro-m-xylene
 R.T.: 5.564 min
 Delta R.T.: -0.003 min
 Response: 16336490
 Conc: 12.35 ng/ml



#2 alpha-BHC
 R.T.: 0.000 min
 Exp R.T. : 5.336 min
 Response: 0
 Conc: N.D.

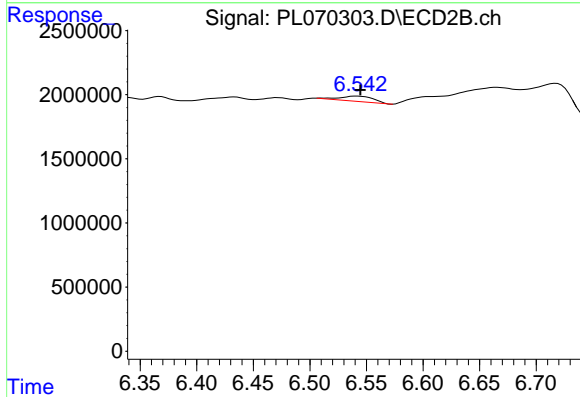


#2 alpha-BHC
 R.T.: 6.150 min
 Delta R.T.: 0.002 min
 Response: 385399
 Conc: 0.20 ng/ml

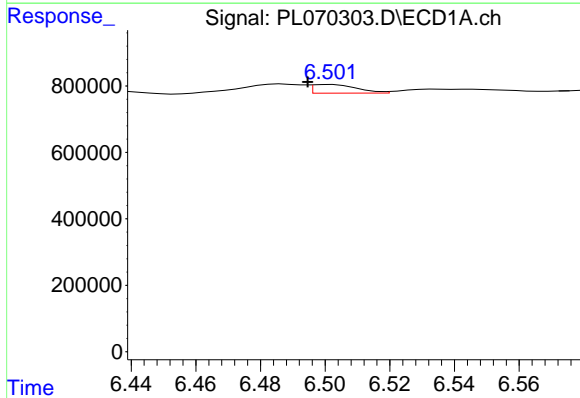


#3 gamma-BHC (Lindane)
 R.T.: 5.770 min
 Delta R.T.: 0.010 min
 Response: 24862
 Conc: 0.04 ng/ml

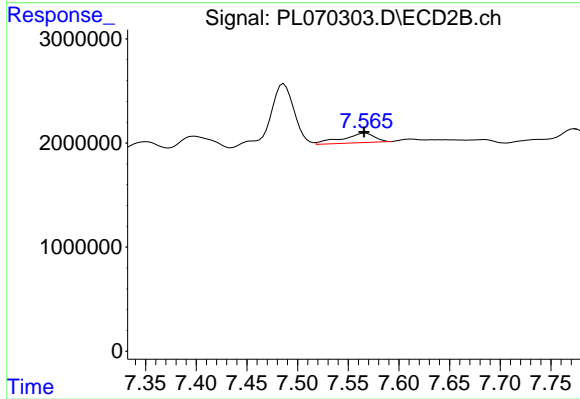
Instrument :
 ECD_L
 ClientSampled :



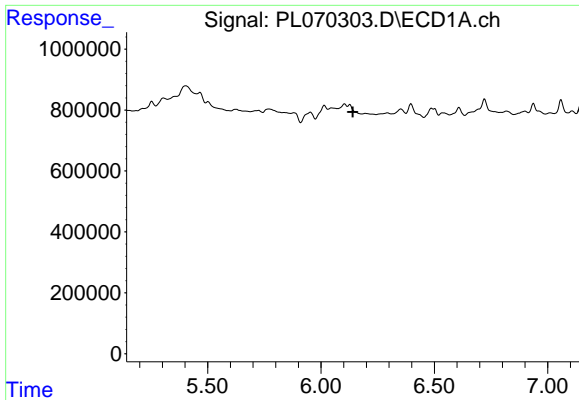
#3 gamma-BHC (Lindane)
 R.T.: 6.542 min
 Delta R.T.: -0.003 min
 Response: 849047
 Conc: 0.46 ng/ml



#5 Aldrin
 R.T.: 6.502 min
 Delta R.T.: 0.007 min
 Response: 249944
 Conc: 0.35 ng/ml

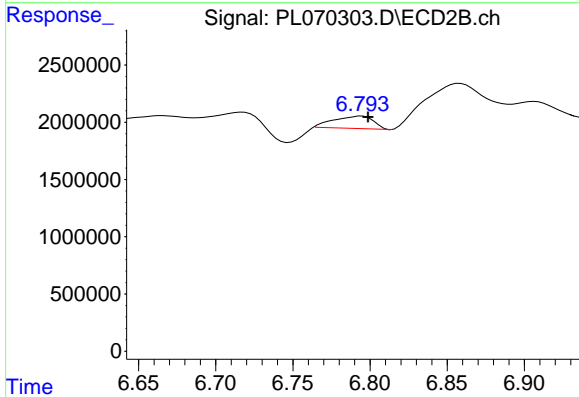


#5 Aldrin
 R.T.: 7.567 min
 Delta R.T.: 0.000 min
 Response: 2048167
 Conc: 1.19 ng/ml

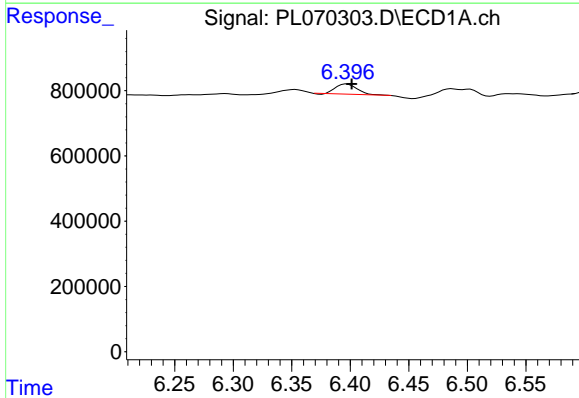


#6 beta-BHC
 R.T.: 6.127 min
 Delta R.T.: -0.013 min
 Response: -43641
 Conc: N.D.

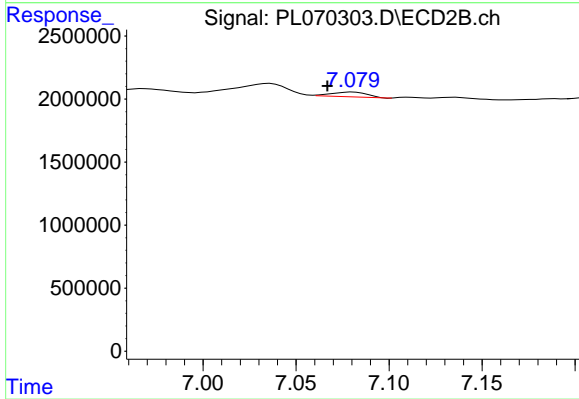
Instrument :
 ECD_L
 ClientSampleId :



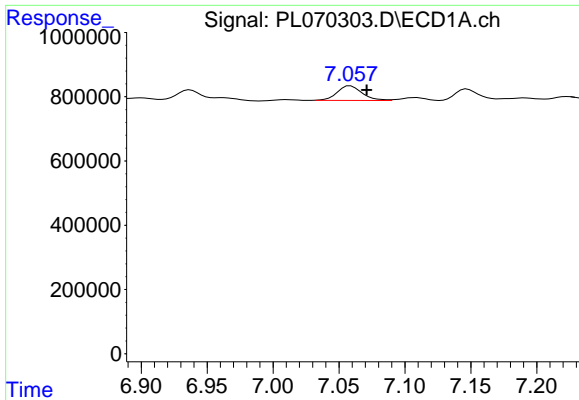
#6 beta-BHC
 R.T.: 6.795 min
 Delta R.T.: -0.004 min
 Response: 1926039
 Conc: 2.24 ng/ml



#7 delta-BHC
 R.T.: 6.397 min
 Delta R.T.: -0.004 min
 Response: 389745
 Conc: 0.56 ng/ml

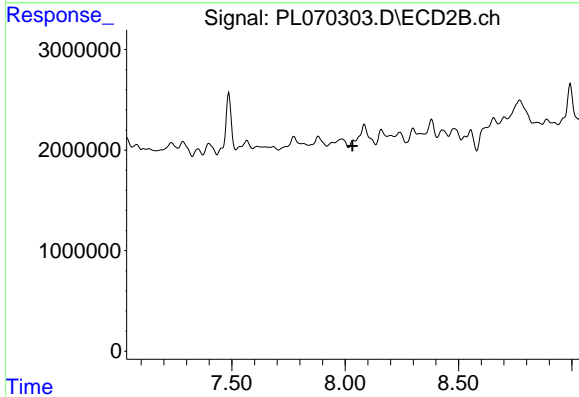


#7 delta-BHC
 R.T.: 7.080 min
 Delta R.T.: 0.013 min
 Response: 503662
 Conc: 0.26 ng/ml

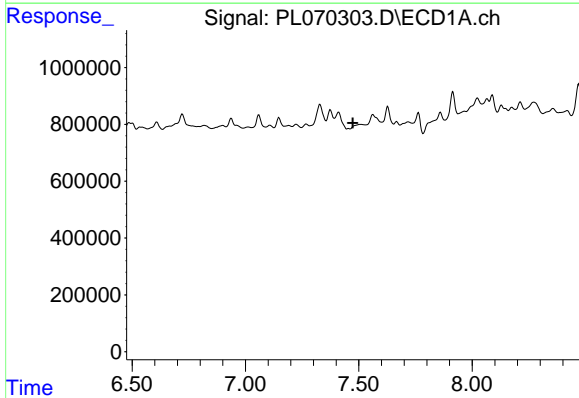


#8 Heptachlor epoxide
 R.T.: 7.059 min
 Delta R.T.: -0.013 min
 Response: 592840
 Conc: 0.85 ng/ml

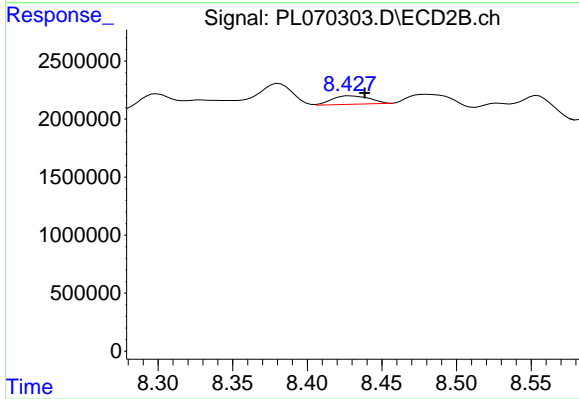
Instrument :
 ECD_L
 ClientSampleId :



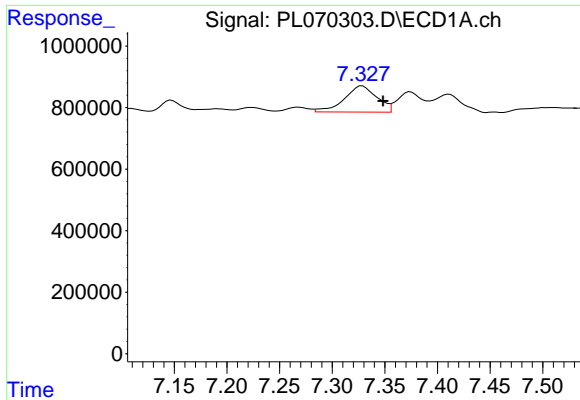
#8 Heptachlor epoxide
 R.T.: 8.036 min
 Delta R.T.: 0.004 min
 Response: -699049
 Conc: N.D.



#9 Endosulfan I
 R.T.: 0.000 min
 Exp R.T. : 7.474 min
 Response: 0
 Conc: N.D.

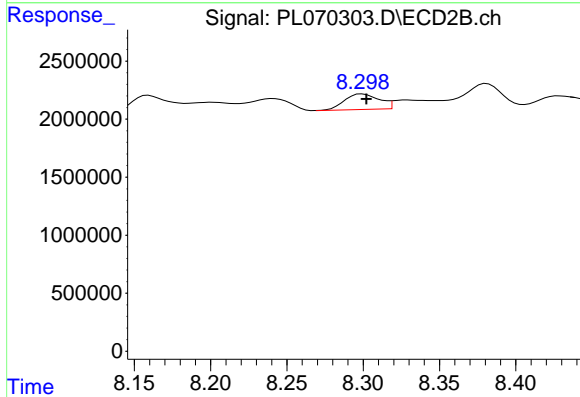


#9 Endosulfan I
 R.T.: 8.429 min
 Delta R.T.: -0.010 min
 Response: 1277038
 Conc: 0.87 ng/ml

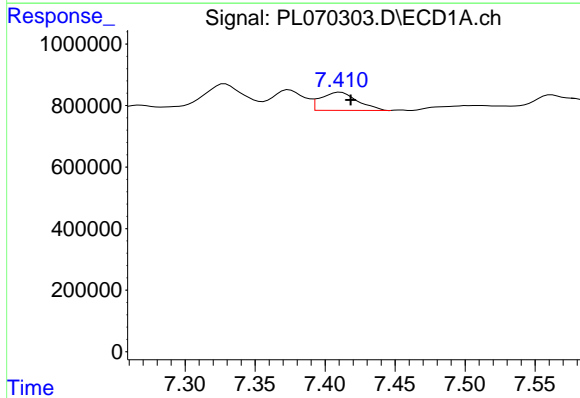


#10 gamma-Chlordane
 R.T.: 7.329 min
 Delta R.T.: -0.020 min
 Response: 1839213
 Conc: 2.54 ng/ml

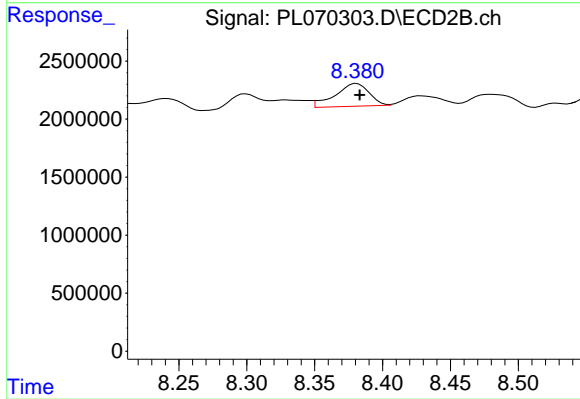
Instrument :
 ECD_L
 ClientSampleId :



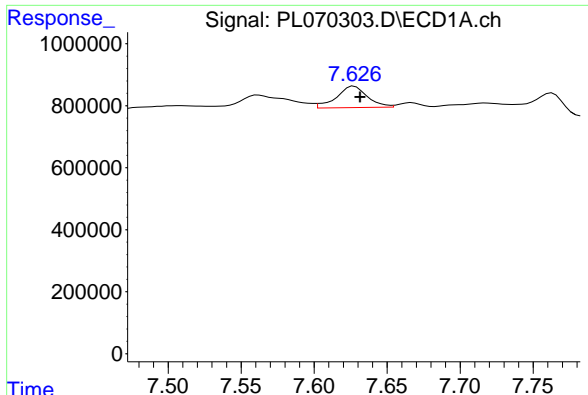
#10 gamma-Chlordane
 R.T.: 8.300 min
 Delta R.T.: -0.003 min
 Response: 2120551
 Conc: 1.33 ng/ml



#11 alpha-Chlordane
 R.T.: 7.411 min
 Delta R.T.: -0.007 min
 Response: 1074861
 Conc: 1.48 ng/ml

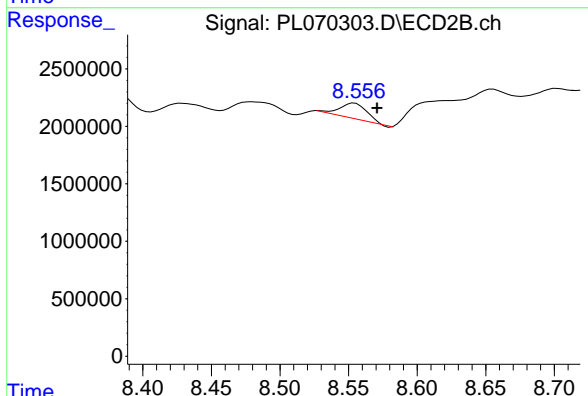


#11 alpha-Chlordane
 R.T.: 8.381 min
 Delta R.T.: -0.002 min
 Response: 3426277
 Conc: 2.17 ng/ml

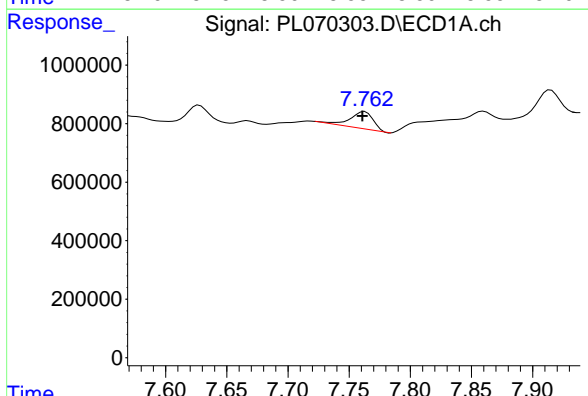


#12 4,4'-DDE
 R.T.: 7.627 min
 Delta R.T.: -0.004 min
 Response: 1013633
 Conc: 1.59 ng/ml

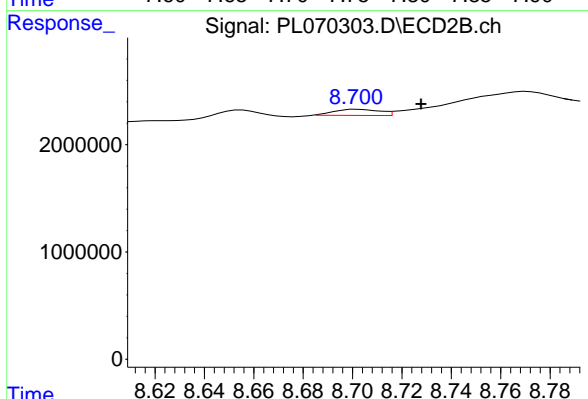
Instrument :
 ECD_L
 ClientSampleId :



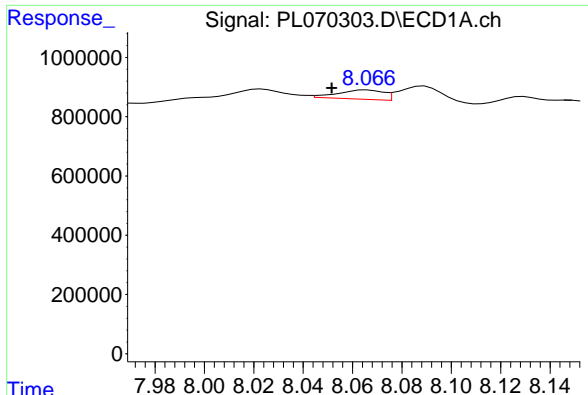
#12 4,4'-DDE
 R.T.: 8.554 min
 Delta R.T.: -0.017 min
 Response: 1891475
 Conc: 1.22 ng/ml



#13 Dieldrin
 R.T.: 7.763 min
 Delta R.T.: 0.002 min
 Response: 773643
 Conc: 1.13 ng/ml



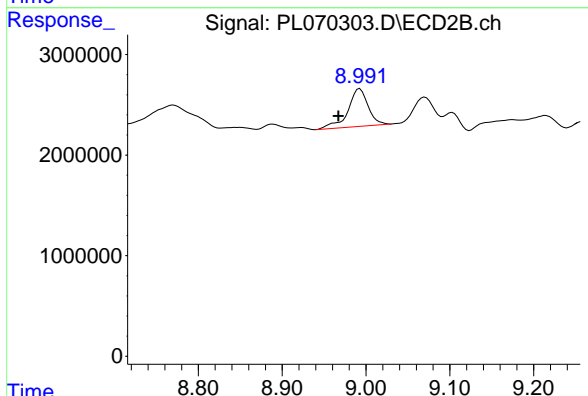
#13 Dieldrin
 R.T.: 8.702 min
 Delta R.T.: -0.025 min
 Response: 722542
 Conc: 0.47 ng/ml



#14 Endrin

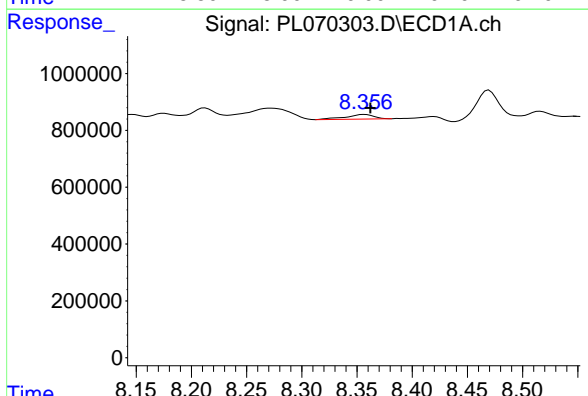
R.T.: 8.066 min
 Delta R.T.: 0.014 min
 Response: 401221
 Conc: 0.63 ng/ml

Instrument :
 ECD_L
 ClientSampleId :



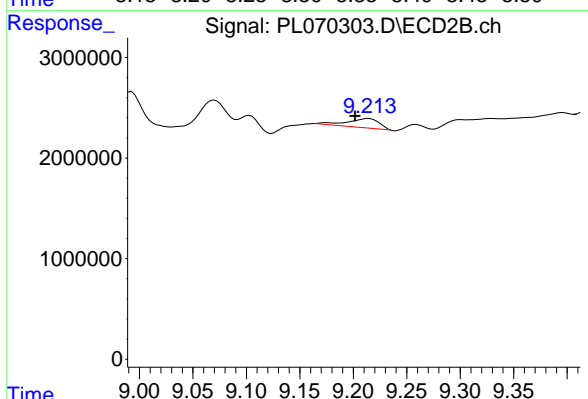
#14 Endrin

R.T.: 8.993 min
 Delta R.T.: 0.026 min
 Response: 6253271
 Conc: 4.98 ng/ml



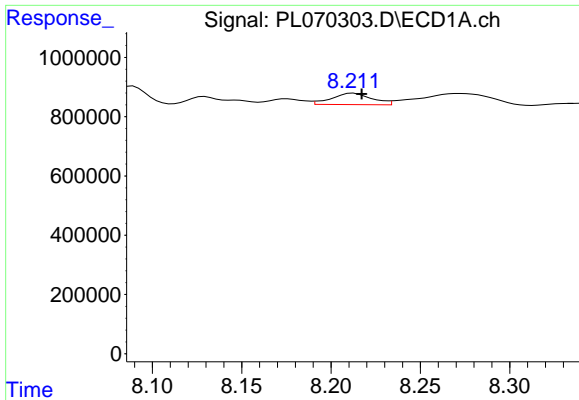
#15 Endosulfan II

R.T.: 8.357 min
 Delta R.T.: -0.005 min
 Response: 282071
 Conc: 0.44 ng/ml



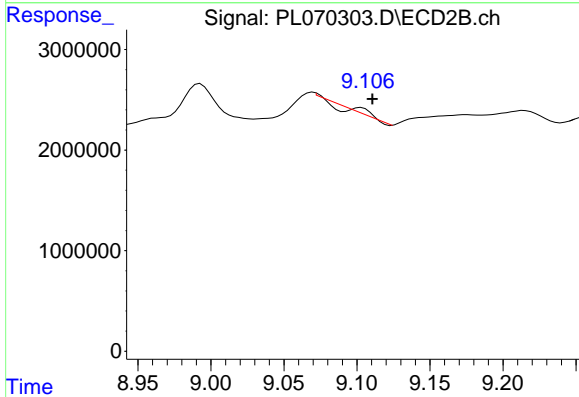
#15 Endosulfan II

R.T.: 9.214 min
 Delta R.T.: 0.013 min
 Response: 1844979
 Conc: 1.54 ng/ml

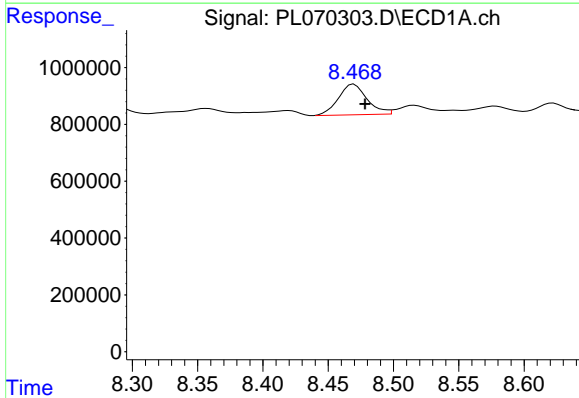


#16 4,4'-DDD
 R.T.: 8.213 min
 Delta R.T.: -0.005 min
 Response: 599244
 Conc: 1.07 ng/ml

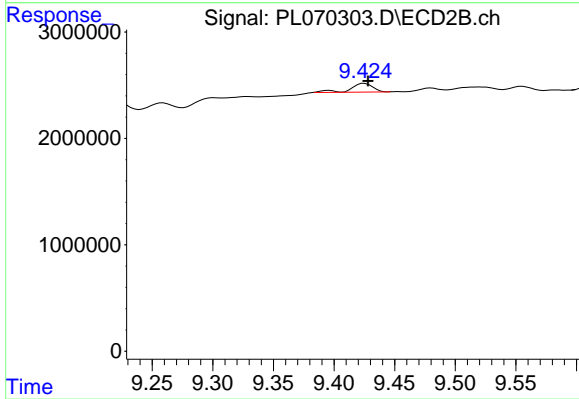
Instrument :
 ECD_L
 ClientSampleId :



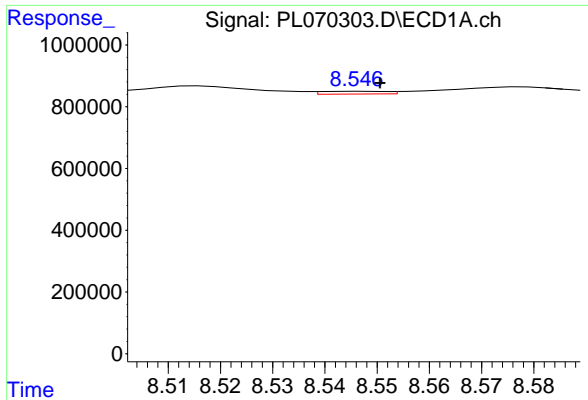
#16 4,4'-DDD
 R.T.: 9.103 min
 Delta R.T.: -0.008 min
 Response: 377253
 Conc: 0.32 ng/ml



#17 4,4'-DDT
 R.T.: 8.470 min
 Delta R.T.: -0.009 min
 Response: 1647324
 Conc: 2.69 ng/ml

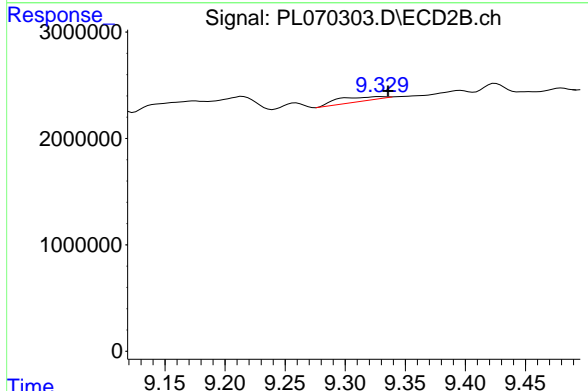


#17 4,4'-DDT
 R.T.: 9.425 min
 Delta R.T.: -0.003 min
 Response: 1042364
 Conc: 0.80 ng/ml

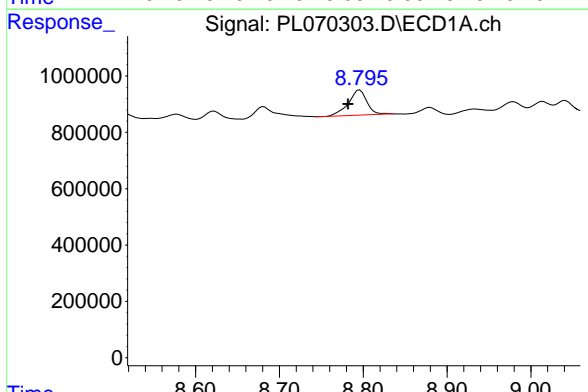


#18 Endrin aldehyde
 R.T.: 8.547 min
 Delta R.T.: -0.004 min
 Response: 78004
 Conc: 0.16 ng/ml

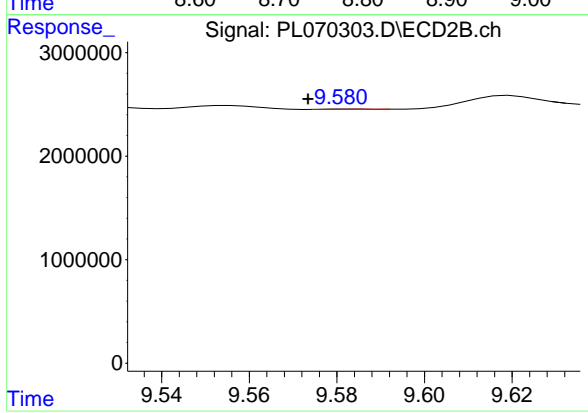
Instrument :
 ECD_L
 ClientSampleId :



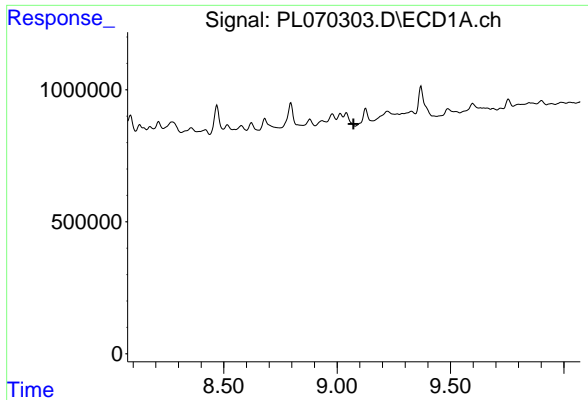
#18 Endrin aldehyde
 R.T.: 9.330 min
 Delta R.T.: -0.005 min
 Response: 1074390
 Conc: 1.11 ng/ml



#19 Endosulfan Sulfate
 R.T.: 8.796 min
 Delta R.T.: 0.014 min
 Response: 1380639
 Conc: 2.09 ng/ml

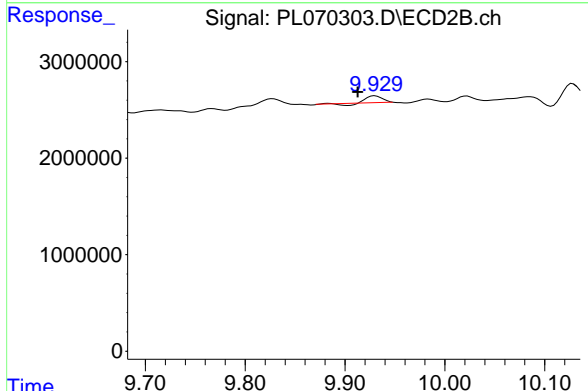


#19 Endosulfan Sulfate
 R.T.: 9.584 min
 Delta R.T.: 0.010 min
 Response: 22049
 Conc: 0.02 ng/ml

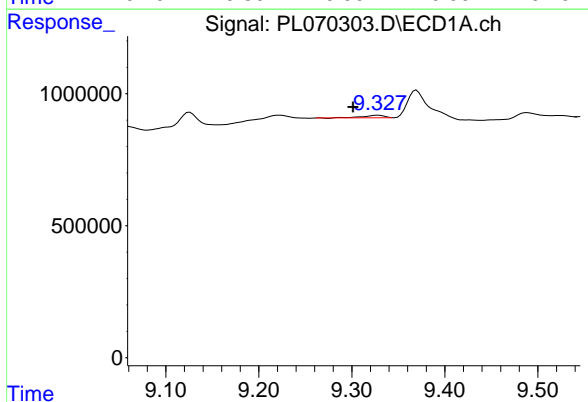


#20 Methoxychlor
 R.T.: 0.000 min
 Exp R.T.: 9.073 min
 Response: 0
 Conc: N.D.

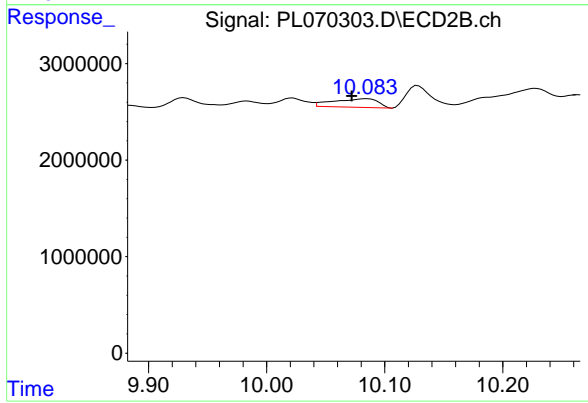
Instrument :
 ECD_L
 ClientSampleId :



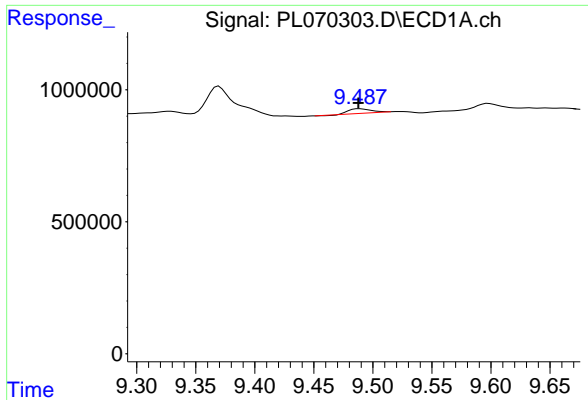
#20 Methoxychlor
 R.T.: 9.930 min
 Delta R.T.: 0.017 min
 Response: 615934
 Conc: 0.95 ng/ml



#21 Endrin ketone
 R.T.: 9.328 min
 Delta R.T.: 0.027 min
 Response: 148900
 Conc: 0.19 ng/ml

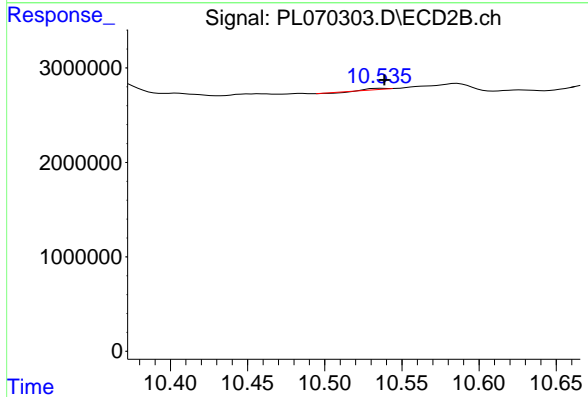


#21 Endrin ketone
 R.T.: 10.085 min
 Delta R.T.: 0.013 min
 Response: 2361590
 Conc: 1.77 ng/ml

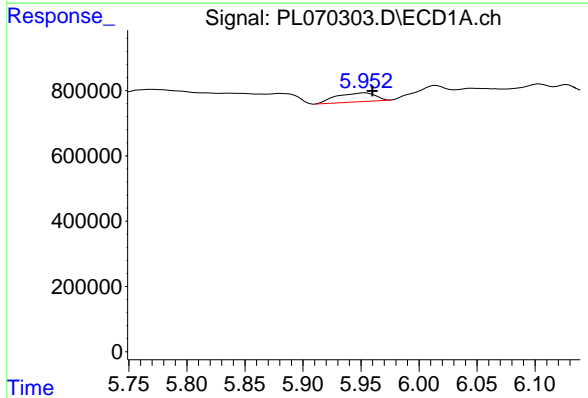


#22 Mirex
 R.T.: 9.489 min
 Delta R.T.: 0.001 min
 Response: 212823
 Conc: 0.32 ng/ml

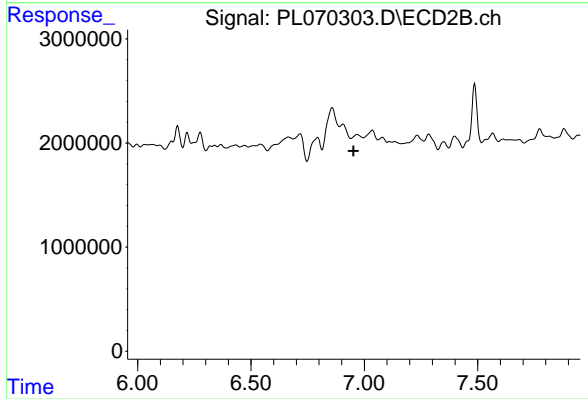
Instrument :
 ECD_L
 ClientSampled :



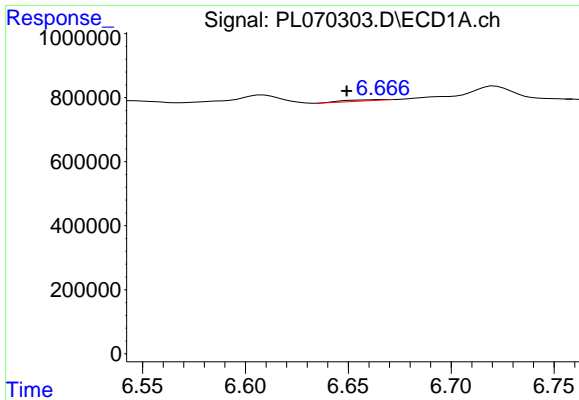
#22 Mirex
 R.T.: 10.537 min
 Delta R.T.: -0.002 min
 Response: 12330
 Conc: 0.01 ng/ml



#23 Chlordane-1
 R.T.: 5.954 min
 Delta R.T.: -0.006 min
 Response: 631662
 Conc: 34.44 ng/ml

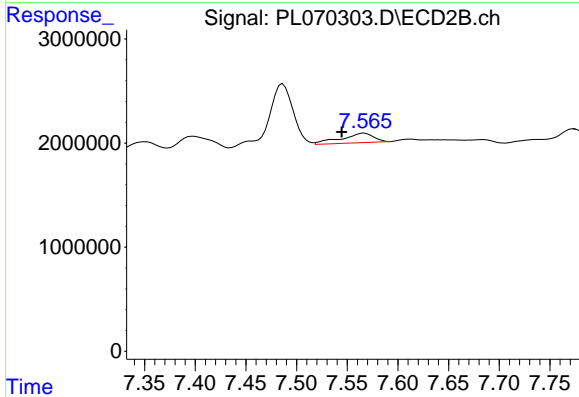


#23 Chlordane-1
 R.T.: 6.968 min
 Delta R.T.: 0.016 min
 Response: -566249
 Conc: N.D.

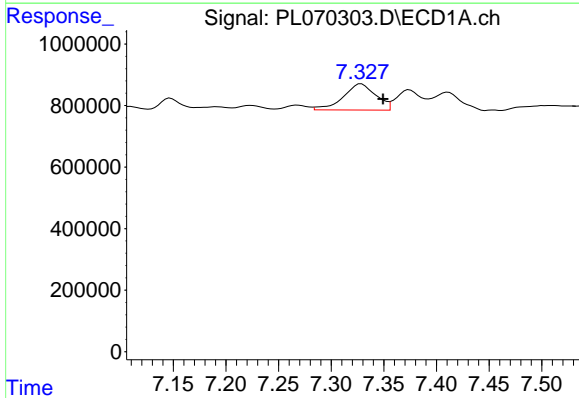


#24 Chlordane-2
 R.T.: 6.668 min
 Delta R.T.: 0.018 min
 Response: 45431
 Conc: 1.80 ng/ml

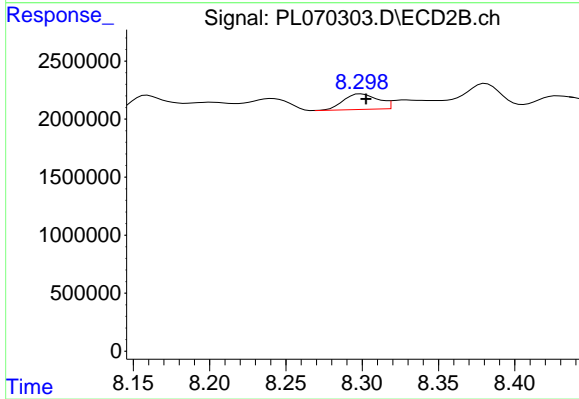
Instrument :
 ECD_L
 ClientSampleId :



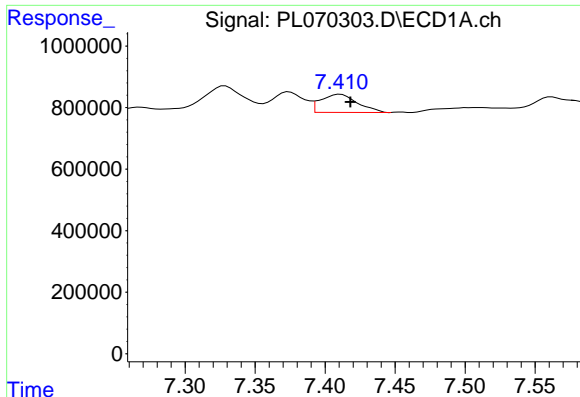
#24 Chlordane-2
 R.T.: 7.567 min
 Delta R.T.: 0.022 min
 Response: 2048167
 Conc: 38.01 ng/ml



#25 Chlordane-3
 R.T.: 7.329 min
 Delta R.T.: -0.021 min
 Response: 1839213
 Conc: 26.88 ng/ml



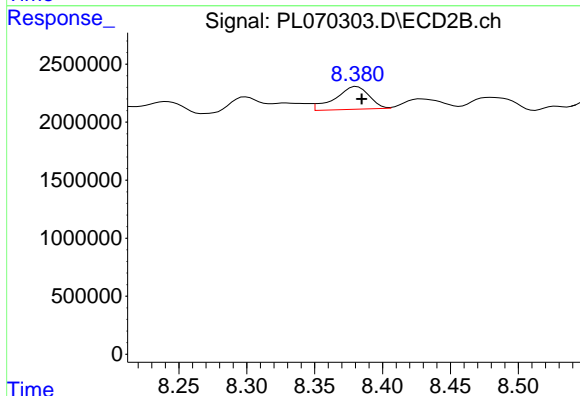
#25 Chlordane-3
 R.T.: 8.300 min
 Delta R.T.: -0.003 min
 Response: 2120551
 Conc: 10.01 ng/ml



#26 Chlordane-4

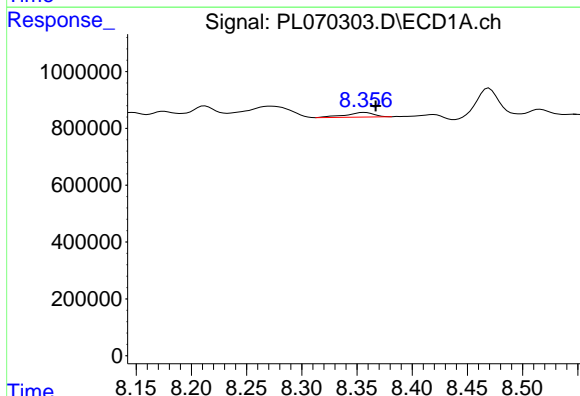
R.T.: 7.411 min
 Delta R.T.: -0.007 min
 Response: 1074861
 Conc: 14.71 ng/ml

Instrument :
 ECD_L
 ClientSampleId :



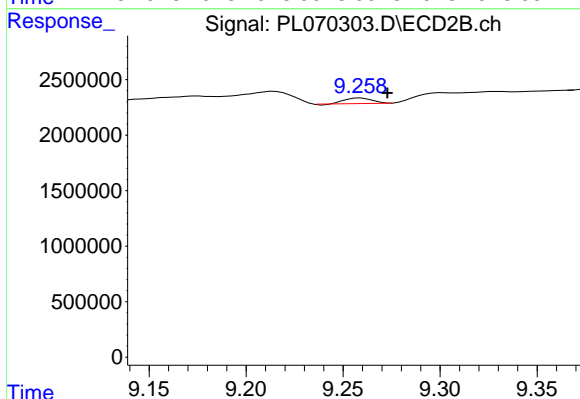
#26 Chlordane-4

R.T.: 8.381 min
 Delta R.T.: -0.004 min
 Response: 3426277
 Conc: 13.48 ng/ml



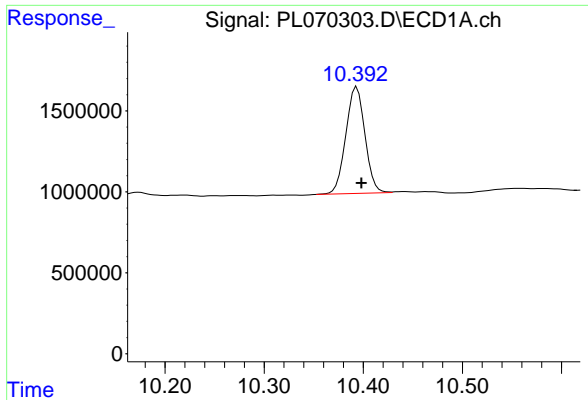
#27 Chlordane-5

R.T.: 8.357 min
 Delta R.T.: -0.010 min
 Response: 282071
 Conc: 14.18 ng/ml



#27 Chlordane-5

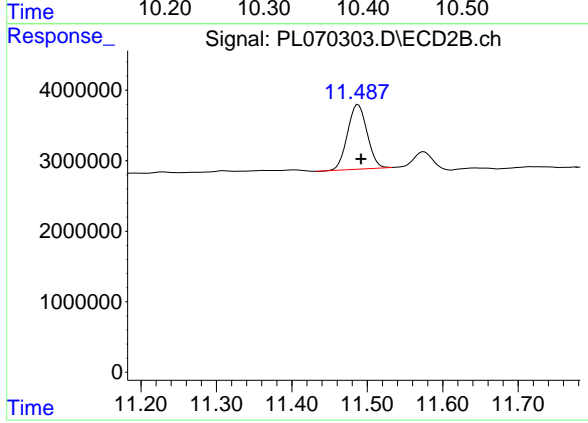
R.T.: 9.259 min
 Delta R.T.: -0.014 min
 Response: 472911
 Conc: 10.89 ng/ml



#28 Decachlorobiphenyl

R.T.: 10.394 min
Delta R.T.: -0.005 min
Response: 8838786
Conc: 12.77 ng/ml

Instrument :
ECD_L
ClientSampled :



#28 Decachlorobiphenyl

R.T.: 11.488 min
Delta R.T.: -0.004 min
Response: 16519581
Conc: 13.65 ng/ml