

Data Path : Z:\pestpcbsrv\HPCHEM1\ECD_L\Data\PL101421\
 Data File : PL070305.D
 Signal(s) : Signal #1: ECD1A.ch Signal #2: ECD2B.ch
 Acq On : 13 Oct 2021 17:49
 Operator : AR\AJ
 Sample : I.BLK
 Misc :
 ALS Vial : 2 Sample Multiplier: 1

Instrument :
 ECD_L
 ClientSampleId :

Integration File signal 1: autoint1.e
 Integration File signal 2: autoint2.e
 Quant Time: Oct 14 05:35:07 2021
 Quant Method : Z:\pestpcbsrv\HPCHEM1\ECD_L\methods\PL092821.M
 Quant Title : GC Extractables
 QLast Update : Wed Sep 29 09:19:28 2021
 Response via : Initial Calibration
 Integrator: ChemStation

Volume Inj. : 1 µl
 Signal #1 Phase : ZB-MR2 Signal #2 Phase: ZB-MR1
 Signal #1 Info : 30M x 0.32mm x0.2 Signal #2 Info : 30M x 0.32mm x0.5µm

	Compound	RT#1	RT#2	Resp#1	Resp#2	ng/ml	ng/ml

System Monitoring Compounds							
1)	SA Tetrachlo...	4.625	5.564	10591610	26966598	21.167	20.389
28)	SA Decachlor...	10.394	11.488	12977270	24482313	18.754	20.230
Target Compounds							
2)	A alpha-BHC	5.310f	0.000	279227	0	0.377	N.D. #
3)	MA gamma-BHC...	5.765	6.539	91888	42377	0.132	0.023 #
7)	B delta-BHC	0.000	7.082f	0	2063056	N.D.	1.066 #
9)	A Endosulfan I	0.000	8.438	0	98615	N.D.	0.067 #
10)	B gamma-Chl...	7.319f	8.298	33177	225338	0.046	0.141 #
11)	B alpha-Chl...	7.395f	8.380	53510	68072	0.073	0.043 #
12)	B 4,4'-DDE	0.000	8.559	0	29504	N.D.	0.019 #
13)	MA Dieldrin	7.761	8.731	81750	409370	0.119	0.268 #
14)	MA Endrin	8.071f	8.980	308489	171395	0.488	0.136 #
15)	B Endosulfa...	0.000	9.216	0	148192	N.D.	0.124 #
16)	A 4,4'-DDD	8.217	9.111	36857	48303	0.066	0.041 #
17)	MA 4,4'-DDT	8.466	0.000	80368	0	0.131	N.D. #
18)	B Endrin al...	8.577f	9.332	76723	103413	0.155	0.107 #
19)	B Endosulfa...	8.781	9.574	89745	102355	0.136	0.084 #
20)	A Methoxychlor	9.075	0.000	26454	0	0.071	N.D. #
21)	B Endrin ke...	0.000	10.093f	0	2390795	N.D.	1.787 #
22)	Mirex	0.000	10.556f	0	1662802	N.D.	1.688 #
23)	Chlordane-1	0.000	6.965	0	86155	N.D.	1.877 #
24)	Chlordane-2	6.636	7.519f	40533	122588	1.604	2.275 #
25)	Chlordane-3	7.319f	8.298	33177	225338	0.485	1.064 #
26)	Chlordane-4	7.395f	8.380	53510	68072	0.732	0.268 #

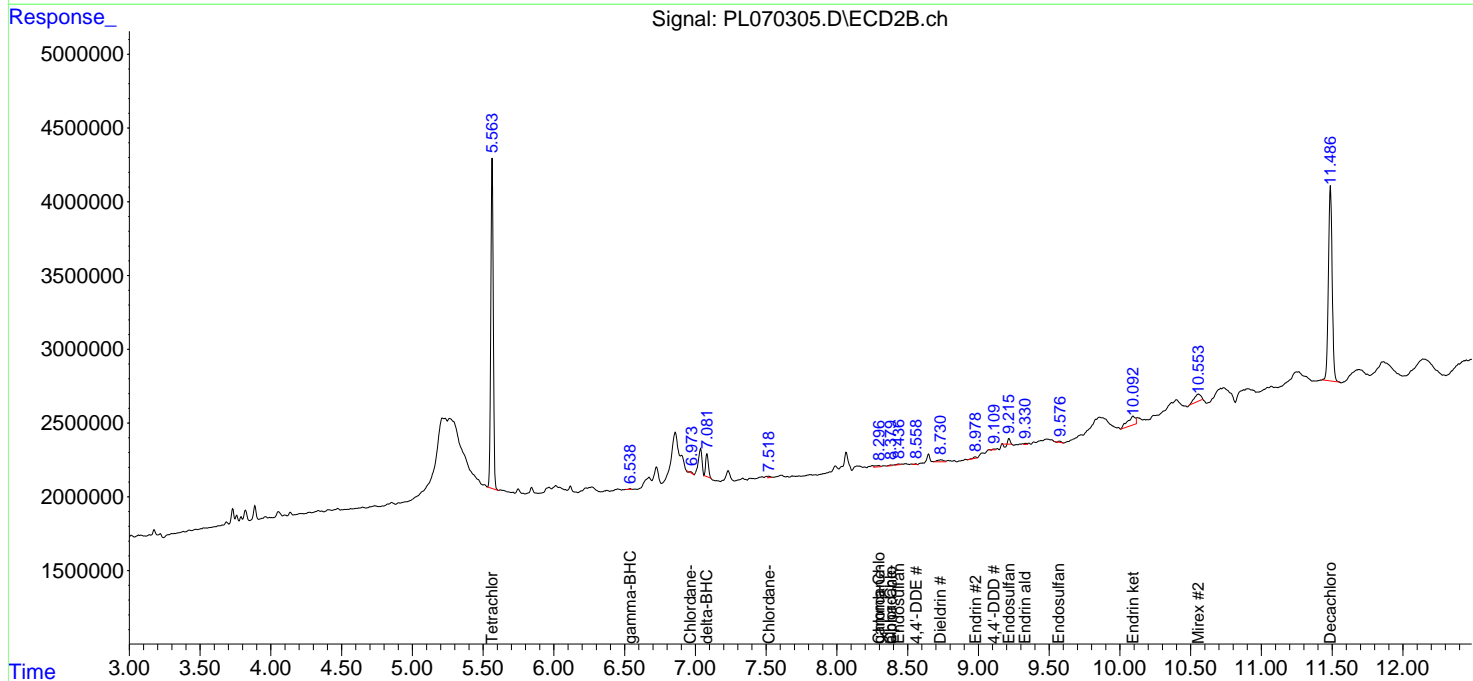
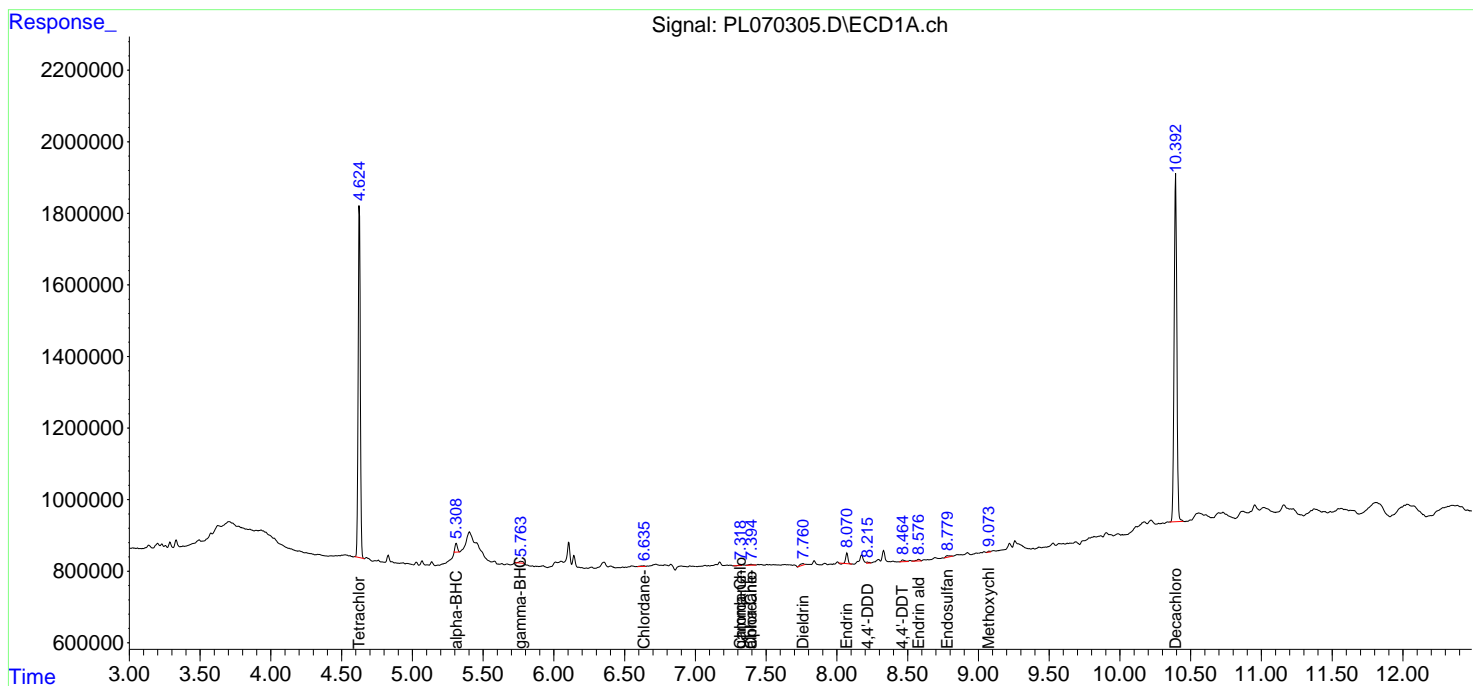
(f)=RT Delta > 1/2 Window (#)=Amounts differ by > 25% (m)=manual int.

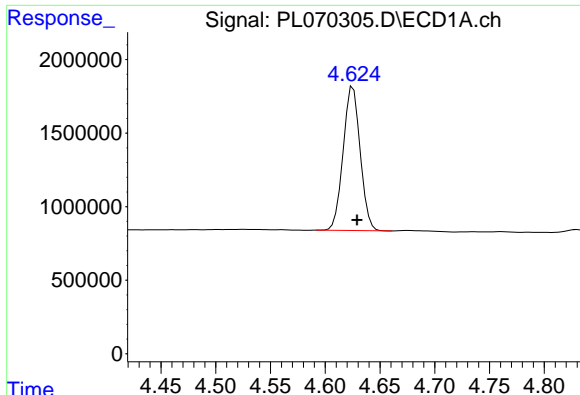
Data Path : Z:\pestpcbsrv\HPCHEM1\ECD_L\Data\PL101421\
 Data File : PL070305.D
 Signal(s) : Signal #1: ECD1A.ch Signal #2: ECD2B.ch
 Acq On : 13 Oct 2021 17:49
 Operator : AR\AJ
 Sample : I.BLK
 Misc :
 ALS Vial : 2 Sample Multiplier: 1

Instrument :
 ECD_L
 ClientSampled :

Integration File signal 1: autoint1.e
 Integration File signal 2: autoint2.e
 Quant Time: Oct 14 05:35:07 2021
 Quant Method : Z:\pestpcbsrv\HPCHEM1\ECD_L\methods\PL092821.M
 Quant Title : GC Extractables
 QLast Update : Wed Sep 29 09:19:28 2021
 Response via : Initial Calibration
 Integrator: ChemStation

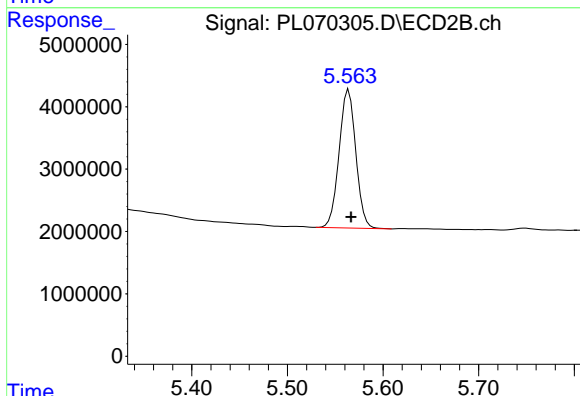
Volume Inj. : 1 µl
 Signal #1 Phase : ZB-MR2 Signal #2 Phase: ZB-MR1
 Signal #1 Info : 30M x 0.32mm x0.2 Signal #2 Info : 30M x 0.32mm x0.5µm



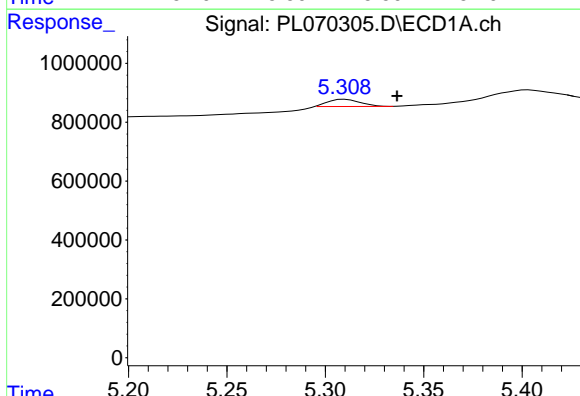


#1 Tetrachloro-m-xylene
 R.T.: 4.625 min
 Delta R.T.: -0.004 min
 Response: 10591610
 Conc: 21.17 ng/ml

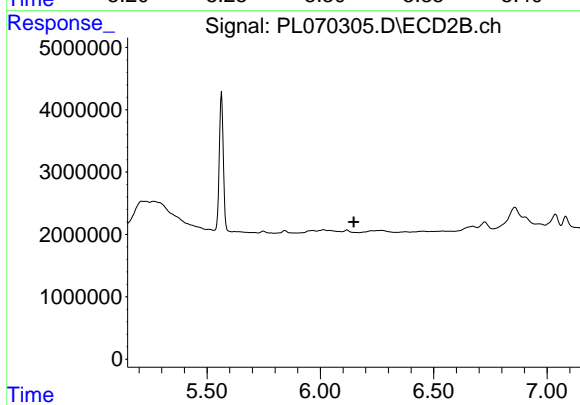
Instrument :
 ECD_L
 ClientSampleId :



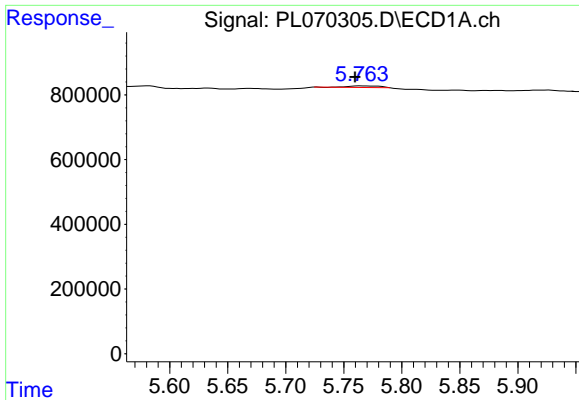
#1 Tetrachloro-m-xylene
 R.T.: 5.564 min
 Delta R.T.: -0.003 min
 Response: 26966598
 Conc: 20.39 ng/ml



#2 alpha-BHC
 R.T.: 5.310 min
 Delta R.T.: -0.026 min
 Response: 279227
 Conc: 0.38 ng/ml

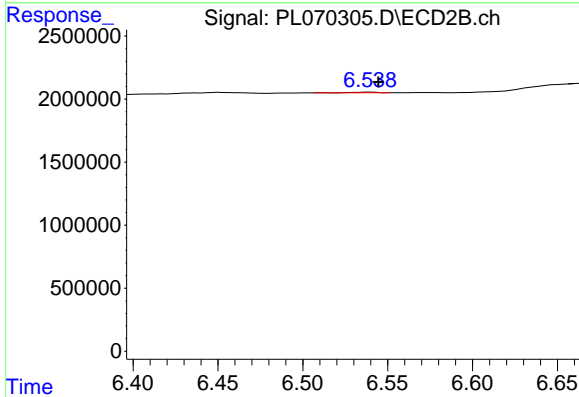


#2 alpha-BHC
 R.T.: 0.000 min
 Exp R.T. : 6.148 min
 Response: 0
 Conc: N.D.

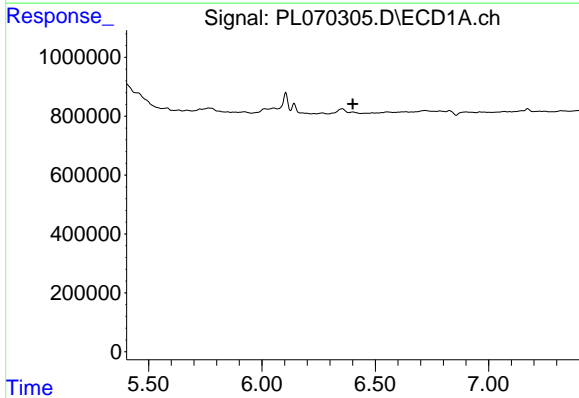


#3 gamma-BHC (Lindane)
 R.T.: 5.765 min
 Delta R.T.: 0.005 min
 Response: 91888
 Conc: 0.13 ng/ml

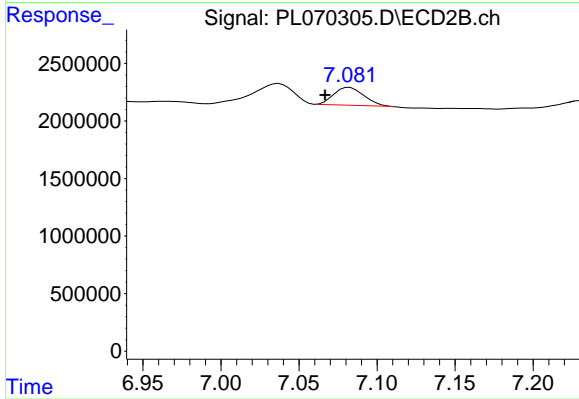
Instrument :
 ECD_L
 ClientSampleId :



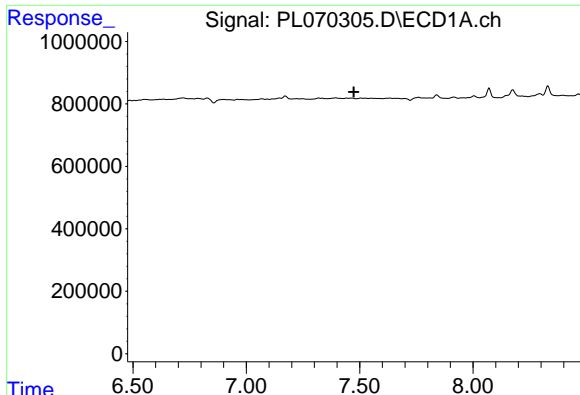
#3 gamma-BHC (Lindane)
 R.T.: 6.539 min
 Delta R.T.: -0.005 min
 Response: 42377
 Conc: 0.02 ng/ml



#7 delta-BHC
 R.T.: 0.000 min
 Exp R.T. : 6.401 min
 Response: 0
 Conc: N.D.



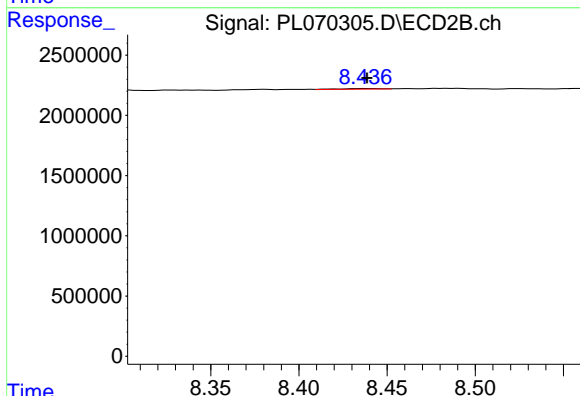
#7 delta-BHC
 R.T.: 7.082 min
 Delta R.T.: 0.016 min
 Response: 2063056
 Conc: 1.07 ng/ml



#9 Endosulfan I

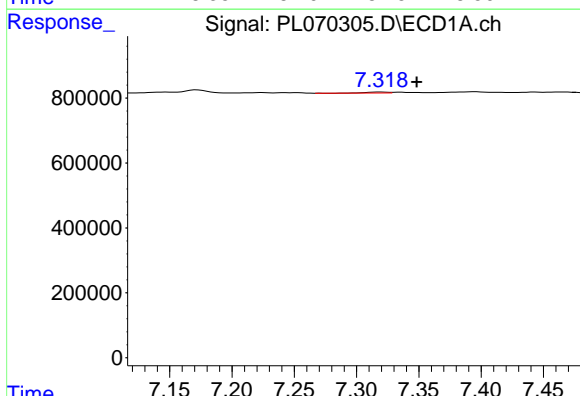
R.T.: 0.000 min
 Exp R.T.: 7.474 min
 Response: 0
 Conc: N.D.

Instrument :
 ECD_L
 ClientSampleId :



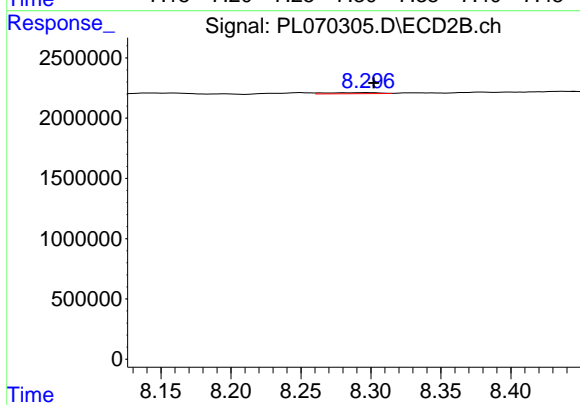
#9 Endosulfan I

R.T.: 8.438 min
 Delta R.T.: 0.000 min
 Response: 98615
 Conc: 0.07 ng/ml



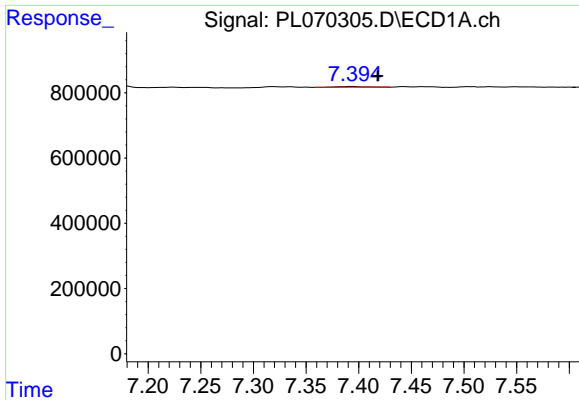
#10 gamma-Chlordane

R.T.: 7.319 min
 Delta R.T.: -0.029 min
 Response: 33177
 Conc: 0.05 ng/ml



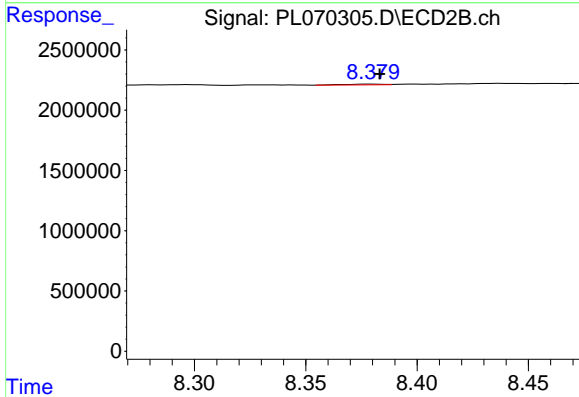
#10 gamma-Chlordane

R.T.: 8.298 min
 Delta R.T.: -0.004 min
 Response: 225338
 Conc: 0.14 ng/ml

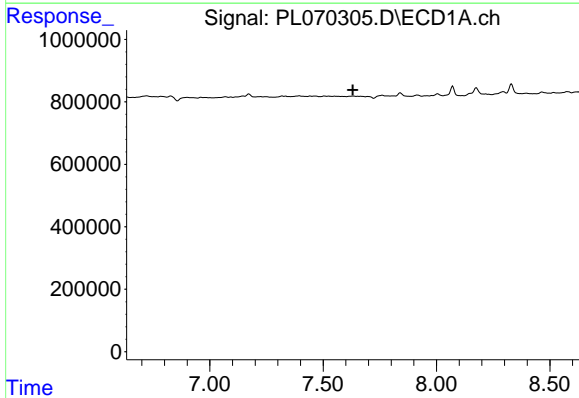


#11 alpha-Chlordane
 R.T.: 7.395 min
 Delta R.T.: -0.023 min
 Response: 53510
 Conc: 0.07 ng/ml

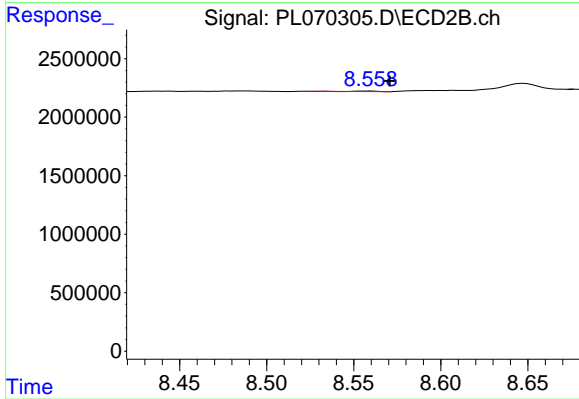
Instrument :
 ECD_L
 ClientSampleId :



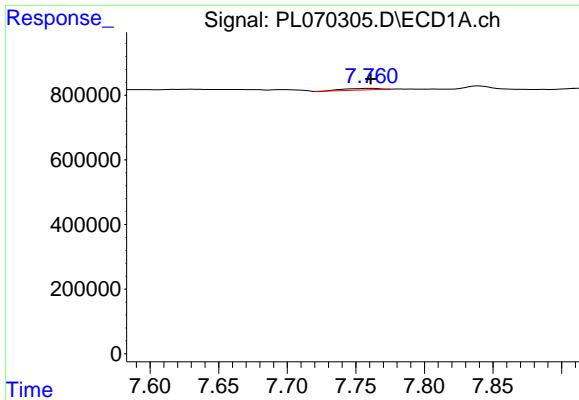
#11 alpha-Chlordane
 R.T.: 8.380 min
 Delta R.T.: -0.003 min
 Response: 68072
 Conc: 0.04 ng/ml



#12 4,4'-DDE
 R.T.: 0.000 min
 Exp R.T. : 7.632 min
 Response: 0
 Conc: N.D.



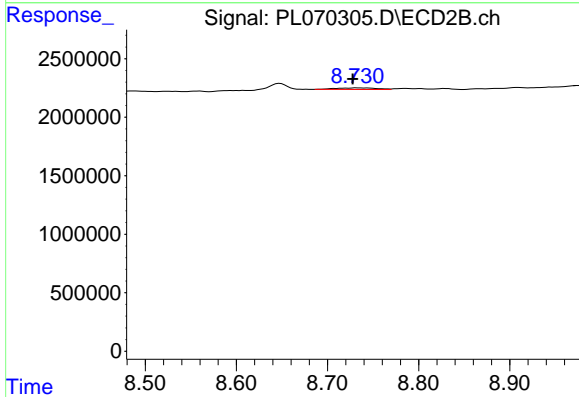
#12 4,4'-DDE
 R.T.: 8.559 min
 Delta R.T.: -0.011 min
 Response: 29504
 Conc: 0.02 ng/ml



#13 Dieldrin

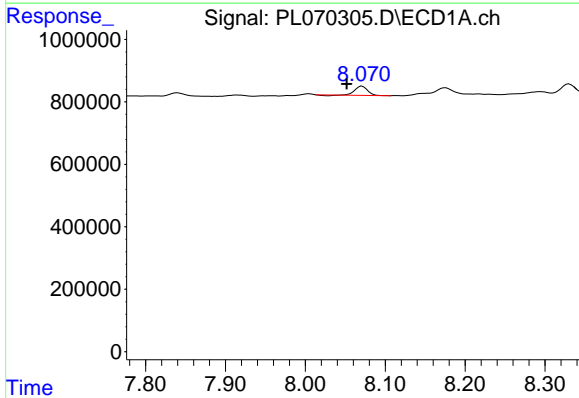
R.T.: 7.761 min
 Delta R.T.: 0.000 min
 Response: 81750
 Conc: 0.12 ng/ml

Instrument :
 ECD_L
 ClientSampleId :



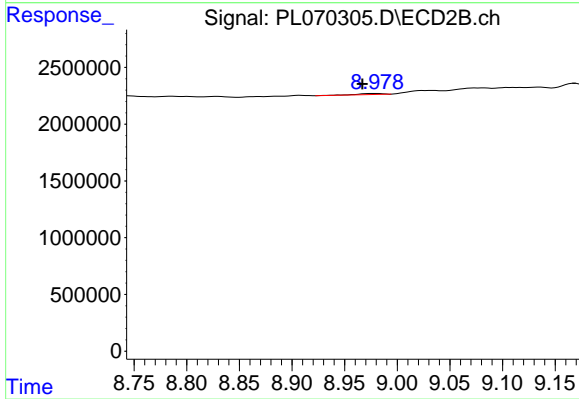
#13 Dieldrin

R.T.: 8.731 min
 Delta R.T.: 0.003 min
 Response: 409370
 Conc: 0.27 ng/ml



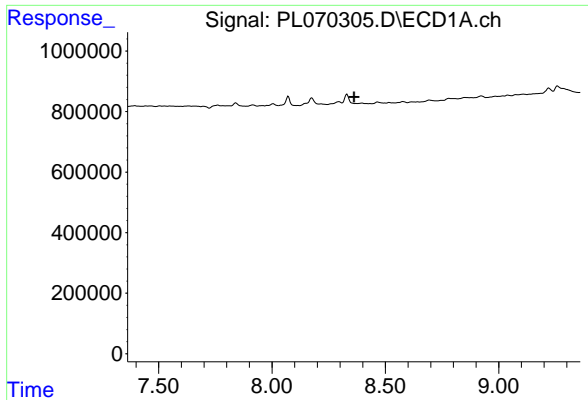
#14 Endrin

R.T.: 8.071 min
 Delta R.T.: 0.020 min
 Response: 308489
 Conc: 0.49 ng/ml



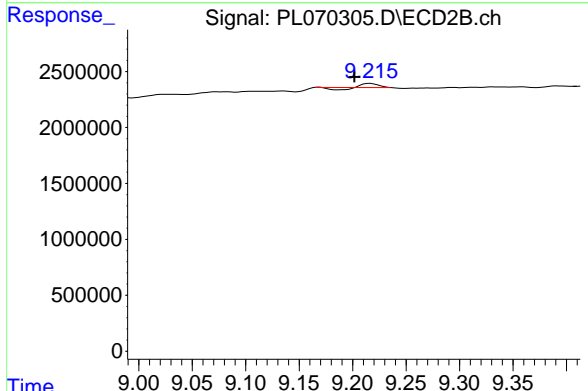
#14 Endrin

R.T.: 8.980 min
 Delta R.T.: 0.013 min
 Response: 171395
 Conc: 0.14 ng/ml

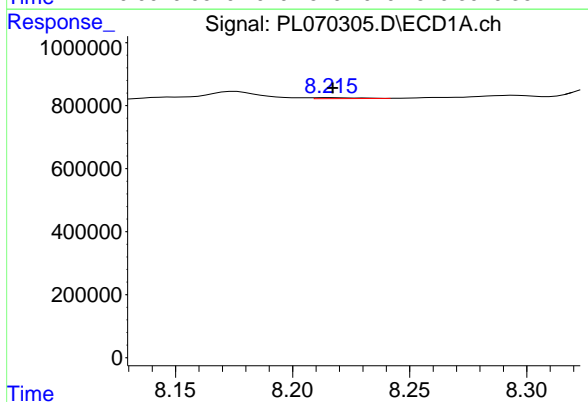


#15 Endosulfan II
 R.T.: 0.000 min
 Exp R.T.: 8.362 min
 Response: 0
 Conc: N.D.

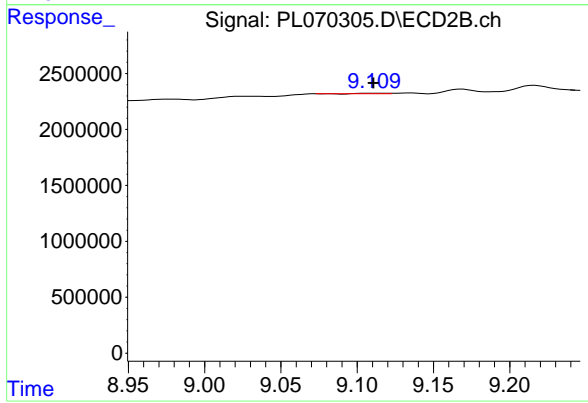
Instrument :
 ECD_L
 ClientSampleId :



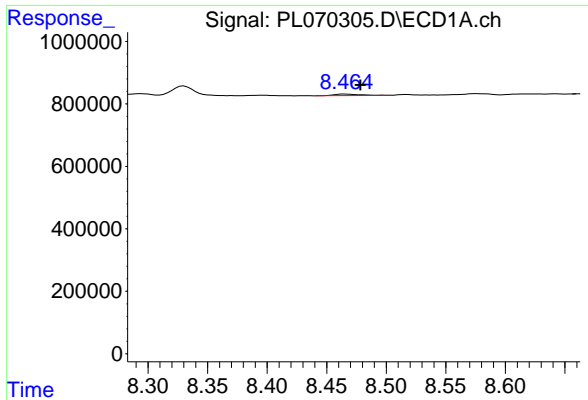
#15 Endosulfan II
 R.T.: 9.216 min
 Delta R.T.: 0.015 min
 Response: 148192
 Conc: 0.12 ng/ml



#16 4,4'-DDD
 R.T.: 8.217 min
 Delta R.T.: 0.000 min
 Response: 36857
 Conc: 0.07 ng/ml



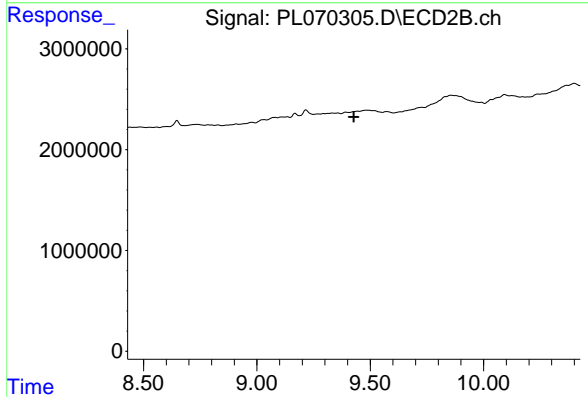
#16 4,4'-DDD
 R.T.: 9.111 min
 Delta R.T.: 0.000 min
 Response: 48303
 Conc: 0.04 ng/ml



#17 4,4'-DDT

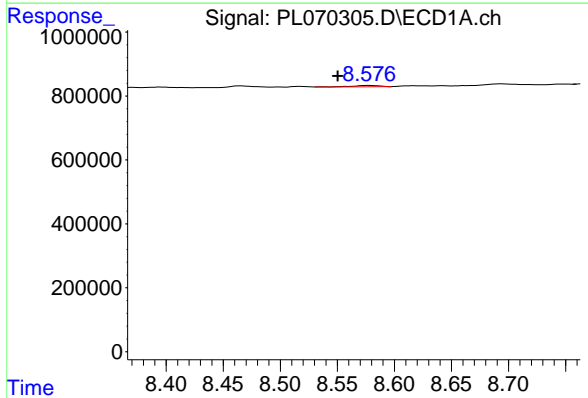
R.T.: 8.466 min
 Delta R.T.: -0.013 min
 Response: 80368
 Conc: 0.13 ng/ml

Instrument :
 ECD_L
 ClientSampled :



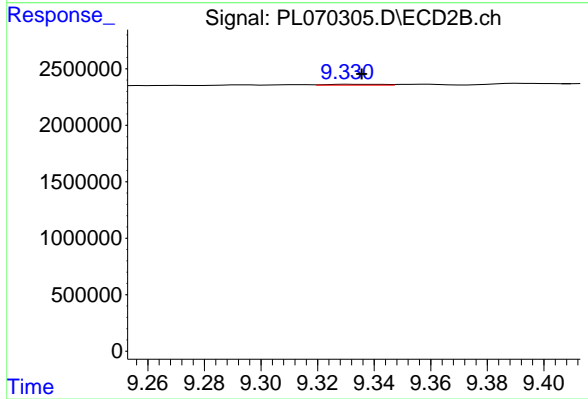
#17 4,4'-DDT

R.T.: 0.000 min
 Exp R.T. : 9.428 min
 Response: 0
 Conc: N.D.



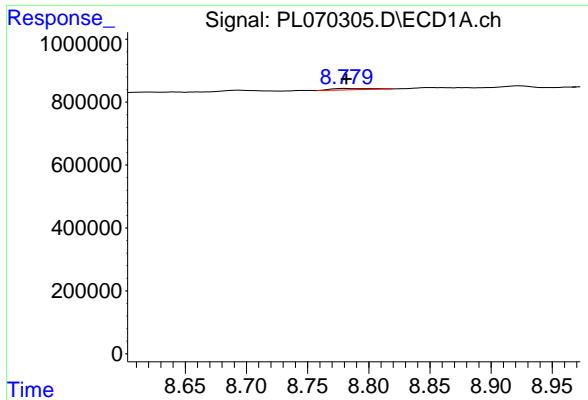
#18 Endrin aldehyde

R.T.: 8.577 min
 Delta R.T.: 0.026 min
 Response: 76723
 Conc: 0.15 ng/ml



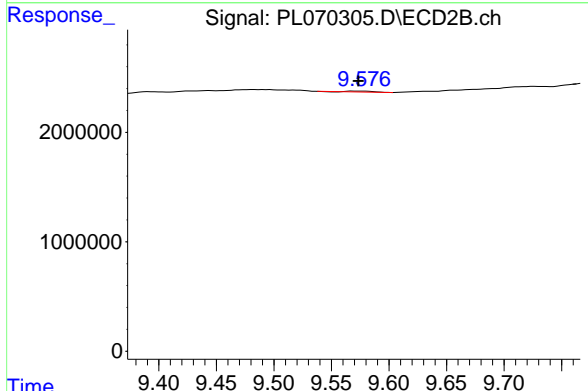
#18 Endrin aldehyde

R.T.: 9.332 min
 Delta R.T.: -0.004 min
 Response: 103413
 Conc: 0.11 ng/ml

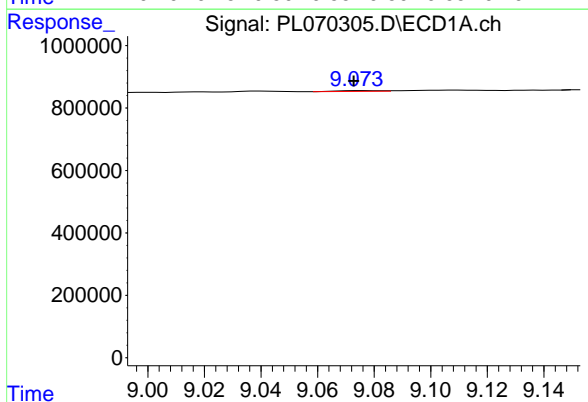


#19 Endosulfan Sulfate
 R.T.: 8.781 min
 Delta R.T.: -0.001 min
 Response: 89745
 Conc: 0.14 ng/ml

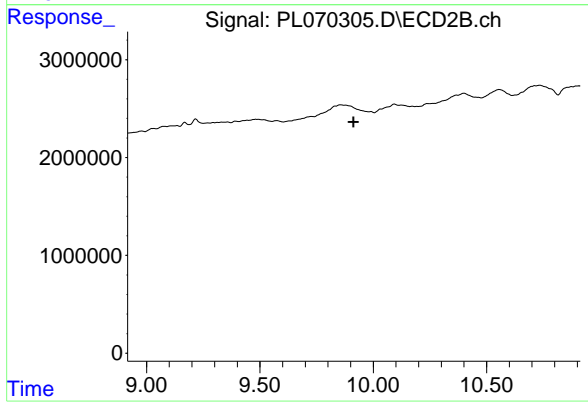
Instrument :
 ECD_L
 ClientSampled :



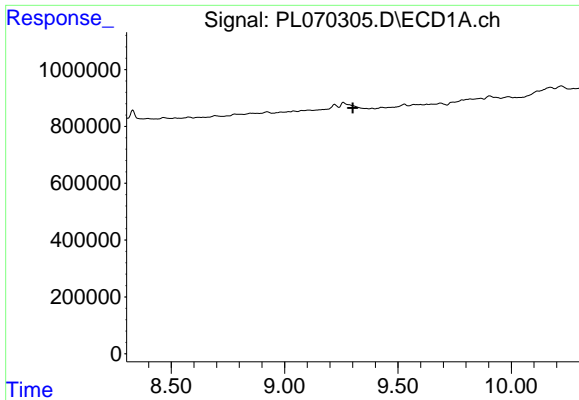
#19 Endosulfan Sulfate
 R.T.: 9.574 min
 Delta R.T.: 0.000 min
 Response: 102355
 Conc: 0.08 ng/ml



#20 Methoxychlor
 R.T.: 9.075 min
 Delta R.T.: 0.003 min
 Response: 26454
 Conc: 0.07 ng/ml



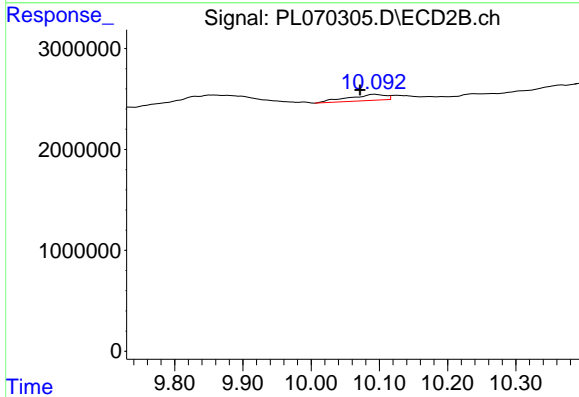
#20 Methoxychlor
 R.T.: 0.000 min
 Exp R.T. : 9.913 min
 Response: 0
 Conc: N.D.



#21 Endrin ketone

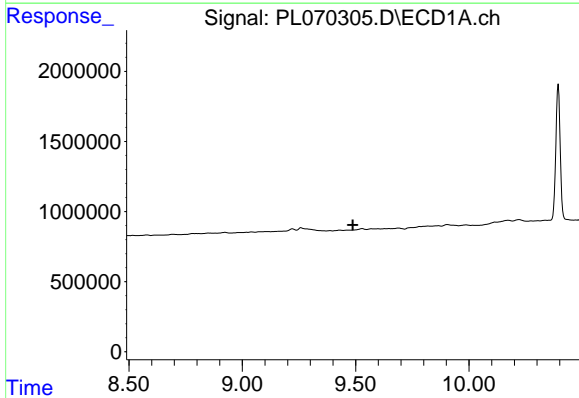
R.T.: 0.000 min
 Exp R.T. : 9.301 min
 Response: 0
 Conc: N.D.

Instrument :
 ECD_L
 ClientSampled :



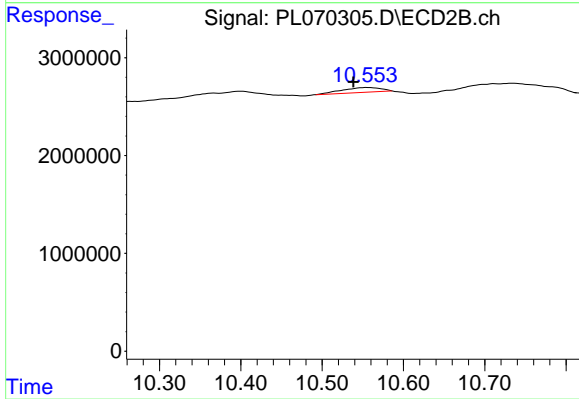
#21 Endrin ketone

R.T.: 10.093 min
 Delta R.T.: 0.021 min
 Response: 2390795
 Conc: 1.79 ng/ml



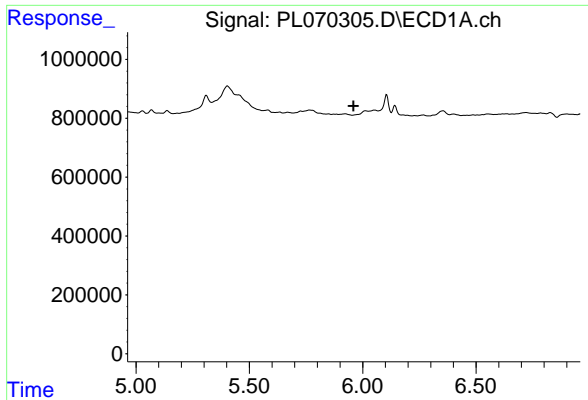
#22 Mirex

R.T.: 0.000 min
 Exp R.T. : 9.488 min
 Response: 0
 Conc: N.D.



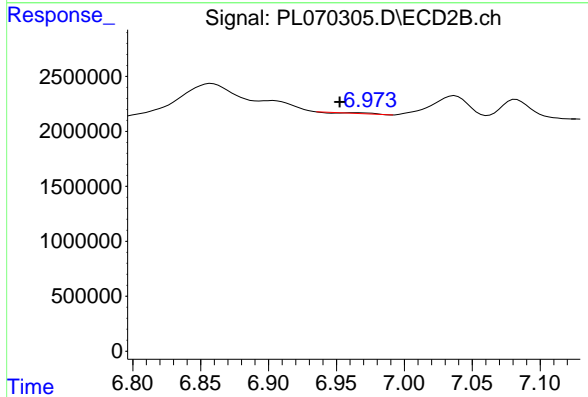
#22 Mirex

R.T.: 10.556 min
 Delta R.T.: 0.017 min
 Response: 1662802
 Conc: 1.69 ng/ml

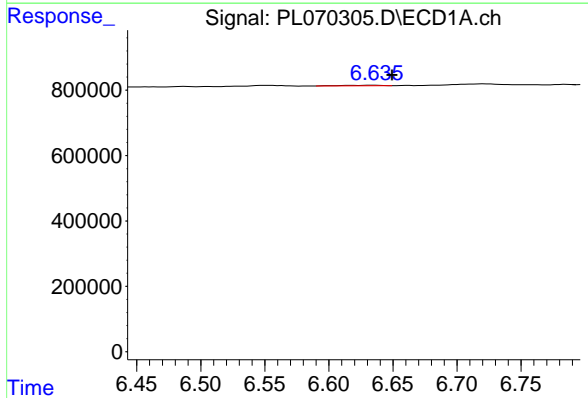


#23 Chlordane-1
 R.T.: 0.000 min
 Exp R.T.: 5.960 min
 Response: 0
 Conc: N.D.

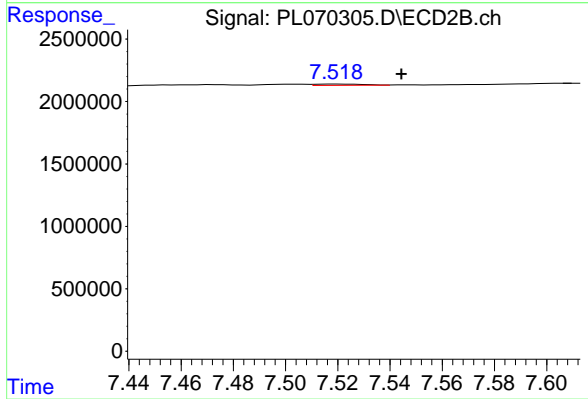
Instrument :
 ECD_L
 ClientSampleId :



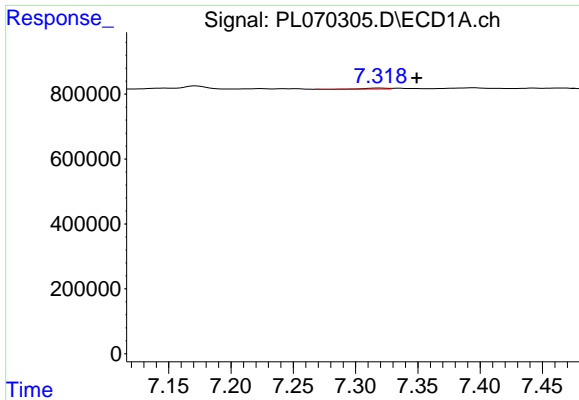
#23 Chlordane-1
 R.T.: 6.965 min
 Delta R.T.: 0.012 min
 Response: 86155
 Conc: 1.88 ng/ml



#24 Chlordane-2
 R.T.: 6.636 min
 Delta R.T.: -0.013 min
 Response: 40533
 Conc: 1.60 ng/ml



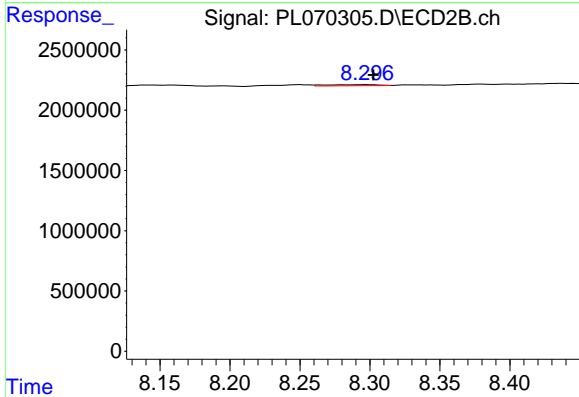
#24 Chlordane-2
 R.T.: 7.519 min
 Delta R.T.: -0.025 min
 Response: 122588
 Conc: 2.27 ng/ml



#25 Chlordane-3

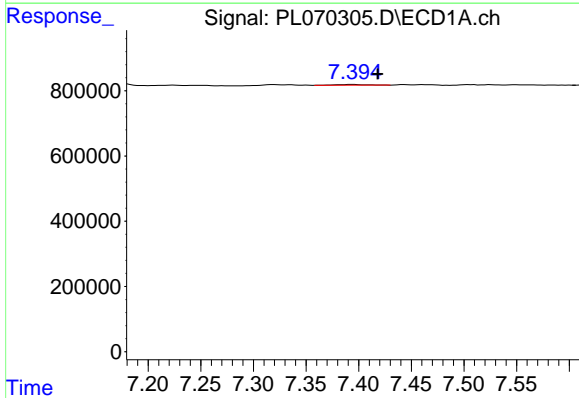
R.T.: 7.319 min
 Delta R.T.: -0.030 min
 Response: 33177
 Conc: 0.48 ng/ml

Instrument :
 ECD_L
 ClientSampleId :



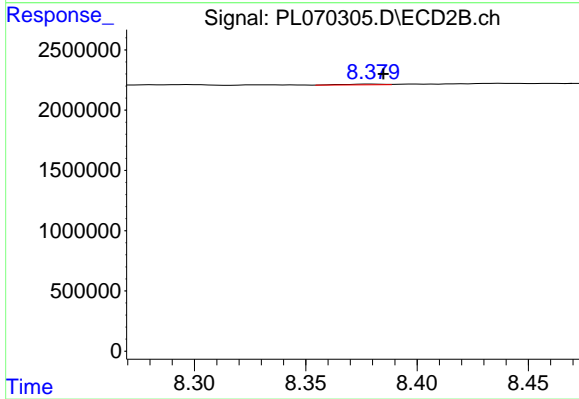
#25 Chlordane-3

R.T.: 8.298 min
 Delta R.T.: -0.005 min
 Response: 225338
 Conc: 1.06 ng/ml



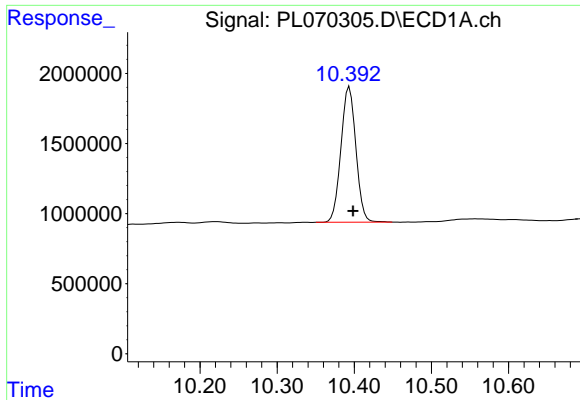
#26 Chlordane-4

R.T.: 7.395 min
 Delta R.T.: -0.023 min
 Response: 53510
 Conc: 0.73 ng/ml



#26 Chlordane-4

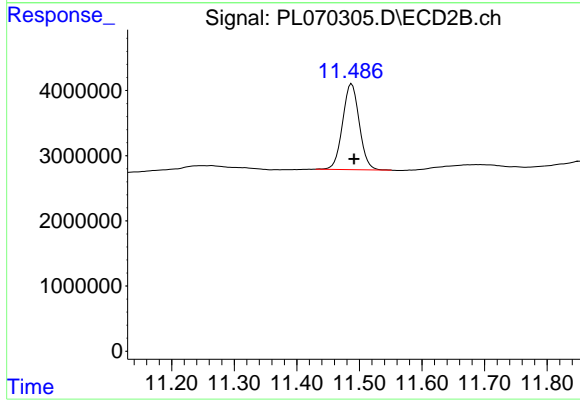
R.T.: 8.380 min
 Delta R.T.: -0.005 min
 Response: 68072
 Conc: 0.27 ng/ml



#28 Decachlorobiphenyl

R.T.: 10.394 min
Delta R.T.: -0.004 min
Response: 12977270
Conc: 18.75 ng/ml

Instrument :
ECD_L
ClientSampleId :



#28 Decachlorobiphenyl

R.T.: 11.488 min
Delta R.T.: -0.004 min
Response: 24482313
Conc: 20.23 ng/ml