

Data Path : Z:\pestpcbsrv\HPCHEM1\ECD_L\Data\PL101520\
 Data File : PL062298.D
 Signal(s) : Signal #1: ECD1A.ch Signal #2: ECD2B.ch
 Acq On : 14 Oct 2020 15:48
 Operator : DD\AJ
 Sample : I.BLK
 Misc :
 ALS Vial : 2 Sample Multiplier: 1

Instrument :
 ECD_L
 ClientSampleId :

Integration File signal 1: autoint1.e
 Integration File signal 2: autoint2.e
 Quant Time: Oct 14 16:59:46 2020
 Quant Method : Z:\pestpcbsrv\HPCHEM1\ECD_L\methods\PL101320.M
 Quant Title : GC Extractables
 QLast Update : Tue Oct 13 05:04:40 2020
 Response via : Initial Calibration
 Integrator: ChemStation

Volume Inj. : 1 µl
 Signal #1 Phase : ZB-MR2 Signal #2 Phase: ZB-MR1
 Signal #1 Info : 30M x 0.32mm x0.2 Signal #2 Info : 30M x 0.32mm x0.5µm

Compound	RT#1	RT#2	Resp#1	Resp#2	ng/ml	ng/ml

System Monitoring Compounds						
1) SA Tetrachlo...	3.412	3.951	40581529	64196796	23.315	22.778
28) SA Decachlor...	8.125	8.994	36714857	52368816	20.071	19.080
Target Compounds						
8) B Heptachlo...	0.000	5.811	0	25160582	N.D.	7.740 #

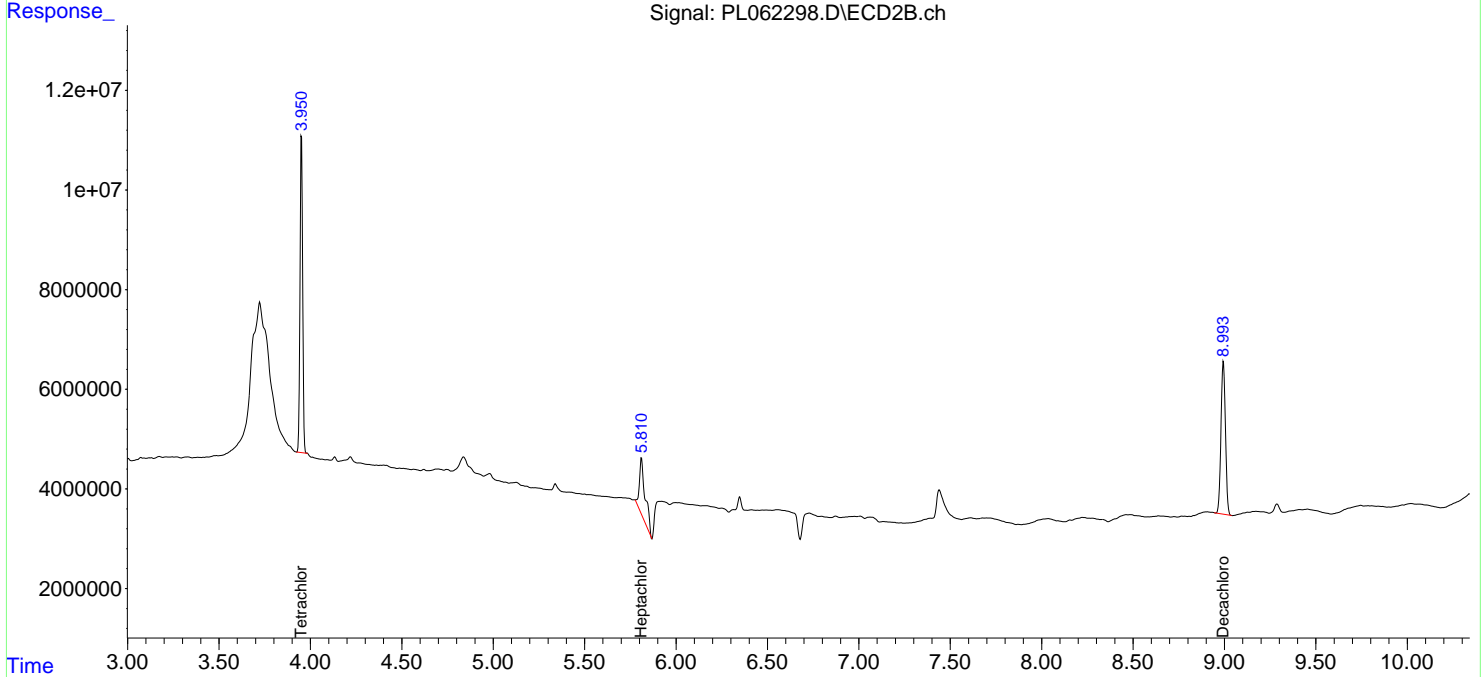
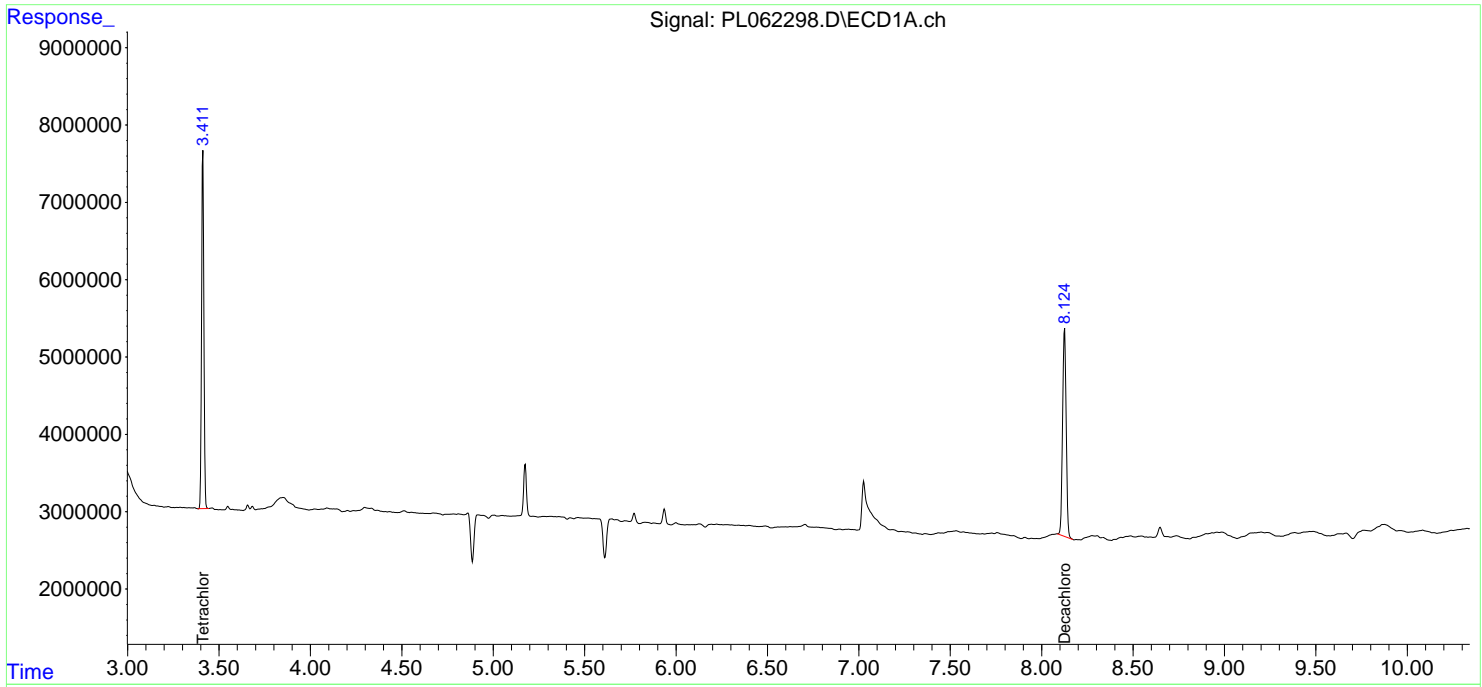
(f)=RT Delta > 1/2 Window (#)=Amounts differ by > 25% (m)=manual int.

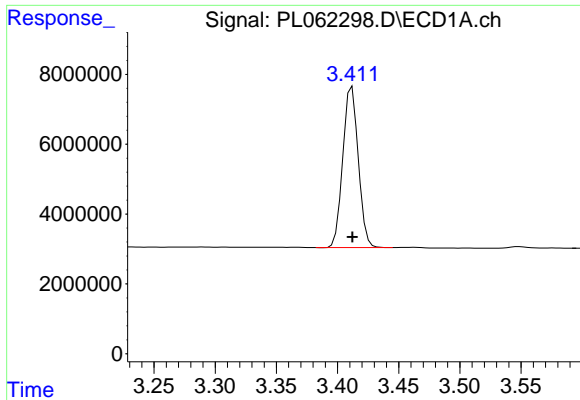
Data Path : Z:\pestpcbsrv\HPCHEM1\ECD_L\Data\PL101520\
Data File : PL062298.D
Signal(s) : Signal #1: ECD1A.ch Signal #2: ECD2B.ch
Acq On : 14 Oct 2020 15:48
Operator : DD\AJ
Sample : I.BLK
Misc :
ALS Vial : 2 Sample Multiplier: 1

Instrument :
ECD_L
ClientSampled :

Integration File signal 1: autoint1.e
Integration File signal 2: autoint2.e
Quant Time: Oct 14 16:59:46 2020
Quant Method : Z:\pestpcbsrv\HPCHEM1\ECD_L\methods\PL101320.M
Quant Title : GC Extractables
QLast Update : Tue Oct 13 05:04:40 2020
Response via : Initial Calibration
Integrator: ChemStation

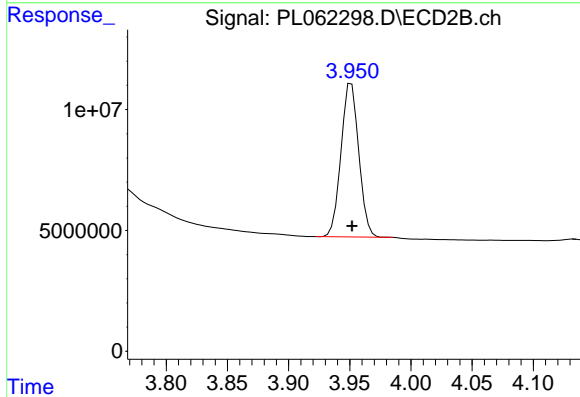
Volume Inj. : 1 µl
Signal #1 Phase : ZB-MR2 Signal #2 Phase: ZB-MR1
Signal #1 Info : 30M x 0.32mm x0.2 Signal #2 Info : 30M x 0.32mm x0.5µm



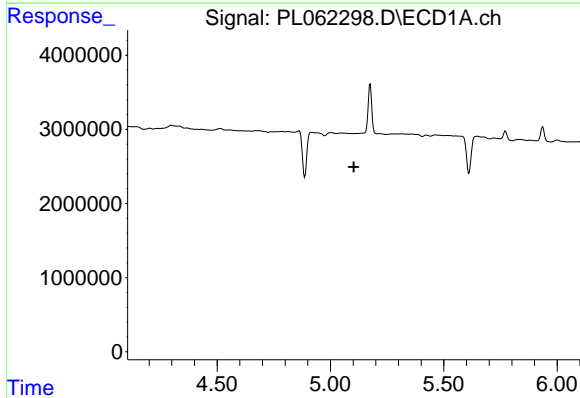


#1 Tetrachloro-m-xylene
 R.T.: 3.412 min
 Delta R.T.: 0.000 min
 Response: 40581529
 Conc: 23.31 ng/ml

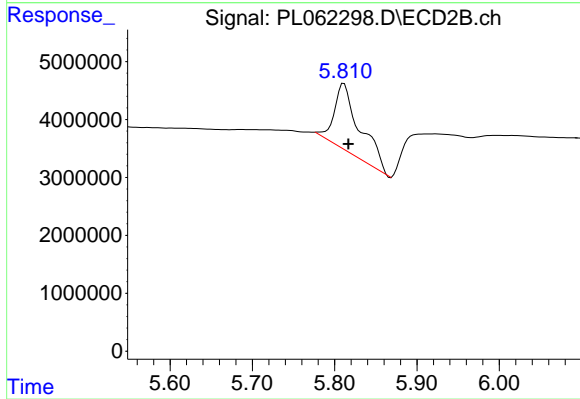
Instrument :
 ECD_L
 ClientSampled :



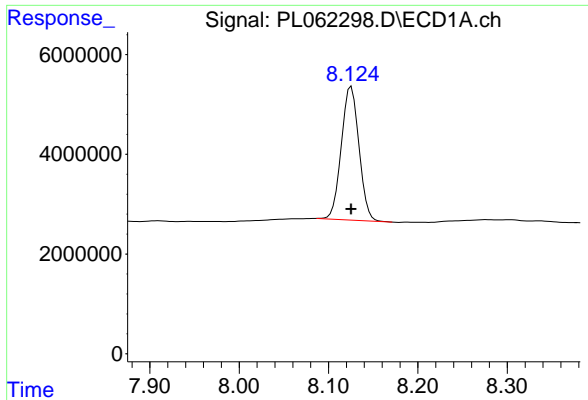
#1 Tetrachloro-m-xylene
 R.T.: 3.951 min
 Delta R.T.: 0.000 min
 Response: 64196796
 Conc: 22.78 ng/ml



#8 Heptachlor epoxide
 R.T.: 0.000 min
 Exp R.T. : 5.103 min
 Response: 0
 Conc: N.D.



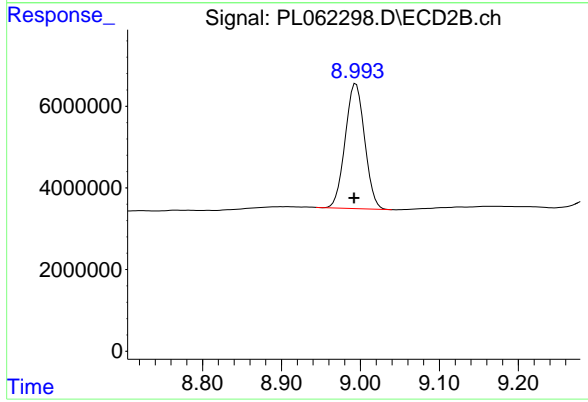
#8 Heptachlor epoxide
 R.T.: 5.811 min
 Delta R.T.: -0.005 min
 Response: 25160582
 Conc: 7.74 ng/ml



#28 Decachlorobiphenyl

R.T.: 8.125 min
Delta R.T.: 0.000 min
Response: 36714857
Conc: 20.07 ng/ml

Instrument :
ECD_L
ClientSampleId :



#28 Decachlorobiphenyl

R.T.: 8.994 min
Delta R.T.: 0.002 min
Response: 52368816
Conc: 19.08 ng/ml