

Data Path : Z:\pestpcbsrv\HPCHEM1\ECD_L\Data\PL101521\
 Data File : PL070309.D
 Signal(s) : Signal #1: ECD1A.ch Signal #2: ECD2B.ch
 Acq On : 14 Oct 2021 10:37
 Operator : AR\AJ
 Sample : PEM
 Misc :
 ALS Vial : 3 Sample Multiplier: 1

Instrument :
 ECD_L
 ClientSampled :
 PEM

Manual Integrations
 APPROVED

mohammad
 10/15/2021 2:52:23 PM

Integration File signal 1: autoint1.e
 Integration File signal 2: autoint2.e
 Quant Time: Oct 14 13:24:12 2021
 Quant Method : Z:\pestpcbsrv\HPCHEM1\ECD_L\methods\PL092821.M
 Quant Title : GC Extractables
 QLast Update : Wed Sep 29 09:19:28 2021
 Response via : Initial Calibration
 Integrator: ChemStation

Volume Inj. : 1 µl
 Signal #1 Phase : ZB-MR2 Signal #2 Phase: ZB-MR1
 Signal #1 Info : 30M x 0.32mm x0.2 Signal #2 Info : 30M x 0.32mm x0.5µm

	Compound	RT#1	RT#2	Resp#1	Resp#2	ng/ml	ng/ml

System Monitoring Compounds							
1)	SA Tetrachlo...	4.635	5.566	10722350	27892780	21.428	21.089
28)	SA Decachlor...	10.400	11.494	15123986	25073341	21.856	20.719
Target Compounds							
2)	A alpha-BHC	5.341	6.148	6478097	17809823	8.752	9.106
3)	MA gamma-BHC...	5.764	6.545	6505811	16378830	9.317	8.940
6)	B beta-BHC	6.144	6.798	4502900	8460708	13.412m	9.840m#
12)	B 4,4'-DDE	7.633	8.567	148937	271975	0.234m	0.176m
14)	MA Endrin	8.055	8.968	31503909	59893849	49.854	47.681
16)	A 4,4'-DDD	8.220	9.111	2700385	5326076	4.815	4.509
17)	MA 4,4'-DDT	8.481	9.429	59524727	116.9E6	97.308	89.454
18)	B Endrin al...	8.555	9.337	447794	929344	0.904	0.964m
20)	A Methoxychlor	9.075	9.915	82035965	146.4E6	219.699	226.192
21)	B Endrin ke...	9.302	10.074	1715173	3088018	2.245	2.309

(f)=RT Delta > 1/2 Window (#)=Amounts differ by > 25% (m)=manual int.

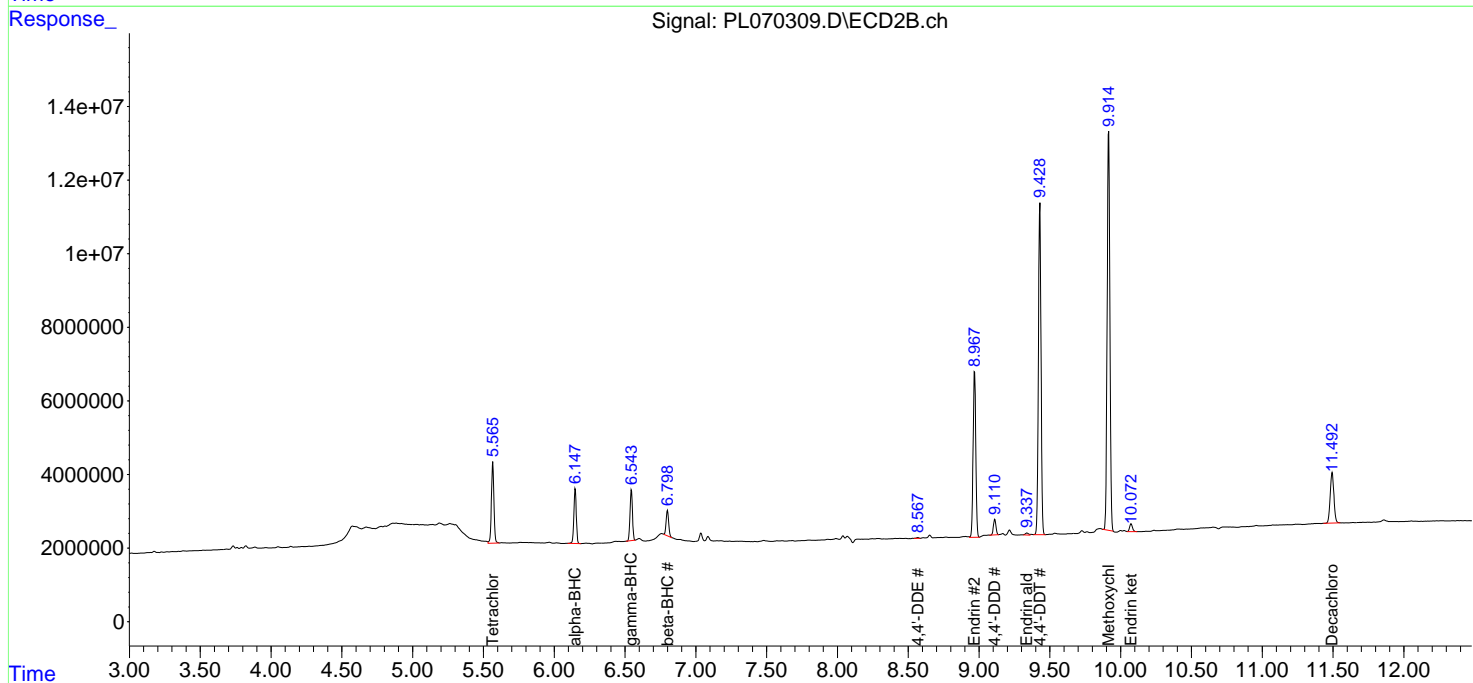
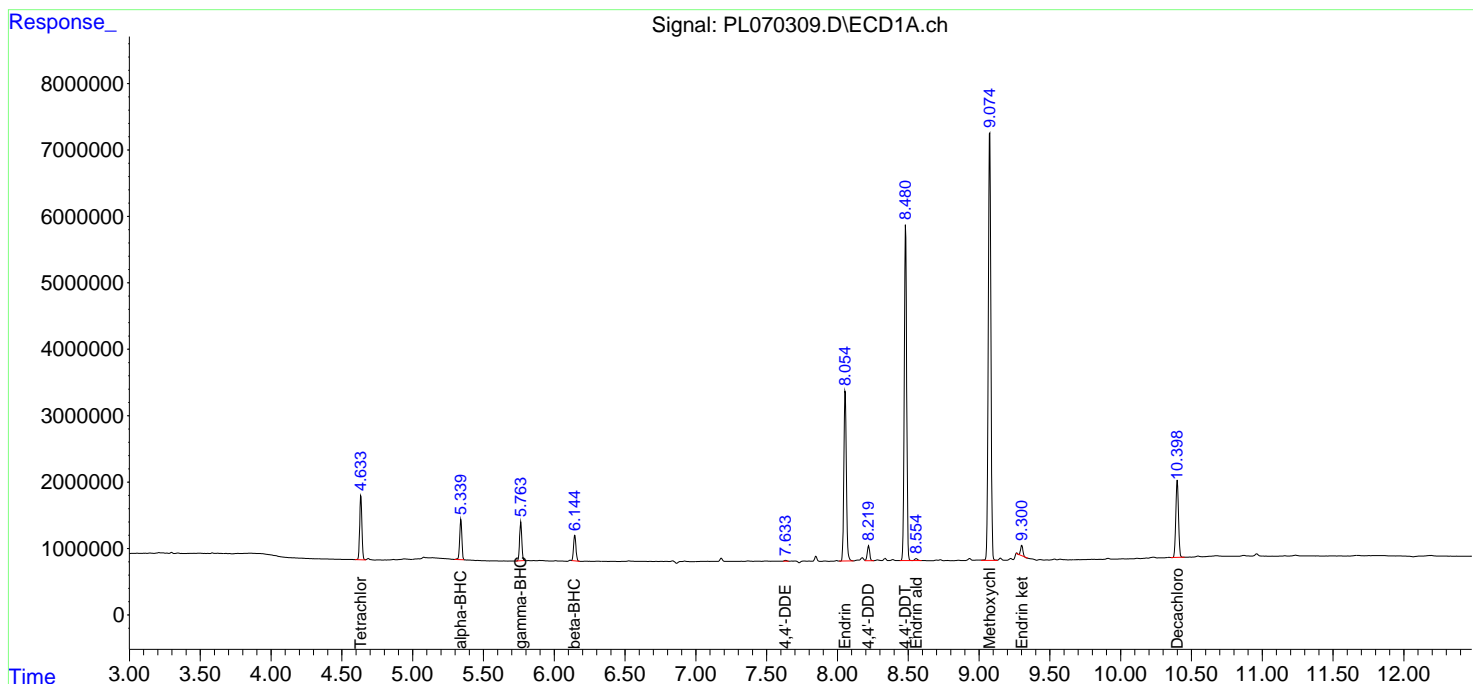
Data Path : Z:\pestpcbsrv\HPCHEM1\ECD_L\Data\PL101521\
 Data File : PL070309.D
 Signal(s) : Signal #1: ECD1A.ch Signal #2: ECD2B.ch
 Acq On : 14 Oct 2021 10:37
 Operator : AR\AJ
 Sample : PEM
 Misc :
 ALS Vial : 3 Sample Multiplier: 1

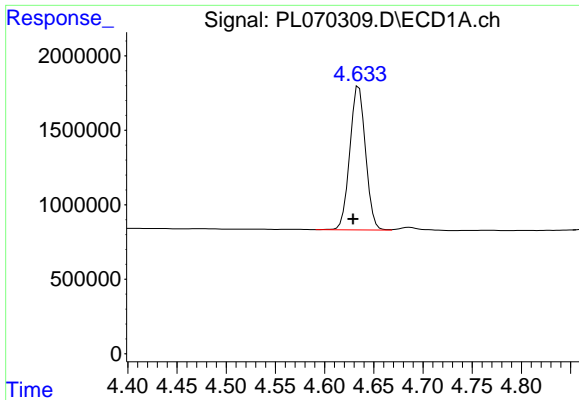
Instrument :
 ECD_L
 ClientSampled :
 PEM

Manual Integrations
APPROVED
 mohammad
 10/15/2021 2:52:23 PM

Integration File signal 1: autoint1.e
 Integration File signal 2: autoint2.e
 Quant Time: Oct 14 13:24:12 2021
 Quant Method : Z:\pestpcbsrv\HPCHEM1\ECD_L\methods\PL092821.M
 Quant Title : GC Extractables
 QLast Update : Wed Sep 29 09:19:28 2021
 Response via : Initial Calibration
 Integrator: ChemStation

Volume Inj. : 1 µl
 Signal #1 Phase : ZB-MR2 Signal #2 Phase: ZB-MR1
 Signal #1 Info : 30M x 0.32mm x0.2 Signal #2 Info : 30M x 0.32mm x0.5µm

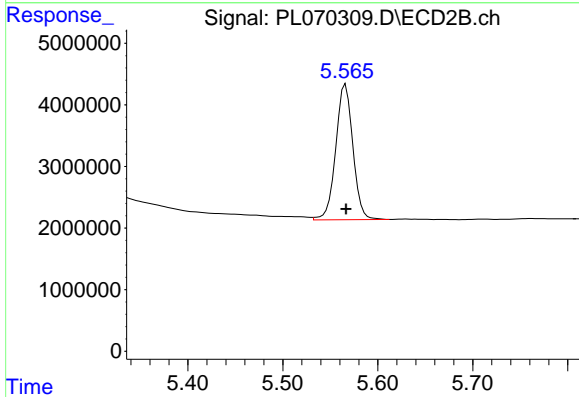




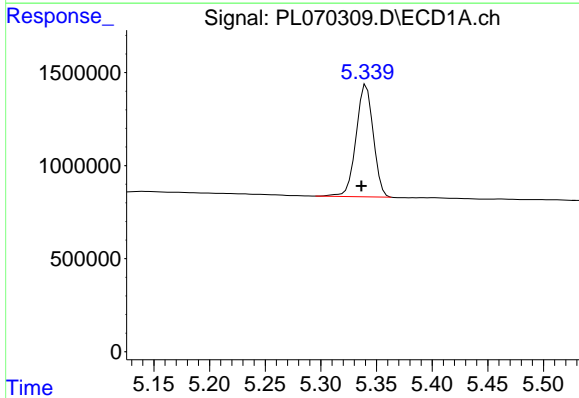
#1 Tetrachloro-m-xylene
 R.T.: 4.635 min
 Delta R.T.: 0.006 min
 Response: 10722350
 Conc: 21.43 ng/ml

Instrument :
 ECD_L
 ClientSampled :
 PEM

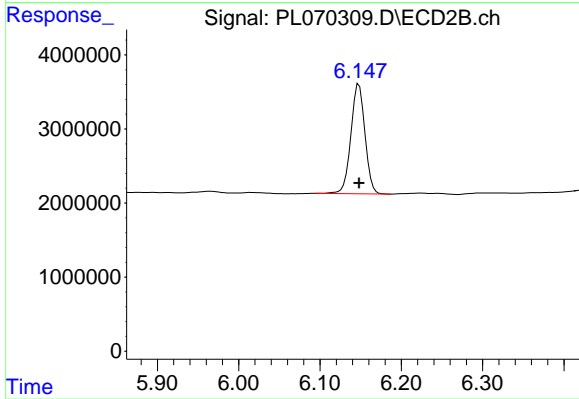
Manual Integrations
 APPROVED
 mohammad
 10/15/2021 2:52:23 PM



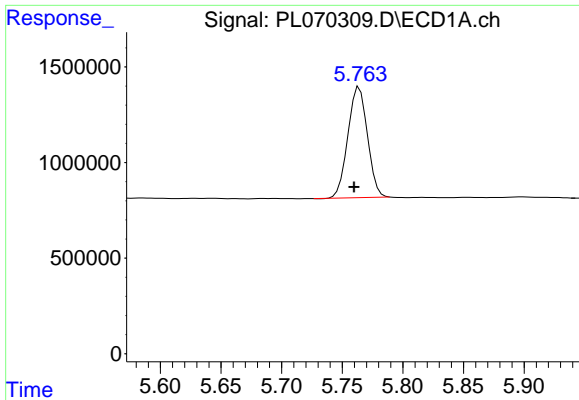
#1 Tetrachloro-m-xylene
 R.T.: 5.566 min
 Delta R.T.: 0.000 min
 Response: 27892780
 Conc: 21.09 ng/ml



#2 alpha-BHC
 R.T.: 5.341 min
 Delta R.T.: 0.004 min
 Response: 6478097
 Conc: 8.75 ng/ml



#2 alpha-BHC
 R.T.: 6.148 min
 Delta R.T.: 0.000 min
 Response: 17809823
 Conc: 9.11 ng/ml



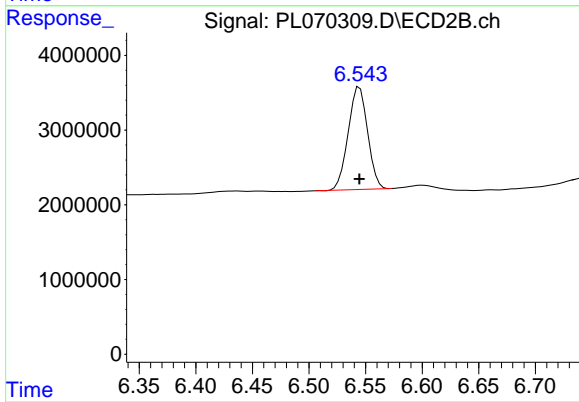
#3 gamma-BHC (Lindane)

R.T.: 5.764 min
 Delta R.T.: 0.004 min
 Response: 6505811
 Conc: 9.32 ng/ml

Instrument :
 ECD_L
 ClientSampled :
 PEM

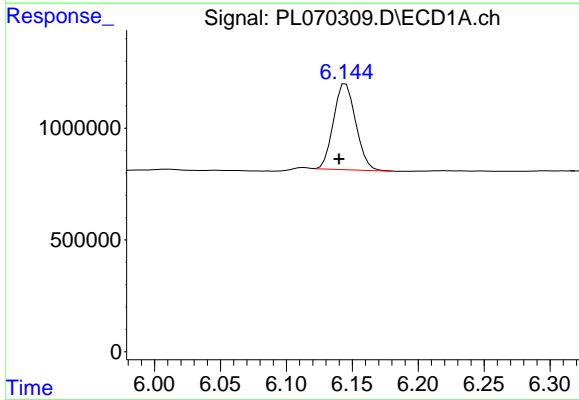
Manual Integrations
 APPROVED

mohammad
 10/15/2021 2:52:23 PM



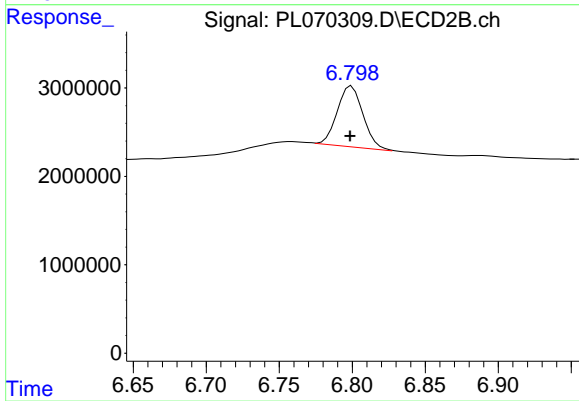
#3 gamma-BHC (Lindane)

R.T.: 6.545 min
 Delta R.T.: 0.000 min
 Response: 16378830
 Conc: 8.94 ng/ml



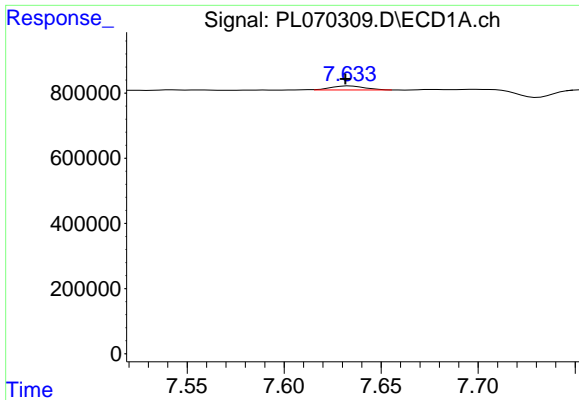
#6 beta-BHC

R.T.: 6.144 min
 Delta R.T.: 0.004 min
 Response: 4502900
 Conc: 13.41 ng/ml m



#6 beta-BHC

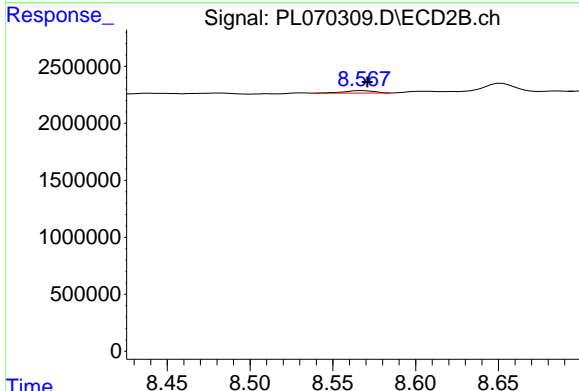
R.T.: 6.798 min
 Delta R.T.: 0.000 min
 Response: 8460708
 Conc: 9.84 ng/ml m



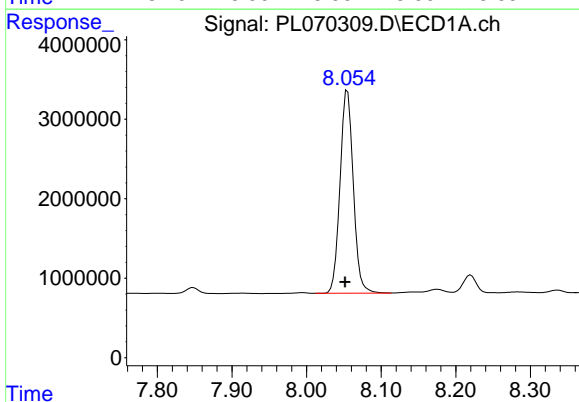
#12 4,4'-DDE
 R.T.: 7.633 min
 Delta R.T.: 0.000 min
 Response: 148937
 Conc: 0.23 ng/ml m

Instrument :
 ECD_L
ClientSampled :
 PEM

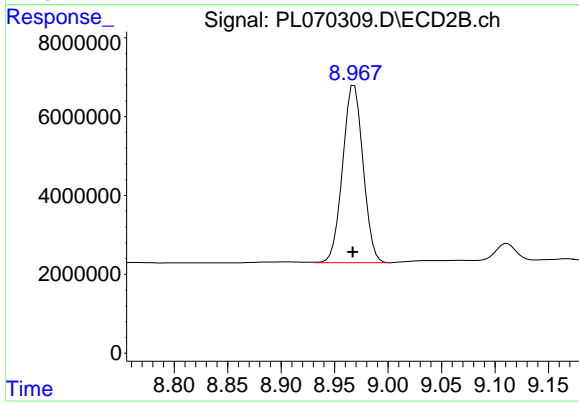
Manual Integrations
APPROVED
 mohammad
 10/15/2021 2:52:23 PM



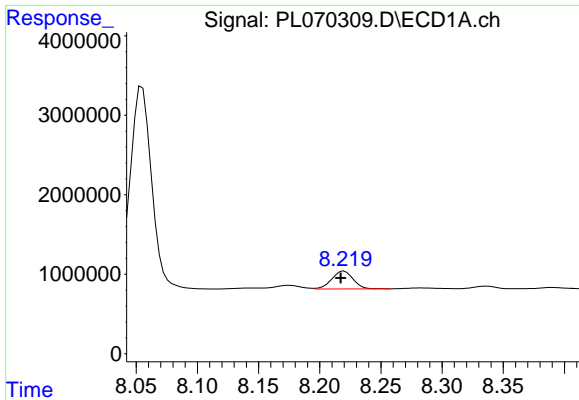
#12 4,4'-DDE
 R.T.: 8.567 min
 Delta R.T.: -0.004 min
 Response: 271975
 Conc: 0.18 ng/ml m



#14 Endrin
 R.T.: 8.055 min
 Delta R.T.: 0.003 min
 Response: 31503909
 Conc: 49.85 ng/ml



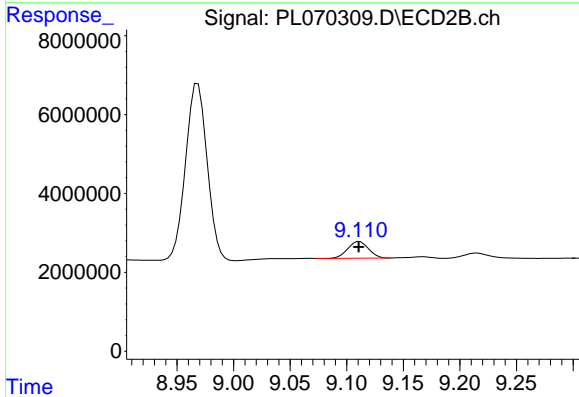
#14 Endrin
 R.T.: 8.968 min
 Delta R.T.: 0.001 min
 Response: 59893849
 Conc: 47.68 ng/ml



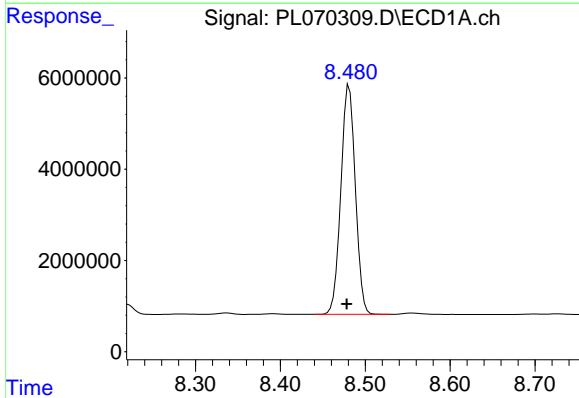
#16 4,4'-DDD
 R.T.: 8.220 min
 Delta R.T.: 0.003 min
 Response: 2700385
 Conc: 4.81 ng/ml

Instrument :
 ECD_L
 ClientSampled :
 PEM

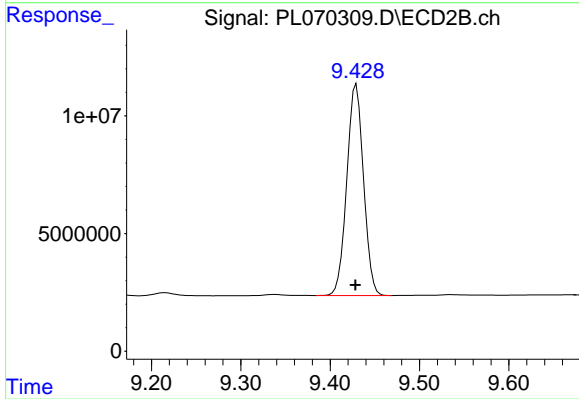
Manual Integrations
 APPROVED
 mohammad
 10/15/2021 2:52:23 PM



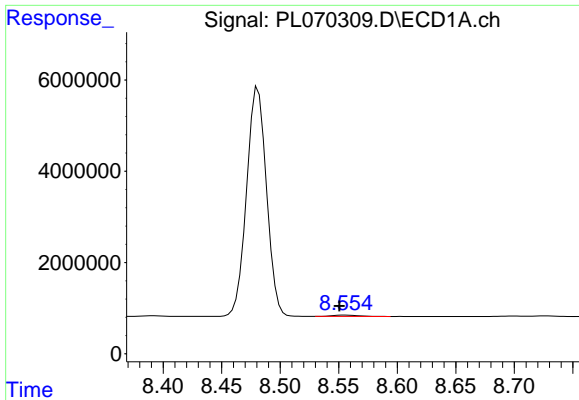
#16 4,4'-DDD
 R.T.: 9.111 min
 Delta R.T.: 0.000 min
 Response: 5326076
 Conc: 4.51 ng/ml



#17 4,4'-DDT
 R.T.: 8.481 min
 Delta R.T.: 0.003 min
 Response: 59524727
 Conc: 97.31 ng/ml



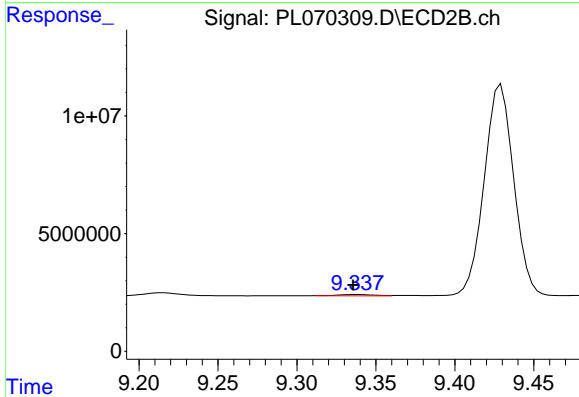
#17 4,4'-DDT
 R.T.: 9.429 min
 Delta R.T.: 0.001 min
 Response: 116901836
 Conc: 89.45 ng/ml



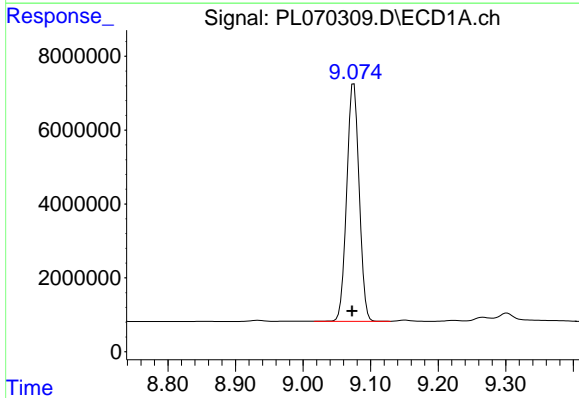
#18 Endrin aldehyde
 R.T.: 8.555 min
 Delta R.T.: 0.005 min
 Response: 447794
 Conc: 0.90 ng/ml

Instrument :
 ECD_L
 ClientSampled :
 PEM

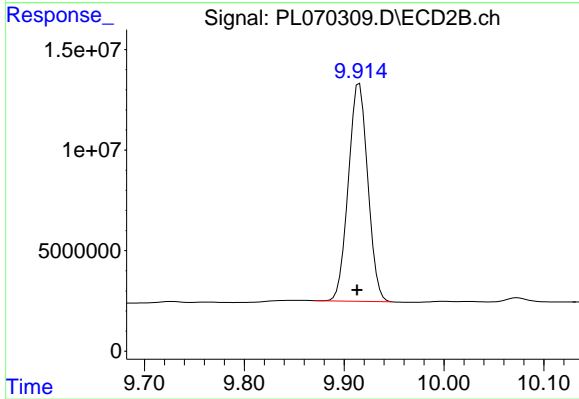
Manual Integrations
 APPROVED
 mohammad
 10/15/2021 2:52:23 PM



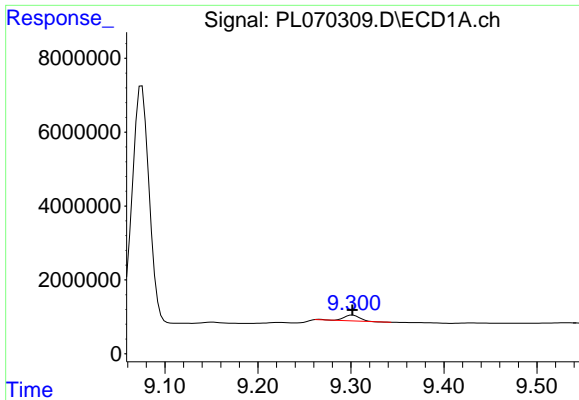
#18 Endrin aldehyde
 R.T.: 9.337 min
 Delta R.T.: 0.001 min
 Response: 929344
 Conc: 0.96 ng/ml m



#20 Methoxychlor
 R.T.: 9.075 min
 Delta R.T.: 0.002 min
 Response: 82035965
 Conc: 219.70 ng/ml



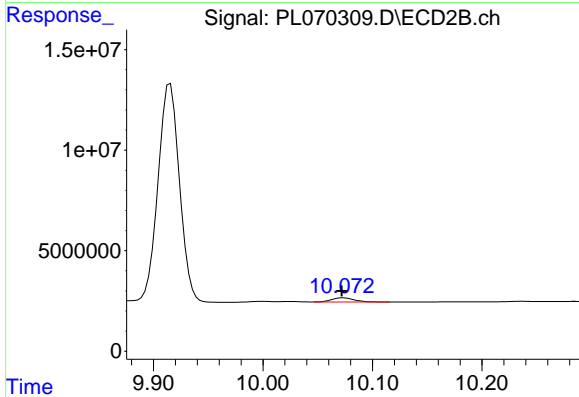
#20 Methoxychlor
 R.T.: 9.915 min
 Delta R.T.: 0.002 min
 Response: 146377606
 Conc: 226.19 ng/ml



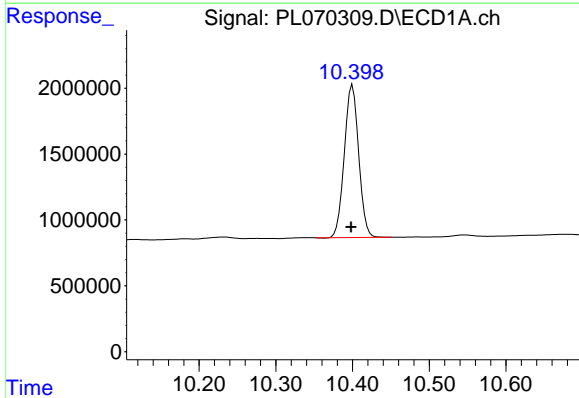
#21 Endrin ketone
 R.T.: 9.302 min
 Delta R.T.: 0.000 min
 Response: 1715173
 Conc: 2.24 ng/ml

Instrument :
 ECD_L
 ClientSampled :
 PEM

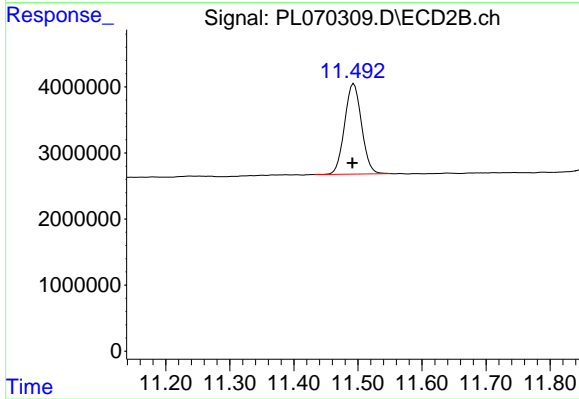
Manual Integrations
APPROVED
 mohammad
 10/15/2021 2:52:23 PM



#21 Endrin ketone
 R.T.: 10.074 min
 Delta R.T.: 0.002 min
 Response: 3088018
 Conc: 2.31 ng/ml



#28 Decachlorobiphenyl
 R.T.: 10.400 min
 Delta R.T.: 0.002 min
 Response: 15123986
 Conc: 21.86 ng/ml



#28 Decachlorobiphenyl
 R.T.: 11.494 min
 Delta R.T.: 0.002 min
 Response: 25073341
 Conc: 20.72 ng/ml