

Data Path : Z:\pestpcbsrv\HPCHEM1\ECD\_L\Data\PL101521\  
 Data File : PL070310.D  
 Signal(s) : Signal #1: ECD1A.ch Signal #2: ECD2B.ch  
 Acq On : 14 Oct 2021 10:59  
 Operator : AR\AJ  
 Sample : PSTDCCC050  
 Misc :  
 ALS Vial : 4 Sample Multiplier: 1

Instrument :  
 ECD\_L  
 ClientSampleId :  
 PSTDCCC050

Integration File signal 1: autoint1.e  
 Integration File signal 2: autoint2.e  
 Quant Time: Oct 14 13:24:25 2021  
 Quant Method : Z:\pestpcbsrv\HPCHEM1\ECD\_L\methods\PL092821.M  
 Quant Title : GC Extractables  
 QLast Update : Wed Sep 29 09:19:28 2021  
 Response via : Initial Calibration  
 Integrator: ChemStation

Volume Inj. : 1 µl  
 Signal #1 Phase : ZB-MR2 Signal #2 Phase: ZB-MR1  
 Signal #1 Info : 30M x 0.32mm x0.2 Signal #2 Info : 30M x 0.32mm x0.5µm

Compound	RT#1	RT#2	Resp#1	Resp#2	ng/ml	ng/ml
-----						
System Monitoring Compounds						
1) SA Tetrachlo...	4.632	5.566	25100662	65771699	50.162	49.728
28) SA Decachlor...	10.398	11.493	33377780	58272891	48.235	48.153
Target Compounds						
2) A alpha-BHC	5.339	6.148	36633044	96648133	49.490	49.413
3) MA gamma-BHC...	5.762	6.544	34979921	89592004	50.096	48.900
4) MA Heptachlor	6.171	7.194	37729719	89617812	49.529	48.054
5) MB Aldrin	6.496	7.565	35244141	82192044	48.827	47.702
6) B beta-BHC	6.142	6.799	17320753	42321100	51.591	49.219
7) B delta-BHC	6.403	7.067	35268760	90703131	51.016	46.861
8) B Heptachlo...	7.073	8.032	34387571	75500089	49.039	48.715
9) A Endosulfan I	7.476	8.438	33890316	70393540	50.712	47.846
10) B gamma-Chl...	7.350	8.302	36178599	76324150	49.955	47.718
11) B alpha-Chl...	7.420	8.383	36035275	74956050	49.477	47.526
12) B 4,4'-DDE	7.633	8.570	33884254	74137404	53.238	47.866
13) MA Dieldrin	7.762	8.728	33812757	73042977	49.213	47.849
14) MA Endrin	8.053	8.967	30049967	59808506	47.553	47.613
15) B Endosulfa...	8.363	9.202	30955137	58429590	48.796	48.897
16) A 4,4'-DDD	8.218	9.111	29077340	59547656	51.845	50.411
17) MA 4,4'-DDT	8.479	9.428	28521398	59099086	46.626	45.223
18) B Endrin al...	8.552	9.336	23903691	45853988	48.245	47.540
19) B Endosulfa...	8.782	9.574	31923257	58144065	48.387	47.513
20) A Methoxychlor	9.073	9.915	17330445	28683712	46.412	44.324
21) B Endrin ke...	9.301	10.073	37402246	65317071	48.948	48.830
22) Mirex	9.487	10.540	31167465	45620611	47.253	46.310
-----						

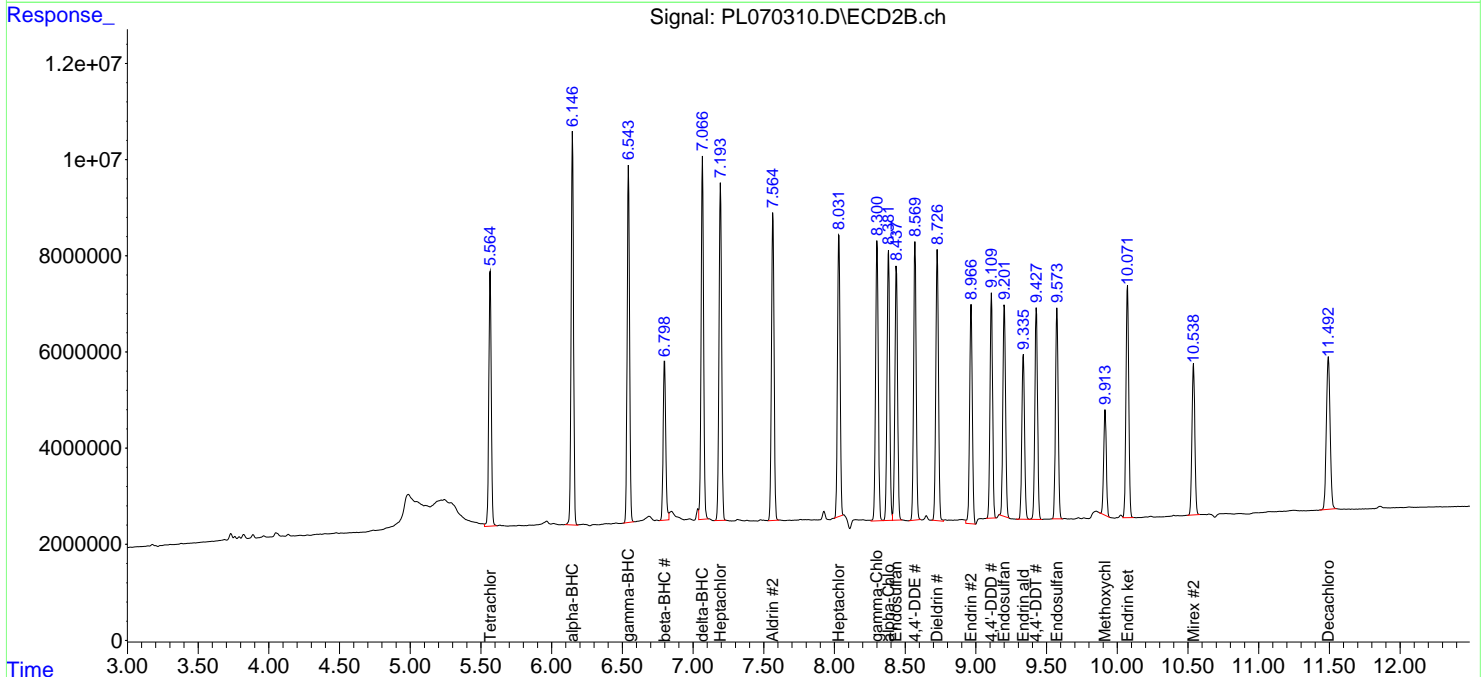
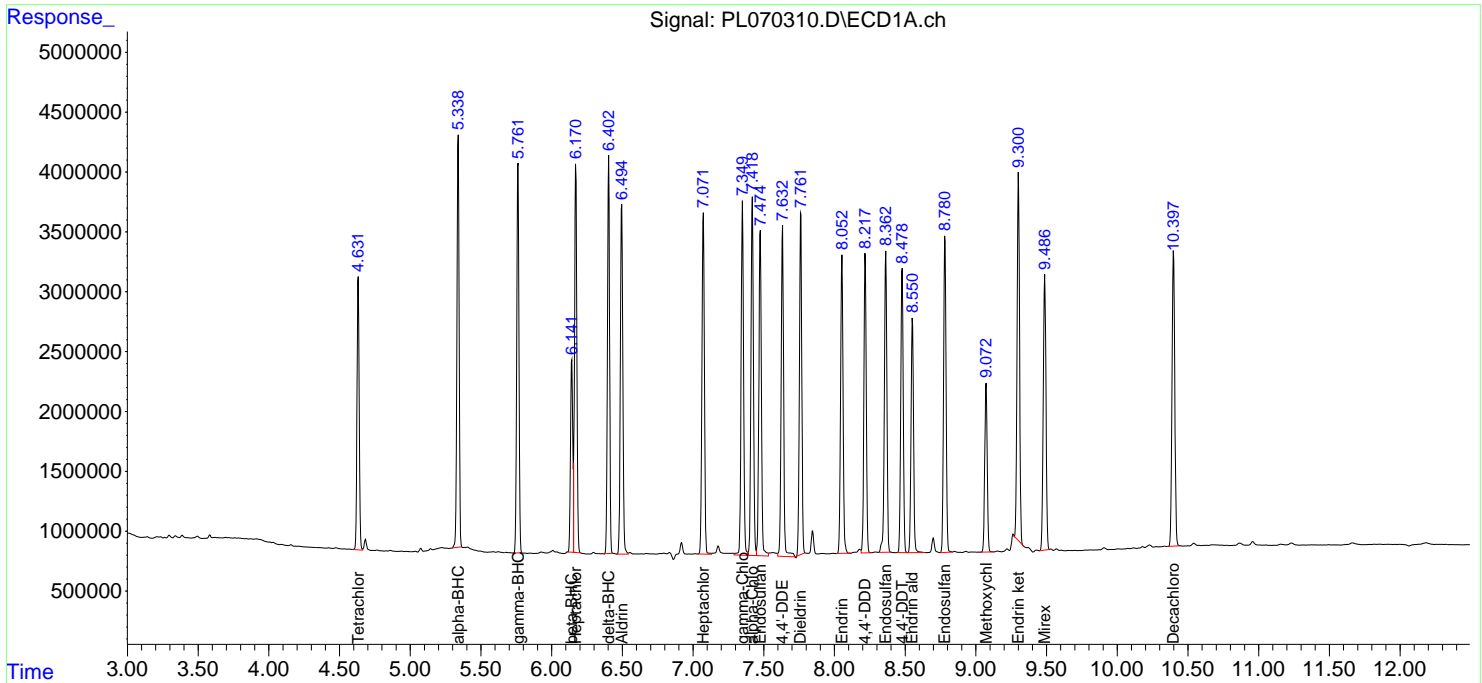
(f)=RT Delta > 1/2 Window (#)=Amounts differ by > 25% (m)=manual int.

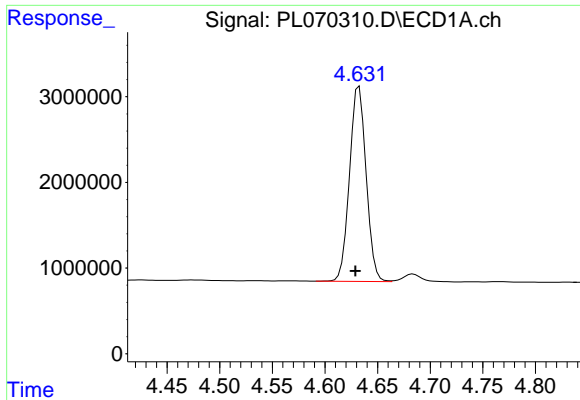
Data Path : Z:\pestpcbsrv\HPCHEM1\ECD\_L\Data\PL101521\  
 Data File : PL070310.D  
 Signal(s) : Signal #1: ECD1A.ch Signal #2: ECD2B.ch  
 Acq On : 14 Oct 2021 10:59  
 Operator : AR\AJ  
 Sample : PSTDCCC050  
 Misc :  
 ALS Vial : 4 Sample Multiplier: 1

Instrument :  
 ECD\_L  
 ClientSampleId :  
 PSTDCCC050

Integration File signal 1: autoint1.e  
 Integration File signal 2: autoint2.e  
 Quant Time: Oct 14 13:24:25 2021  
 Quant Method : Z:\pestpcbsrv\HPCHEM1\ECD\_L\methods\PL092821.M  
 Quant Title : GC Extractables  
 QLast Update : Wed Sep 29 09:19:28 2021  
 Response via : Initial Calibration  
 Integrator: ChemStation

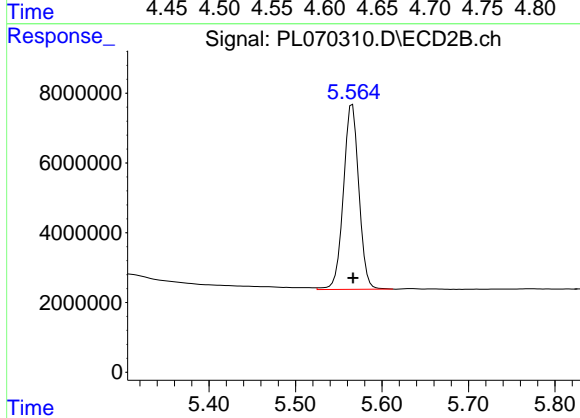
Volume Inj. : 1 µl  
 Signal #1 Phase : ZB-MR2 Signal #2 Phase: ZB-MR1  
 Signal #1 Info : 30M x 0.32mm x0.2 Signal #2 Info : 30M x 0.32mm x0.5µm



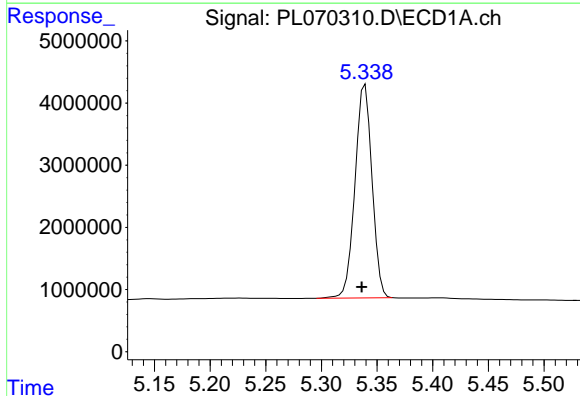


#1 Tetrachloro-m-xylene  
R.T.: 4.632 min  
Delta R.T.: 0.003 min  
Response: 25100662  
Conc: 50.16 ng/ml

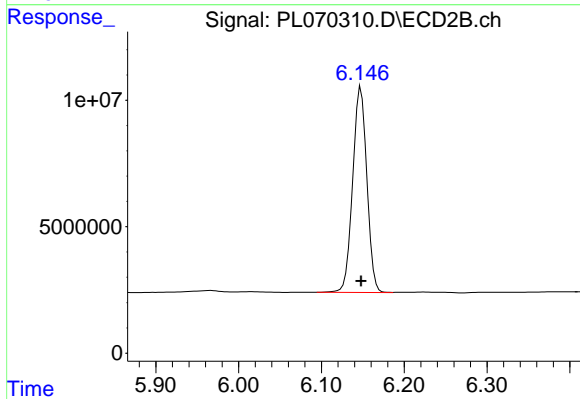
Instrument :  
ECD\_L  
ClientSampleId :  
PSTDCCC050



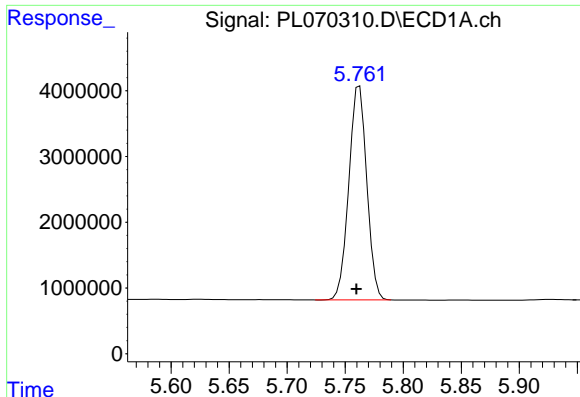
#1 Tetrachloro-m-xylene  
R.T.: 5.566 min  
Delta R.T.: 0.000 min  
Response: 65771699  
Conc: 49.73 ng/ml



#2 alpha-BHC  
R.T.: 5.339 min  
Delta R.T.: 0.003 min  
Response: 36633044  
Conc: 49.49 ng/ml



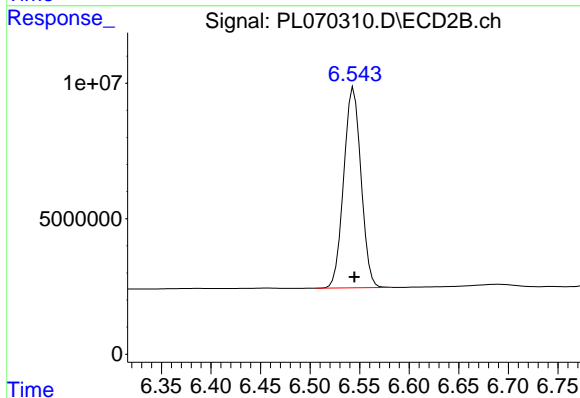
#2 alpha-BHC  
R.T.: 6.148 min  
Delta R.T.: 0.000 min  
Response: 96648133  
Conc: 49.41 ng/ml



#3 gamma-BHC (Lindane)

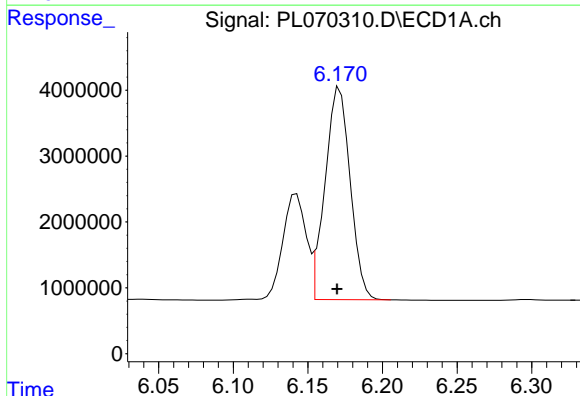
R.T.: 5.762 min  
Delta R.T.: 0.003 min  
Response: 34979921  
Conc: 50.10 ng/ml

Instrument :  
ECD\_L  
ClientSampleId :  
PSTDCCC050



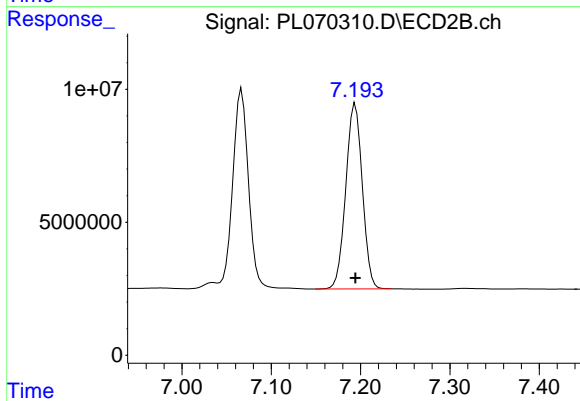
#3 gamma-BHC (Lindane)

R.T.: 6.544 min  
Delta R.T.: 0.000 min  
Response: 89592004  
Conc: 48.90 ng/ml



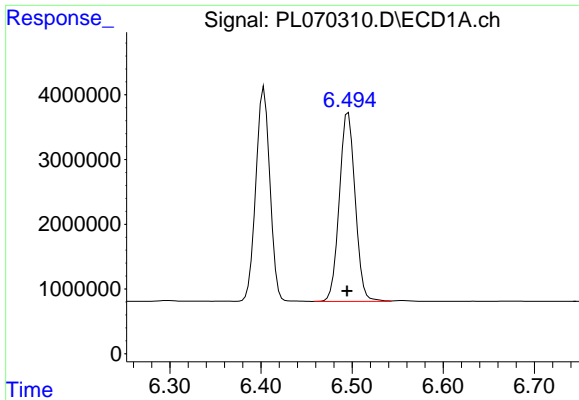
#4 Heptachlor

R.T.: 6.171 min  
Delta R.T.: 0.002 min  
Response: 37729719  
Conc: 49.53 ng/ml



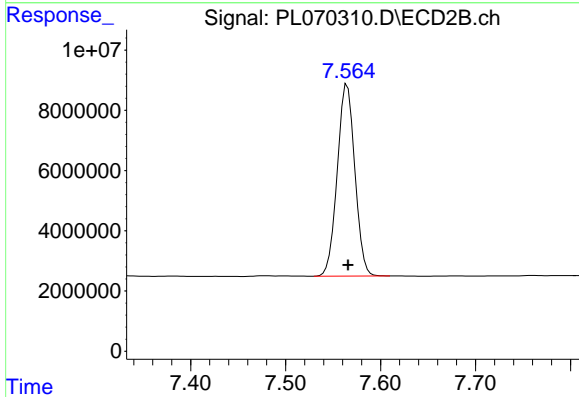
#4 Heptachlor

R.T.: 7.194 min  
Delta R.T.: 0.000 min  
Response: 89617812  
Conc: 48.05 ng/ml

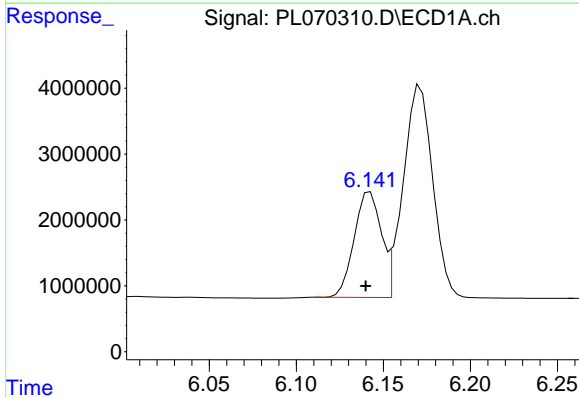


#5 Aldrin  
 R.T.: 6.496 min  
 Delta R.T.: 0.001 min  
 Response: 35244141  
 Conc: 48.83 ng/ml

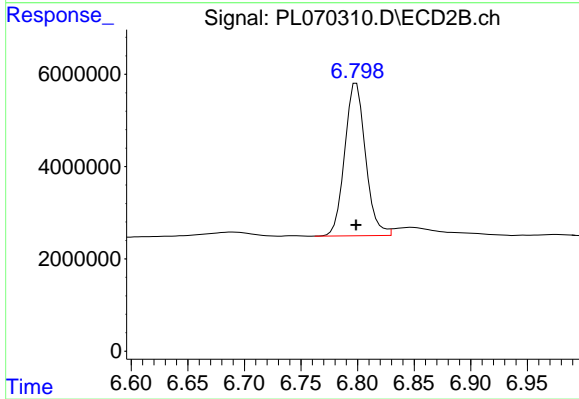
Instrument :  
 ECD\_L  
 ClientSampleId :  
 PSTDCCC050



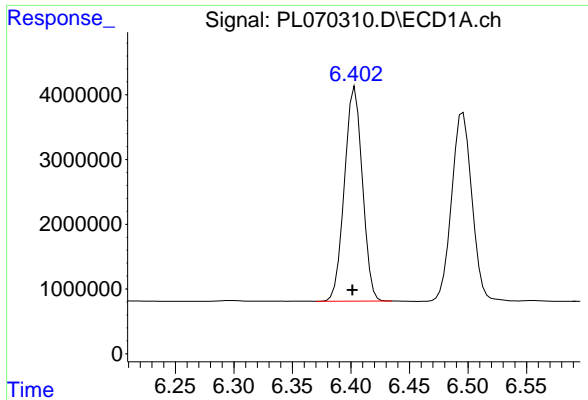
#5 Aldrin  
 R.T.: 7.565 min  
 Delta R.T.: 0.000 min  
 Response: 82192044  
 Conc: 47.70 ng/ml



#6 beta-BHC  
 R.T.: 6.142 min  
 Delta R.T.: 0.002 min  
 Response: 17320753  
 Conc: 51.59 ng/ml

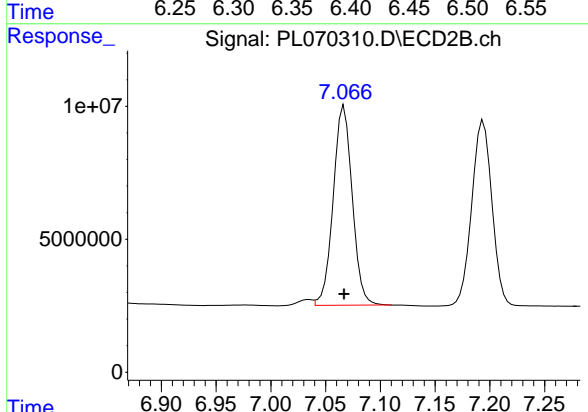


#6 beta-BHC  
 R.T.: 6.799 min  
 Delta R.T.: 0.000 min  
 Response: 42321100  
 Conc: 49.22 ng/ml

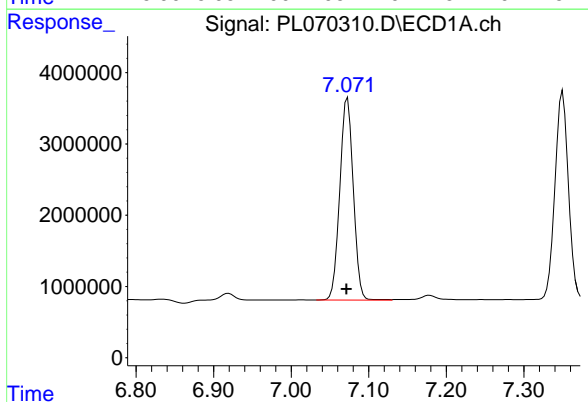


#7 delta-BHC  
 R.T.: 6.403 min  
 Delta R.T.: 0.002 min  
 Response: 35268760  
 Conc: 51.02 ng/ml

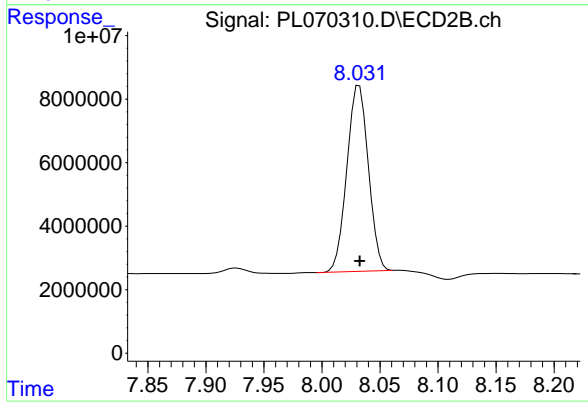
Instrument :  
 ECD\_L  
 ClientSampleId :  
 PSTDCCC050



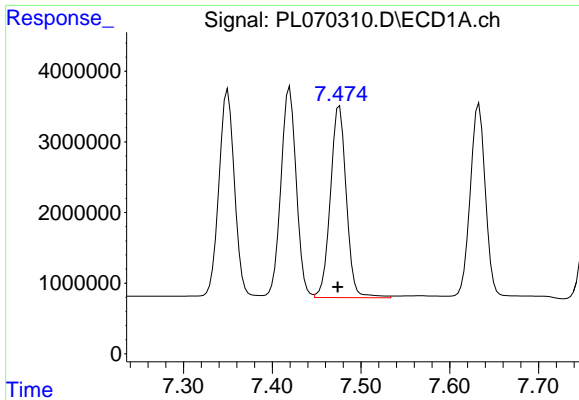
#7 delta-BHC  
 R.T.: 7.067 min  
 Delta R.T.: 0.000 min  
 Response: 90703131  
 Conc: 46.86 ng/ml



#8 Heptachlor epoxide  
 R.T.: 7.073 min  
 Delta R.T.: 0.002 min  
 Response: 34387571  
 Conc: 49.04 ng/ml



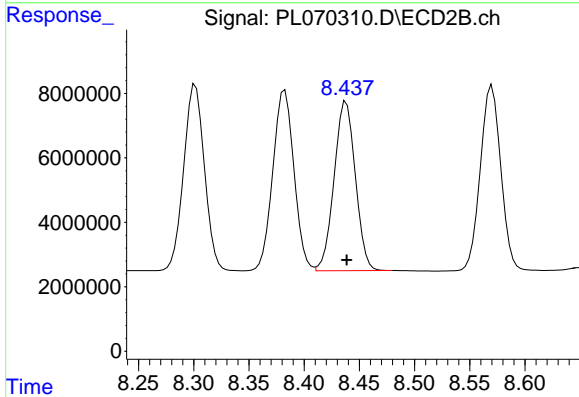
#8 Heptachlor epoxide  
 R.T.: 8.032 min  
 Delta R.T.: 0.000 min  
 Response: 75500089  
 Conc: 48.71 ng/ml



#9 Endosulfan I

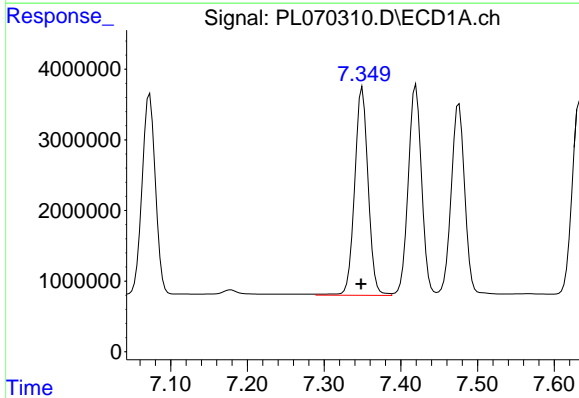
R.T.: 7.476 min  
 Delta R.T.: 0.002 min  
 Response: 33890316  
 Conc: 50.71 ng/ml

Instrument :  
 ECD\_L  
 ClientSampleId :  
 PSTDCCC050



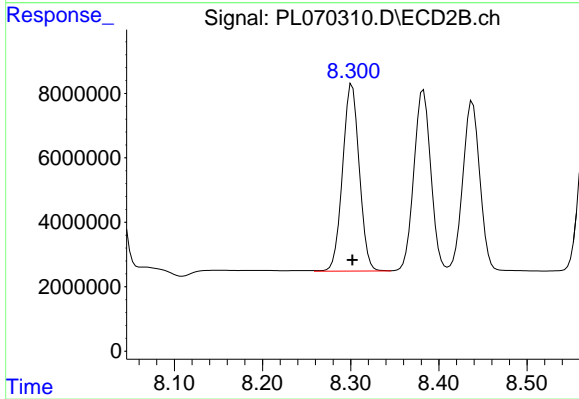
#9 Endosulfan I

R.T.: 8.438 min  
 Delta R.T.: 0.000 min  
 Response: 70393540  
 Conc: 47.85 ng/ml



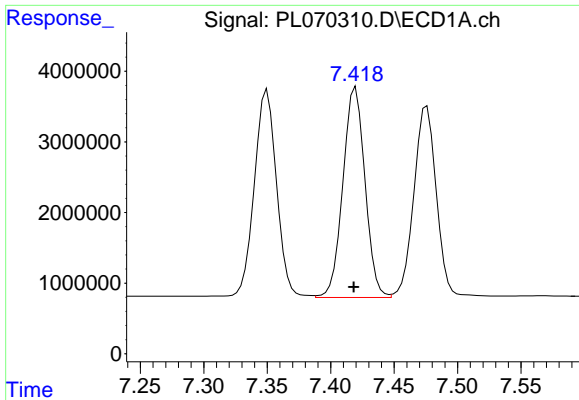
#10 gamma-Chlordane

R.T.: 7.350 min  
 Delta R.T.: 0.002 min  
 Response: 36178599  
 Conc: 49.96 ng/ml



#10 gamma-Chlordane

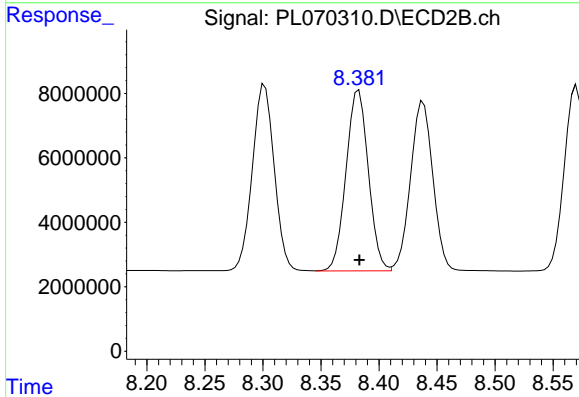
R.T.: 8.302 min  
 Delta R.T.: 0.000 min  
 Response: 76324150  
 Conc: 47.72 ng/ml



#11 alpha-Chlordane

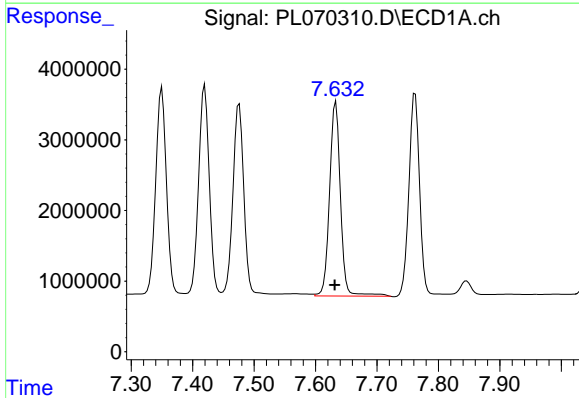
R.T.: 7.420 min  
Delta R.T.: 0.001 min  
Response: 36035275  
Conc: 49.48 ng/ml

Instrument :  
ECD\_L  
ClientSampleId :  
PSTDCCC050



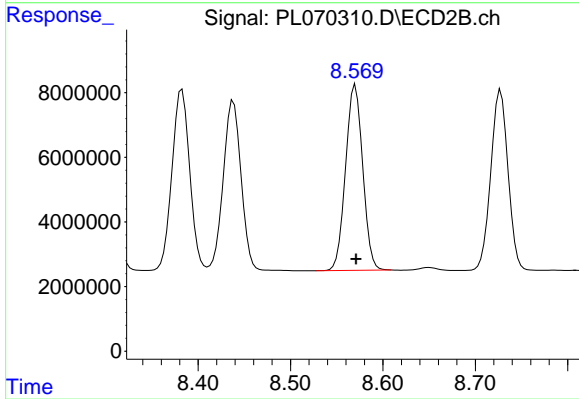
#11 alpha-Chlordane

R.T.: 8.383 min  
Delta R.T.: 0.000 min  
Response: 74956050  
Conc: 47.53 ng/ml



#12 4,4'-DDE

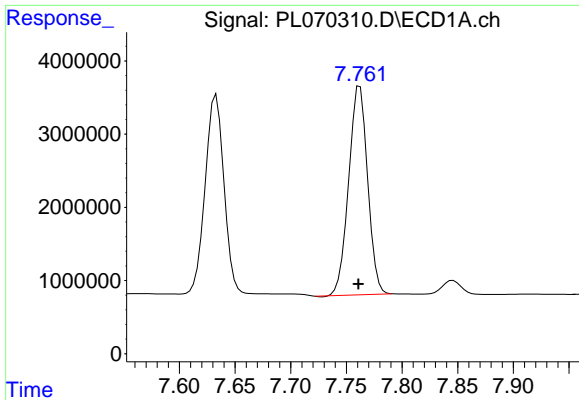
R.T.: 7.633 min  
Delta R.T.: 0.002 min  
Response: 33884254  
Conc: 53.24 ng/ml



#12 4,4'-DDE

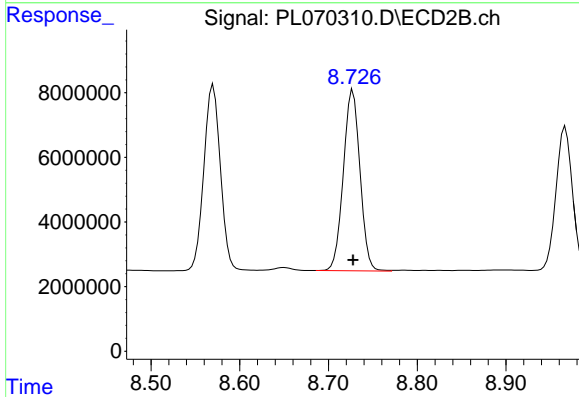
R.T.: 8.570 min  
Delta R.T.: 0.000 min  
Response: 74137404  
Conc: 47.87 ng/ml



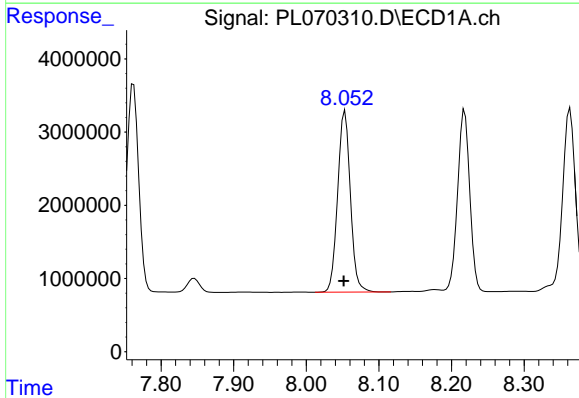


#13 Dieldrin  
 R.T.: 7.762 min  
 Delta R.T.: 0.001 min  
 Response: 33812757  
 Conc: 49.21 ng/ml

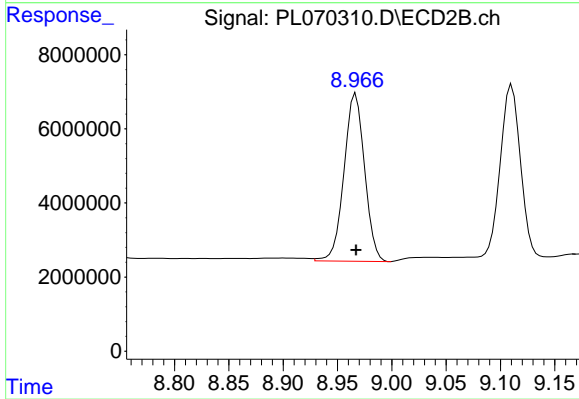
Instrument :  
 ECD\_L  
 ClientSampled :  
 PSTDCCC050



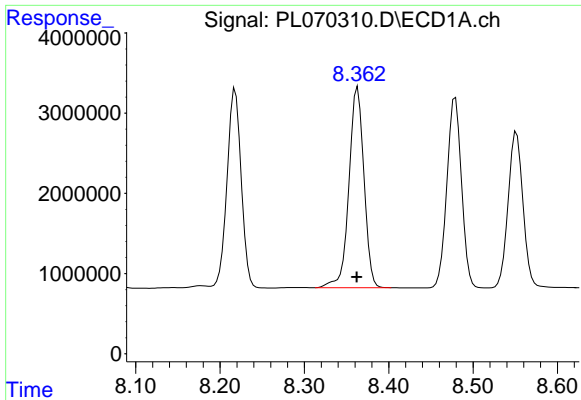
#13 Dieldrin  
 R.T.: 8.728 min  
 Delta R.T.: 0.000 min  
 Response: 73042977  
 Conc: 47.85 ng/ml



#14 Endrin  
 R.T.: 8.053 min  
 Delta R.T.: 0.002 min  
 Response: 30049967  
 Conc: 47.55 ng/ml

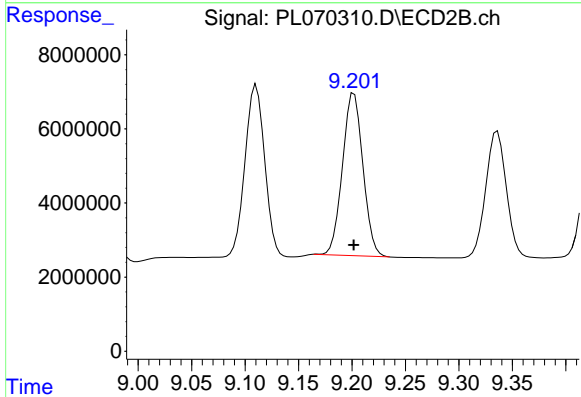


#14 Endrin  
 R.T.: 8.967 min  
 Delta R.T.: 0.000 min  
 Response: 59808506  
 Conc: 47.61 ng/ml

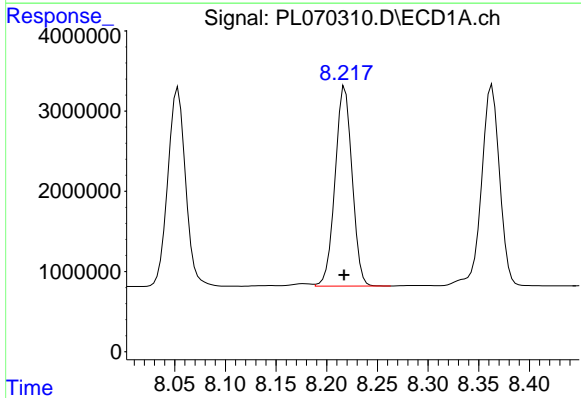


#15 Endosulfan II  
 R.T.: 8.363 min  
 Delta R.T.: 0.000 min  
 Response: 30955137  
 Conc: 48.80 ng/ml

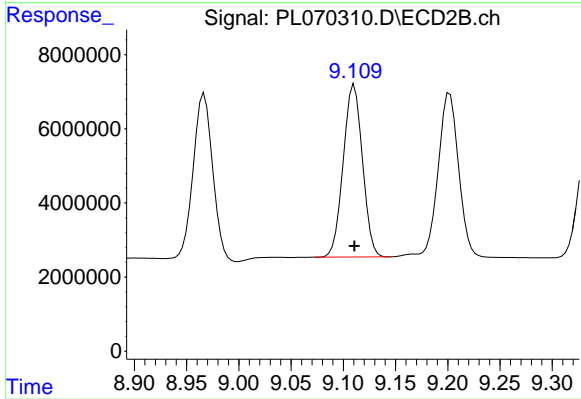
Instrument :  
 ECD\_L  
 ClientSampled :  
 PSTDCCC050



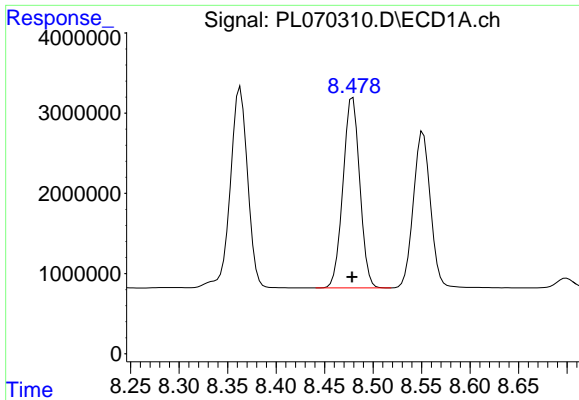
#15 Endosulfan II  
 R.T.: 9.202 min  
 Delta R.T.: 0.000 min  
 Response: 58429590  
 Conc: 48.90 ng/ml



#16 4,4'-DDD  
 R.T.: 8.218 min  
 Delta R.T.: 0.000 min  
 Response: 29077340  
 Conc: 51.85 ng/ml



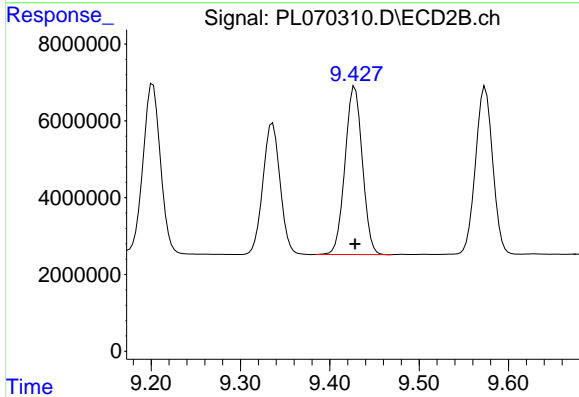
#16 4,4'-DDD  
 R.T.: 9.111 min  
 Delta R.T.: 0.000 min  
 Response: 59547656  
 Conc: 50.41 ng/ml



#17 4,4'-DDT

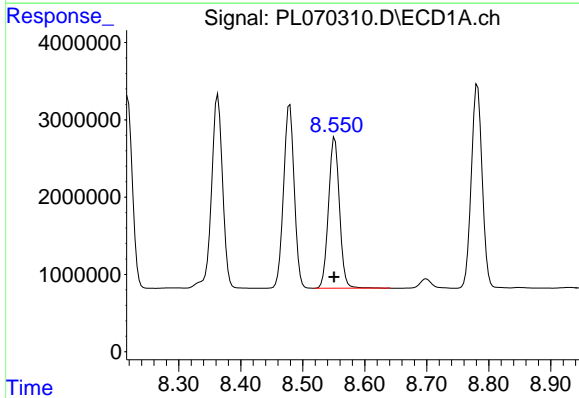
R.T.: 8.479 min  
Delta R.T.: 0.000 min  
Response: 28521398  
Conc: 46.63 ng/ml

Instrument :  
ECD\_L  
ClientSampleId :  
PSTDCCC050



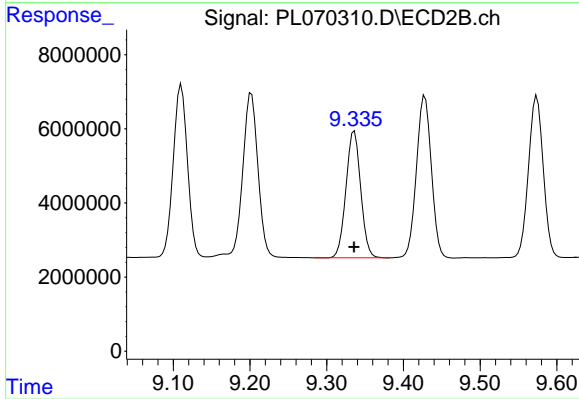
#17 4,4'-DDT

R.T.: 9.428 min  
Delta R.T.: 0.000 min  
Response: 59099086  
Conc: 45.22 ng/ml



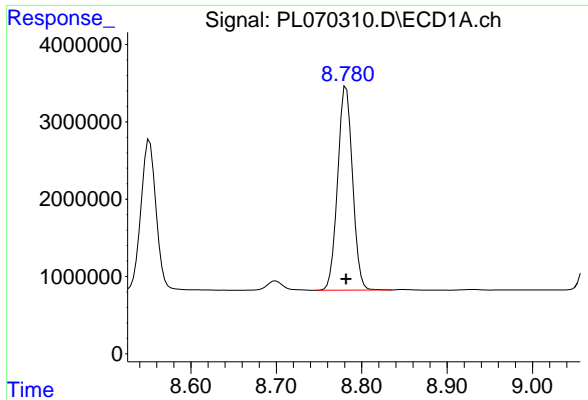
#18 Endrin aldehyde

R.T.: 8.552 min  
Delta R.T.: 0.001 min  
Response: 23903691  
Conc: 48.25 ng/ml



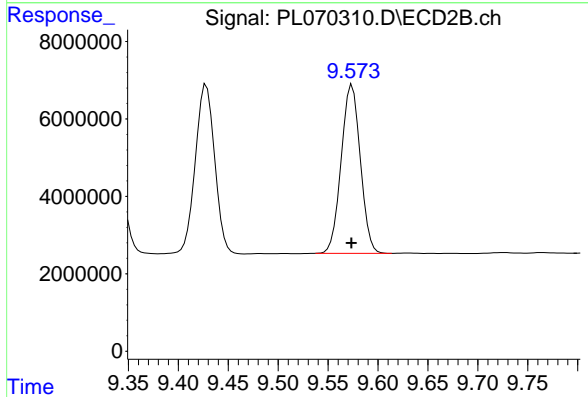
#18 Endrin aldehyde

R.T.: 9.336 min  
Delta R.T.: 0.000 min  
Response: 45853988  
Conc: 47.54 ng/ml

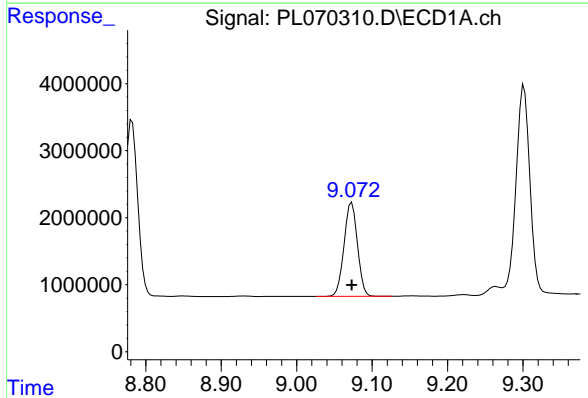


#19 Endosulfan Sulfate  
 R.T.: 8.782 min  
 Delta R.T.: 0.000 min  
 Response: 31923257  
 Conc: 48.39 ng/ml

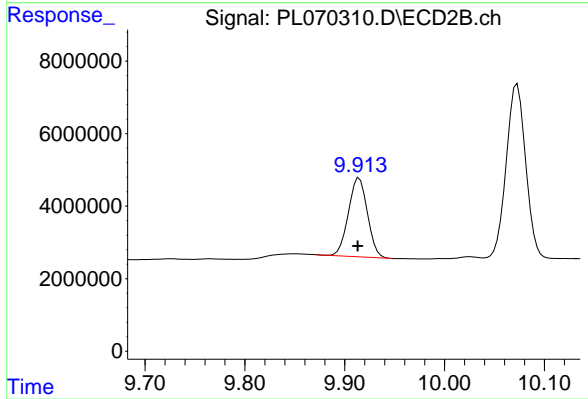
Instrument :  
 ECD\_L  
 ClientSampleId :  
 PSTDCCC050



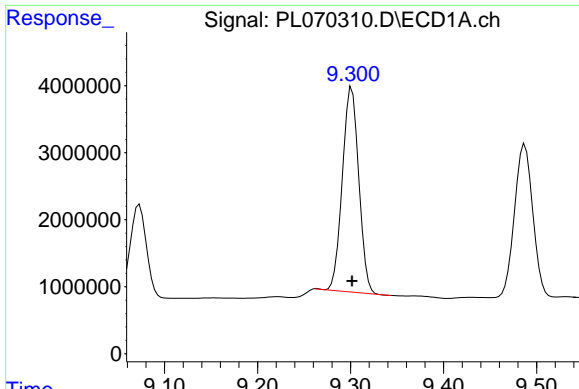
#19 Endosulfan Sulfate  
 R.T.: 9.574 min  
 Delta R.T.: 0.000 min  
 Response: 58144065  
 Conc: 47.51 ng/ml



#20 Methoxychlor  
 R.T.: 9.073 min  
 Delta R.T.: 0.000 min  
 Response: 17330445  
 Conc: 46.41 ng/ml



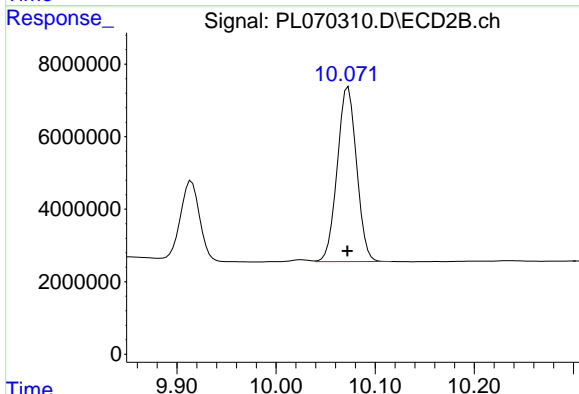
#20 Methoxychlor  
 R.T.: 9.915 min  
 Delta R.T.: 0.002 min  
 Response: 28683712  
 Conc: 44.32 ng/ml



#21 Endrin ketone

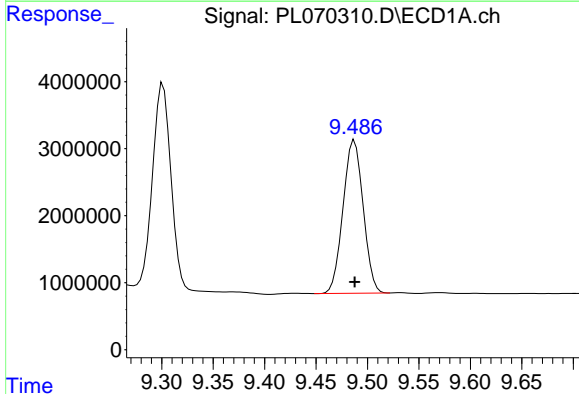
R.T.: 9.301 min  
 Delta R.T.: 0.000 min  
 Response: 37402246  
 Conc: 48.95 ng/ml

Instrument :  
 ECD\_L  
 ClientSampleId :  
 PSTDCCC050



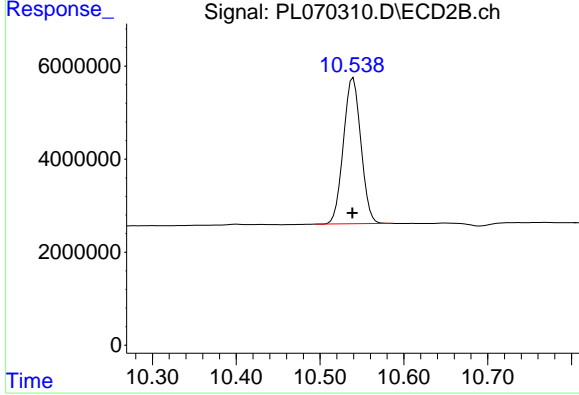
#21 Endrin ketone

R.T.: 10.073 min  
 Delta R.T.: 0.000 min  
 Response: 65317071  
 Conc: 48.83 ng/ml



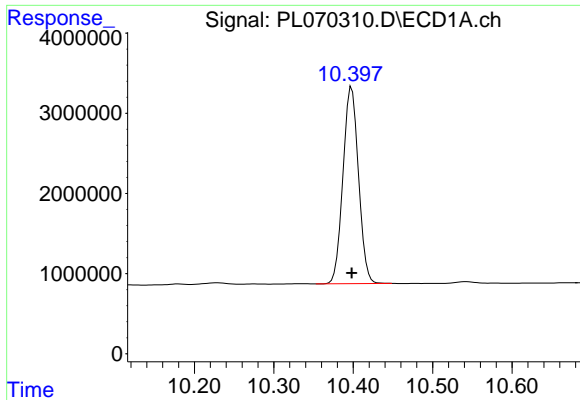
#22 Mirex

R.T.: 9.487 min  
 Delta R.T.: 0.000 min  
 Response: 31167465  
 Conc: 47.25 ng/ml



#22 Mirex

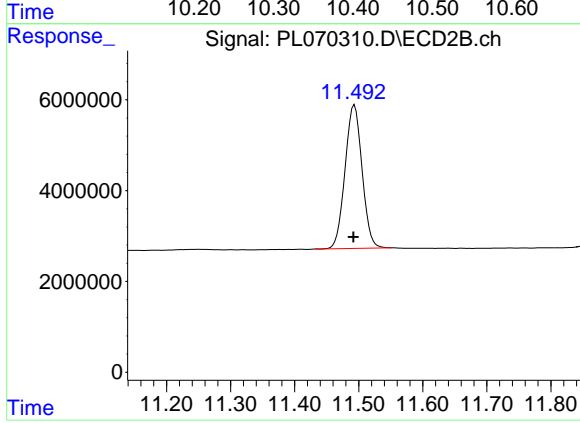
R.T.: 10.540 min  
 Delta R.T.: 0.000 min  
 Response: 45620611  
 Conc: 46.31 ng/ml



#28 Decachlorobiphenyl

R.T.: 10.398 min  
Delta R.T.: 0.000 min  
Response: 33377780  
Conc: 48.24 ng/ml

Instrument :  
ECD\_L  
ClientSampleId :  
PSTDCCC050



#28 Decachlorobiphenyl

R.T.: 11.493 min  
Delta R.T.: 0.002 min  
Response: 58272891  
Conc: 48.15 ng/ml