

Data Path : Z:\pestpcbsrv\HPCHEM1\ECD_L\Data\PL101521\
 Data File : PL070318.D
 Signal(s) : Signal #1: ECD1A.ch Signal #2: ECD2B.ch
 Acq On : 14 Oct 2021 15:04
 Operator : AR\AJ
 Sample : M4191-02
 Misc :
 ALS Vial : 10 Sample Multiplier: 1

Instrument :
 ECD_L
ClientSampleId :
 COMP-5

Manual Integrations
APPROVED
 mohammad
 10/15/2021 2:52:31 PM

Integration File signal 1: autoint1.e
 Integration File signal 2: autoint2.e
 Quant Time: Oct 14 15:48:54 2021
 Quant Method : Z:\pestpcbsrv\HPCHEM1\ECD_L\methods\PL092821.M
 Quant Title : GC Extractables
 QLast Update : Wed Sep 29 09:19:28 2021
 Response via : Initial Calibration
 Integrator: ChemStation

Volume Inj. : 1 µl
 Signal #1 Phase : ZB-MR2 Signal #2 Phase: ZB-MR1
 Signal #1 Info : 30M x 0.32mm x0.2 Signal #2 Info : 30M x 0.32mm x0.5µm

Compound	RT#1	RT#2	Resp#1	Resp#2	ng/ml	ng/ml

System Monitoring Compounds						
1) SA Tetrachlo...	4.632	5.565	11924036	30356456	23.830	22.952
28) SA Decachlor...	10.397	11.491	12507091	25267255	18.074	20.879
Target Compounds						
12) B 4,4'-DDE	7.632	8.562	2019784	3227151	3.173	2.084m#
16) A 4,4'-DDD	8.217	9.106	1183207	3631872	2.110	3.075m#
17) MA 4,4'-DDT	8.476	9.429	555884	704808	0.909	0.539 #

(f)=RT Delta > 1/2 Window (#)=Amounts differ by > 25% (m)=manual int.

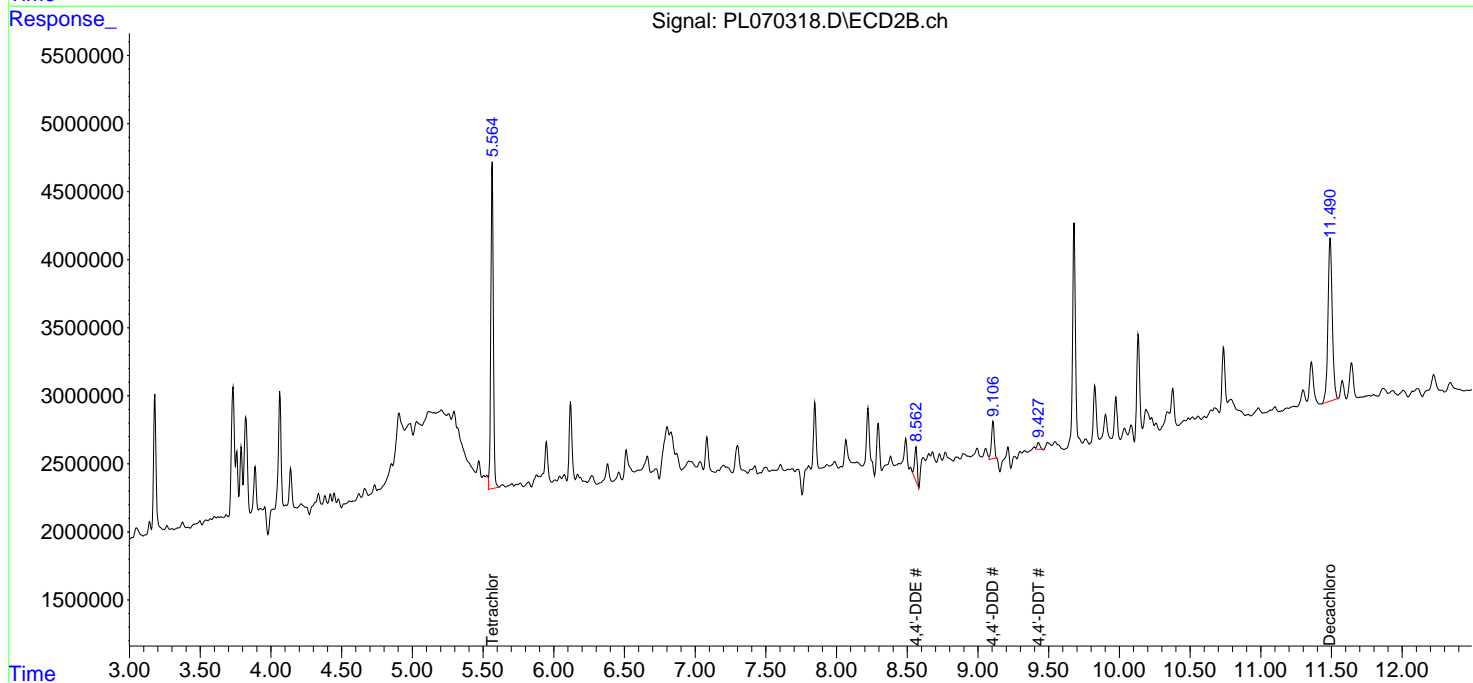
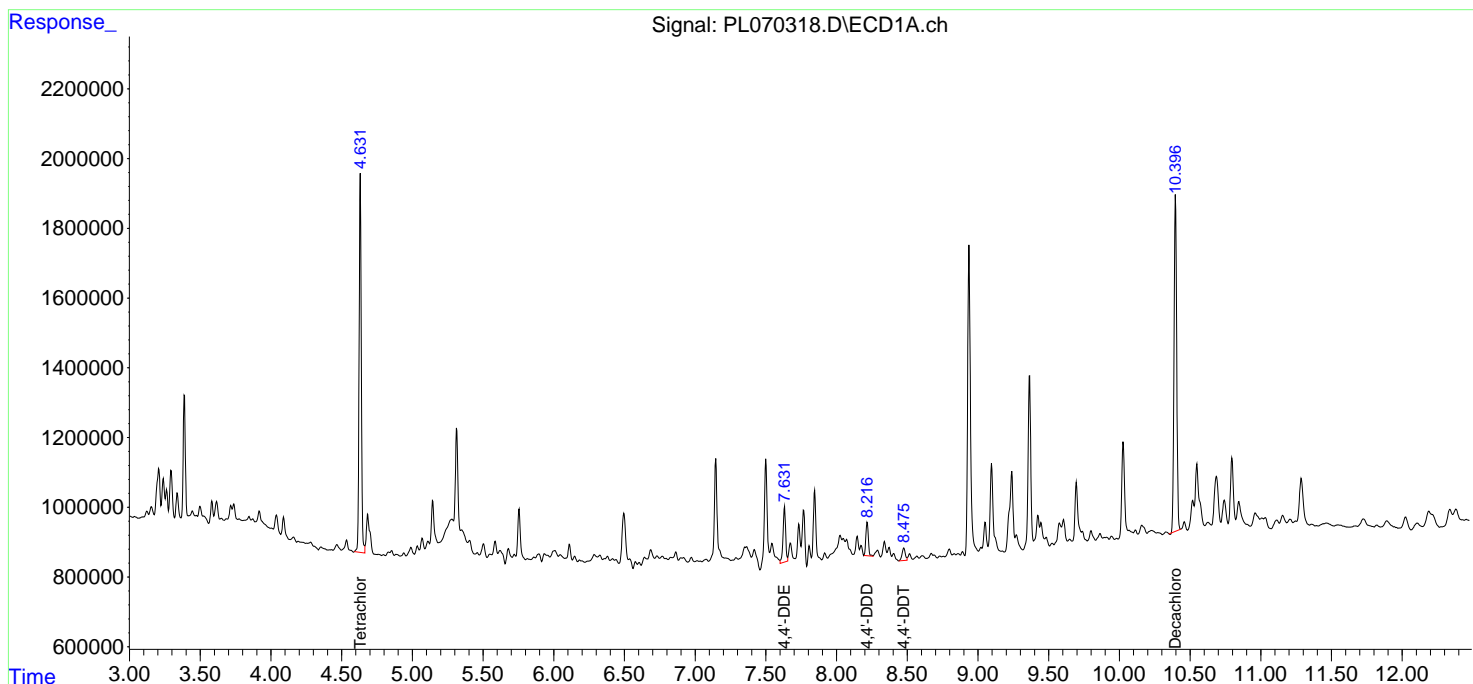
Data Path : Z:\pestpcbsrv\HPCHEM1\ECD_L\Data\PL101521\
 Data File : PL070318.D
 Signal(s) : Signal #1: ECD1A.ch Signal #2: ECD2B.ch
 Acq On : 14 Oct 2021 15:04
 Operator : AR\AJ
 Sample : M4191-02
 Misc :
 ALS Vial : 10 Sample Multiplier: 1

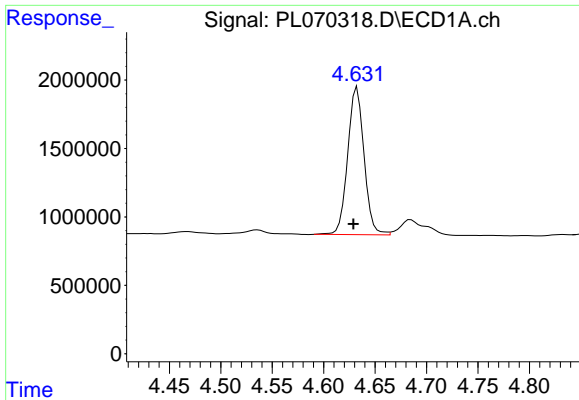
Instrument :
 ECD_L
Client Sampled :
 COMP-5

Manual Integrations
APPROVED
 mohammad
 10/15/2021 2:52:31 PM

Integration File signal 1: autoint1.e
 Integration File signal 2: autoint2.e
 Quant Time: Oct 14 15:48:54 2021
 Quant Method : Z:\pestpcbsrv\HPCHEM1\ECD_L\methods\PL092821.M
 Quant Title : GC Extractables
 QLast Update : Wed Sep 29 09:19:28 2021
 Response via : Initial Calibration
 Integrator: ChemStation

Volume Inj. : 1 µl
 Signal #1 Phase : ZB-MR2 Signal #2 Phase: ZB-MR1
 Signal #1 Info : 30M x 0.32mm x0.2 Signal #2 Info : 30M x 0.32mm x0.5µm

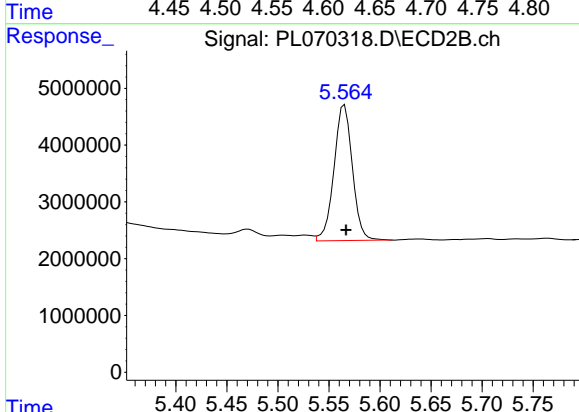




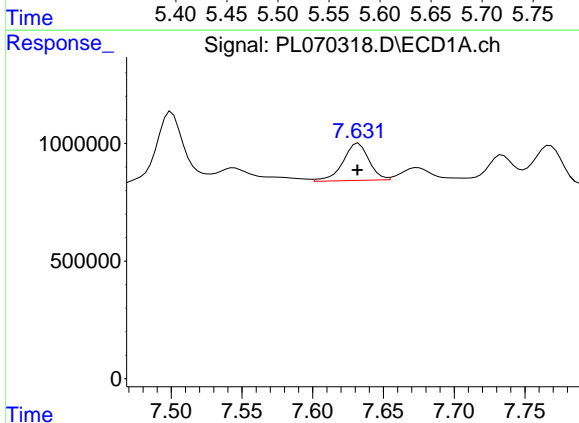
#1 Tetrachloro-m-xylene
 R.T.: 4.632 min
 Delta R.T.: 0.003 min
 Response: 11924036
 Conc: 23.83 ng/ml

Instrument :
 ECD_L
 ClientSampled :
 COMP-5

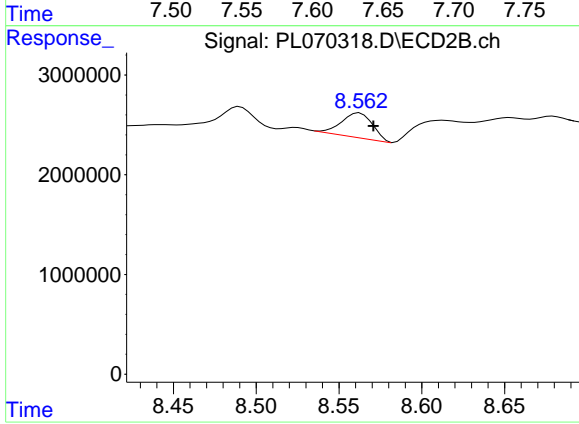
Manual Integrations
 APPROVED
 mohammad
 10/15/2021 2:52:31 PM



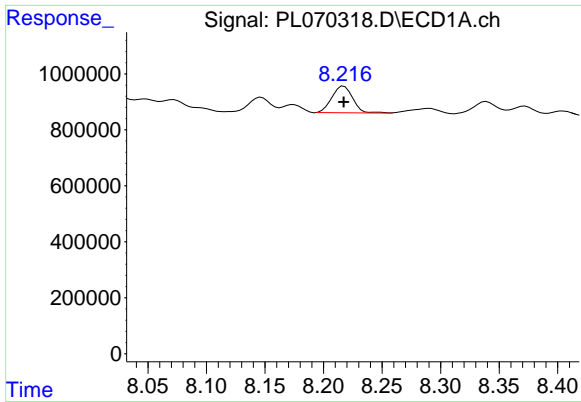
#1 Tetrachloro-m-xylene
 R.T.: 5.565 min
 Delta R.T.: -0.001 min
 Response: 30356456
 Conc: 22.95 ng/ml



#12 4,4'-DDE
 R.T.: 7.632 min
 Delta R.T.: 0.000 min
 Response: 2019784
 Conc: 3.17 ng/ml



#12 4,4'-DDE
 R.T.: 8.562 min
 Delta R.T.: -0.009 min
 Response: 3227151
 Conc: 2.08 ng/ml m



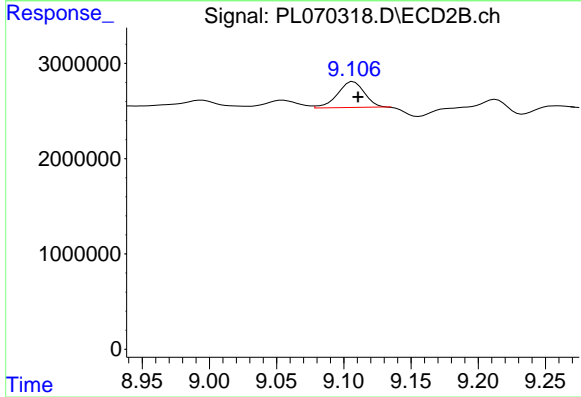
#16 4,4'-DDD

R.T.: 8.217 min
 Delta R.T.: 0.000 min
 Response: 1183207
 Conc: 2.11 ng/ml

Instrument :
 ECD_L
 ClientSampled :
 COMP-5

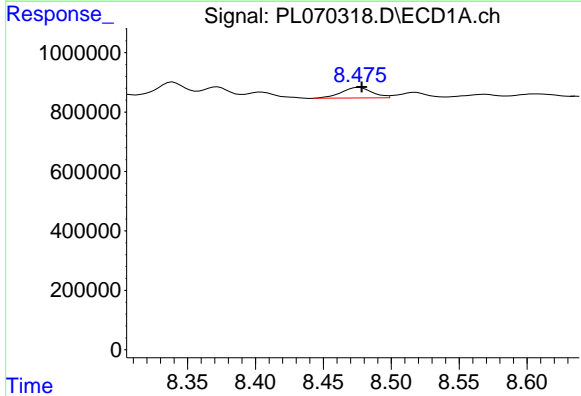
Manual Integrations
 APPROVED

mohammad
 10/15/2021 2:52:31 PM



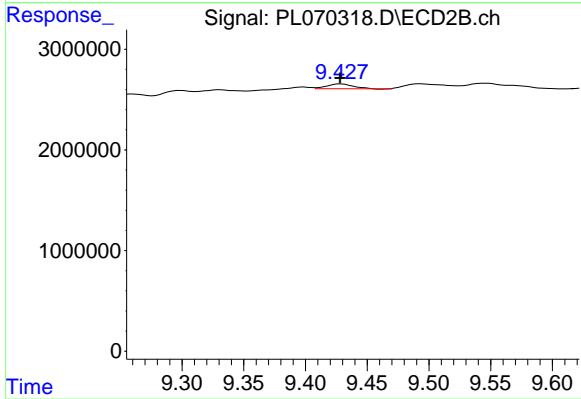
#16 4,4'-DDD

R.T.: 9.106 min
 Delta R.T.: -0.005 min
 Response: 3631872
 Conc: 3.07 ng/ml m



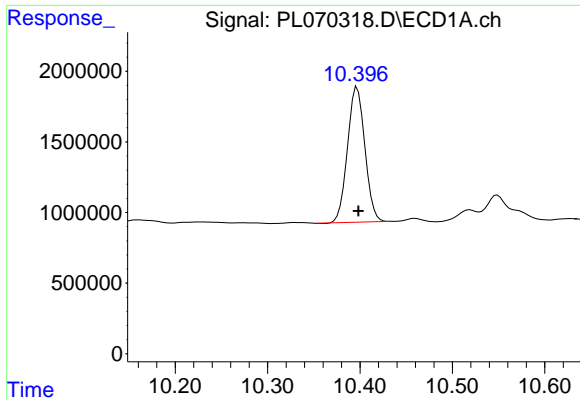
#17 4,4'-DDT

R.T.: 8.476 min
 Delta R.T.: -0.002 min
 Response: 555884
 Conc: 0.91 ng/ml



#17 4,4'-DDT

R.T.: 9.429 min
 Delta R.T.: 0.000 min
 Response: 704808
 Conc: 0.54 ng/ml



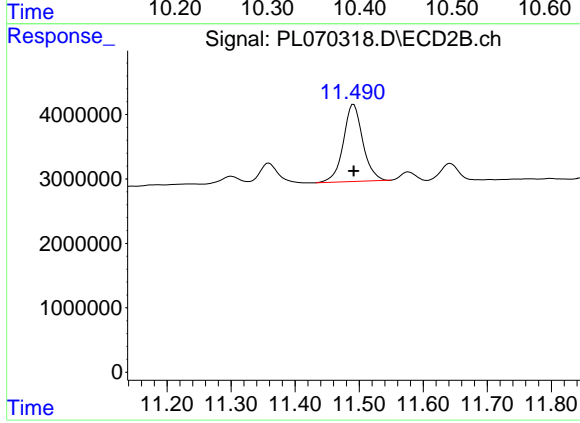
#28 Decachlorobiphenyl

R.T.: 10.397 min
Delta R.T.: -0.001 min
Response: 12507091
Conc: 18.07 ng/ml

Instrument :
ECD_L
ClientSampled :
COMP-5

Manual Integrations
APPROVED

mohammad
10/15/2021 2:52:31 PM



#28 Decachlorobiphenyl

R.T.: 11.491 min
Delta R.T.: 0.000 min
Response: 25267255
Conc: 20.88 ng/ml