

Data Path : Z:\pestpcbsrv\HPCHEM1\ECD_L\Data\PL101521\
 Data File : PL070322.D
 Signal(s) : Signal #1: ECD1A.ch Signal #2: ECD2B.ch
 Acq On : 14 Oct 2021 16:11
 Operator : AR\AJ
 Sample : M4193-01
 Misc :
 ALS Vial : 14 Sample Multiplier: 1

Instrument :
 ECD_L
ClientSampled :
 351

Manual Integrations
APPROVED
 mohammad
 10/15/2021 2:52:36 PM

Integration File signal 1: autoint1.e
 Integration File signal 2: autoint2.e
 Quant Time: Oct 14 16:39:56 2021
 Quant Method : Z:\pestpcbsrv\HPCHEM1\ECD_L\methods\PL092821.M
 Quant Title : GC Extractables
 QLast Update : Wed Sep 29 09:19:28 2021
 Response via : Initial Calibration
 Integrator: ChemStation

Volume Inj. : 1 µl
 Signal #1 Phase : ZB-MR2 Signal #2 Phase: ZB-MR1
 Signal #1 Info : 30M x 0.32mm x0.2 Signal #2 Info : 30M x 0.32mm x0.5µm

Compound	RT#1	RT#2	Resp#1	Resp#2	ng/ml	ng/ml

System Monitoring Compounds						
1) SA Tetrachlo...	4.625	5.565	5843578	17000507	11.678m	12.854
28) SA Decachlor...	10.394	11.490	9655971	17095424	13.954	14.126

Target Compounds

(f)=RT Delta > 1/2 Window (#)=Amounts differ by > 25% (m)=manual int.

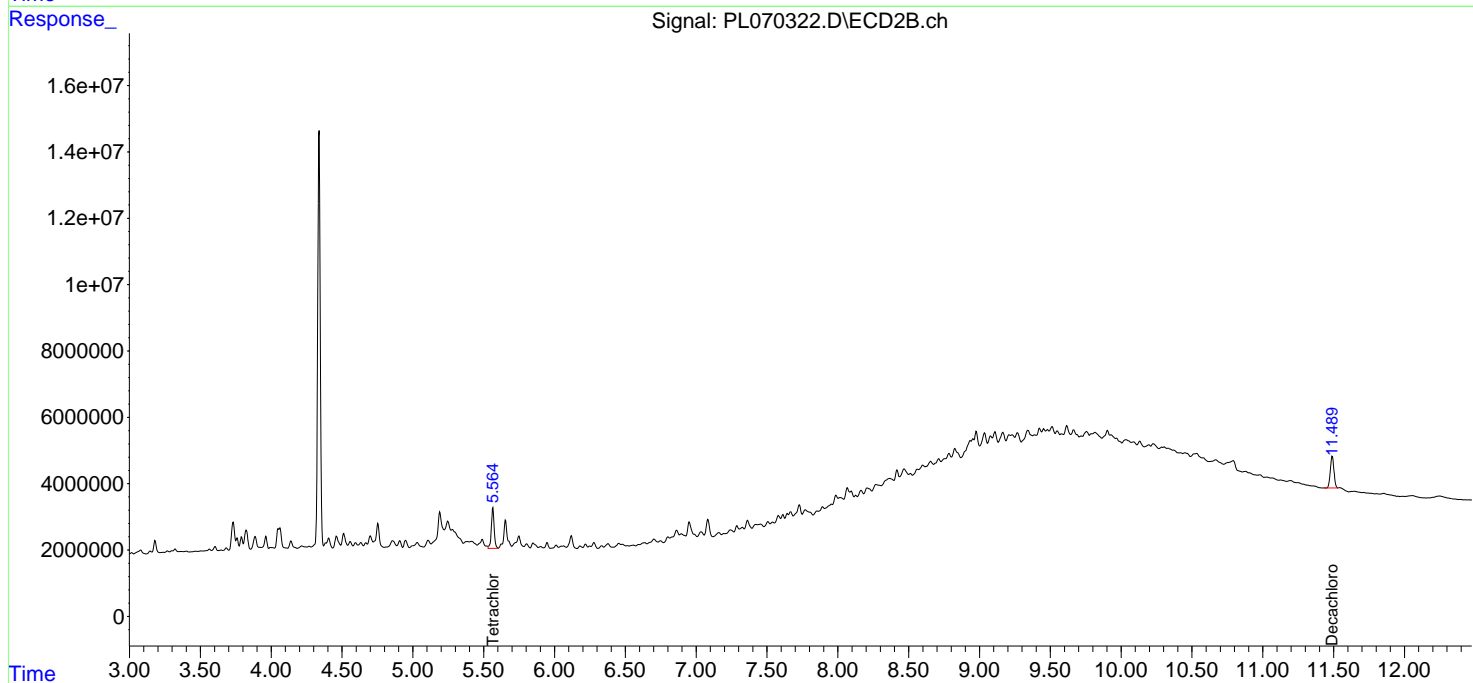
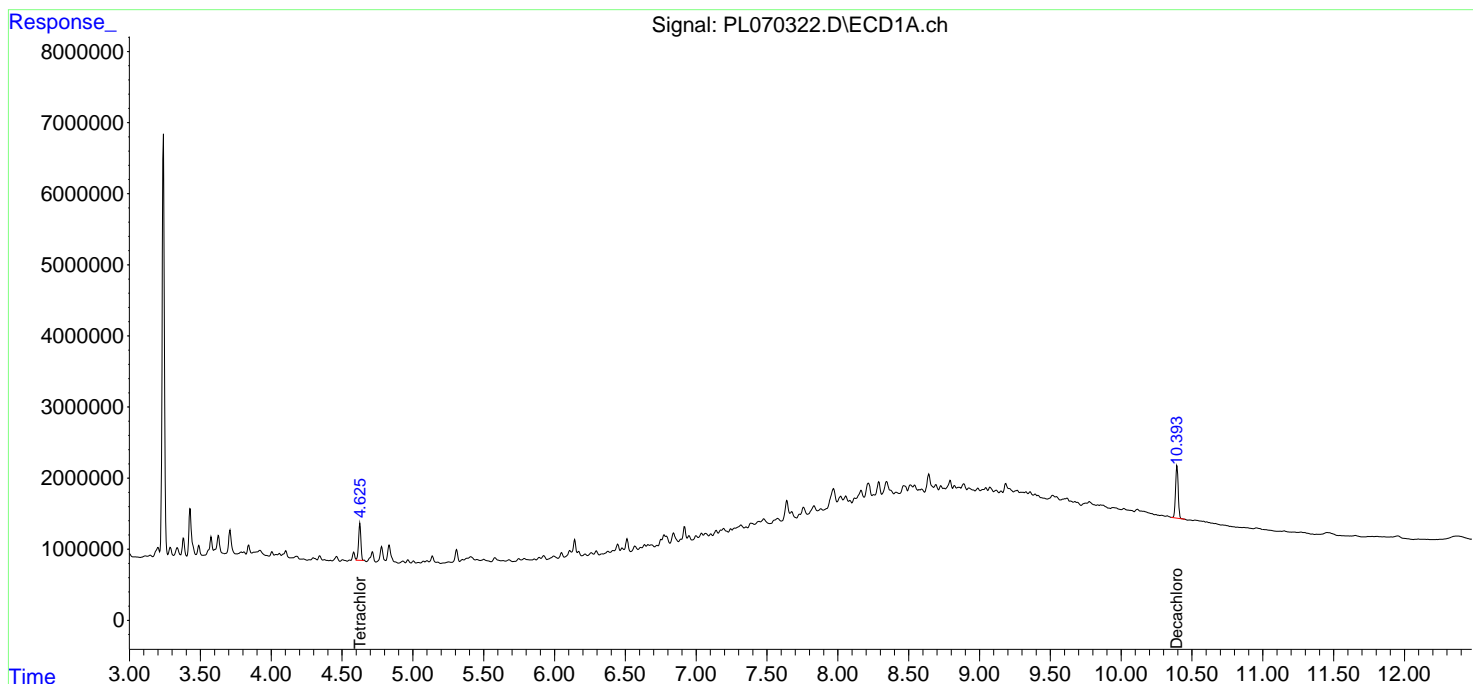
Data Path : Z:\pestpcbsrv\HPCHEM1\ECD_L\Data\PL101521\
 Data File : PL070322.D
 Signal(s) : Signal #1: ECD1A.ch Signal #2: ECD2B.ch
 Acq On : 14 Oct 2021 16:11
 Operator : AR\AJ
 Sample : M4193-01
 Misc :
 ALS Vial : 14 Sample Multiplier: 1

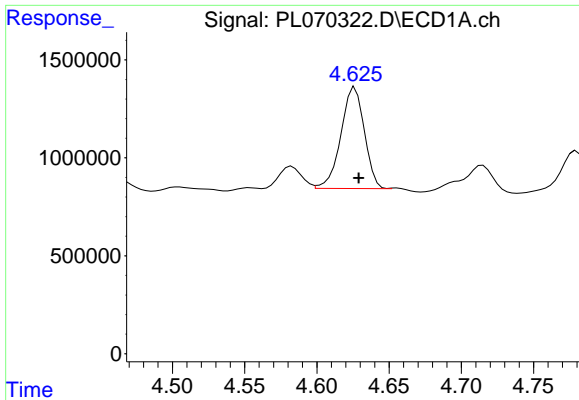
Instrument :
 ECD_L
 ClientSampled :
 351

Manual Integrations
APPROVED
 mohammad
 10/15/2021 2:52:36 PM

Integration File signal 1: autoint1.e
 Integration File signal 2: autoint2.e
 Quant Time: Oct 14 16:39:56 2021
 Quant Method : Z:\pestpcbsrv\HPCHEM1\ECD_L\methods\PL092821.M
 Quant Title : GC Extractables
 QLast Update : Wed Sep 29 09:19:28 2021
 Response via : Initial Calibration
 Integrator: ChemStation

Volume Inj. : 1 µl
 Signal #1 Phase : ZB-MR2 Signal #2 Phase: ZB-MR1
 Signal #1 Info : 30M x 0.32mm x0.2 Signal #2 Info : 30M x 0.32mm x0.5µm

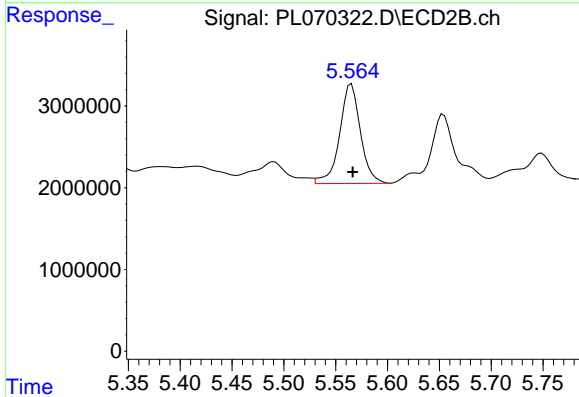




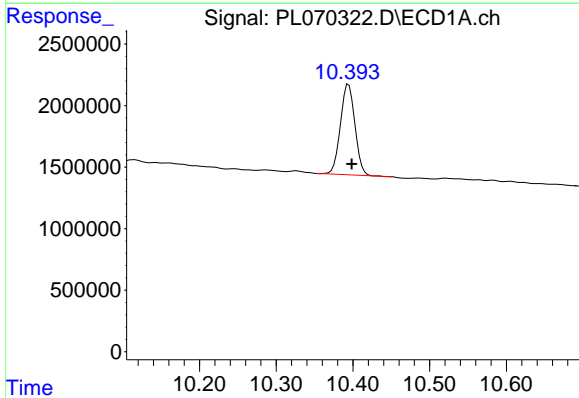
#1 Tetrachloro-m-xylene
 R.T.: 4.625 min
 Delta R.T.: -0.004 min
 Response: 5843578
 Conc: 11.68 ng/ml m

Instrument :
 ECD_L
 ClientSampled :
 351

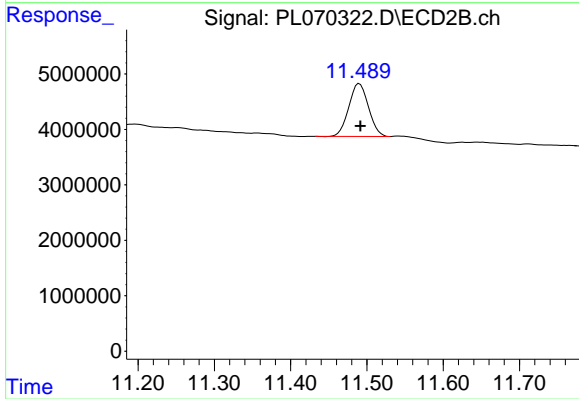
Manual Integrations
 APPROVED
 mohammad
 10/15/2021 2:52:36 PM



#1 Tetrachloro-m-xylene
 R.T.: 5.565 min
 Delta R.T.: -0.001 min
 Response: 17000507
 Conc: 12.85 ng/ml



#28 Decachlorobiphenyl
 R.T.: 10.394 min
 Delta R.T.: -0.004 min
 Response: 9655971
 Conc: 13.95 ng/ml



#28 Decachlorobiphenyl
 R.T.: 11.490 min
 Delta R.T.: -0.001 min
 Response: 17095424
 Conc: 14.13 ng/ml